

# V&V Reference Report

## L2 ASCDS Version : 7.6.7.1

Observation 60005 - L2 Version 001  
Chandra X-Ray Center

L2 Processing Date : Apr 15 2006

## Contents

<b>1</b>	<b>Front</b>	<b>2</b>
<b>2</b>	<b>OBI</b>	<b>3</b>
2.1	OBI . . . . .	3
2.1.1	Images . . . . .	3
2.1.2	Bias . . . . .	3
2.1.3	Parameters . . . . .	4
2.1.4	Events . . . . .	4
2.2	Compared Parameters . . . . .	5
2.3	Aspect . . . . .	6
2.4	Star Slots . . . . .	8
2.5	FID Slots . . . . .	8
<b>A</b>	<b>Summary</b>	<b>9</b>
A.1	Status . . . . .	9
A.2	Comments . . . . .	9

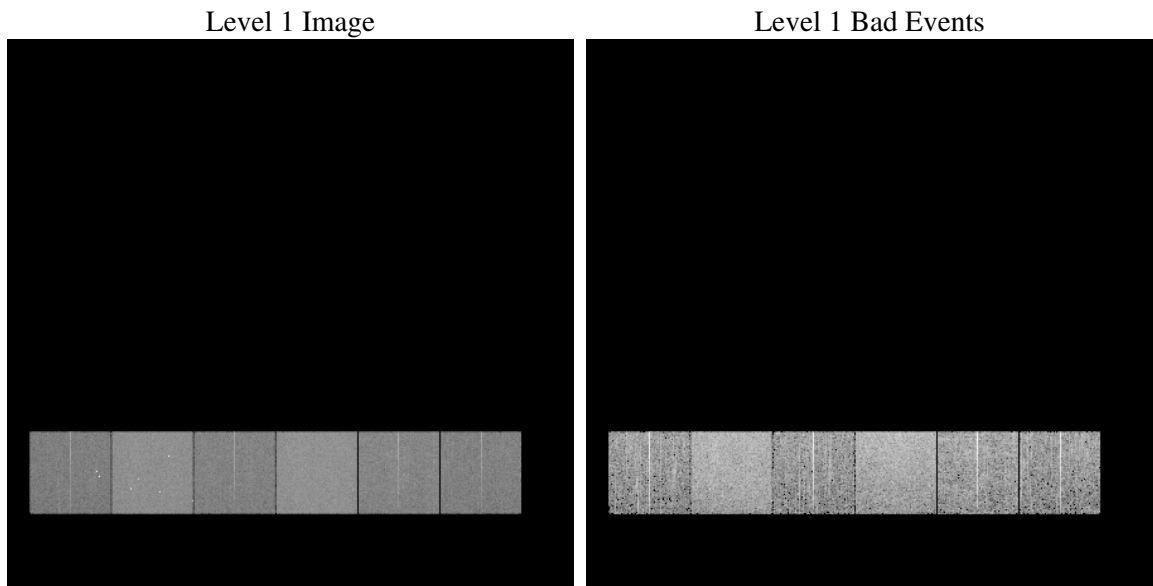
# 1 Front

seq_num	&#160
obs_id	60005
title	ACIS-456789 diagnostics
observer	CHANDRA engineering request/realtime commanding
object	&#160
dtcycle	0
cycle	P
ra_targ	0.0
dec_targ	0.0
ra_nom	0.031556442312062
dec_nom	-24.99959315993
roll_nom	327.968924509
revision	2
ontime	5531.0695826411
livetime	5461.0318491755
ontime4	3401.8680469096
ontime5	5531.1106226444
ontime6	3706.4802372158
ontime7	5531.0695826411
ontime8	3849.1659070253
ontime9	3641.5371041894
l2events	747352

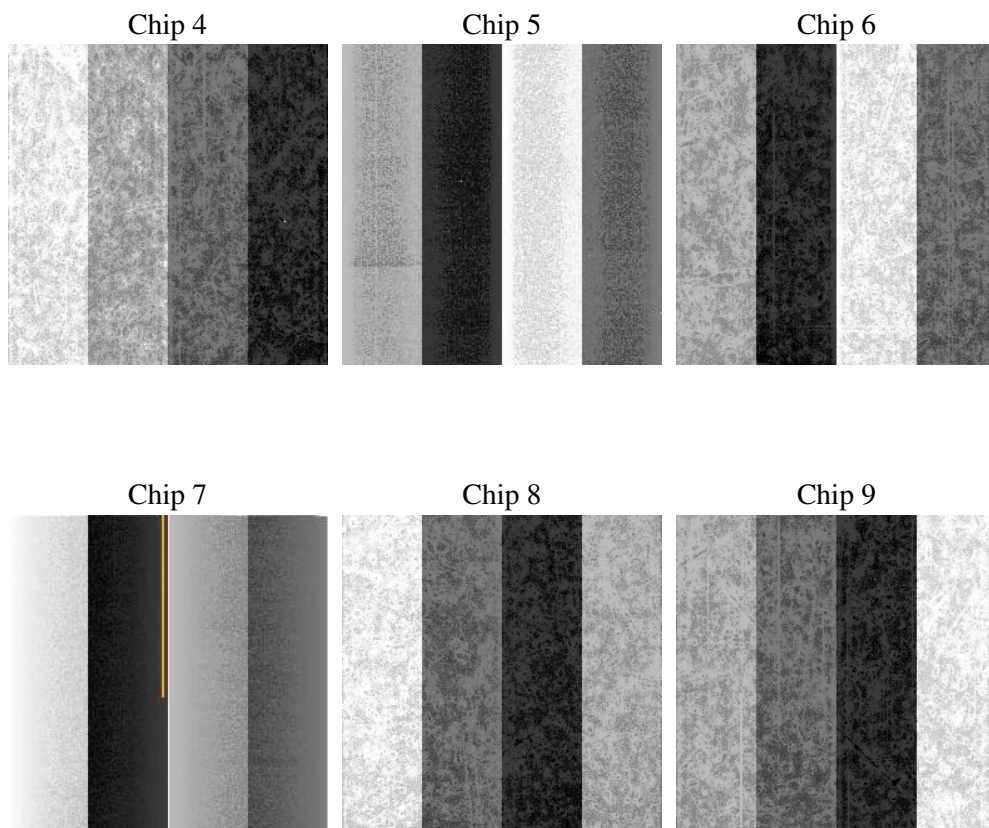
## 2 OBI

### 2.1 OBI

#### 2.1.1 Images



#### 2.1.2 Bias



### 2.1.3 Parameters

obi_num	0
ascdsver	7.6.7.1
caldbver	3.2.1
date	2006-04-15T16:48:19
revision	2

sched_exp_time	0.0
ontime	5532.3994972408
ontime4	3403.0748414993
ontime5	5532.3994972408
ontime6	3707.7280718088
ontime7	5532.3994972408
ontime8	3850.3316616416
ontime9	3642.9080587924
l1events	1011306

### 2.1.4 Events

	ccd 4	ccd 5	ccd 6	ccd 7	ccd 8	ccd 9
level 1 events	133254	207333	147904	219439	161167	142209
rejected events	30741	46273	30573	44527	35107	30654
rejected %	23%	22%	20%	20%	21%	21%

	ccd 4	ccd 5	ccd 6	ccd 7	ccd 8	ccd 9
grade 0 events	58665	18656	62756	29227	67626	60819
	44%	8%	42%	13%	41%	42%
grade 1 events	480	112	374	93	444	449
	0%	0%	0%	0%	0%	0%
grade 2 events	15920	74891	20335	53303	21947	18946
	11%	36%	13%	24%	13%	13%
grade 3 events	7288	4960	7331	12096	8177	6978
	5%	2%	4%	5%	5%	4%
grade 4 events	7192	4738	7249	11787	8099	7156
	5%	2%	4%	5%	5%	5%
grade 5 events	1802	4586	1969	5126	2399	2050
	1%	2%	1%	2%	1%	1%
grade 6 events	13448	57815	19660	68499	20211	17656
	10%	27%	13%	31%	12%	12%
grade 7 events	28459	41575	28230	39308	32264	28155
	21%	20%	19%	17%	20%	19%

## 2.2 Compared Parameters

Parameter	Planned	Actual	Parameter	Planned	Actual
Instrument	ACIS	ACIS	Obspar format version number	6	6
Detector	ACIS-456789	ACIS-456789	Obspar file type	PREDICTED	ACTUAL
Grating	NONE	NONE	Obspar update status	NONE	UPDATED
Data mode	FAINT	FAINT	On-chip summing requested	N	N
Observation mode	SECONDARY	SECONDARY	Subarray requested	NONE	NONE
Pointing RA	0	0.03155644231206244	Alternating exposures requested	N	N
Pointing Dec	0	-24.99959315993034	Primary exposure time	3.2	3.2
Pointing Roll	0.0	327.9689245089982			
SIM focus pos (mm)	-0.684267	-0.6828225247311905			
SIM defocus (mm)	0	0.8505141146731063			
SIM translation stage pos (mm)	-190.132523	250.4635187648994			
SIM translation stage offset (mm)	0	-0.007540371344731511			
Observation start time	214102579.680632	214102578.65563			
Observation start date	2004-10-14T00:56:20	2004-10-14T00:56:18			
Observation end time	214121150.631462	214121149.60646			
Observation end date	2004-10-14T06:05:51	2004-10-14T06:05:49			
Read mode	TIMED	TIMED			

## 2.3 Aspect



## **2.4 Star Slots**

## **2.5 FID Slots**



## A Summary

### A.1 Status

V&V Scientist	Beth Sundheim
V&V Date (YYYY-MM-DD)	2006.04.16
V&V Edition	1
V&V Disposition and Status	OK
V&V Charge Time	5.53106958

### A.2 Comments