

# V&V Reference Report

## L2 ASCDS Version : 7.6.7.1

Observation 59995 - L2 Version 001  
Chandra X-Ray Center

L2 Processing Date : Apr 14 2006

## Contents

<b>1</b>	<b>Front</b>	<b>2</b>
<b>2</b>	<b>OBI</b>	<b>3</b>
2.1	OBI . . . . .	3
2.1.1	Images . . . . .	3
2.1.2	Bias . . . . .	3
2.1.3	Parameters . . . . .	4
2.1.4	Events . . . . .	4
2.2	Compared Parameters . . . . .	5
2.3	Aspect . . . . .	6
2.4	Star Slots . . . . .	8
2.5	FID Slots . . . . .	8
<b>A</b>	<b>Summary</b>	<b>9</b>
A.1	Status . . . . .	9
A.2	Comments . . . . .	9

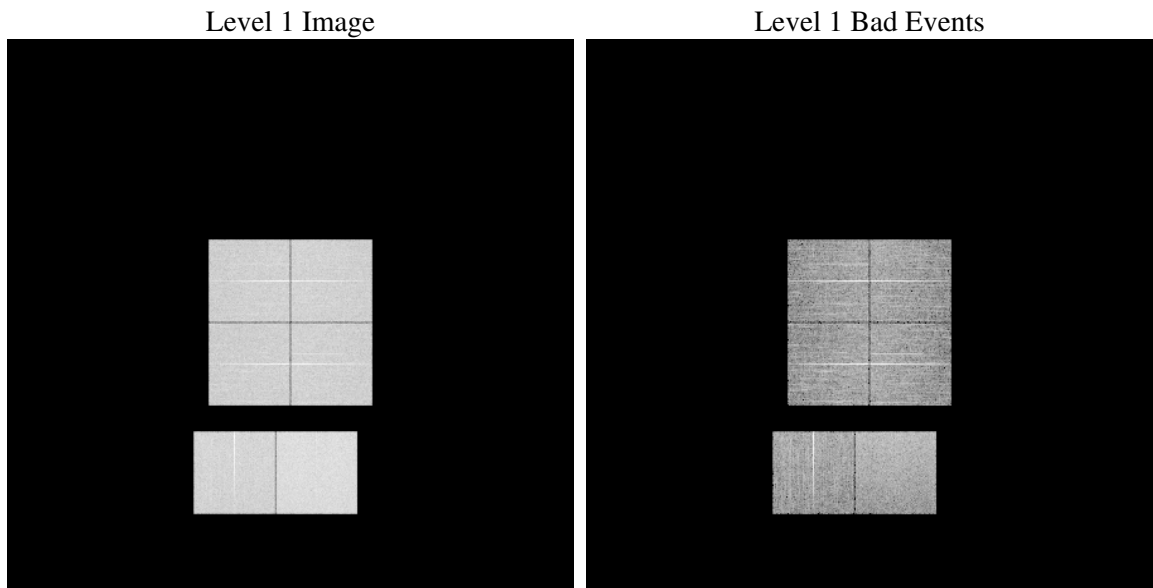
# 1 Front

seq_num	&#160
obs_id	59995
title	ACIS-012367 diagnostics
observer	CHANDRA engineering request/realtime commanding
object	&#160
dtcycle	0
cycle	P
ra_targ	0.0
dec_targ	0.0
ra_nom	23.986251091347
dec_nom	15.974640445318
roll_nom	209.56607941643
revision	2
ontime	8185.5999695063
livetime	8081.9489739158
ontime0	6428.9932962656
ontime1	6591.0429554582
ontime2	6161.0748511553
ontime3	6390.102388978
ontime6	6863.284290731
ontime7	8185.5999695063
l2events	1103624

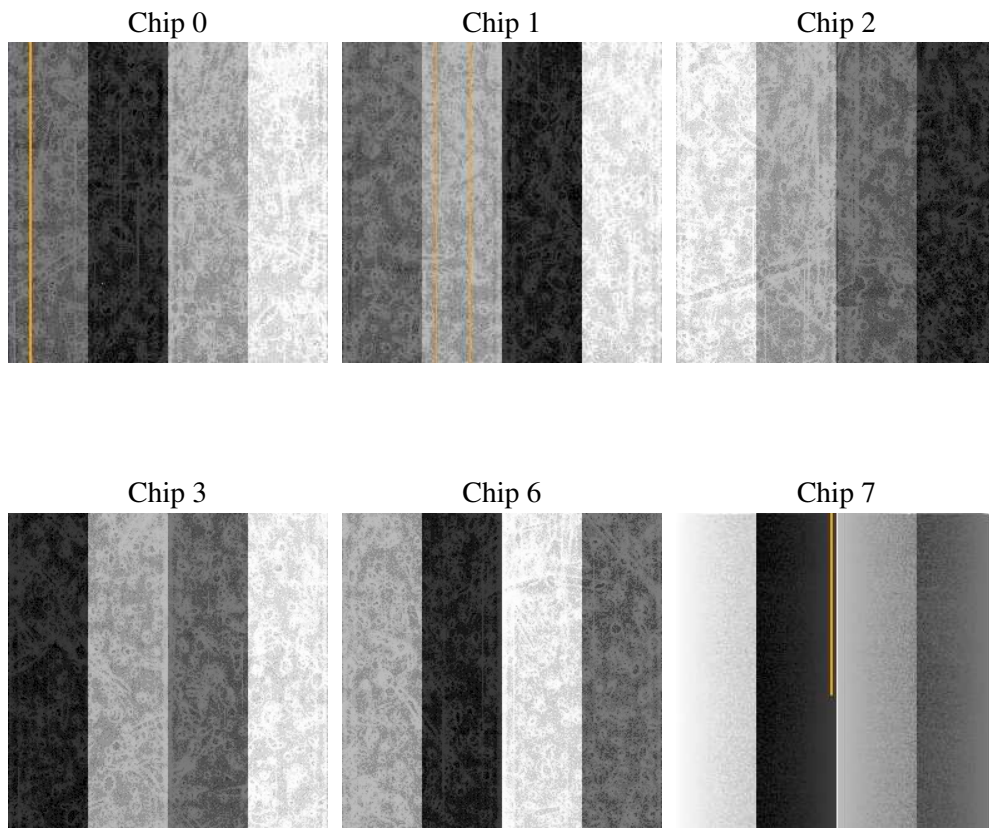
## 2 OBI

### 2.1 OBI

#### 2.1.1 Images



#### 2.1.2 Bias



### 2.1.3 Parameters

obi_num	0
ascdsver	7.6.7.1
caldsver	3.2.1
date	2006-04-15T01:28:54
revision	2

sched_exp_time	0.0
ontime	8277.524340421
ontime0	6511.1948060691
ontime1	6663.521474719
ontime2	6232.4706731141
ontime3	6456.0989277959
ontime6	6948.7267210186
ontime7	8277.524340421
l1events	1497970

### 2.1.4 Events

	ccd 0	ccd 1	ccd 2	ccd 3	ccd 6	ccd 7
level 1 events	230387	237181	226101	235102	256718	312481
rejected events	52123	53054	53735	55234	56723	68023
rejected %	22%	22%	23%	23%	22%	21%

	ccd 0	ccd 1	ccd 2	ccd 3	ccd 6	ccd 7
grade 0 events	99055	101328	97467	101271	109441	41627
	42%	42%	43%	43%	42%	13%
grade 1 events	643	563	727	727	642	114
	0%	0%	0%	0%	0%	0%
grade 2 events	31794	33246	29395	31091	34948	74806
	13%	14%	13%	13%	13%	23%
grade 3 events	11837	11995	11380	11865	12546	17271
	5%	5%	5%	5%	4%	5%
grade 4 events	11461	11979	11249	11883	12712	17152
	4%	5%	4%	5%	4%	5%
grade 5 events	3073	3184	2866	3282	3608	7686
	1%	1%	1%	1%	1%	2%
grade 6 events	26319	27575	24824	25568	32648	96302
	11%	11%	10%	10%	12%	30%
grade 7 events	46205	47311	48193	49415	50173	57523
	20%	19%	21%	21%	19%	18%

## 2.2 Compared Parameters

Parameter	Planned	Actual	Parameter	Planned	Actual
Instrument	ACIS	ACIS	Obspar format version number	6	6
Detector	ACIS-012367	ACIS-012367	Obspar file type	PREDICTED	ACTUAL
Grating	NONE	NONE	Obspar update status	NONE	UPDATED
Data mode	FAINT	FAINT	On-chip summing requested	N	N
Observation mode	SECONDARY	SECONDARY	Subarray requested	NONE	NONE
Pointing RA	0	23.98625109134731	Alternating exposures requested	N	N
Pointing Dec	0	15.97464044531751	Primary exposure time	3.2	3.2
Pointing Roll	0.0	209.5660794164293			
SIM focus pos (mm)	-0.782348	-0.6828225247311905			
SIM defocus (mm)	0	0.8505141146731063			
SIM translation stage pos (mm)	-233.592463	250.4635187648994			
SIM translation stage offset (mm)	0	-0.007540371344731511			
Observation start time	214787453.961266	214787452.93627			
Observation start date	2004-10-21T23:10:54	2004-10-21T23:10:52			
Observation end time	214809579.612256	214809578.58726			
Observation end date	2004-10-22T05:19:40	2004-10-22T05:19:38			
Read mode	TIMED	TIMED			

## 2.3 Aspect



## 2.4 Star Slots

## 2.5 FID Slots



## A Summary

### A.1 Status

V&V Scientist	Beth Sundheim
V&V Date (YYYY-MM-DD)	2006.04.16
V&V Edition	1
V&V Disposition and Status	OK
V&V Charge Time	8.18559996

### A.2 Comments