

V&V Reference Report

L2 ASCDS Version : 7.6.11.10

Observation 59855 - L2 Version 3
Chandra X-Ray Center

L2 Processing Date : Feb 4 2009

Contents

1	Front	2
2	OBI	3
2.1	OBI	3
2.1.1	Images	3
2.1.2	Bias	3
2.1.3	Parameters	4
2.1.4	Events	4
2.2	Compared Parameters	5
2.3	Star Slots	6
2.4	FID Slots	6
A	Summary	7
A.1	Status	7
A.2	Comments	7

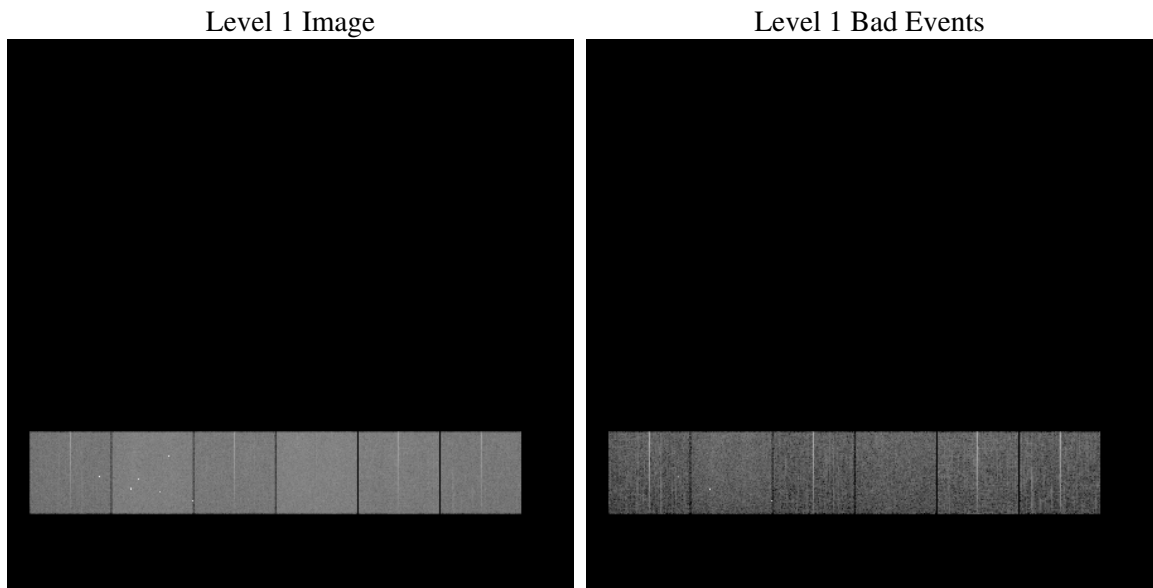
1 Front

seq_num	
obs_id	59855
title	ACIS-456789 diagnostics
observer	CHANDRA engineering request/realtime commanding
object	
dtcycle	0
cycle	P
ra_targ	0.0
dec_targ	0.0
ra_nom	108.98585246807
dec_nom	31.774168879841
roll_nom	212.09037603144
revision	3
ontime	7612.7999716401
livetime	7516.4021145214
ontime4	5716.8307447731
ontime5	7612.7999716401
ontime6	6313.1698465645
ontime7	7612.7999716401
ontime8	6400.6763039231
ontime9	6066.8558754921
l2events	1013742

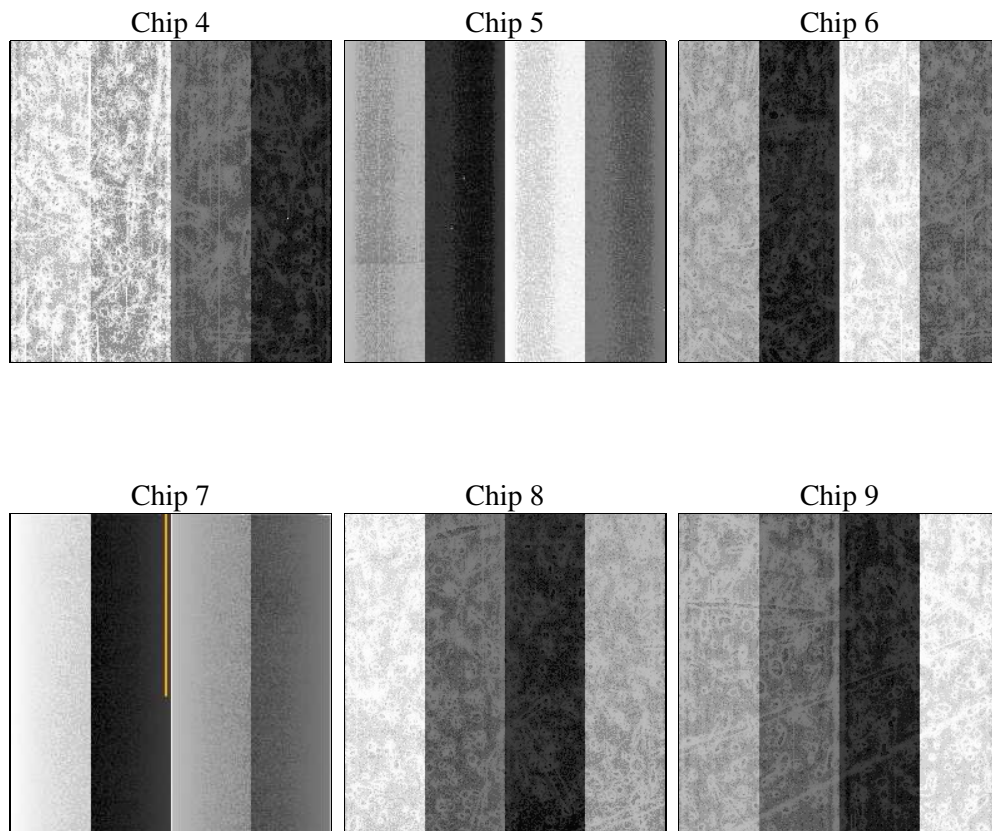
2 OBI

2.1 OBI

2.1.1 Images



2.1.2 Bias



2.1.3 Parameters

obi_num	0
ascdsver	7.6.11.10
caldsver	3.5.1
date	2009-02-04T12:44:42
revision	3

sched_exp_time	6360
ontime	7612.7999716401
ontime4	5716.8307447731
ontime5	7612.7999716401
ontime6	6313.1698465645
ontime7	7612.7999716401
ontime8	6400.6763039231
ontime9	6066.8558754921
l1events	1409243

2.1.4 Events

	ccd 4	ccd 5	ccd 6	ccd 7	ccd 8	ccd 9
level 1 events	197532	263189	222422	273877	240523	211700
rejected events	51721	61401	50803	52385	60200	52160
rejected %	26%	23%	22%	19%	25%	24%

	ccd 4	ccd 5	ccd 6	ccd 7	ccd 8	ccd 9
grade 0 events	87186	43782	94961	54237	100220	89730
	44%	16%	42%	19%	41%	42%
grade 1 events	679	431	548	185	525	533
	0%	0%	0%	0%	0%	0%
grade 2 events	23085	76818	30520	49974	32287	27876
	11%	29%	13%	18%	13%	13%
grade 3 events	9948	11201	10870	22704	12159	10300
	5%	4%	4%	8%	5%	4%
grade 4 events	10076	11022	11033	22233	11896	10525
	5%	4%	4%	8%	4%	4%
grade 5 events	2616	8781	3061	8273	3711	3154
	1%	3%	1%	3%	1%	1%
grade 6 events	18993	63938	28058	77731	28117	24782
	9%	24%	12%	28%	11%	11%
grade 7 events	44949	47216	43371	38540	51608	44800
	22%	17%	19%	14%	21%	21%

2.2 Compared Parameters

Parameter	Planned	Actual
Instrument	ACIS	ACIS
Detector	ACIS-456789	ACIS-456789
Grating	NONE	NONE
Data mode	FAINT	FAINT
Observation mode	SECONDARY	SECONDARY
Pointing RA	108.98585246807	108.98585246807
Pointing Dec	31.77416887984104	31.77416887984104
Pointing Roll	212.0903760314363	212.0903760314363
SIM focus pos (mm)	-0.68282252473119	-0.68282252473119
SIM defocus (mm)	0.8505140384245534	0.8505140384245534
SIM translation stage pos (mm)	250.4660330802	250.4660330802
SIM translation stage offset (mm)	-0.01005726120527584	-0.01005726120527584
Observation start time	222059370.088141	222059370.088141
Observation start date	2005-01-14T03:39:00	2005-01-14T03:09:30
Observation end time	222068889.01756	222068889.01756
Observation end date	2005-01-14T05:25:00	2005-01-14T05:48:09
Read mode	TIMED	TIMED

Parameter	Planned	Actual
Obspar format version number	6	6
Obspar file type	PREDICTED	ACTUAL
Obspar update status	OVERRIDE	OVERRIDE
Number of optional ACIS chips dropped	0	0
On-chip summing requested	N	N
Subarray requested	NONE	NONE
Alternating exposures requested	N	N
Primary exposure time	3.2	3.2

2.3 Star Slots

2.4 FID Slots

A Summary

A.1 Status

V&V Scientist	Beth Sundheim
V&V Date (YYYY-MM-DD)	2009.02.05
V&V Edition	1
V&V Disposition and Status	OK
V&V Charge Time	7.61279997

A.2 Comments

This obsid was reprocessed to correct minor errors in parameters used in processing. Some of these parameters cannot be determined automatically for this observation and were derived from spacecraft telemetry.

Focal plane temperature is warmer than -118.7 C degrees during the first ~5 ksec of this observation. The ACIS spectral response calibration for the front-illuminated chips is less accurate at these warmer temperatures than it is at -119.7 C. The back-illuminated chips are not affected at the focal plane temperatures recorded for this observation.