

V&V Reference Report

L2 ASCDS Version : 7.6.7

Observation 59835 - L2 Version 002
Chandra X-Ray Center

L2 Processing Date: Feb 18 2006

Contents

1	Front	2
2	OBI	3
2.1	OBI	3
2.1.1	Images	3
2.1.2	Bias	3
2.1.3	Parameters	4
2.1.4	Events	4
2.2	Compared Parameters	5
2.3	Aspect	6
2.4	Star Slots	8
2.5	FID Slots	8
A	Summary	9
A.1	Status	9
A.2	Comments	9

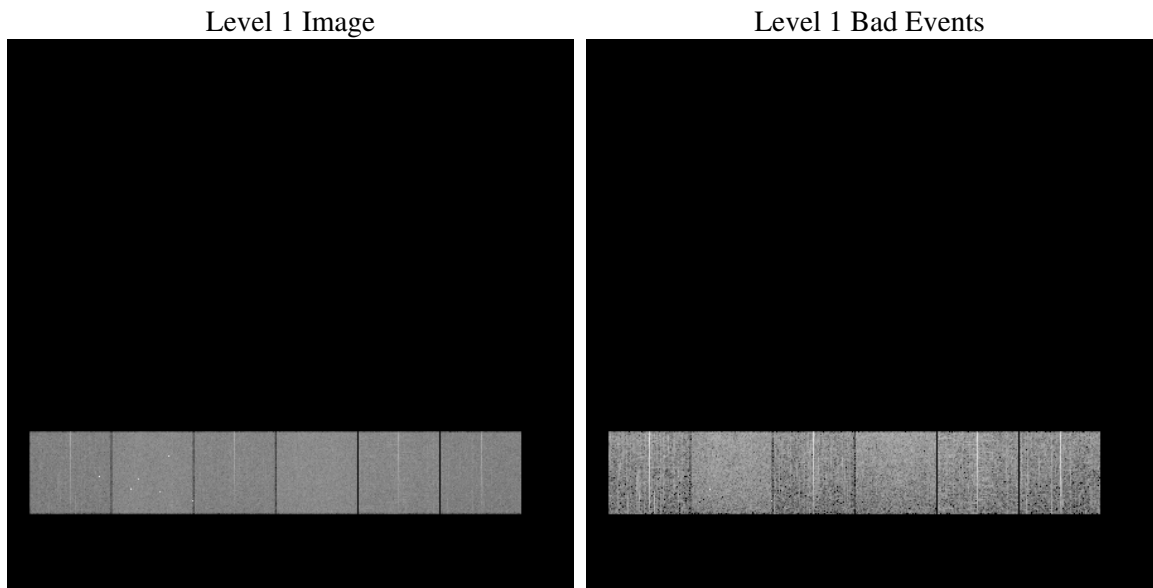
1 Front

seq_num	
obs_id	59835
title	ACIS-456789 diagnostics
observer	CHANDRA engineering request/realtime commanding
object	
dtcycle	0
cycle	P
ra_targ	0.0
dec_targ	0.0
ra_nom	132.52252644562
dec_nom	7.5203552800352
roll_nom	23.989905104556
revision	2
ontime	5304.8352184296
livetime	5237.6622007055
ontime4	4232.1982939243
ontime5	5304.8762584329
ontime6	4556.2540819645
ontime7	5304.8352184296
ontime8	4656.8062203228
ontime9	4355.1909138262
l2events	707887

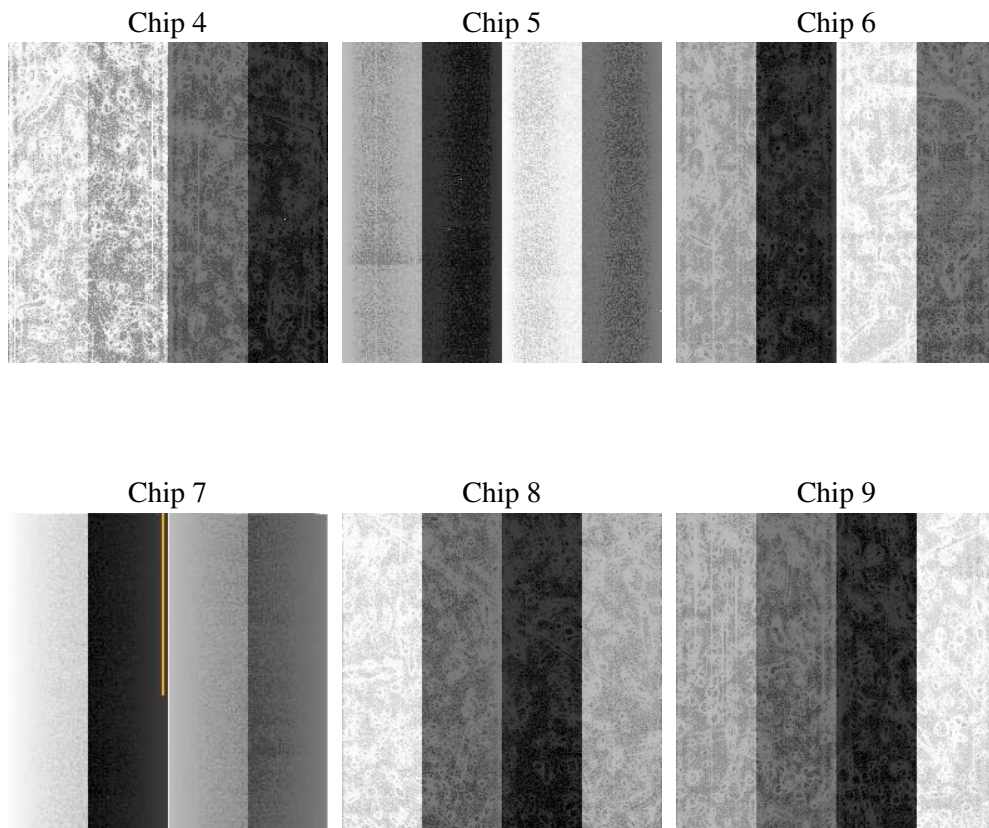
2 OBI

2.1 OBI

2.1.1 Images



2.1.2 Bias



2.1.3 Parameters

obi_num	0
ascdsver	7.6.7
caldbver	3.2.1
date	2006-02-18T09:08:26
revision	2

sched_exp_time	0.0
ontime	5305.5195195079
ontime4	4232.7594749928
ontime5	5305.5195195079
ontime6	4556.8563030362
ontime7	5305.5195195079
ontime8	4657.3263614178
ontime9	4355.9162549078
l1events	965253

2.1.4 Events

	ccd 4	ccd 5	ccd 6	ccd 7	ccd 8	ccd 9
level 1 events	140702	174028	156566	182385	166937	144635
rejected events	33670	39417	32358	37155	37023	31413
rejected %	23%	22%	20%	20%	22%	21%

	ccd 4	ccd 5	ccd 6	ccd 7	ccd 8	ccd 9
grade 0 events	62348	15437	67191	24407	70151	62454
	44%	8%	42%	13%	42%	43%
grade 1 events	475	152	324	67	401	338
	0%	0%	0%	0%	0%	0%
grade 2 events	17019	62524	21662	44385	22751	19308
	12%	35%	13%	24%	13%	13%
grade 3 events	7115	4094	7771	9979	8614	7104
	5%	2%	4%	5%	5%	4%
grade 4 events	7075	4001	7756	10030	8654	7163
	5%	2%	4%	5%	5%	4%
grade 5 events	1916	3947	2066	4374	2492	2072
	1%	2%	1%	2%	1%	1%
grade 6 events	13475	48555	19828	56429	19744	17193
	9%	27%	12%	30%	11%	11%
grade 7 events	31279	35318	29968	32714	34130	29003
	22%	20%	19%	17%	20%	20%

2.2 Compared Parameters

Parameter	Planned	Actual	Parameter	Planned	Actual
Instrument	ACIS	ACIS	Obspar format version number	6	6
Detector	ACIS-456789	ACIS-456789	Obspar file type	PREDICTED	ACTUAL
Grating	NONE	NONE	Obspar update status	NONE	UPDATED
Data mode	FAINT	FAINT	On-chip summing requested	N	N
Observation mode	SECONDARY	SECONDARY	Subarray requested	NONE	NONE
Pointing RA	0	132.5225264456165	Alternating exposures requested	N	N
Pointing Dec	0	7.520355280035222	Primary exposure time	3.2	3.2
Pointing Roll	0.0	23.98990510455606			
SIM focus pos (mm)	-0.684267	-0.7809083437167272			
SIM defocus (mm)	0	0.7524282956875696			
SIM translation stage pos (mm)	-190.132523	250.466033080201			
SIM translation stage offset (mm)	0	-0.01005468664627074			
Observation start time	222970447.529245	222970446.50423			
Observation start date	2005-01-24T16:14:08	2005-01-24T16:14:06			
Observation end time	222989721.630115	222989720.6051			
Observation end date	2005-01-24T21:35:22	2005-01-24T21:35:20			
Read mode	TIMED	TIMED			

2.3 Aspect

2.4 Star Slots

2.5 FID Slots

A Summary

A.1 Status

V&V Scientist	Jen Lauer
V&V Date (YYYY-MM-DD)	2006.02.19
V&V Edition	1
V&V Disposition and Status	OK
V&V Charge Time	5.30483521

A.2 Comments