

# V&V Reference Report

## L2 ASCDS Version : 8.5.1

Observation 59765 - L2 Version 3  
Chandra X-Ray Center

L2 Processing Date : Dec 18 2012

## Contents

<b>1</b>	<b>Front</b>	<b>2</b>
<b>2</b>	<b>OBI</b>	<b>3</b>
2.1	OBI . . . . .	3
2.1.1	Images . . . . .	3
2.1.2	Bias . . . . .	3
2.1.3	Parameters . . . . .	4
2.1.4	Events . . . . .	4
2.2	Compared Parameters . . . . .	5
2.3	Star Slots . . . . .	6
2.4	FID Slots . . . . .	6
<b>A</b>	<b>Summary</b>	<b>7</b>
A.1	Status . . . . .	7
A.2	Comments . . . . .	7

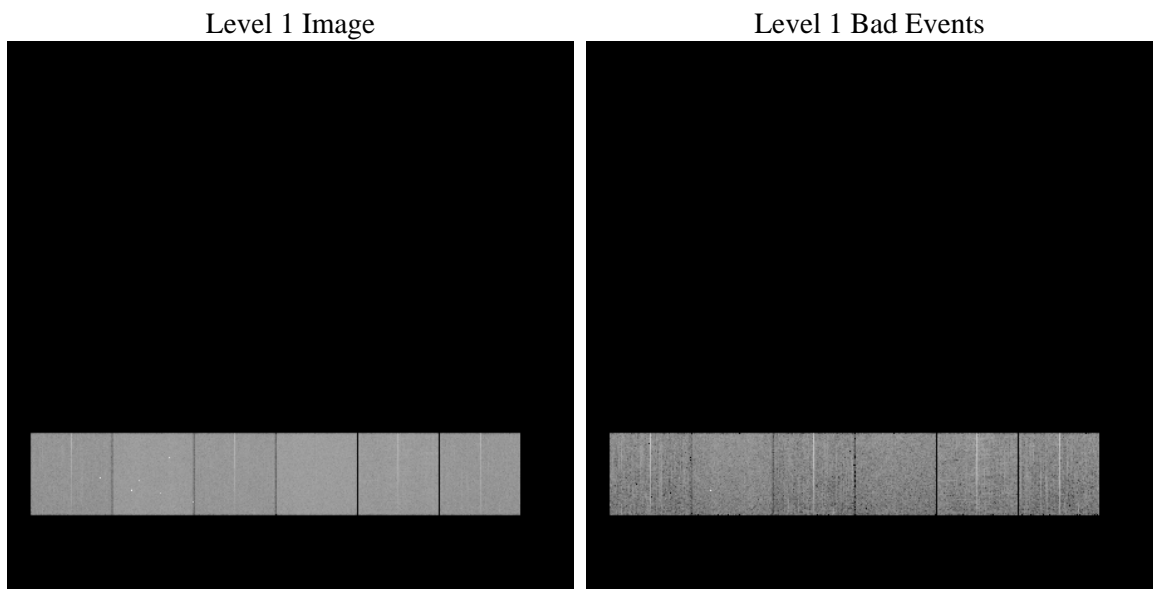
# 1 Front

seq_num	&#160	Sequence number
obs_id	59765	Observation id
title	ACIS-456789 diagnostics	Proposal title
observer	CHANDRA engineering request/realtime commanding	Principal investig
object	&#160	Source name
dtcycle	0	&#160
cycle	P	events from which exps? Prim/Second/Both
ra_targ	0.0	Observer's specified target RA [deg]
dec_targ	0.0	Observer's specified target Dec [deg]
ra_nom	158.02076160165	Nominal RA [deg]
dec_nom	2.4802954790743	Nominal Dec [deg]
roll_nom	283.5604014379	Nominal Roll [deg]
revision	3	Processing version of data
ontime	7800.9043411911	Sum of GTIs [s]
livetime	7702.1245932822	Livetime [s]
ontime4	6128.7527357638	Sum of GTIs [s]
ontime5	7800.8633011878	Sum of GTIs [s]
ontime6	6630.8325464427	Sum of GTIs [s]
ontime7	7800.9043411911	Sum of GTIs [s]
ontime8	7006.7028898597	Sum of GTIs [s]
ontime9	6540.2089263201	Sum of GTIs [s]
l2events	1033634	Number of level 2 events

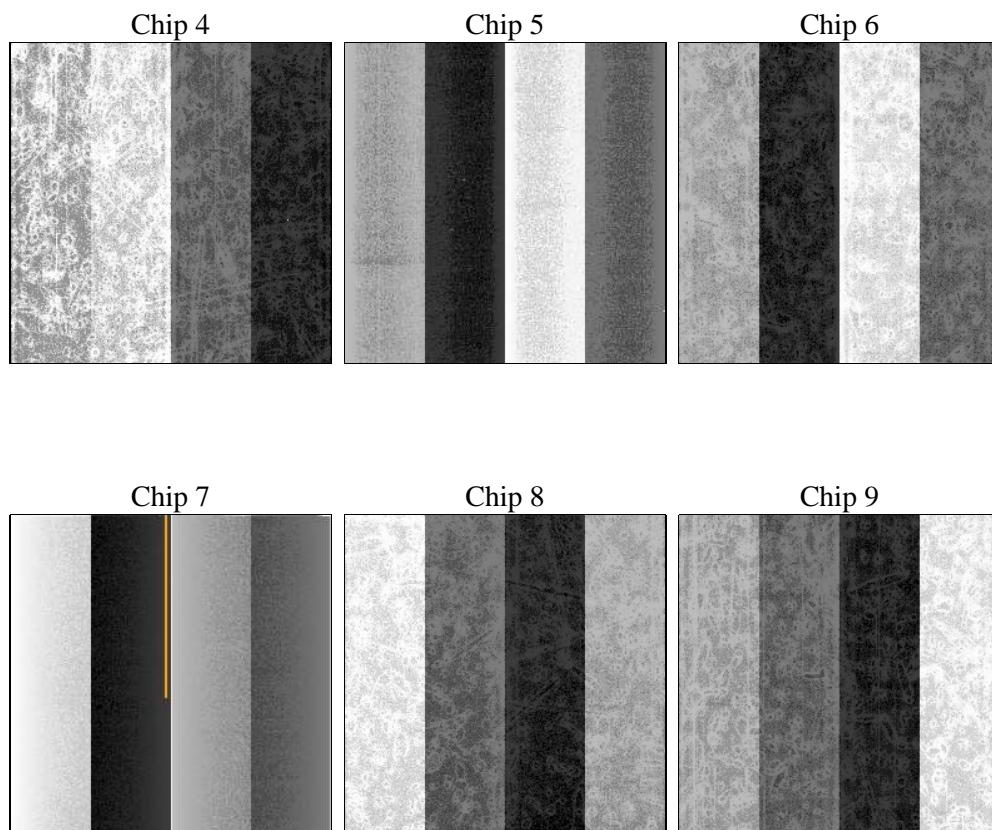
## 2 OBI

### 2.1 OBI

#### 2.1.1 Images



#### 2.1.2 Bias



### 2.1.3 Parameters

obi_num	0	Obi number	sched_exp_time	0.0	[s] Scheduled observation exposure time
ascdsver	8.5.1	Processing system revision	ontime	7800.9043411911	Sum of GTIs [s]
caldsver	4.5.5	&#160	ontime4	6128.7527357638	Sum of GTIs [s]
date	2012-12-18T08:34:13	Date and time of file creation	ontime5	7800.8633011878	Sum of GTIs [s]
revision	3	Processing version of data	ontime6	6630.8325464427	Sum of GTIs [s]
			ontime7	7800.9043411911	Sum of GTIs [s]
			ontime8	7006.7028898597	Sum of GTIs [s]
			ontime9	6540.2089263201	Sum of GTIs [s]
			l1events	1407434	Number of level 1 events

### 2.1.4 Events

	ccd 4	ccd 5	ccd 6	ccd 7	ccd 8	ccd 9		ccd 4	ccd 5	ccd 6	ccd 7	ccd 8	ccd 9
level 1 events	201487	253618	223276	267343	247327	214383	grade 0 events	88096	41427	94511	52699	103235	90645
rejected events	49899	54676	48674	46991	56700	49344		43%	16%	42%	19%	41%	42%
rejected %	24%	21%	21%	17%	22%	23%	grade 1 events	713	184	486	153	520	576
								0%	0%	0%	0%	0%	0%
							grade 2 events	23918	73241	30270	48834	33729	28134
								11%	28%	13%	18%	13%	13%
							grade 3 events	10126	11289	10943	22139	12468	10631
								5%	4%	4%	8%	5%	4%
							grade 4 events	10004	10957	10841	22023	12254	10514
								4%	4%	4%	8%	4%	4%
							grade 5 events	2725	8679	3119	8253	4046	3277
								1%	3%	1%	3%	1%	1%
							grade 6 events	19444	62028	28037	74657	28941	25115
								9%	24%	12%	27%	11%	11%
							grade 7 events	46461	45813	45069	38585	52134	45491
								23%	18%	20%	14%	21%	21%

## 2.2 Compared Parameters

Parameter	Planned	Actual	Parameter	Planned	Actual
Instrument	ACIS	ACIS	Obspar format version number	7	7
Detector	ACIS-456789	ACIS-456789	Obspar file type	PREDICTED	ACTUAL
Grating	NONE	NONE	Obspar update status	NONE	UPDATED
Data mode	FAINT	FAINT	On-chip summing requested	N	N
Observation mode	SECONDARY	SECONDARY	Subarray requested	NONE	NONE
[deg] Pointing RA	0	158.0207616016549	Alternating exposures requested	N	N
[deg] Pointing Dec	0	2.480295479074264	[s] Primary exposure time	3.2	3.2
[deg] Pointing Roll	0.0	283.5604014379005			
[mm] SIM focus pos	-0.684267	-0.6828225247311905			
[mm] SIM defocus	0	0.8505141146731063			
[mm] SIM translation stage pos	-190.132523	250.466033080201			
[mm] SIM translation stage offset	0	-0.01005468664627074			
[s] Observation start time (MET)	226628438.994776	226628437.96977			
Observation start date	2005-03-08T00:20:39	2005-03-08T00:20:37			
[s] Observation end time (MET)	226644828.745519	226644827.72051			
Observation end date	2005-03-08T04:53:49	2005-03-08T04:53:47			
Read mode	TIMED	TIMED			

## 2.3 Star Slots

## 2.4 FID Slots

## **A Summary**

### **A.1 Status**

V&V Scientist	Jen Lauer
V&V Date (YYYY-MM-DD)	2013.01.11
V&V Edition	1
V&V Disposition and Status	OK
V&V Charge Time	7.8009043411911

### **A.2 Comments**