

# V&V Reference Report

## L2 ASCDS Version : 8.4.3.1

Observation 58865 - L2 Version 2  
Chandra X-Ray Center

L2 Processing Date : Apr 6 2012

## Contents

<b>1</b>	<b>Front</b>	<b>2</b>
<b>2</b>	<b>OBI</b>	<b>3</b>
2.1	OBI . . . . .	3
2.1.1	Images . . . . .	3
2.1.2	Bias . . . . .	3
2.1.3	Parameters . . . . .	4
2.1.4	Events . . . . .	4
2.2	Compared Parameters . . . . .	5
2.3	Star Slots . . . . .	6
2.4	FID Slots . . . . .	6
<b>A</b>	<b>Summary</b>	<b>7</b>
A.1	Status . . . . .	7
A.2	Comments . . . . .	7

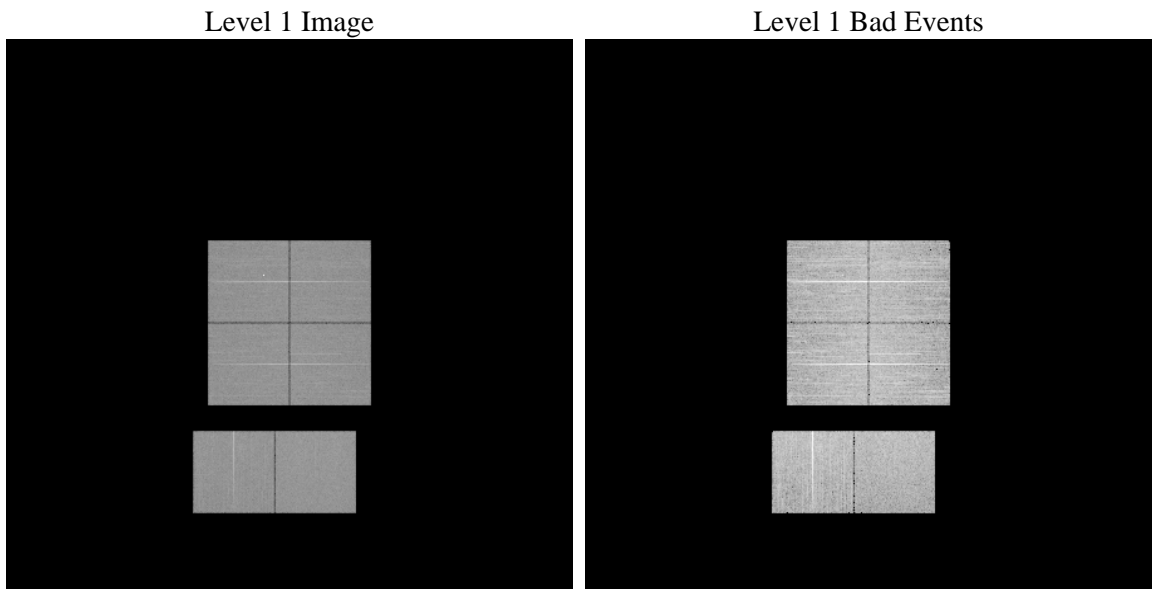
# 1 Front

seq_num	&#160	Sequence number
obs_id	58865	Observation id
title	ACIS-012367 diagnostics	Proposal title
observer	CHANDRA engineering request/realtime commanding	Principal investig
object	&#160	Source name
dtcycle	0	&#160
cycle	P	events from which exps? Prim/Second/Both
ra_targ	0.0	Observer's specified target RA [deg]
dec_targ	0.0	Observer's specified target Dec [deg]
ra_nom	19.974882704998	Nominal RA [deg]
dec_nom	3.0164446259801	Nominal Dec [deg]
roll_nom	111.11769920161	Nominal Roll [deg]
revision	2	Processing version of data
ontime	8273.7439841628	Sum of GTIs [s]
livetime	8168.9768559848	Livetime [s]
ontime0	8270.4619739056	Sum of GTIs [s]
ontime1	8273.6619041562	Sum of GTIs [s]
ontime2	8273.6208641529	Sum of GTIs [s]
ontime3	8273.7850241661	Sum of GTIs [s]
ontime6	8273.5798241496	Sum of GTIs [s]
ontime7	8273.7439841628	Sum of GTIs [s]
l2events	871954	Number of level 2 events

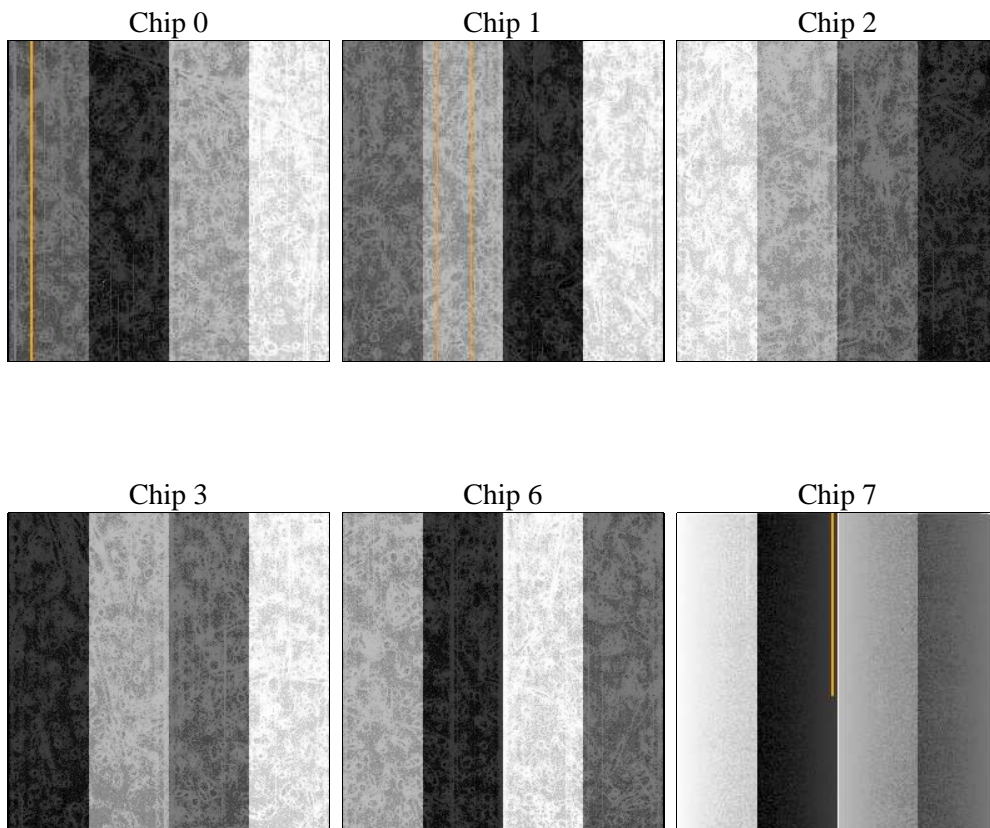
## 2 OBI

### 2.1 OBI

#### 2.1.1 Images



#### 2.1.2 Bias



### 2.1.3 Parameters

obi_num	0	Obi number	sched_exp_time	0.0	[s] Scheduled observation exposure time
ascdsver	8.4.3.1	Processing system revision	ontime	8273.7439841628	Sum of GTIs [s]
caldsver	4.4.9	&#160	ontime0	8270.4619739056	Sum of GTIs [s]
date	2012-04-06T02:45:14	Date and time of file creation	ontime1	8273.6619041562	Sum of GTIs [s]
revision	2	Processing version of data	ontime2	8273.6208641529	Sum of GTIs [s]
			ontime3	8273.7850241661	Sum of GTIs [s]
			ontime6	8273.5798241496	Sum of GTIs [s]
			ontime7	8273.7439841628	Sum of GTIs [s]
			l1events	1348825	Number of level 1 events

### 2.1.4 Events

	ccd 0	ccd 1	ccd 2	ccd 3	ccd 6	ccd 7		ccd 0	ccd 1	ccd 2	ccd 3	ccd 6	ccd 7
level 1 events	220402	215467	222201	223580	227132	240043	grade 0 events	79782	77565	82856	83207	79697	38115
rejected events	72098	69037	75070	75271	75183	61588		36%	35%	37%	37%	35%	15%
rejected %	32%	32%	33%	33%	33%	25%	grade 1 events	516	409	587	540	406	162
								0%	0%	0%	0%	0%	0%
							grade 2 events	27912	27912	23802	24424	28454	39482
								12%	12%	10%	10%	12%	16%
							grade 3 events	9489	9357	9918	9842	9298	16954
								4%	4%	4%	4%	4%	7%
							grade 4 events	9415	9076	9666	9875	9094	16493
								4%	4%	4%	4%	4%	6%
							grade 5 events	3814	3860	3679	4121	3988	10009
								1%	1%	1%	1%	1%	4%
							grade 6 events	21706	22520	20889	20961	25406	67411
								9%	10%	9%	9%	11%	28%
							grade 7 events	67768	64768	70804	70610	70789	51417
								30%	30%	31%	31%	31%	21%

## 2.2 Compared Parameters

Parameter	Planned	Actual
Instrument	ACIS	ACIS
Detector	ACIS-012367	ACIS-012367
Grating	NONE	NONE
Data mode	FAINT	FAINT
Observation mode	SECONDARY	SECONDARY
[deg] Pointing RA	0	19.97488270499821
[deg] Pointing Dec	0	3.016444625980058
[deg] Pointing Roll	0.0	111.117699201615
[mm] SIM focus pos	-0.782348	-0.6828225247311905
[mm] SIM defocus	0	0.8505141146731063
[mm] SIM translation stage pos	-233.592463	250.4635187648994
[mm] SIM translation stage offset	0	-0.007540371344731511
[s] Observation start time (MET)	270076585.84913	270076584.82417
Observation start date	2006-07-23T21:16:26	2006-07-23T21:16:24
[s] Observation end time (MET)	270098865.250171	270098864.22521
Observation end date	2006-07-24T03:27:45	2006-07-24T03:27:44
Read mode	TIMED	TIMED

Parameter	Planned	Actual
Obspar format version number	7	7
Obspar file type	PREDICTED	ACTUAL
Obspar update status	NONE	UPDATED
On-chip summing requested	N	N
Subarray requested	NONE	NONE
Alternating exposures requested	N	N
[s] Primary exposure time	3.2	3.2

## **2.3 Star Slots**

## **2.4 FID Slots**

## **A Summary**

### **A.1 Status**

V&V Scientist	Jen Lauer
V&V Date (YYYY-MM-DD)	2012.04.06
V&V Edition	1
V&V Disposition and Status	OK
V&V Charge Time	8.2737439841628

### **A.2 Comments**