

V&V Reference Report

L2 ASCDS Version : 8.4.3.1

Observation 58735 - L2 Version 2
Chandra X-Ray Center

L2 Processing Date : Apr 11 2012

Contents

1	Front	2
2	OBI	3
2.1	OBI	3
2.1.1	Images	3
2.1.2	Bias	3
2.1.3	Parameters	4
2.1.4	Events	4
2.2	Compared Parameters	5
2.3	Star Slots	6
2.4	FID Slots	6
A	Summary	7
A.1	Status	7
A.2	Comments	7

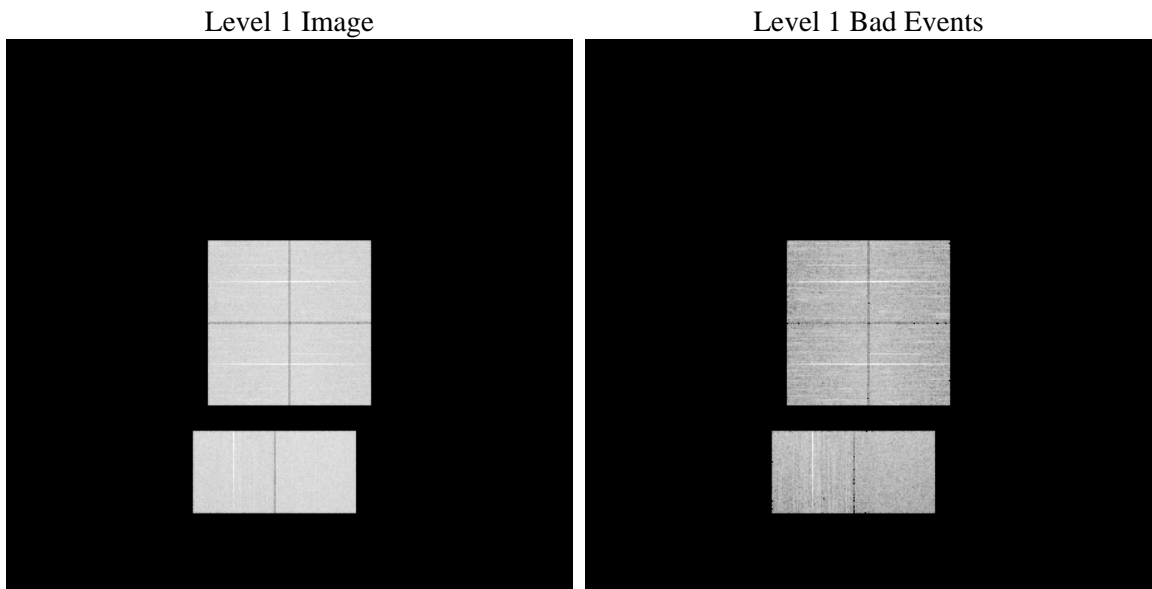
1 Front

seq_num	 	Sequence number
obs_id	58735	Observation id
title	ACIS-012367 diagnostics	Proposal title
observer	CHANDRA engineering request/realtime commanding	Principal investig
object	 	Source name
dtcycle	0	
cycle	P	events from which exps? Prim/Second/Both
ra_targ	0.0	Observer's specified target RA [deg]
dec_targ	0.0	Observer's specified target Dec [deg]
ra_nom	33.323771292461	Nominal RA [deg]
dec_nom	-12.84873304629	Nominal Dec [deg]
roll_nom	24.648897761101	Nominal Roll [deg]
revision	2	Processing version of data
ontime	7793.1124207973	Sum of GTIs [s]
livetime	7694.4313388763	Livetime [s]
ontime0	7793.1534408927	Sum of GTIs [s]
ontime1	7793.1945008039	Sum of GTIs [s]
ontime2	7793.2355208993	Sum of GTIs [s]
ontime3	7793.071380794	Sum of GTIs [s]
ontime6	7795.1999710202	Sum of GTIs [s]
ontime7	7793.1124207973	Sum of GTIs [s]
l2events	794962	Number of level 2 events

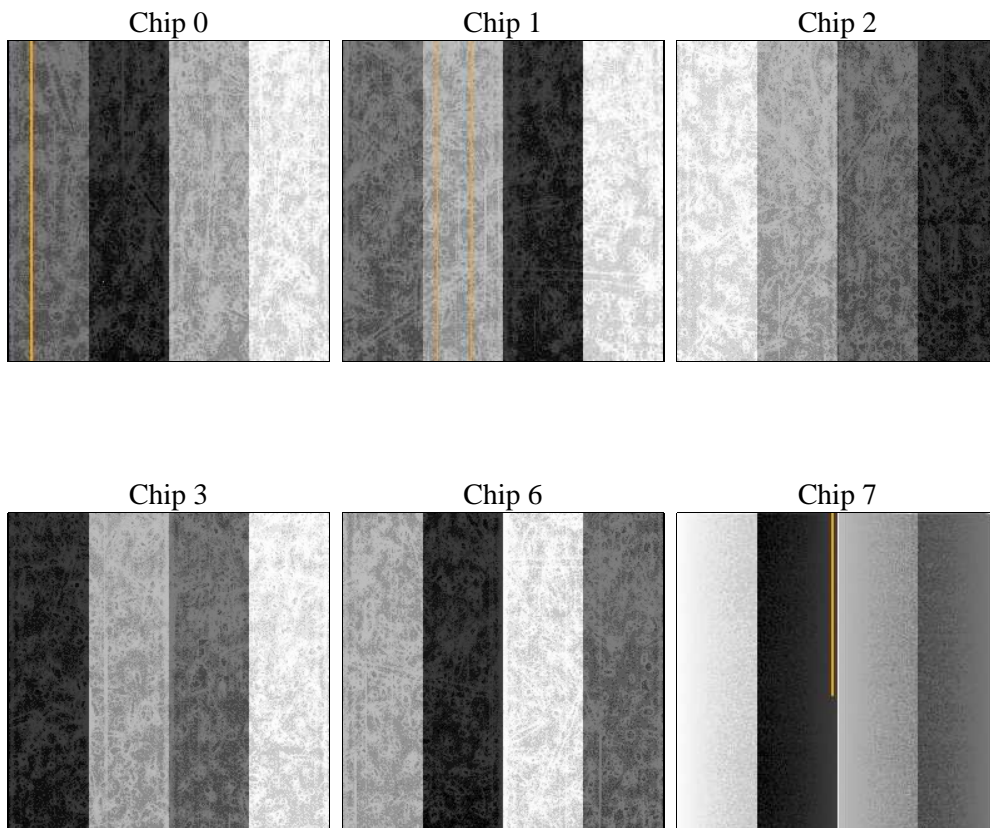
2 OBI

2.1 OBI

2.1.1 Images



2.1.2 Bias



2.1.3 Parameters

obi_num	0	Obi number	sched_exp_time	0.0	[s] Scheduled observation exposure time
ascdsver	8.4.3.1	Processing system revision	ontime	7793.1124207973	Sum of GTIs [s]
caldsver	4.4.9	 	ontime0	7793.1534408927	Sum of GTIs [s]
date	2012-04-11T18:07:58	Date and time of file creation	ontime1	7793.1945008039	Sum of GTIs [s]
revision	2	Processing version of data	ontime2	7793.2355208993	Sum of GTIs [s]
			ontime3	7793.071380794	Sum of GTIs [s]
			ontime6	7795.1999710202	Sum of GTIs [s]
			ontime7	7793.1124207973	Sum of GTIs [s]
			l1events	1232249	Number of level 1 events

2.1.4 Events

	ccd 0	ccd 1	ccd 2	ccd 3	ccd 6	ccd 7		ccd 0	ccd 1	ccd 2	ccd 3	ccd 6	ccd 7
level 1 events	197601	197352	202244	203902	208366	222784	grade 0 events	72085	72282	73881	74881	74815	35953
rejected events	65337	63785	68722	69165	69195	58447		36%	36%	36%	36%	35%	16%
rejected %	33%	32%	33%	33%	33%	26%	grade 1 events	477	450	526	493	458	174
								0%	0%	0%	0%	0%	0%
							grade 2 events	23357	24082	22956	23099	24187	35870
								11%	12%	11%	11%	11%	16%
							grade 3 events	8671	8590	8676	8900	8838	15940
								4%	4%	4%	4%	4%	7%
							grade 4 events	8720	8602	8804	9002	8790	15880
								4%	4%	4%	4%	4%	7%
							grade 5 events	3675	3804	3461	3996	4076	10021
								1%	1%	1%	1%	1%	4%
							grade 6 events	19431	20011	19205	18855	22541	60694
								9%	10%	9%	9%	10%	27%
							grade 7 events	61185	59531	64735	64676	64661	48252
								30%	30%	32%	31%	31%	21%

2.2 Compared Parameters

Parameter	Planned	Actual
Instrument	ACIS	ACIS
Detector	ACIS-012367	ACIS-012367
Grating	NONE	NONE
Data mode	FAINT	FAINT
Observation mode	SECONDARY	SECONDARY
[deg] Pointing RA	0	33.3237712924612
[deg] Pointing Dec	0	-12.84873304629047
[deg] Pointing Roll	0.0	24.64889776110082
[mm] SIM focus pos	-0.782348	-0.7809083437167272
[mm] SIM defocus	0	0.7524282956875696
[mm] SIM translation stage pos	-233.592463	250.466033080201
[mm] SIM translation stage offset	0	-0.01005468664627074
[s] Observation start time (MET)	277571548.151436	277571547.12646
Observation start date	2006-10-18T15:12:28	2006-10-18T15:12:27
[s] Observation end time (MET)	277589846.452298	277589845.42732
Observation end date	2006-10-18T20:17:26	2006-10-18T20:17:25
Read mode	TIMED	TIMED

Parameter	Planned	Actual
Obspar format version number	7	7
Obspar file type	PREDICTED	ACTUAL
Obspar update status	NONE	UPDATED
On-chip summing requested	N	N
Subarray requested	NONE	NONE
Alternating exposures requested	N	N
[s] Primary exposure time	3.2	3.2

2.3 Star Slots

2.4 FID Slots

A Summary

A.1 Status

V&V Scientist	Beth Sundheim
V&V Date (YYYY-MM-DD)	2012.04.11
V&V Edition	1
V&V Disposition and Status	OK
V&V Charge Time	7.7931124207973

A.2 Comments