

V&V Reference Report

L2 ASCDS Version : 8.4.3.1

Observation 5865 - L2 Version 2
Chandra X-Ray Center

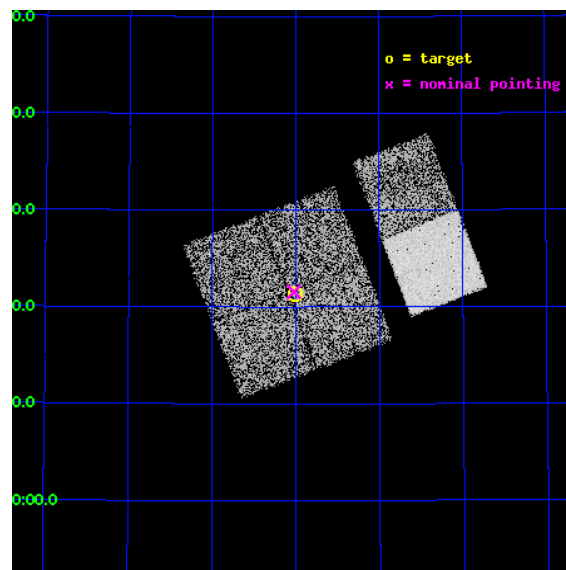
L2 Processing Date : Mar 24 2012

Contents

1	Front	2
2	OBI	3
2.1	OBI	3
2.1.1	Images	3
2.1.2	Bias	3
2.1.3	Parameters	4
2.1.4	Events	4
2.2	Compared Parameters	5
2.3	Aspect	6
2.4	Star Slots	9
2.4.1	Slot 3	9
2.4.2	Slot 4	10
2.4.3	Slot 5	11
2.4.4	Slot 6	12
2.4.5	Slot 7	13
2.5	FID Slots	14
2.5.1	Slot 0	14
2.5.2	Slot 1	15
2.5.3	Slot 2	16
A	Summary	17
A.1	Status	17
A.2	Comments	17

1 Front

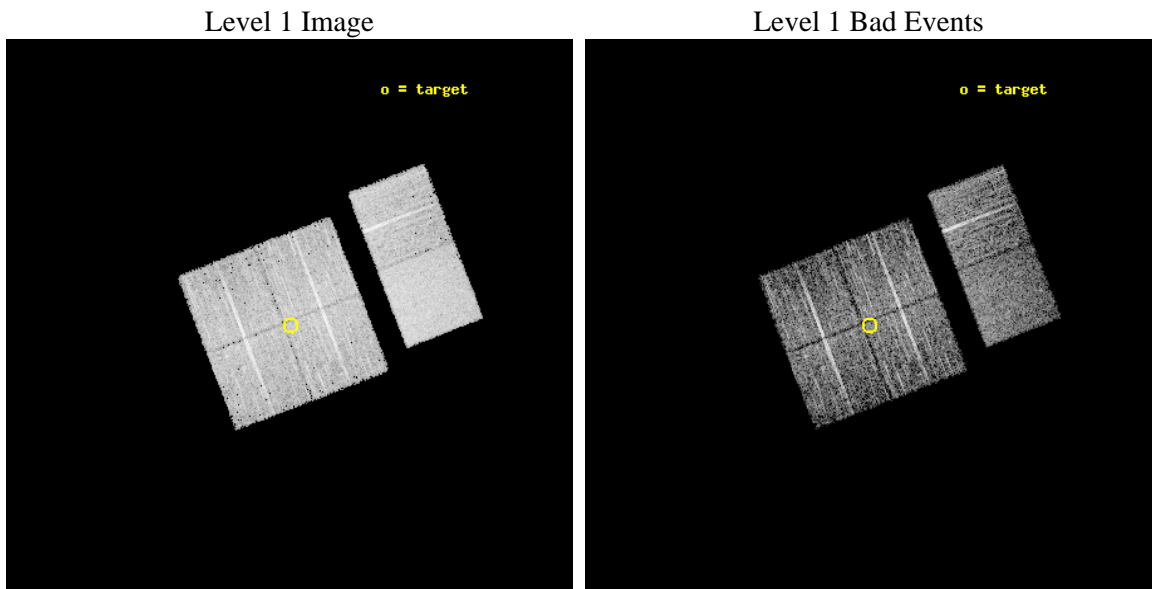
seq_num	900365	Sequence number
obs_id	5865	Observation id
title	The Spectral Energy Distributions of AGN: A Shallow Survey of the ELAIS-N1 Field	Proposal title
observer	Prof Kirpal Nandra	Principal investigator
object	N1_11	Source name
dtcycle	0	
cycle	P	events from which exps? Prim/Second/Both
ra_targ	242.250417	Observer's specified target RA [deg]
dec_targ	54.356194	Observer's specified target Dec [deg]
ra_nom	242.25604262059	Nominal RA [deg]
dec_nom	54.359529859275	Nominal Dec [deg]
roll_nom	68.874201192469	Nominal Roll [deg]
revision	2	Processing version of data
ontime	4668.7180120647	Sum of GTIs [s]
livetime	4609.5998934314	Livetime [s]
ontime0	4668.718071878	Sum of GTIs [s]
ontime1	4668.7180220485	Sum of GTIs [s]
ontime2	4671.95901227	Sum of GTIs [s]
ontime3	4668.7180120647	Sum of GTIs [s]
ontime6	4665.4770817161	Sum of GTIs [s]
ontime7	4671.9590122998	Sum of GTIs [s]
l2events	41925	Number of level 2 events



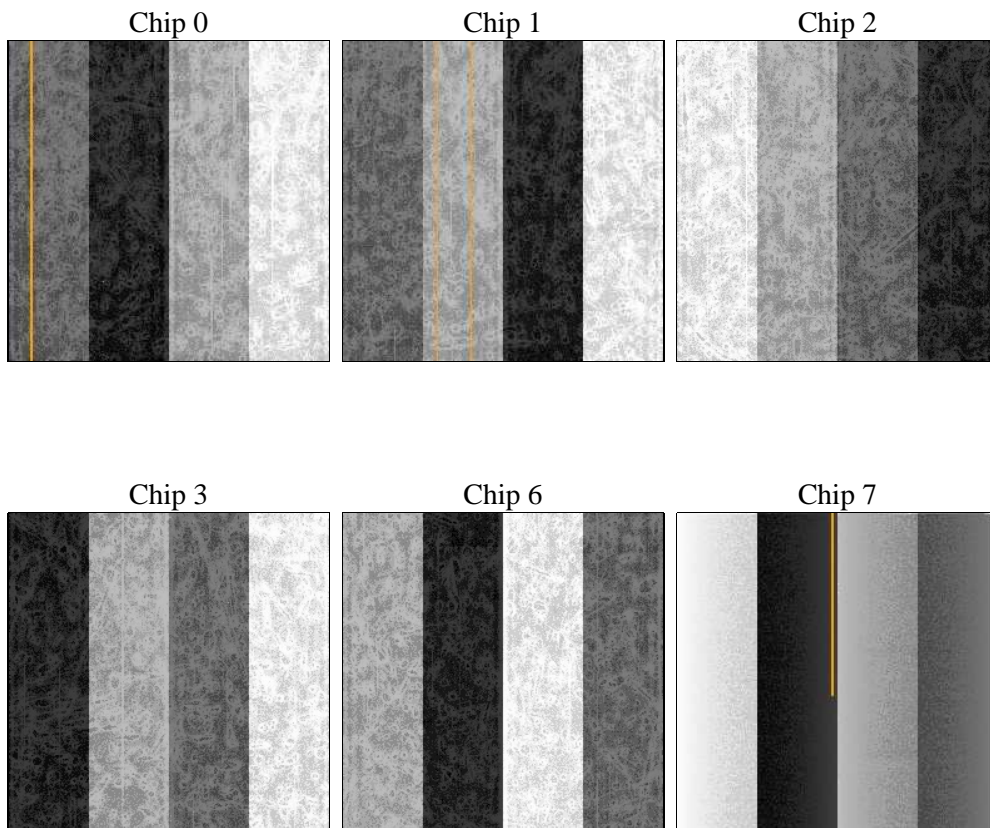
2 OBI

2.1 OBI

2.1.1 Images



2.1.2 Bias



2.1.3 Parameters

obi_num	0	Obi number	sched_exp_time	4916.509000	[s] Scheduled observation exposure time
ascdsver	8.4.3	Processing system revision	ontime	4668.7180120647	Sum of GTIs [s]
caldsver	4.4.8	 	ontime0	4668.718071878	Sum of GTIs [s]
date	2012-03-24T23:50:41	Date and time of file creation	ontime1	4668.7180220485	Sum of GTIs [s]
revision	2	Processing version of data	ontime2	4671.95901227	Sum of GTIs [s]
			ontime3	4668.7180120647	Sum of GTIs [s]
			ontime6	4665.4770817161	Sum of GTIs [s]
			ontime7	4671.9590122998	Sum of GTIs [s]
			l1events	245007	Number of level 1 events

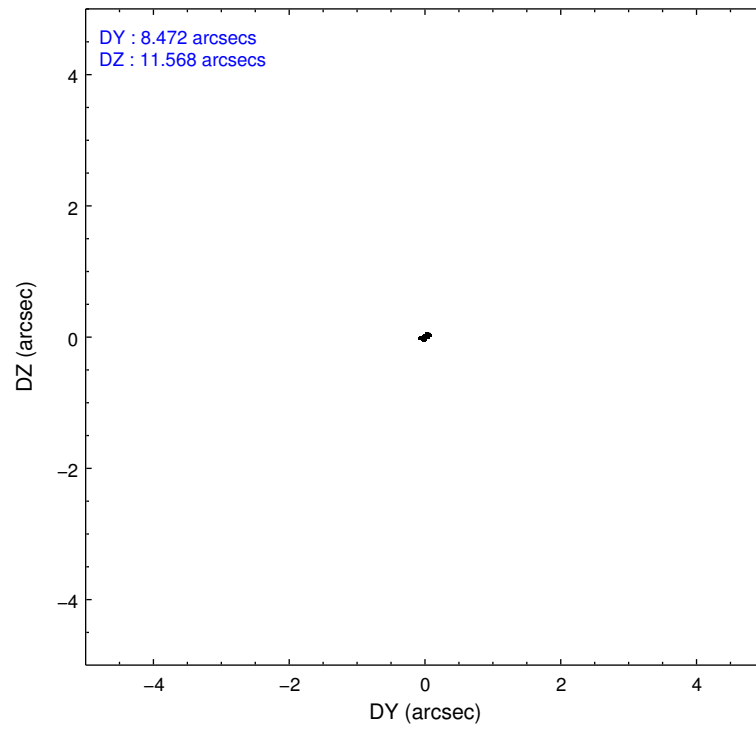
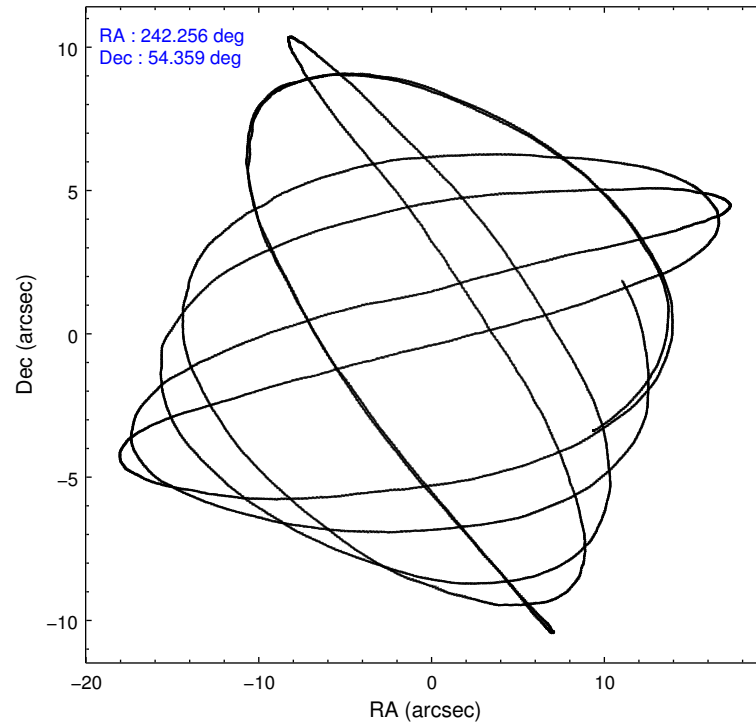
2.1.4 Events

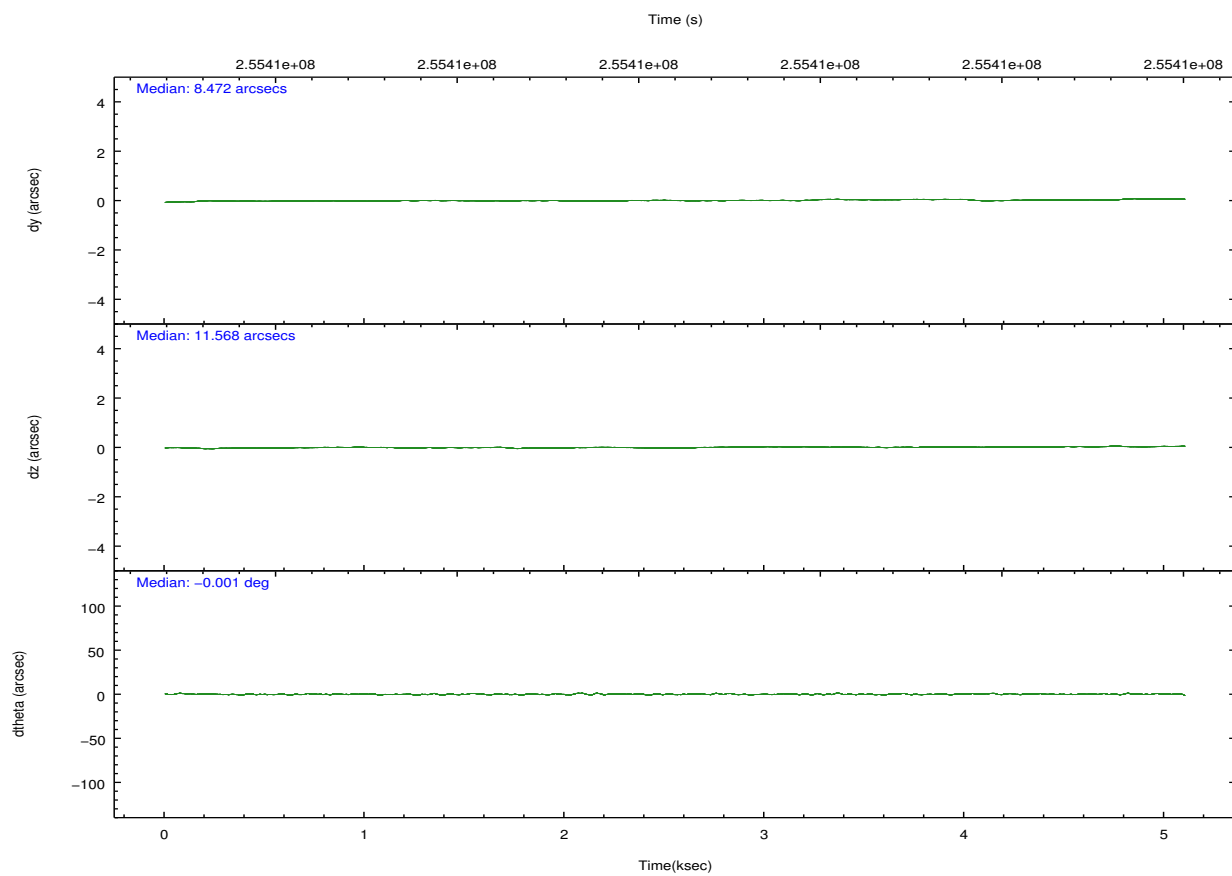
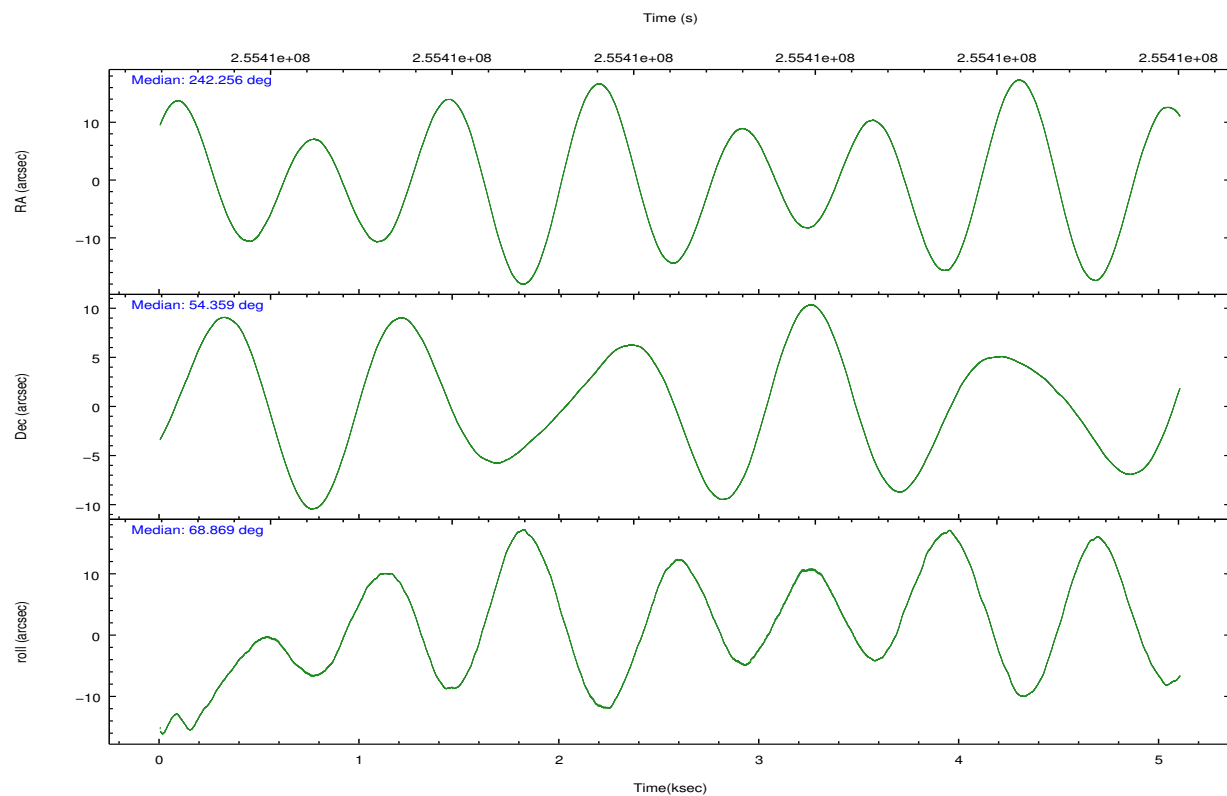
	ccd 0	ccd 1	ccd 2	ccd 3	ccd 6	ccd 7		ccd 0	ccd 1	ccd 2	ccd 3	ccd 6	ccd 7
level 1 events	36363	34930	40746	38556	40887	53525	grade 0 events	1940	1920	2078	2092	1787	2008
rejected events	31742	30089	36116	33807	36209	31338		5%	5%	5%	5%	4%	3%
rejected %	87%	86%	88%	87%	88%	58%	grade 1 events	23	21	32	23	15	60
								0%	0%	0%	0%	0%	0%
							grade 2 events	1029	1044	936	911	1048	4343
								2%	2%	2%	2%	2%	8%
							grade 3 events	452	511	463	462	477	1962
								1%	1%	1%	1%	1%	3%
							grade 4 events	417	456	442	436	398	1878
								1%	1%	1%	1%	0%	3%
							grade 5 events	1527	1689	1556	1760	1836	5116
								4%	4%	3%	4%	4%	9%
							grade 6 events	785	912	719	854	974	12006
								2%	2%	1%	2%	2%	22%
							grade 7 events	30190	28377	34520	32018	34352	26152
								83%	81%	84%	83%	84%	48%

2.2 Compared Parameters

Parameter	Planned	Actual	Parameter	Planned	Actual
Instrument	ACIS	ACIS	Obspar format version number	7	7
Detector	ACIS-012367	ACIS-012367	Obspar file type	PREDICTED	ACTUAL
Grating	NONE	NONE	Obspar update status	NONE	UPDATED
Data mode	VFAINT	VFAINT	Number of optional ACIS chips dropped	0	0
Observation mode	POINTING	POINTING	On-chip summing requested	N	N
[deg] Pointing RA	242.263381	242.2560426205895	Subarray requested	NONE	NONE
[deg] Pointing Dec	54.332480	54.35952985927465	Alternating exposures requested	N	N
[deg] Pointing Roll	68.659552	68.87420119246868	[s] Primary exposure time	0.000000	3.2
[mm] SIM focus pos	-0.782348	-0.7809083437167272			
[mm] SIM defocus	0	0.001439871863259334			
[mm] SIM translation stage pos	-233.592463	-233.5874344608287			
[mm] SIM translation stage offset	0	-0.005018542100998502			
[s] Observation start time (MET)	255405839.184000	255405462.40245			
Observation start date	2006-02-04T02:02:54	2006-02-04T01:57:42			
[s] Observation end time (MET)	255410755.184000	255410988.69021			
Observation end date	2006-02-04T03:24:50	2006-02-04T03:29:48			
Read mode	TIMED	TIMED			

2.3 Aspect



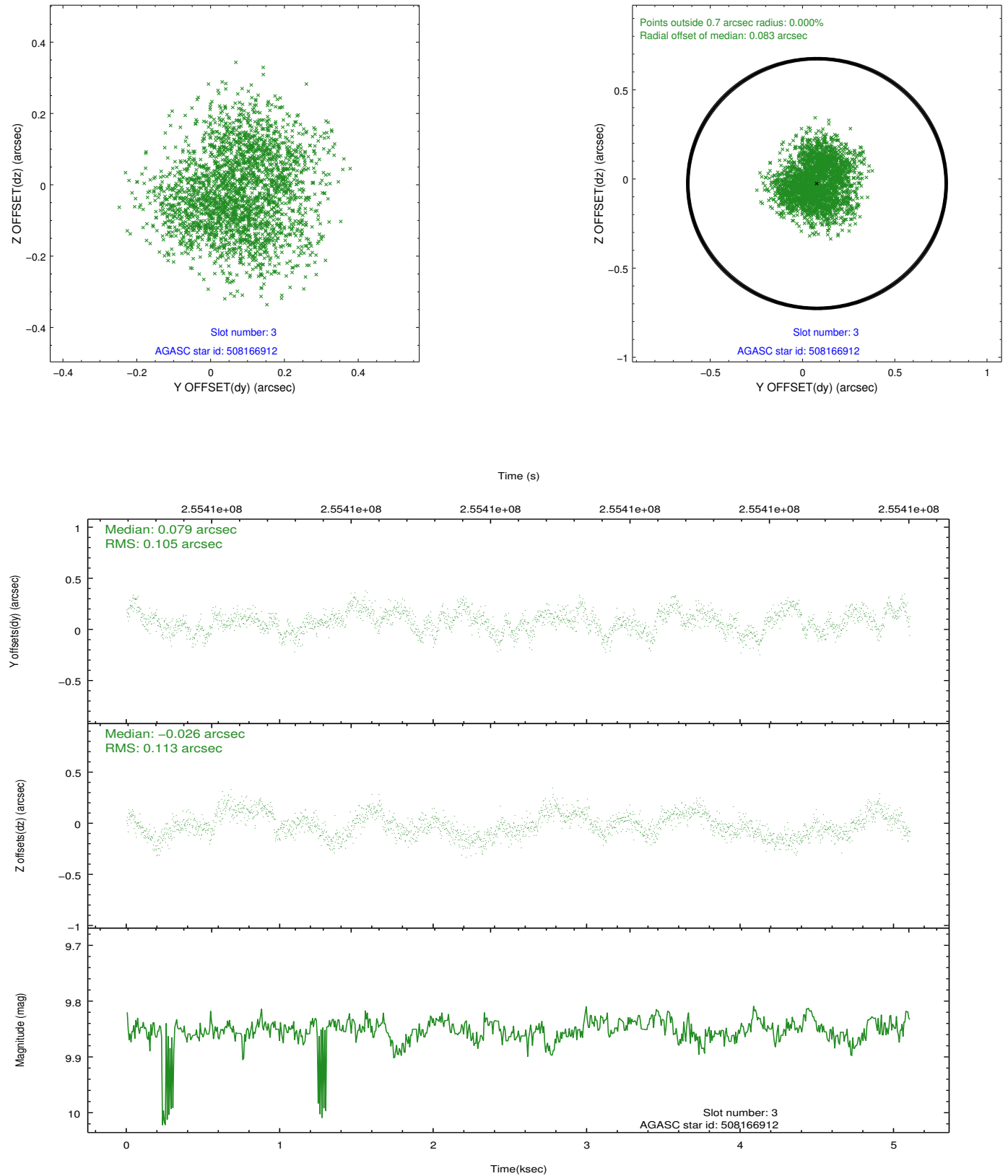


Slot Statistics

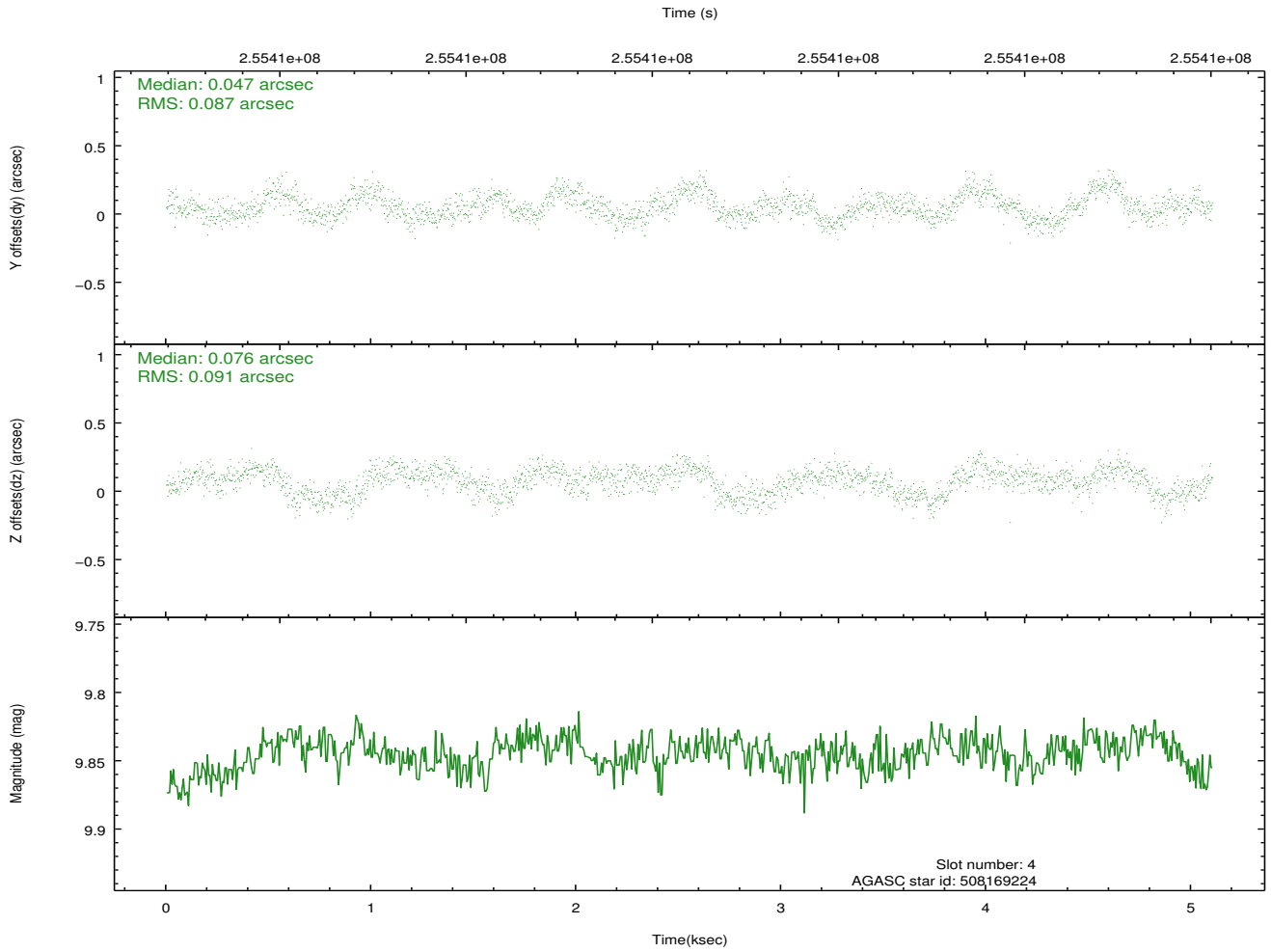
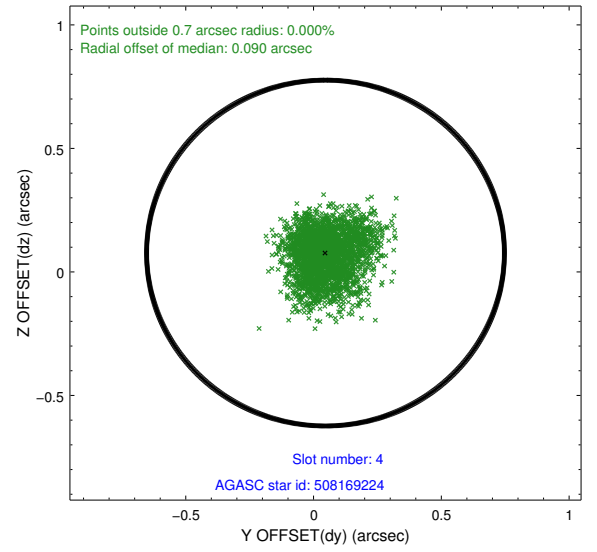
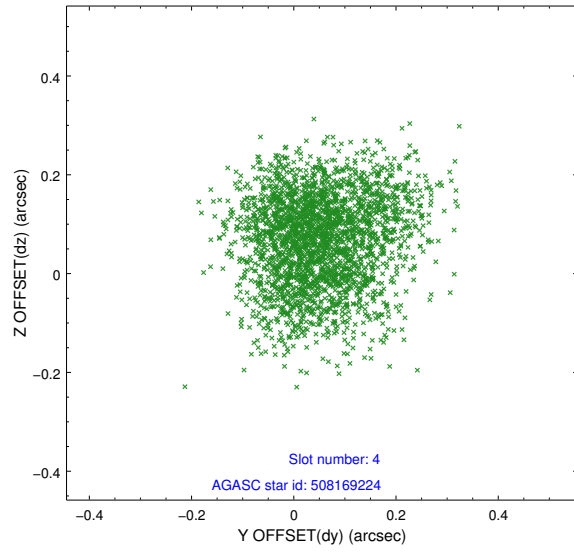
slot	status	id	mag	n_pts	med_dy	med_dz	dr1	dr2	ra	dec	mean_y	mean_z
0	FID	ACIS-I-1	7.24	1242	0.064	-0.035	0.006	0.011	0.000000	0.000000	931.20	-835.14
1	FID	ACIS-I-5	7.22	1241	-0.202	0.068	0.006	0.009	0.000000	0.000000	-1816.46	1061.93
2	FID	ACIS-I-6	7.25	1241	0.047	0.037	0.006	0.011	0.000000	0.000000	395.50	1707.70
3	GUIDE	508166912	9.85	2478	0.079	-0.026	0.168	0.256	241.478927	54.924337	1402.56	2290.58
4	GUIDE	508169224	9.85	2483	0.047	0.076	0.136	0.212	242.580277	53.826359	-1449.80	-1288.65
5	GUIDE	508170896	9.00	2482	0.003	-0.042	0.081	0.126	242.052968	54.527984	495.72	665.48
6	GUIDE	508172800	7.90	2486	-0.183	0.212	0.070	0.107	242.573753	54.657892	1327.89	-174.40
7	GUIDE	508173376	8.34	2482	0.053	-0.224	0.077	0.124	241.134254	54.422412	-541.05	2327.36

2.4 Star Slots

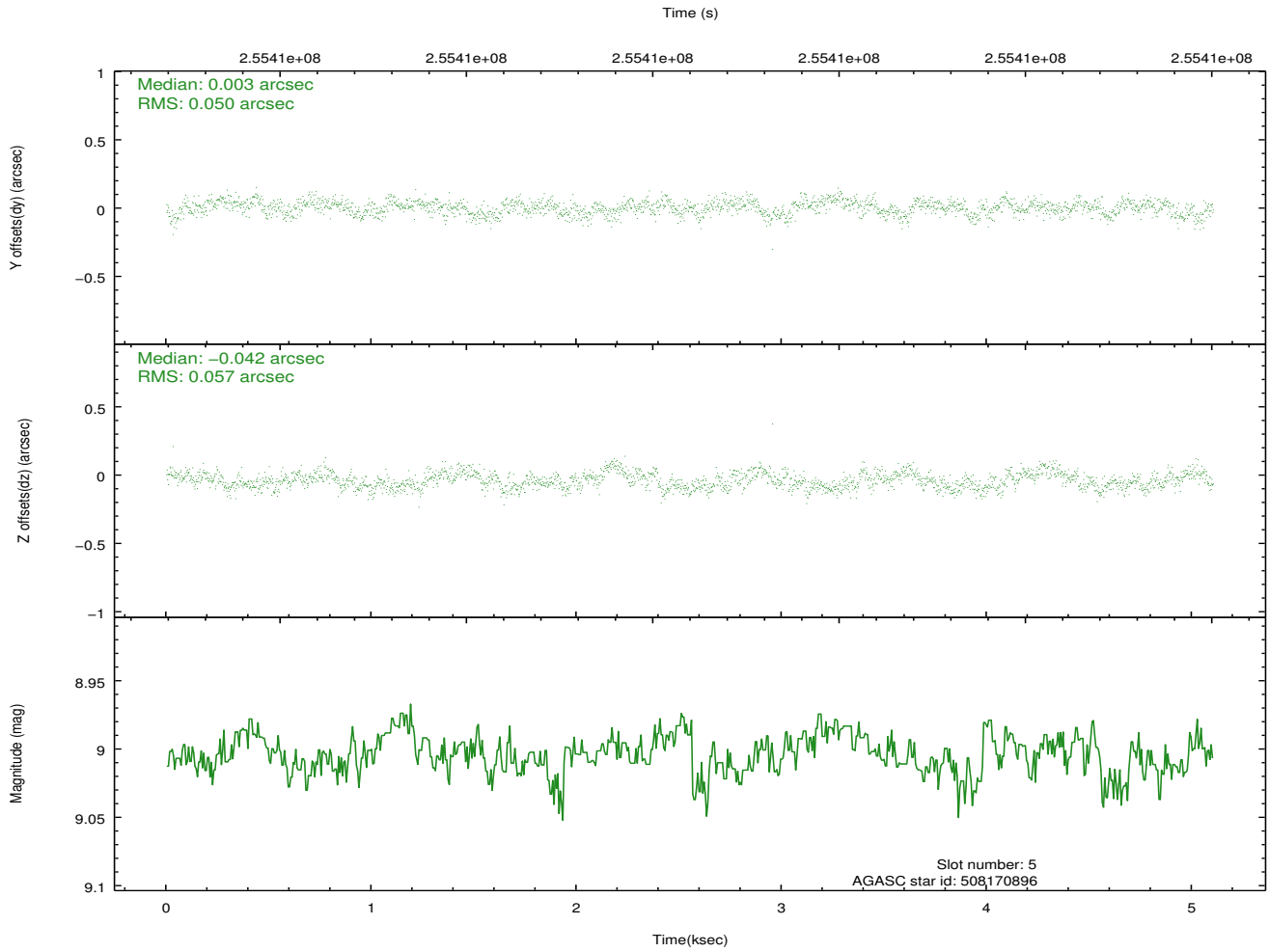
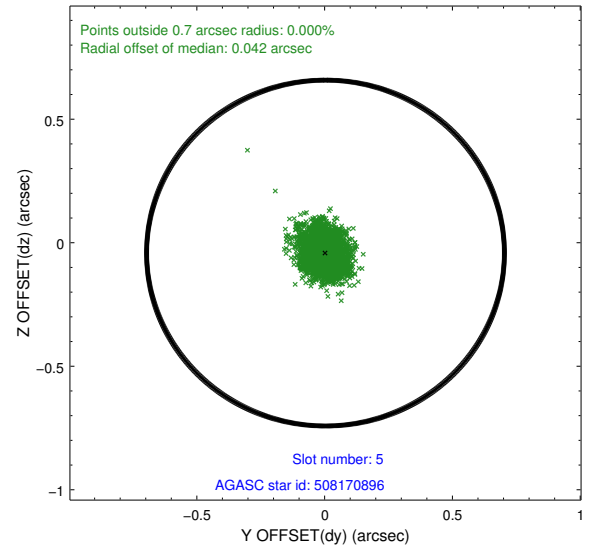
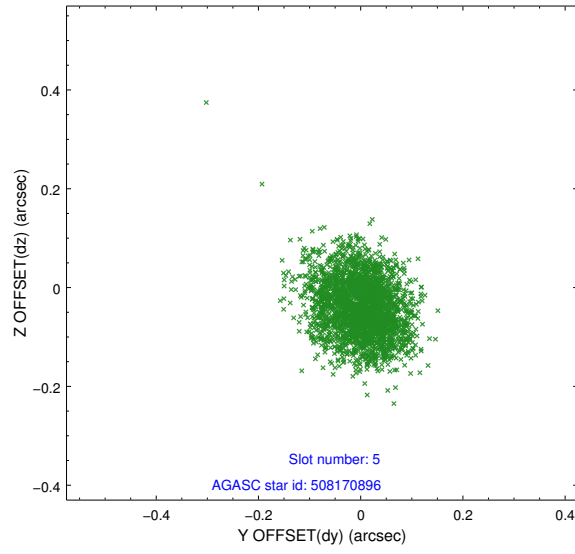
2.4.1 Slot 3



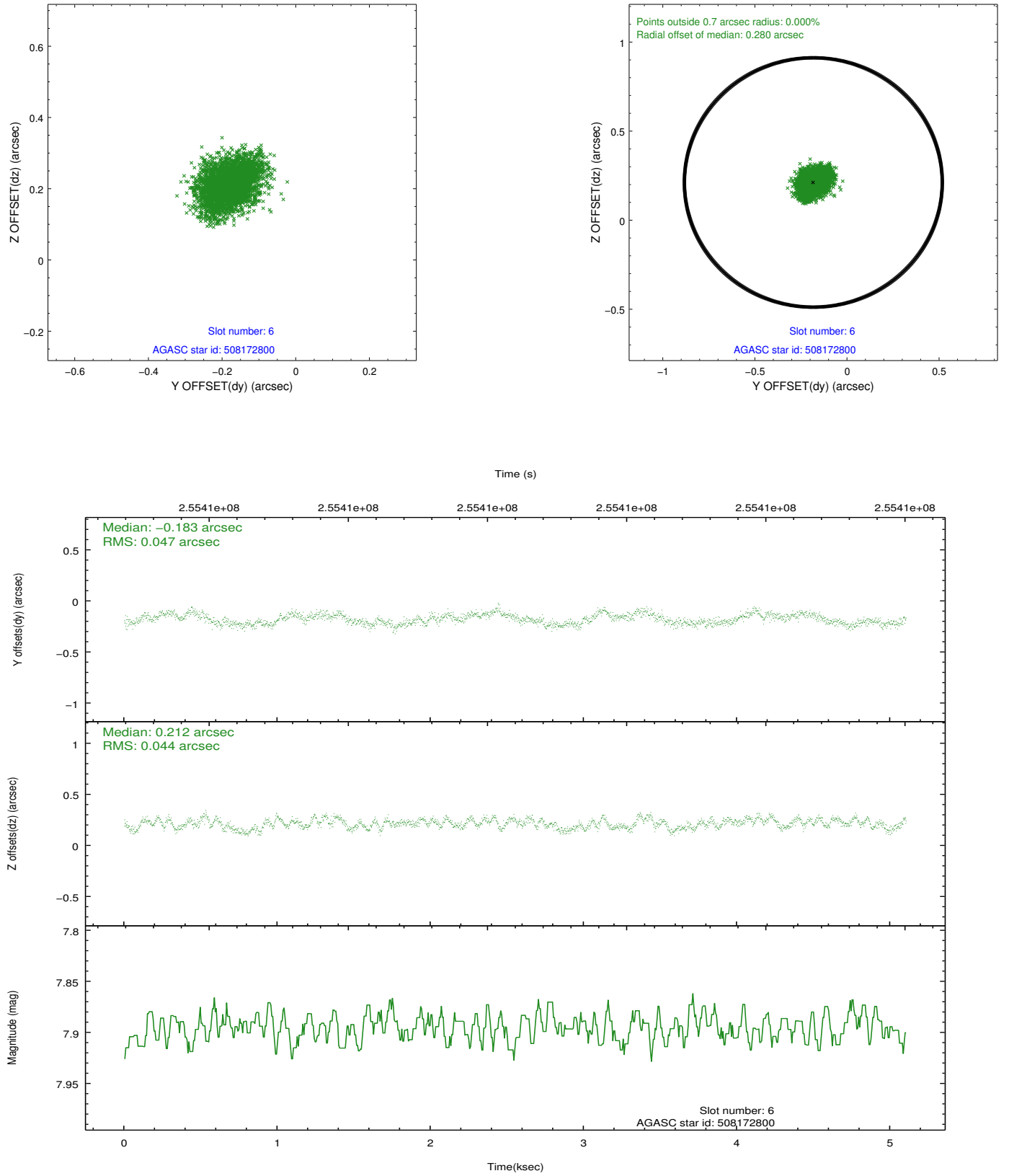
2.4.2 Slot 4



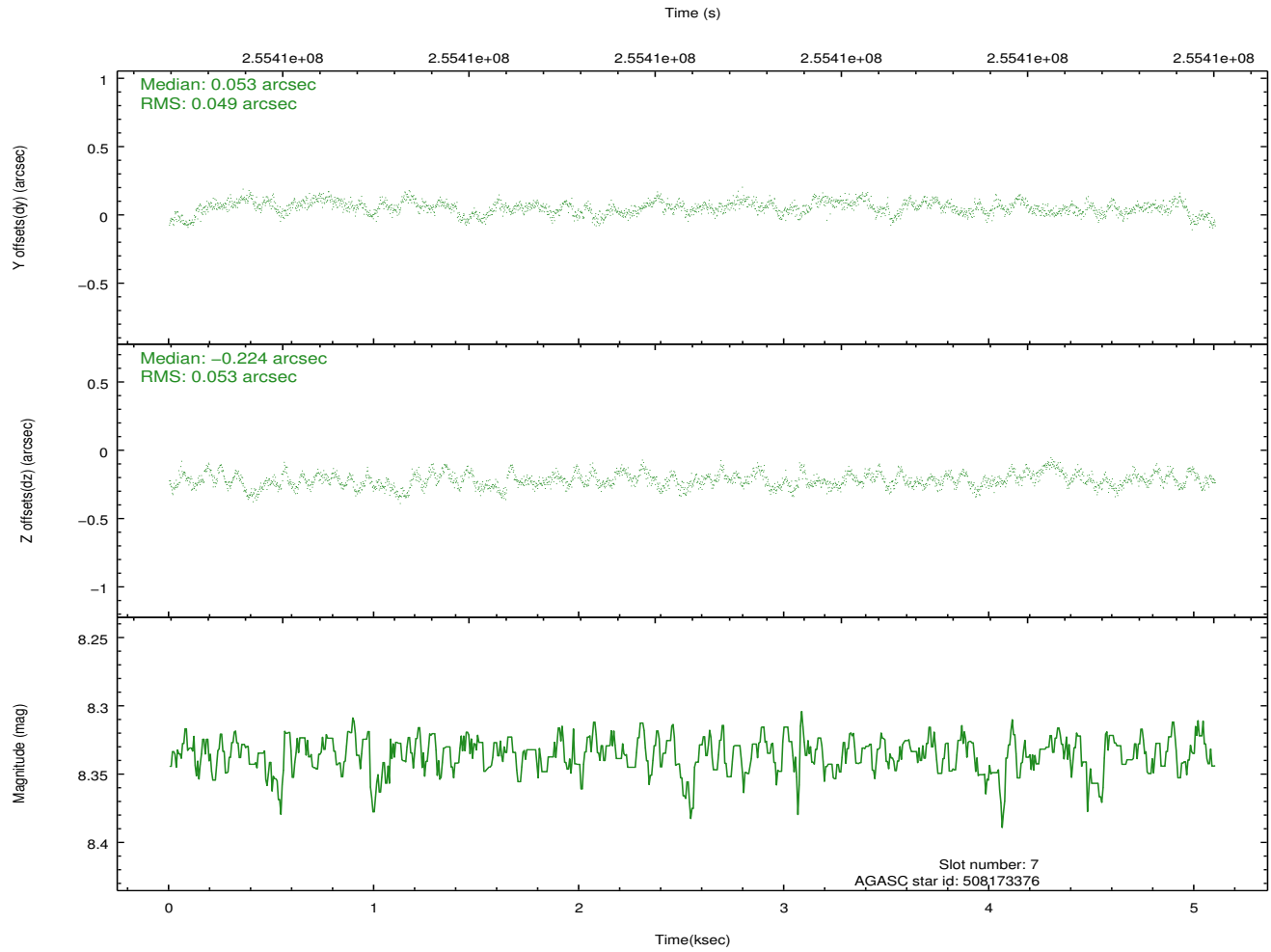
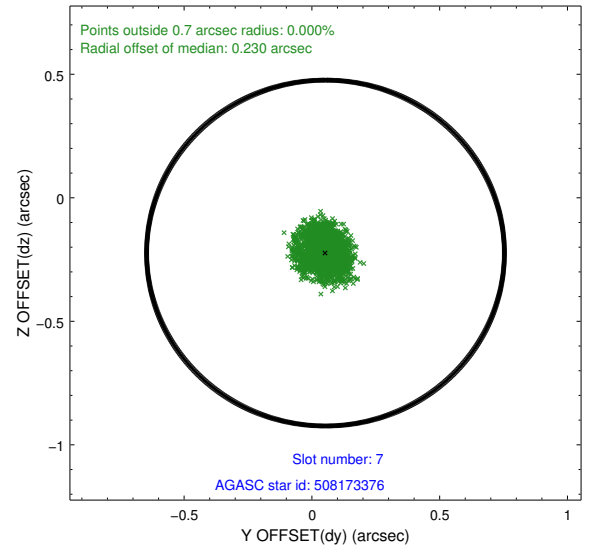
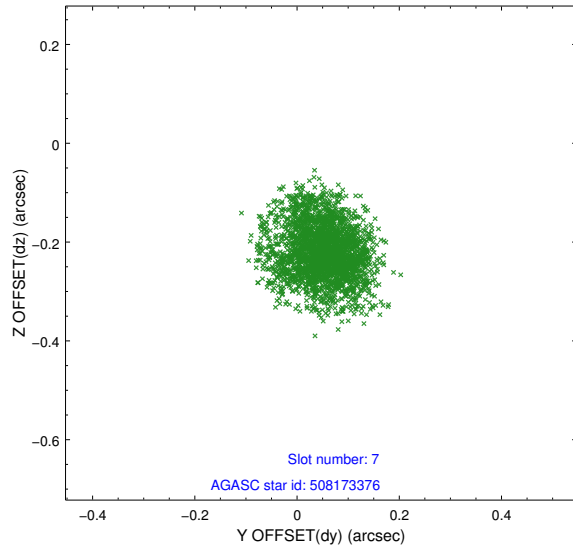
2.4.3 Slot 5



2.4.4 Slot 6

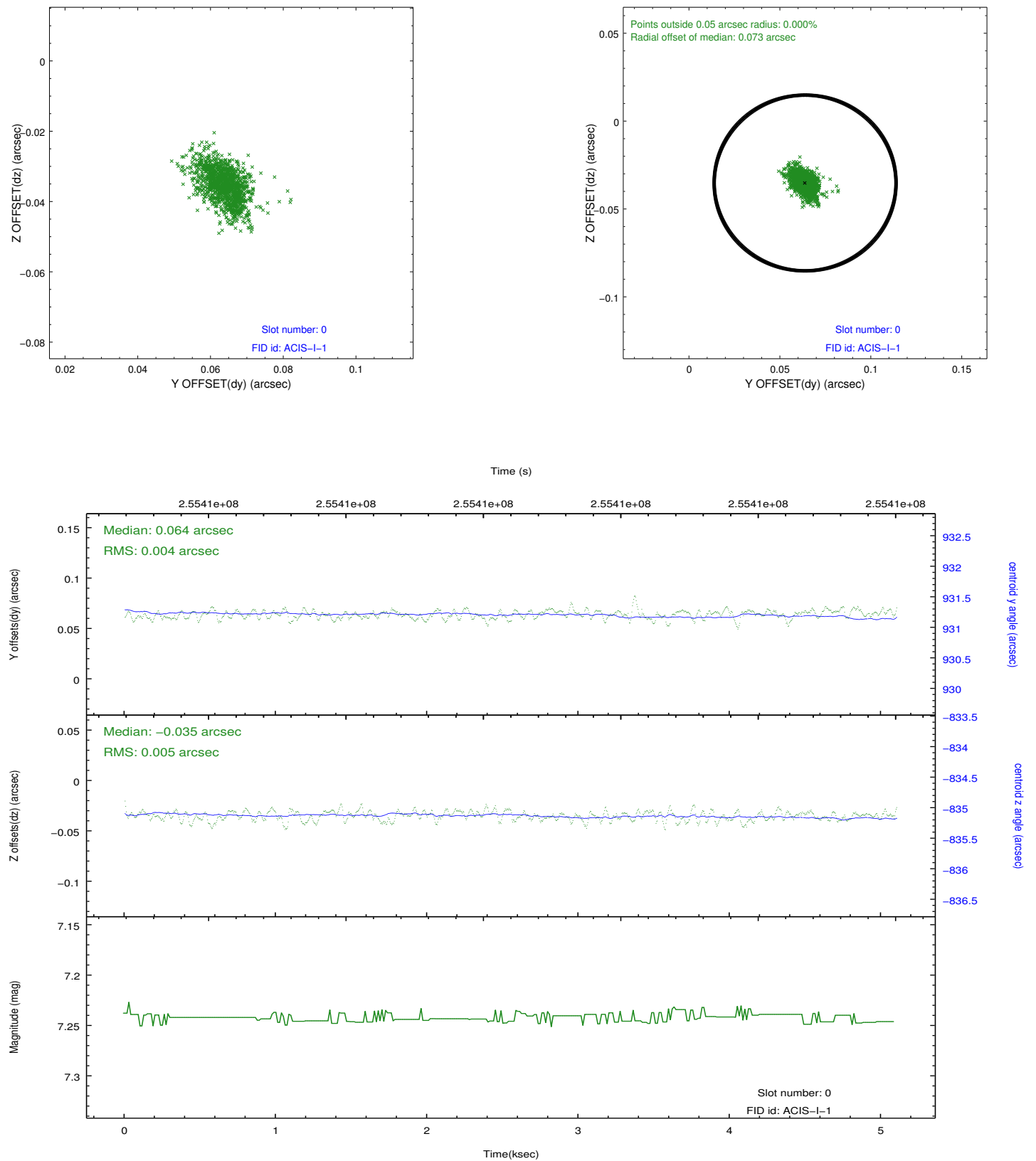


2.4.5 Slot 7

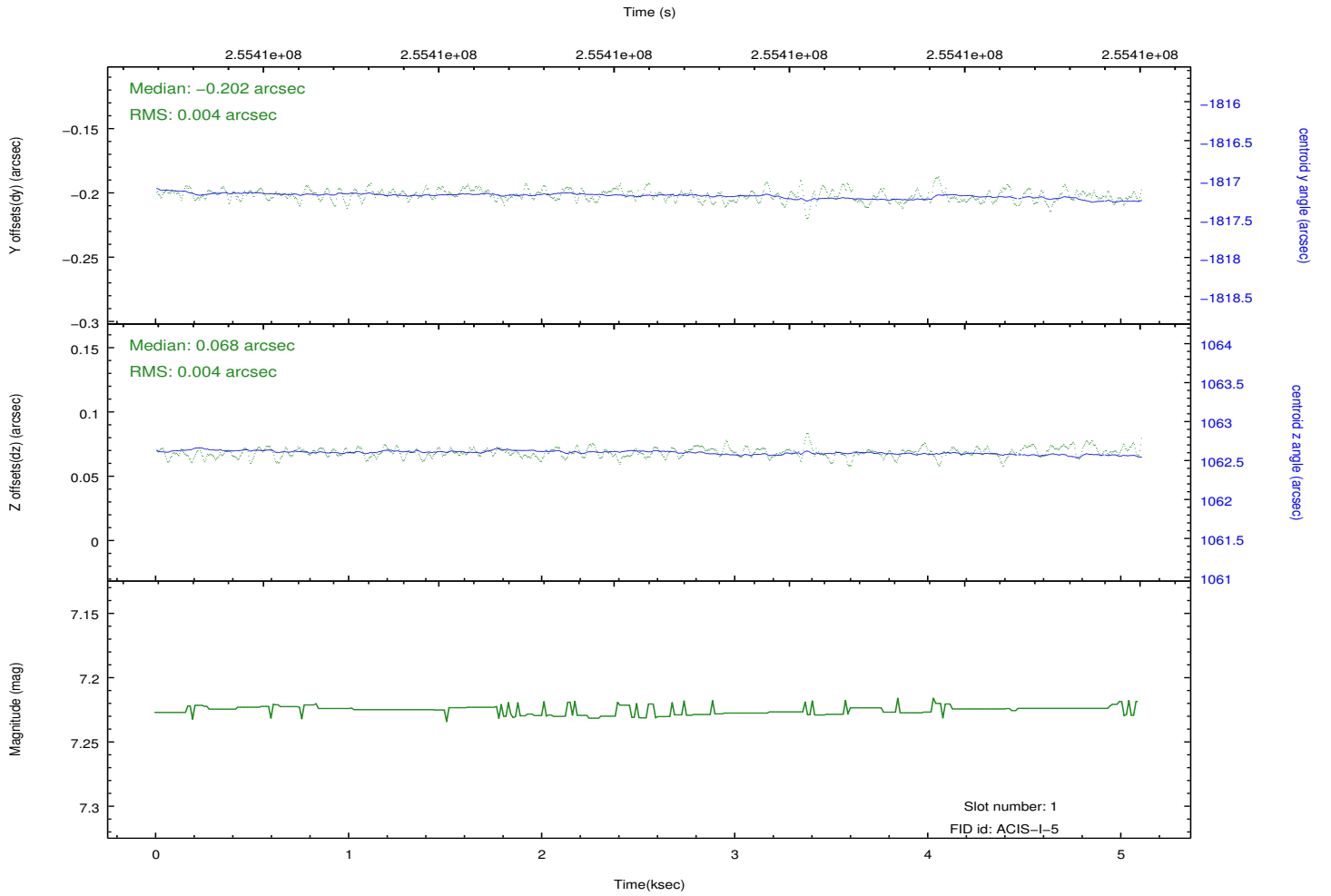
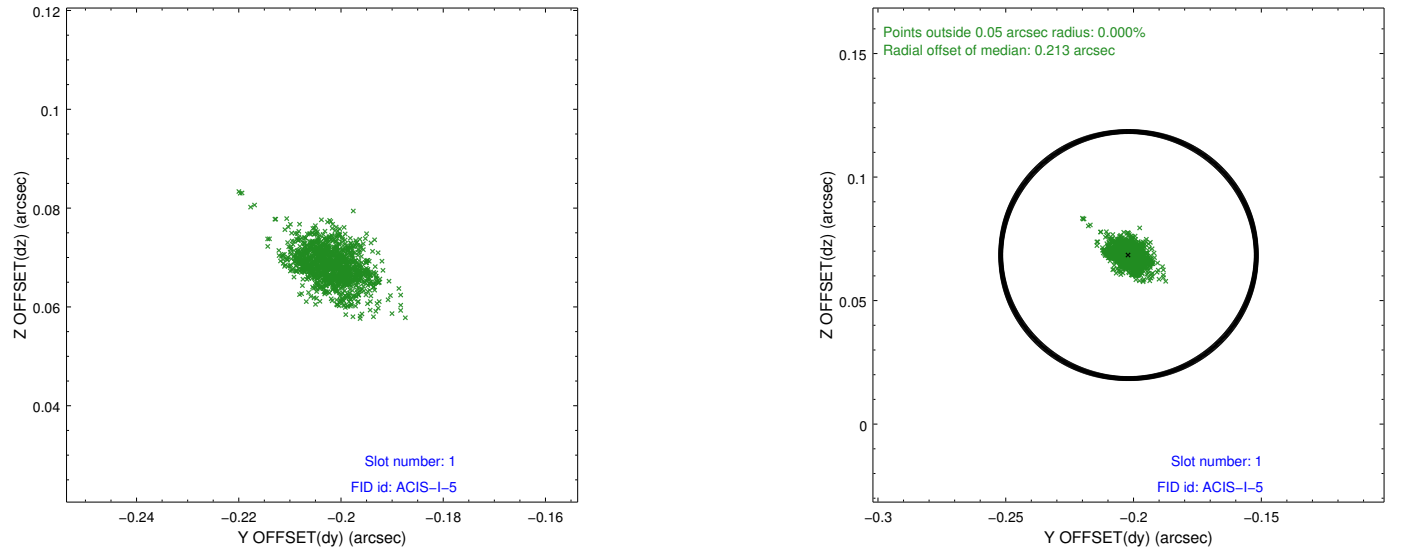


2.5 FID Slots

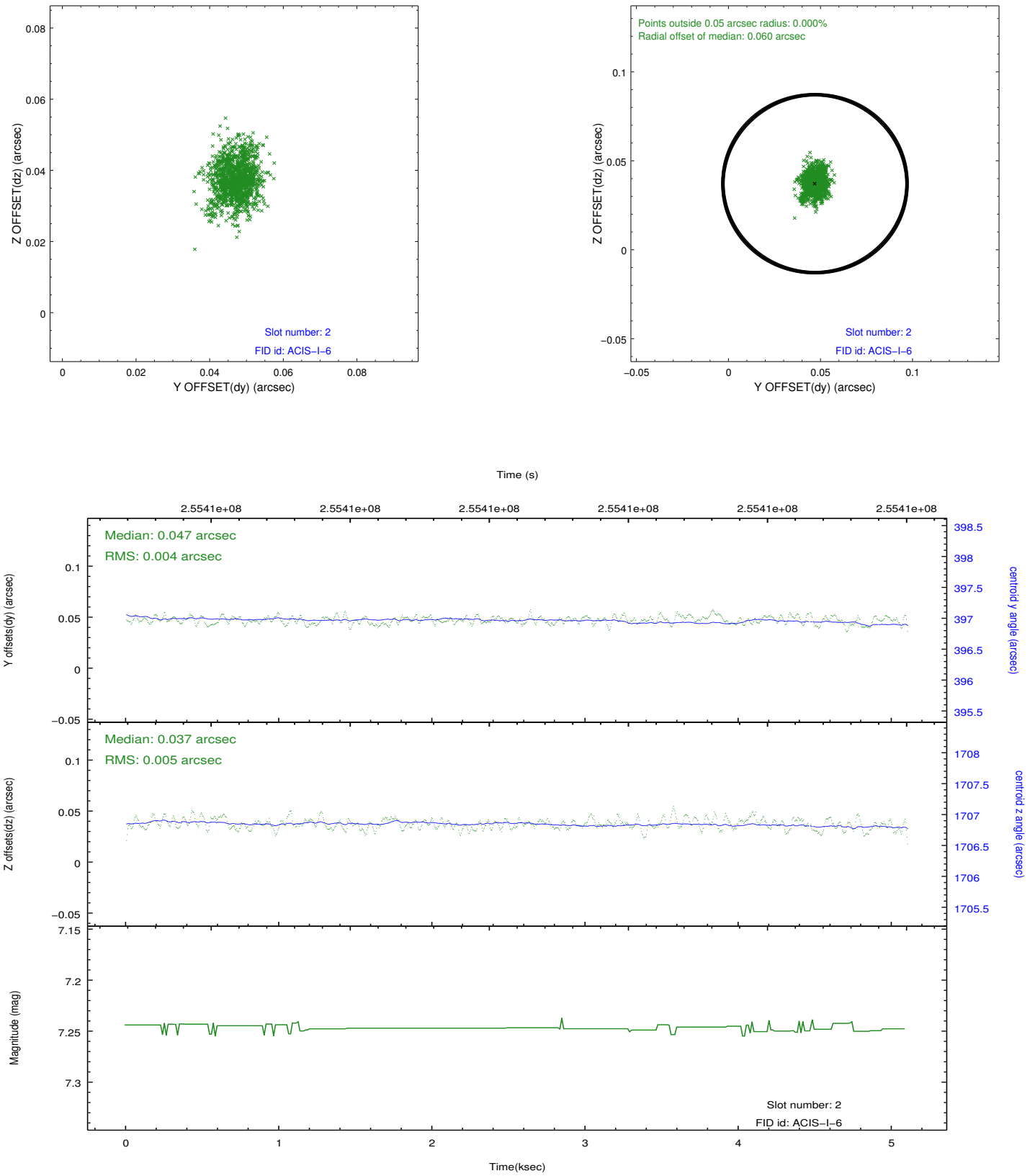
2.5.1 Slot 0



2.5.2 Slot 1



2.5.3 Slot 2



A Summary

A.1 Status

V&V Scientist	Jen Lauer
V&V Date (YYYY-MM-DD)	2012.03.26
V&V Edition	1
V&V Disposition and Status	OK
V&V Charge Time	4.66871801

A.2 Comments