

V&V Reference Report

L2 ASCDS Version : 8.4.4

Observation 58475 - L2 Version 2
Chandra X-Ray Center

L2 Processing Date : Apr 21 2012

Contents

1	Front	2
2	OBI	3
2.1	OBI	3
2.1.1	Images	3
2.1.2	Bias	3
2.1.3	Parameters	4
2.1.4	Events	4
2.2	Compared Parameters	5
2.3	Star Slots	6
2.4	FID Slots	6
A	Summary	7
A.1	Status	7
A.2	Comments	7

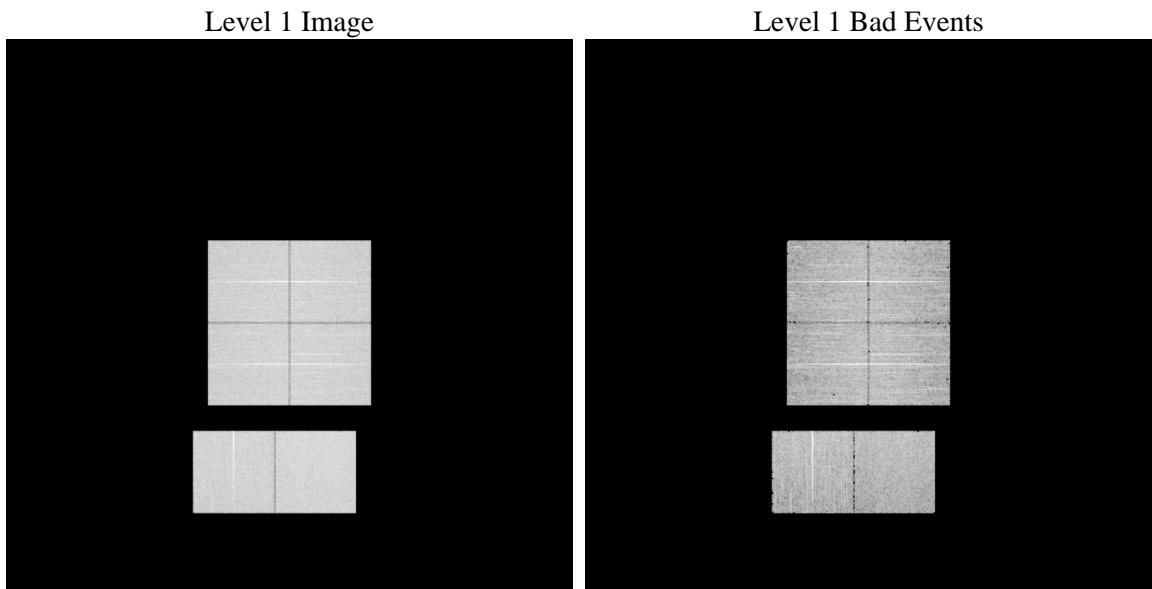
1 Front

seq_num	 	Sequence number
obs_id	58475	Observation id
title	ACIS-012367 diagnostics	Proposal title
observer	CHANDRA engineering request/realtime commanding	Principal investig
object	 	Source name
dtcycle	0	
cycle	P	events from which exps? Prim/Second/Both
ra_targ	0.0	Observer's specified target RA [deg]
dec_targ	0.0	Observer's specified target Dec [deg]
ra_nom	164.03137611105	Nominal RA [deg]
dec_nom	-23.898795052364	Nominal Dec [deg]
roll_nom	329.50744025999	Nominal Roll [deg]
revision	2	Processing version of data
ontime	6774.2399080992	Sum of GTIs [s]
livetime	6688.4604034253	Livetime [s]
ontime0	6774.1988680959	Sum of GTIs [s]
ontime1	6774.1578280926	Sum of GTIs [s]
ontime2	6774.1167880893	Sum of GTIs [s]
ontime3	6774.2809481025	Sum of GTIs [s]
ontime6	6774.075748086	Sum of GTIs [s]
ontime7	6774.2399080992	Sum of GTIs [s]
l2events	624318	Number of level 2 events

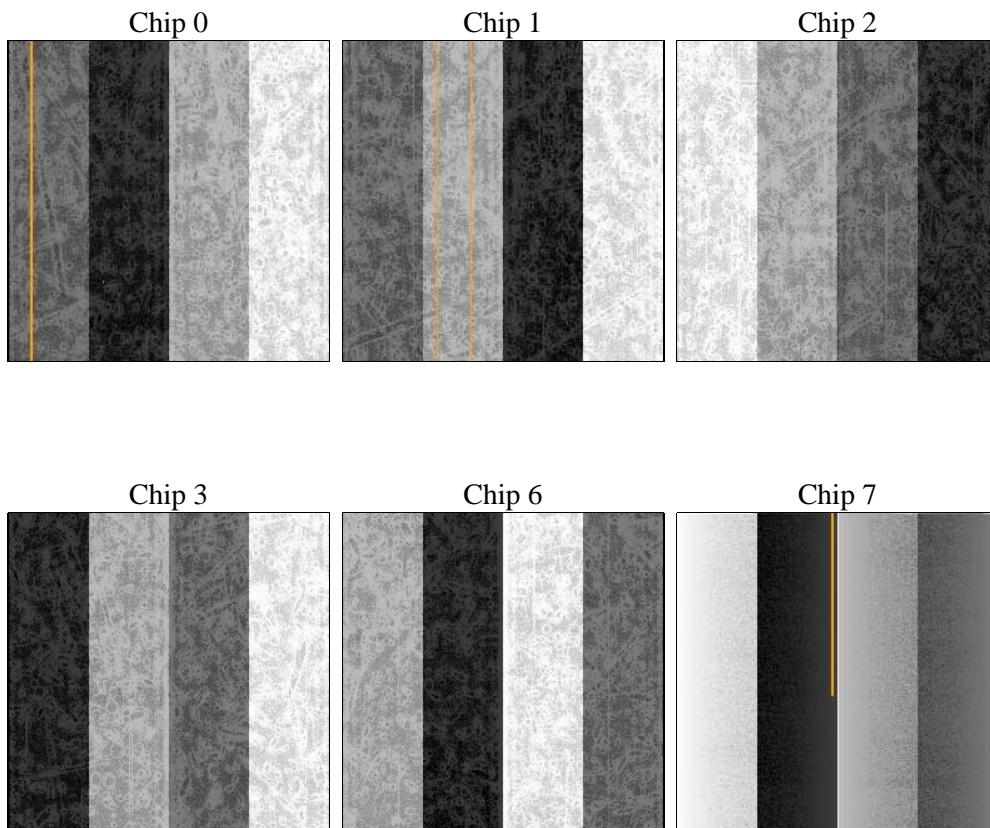
2 OBI

2.1 OBI

2.1.1 Images



2.1.2 Bias



2.1.3 Parameters

obi_num	0	Obi number	sched_exp_time	0.0	[s] Scheduled observation exposure time
ascdsver	8.4.4	Processing system revision	ontime	6774.2399080992	Sum of GTIs [s]
caldsver	4.4.9	 	ontime0	6774.1988680959	Sum of GTIs [s]
date	2012-04-21T18:53:47	Date and time of file creation	ontime1	6774.1578280926	Sum of GTIs [s]
revision	2	Processing version of data	ontime2	6774.1167880893	Sum of GTIs [s]
			ontime3	6774.2809481025	Sum of GTIs [s]
			ontime6	6774.075748086	Sum of GTIs [s]
			ontime7	6774.2399080992	Sum of GTIs [s]
			l1events	1009984	Number of level 1 events

2.1.4 Events

	ccd 0	ccd 1	ccd 2	ccd 3	ccd 6	ccd 7		ccd 0	ccd 1	ccd 2	ccd 3	ccd 6	ccd 7
level 1 events	161388	161743	164830	168657	169779	183587	grade 0 events	56618	56021	58241	58856	57928	27514
rejected events	57614	57495	60195	63370	61212	52405		35%	34%	35%	34%	34%	14%
rejected %	35%	35%	36%	37%	36%	28%	grade 1 events	398	325	448	418	352	136
								0%	0%	0%	0%	0%	0%
							grade 2 events	18524	18978	17804	17840	19204	28704
								11%	11%	10%	10%	11%	15%
							grade 3 events	6891	6880	6918	7026	6774	12535
								4%	4%	4%	4%	3%	6%
							grade 4 events	6716	6719	7047	7163	6916	12364
								4%	4%	4%	4%	4%	6%
							grade 5 events	3211	3315	2941	3494	3342	8643
								1%	2%	1%	2%	1%	4%
							grade 6 events	15475	16110	15117	14855	18199	50624
								9%	9%	9%	8%	10%	27%
							grade 7 events	53555	53395	56314	59005	57064	43067
								33%	33%	34%	34%	33%	23%

2.2 Compared Parameters

Parameter	Planned	Actual	Parameter	Planned	Actual
Instrument	ACIS	ACIS	Obspar format version number	7	7
Detector	ACIS-012367	ACIS-012367	Obspar file type	PREDICTED	ACTUAL
Grating	NONE	NONE	Obspar update status	NONE	UPDATED
Data mode	FAINT	FAINT	On-chip summing requested	N	N
Observation mode	SECONDARY	SECONDARY	Subarray requested	NONE	NONE
[deg] Pointing RA	0	164.0313761110469	Alternating exposures requested	N	N
[deg] Pointing Dec	0	-23.89879505236352	[s] Primary exposure time	3.2	3.2
[deg] Pointing Roll	0.0	329.5074402599902			
[mm] SIM focus pos	-0.782348	-0.6828225247311905			
[mm] SIM defocus	0	0.8505141146731063			
[mm] SIM translation stage pos	-233.592463	250.466033080201			
[mm] SIM translation stage offset	0	-0.01005468664627074			
[s] Observation start time (MET)	290635671.920268	290635670.89525			
Observation start date	2007-03-18T20:07:52	2007-03-18T20:07:50			
[s] Observation end time (MET)	290655511.821213	290655510.79619			
Observation end date	2007-03-19T01:38:32	2007-03-19T01:38:30			
Read mode	TIMED	TIMED			

2.3 Star Slots

2.4 FID Slots

A Summary

A.1 Status

V&V Scientist	Beth Sundheim
V&V Date (YYYY-MM-DD)	2012.04.23
V&V Edition	1
V&V Disposition and Status	OK
V&V Charge Time	6.7742399080992

A.2 Comments