

V&V Reference Report

L2 ASCDS Version : 8.4.4

Observation 58005 - L2 Version 2
Chandra X-Ray Center

L2 Processing Date : May 8 2012

Contents

1	Front	2
2	OBI	3
2.1	OBI	3
2.1.1	Images	3
2.1.2	Bias	3
2.1.3	Parameters	4
2.1.4	Events	4
2.2	Compared Parameters	5
2.3	Star Slots	6
2.4	FID Slots	6
A	Summary	7
A.1	Status	7
A.2	Comments	7

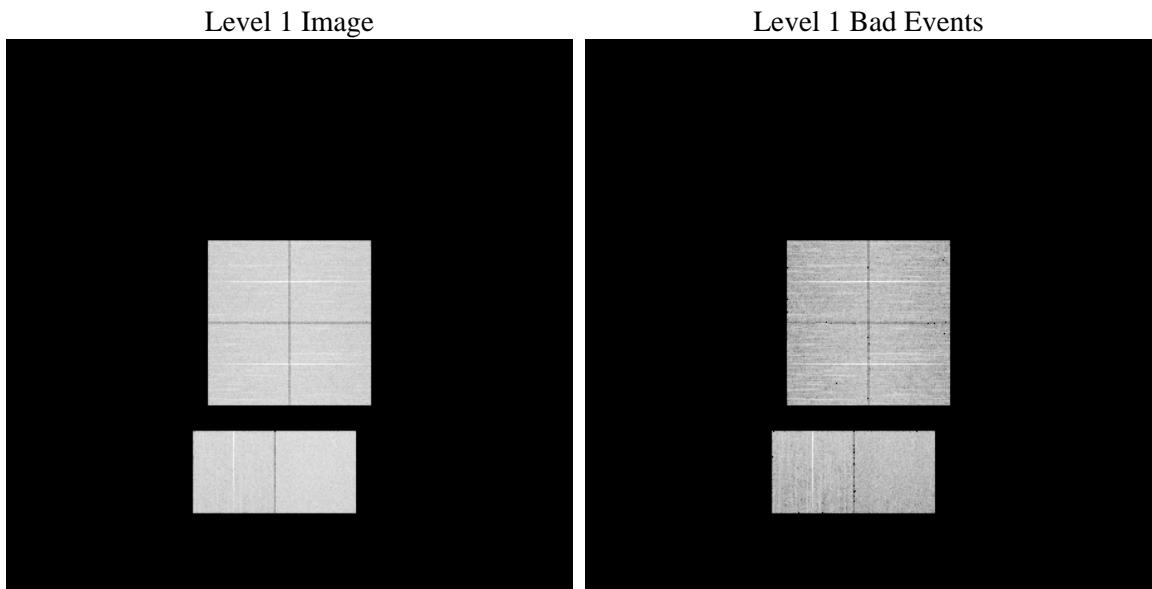
1 Front

seq_num	 	Sequence number
obs_id	58005	Observation id
title	ACIS-012367 diagnostics	Proposal title
observer	CHANDRA engineering request/realtime commanding	Principal investig
object	 	Source name
dtcycle	0	
cycle	P	events from which exps? Prim/Second/Both
ra_targ	0.0	Observer's specified target RA [deg]
dec_targ	0.0	Observer's specified target Dec [deg]
ra_nom	277.00998160387	Nominal RA [deg]
dec_nom	23.025882615285	Nominal Dec [deg]
roll_nom	30.000868783523	Nominal Roll [deg]
revision	2	Processing version of data
ontime	7516.7999720573	Sum of GTIs [s]
livetime	7421.6177247376	Livetime [s]
ontime0	7516.7999720573	Sum of GTIs [s]
ontime1	7516.7693915367	Sum of GTIs [s]
ontime2	7516.7283515334	Sum of GTIs [s]
ontime3	7516.7999720573	Sum of GTIs [s]
ontime6	7516.6873115301	Sum of GTIs [s]
ontime7	7516.7999720573	Sum of GTIs [s]
l2events	582444	Number of level 2 events

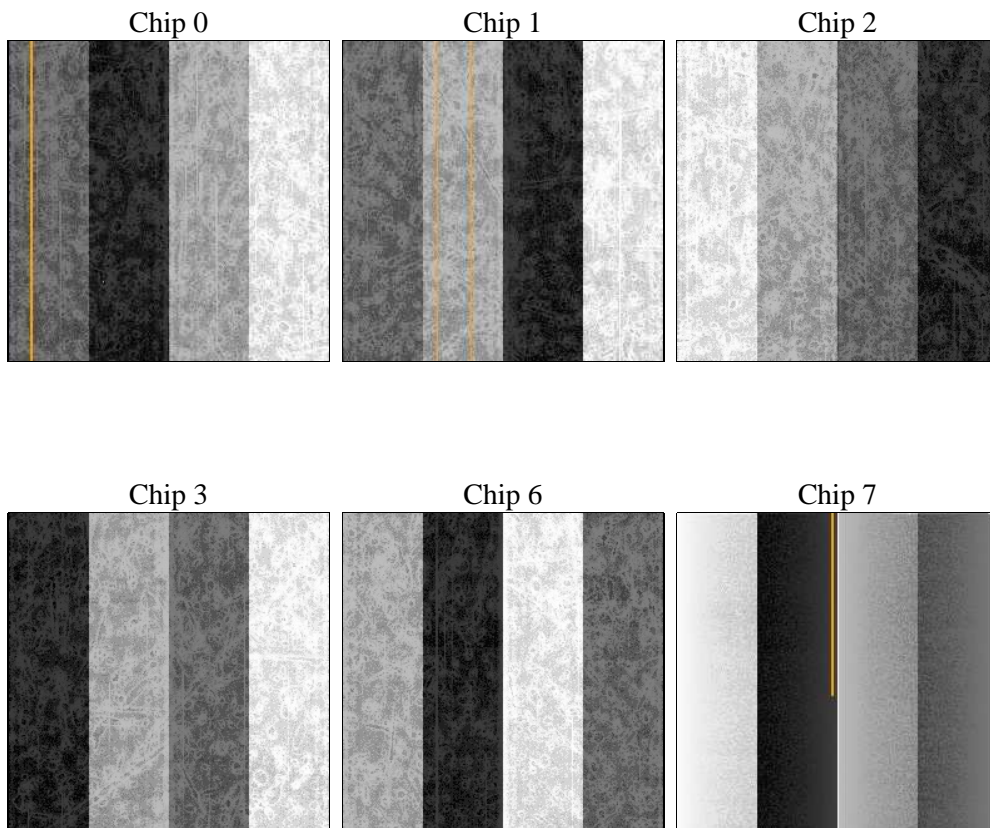
2 OBI

2.1 OBI

2.1.1 Images



2.1.2 Bias



2.1.3 Parameters

obi_num	0	Obi number	sched_exp_time	0.0	[s] Scheduled observation exposure time
ascdsver	8.4.4	Processing system revision	ontime	7516.7999720573	Sum of GTIs [s]
caldsver	4.4.9	 	ontime0	7516.7999720573	Sum of GTIs [s]
date	2012-05-08T04:57:19	Date and time of file creation	ontime1	7516.7693915367	Sum of GTIs [s]
revision	2	Processing version of data	ontime2	7516.7283515334	Sum of GTIs [s]
			ontime3	7516.7999720573	Sum of GTIs [s]
			ontime6	7516.6873115301	Sum of GTIs [s]
			ontime7	7516.7999720573	Sum of GTIs [s]
			l1events	1000113	Number of level 1 events

2.1.4 Events

	ccd 0	ccd 1	ccd 2	ccd 3	ccd 6	ccd 7		ccd 0	ccd 1	ccd 2	ccd 3	ccd 6	ccd 7
level 1 events	158187	160261	162873	164343	166672	187777	grade 0 events	51800	51414	53357	53698	53407	26290
rejected events	62008	63800	66150	67237	66308	59899		32%	32%	32%	32%	32%	14%
rejected %	39%	39%	40%	40%	39%	31%	grade 1 events	365	346	410	440	328	159
								0%	0%	0%	0%	0%	0%
							grade 2 events	17304	17889	16551	16648	17753	27821
								10%	11%	10%	10%	10%	14%
							grade 3 events	6386	6214	6527	6604	6521	12335
								4%	3%	4%	4%	3%	6%
							grade 4 events	6369	6412	6521	6608	6462	12063
								4%	4%	4%	4%	3%	6%
							grade 5 events	3520	3682	3411	3992	3855	9826
								2%	2%	2%	2%	2%	5%
							grade 6 events	14675	14895	14112	13918	16576	49838
								9%	9%	8%	8%	9%	26%
							grade 7 events	57768	59409	61984	62435	61770	49445
								36%	37%	38%	37%	37%	26%

2.2 Compared Parameters

Parameter	Planned	Actual
Instrument	ACIS	ACIS
Detector	ACIS-012367	ACIS-012367
Grating	NONE	NONE
Data mode	FAINT	FAINT
Observation mode	SECONDARY	SECONDARY
[deg] Pointing RA	0	277.0099816038738
[deg] Pointing Dec	0	23.02588261528525
[deg] Pointing Roll	0.0	30.00086878352304
[mm] SIM focus pos	-0.782348	-0.7809083437167272
[mm] SIM defocus	0	0.7524282956875696
[mm] SIM translation stage pos	-233.592463	250.466033080201
[mm] SIM translation stage offset	0	-0.01005468664627074
[s] Observation start time (MET)	317128028.192642	317128027.16765
Observation start date	2008-01-19T11:07:08	2008-01-19T11:07:07
[s] Observation end time (MET)	317161410.394258	317161409.36927
Observation end date	2008-01-19T20:23:30	2008-01-19T20:23:29
Read mode	TIMED	TIMED

Parameter	Planned	Actual
Obspar format version number	7	7
Obspar file type	PREDICTED	ACTUAL
Obspar update status	NONE	UPDATED
On-chip summing requested	N	N
Subarray requested	NONE	NONE
Alternating exposures requested	N	N
[s] Primary exposure time	3.2	3.2

2.3 Star Slots

2.4 FID Slots

A Summary

A.1 Status

V&V Scientist	Jen Lauer
V&V Date (YYYY-MM-DD)	2012.05.10
V&V Edition	1
V&V Disposition and Status	OK
V&V Charge Time	7.5167999720573

A.2 Comments