

V&V Reference Report

L2 ASCDS Version : 8.4.4

Observation 57845 - L2 Version 2
Chandra X-Ray Center

L2 Processing Date : May 13 2012

Contents

1	Front	2
2	OBI	3
2.1	OBI	3
2.1.1	Images	3
2.1.2	Bias	3
2.1.3	Parameters	4
2.1.4	Events	4
2.2	Compared Parameters	5
2.3	Star Slots	6
2.4	FID Slots	6
A	Summary	7
A.1	Status	7
A.2	Comments	7

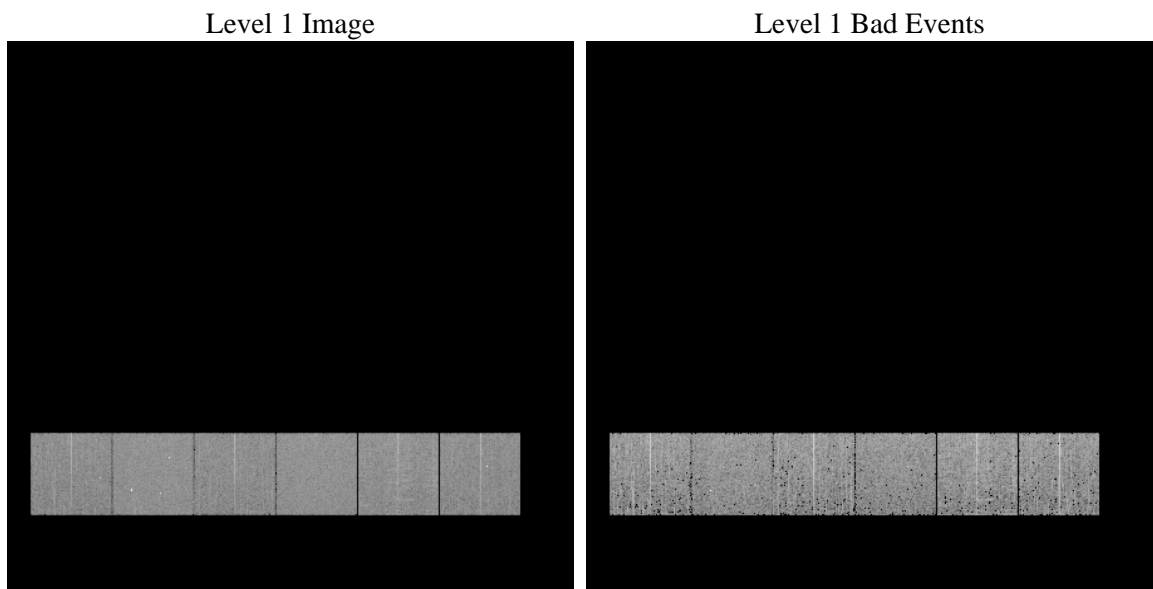
1 Front

seq_num	 	Sequence number
obs_id	57845	Observation id
title	ACIS-456789 diagnostics	Proposal title
observer	CHANDRA engineering request/realtime commanding	Principal investig
object	 	Source name
dtcycle	0	
cycle	P	events from which exps? Prim/Second/Both
ra_targ	0.0	Observer's specified target RA [deg]
dec_targ	0.0	Observer's specified target Dec [deg]
ra_nom	223.97387878235	Nominal RA [deg]
dec_nom	10.599995157841	Nominal Dec [deg]
roll_nom	156.98390241323	Nominal Roll [deg]
revision	2	Processing version of data
ontime	3292.799987793	Sum of GTIs [s]
livetime	3251.1045716614	Livetime [s]
ontime4	3292.799987793	Sum of GTIs [s]
ontime5	3292.799987793	Sum of GTIs [s]
ontime6	3292.799987793	Sum of GTIs [s]
ontime7	3292.799987793	Sum of GTIs [s]
ontime8	3292.799987793	Sum of GTIs [s]
ontime9	3292.799987793	Sum of GTIs [s]
l2events	255654	Number of level 2 events

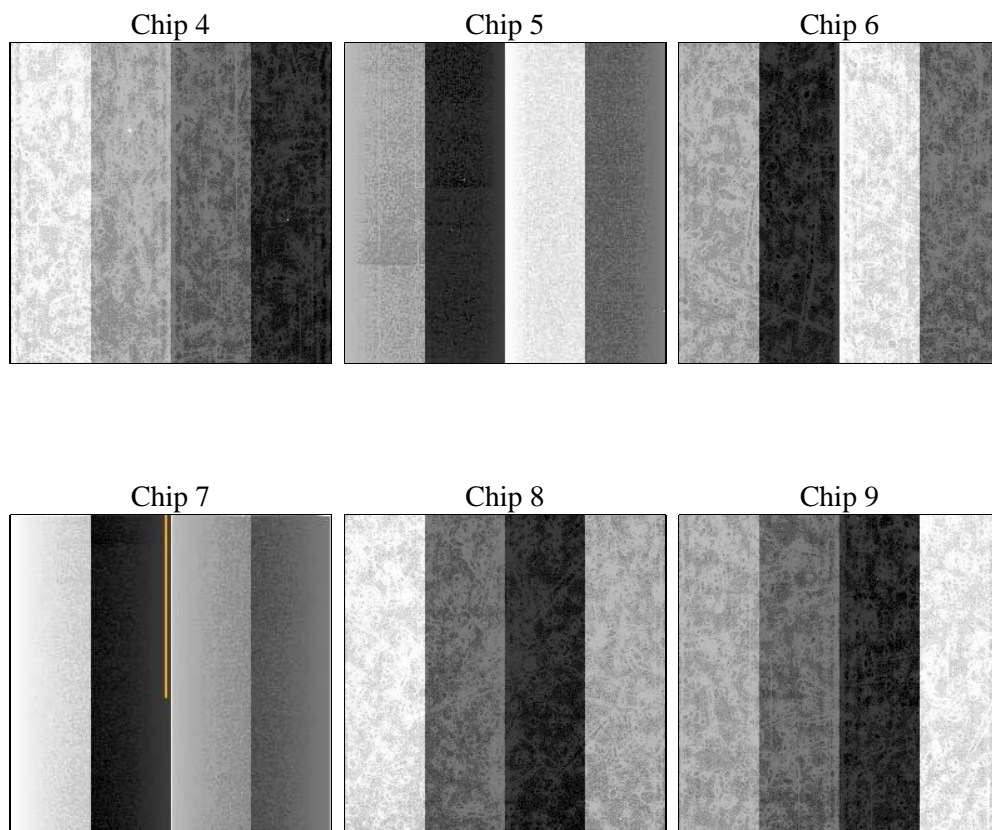
2 OBI

2.1 OBI

2.1.1 Images



2.1.2 Bias



2.1.3 Parameters

obi_num	0	Obi number	sched_exp_time	0.0	[s] Scheduled observation exposure time
ascdsver	8.4.4	Processing system revision	ontime	3292.799987793	Sum of GTIs [s]
caldsver	4.4.9	 	ontime4	3292.799987793	Sum of GTIs [s]
date	2012-05-13T13:56:48	Date and time of file creation	ontime5	3292.799987793	Sum of GTIs [s]
revision	2	Processing version of data	ontime6	3292.799987793	Sum of GTIs [s]
			ontime7	3292.799987793	Sum of GTIs [s]
			ontime8	3292.799987793	Sum of GTIs [s]
			ontime9	3292.799987793	Sum of GTIs [s]
			l1events	453078	Number of level 1 events

2.1.4 Events

	ccd 4	ccd 5	ccd 6	ccd 7	ccd 8	ccd 9		ccd 4	ccd 5	ccd 6	ccd 7	ccd 8	ccd 9
level 1 events	69676	81039	71485	80150	79384	71344	grade 0 events	22499	9321	21984	11093	24027	21899
rejected events	30371	27533	29703	25790	32495	29370		32%	11%	30%	13%	30%	30%
rejected %	43%	33%	41%	32%	40%	41%	grade 1 events	201	82	146	61	156	150
								0%	0%	0%	0%	0%	0%
							grade 2 events	6223	19262	7461	11867	8414	8046
								8%	23%	10%	14%	10%	11%
							grade 3 events	2709	2615	2747	5210	3364	2751
								3%	3%	3%	6%	4%	3%
							grade 4 events	2681	2430	2735	5038	3222	2852
								3%	2%	3%	6%	4%	3%
							grade 5 events	1646	3744	1629	4226	2151	1956
								2%	4%	2%	5%	2%	2%
							grade 6 events	5237	19927	6897	21202	7912	6482
								7%	24%	9%	26%	9%	9%
							grade 7 events	28480	23658	27886	21453	30138	27208
								40%	29%	39%	26%	37%	38%

2.2 Compared Parameters

Parameter	Planned	Actual	Parameter	Planned	Actual
Instrument	ACIS	ACIS	Obspar format version number	7	7
Detector	ACIS-456789	ACIS-456789	Obspar file type	PREDICTED	ACTUAL
Grating	NONE	NONE	Obspar update status	NONE	UPDATED
Data mode	FAINT	FAINT	On-chip summing requested	N	N
Observation mode	SECONDARY	SECONDARY	Subarray requested	NONE	NONE
[deg] Pointing RA	0	223.9738787823498	Alternating exposures requested	N	N
[deg] Pointing Dec	0	10.59999515784052	[s] Primary exposure time	3.2	3.2
[deg] Pointing Roll	0.0	156.9839024132257			
[mm] SIM focus pos	-1.429586	-0.6828225247311905			
[mm] SIM defocus	0.1037507710433287	0.8505141146731063			
[mm] SIM translation stage pos	250.455976	250.466033080201			
[mm] SIM translation stage offset	0	-0.01005468664627074			
[s] Observation start time (MET)	325557571.202356	325557570.17735			
Observation start date	2008-04-26T00:39:31	2008-04-26T00:39:30			
[s] Observation end time (MET)	325568760.102902	325568759.0779			
Observation end date	2008-04-26T03:46:00	2008-04-26T03:45:59			
Read mode	TIMED	TIMED			

2.3 Star Slots

2.4 FID Slots

A Summary

A.1 Status

V&V Scientist	Beth Sundheim
V&V Date (YYYY-MM-DD)	2012.05.15
V&V Edition	1
V&V Disposition and Status	OK
V&V Charge Time	3.292799987793

A.2 Comments