

V&V Reference Report

L2 ASCDS Version : 8.4.4

Observation 57635 - L2 Version 2
Chandra X-Ray Center

L2 Processing Date : May 19 2012

Contents

1	Front	2
2	OBI	3
2.1	OBI	3
2.1.1	Images	3
2.1.2	Bias	3
2.1.3	Parameters	4
2.1.4	Events	4
2.2	Compared Parameters	5
2.3	Star Slots	6
2.4	FID Slots	6
A	Summary	7
A.1	Status	7
A.2	Comments	7

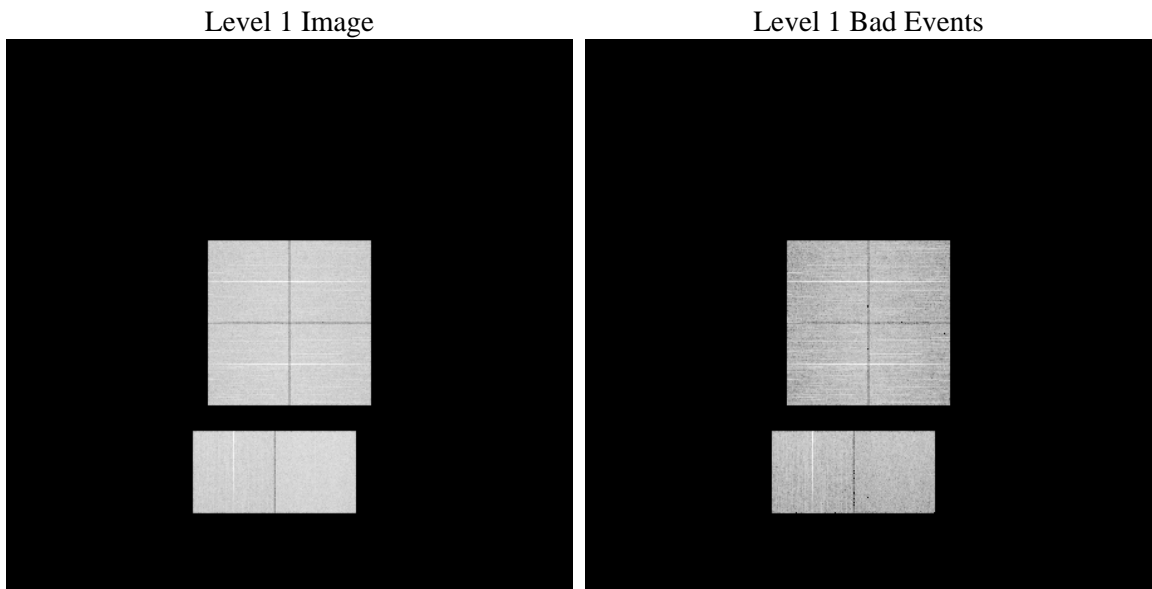
1 Front

seq_num	 	Sequence number
obs_id	57635	Observation id
title	ACIS-012367 diagnostics	Proposal title
observer	CHANDRA engineering request/realtime commanding	Principal investig
object	 	Source name
dtcycle	0	
cycle	P	events from which exps? Prim/Second/Both
ra_targ	0.0	Observer's specified target RA [deg]
dec_targ	0.0	Observer's specified target Dec [deg]
ra_nom	351.00941795751	Nominal RA [deg]
dec_nom	-29.970587429533	Nominal Dec [deg]
roll_nom	40.553569260906	Nominal Roll [deg]
revision	2	Processing version of data
ontime	8271.999969244	Sum of GTIs [s]
livetime	8167.254924833	Livetime [s]
ontime0	8271.999969244	Sum of GTIs [s]
ontime1	8271.999969244	Sum of GTIs [s]
ontime2	8271.999969244	Sum of GTIs [s]
ontime3	8271.999969244	Sum of GTIs [s]
ontime6	8271.999969244	Sum of GTIs [s]
ontime7	8271.999969244	Sum of GTIs [s]
l2events	562685	Number of level 2 events

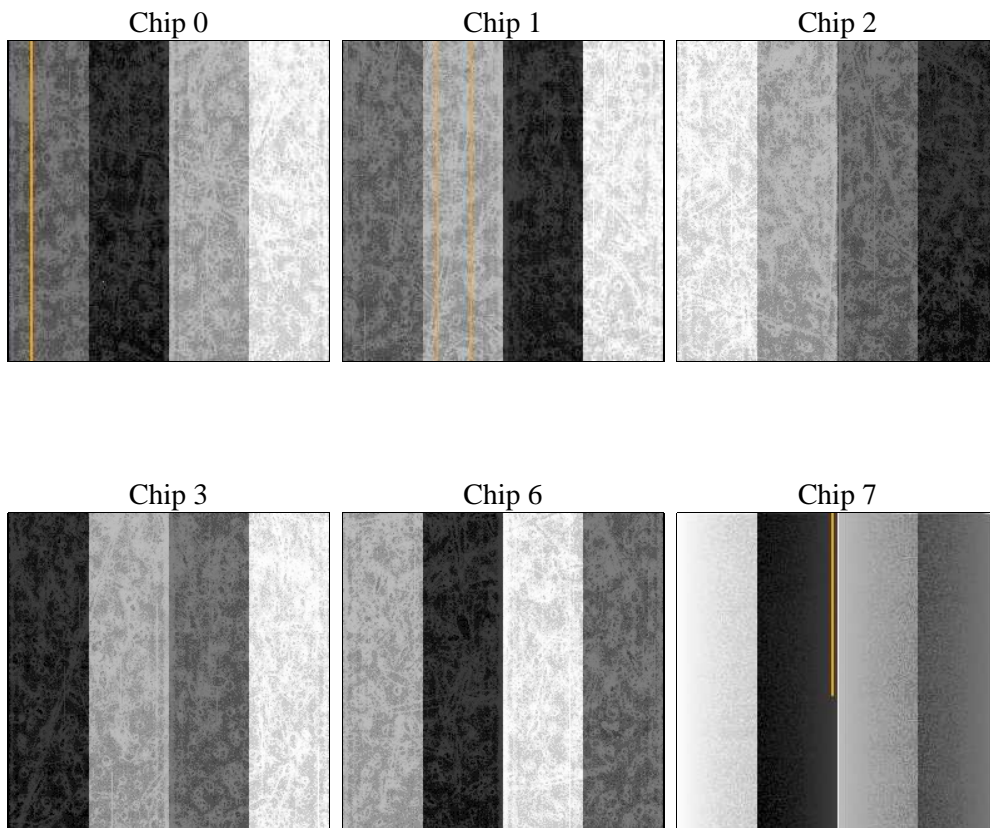
2 OBI

2.1 OBI

2.1.1 Images



2.1.2 Bias



2.1.3 Parameters

obi_num	1	Obi number	sched_exp_time	0.0	[s] Scheduled observation exposure time
ascdsver	8.4.4	Processing system revision	ontime	8271.999969244	Sum of GTIs [s]
caldsver	4.4.9	 	ontime0	8271.999969244	Sum of GTIs [s]
date	2012-05-20T00:40:00	Date and time of file creation	ontime1	8271.999969244	Sum of GTIs [s]
revision	2	Processing version of data	ontime2	8271.999969244	Sum of GTIs [s]
			ontime3	8271.999969244	Sum of GTIs [s]
			ontime6	8271.999969244	Sum of GTIs [s]
			ontime7	8271.999969244	Sum of GTIs [s]
			l1events	1030020	Number of level 1 events

2.1.4 Events

	ccd 0	ccd 1	ccd 2	ccd 3	ccd 6	ccd 7		ccd 0	ccd 1	ccd 2	ccd 3	ccd 6	ccd 7
level 1 events	162432	162259	169037	168984	171110	196198	grade 0 events	49494	49092	50635	51082	50417	25163
rejected events	70372	69285	76680	76107	75099	67936		30%	30%	29%	30%	29%	12%
rejected %	43%	42%	45%	45%	43%	34%	grade 1 events	355	297	389	414	300	152
								0%	0%	0%	0%	0%	0%
							grade 2 events	16360	17232	15828	16067	17139	27698
								10%	10%	9%	9%	10%	14%
							grade 3 events	6204	6178	6255	6240	6289	12036
								3%	3%	3%	3%	3%	6%
							grade 4 events	6084	6136	6369	6173	6293	11854
								3%	3%	3%	3%	3%	6%
							grade 5 events	4013	4185	3758	4396	4382	11023
								2%	2%	2%	2%	2%	5%
							grade 6 events	13951	14369	13302	13354	15912	51545
								8%	8%	7%	7%	9%	26%
							grade 7 events	65971	64770	72501	71258	70378	56727
								40%	39%	42%	42%	41%	28%

2.2 Compared Parameters

Parameter	Planned	Actual	Parameter	Planned	Actual
Instrument	ACIS	ACIS	Obspar format version number	7	7
Detector	ACIS-012367	ACIS-012367	Obspar file type	PREDICTED	ACTUAL
Grating	NONE	NONE	Obspar update status	NONE	UPDATED
Data mode	FAINT	FAINT	Number of optional ACIS chips dropped	0	0
Observation mode	SECONDARY	SECONDARY	On-chip summing requested	N	N
[deg] Pointing RA	0	351.0094179575075	Subarray requested	NONE	NONE
[deg] Pointing Dec	0	-29.97058742953291	Alternating exposures requested	N	N
[deg] Pointing Roll	0.0	40.55356926090637	[s] Primary exposure time	3.2	3.2
[mm] SIM focus pos	-1.429586	-0.6828225247311905			
[mm] SIM defocus	0.1037507710433287	0.8505141146731063			
[mm] SIM translation stage pos	250.455976	250.466033080201			
[mm] SIM translation stage offset	0	-0.01005468664627074			
[s] Observation start time (MET)	336100296.62767	336100295.60267			
Observation start date	2008-08-26T01:11:37	2008-08-26T01:11:35			
[s] Observation end time (MET)	336123447.278806	336123446.25381			
Observation end date	2008-08-26T07:37:27	2008-08-26T07:37:26			
Read mode	TIMED	TIMED			

2.3 Star Slots

2.4 FID Slots

A Summary

A.1 Status

V&V Scientist	Beth Sundheim
V&V Date (YYYY-MM-DD)	2012.05.29
V&V Edition	1
V&V Disposition and Status	OK
V&V Charge Time	8.271999969244

A.2 Comments