

V&V Reference Report

L2 ASCDS Version : 8.4.5

Observation 56845 - L2 Version 2
Chandra X-Ray Center

L2 Processing Date : Jun 13 2012

Contents

1	Front	2
2	OBI	3
2.1	OBI	3
2.1.1	Images	3
2.1.2	Bias	3
2.1.3	Parameters	4
2.1.4	Events	4
2.2	Compared Parameters	5
2.3	Star Slots	6
2.4	FID Slots	6
A	Summary	7
A.1	Status	7
A.2	Comments	7

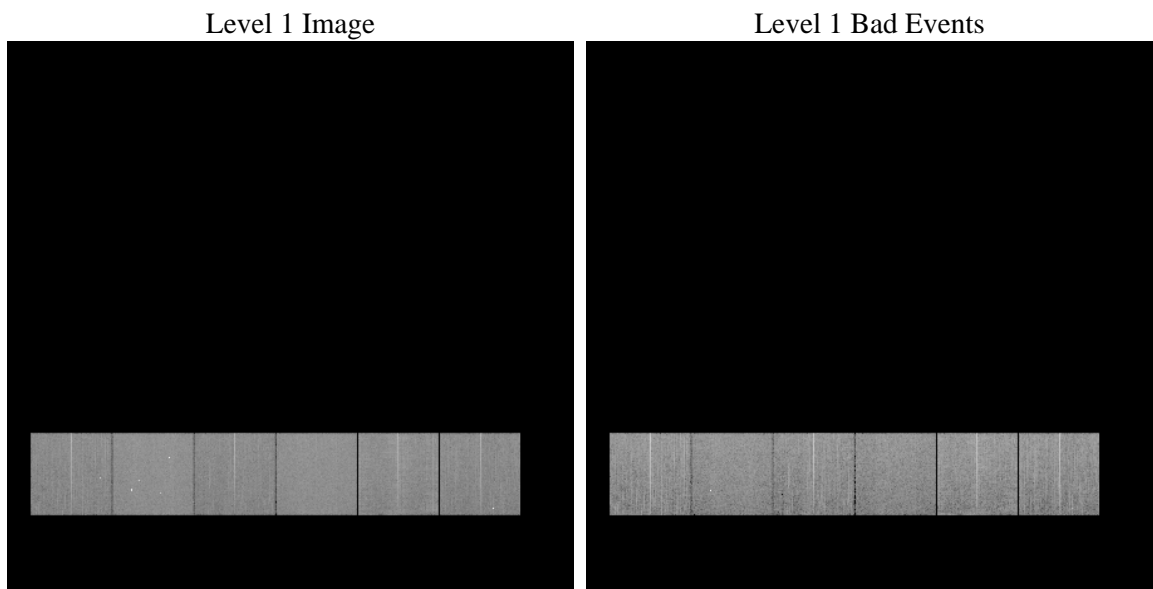
1 Front

seq_num	 	Sequence number
obs_id	56845	Observation id
title	ACIS-456789 diagnostics	Proposal title
observer	CHANDRA engineering request/realtime commanding	Principal investig
object	 	Source name
dtcycle	0	
cycle	P	events from which exps? Prim/Second/Both
ra_targ	0.0	Observer's specified target RA [deg]
dec_targ	0.0	Observer's specified target Dec [deg]
ra_nom	325.03587668015	Nominal RA [deg]
dec_nom	-37.002128895192	Nominal Dec [deg]
roll_nom	322.89229536759	Nominal Roll [deg]
revision	2	Processing version of data
ontime	8268.7999692559	Sum of GTIs [s]
livetime	8164.0954451716	Livetime [s]
ontime4	8268.7999692559	Sum of GTIs [s]
ontime5	8268.7999692559	Sum of GTIs [s]
ontime6	8268.7999692559	Sum of GTIs [s]
ontime7	8268.7999692559	Sum of GTIs [s]
ontime8	8268.7999692559	Sum of GTIs [s]
ontime9	8268.7999692559	Sum of GTIs [s]
l2events	499751	Number of level 2 events

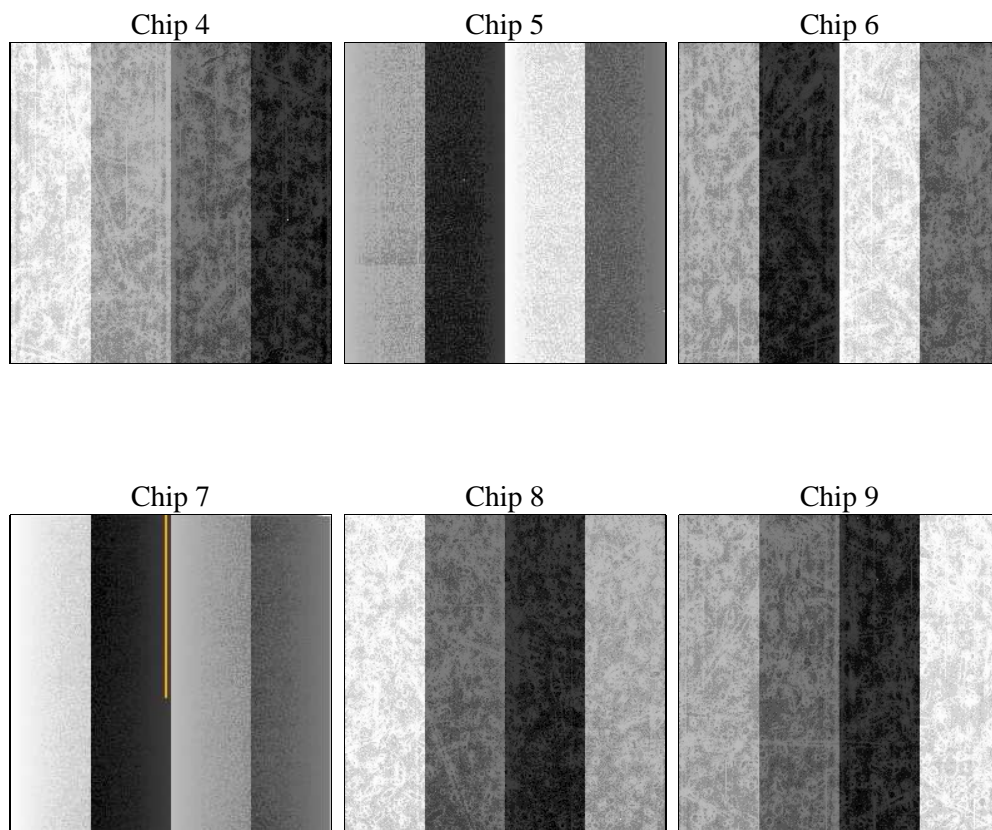
2 OBI

2.1 OBI

2.1.1 Images



2.1.2 Bias



2.1.3 Parameters

obi_num	0	Obi number	sched_exp_time	0.0	[s] Scheduled observation exposure time
ascdsver	8.4.5	Processing system revision	ontime	8268.7999692559	Sum of GTIs [s]
caldsver	4.4.10	 	ontime4	8268.7999692559	Sum of GTIs [s]
date	2012-06-13T04:13:02	Date and time of file creation	ontime5	8268.7999692559	Sum of GTIs [s]
revision	2	Processing version of data	ontime6	8268.7999692559	Sum of GTIs [s]
			ontime7	8268.7999692559	Sum of GTIs [s]
			ontime8	8268.7999692559	Sum of GTIs [s]
			ontime9	8268.7999692559	Sum of GTIs [s]
			l1events	1038610	Number of level 1 events

2.1.4 Events

	ccd 4	ccd 5	ccd 6	ccd 7	ccd 8	ccd 9		ccd 4	ccd 5	ccd 6	ccd 7	ccd 8	ccd 9
level 1 events	160314	194509	157124	186201	181208	159254	grade 0 events	41055	18145	40319	20511	44690	42106
rejected events	87580	77294	80049	72586	89229	82267		25%	9%	25%	11%	24%	26%
rejected %	54%	39%	50%	38%	49%	51%	grade 1 events	453	225	263	153	314	343
								0%	0%	0%	0%	0%	0%
							grade 2 events	11621	41298	13970	24503	17561	12956
								7%	21%	8%	13%	9%	8%
							grade 3 events	5206	5301	5067	10524	6931	5149
								3%	2%	3%	5%	3%	3%
							grade 4 events	5183	5223	5041	10464	6605	4973
								3%	2%	3%	5%	3%	3%
							grade 5 events	4380	10143	4670	11832	5919	5133
								2%	5%	2%	6%	3%	3%
							grade 6 events	9669	47248	12678	47613	16192	11803
								6%	24%	8%	25%	8%	7%
							grade 7 events	82747	66926	75116	60601	82996	76791
								51%	34%	47%	32%	45%	48%

2.2 Compared Parameters

Parameter	Planned	Actual	Parameter	Planned	Actual
Instrument	ACIS	ACIS	Obspar format version number	7	7
Detector	ACIS-456789	ACIS-456789	Obspar file type	PREDICTED	ACTUAL
Grating	NONE	NONE	Obspar update status	NONE	UPDATED
Data mode	FAINT	FAINT	Number of optional ACIS chips dropped	0	0
Observation mode	SECONDARY	SECONDARY	On-chip summing requested	N	N
[deg] Pointing RA	0	325.0358766801545	Subarray requested	NONE	NONE
[deg] Pointing Dec	0	-37.00212889519162	Alternating exposures requested	N	N
[deg] Pointing Roll	0.0	322.8922953675856	[s] Primary exposure time	3.2	3.2
[mm] SIM focus pos	-1.429586	-0.7809083437167272			
[mm] SIM defocus	0.1037507710433287	0.7524282956875696			
[mm] SIM translation stage pos	250.455976	250.466033080201			
[mm] SIM translation stage offset	0	-0.01005468664627074			
[s] Observation start time (MET)	368738655.747834	368738654.72284			
Observation start date	2009-09-07T19:24:16	2009-09-07T19:24:14			
[s] Observation end time (MET)	368752040.198505	368752039.17351			
Observation end date	2009-09-07T23:07:20	2009-09-07T23:07:19			
Read mode	TIMED	TIMED			

2.3 Star Slots

2.4 FID Slots

A Summary

A.1 Status

V&V Scientist	Jen Lauer
V&V Date (YYYY-MM-DD)	2012.06.17
V&V Edition	1
V&V Disposition and Status	OK
V&V Charge Time	8.2687999692559

A.2 Comments