

# V&V Reference Report

## L2 ASCDS Version : 8.4.5

Observation 56795 - L2 Version 2  
Chandra X-Ray Center

L2 Processing Date : Jun 14 2012

## Contents

<b>1</b>	<b>Front</b>	<b>2</b>
<b>2</b>	<b>OBI</b>	<b>3</b>
2.1	OBI . . . . .	3
2.1.1	Images . . . . .	3
2.1.2	Bias . . . . .	3
2.1.3	Parameters . . . . .	4
2.1.4	Events . . . . .	4
2.2	Compared Parameters . . . . .	5
2.3	Star Slots . . . . .	6
2.4	FID Slots . . . . .	6
<b>A</b>	<b>Summary</b>	<b>7</b>
A.1	Status . . . . .	7
A.2	Comments . . . . .	7

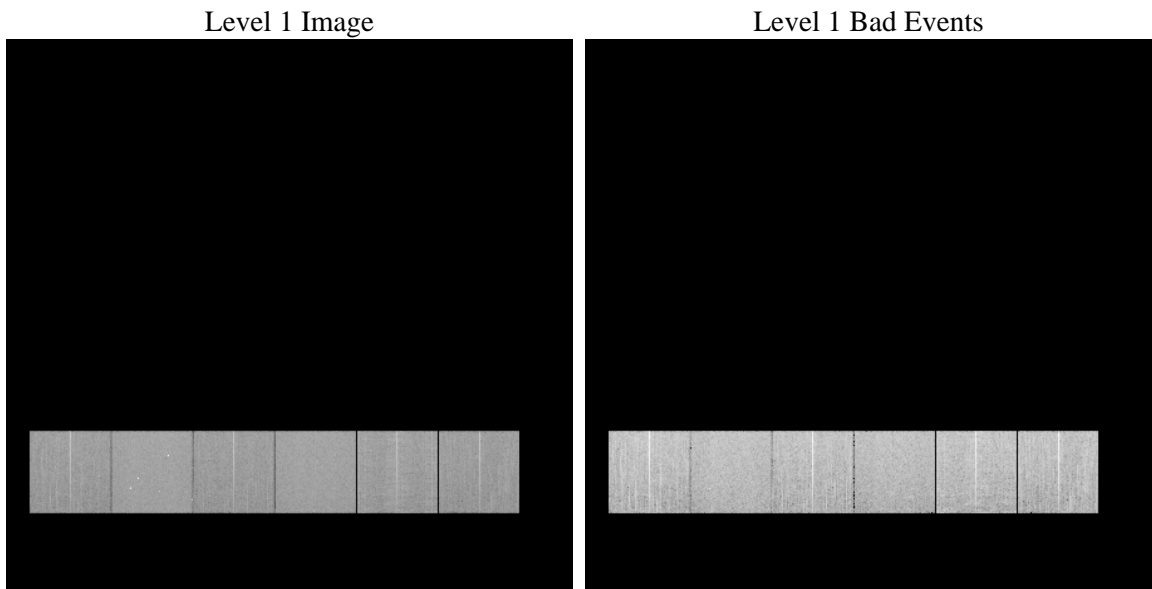
# 1 Front

seq_num	&#160	Sequence number
obs_id	56795	Observation id
title	ACIS-456789 diagnostics	Proposal title
observer	CHANDRA engineering request/realtime commanding	Principal investig
object	&#160	Source name
dtcycle	0	&#160
cycle	P	events from which exps? Prim/Second/Both
ra_targ	0.0	Observer's specified target RA [deg]
dec_targ	0.0	Observer's specified target Dec [deg]
ra_nom	11.317667782312	Nominal RA [deg]
dec_nom	-6.7772684773479	Nominal Dec [deg]
roll_nom	19.566792571711	Nominal Roll [deg]
revision	2	Processing version of data
ontime	7911.2954380512	Sum of GTIs [s]
livetime	7811.1178516044	Livetime [s]
ontime4	7912.2335857153	Sum of GTIs [s]
ontime5	7912.3156657219	Sum of GTIs [s]
ontime6	7912.2746257186	Sum of GTIs [s]
ontime7	7911.2954380512	Sum of GTIs [s]
ontime8	7912.192545712	Sum of GTIs [s]
ontime9	7911.2954380512	Sum of GTIs [s]
l2events	473374	Number of level 2 events

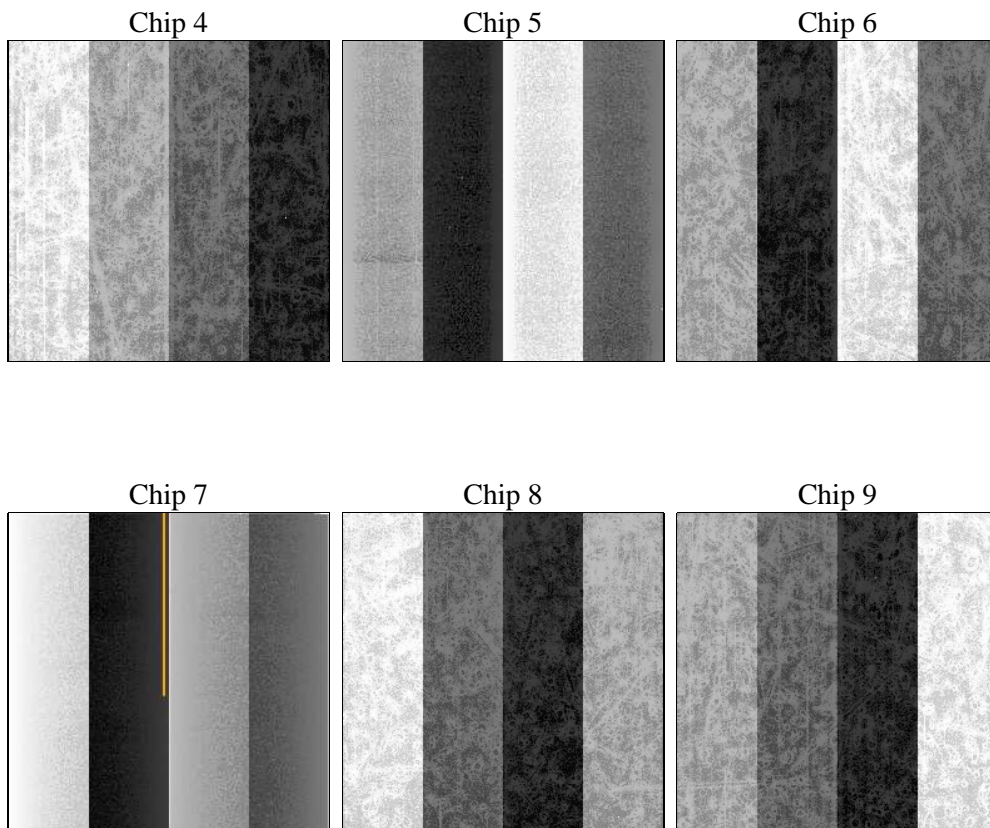
## 2 OBI

### 2.1 OBI

#### 2.1.1 Images



#### 2.1.2 Bias



### 2.1.3 Parameters

obi_num	0	Obi number	sched_exp_time	0.0	[s] Scheduled observation exposure time
ascdsver	8.4.5	Processing system revision	ontime	7911.2954380512	Sum of GTIs [s]
caldsver	4.4.10	&#160	ontime4	7912.2335857153	Sum of GTIs [s]
date	2012-06-14T13:48:31	Date and time of file creation	ontime5	7912.3156657219	Sum of GTIs [s]
revision	2	Processing version of data	ontime6	7912.2746257186	Sum of GTIs [s]
			ontime7	7911.2954380512	Sum of GTIs [s]
			ontime8	7912.192545712	Sum of GTIs [s]
			ontime9	7911.2954380512	Sum of GTIs [s]
			l1events	977745	Number of level 1 events

### 2.1.4 Events

	ccd 4	ccd 5	ccd 6	ccd 7	ccd 8	ccd 9		ccd 4	ccd 5	ccd 6	ccd 7	ccd 8	ccd 9
level 1 events	151239	183224	148867	176940	168383	149092	grade 0 events	38119	17872	37861	19988	41378	37436
rejected events	82916	72200	76584	68465	82333	78556		25%	9%	25%	11%	24%	25%
rejected %	54%	39%	51%	38%	48%	52%	grade 1 events	410	219	273	150	298	305
								0%	0%	0%	0%	0%	0%
							grade 2 events	11457	38061	13172	23675	16424	12439
								7%	20%	8%	13%	9%	8%
							grade 3 events	4847	5171	4641	10303	6409	4759
								3%	2%	3%	5%	3%	3%
							grade 4 events	4818	5027	4577	10027	6436	4841
								3%	2%	3%	5%	3%	3%
							grade 5 events	4283	9894	4354	11349	5847	5012
								2%	5%	2%	6%	3%	3%
							grade 6 events	9118	44939	12062	44482	15438	11061
								6%	24%	8%	25%	9%	7%
							grade 7 events	78187	62041	71927	56966	76153	73239
								51%	33%	48%	32%	45%	49%

## 2.2 Compared Parameters

Parameter	Planned	Actual	Parameter	Planned	Actual
Instrument	ACIS	ACIS	Obspar format version number	7	7
Detector	ACIS-456789	ACIS-456789	Obspar file type	PREDICTED	ACTUAL
Grating	NONE	NONE	Obspar update status	NONE	UPDATED
Data mode	FAINT	FAINT	Number of optional ACIS chips dropped	0	0
Observation mode	SECONDARY	SECONDARY	On-chip summing requested	N	N
[deg] Pointing RA	0	11.31766778231201	Subarray requested	NONE	NONE
[deg] Pointing Dec	0	-6.777268477347917	Alternating exposures requested	N	N
[deg] Pointing Roll	0.0	19.56679257171106	[s] Primary exposure time	3.2	3.2
[mm] SIM focus pos	-1.429586	-0.6828225247311905			
[mm] SIM defocus	0.1037507710433287	0.8505141146731063			
[mm] SIM translation stage pos	250.455976	250.466033080201			
[mm] SIM translation stage offset	0	-0.01005468664627074			
[s] Observation start time (MET)	370794883.751089	370794882.72609			
Observation start date	2009-10-01T14:34:44	2009-10-01T14:34:42			
[s] Observation end time (MET)	370805482.251622	370805481.22662			
Observation end date	2009-10-01T17:31:22	2009-10-01T17:31:21			
Read mode	TIMED	TIMED			

## 2.3 Star Slots

## 2.4 FID Slots

## **A Summary**

### **A.1 Status**

V&V Scientist	Jen Lauer
V&V Date (YYYY-MM-DD)	2012.06.18
V&V Edition	1
V&V Disposition and Status	OK
V&V Charge Time	7.9112954380512

### **A.2 Comments**