

# V&V Reference Report

## L2 ASCDS Version : 8.4.5

Observation 56765 - L2 Version 2  
Chandra X-Ray Center

L2 Processing Date : Jun 14 2012

## Contents

<b>1</b>	<b>Front</b>	<b>2</b>
<b>2</b>	<b>OBI</b>	<b>3</b>
2.1	OBI . . . . .	3
2.1.1	Images . . . . .	3
2.1.2	Bias . . . . .	3
2.1.3	Parameters . . . . .	4
2.1.4	Events . . . . .	4
2.2	Compared Parameters . . . . .	5
2.3	Star Slots . . . . .	6
2.4	FID Slots . . . . .	6
<b>A</b>	<b>Summary</b>	<b>7</b>
A.1	Status . . . . .	7
A.2	Comments . . . . .	7

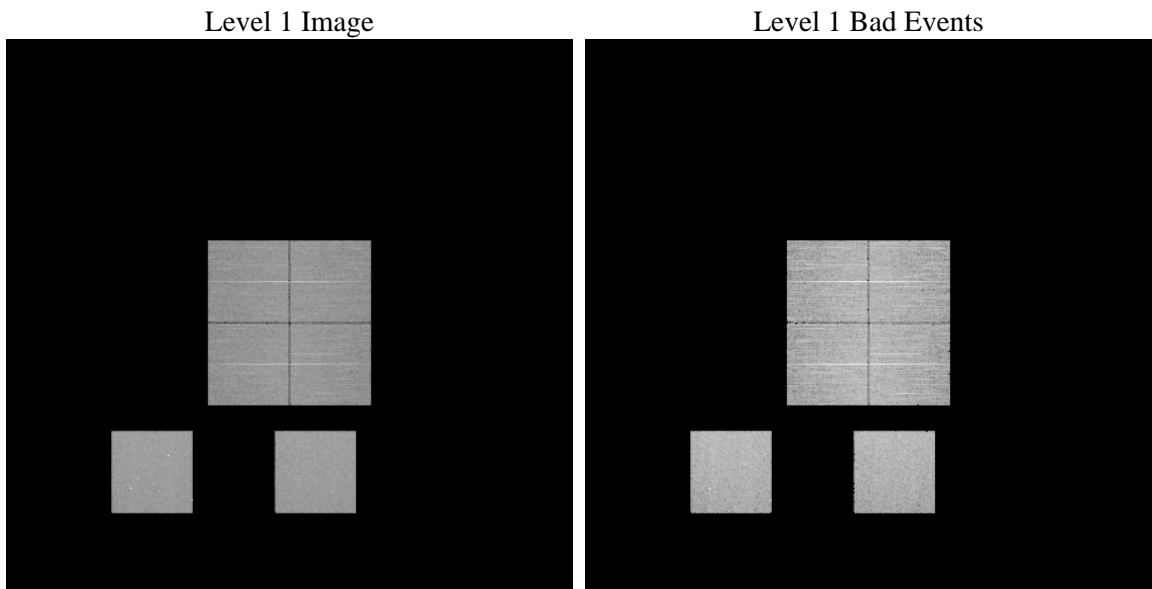
# 1 Front

seq_num	&#160	Sequence number
obs_id	56765	Observation id
title	ACIS-012357 diagnostics	Proposal title
observer	CHANDRA engineering request/realtime commanding	Principal investig
object	&#160	Source name
dtcycle	0	&#160
cycle	P	events from which exps? Prim/Second/Both
ra_targ	0.0	Observer's specified target RA [deg]
dec_targ	0.0	Observer's specified target Dec [deg]
ra_nom	16.470210138477	Nominal RA [deg]
dec_nom	1.3246861763328	Nominal Dec [deg]
roll_nom	257.6158871741	Nominal Roll [deg]
revision	2	Processing version of data
ontime	7084.1972424984	Sum of GTIs [s]
livetime	6994.4928714224	Livetime [s]
ontime0	7084.1562024951	Sum of GTIs [s]
ontime1	7084.1151624918	Sum of GTIs [s]
ontime2	7084.0741224885	Sum of GTIs [s]
ontime3	7084.2382825017	Sum of GTIs [s]
ontime5	7084.0330824852	Sum of GTIs [s]
ontime7	7084.1972424984	Sum of GTIs [s]
l2events	419572	Number of level 2 events

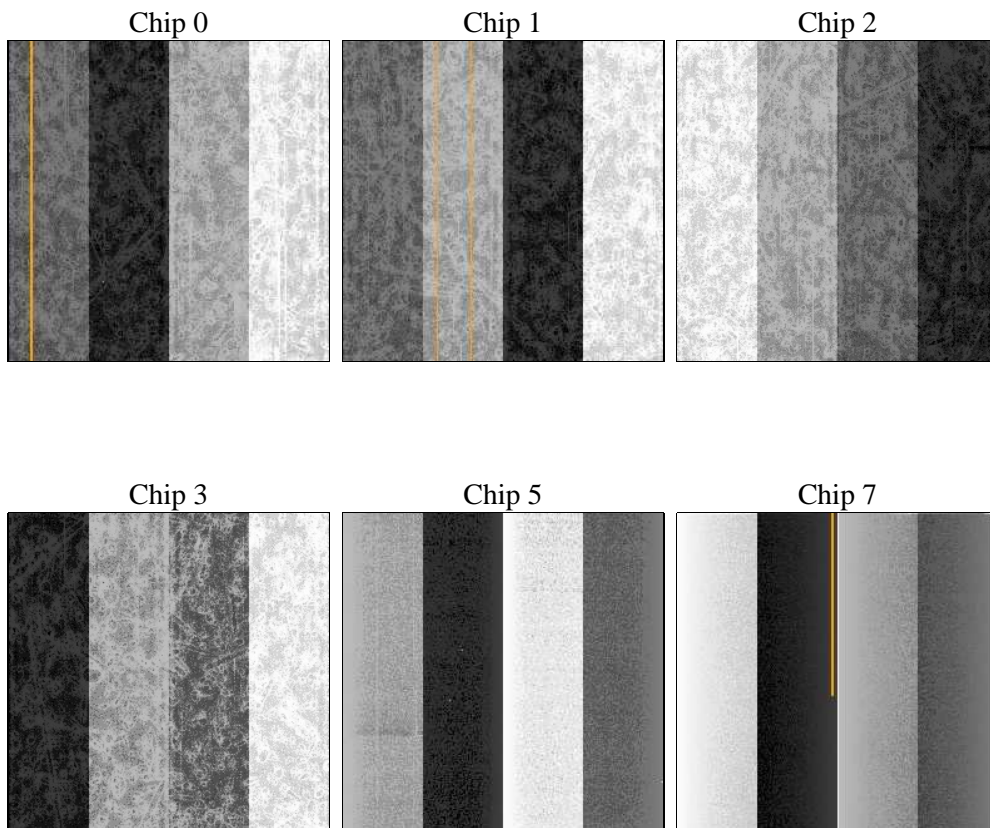
## 2 OBI

### 2.1 OBI

#### 2.1.1 Images



#### 2.1.2 Bias



### 2.1.3 Parameters

obi_num	0	Obi number	sched_exp_time	0.0	[s] Scheduled observation exposure time
ascdsver	8.4.5	Processing system revision	ontime	7084.1972424984	Sum of GTIs [s]
caldsver	4.4.10	&#160	ontime0	7084.1562024951	Sum of GTIs [s]
date	2012-06-14T16:06:53	Date and time of file creation	ontime1	7084.1151624918	Sum of GTIs [s]
revision	2	Processing version of data	ontime2	7084.0741224885	Sum of GTIs [s]
			ontime3	7084.2382825017	Sum of GTIs [s]
			ontime5	7084.0330824852	Sum of GTIs [s]
			ontime7	7084.1972424984	Sum of GTIs [s]
			l1events	857701	Number of level 1 events

### 2.1.4 Events

	ccd 0	ccd 1	ccd 2	ccd 3	ccd 5	ccd 7		ccd 0	ccd 1	ccd 2	ccd 3	ccd 5	ccd 7
level 1 events	128508	130255	132410	133464	169035	164029	grade 0 events	34373	33491	34768	34965	14542	17722
rejected events	66339	67984	70512	71197	70611	68298		26%	25%	26%	26%	8%	10%
rejected %	51%	52%	53%	53%	41%	41%	grade 1 events	251	216	297	273	290	151
								0%	0%	0%	0%	0%	0%
							grade 2 events	11751	12324	10977	11279	36205	21504
								9%	9%	8%	8%	21%	13%
							grade 3 events	4413	4333	4426	4478	4473	9077
								3%	3%	3%	3%	2%	5%
							grade 4 events	4272	4273	4505	4454	4419	9076
								3%	3%	3%	3%	2%	5%
							grade 5 events	3559	3704	3443	4058	8906	10296
								2%	2%	2%	3%	5%	6%
							grade 6 events	9740	10294	9651	9518	42430	42050
								7%	7%	7%	7%	25%	25%
							grade 7 events	60149	61620	64343	64439	57770	54153
								46%	47%	48%	48%	34%	33%

## 2.2 Compared Parameters

Parameter	Planned	Actual
Instrument	ACIS	ACIS
Detector	ACIS-012357	ACIS-012357
Grating	NONE	NONE
Data mode	FAINT	FAINT
Observation mode	SECONDARY	SECONDARY
[deg] Pointing RA	0	16.47021013847732
[deg] Pointing Dec	0	1.324686176332799
[deg] Pointing Roll	0.0	257.6158871740973
[mm] SIM focus pos	-0.68282252473119	-0.68282252473119
[mm] SIM defocus	0.8505140384245534	0.8505140384245534
[mm] SIM translation stage pos	250.4660330802	250.4660330802
[mm] SIM translation stage offset	-0.01005726120527584	-0.01005726120527584
[s] Observation start time (MET)	371292373.676098	371292373.676098
Observation start date	2009-10-07T08:46:14	2009-10-07T08:46:13
[s] Observation end time (MET)	371301278.616656	371301278.616656
Observation end date	2009-10-07T11:14:39	2009-10-07T11:14:38
Read mode	TIMED	TIMED

Parameter	Planned	Actual
Obspar format version number	7	7
Obspar file type	PREDICTED	ACTUAL
Obspar update status	OVERRIDE	OVERRIDE
Number of optional ACIS chips dropped	0	0
On-chip summing requested	N	N
Subarray requested	NONE	NONE
Alternating exposures requested	N	N
[s] Primary exposure time	3.2	3.2

## **2.3 Star Slots**

## **2.4 FID Slots**

## A Summary

### A.1 Status

V&V Scientist	Beth Sundheim
V&V Date (YYYY-MM-DD)	2012.06.19
V&V Edition	1
V&V Disposition and Status	OK
V&V Charge Time	7.0841972424984

### A.2 Comments