

V&V Reference Report

L2 ASCDS Version : 7.6.7

Observation 5655 - L2 Version 002
Chandra X-Ray Center

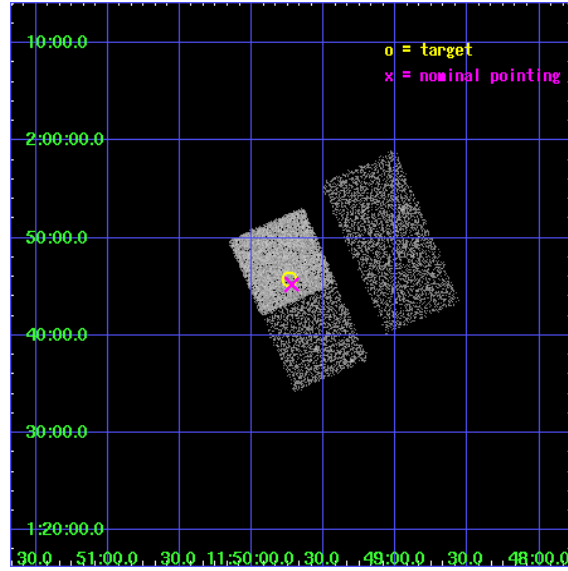
L2 Processing Date: Mar 2 2006

Contents

1	Front	2
2	OBI	3
2.1	OBI	3
2.1.1	Images	3
2.1.2	Bias	3
2.1.3	Parameters	4
2.1.4	Events	4
2.2	Compared Parameters	5
2.3	Aspect	6
2.4	Star Slots	9
2.4.1	Slot 3	9
2.4.2	Slot 4	10
2.4.3	Slot 5	11
2.4.4	Slot 6	12
2.4.5	Slot 7	13
2.5	FID Slots	14
2.5.1	Slot 0	14
2.5.2	Slot 1	15
2.5.3	Slot 2	16
3	Point Sources	17
A	Summary	18
A.1	Status	18
A.2	Comments	18

1 Front

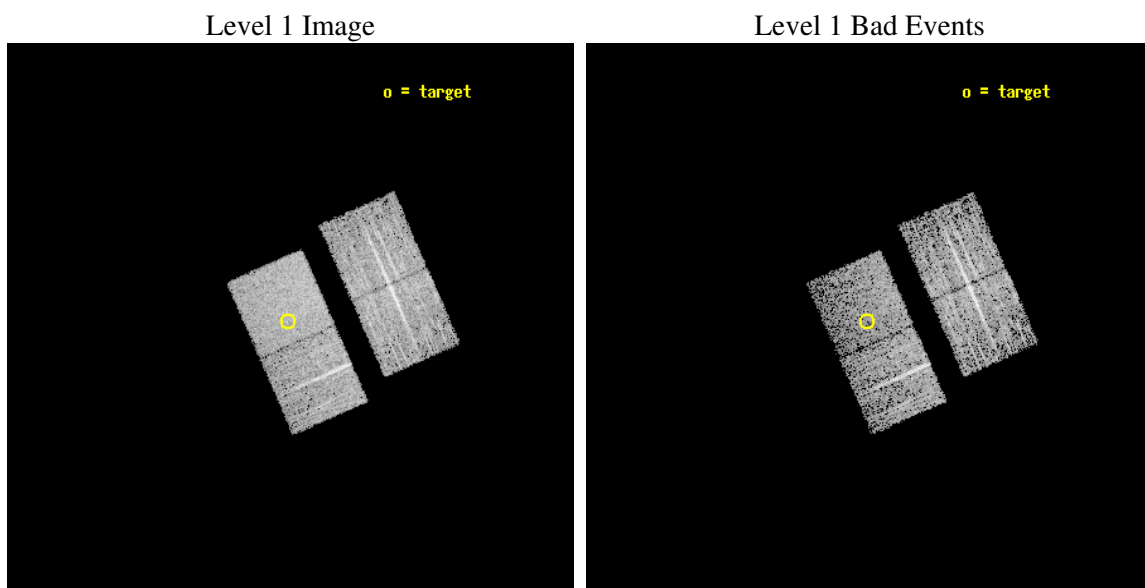
seq_num	701078
obs_id	5655
title	The Spectral Energy Distribution and Fe II Emission in Intermediate-Redshift Narrow-line Seyfert 1 Galaxies
observer	PROF. KAREN LEIGHLY
object	SDSS J114944.47+014542.5
dtcycle	0
cycle	P
ra_targ	177.435417
dec_targ	1.761806
ra_nom	177.43011335876
dec_nom	1.7536949568696
roll_nom	246.1792768987
revision	2
ontime	4749.1999908686
livetime	4687.1481966777
ontime2	4749.1999908686
ontime3	4749.1999908686
ontime6	4749.1999908686
ontime7	4749.1999908686
l2events	20684



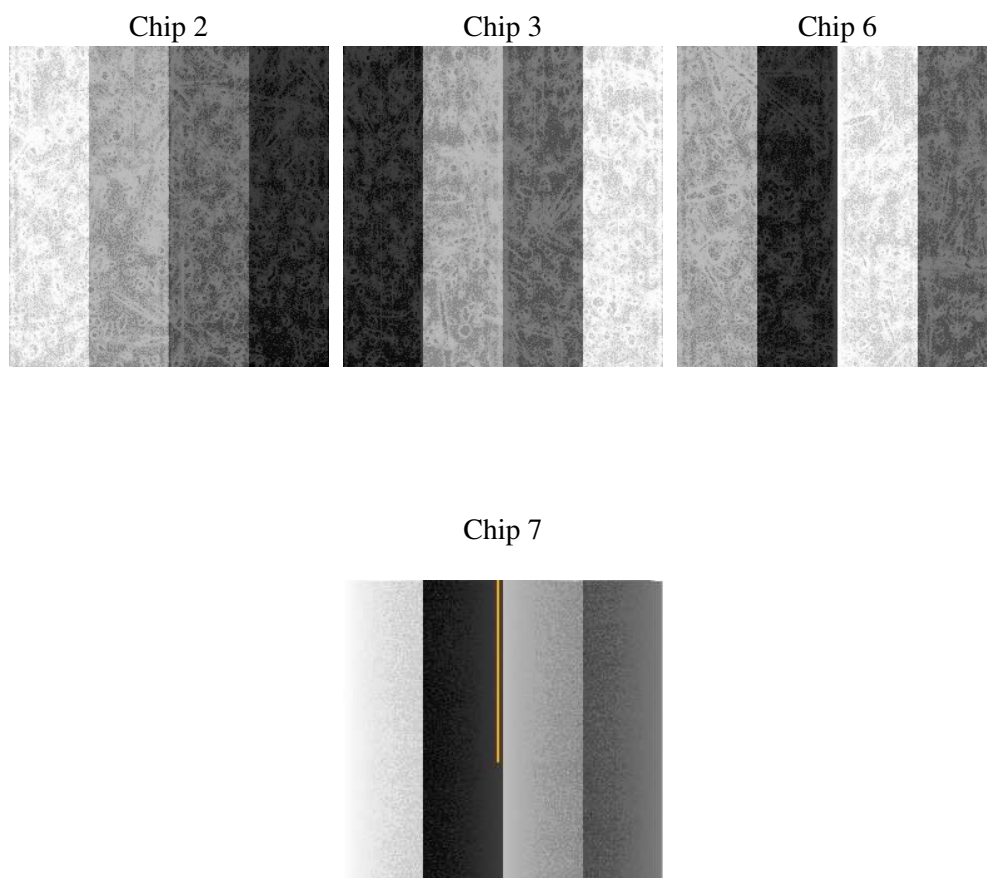
2 OBI

2.1 OBI

2.1.1 Images



2.1.2 Bias



2.1.3 Parameters

obi_num	0
ascdsver	7.6.7
caldbver	3.2.1
date	2006-03-02T10:58:22
revision	2

sched_exp_time	4700.000000
ontime	4755.4933667183
ontime2	4755.4933667183
ontime3	4755.4933667183
ontime6	4755.4933667183
ontime7	4755.4933667183
llevents	119633

2.1.4 Events

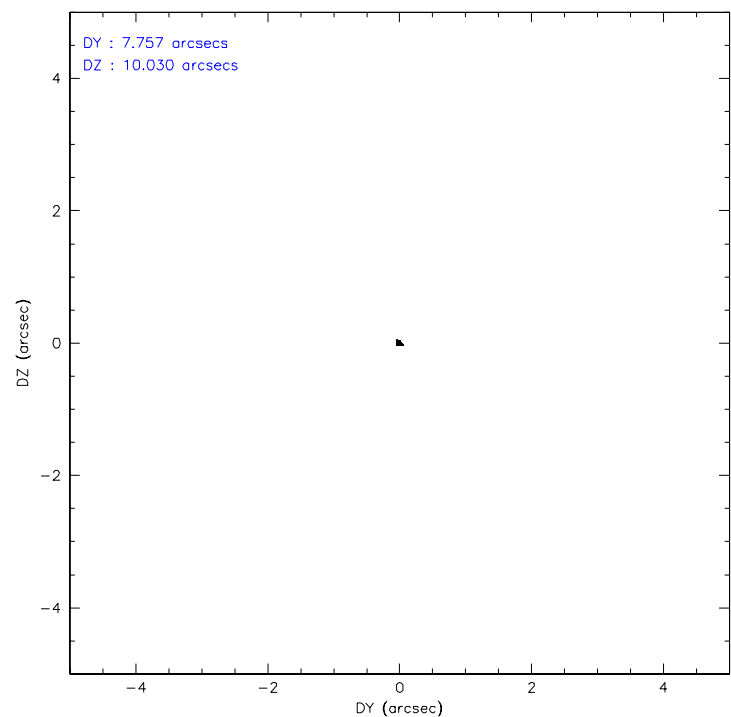
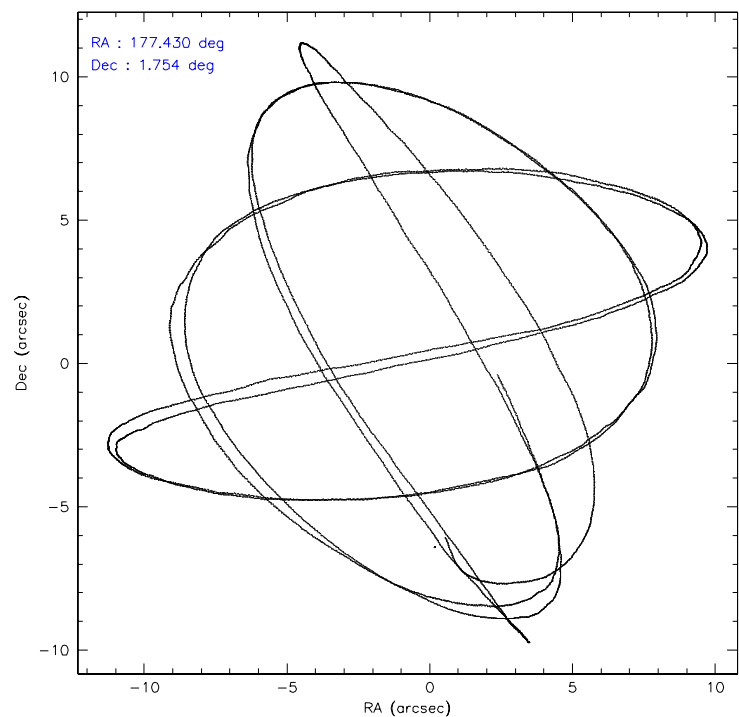
	ccd 2	ccd 3	ccd 6	ccd 7
level 1 events	30142	28719	28080	32692
rejected events	27367	25844	24970	19108
rejected %	90%	89%	88%	58%

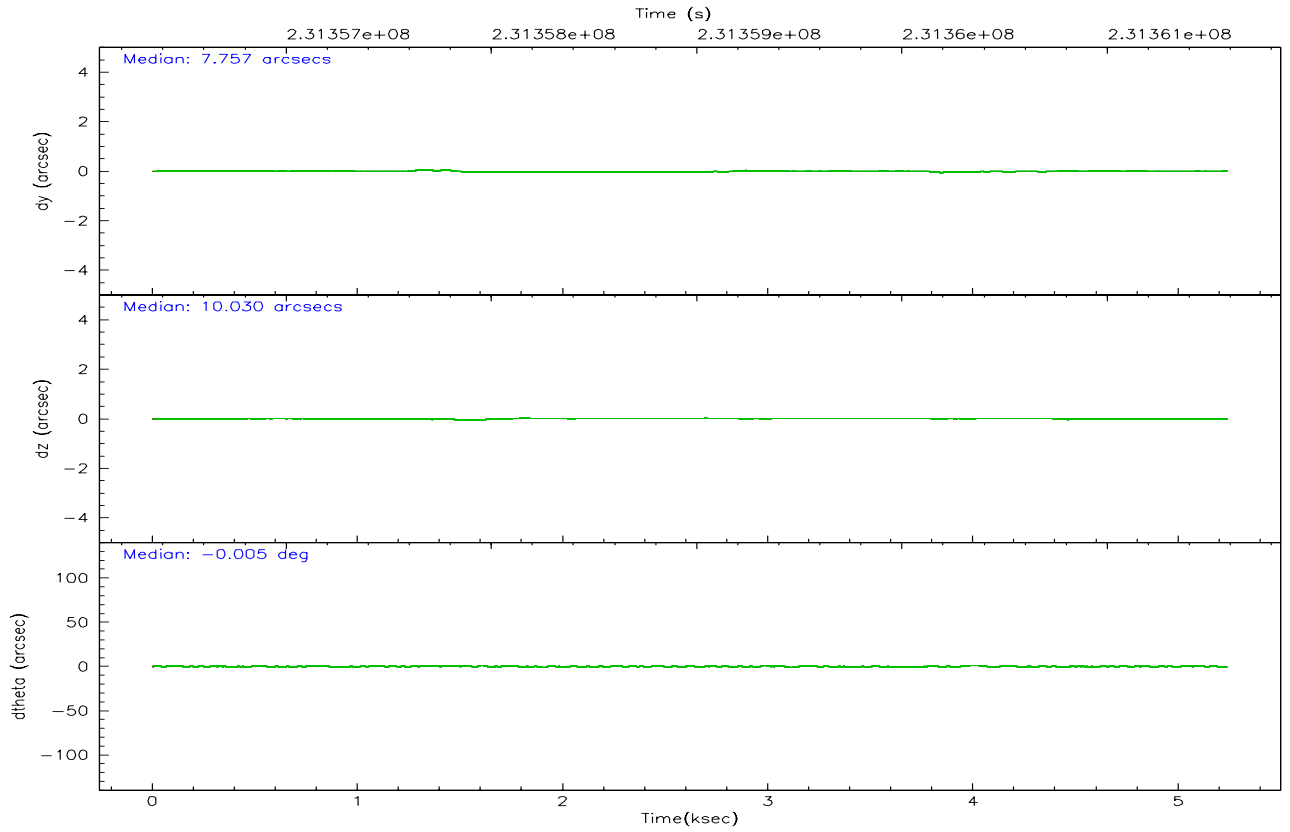
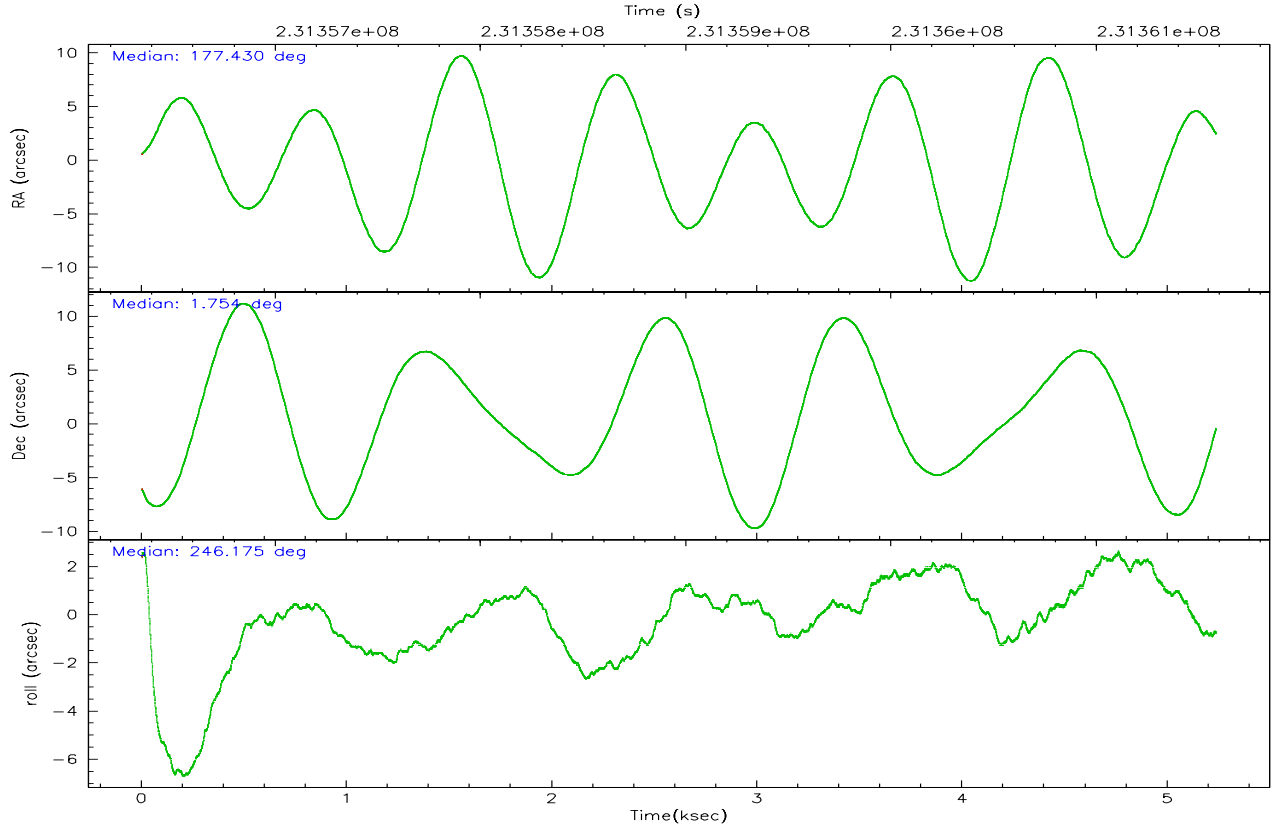
	ccd 2	ccd 3	ccd 6	ccd 7
grade 0 events	1013	962	1128	782
	3%	3%	4%	2%
grade 1 events	18	16	17	15
	0%	0%	0%	0%
grade 2 events	653	643	658	3506
	2%	2%	2%	10%
grade 3 events	300	347	327	754
	0%	1%	1%	2%
grade 4 events	318	333	358	742
	1%	1%	1%	2%
grade 5 events	963	1166	1205	2510
	3%	4%	4%	7%
grade 6 events	496	592	644	7827
	1%	2%	2%	23%
grade 7 events	26381	24660	23743	16556
	87%	85%	84%	50%

2.2 Compared Parameters

Parameter	Planned	Actual	Parameter	Planned	Actual
Instrument	ACIS	ACIS	Obspar format version number	6	6
Detector	ACIS-2367	ACIS-2367	Obspar file type	PREDICTED	ACTUAL
Grating	NONE	NONE	Obspar update status	NONE	UPDATED
Data mode	VFAINT	VFAINT	On-chip summing requested	N	N
Observation mode	POINTING	POINTING	Subarray requested	NONE	NONE
Pointing RA	177.426720	177.4301133587557	Alternating exposures requested	N	N
Pointing Dec	1.780814	1.753694956869563	Primary exposure time	0.000000	3.1
Pointing Roll	246.022733	246.1792768986988			
SIM focus pos (mm)	-0.684267	-0.6828225247311905			
SIM defocus (mm)	0	0.001444936568705701			
SIM translation stage pos (mm)	-190.132523	-190.1400660498719			
SIM translation stage offset (mm)	0	0.00754346686406393			
Observation start time	231356891.184000	231355846.83448			
Observation start date	2005-05-01T17:47:07	2005-05-01T17:30:46			
Observation end time	231361591.184000	231362544.69728			
Observation end date	2005-05-01T19:05:27	2005-05-01T19:22:24			
Read mode	TIMED	TIMED			

2.3 Aspect



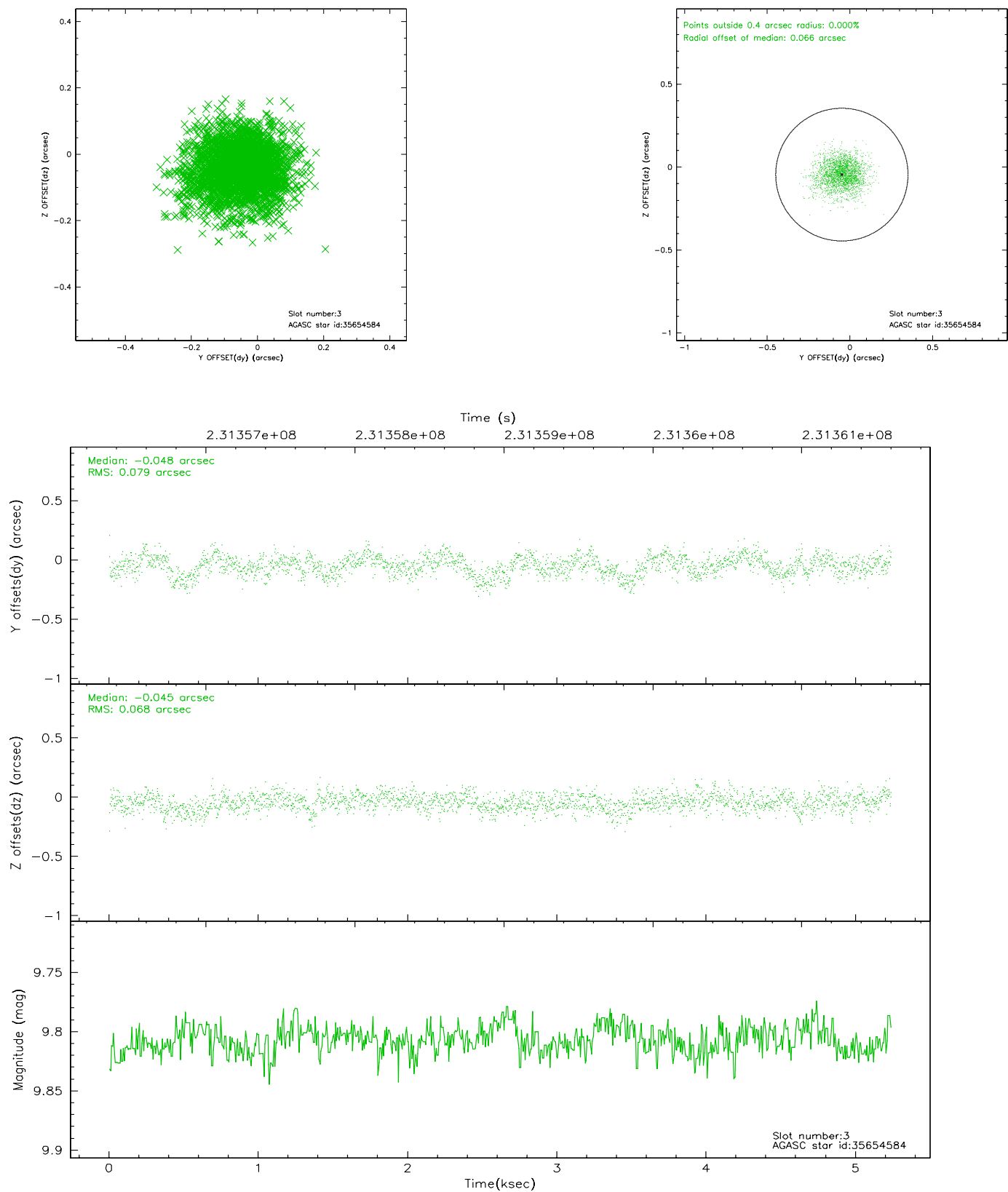


Slot Statistics

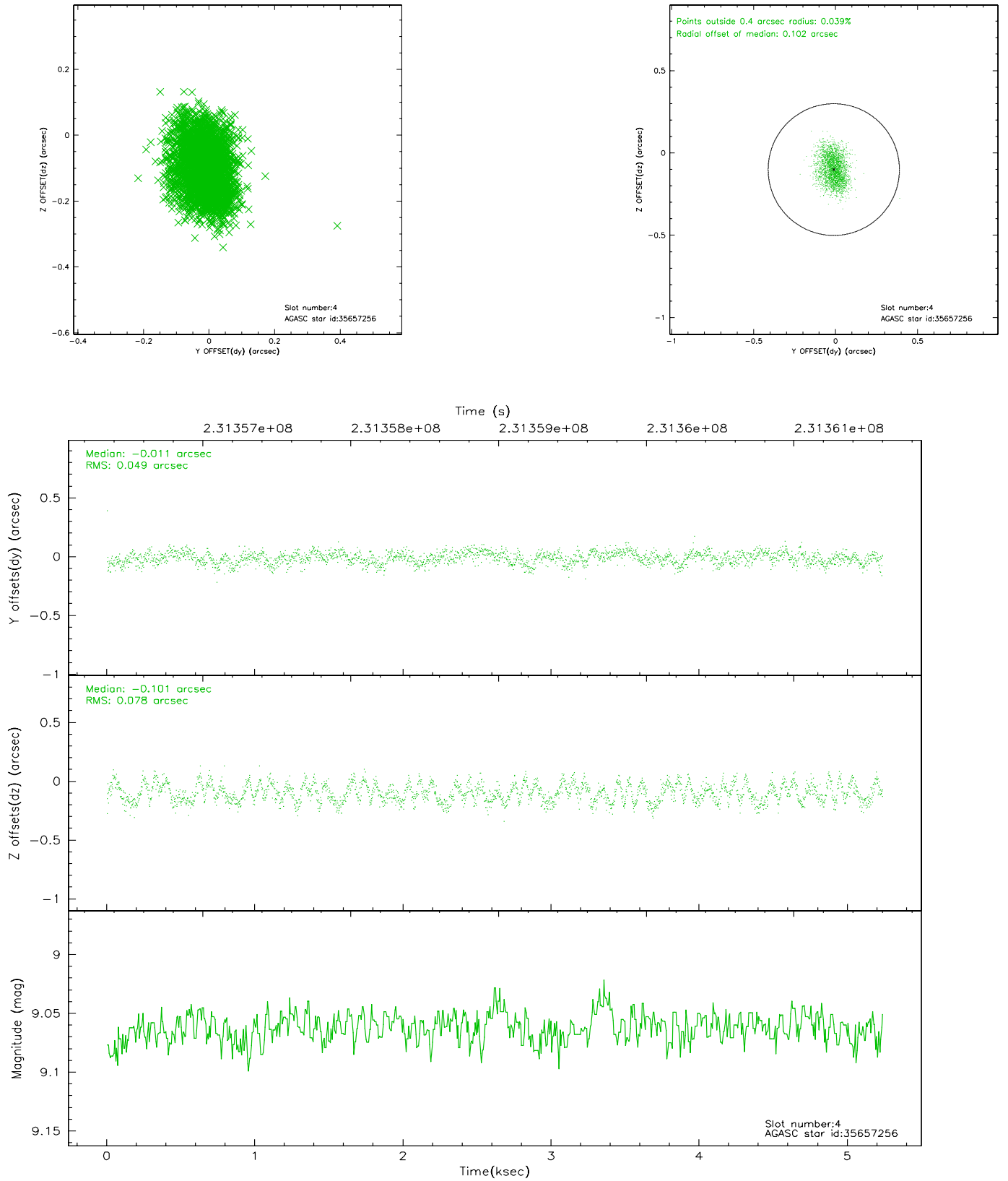
slot	status	id	mag	n_pts	med_dy	med_dz	dr1	dr2	ra	dec	mean_y	mean_z
0	FID	ACIS-S-2	7.10	1278	-0.032	0.002	0.006	0.010	0.000000	0.000000	-760.51	-1731.29
1	FID	ACIS-S-4	7.21	1278	0.062	0.015	0.005	0.008	0.000000	0.000000	2152.29	176.08
2	FID	ACIS-S-5	7.23	1278	-0.061	-0.009	0.006	0.010	0.000000	0.000000	-1811.94	170.95
3	GUIDE	35654584	9.81	2553	-0.048	-0.045	0.111	0.182	177.454333	2.359317	-1943.05	-756.38
4	GUIDE	35657256	9.06	2552	-0.011	-0.101	0.100	0.155	176.857006	2.013332	67.26	-2213.98
5	GUIDE	35658416	7.89	2554	-0.054	-0.089	0.074	0.119	176.725004	1.604214	1606.93	-2050.19
6	GUIDE	35786024	9.52	2540	-0.022	0.026	0.153	0.234	177.790022	1.785804	-547.00	1185.80
7	GUIDE	35788008	9.43	2554	0.148	0.215	0.118	0.182	177.612047	1.006805	2274.82	1742.58

2.4 Star Slots

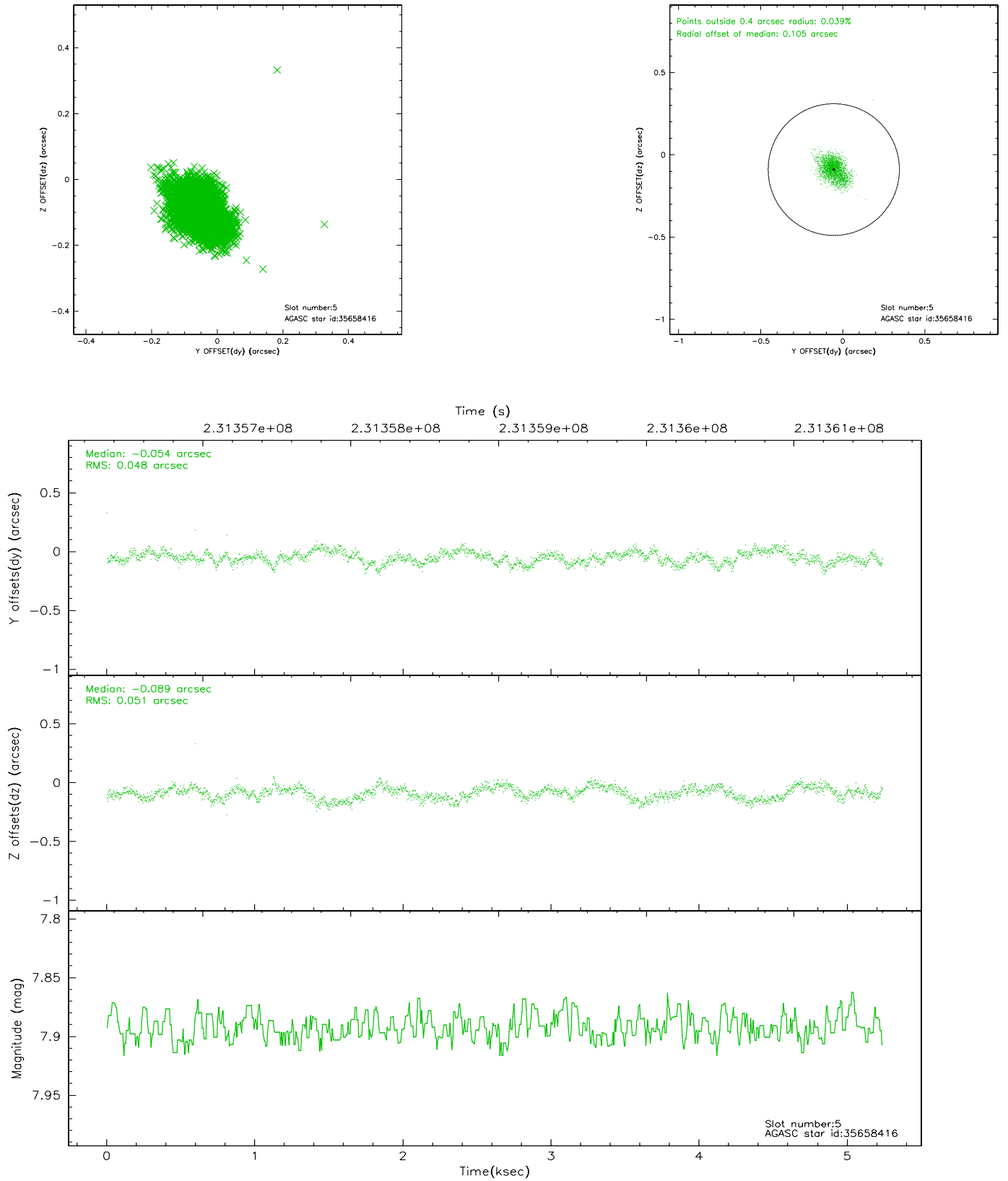
2.4.1 Slot 3



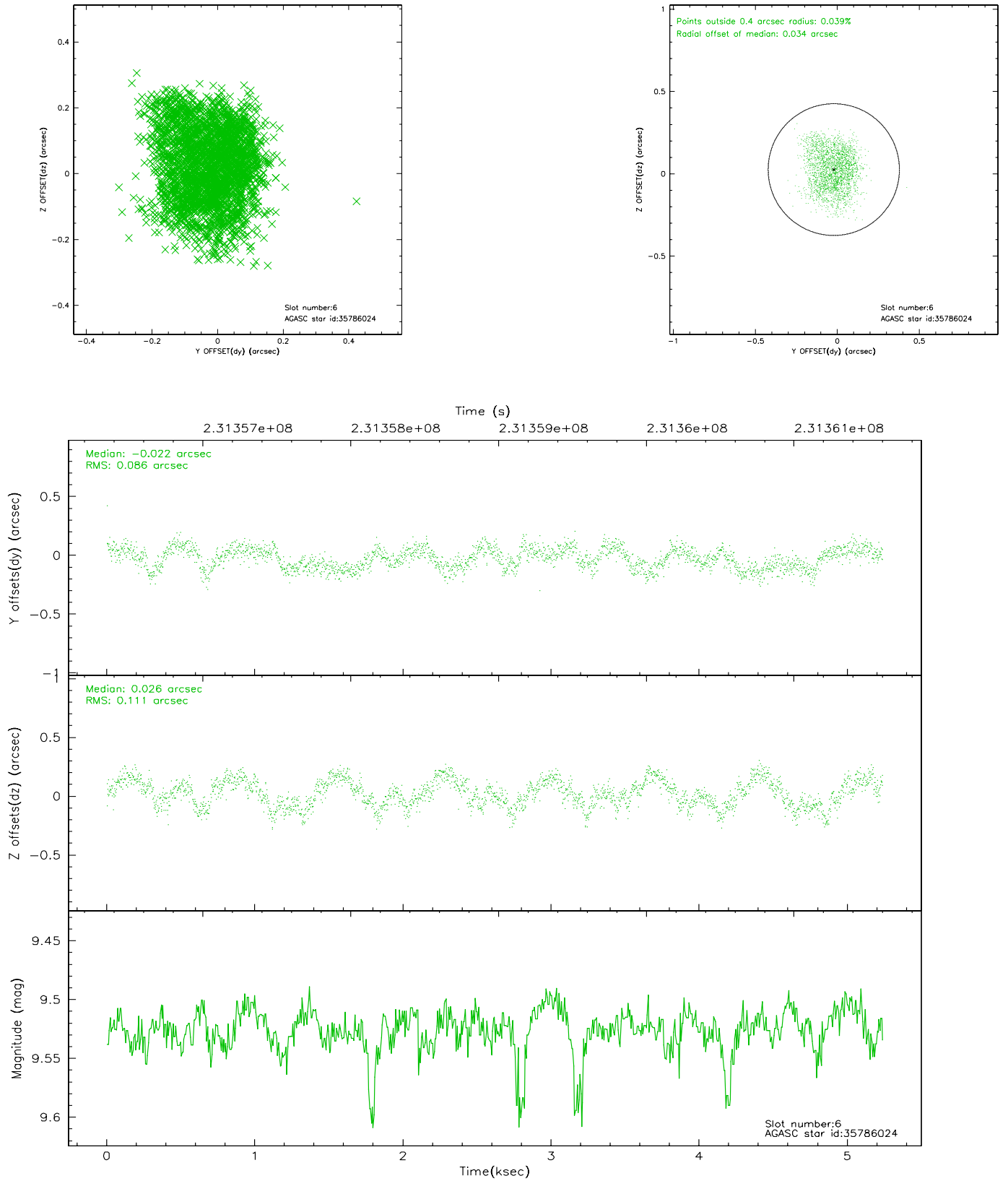
2.4.2 Slot 4



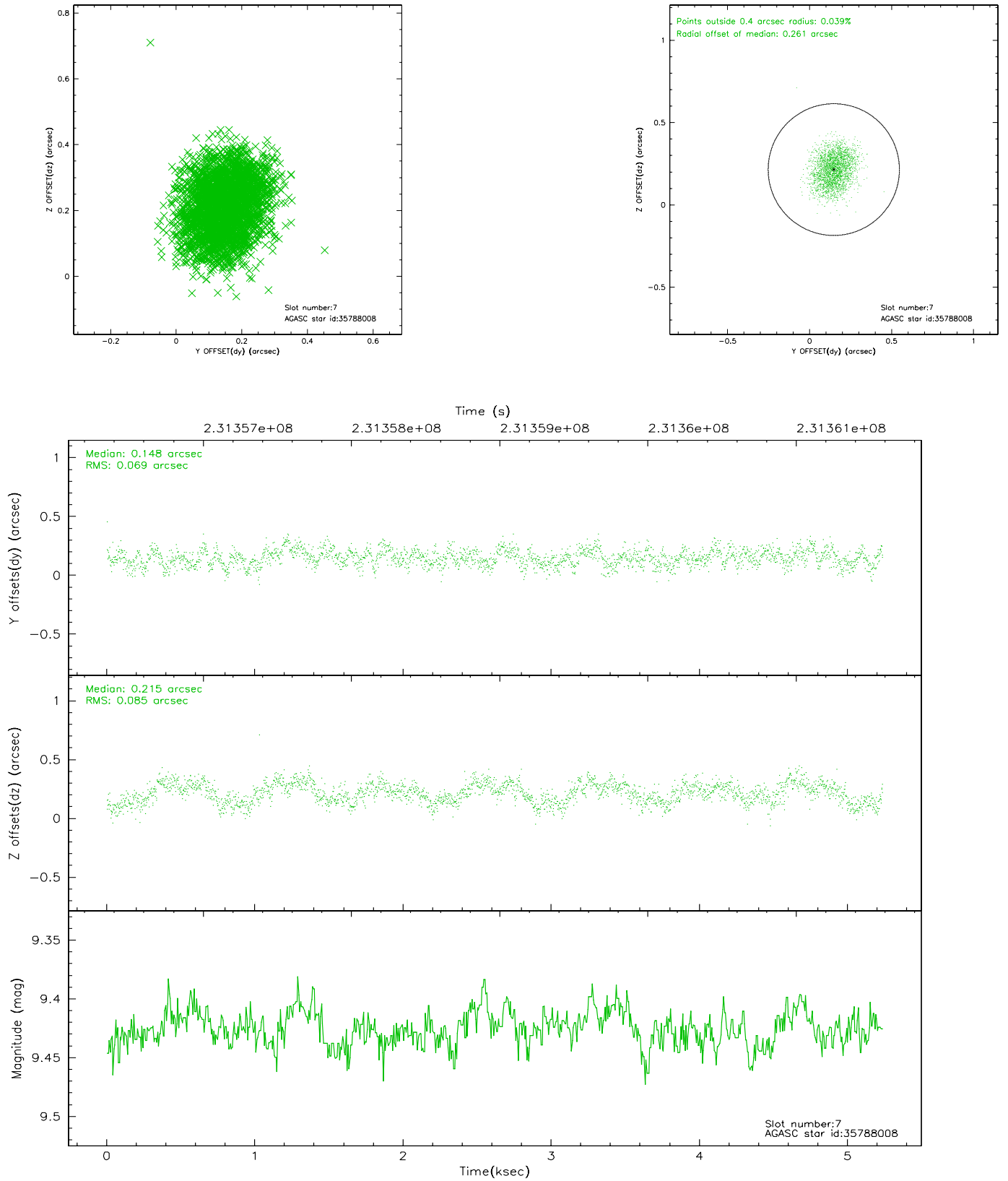
2.4.3 Slot 5



2.4.4 Slot 6

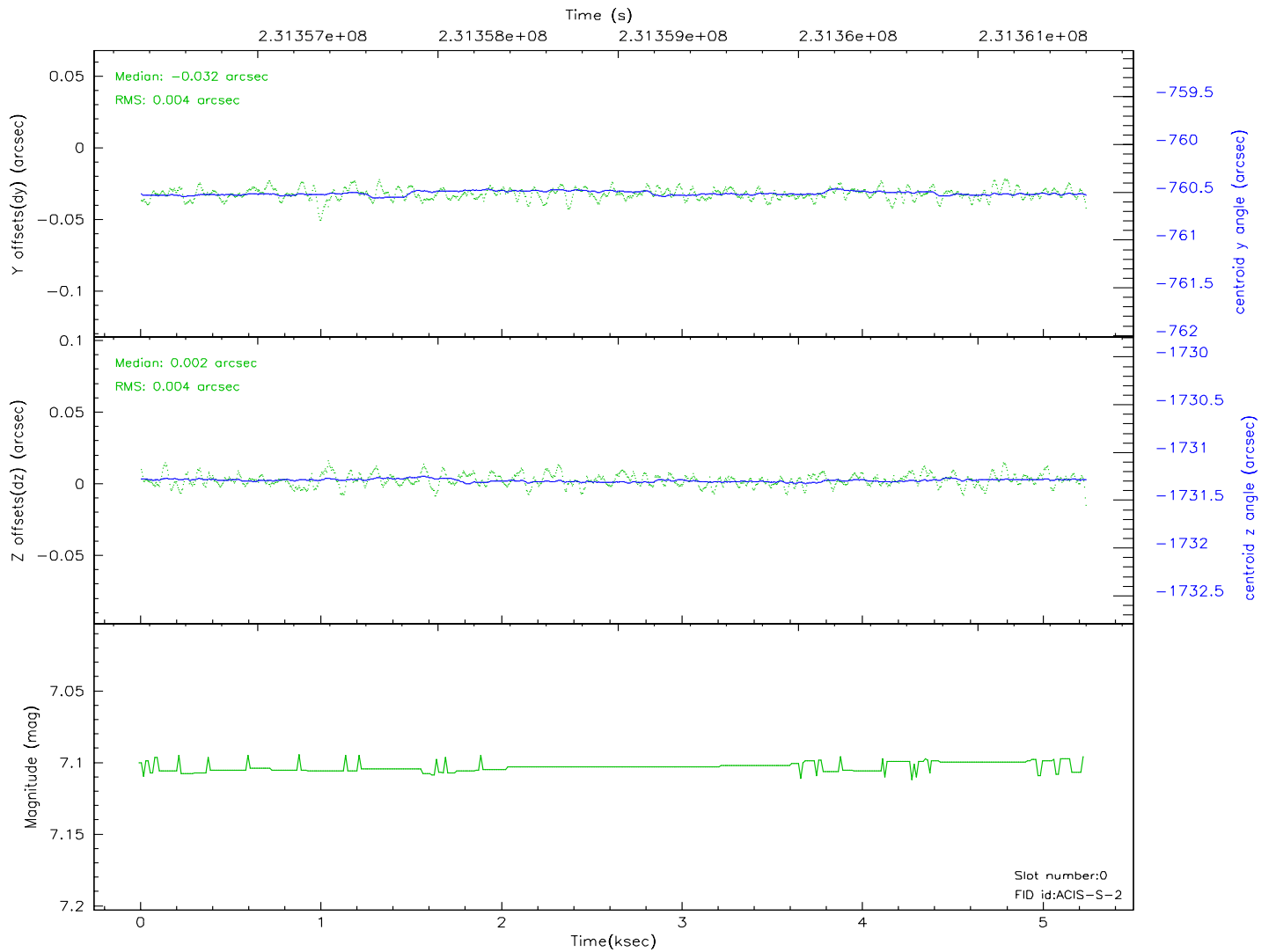
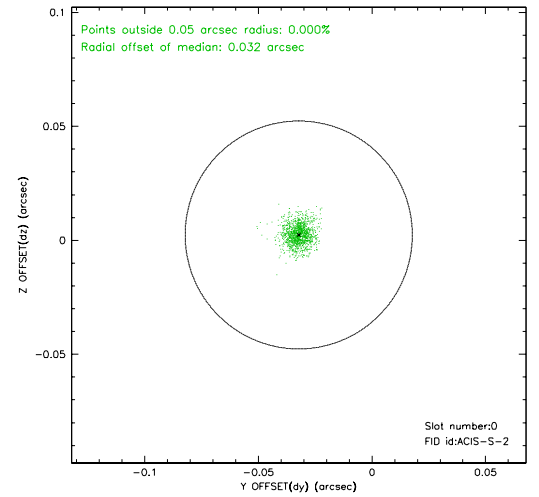
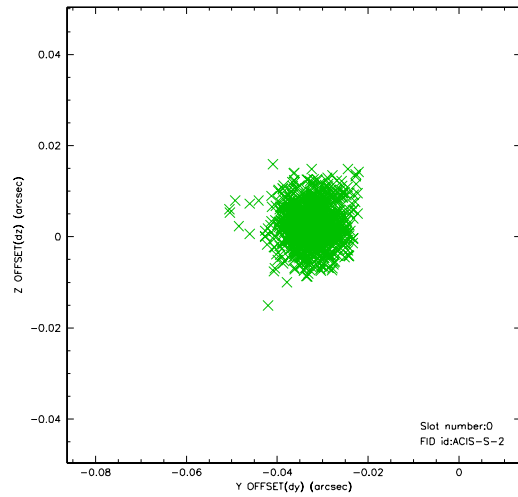


2.4.5 Slot 7

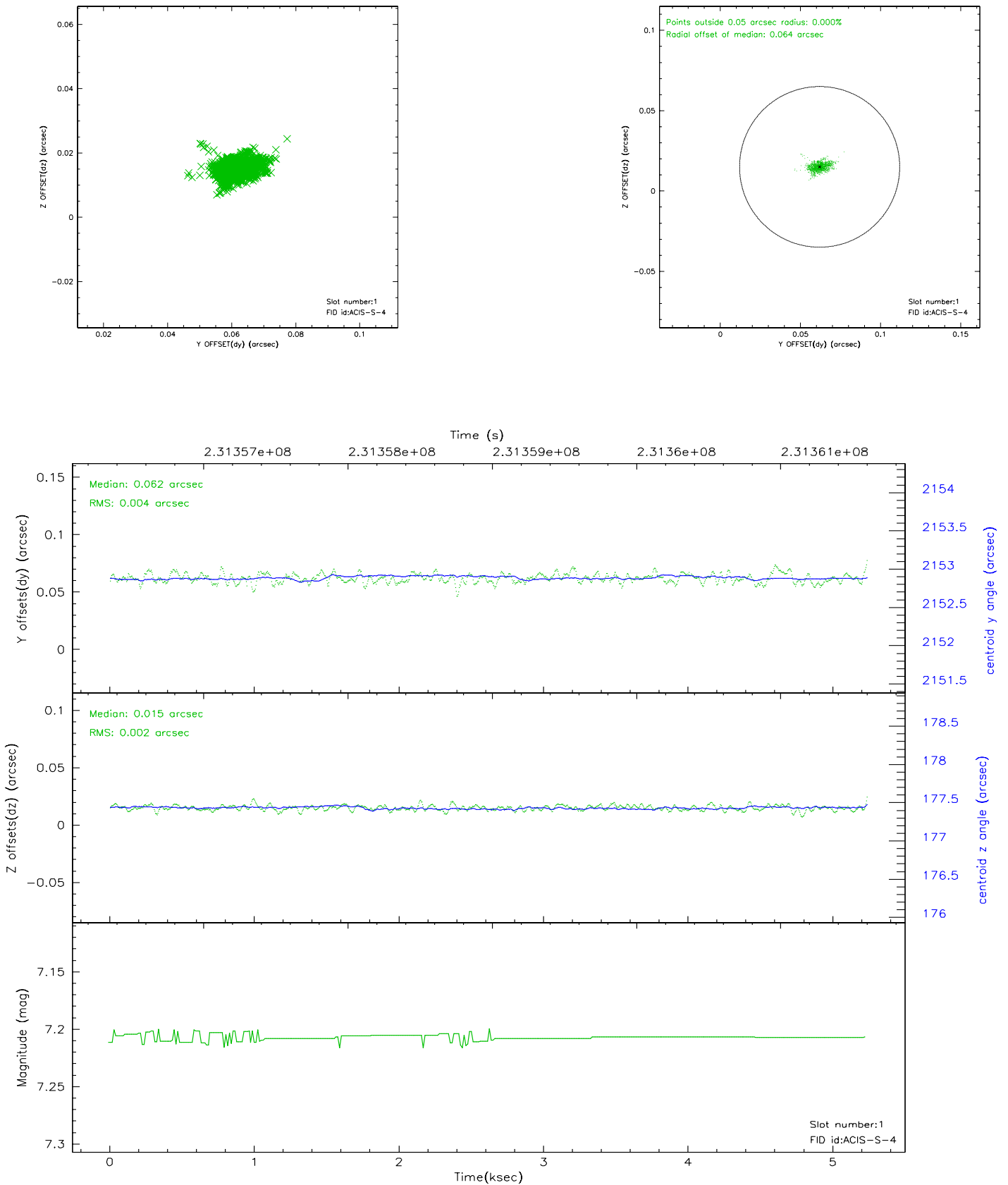


2.5 FID Slots

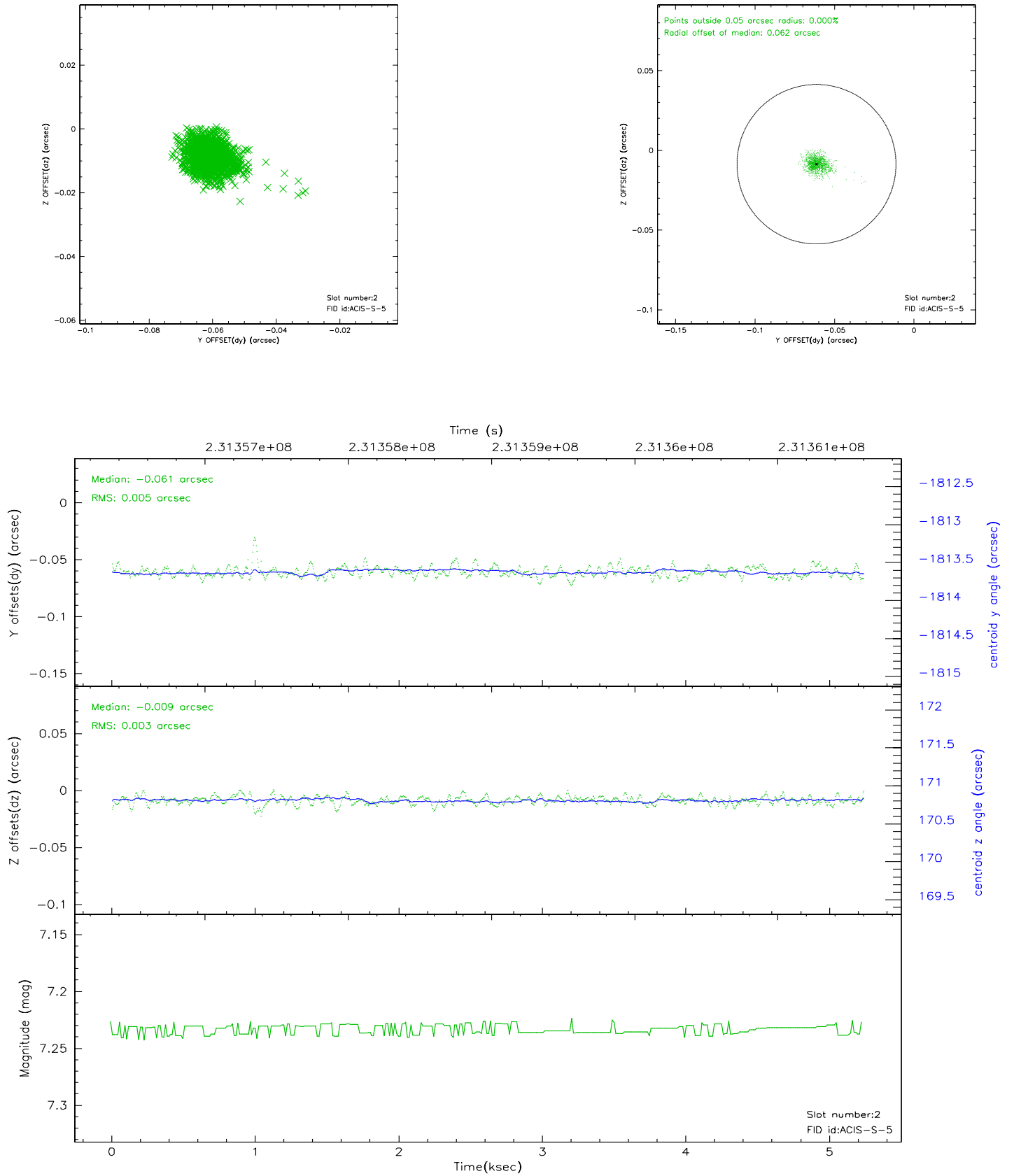
2.5.1 Slot 0



2.5.2 Slot 1



2.5.3 Slot 2



3 Point Sources

A Summary

A.1 Status

V&V Scientist	Beth Sundheim
V&V Date (YYYY-MM-DD)	2006.03.02
V&V Edition	1
V&V Disposition and Status	OK
V&V Charge Time	4.749199

A.2 Comments