

# V&V Reference Report

## L2 ASCDS Version : 8.4.3

Observation 55375 - L2 Version 2  
Chandra X-Ray Center

L2 Processing Date : Feb 11 2012

## Contents

<b>1</b>	<b>Front</b>	<b>2</b>
<b>2</b>	<b>OBI</b>	<b>3</b>
2.1	OBI . . . . .	3
2.1.1	Images . . . . .	3
2.1.2	Bias . . . . .	3
2.1.3	Parameters . . . . .	4
2.1.4	Events . . . . .	4
2.2	Compared Parameters . . . . .	5
2.3	Star Slots . . . . .	6
2.4	FID Slots . . . . .	6
<b>A</b>	<b>Summary</b>	<b>7</b>
A.1	Status . . . . .	7
A.2	Comments . . . . .	7

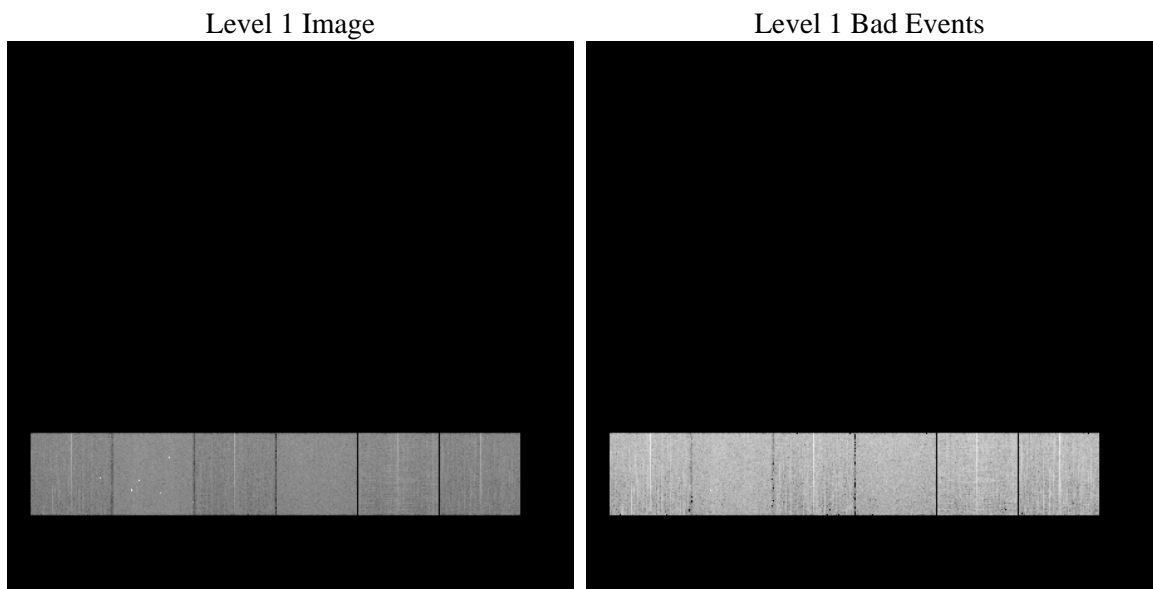
# 1 Front

seq_num	&#160	Sequence number
obs_id	55375	Observation id
title	ACIS-456789 diagnostics	Proposal title
observer	CHANDRA engineering request/realtime commanding	Principal investig
object	&#160	Source name
dtcycle	0	&#160
cycle	P	events from which exps? Prim/Second/Both
ra_targ	0.0	Observer's specified target RA [deg]
dec_targ	0.0	Observer's specified target Dec [deg]
ra_nom	245.04052807589	Nominal RA [deg]
dec_nom	-45.994489206693	Nominal Dec [deg]
roll_nom	338.16134106778	Nominal Roll [deg]
revision	2	Processing version of data
ontime	8233.5999693871	Sum of GTIs [s]
livetime	8129.341168896	Livetime [s]
ontime4	8233.5971149206	Sum of GTIs [s]
ontime5	8233.5999693871	Sum of GTIs [s]
ontime6	8233.5999693871	Sum of GTIs [s]
ontime7	8233.5999693871	Sum of GTIs [s]
ontime8	8233.5560749173	Sum of GTIs [s]
ontime9	8233.5999693871	Sum of GTIs [s]
l2events	337919	Number of level 2 events

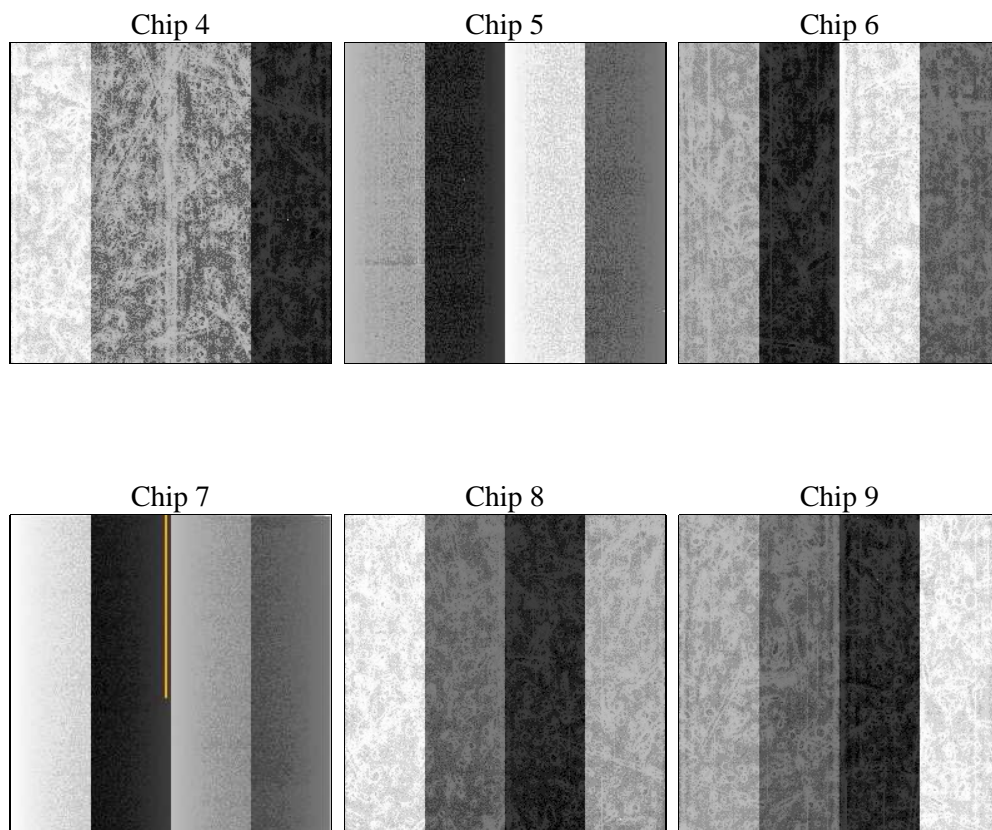
## 2 OBI

### 2.1 OBI

#### 2.1.1 Images



#### 2.1.2 Bias



### 2.1.3 Parameters

obi_num	0	Obi number	sched_exp_time	0.0	[s] Scheduled observation exposure time
ascdsver	8.4.3	Processing system revision	ontime	8233.5999693871	Sum of GTIs [s]
caldsver	4.4.7	&#160	ontime4	8233.5971149206	Sum of GTIs [s]
date	2012-02-11T19:53:40	Date and time of file creation	ontime5	8233.5999693871	Sum of GTIs [s]
revision	2	Processing version of data	ontime6	8233.5999693871	Sum of GTIs [s]
			ontime7	8233.5999693871	Sum of GTIs [s]
			ontime8	8233.5560749173	Sum of GTIs [s]
			ontime9	8233.5999693871	Sum of GTIs [s]
			l1events	753453	Number of level 1 events

### 2.1.4 Events

	ccd 4	ccd 5	ccd 6	ccd 7	ccd 8	ccd 9		ccd 4	ccd 5	ccd 6	ccd 7	ccd 8	ccd 9
level 1 events	114122	147078	110776	137230	131101	113146	grade 0 events	29222	14888	26550	13377	30246	25999
rejected events	64257	61530	59807	59229	67660	63761		25%	10%	23%	9%	23%	22%
rejected %	56%	41%	53%	43%	51%	56%	grade 1 events	246	333	140	122	190	192
								0%	0%	0%	0%	0%	0%
							grade 2 events	7743	29351	9320	17181	12158	8656
								6%	19%	8%	12%	9%	7%
							grade 3 events	3338	3241	3464	7058	4875	3465
								2%	2%	3%	5%	3%	3%
							grade 4 events	3408	3164	3272	6828	4631	3343
								2%	2%	2%	4%	3%	2%
							grade 5 events	3587	7562	3670	9041	4781	3976
								3%	5%	3%	6%	3%	3%
							grade 6 events	6460	35394	8672	34050	11978	8203
								5%	24%	7%	24%	9%	7%
							grade 7 events	60118	53145	55688	49573	62242	59312
								52%	36%	50%	36%	47%	52%

## 2.2 Compared Parameters

Parameter	Planned	Actual
Instrument	ACIS	ACIS
Detector	ACIS-456789	ACIS-456789
Grating	NONE	NONE
Data mode	FAINT	FAINT
Observation mode	SECONDARY	SECONDARY
[deg] Pointing RA	0	245.0405280758906
[deg] Pointing Dec	0	-45.99448920669256
[deg] Pointing Roll	0.0	338.1613410677767
[mm] SIM focus pos	-1.4281808131	-1.4281808131
[mm] SIM defocus	0.1051557500557434	0.1051557500557434
[mm] SIM translation stage pos	250.4660330802	250.4660330802
[mm] SIM translation stage offset	-0.01005726120527584	-0.01005726120527584
[s] Observation start time (MET)	423803487.16366	423803487.16366
Observation start date	2011-06-07T03:11:27	2011-06-07T03:11:27
[s] Observation end time (MET)	423813036.738517	423813036.738517
Observation end date	2011-06-07T05:50:37	2011-06-07T05:50:36
Read mode	TIMED	TIMED

Parameter	Planned	Actual
Obspar format version number	7	7
Obspar file type	PREDICTED	ACTUAL
Obspar update status	OVERRIDE	OVERRIDE
Number of optional ACIS chips dropped	0	0
On-chip summing requested	N	N
Subarray requested	NONE	NONE
Alternating exposures requested	N	N
[s] Primary exposure time	3.2	3.2

## 2.3 Star Slots

## 2.4 FID Slots

## A Summary

### A.1 Status

V&V Scientist	Beth Sundheim
V&V Date (YYYY-MM-DD)	2012.02.14
V&V Edition	1
V&V Disposition and Status	OK
V&V Charge Time	8.2335999693871

### A.2 Comments