

# V&V Reference Report

## L2 ASCDS Version : 8.4.3

Observation 5495 - L2 Version 2  
Chandra X-Ray Center

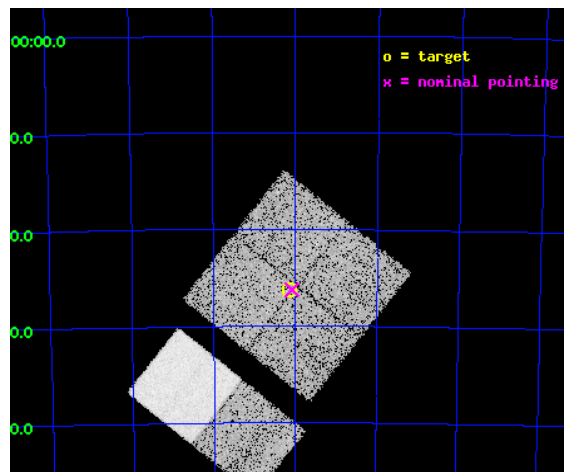
L2 Processing Date : Mar 27 2012

## Contents

<b>1</b>	<b>Front</b>	<b>2</b>
<b>2</b>	<b>OBI</b>	<b>3</b>
2.1	OBI . . . . .	3
2.1.1	Images . . . . .	3
2.1.2	Bias . . . . .	3
2.1.3	Parameters . . . . .	4
2.1.4	Events . . . . .	4
2.2	Compared Parameters . . . . .	5
2.3	Aspect . . . . .	6
2.4	Star Slots . . . . .	9
2.4.1	Slot 3 . . . . .	9
2.4.2	Slot 4 . . . . .	10
2.4.3	Slot 5 . . . . .	11
2.4.4	Slot 6 . . . . .	12
2.4.5	Slot 7 . . . . .	13
2.5	FID Slots . . . . .	14
2.5.1	Slot 0 . . . . .	14
2.5.2	Slot 1 . . . . .	15
2.5.3	Slot 2 . . . . .	16
<b>A</b>	<b>Summary</b>	<b>17</b>
A.1	Status . . . . .	17
A.2	Comments . . . . .	17

# 1 Front

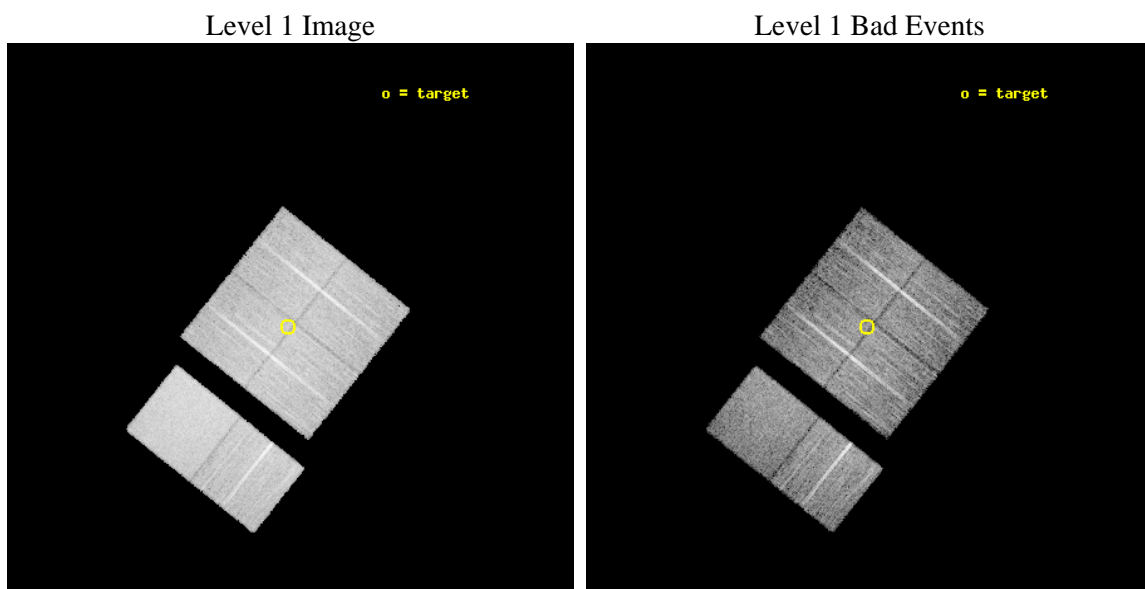
seq_num	400425	Sequence number
obs_id	5495	Observation id
title	Discovering X-ray pulsars in the Wing of the Small Magellanic Cloud	&#160
observer	Prof Malcolm Coe	Principal investigator
object	SMCwing 16	Source name
dtcycle	0	&#160
cycle	P	events from which exps? Prim/Second/Both
ra_targ	18.0375	Observer's specified target RA [deg]
dec_targ	-73.436111	Observer's specified target Dec [deg]
ra_nom	18.021784027458	Nominal RA [deg]
dec_nom	-73.437314839072	Nominal Dec [deg]
roll_nom	218.59098355547	Nominal Roll [deg]
revision	2	Processing version of data
ontime	9753.599963665	Sum of GTIs [s]
livetime	9630.0940080123	Livetime [s]
ontime0	9753.599963665	Sum of GTIs [s]
ontime1	9753.599963665	Sum of GTIs [s]
ontime2	9753.599963665	Sum of GTIs [s]
ontime3	9753.599963665	Sum of GTIs [s]
ontime6	9753.599963665	Sum of GTIs [s]
ontime7	9753.599963665	Sum of GTIs [s]
l2events	89698	Number of level 2 events



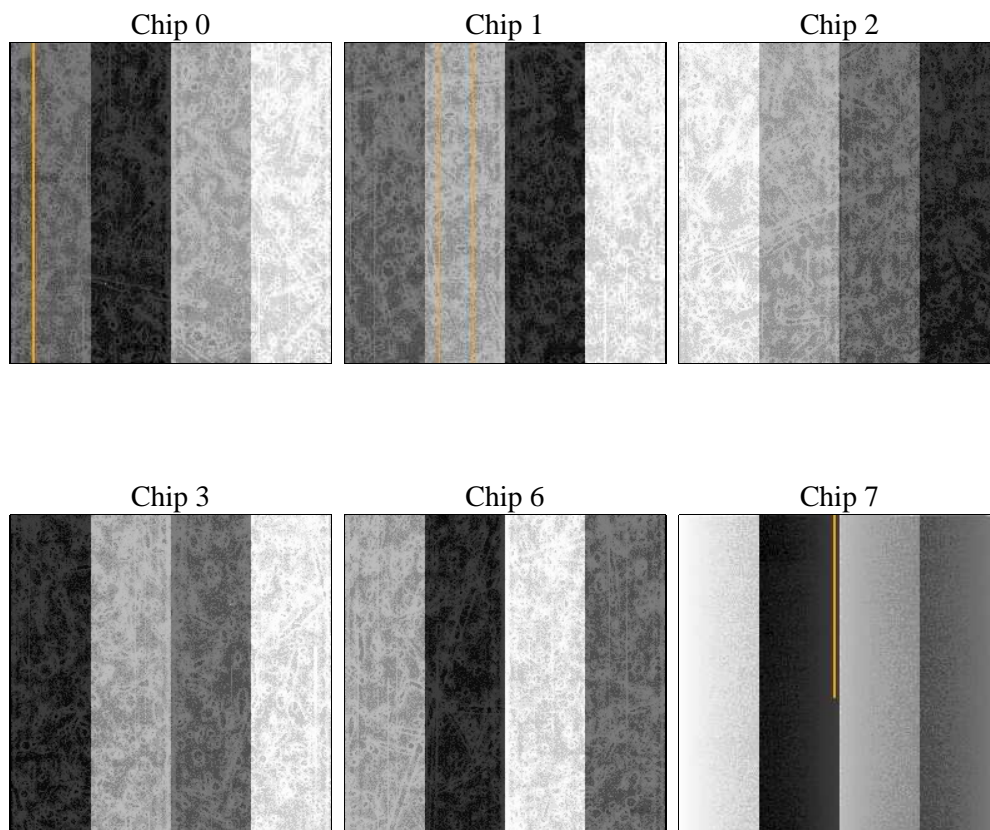
## 2 OBI

### 2.1 OBI

#### 2.1.1 Images



#### 2.1.2 Bias



### 2.1.3 Parameters

obi_num	0	Obi number	sched_exp_time	10000.000000	[s] Scheduled observation exposure time
ascdsver	8.4.3	Processing system revision	ontime	9753.599963665	Sum of GTIs [s]
caldsver	4.4.8	&#160	ontime0	9753.599963665	Sum of GTIs [s]
date	2012-03-27T03:26:38	Date and time of file creation	ontime1	9753.599963665	Sum of GTIs [s]
revision	2	Processing version of data	ontime2	9753.599963665	Sum of GTIs [s]
			ontime3	9753.599963665	Sum of GTIs [s]
			ontime6	9753.599963665	Sum of GTIs [s]
			ontime7	9753.599963665	Sum of GTIs [s]
			l1events	515799	Number of level 1 events

### 2.1.4 Events

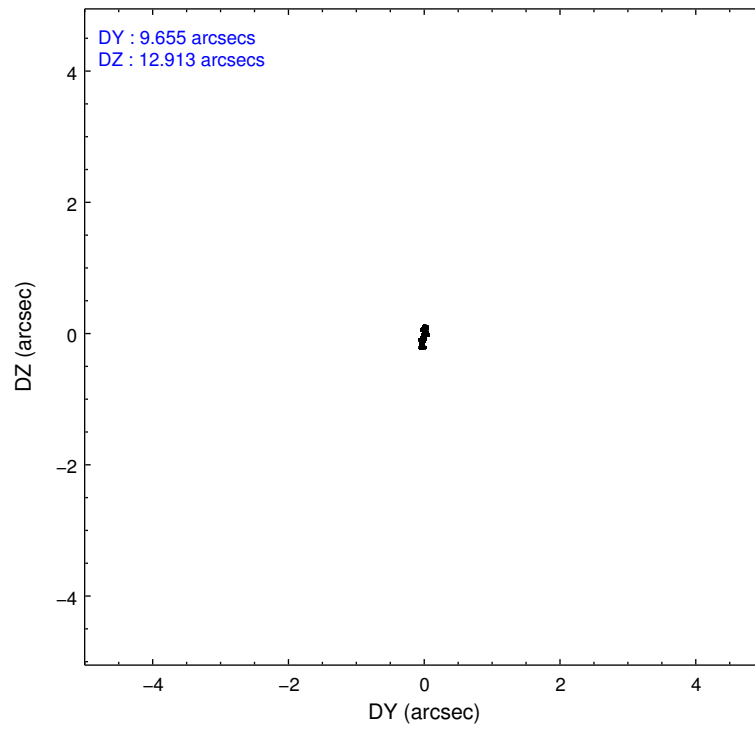
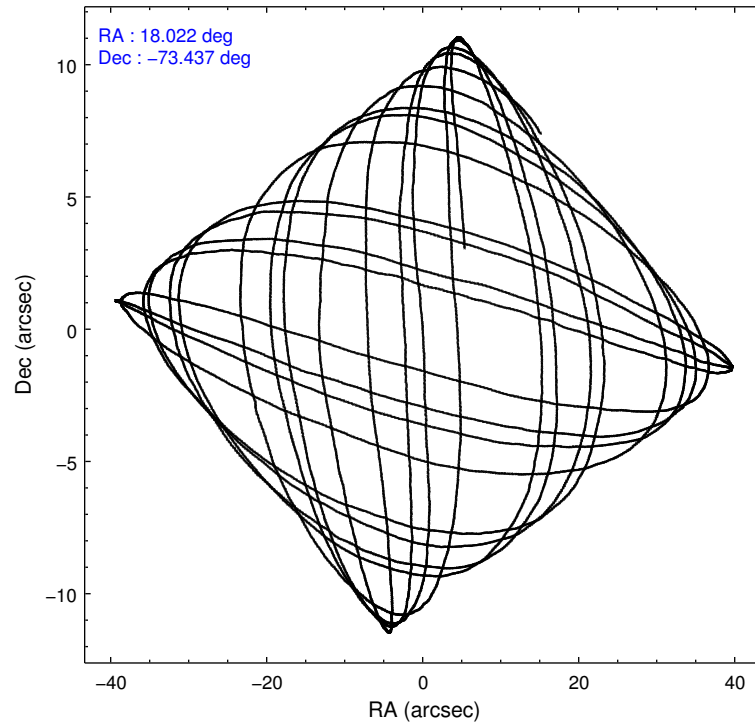
	ccd 0	ccd 1	ccd 2	ccd 3	ccd 6	ccd 7		ccd 0	ccd 1	ccd 2	ccd 3	ccd 6	ccd 7
level 1 events	74744	76735	84886	79644	85789	114001	grade 0 events	4172	4099	4404	4367	3961	4210
rejected events	64765	66171	74982	69776	75669	66647		5%	5%	5%	5%	4%	3%
rejected %	86%	86%	88%	87%	88%	58%	grade 1 events	38	42	53	62	44	119
								0%	0%	0%	0%	0%	0%
							grade 2 events	2212	2368	1967	1895	2130	9427
								2%	3%	2%	2%	2%	8%
							grade 3 events	959	1006	917	940	1003	4124
								1%	1%	1%	1%	1%	3%
							grade 4 events	919	999	934	1003	947	4234
								1%	1%	1%	1%	1%	3%
							grade 5 events	3281	3514	3050	3796	3849	10948
								4%	4%	3%	4%	4%	9%
							grade 6 events	1725	2103	1688	1670	2081	25376
								2%	2%	1%	2%	2%	22%
							grade 7 events	61438	62604	71873	65911	71774	55563
								82%	81%	84%	82%	83%	48%

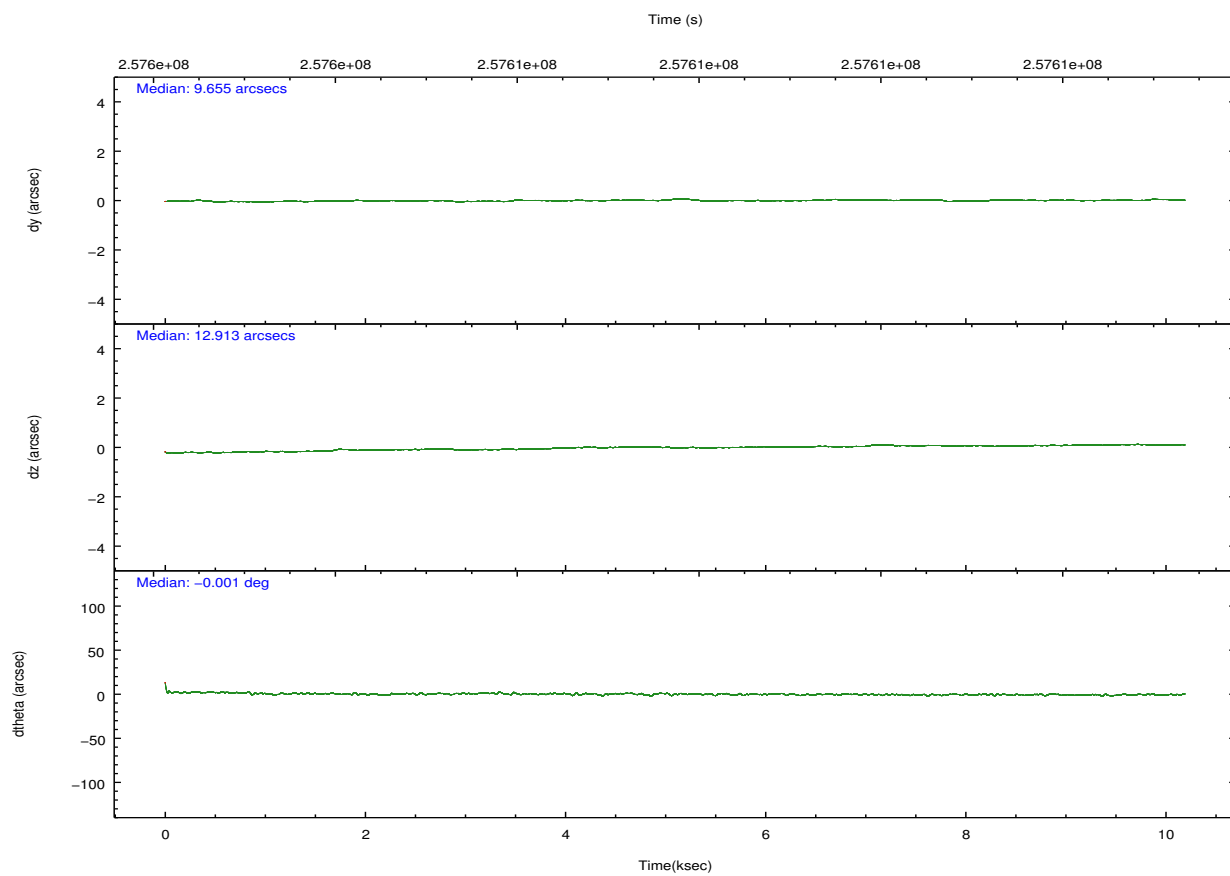
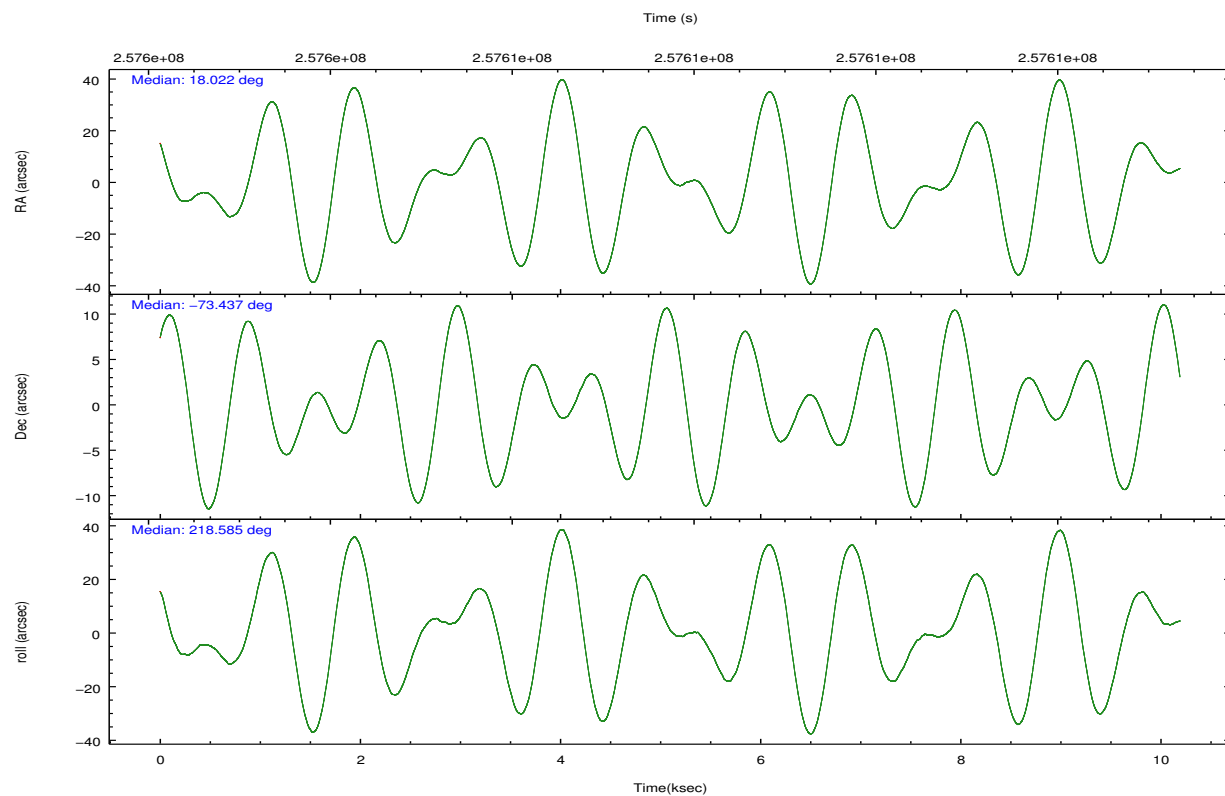


## 2.2 Compared Parameters

Parameter	Planned	Actual	Parameter	Planned	Actual
Instrument	ACIS	ACIS	Obspar format version number	7	7
Detector	ACIS-012367	ACIS-012367	Obspar file type	PREDICTED	ACTUAL
Grating	NONE	NONE	Obspar update status	NONE	UPDATED
Data mode	FAINT	FAINT	Number of optional ACIS chips dropped	0	0
Observation mode	POINTING	POINTING	On-chip summing requested	N	N
[deg] Pointing RA	18.056502	18.02178402745817	Subarray requested	NONE	NONE
[deg] Pointing Dec	-73.411807	-73.43731483907152	Alternating exposures requested	N	N
[deg] Pointing Roll	218.415574	218.5909835554668	[s] Primary exposure time	0.000000	3.2
[mm] SIM focus pos	-0.782348	-0.7809083437167272			
[mm] SIM defocus	0	0.001439871863259334			
[mm] SIM translation stage pos	-233.592463	-233.5874344608287			
[mm] SIM translation stage offset	0	-0.005018542100998502			
[s] Observation start time (MET)	257602829.184000	257602453.65451			
Observation start date	2006-03-01T12:19:24	2006-03-01T12:14:13			
[s] Observation end time (MET)	257612829.184000	257613689.19253			
Observation end date	2006-03-01T15:06:04	2006-03-01T15:21:29			
Read mode	TIMED	TIMED			

## 2.3 Aspect



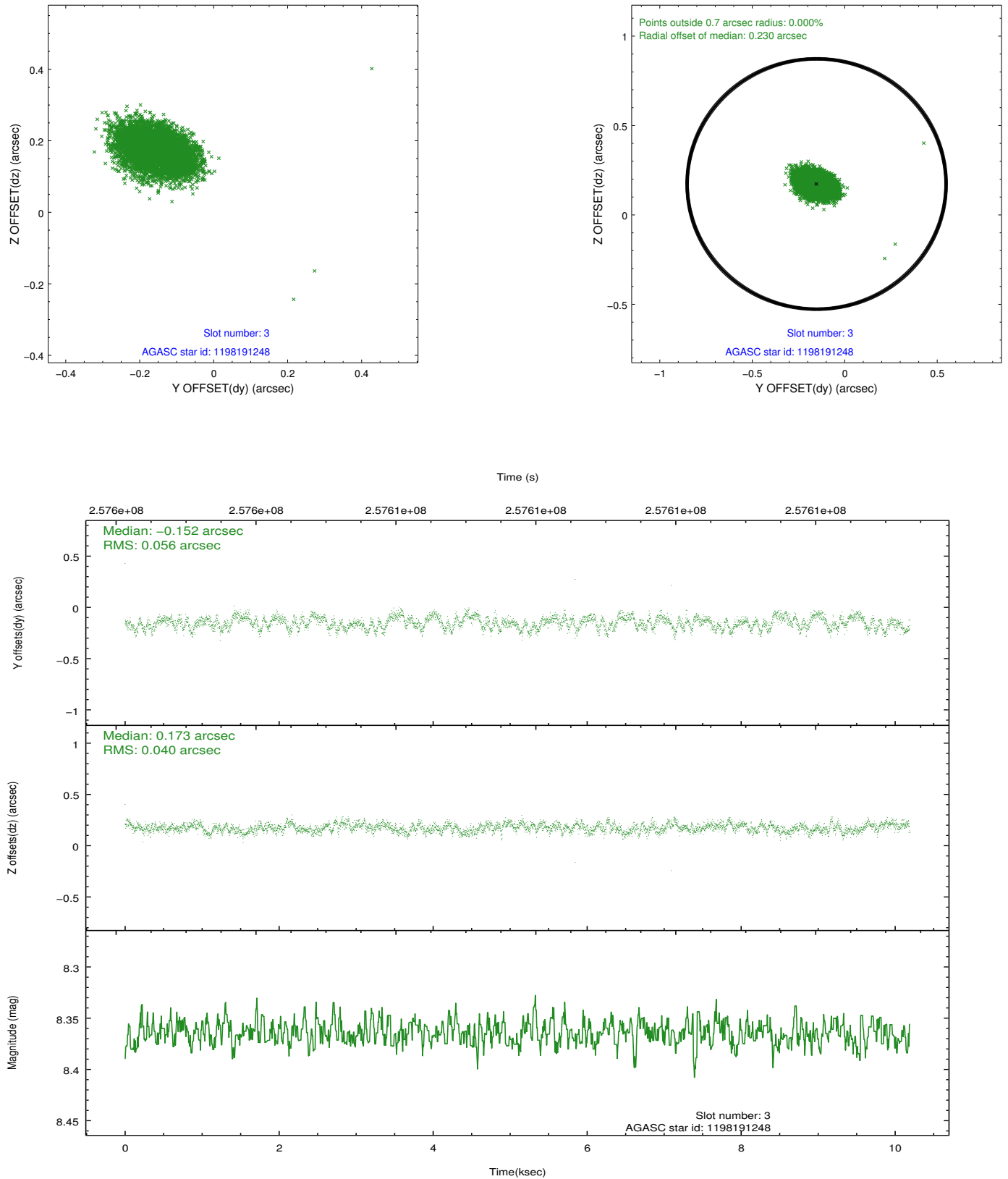


### Slot Statistics

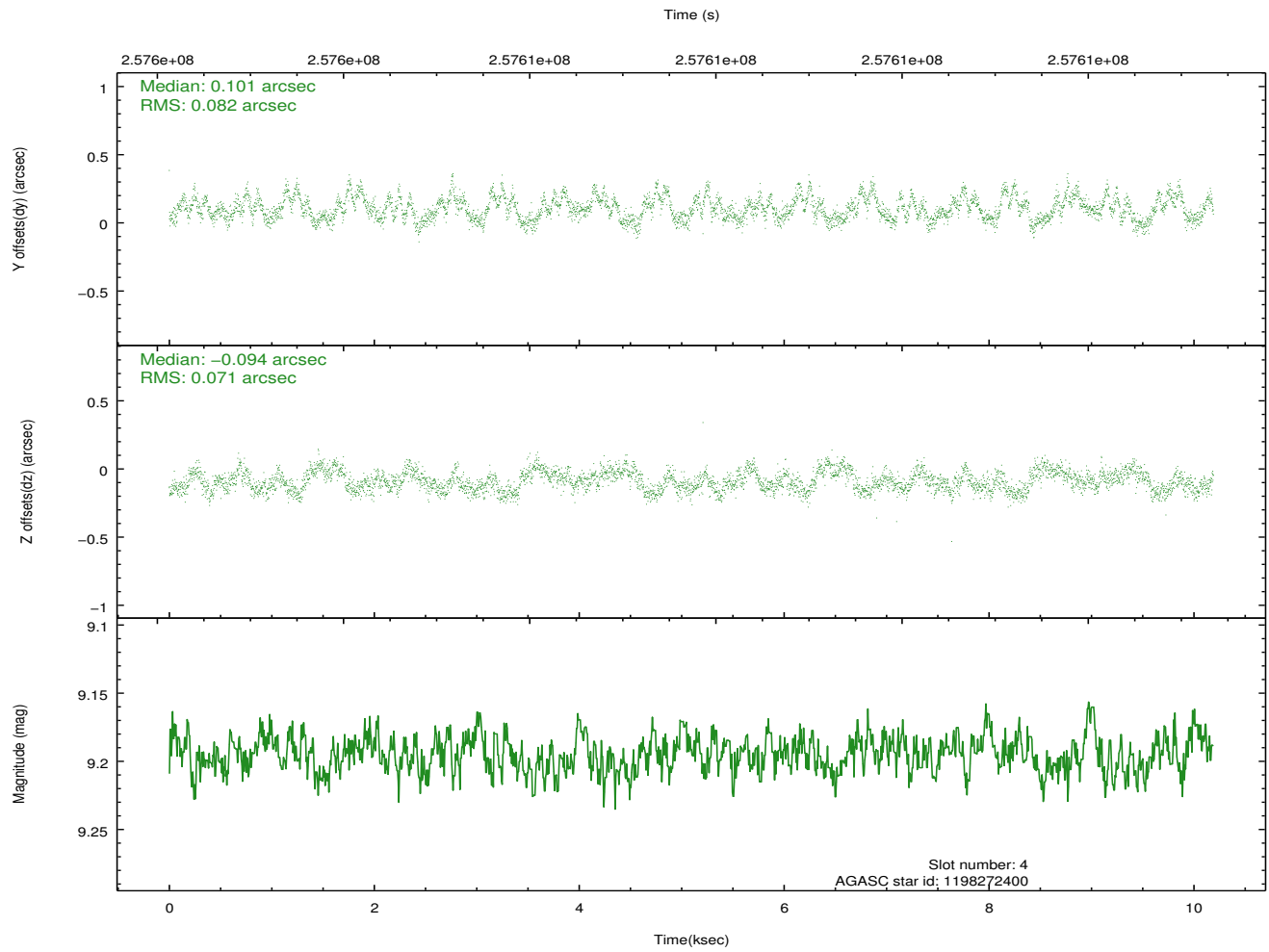
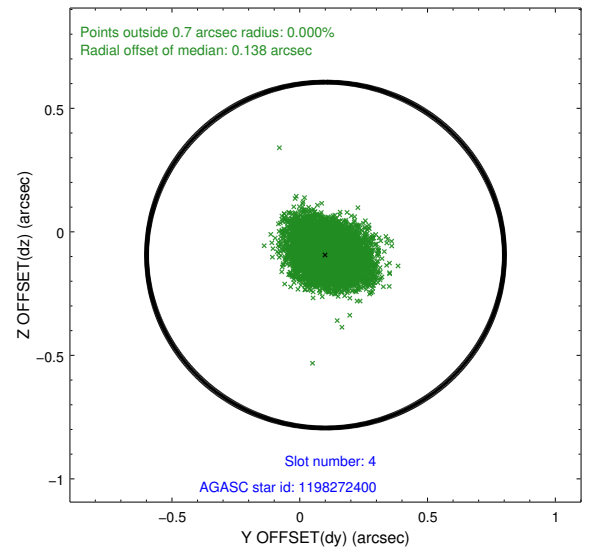
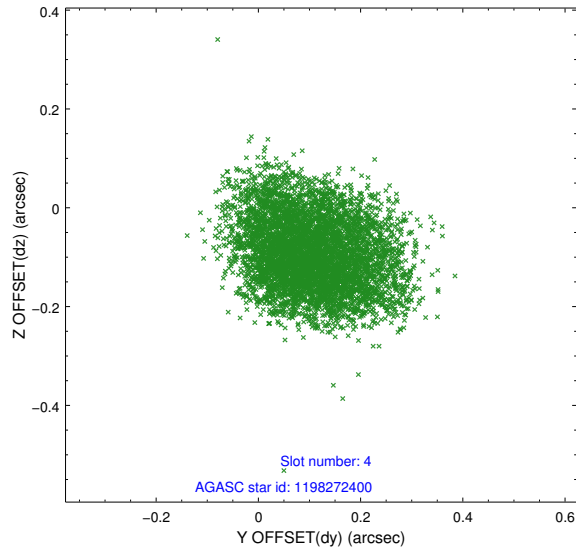
slot	status	id	mag	n_pts	med_dy	med_dz	dr1	dr2	ra	dec	mean_y	mean_z
0	FID	ACIS-I-2	7.13	2486	-0.094	-0.084	0.010	0.016	0.000000	0.000000	-764.33	-842.87
1	FID	ACIS-I-4	7.17	2486	0.188	0.079	0.006	0.011	0.000000	0.000000	2149.81	1063.15
2	FID	ACIS-I-5	7.22	2486	-0.195	0.074	0.010	0.016	0.000000	0.000000	-1817.55	1061.66
3	GUIDE	1198191248	8.36	4972	-0.152	0.173	0.073	0.115	15.995132	-73.462457	1791.09	-1140.16
4	GUIDE	1198272400	9.19	4970	0.101	-0.094	0.117	0.183	20.411923	-73.620598	-1376.10	2111.20
5	GUIDE	1198273408	9.33	4968	0.054	-0.164	0.081	0.131	17.532323	-73.621495	887.50	263.42
6	GUIDE	1198282744	9.01	4971	0.055	0.129	0.086	0.141	17.028326	-73.013356	-37.39	-1787.87
7	GUIDE	1198282824	7.29	4971	-0.061	-0.046	0.050	0.081	18.044095	-73.907062	1117.20	1389.58

## 2.4 Star Slots

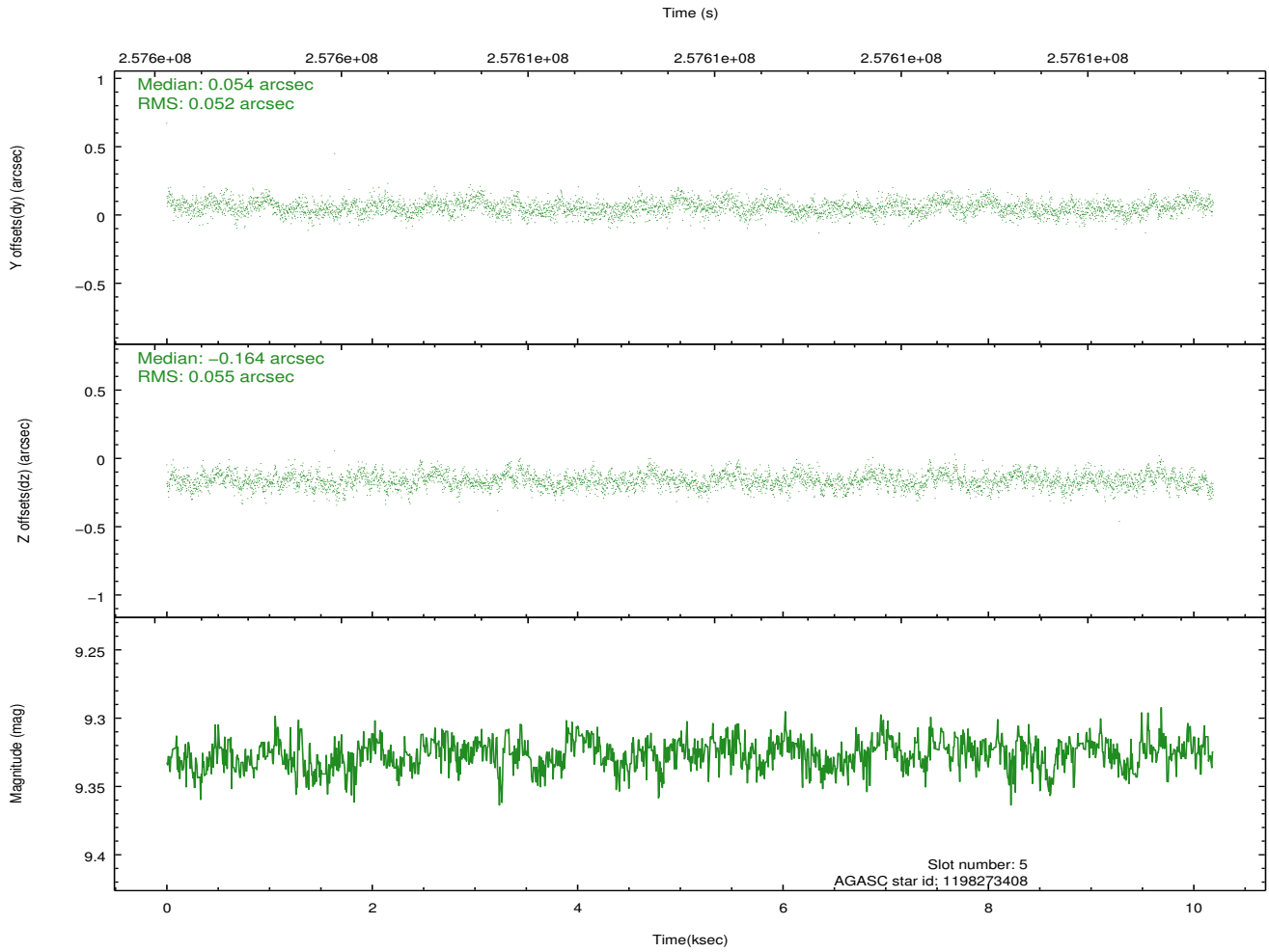
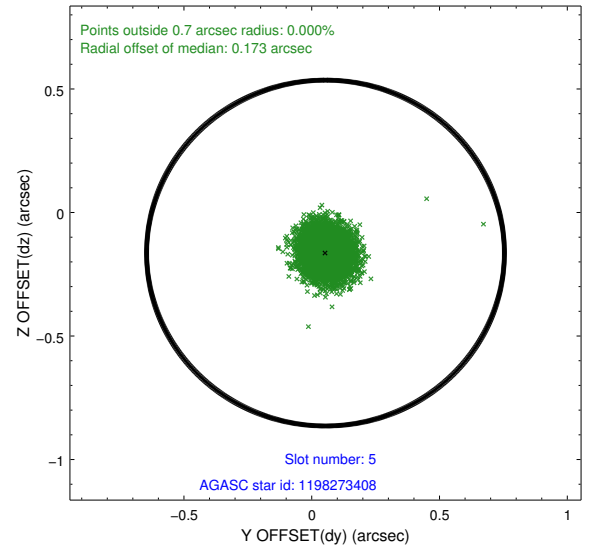
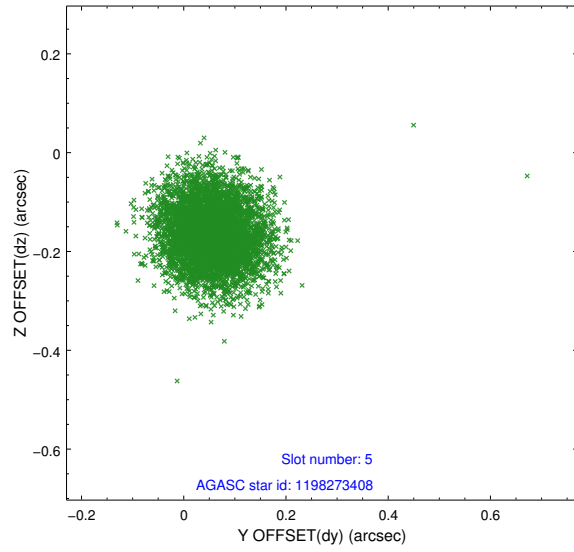
### 2.4.1 Slot 3



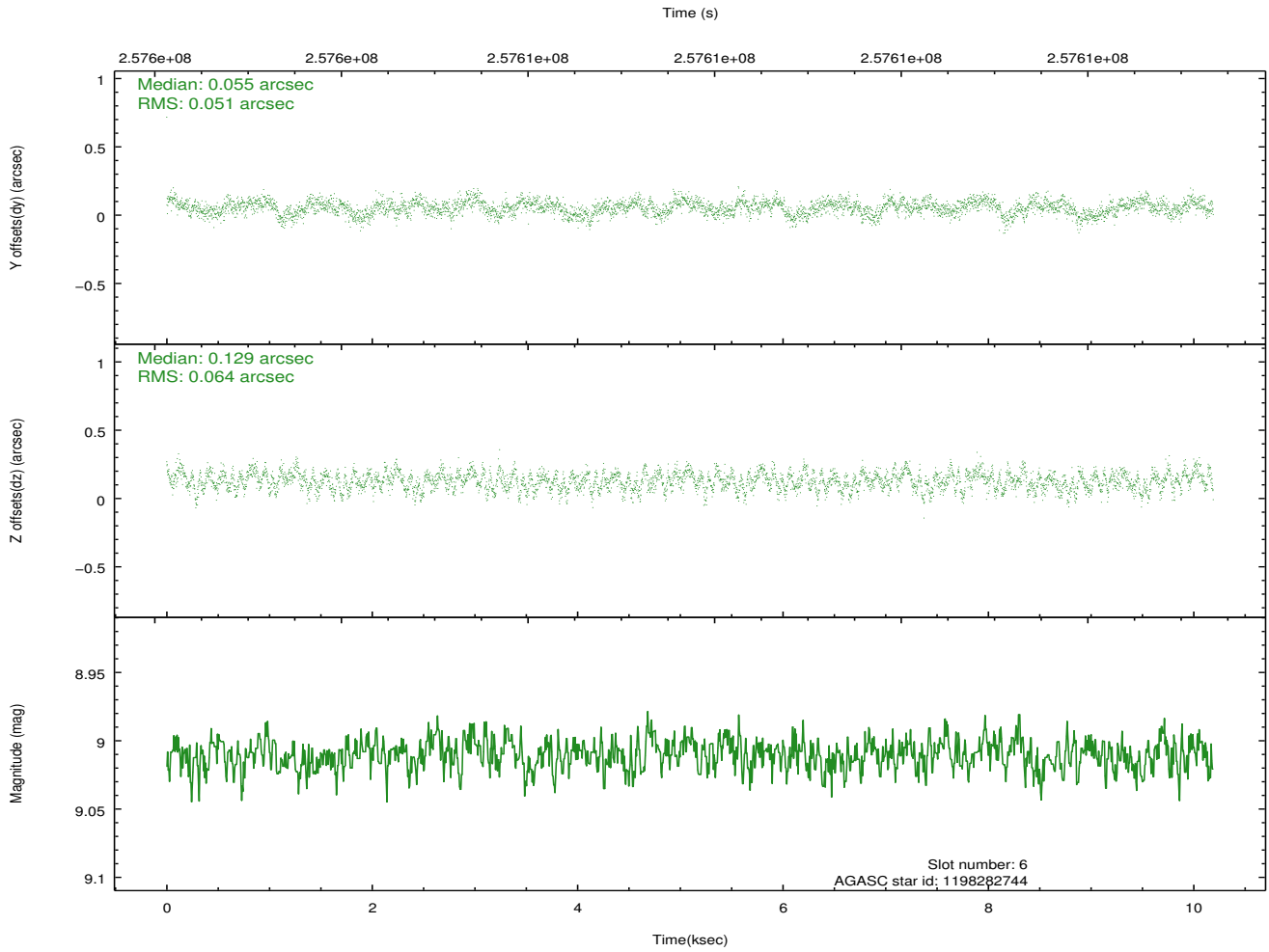
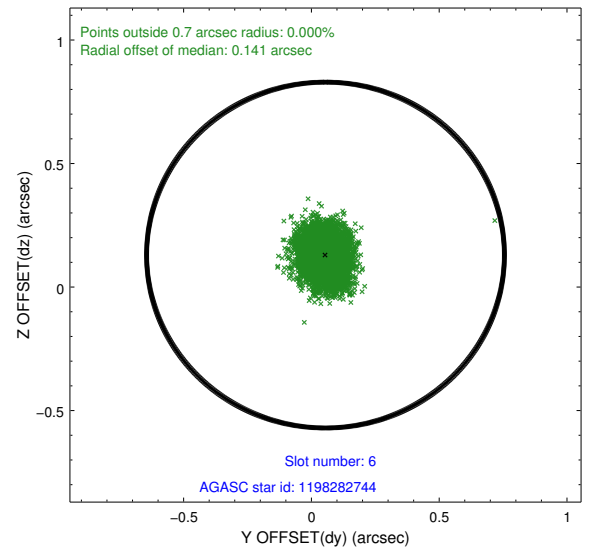
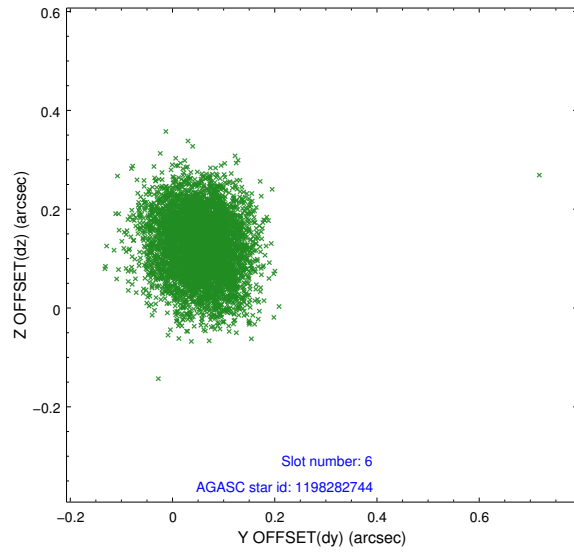
## 2.4.2 Slot 4



### 2.4.3 Slot 5

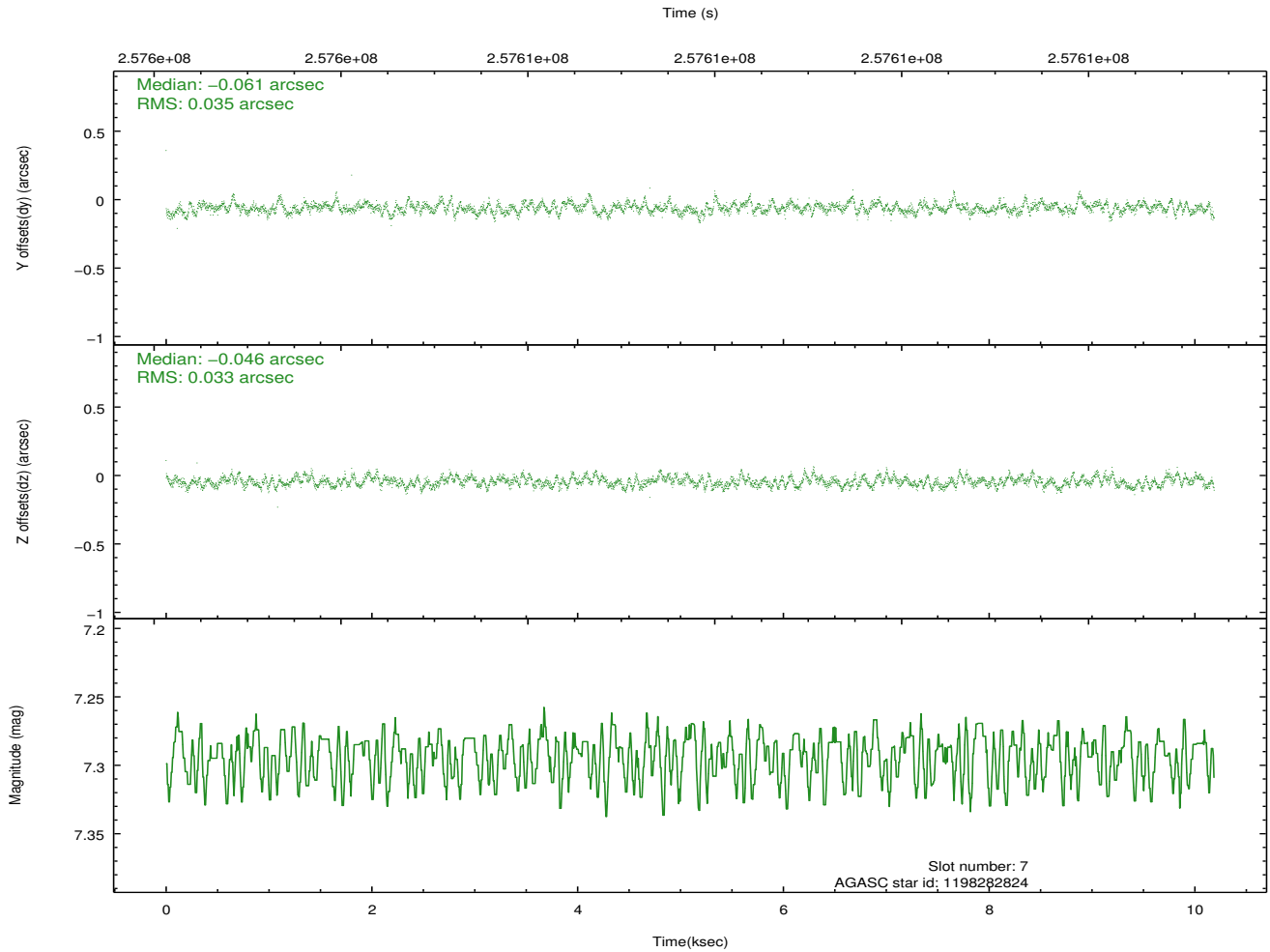
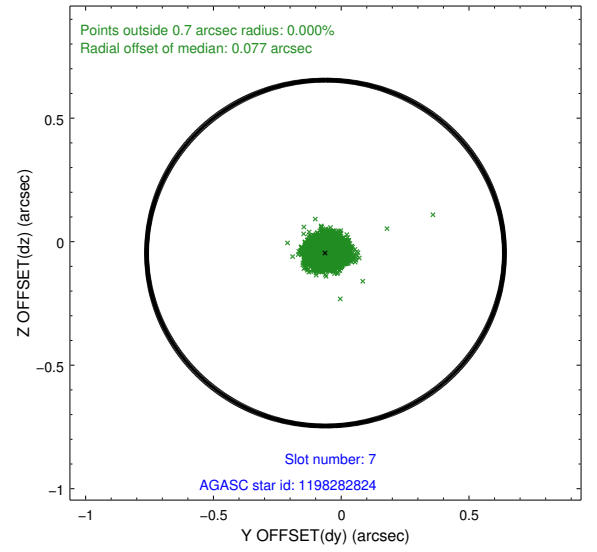
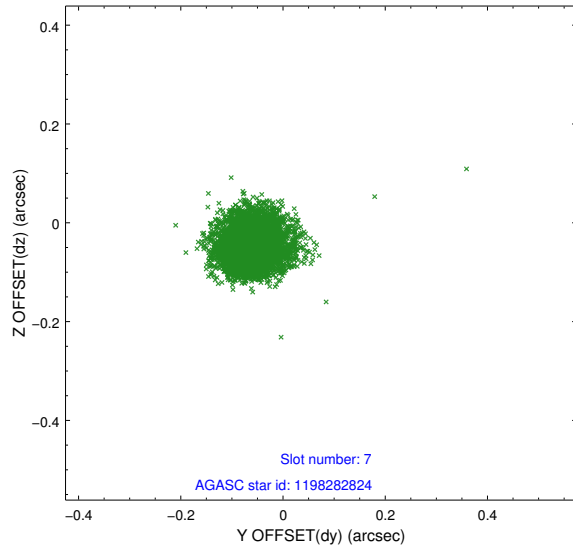


## 2.4.4 Slot 6



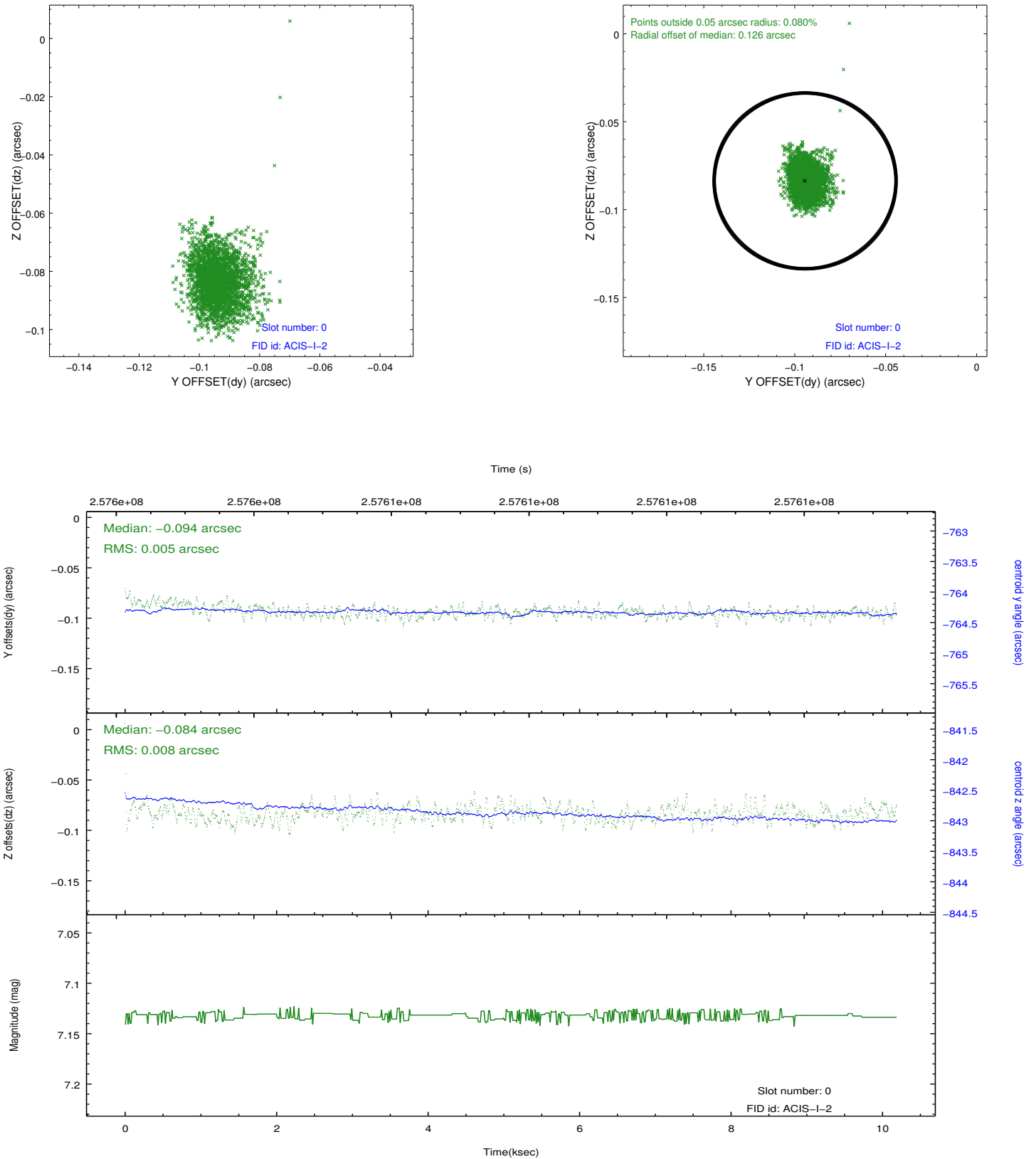


## 2.4.5 Slot 7

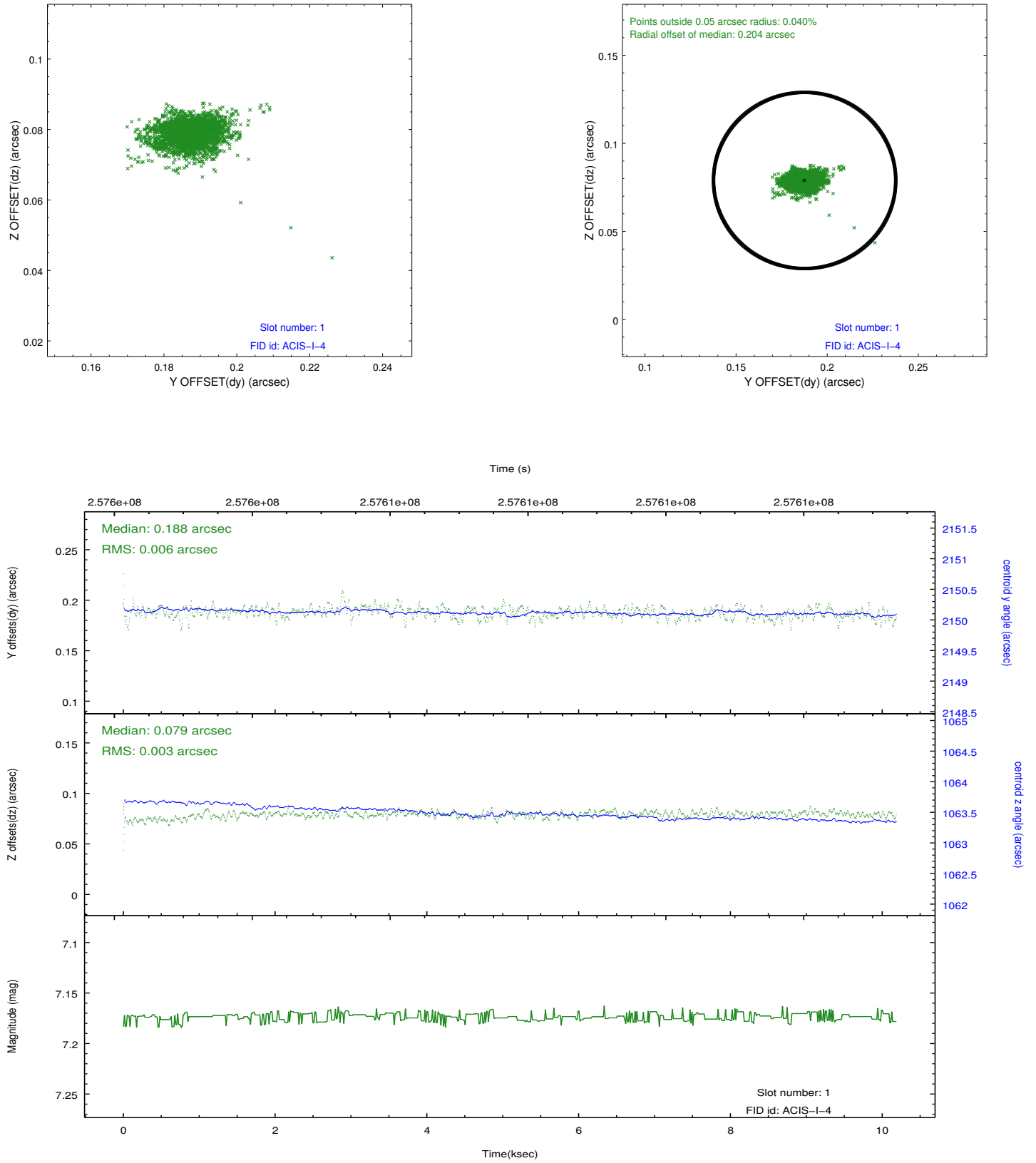


## 2.5 FID Slots

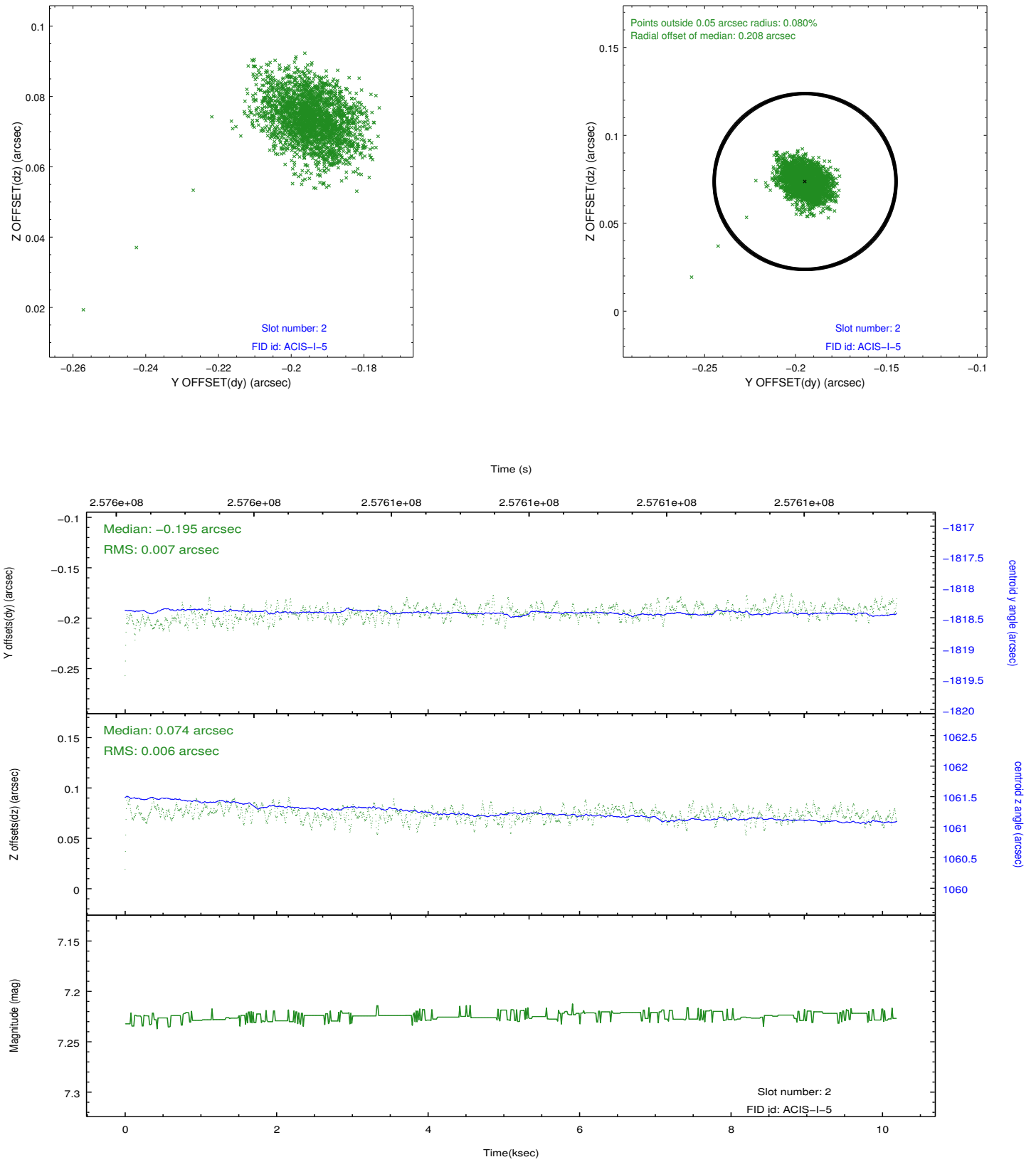
### 2.5.1 Slot 0



## 2.5.2 Slot 1



### 2.5.3 Slot 2



## A Summary

### A.1 Status

V&V Scientist	Jen Lauer
V&V Date (YYYY-MM-DD)	2012.03.28
V&V Edition	1
V&V Disposition and Status	OK
V&V Charge Time	9.75359996

### A.2 Comments