

V&V Reference Report

L2 ASCDS Version : 8.4.3

Observation 5485 - L2 Version 2
Chandra X-Ray Center

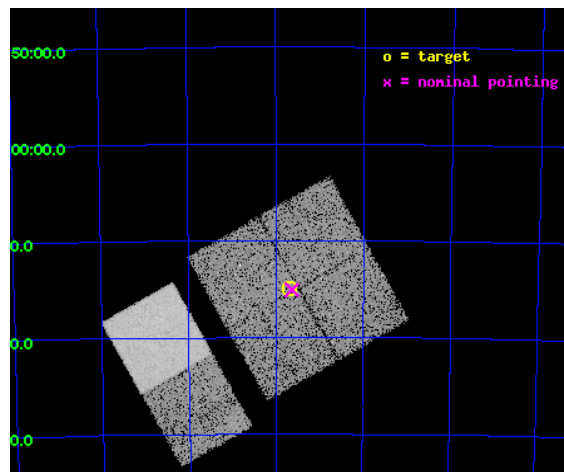
L2 Processing Date : Mar 25 2012

Contents

1	Front	2
2	OBI	3
2.1	OBI	3
2.1.1	Images	3
2.1.2	Bias	3
2.1.3	Parameters	4
2.1.4	Events	4
2.2	Compared Parameters	5
2.3	Aspect	6
2.4	Star Slots	9
2.4.1	Slot 3	9
2.4.2	Slot 4	10
2.4.3	Slot 5	11
2.4.4	Slot 6	12
2.4.5	Slot 7	13
2.5	FID Slots	14
2.5.1	Slot 0	14
2.5.2	Slot 1	15
2.5.3	Slot 2	16
A	Summary	17
A.1	Status	17
A.2	Comments	17

1 Front

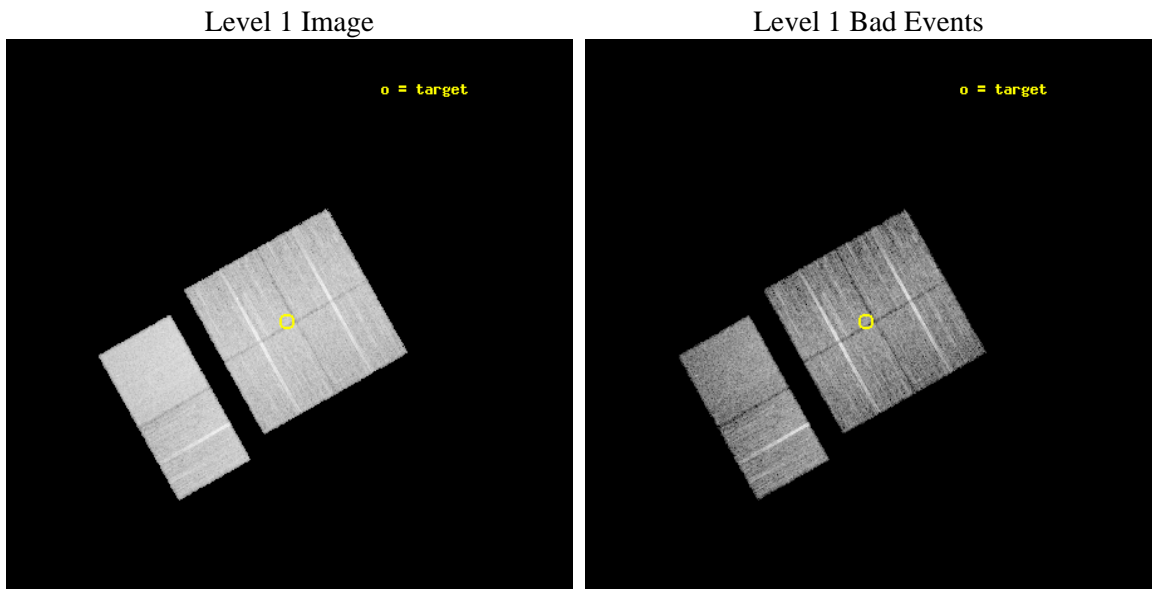
seq_num	400415	Sequence number
obs_id	5485	Observation id
title	Discovering X-ray pulsars in the Wing of the Small Magellanic Cloud	
observer	Prof Malcolm Coe	Principal investigator
object	SMCwing 6	Source name
dtcycle	0	
cycle	P	events from which exps? Prim/Second/Both
ra_targ	16.920833	Observer's specified target RA [deg]
dec_targ	-72.248333	Observer's specified target Dec [deg]
ra_nom	16.908909622953	Nominal RA [deg]
dec_nom	-72.251207562369	Nominal Dec [deg]
roll_nom	240.6374232386	Nominal Roll [deg]
revision	2	Processing version of data
ontime	10175.999962091	Sum of GTIs [s]
livetime	10047.14532332	Livetime [s]
ontime0	10175.999962091	Sum of GTIs [s]
ontime1	10175.999962091	Sum of GTIs [s]
ontime2	10175.999962091	Sum of GTIs [s]
ontime3	10175.999962091	Sum of GTIs [s]
ontime6	10172.759001791	Sum of GTIs [s]
ontime7	10175.999962091	Sum of GTIs [s]
l2events	92194	Number of level 2 events



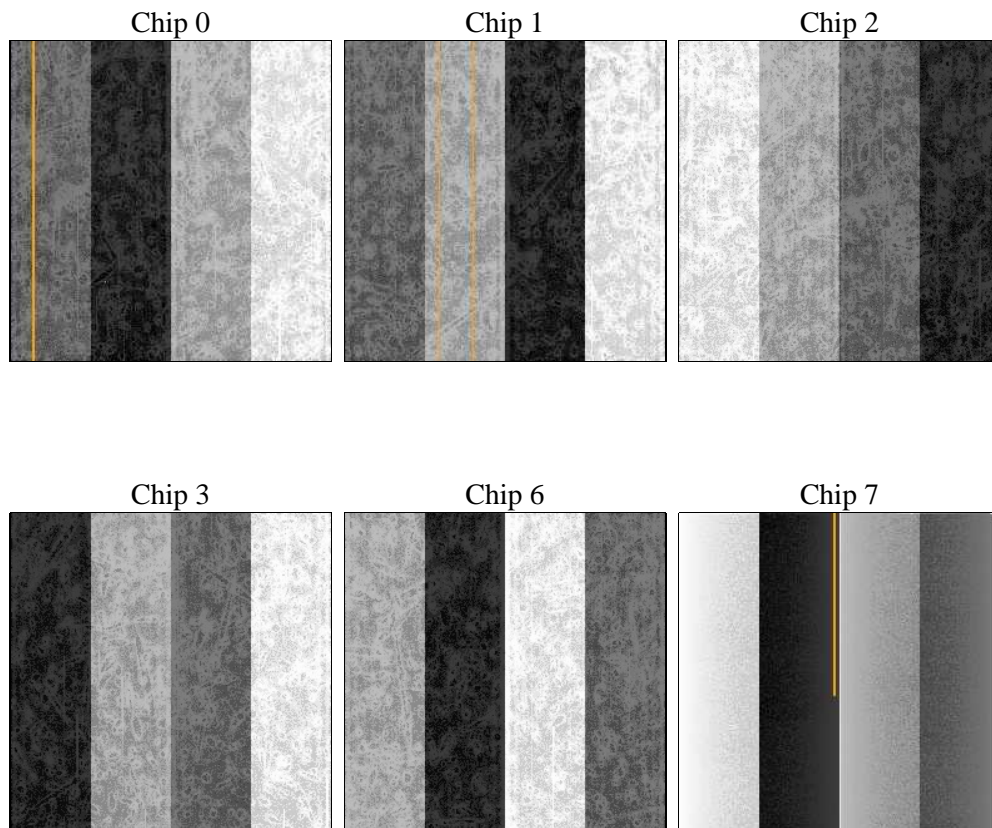
2 OBI

2.1 OBI

2.1.1 Images



2.1.2 Bias



2.1.3 Parameters

obi_num	0	Obi number	sched_exp_time	10000.000000	[s] Scheduled observation exposure time
ascdsver	8.4.3	Processing system revision	ontime	10175.999962091	Sum of GTIs [s]
caldsver	4.4.8	 	ontime0	10175.999962091	Sum of GTIs [s]
date	2012-03-25T02:04:26	Date and time of file creation	ontime1	10175.999962091	Sum of GTIs [s]
revision	2	Processing version of data	ontime2	10175.999962091	Sum of GTIs [s]
			ontime3	10175.999962091	Sum of GTIs [s]
			ontime6	10172.759001791	Sum of GTIs [s]
			ontime7	10175.999962091	Sum of GTIs [s]
			l1events	576988	Number of level 1 events

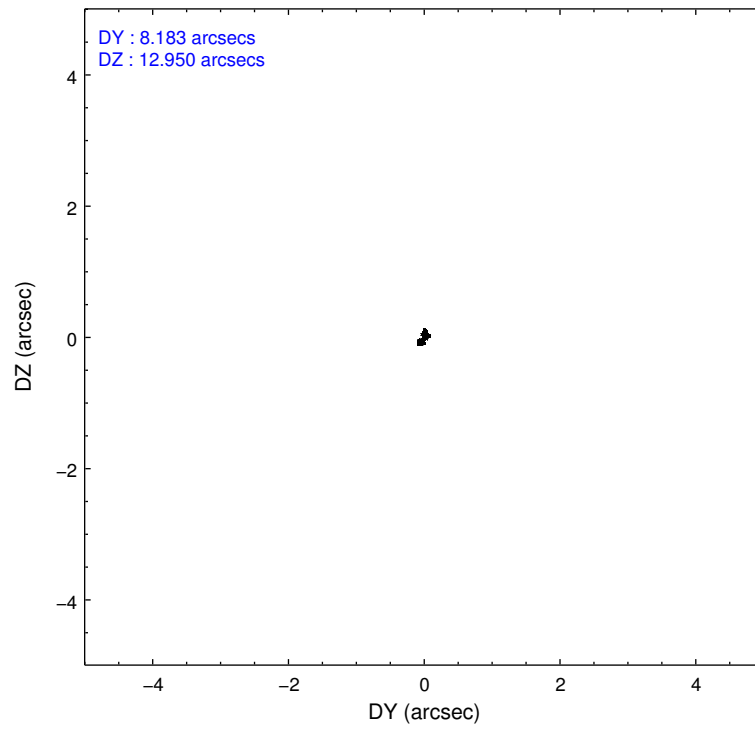
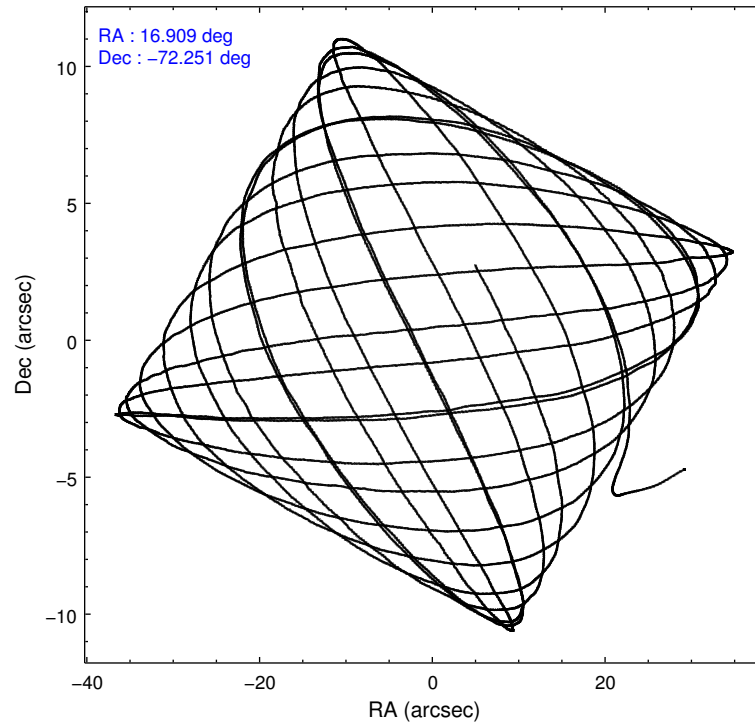
2.1.4 Events

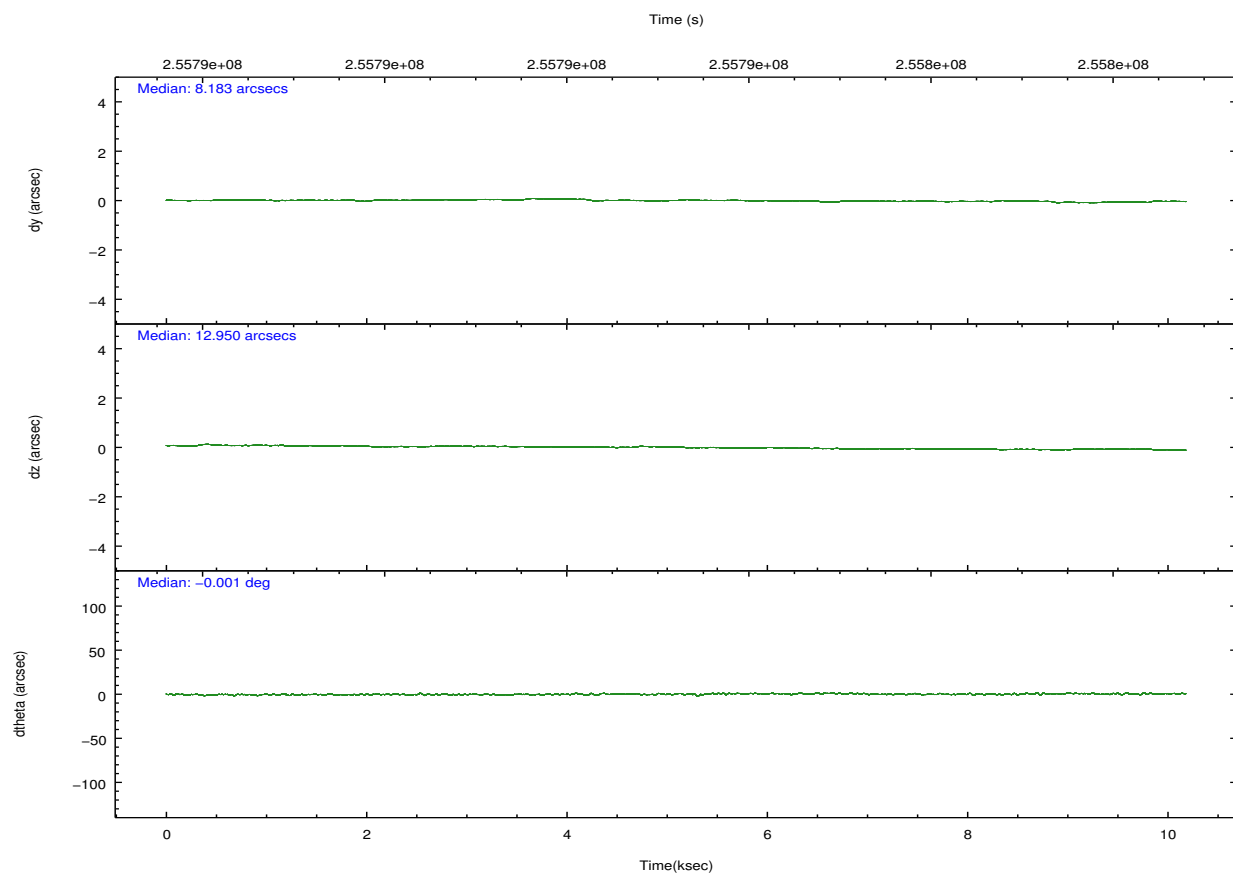
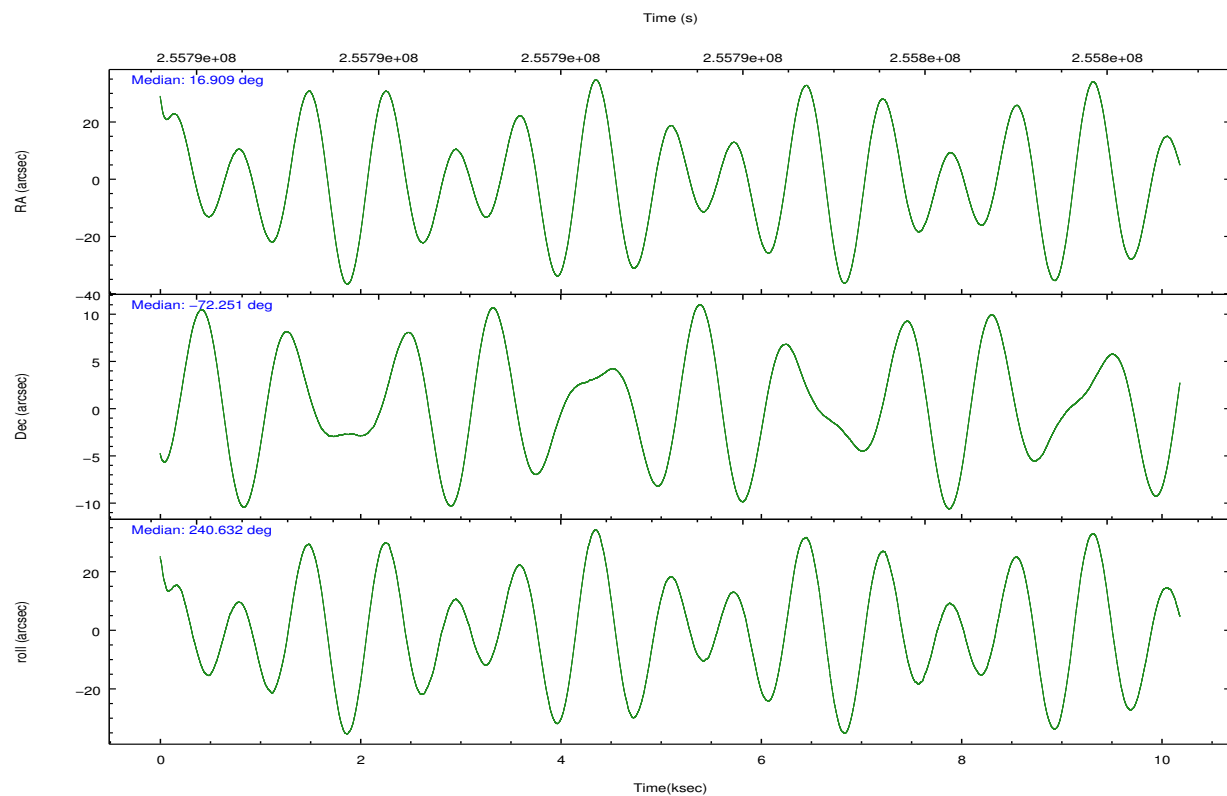
	ccd 0	ccd 1	ccd 2	ccd 3	ccd 6	ccd 7		ccd 0	ccd 1	ccd 2	ccd 3	ccd 6	ccd 7
level 1 events	82972	85504	92770	94072	95424	126246	grade 0 events	4819	4462	4907	4823	4238	4639
rejected events	72552	74835	82576	83804	85014	77613		5%	5%	5%	5%	4%	3%
rejected %	87%	87%	89%	89%	89%	61%	grade 1 events	59	39	53	57	43	128
								0%	0%	0%	0%	0%	0%
							grade 2 events	2321	2416	2157	2111	2493	10391
								2%	2%	2%	2%	2%	8%
							grade 3 events	1078	1122	1027	1016	1071	4600
								1%	1%	1%	1%	1%	3%
							grade 4 events	990	1186	1043	1102	1087	4455
								1%	1%	1%	1%	1%	3%
							grade 5 events	3641	3861	3466	4195	4364	12201
								4%	4%	3%	4%	4%	9%
							grade 6 events	1858	2210	1793	1880	2262	27879
								2%	2%	1%	1%	2%	22%
							grade 7 events	68206	70208	78324	78888	79866	61953
								82%	82%	84%	83%	83%	49%

2.2 Compared Parameters

Parameter	Planned	Actual	Parameter	Planned	Actual
Instrument	ACIS	ACIS	Obspar format version number	7	7
Detector	ACIS-012367	ACIS-012367	Obspar file type	PREDICTED	ACTUAL
Grating	NONE	NONE	Obspar update status	NONE	UPDATED
Data mode	FAINT	FAINT	Number of optional ACIS chips dropped	0	0
Observation mode	POINTING	POINTING	On-chip summing requested	N	N
[deg] Pointing RA	16.907439	16.90890962295339	Subarray requested	NONE	NONE
[deg] Pointing Dec	-72.223762	-72.25120756236856	Alternating exposures requested	N	N
[deg] Pointing Roll	240.427330	240.6374232385968	[s] Primary exposure time	0.000000	3.2
[mm] SIM focus pos	-0.782348	-0.7809083437167272			
[mm] SIM defocus	0	0.001439871863259334			
[mm] SIM translation stage pos	-233.592463	-233.5874344608287			
[mm] SIM translation stage offset	0	-0.005018542100998502			
[s] Observation start time (MET)	255788291.184000	255786870.55765			
Observation start date	2006-02-08T12:17:06	2006-02-08T11:54:30			
[s] Observation end time (MET)	255798291.184000	255798839.4832			
Observation end date	2006-02-08T15:03:46	2006-02-08T15:13:59			
Read mode	TIMED	TIMED			

2.3 Aspect



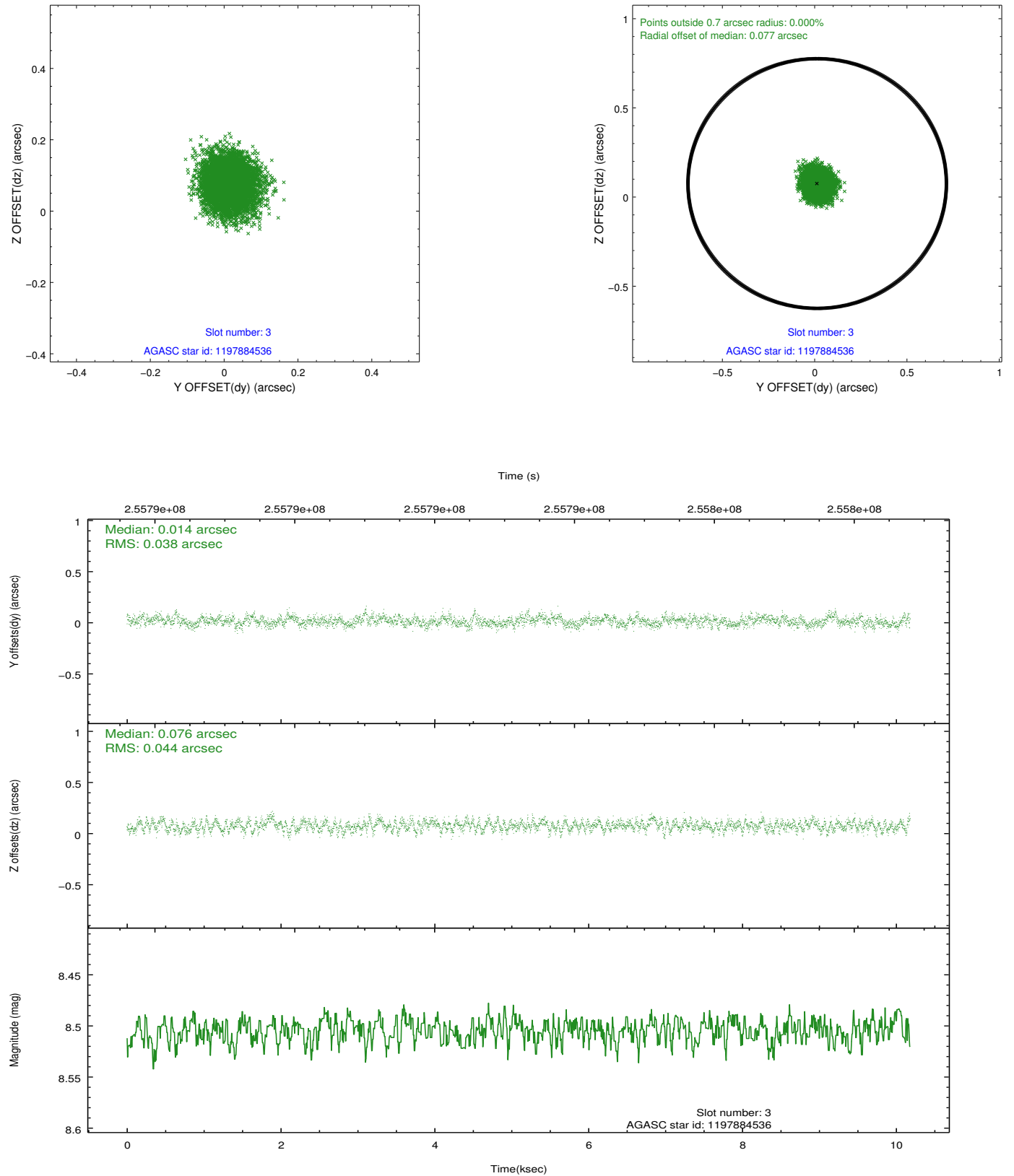


Slot Statistics

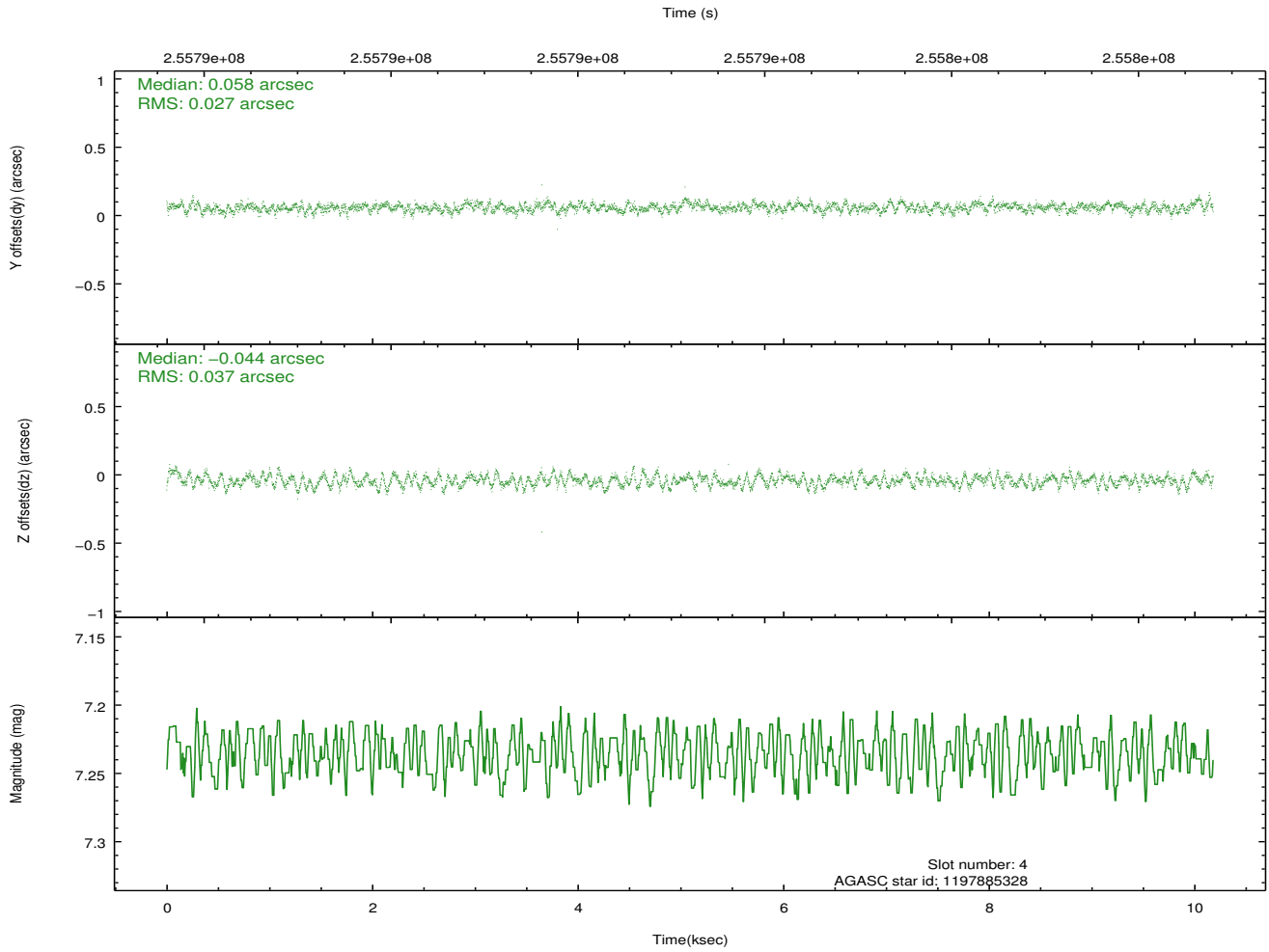
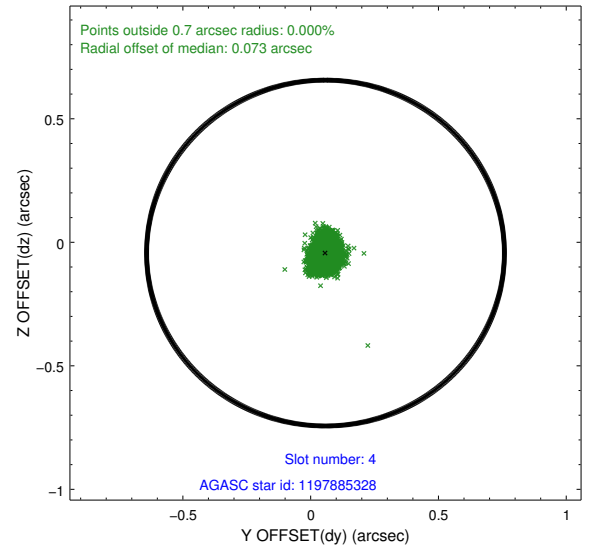
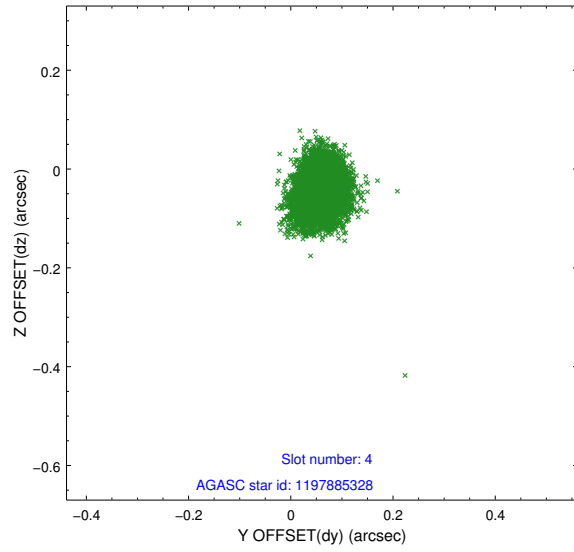
slot	status	id	mag	n_pts	med_dy	med_dz	dr1	dr2	ra	dec	mean_y	mean_z
0	FID	ACIS-I-1	7.24	2484	-0.022	-0.010	0.008	0.014	0.000000	0.000000	931.43	-836.52
1	FID	ACIS-I-4	7.20	2484	0.175	0.041	0.008	0.013	0.000000	0.000000	2151.99	1063.06
2	FID	ACIS-I-5	7.22	2484	-0.251	0.039	0.007	0.013	0.000000	0.000000	-1816.10	1061.57
3	GUIDE	1197884536	8.50	4964	0.014	0.076	0.062	0.098	17.160729	-71.835289	-1355.81	-442.89
4	GUIDE	1197885328	7.24	4968	0.058	-0.044	0.049	0.079	16.283090	-71.733943	-1183.22	-1481.19
5	GUIDE	1198189696	7.39	4968	-0.091	0.064	0.049	0.079	15.223750	-72.697522	2394.88	-713.59
6	GUIDE	1198282744	9.02	4967	0.057	0.018	0.070	0.113	17.028326	-73.013356	2410.33	1513.61
7	GUIDE	1198283128	7.93	4964	-0.037	-0.116	0.059	0.092	17.272580	-72.642428	1118.94	1085.65

2.4 Star Slots

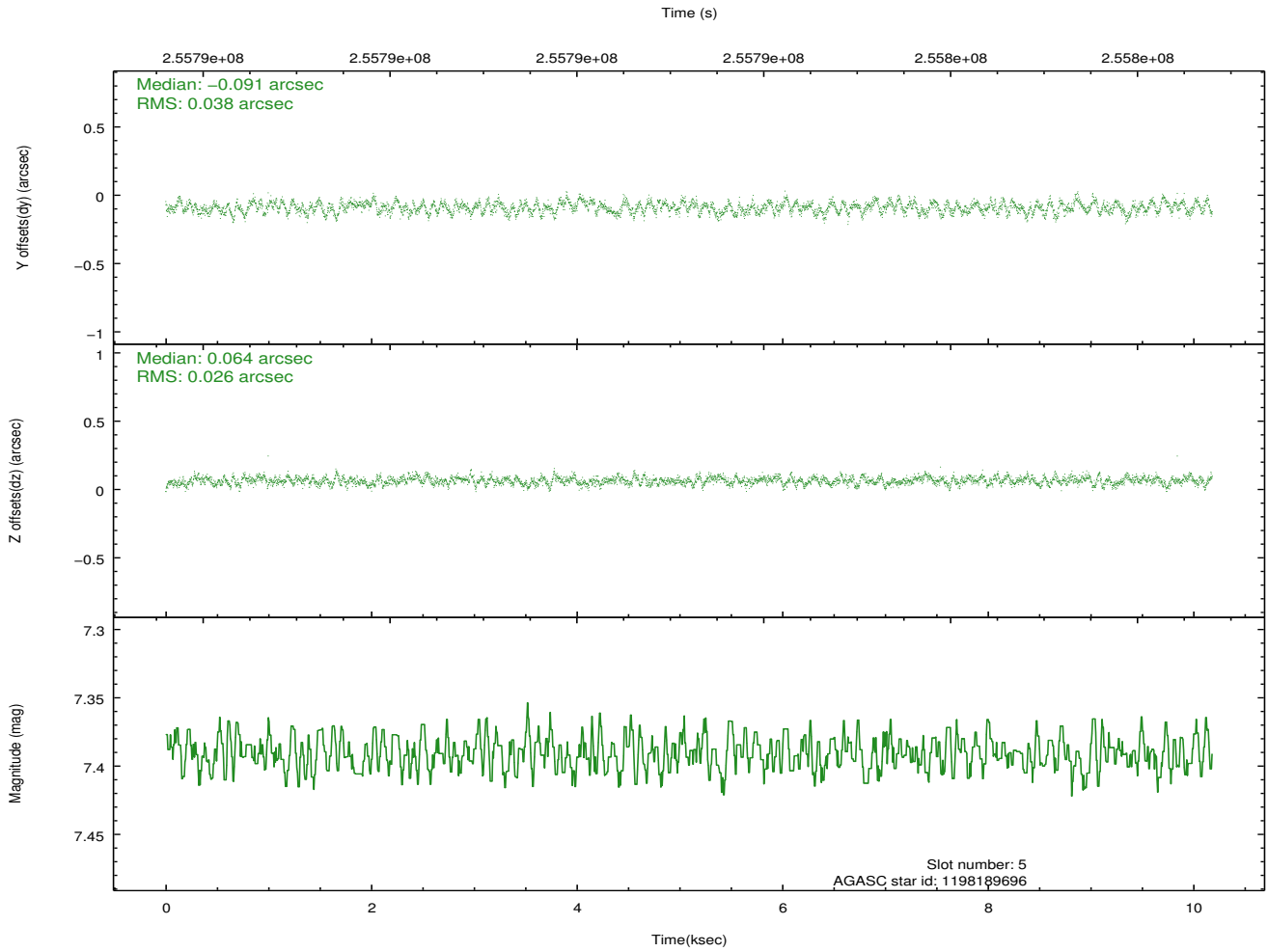
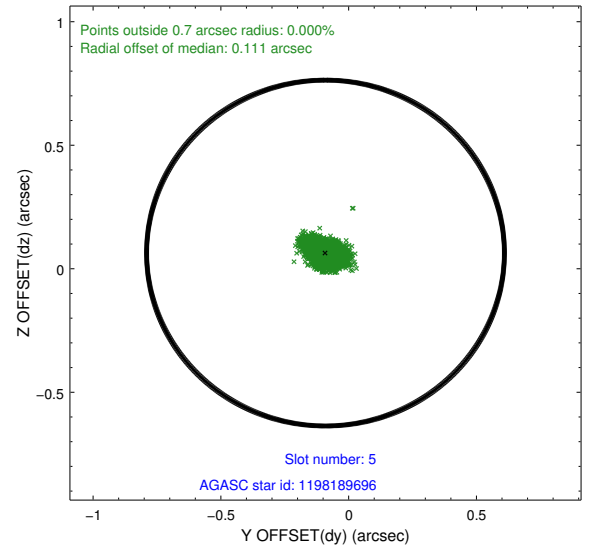
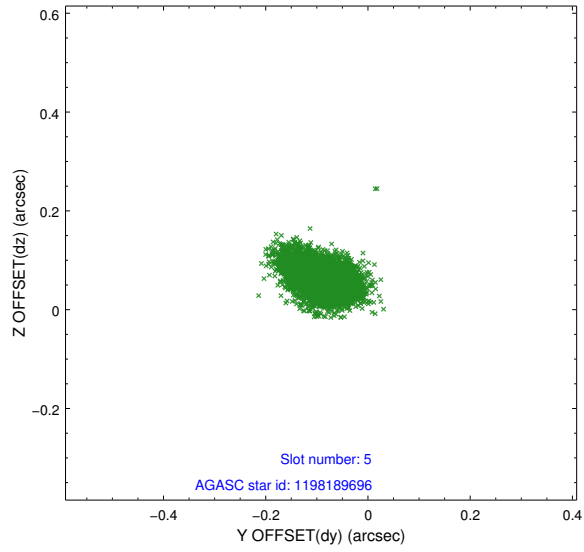
2.4.1 Slot 3



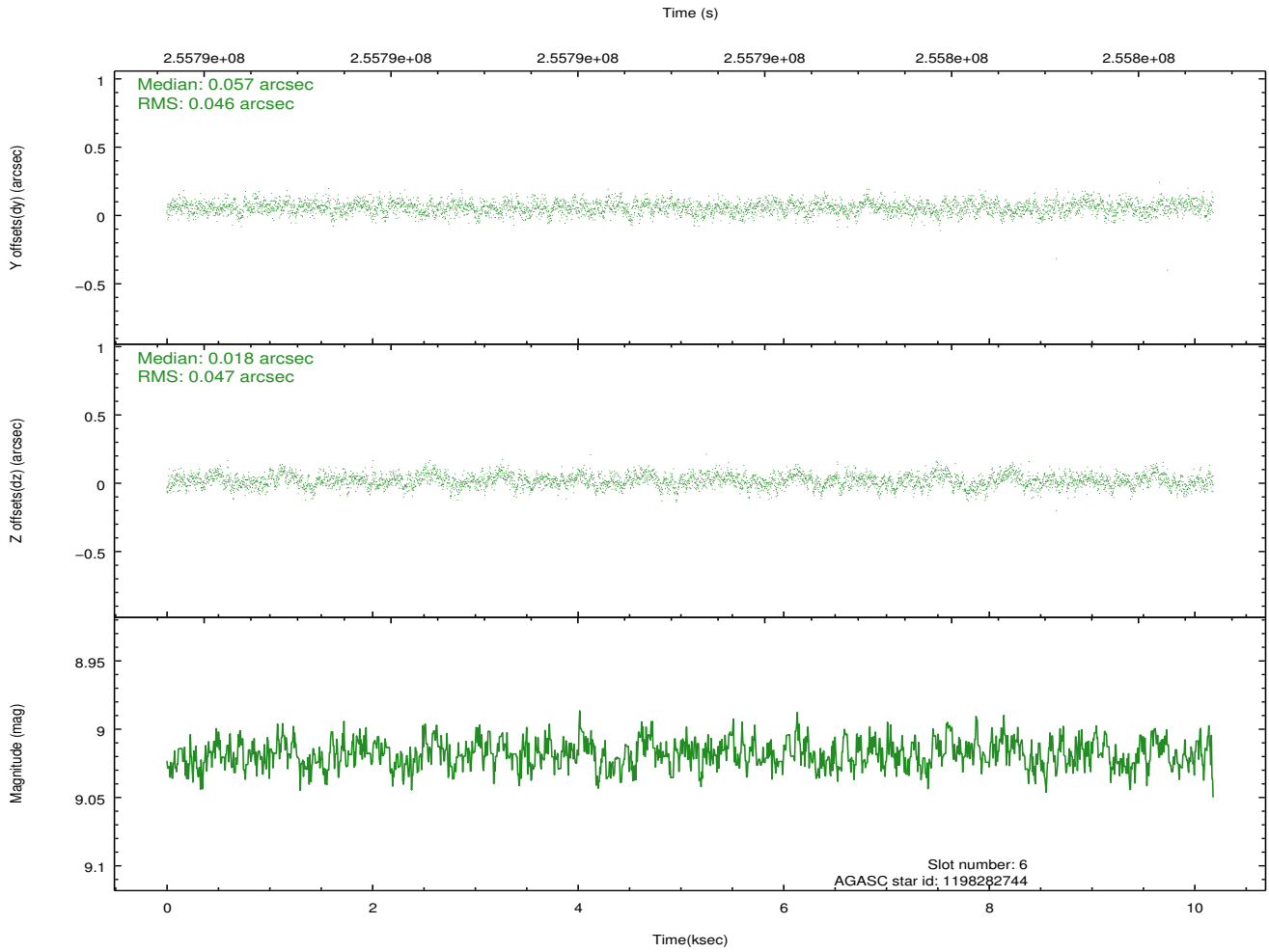
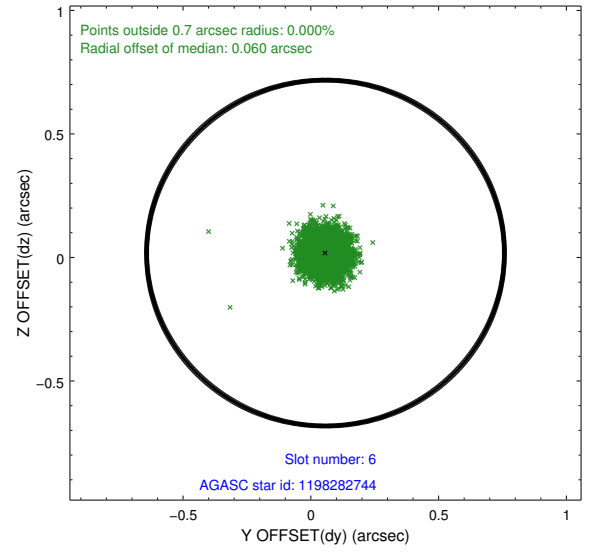
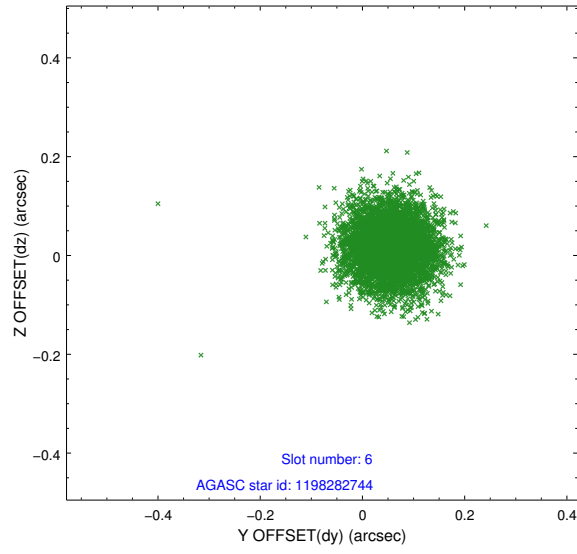
2.4.2 Slot 4



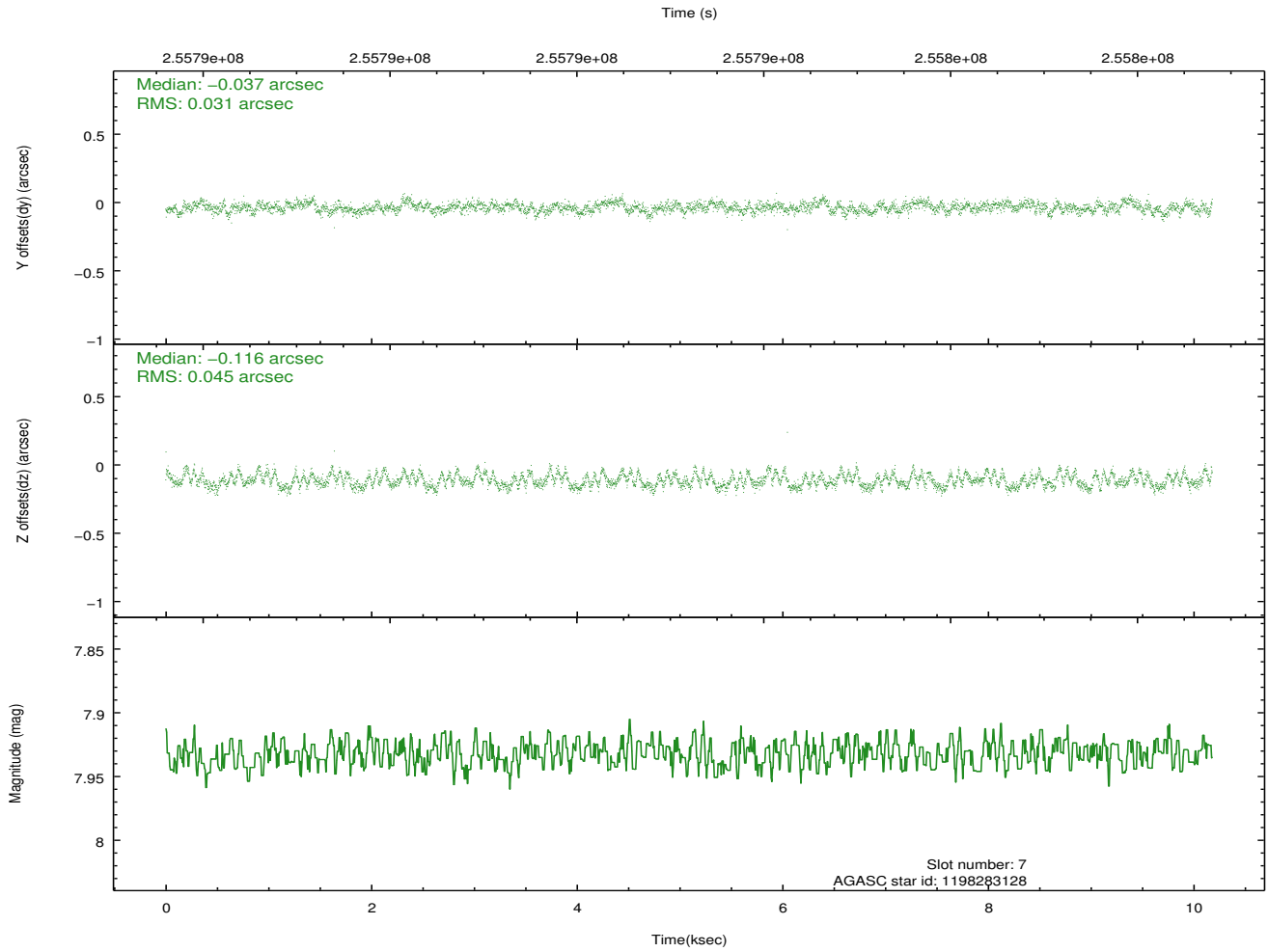
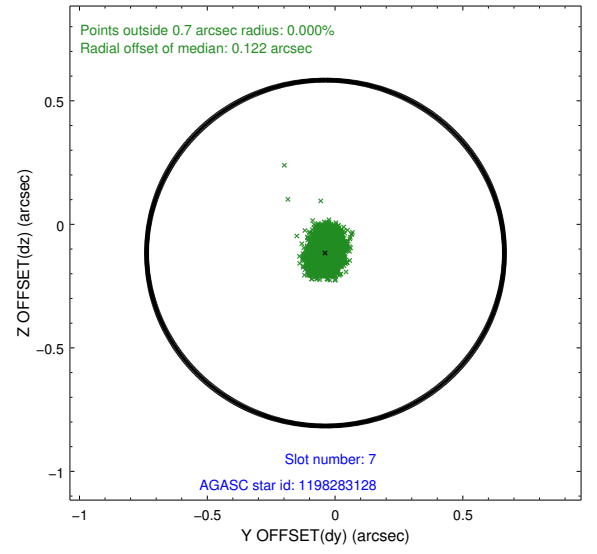
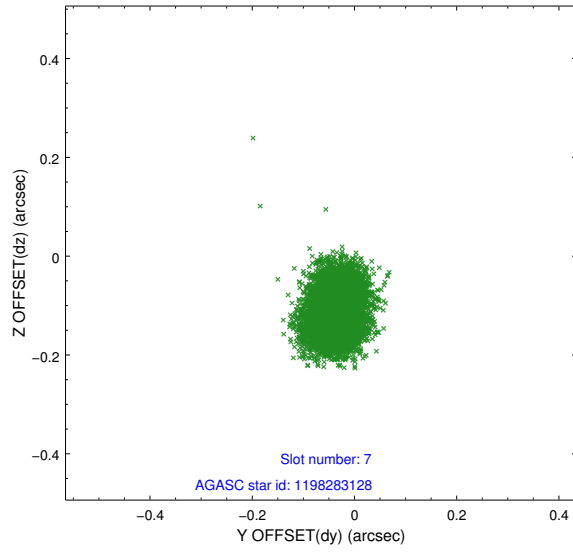
2.4.3 Slot 5



2.4.4 Slot 6

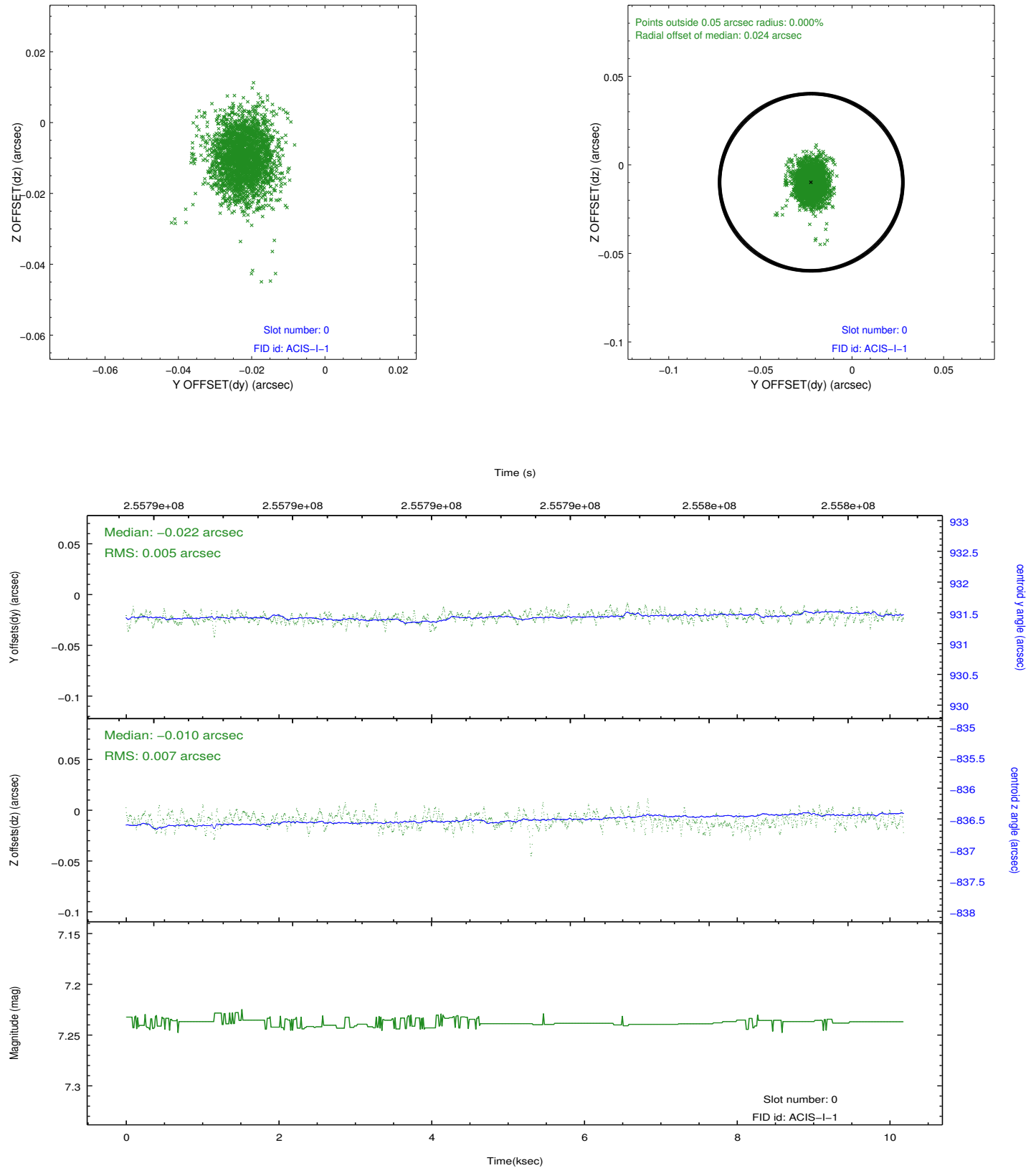


2.4.5 Slot 7

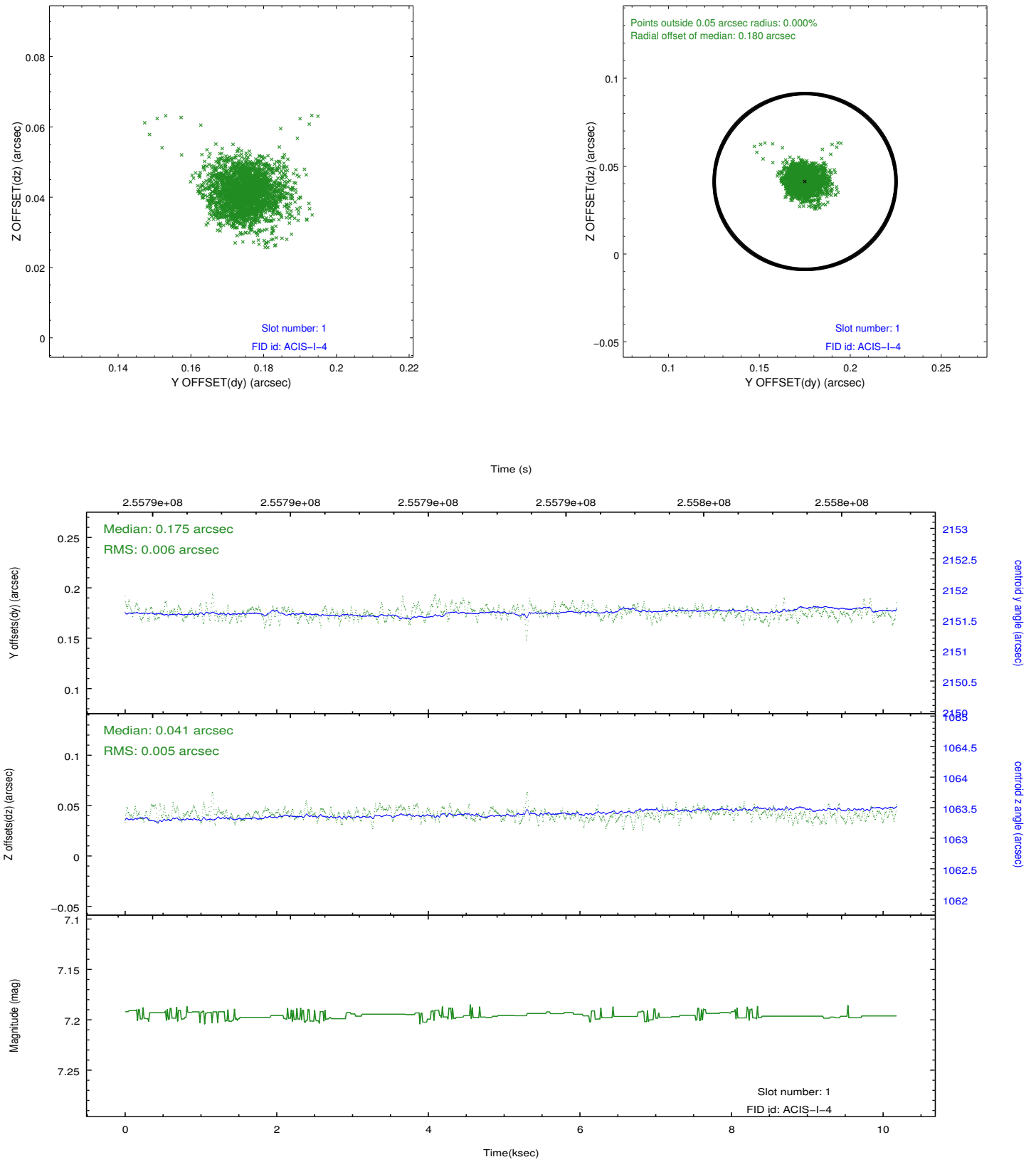


2.5 FID Slots

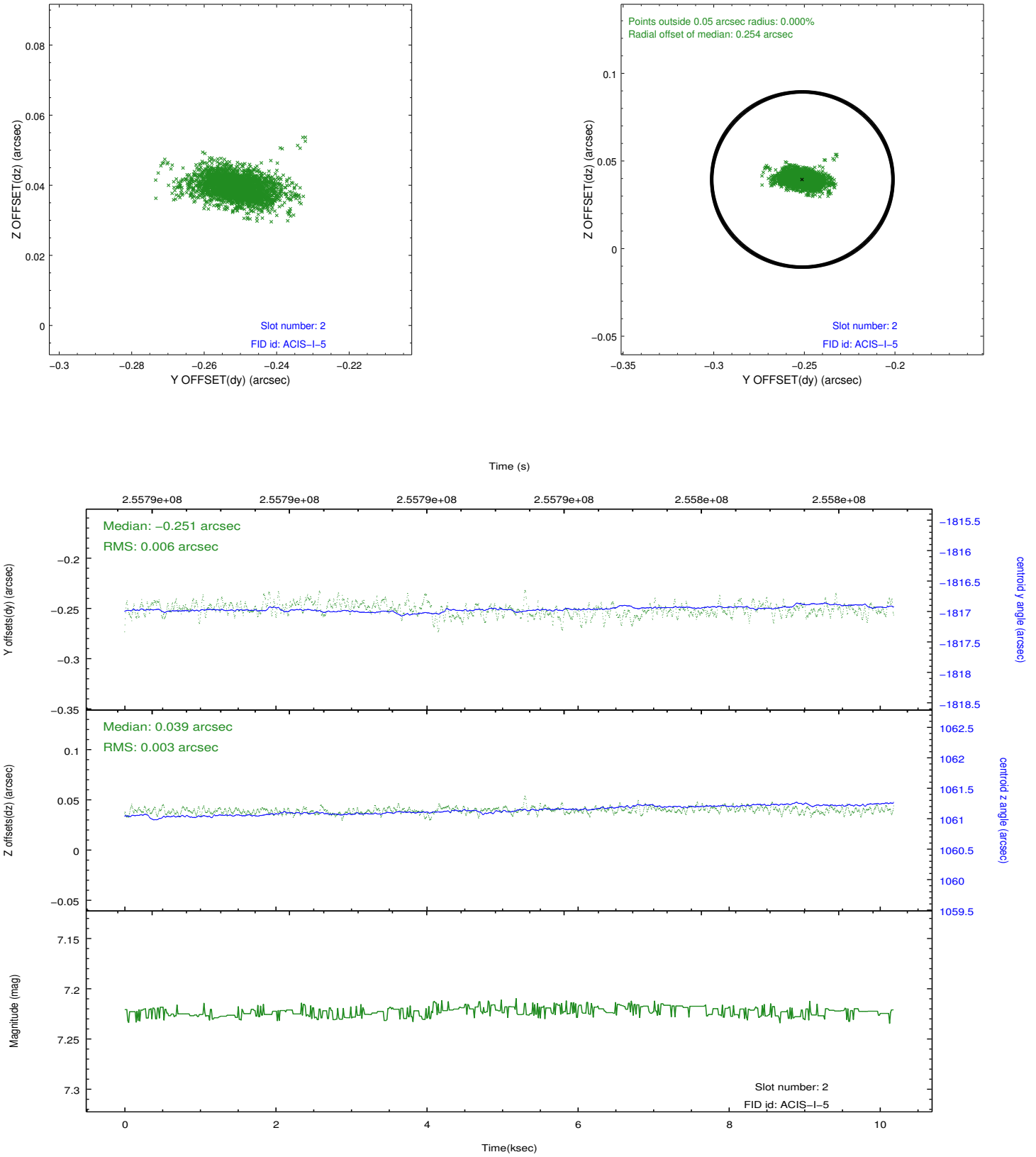
2.5.1 Slot 0



2.5.2 Slot 1



2.5.3 Slot 2



A Summary

A.1 Status

V&V Scientist	Jen Lauer
V&V Date (YYYY-MM-DD)	2012.03.27
V&V Edition	1
V&V Disposition and Status	OK
V&V Charge Time	10.1759999

A.2 Comments