

V&V Reference Report

L2 ASCDS Version : 8.4.5

Observation 54395 - L2 Version 1
Chandra X-Ray Center

L2 Processing Date : Aug 20 2012

Contents

1	Front	2
2	OBI	3
2.1	OBI	3
2.1.1	Images	3
2.1.2	Bias	3
2.1.3	Parameters	4
2.1.4	Events	4
2.2	Compared Parameters	5
2.3	Star Slots	6
2.4	FID Slots	6
A	Summary	7
A.1	Status	7
A.2	Comments	7

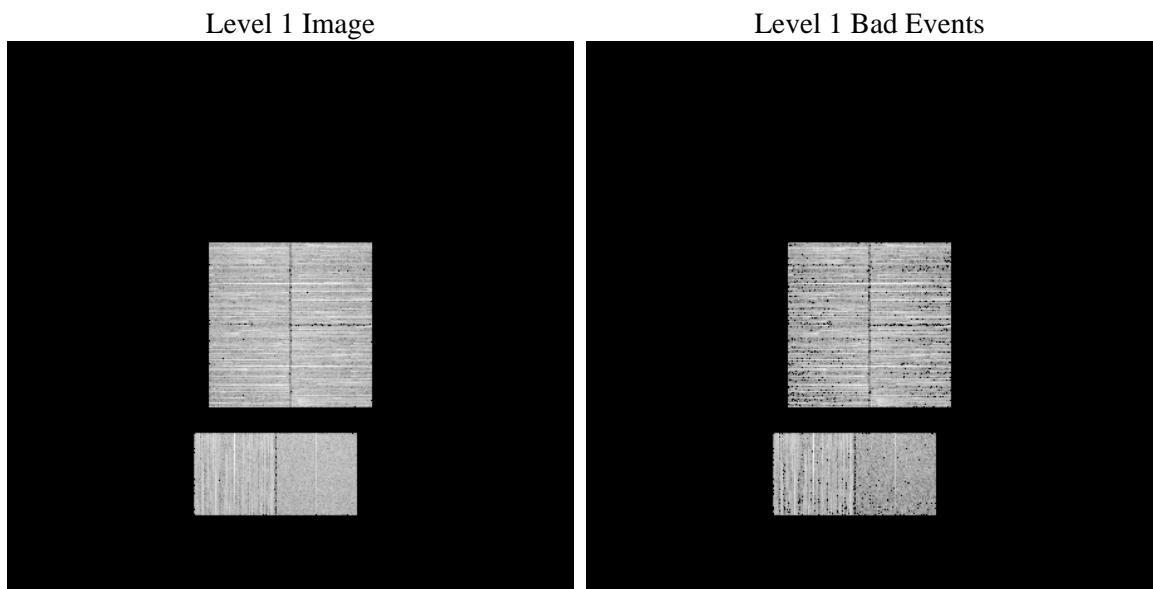
1 Front

seq_num	 	Sequence number
obs_id	54395	Observation id
title	ACIS-012367 diagnostics	Proposal title
observer	CHANDRA engineering request/realtime commanding	Principal investig
object	 	Source name
dtcycle	0	
cycle	P	events from which exps? Prim/Second/Both
ra_targ	0.0	Observer's specified target RA [deg]
dec_targ	0.0	Observer's specified target Dec [deg]
ra_nom	308.99355216087	Nominal RA [deg]
dec_nom	7.9720014742845	Nominal Dec [deg]
roll_nom	224.13087870265	Nominal Roll [deg]
revision	1	Processing version of data
ontime	3291.6822549105	Sum of GTIs [s]
livetime	3250.0009921857	Livetime [s]
ontime0	3291.6412149072	Sum of GTIs [s]
ontime1	3291.6001749039	Sum of GTIs [s]
ontime2	3291.5591349006	Sum of GTIs [s]
ontime3	3291.7232949138	Sum of GTIs [s]
ontime6	3291.5180948973	Sum of GTIs [s]
ontime7	3291.6822549105	Sum of GTIs [s]
l2events	96837	Number of level 2 events

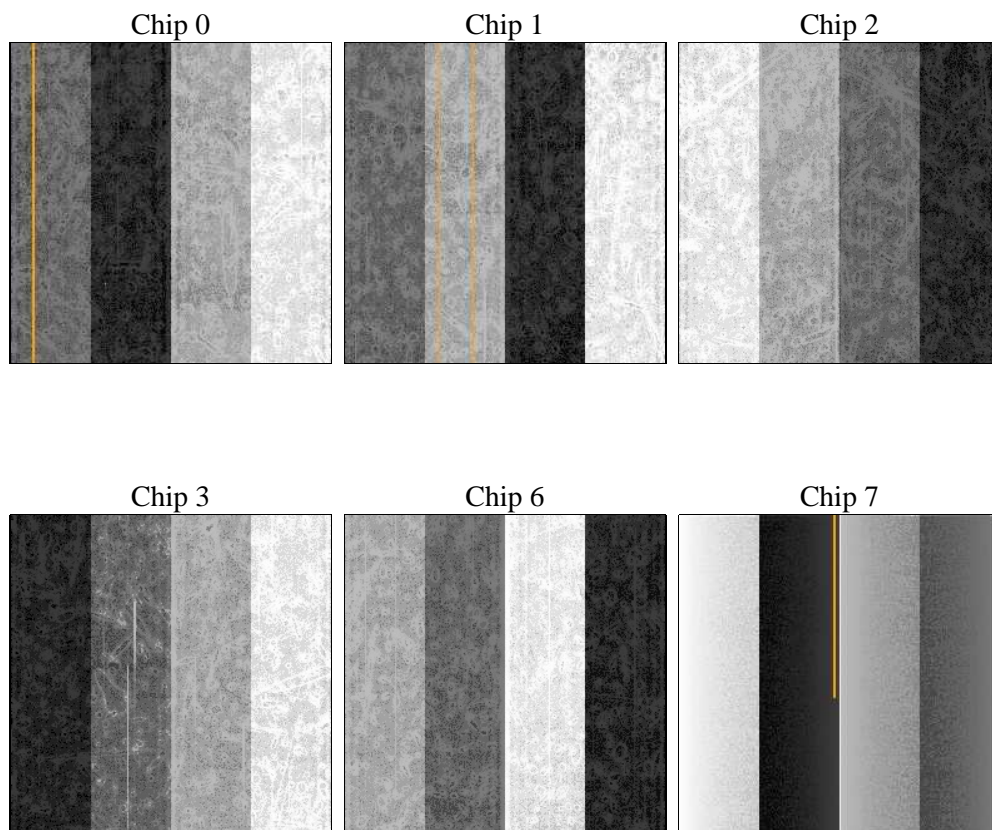
2 OBI

2.1 OBI

2.1.1 Images



2.1.2 Bias



2.1.3 Parameters

obi_num	0	Obi number	sched_exp_time	0.0	[s] Scheduled observation exposure time
ascdsver	8.4.5	Processing system revision	ontime	3291.6822549105	Sum of GTIs [s]
caldsver	4.5.1.1	 	ontime0	3291.6412149072	Sum of GTIs [s]
date	2012-08-20T19:08:45	Date and time of file creation	ontime1	3291.6001749039	Sum of GTIs [s]
revision	1	Processing version of data	ontime2	3291.5591349006	Sum of GTIs [s]
			ontime3	3291.7232949138	Sum of GTIs [s]
			ontime6	3291.5180948973	Sum of GTIs [s]
			ontime7	3291.6822549105	Sum of GTIs [s]
			l1events	373555	Number of level 1 events

2.1.4 Events

	ccd 0	ccd 1	ccd 2	ccd 3	ccd 6	ccd 7		ccd 0	ccd 1	ccd 2	ccd 3	ccd 6	ccd 7
level 1 events	62425	64013	64661	65679	64462	52315	grade 0 events	7981	7627	8070	8121	7962	4022
rejected events	47139	48893	49393	50461	48606	26591		12%	11%	12%	12%	12%	7%
rejected %	75%	76%	76%	76%	75%	50%	grade 1 events	45	29	59	57	31	27
								0%	0%	0%	0%	0%	0%
							grade 2 events	2902	3022	2883	2760	3091	6307
								4%	4%	4%	4%	4%	12%
							grade 3 events	1074	974	1031	992	998	2184
								1%	1%	1%	1%	1%	4%
							grade 4 events	1032	996	1057	1053	990	2167
								1%	1%	1%	1%	1%	4%
							grade 5 events	1209	1141	1036	1266	1231	3066
								1%	1%	1%	1%	1%	5%
							grade 6 events	2297	2501	2227	2292	2815	11044
								3%	3%	3%	3%	4%	21%
							grade 7 events	45885	47723	48298	49138	47344	23498
								73%	74%	74%	74%	73%	44%

2.2 Compared Parameters

Parameter	Planned	Actual	Parameter	Planned	Actual
Instrument	ACIS	ACIS	Obspar format version number	7	7
Detector	ACIS-012367	ACIS-012367	Obspar file type	PREDICTED	ACTUAL
Grating	NONE	NONE	Obspar update status	NONE	UPDATED
Data mode	FAINT	FAINT	Number of optional ACIS chips dropped	0	0
Observation mode	SECONDARY	SECONDARY	On-chip summing requested	N	N
[deg] Pointing RA	0	308.9935521608687	Subarray requested	NONE	NONE
[deg] Pointing Dec	0	7.972001474284463	Alternating exposures requested	N	N
[deg] Pointing Roll	0.0	224.1308787026548	[s] Primary exposure time	3.2	3.2
[mm] SIM focus pos	-1.429586	-1.428180813131781			
[mm] SIM defocus	0.1037507710433287	0.1051558262725154			
[mm] SIM translation stage pos	250.455976	250.466033080201			
[mm] SIM translation stage offset	0	-0.01005468664627074			
[s] Observation start time (MET)	461765791.404775	461765790.37978			
Observation start date	2012-08-19T12:16:31	2012-08-19T12:16:30			
[s] Observation end time (MET)	461770971.755053	461770970.73005			
Observation end date	2012-08-19T13:42:52	2012-08-19T13:42:50			
Read mode	TIMED	TIMED			

2.3 Star Slots

2.4 FID Slots

A Summary

A.1 Status

V&V Scientist	Joy Nichols
V&V Date (YYYY-MM-DD)	2012.08.21
V&V Edition	1
V&V Disposition and Status	OK
V&V Charge Time	3.2916822549105

A.2 Comments