

V&V Reference Report

L2 ASCDS Version : 8.5.1

Observation 5425 - L2 Version 3
Chandra X-Ray Center

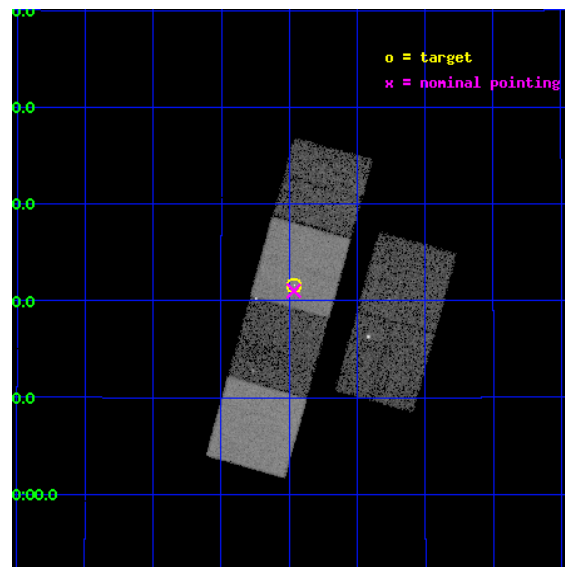
L2 Processing Date : Dec 15 2012

Contents

1	Front	2
2	OBI	3
2.1	OBI	3
2.1.1	Images	3
2.1.2	Bias	3
2.1.3	Parameters	4
2.1.4	Events	4
2.2	Compared Parameters	5
2.3	Aspect	6
2.4	Star Slots	9
2.4.1	Slot 3	9
2.4.2	Slot 4	10
2.4.3	Slot 5	11
2.4.4	Slot 6	12
2.4.5	Slot 7	13
2.5	FID Slots	14
2.5.1	Slot 0	14
2.5.2	Slot 1	15
2.5.3	Slot 2	16
A	Summary	17
A.1	Status	17
A.2	Comments	17

1 Front

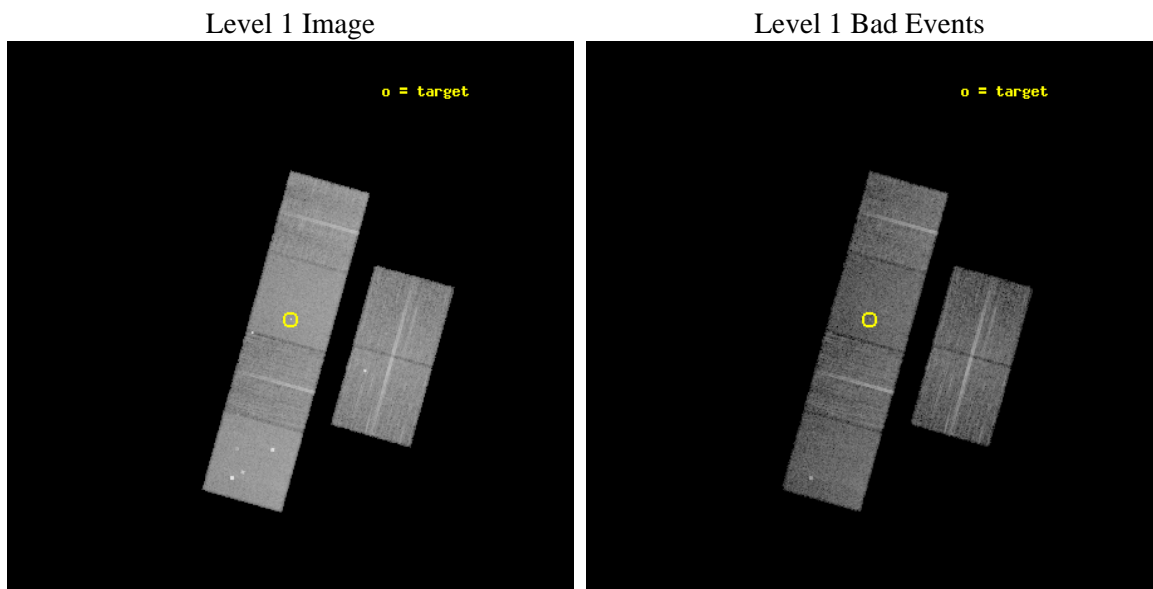
seq_num	200358	Sequence number
obs_id	5425	Observation id
title	How Do T Tauri Stars Generate X-rays?	Proposal title
observer	Professor David Weintraub	Principal investigator
object	V710 Tau	Source name
dtcycle	0	
cycle	P	events from which exps? Prim/Second/Both
ra_targ	67.990417	Observer's specified target RA [deg]
dec_targ	18.36025	Observer's specified target Dec [deg]
ra_nom	67.991397249066	Nominal RA [deg]
dec_nom	18.350619241398	Nominal Dec [deg]
roll_nom	285.61606527325	Nominal Roll [deg]
revision	3	Processing version of data
ontime	11023.999958932	Sum of GTIs [s]
livetime	10884.407433597	Livetime [s]
ontime2	11023.999958932	Sum of GTIs [s]
ontime3	11023.999958932	Sum of GTIs [s]
ontime5	11023.999958932	Sum of GTIs [s]
ontime6	11023.999958932	Sum of GTIs [s]
ontime7	11023.999958932	Sum of GTIs [s]
ontime8	11023.999958932	Sum of GTIs [s]
l2events	136541	Number of level 2 events



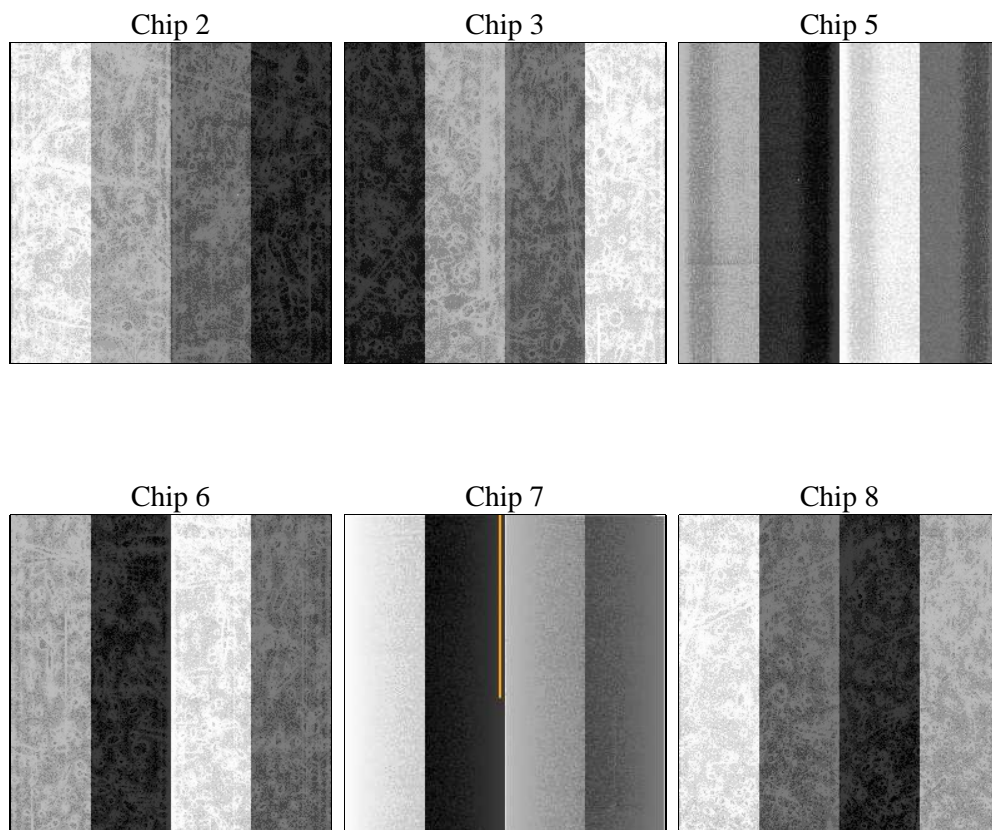
2 OBI

2.1 OBI

2.1.1 Images



2.1.2 Bias



2.1.3 Parameters

obi_num	0	Obi number	sched_exp_time	11000.000000	[s] Scheduled observation exposure time
ascdsver	8.5.1	Processing system revision	ontime	11023.999958932	Sum of GTIs [s]
caldsver	4.5.5	 	ontime2	11023.999958932	Sum of GTIs [s]
date	2012-12-15T05:17:11	Date and time of file creation	ontime3	11023.999958932	Sum of GTIs [s]
revision	3	Processing version of data	ontime5	11023.999958932	Sum of GTIs [s]
			ontime6	11023.999958932	Sum of GTIs [s]
			ontime7	11023.999958932	Sum of GTIs [s]
			ontime8	11023.999958932	Sum of GTIs [s]
			l1events	608216	Number of level 1 events

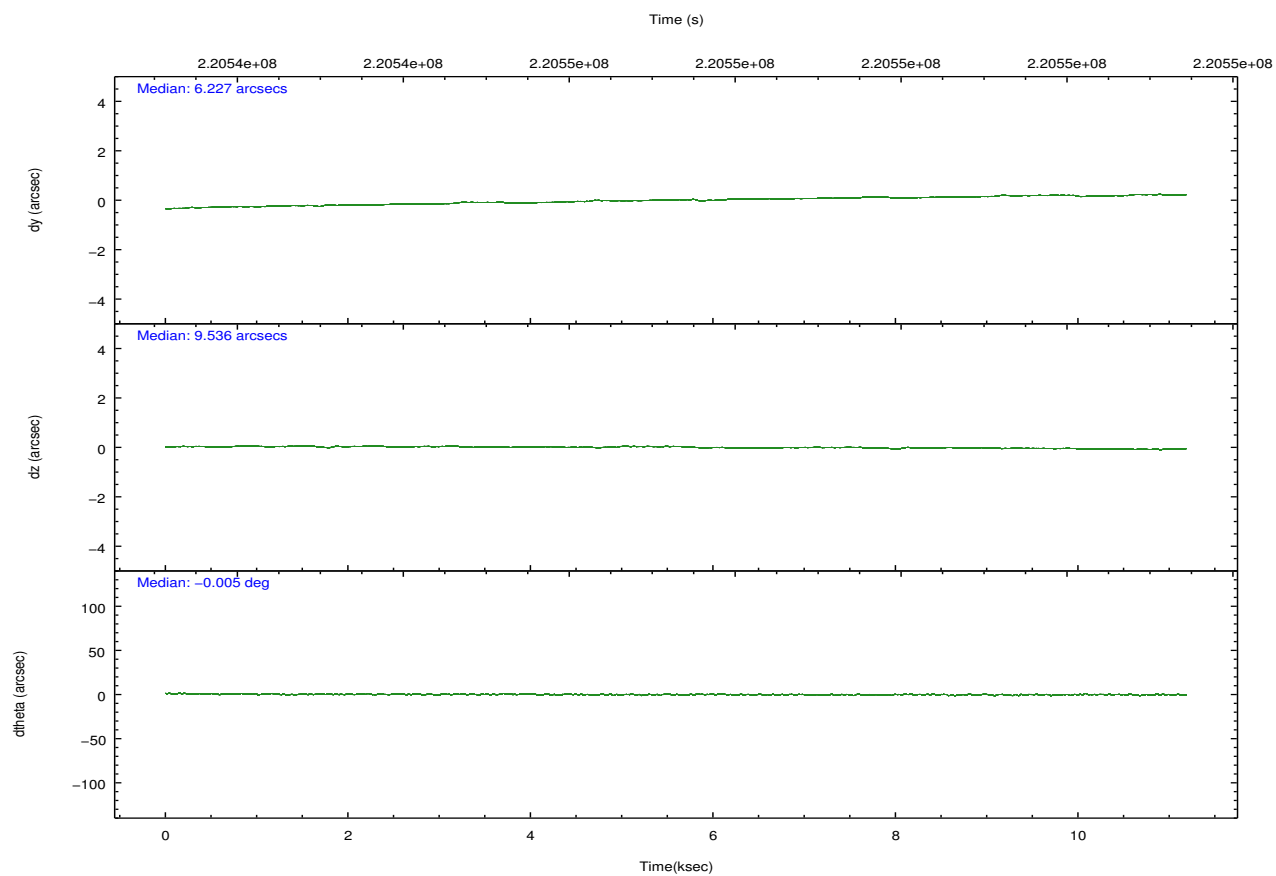
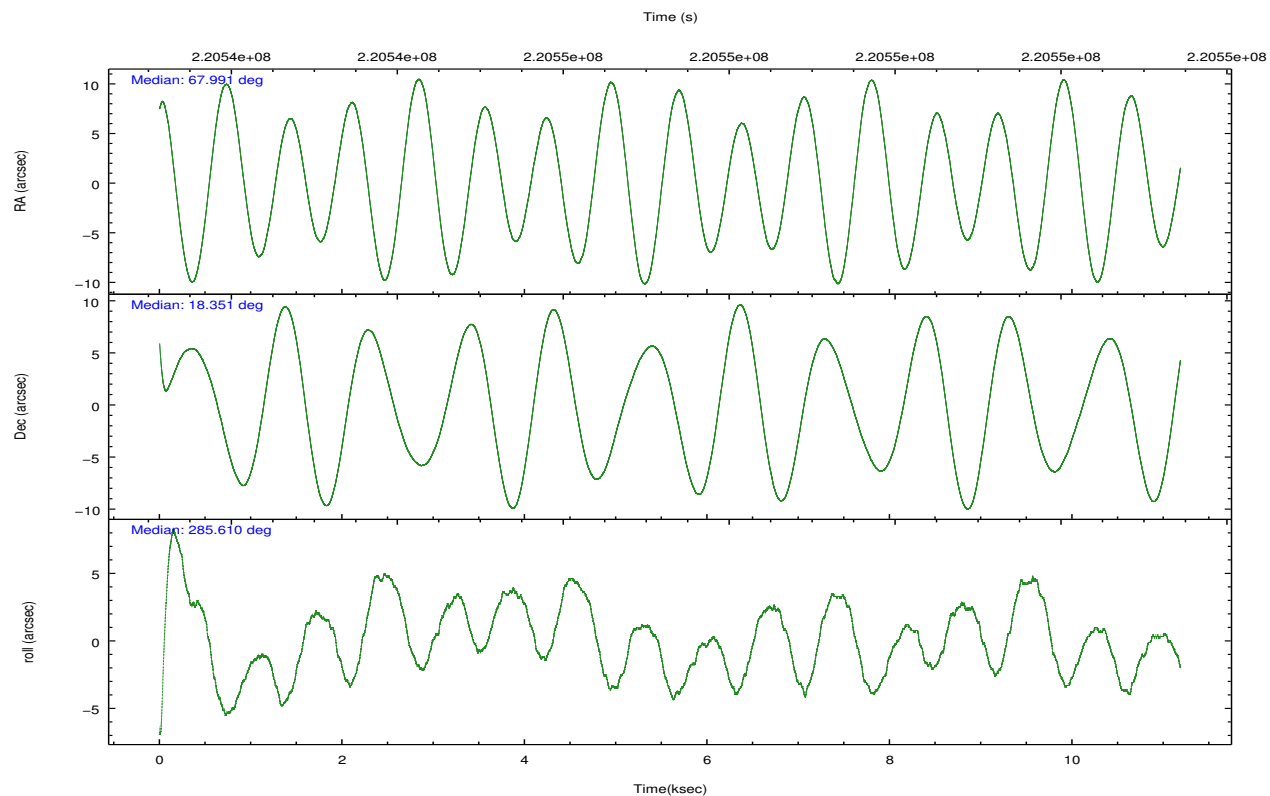
2.1.4 Events

	ccd 2	ccd 3	ccd 5	ccd 6	ccd 7	ccd 8		ccd 2	ccd 3	ccd 5	ccd 6	ccd 7	ccd 8
level 1 events	90609	81602	129550	85991	113935	106529	grade 0 events	5521	4186	7980	4491	4286	6937
rejected events	79251	71919	68484	75377	66623	83877		6%	5%	6%	5%	3%	6%
rejected %	87%	88%	52%	87%	58%	78%	grade 1 events	64	44	174	59	112	81
								0%	0%	0%	0%	0%	0%
							grade 2 events	2291	1859	18815	2163	9383	5069
								2%	2%	14%	2%	8%	4%
							grade 3 events	933	977	2153	933	4190	2408
								1%	1%	1%	1%	3%	2%
							grade 4 events	963	921	2081	950	4169	2212
								1%	1%	1%	1%	3%	2%
							grade 5 events	3329	3598	9126	3868	10708	5093
								3%	4%	7%	4%	9%	4%
							grade 6 events	1654	1744	30049	2081	25299	6033
								1%	2%	23%	2%	22%	5%
							grade 7 events	75854	68273	59172	71446	55788	78696
								83%	83%	45%	83%	48%	73%

2.2 Compared Parameters

Parameter	Planned	Actual	Parameter	Planned	Actual
Instrument	ACIS	ACIS	Obspar format version number	7	7
Detector	ACIS-235678	ACIS-235678	Obspar file type	PREDICTED	ACTUAL
Grating	NONE	NONE	Obspar update status	NONE	UPDATED
Data mode	FAINT	FAINT	Number of optional ACIS chips dropped	0	0
Observation mode	POINTING	POINTING	On-chip summing requested	N	N
[deg] Pointing RA	67.970621	67.9913972490664	Subarray requested	NONE	NONE
[deg] Pointing Dec	18.369410	18.35061924139802	Alternating exposures requested	N	N
[deg] Pointing Roll	285.465994	285.6160652732473	[s] Primary exposure time	0.000000	3.2
[mm] SIM focus pos	-0.684267	-0.6828225247311905			
[mm] SIM defocus	0	0.001444936568705701			
[mm] SIM translation stage pos	-190.132523	-190.1400660498719			
[mm] SIM translation stage offset	0	0.00754346686406393			
[s] Observation start time (MET)	220541886.184000	220540890.9447			
Observation start date	2004-12-27T13:37:02	2004-12-27T13:21:30			
[s] Observation end time (MET)	220552886.184000	220554008.38279			
Observation end date	2004-12-27T16:40:22	2004-12-27T17:00:08			
Read mode	TIMED	TIMED			

2.3 Aspect

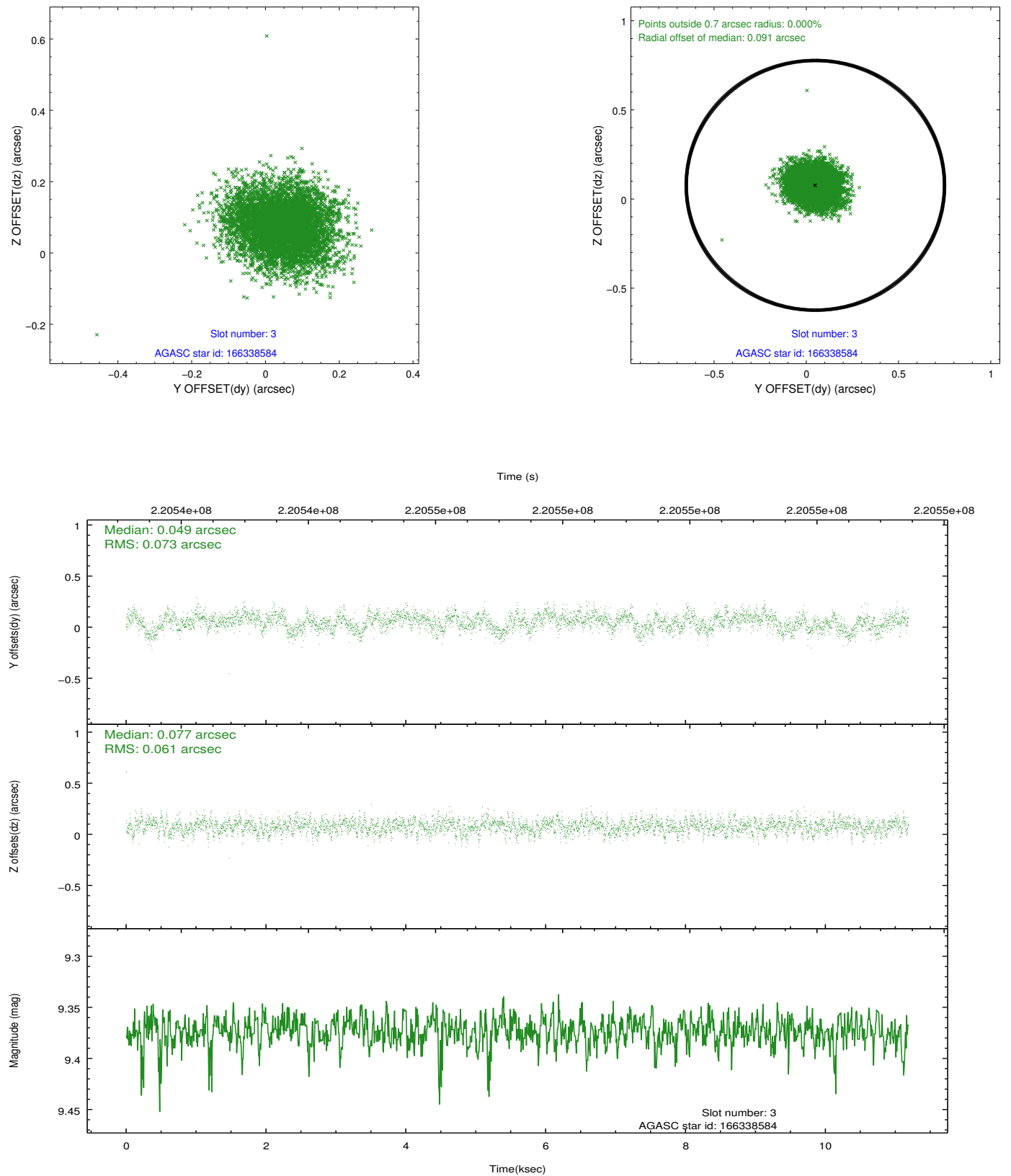


Slot Statistics

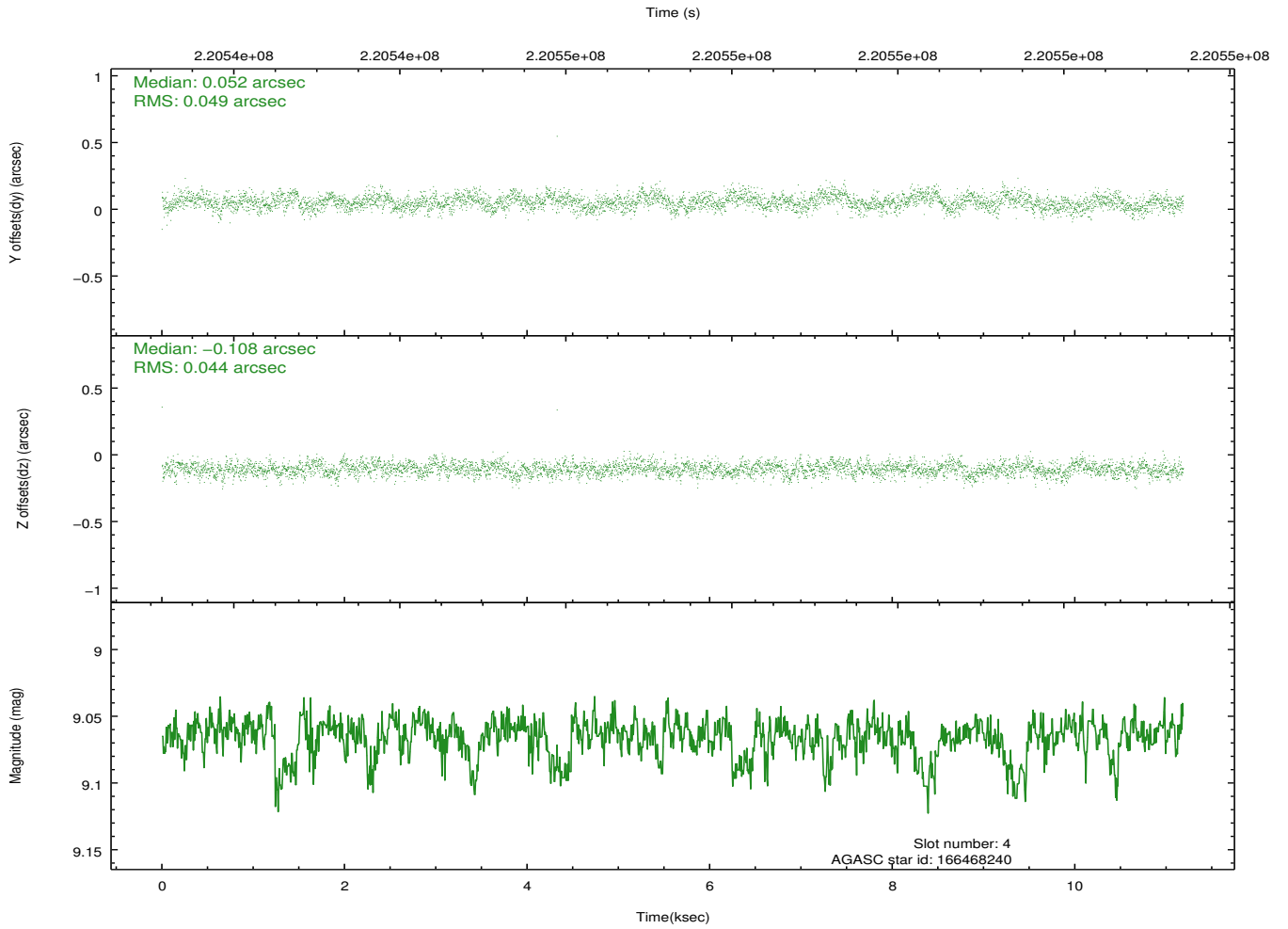
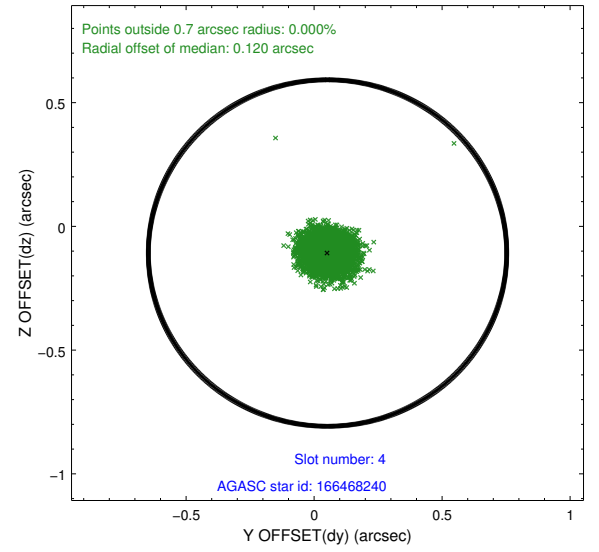
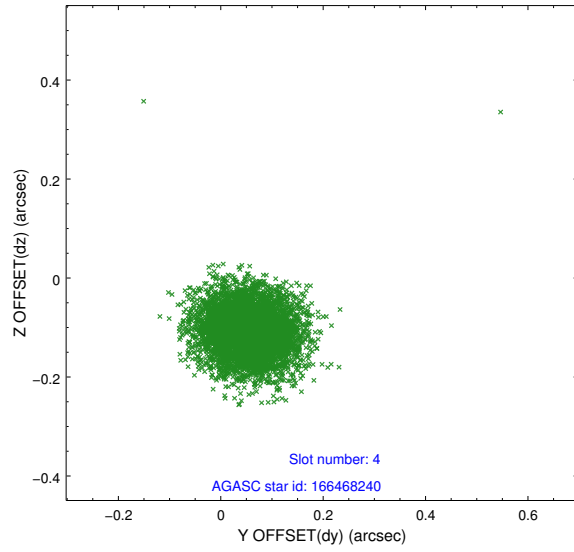
slot	status	id	mag	n_pts	med_dy	med_dz	dr1	dr2	ra	dec	mean_y	mean_z
0	FID	ACIS-S-1	7.18	2729	0.024	-0.017	0.009	0.017	0.000000	0.000000	937.11	-1726.42
1	FID	ACIS-S-5	7.24	2729	-0.079	0.014	0.009	0.024	0.000000	0.000000	-1811.72	170.72
2	FID	ACIS-S-6	7.35	2729	0.032	0.014	0.010	0.023	0.000000	0.000000	402.19	815.18
3	GUIDE	166338584	9.37	5451	0.049	0.077	0.101	0.163	67.904616	17.709782	2228.96	-850.36
4	GUIDE	166468240	9.06	5449	0.052	-0.108	0.069	0.113	68.167699	17.861525	1942.68	163.54
5	GUIDE	166995216	7.92	5458	-0.058	0.028	0.061	0.098	68.200288	18.935370	-1755.21	1297.40
6	GUIDE	166996584	9.14	5452	-0.023	0.001	0.068	0.111	68.020035	18.861675	-1663.27	635.19
7	GUIDE	166334824	7.12	5457	-0.022	0.007	0.066	0.115	67.376458	17.863163	1210.95	-2446.33

2.4 Star Slots

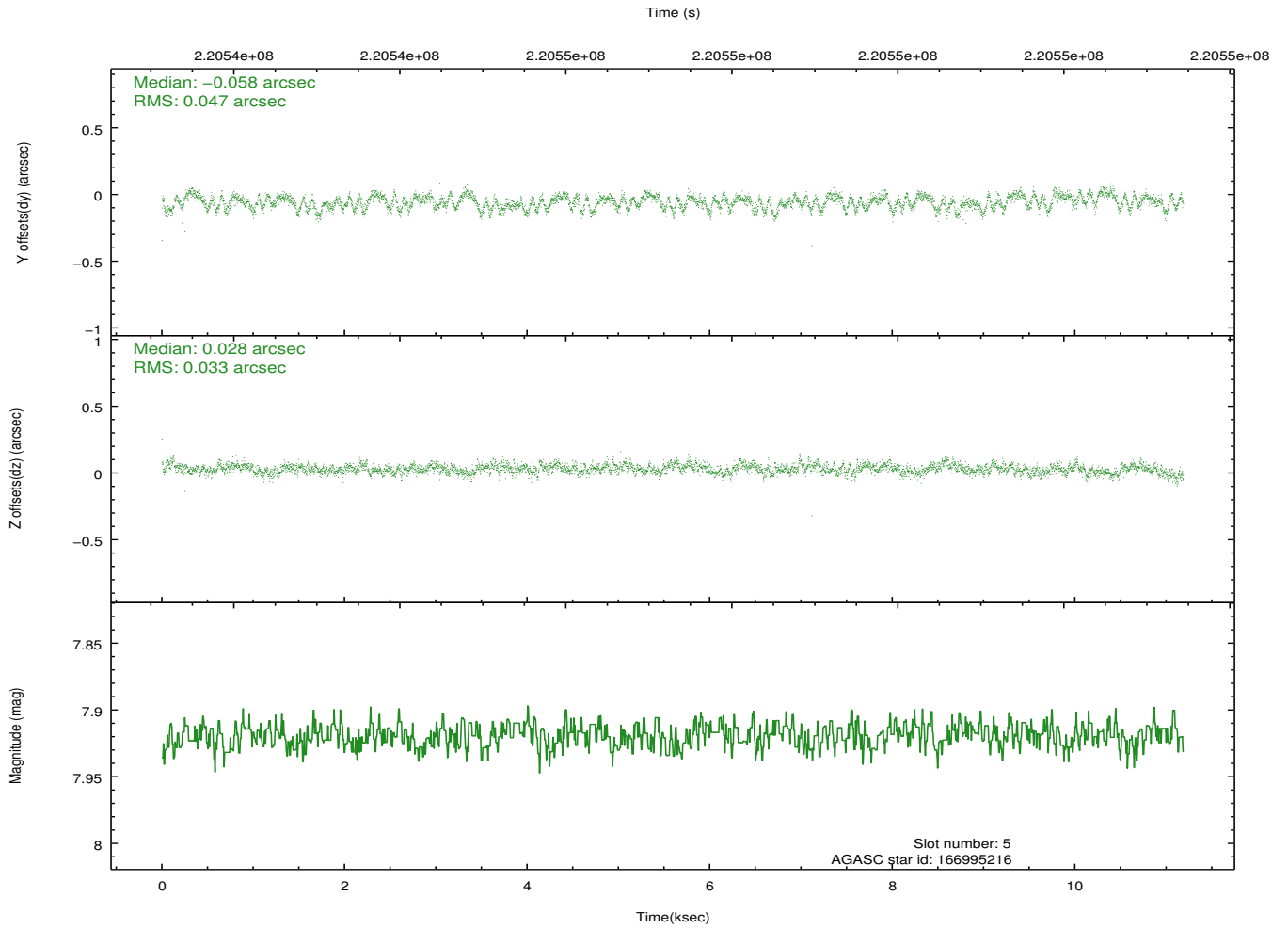
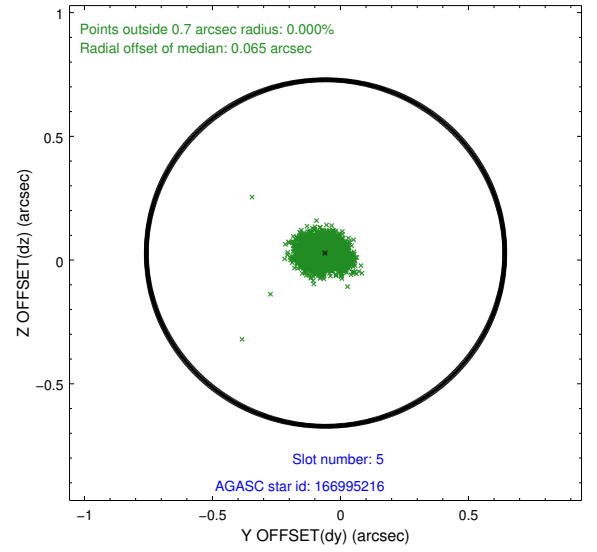
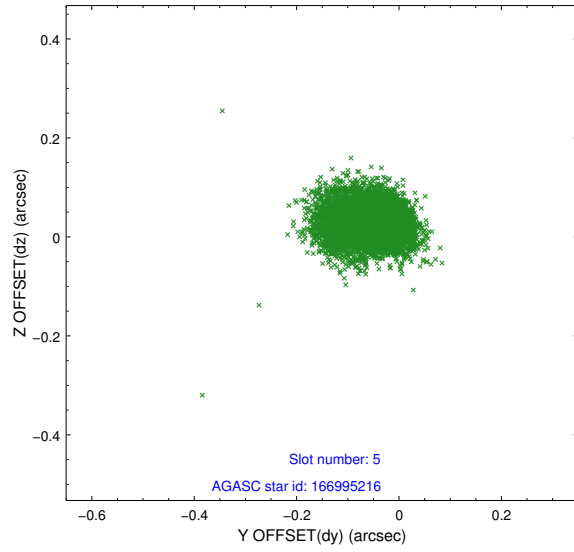
2.4.1 Slot 3



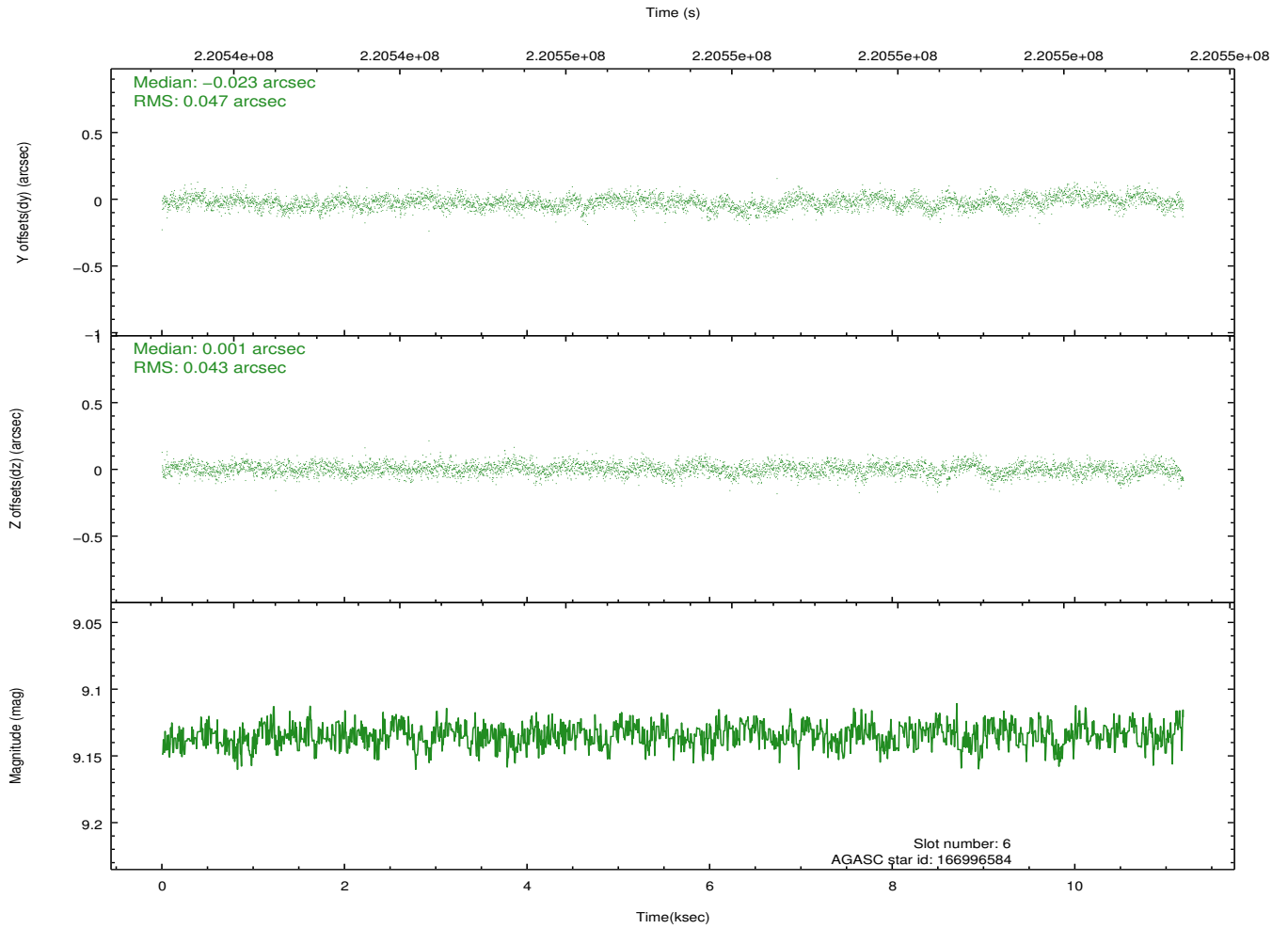
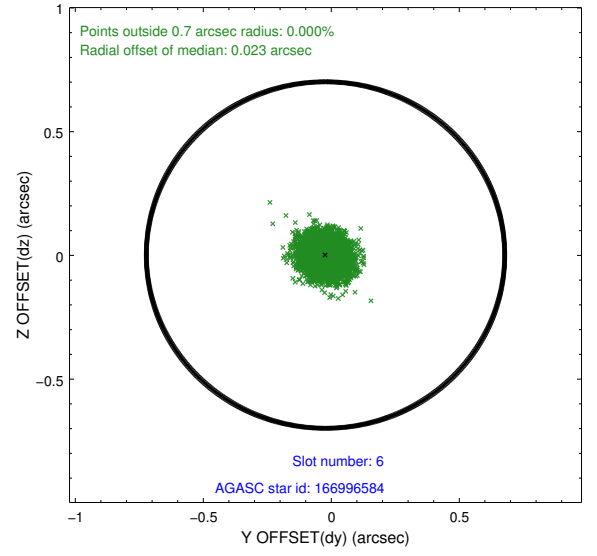
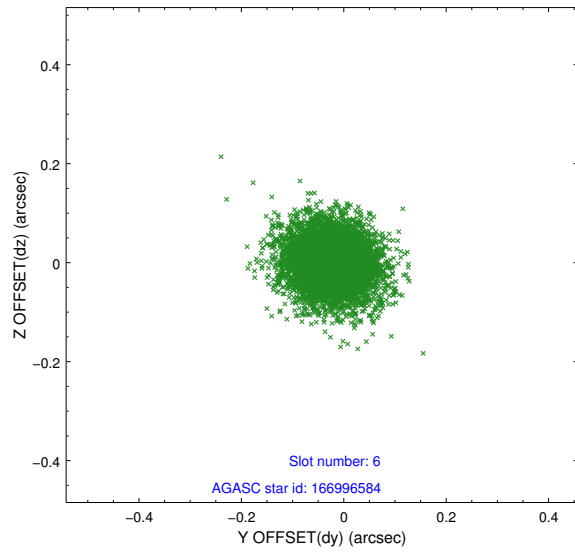
2.4.2 Slot 4



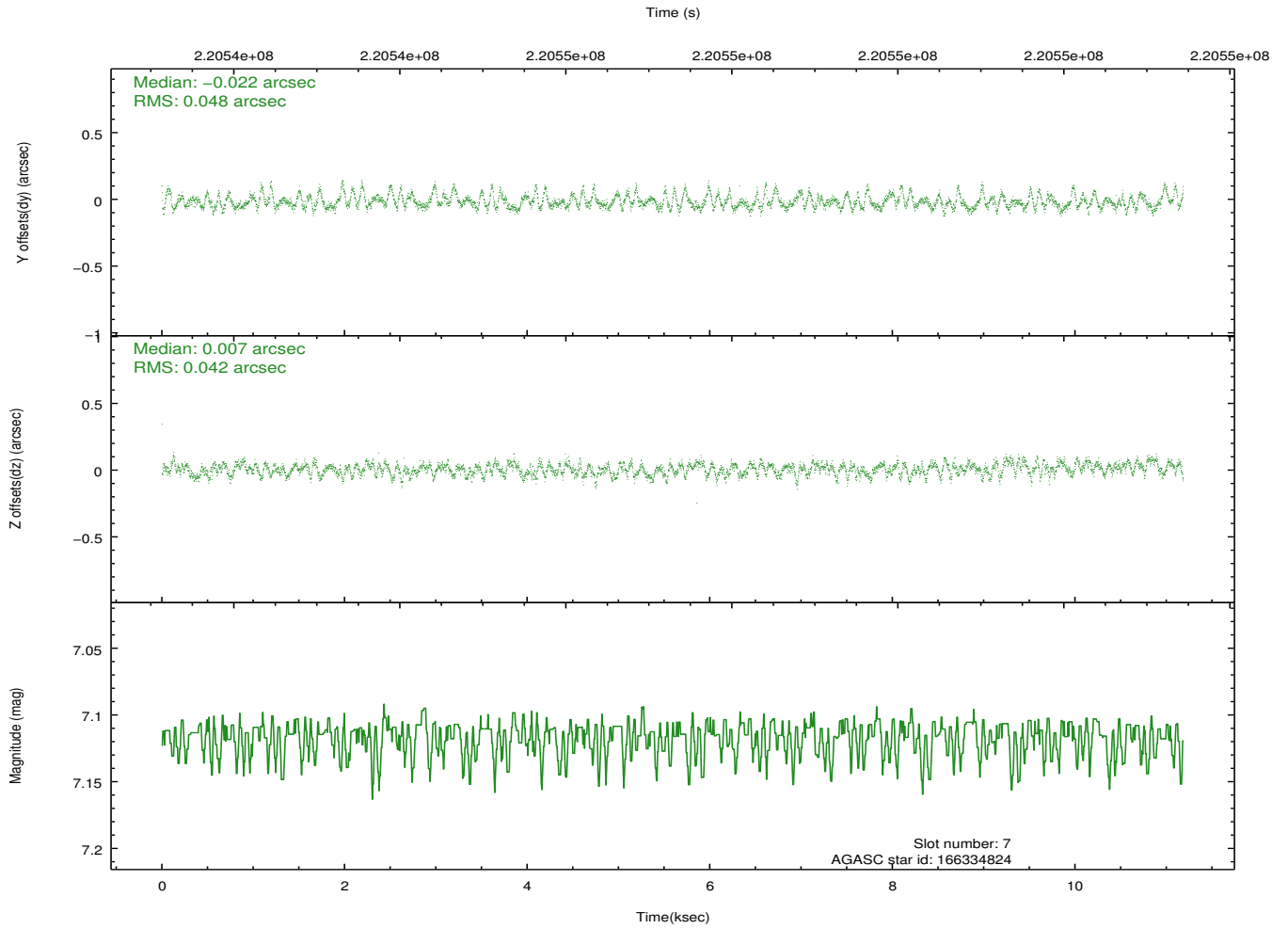
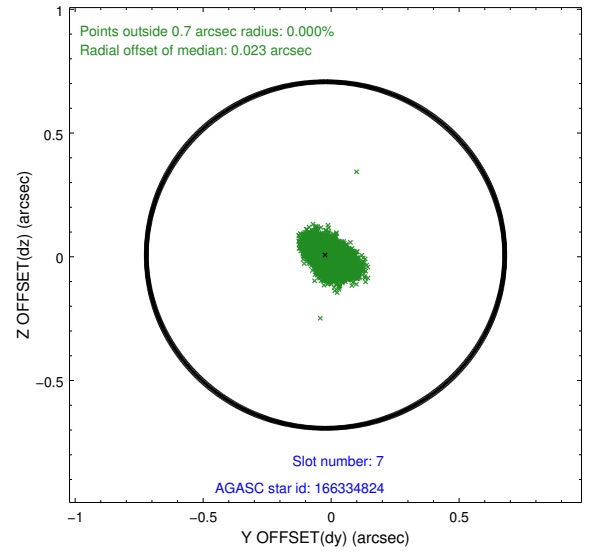
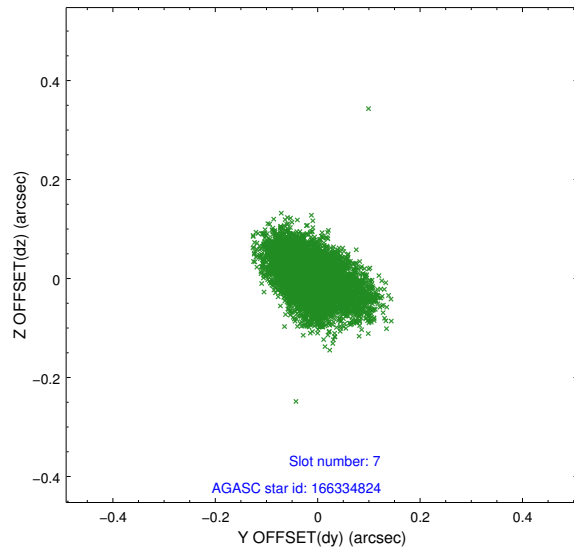
2.4.3 Slot 5



2.4.4 Slot 6

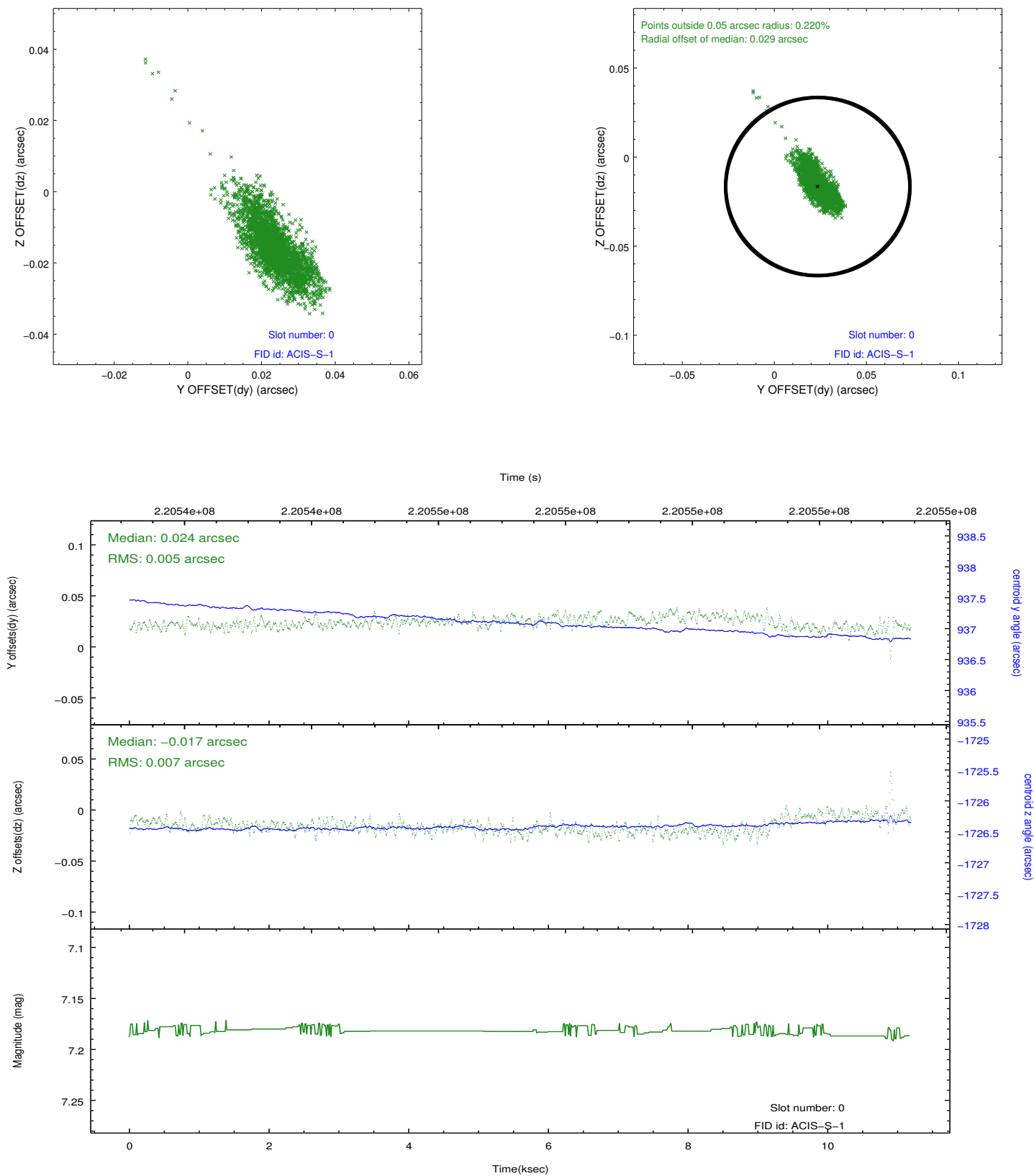


2.4.5 Slot 7

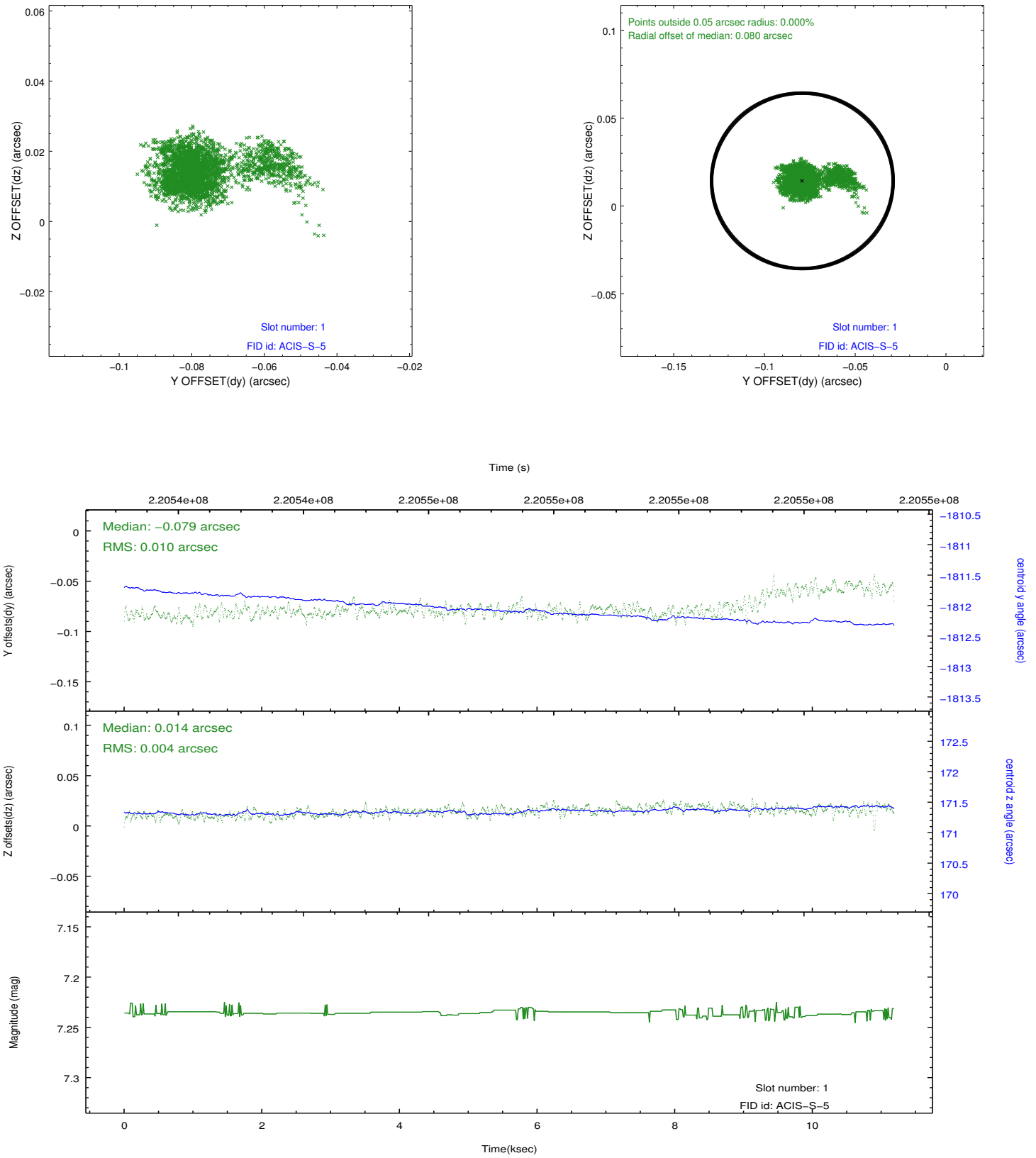


2.5 FID Slots

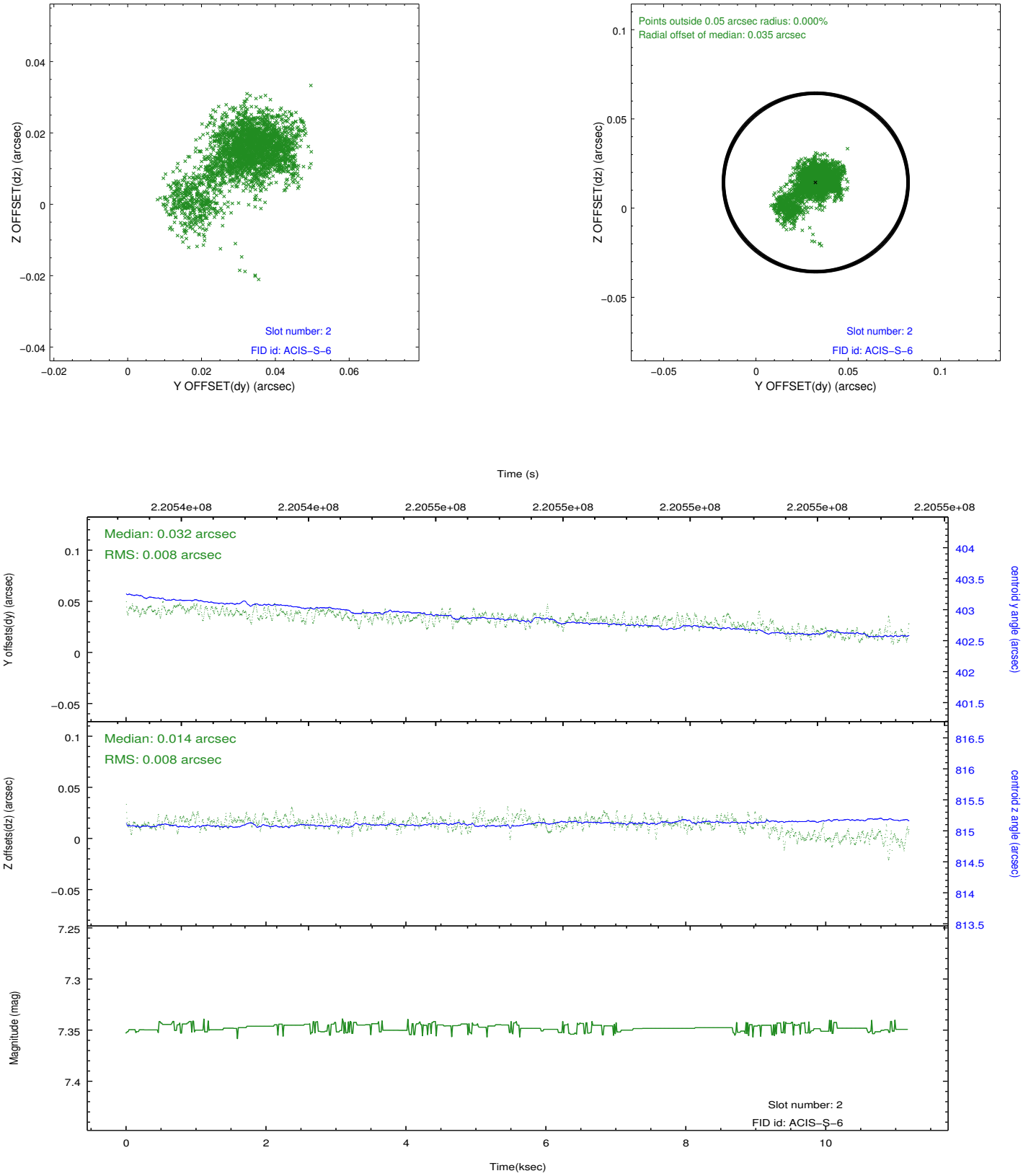
2.5.1 Slot 0



2.5.2 Slot 1



2.5.3 Slot 2



A Summary

A.1 Status

V&V Scientist	Jen Lauer
V&V Date (YYYY-MM-DD)	2013.01.08
V&V Edition	1
V&V Disposition and Status	OK
V&V Charge Time	11.02399

A.2 Comments