

# V&V Reference Report

## L2 ASCDS Version : 7.6.7.2

Observation 5355 - L2 Version 001  
Chandra X-Ray Center

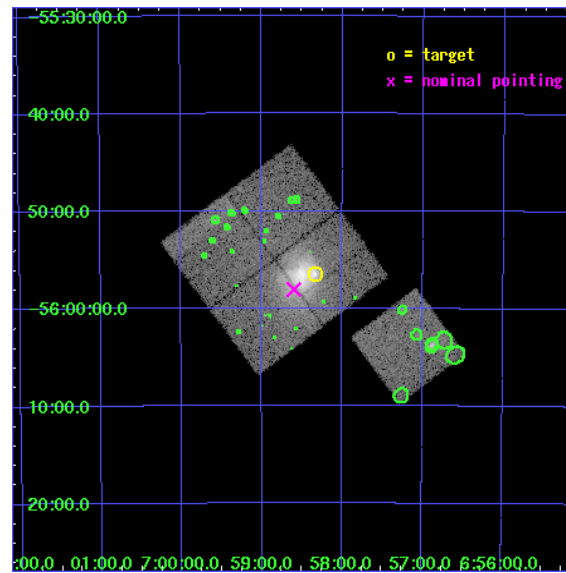
L2 Processing Date : Apr 26 2006

## Contents

<b>1</b>	<b>Front</b>	<b>2</b>
<b>2</b>	<b>OBI</b>	<b>3</b>
2.1	OBI . . . . .	3
2.1.1	Images . . . . .	3
2.1.2	Bias . . . . .	3
2.1.3	Parameters . . . . .	4
2.1.4	Events . . . . .	4
2.2	Compared Parameters . . . . .	5
2.3	Aspect . . . . .	6
2.4	Star Slots . . . . .	9
2.4.1	Slot 3 . . . . .	9
2.4.2	Slot 4 . . . . .	10
2.4.3	Slot 5 . . . . .	11
2.4.4	Slot 6 . . . . .	12
2.4.5	Slot 7 . . . . .	13
2.5	FID Slots . . . . .	14
2.5.1	Slot 0 . . . . .	14
2.5.2	Slot 1 . . . . .	15
2.5.3	Slot 2 . . . . .	16
<b>3</b>	<b>Point Sources</b>	<b>17</b>
<b>A</b>	<b>Summary</b>	<b>18</b>
A.1	Status . . . . .	18
A.2	Comments . . . . .	18

# 1 Front

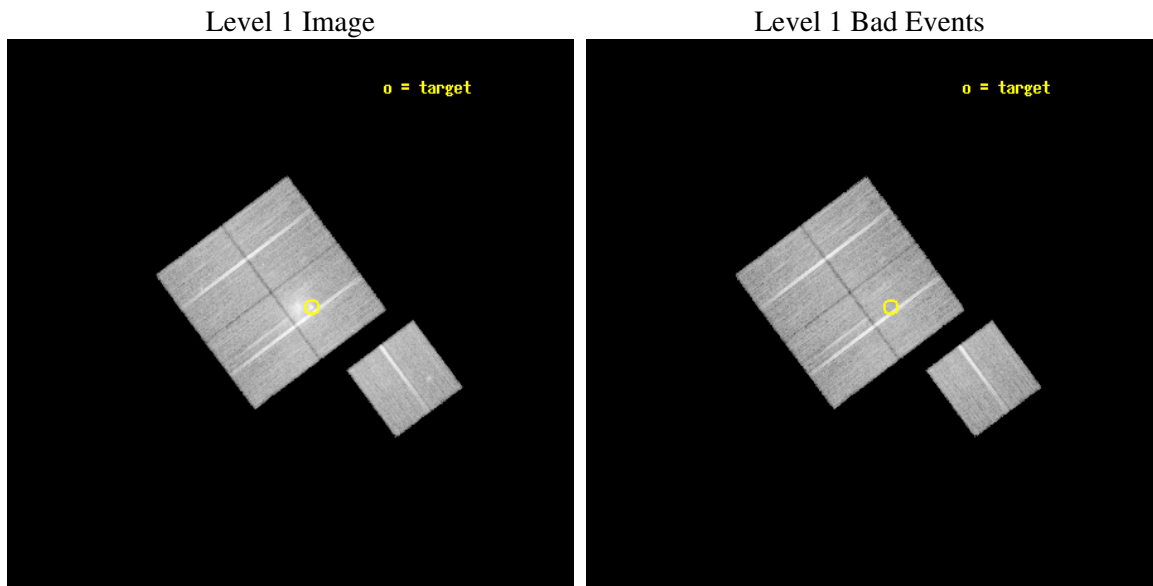
seq_num	800429
obs_id	5355
title	THE MOST INTERESTING CLUSTER IN THE UNIVERSE
observer	Dr Maxim Markevitch
object	1E0657-56
dtcycle	0
cycle	P
ra_targ	104.5827
dec_targ	-55.9415
ra_nom	104.64990734689
dec_nom	-55.967593817494
roll_nom	143.26436960001
revision	2
ontime	27772.8999466
livetime	27410.026562686
ontime0	27772.8999466
ontime1	27760.336025804
ontime2	27772.8999466
ontime3	27769.758986354
ontime6	27769.75897637
l2events	117809



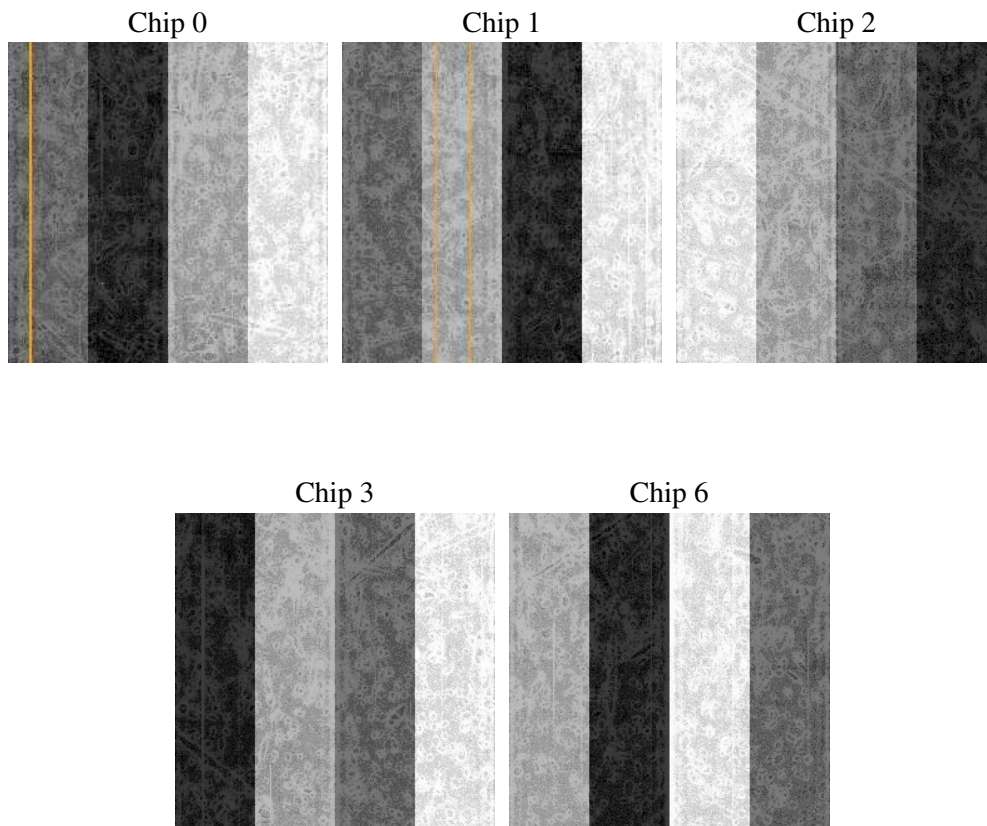
## 2 OBI

### 2.1 OBI

#### 2.1.1 Images



#### 2.1.2 Bias



### 2.1.3 Parameters

obi_num	0
ascdsver	7.6.7.2
caldbver	3.2.1
date	2006-04-26T19:02:06
revision	2

sched_exp_time	27631.081000
ontime	29541.130693913
ontime0	29541.130743742
ontime1	29528.566793054
ontime2	29541.130693913
ontime3	29537.989763558
ontime6	29537.98974362
l1events	938704

### 2.1.4 Events

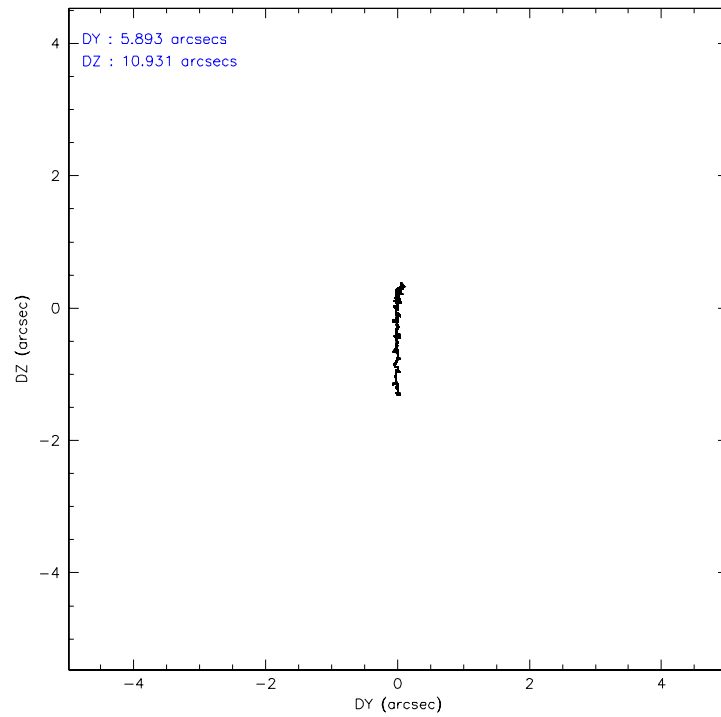
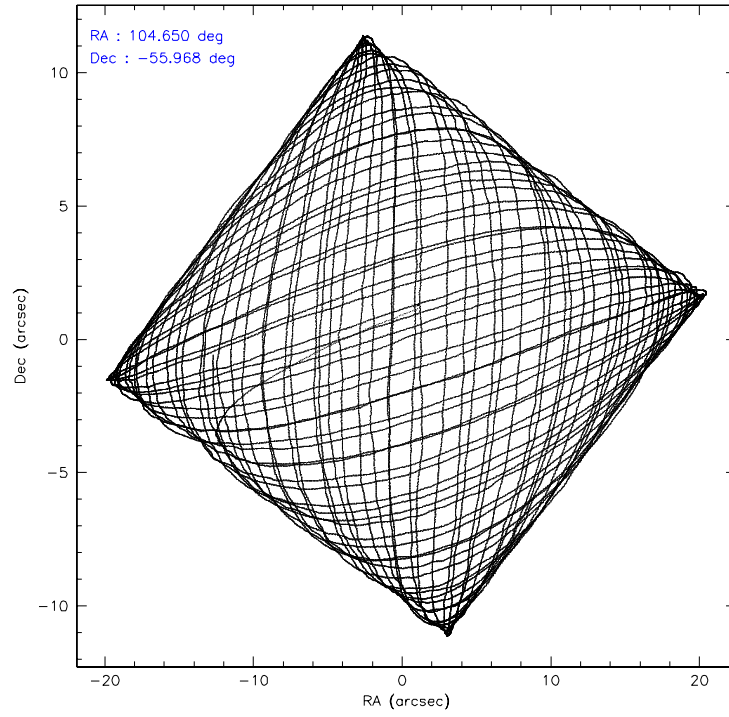
	ccd 0	ccd 1	ccd 2	ccd 3	ccd 6
level 1 events	172496	173447	220089	189543	183129
rejected events	153529	152126	169520	165897	162876
rejected %	89%	87%	77%	87%	88%

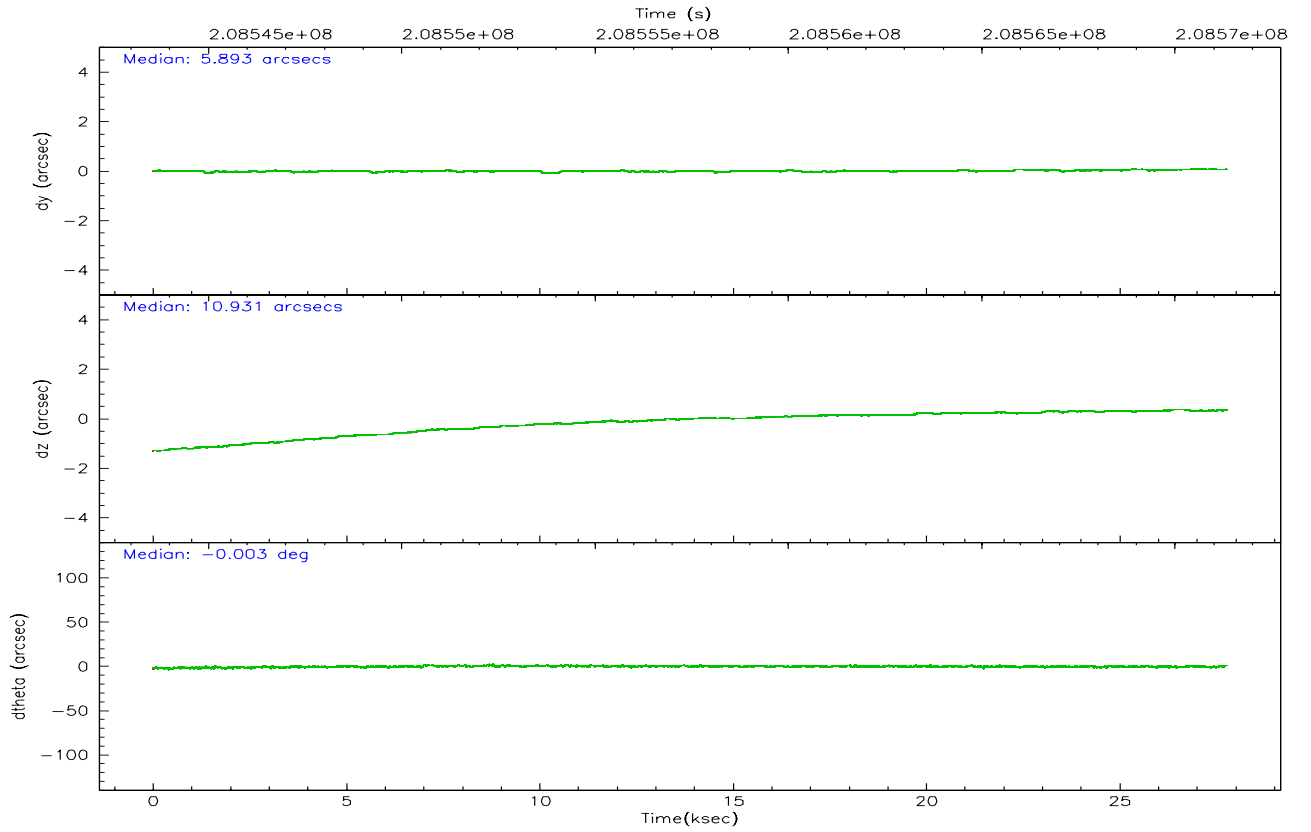
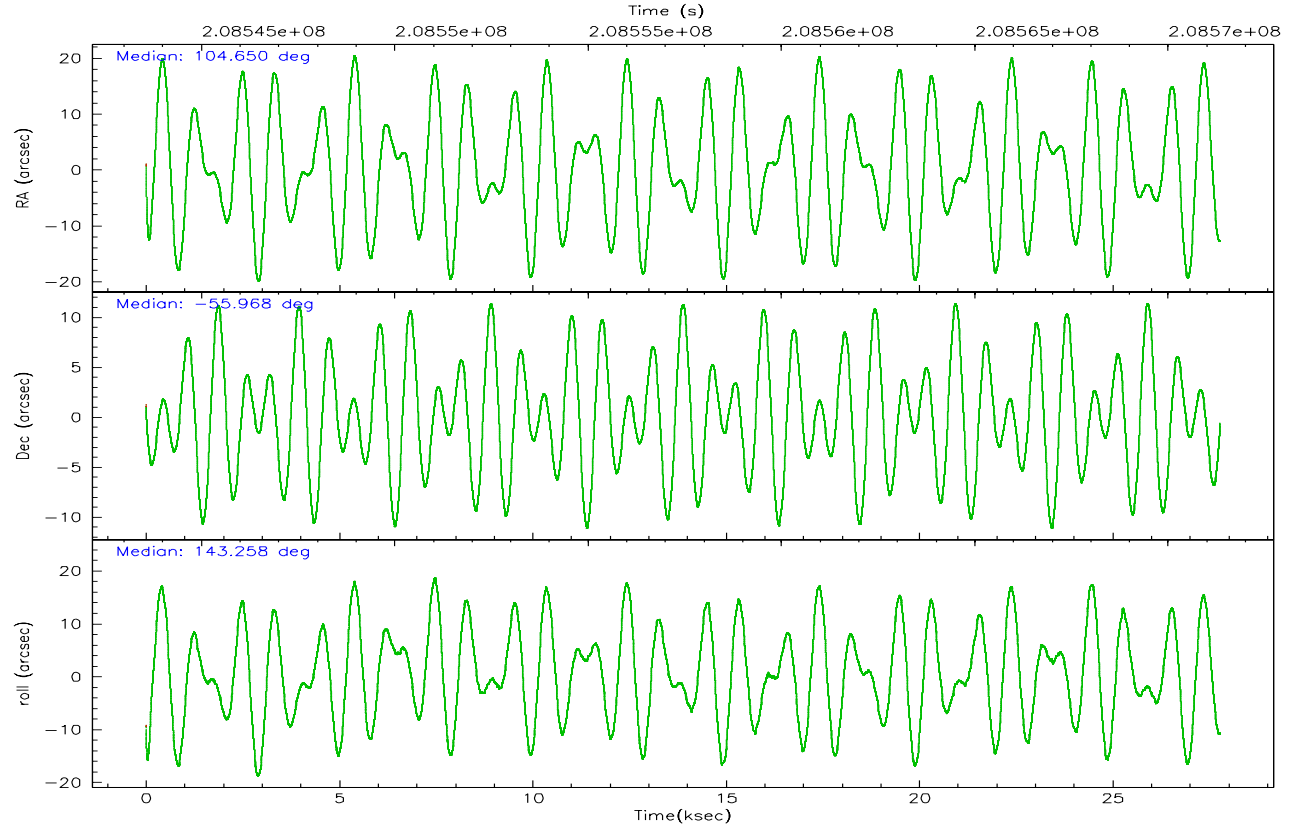
	ccd 0	ccd 1	ccd 2	ccd 3	ccd 6
grade 0 events	7915	9101	34558	12233	9022
	4%	5%	15%	6%	4%
grade 1 events	97	93	259	127	90
	0%	0%	0%	0%	0%
grade 2 events	4402	4630	7423	4415	4279
	2%	2%	3%	2%	2%
grade 3 events	2186	2331	2944	2249	2112
	1%	1%	1%	1%	1%
grade 4 events	1997	2261	2898	2226	2104
	1%	1%	1%	1%	1%
grade 5 events	6172	6619	6140	7038	7081
	3%	3%	2%	3%	3%
grade 6 events	3553	4216	4121	3618	3854
	2%	2%	1%	1%	2%
grade 7 events	146174	144196	161746	157637	154587
	84%	83%	73%	83%	84%

## 2.2 Compared Parameters

Parameter	Planned	Actual	Parameter	Planned	Actual
Instrument	ACIS	ACIS	Obspar format version number	6	6
Detector	ACIS-01236	ACIS-01236	Obspar file type	PREDICTED	ACTUAL
Grating	NONE	NONE	Obspar update status	NONE	UPDATED
Data mode	VFAINT	VFAINT	On-chip summing requested	N	N
Observation mode	POINTING	POINTING	Subarray requested	NONE	NONE
Pointing RA	104.698490	104.6499073468928	Alternating exposures requested	N	N
Pointing Dec	-55.970654	-55.96759381749374	Primary exposure time	0.000000	3.1
Pointing Roll	143.095949	143.2643696000132			
SIM focus pos (mm)	-0.782348	-0.7809083437167272			
SIM defocus (mm)	0	0.001439871863259334			
SIM translation stage pos (mm)	-224.592463	-224.5962429424501			
SIM translation stage offset (mm)	-9	-8.996210060479569			
Observation start time	208543712.184000	208541800.68254			
Observation start date	2004-08-10T16:47:28	2004-08-10T16:16:40			
Observation end time	208571343.184000	208571574.37137			
Observation end date	2004-08-11T00:27:59	2004-08-11T00:32:54			
Read mode	TIMED	TIMED			

## 2.3 Aspect





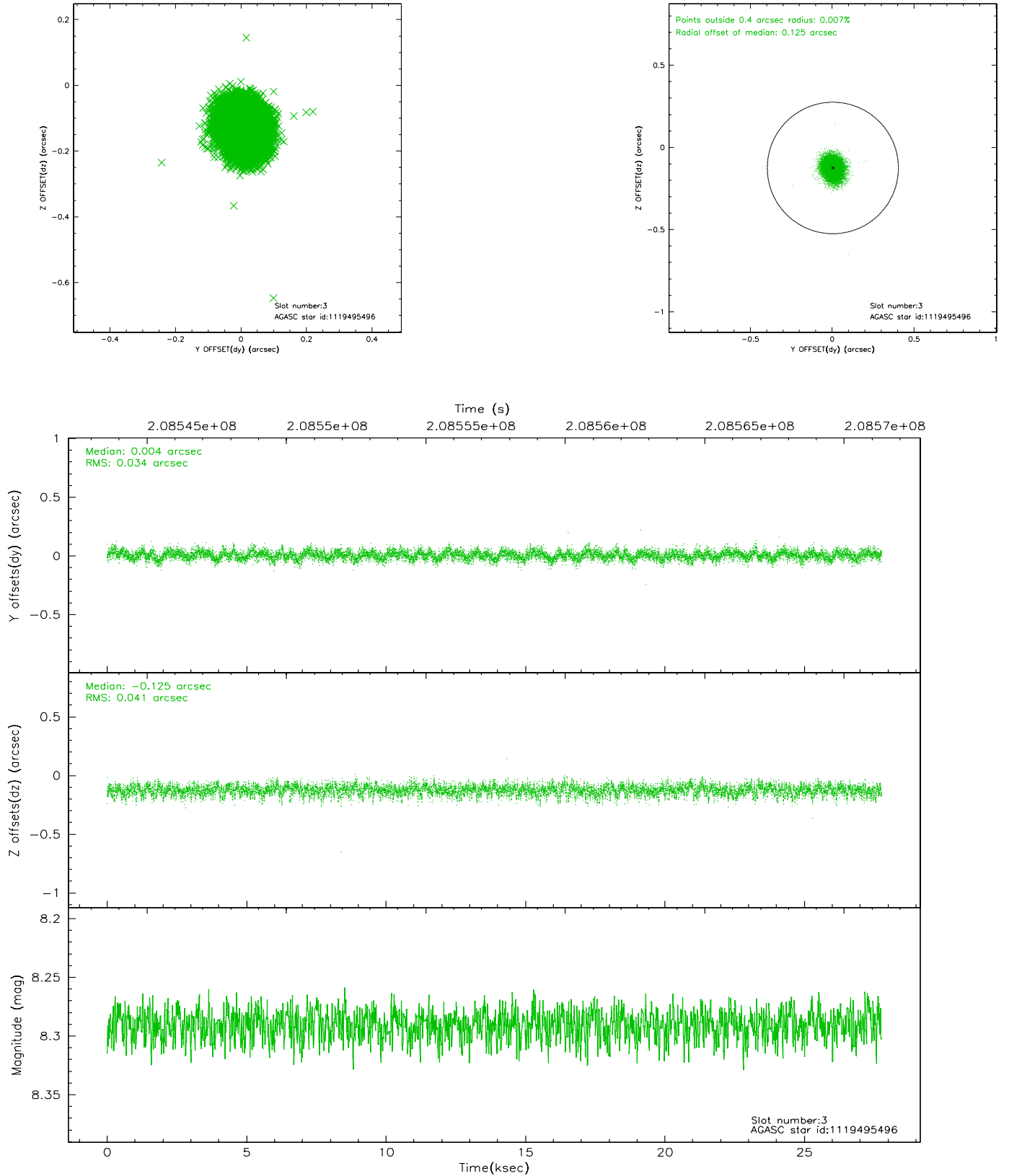
### Slot Statistics

slot	status	id	mag	n_pts	med_dy	med_dz	dr1	dr2	ra	dec	mean_y	mean_z
0	FID	ACIS-I-1	7.22	6777	0.123	-0.206	0.011	0.026	0.000000	0.000000	933.78	-1019.14
1	FID	ACIS-I-4	7.14	6776	-0.047	0.108	0.010	0.021	0.000000	0.000000	2153.18	882.05
2	FID	ACIS-I-5	7.21	6777	-0.174	0.169	0.007	0.013	0.000000	0.000000	-1814.41	878.90
3	GUIDE	1119495496	8.29	13551	0.004	-0.125	0.056	0.092	104.298364	-55.915101	764.41	326.73
4	GUIDE	1119495968	7.06	13553	-0.078	0.057	0.060	0.094	105.873528	-55.948238	-1857.19	-1470.88
5	GUIDE	1119496704	7.85	13547	0.096	0.083	0.068	0.109	104.368364	-55.667750	1190.06	-468.02
6	GUIDE	1119500592	8.70	13552	0.046	0.086	0.084	0.143	105.814889	-55.642715	-1114.90	-2291.30
7	GUIDE	1120026344	6.71	13552	-0.070	-0.093	0.062	0.103	104.651539	-56.394853	-842.29	1277.28

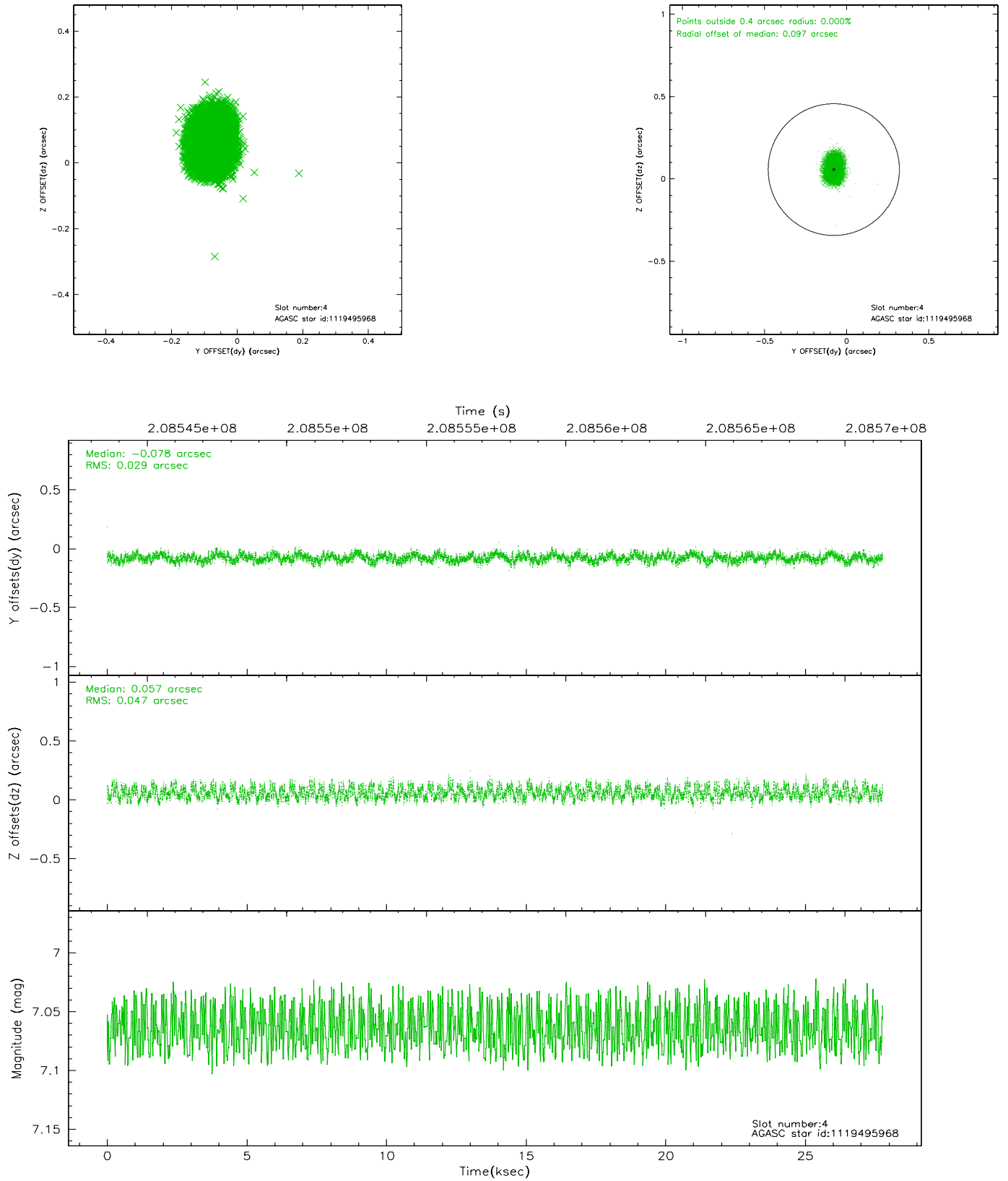


## 2.4 Star Slots

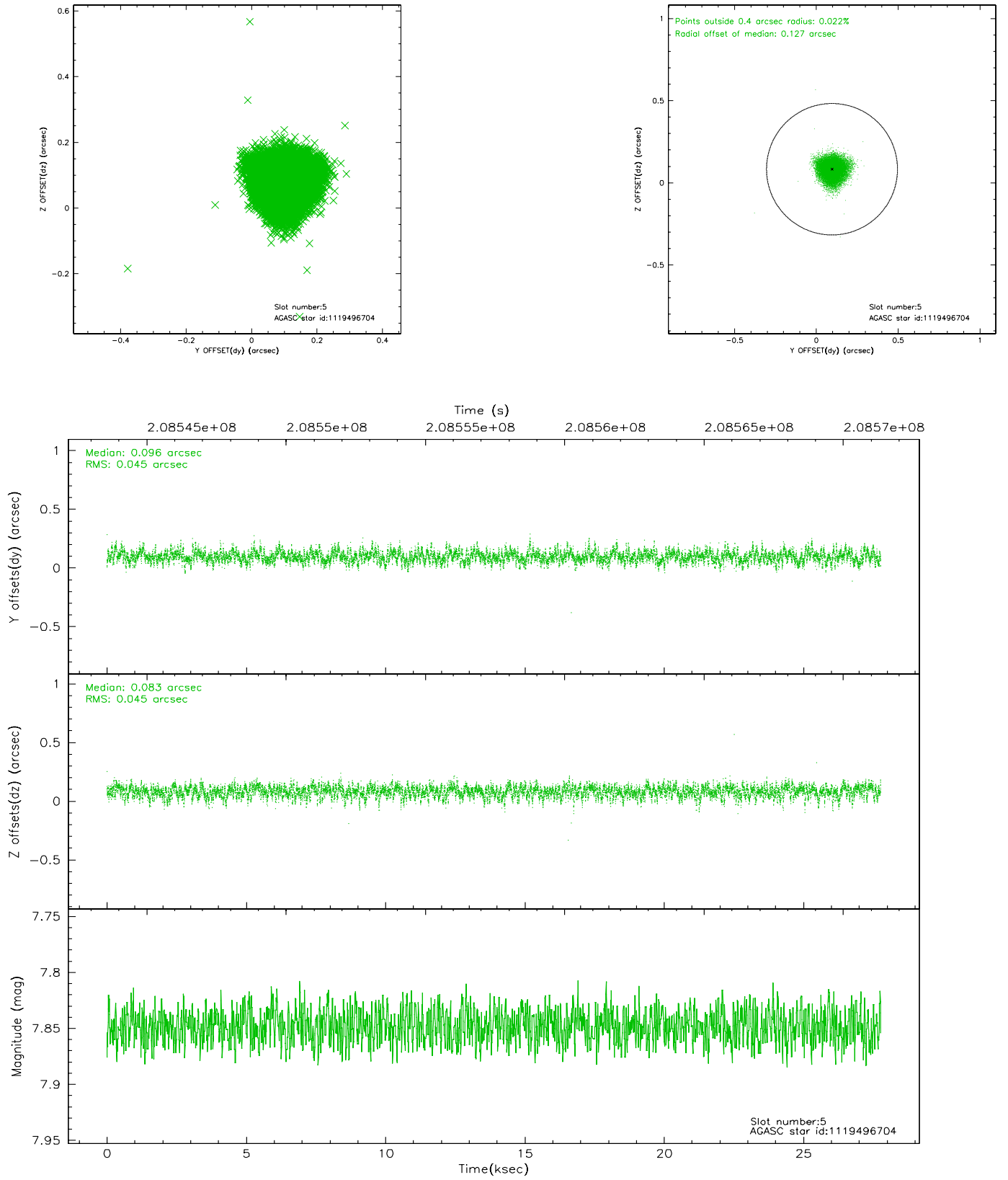
### 2.4.1 Slot 3



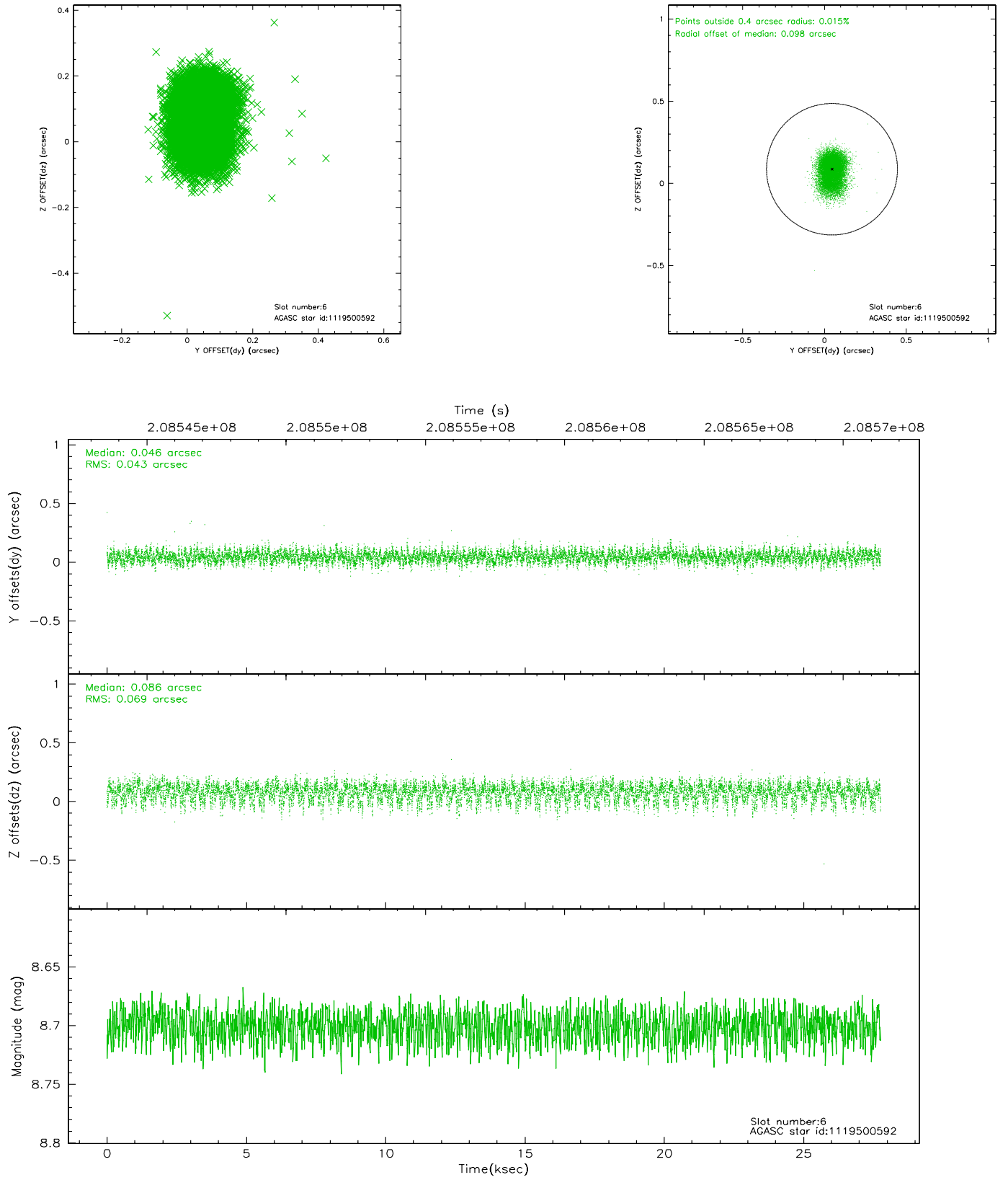
## 2.4.2 Slot 4



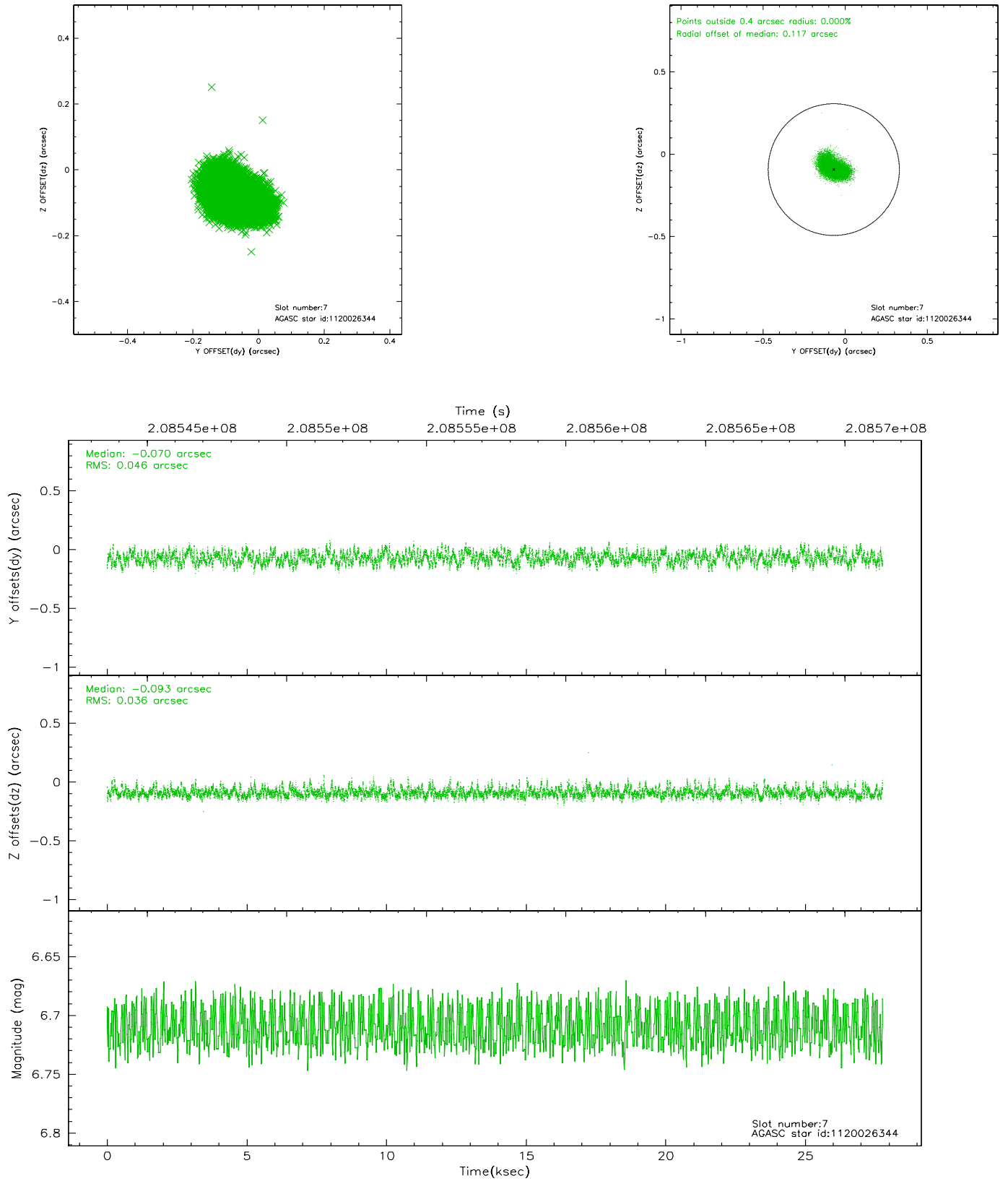
### 2.4.3 Slot 5



## 2.4.4 Slot 6

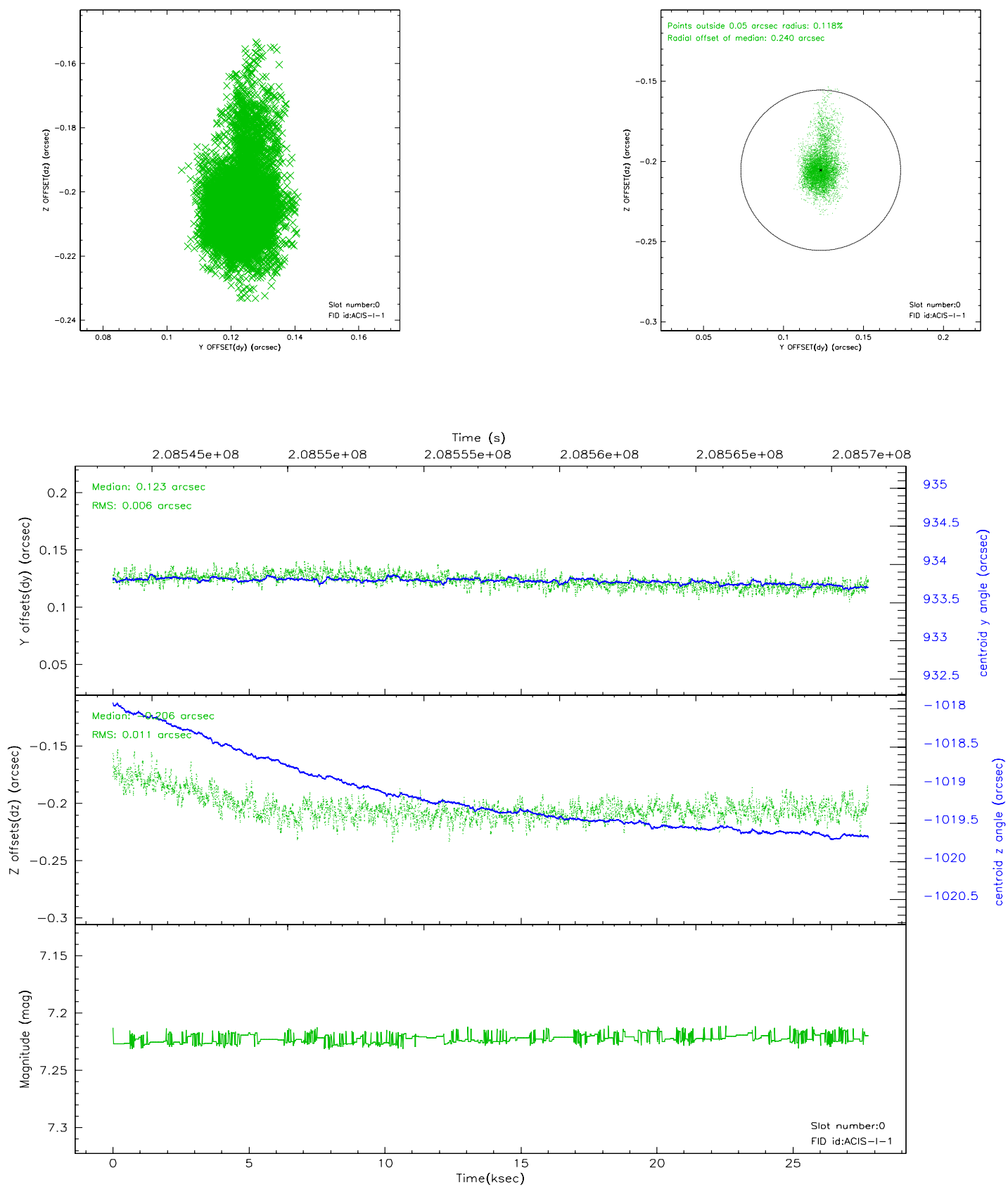


## 2.4.5 Slot 7

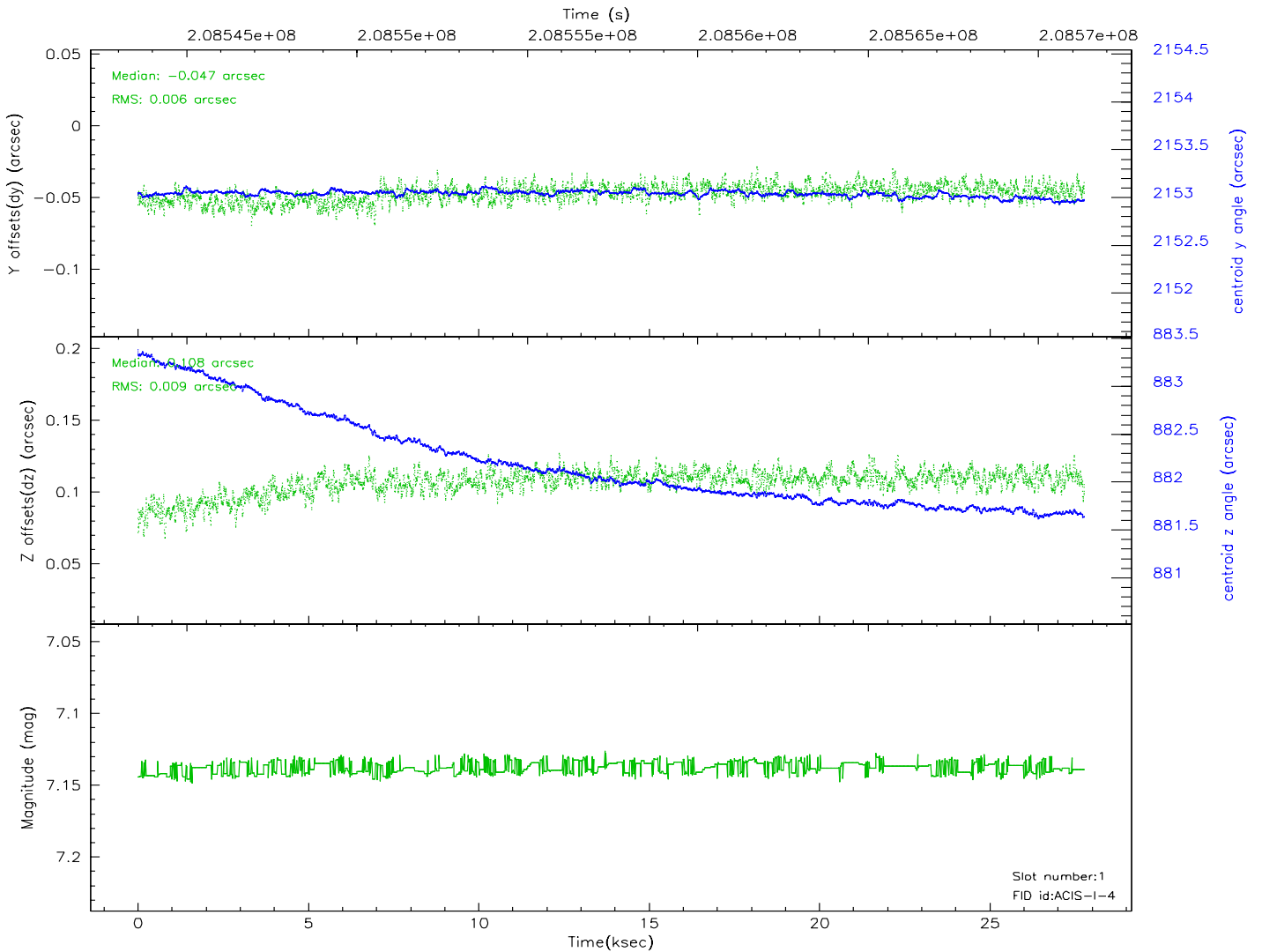
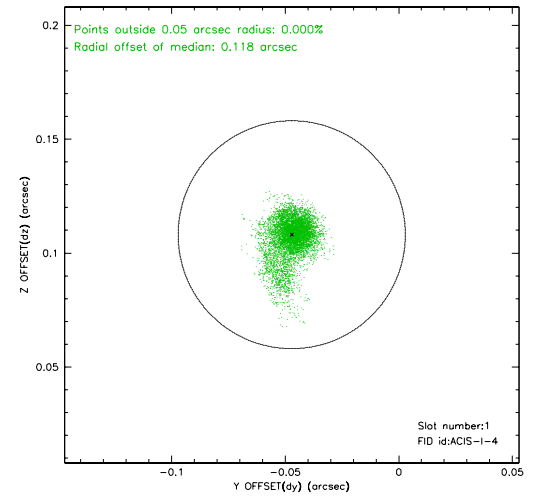
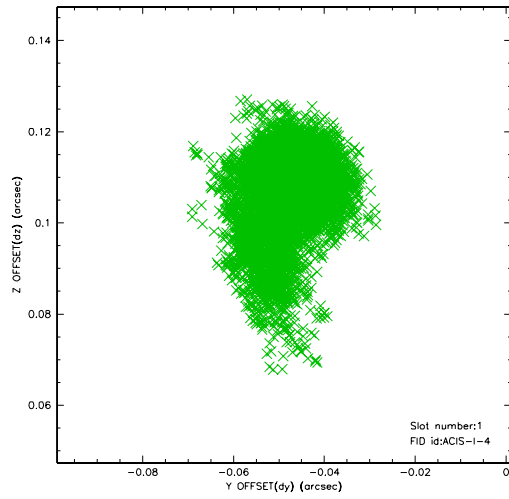


## 2.5 FID Slots

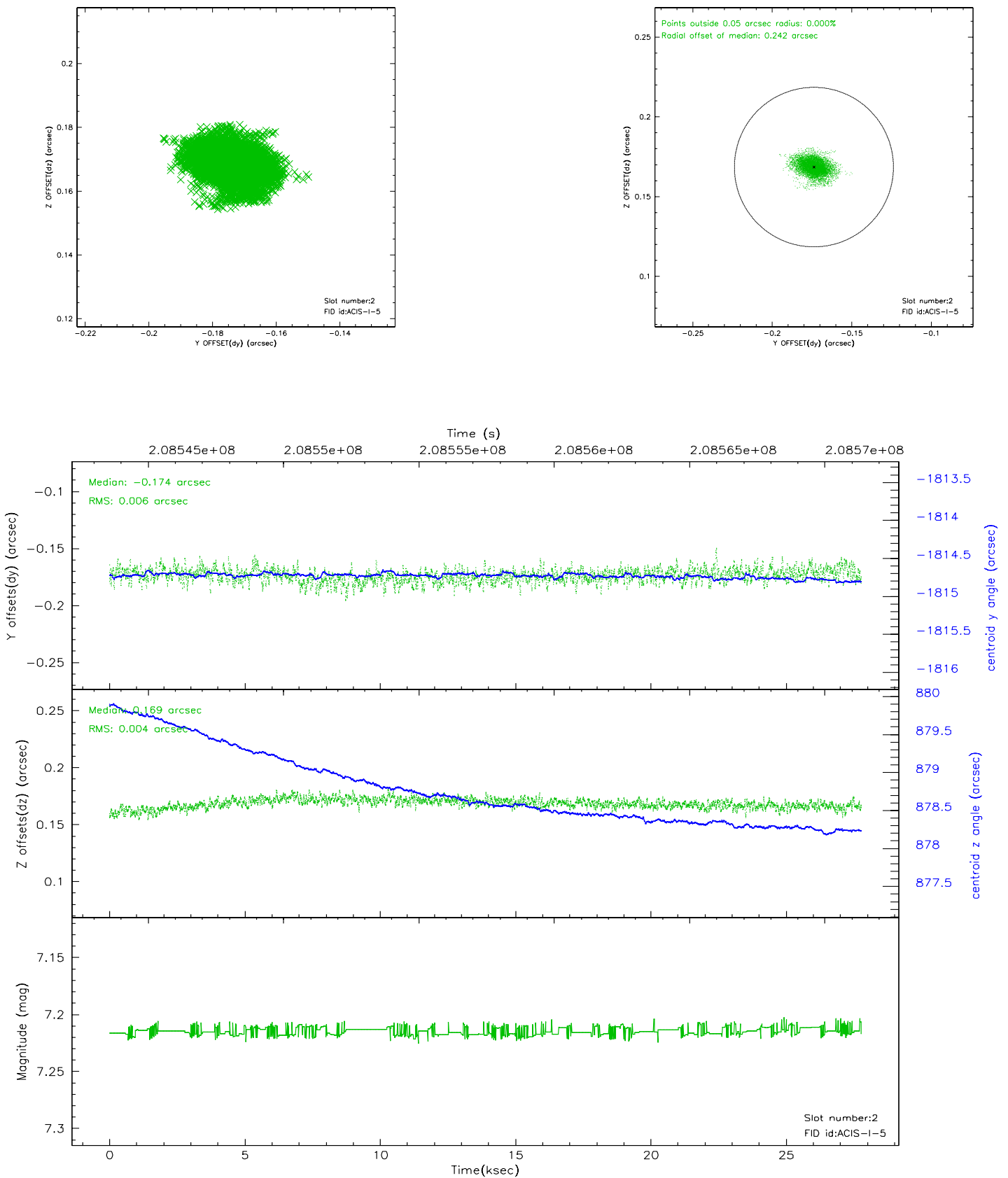
### 2.5.1 Slot 0



## 2.5.2 Slot 1

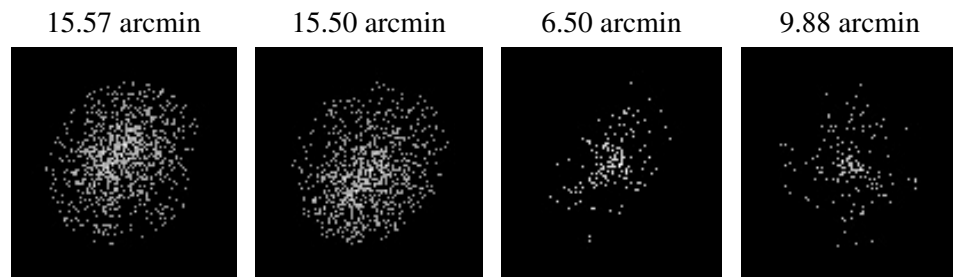


### 2.5.3 Slot 2





### 3 Point Sources



## A Summary

### A.1 Status

V&V Scientist	Jen Lauer
V&V Date (YYYY-MM-DD)	2006.04.27
V&V Edition	1
V&V Disposition and Status	OK
V&V Charge Time	27.772

### A.2 Comments