

V&V Reference Report

L2 ASCDS Version : 10.1

Observation 53275 - L2 Version 1
Chandra X-Ray Center

L2 Processing Date : Oct 27 2013

Contents

1	Front	2
2	OBI	3
2.1	OBI	3
2.1.1	Images	3
2.1.2	Bias	3
2.1.3	Parameters	4
2.1.4	Events	4
2.2	Compared Parameters	5
2.3	Star Slots	6
2.4	FID Slots	6
A	Summary	7
A.1	Status	7
A.2	Comments	7

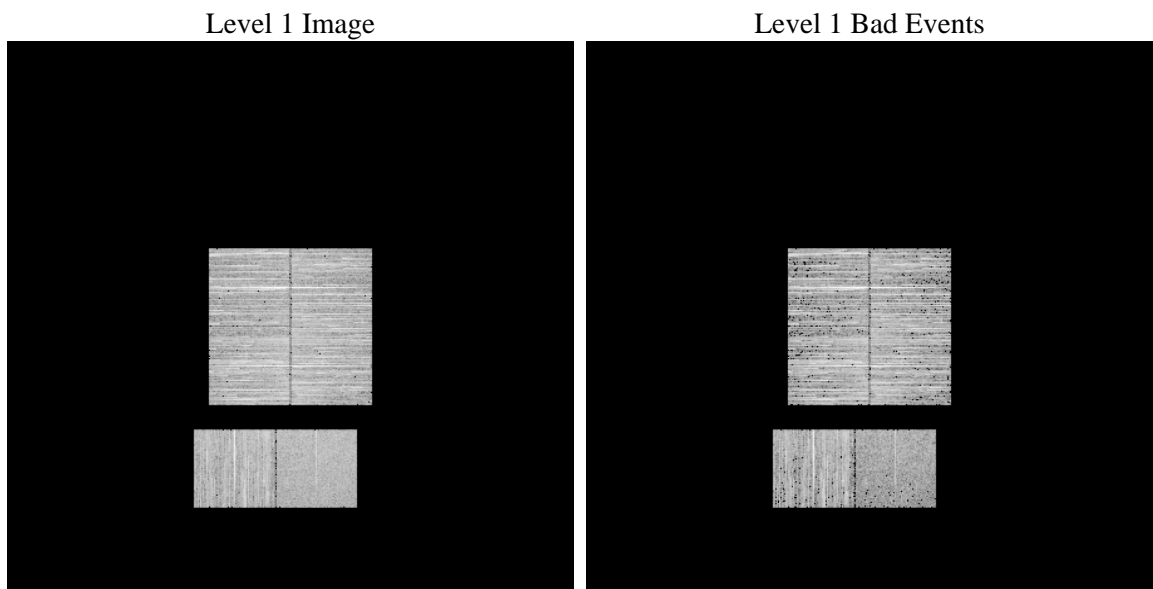
1 Front

seq_num	 	Sequence number
obs_id	53275	Observation id
title	ACIS-012367 diagnostics	Proposal title
observer	CHANDRA engineering request/realtime commanding	Principal investig
object	 	Source name
dtcycle	0	
cycle	P	events from which exps? Prim/Second/Both
ra_targ	0.0	Observer's specified target RA [deg]
dec_targ	0.0	Observer's specified target Dec [deg]
ra_nom	179.41758421633	Nominal RA [deg]
dec_nom	32.851008708481	Nominal Dec [deg]
roll_nom	39.39495862529	Nominal Roll [deg]
revision	1	Processing version of data
ontime	3827.1301527023	Sum of GTIs [s]
livetime	3778.6687262877	Livetime [s]
ontime0	3726.7022979259	Sum of GTIs [s]
ontime1	3729.9722105265	Sum of GTIs [s]
ontime2	3717.0078913569	Sum of GTIs [s]
ontime3	3713.6562569737	Sum of GTIs [s]
ontime6	3726.7310113311	Sum of GTIs [s]
ontime7	3827.1301527023	Sum of GTIs [s]
l2events	88297	Number of level 2 events

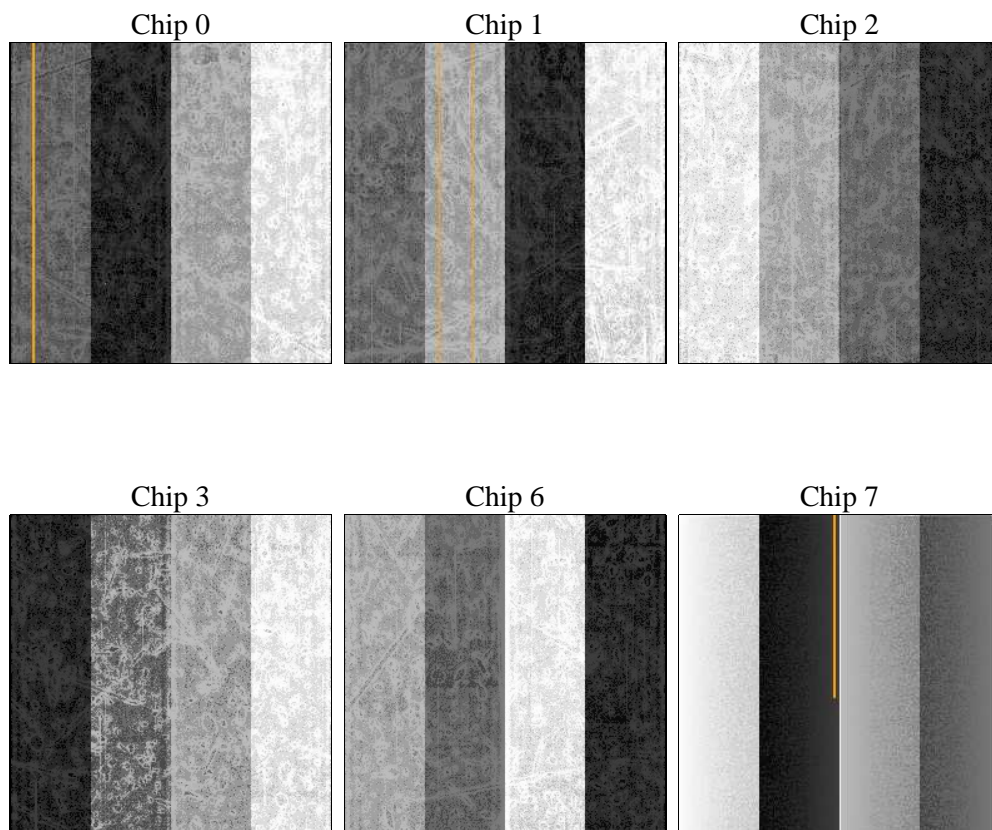
2 OBI

2.1 OBI

2.1.1 Images



2.1.2 Bias



2.1.3 Parameters

obi_num	1	Obi number	sched_exp_time	0.0	[s] Scheduled observation exposure time
ascdsver	10.1	Processing system revision	ontime	3827.1301527023	Sum of GTIs [s]
caldsver	4.5.8	 	ontime0	3726.7022979259	Sum of GTIs [s]
date	2013-10-27T21:51:57	Date and time of file creation	ontime1	3729.9722105265	Sum of GTIs [s]
revision	1	Processing version of data	ontime2	3717.0078913569	Sum of GTIs [s]
			ontime3	3713.6562569737	Sum of GTIs [s]
			ontime6	3726.7310113311	Sum of GTIs [s]
			ontime7	3827.1301527023	Sum of GTIs [s]
			l1events	397272	Number of level 1 events

2.1.4 Events

	ccd 0	ccd 1	ccd 2	ccd 3	ccd 6	ccd 7		ccd 0	ccd 1	ccd 2	ccd 3	ccd 6	ccd 7
level 1 events	66641	66452	73467	70785	62772	57155	grade 0 events	6973	6648	6885	7087	6928	3699
rejected events	53025	52956	60106	57261	48709	31273		10%	10%	9%	10%	11%	6%
rejected %	79%	79%	81%	80%	77%	54%	grade 1 events	34	35	44	39	33	47
								0%	0%	0%	0%	0%	0%
							grade 2 events	2726	2810	2568	2446	2856	6339
								4%	4%	3%	3%	4%	11%
							grade 3 events	912	891	935	950	917	2097
								1%	1%	1%	1%	1%	3%
							grade 4 events	910	911	922	956	883	2072
								1%	1%	1%	1%	1%	3%
							grade 5 events	1199	1377	1226	1452	1396	3448
								1%	2%	1%	2%	2%	6%
							grade 6 events	2095	2236	2051	2085	2479	11675
								3%	3%	2%	2%	3%	20%
							grade 7 events	51792	51544	58836	55770	47280	27778
								77%	77%	80%	78%	75%	48%

2.2 Compared Parameters

Parameter	Planned	Actual	Parameter	Planned	Actual
Instrument	ACIS	ACIS	Obspar format version number	7	7
Detector	ACIS-012367	ACIS-012367	Obspar file type	PREDICTED	ACTUAL
Grating	NONE	NONE	Obspar update status	NONE	UPDATED
Data mode	FAINT	FAINT	Number of optional ACIS chips dropped	0	0
Observation mode	SECONDARY	SECONDARY	On-chip summing requested	N	N
[deg] Pointing RA	0	179.4175842163308	Subarray requested	NONE	NONE
[deg] Pointing Dec	0	32.85100870848116	Alternating exposures requested	N	N
[deg] Pointing Roll	0.0	39.39495862528964	[s] Primary exposure time	3.2	3.2
[mm] SIM focus pos	-1.429586	-1.428180813131781			
[mm] SIM defocus	0.1037507710433287	0.1051558262725154			
[mm] SIM translation stage pos	250.455976	250.466033080201			
[mm] SIM translation stage offset	0	-0.01005468664627074			
[s] Observation start time (MET)	499241513.382536	499241512.35754			
Observation start date	2013-10-27T06:11:53	2013-10-27T06:11:52			
[s] Observation end time (MET)	499248376.782912	499248375.75791			
Observation end date	2013-10-27T08:06:17	2013-10-27T08:06:15			
Read mode	TIMED	TIMED			

2.3 Star Slots

2.4 FID Slots

A Summary

A.1 Status

V&V Scientist	Jen Lauer
V&V Date (YYYY-MM-DD)	2013.10.28
V&V Edition	1
V&V Disposition and Status	OK
V&V Charge Time	3.8271301527023

A.2 Comments