

V&V Reference Report

L2 ASCDS Version : 10.2.1

Observation 53045 - L2 Version 1
Chandra X-Ray Center

L2 Processing Date : Feb 2 2014

Contents

1	Front	2
2	OBI	3
2.1	OBI	3
2.1.1	Images	3
2.1.2	Bias	3
2.1.3	Parameters	4
2.1.4	Events	4
2.2	Compared Parameters	5
2.3	Star Slots	6
2.4	FID Slots	6
A	Summary	7
A.1	Status	7
A.2	Comments	7

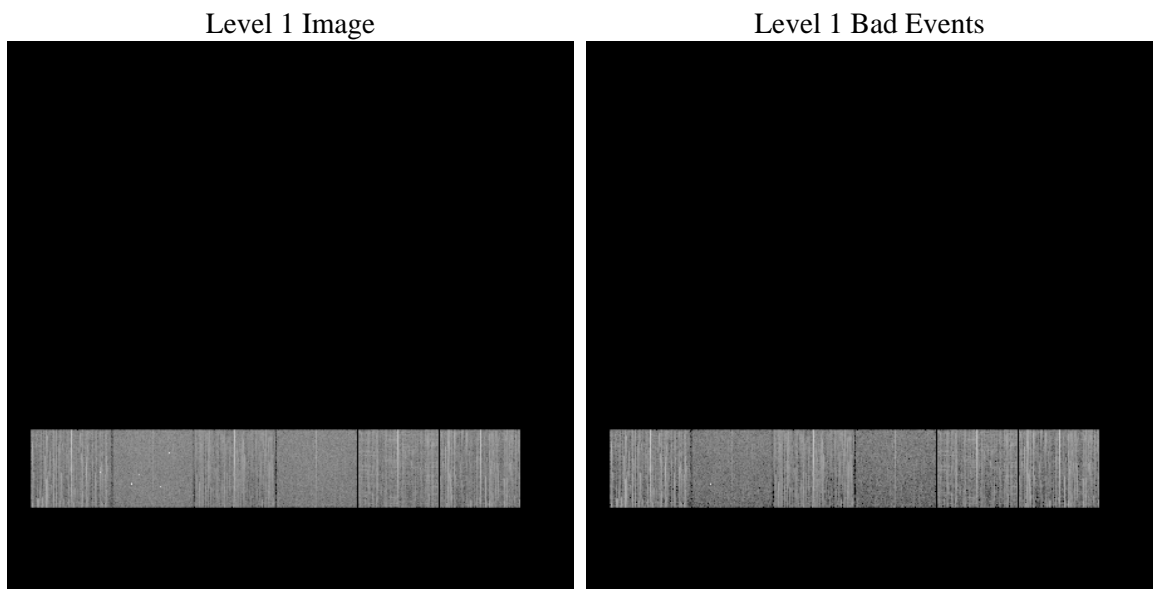
1 Front

seq_num	 	Sequence number
obs_id	53045	Observation id
title	ACIS-456789 diagnostics	Proposal title
observer	CHANDRA engineering request/realtime commanding	Principal investig
object	 	Source name
dtcycle	0	
cycle	P	events from which exps? Prim/Second/Both
ra_targ	0.0	Observer's specified target RA [deg]
dec_targ	0.0	Observer's specified target Dec [deg]
ra_nom	136.02380430599	Nominal RA [deg]
dec_nom	-7.1743274794499	Nominal Dec [deg]
roll_nom	2.2400904596403	Nominal Roll [deg]
revision	1	Processing version of data
ontime	5421.2445911765	Sum of GTIs [s]
livetime	5352.5975278814	Livetime [s]
ontime4	5423.9999798536	Sum of GTIs [s]
ontime5	5423.9999798536	Sum of GTIs [s]
ontime6	5423.9999798536	Sum of GTIs [s]
ontime7	5421.2445911765	Sum of GTIs [s]
ontime8	5423.9999798536	Sum of GTIs [s]
ontime9	5421.203561306	Sum of GTIs [s]
l2events	138435	Number of level 2 events

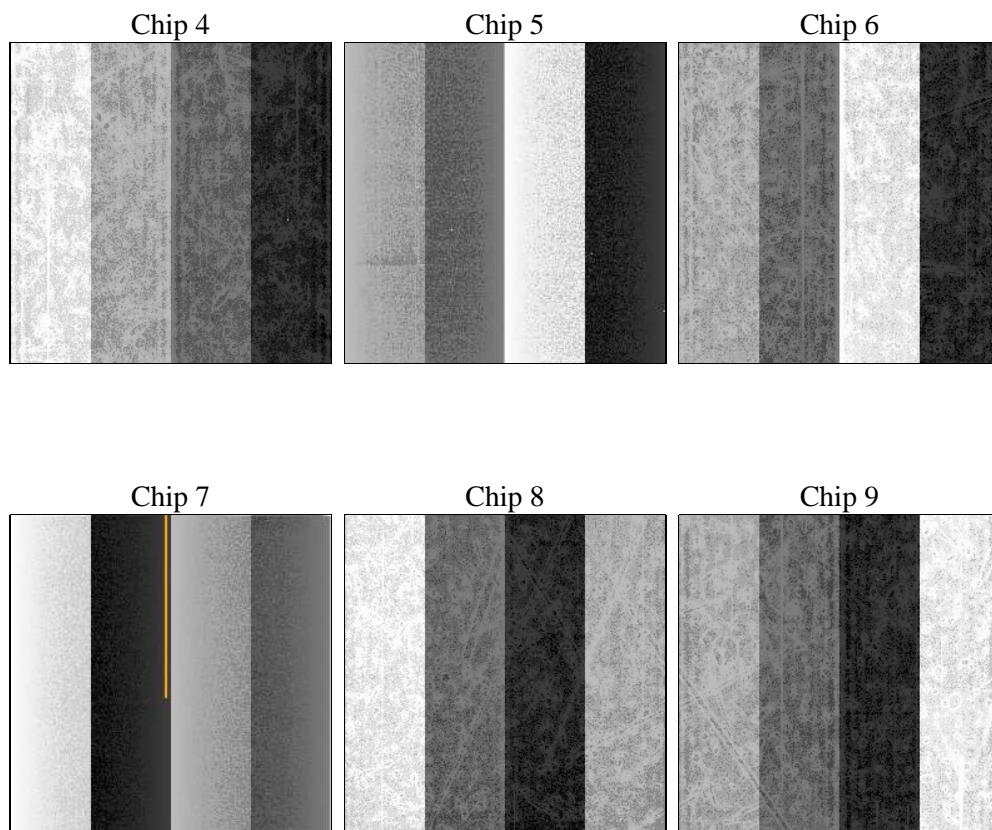
2 OBI

2.1 OBI

2.1.1 Images



2.1.2 Bias



2.1.3 Parameters

obi_num	0	Obi number	sched_exp_time	0.0	[s] Scheduled observation exposure time
ascdsver	10.2.1	Processing system revision	ontime	5421.2445911765	Sum of GTIs [s]
caldsver	4.6.0	 	ontime4	5423.9999798536	Sum of GTIs [s]
date	2014-02-02T16:02:01	Date and time of file creation	ontime5	5423.9999798536	Sum of GTIs [s]
revision	1	Processing version of data	ontime6	5423.9999798536	Sum of GTIs [s]
			ontime7	5421.2445911765	Sum of GTIs [s]
			ontime8	5423.9999798536	Sum of GTIs [s]
			ontime9	5421.203561306	Sum of GTIs [s]
			l1events	559213	Number of level 1 events

2.1.4 Events

	ccd 4	ccd 5	ccd 6	ccd 7	ccd 8	ccd 9		ccd 4	ccd 5	ccd 6	ccd 7	ccd 8	ccd 9
level 1 events	100763	86123	97610	78120	96061	100536	grade 0 events	10577	5209	9226	4963	11029	9286
rejected events	81472	47351	78666	43050	71743	82007		10%	6%	9%	6%	11%	9%
rejected %	80%	54%	80%	55%	74%	81%	grade 1 events	72	77	50	46	53	53
								0%	0%	0%	0%	0%	0%
							grade 2 events	3556	13996	3933	8588	4974	3677
								3%	16%	4%	10%	5%	3%
							grade 3 events	1290	1260	1296	2761	1865	1291
								1%	1%	1%	3%	1%	1%
							grade 4 events	1303	1308	1136	2875	1868	1302
								1%	1%	1%	3%	1%	1%
							grade 5 events	2003	4039	2023	4730	2622	2279
								1%	4%	2%	6%	2%	2%
							grade 6 events	2565	16999	3353	15883	4582	2973
								2%	19%	3%	20%	4%	2%
							grade 7 events	79397	43235	76593	38274	69068	79675
								78%	50%	78%	48%	71%	79%

2.2 Compared Parameters

Parameter	Planned	Actual	Parameter	Planned	Actual
Instrument	ACIS	ACIS	Obspar format version number	7	7
Detector	ACIS-456789	ACIS-456789	Obspar file type	PREDICTED	ACTUAL
Grating	NONE	NONE	Obspar update status	NONE	UPDATED
Data mode	FAINT	FAINT	Number of optional ACIS chips dropped	0	0
Observation mode	SECONDARY	SECONDARY	On-chip summing requested	N	N
[deg] Pointing RA	0	136.0238043059869	Subarray requested	NONE	NONE
[deg] Pointing Dec	0	-7.174327479449928	Alternating exposures requested	N	N
[deg] Pointing Roll	0.0	2.240090459640318	[s] Primary exposure time	3.2	3.2
[mm] SIM focus pos	-1.429586	-1.428180813131781			
[mm] SIM defocus	0.1037507710433287	0.1051558262725154			
[mm] SIM translation stage pos	250.455976	250.466033080201			
[mm] SIM translation stage offset	0	-0.01005468664627074			
[s] Observation start time (MET)	507666284.044908	507666283.01991			
Observation start date	2014-02-01T18:24:44	2014-02-01T18:24:43			
[s] Observation end time (MET)	507673973.595332	507673972.57033			
Observation end date	2014-02-01T20:32:54	2014-02-01T20:32:52			
Read mode	TIMED	TIMED			

2.3 Star Slots

2.4 FID Slots

A Summary

A.1 Status

V&V Scientist	Joy Nichols
V&V Date (YYYY-MM-DD)	2014.02.03
V&V Edition	1
V&V Disposition and Status	OK
V&V Charge Time	5.4212445911765

A.2 Comments