

# V&V Reference Report

## L2 ASCDS Version : 7.6.10

Observation 525 - L2 Version 001  
Chandra X-Ray Center

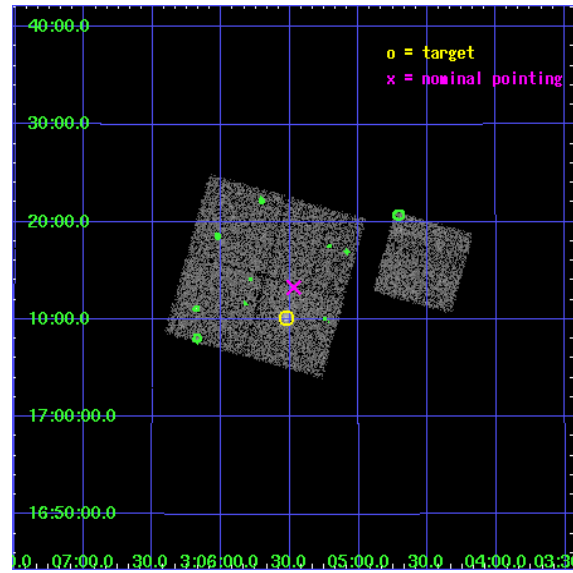
L2 Processing Date : Jun 9 2007

## Contents

<b>1</b>	<b>Front</b>	<b>2</b>
<b>2</b>	<b>OBI</b>	<b>3</b>
2.1	OBI . . . . .	3
2.1.1	Images . . . . .	3
2.1.2	Bias . . . . .	3
2.1.3	Parameters . . . . .	4
2.1.4	Events . . . . .	4
2.2	Compared Parameters . . . . .	5
2.3	Aspect . . . . .	6
2.4	Star Slots . . . . .	9
2.4.1	Slot 3 . . . . .	9
2.4.2	Slot 4 . . . . .	10
2.4.3	Slot 5 . . . . .	11
2.4.4	Slot 6 . . . . .	12
2.4.5	Slot 7 . . . . .	13
2.5	FID Slots . . . . .	14
2.5.1	Slot 0 . . . . .	14
2.5.2	Slot 1 . . . . .	15
2.5.3	Slot 2 . . . . .	16
<b>3</b>	<b>Point Sources</b>	<b>17</b>
<b>A</b>	<b>Summary</b>	<b>18</b>
A.1	Status . . . . .	18
A.2	Comments . . . . .	18

# 1 Front

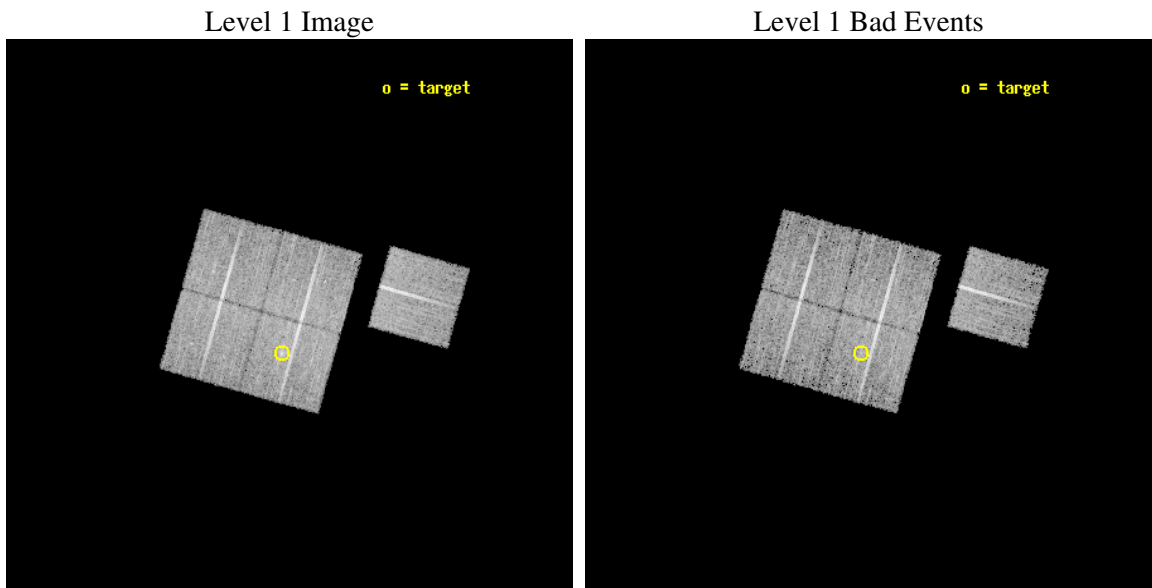
seq_num	800033
obs_id	525
title	DETERMINATION OF H0/Q0
observer	DR. LEON VANSPEYBROECK
object	MS 0302.7+1658
dtcycle	0
cycle	P
ra_targ	46.38125
dec_targ	17.168542
ra_nom	46.367849231384
dec_nom	17.221497339558
roll_nom	105.8021715235
revision	2
ontime	10166.400009468
livetime	10037.666931077
ontime0	10159.918009117
ontime1	10166.400009468
ontime2	10166.400009468
ontime3	10166.400009468
ontime6	10166.400009468
l2events	30452



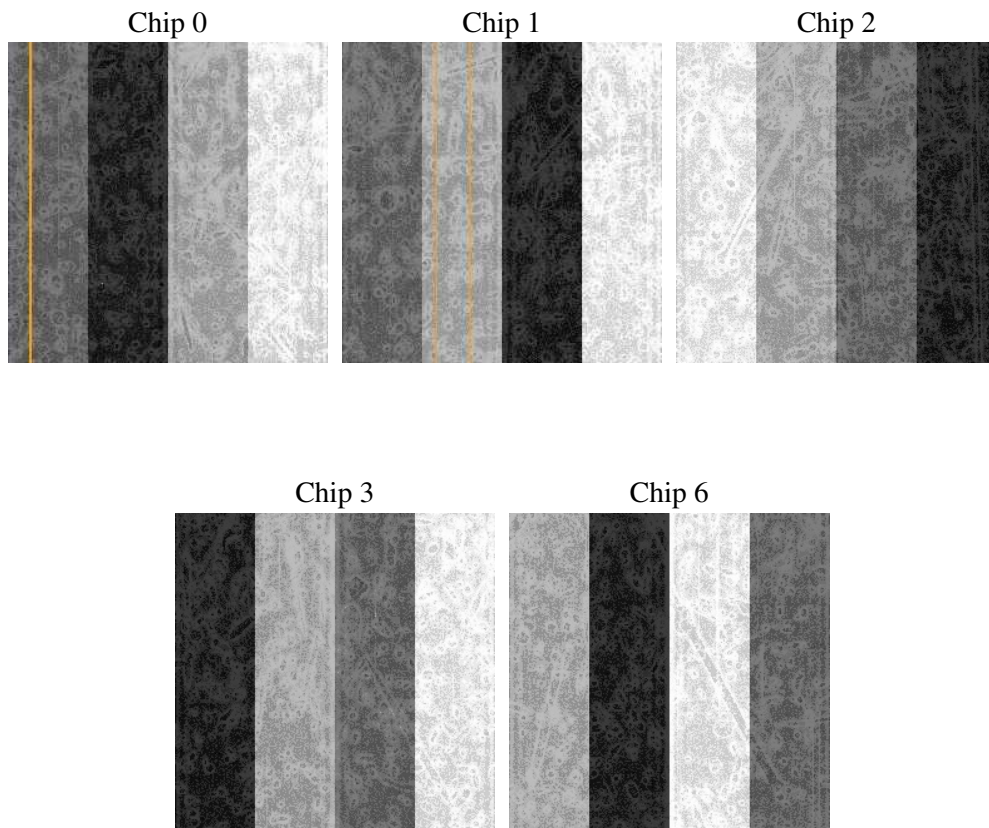
## 2 OBI

### 2.1 OBI

#### 2.1.1 Images



#### 2.1.2 Bias



### 2.1.3 Parameters

obi_num	0
ascdsver	7.6.10
caldbver	3.4.0
date	2007-06-09T16:16:29
revision	2

sched_exp_time	10000.000000
ontime	10166.400009468
ontime0	10159.918009117
ontime1	10166.400009468
ontime2	10166.400009468
ontime3	10166.400009468
ontime6	10166.400009468
l1events	299090

### 2.1.4 Events

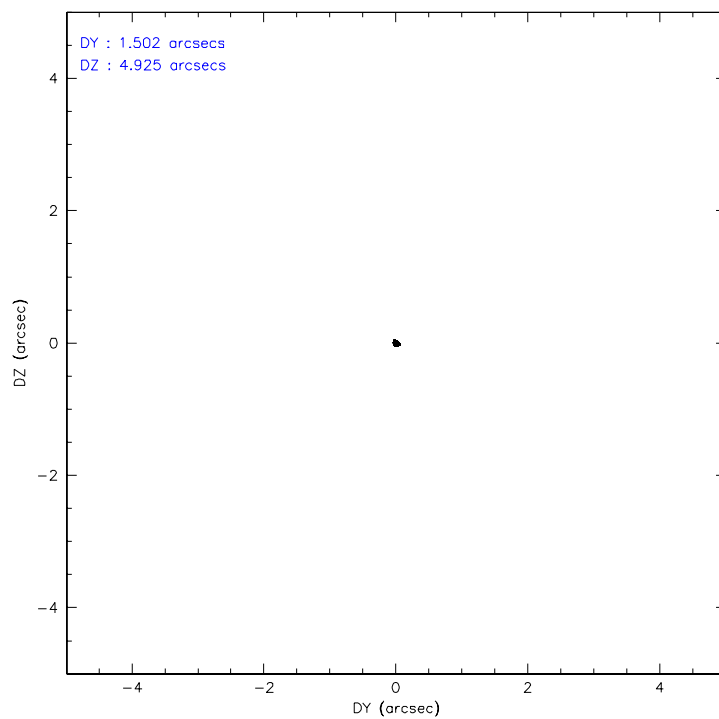
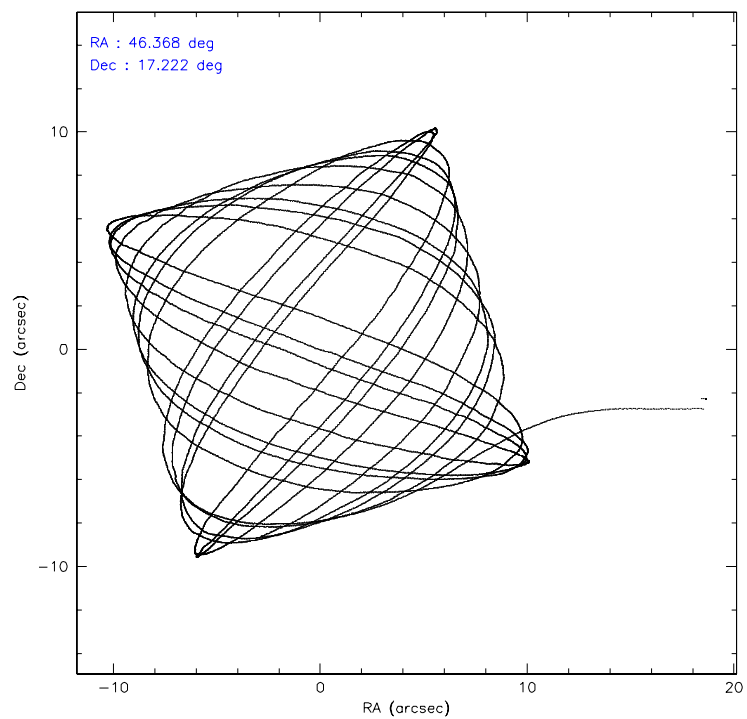
	ccd 0	ccd 1	ccd 2	ccd 3	ccd 6
level 1 events	56059	57129	62270	62505	61127
rejected events	48963	49611	55559	55026	54343
rejected %	87%	86%	89%	88%	88%

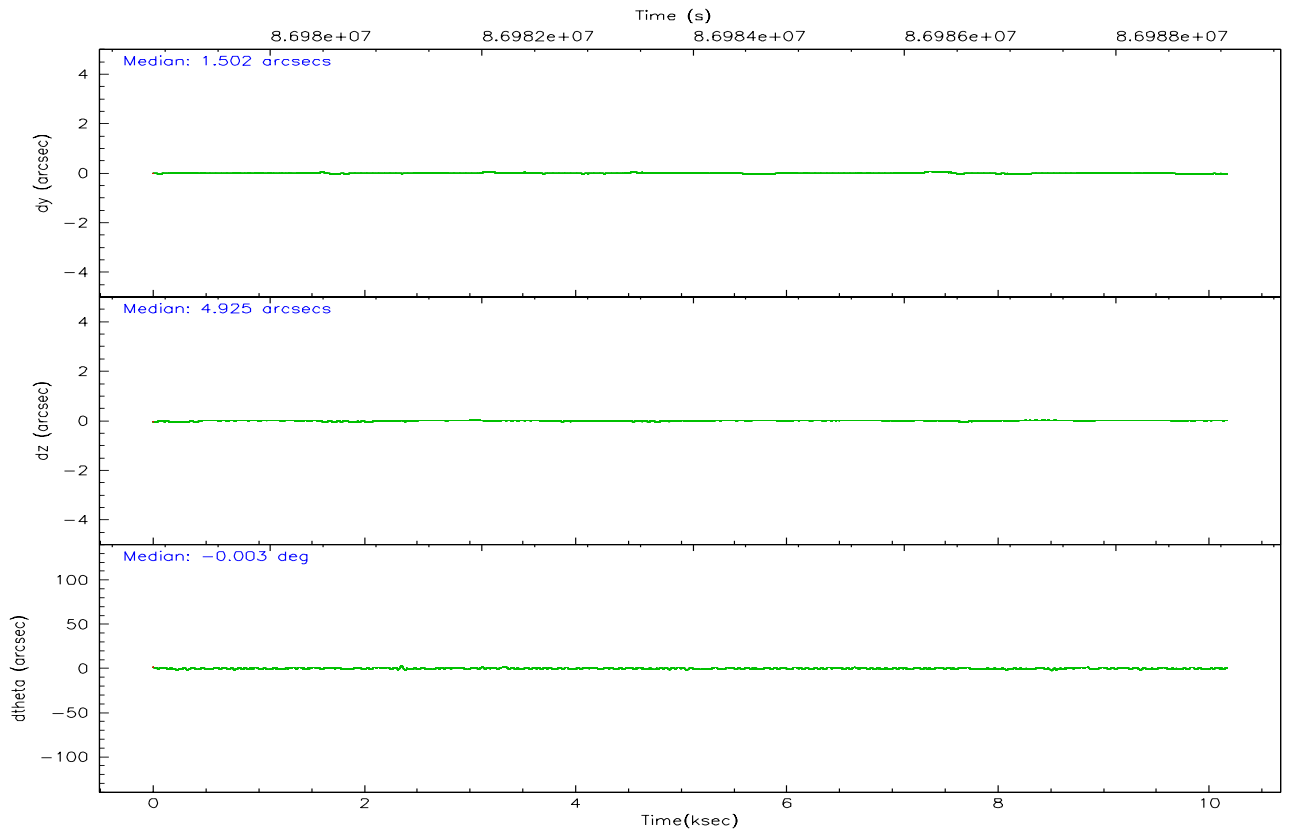
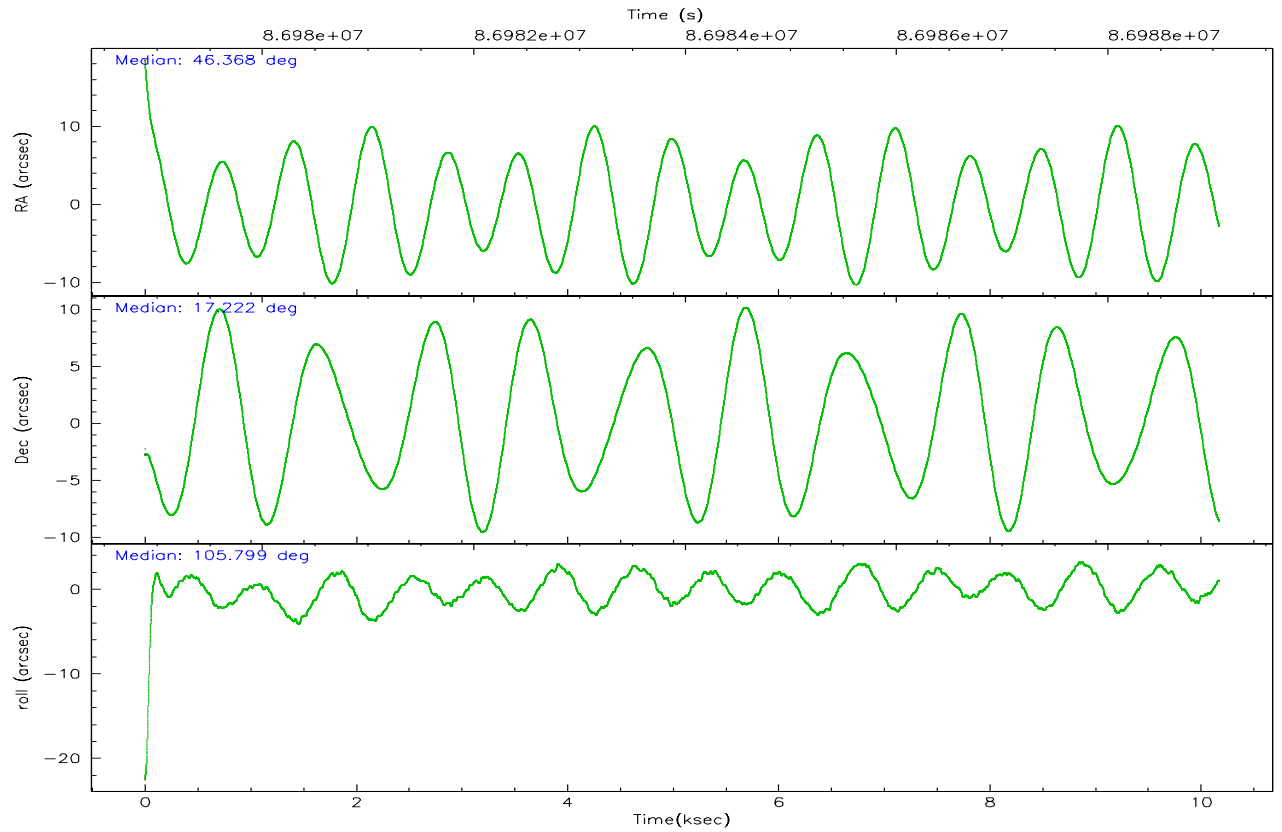
	ccd 0	ccd 1	ccd 2	ccd 3	ccd 6
grade 0 events	3147	3184	2896	3617	2752
	5%	5%	4%	5%	4%
grade 1 events	32	28	22	17	32
	0%	0%	0%	0%	0%
grade 2 events	1479	1517	1394	1424	1351
	2%	2%	2%	2%	2%
grade 3 events	656	773	640	682	676
	1%	1%	1%	1%	1%
grade 4 events	647	724	618	625	680
	1%	1%	0%	0%	1%
grade 5 events	2066	2280	2058	2294	2352
	3%	3%	3%	3%	3%
grade 6 events	1201	1339	1184	1164	1337
	2%	2%	1%	1%	2%
grade 7 events	46831	47284	53458	52682	51947
	83%	82%	85%	84%	84%

## 2.2 Compared Parameters

Parameter	Planned	Actual	Parameter	Planned	Actual
Instrument	ACIS	ACIS	Obspar format version number	6	6
Detector	ACIS-01236	ACIS-01236	Obspar file type	PREDICTED	ACTUAL
Grating	NONE	NONE	Obspar update status	NONE	UPDATED
Data mode	VFAINT	VFAINT	Number of optional ACIS chips dropped	0	0
Observation mode	POINTING	POINTING	On-chip summing requested	N	N
Pointing RA	46.388418	46.36784923138441	Subarray requested	NONE	NONE
Pointing Dec	17.202294	17.22149733955751	Alternating exposures requested	N	N
Pointing Roll	105.587423	105.8021715235024	Primary exposure time	3.200000	3.2
SIM focus pos (mm)	-0.782348	-0.7809083437167272			
SIM defocus (mm)	0	0.001439871863259334			
SIM translation stage pos (mm)	-225.840463	-225.848371962627			
SIM translation stage offset (mm)	-7.752	-7.744081040302689			
Observation start time	86979059.184000	86978049.24534			
Observation start date	2000-10-03T16:49:55	2000-10-03T16:34:09			
Observation end time	86989059.184000	86989967.43329			
Observation end date	2000-10-03T19:36:35	2000-10-03T19:52:47			
Read mode	TIMED	TIMED			

## 2.3 Aspect





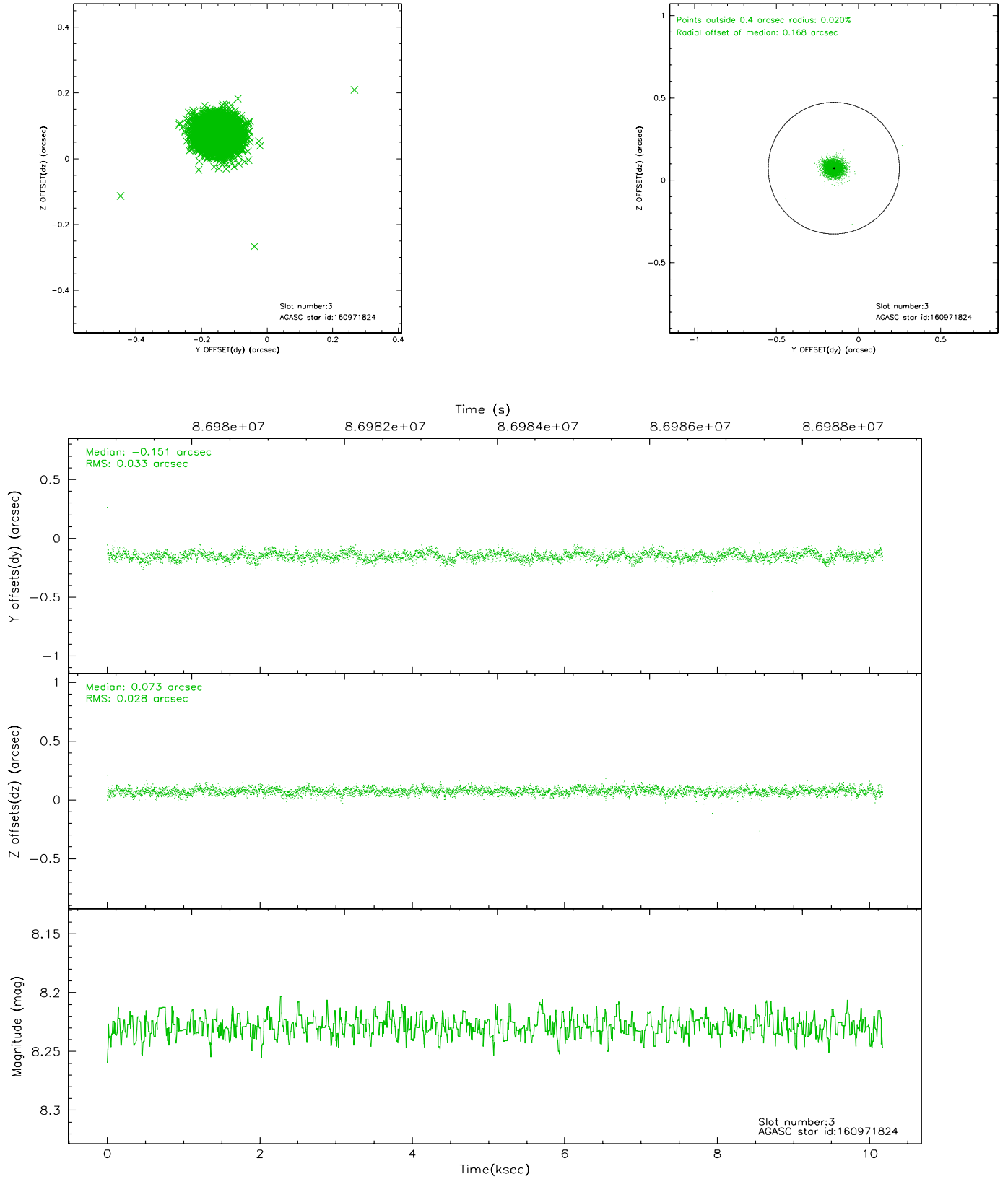
### Slot Statistics

slot	status	id	mag	n_pts	med_dy	med_dz	dr1	dr2	ra	dec	mean_y	mean_z
0	FID	ACIS-I-2	7.17	2482	-0.041	-0.028	0.009	0.016	0.000000	0.000000	-756.41	-992.61
1	FID	ACIS-I-4	7.15	2482	-0.070	0.039	0.006	0.010	0.000000	0.000000	2157.31	913.31
2	FID	ACIS-I-5	7.22	2482	0.010	0.058	0.009	0.015	0.000000	0.000000	-1809.15	910.71
3	GUIDE	160971824	8.23	4963	-0.151	0.073	0.045	0.073	46.311119	17.635421	1572.99	-163.07
4	GUIDE	160564320	8.52	4964	0.045	0.107	0.073	0.113	47.024010	16.925465	-1544.38	-1841.38
5	GUIDE	160968984	9.12	4962	-0.104	-0.129	0.075	0.125	45.723184	17.565560	1876.44	1846.73
6	GUIDE	160569472	9.66	4962	0.132	-0.094	0.082	0.132	46.348961	16.986934	-709.86	339.76
7	GUIDE	160572288	9.59	4960	0.077	0.045	0.081	0.135	46.576803	17.115983	-473.28	-540.48

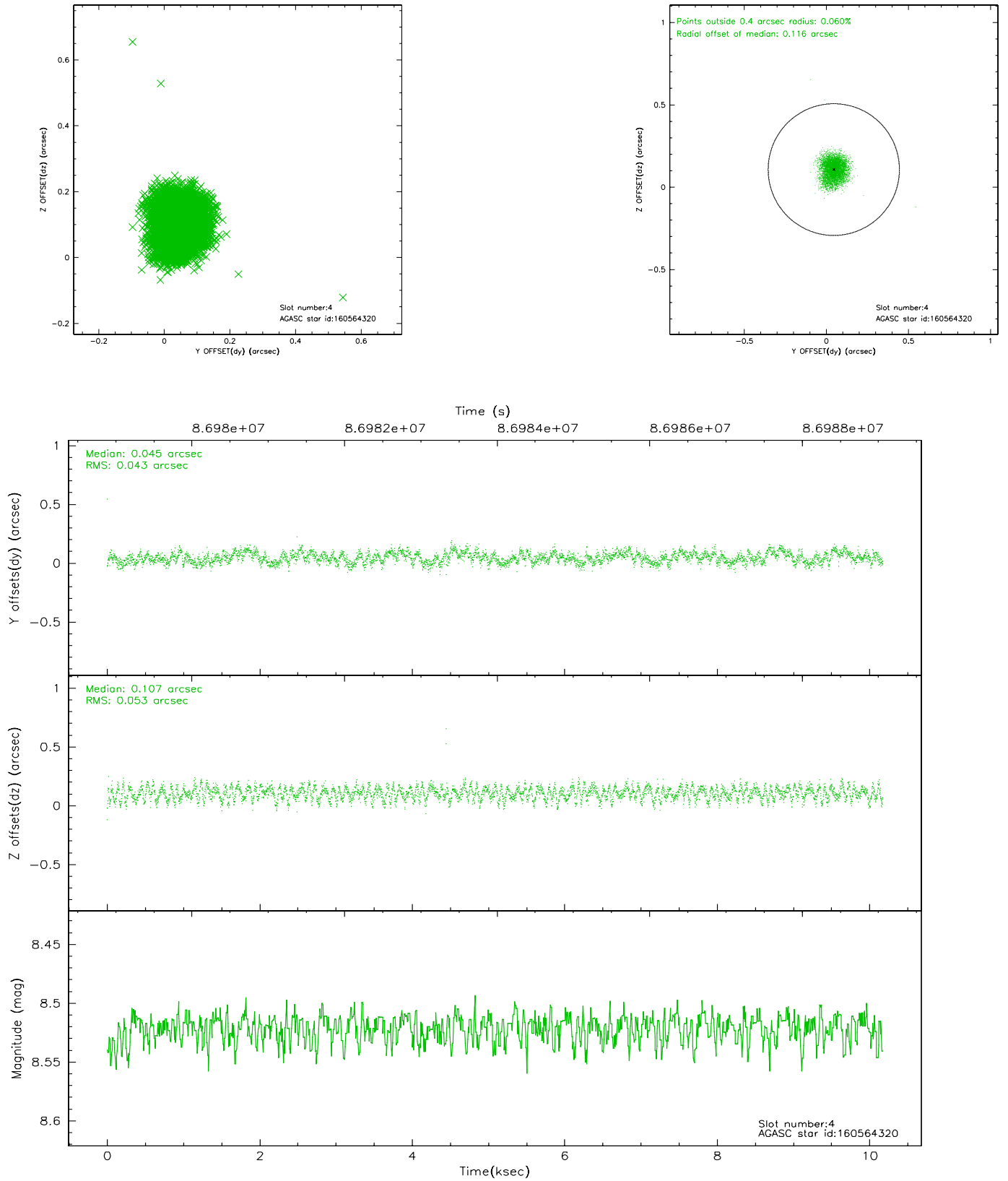


## 2.4 Star Slots

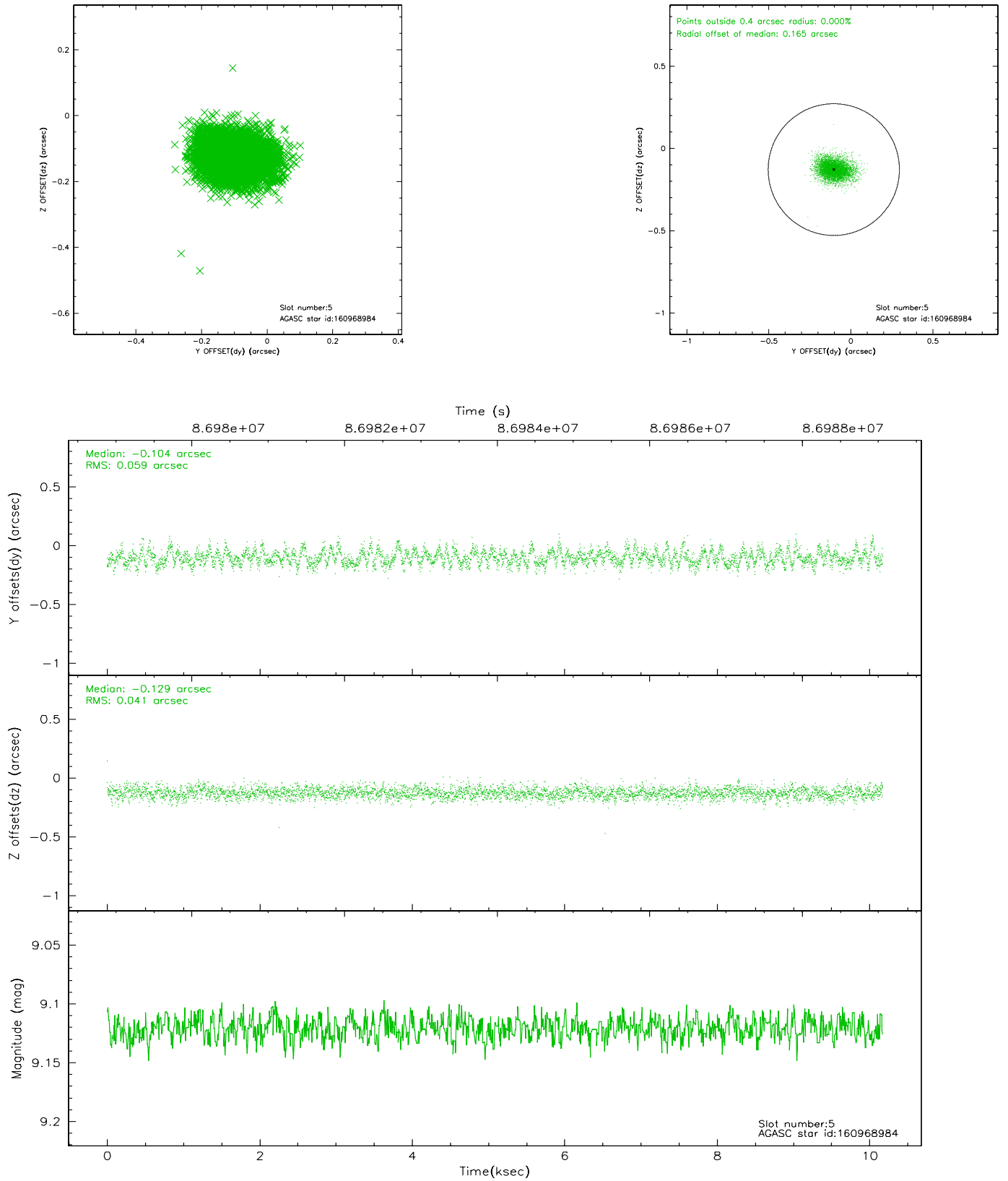
### 2.4.1 Slot 3



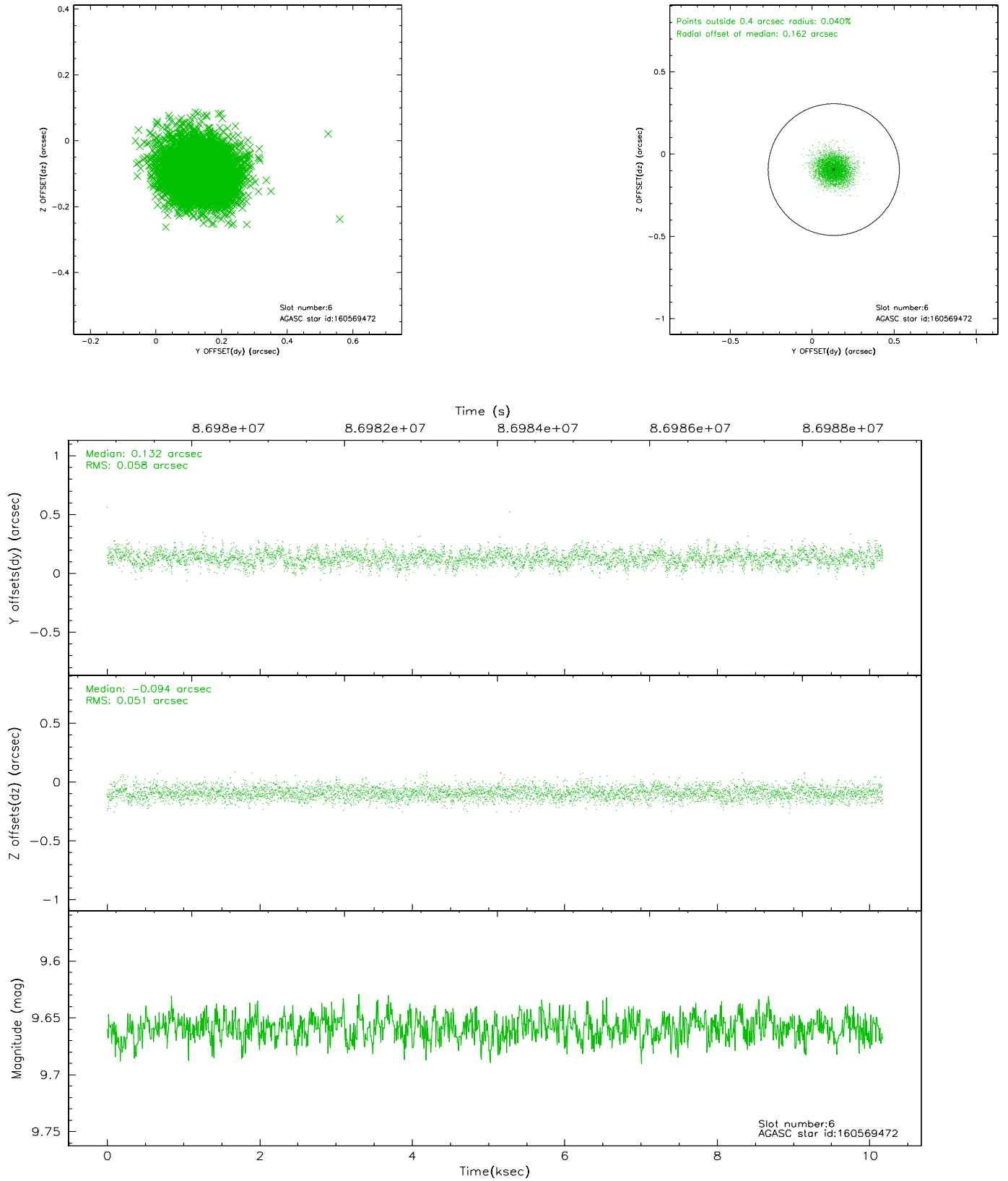
## 2.4.2 Slot 4



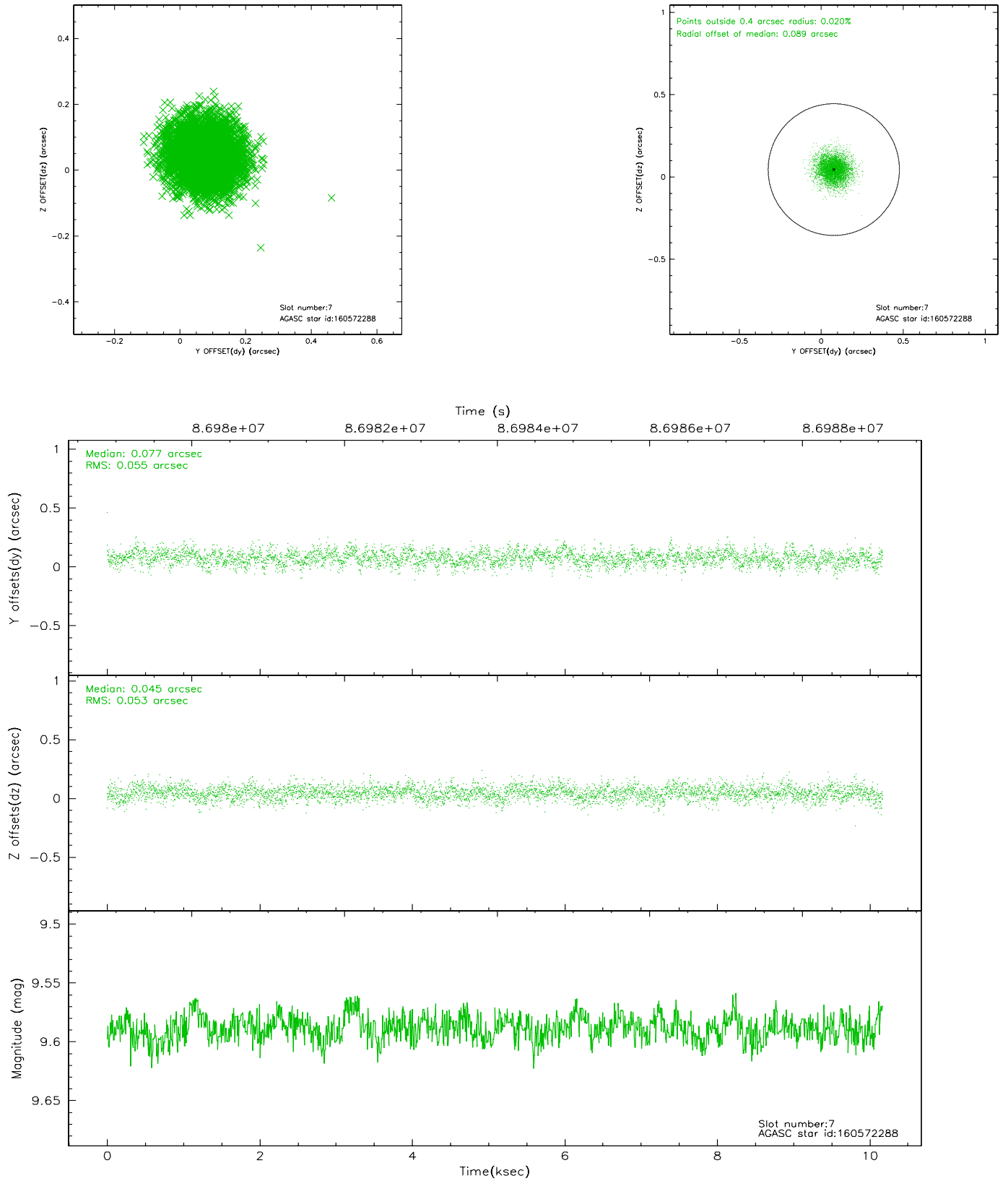
### 2.4.3 Slot 5



## 2.4.4 Slot 6

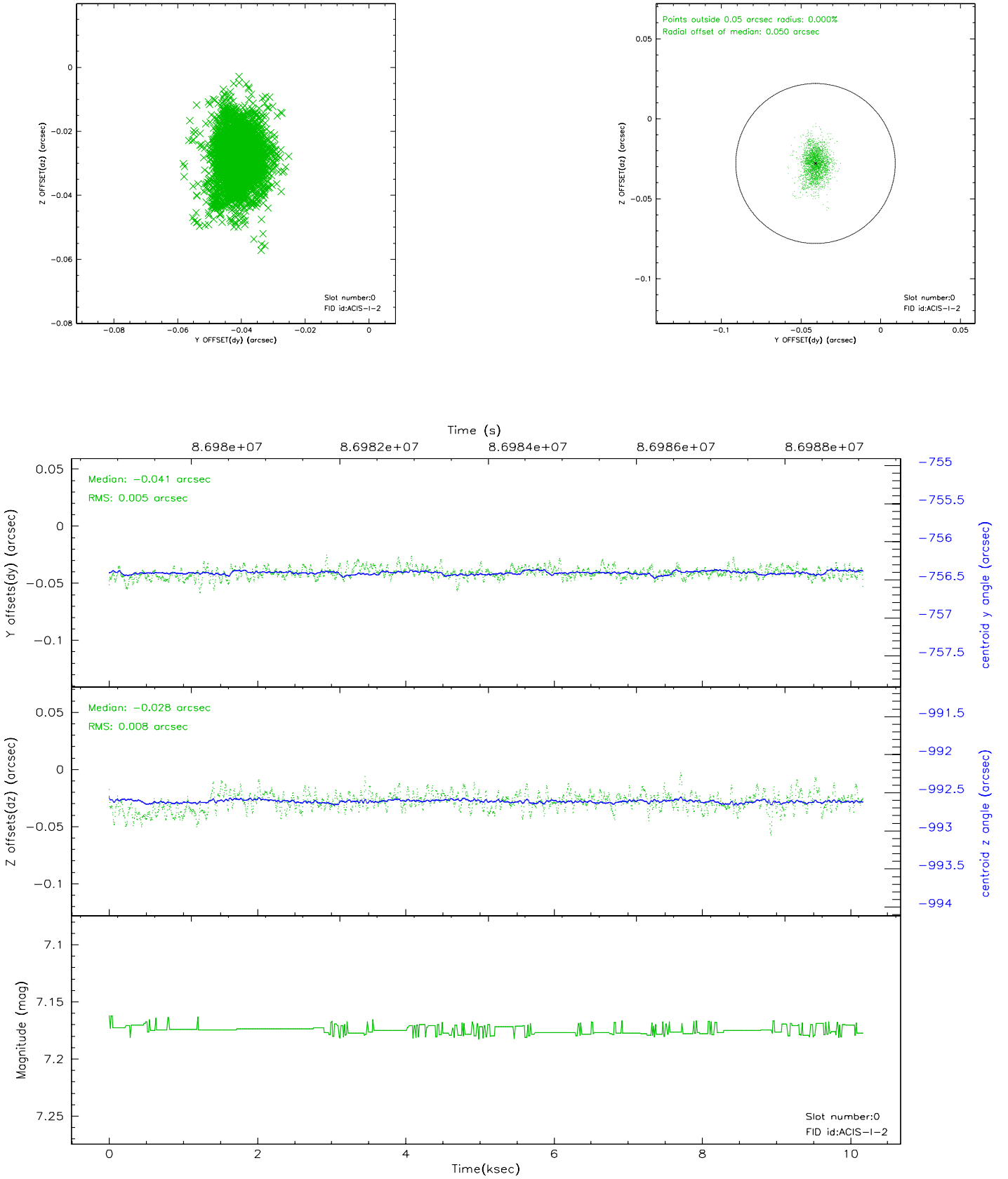


## 2.4.5 Slot 7

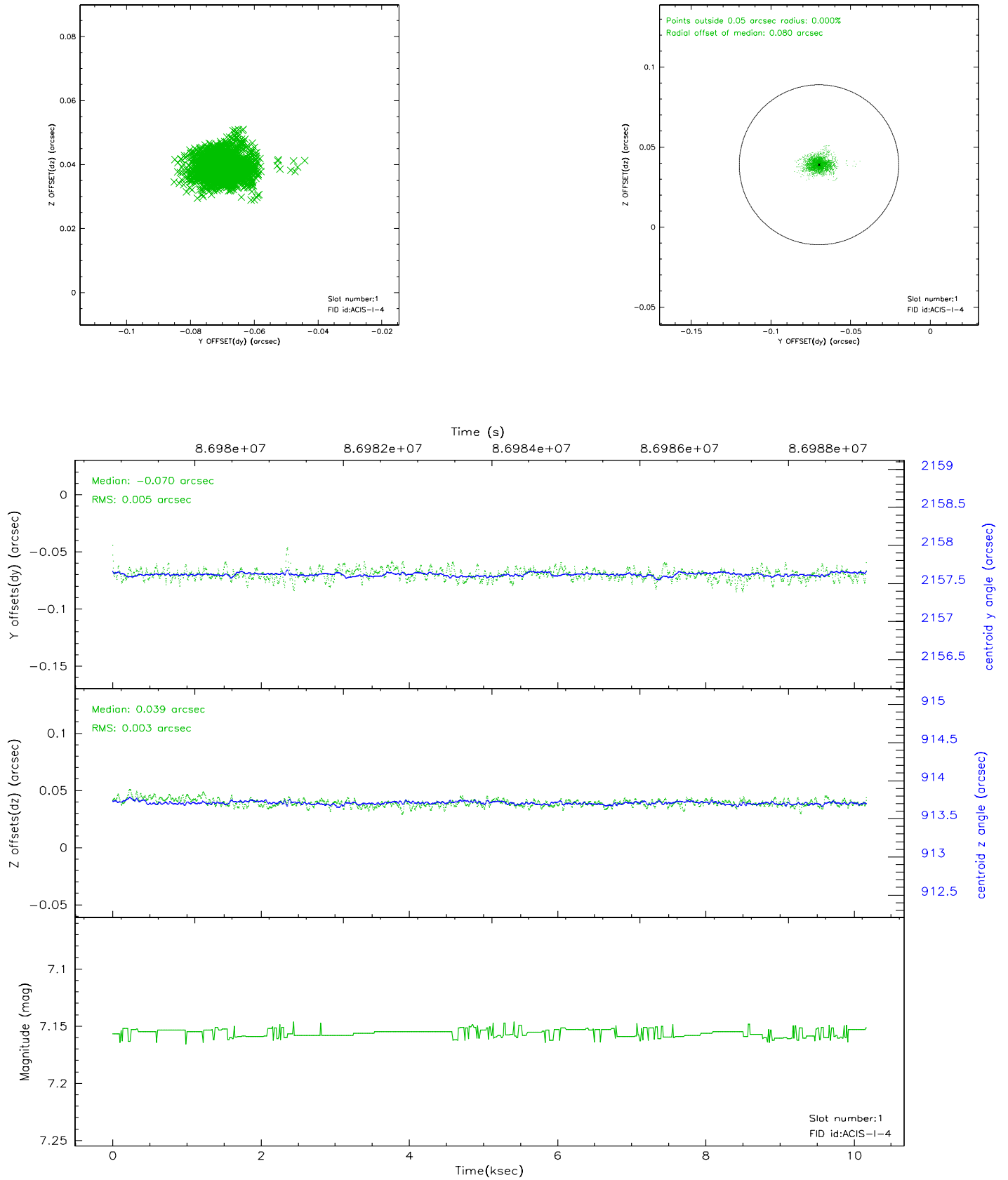


## 2.5 FID Slots

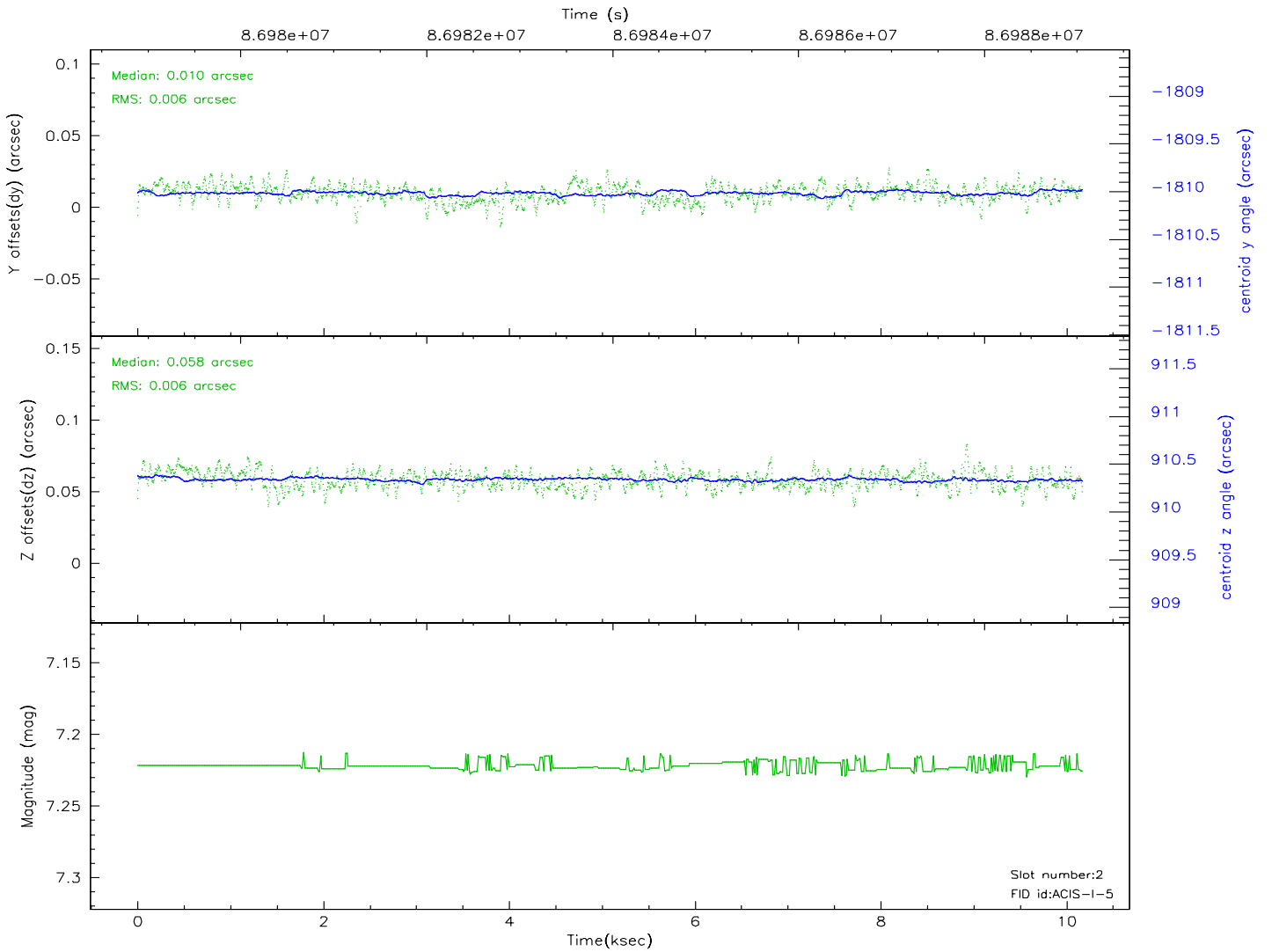
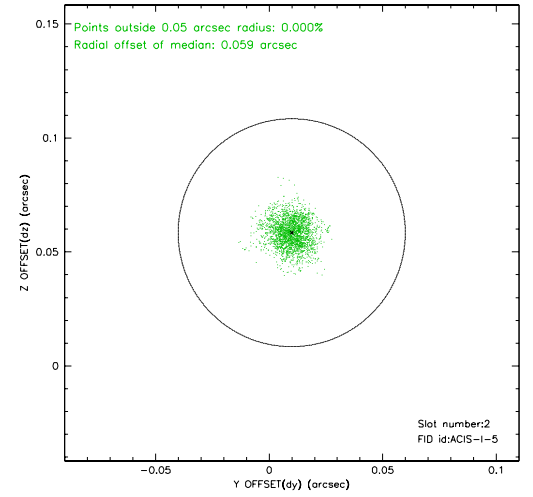
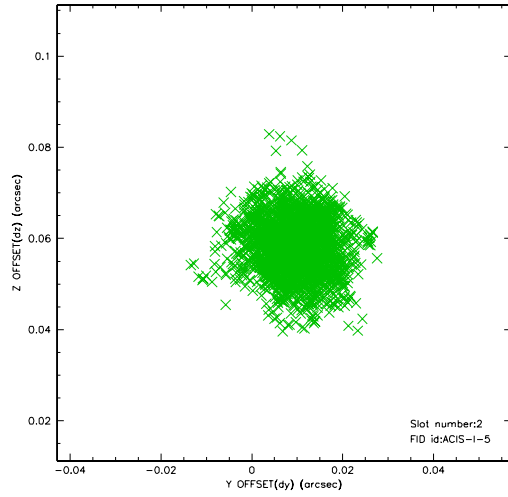
### 2.5.1 Slot 0



## 2.5.2 Slot 1

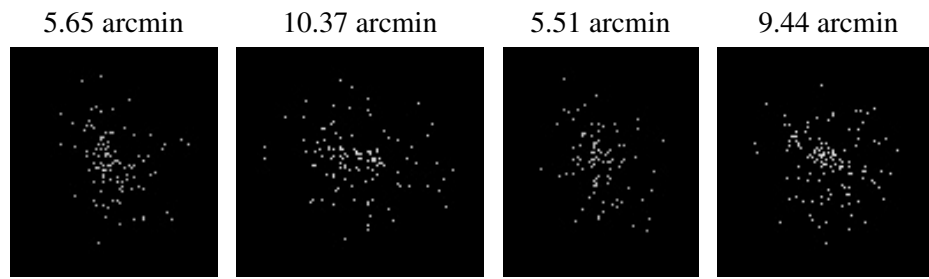


### 2.5.3 Slot 2





### 3 Point Sources



## A Summary

### A.1 Status

V&V Scientist	Beth Sundheim
V&V Date (YYYY-MM-DD)	2007.06.10
V&V Edition	1
V&V Disposition and Status	OK
V&V Charge Time	10.166

### A.2 Comments