

V&V Reference Report

L2 ASCDS Version : 8.4.5

Observation 5145 - L2 Version 3
Chandra X-Ray Center

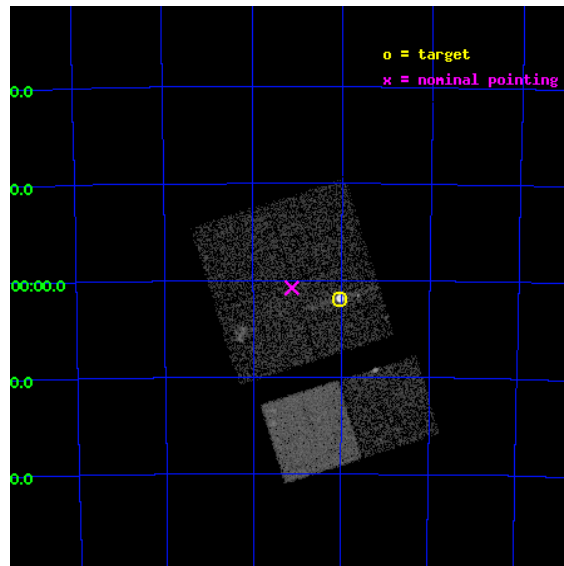
L2 Processing Date : Nov 30 2012

Contents

1	Front	2
2	OBI	3
2.1	OBI	3
2.1.1	Images	3
2.1.2	Bias	3
2.1.3	Parameters	4
2.1.4	Events	4
2.2	Compared Parameters	5
2.3	Aspect	6
2.4	Star Slots	9
2.4.1	Slot 3	9
2.4.2	Slot 4	10
2.4.3	Slot 5	11
2.4.4	Slot 6	12
2.4.5	Slot 7	13
2.5	FID Slots	14
2.5.1	Slot 0	14
2.5.2	Slot 1	15
2.5.3	Slot 2	16
A	Summary	17
A.1	Status	17
A.2	Comments	17

1 Front

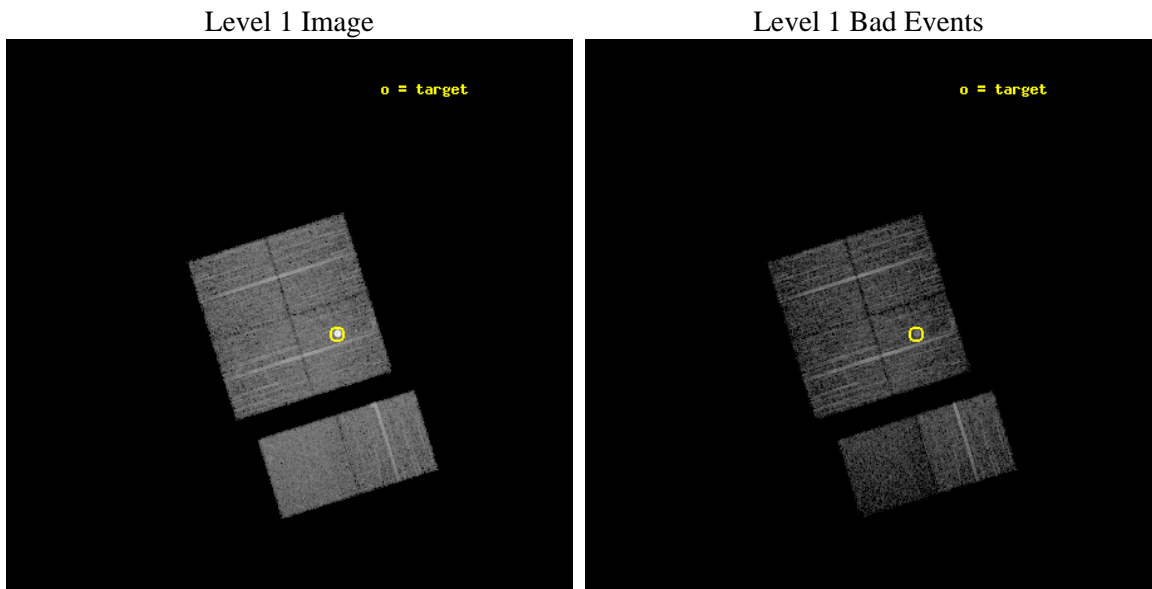
seq_num	590343	Sequence number
obs_id	5145	Observation id
title	AO5B ACIS-I Calibration Observations of E0102-72	Proposal title
observer	Dr. CXC Calibration	Principal investigator
object	E0102-72[I2,-120,4.7,2.5,0]	Source name
dtcycle	0	
cycle	P	events from which exps? Prim/Second/Both
ra_targ	16.01	Observer's specified target RA [deg]
dec_targ	-72.032028	Observer's specified target Dec [deg]
ra_nom	16.281240158954	Nominal RA [deg]
dec_nom	-72.013194803731	Nominal Dec [deg]
roll_nom	162.61860734256	Nominal Roll [deg]
revision	3	Processing version of data
ontime	7238.3999730349	Sum of GTIs [s]
livetime	7146.7429941351	Livetime [s]
ontime0	7231.9180225432	Sum of GTIs [s]
ontime1	7238.3999730349	Sum of GTIs [s]
ontime2	7238.3999730349	Sum of GTIs [s]
ontime3	7238.3999730349	Sum of GTIs [s]
ontime6	7238.3999730349	Sum of GTIs [s]
ontime7	7238.3999730349	Sum of GTIs [s]
l2events	57819	Number of level 2 events



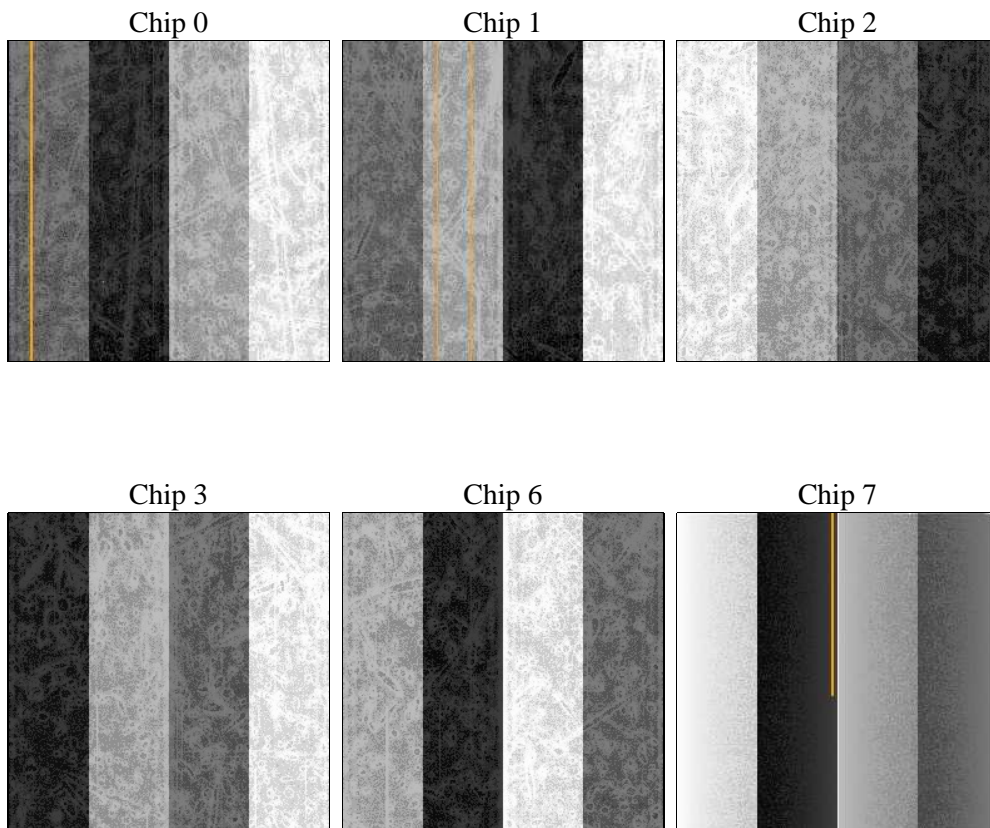
2 OBI

2.1 OBI

2.1.1 Images



2.1.2 Bias



2.1.3 Parameters

obi_num	0	Obi number	sched_exp_time	7481.000000	[s] Scheduled observation exposure time
ascdsver	8.4.5	Processing system revision	ontime	7238.3999730349	Sum of GTIs [s]
caldsver	4.5.2	 	ontime0	7231.9180225432	Sum of GTIs [s]
date	2012-11-30T15:44:36	Date and time of file creation	ontime1	7238.3999730349	Sum of GTIs [s]
revision	3	Processing version of data	ontime2	7238.3999730349	Sum of GTIs [s]
			ontime3	7238.3999730349	Sum of GTIs [s]
			ontime6	7238.3999730349	Sum of GTIs [s]
			ontime7	7238.3999730349	Sum of GTIs [s]
			l1events	256258	Number of level 1 events

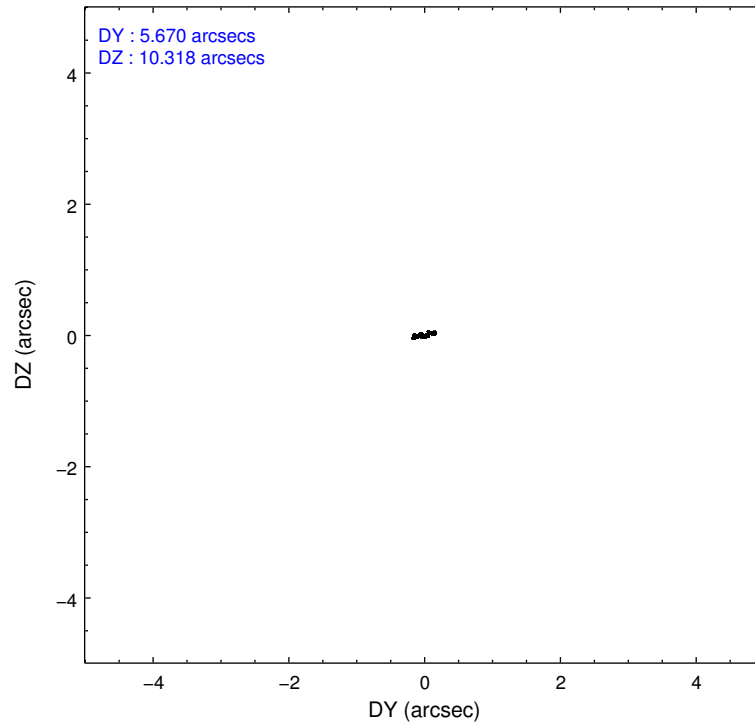
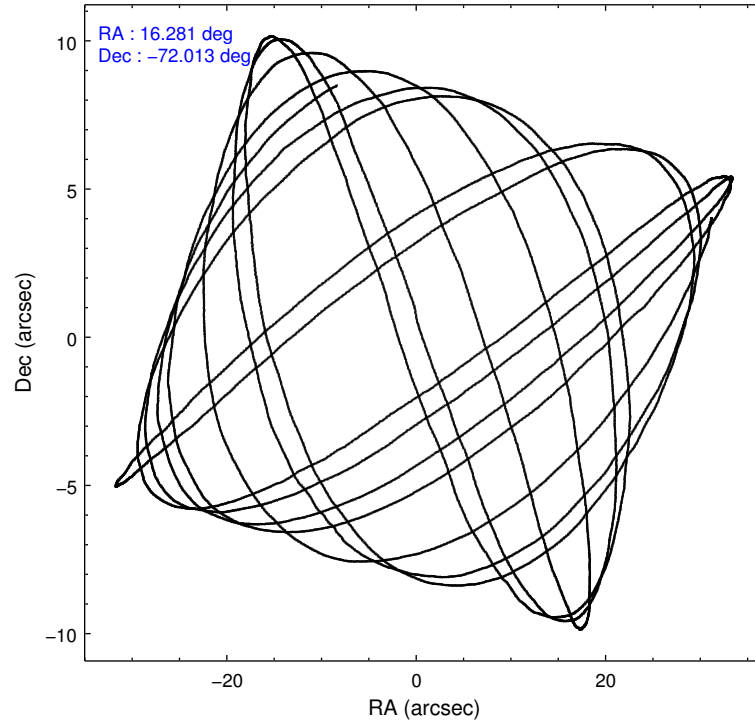
2.1.4 Events

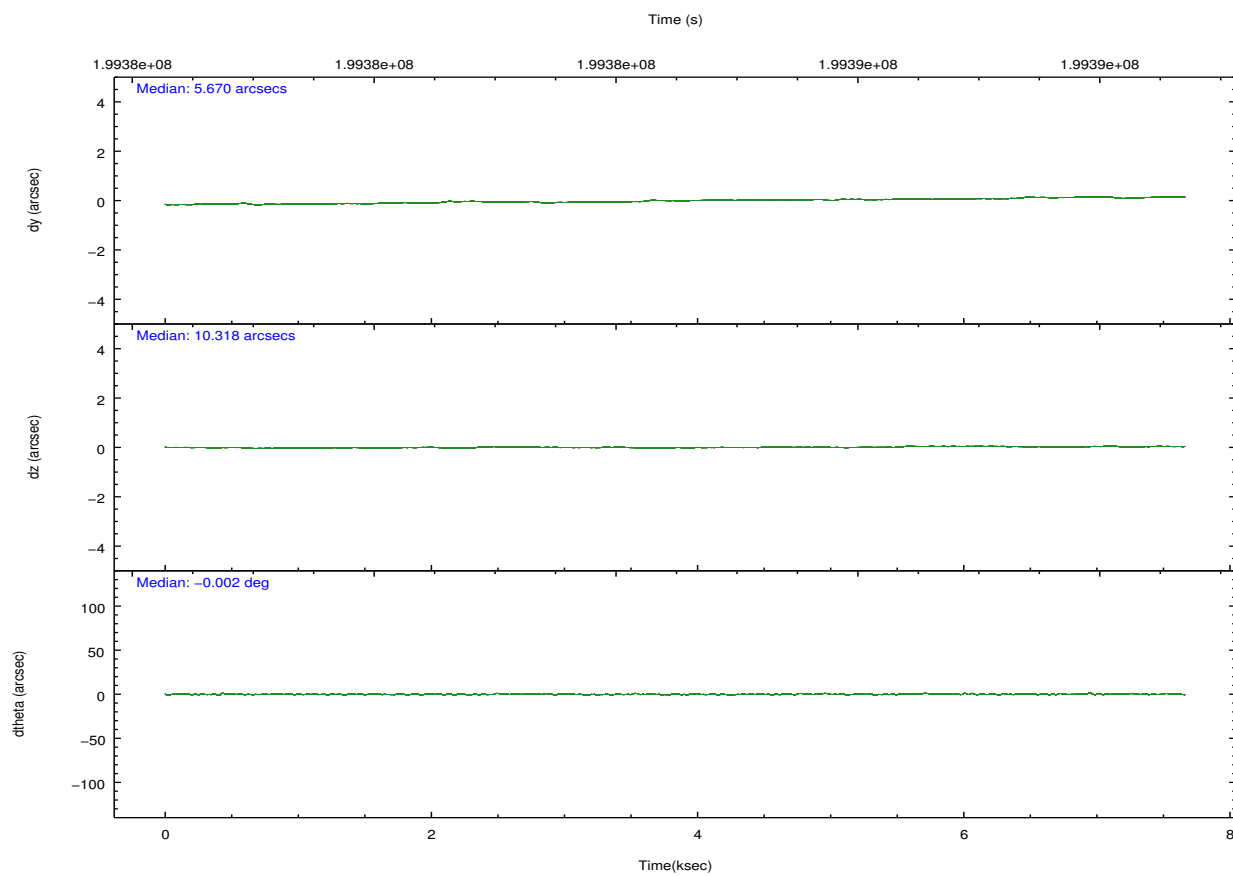
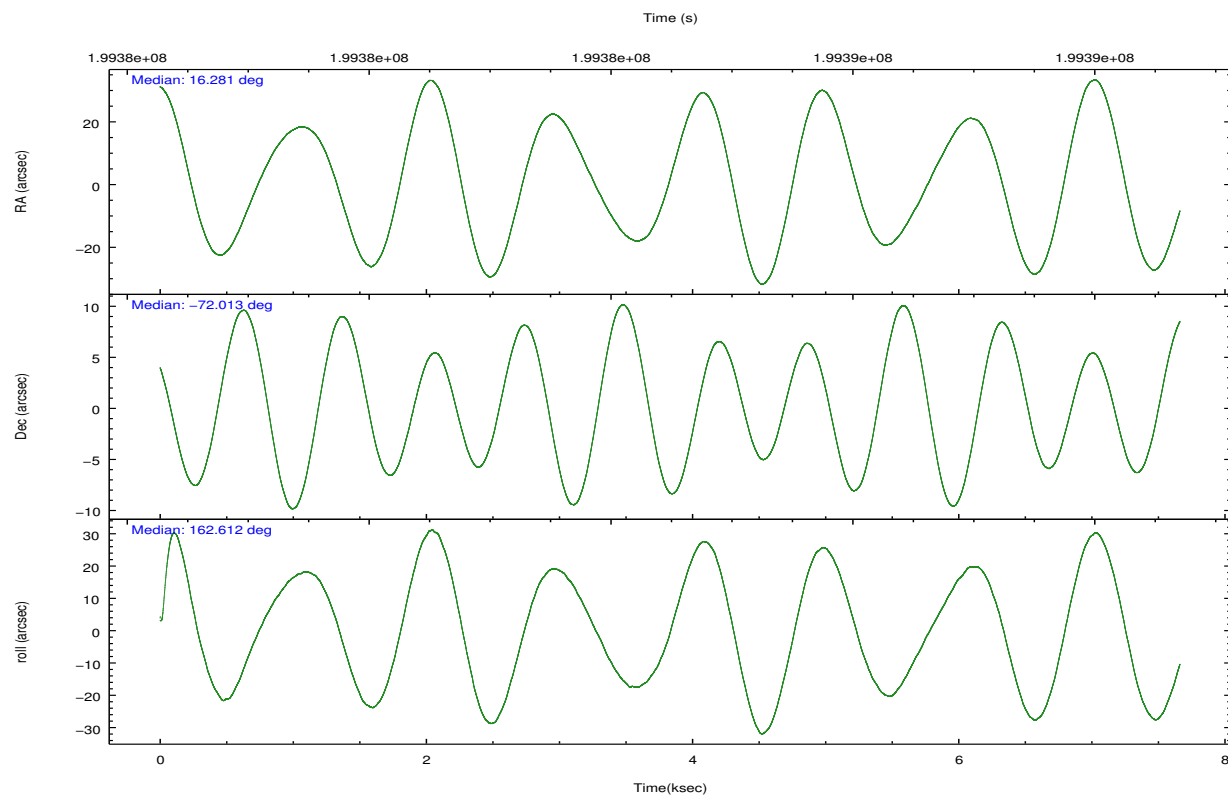
	ccd 0	ccd 1	ccd 2	ccd 3	ccd 6	ccd 7		ccd 0	ccd 1	ccd 2	ccd 3	ccd 6	ccd 7
level 1 events	37391	36005	64373	40597	40352	37540	grade 0 events	1420	1380	21970	1834	1889	1890
rejected events	33543	32079	37438	36353	35792	19106		3%	3%	34%	4%	4%	5%
rejected %	89%	89%	58%	89%	88%	50%	grade 1 events	22	20	210	26	26	45
								0%	0%	0%	0%	0%	0%
							grade 2 events	886	817	2583	810	926	3900
								2%	2%	4%	1%	2%	10%
							grade 3 events	463	490	781	458	443	1865
								1%	1%	1%	1%	1%	4%
							grade 4 events	420	468	812	453	470	1813
								1%	1%	1%	1%	1%	4%
							grade 5 events	1140	1220	1208	1376	1416	4095
								3%	3%	1%	3%	3%	10%
							grade 6 events	662	772	798	692	833	8969
								1%	2%	1%	1%	2%	23%
							grade 7 events	32378	30838	36011	34948	34349	14963
								86%	85%	55%	86%	85%	39%

2.2 Compared Parameters

Parameter	Planned	Actual	Parameter	Planned	Actual
Instrument	ACIS	ACIS	Obspar format version number	7	7
Detector	ACIS-012367	ACIS-012367	Obspar file type	PREDICTED	ACTUAL
Grating	NONE	NONE	Obspar update status	NONE	UPDATED
Data mode	VFAINT	VFAINT	Number of optional ACIS chips dropped	0	0
Observation mode	POINTING	POINTING	On-chip summing requested	N	N
[deg] Pointing RA	16.367854	16.28124015895446	Subarray requested	NONE	NONE
[deg] Pointing Dec	-72.007058	-72.01319480373095	Alternating exposures requested	N	N
[deg] Pointing Roll	162.492304	162.6186073425632	[s] Primary exposure time	0.000000	3.2
[s] Window start time (MET)	197164864.184000	197164864.184000			
[s] Window stop time (MET)	199670464.184000	199670464.184000			
[mm] SIM focus pos	-0.782348	-0.7809083437167272			
[mm] SIM defocus	0	0.001439871863259334			
[mm] SIM translation stage pos	-233.592463	-233.5874344608287			
[mm] SIM translation stage offset	0	-0.005018542100998502			
[s] Observation start time (MET)	199380837.184000	199380460.46441			
Observation start date	2004-04-26T15:32:53	2004-04-26T15:27:40			
[s] Observation end time (MET)	199388318.184000	199389015.62729			
Observation end date	2004-04-26T17:37:34	2004-04-26T17:50:15			
Read mode	TIMED	TIMED			

2.3 Aspect



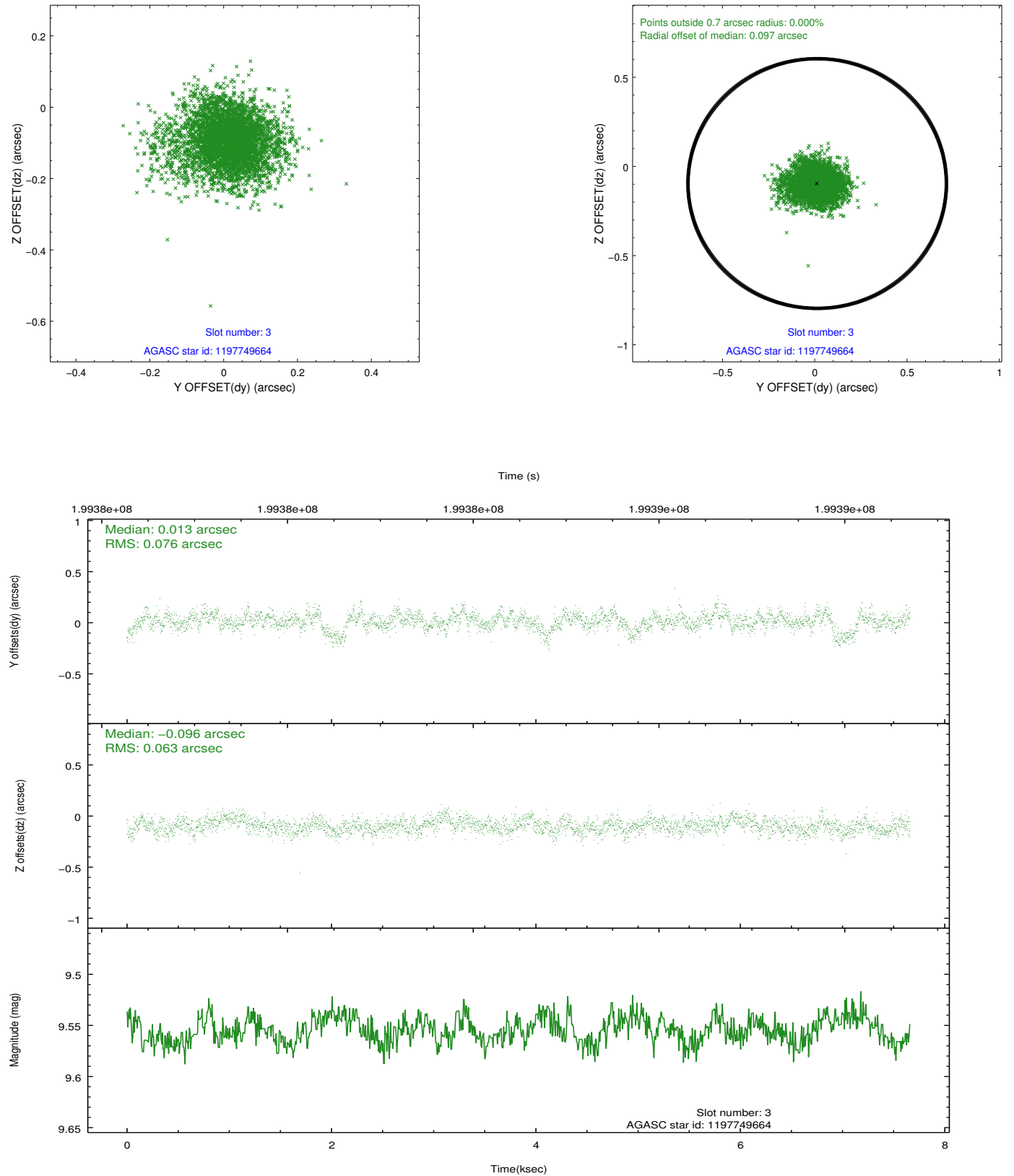


Slot Statistics

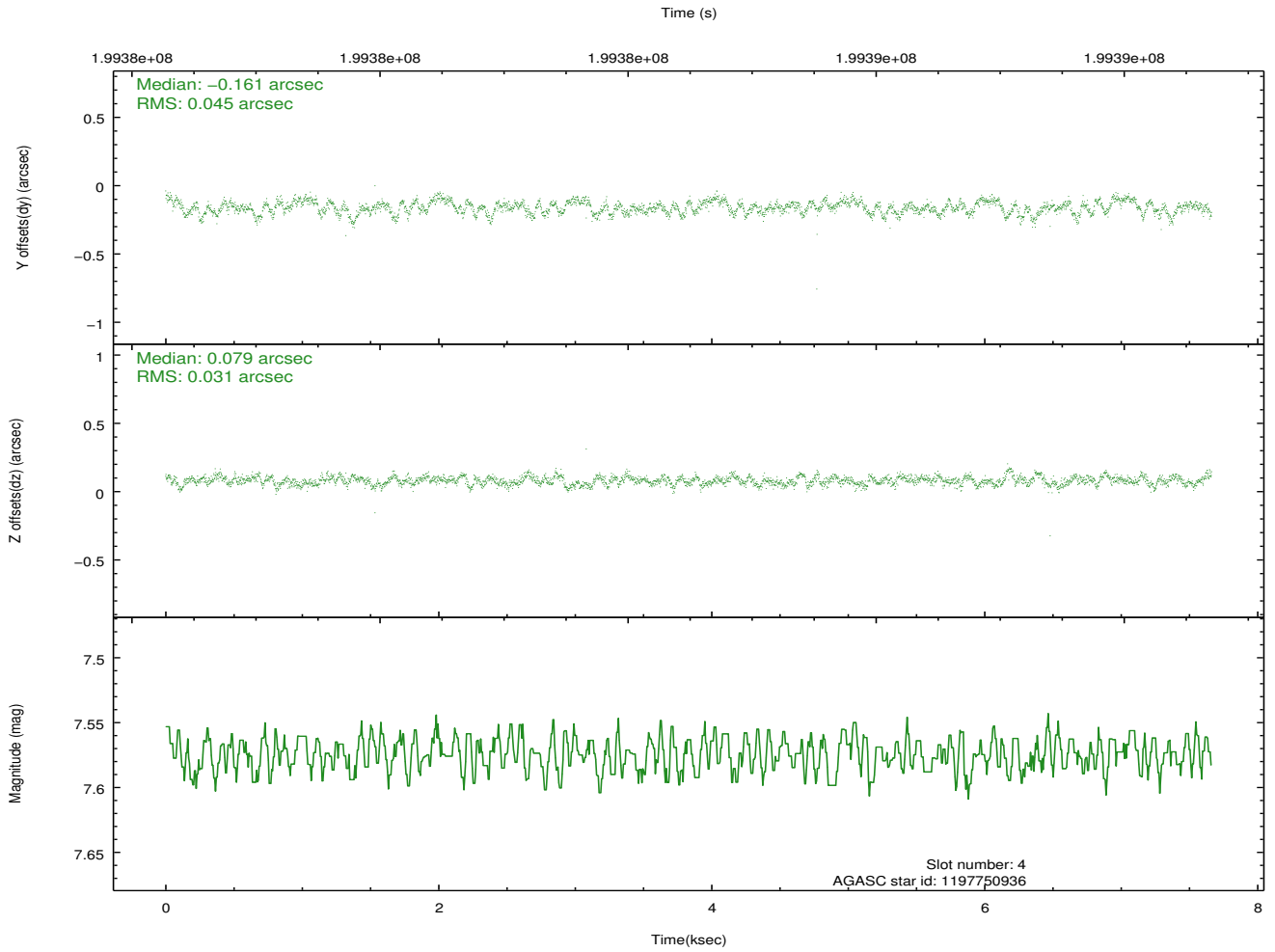
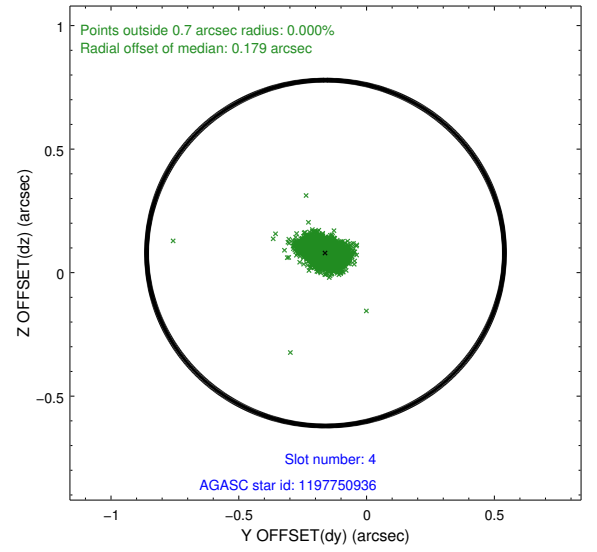
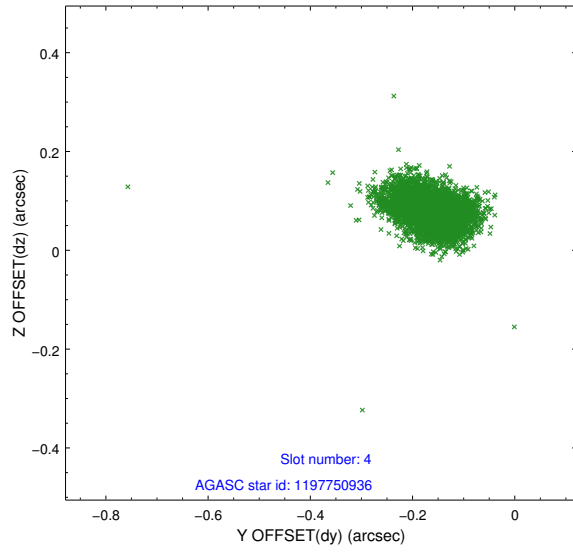
slot	status	id	mag	n_pts	med_dy	med_dz	dr1	dr2	ra	dec	mean_y	mean_z
0	FID	ACIS-I-1	7.24	1869	0.016	0.009	0.007	0.012	0.000000	0.000000	934.07	-833.80
1	FID	ACIS-I-5	7.23	1869	-0.159	0.037	0.006	0.010	0.000000	0.000000	-1813.79	1063.36
2	FID	ACIS-I-6	7.25	1869	0.051	0.024	0.008	0.012	0.000000	0.000000	398.86	1708.68
3	GUIDE	1197749664	9.55	3739	0.013	-0.096	0.102	0.175	15.809015	-72.366369	191.25	1419.54
4	GUIDE	1197750936	7.57	3739	-0.161	0.079	0.057	0.093	15.387940	-71.549550	1557.66	-1225.42
5	GUIDE	1197884536	8.50	3736	0.079	-0.009	0.078	0.123	17.160729	-71.835289	-663.48	-852.23
6	GUIDE	1197885104	9.36	3735	0.115	-0.036	0.075	0.121	17.845067	-72.189368	-1754.31	155.51
7	GUIDE	1197885328	7.23	3738	-0.047	0.064	0.066	0.105	16.283090	-71.733943	386.46	-908.99

2.4 Star Slots

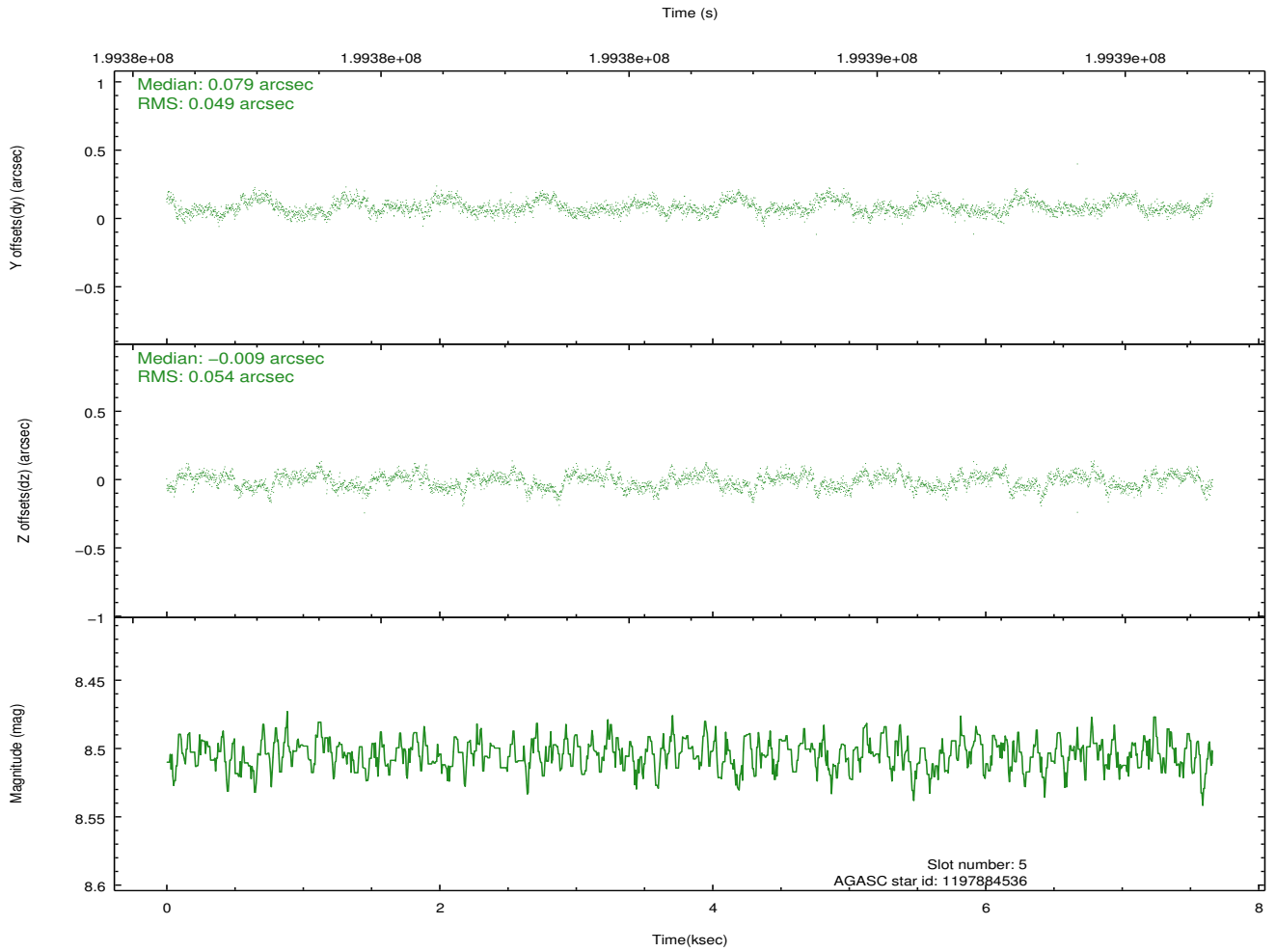
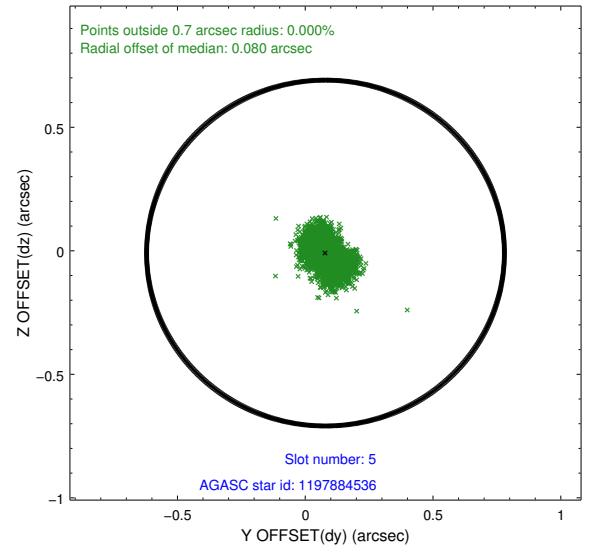
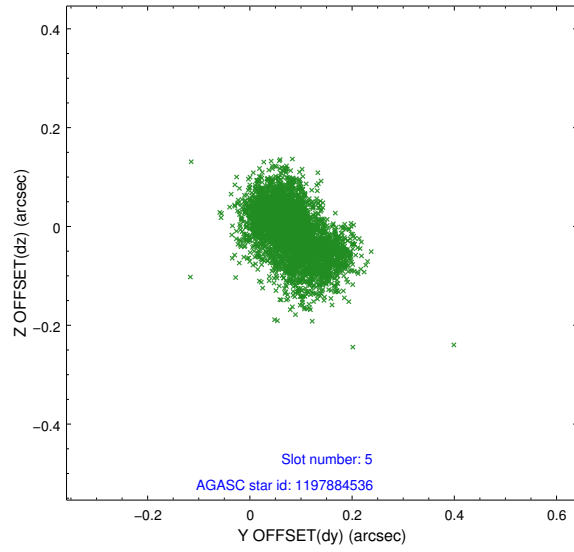
2.4.1 Slot 3



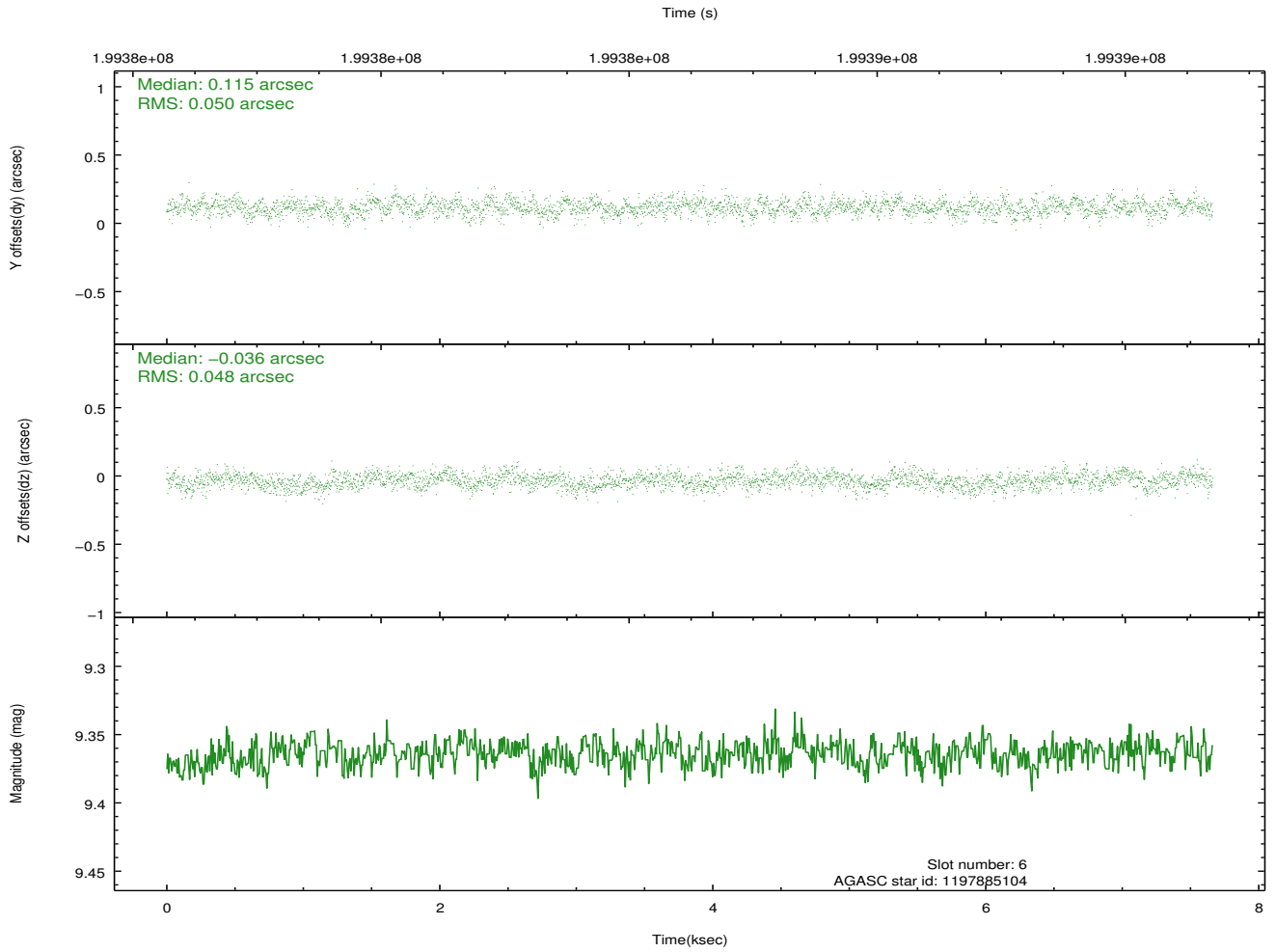
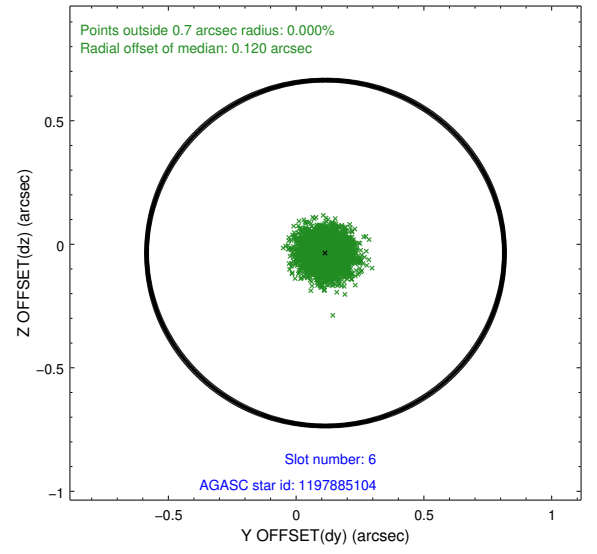
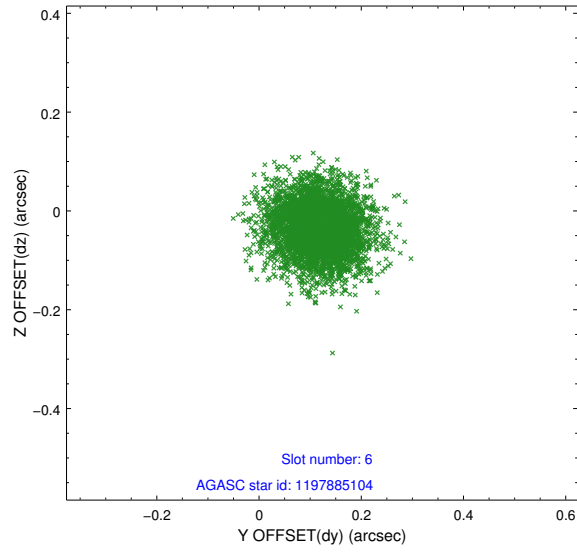
2.4.2 Slot 4



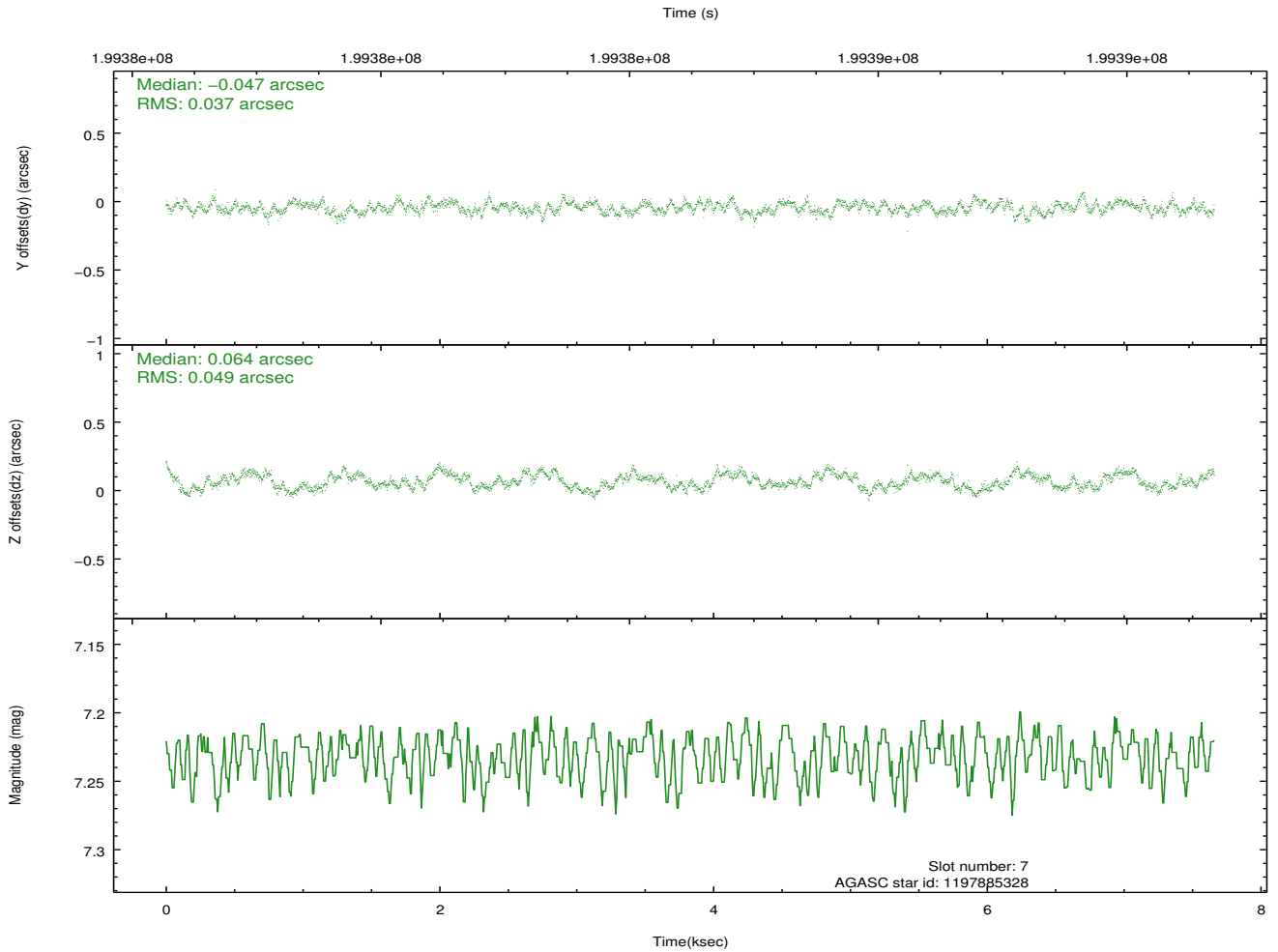
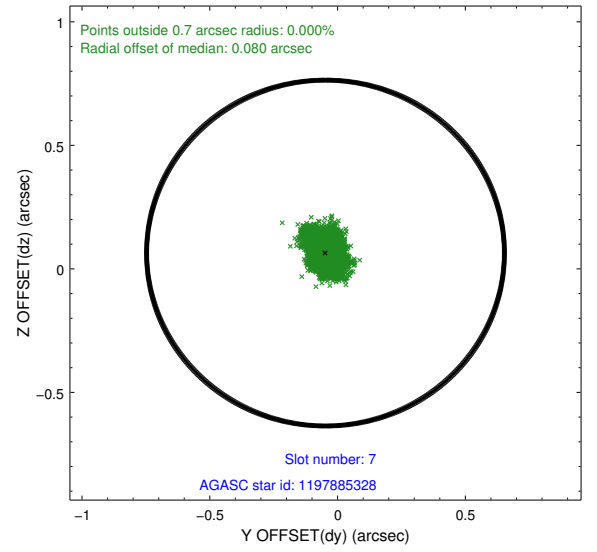
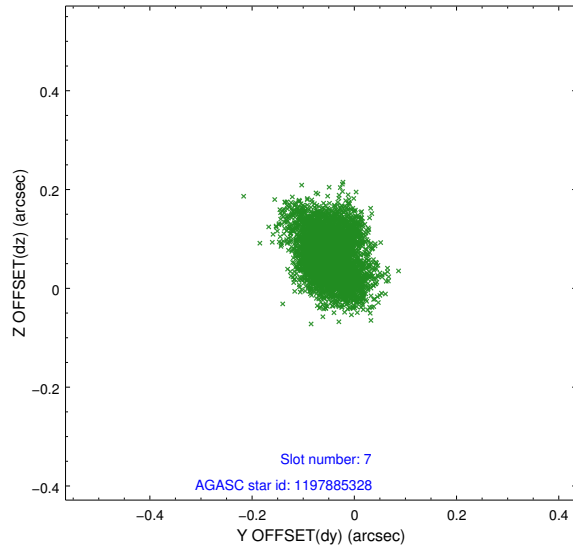
2.4.3 Slot 5



2.4.4 Slot 6

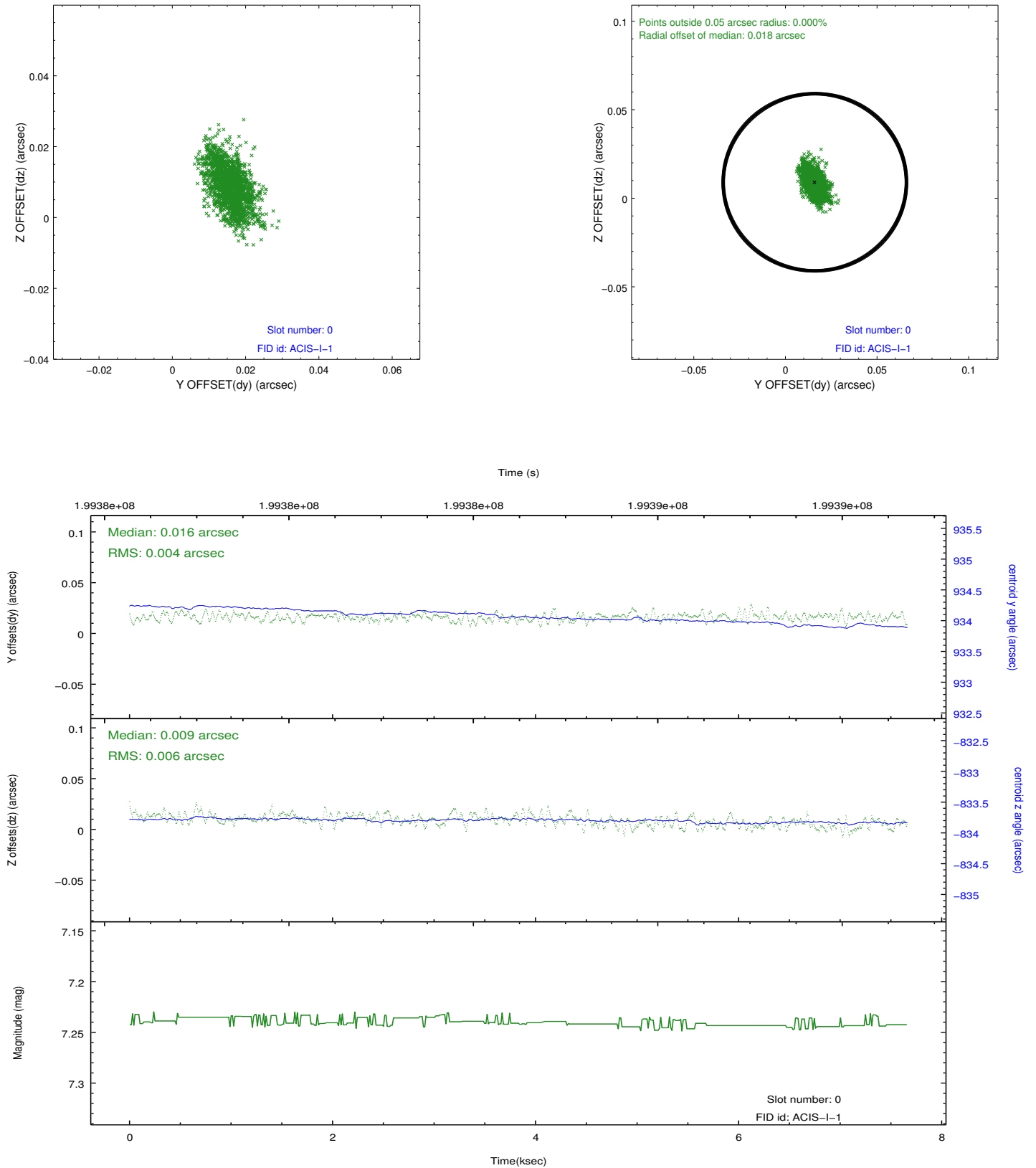


2.4.5 Slot 7

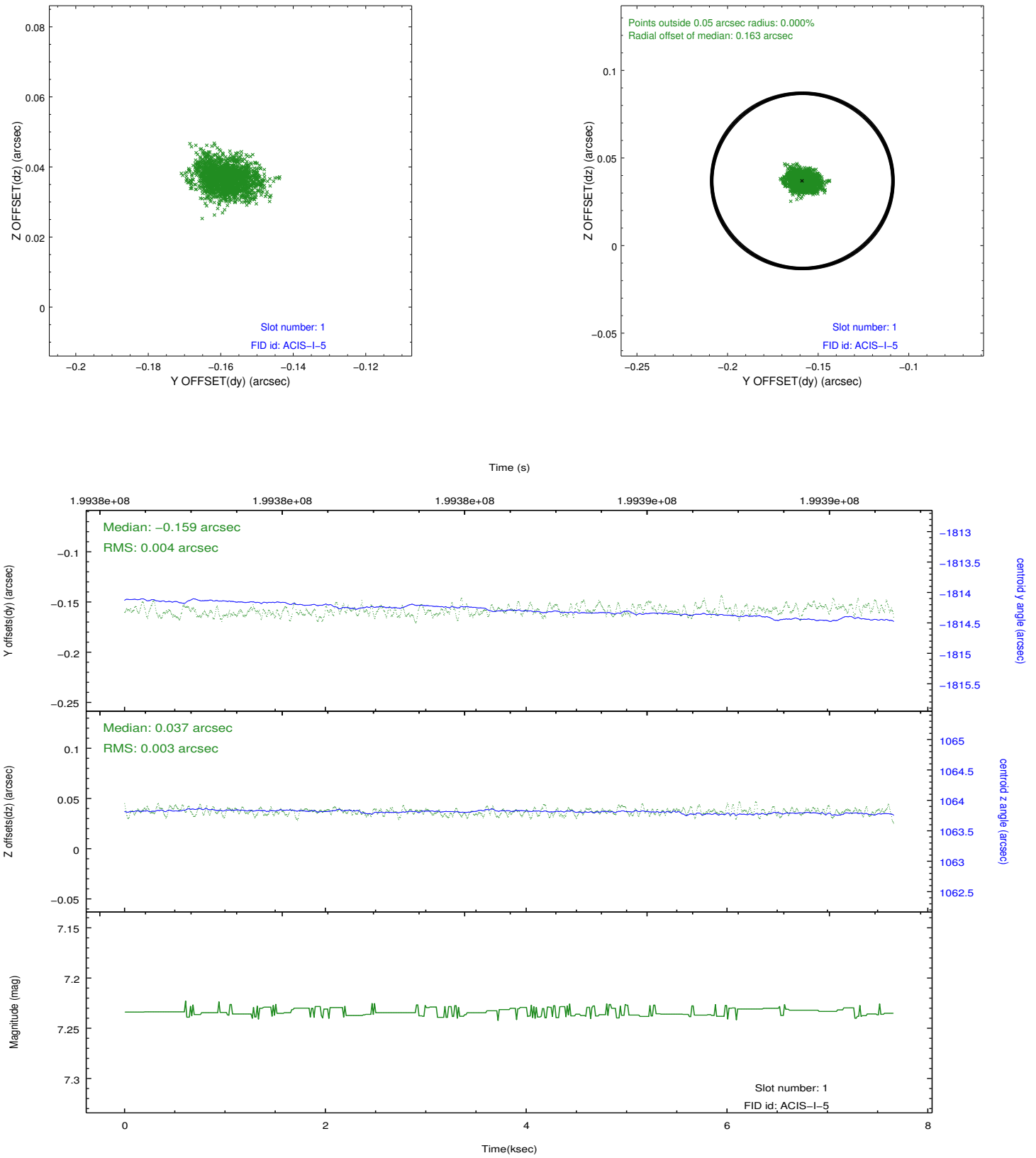


2.5 FID Slots

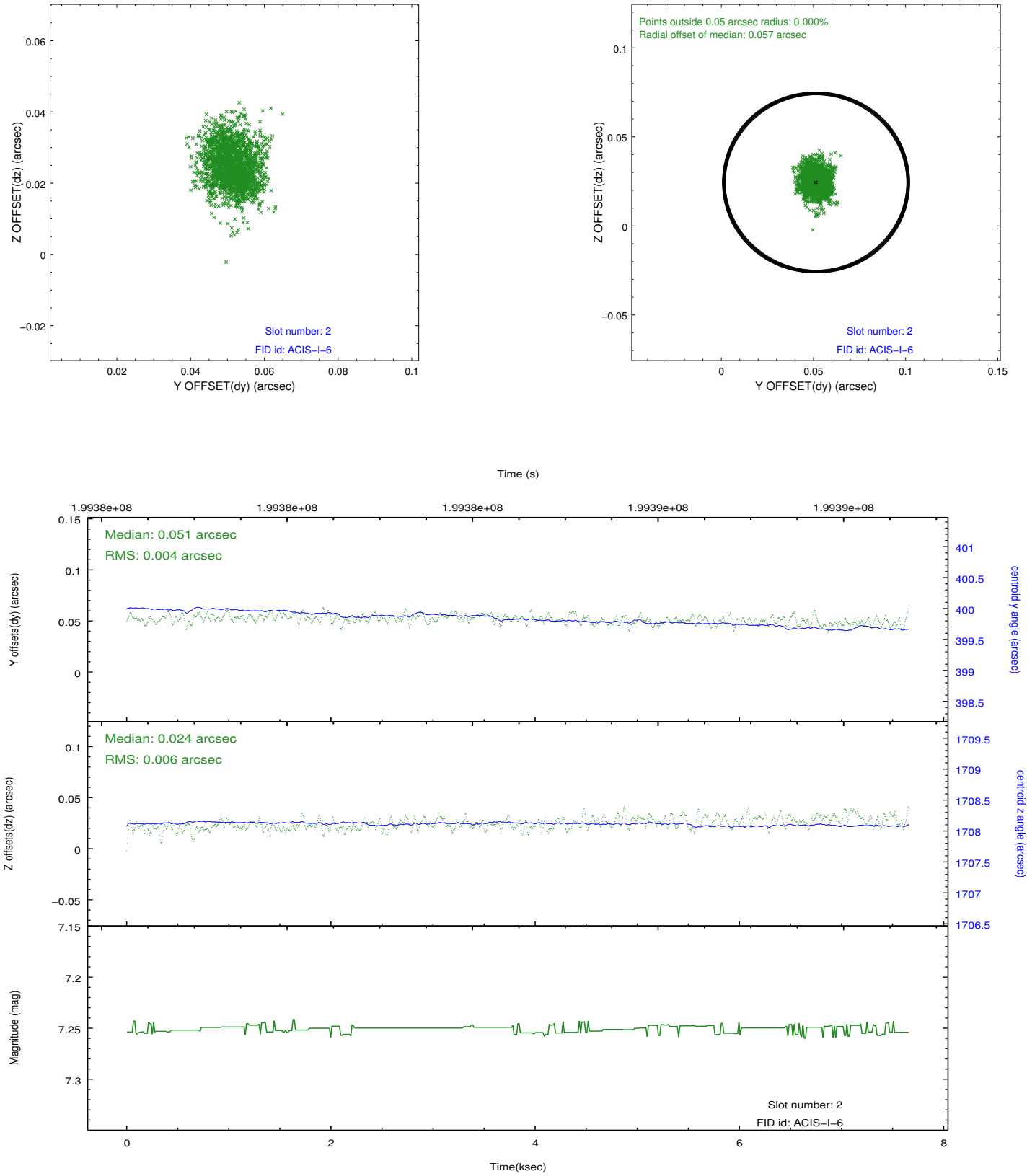
2.5.1 Slot 0



2.5.2 Slot 1



2.5.3 Slot 2



A Summary

A.1 Status

V&V Scientist	Jen Lauer
V&V Date (YYYY-MM-DD)	2012.12.14
V&V Edition	1
V&V Disposition and Status	OK
V&V Charge Time	7.241

A.2 Comments

Window constraint satisfied.