

V&V Reference Report

L2 ASCDS Version : 8.4.5

Observation 5125 - L2 Version 3
Chandra X-Ray Center

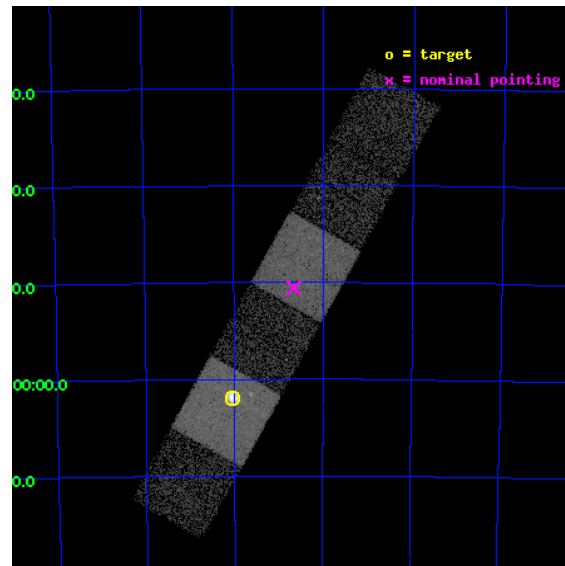
L2 Processing Date : Nov 9 2012

Contents

1	Front	2
2	OBI	3
2.1	OBI	3
2.1.1	Images	3
2.1.2	Bias	3
2.1.3	Parameters	4
2.1.4	Events	4
2.2	Compared Parameters	5
2.3	Aspect	6
2.4	Star Slots	9
2.4.1	Slot 3	9
2.4.2	Slot 4	10
2.4.3	Slot 5	11
2.4.4	Slot 6	12
2.4.5	Slot 7	13
2.5	FID Slots	14
2.5.1	Slot 0	14
2.5.2	Slot 1	15
2.5.3	Slot 2	16
A	Summary	17
A.1	Status	17
A.2	Comments	17

1 Front

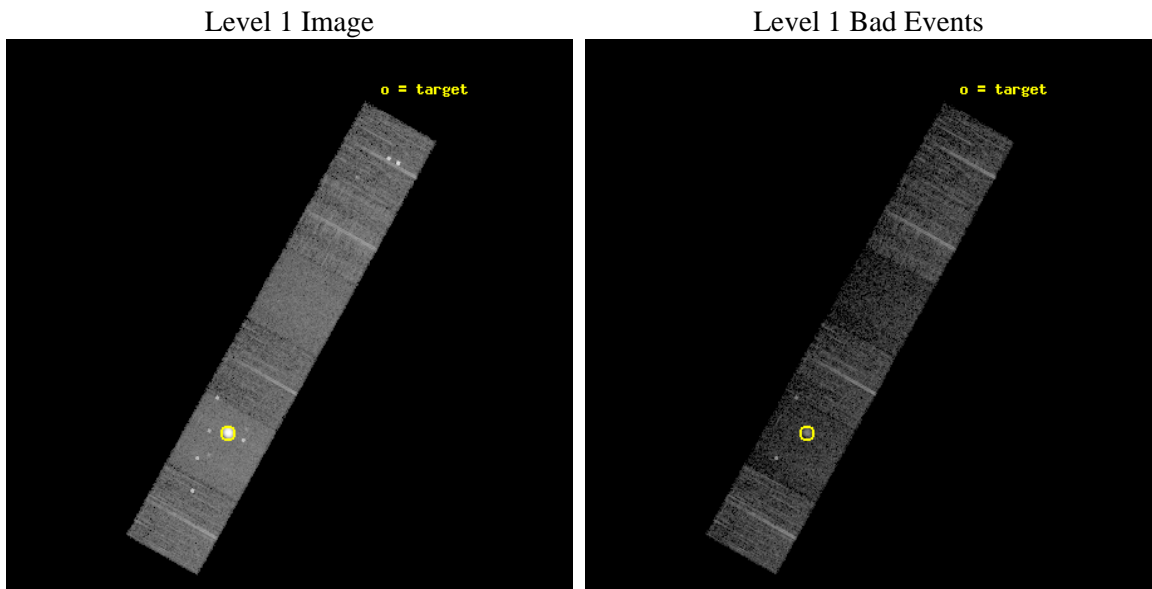
seq_num	590323	Sequence number
obs_id	5125	Observation id
title	AO5A ACIS-S Calibration Observations of E0102-72	Proposal title
observer	Dr. CXC Calibration	Principal investigator
object	E0102-72[S1,-120,13.29,0,0]	Source name
dtcycle	0	
cycle	P	events from which exps? Prim/Second/Both
ra_targ	16.01	Observer's specified target RA [deg]
dec_targ	-72.032028	Observer's specified target Dec [deg]
ra_nom	15.664060858234	Nominal RA [deg]
dec_nom	-71.842776042607	Nominal Dec [deg]
roll_nom	299.10096769798	Nominal Roll [deg]
revision	3	Processing version of data
ontime	8009.5999701619	Sum of GTIs [s]
livetime	7908.1775925376	Livetime [s]
ontime4	8009.5999701619	Sum of GTIs [s]
ontime5	8009.5999701619	Sum of GTIs [s]
ontime6	8009.5999701619	Sum of GTIs [s]
ontime7	8009.5999701619	Sum of GTIs [s]
ontime8	8006.3589998782	Sum of GTIs [s]
ontime9	8009.5999701619	Sum of GTIs [s]
l2events	111458	Number of level 2 events



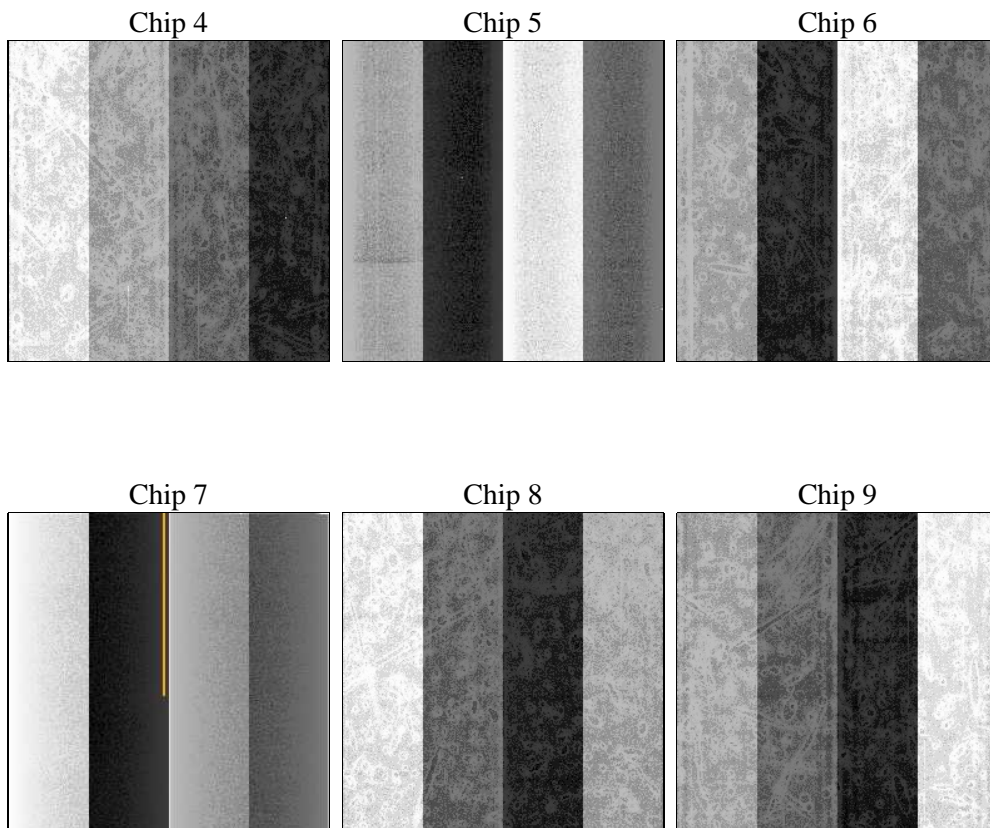
2 OBI

2.1 OBI

2.1.1 Images



2.1.2 Bias



2.1.3 Parameters

obi_num	0	Obi number	sched_exp_time	8250.000000	[s] Scheduled observation exposure time
ascdsver	8.4.5	Processing system revision	ontime	8009.5999701619	Sum of GTIs [s]
caldsver	4.5.2	 	ontime4	8009.5999701619	Sum of GTIs [s]
date	2012-11-09T07:42:09	Date and time of file creation	ontime5	8009.5999701619	Sum of GTIs [s]
revision	3	Processing version of data	ontime6	8009.5999701619	Sum of GTIs [s]
			ontime7	8009.5999701619	Sum of GTIs [s]
			ontime8	8006.3589998782	Sum of GTIs [s]
			ontime9	8009.5999701619	Sum of GTIs [s]
			l1events	317506	Number of level 1 events

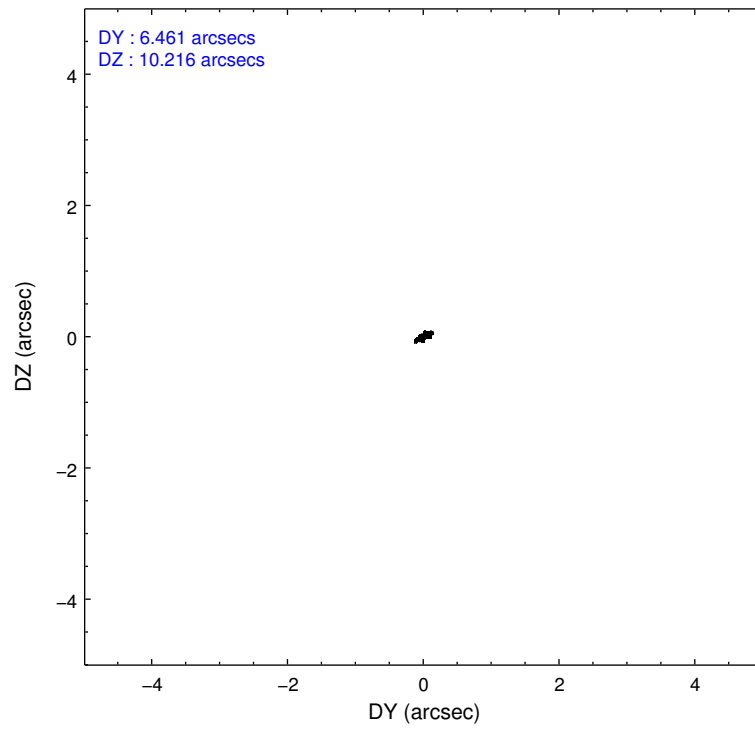
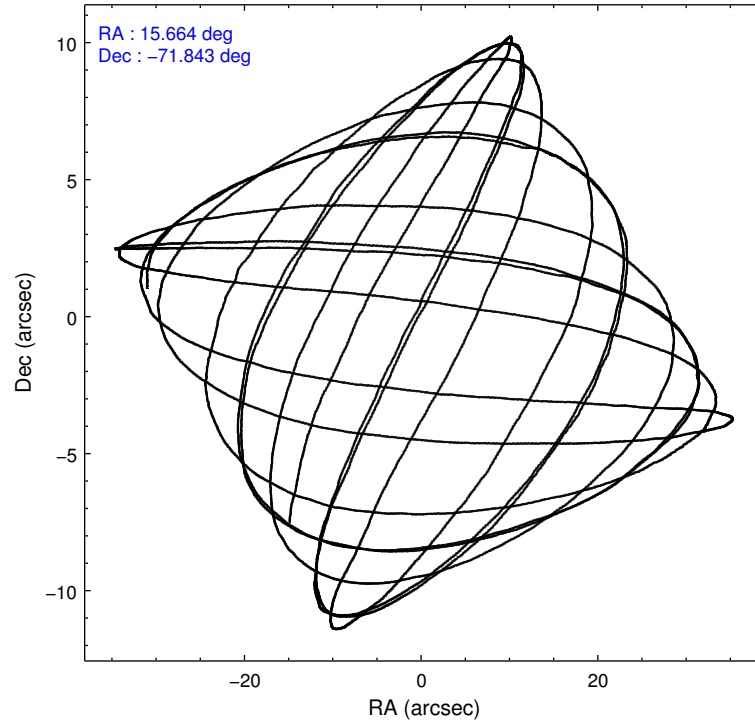
2.1.4 Events

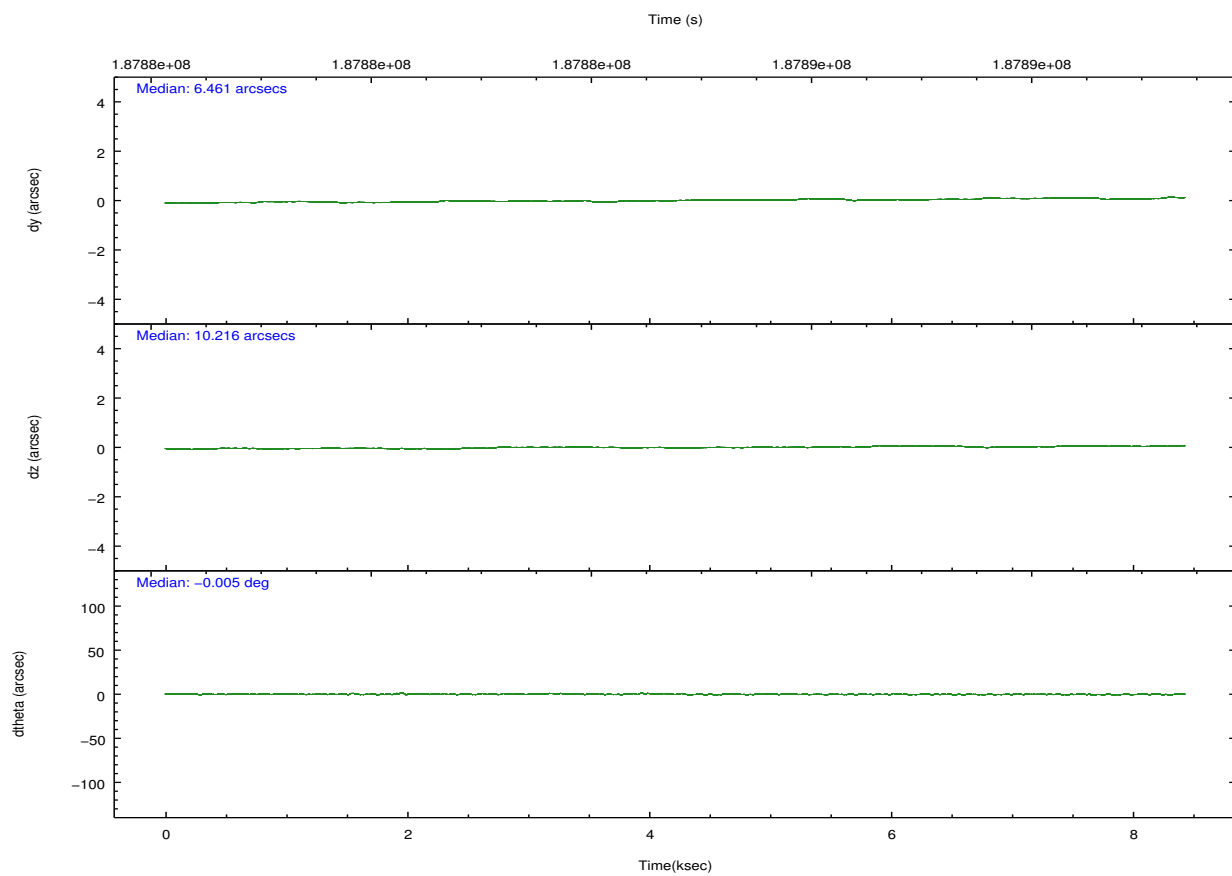
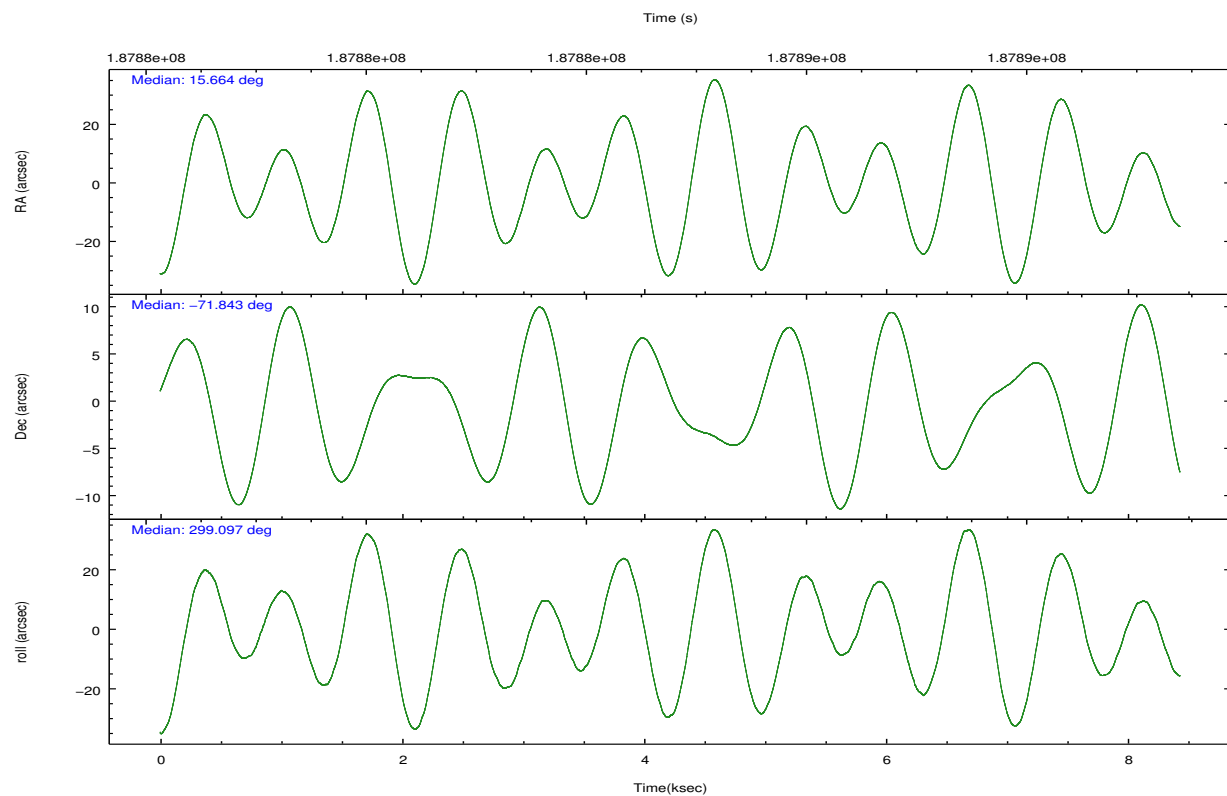
	ccd 4	ccd 5	ccd 6	ccd 7	ccd 8	ccd 9		ccd 4	ccd 5	ccd 6	ccd 7	ccd 8	ccd 9
level 1 events	45557	102695	36512	41470	47748	43524	grade 0 events	3911	28546	1959	2659	3099	9149
rejected events	39196	23353	32081	17794	37120	31809		8%	27%	5%	6%	6%	21%
rejected %	86%	22%	87%	42%	77%	73%	grade 1 events	42	795	14	26	44	42
								0%	0%	0%	0%	0%	0%
							grade 2 events	994	21272	850	4861	2330	867
								2%	20%	2%	11%	4%	1%
							grade 3 events	412	5858	437	2066	1123	447
								0%	5%	1%	4%	2%	1%
							grade 4 events	414	5751	433	2187	1080	451
								0%	5%	1%	5%	2%	1%
							grade 5 events	1259	4676	1326	3776	1882	1434
								2%	4%	3%	9%	3%	3%
							grade 6 events	630	17945	753	11911	3011	810
								1%	17%	2%	28%	6%	1%
							grade 7 events	37895	17852	30740	13984	35179	30324
								83%	17%	84%	33%	73%	69%

2.2 Compared Parameters

Parameter	Planned	Actual	Parameter	Planned	Actual
Instrument	ACIS	ACIS	Obspar format version number	7	7
Detector	ACIS-456789	ACIS-456789	Obspar file type	PREDICTED	ACTUAL
Grating	NONE	NONE	Obspar update status	NONE	UPDATED
Data mode	VFAINT	VFAINT	Number of optional ACIS chips dropped	0	0
Observation mode	POINTING	POINTING	On-chip summing requested	N	N
[deg] Pointing RA	15.588549	15.66406085823404	Subarray requested	NONE	NONE
[deg] Pointing Dec	-71.829129	-71.84277604260738	Alternating exposures requested	N	N
[deg] Pointing Roll	298.872595	299.1009676979818	[s] Primary exposure time	0.000000	3.2
[s] Window start time (MET)	181353664.184000	181353664.184000			
[s] Window stop time (MET)	189216064.184000	189216064.184000			
[mm] SIM focus pos	-0.684267	-0.6828225247311905			
[mm] SIM defocus	0	0.001444936568705701			
[mm] SIM translation stage pos	-190.132523	-190.1400660498719			
[mm] SIM translation stage offset	0	0.00754346686406393			
[s] Observation start time (MET)	187880718.184000	187880342.28613			
Observation start date	2003-12-15T13:04:14	2003-12-15T12:59:02			
[s] Observation end time (MET)	187888968.184000	187889102.96151			
Observation end date	2003-12-15T15:21:44	2003-12-15T15:25:02			
Read mode	TIMED	TIMED			

2.3 Aspect



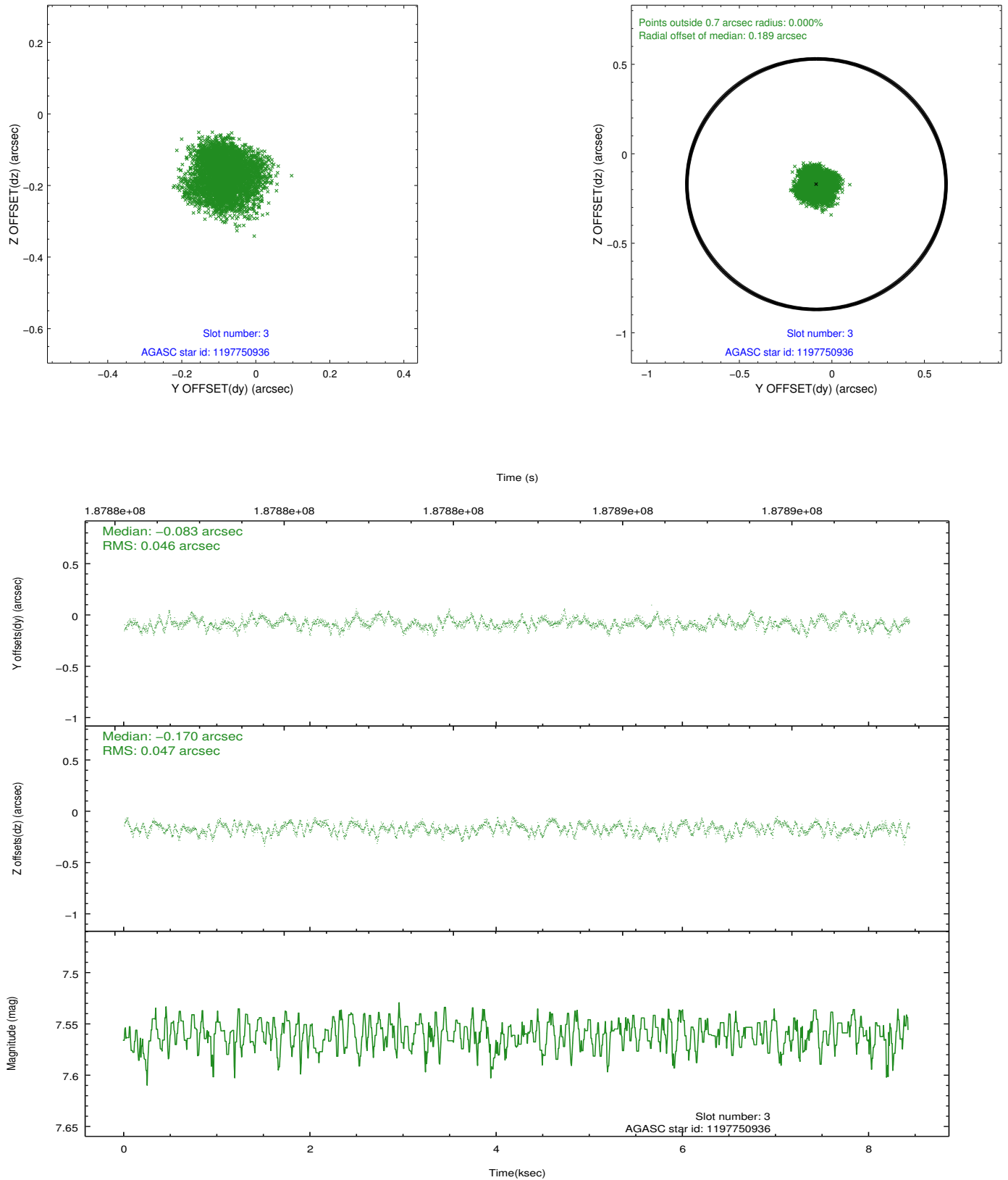


Slot Statistics

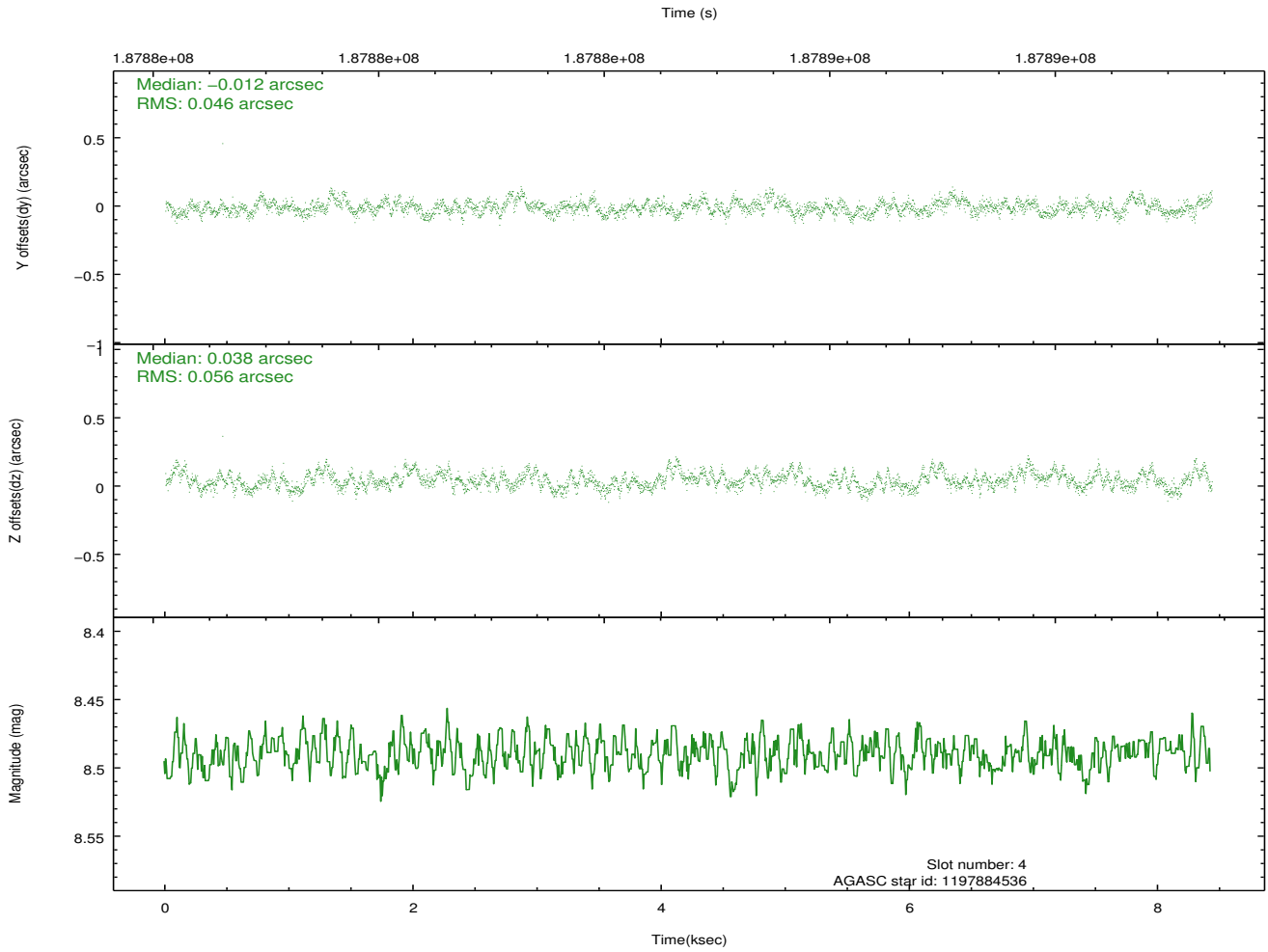
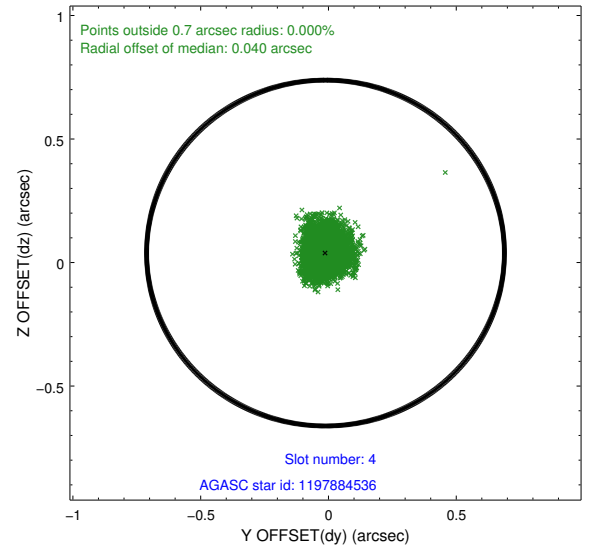
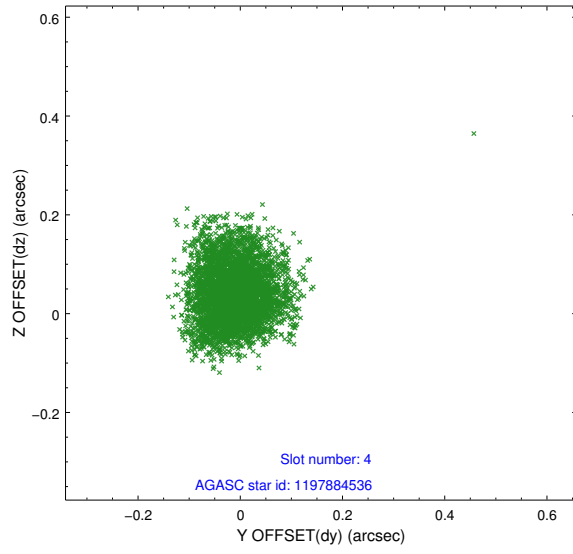
slot	status	id	mag	n_pts	med_dy	med_dz	dr1	dr2	ra	dec	mean_y	mean_z
0	FID	ACIS-S-2	7.10	2057	-0.059	-0.016	0.007	0.011	0.000000	0.000000	-759.23	-1731.49
1	FID	ACIS-S-4	7.20	2057	0.071	0.033	0.005	0.010	0.000000	0.000000	2153.85	176.40
2	FID	ACIS-S-5	7.23	2057	-0.043	-0.007	0.006	0.011	0.000000	0.000000	-1811.24	170.72
3	GUIDE	1197750936	7.56	4109	-0.083	-0.170	0.072	0.110	15.387940	-71.549550	-990.90	285.45
4	GUIDE	1197884536	8.49	4115	-0.012	0.038	0.077	0.124	17.160729	-71.835289	891.56	1523.38
5	GUIDE	1197884712	8.31	4109	0.105	0.094	0.064	0.099	16.087398	-72.252690	1602.39	-257.38
6	GUIDE	1197885104	9.37	4113	0.175	0.072	0.098	0.155	17.845067	-72.189368	2377.00	1526.74
7	GUIDE	1197750896	9.82	4112	-0.186	-0.035	0.105	0.173	12.910875	-71.532544	-2348.74	-2190.07

2.4 Star Slots

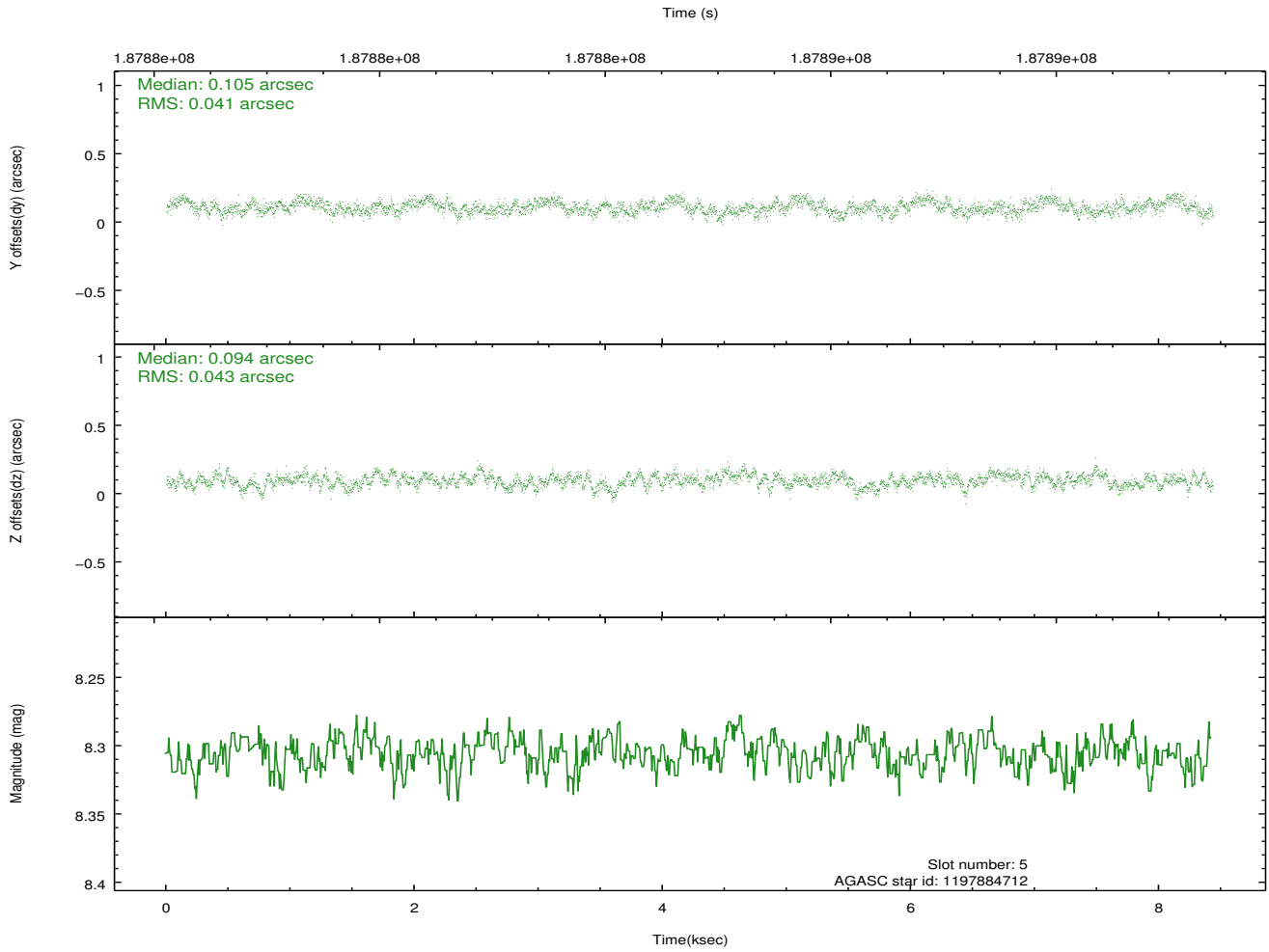
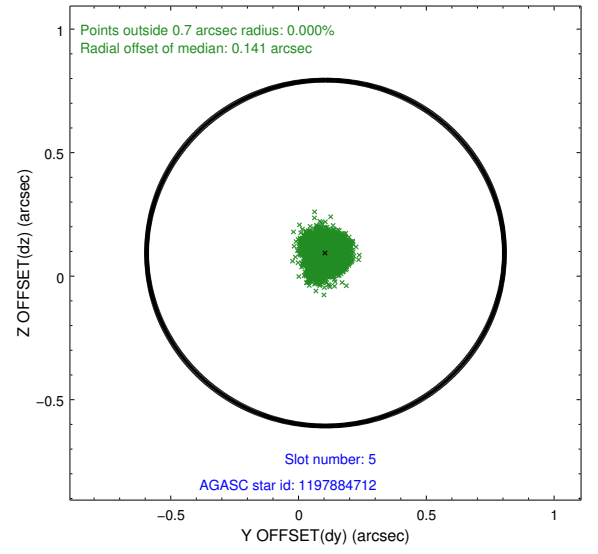
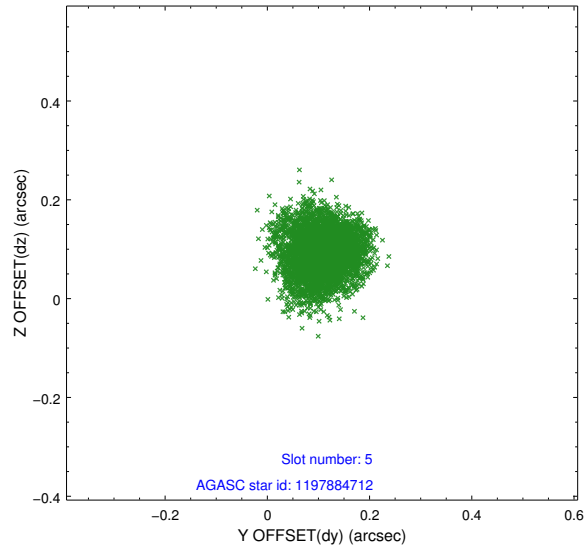
2.4.1 Slot 3



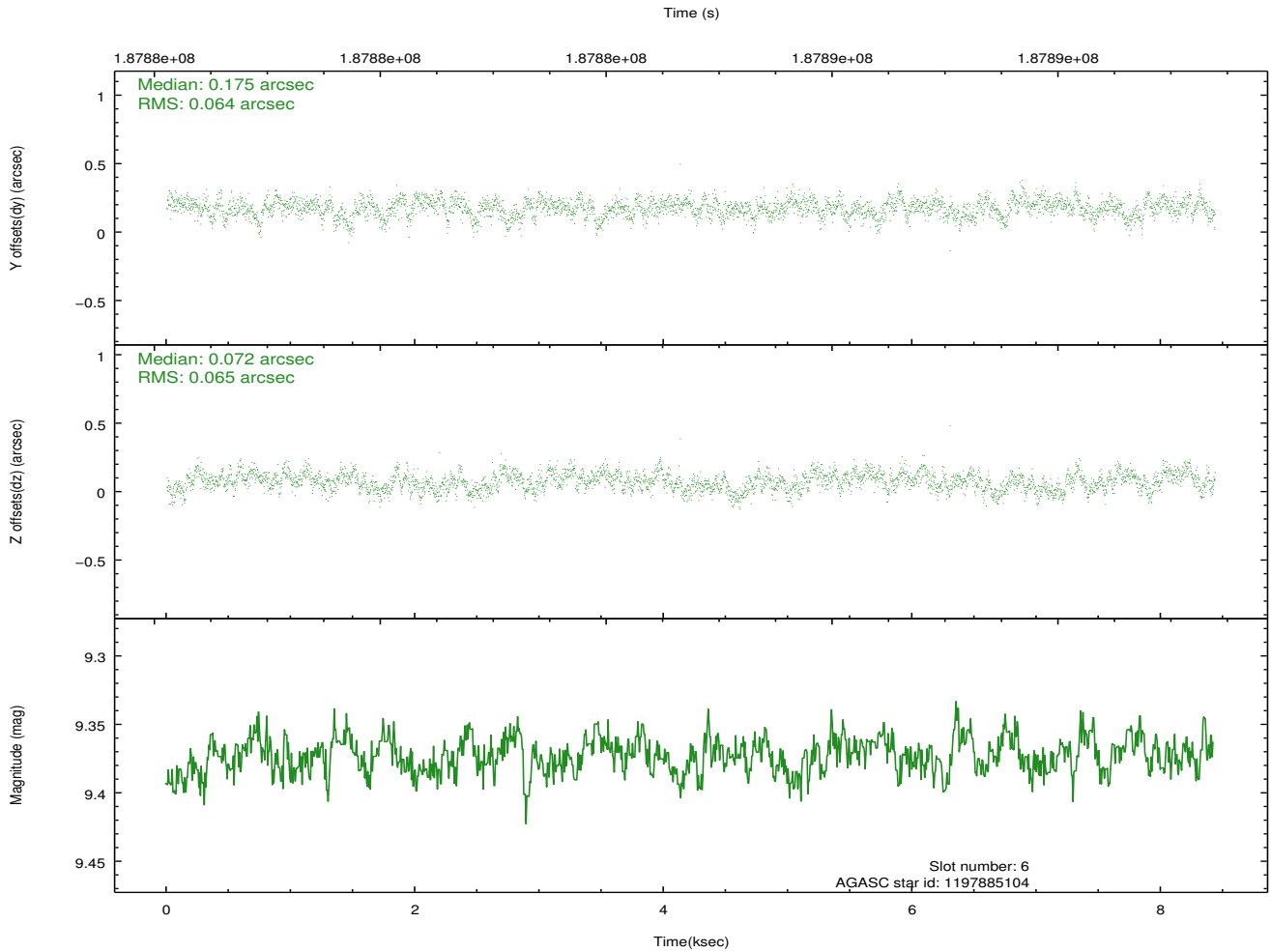
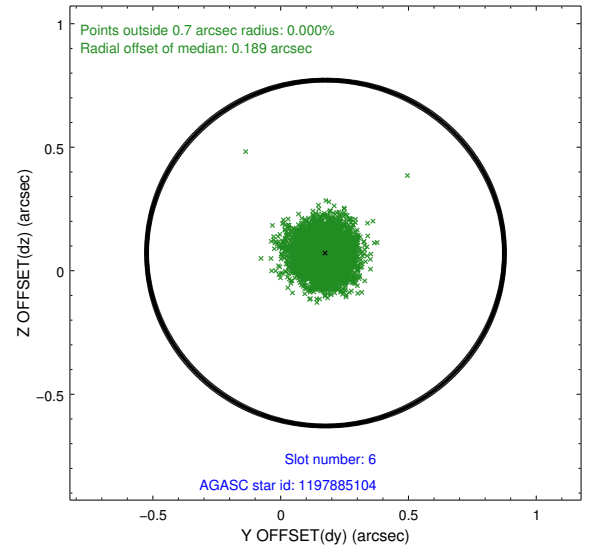
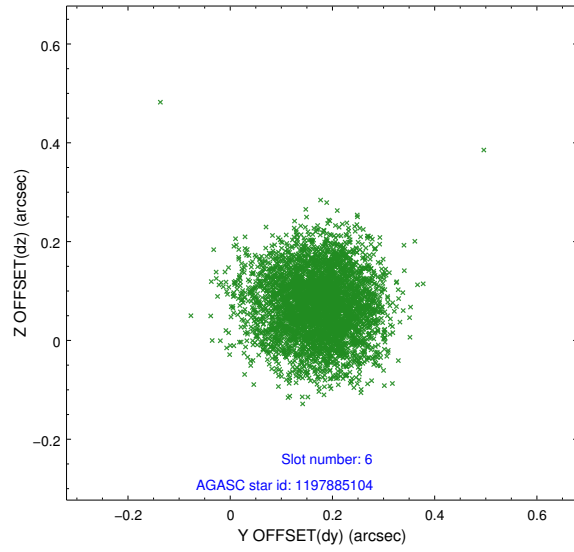
2.4.2 Slot 4



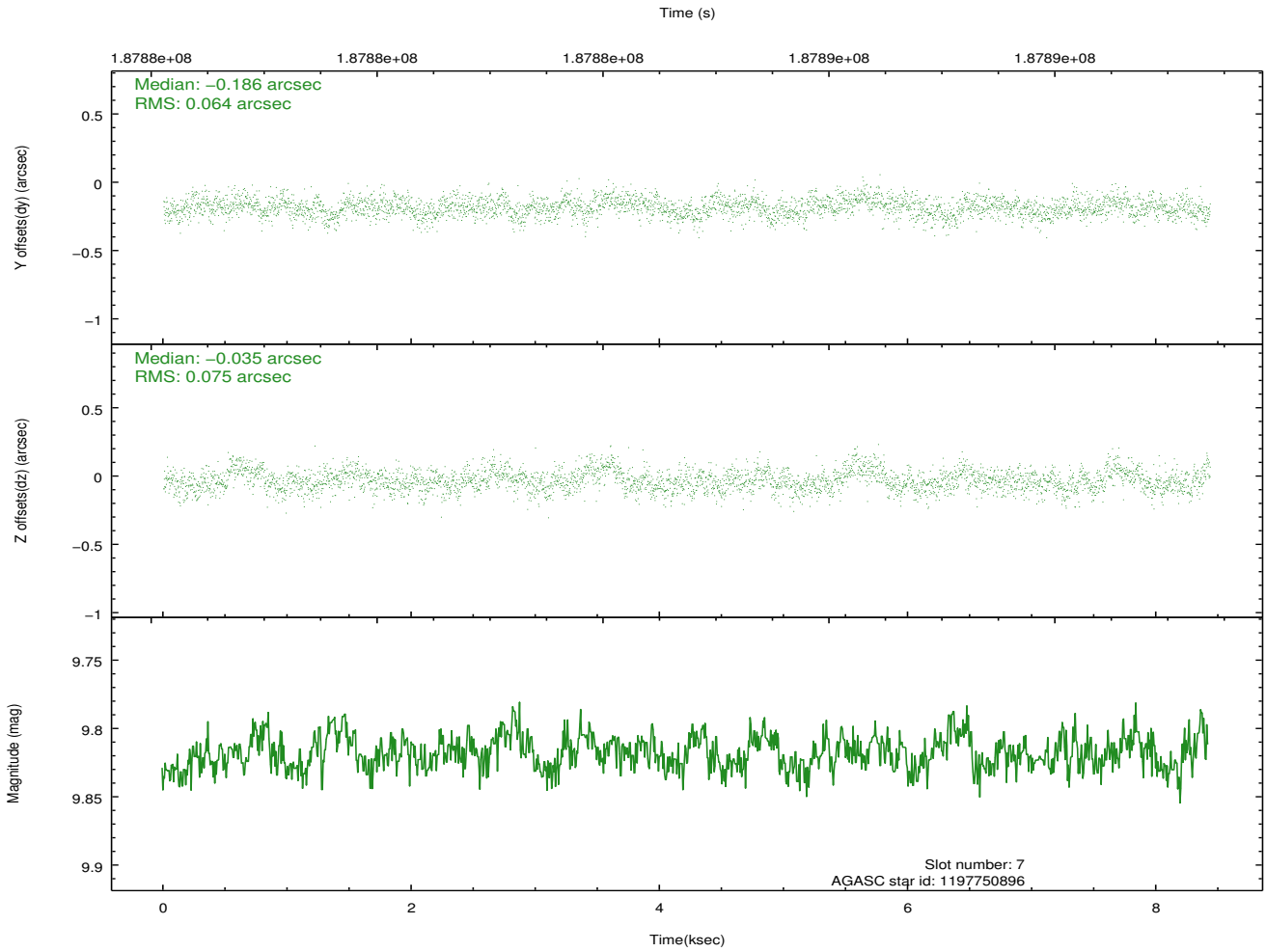
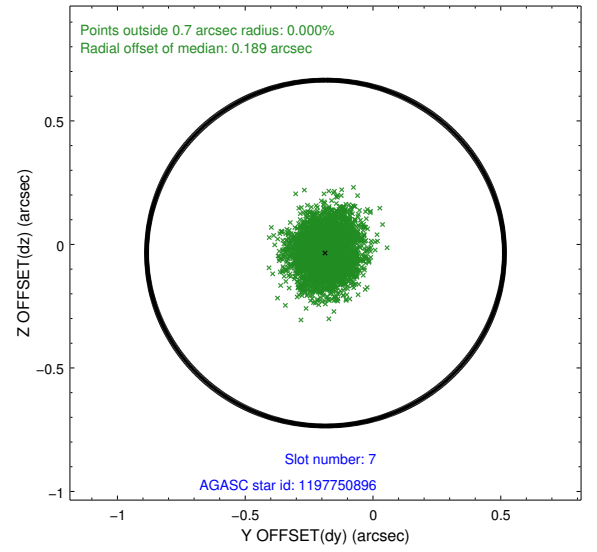
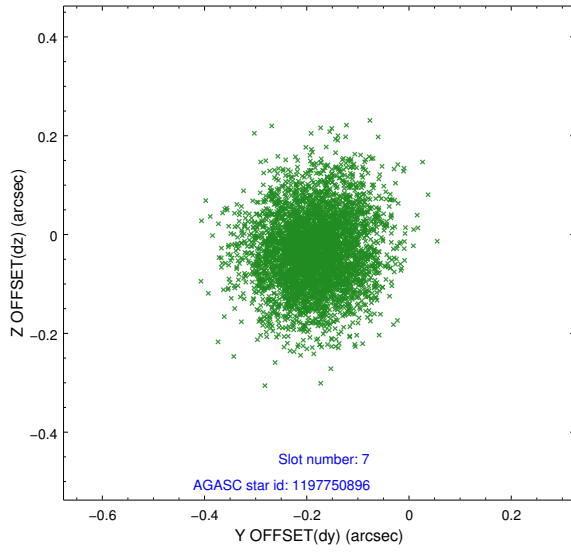
2.4.3 Slot 5



2.4.4 Slot 6

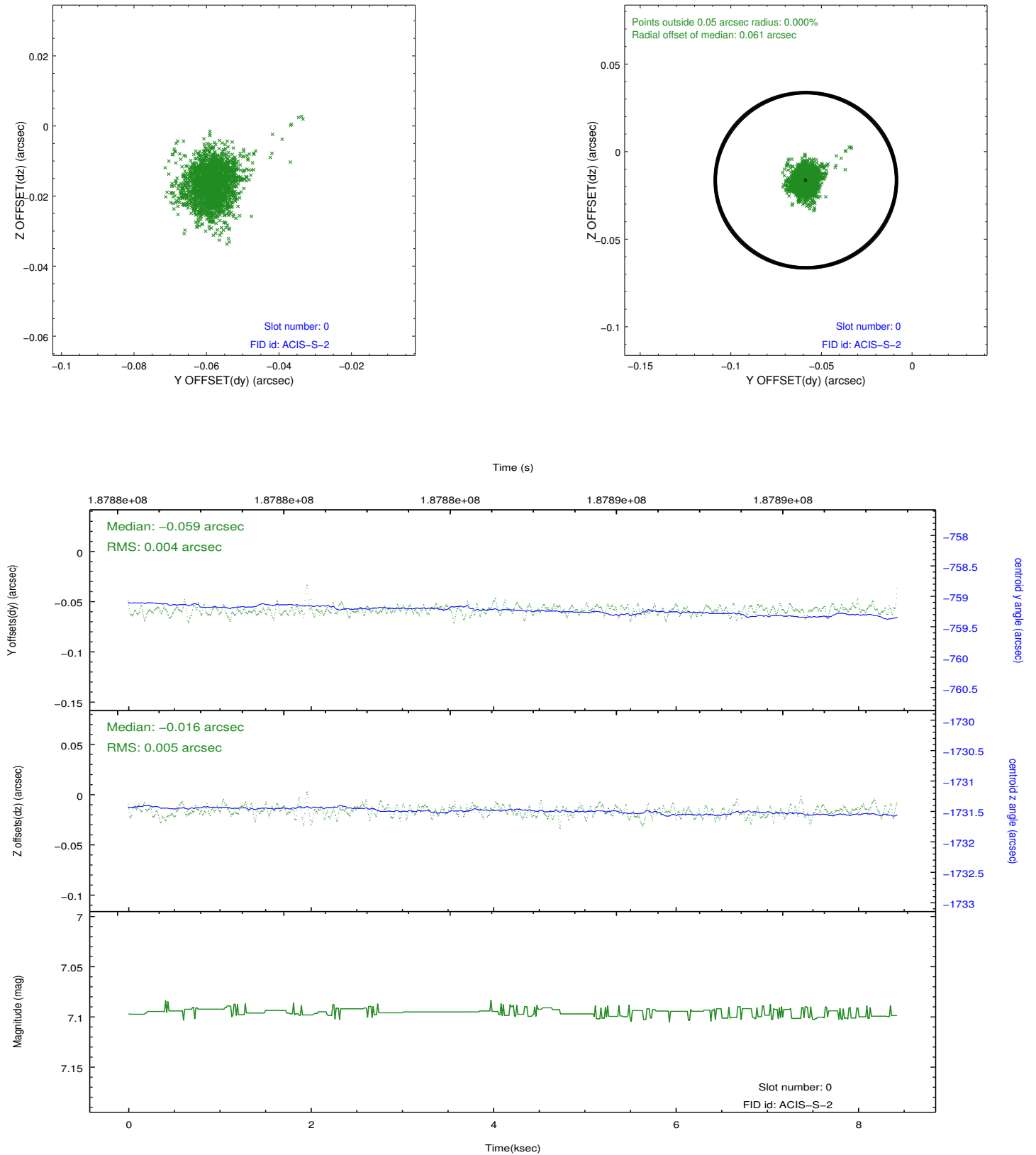


2.4.5 Slot 7

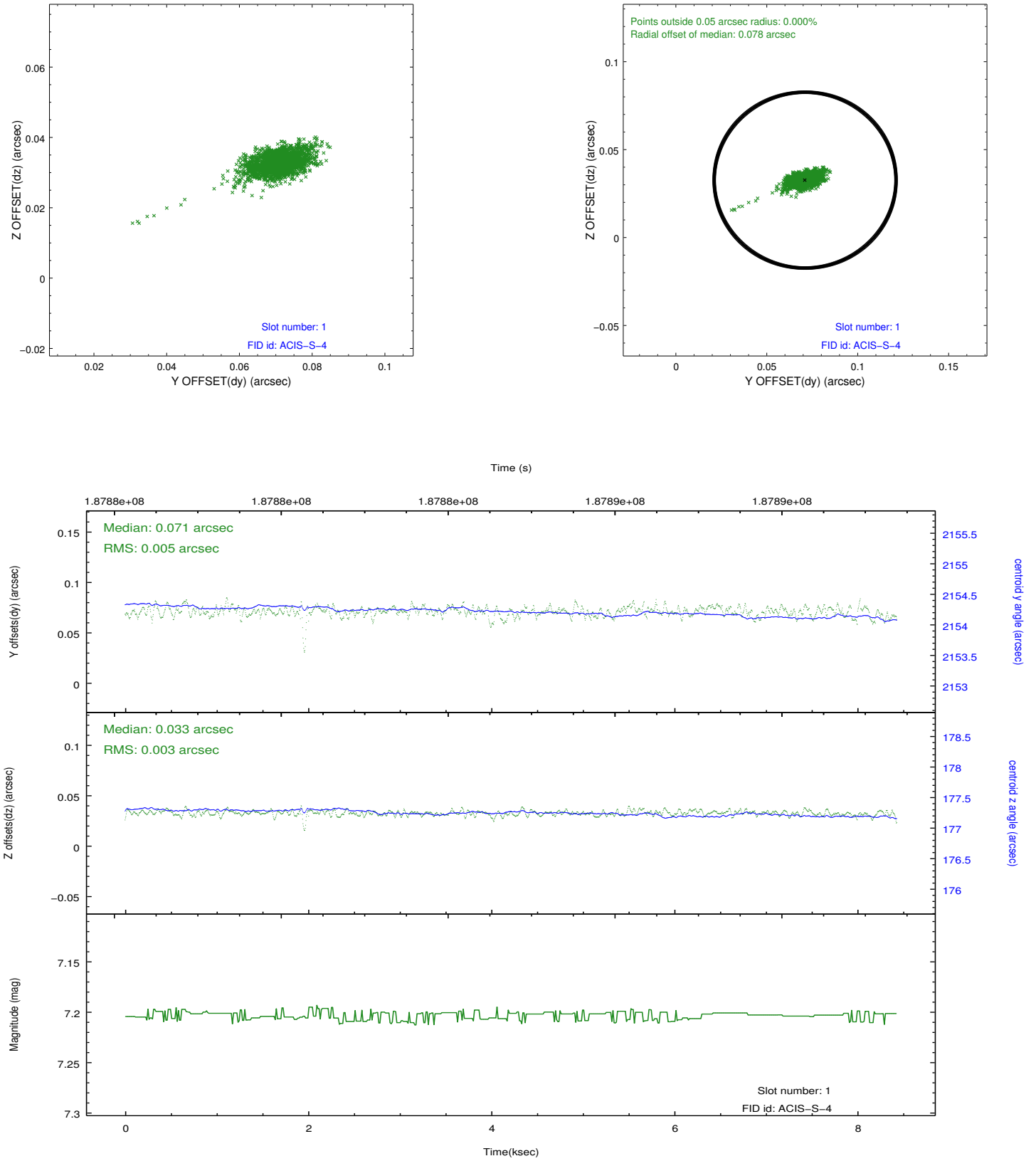


2.5 FID Slots

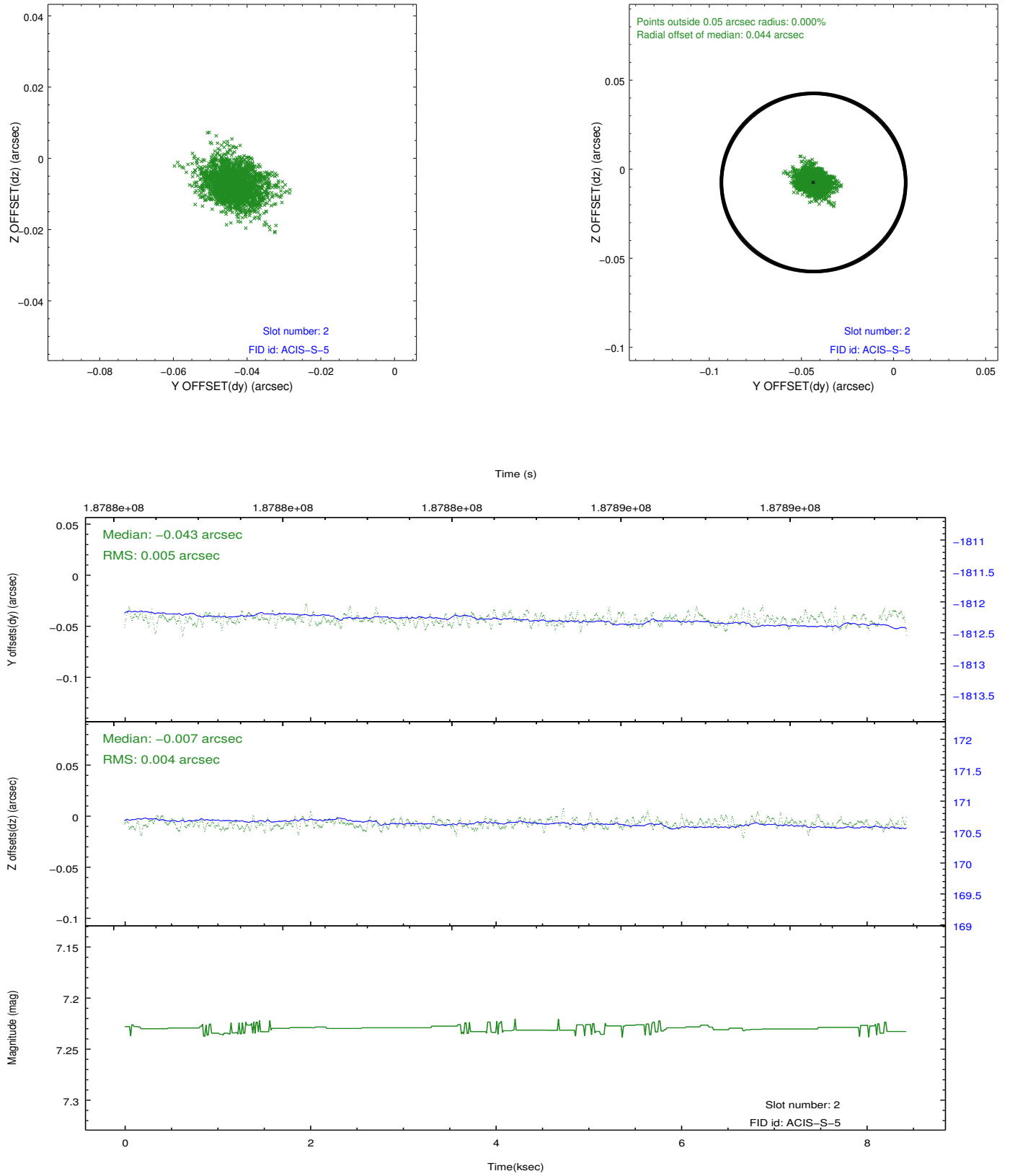
2.5.1 Slot 0



2.5.2 Slot 1



2.5.3 Slot 2



A Summary

A.1 Status

V&V Scientist	Jen Lauer
V&V Date (YYYY-MM-DD)	2012.12.03
V&V Edition	1
V&V Disposition and Status	OK
V&V Charge Time	8.012

A.2 Comments

Window constraint met.