

# V&V Reference Report

## L2 ASCDS Version : 7.6.8

Observation 5125 - L2 Version 001  
Chandra X-Ray Center

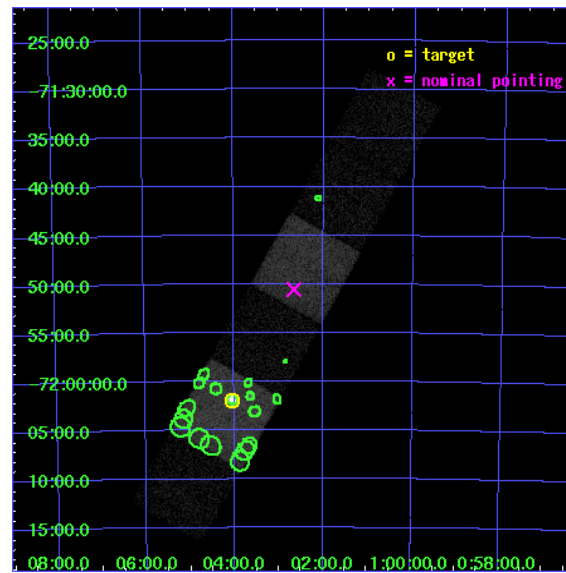
L2 Processing Date : Jun 23 2006

## Contents

<b>1</b>	<b>Front</b>	<b>2</b>
<b>2</b>	<b>OBI</b>	<b>3</b>
2.1	OBI . . . . .	3
2.1.1	Images . . . . .	3
2.1.2	Bias . . . . .	3
2.1.3	Parameters . . . . .	4
2.1.4	Events . . . . .	4
2.2	Compared Parameters . . . . .	5
2.3	Aspect . . . . .	6
2.4	Star Slots . . . . .	9
2.4.1	Slot 3 . . . . .	9
2.4.2	Slot 4 . . . . .	10
2.4.3	Slot 5 . . . . .	11
2.4.4	Slot 6 . . . . .	12
2.4.5	Slot 7 . . . . .	13
2.5	FID Slots . . . . .	14
2.5.1	Slot 0 . . . . .	14
2.5.2	Slot 1 . . . . .	15
2.5.3	Slot 2 . . . . .	16
<b>3</b>	<b>Point Sources</b>	<b>17</b>
<b>A</b>	<b>Summary</b>	<b>18</b>
A.1	Status . . . . .	18
A.2	Comments . . . . .	18

# 1 Front

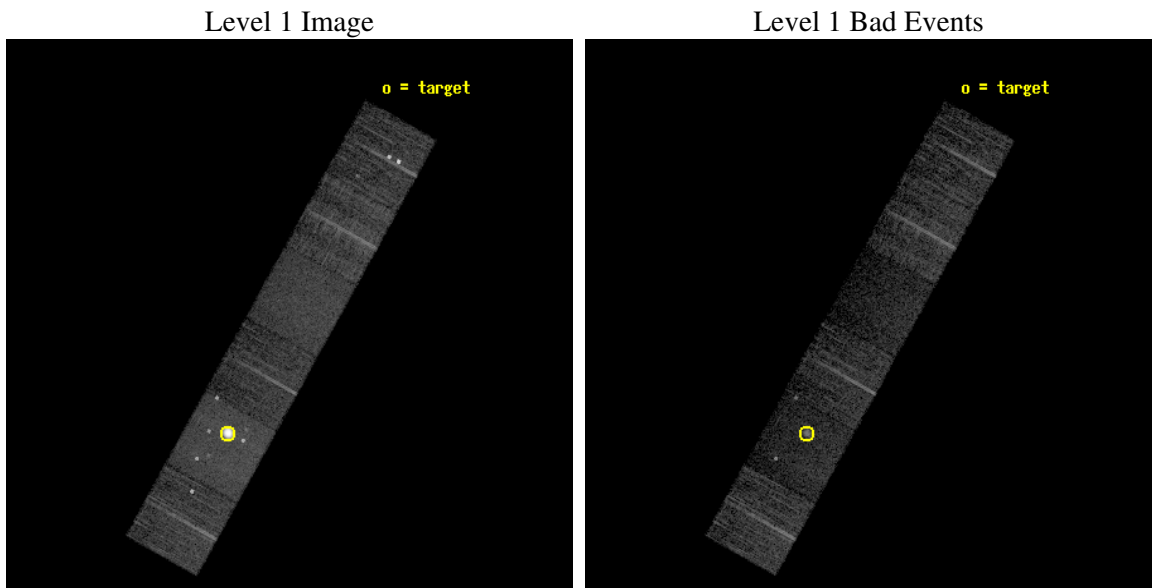
seq_num	590323
obs_id	5125
title	AO5A ACIS-S Calibration Observations of E0102-72
observer	Dr. CXC Calibration
object	E0102-72[S1,-120,13.29,0,0]
dtcycle	0
cycle	P
ra_targ	16.01
dec_targ	-72.032028
ra_nom	15.664017708251
dec_nom	-71.842751741173
roll_nom	299.10092668939
revision	2
ontime	8009.5999701619
livetime	7908.1775925376
ontime4	8009.5999701619
ontime5	8009.5999701619
ontime6	8009.5999701619
ontime7	8009.5999701619
ontime8	8006.3589998782
ontime9	8009.5999701619
l2events	108802



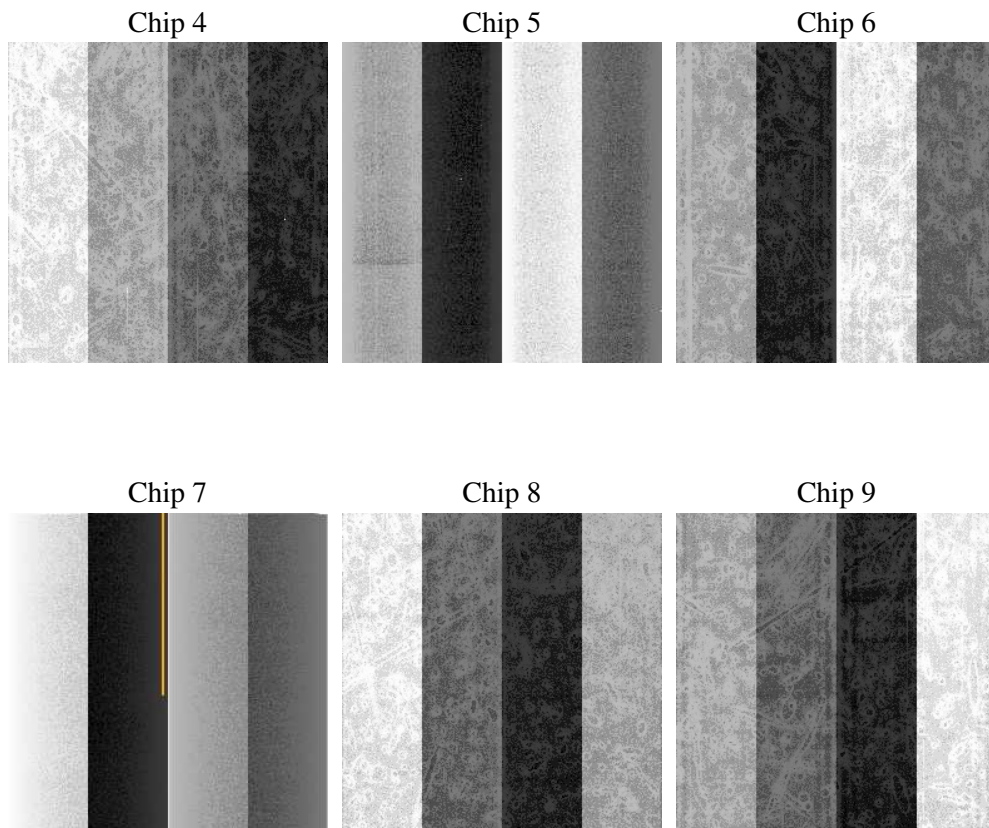
## 2 OBI

### 2.1 OBI

#### 2.1.1 Images



#### 2.1.2 Bias



### 2.1.3 Parameters

obi_num	0
ascdsver	7.6.8
caldsver	3.2.2
date	2006-06-23T17:05:39
revision	2

sched_exp_time	8250.000000
ontime	8014.9957683086
ontime4	8014.9957683086
ontime5	8014.9957683086
ontime6	8014.9957683086
ontime7	8014.9957683086
ontime8	8011.7547980249
ontime9	8014.9957683086
l1events	317506

### 2.1.4 Events

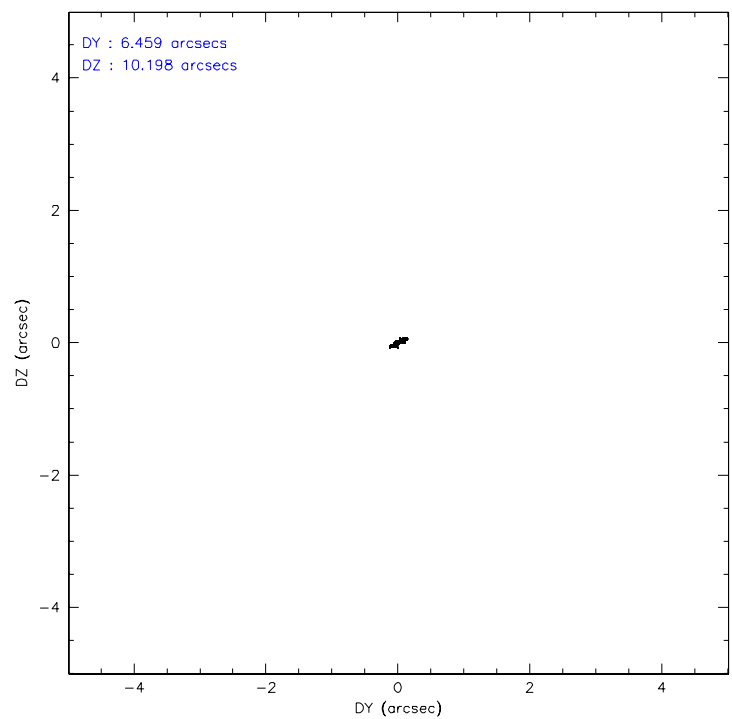
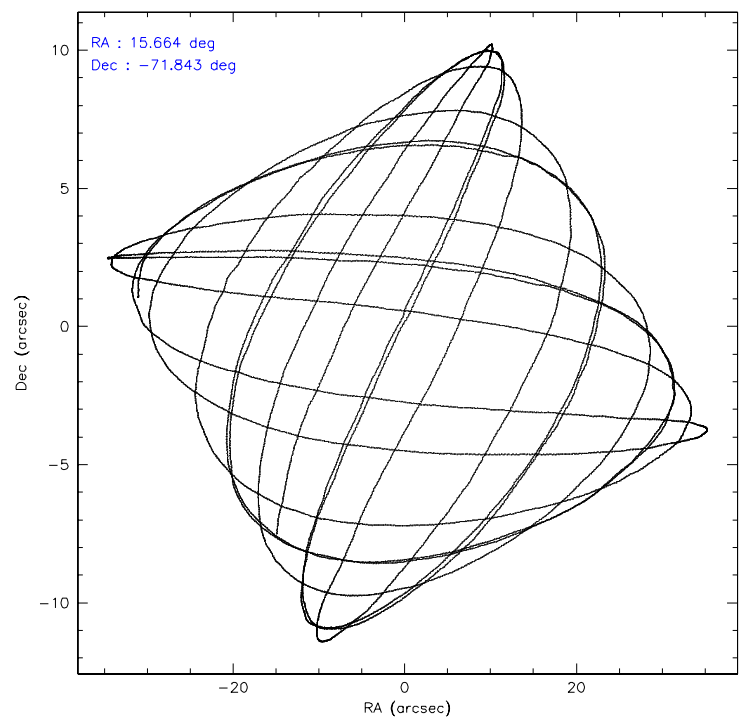
	ccd 4	ccd 5	ccd 6	ccd 7	ccd 8	ccd 9
level 1 events	45557	102695	36512	41470	47748	43524
rejected events	39199	24422	32081	19483	37116	31812
rejected %	86%	23%	87%	46%	77%	73%

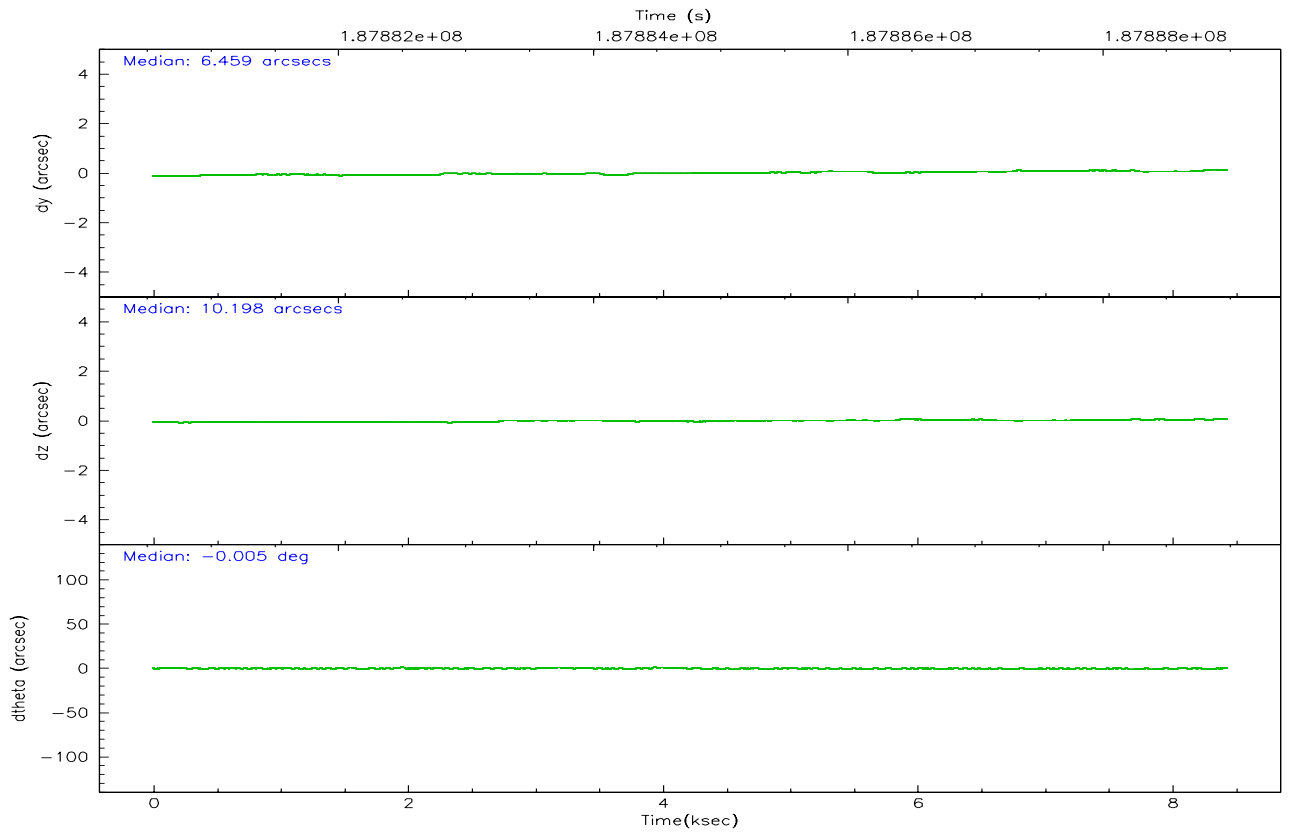
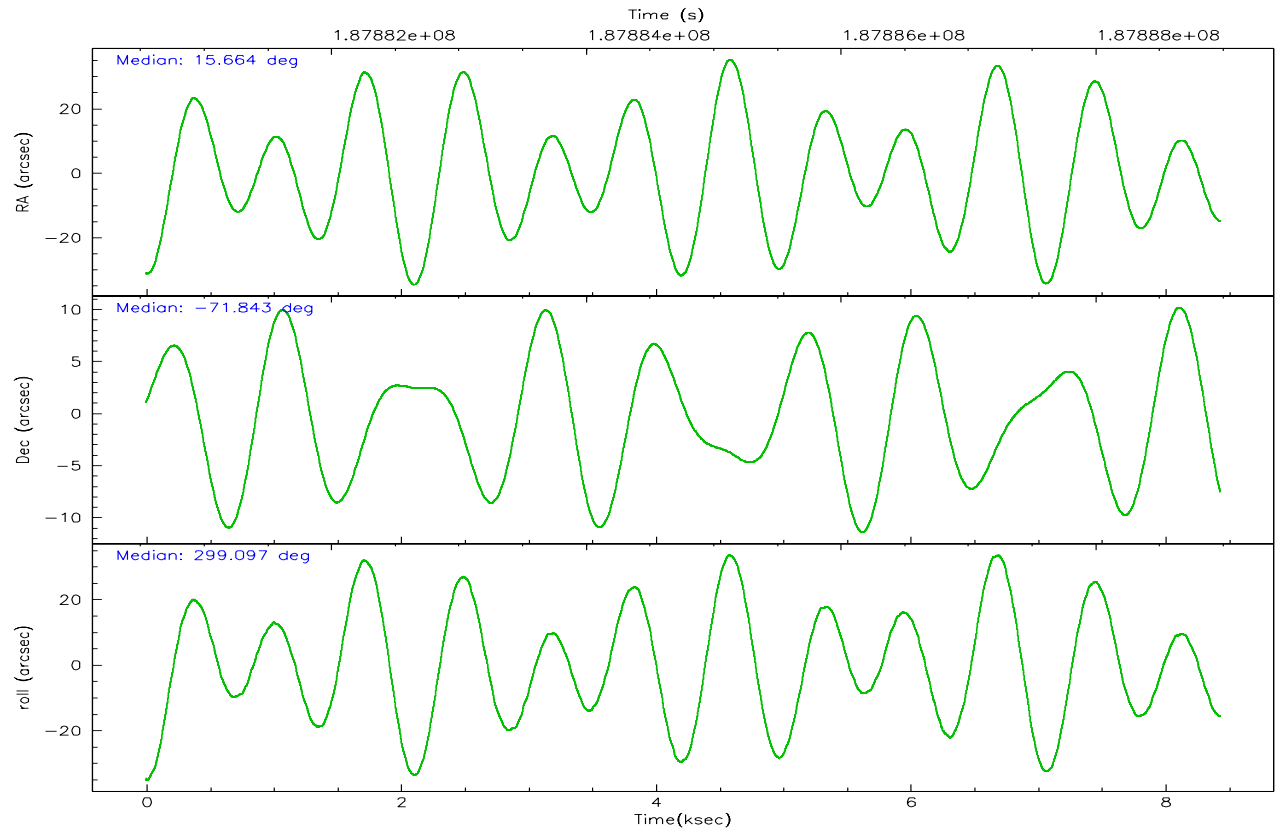
	ccd 4	ccd 5	ccd 6	ccd 7	ccd 8	ccd 9
grade 0 events	3911	26021	1959	1894	3099	9149
	8%	25%	5%	4%	6%	21%
grade 1 events	42	725	14	20	44	42
	0%	0%	0%	0%	0%	0%
grade 2 events	994	22958	850	5449	2330	867
	2%	22%	2%	13%	4%	1%
grade 3 events	412	4991	437	1282	1123	447
	0%	4%	1%	3%	2%	1%
grade 4 events	414	5139	433	1322	1080	451
	0%	5%	1%	3%	2%	1%
grade 5 events	1259	3293	1326	2797	1882	1434
	2%	3%	3%	6%	3%	3%
grade 6 events	630	19217	753	12063	3011	810
	1%	18%	2%	29%	6%	1%
grade 7 events	37895	20351	30740	16643	35179	30324
	83%	19%	84%	40%	73%	69%

## 2.2 Compared Parameters

Parameter	Planned	Actual	Parameter	Planned	Actual
Instrument	ACIS	ACIS	Obspar format version number	6	6
Detector	ACIS-456789	ACIS-456789	Obspar file type	PREDICTED	ACTUAL
Grating	NONE	NONE	Obspar update status	NONE	UPDATED
Data mode	VFAINT	VFAINT	On-chip summing requested	N	N
Observation mode	POINTING	POINTING	Subarray requested	NONE	NONE
Pointing RA	15.588549	15.66401770825133	Alternating exposures requested	N	N
Pointing Dec	-71.829129	-71.84275174117269	Primary exposure time	0.000000	3.2
Pointing Roll	298.872595	299.1009266893915			
Window start time	181353664.184000	181353664.184000			
Window stop time	189216064.184000	189216064.184000			
SIM focus pos (mm)	-0.684267	-0.6828225247311905			
SIM defocus (mm)	0	0.001444936568705701			
SIM translation stage pos (mm)	-190.132523	-190.1400660498719			
SIM translation stage offset (mm)	0	0.00754346686406393			
Observation start time	187880718.184000	187880342.28613			
Observation start date	2003-12-15T13:04:14	2003-12-15T12:59:02			
Observation end time	187888968.184000	187889102.96151			
Observation end date	2003-12-15T15:21:44	2003-12-15T15:25:02			
Read mode	TIMED	TIMED			

## 2.3 Aspect



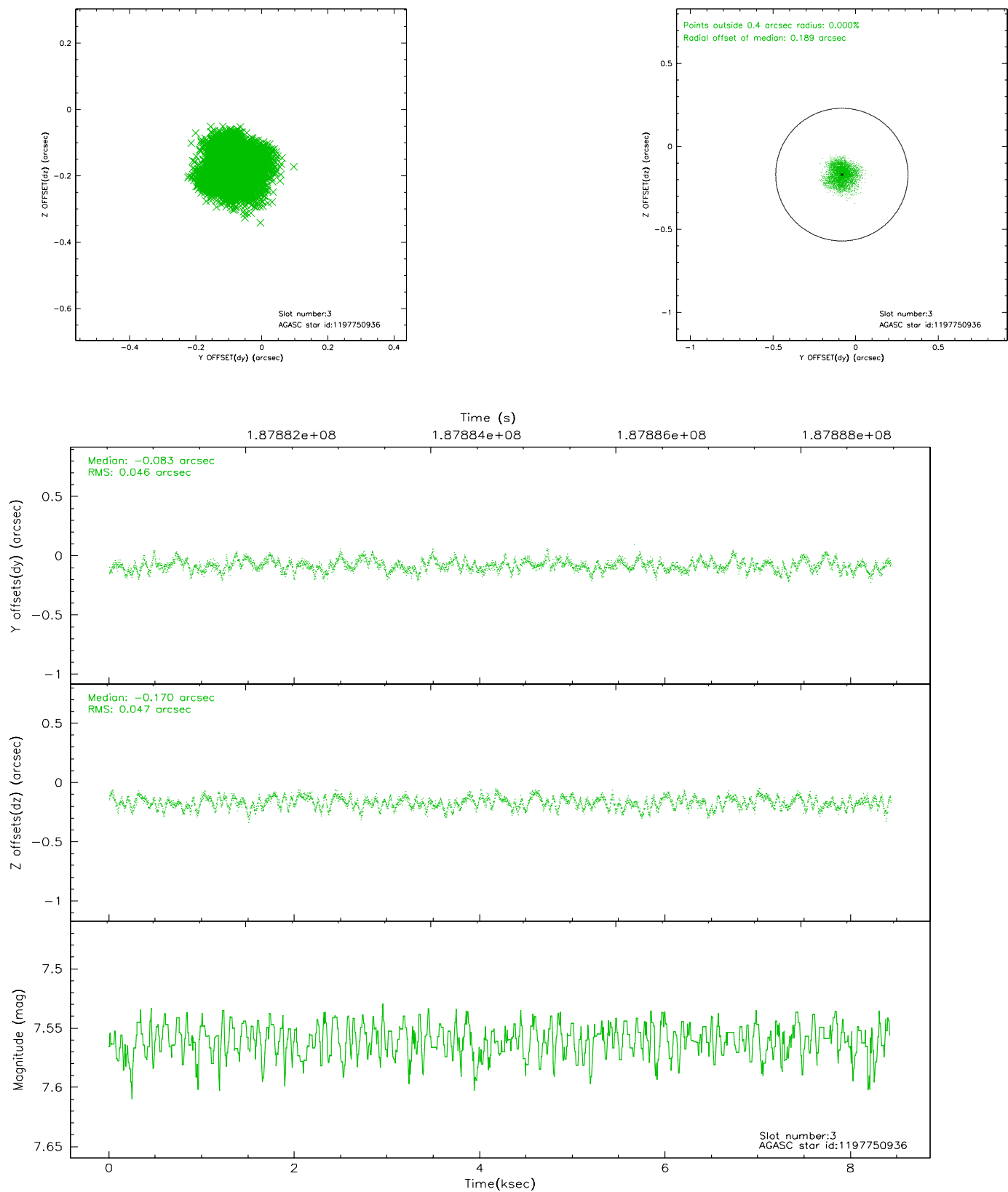


### Slot Statistics

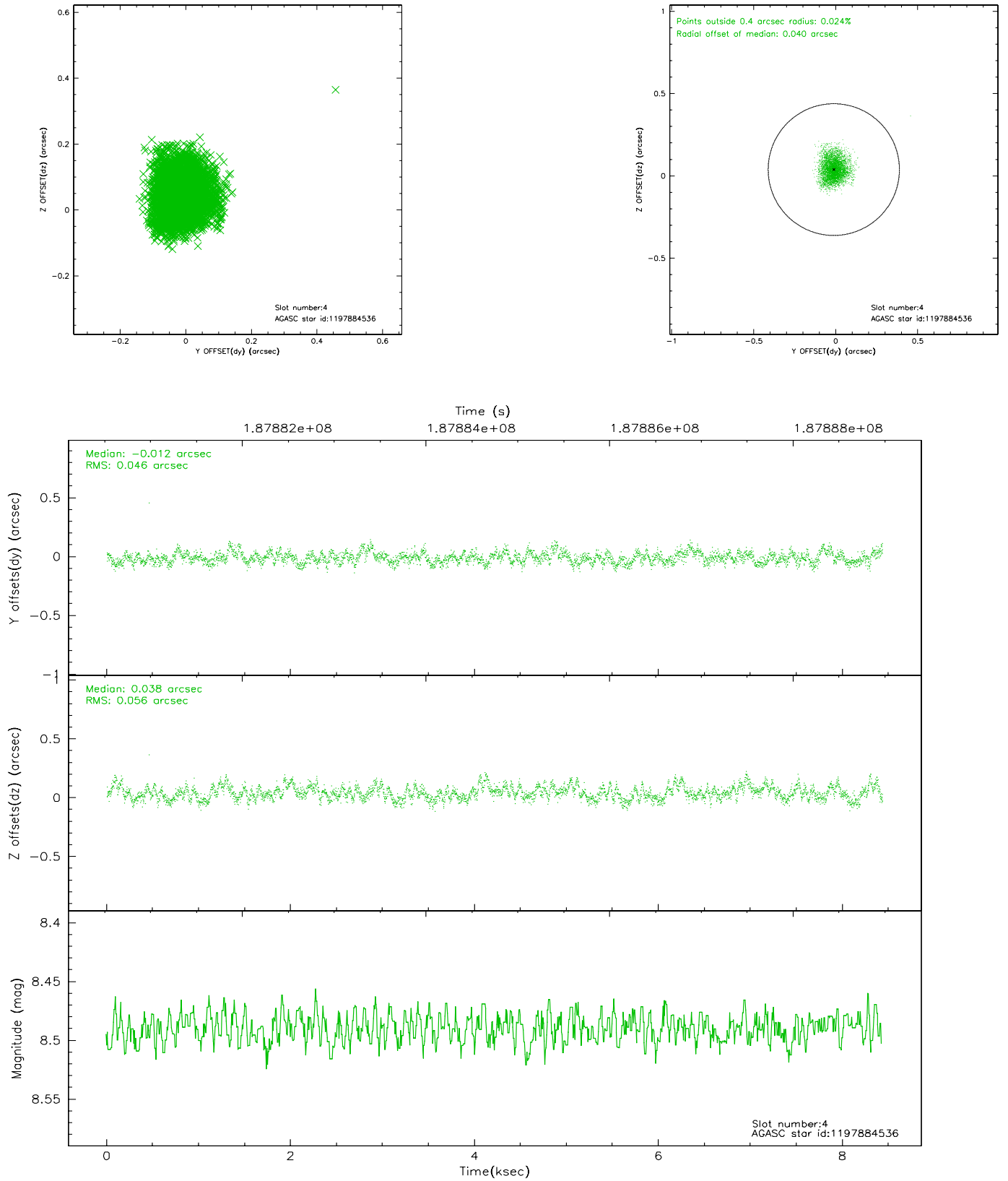
slot	status	id	mag	n_pts	med_dy	med_dz	dr1	dr2	ra	dec	mean_y	mean_z
0	FID	ACIS-S-2	7.10	2057	-0.047	0.007	0.006	0.011	0.000000	0.000000	-759.22	-1731.45
1	FID	ACIS-S-4	7.20	2057	0.029	0.021	0.005	0.008	0.000000	0.000000	2153.81	176.41
2	FID	ACIS-S-5	7.23	2057	-0.013	-0.019	0.006	0.010	0.000000	0.000000	-1811.21	170.73
3	GUIDE	1197750936	7.56	4109	-0.083	-0.170	0.072	0.110	15.387940	-71.549550	-990.90	285.45
4	GUIDE	1197884536	8.49	4115	-0.012	0.038	0.077	0.124	17.160729	-71.835289	891.56	1523.38
5	GUIDE	1197884712	8.31	4109	0.105	0.094	0.064	0.099	16.087398	-72.252690	1602.39	-257.38
6	GUIDE	1197885104	9.37	4113	0.175	0.072	0.098	0.155	17.845067	-72.189368	2377.00	1526.74
7	GUIDE	1197750896	9.82	4112	-0.186	-0.035	0.105	0.173	12.910875	-71.532544	-2348.74	-2190.07

## 2.4 Star Slots

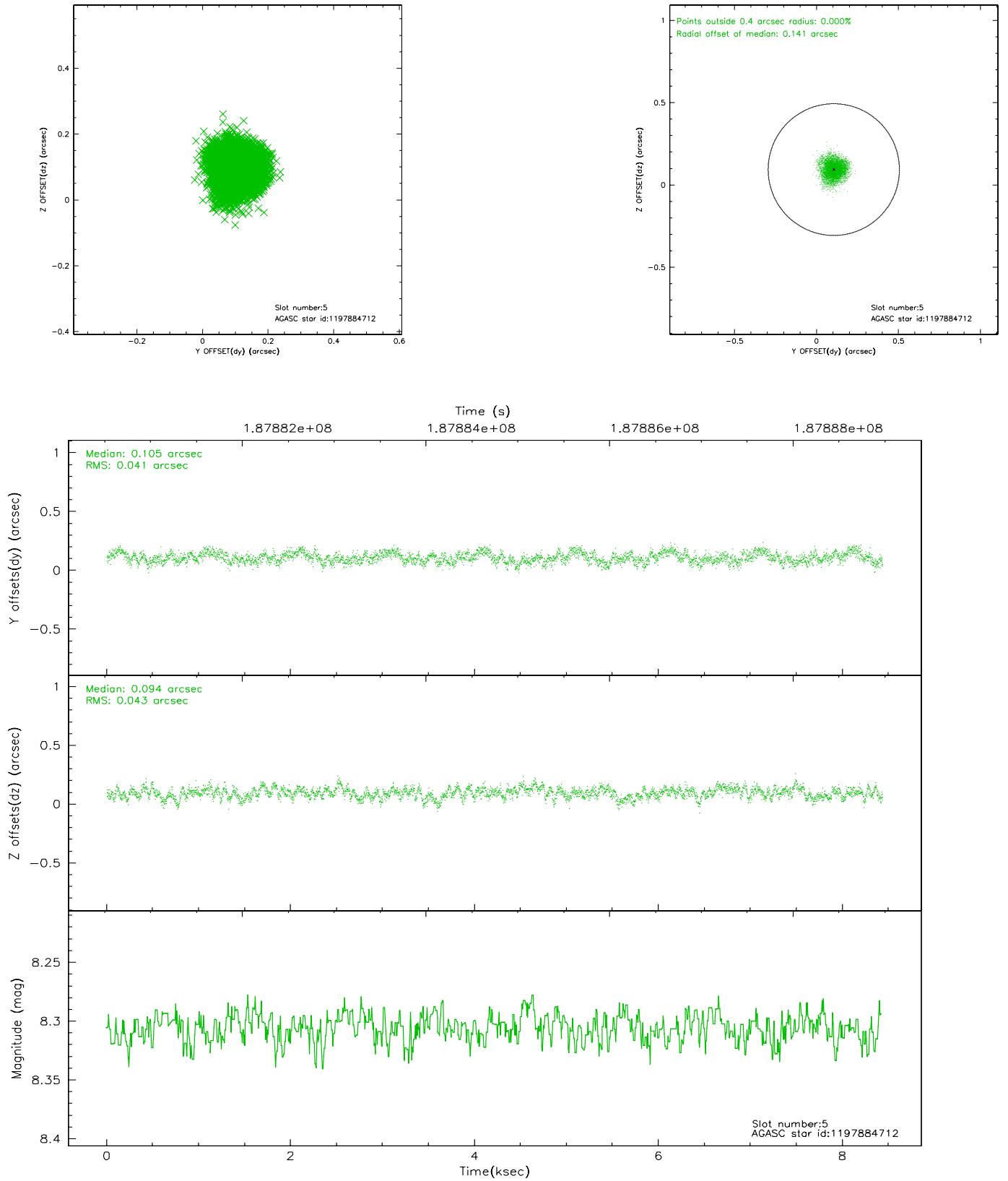
### 2.4.1 Slot 3



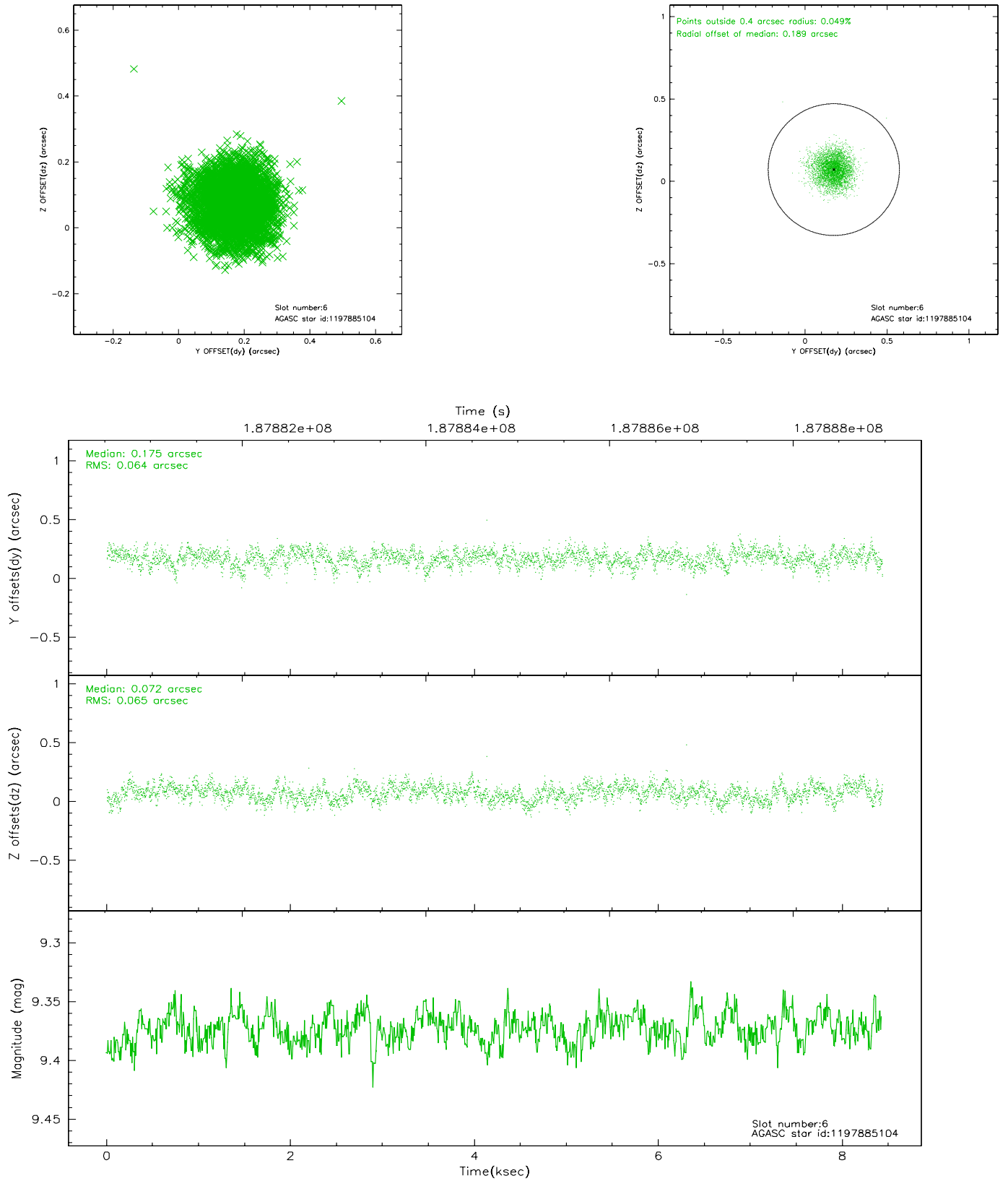
## 2.4.2 Slot 4



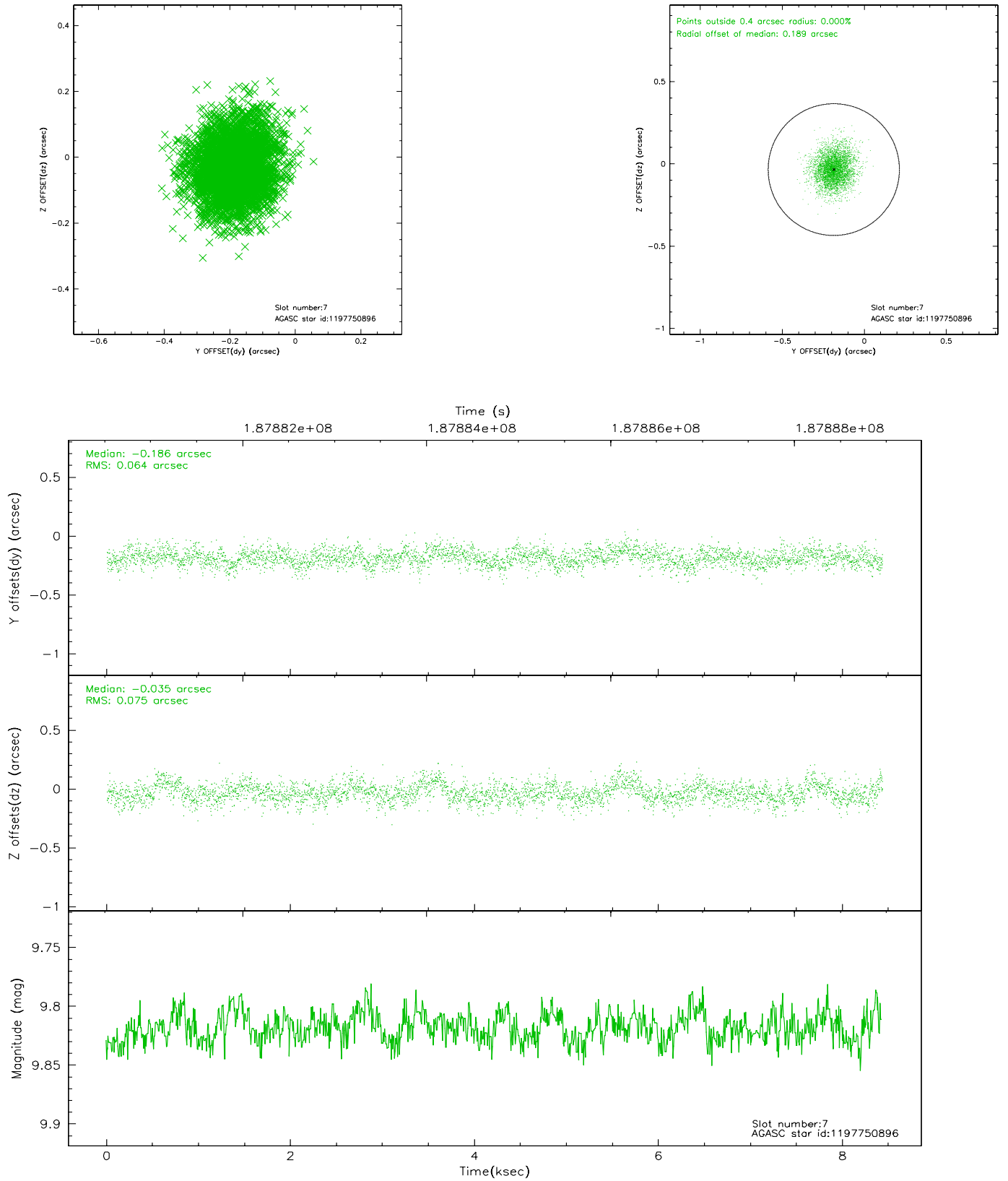
### 2.4.3 Slot 5



## 2.4.4 Slot 6

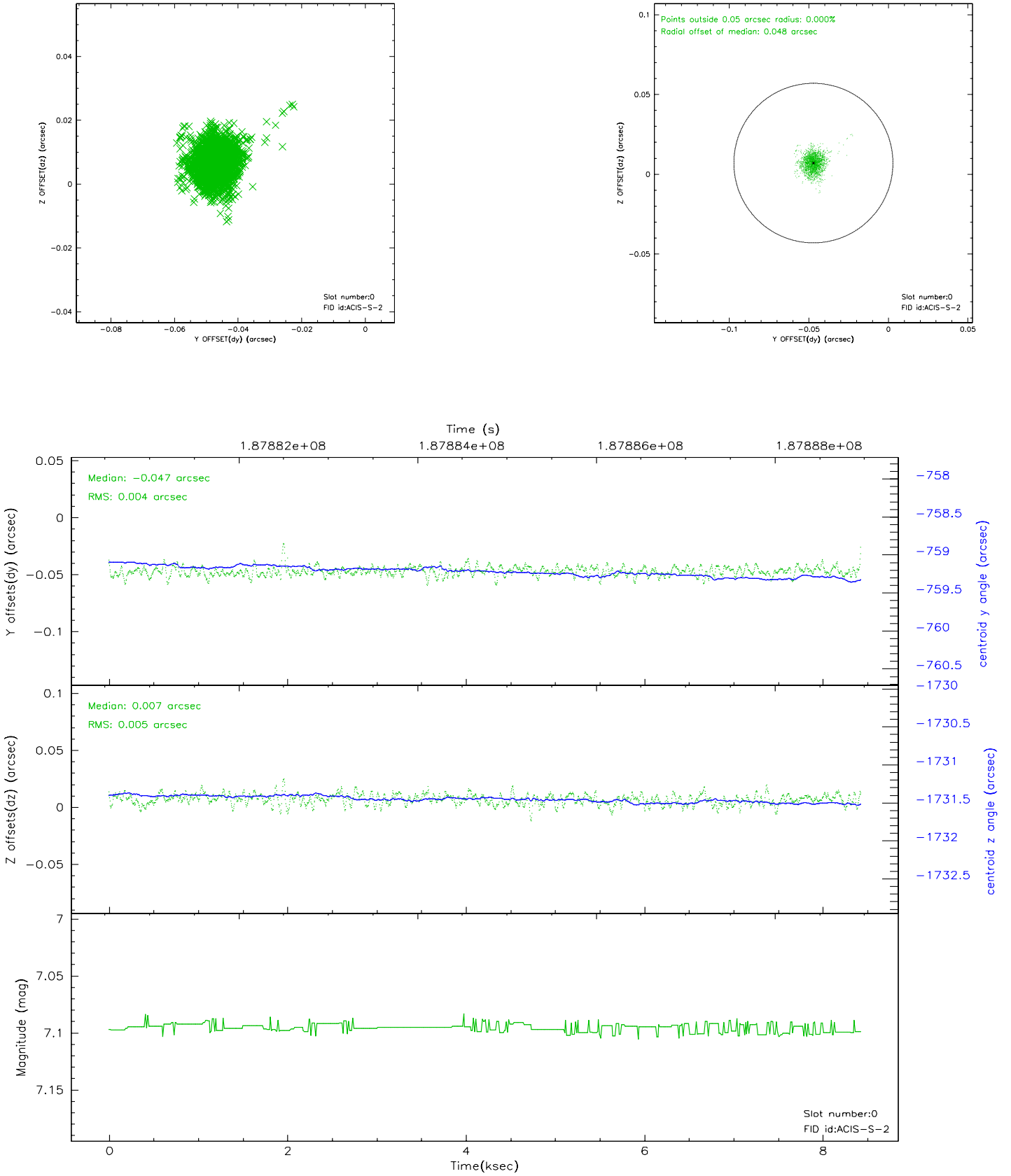


## 2.4.5 Slot 7

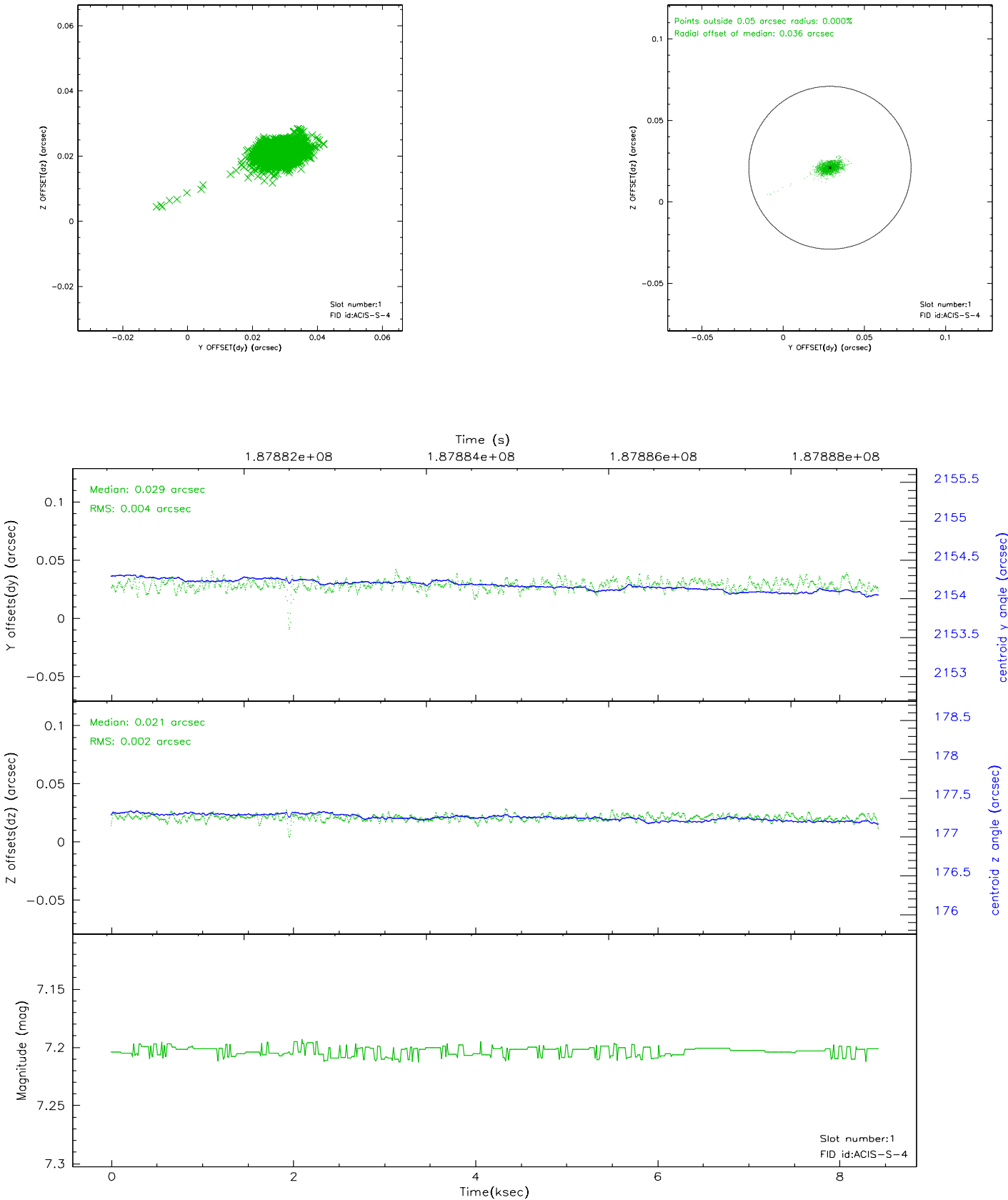


## 2.5 FID Slots

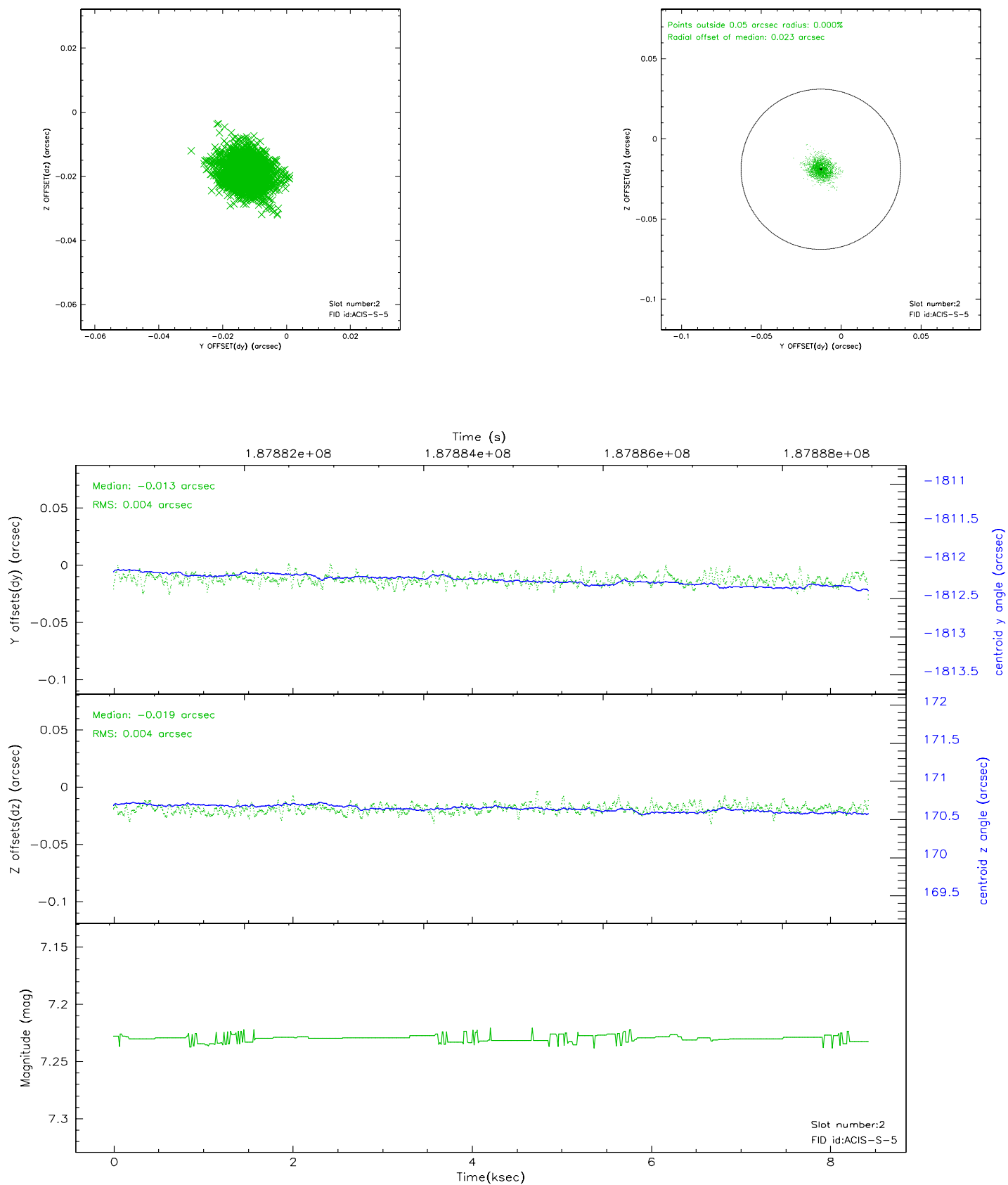
### 2.5.1 Slot 0



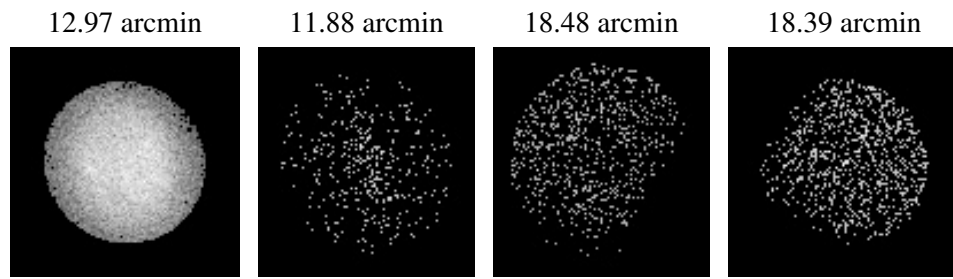
2.5.2 Slot 1



### 2.5.3 Slot 2



### 3 Point Sources



# A Summary

## A.1 Status

V&V Scientist	Jen Lauer
V&V Date (YYYY-MM-DD)	2006.06.23
V&V Edition	1
V&V Disposition and Status	OK
V&V Charge Time	8.012

## A.2 Comments

Window constraint met. Source is off-axis and extended.