

V&V Reference Report

L2 ASCDS Version : 7.6.7.1

Observation 4925 - L2 Version 001
Chandra X-Ray Center

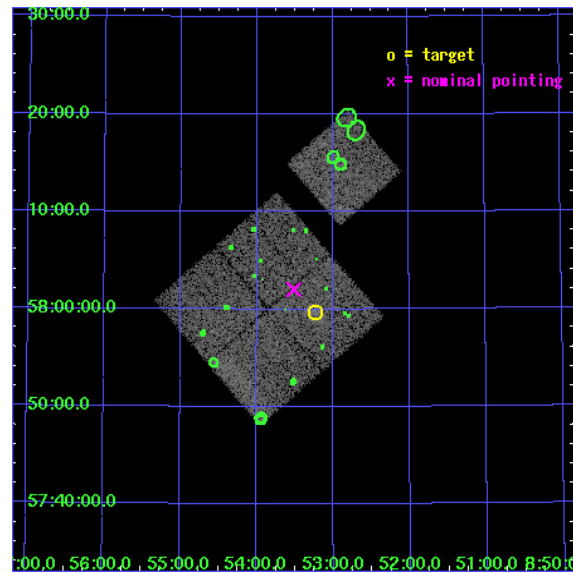
L2 Processing Date : Apr 17 2006

Contents

1	Front	2
2	OBI	3
2.1	OBI	3
2.1.1	Images	3
2.1.2	Bias	3
2.1.3	Parameters	4
2.1.4	Events	4
2.2	Compared Parameters	5
2.3	Aspect	6
2.4	Star Slots	9
2.4.1	Slot 3	9
2.4.2	Slot 4	10
2.4.3	Slot 5	11
2.4.4	Slot 6	12
2.4.5	Slot 7	13
2.5	FID Slots	14
2.5.1	Slot 0	14
2.5.2	Slot 1	15
2.5.3	Slot 2	16
3	Point Sources	17
A	Summary	18
A.1	Status	18
A.2	Comments	18

1 Front

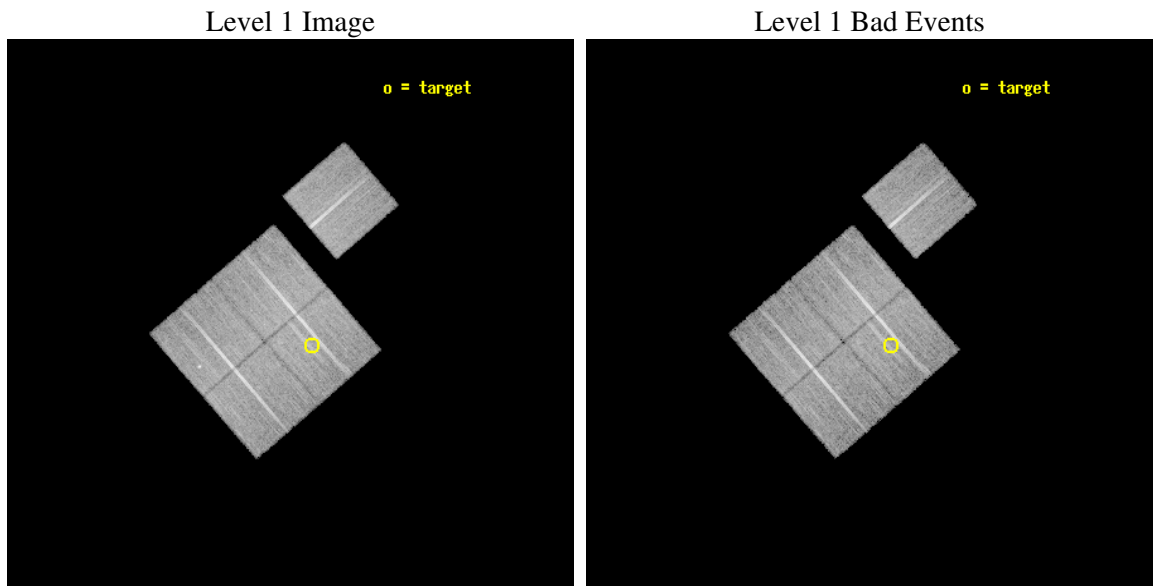
seq_num	800376
obs_id	4925
title	Chandra snapshot survey of 10 distant clusters of galaxies
observer	Dr. Stephen Murray
object	CL0853+5759
dtcycle	0
cycle	P
ra_targ	133.30875
dec_targ	57.994167
ra_nom	133.3785862888
dec_nom	58.0338983059
roll_nom	49.128572548961
revision	2
ontime	18023.399965346
livetime	17787.910976165
ontime0	18023.399965346
ontime1	18020.258975208
ontime2	18020.258975208
ontime3	18023.399965346
ontime6	18020.2590051
l2events	48365



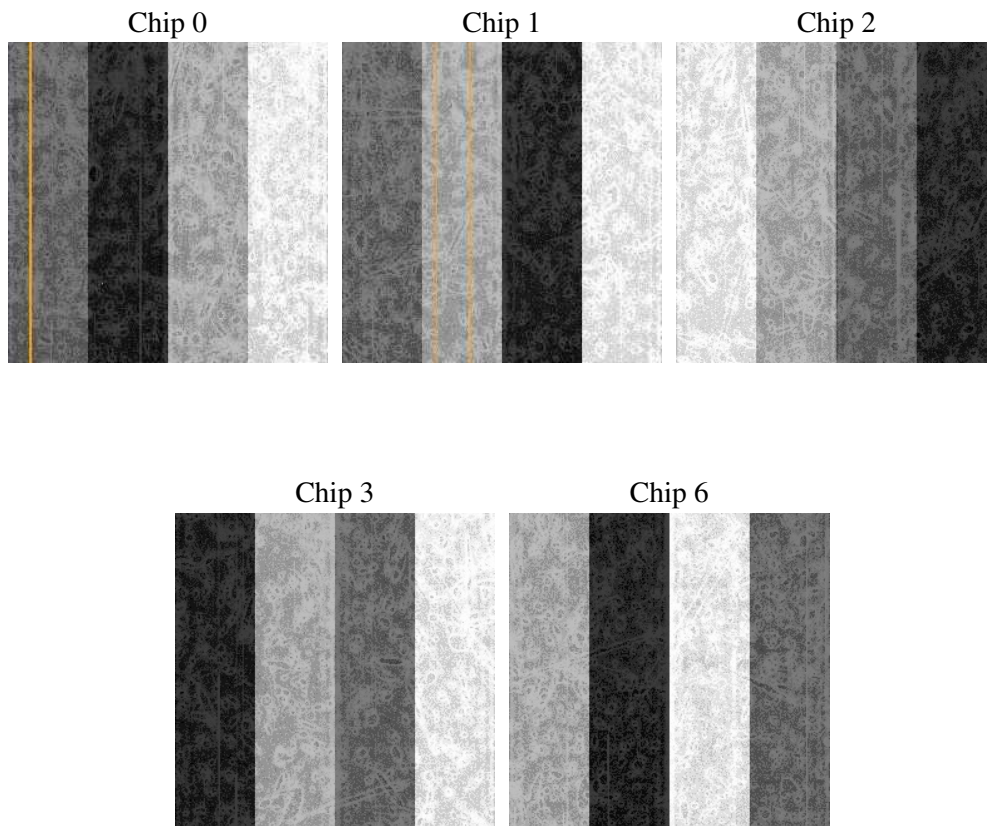
2 OBI

2.1 OBI

2.1.1 Images



2.1.2 Bias



2.1.3 Parameters

obi_num	3
ascdsver	7.6.7.1
caldbver	3.2.1
date	2006-04-17T17:27:42
revision	2

sched_exp_time	17974.283000
ontime	18029.352025807
ontime0	18029.352025807
ontime1	18026.211035669
ontime2	18026.211035669
ontime3	18029.352025807
ontime6	18026.211065561
l1events	522946

2.1.4 Events

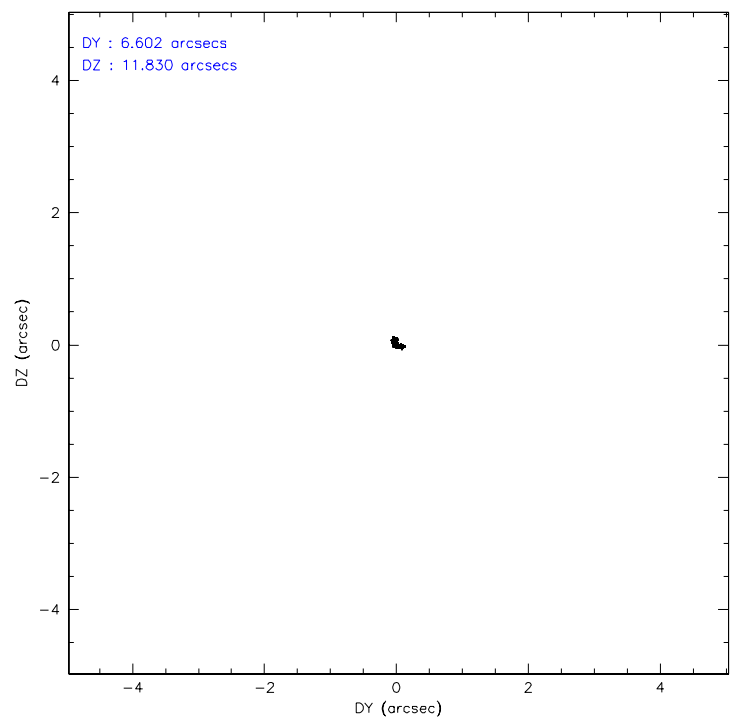
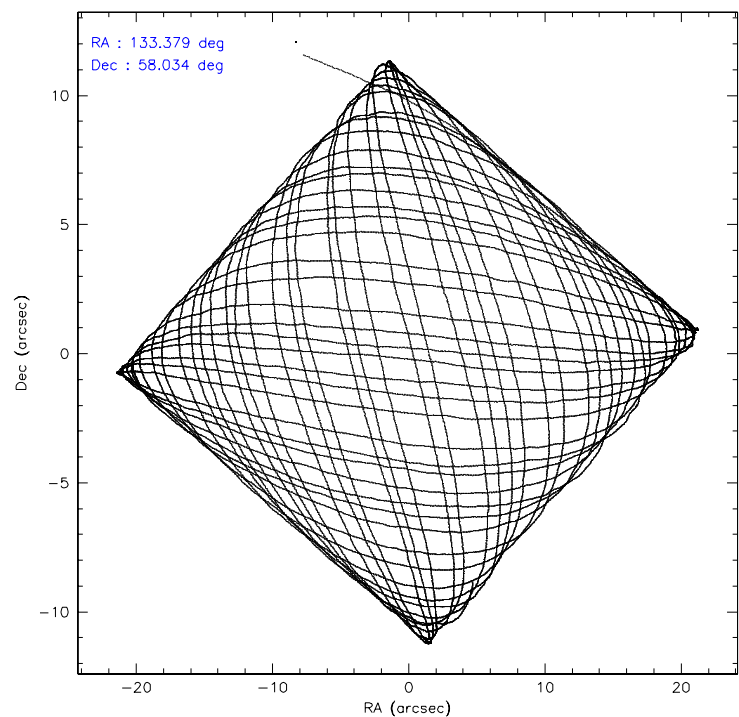
	ccd 0	ccd 1	ccd 2	ccd 3	ccd 6
level 1 events	101346	99397	111154	106954	104095
rejected events	89917	86926	100000	95825	92622
rejected %	88%	87%	89%	89%	88%

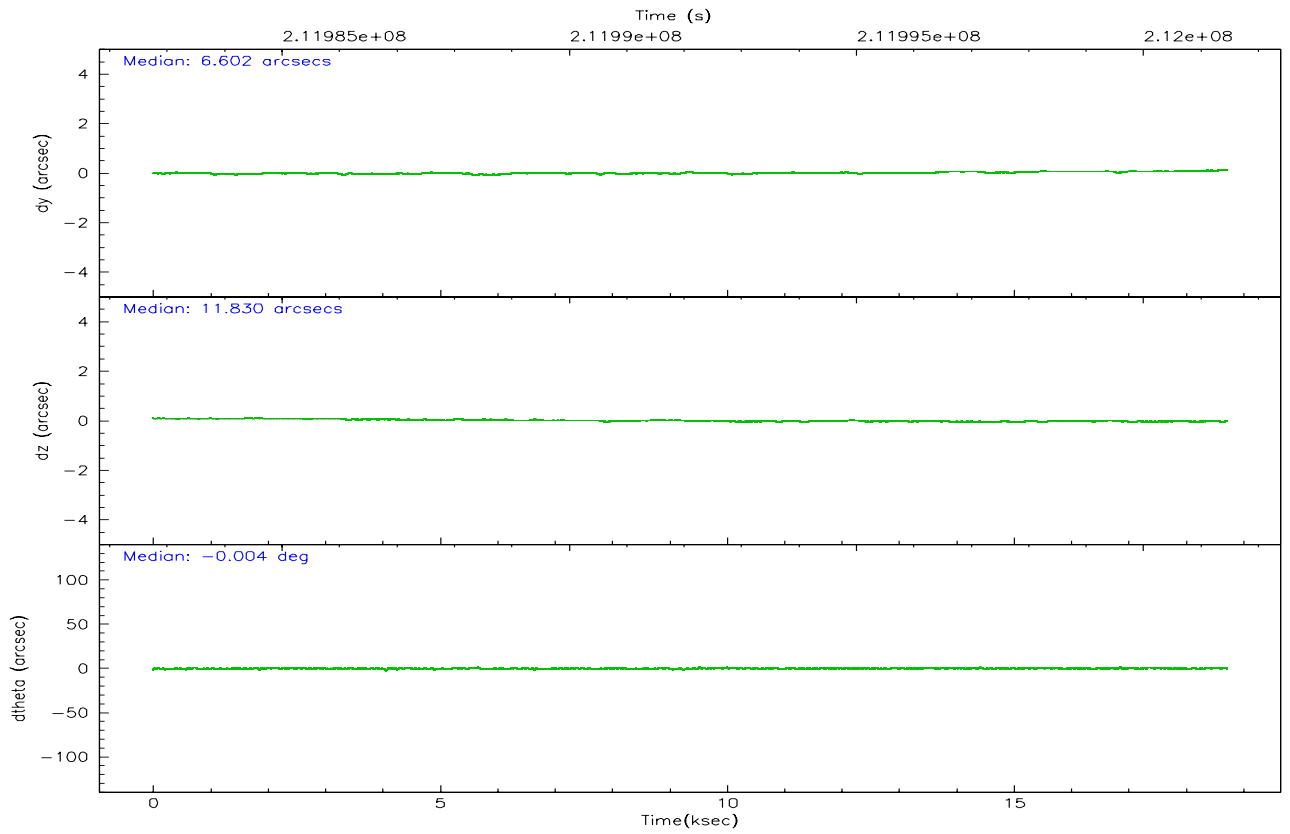
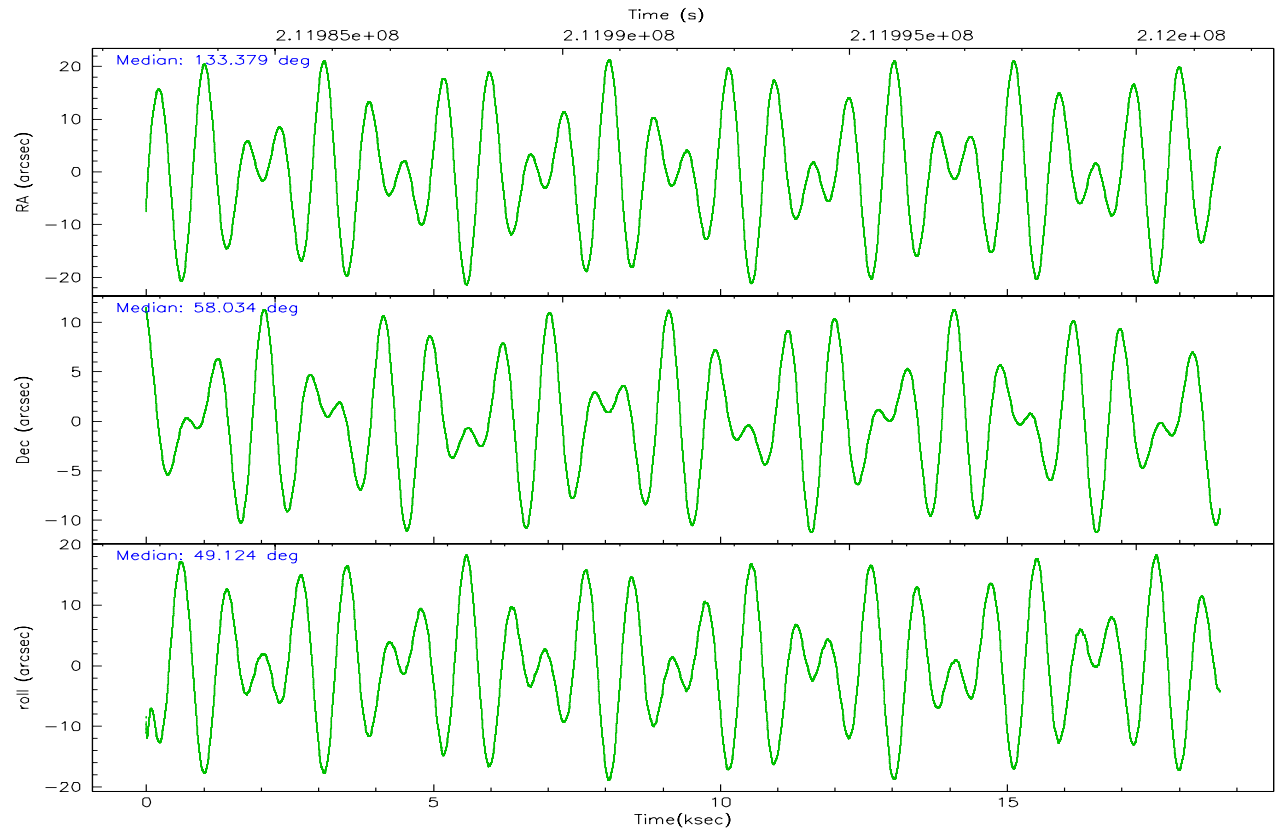
	ccd 0	ccd 1	ccd 2	ccd 3	ccd 6
grade 0 events	4392	4801	4297	4475	4422
	4%	4%	3%	4%	4%
grade 1 events	48	52	65	57	41
	0%	0%	0%	0%	0%
grade 2 events	2606	2632	2489	2239	2311
	2%	2%	2%	2%	2%
grade 3 events	1248	1354	1183	1214	1263
	1%	1%	1%	1%	1%
grade 4 events	1154	1305	1199	1181	1167
	1%	1%	1%	1%	1%
grade 5 events	3725	3983	3461	4185	4165
	3%	4%	3%	3%	4%
grade 6 events	2035	2388	1991	2026	2315
	2%	2%	1%	1%	2%
grade 7 events	86138	82882	96469	91577	88411
	84%	83%	86%	85%	84%

2.2 Compared Parameters

Parameter	Planned	Actual	Parameter	Planned	Actual
Instrument	ACIS	ACIS	Obspar format version number	6	6
Detector	ACIS-01236	ACIS-01236	Obspar file type	PREDICTED	ACTUAL
Grating	NONE	NONE	Obspar update status	NONE	UPDATED
Data mode	VFAINT	VFAINT	On-chip summing requested	N	N
Observation mode	POINTING	POINTING	Subarray requested	NONE	NONE
Pointing RA	133.369063	133.3785862888013	Alternating exposures requested	N	N
Pointing Dec	58.007017	58.03389830590035	Primary exposure time	0.000000	3.1
Pointing Roll	48.927974	49.12857254896078			
SIM focus pos (mm)	-0.782348	-0.7809083437167272			
SIM defocus (mm)	0	0.001439871863259334			
SIM translation stage pos (mm)	-225.840463	-225.8458576473255			
SIM translation stage offset (mm)	-7.752	-7.746595355604228			
Observation start time	211983488.184000	211982279.96086			
Observation start date	2004-09-19T12:17:04	2004-09-19T11:57:59			
Observation end time	212001462.184000	212001688.33673			
Observation end date	2004-09-19T17:16:38	2004-09-19T17:21:28			
Read mode	TIMED	TIMED			

2.3 Aspect



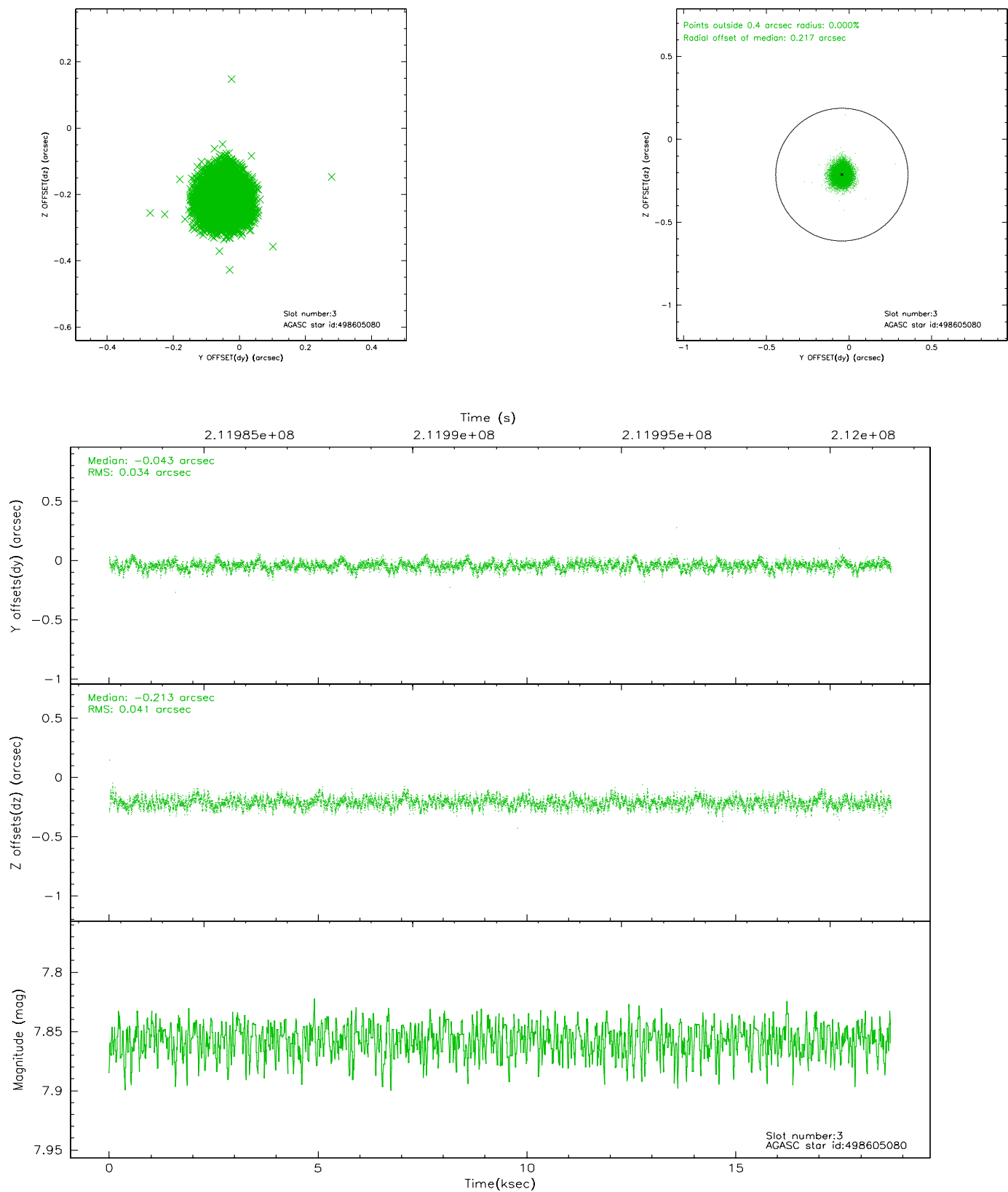


Slot Statistics

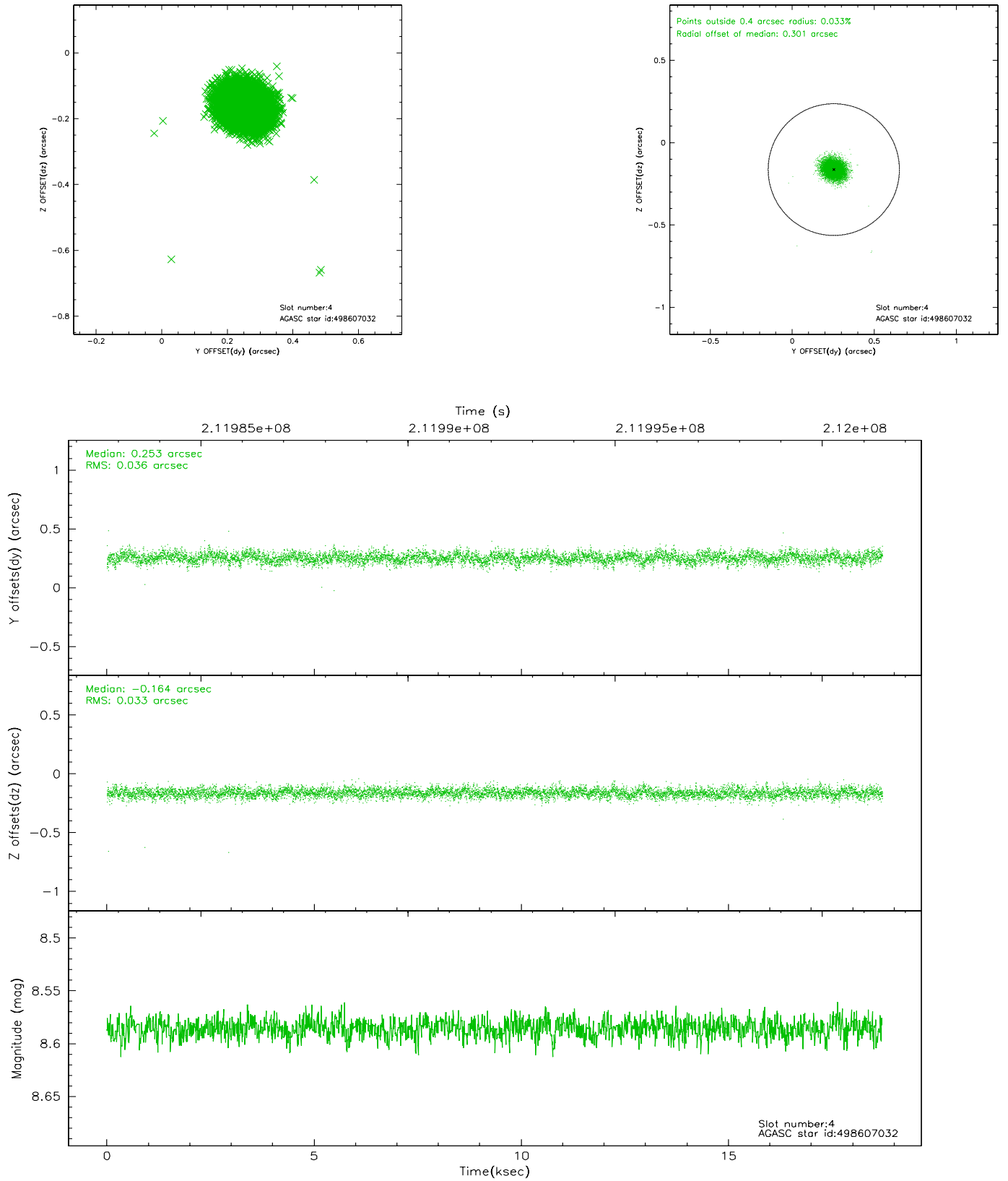
slot	status	id	mag	n_pts	med_dy	med_dz	dr1	dr2	ra	dec	mean_y	mean_z
0	FID	ACIS-I-1	7.23	4566	0.077	-0.182	0.008	0.013	0.000000	0.000000	933.04	-994.55
1	FID	ACIS-I-4	7.14	4565	-0.052	0.113	0.007	0.011	0.000000	0.000000	2152.58	906.41
2	FID	ACIS-I-5	7.22	4566	-0.124	0.140	0.006	0.010	0.000000	0.000000	-1814.94	903.46
3	GUIDE	498605080	7.86	9132	-0.043	-0.213	0.057	0.090	132.876712	58.368027	371.72	1556.88
4	GUIDE	498607032	8.59	9131	0.253	-0.164	0.051	0.084	132.440614	57.644577	-2149.15	499.28
5	GUIDE	499133280	8.20	9128	0.007	0.168	0.076	0.117	133.516909	57.280858	-1781.34	-1934.03
6	GUIDE	499519688	7.29	9132	-0.164	0.267	0.076	0.115	134.354711	58.218797	1812.88	-898.61
7	GUIDE	499522008	8.69	9124	-0.050	-0.062	0.085	0.143	135.052818	58.103026	2395.48	-2160.92

2.4 Star Slots

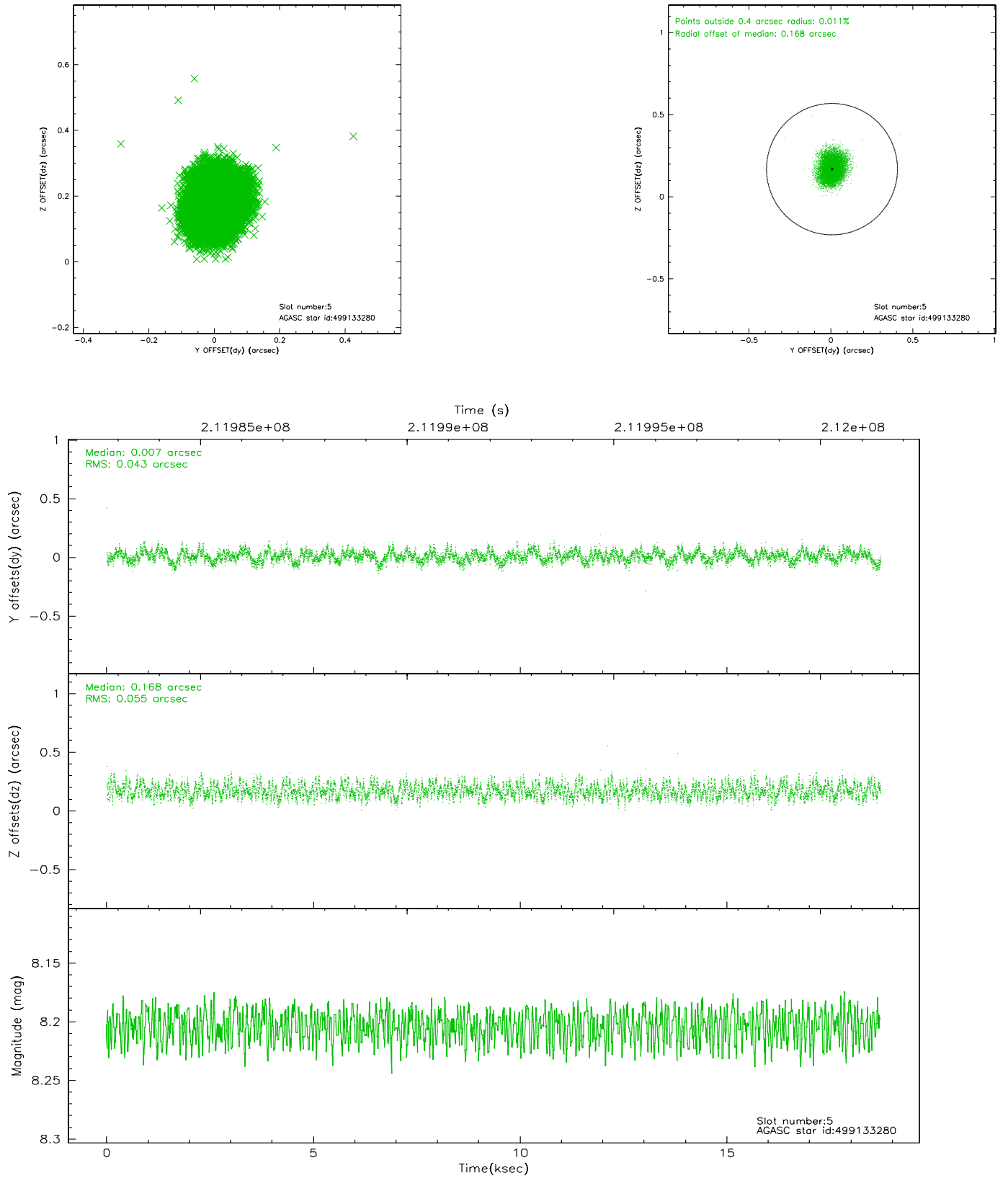
2.4.1 Slot 3



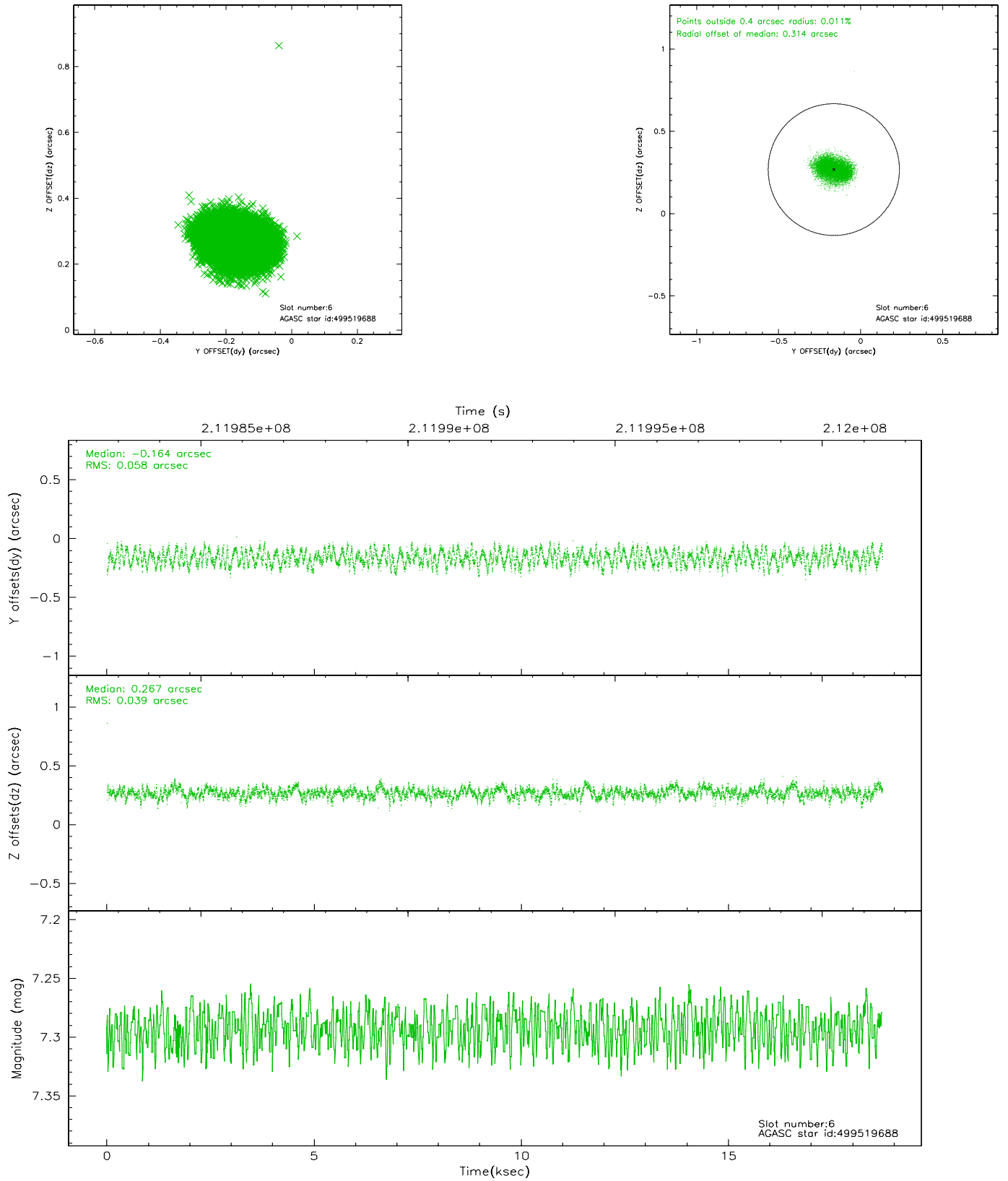
2.4.2 Slot 4



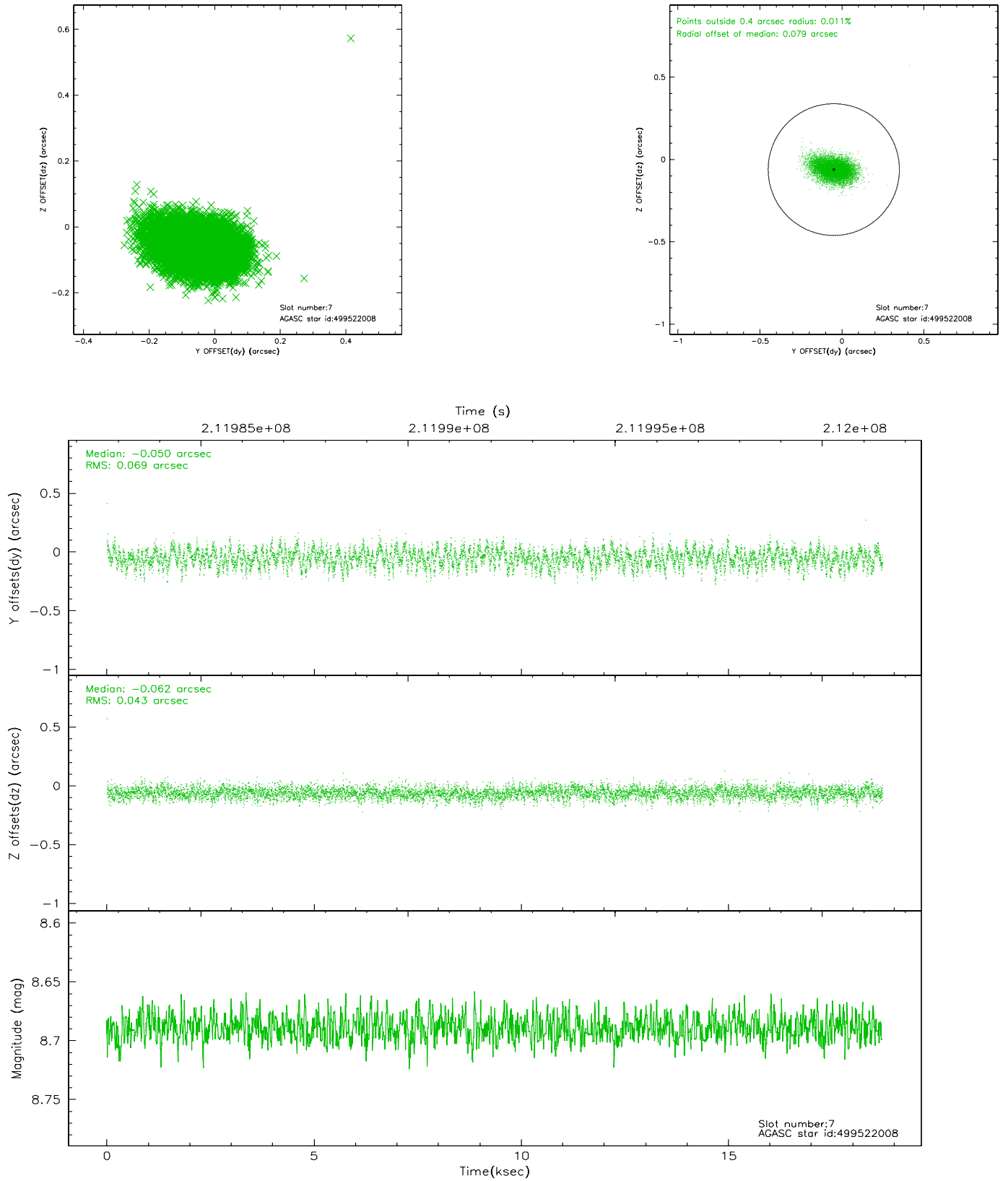
2.4.3 Slot 5



2.4.4 Slot 6

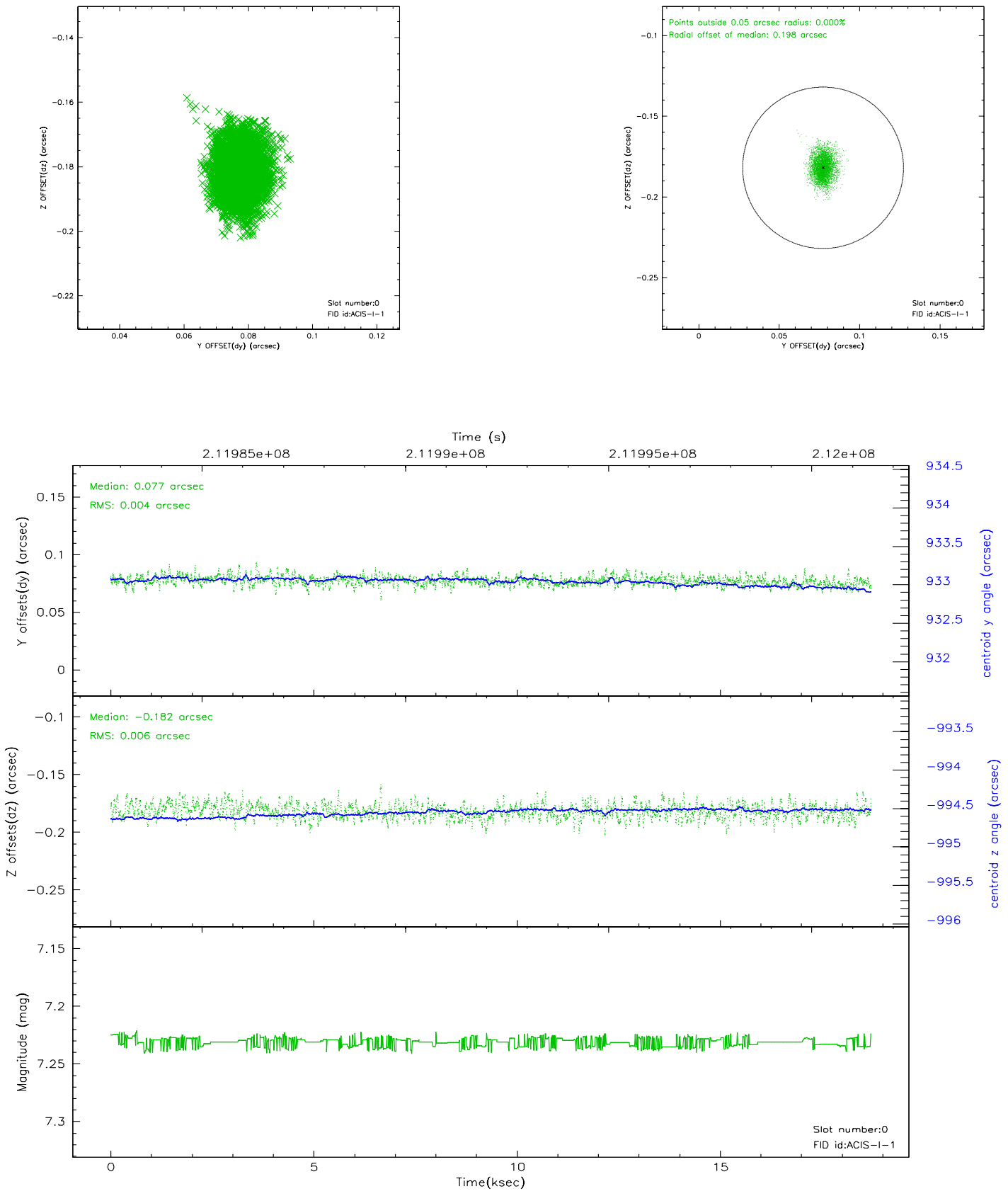


2.4.5 Slot 7

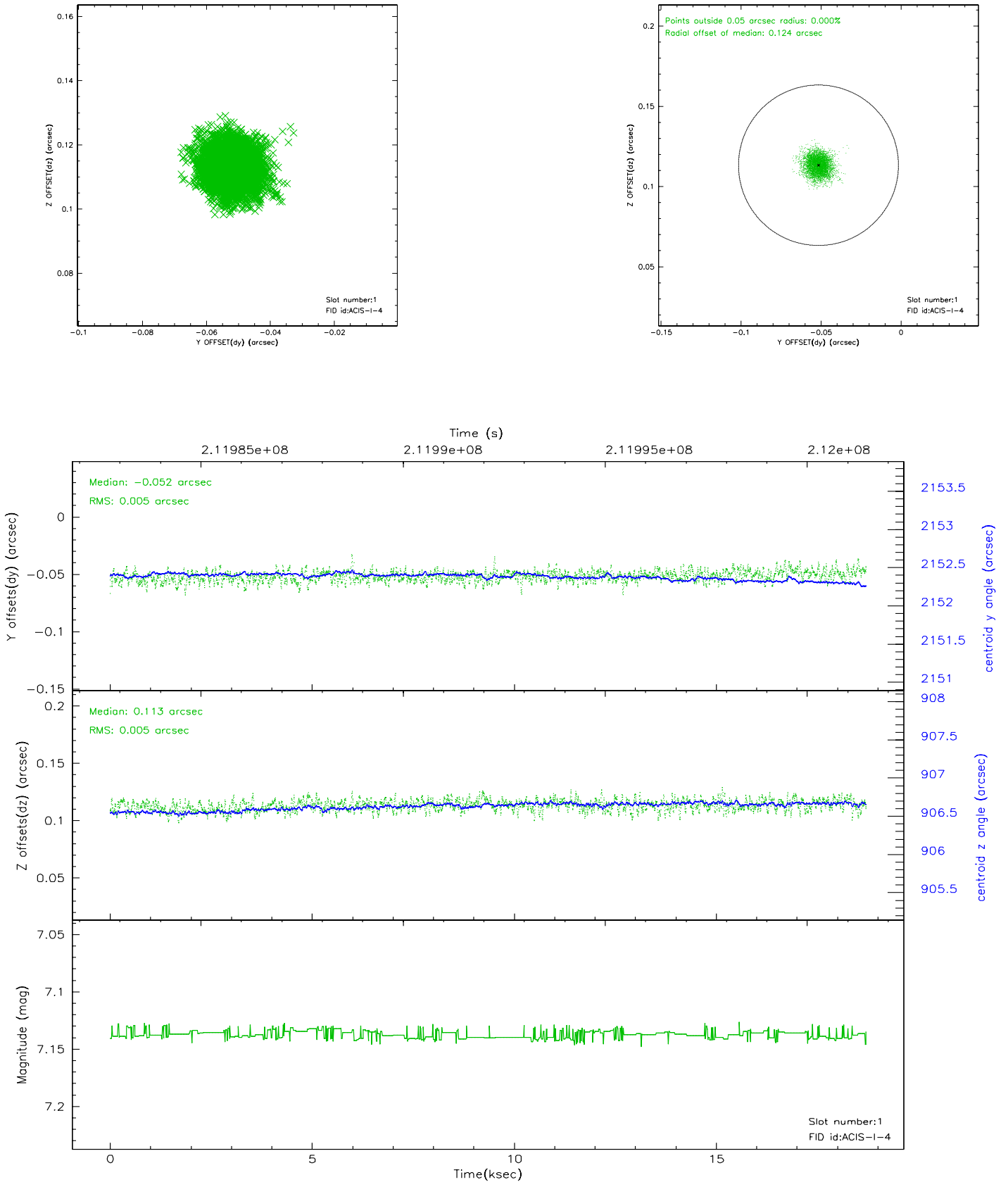


2.5 FID Slots

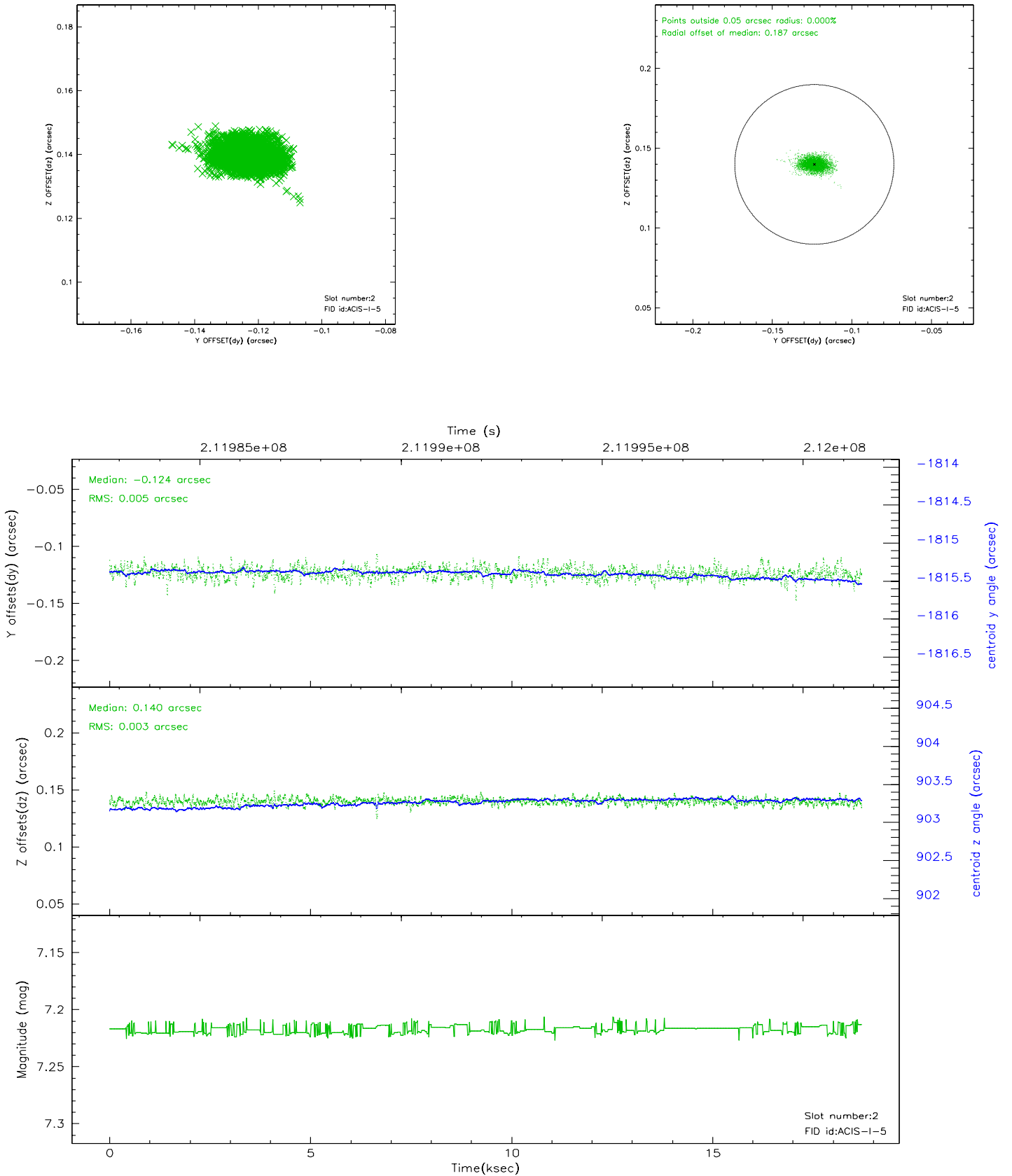
2.5.1 Slot 0



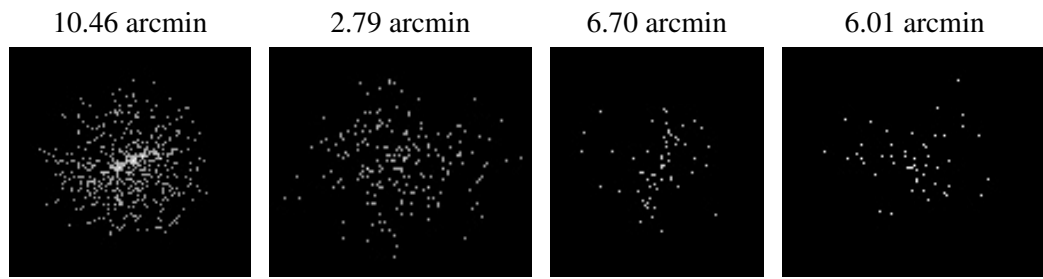
2.5.2 Slot 1



2.5.3 Slot 2



3 Point Sources



A Summary

A.1 Status

V&V Scientist	Beth Sundheim
V&V Date (YYYY-MM-DD)	2006.04.17
V&V Edition	1
V&V Disposition and Status	OK
V&V Charge Time	18.02

A.2 Comments