

V&V Reference Report

L2 ASCDS Version : 7.6.7.2

Observation 4845 - L2 Version 001
Chandra X-Ray Center

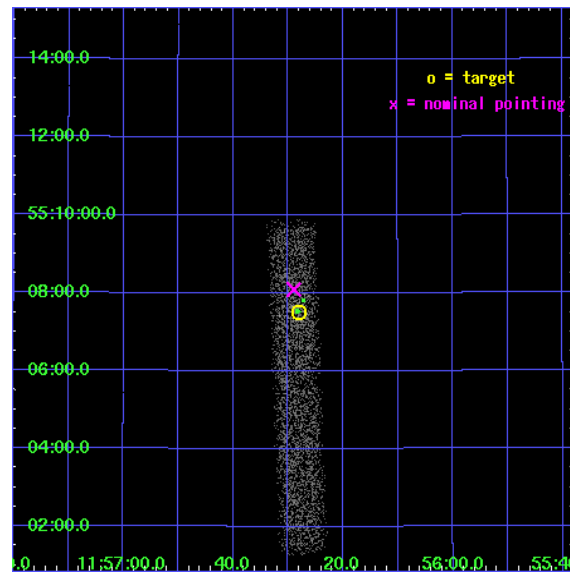
L2 Processing Date : Jun 8 2006

Contents

1	Front	2
2	OBI	3
2.1	OBI	3
2.1.1	Images	3
2.1.2	Bias	3
2.1.3	Parameters	4
2.1.4	Events	4
2.2	Compared Parameters	5
2.3	Aspect	6
2.4	Star Slots	9
2.4.1	Slot 3	9
2.4.2	Slot 4	10
2.4.3	Slot 5	11
2.4.4	Slot 6	12
2.4.5	Slot 7	13
2.5	FID Slots	14
2.5.1	Slot 0	14
2.5.2	Slot 1	15
2.5.3	Slot 2	16
3	Point Sources	17
A	Summary	18
A.1	Status	18
A.2	Comments	18

1 Front

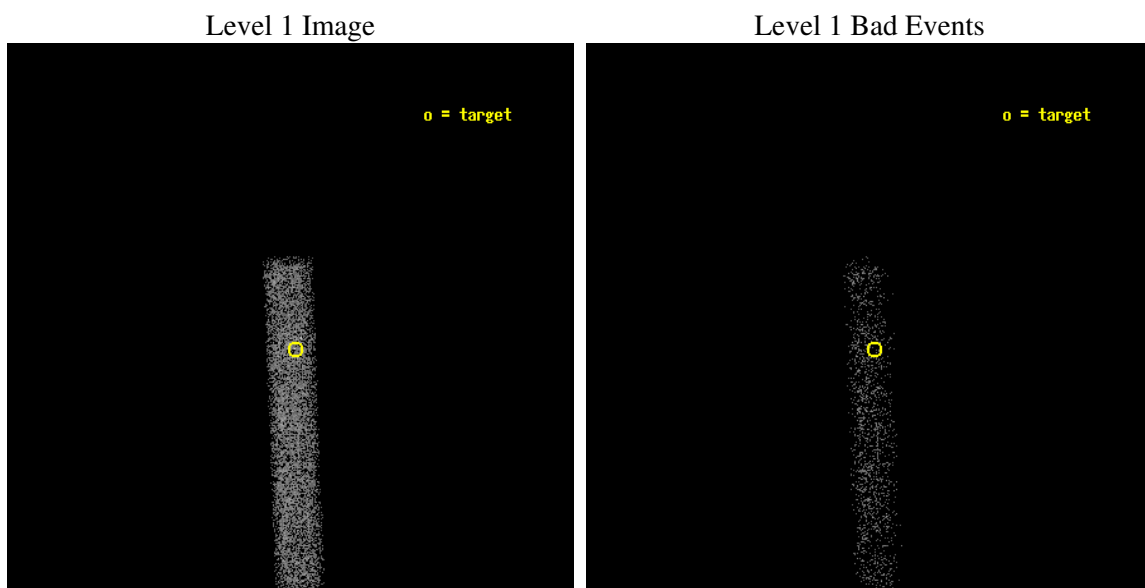
seq_num	700927
obs_id	4845
title	Are there any true Seyfert 2 nuclei?
observer	Prof RICHARD POGGE
object	NGC 3982
dtcycle	0
cycle	P
ra_targ	179.117083
dec_targ	55.125278
ra_nom	179.12074788679
dec_nom	55.134695051931
roll_nom	87.713982858818
revision	2
ontime	10148.800151229
livetime	9204.4260395691
ontime7	10148.800151229
l2events	4849



2 OBI

2.1 OBI

2.1.1 Images



2.1.2 Bias

Chip 7



2.1.3 Parameters

obi_num	0
ascdsver	7.6.7.2
caldbver	3.2.2
date	2006-06-08T17:08:08
revision	2

sched_exp_time	10000.000000
ontime	11386.200565249
ontime7	11386.200565249
l1events	12938

2.1.4 Events

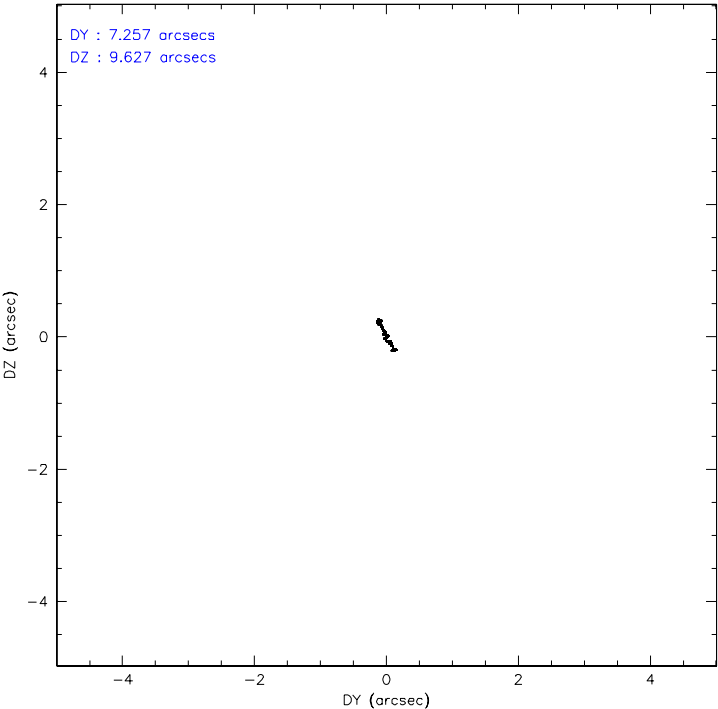
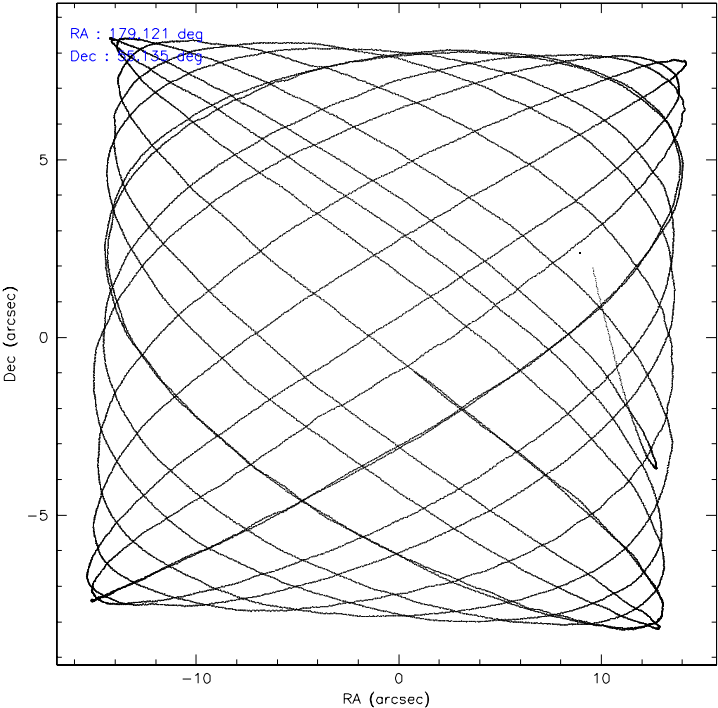
	ccd 7
level 1 events	12938
rejected events	7874
rejected %	60%

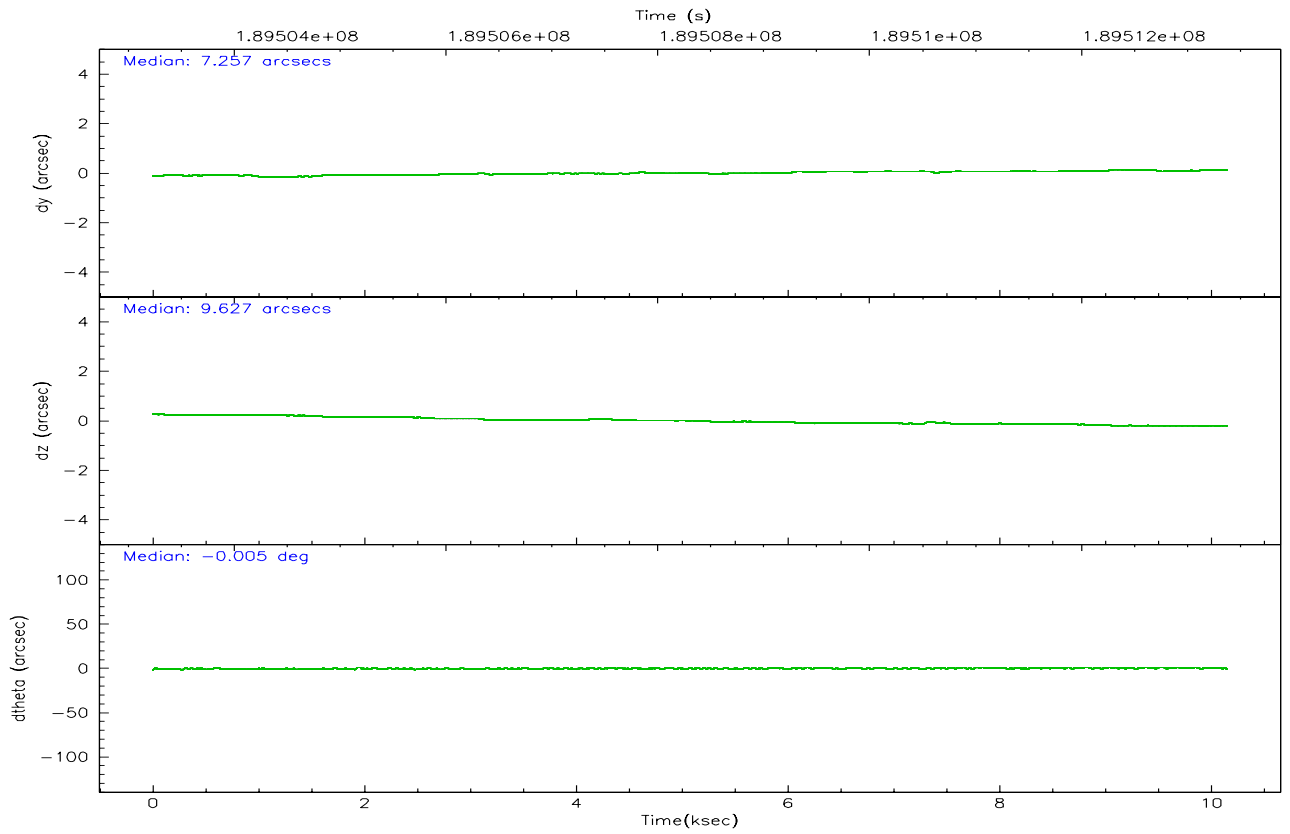
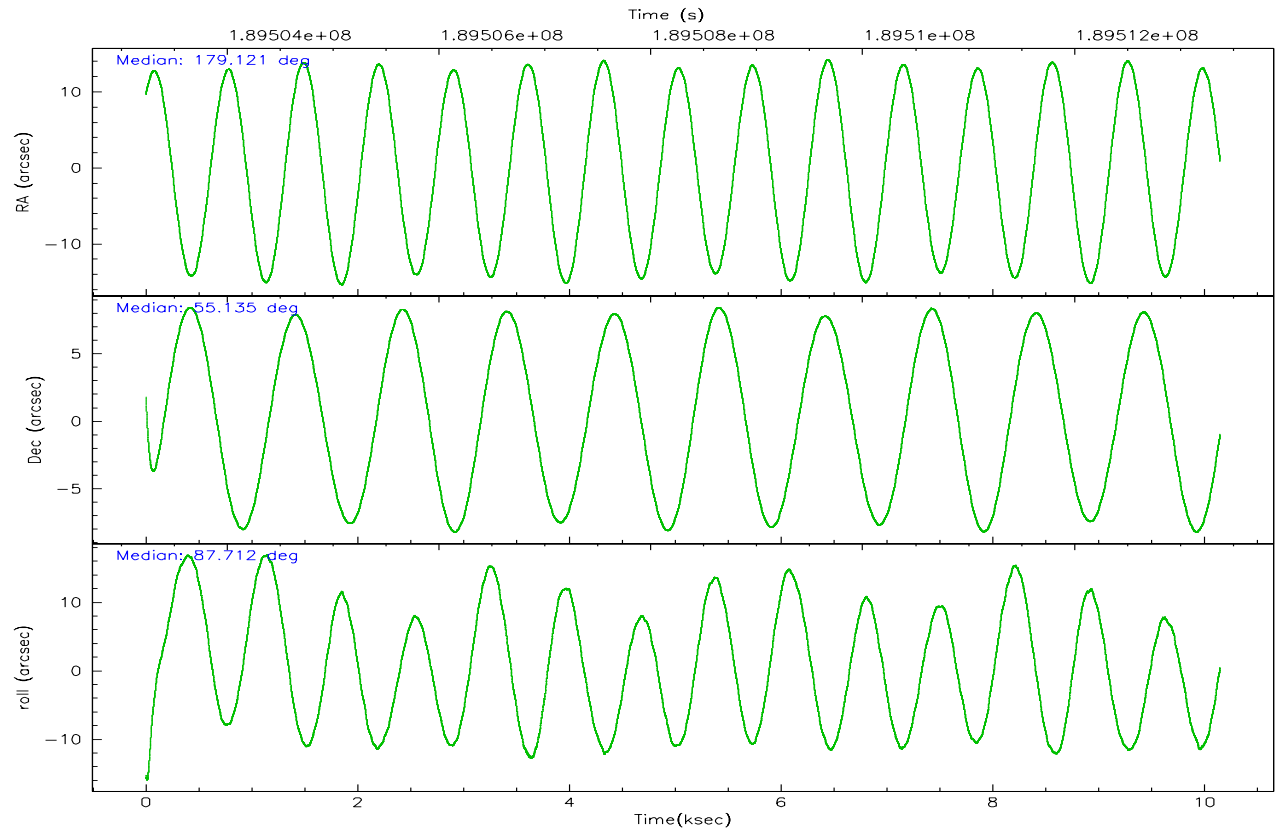
	ccd 7
grade 0 events	477
	3%
grade 1 events	7
	0%
grade 2 events	1286
	9%
grade 3 events	558
	4%
grade 4 events	564
	4%
grade 5 events	912
	7%
grade 6 events	2755
	21%
grade 7 events	6379
	49%

2.2 Compared Parameters

Parameter	Planned	Actual	Parameter	Planned	Actual
Instrument	ACIS	ACIS	Obspar format version number	6	6
Detector	ACIS-7	ACIS-7	Obspar file type	PREDICTED	ACTUAL
Grating	NONE	NONE	Obspar update status	NONE	UPDATED
Data mode	FAINT	FAINT	On-chip summing requested	N	N
Observation mode	POINTING	POINTING	Subarray requested	1/8	1/8
Pointing RA	179.143424	179.1207478867942	Subarray start row	0	449
Pointing Dec	55.110791	55.13469505193122	Subarray row count	1024	128
Pointing Roll	87.538772	87.71398285881784	Alternating exposures requested	N	N
SIM focus pos (mm)	-0.684267	-0.6828225247311905	Primary exposure time	0.000000	0.4
SIM defocus (mm)	0	0.001444936568705701			
SIM translation stage pos (mm)	-190.132523	-190.1425803651734			
SIM translation stage offset (mm)	0	0.01005778216563158			
Observation start time	189503384.184000	189501998.95663			
Observation start date	2004-01-03T07:48:40	2004-01-03T07:26:38			
Observation end time	189513384.184000	189513916.63215			
Observation end date	2004-01-03T10:35:20	2004-01-03T10:45:16			
Read mode	TIMED	TIMED			

2.3 Aspect



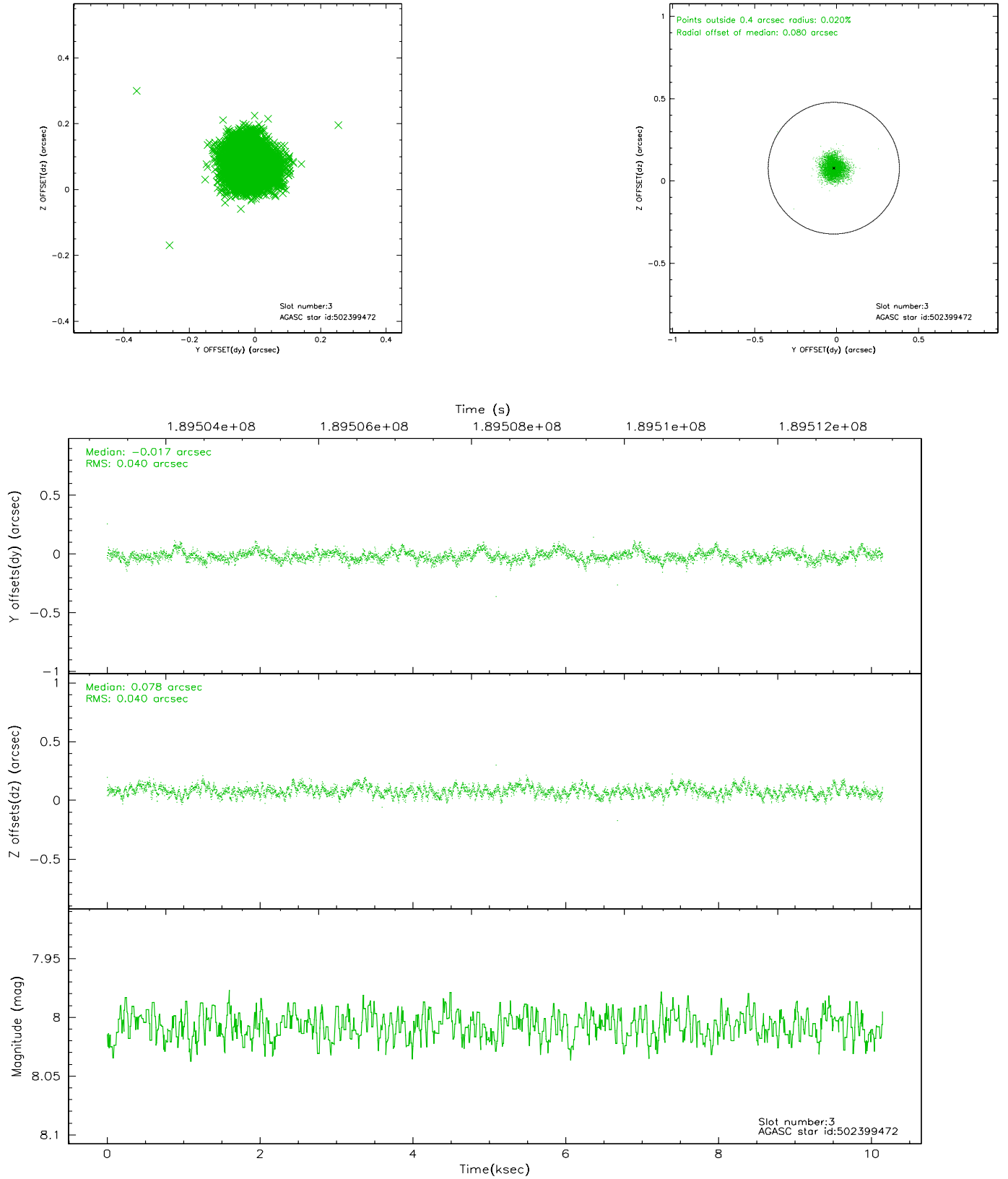


Slot Statistics

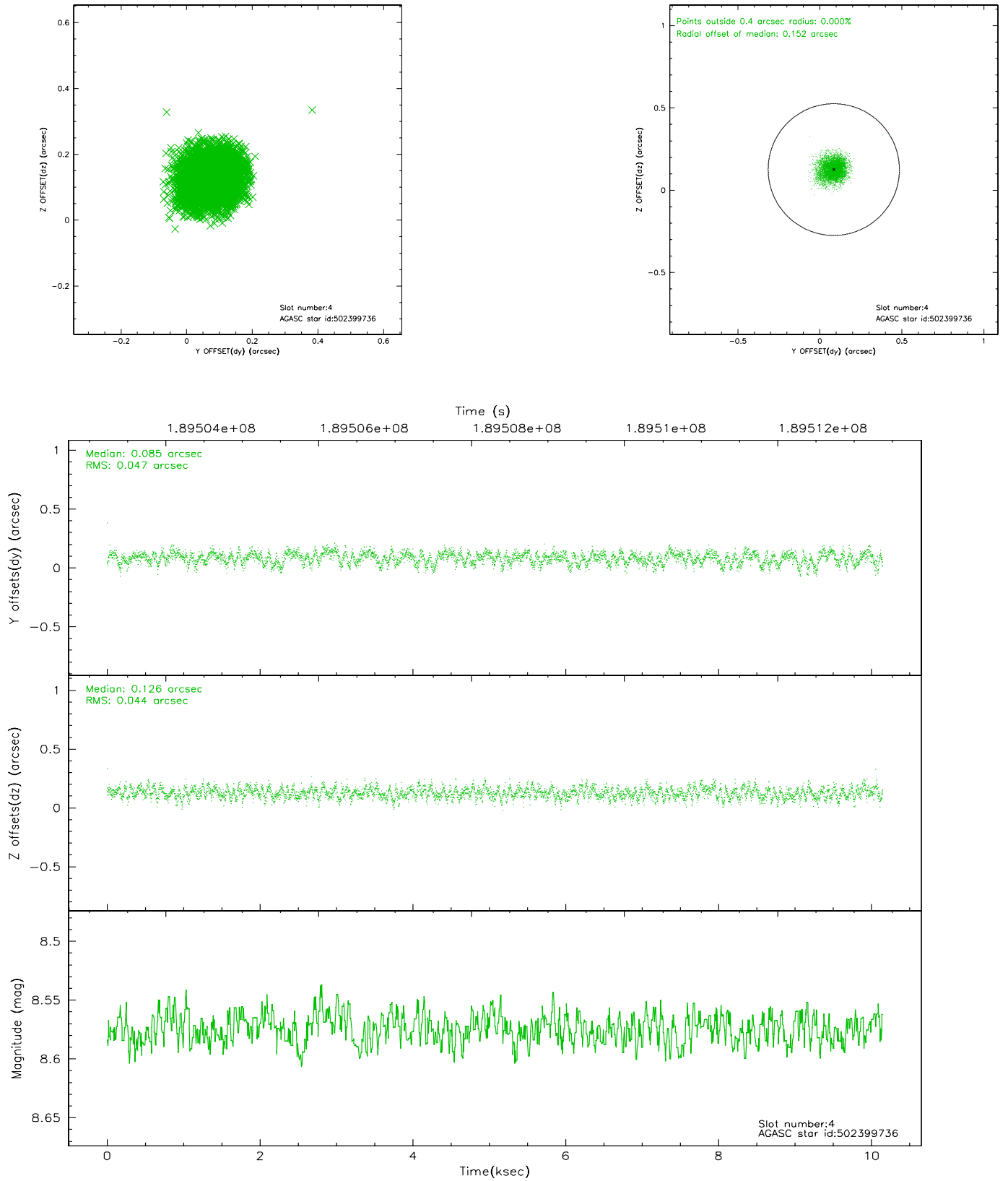
slot	status	id	mag	n_pts	med_dy	med_dz	dr1	dr2	ra	dec	mean_y	mean_z
0	FID	ACIS-S-2	7.10	2476	-0.020	0.002	0.009	0.014	0.000000	0.000000	-760.01	-1730.82
1	FID	ACIS-S-4	7.20	2476	0.016	0.009	0.005	0.010	0.000000	0.000000	2153.04	177.17
2	FID	ACIS-S-5	7.23	2476	-0.027	-0.003	0.009	0.016	0.000000	0.000000	-1812.22	171.36
3	GUIDE	502399472	8.01	4952	-0.017	0.078	0.060	0.096	179.672347	54.485646	-2196.57	-1201.42
4	GUIDE	502399736	8.57	4950	0.085	0.126	0.068	0.111	179.860915	54.569737	-1874.13	-1579.42
5	GUIDE	502400568	8.68	4950	0.031	-0.068	0.065	0.107	178.868651	54.779372	-1215.49	518.63
6	GUIDE	502793960	9.57	4945	-0.011	0.095	0.084	0.137	179.393376	55.531414	1535.64	-443.27
7	GUIDE	502793208	9.16	4946	-0.092	-0.234	0.107	0.162	177.980338	55.276529	513.94	2409.09

2.4 Star Slots

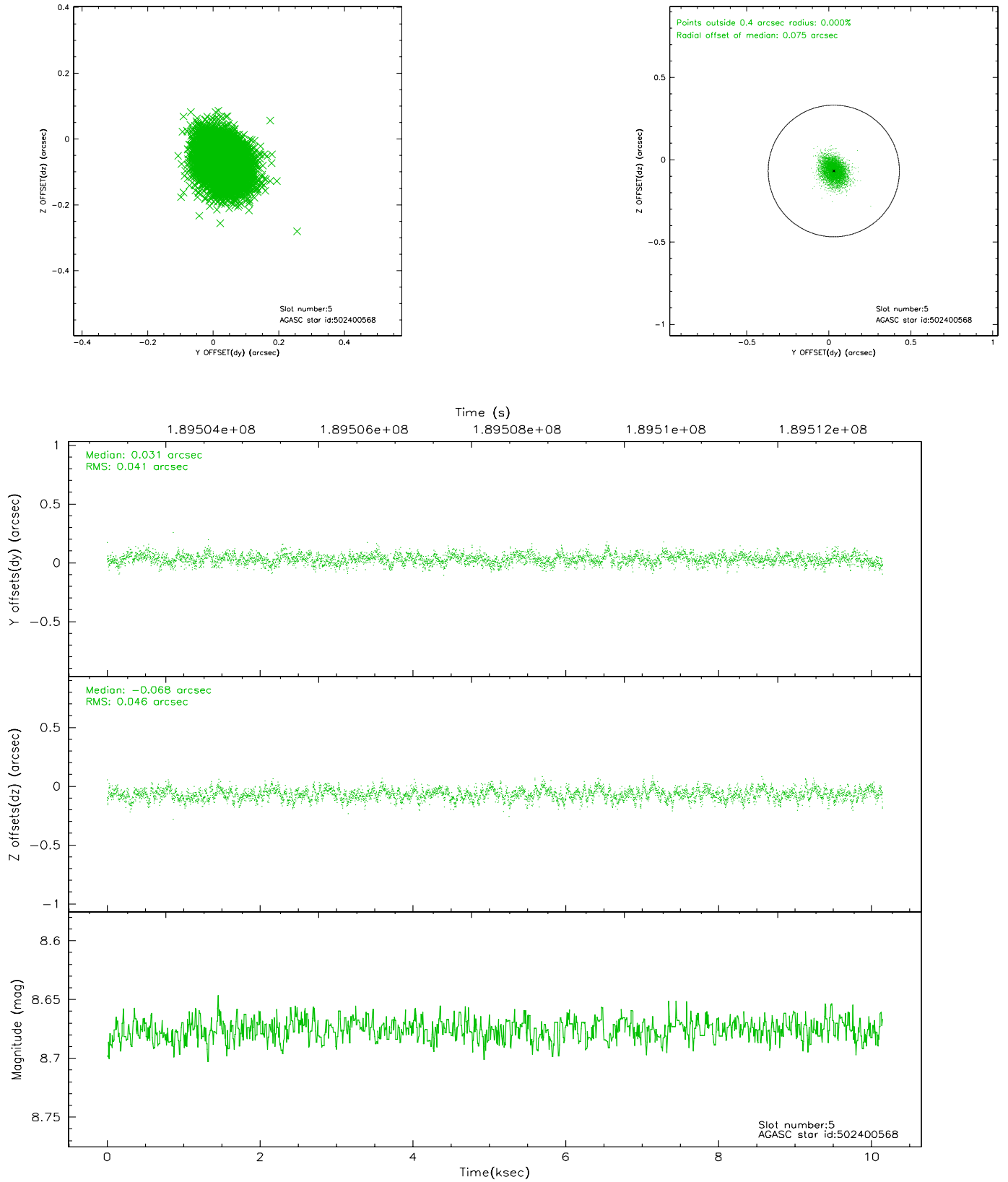
2.4.1 Slot 3



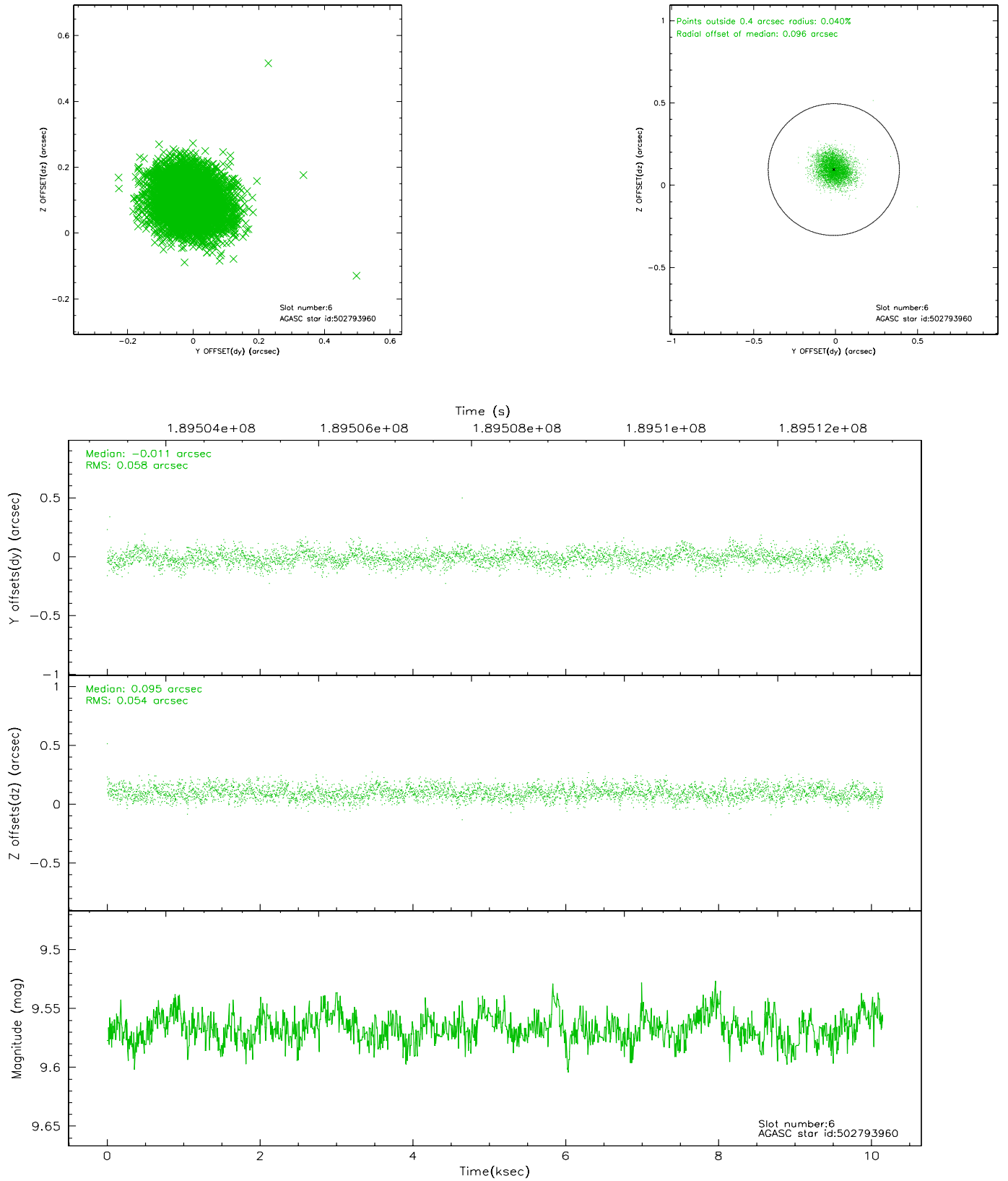
2.4.2 Slot 4



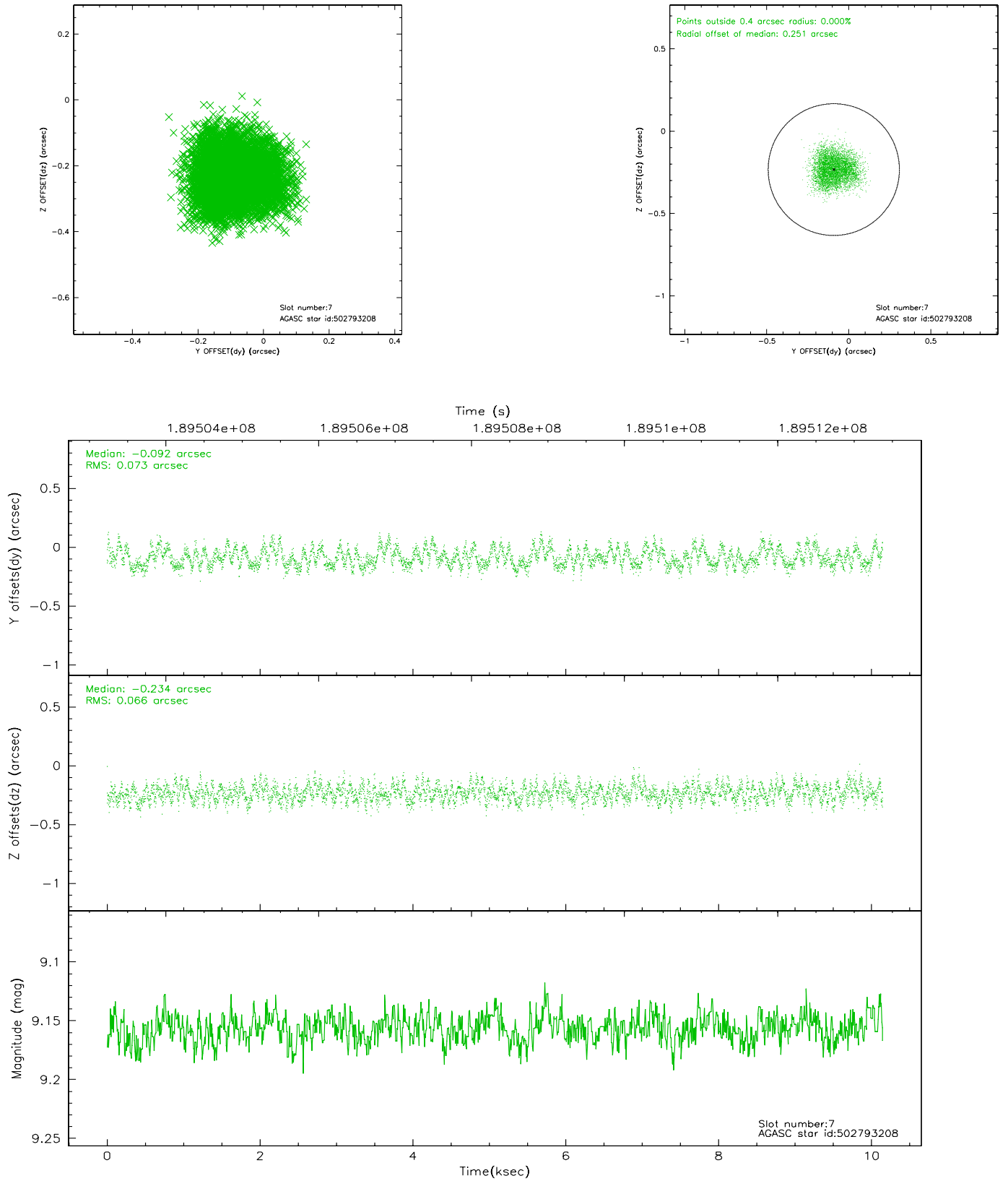
2.4.3 Slot 5



2.4.4 Slot 6

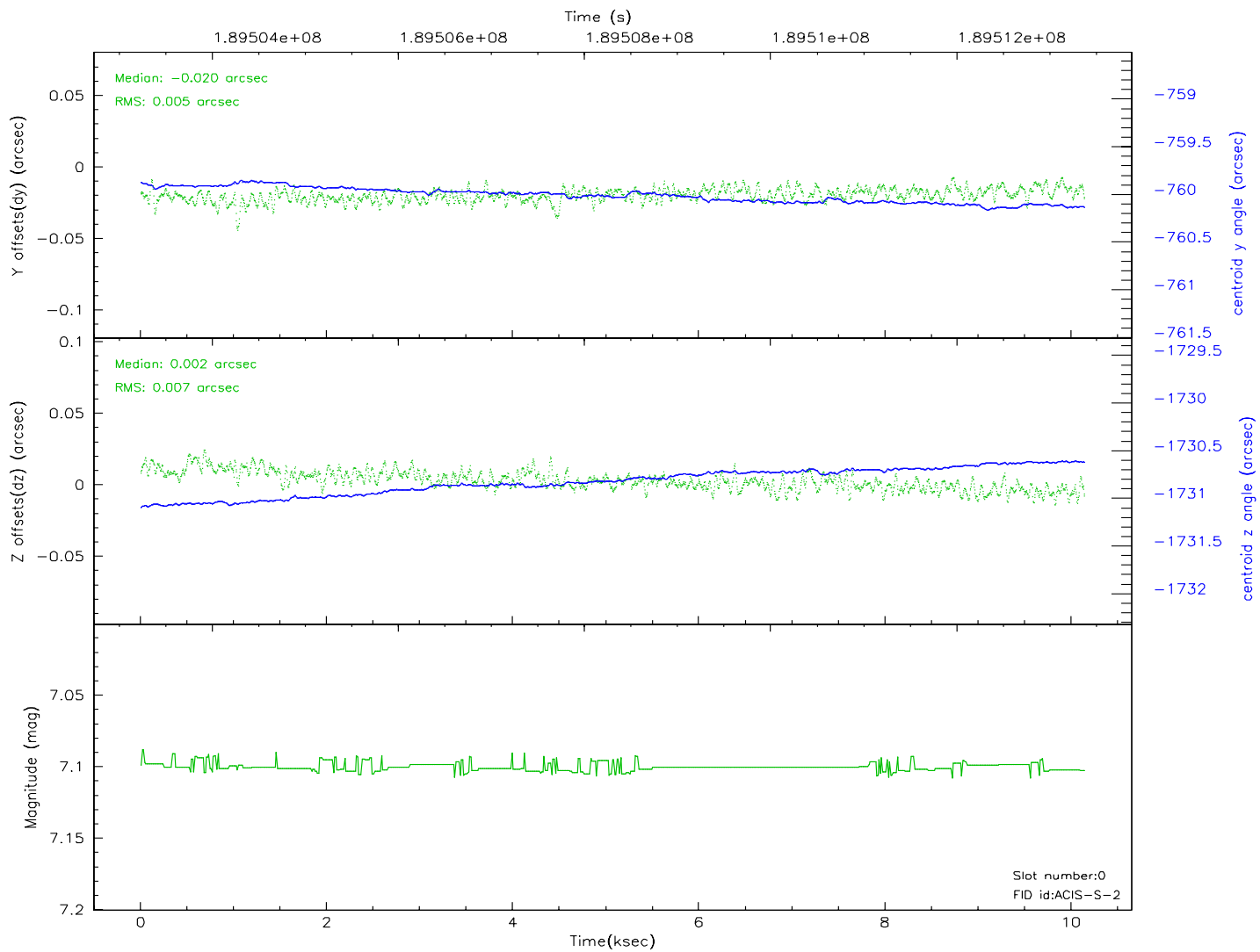
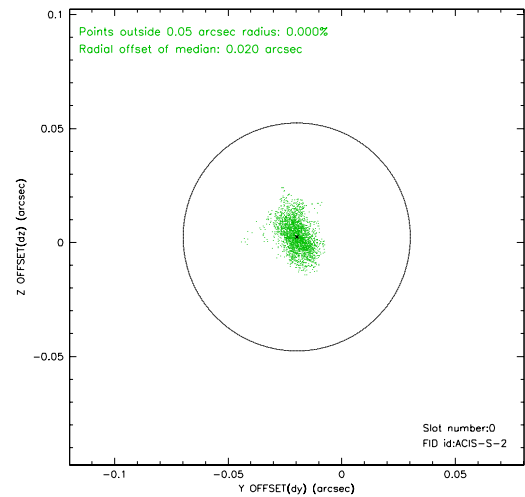
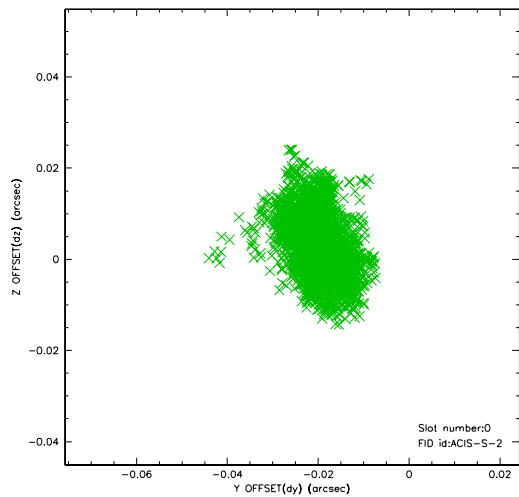


2.4.5 Slot 7

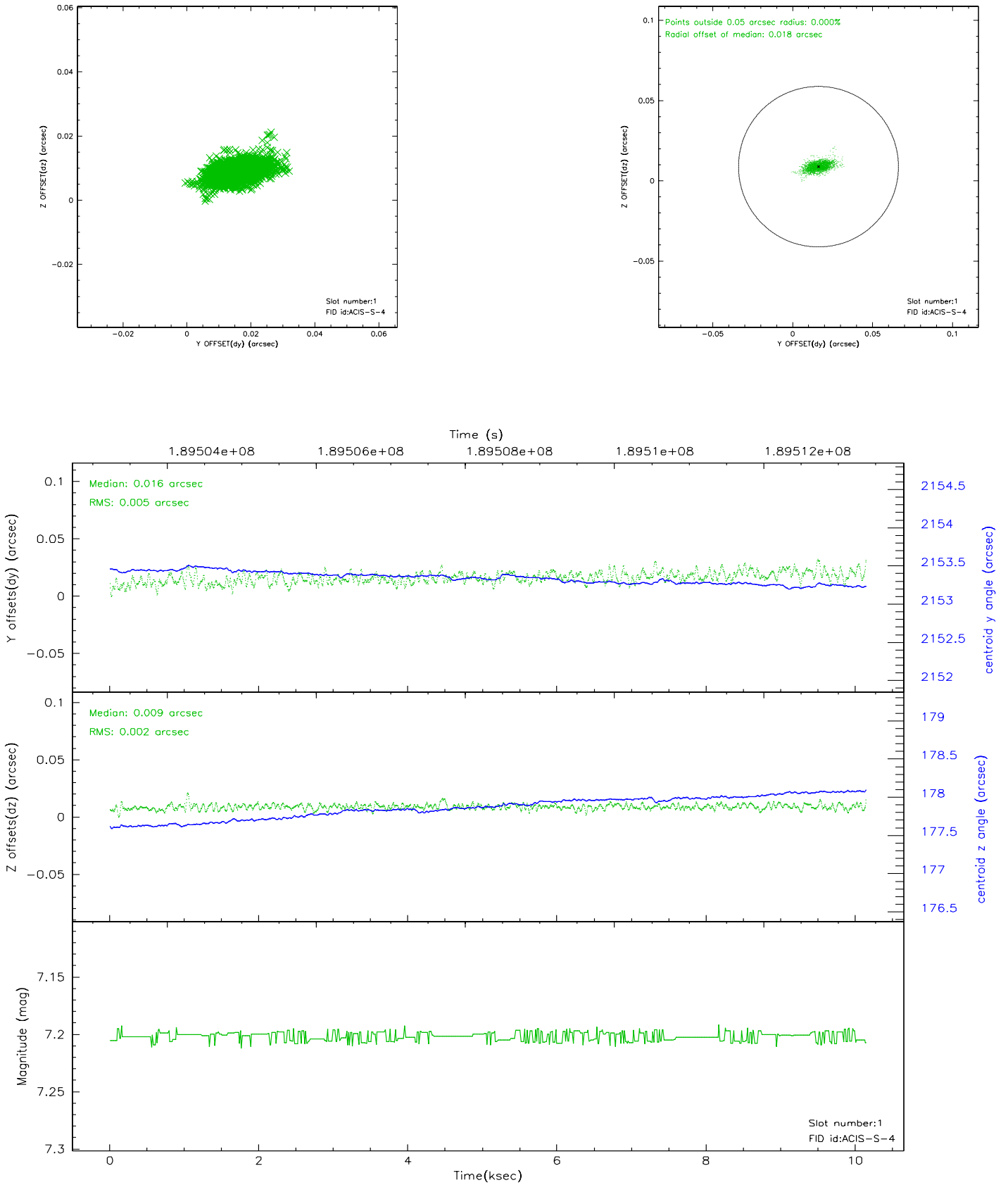


2.5 FID Slots

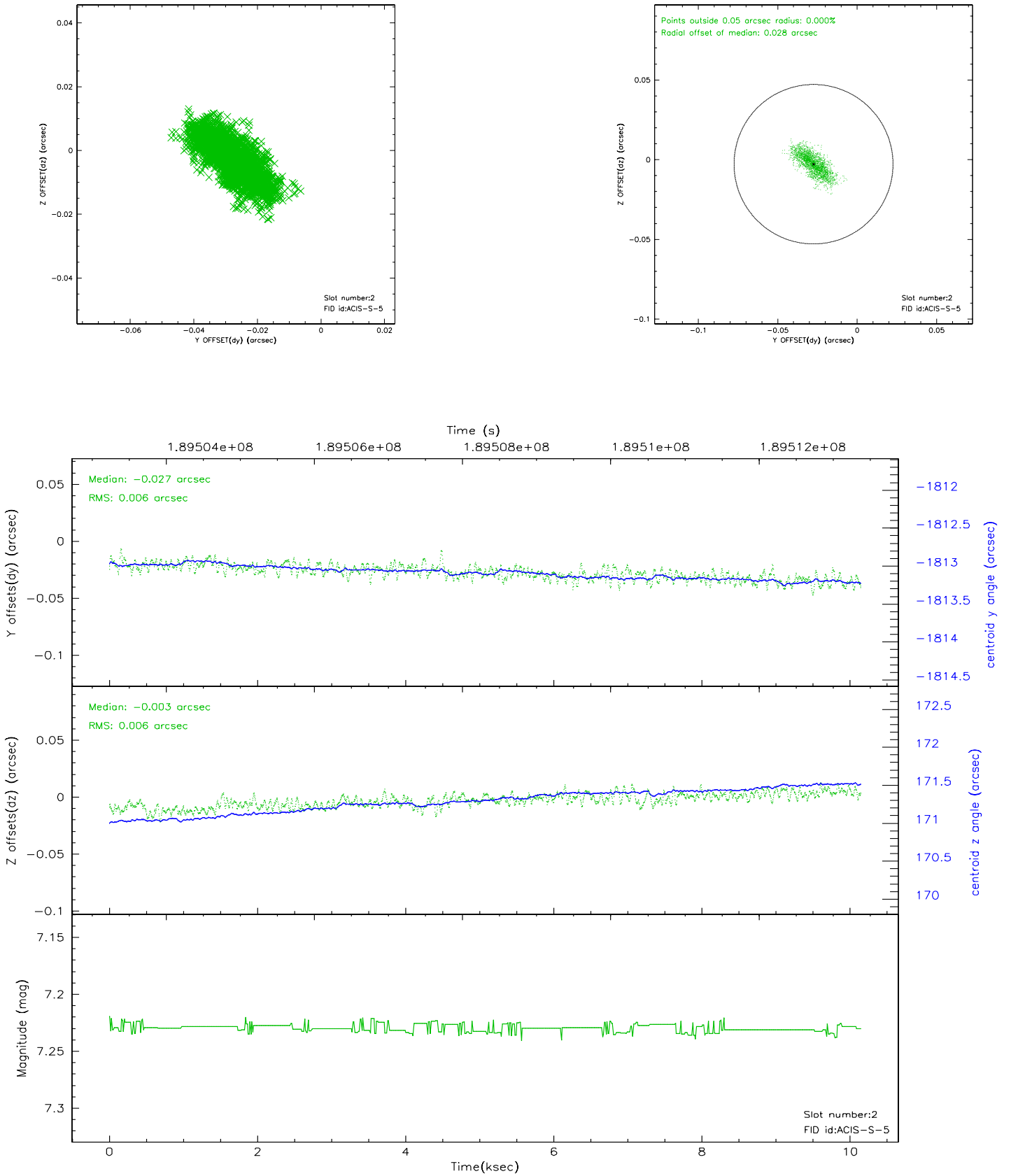
2.5.1 Slot 0



2.5.2 Slot 1



2.5.3 Slot 2



3 Point Sources

A Summary

A.1 Status

V&V Scientist	Beth Sundheim
V&V Date (YYYY-MM-DD)	2006.06.08
V&V Edition	1
V&V Disposition and Status	OK
V&V Charge Time	10.148

A.2 Comments