

V&V Reference Report

L2 ASCDS Version : 8.4.5

Observation 4815 - L2 Version 3
Chandra X-Ray Center

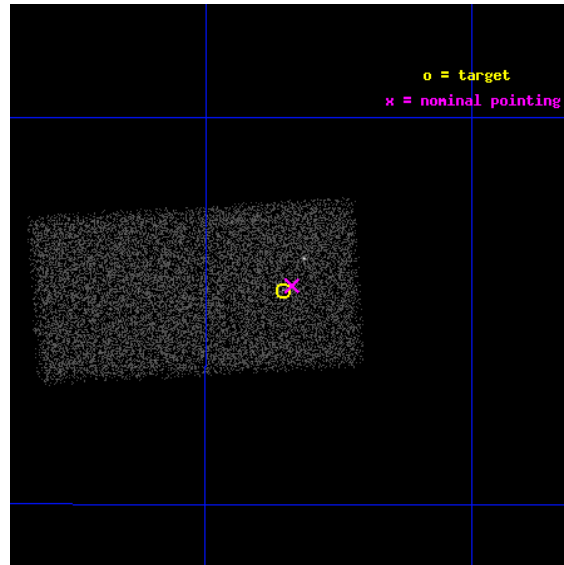
L2 Processing Date : Dec 2 2012

Contents

1	Front	2
2	OBI	3
2.1	OBI	3
2.1.1	Images	3
2.1.2	Bias	3
2.1.3	Parameters	4
2.1.4	Events	4
2.2	Compared Parameters	5
2.3	Aspect	6
2.4	Star Slots	9
2.4.1	Slot 3	9
2.4.2	Slot 4	10
2.4.3	Slot 5	11
2.4.4	Slot 6	12
2.4.5	Slot 7	13
2.5	FID Slots	14
2.5.1	Slot 0	14
2.5.2	Slot 1	15
2.5.3	Slot 2	16
A	Summary	17
A.1	Status	17
A.2	Comments	17

1 Front

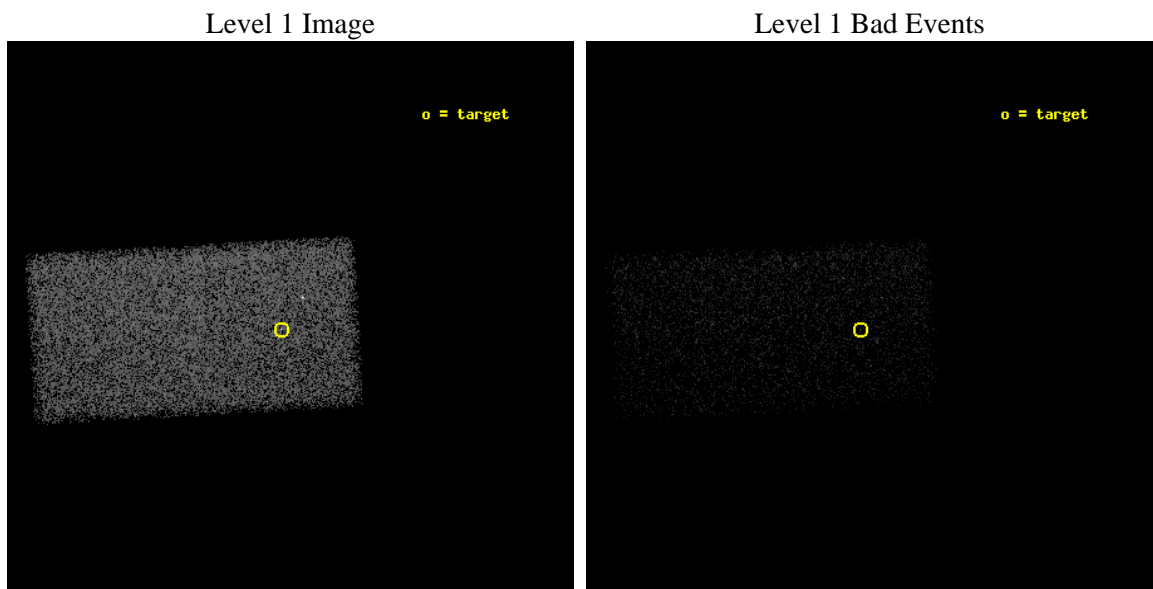
seq_num	700898	Sequence number
obs_id	4815	Observation id
title	VLBI-selected high redshift quasars as X-ray beacons in the Early Universe	Proposal title
observer	Dr. Leonid Gurvits	Principal investigator
object	J1715+2145	Source name
dtcycle	0	
cycle	P	events from which exps? Prim/Second/Both
ra_targ	258.83875	Observer's specified target RA [deg]
dec_targ	21.758806	Observer's specified target Dec [deg]
ra_nom	258.83446466006	Nominal RA [deg]
dec_nom	21.760702178276	Nominal Dec [deg]
roll_nom	176.81477093807	Nominal Roll [deg]
revision	3	Processing version of data
ontime	9804.0	Sum of GTIs [s]
liveltime	9542.9060893941	Livetime [s]
ontime7	9804.0	Sum of GTIs [s]
l2events	21186	Number of level 2 events



2 OBI

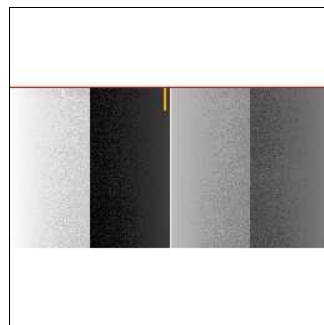
2.1 OBI

2.1.1 Images



2.1.2 Bias

Chip 7



2.1.3 Parameters

obi_num	0	Obi number	sched_exp_time	9657.000000	[s] Scheduled observation exposure time
ascdsver	8.4.5	Processing system revision	ontime	9804.0	Sum of GTIs [s]
caldsver	4.5.2	 	ontime7	9804.0	Sum of GTIs [s]
date	2012-12-02T23:47:12	Date and time of file creation	l1events	58231	Number of level 1 events
revision	3	Processing version of data			

2.1.4 Events

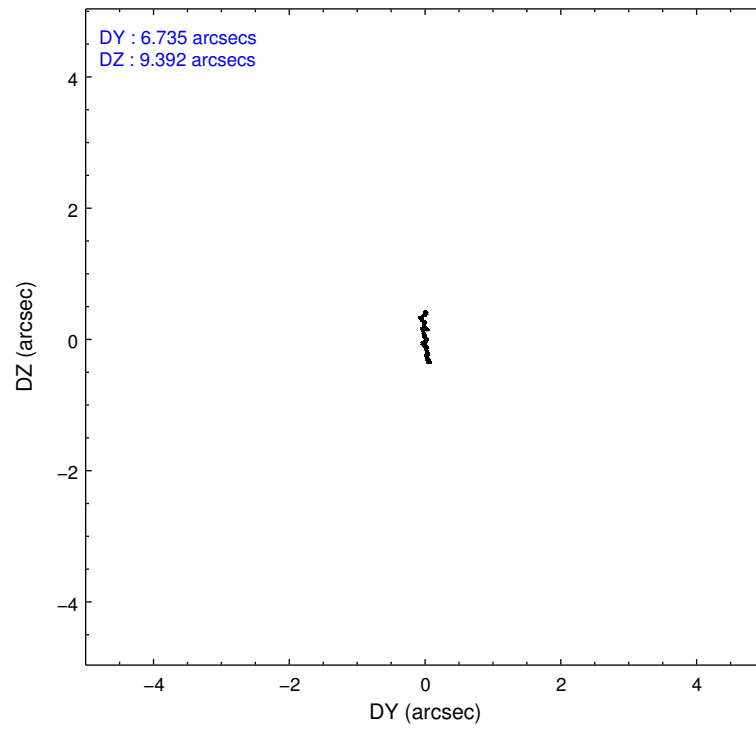
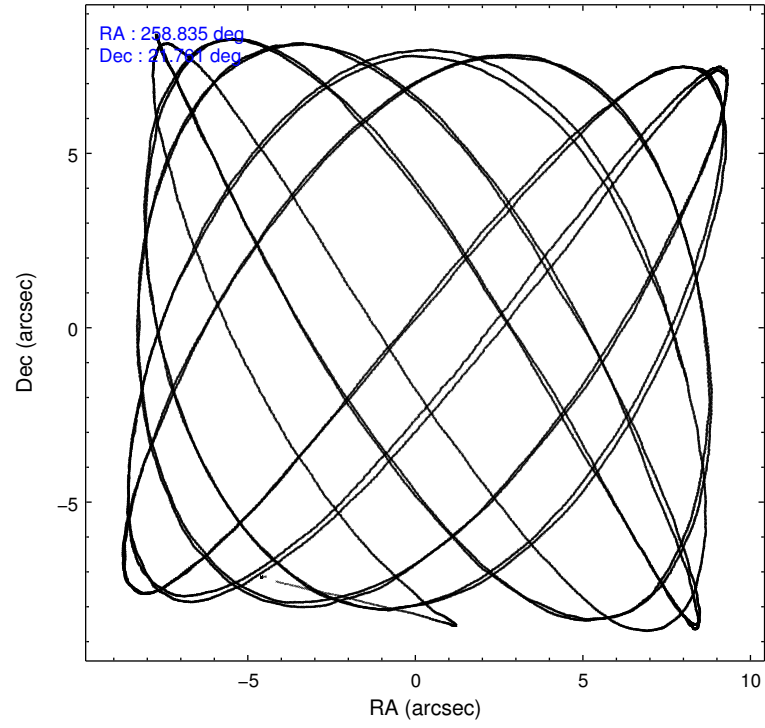
	ccd 7
level 1 events	58231
rejected events	36472
rejected %	62%

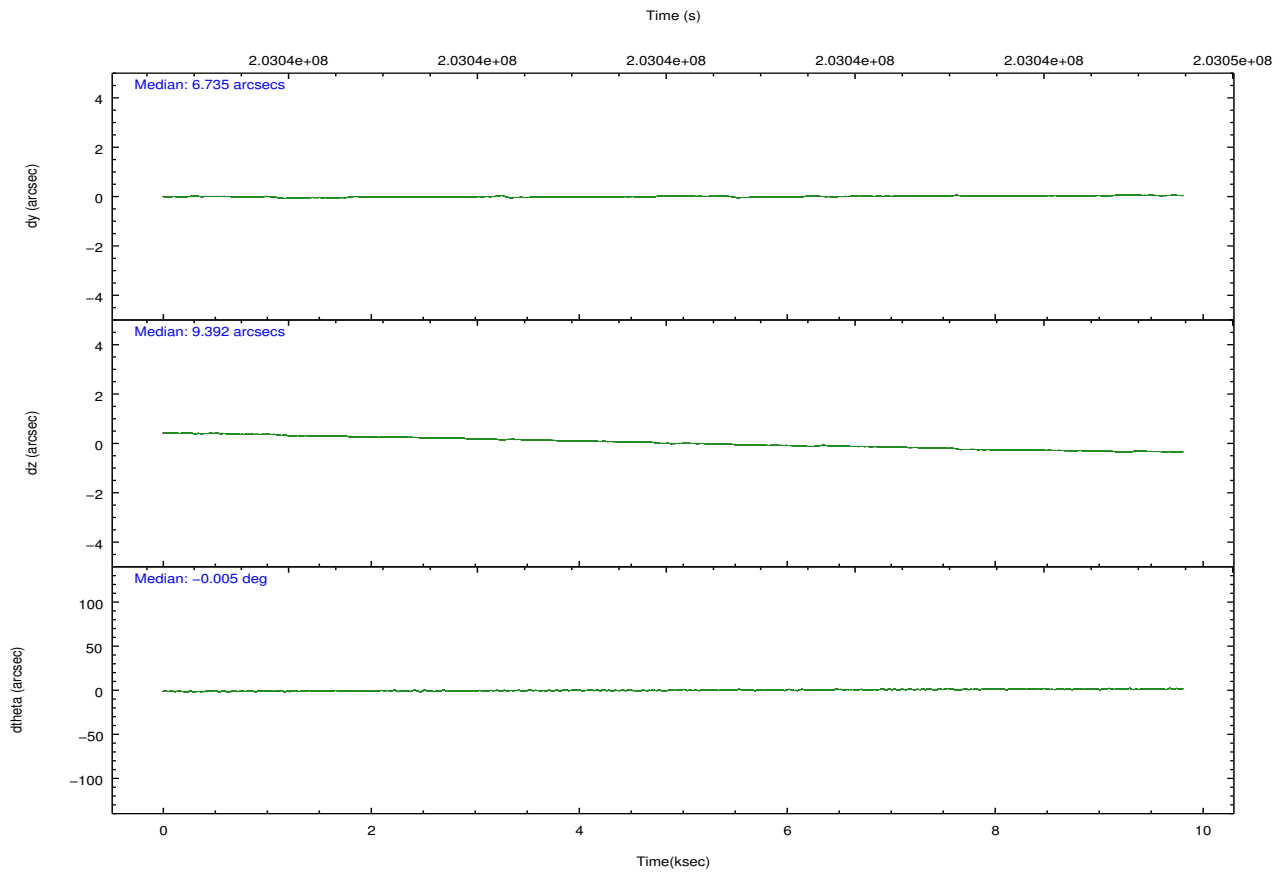
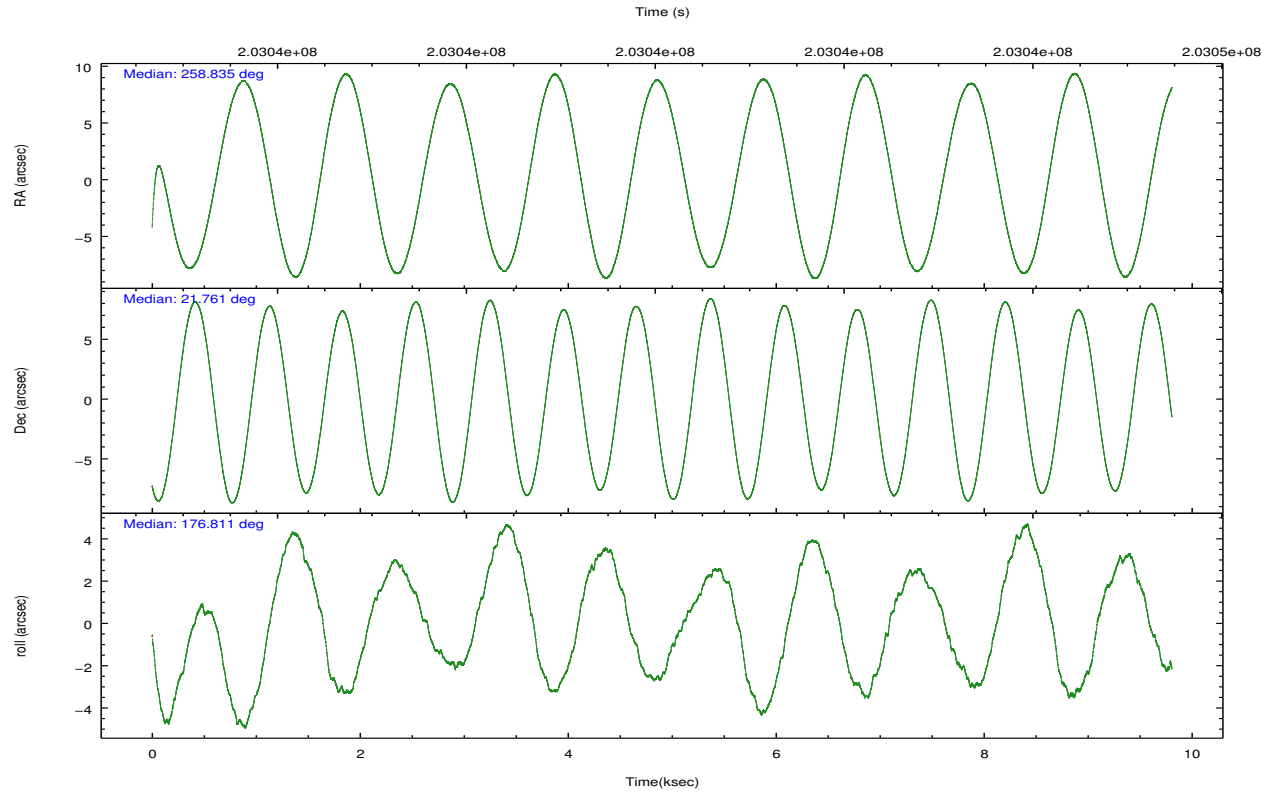
	ccd 7
grade 0 events	2579
	4%
grade 1 events	69
	0%
grade 2 events	5222
	8%
grade 3 events	2631
	4%
grade 4 events	2493
	4%
grade 5 events	5687
	9%
grade 6 events	12689
	21%
grade 7 events	26861
	46%

2.2 Compared Parameters

Parameter	Planned	Actual	Parameter	Planned	Actual
Instrument	ACIS	ACIS	Obspar format version number	7	7
Detector	ACIS-7	ACIS-7	Obspar file type	PREDICTED	ACTUAL
Grating	NONE	NONE	Obspar update status	NONE	UPDATED
Data mode	VFAINT	VFAINT	Number of optional ACIS chips dropped	0	0
Observation mode	POINTING	POINTING	On-chip summing requested	N	N
[deg] Pointing RA	258.860523	258.8344646600612	Subarray requested	CUSTOM	1/2
[deg] Pointing Dec	21.773313	21.76070217827615	Subarray start row	257	257
[deg] Pointing Roll	176.648473	176.8147709380737	Subarray row count	512	512
[mm] SIM focus pos	-0.684267	-0.6828225247311905	Alternating exposures requested	N	N
[mm] SIM defocus	0	0.001444936568705701	[s] Primary exposure time	0.000000	1.5
[mm] SIM translation stage pos	-190.132523	-190.1425803651734			
[mm] SIM translation stage offset	0	0.01005778216563158			
[s] Observation start time (MET)	203035317.184000	203033382.27566			
Observation start date	2004-06-07T22:40:53	2004-06-07T22:09:42			
[s] Observation end time (MET)	203044974.184000	203046285.48874			
Observation end date	2004-06-08T01:21:50	2004-06-08T01:44:45			
Read mode	TIMED	TIMED			

2.3 Aspect



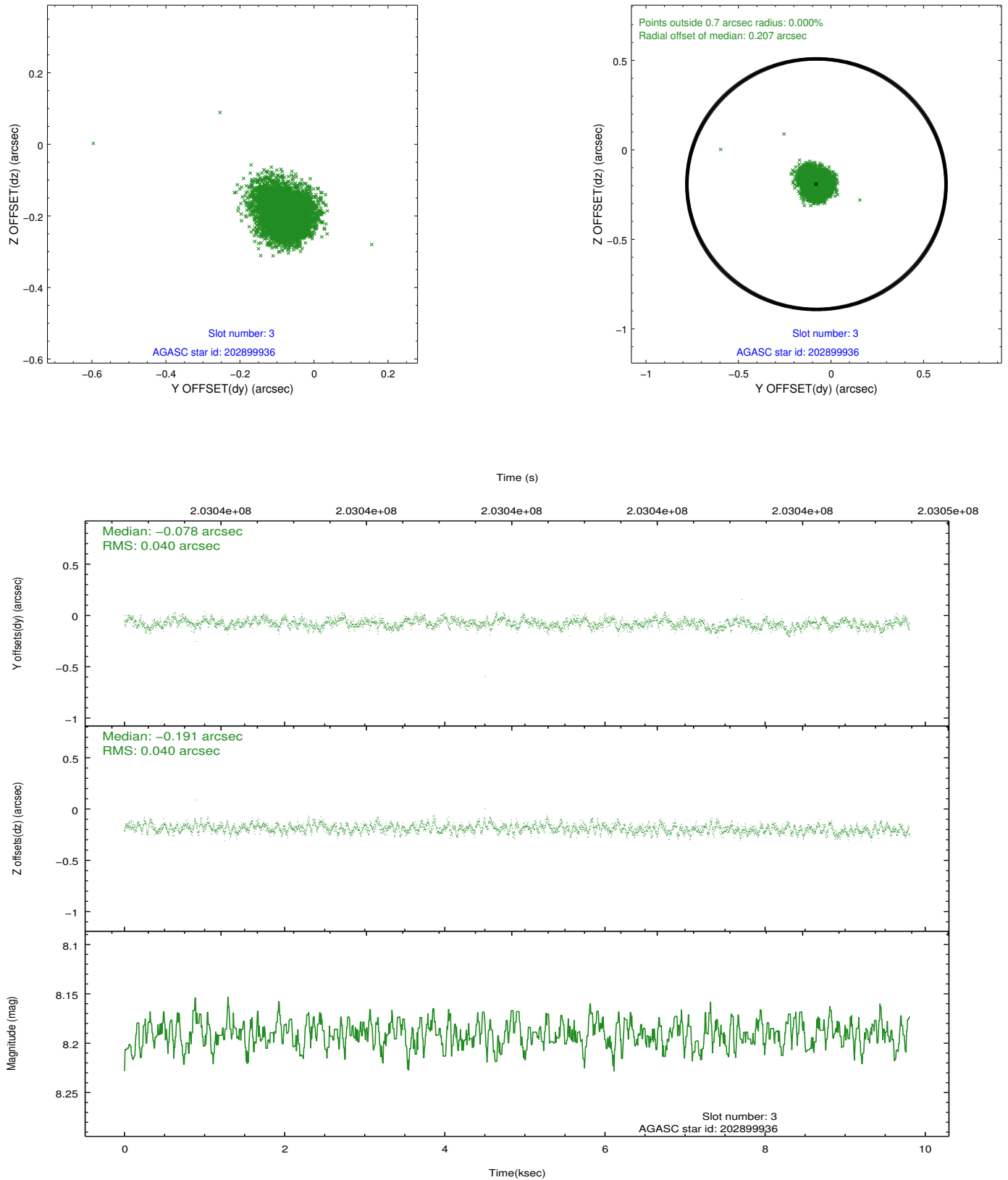


Slot Statistics

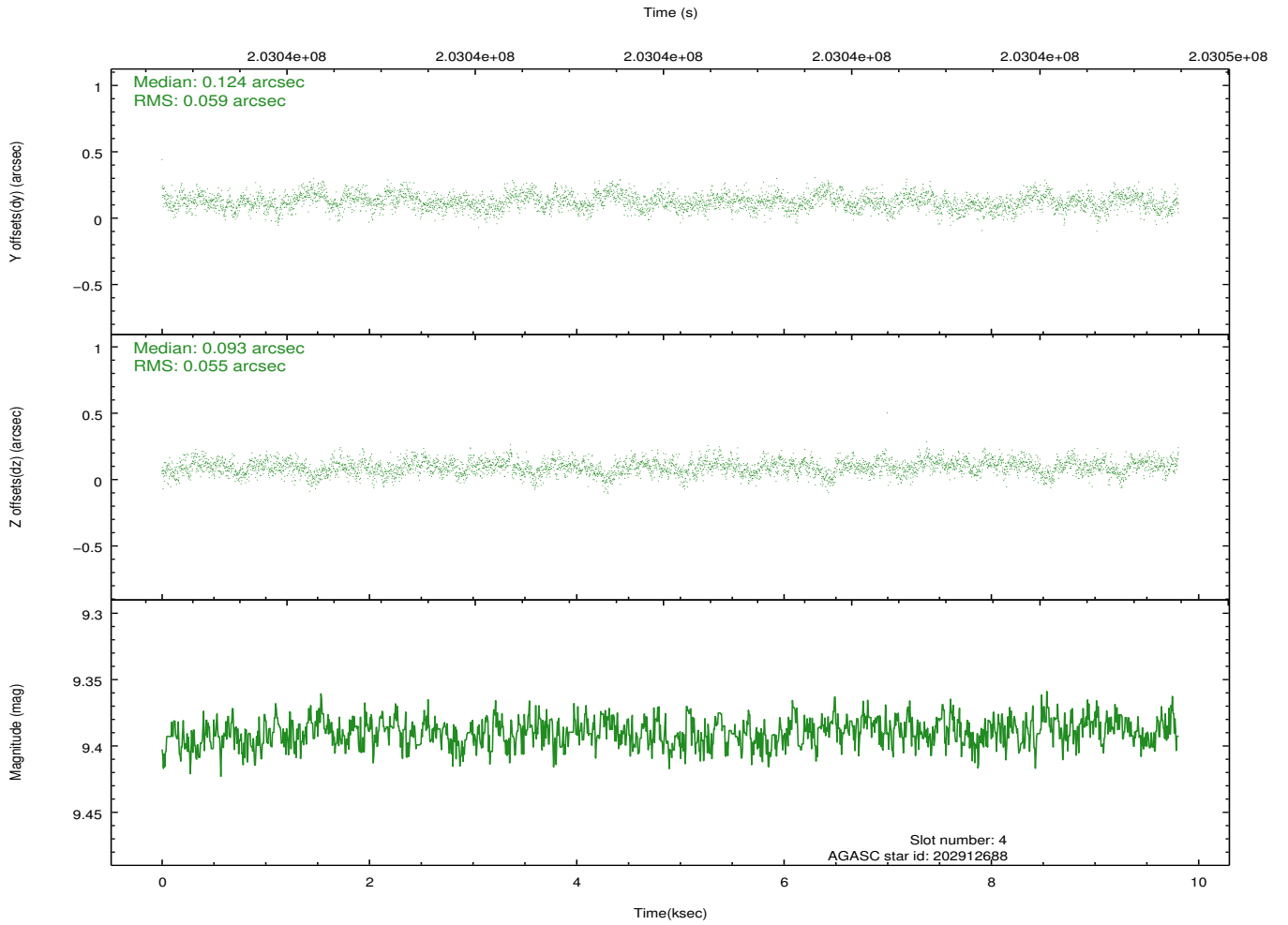
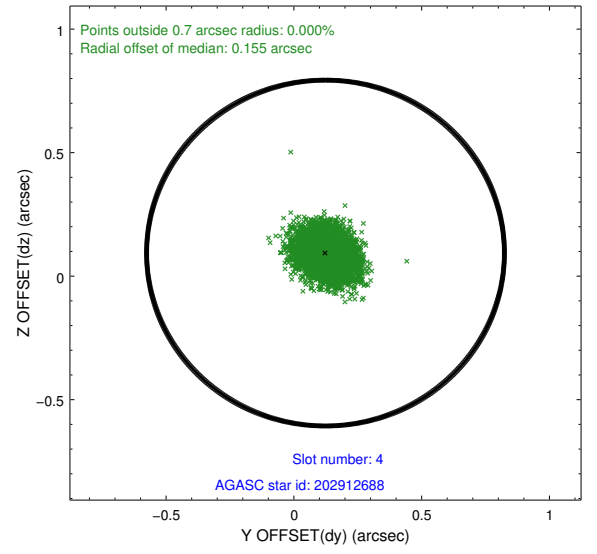
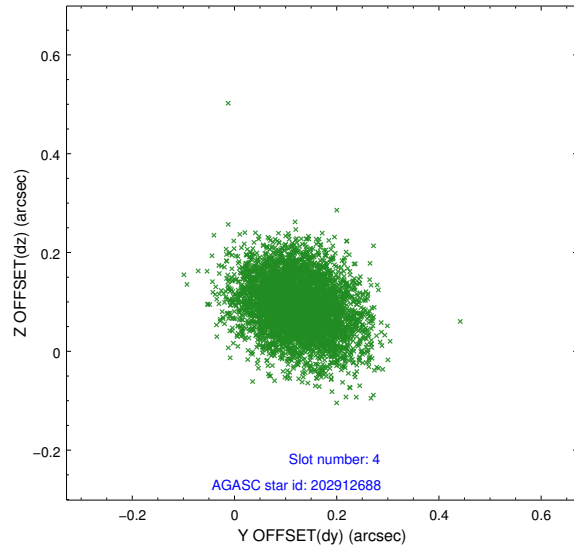
slot	status	id	mag	n_pts	med_dy	med_dz	dr1	dr2	ra	dec	mean_y	mean_z
0	FID	ACIS-S-2	7.10	2393	-0.046	-0.038	0.013	0.022	0.000000	0.000000	-759.51	-1730.64
1	FID	ACIS-S-4	7.20	2393	0.082	0.033	0.017	0.036	0.000000	0.000000	2153.62	177.38
2	FID	ACIS-S-5	7.23	2392	-0.064	0.014	0.010	0.017	0.000000	0.000000	-1811.69	171.62
3	GUIDE	202899936	8.19	4785	-0.078	-0.191	0.059	0.096	258.328552	21.310381	1683.78	1765.08
4	GUIDE	202912688	9.39	4783	0.124	0.093	0.086	0.140	258.419322	21.995921	1517.79	-715.10
5	GUIDE	202916576	8.44	4785	-0.040	0.030	0.066	0.103	258.787559	21.564303	200.21	765.54
6	GUIDE	202917128	8.98	4784	0.007	-0.057	0.085	0.141	259.315633	21.212347	-1642.77	1924.76
7	GUIDE	202904992	9.45	4777	-0.011	0.132	0.118	0.191	259.271452	22.342593	-1246.23	-2127.17

2.4 Star Slots

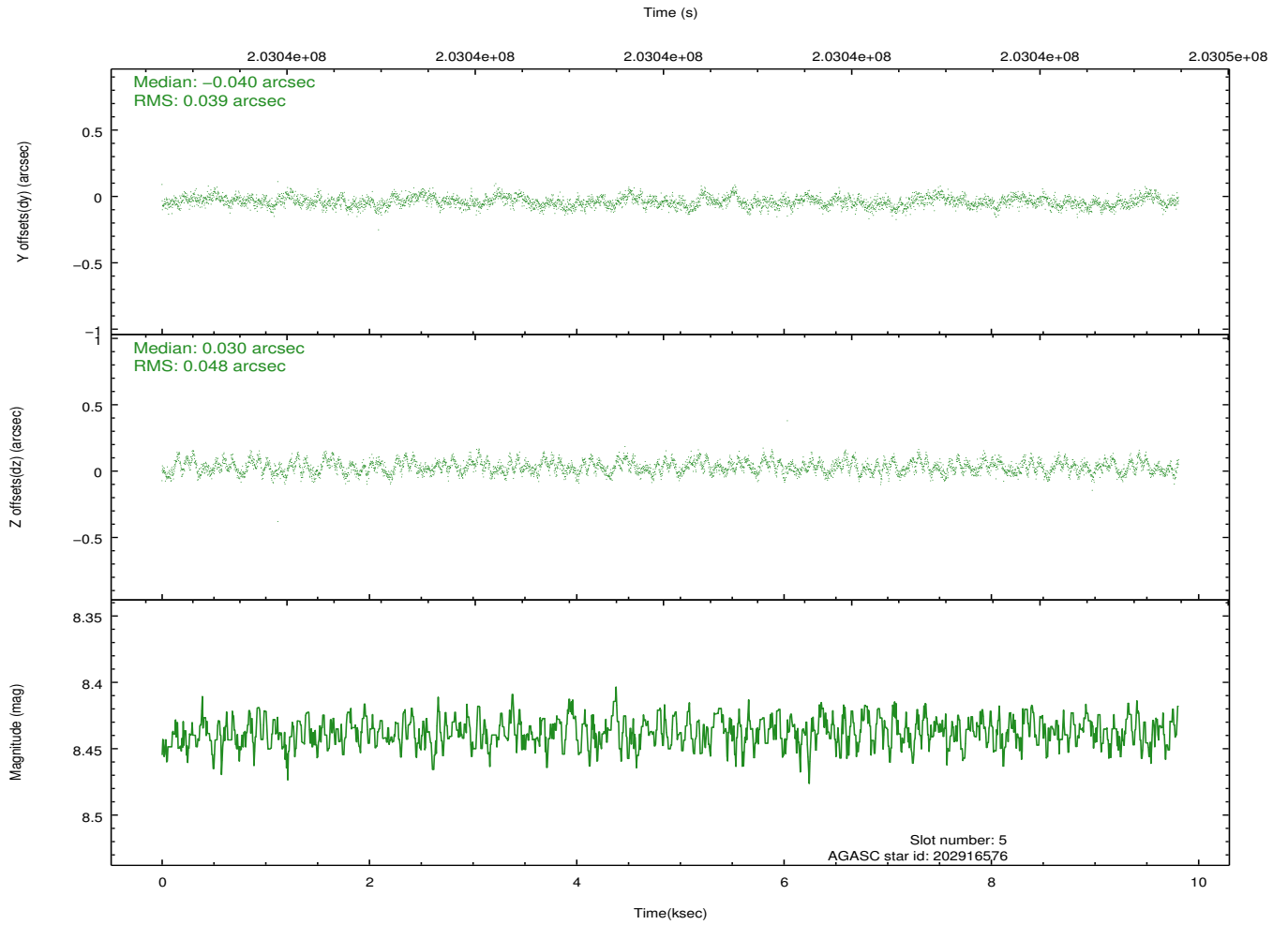
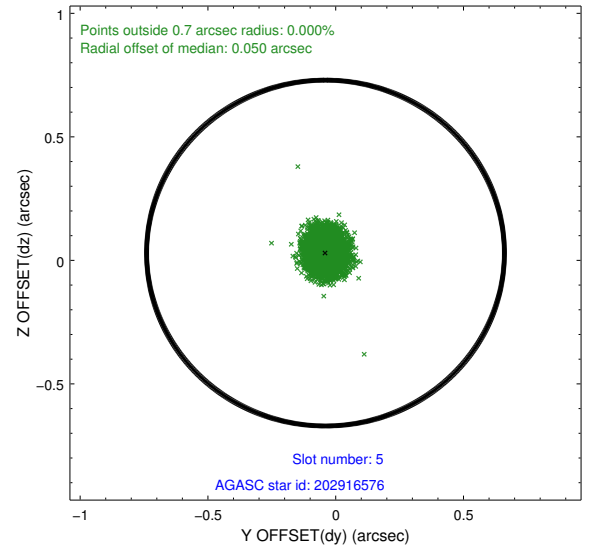
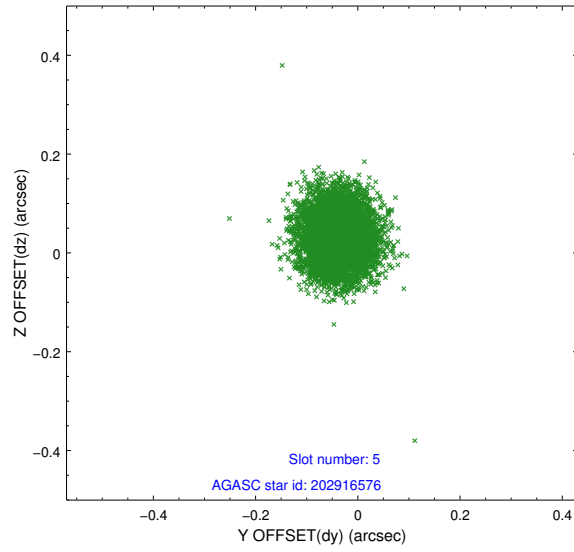
2.4.1 Slot 3



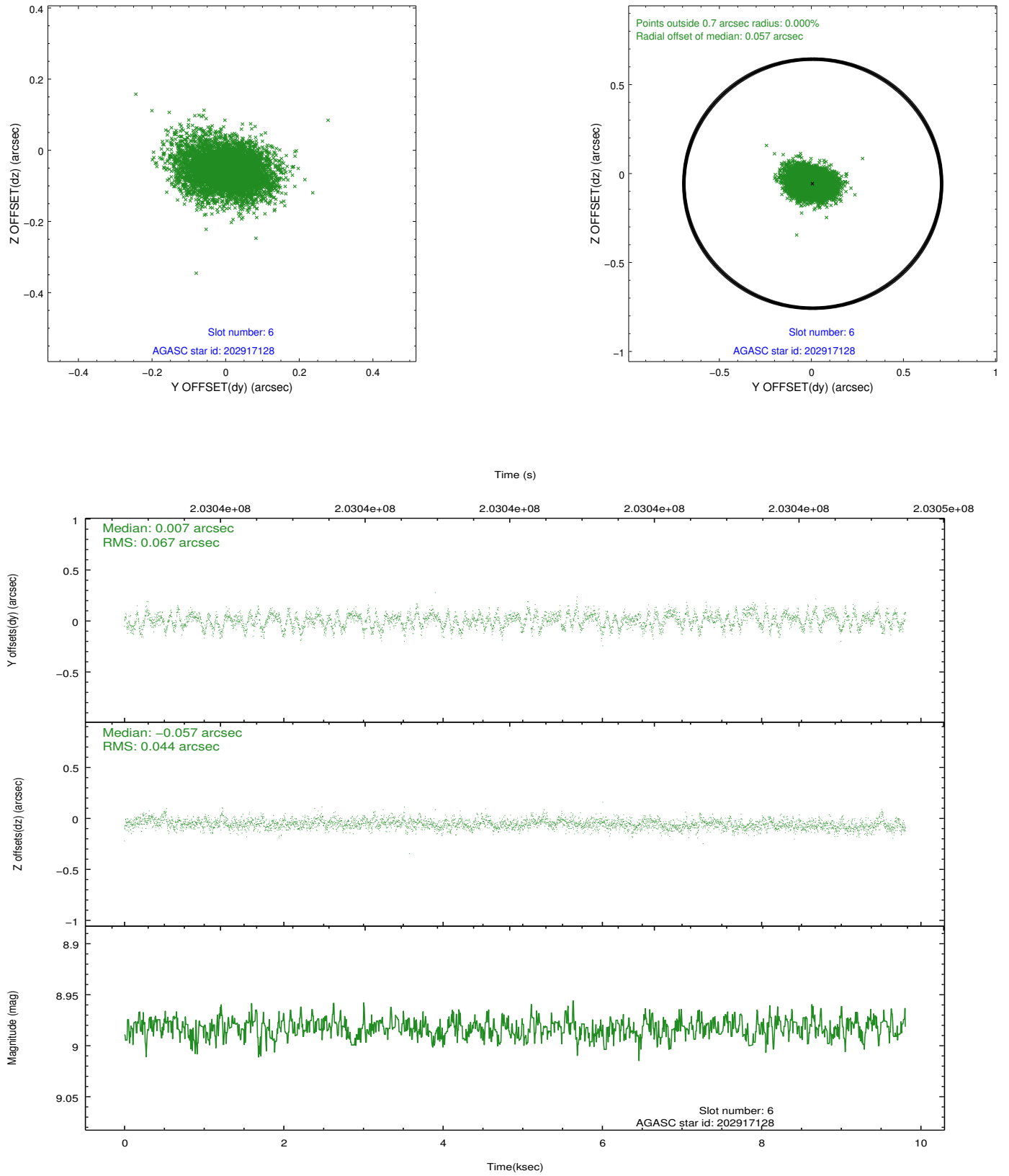
2.4.2 Slot 4



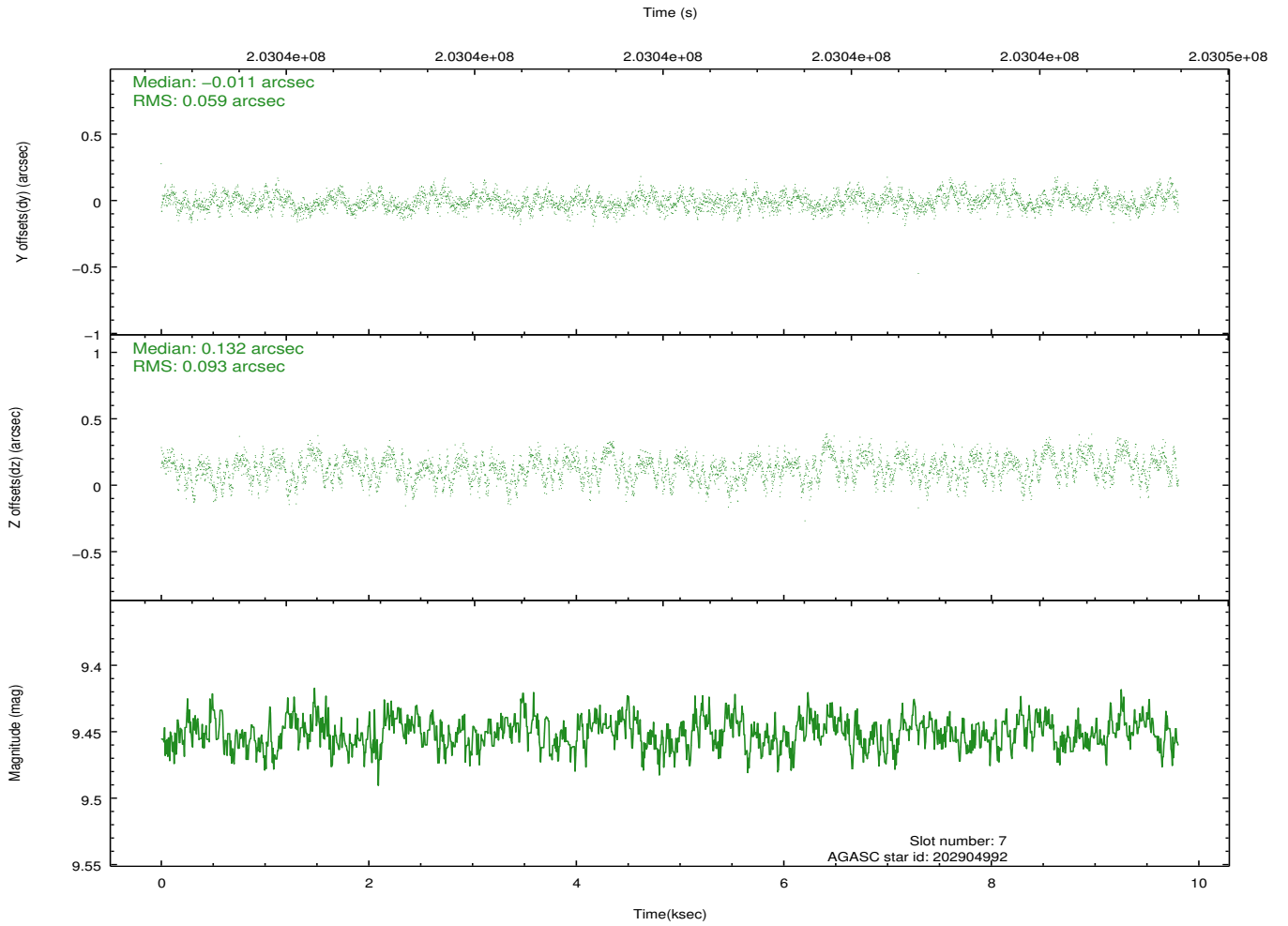
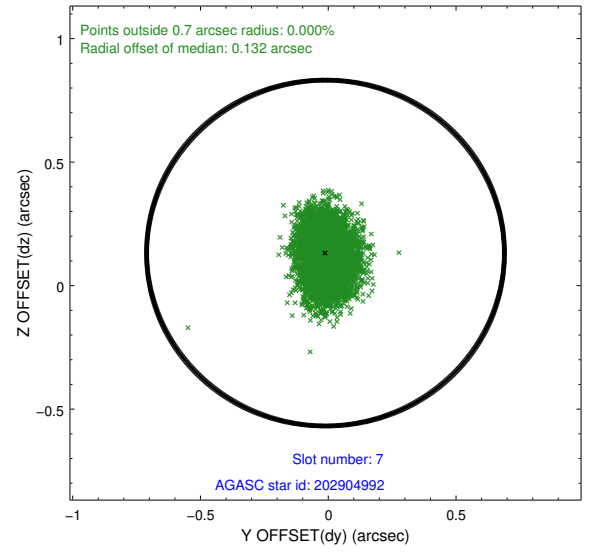
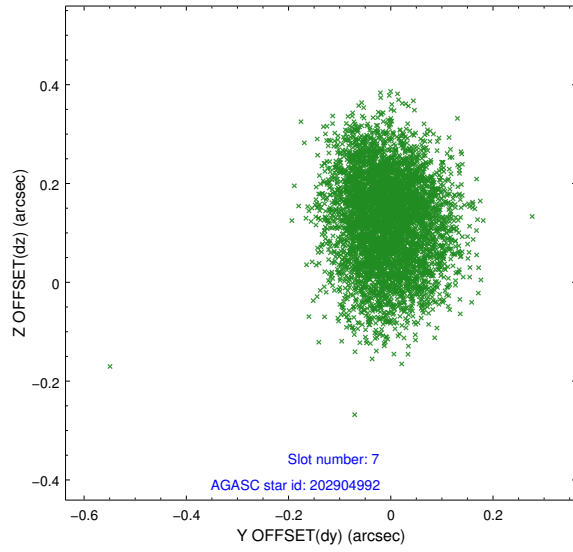
2.4.3 Slot 5



2.4.4 Slot 6

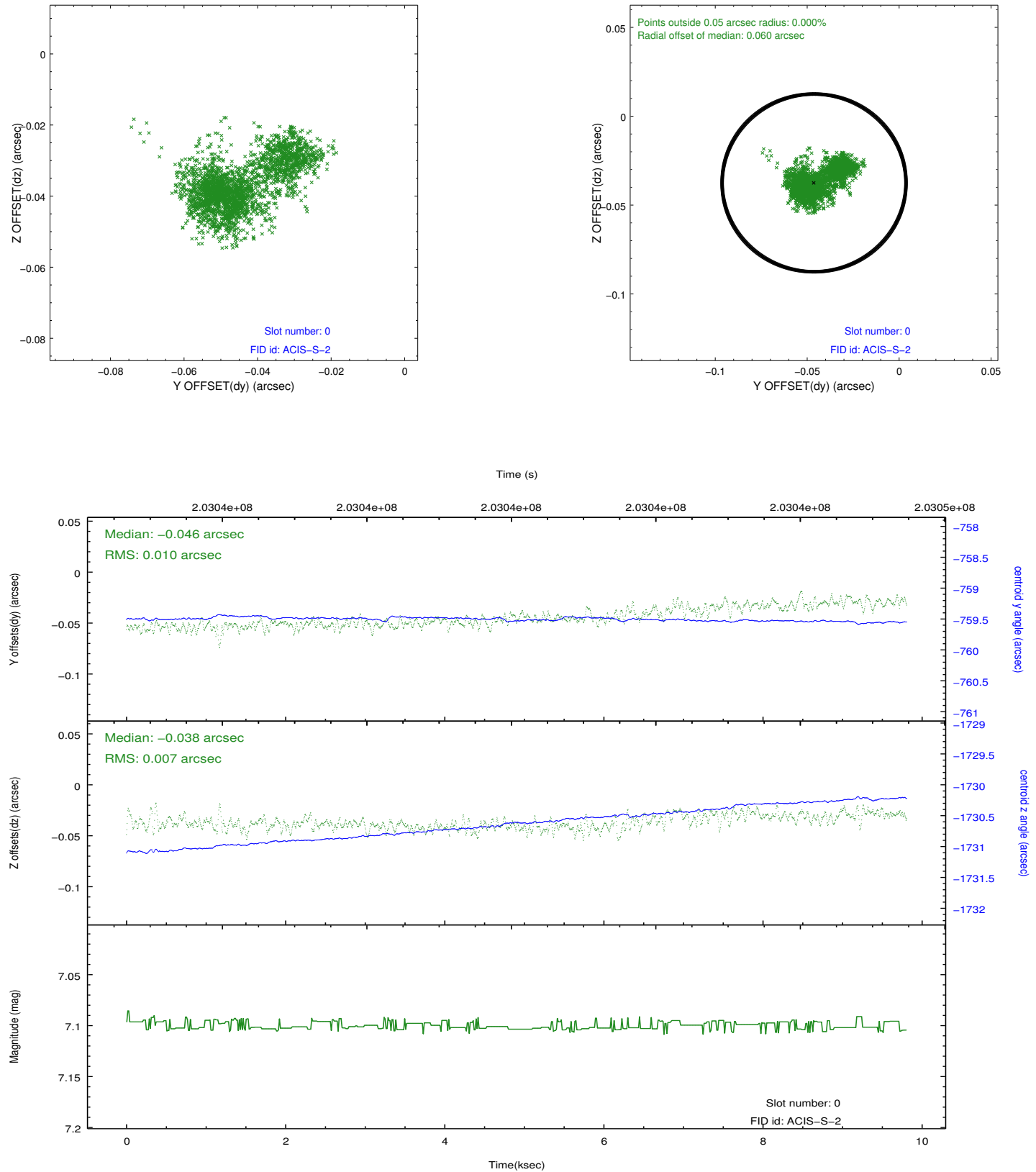


2.4.5 Slot 7

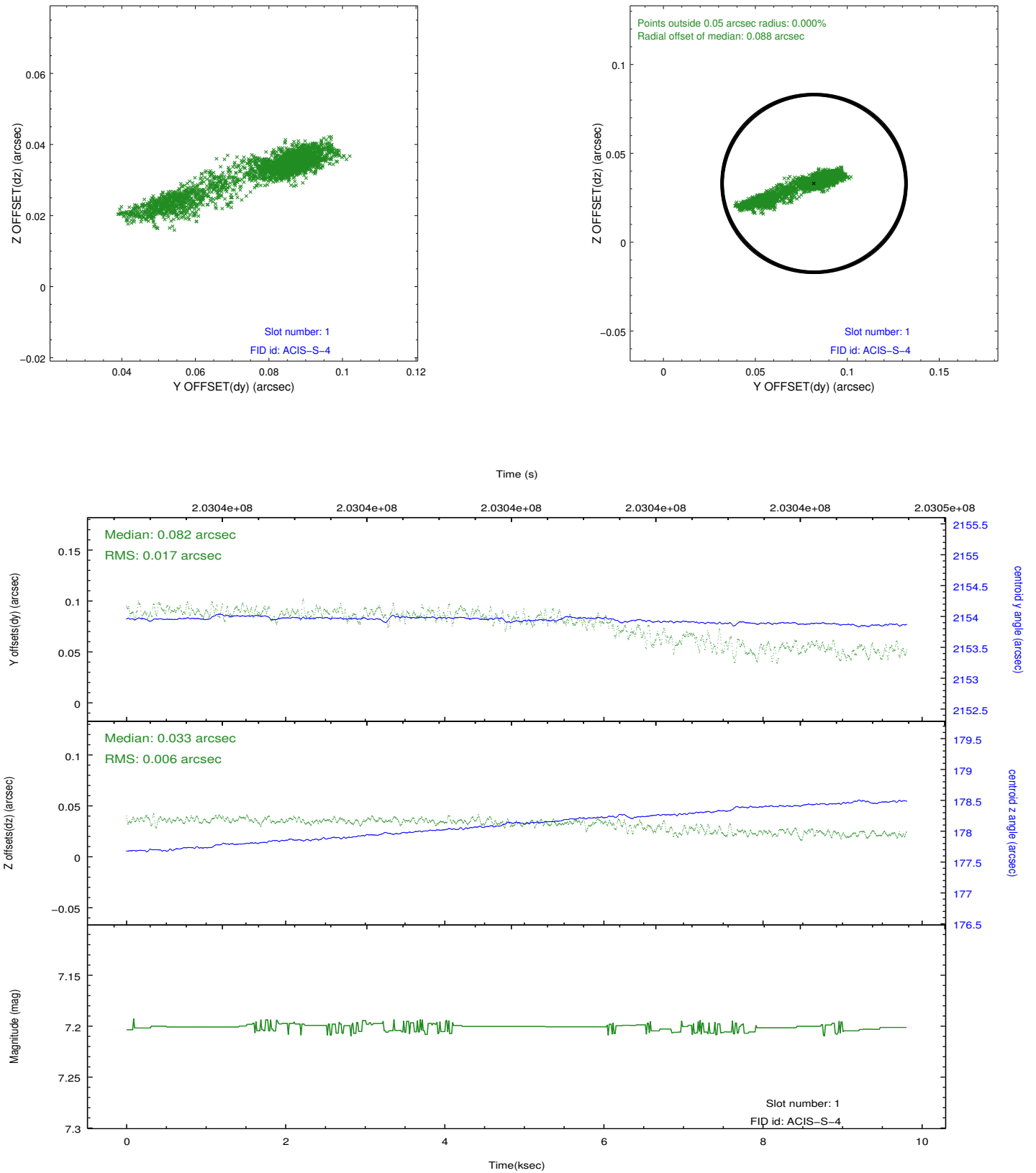


2.5 FID Slots

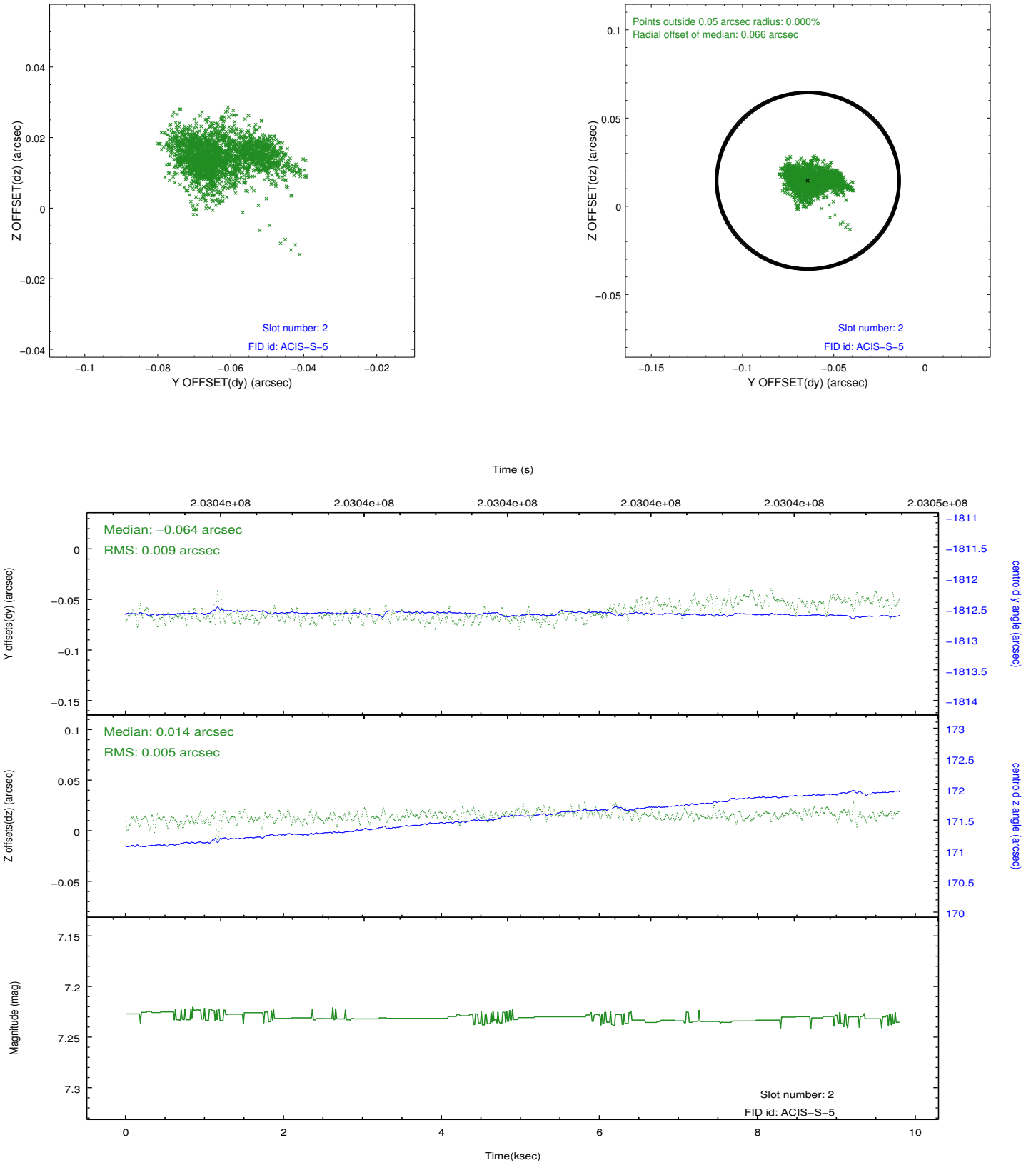
2.5.1 Slot 0



2.5.2 Slot 1



2.5.3 Slot 2



A Summary

A.1 Status

V&V Scientist	Jen Lauer
V&V Date (YYYY-MM-DD)	2012.12.17
V&V Edition	1
V&V Disposition and Status	OK
V&V Charge Time	9.804

A.2 Comments

Roll preference met.