

# V&V Reference Report

## L2 ASCDS Version : 7.6.7.2

Observation 4815 - L2 Version 001  
Chandra X-Ray Center

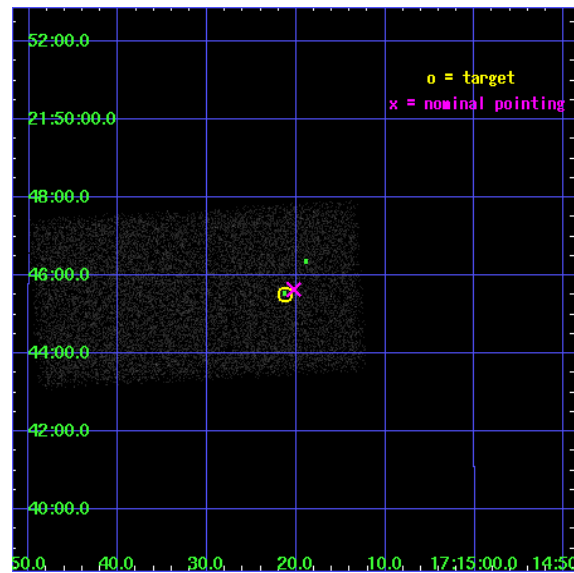
L2 Processing Date : May 1 2006

## Contents

<b>1</b>	<b>Front</b>	<b>2</b>
<b>2</b>	<b>OBI</b>	<b>3</b>
2.1	OBI . . . . .	3
2.1.1	Images . . . . .	3
2.1.2	Bias . . . . .	3
2.1.3	Parameters . . . . .	4
2.1.4	Events . . . . .	4
2.2	Compared Parameters . . . . .	5
2.3	Aspect . . . . .	6
2.4	Star Slots . . . . .	9
2.4.1	Slot 3 . . . . .	9
2.4.2	Slot 4 . . . . .	10
2.4.3	Slot 5 . . . . .	11
2.4.4	Slot 6 . . . . .	12
2.4.5	Slot 7 . . . . .	13
2.5	FID Slots . . . . .	14
2.5.1	Slot 0 . . . . .	14
2.5.2	Slot 1 . . . . .	15
2.5.3	Slot 2 . . . . .	16
<b>3</b>	<b>Point Sources</b>	<b>17</b>
<b>A</b>	<b>Summary</b>	<b>18</b>
A.1	Status . . . . .	18
A.2	Comments . . . . .	18

# 1 Front

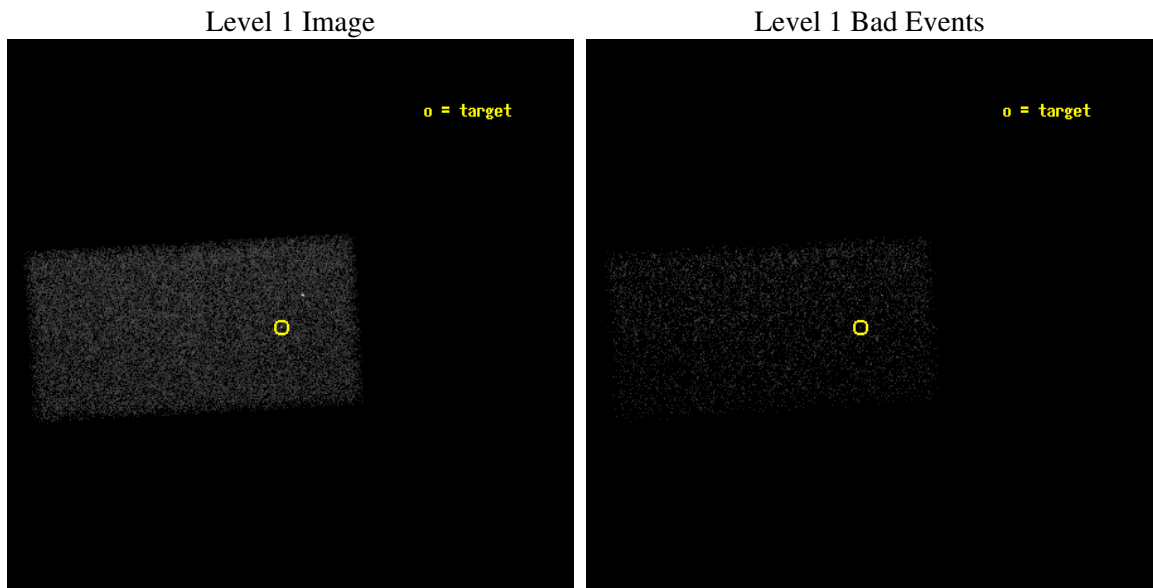
seq_num	700898
obs_id	4815
title	VLBI-selected high redshift quasars as X-ray beacons in the Early Universe
observer	Dr. Leonid Gurvits
object	J1715+2145
dtcycle	0
cycle	P
ra_targ	258.83875
dec_targ	21.758806
ra_nom	258.83449451829
dec_nom	21.760700559016
roll_nom	176.81475986192
revision	2
ontime	9804.0
livetime	9542.9060893941
ontime7	9804.0
l2events	19720



## 2 OBI

### 2.1 OBI

#### 2.1.1 Images



#### 2.1.2 Bias

Chip 7



### 2.1.3 Parameters

obi_num	0
ascdsver	7.6.7.2
caldbver	3.2.1
date	2006-05-01T11:38:54
revision	2

sched_exp_time	9657.000000
ontime	11593.116012663
ontime7	11593.116012663
l1events	58231

### 2.1.4 Events

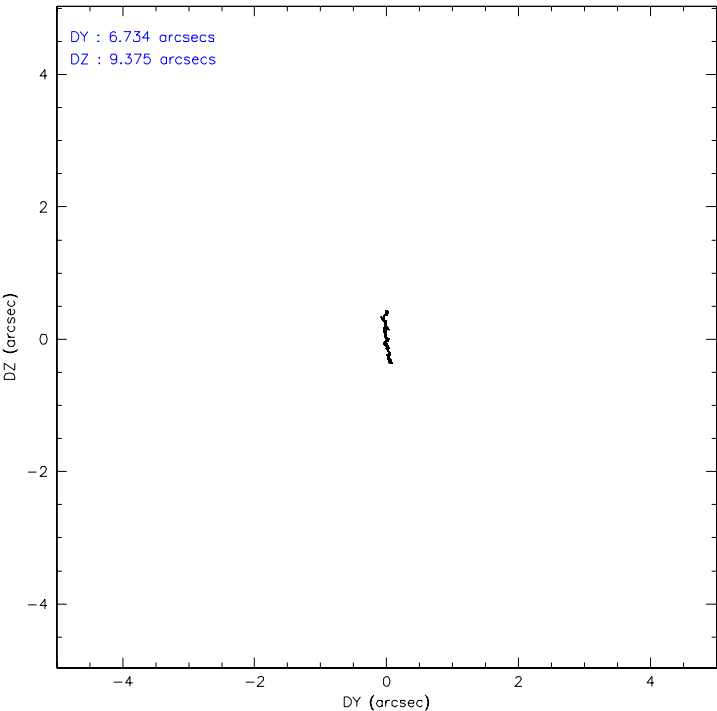
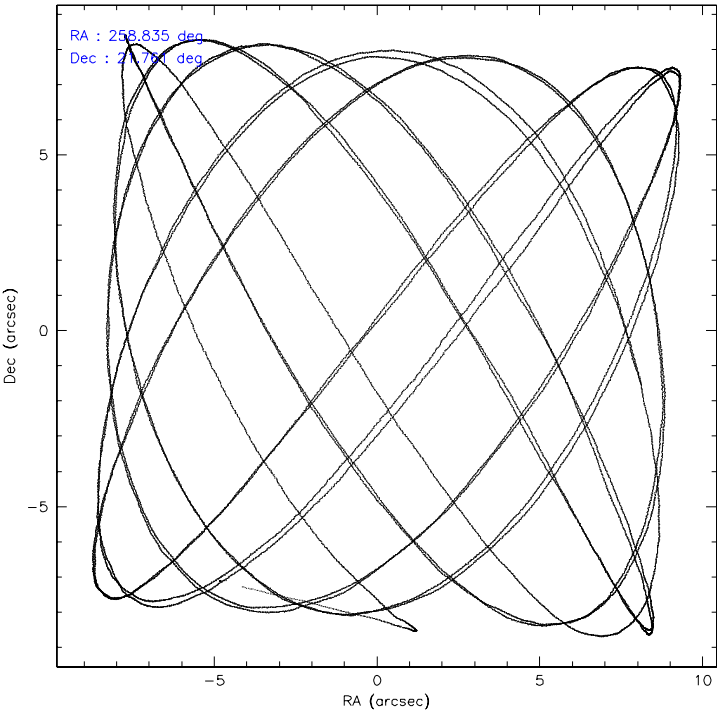
	<b>ccd 7</b>
level 1 events	58231
rejected events	37946
rejected %	65%

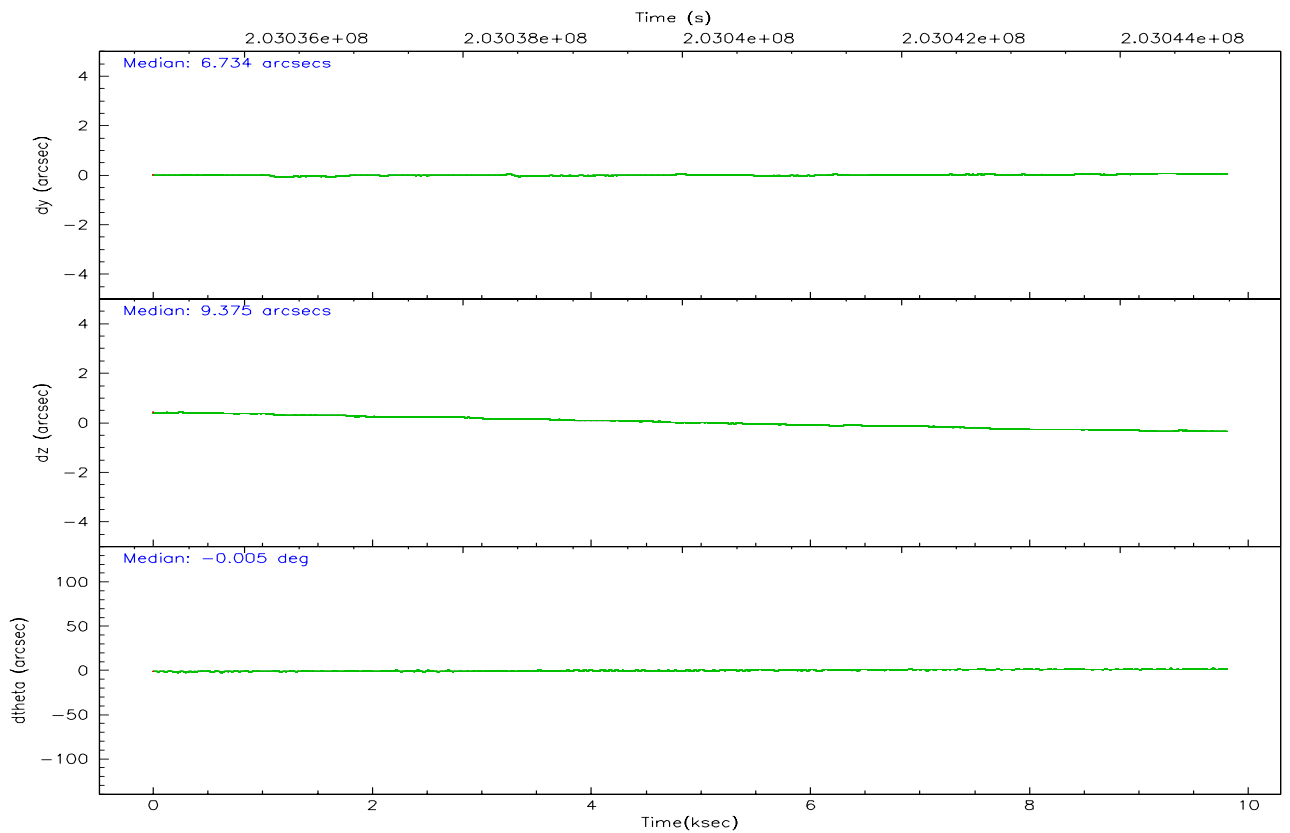
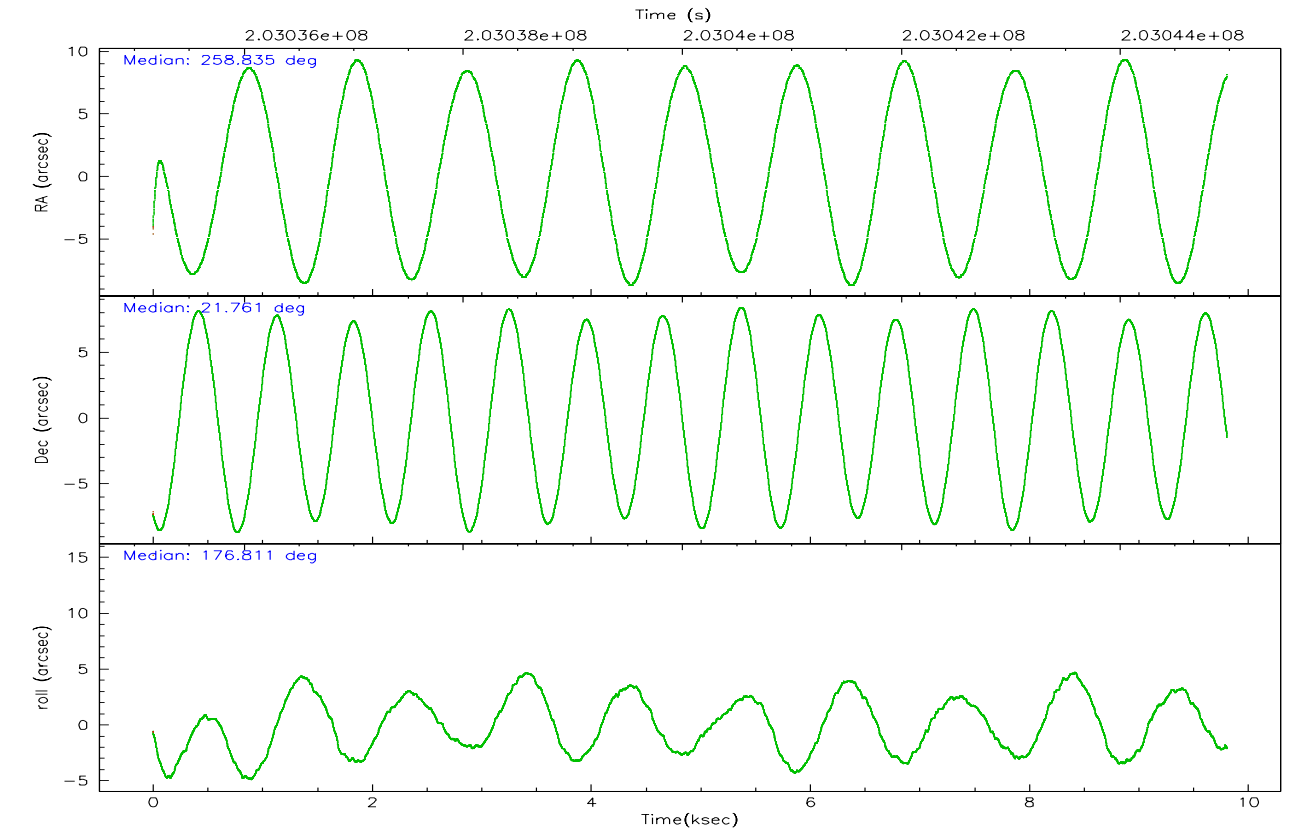
	<b>ccd 7</b>
grade 0 events	1628
	2%
grade 1 events	37
	0%
grade 2 events	5969
	10%
grade 3 events	1591
	2%
grade 4 events	1474
	2%
grade 5 events	4209
	7%
grade 6 events	13254
	22%
grade 7 events	30069
	51%

## 2.2 Compared Parameters

Parameter	Planned	Actual	Parameter	Planned	Actual
Instrument	ACIS	ACIS	Obspar format version number	6	6
Detector	ACIS-7	ACIS-7	Obspar file type	PREDICTED	ACTUAL
Grating	NONE	NONE	Obspar update status	NONE	UPDATED
Data mode	VFAINT	VFAINT	On-chip summing requested	N	N
Observation mode	POINTING	POINTING	Subarray requested	1/2	1/2
Pointing RA	258.860523	258.8344945182907	Subarray start row	0	257
Pointing Dec	21.773313	21.76070055901562	Subarray row count	1024	512
Pointing Roll	176.648473	176.8147598619192	Alternating exposures requested	N	N
SIM focus pos (mm)	-0.684267	-0.6828225247311905	Primary exposure time	0.000000	1.5
SIM defocus (mm)	0	0.001444936568705701			
SIM translation stage pos (mm)	-190.132523	-190.1425803651734			
SIM translation stage offset (mm)	0	0.01005778216563158			
Observation start time	203035317.184000	203033382.27566			
Observation start date	2004-06-07T22:40:53	2004-06-07T22:09:42			
Observation end time	203044974.184000	203046285.48874			
Observation end date	2004-06-08T01:21:50	2004-06-08T01:44:45			
Read mode	TIMED	TIMED			

2.3 Aspect





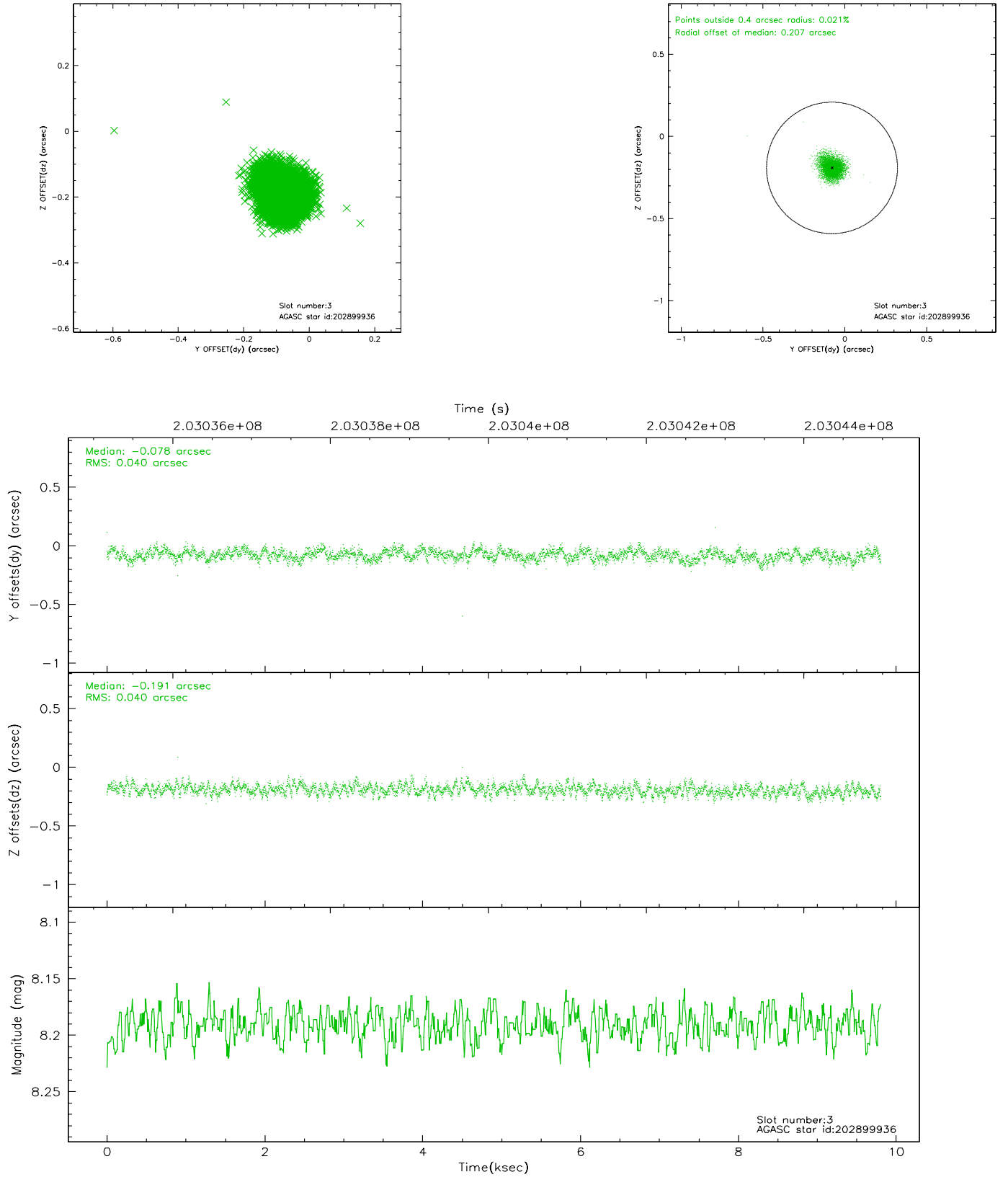
### Slot Statistics

slot	status	id	mag	n_pts	med_dy	med_dz	dr1	dr2	ra	dec	mean_y	mean_z
0	FID	ACIS-S-2	7.10	2393	-0.035	-0.014	0.012	0.021	0.000000	0.000000	-759.49	-1730.59
1	FID	ACIS-S-4	7.20	2393	0.040	0.021	0.015	0.035	0.000000	0.000000	2153.58	177.39
2	FID	ACIS-S-5	7.23	2392	-0.033	0.003	0.010	0.016	0.000000	0.000000	-1811.65	171.62
3	GUIDE	202899936	8.19	4785	-0.078	-0.191	0.059	0.096	258.328552	21.310381	1683.78	1765.08
4	GUIDE	202912688	9.39	4783	0.124	0.093	0.086	0.140	258.419322	21.995921	1517.79	-715.10
5	GUIDE	202916576	8.44	4785	-0.040	0.030	0.066	0.103	258.787559	21.564303	200.21	765.54
6	GUIDE	202917128	8.98	4784	0.007	-0.057	0.085	0.141	259.315633	21.212347	-1642.77	1924.76
7	GUIDE	202904992	9.45	4777	-0.011	0.132	0.118	0.191	259.271452	22.342593	-1246.23	-2127.17

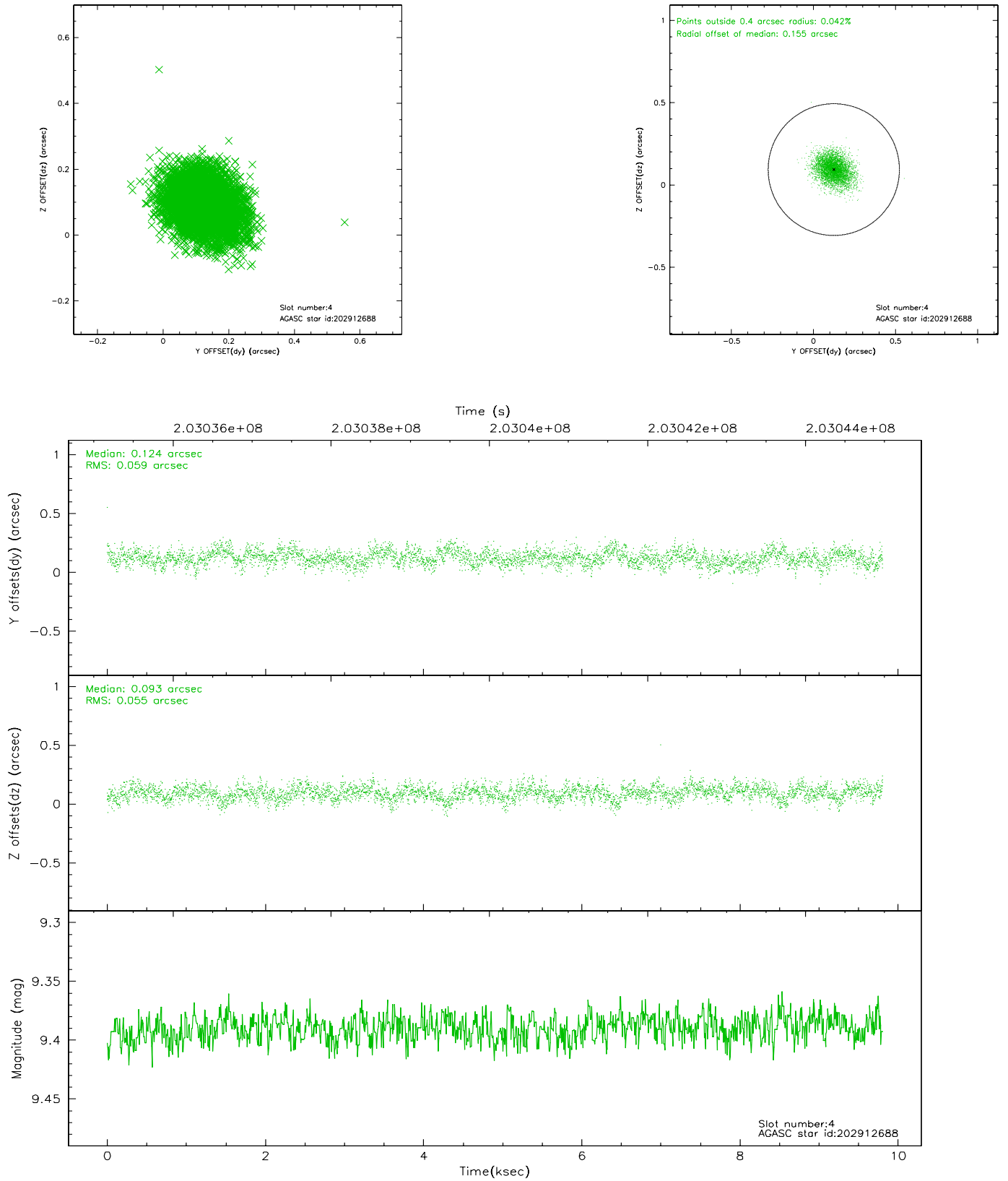


## 2.4 Star Slots

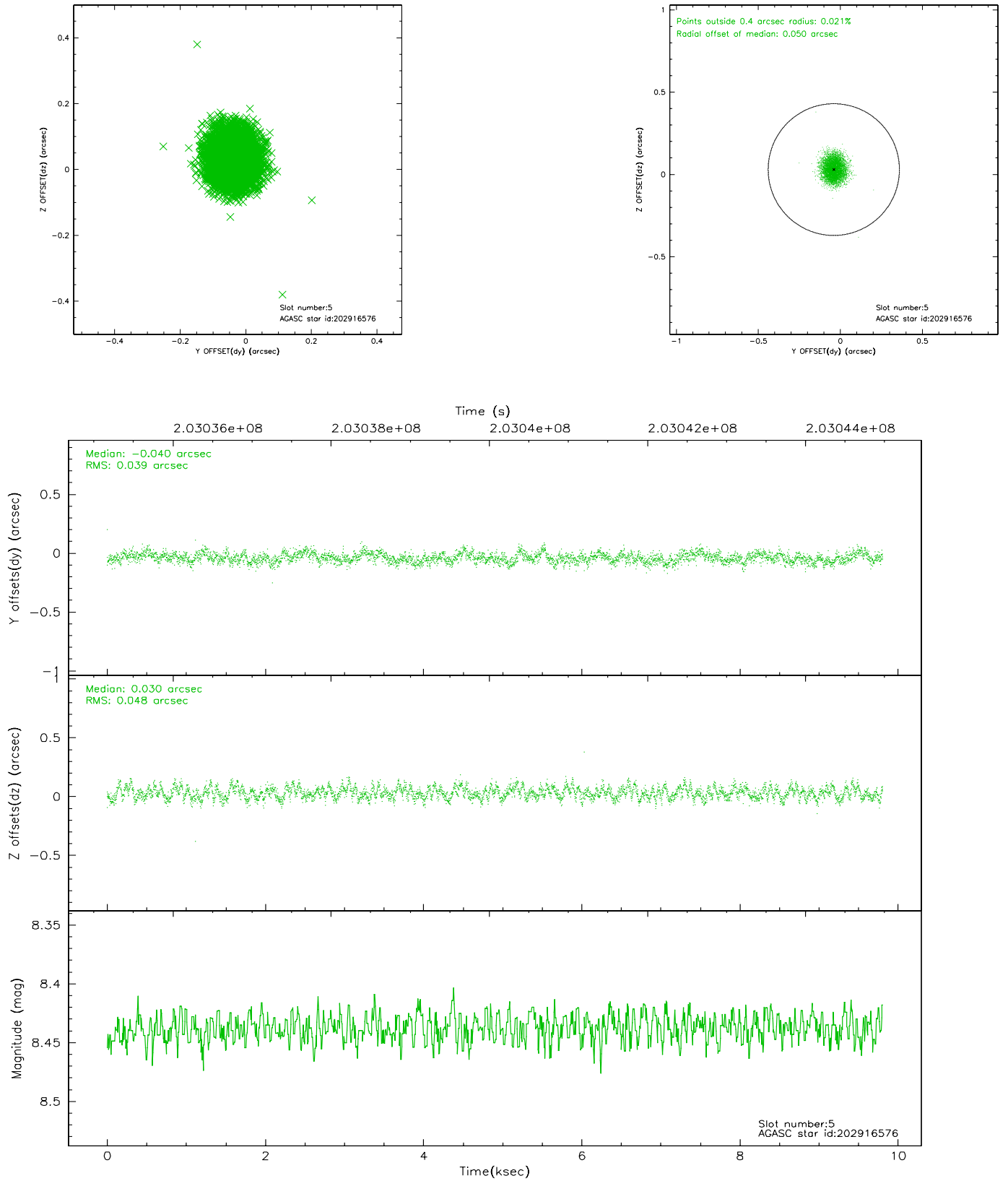
### 2.4.1 Slot 3



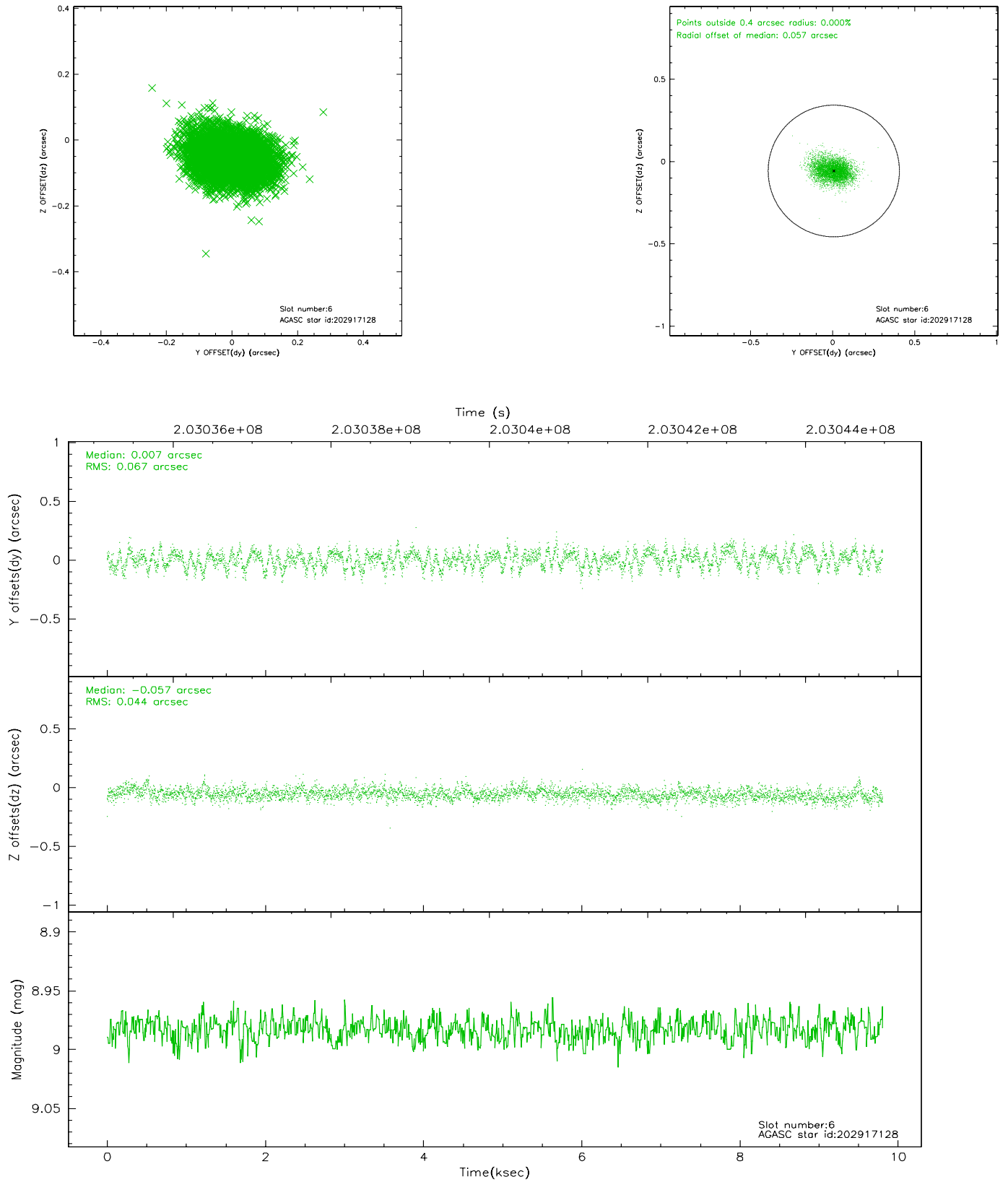
## 2.4.2 Slot 4



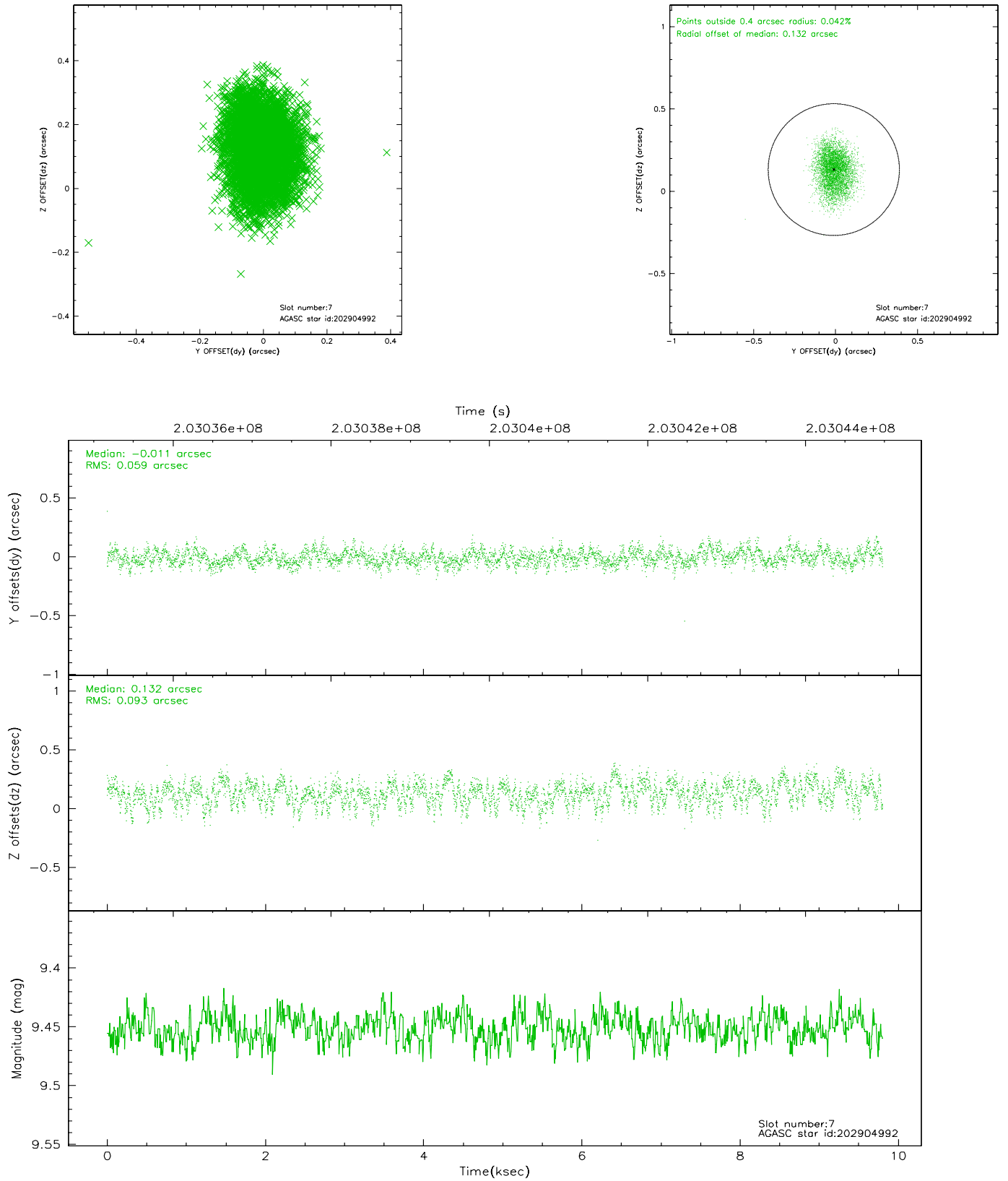
### 2.4.3 Slot 5



## 2.4.4 Slot 6

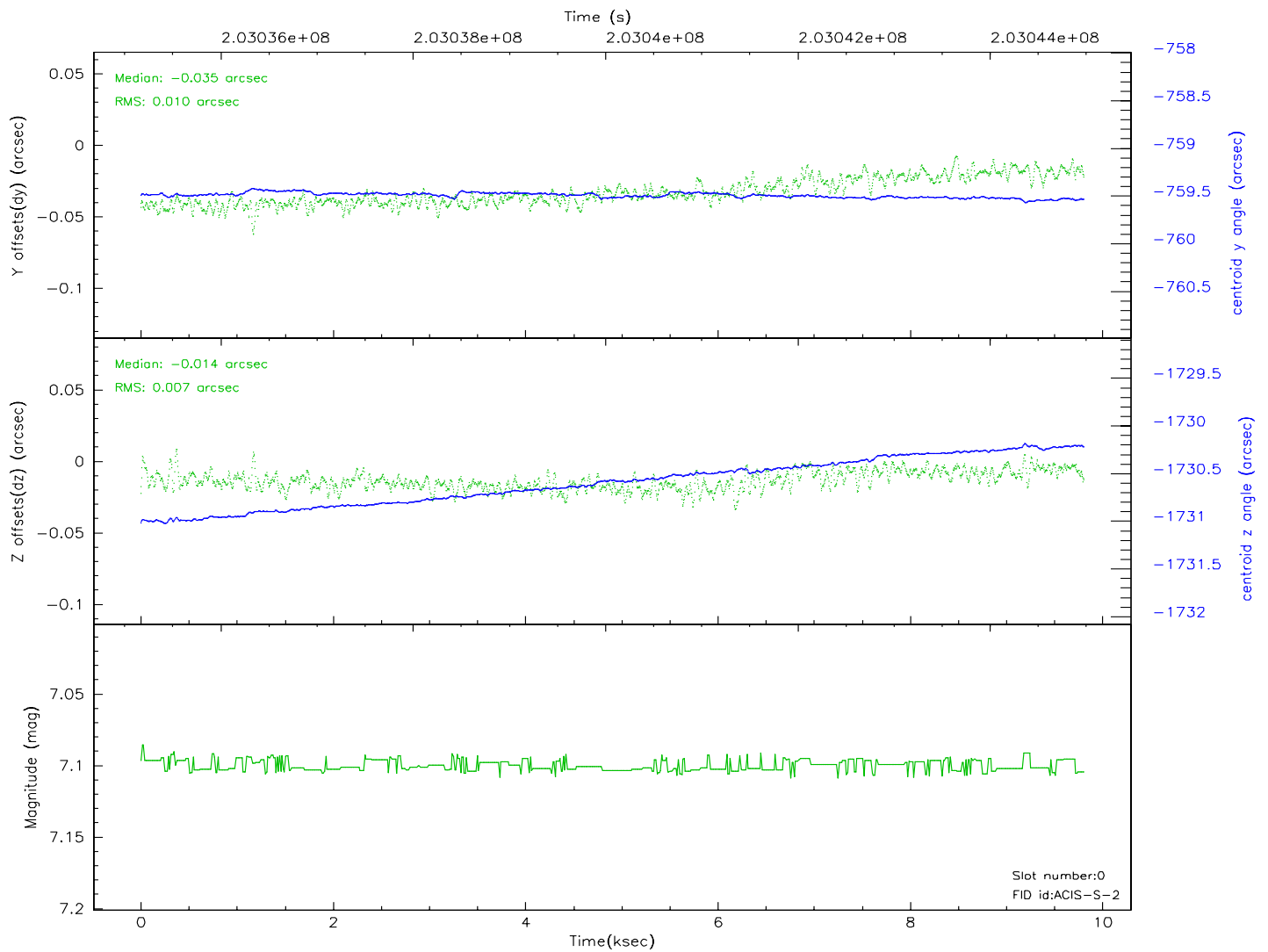
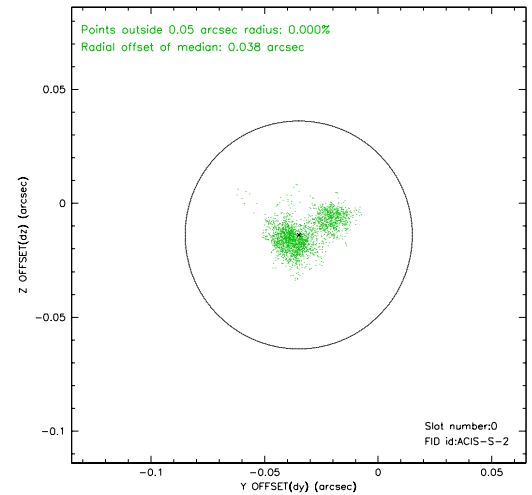
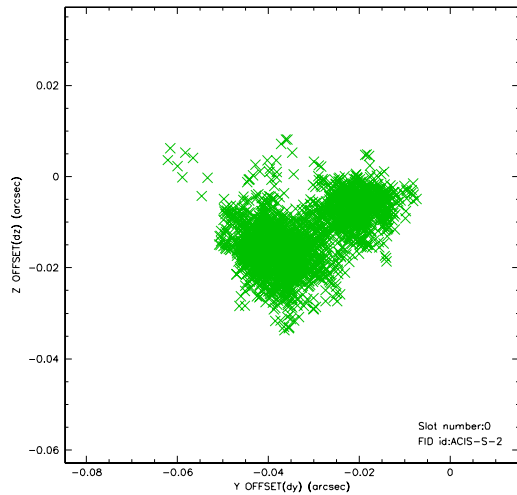


## 2.4.5 Slot 7

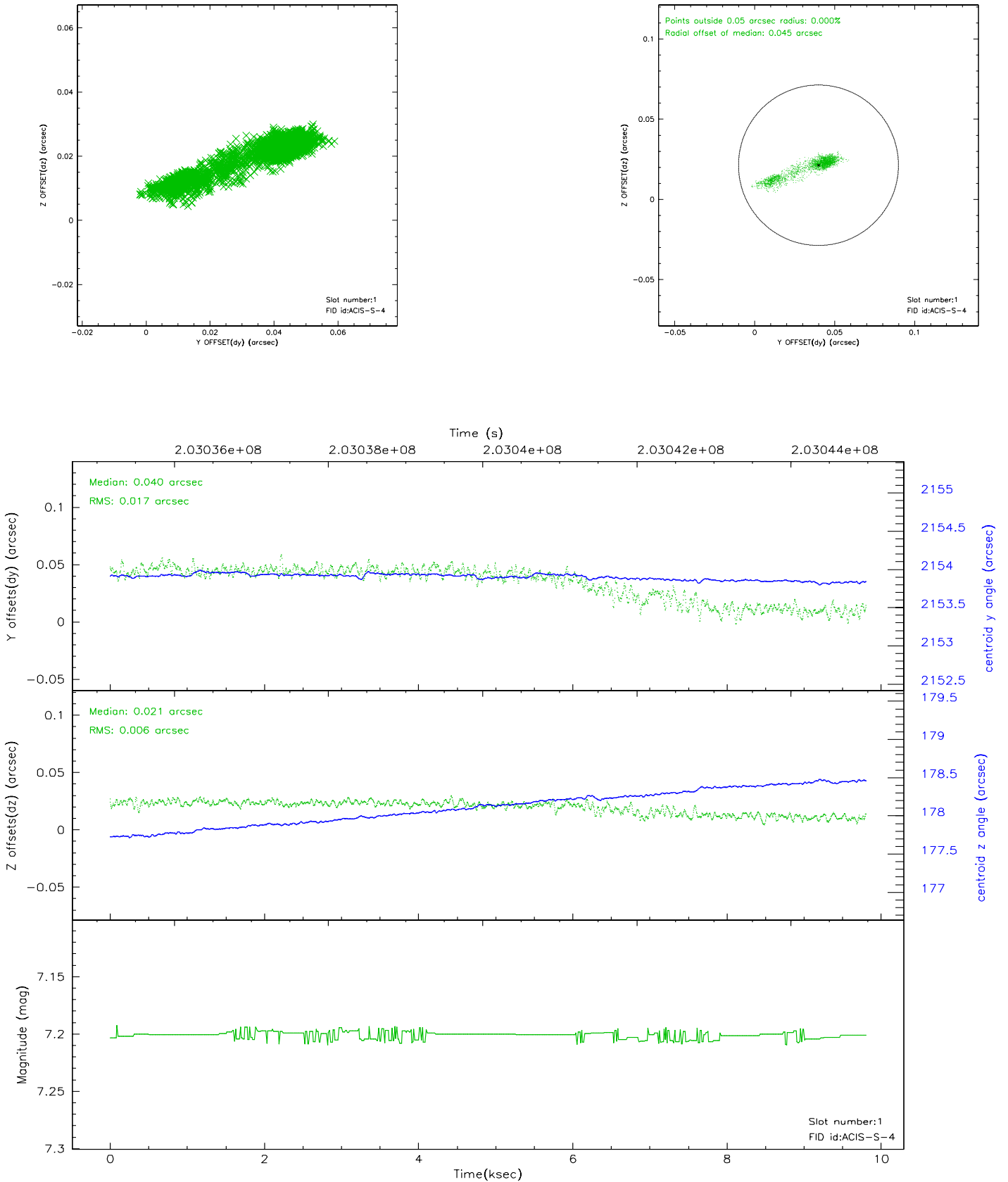


## 2.5 FID Slots

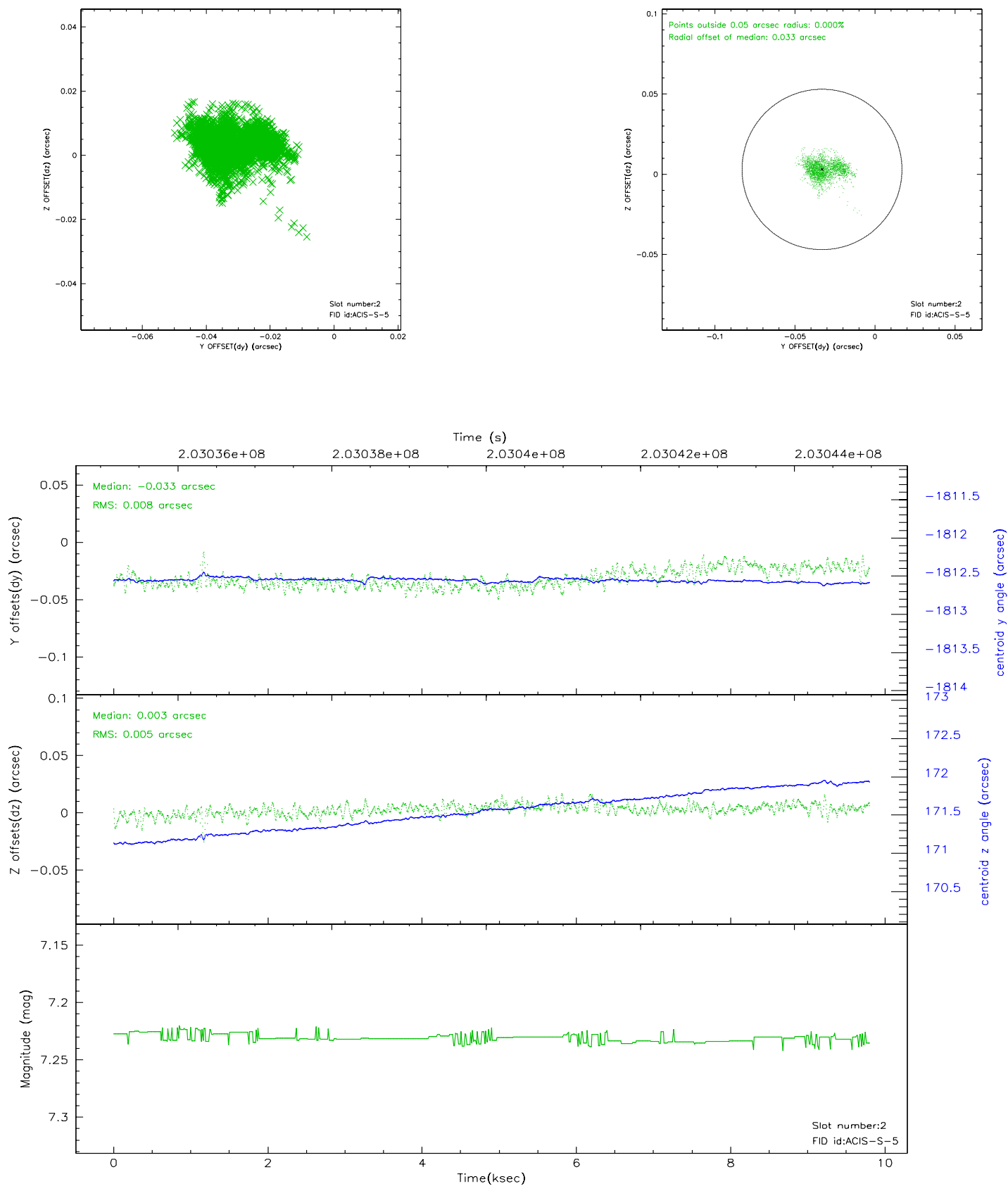
### 2.5.1 Slot 0



## 2.5.2 Slot 1



### 2.5.3 Slot 2





### 3 Point Sources

## A Summary

### A.1 Status

V&V Scientist	Jen Lauer
V&V Date (YYYY-MM-DD)	2006.05.01
V&V Edition	1
V&V Disposition and Status	OK
V&V Charge Time	9.804

### A.2 Comments

Roll preference met.