

V&V Reference Report

L2 ASCDS Version : 7.6.8

Observation 4795 - L2 Version 001
Chandra X-Ray Center

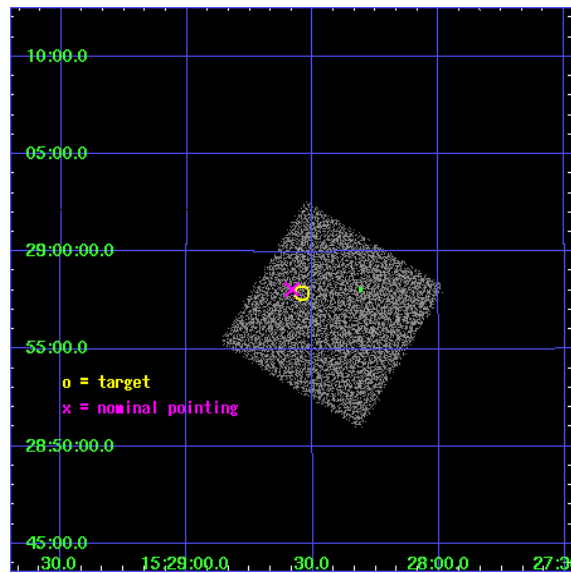
L2 Processing Date : Jun 23 2006

Contents

1	Front	2
2	OBI	3
2.1	OBI	3
2.1.1	Images	3
2.1.2	Bias	3
2.1.3	Parameters	4
2.1.4	Events	4
2.2	Compared Parameters	5
2.3	Aspect	6
2.4	Star Slots	9
2.4.1	Slot 3	9
2.4.2	Slot 4	10
2.4.3	Slot 5	11
2.4.4	Slot 6	12
2.4.5	Slot 7	13
2.5	FID Slots	14
2.5.1	Slot 0	14
2.5.2	Slot 1	15
2.5.3	Slot 2	16
3	Point Sources	17
A	Summary	18
A.1	Status	18
A.2	Comments	18

1 Front

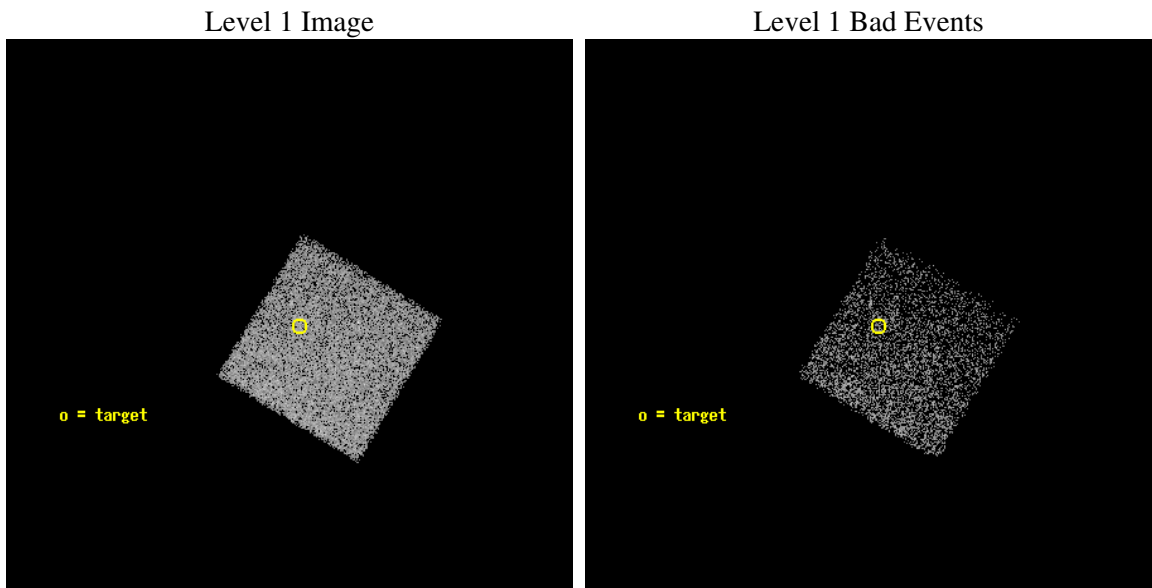
seq_num	700878
obs_id	4795
title	Anchoring the AGN X-ray Luminosity Function
observer	Dr. JOHN SALZER
object	F1525-1892
dtcycle	0
cycle	P
ra_targ	232.135417
dec_targ	28.964194
ra_nom	232.14566708926
dec_nom	28.967688064118
roll_nom	31.167490010834
revision	2
ontime	4356.0
livetime	4297.2141109621
ontime7	4356.0
l2events	13436



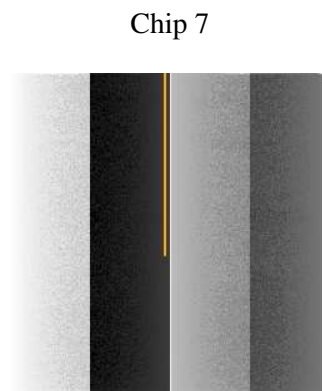
2 OBI

2.1 OBI

2.1.1 Images



2.1.2 Bias



2.1.3 Parameters

obi_num	0
ascdsver	7.6.8
caldbver	3.2.2
date	2006-06-23T14:24:41
revision	2

sched_exp_time	4000.000000
ontime	4646.6524819732
ontime7	4646.6524819732
l1events	37194

2.1.4 Events

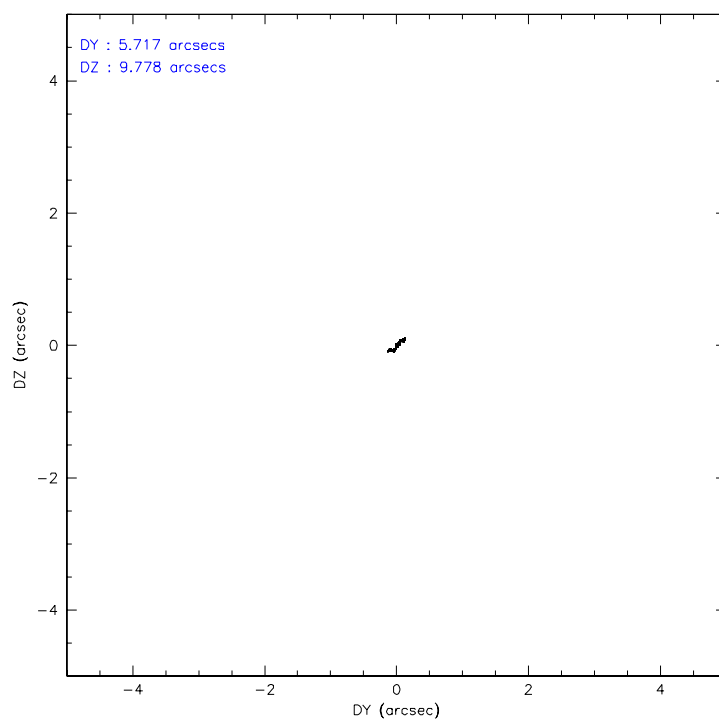
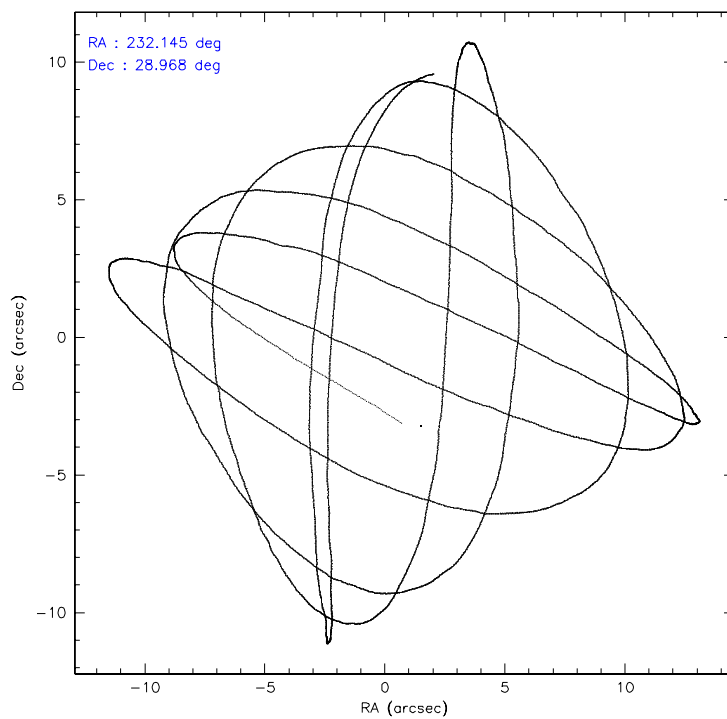
	ccd 7
level 1 events	37194
rejected events	23436
rejected %	63%

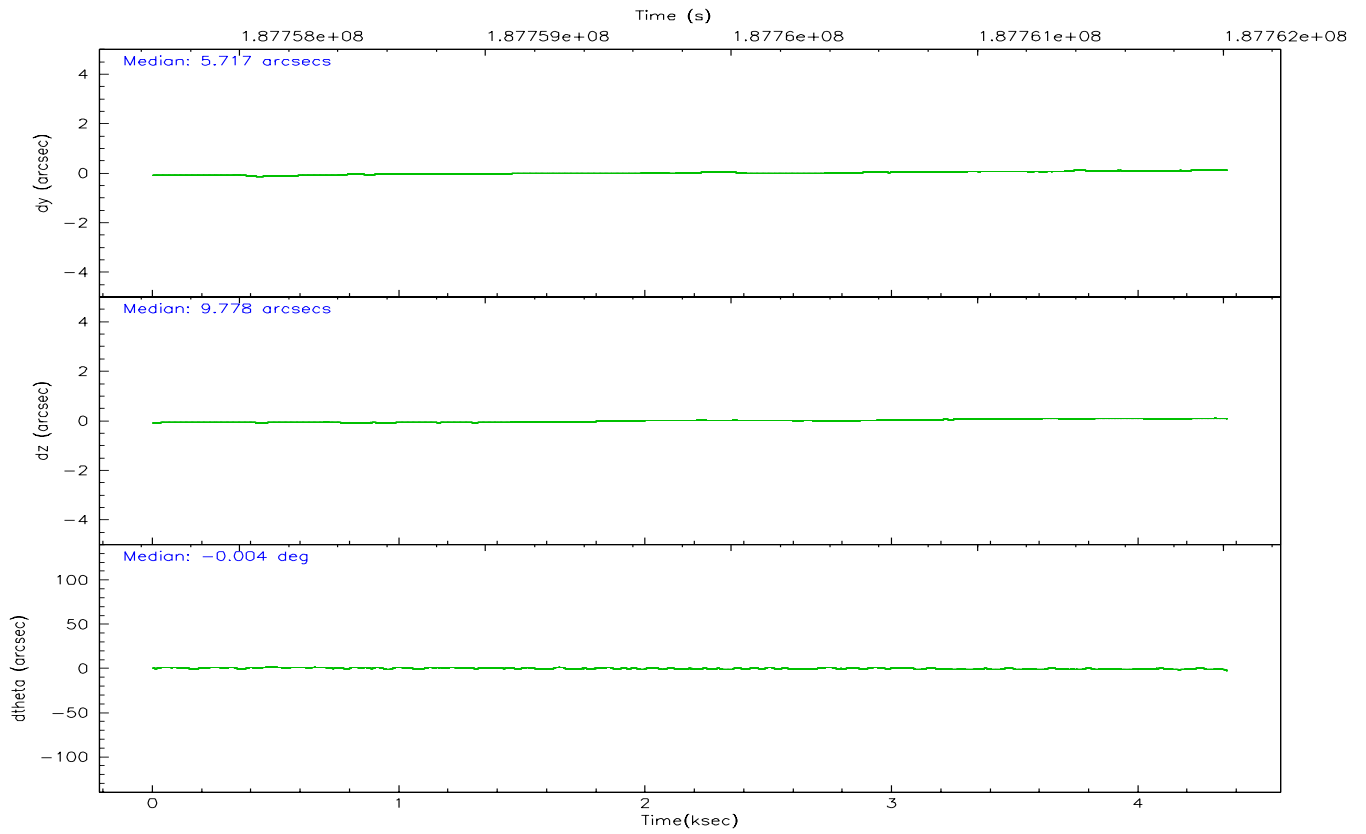
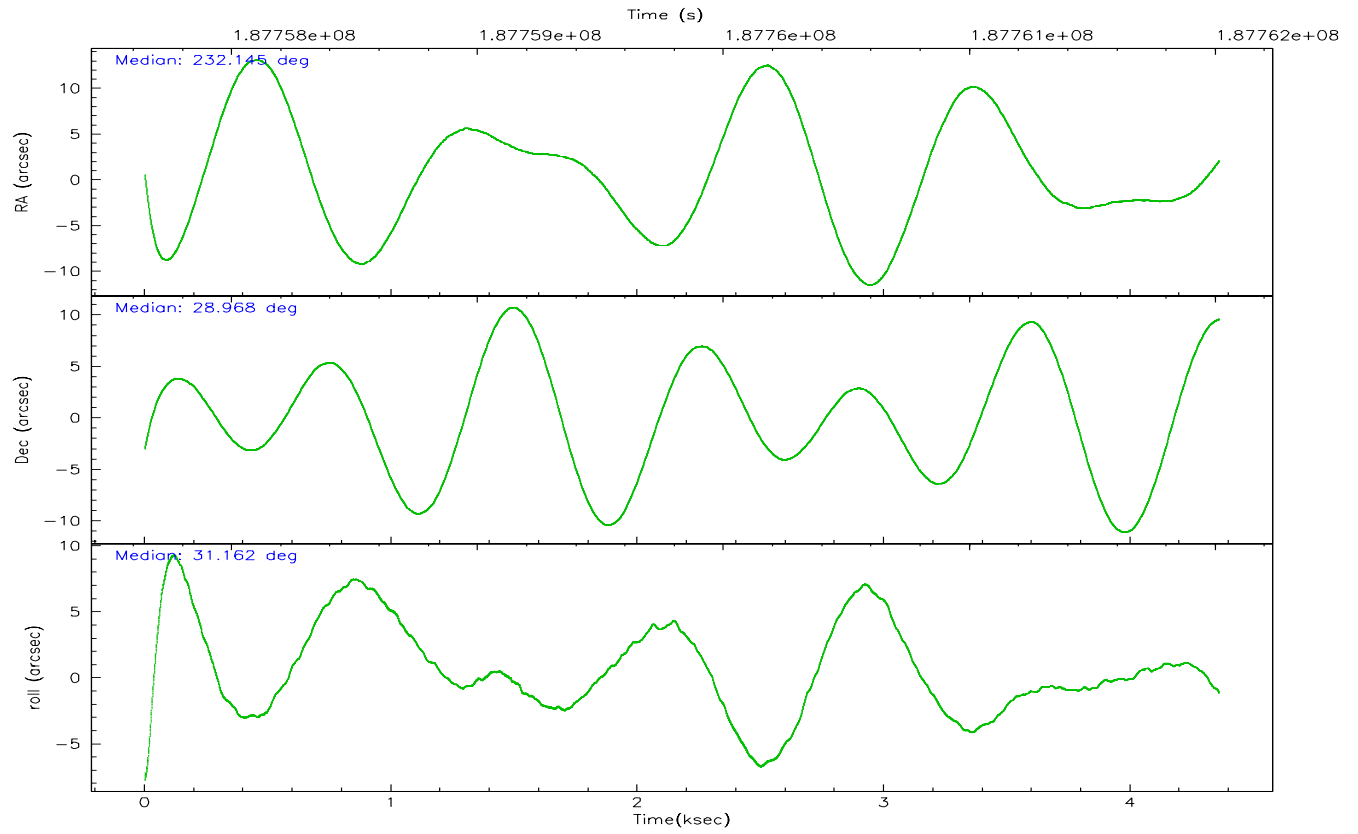
	ccd 7
grade 0 events	1007
	2%
grade 1 events	12
	0%
grade 2 events	3476
	9%
grade 3 events	775
	2%
grade 4 events	715
	1%
grade 5 events	2342
	6%
grade 6 events	8634
	23%
grade 7 events	20233
	54%

2.2 Compared Parameters

Parameter	Planned	Actual	Parameter	Planned	Actual
Instrument	ACIS	ACIS	Obspar format version number	6	6
Detector	ACIS-7	ACIS-7	Obspar file type	PREDICTED	ACTUAL
Grating	NONE	NONE	Obspar update status	NONE	UPDATED
Data mode	FAINT	FAINT	On-chip summing requested	N	N
Observation mode	POINTING	POINTING	Subarray requested	NONE	NONE
Pointing RA	232.131098	232.1456670892618	Alternating exposures requested	N	N
Pointing Dec	28.943636	28.96768806411768	Primary exposure time	0.000000	3
Pointing Roll	31.017958	31.1674900108343			
SIM focus pos (mm)	-0.684267	-0.6828225247311905			
SIM defocus (mm)	0	0.001444936568705701			
SIM translation stage pos (mm)	-190.132523	-190.1425803651734			
SIM translation stage offset (mm)	0	0.01005778216563158			
Observation start time	187758012.184000	187756961.49327			
Observation start date	2003-12-14T02:59:08	2003-12-14T02:42:41			
Observation end time	187762012.184000	187762744.54352			
Observation end date	2003-12-14T04:05:48	2003-12-14T04:19:04			
Read mode	TIMED	TIMED			

2.3 Aspect



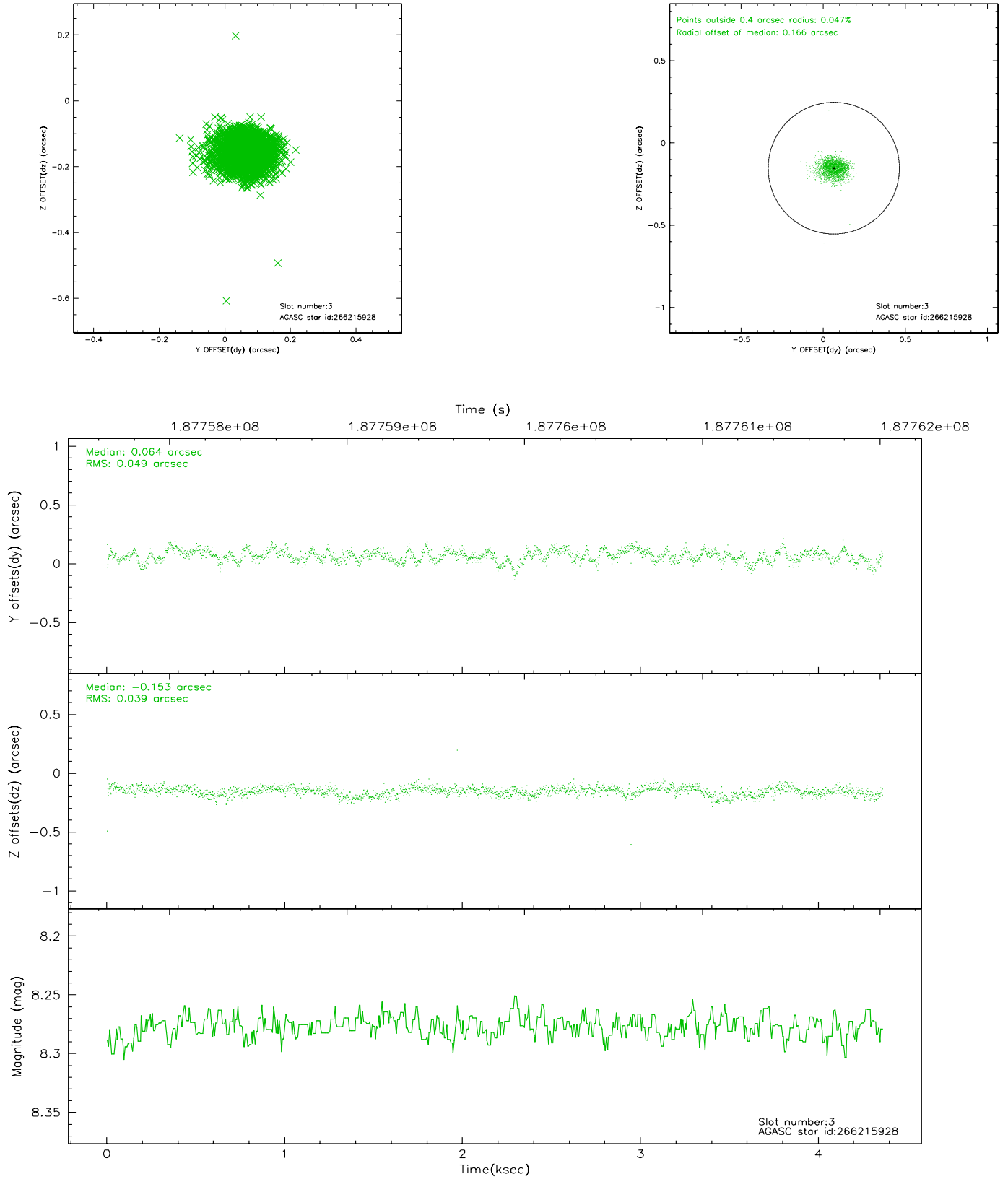


Slot Statistics

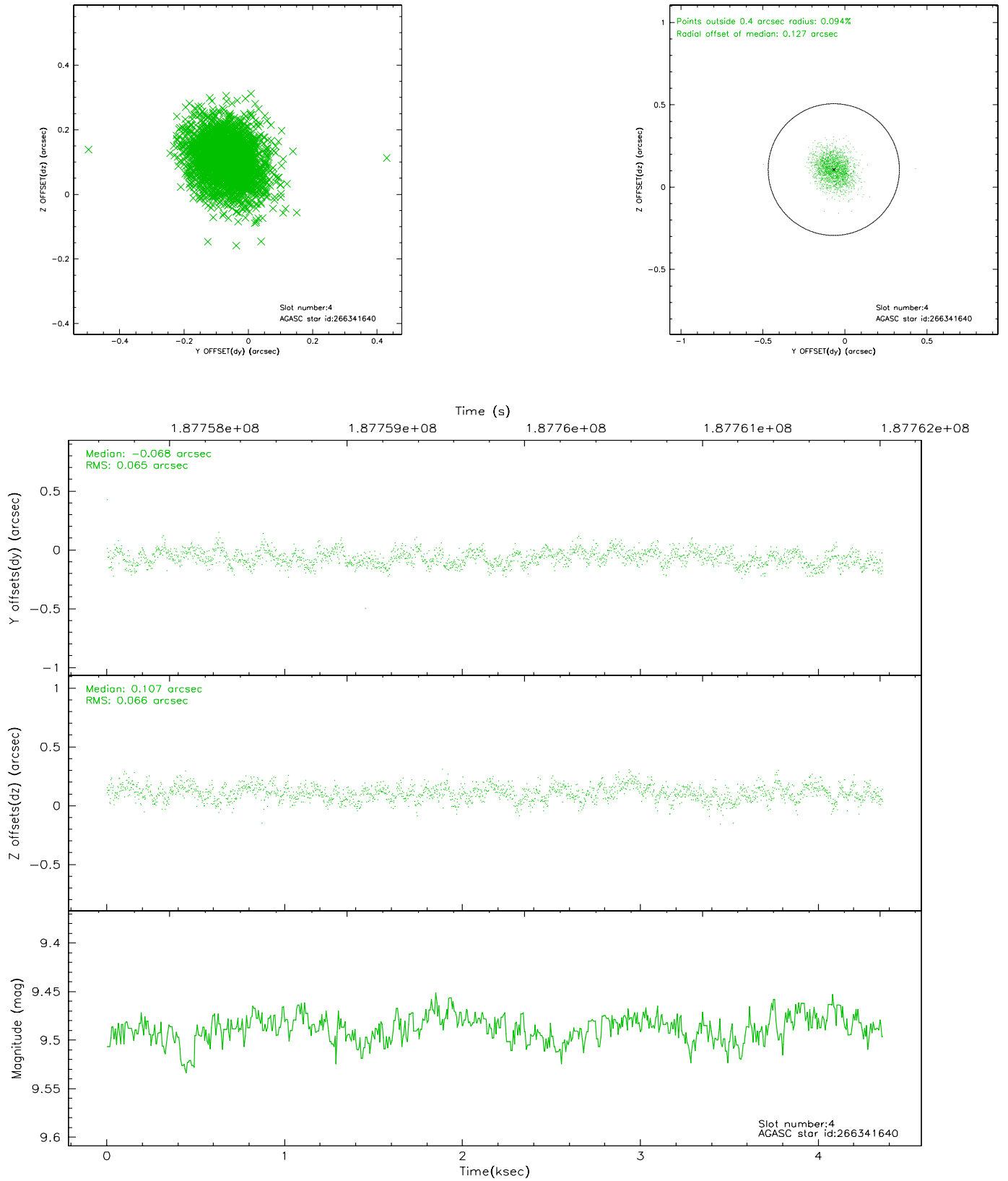
slot	status	id	mag	n_pts	med_dy	med_dz	dr1	dr2	ra	dec	mean_y	mean_z
0	FID	ACIS-S-2	7.10	1064	-0.026	-0.010	0.006	0.011	0.000000	0.000000	-758.47	-1730.97
1	FID	ACIS-S-5	7.23	1063	-0.030	-0.015	0.007	0.012	0.000000	0.000000	-1812.22	169.54
2	FID	ACIS-S-6	7.34	1064	0.030	0.033	0.006	0.011	0.000000	0.000000	401.67	815.09
3	GUIDE	266215928	8.28	2128	0.064	-0.153	0.065	0.105	231.261301	29.146197	-1962.53	2042.56
4	GUIDE	266341640	9.49	2128	-0.068	0.107	0.097	0.158	232.628690	28.610232	730.70	-1835.51
5	GUIDE	266343832	9.26	2126	-0.075	-0.041	0.093	0.150	232.610121	29.317678	1984.71	381.09
6	GUIDE	266344664	9.68	2126	0.074	0.029	0.102	0.168	232.455750	28.949096	888.72	-508.50
7	GUIDE	266350832	10.09	2126	-0.004	0.063	0.149	0.231	231.840257	28.171464	-2221.97	-1906.16

2.4 Star Slots

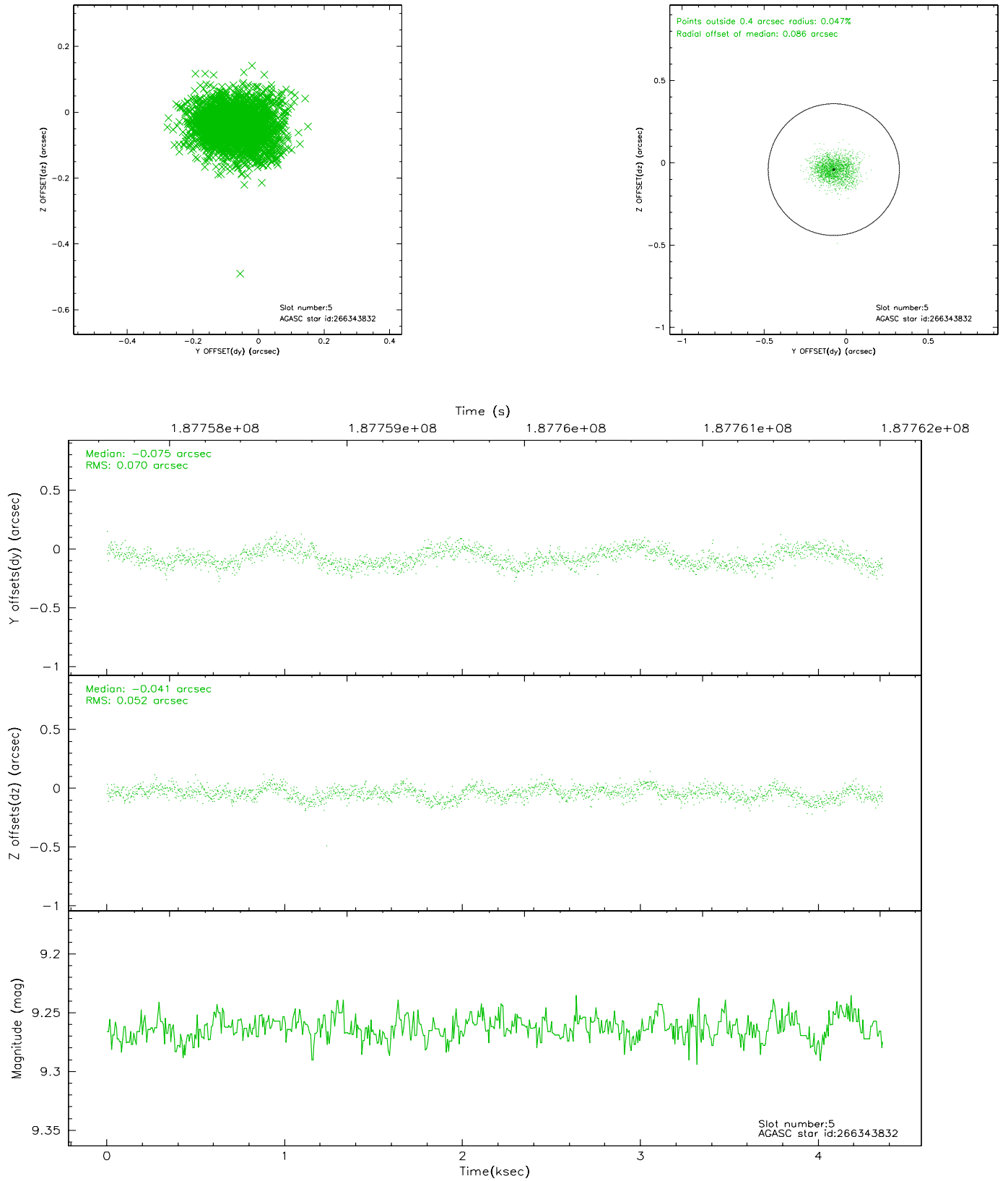
2.4.1 Slot 3



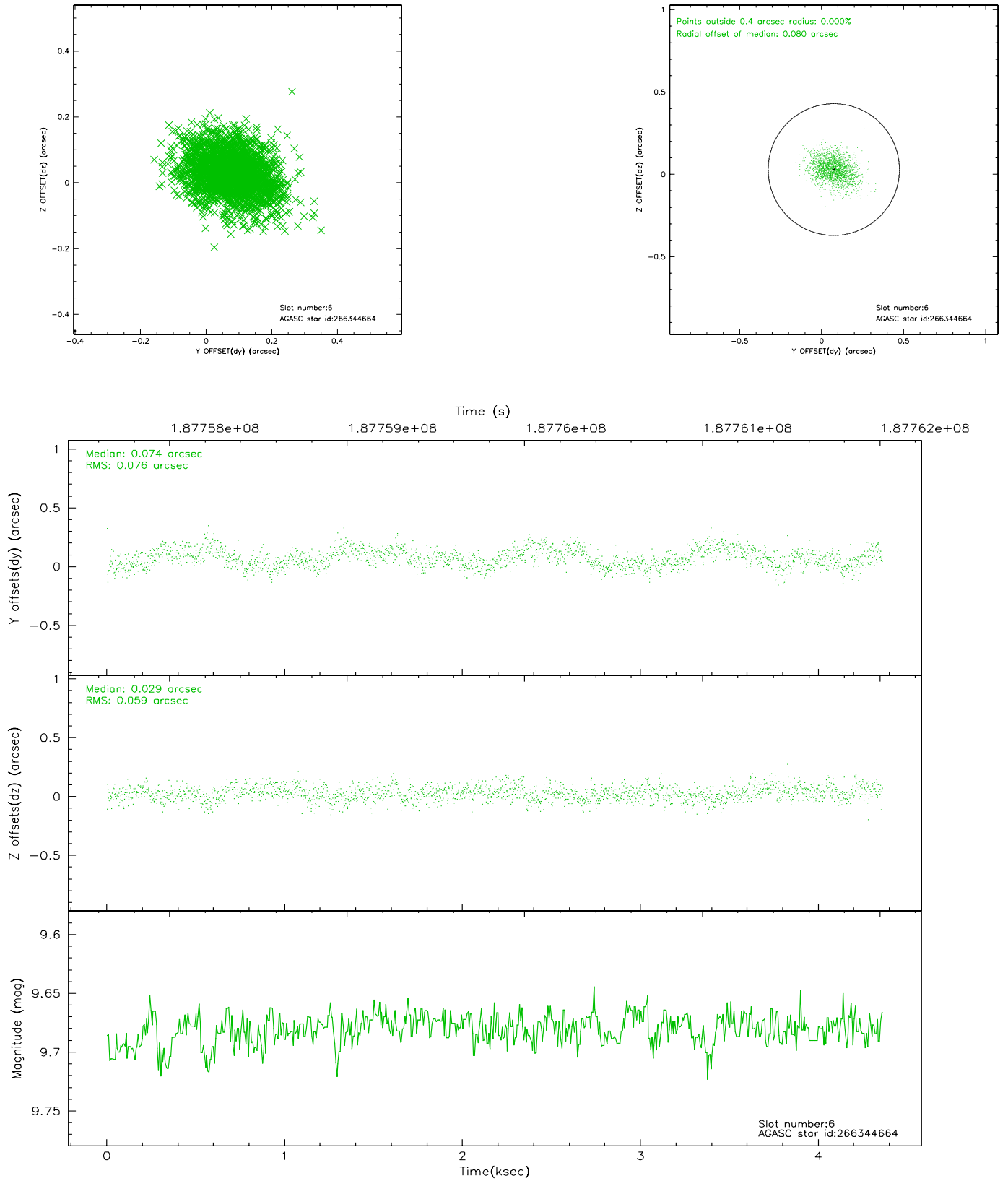
2.4.2 Slot 4



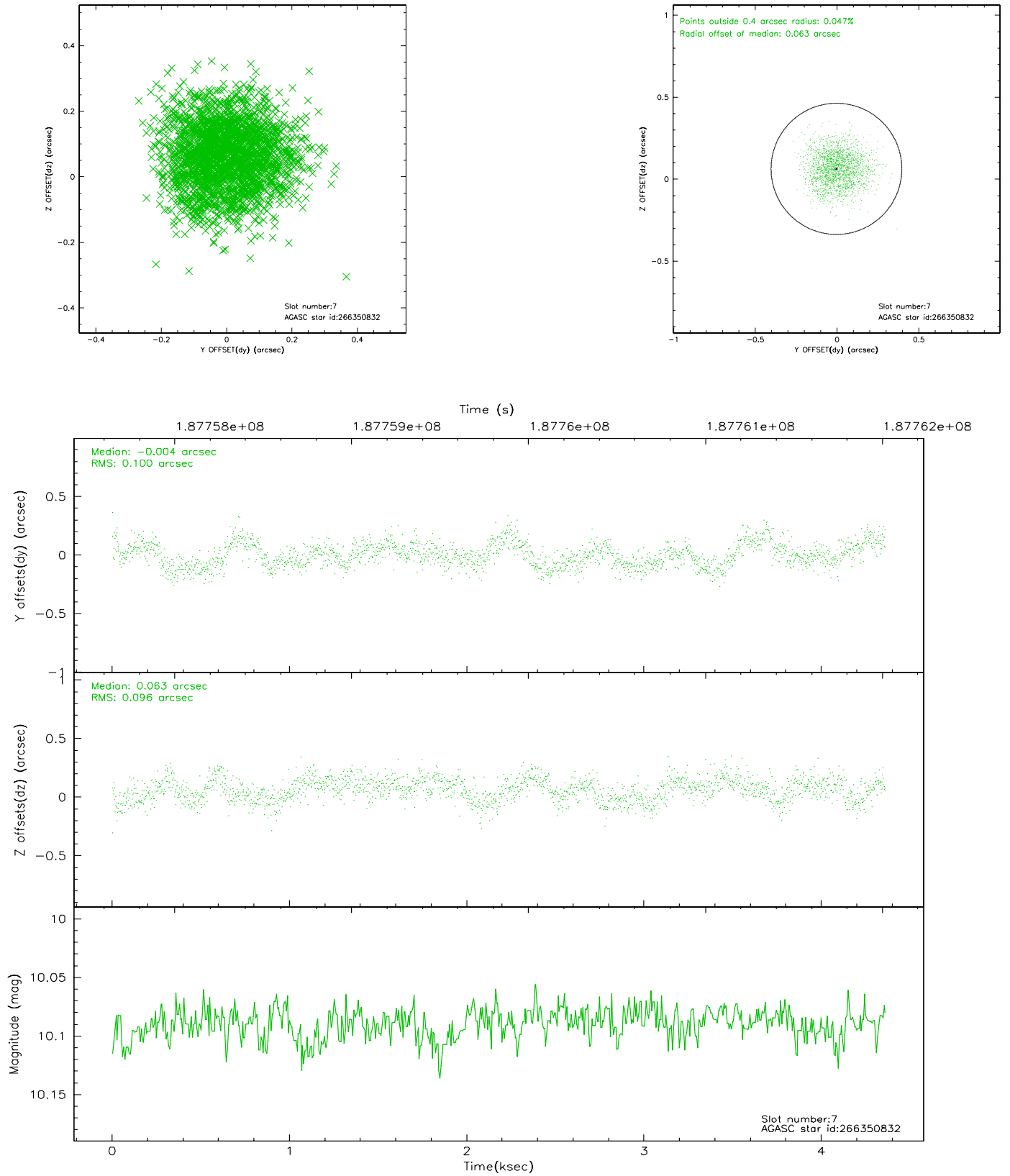
2.4.3 Slot 5



2.4.4 Slot 6

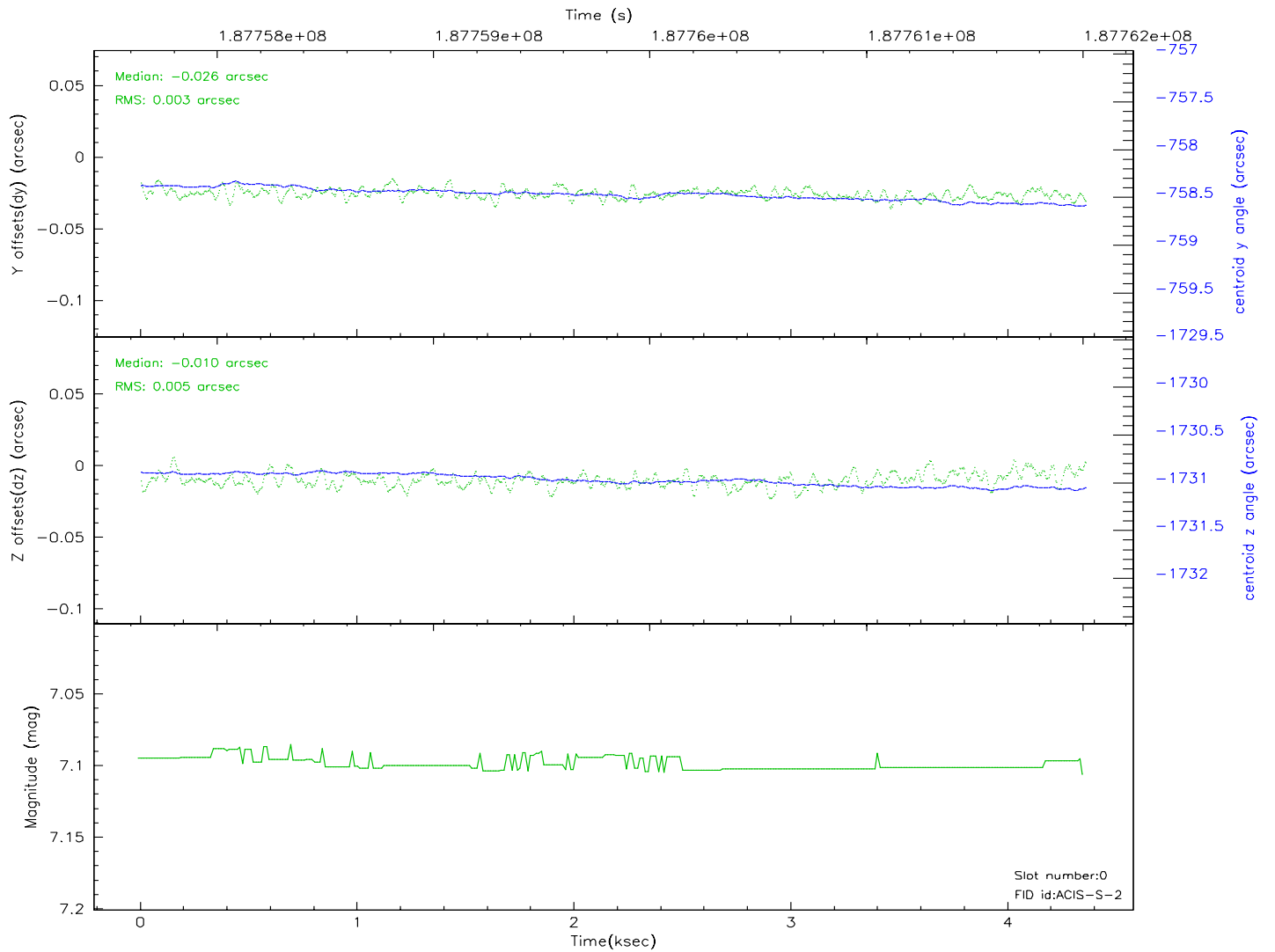
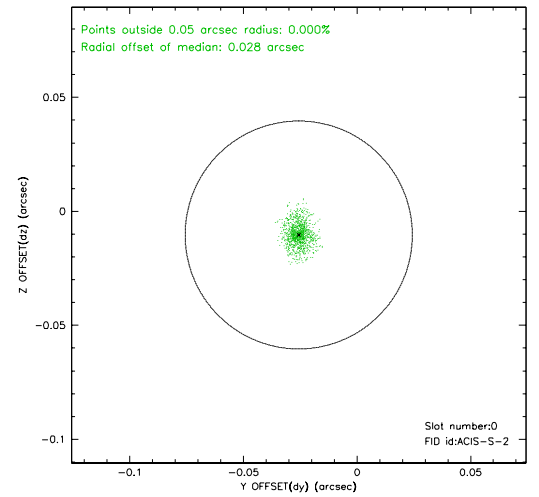
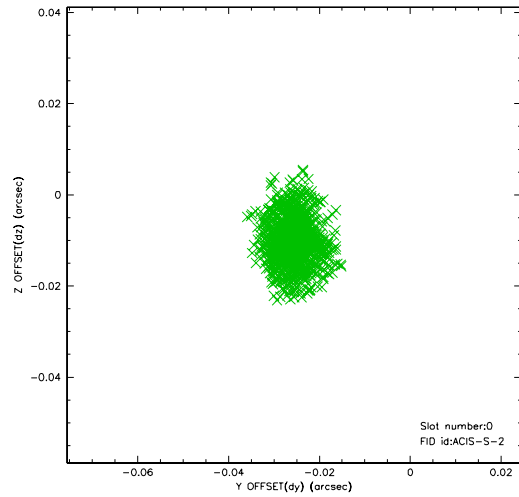


2.4.5 Slot 7

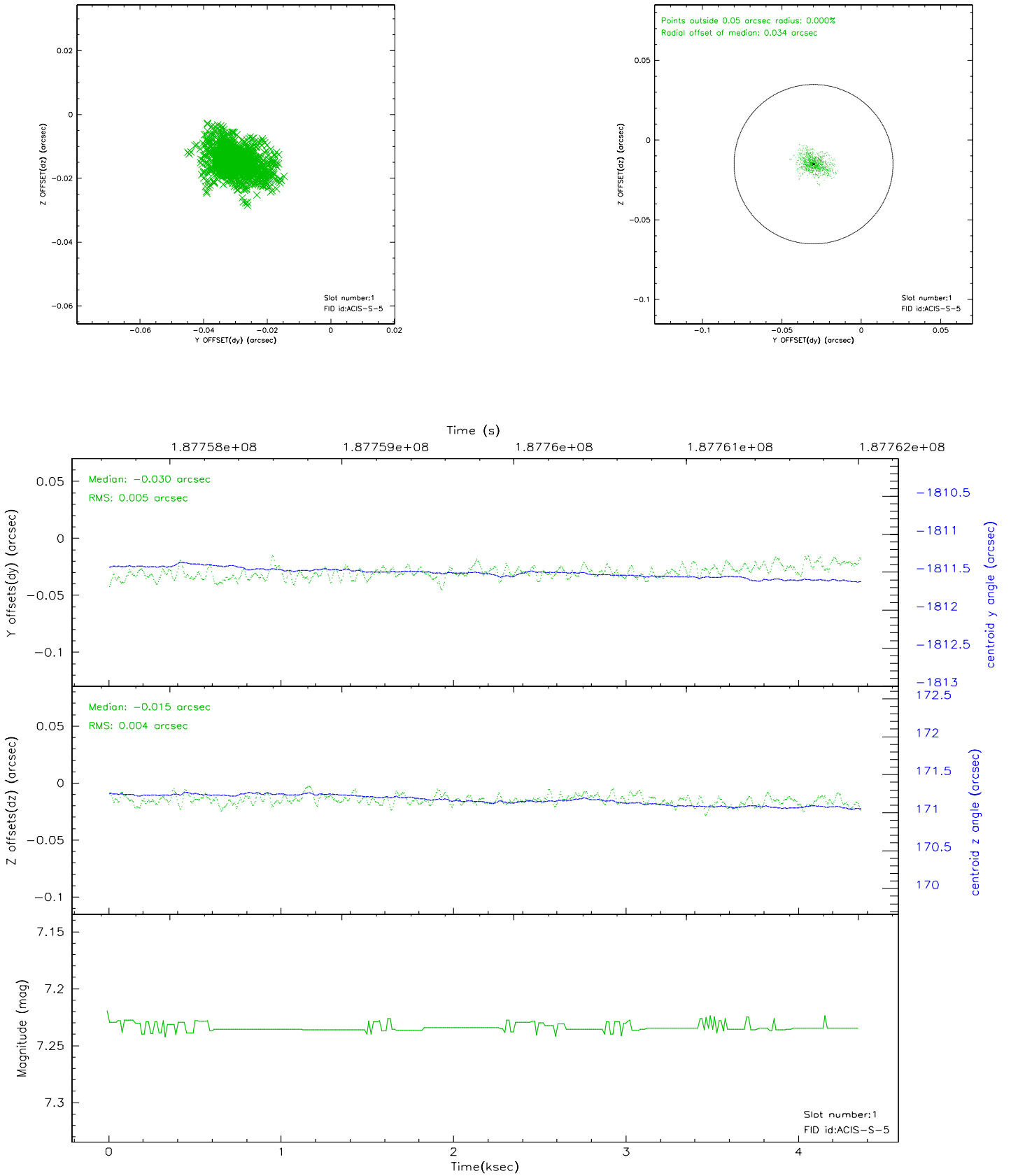


2.5 FID Slots

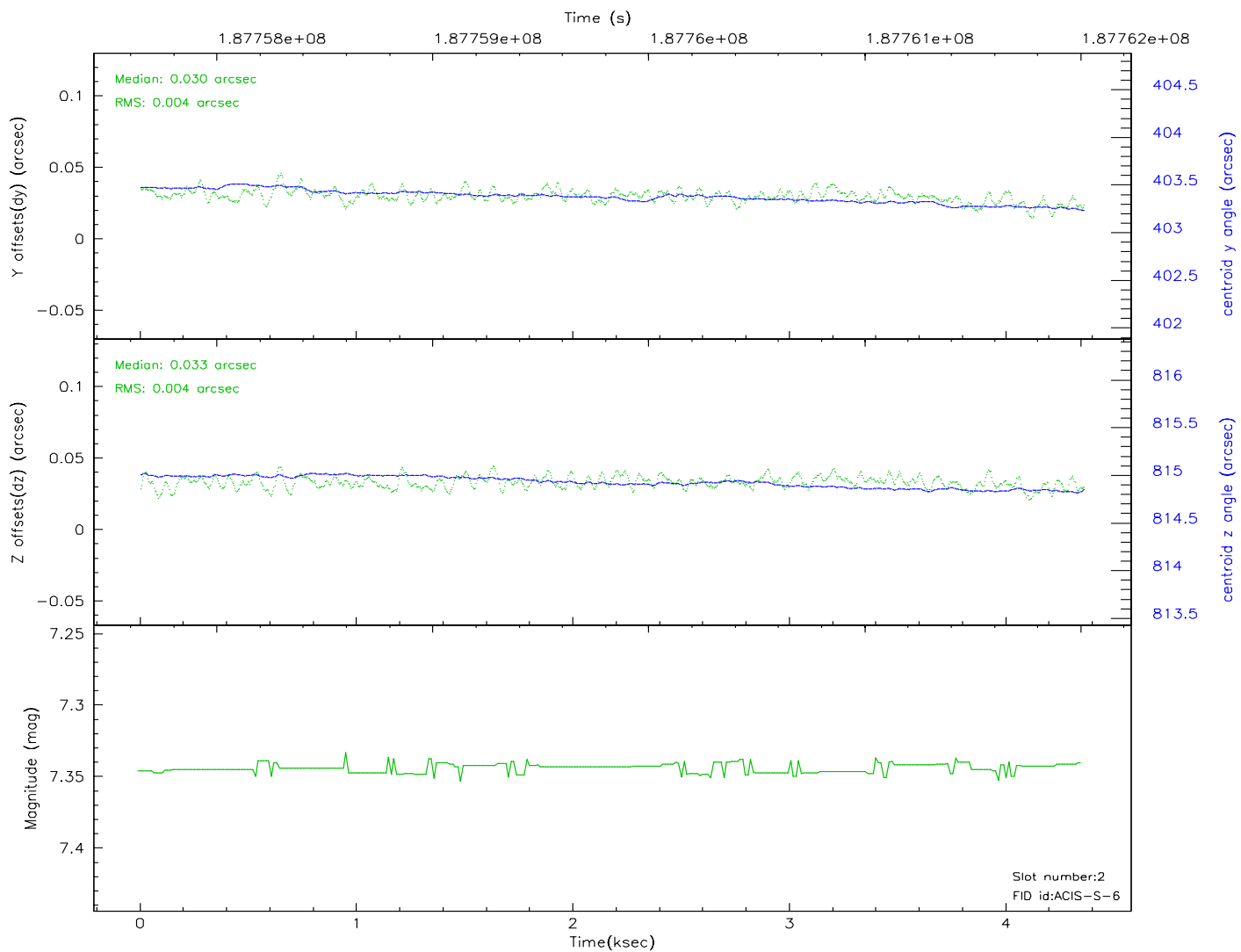
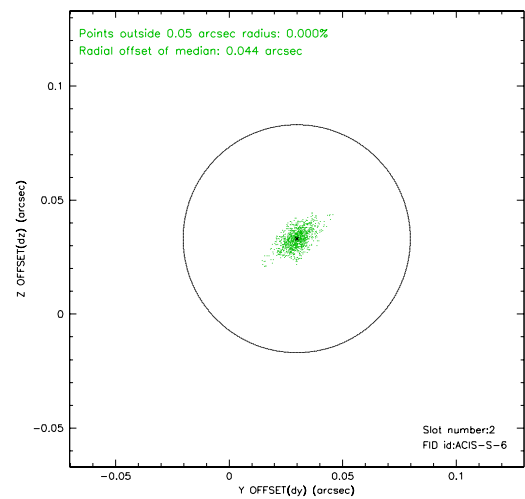
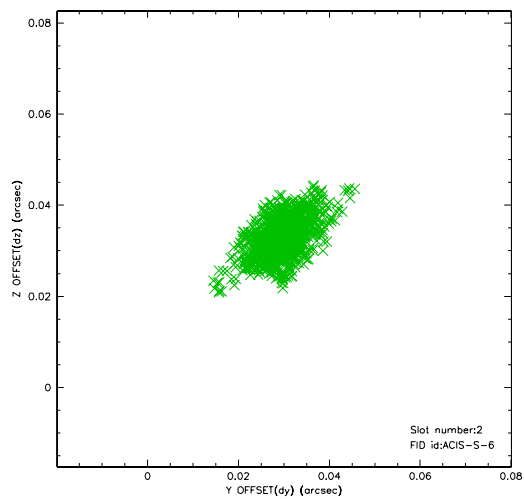
2.5.1 Slot 0



2.5.2 Slot 1



2.5.3 Slot 2



3 Point Sources

3.59 arcmin



A Summary

A.1 Status

V&V Scientist	Jen Lauer
V&V Date (YYYY-MM-DD)	2006.06.23
V&V Edition	1
V&V Disposition and Status	OK
V&V Charge Time	4.349

A.2 Comments