

V&V Reference Report

L2 ASCDS Version : 7.6.7.2

Observation 4765 - L2 Version 001
Chandra X-Ray Center

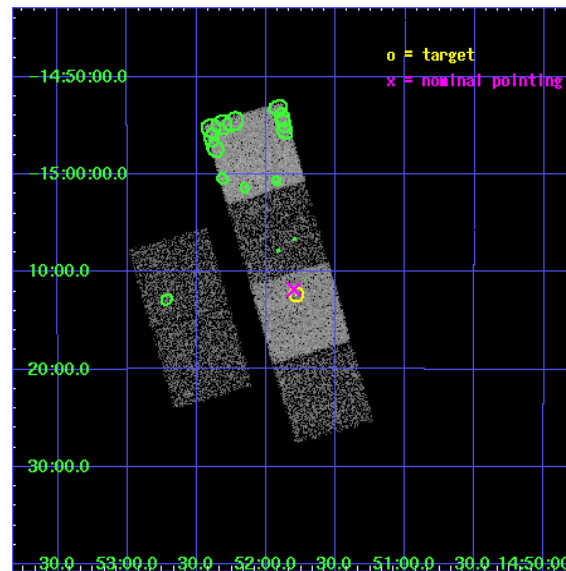
L2 Processing Date : May 31 2006

Contents

1	Front	2
2	OBI	3
2.1	OBI	3
2.1.1	Images	3
2.1.2	Bias	3
2.1.3	Parameters	4
2.1.4	Events	4
2.2	Compared Parameters	5
2.3	Aspect	6
2.4	Star Slots	9
2.4.1	Slot 3	9
2.4.2	Slot 4	10
2.4.3	Slot 5	11
2.4.4	Slot 6	12
2.4.5	Slot 7	13
2.5	FID Slots	14
2.5.1	Slot 0	14
2.5.2	Slot 1	15
2.5.3	Slot 2	16
3	Point Sources	17
A	Summary	18
A.1	Status	18
A.2	Comments	18

1 Front

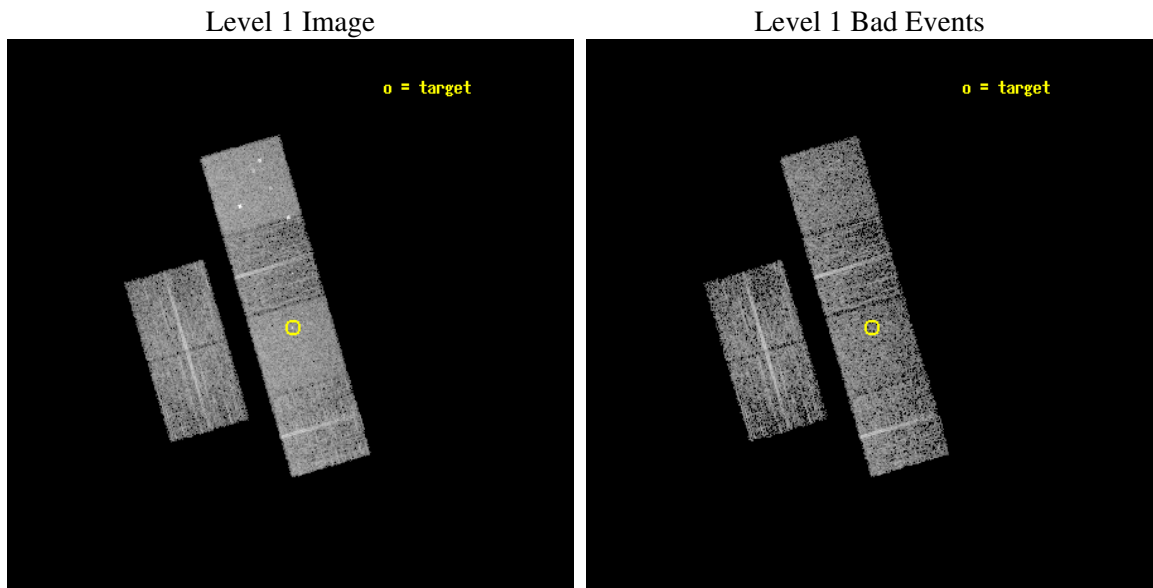
seq_num	700848
obs_id	4765
title	A Chandra Survey of Luminous, Radio-Loud Quasars at High Redshift
observer	Professor Gordon Garmire
object	PMN J1451-1512
dtcycle	0
cycle	P
ra_targ	222.945833
dec_targ	-15.205528
ra_nom	222.95017680843
dec_nom	-15.196920312887
roll_nom	73.702452792859
revision	2
ontime	4143.9999845624
livetime	4091.5261615406
ontime2	4143.9999845624
ontime3	4143.9999845624
ontime5	4143.9999845624
ontime6	4143.9999845624
ontime7	4143.9999845624
ontime8	4143.9999845624
l2events	43085



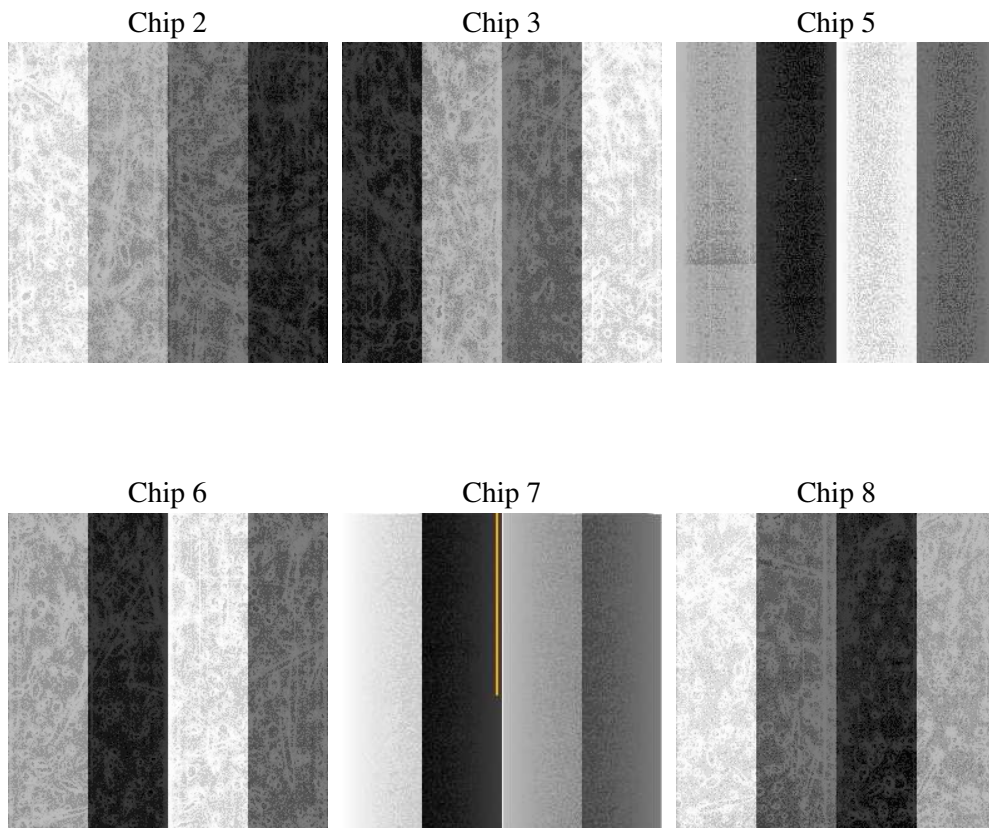
2 OBI

2.1 OBI

2.1.1 Images



2.1.2 Bias



2.1.3 Parameters

obi_num	0
ascdsver	7.6.7.2
caldsver	3.2.2
date	2006-05-31T07:19:39
revision	2

sched_exp_time	4000.000000
ontime	4867.9835934341
ontime2	4864.7426331341
ontime3	4867.9835934341
ontime5	4867.9835934341
ontime6	4867.9835934341
ontime7	4867.9835934341
ontime8	4867.9835934341
l1events	228613

2.1.4 Events

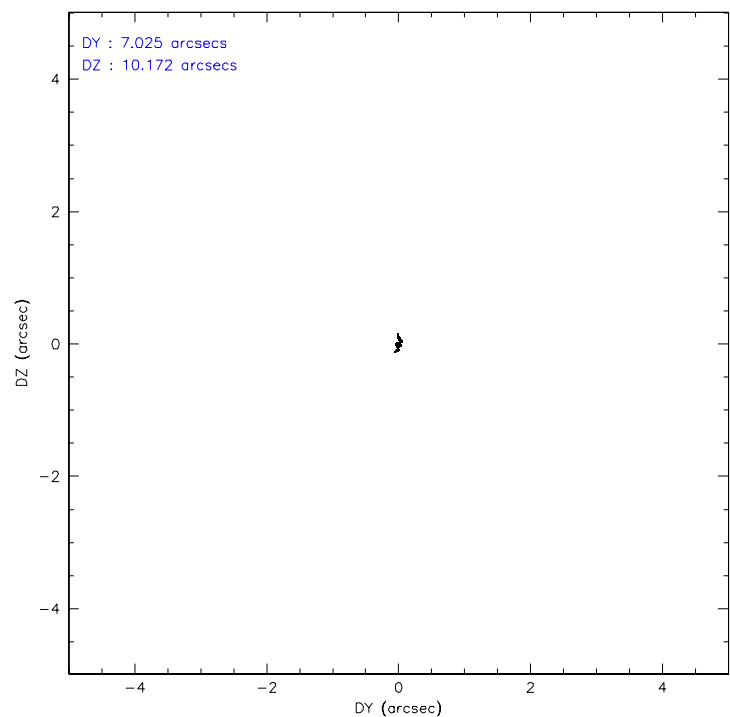
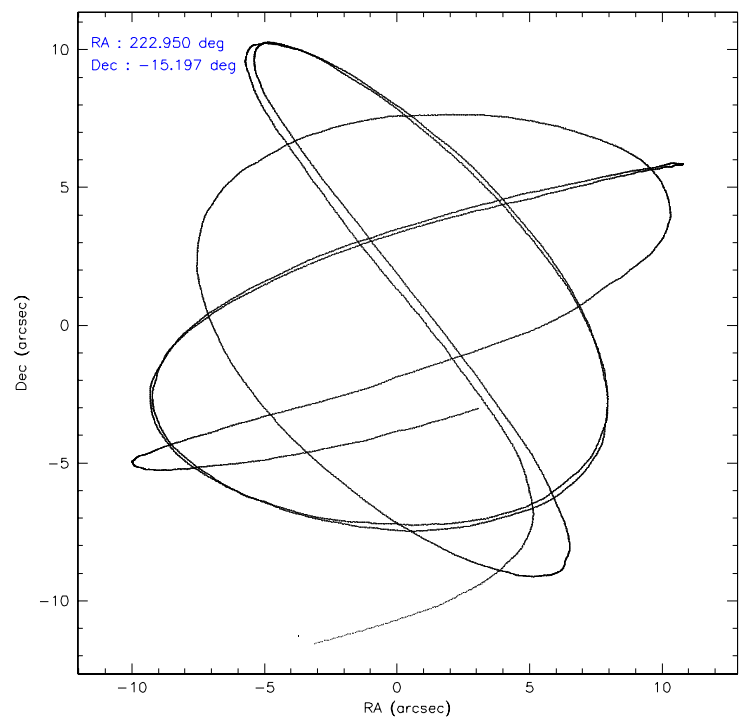
	ccd 2	ccd 3	ccd 5	ccd 6	ccd 7	ccd 8
level 1 events	32680	31377	49258	31287	43095	40916
rejected events	29284	28195	30040	27711	28950	33258
rejected %	89%	89%	60%	88%	67%	81%

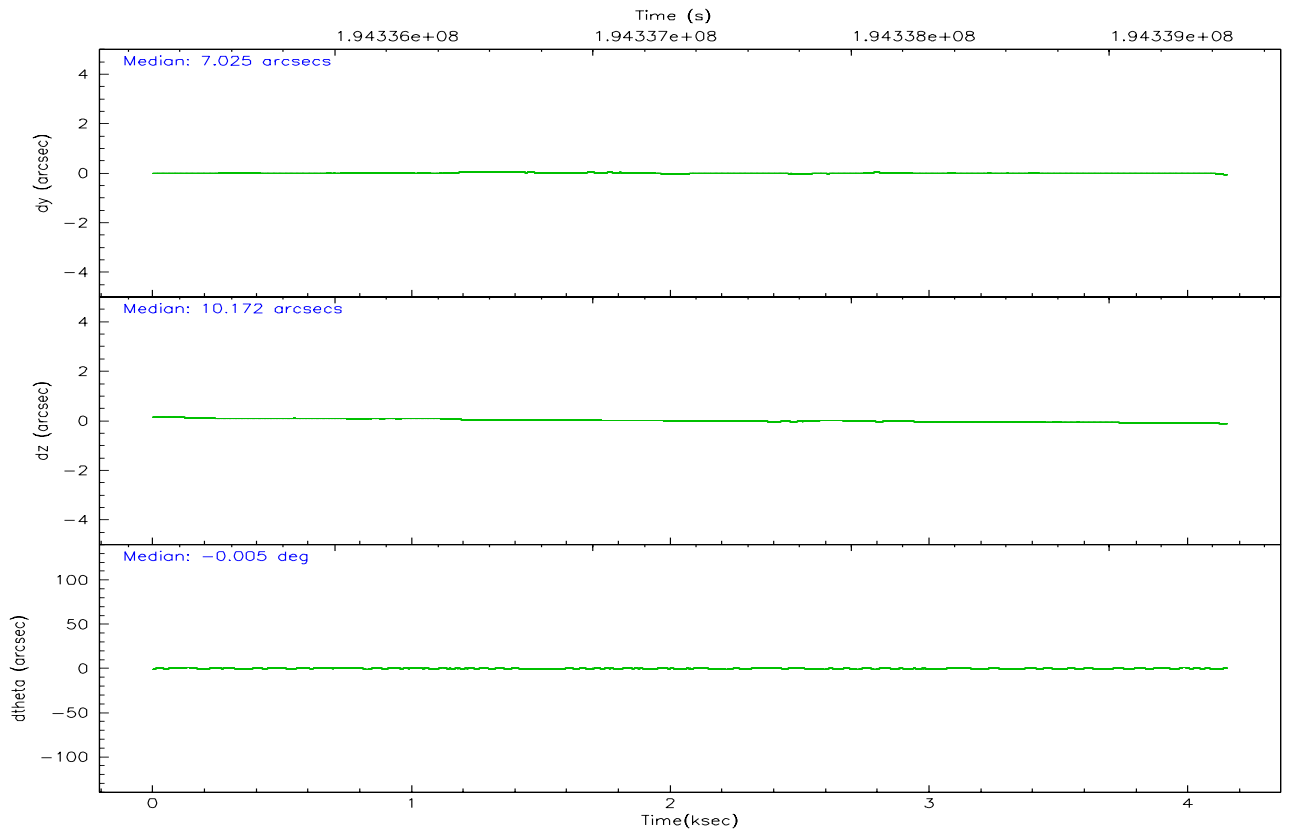
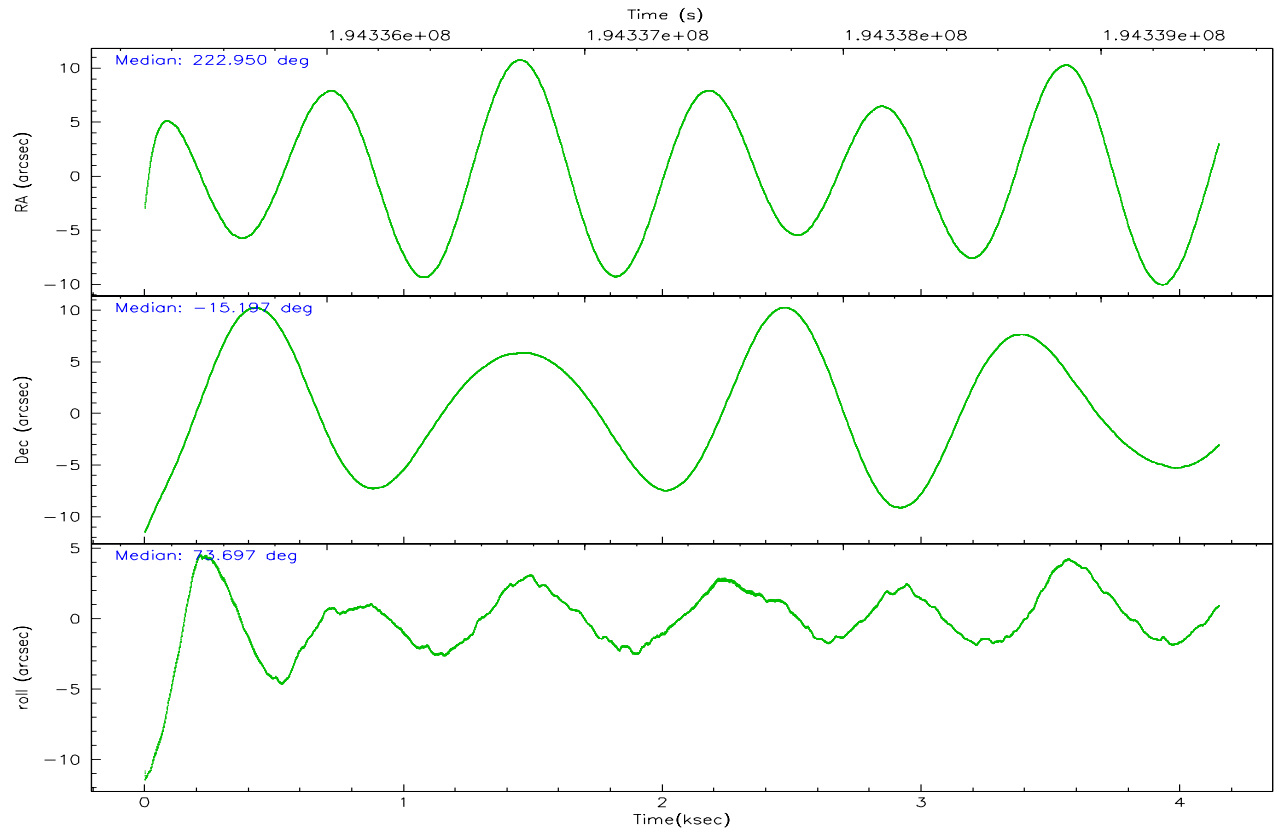
	ccd 2	ccd 3	ccd 5	ccd 6	ccd 7	ccd 8
grade 0 events	1833	1683	2626	1826	1020	2920
	5%	5%	5%	5%	2%	7%
grade 1 events	22	17	86	17	34	20
	0%	0%	0%	0%	0%	0%
grade 2 events	794	702	6781	792	4130	1828
	2%	2%	13%	2%	9%	4%
grade 3 events	365	341	516	374	856	1008
	1%	1%	1%	1%	1%	2%
grade 4 events	347	398	573	370	873	920
	1%	1%	1%	1%	2%	2%
grade 5 events	1325	1406	2258	1482	2887	1900
	4%	4%	4%	4%	6%	4%
grade 6 events	623	629	12055	761	9688	2238
	1%	2%	24%	2%	22%	5%
grade 7 events	27371	26201	24363	25665	23607	30082
	83%	83%	49%	82%	54%	73%

2.2 Compared Parameters

Parameter	Planned	Actual	Parameter	Planned	Actual
Instrument	ACIS	ACIS	Obspar format version number	6	6
Detector	ACIS-235678	ACIS-235678	Obspar file type	PREDICTED	ACTUAL
Grating	NONE	NONE	Obspar update status	NONE	UPDATED
Data mode	FAINT	FAINT	On-chip summing requested	N	N
Observation mode	POINTING	POINTING	Subarray requested	NONE	NONE
Pointing RA	222.957340	222.9501768084294	Alternating exposures requested	N	N
Pointing Dec	-15.223231	-15.19692031288725	Primary exposure time	0.000000	3.2
Pointing Roll	73.547709	73.70245279285895			
SIM focus pos (mm)	-0.684267	-0.6828225247311905			
SIM defocus (mm)	0	0.001444936568705701			
SIM translation stage pos (mm)	-190.132523	-190.1400660498719			
SIM translation stage offset (mm)	0	0.00754346686406393			
Observation start time	194335448.184000	194334039.30515			
Observation start date	2004-02-28T06:03:04	2004-02-28T05:40:39			
Observation end time	194339448.184000	194339973.54291			
Observation end date	2004-02-28T07:09:44	2004-02-28T07:19:33			
Read mode	TIMED	TIMED			

2.3 Aspect



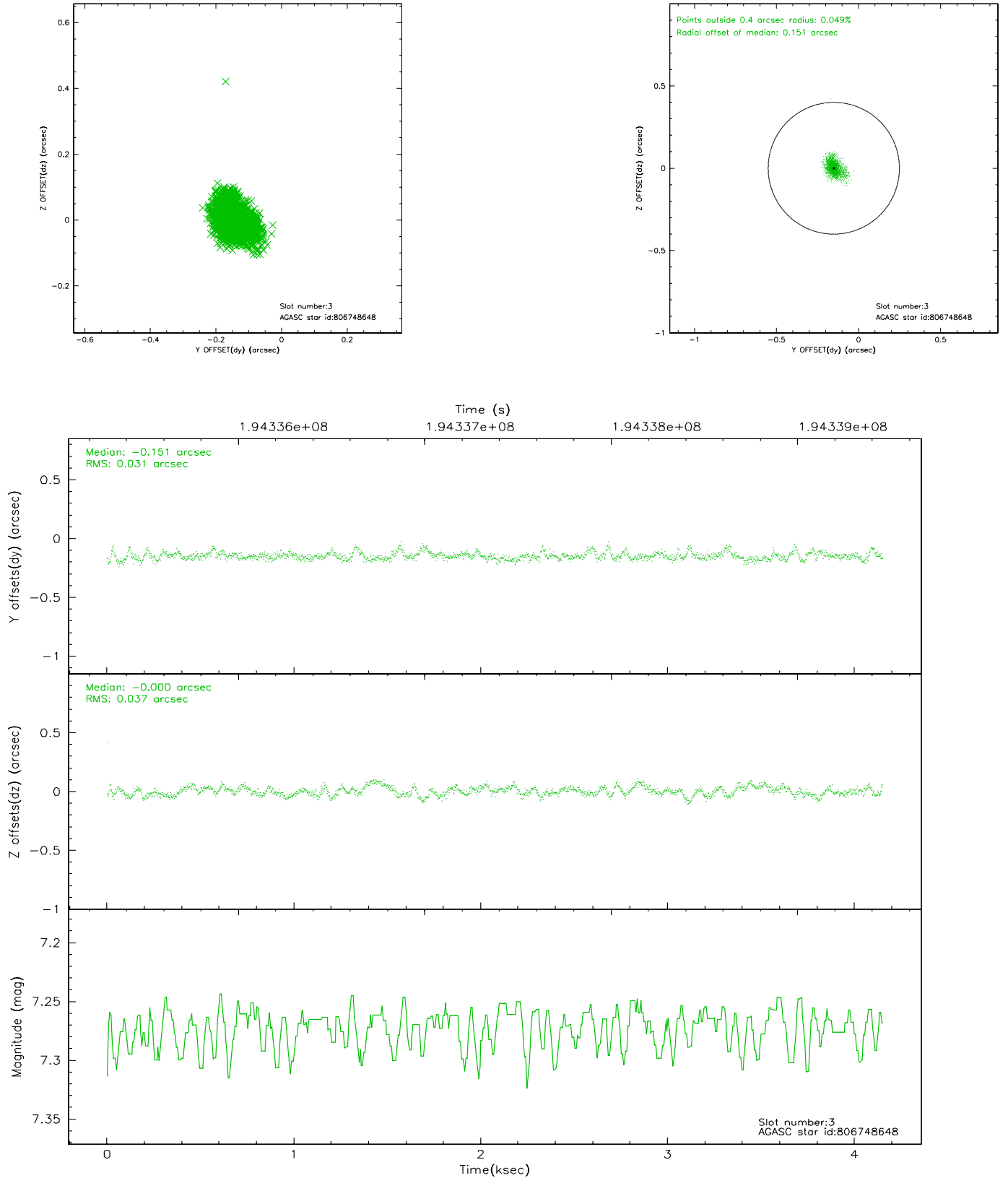


Slot Statistics

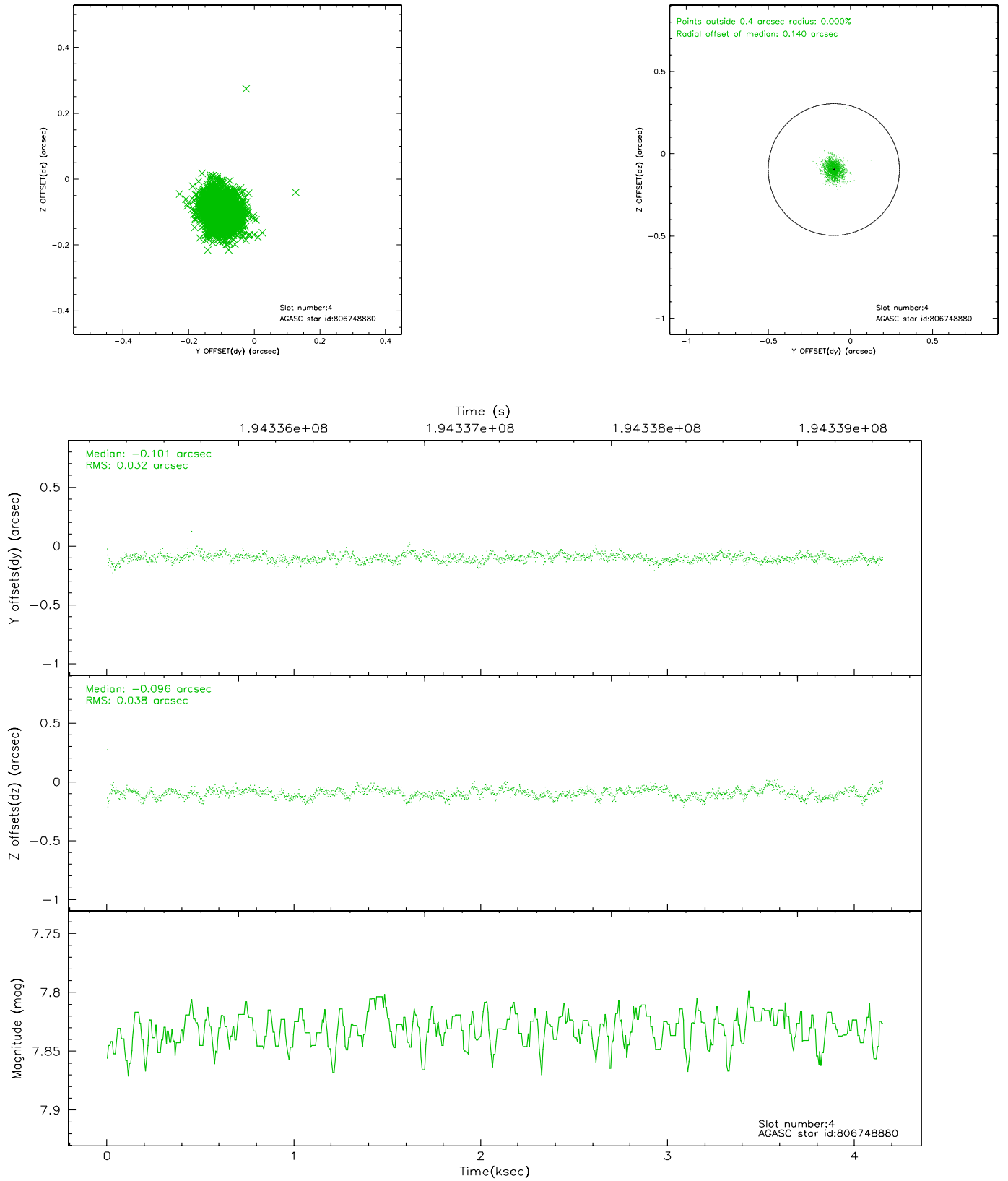
slot	status	id	mag	n_pts	med_dy	med_dz	dr1	dr2	ra	dec	mean_y	mean_z
0	FID	ACIS-S-2	7.09	1013	-0.032	0.019	0.007	0.011	0.000000	0.000000	-759.78	-1731.43
1	FID	ACIS-S-4	7.20	1013	0.014	0.010	0.005	0.009	0.000000	0.000000	2152.83	175.55
2	FID	ACIS-S-5	7.23	1013	-0.013	-0.020	0.006	0.010	0.000000	0.000000	-1810.71	170.82
3	GUIDE	806748648	7.27	2026	-0.151	-0.000	0.049	0.085	222.765284	-15.027473	486.62	839.79
4	GUIDE	806748880	7.83	2026	-0.101	-0.096	0.052	0.083	222.892175	-15.081810	424.56	361.59
5	GUIDE	806750408	9.85	2024	0.009	0.404	0.126	0.208	223.579743	-15.424787	-86.34	-2277.50
6	GUIDE	806750912	8.08	2026	0.062	-0.028	0.066	0.104	222.570262	-15.342513	-793.36	1165.28
7	GUIDE	806755256	9.39	2022	0.177	-0.287	0.104	0.177	222.323307	-15.344687	-1046.17	1986.43

2.4 Star Slots

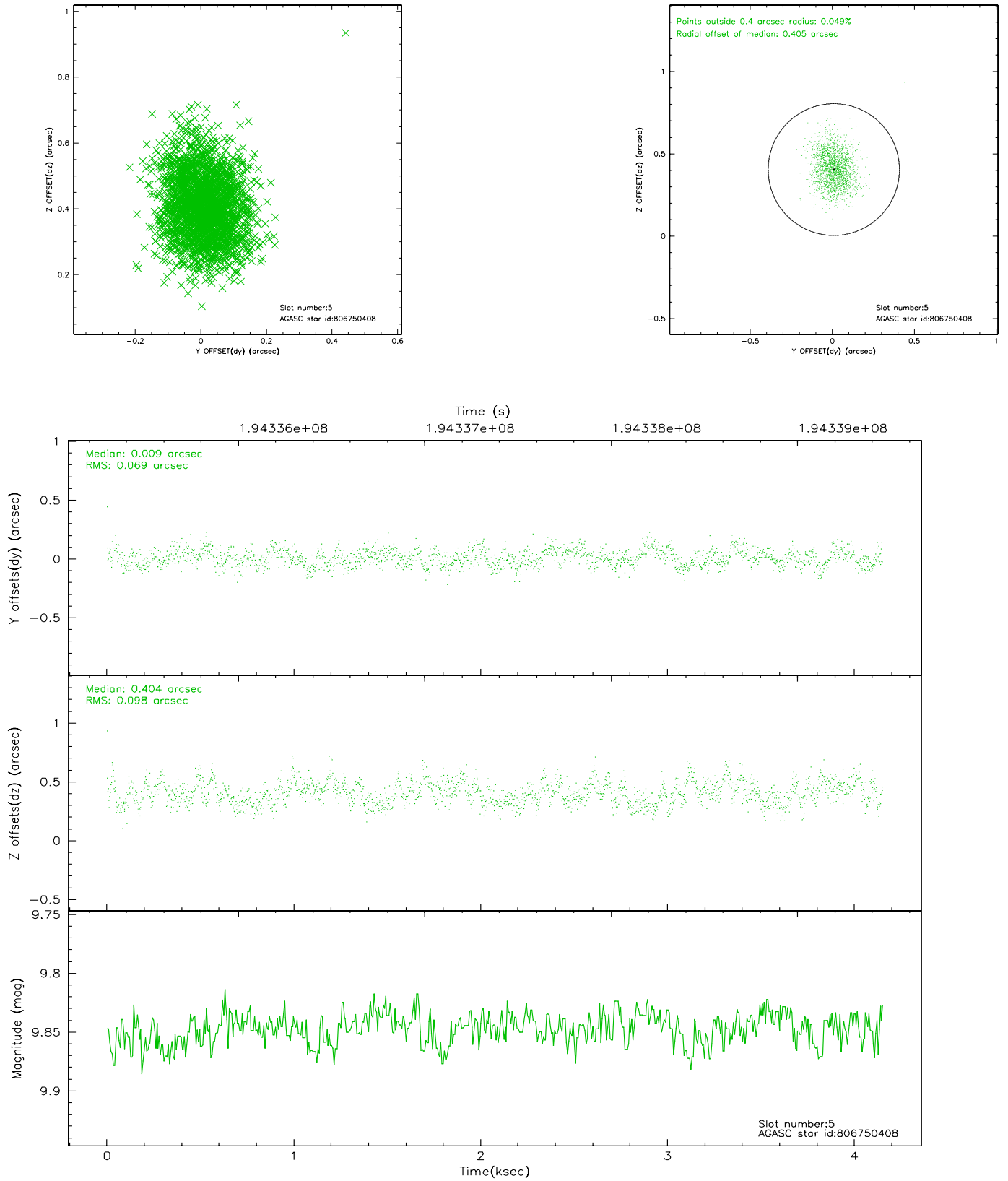
2.4.1 Slot 3



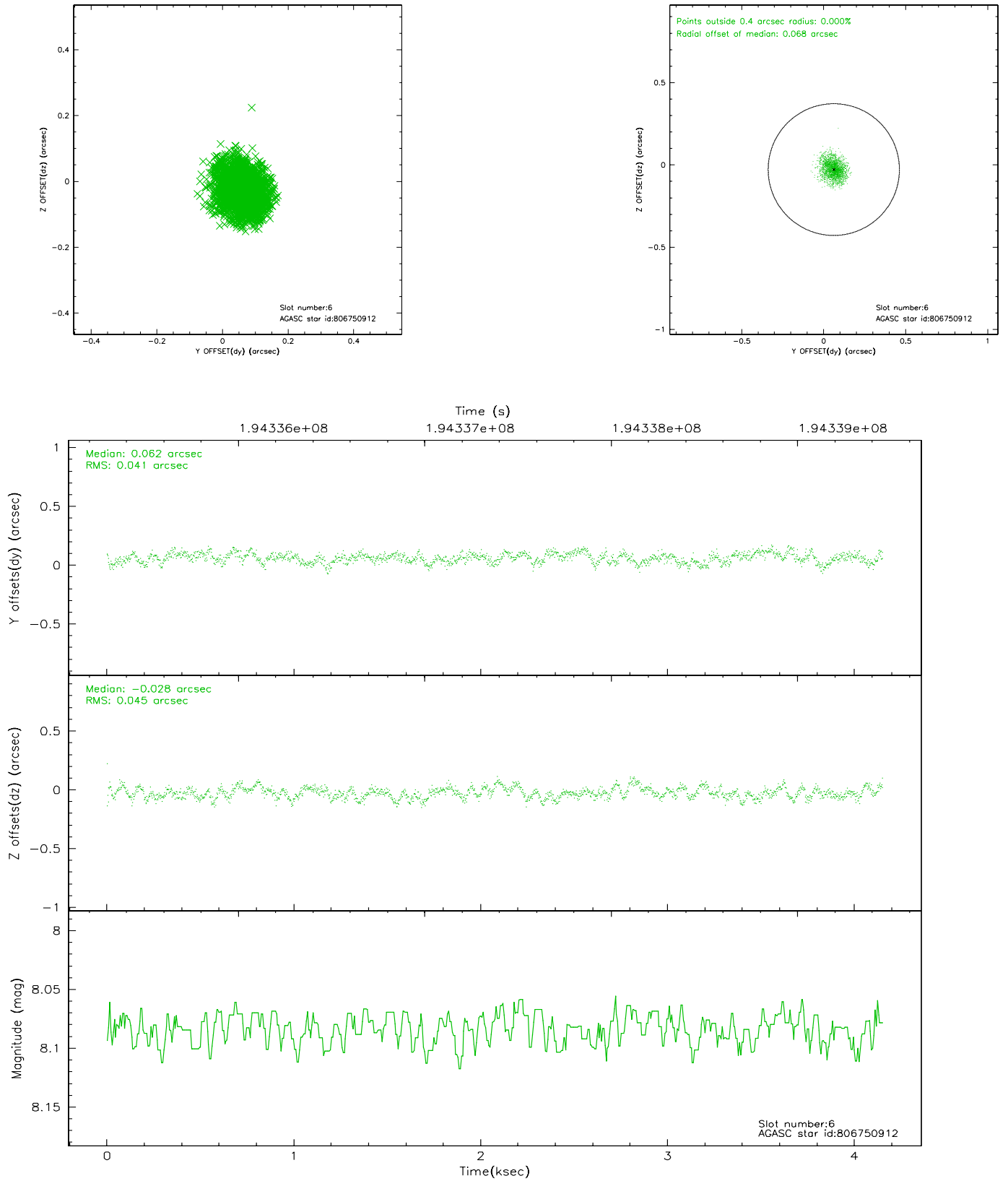
2.4.2 Slot 4



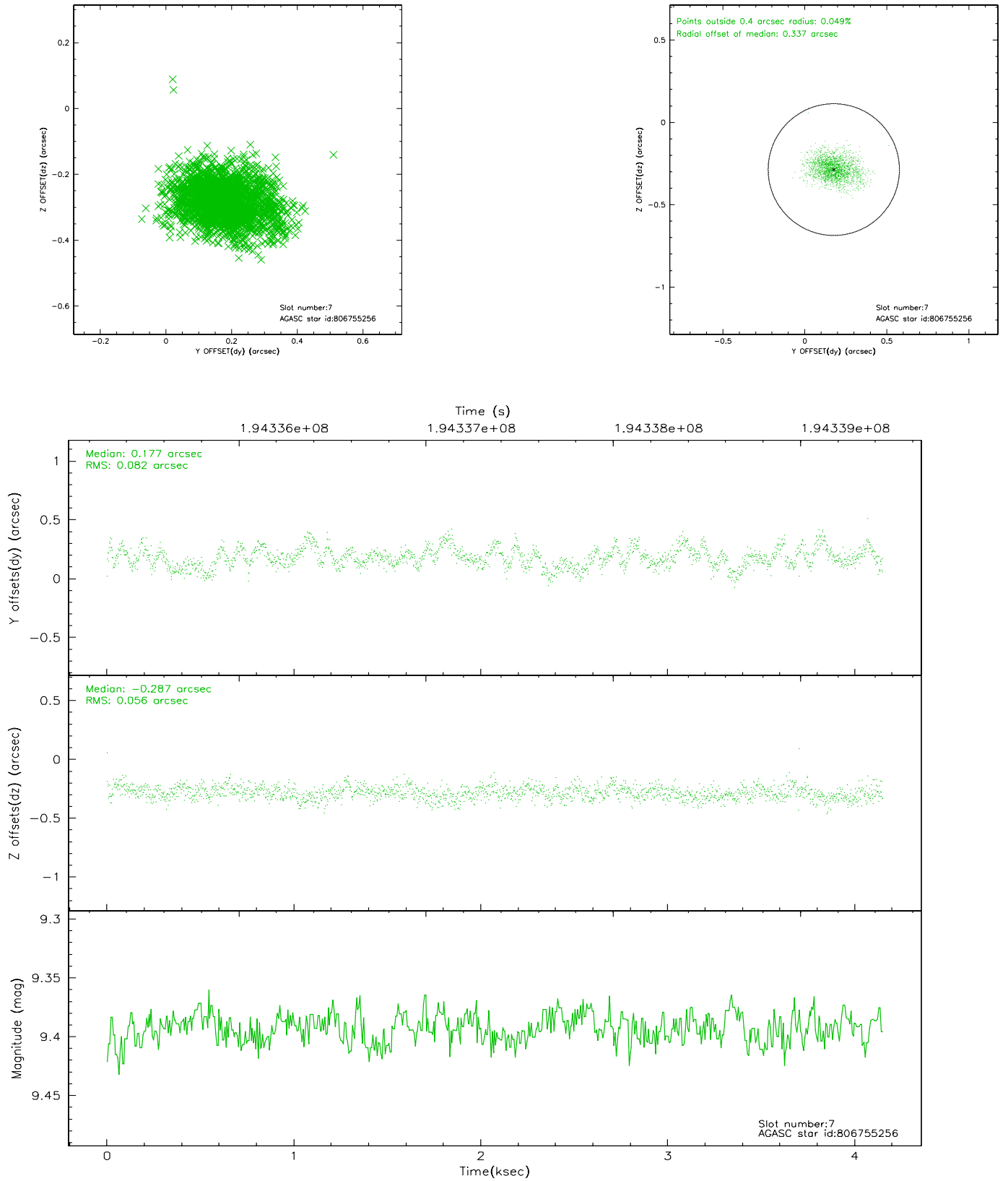
2.4.3 Slot 5



2.4.4 Slot 6

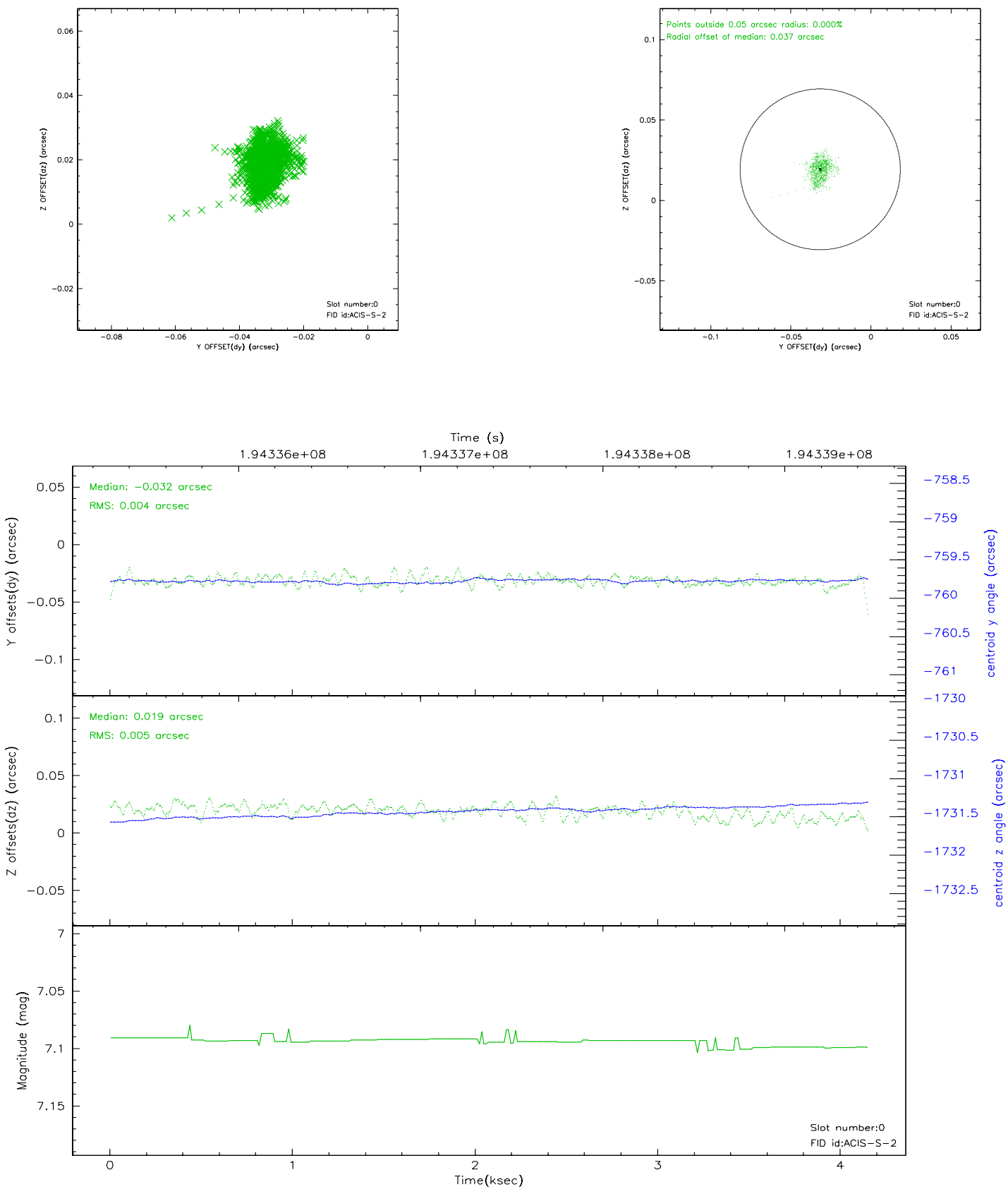


2.4.5 Slot 7

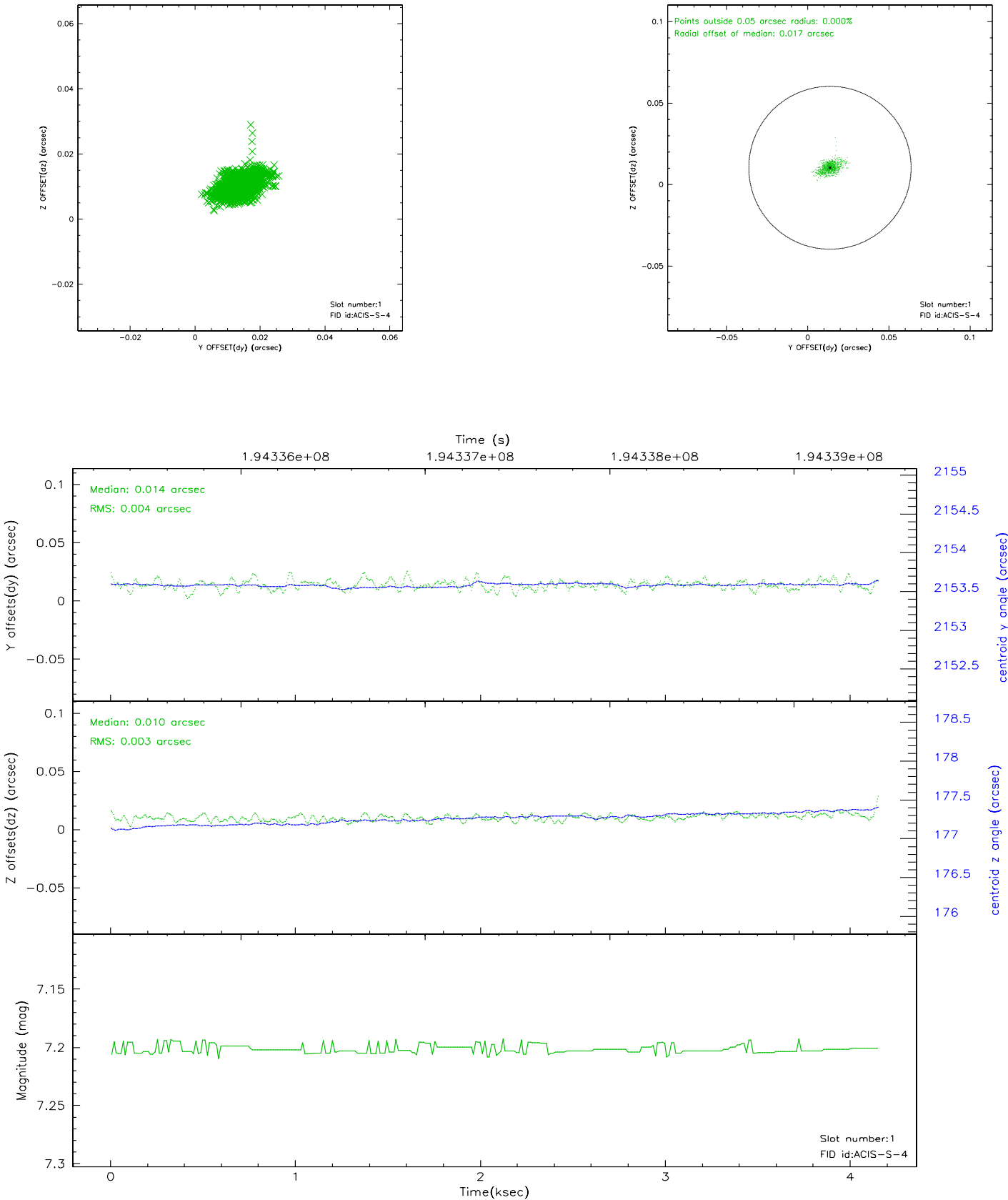


2.5 FID Slots

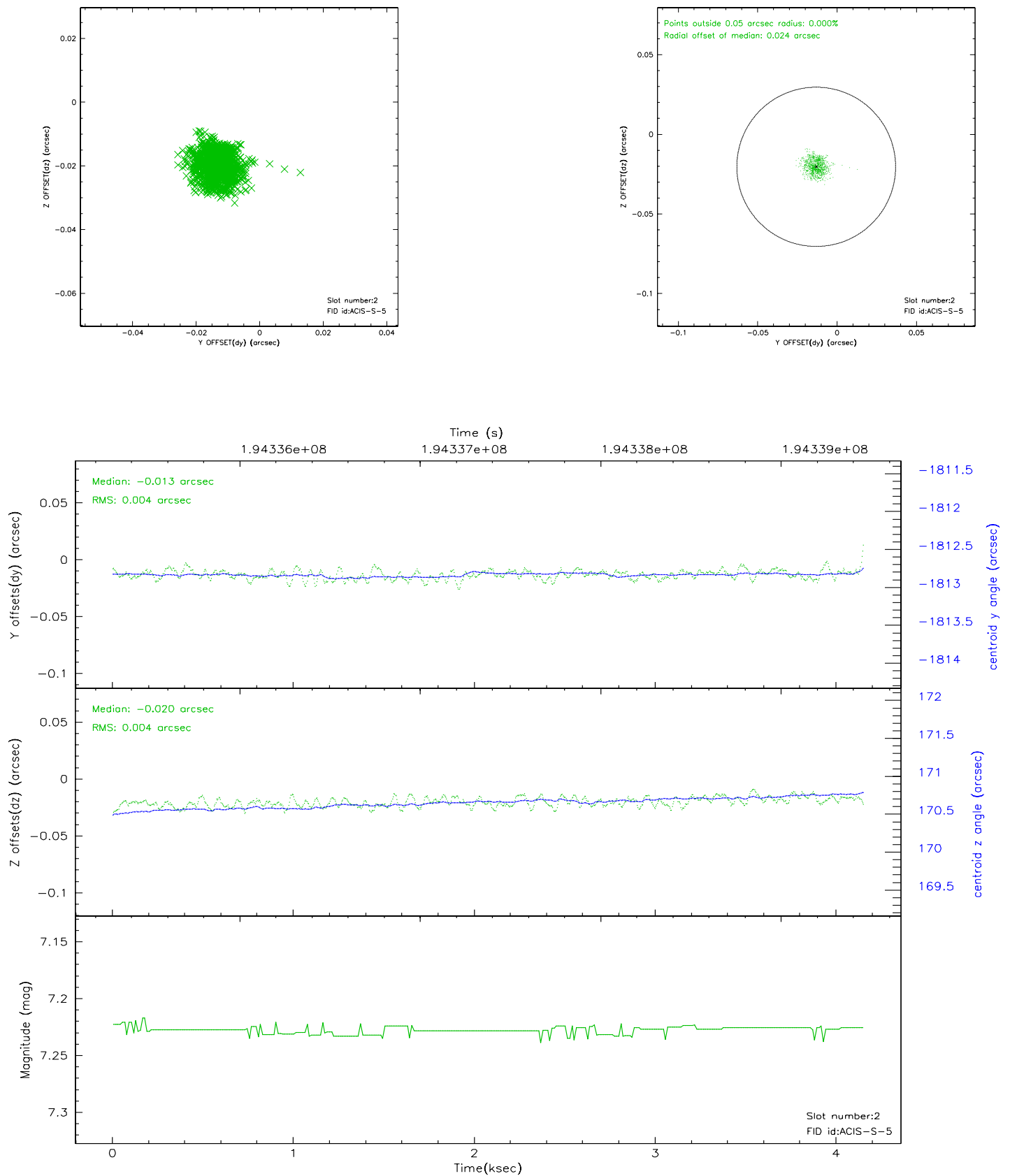
2.5.1 Slot 0



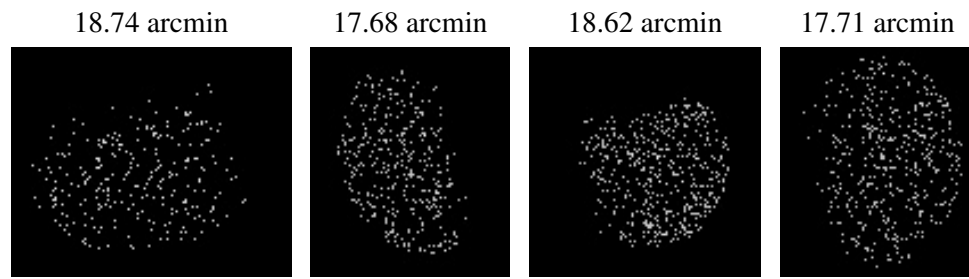
2.5.2 Slot 1



2.5.3 Slot 2



3 Point Sources



A Summary

A.1 Status

V&V Scientist	Jen Lauer
V&V Date (YYYY-MM-DD)	2006.05.31
V&V Edition	1
V&V Disposition and Status	OK
V&V Charge Time	4.143

A.2 Comments