

V&V Reference Report

L2 ASCDS Version : 8.1.2

Observation 475 - L2 Version 3

Chandra X-Ray Center

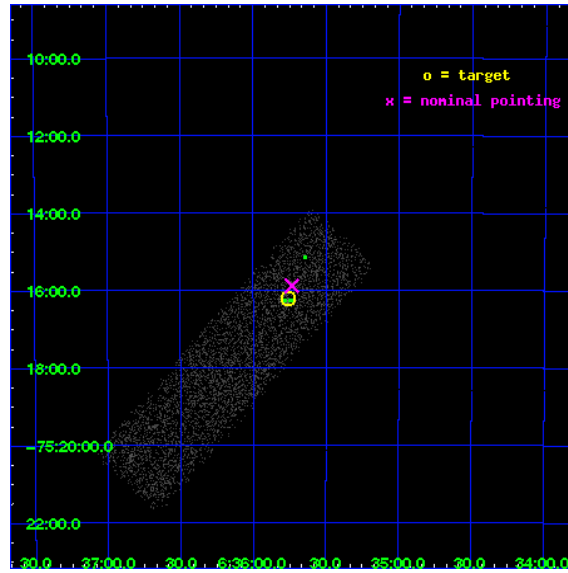
L2 Processing Date : Dec 16 2009

Contents

1	Front	2
2	OBI	3
2.1	OBI	3
2.1.1	Images	3
2.1.2	Bias	3
2.1.3	Parameters	4
2.1.4	Events	4
2.2	Compared Parameters	5
2.3	Aspect	6
2.4	Star Slots	9
2.4.1	Slot 3	9
2.4.2	Slot 4	10
2.4.3	Slot 5	11
2.4.4	Slot 6	12
2.5	FID Slots	13
2.5.1	Slot 0	13
2.5.2	Slot 1	14
2.5.3	Slot 2	15
3	Point Sources	16
A	Summary	17
A.1	Status	17
A.2	Comments	17

1 Front

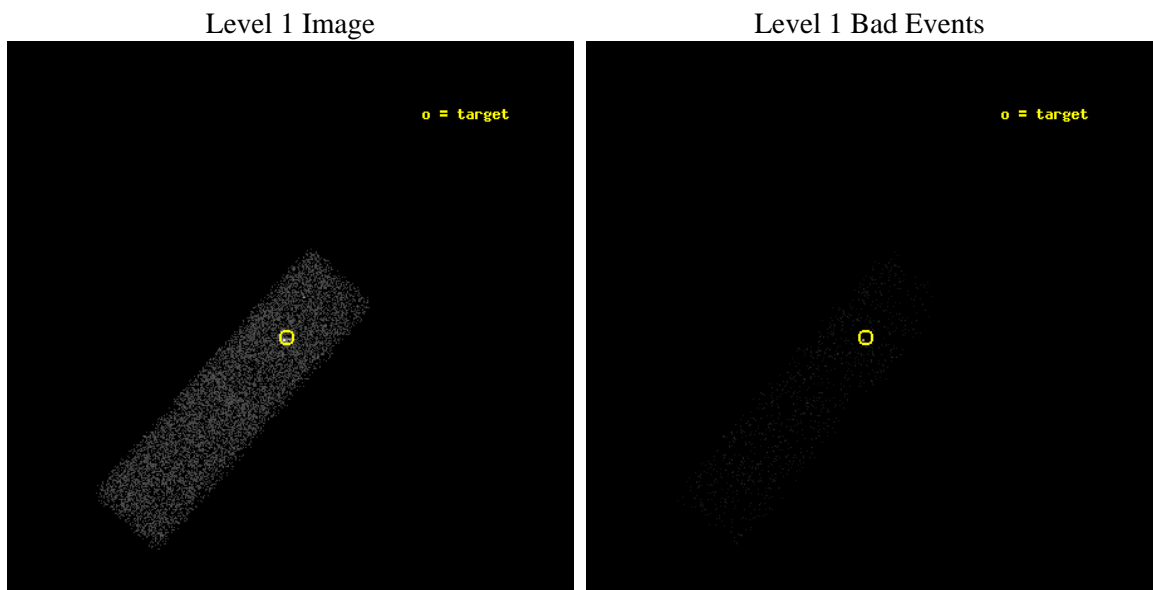
seq_num	790036	Sequence number
obs_id	475	Observation id
title	PKS0637-752, an AGN used for focussing	Proposal title
observer	Dr. CXC Calibration	Principal investigator
object	PKS0637-752	Source name
dtcycle	0	
cycle	P	events from which exps? Prim/Second/Both
ra_targ	98.94	Observer's specified target RA
dec_targ	-75.27	Observer's specified target Dec
ra_nom	98.933659175421	Nominal RA
dec_nom	-75.26486474382	Nominal Dec
roll_nom	131.54532952285	Nominal Roll
revision	3	Processing version of data
ontime	4855.4999919534	Sum of GTIs [s]
livetime	4643.7452103609	Livetime [s]
ontime7	4855.4999919534	Sum of GTIs [s]
l2events	7919	Number of level 2 events



2 OBI

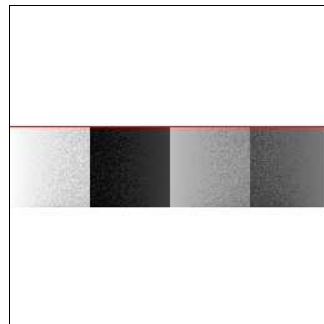
2.1 OBI

2.1.1 Images



2.1.2 Bias

Chip 7



2.1.3 Parameters

obi_num	1	Obi number	sched_exp_time	5000.000000	Scheduled observation exposure time
ascdsver	8.1.2	ASCDS version number	ontime	4855.4999919534	Sum of GTIs [s]
caldbver	4.1.4	 	ontime7	4855.4999919534	Sum of GTIs [s]
date	2009-12-16T04:06:49	Date and time of file creation	l1events	15180	Number of level 1 events
revision	3	Processing version of data			

2.1.4 Events

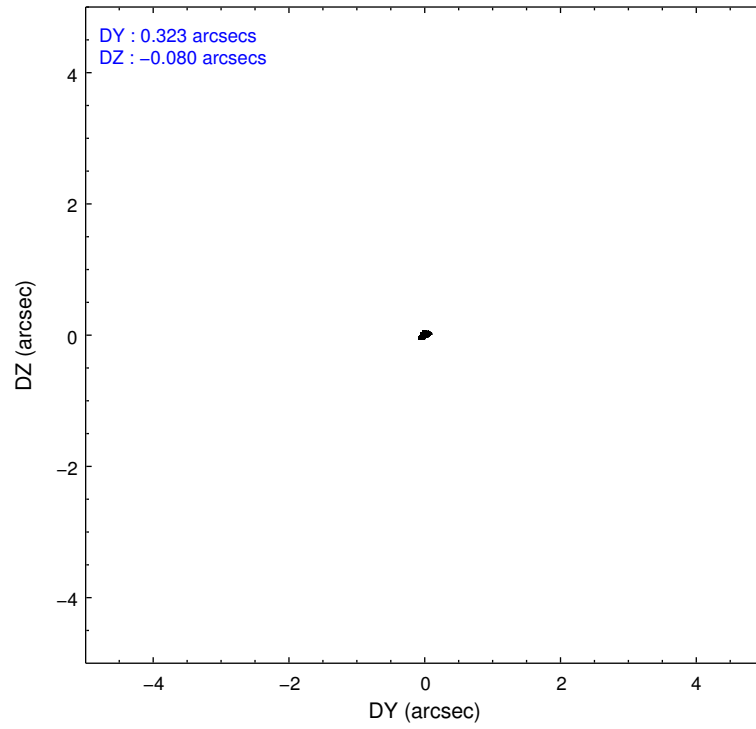
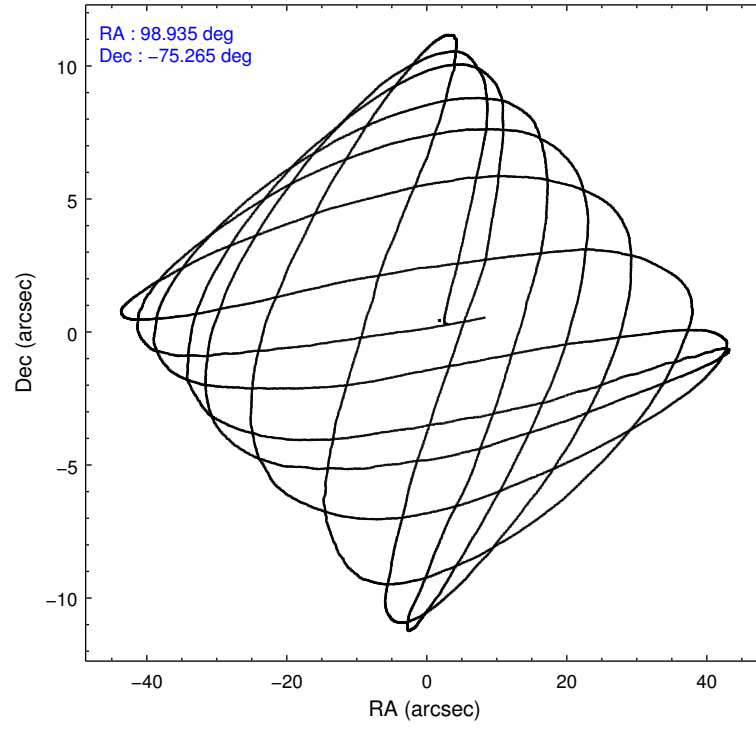
	ccd 7
level 1 events	15180
rejected events	6936
rejected %	45%

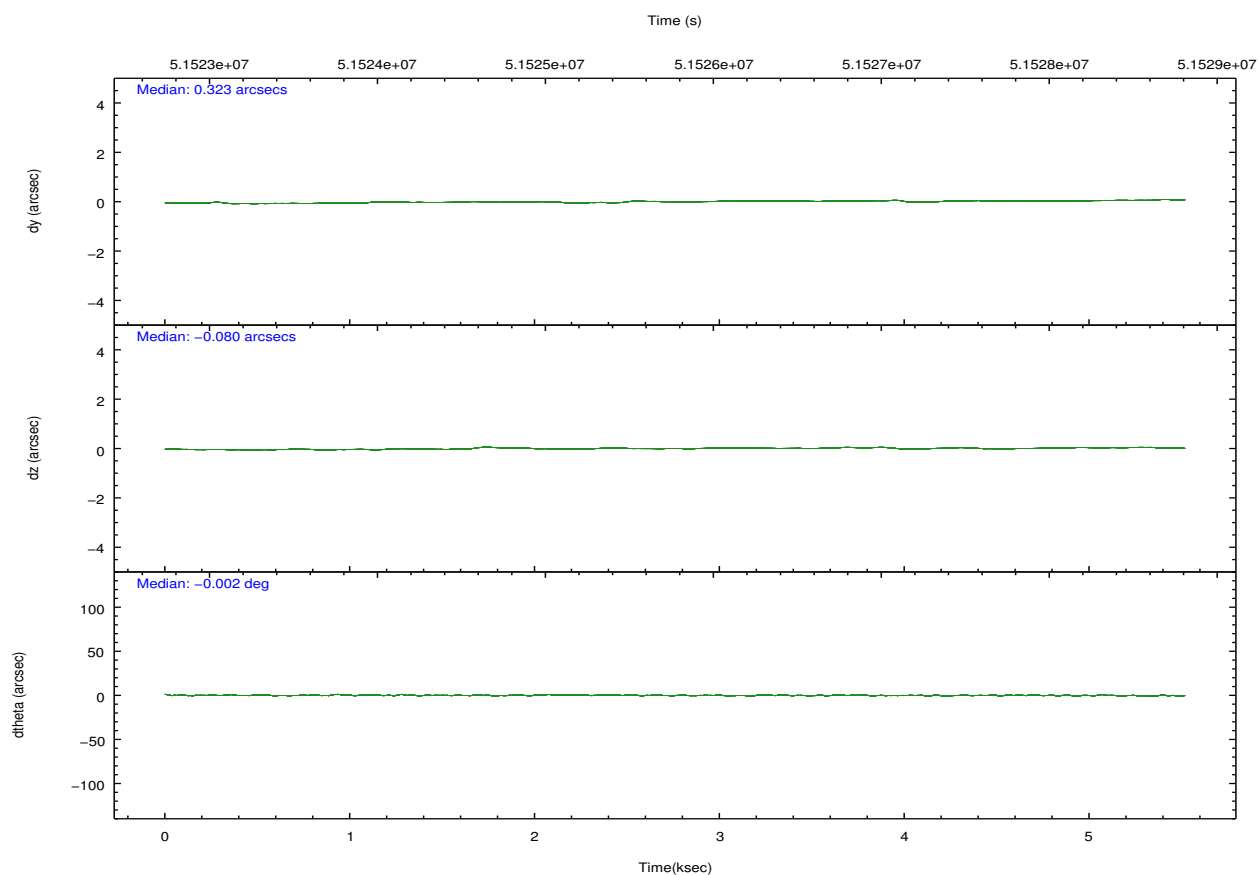
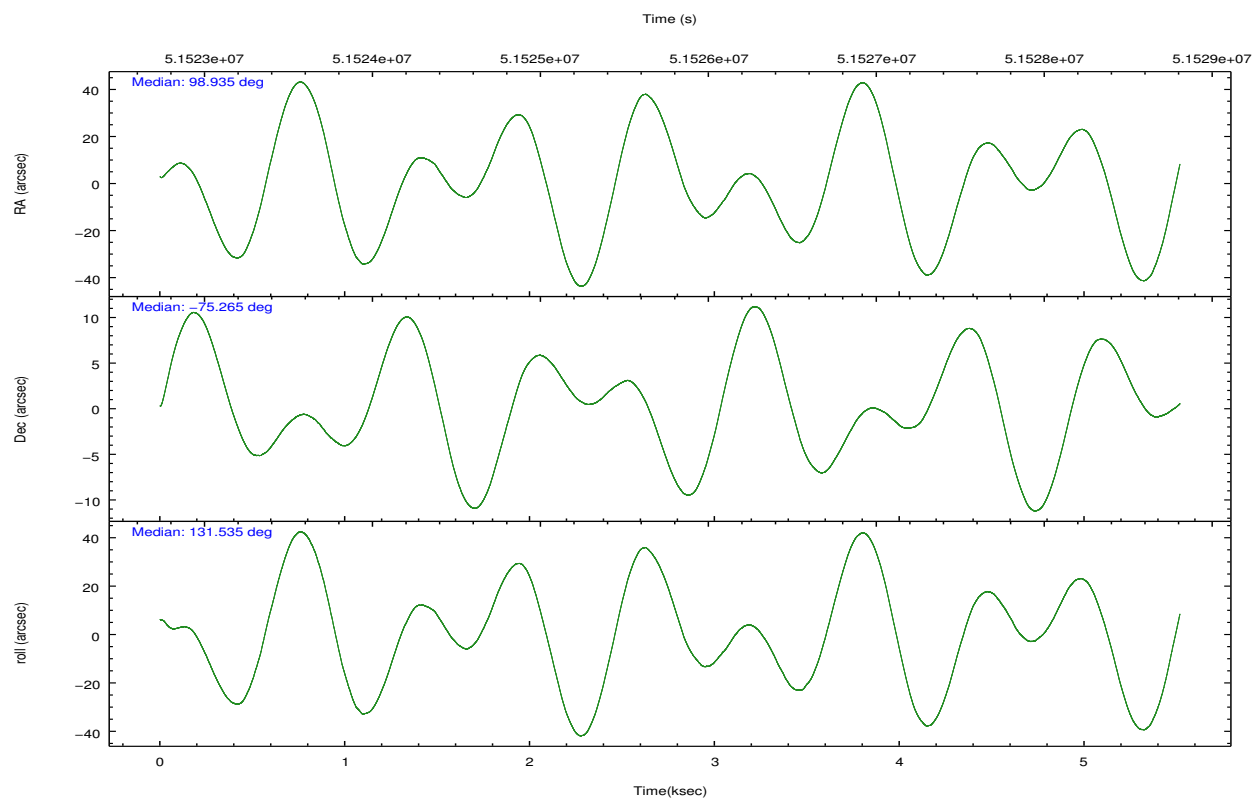
	ccd 7
grade 0 events	1098
	7%
grade 1 events	39
	0%
grade 2 events	1345
	8%
grade 3 events	1123
	7%
grade 4 events	871
	5%
grade 5 events	866
	5%
grade 6 events	3808
	25%
grade 7 events	6030
	39%

2.2 Compared Parameters

Parameter	Planned	Actual	Parameter	Planned	Actual
Instrument	ACIS	ACIS	Obspar format version number	6	6
Detector	ACIS-7	ACIS-7	Obspar file type	PREDICTED	ACTUAL
Grating	NONE	NONE	Obspar update status	NONE	UPDATED
Data mode	FAINT	FAINT	Number of optional ACIS chips dropped	0	0
Observation mode	POINTING	POINTING	On-chip summing requested	N	N
Pointing RA	99.036530	98.93365917542111	Subarray requested	CUSTOM	1/4
Pointing Dec	-75.274145	-75.2648647438196	Subarray start row	384	384
Pointing Roll	131.488182	131.5453295228539	Subarray row count	256	256
SIM focus pos (mm)	-0.759607	-0.9388408860334641	Alternating exposures requested	N	N
SIM defocus (mm)	-0.07534	-0.2545734247335678	Primary exposure time	0.000000	0.9
SIM translation stage pos (mm)	-190.132523	-190.1199515274594			
SIM translation stage offset (mm)	0	-0.012571055548392			
Observation start time	51523530.184000	51522856.626063			
Observation start date	1999-08-20T08:04:26	1999-08-20T07:54:16			
Observation end time	51528530.184000	51528657.101272			
Observation end date	1999-08-20T09:27:46	1999-08-20T09:30:57			
Read mode	TIMED	TIMED			

2.3 Aspect



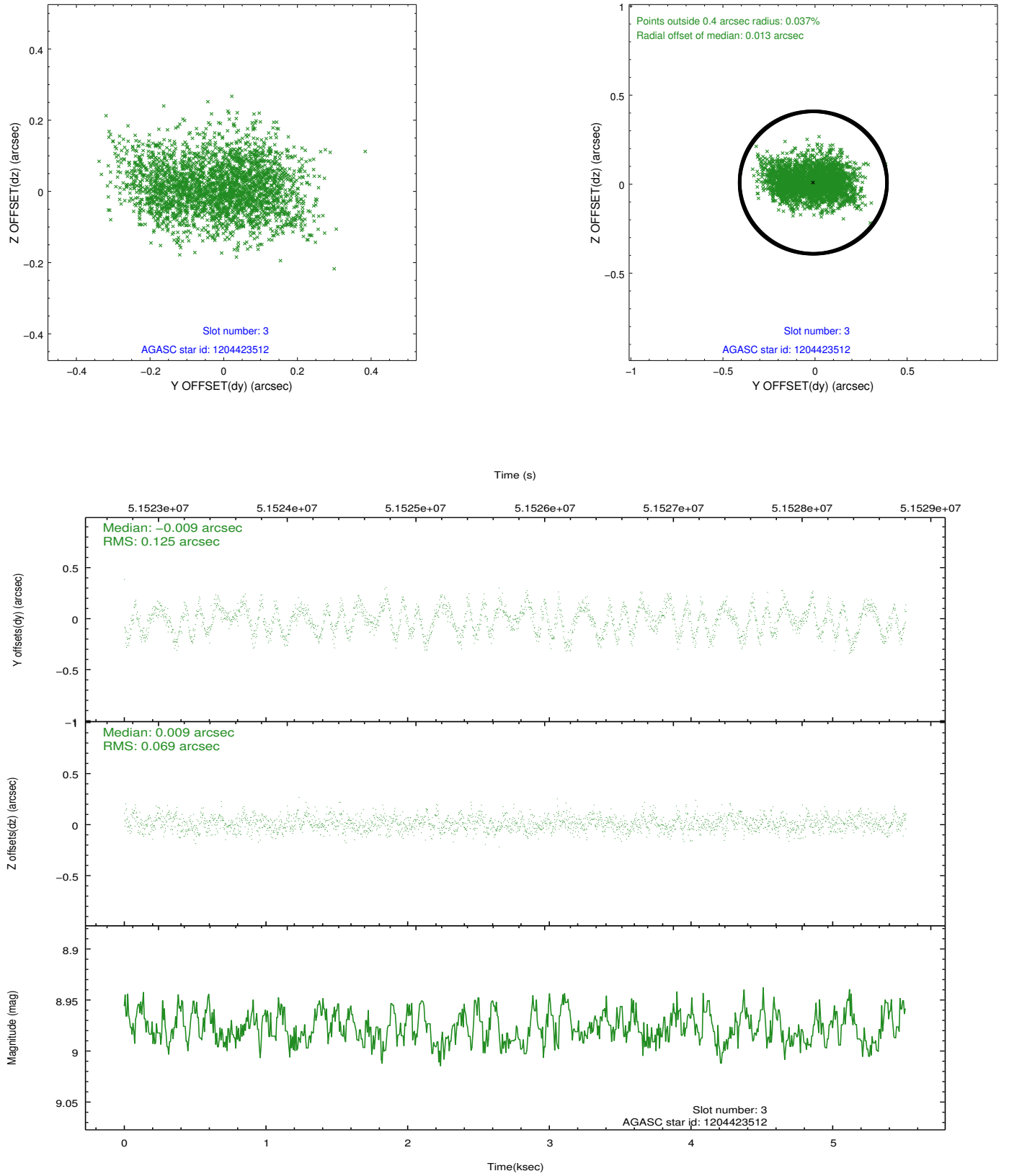


Slot Statistics

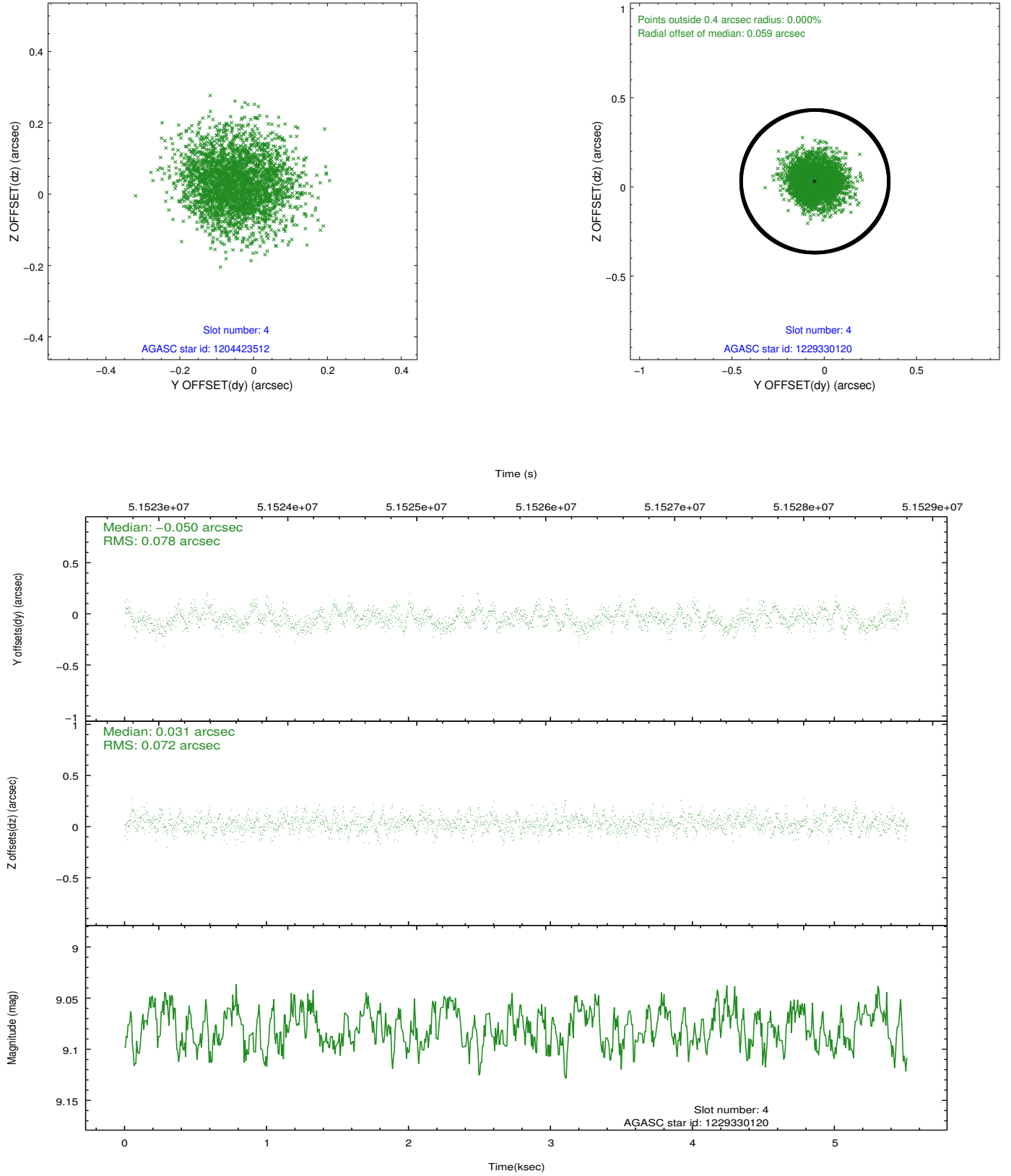
slot	status	id	mag	n_pts	med_dy	med_dz	dr1	dr2	ra	dec	mean_y	mean_z
0	FID	ACIS-S-3	7.37	2691	-0.029	-0.006	0.005	0.009	0.000000	0.000000	60.22	-1850.33
1	FID	ACIS-S-4	7.23	2692	0.115	0.020	0.004	0.008	0.000000	0.000000	2160.55	186.60
2	FID	ACIS-S-5	7.26	2692	-0.114	-0.003	0.005	0.008	0.000000	0.000000	-1805.19	180.96
3	GUIDE	1204423512	8.98	2688	-0.009	0.009	0.156	0.241	100.368786	-74.674048	768.38	-2370.83
4	GUIDE	1229330120	9.08	2692	-0.050	0.031	0.114	0.183	98.874898	-75.821050	-1380.65	1410.38
5	GUIDE	1229331616	9.92	2687	0.022	-0.007	0.152	0.242	96.182998	-75.347362	1475.60	2163.01
6	GUIDE	1204425200	9.79	2690	0.040	-0.033	0.166	0.264	100.052994	-74.556368	1285.01	-2434.93
7	UNUSED		0.00	0	0.000	0.000	0.000	0.000	0.000000	0.000000	0.00	0.00

2.4 Star Slots

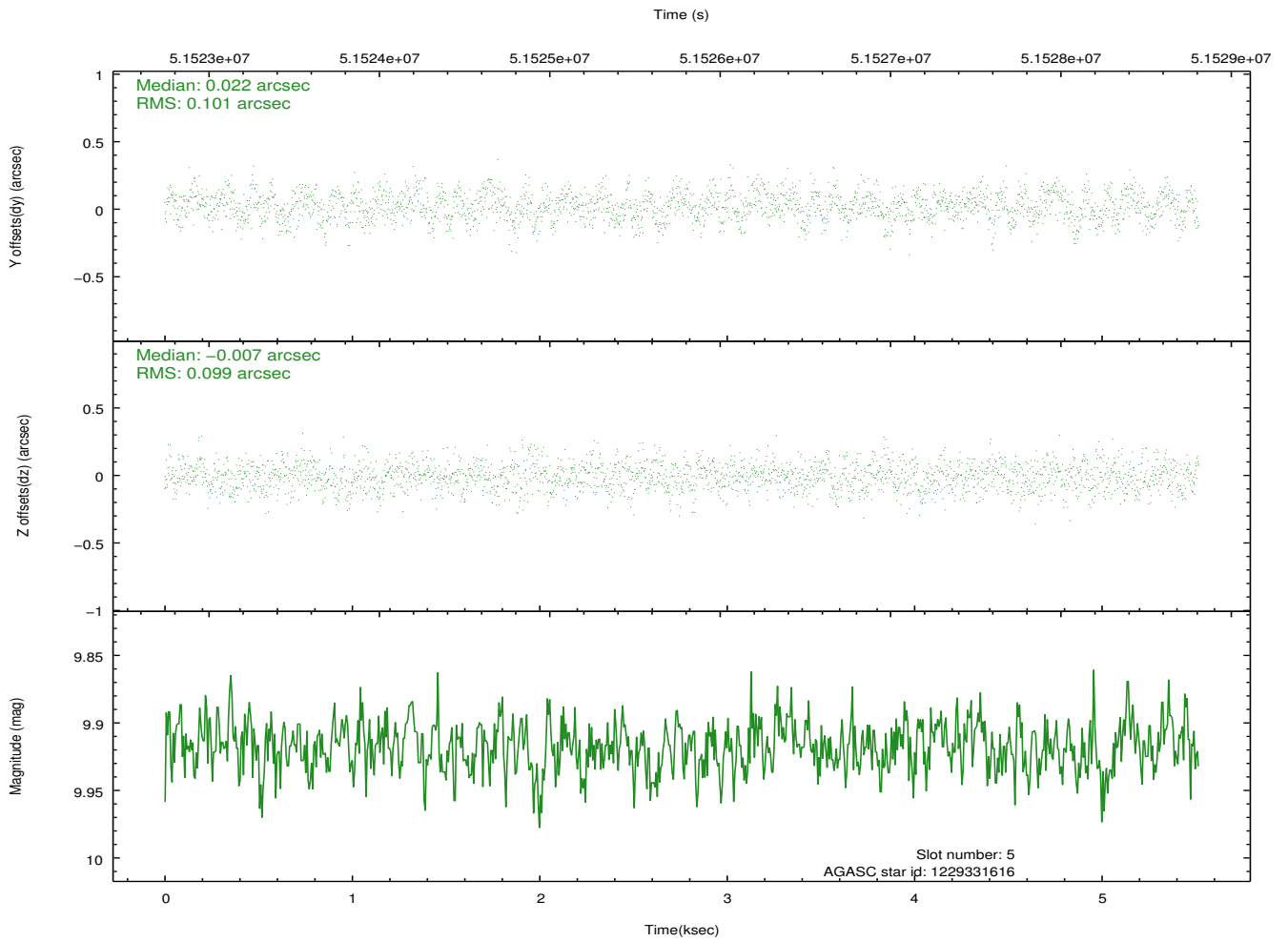
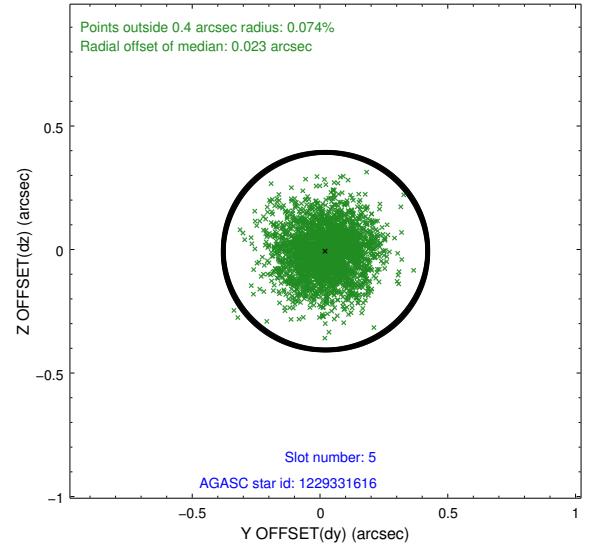
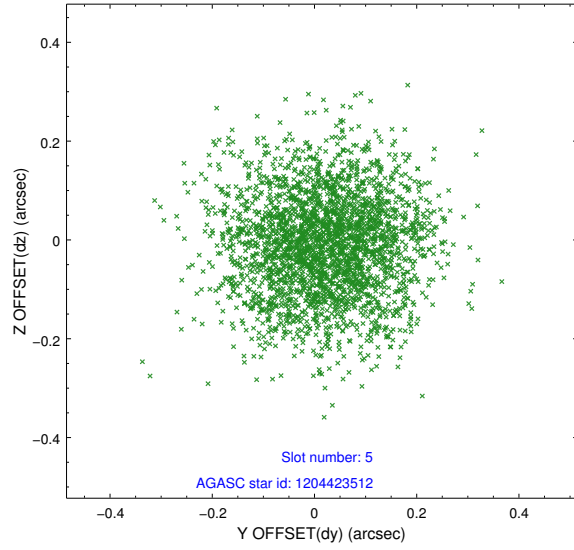
2.4.1 Slot 3



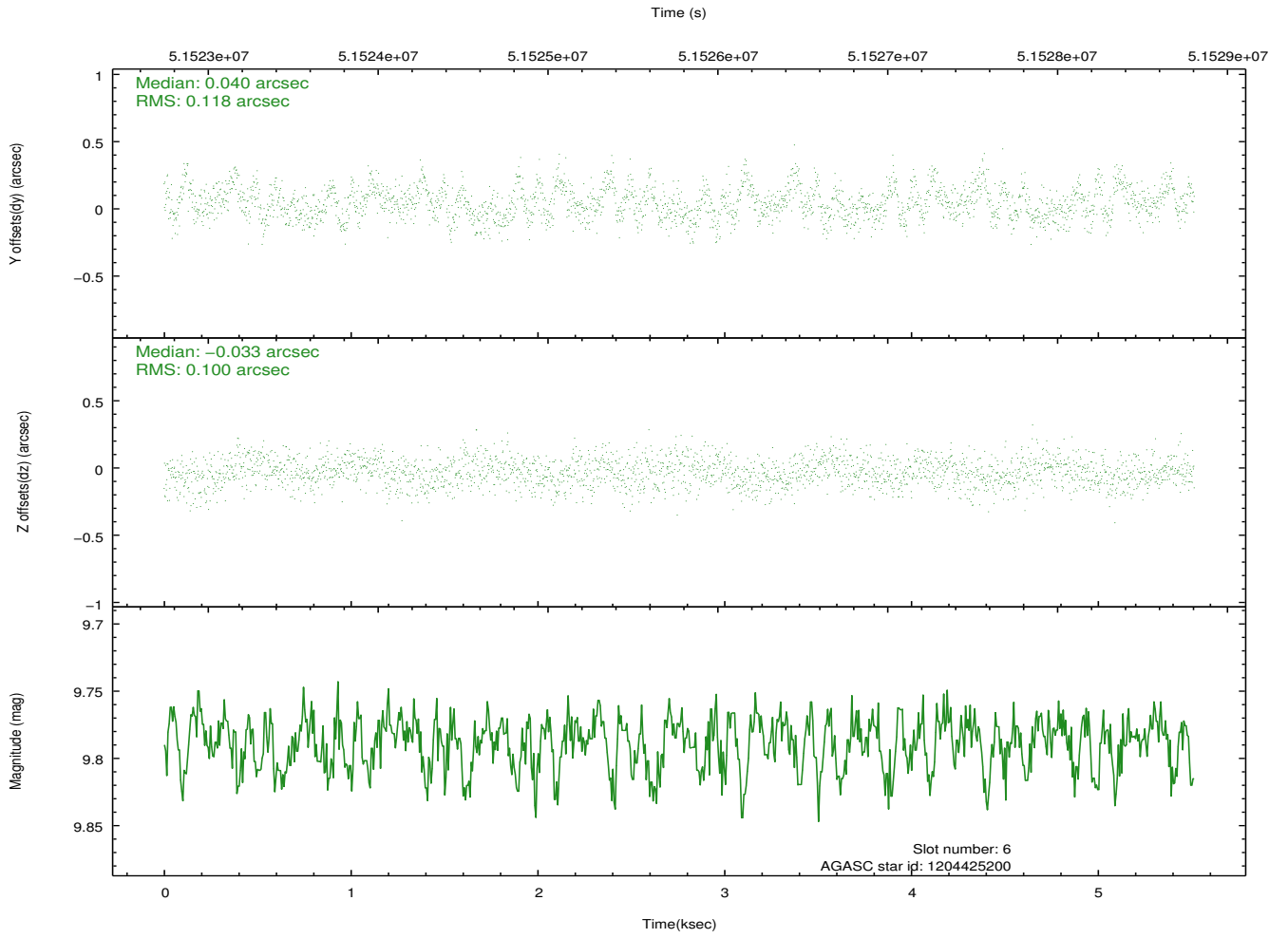
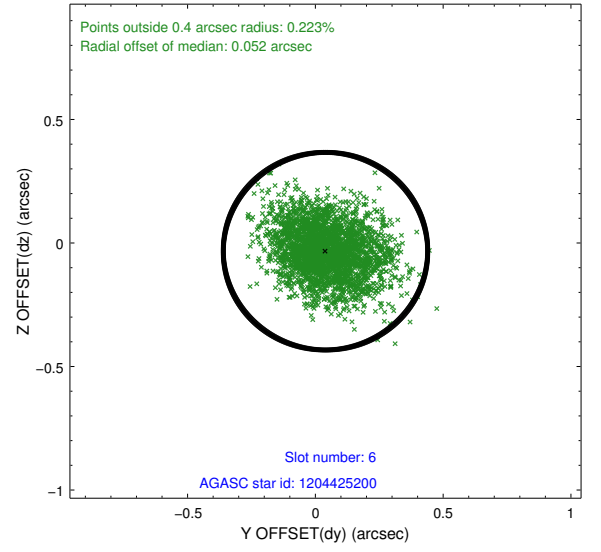
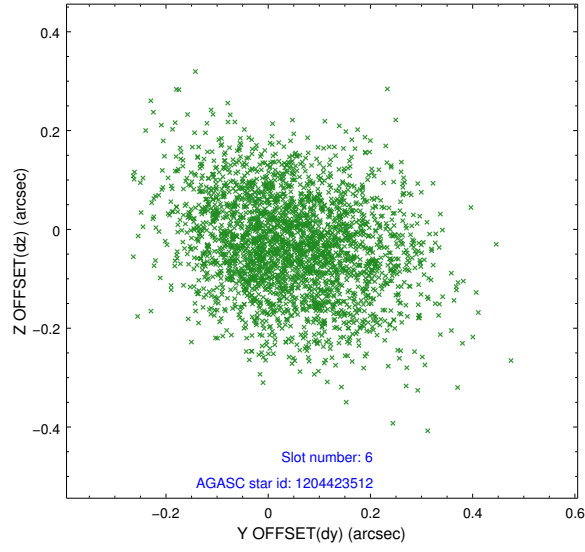
2.4.2 Slot 4



2.4.3 Slot 5

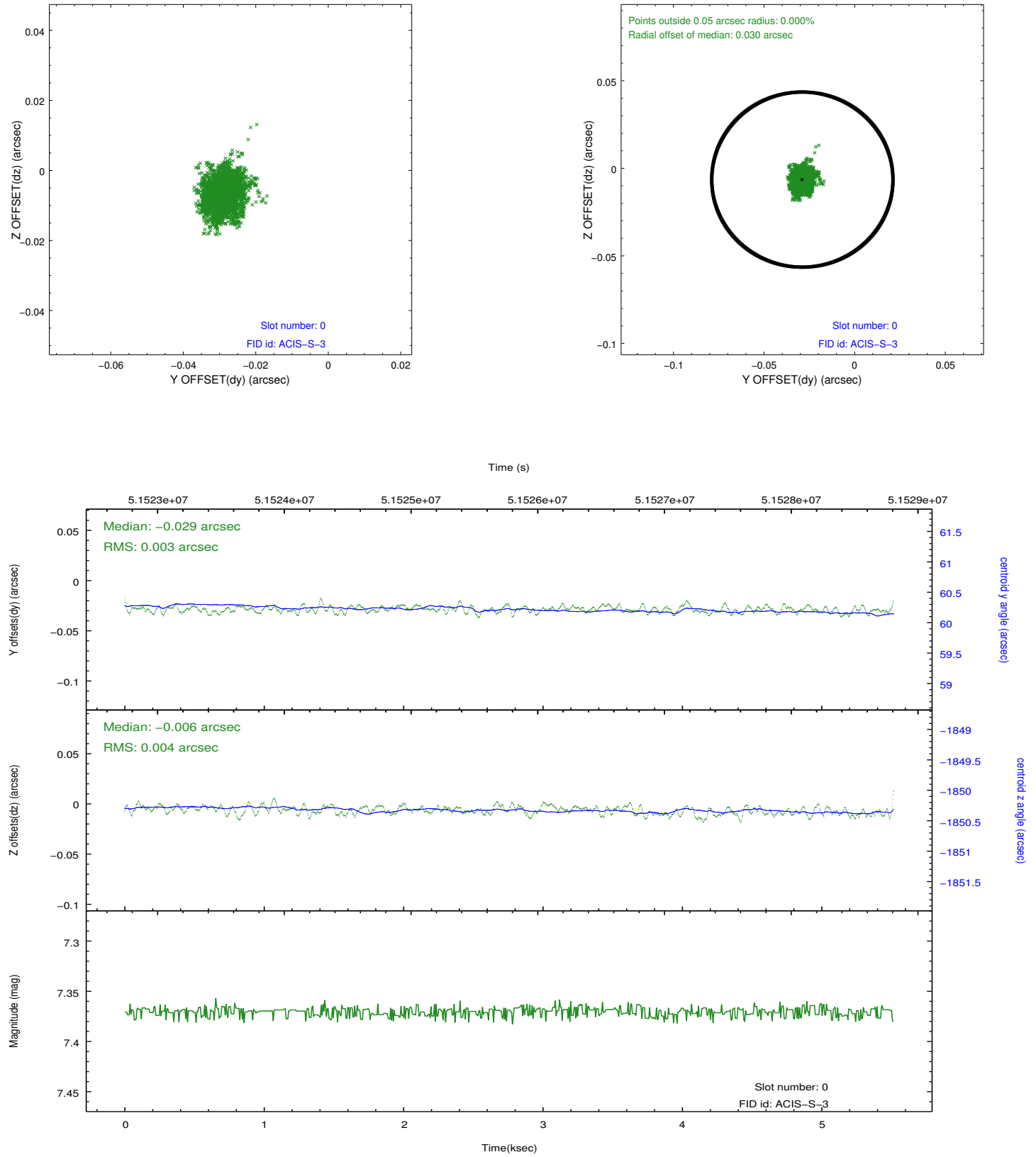


2.4.4 Slot 6

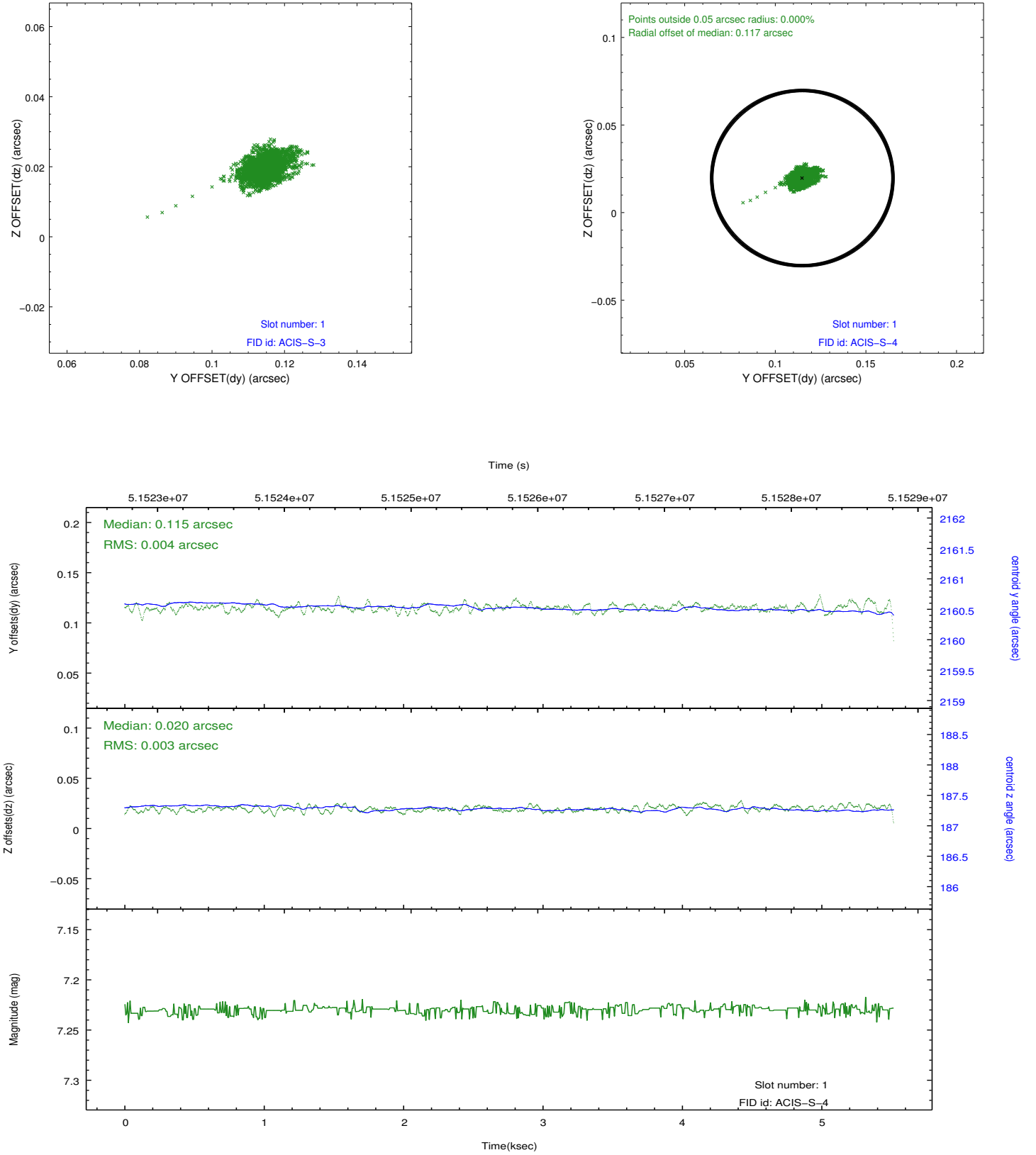


2.5 FID Slots

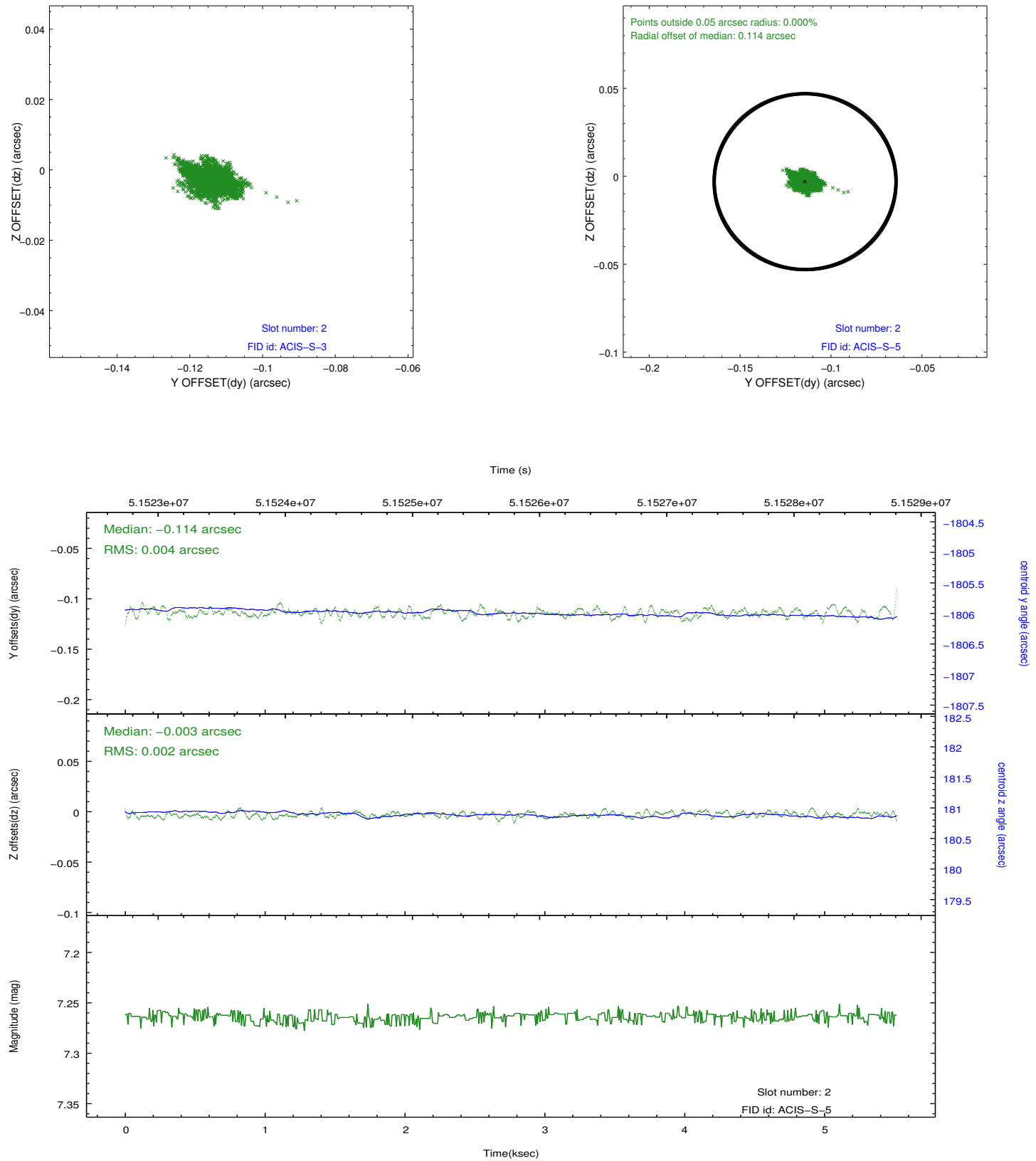
2.5.1 Slot 0



2.5.2 Slot 1



2.5.3 Slot 2



3 Point Sources

A Summary

A.1 Status

V&V Scientist	Joy Nichols
V&V Date (YYYY-MM-DD)	2010.05.18
V&V Edition	1
V&V Disposition and Status	OK
V&V Charge Time	4.857

A.2 Comments

ACIS-S Plate Focus using PKS 0637-752

===

SIM FA = -646 (-645 actual)

===

The focal plane temperature is approximately -100 C during this observation. This reprocessing of the data applies no CTI correction because none is available for this temperature at present.

The ACIS CTI correction has not been calibrated at this temperature, because it was early in the mission, and ACIS had not yet been lowered to the standard -119.7 C. Both front and back illuminated chips are affected. However a T_GAIN correction has been applied to the BI chips (ACIS-5 and ACIS-7) data included here.

The ACIS spectral response calibration is less accurate at these warmer temperatures than it is at -119.7 C. Users whose science objectives depend on the most accurate spectral response (ie: fitting line-rich spectra) may notice an effect. Users whose science objectives do not depend on the most accurate spectral response should not notice an effect.