

# V&V Reference Report

## L2 ASCDS Version : 8.5

Observation 4705 - L2 Version 3  
Chandra X-Ray Center

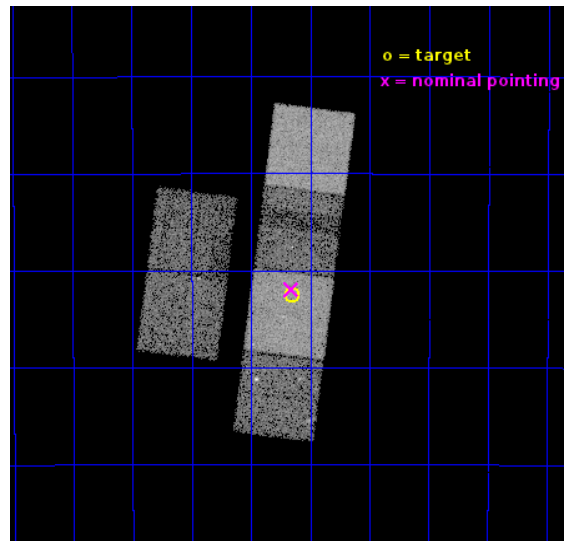
L2 Processing Date : Dec 6 2012

## Contents

<b>1</b>	<b>Front</b>	<b>2</b>
<b>2</b>	<b>OBI</b>	<b>3</b>
2.1	OBI . . . . .	3
2.1.1	Images . . . . .	3
2.1.2	Bias . . . . .	3
2.1.3	Parameters . . . . .	4
2.1.4	Events . . . . .	4
2.2	Compared Parameters . . . . .	5
2.3	Aspect . . . . .	6
2.4	Star Slots . . . . .	9
2.4.1	Slot 3 . . . . .	9
2.4.2	Slot 4 . . . . .	10
2.4.3	Slot 5 . . . . .	11
2.4.4	Slot 6 . . . . .	12
2.4.5	Slot 7 . . . . .	13
2.5	FID Slots . . . . .	14
2.5.1	Slot 0 . . . . .	14
2.5.2	Slot 1 . . . . .	15
2.5.3	Slot 2 . . . . .	16
<b>A</b>	<b>Summary</b>	<b>17</b>
A.1	Status . . . . .	17
A.2	Comments . . . . .	17

# 1 Front

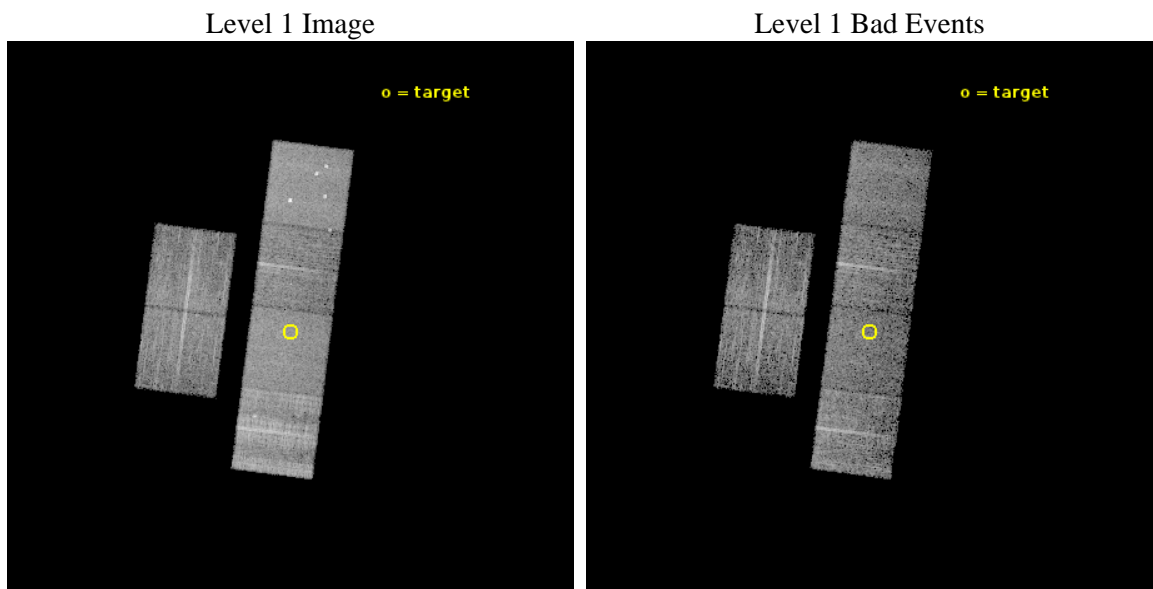
seq_num	600360	Sequence number
obs_id	4705	Observation id
title	Using the Sculptor Dwarf Spheroidal Galaxy to Constrain X-ray Binary Production in Population II	Proposal title
observer	Dr Thomas Maccarone	Principal investigator
object	SCULPTOR DWARF SPHEROIDAL	Source name
dtcycle	0	&#160
cycle	P	events from which exps? Prim/Second/Both
ra_targ	15.039167	Observer's specified target RA [deg]
dec_targ	-33.708889	Observer's specified target Dec [deg]
ra_nom	15.03974461592	Nominal RA [deg]
dec_nom	-33.69919933786	Nominal Dec [deg]
roll_nom	97.341522059636	Nominal Roll [deg]
revision	3	Processing version of data
ontime	5907.199977994	Sum of GTIs [s]
livetime	5832.3994549838	Livetime [s]
ontime2	5907.199977994	Sum of GTIs [s]
ontime3	5907.199977994	Sum of GTIs [s]
ontime5	5907.199977994	Sum of GTIs [s]
ontime6	5907.199977994	Sum of GTIs [s]
ontime7	5907.199977994	Sum of GTIs [s]
ontime8	5903.95910725	Sum of GTIs [s]
l2events	93748	Number of level 2 events



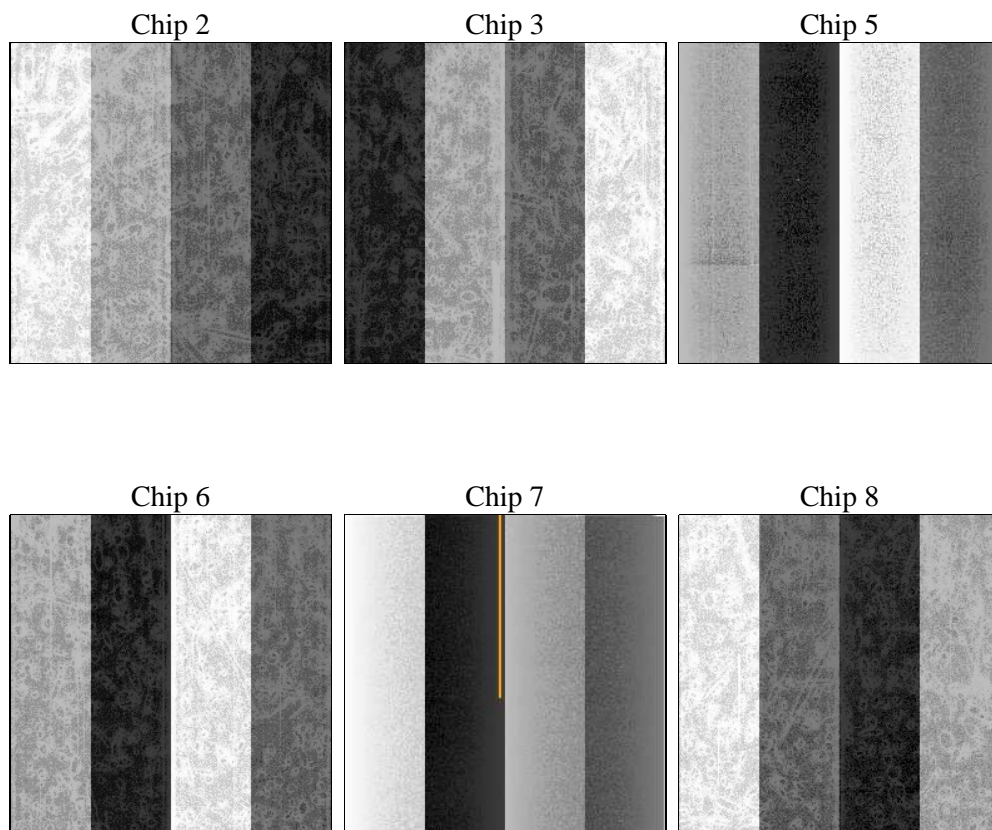
## 2 OBI

### 2.1 OBI

#### 2.1.1 Images



#### 2.1.2 Bias



### 2.1.3 Parameters

obi_num	0	Obi number	sched_exp_time	5953.000000	[s] Scheduled observation exposure time
ascdsver	8.5	Processing system revision	ontime	5907.199977994	Sum of GTIs [s]
caldsver	4.5.4	&#160	ontime2	5907.199977994	Sum of GTIs [s]
date	2012-12-06T10:56:02	Date and time of file creation	ontime3	5907.199977994	Sum of GTIs [s]
revision	3	Processing version of data	ontime5	5907.199977994	Sum of GTIs [s]
			ontime6	5907.199977994	Sum of GTIs [s]
			ontime7	5907.199977994	Sum of GTIs [s]
			ontime8	5903.95910725	Sum of GTIs [s]
			l1events	356626	Number of level 1 events

### 2.1.4 Events

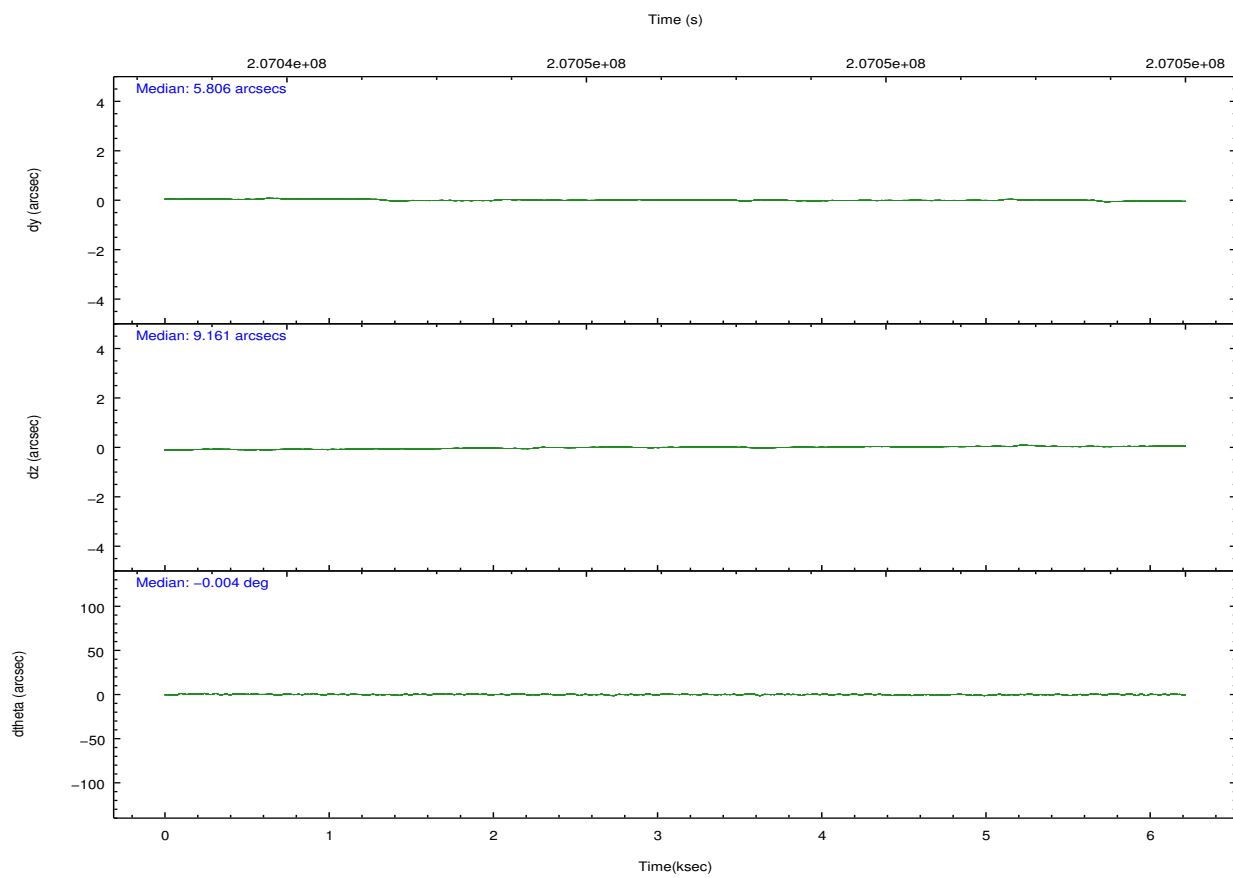
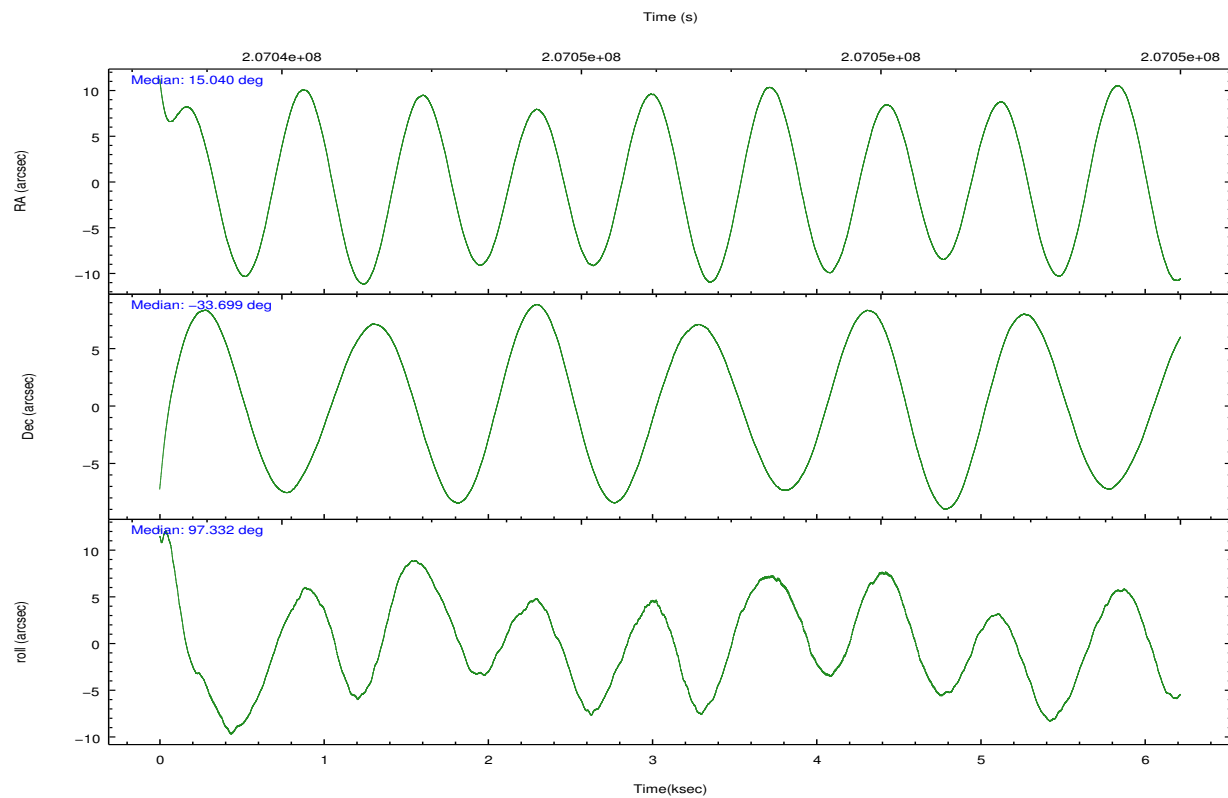
	ccd 2	ccd 3	ccd 5	ccd 6	ccd 7	ccd 8		ccd 2	ccd 3	ccd 5	ccd 6	ccd 7	ccd 8
level 1 events	49130	47825	69044	47828	59971	82828	grade 0 events	4479	4370	5469	4665	3069	15625
rejected events	39858	38219	34812	37664	31928	43435		9%	9%	7%	9%	5%	18%
rejected %	81%	79%	50%	78%	53%	52%	grade 1 events	33	39	188	25	59	115
								0%	0%	0%	0%	0%	0%
							grade 2 events	2039	2540	10023	2877	5824	5637
								4%	5%	14%	6%	9%	6%
							grade 3 events	486	549	1642	507	2465	6238
								0%	1%	2%	1%	4%	7%
							grade 4 events	663	510	1549	530	2523	5700
								1%	1%	2%	1%	4%	6%
							grade 5 events	1620	1702	4675	1749	5126	2475
								3%	3%	6%	3%	8%	2%
							grade 6 events	1617	1648	15595	1594	14208	6225
								3%	3%	22%	3%	23%	7%
							grade 7 events	38193	36467	29903	35881	26697	40813
								77%	76%	43%	75%	44%	49%



## 2.2 Compared Parameters

Parameter	Planned	Actual	Parameter	Planned	Actual
Instrument	ACIS	ACIS	Obspar format version number	7	7
Detector	ACIS-235678	ACIS-235678	Obspar file type	PREDICTED	ACTUAL
Grating	NONE	NONE	Obspar update status	NONE	UPDATED
Data mode	VFAINT	VFAINT	Number of optional ACIS chips dropped	0	0
Observation mode	POINTING	POINTING	On-chip summing requested	N	N
[deg] Pointing RA	15.059936	15.03974461592047	Subarray requested	NONE	NONE
[deg] Pointing Dec	-33.720648	-33.6991993378598	Alternating exposures requested	N	N
[deg] Pointing Roll	97.196099	97.34152205963582	[s] Primary exposure time	0.000000	3.2
[mm] SIM focus pos	-0.684267	-0.6828225247311905			
[mm] SIM defocus	0	0.001444936568705701			
[mm] SIM translation stage pos	-190.132523	-190.1400660498719			
[mm] SIM translation stage offset	0	0.00754346686406393			
[s] Observation start time (MET)	207043750.184000	207042747.34089			
Observation start date	2004-07-24T08:08:06	2004-07-24T07:52:27			
[s] Observation end time (MET)	207049703.184000	207050557.32874			
Observation end date	2004-07-24T09:47:19	2004-07-24T10:02:37			
Read mode	TIMED	TIMED			

## 2.3 Aspect

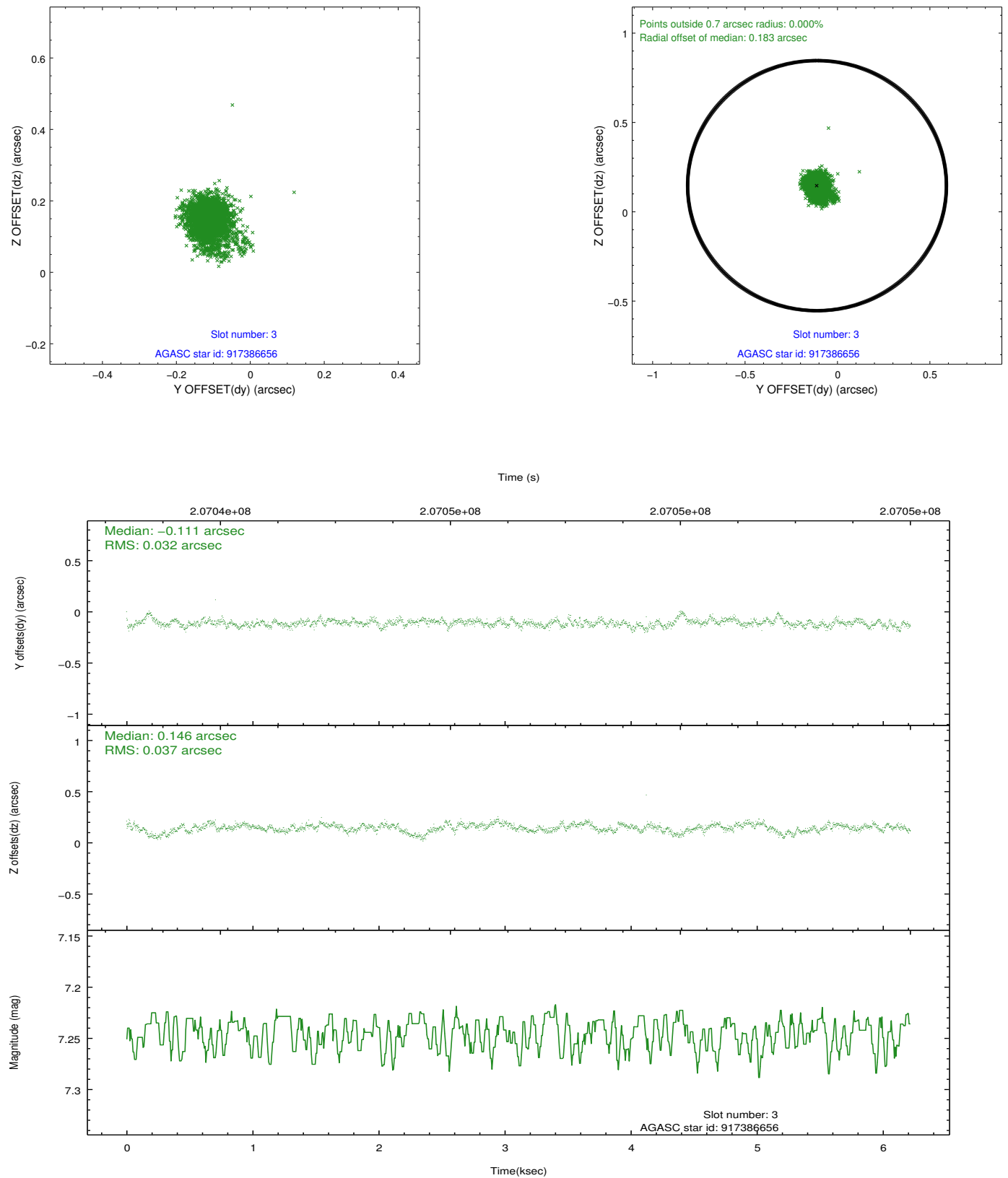


### Slot Statistics

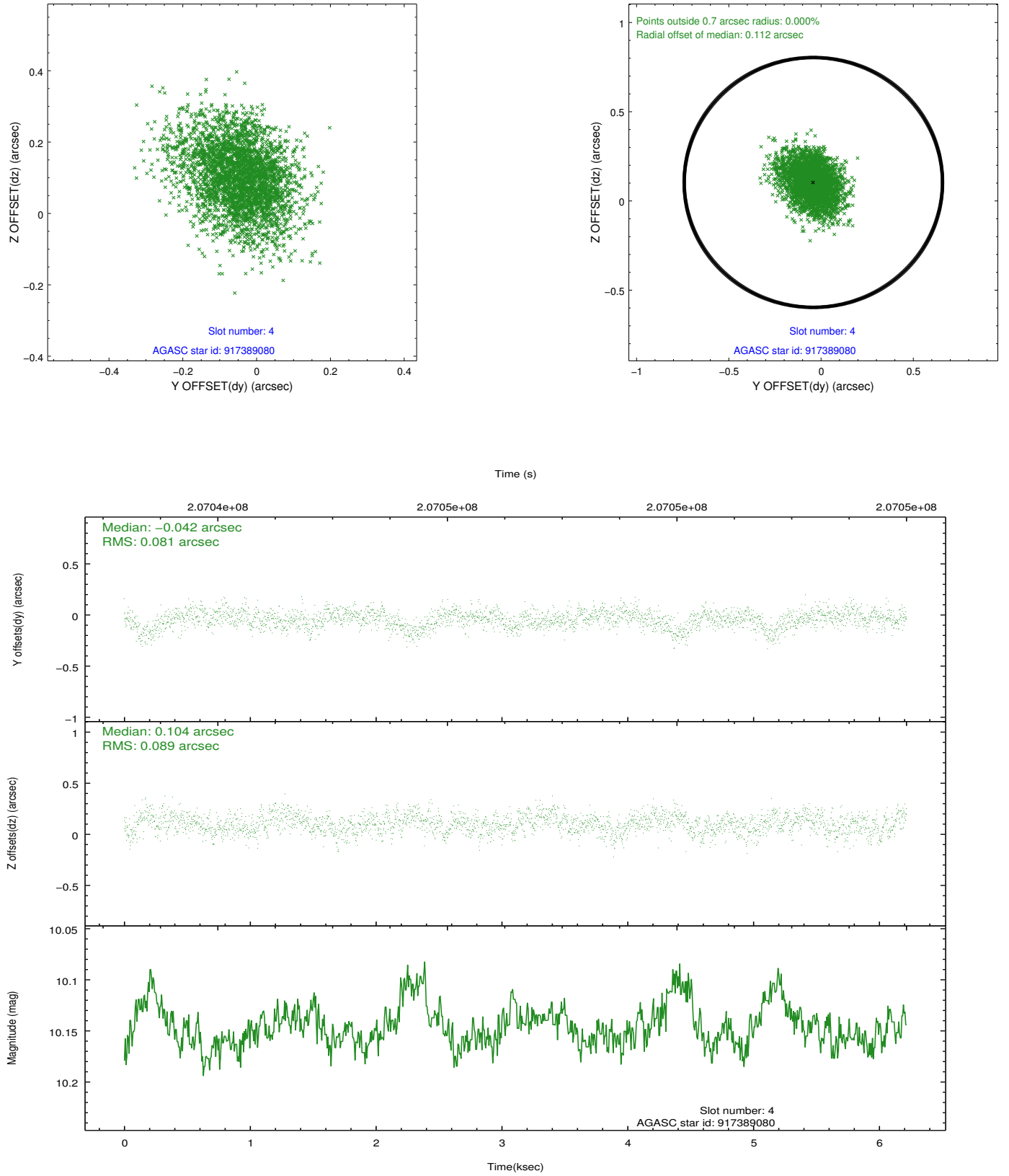
slot	status	id	mag	n_pts	med_dy	med_dz	dr1	dr2	ra	dec	mean_y	mean_z
0	FID	ACIS-S-1	7.18	1517	0.022	-0.001	0.007	0.011	0.000000	0.000000	937.50	-1726.02
1	FID	ACIS-S-5	7.23	1517	-0.080	0.015	0.006	0.011	0.000000	0.000000	-1811.03	170.63
2	FID	ACIS-S-6	7.35	1517	0.036	-0.003	0.007	0.013	0.000000	0.000000	402.09	815.60
3	GUIDE	917386656	7.24	3034	-0.111	0.146	0.049	0.087	15.342124	-33.359890	1181.35	-1003.80
4	GUIDE	917389080	10.15	3032	-0.042	0.104	0.126	0.210	15.722484	-33.662555	-46.67	-1994.94
5	GUIDE	917389288	9.57	3027	-0.104	0.198	0.114	0.182	15.394706	-33.185862	1782.29	-1241.51
6	GUIDE	917650528	8.73	3032	0.093	-0.355	0.070	0.117	14.274554	-33.869842	-247.25	2396.94
7	GUIDE	917651048	9.65	3026	0.170	-0.084	0.103	0.169	14.655628	-34.424089	-2364.44	1509.35

## 2.4 Star Slots

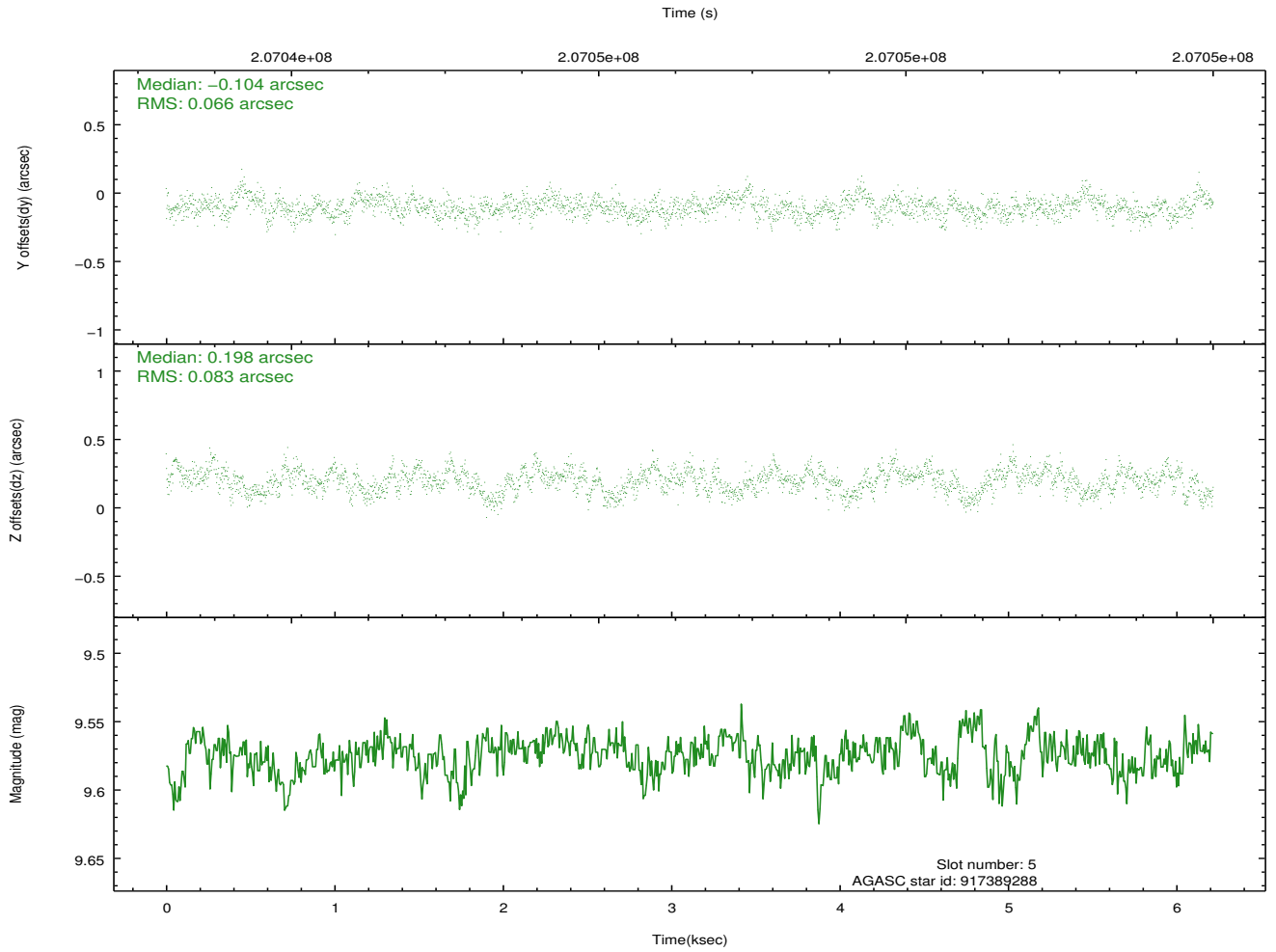
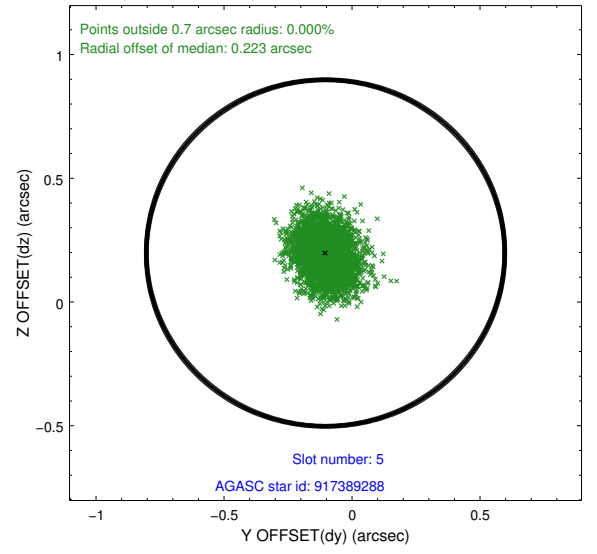
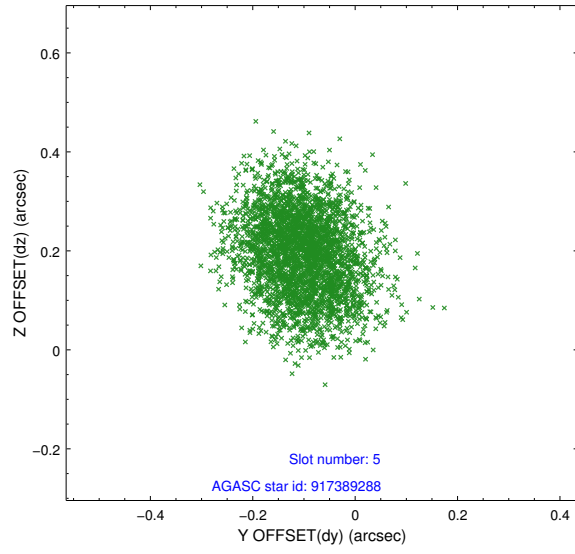
### 2.4.1 Slot 3



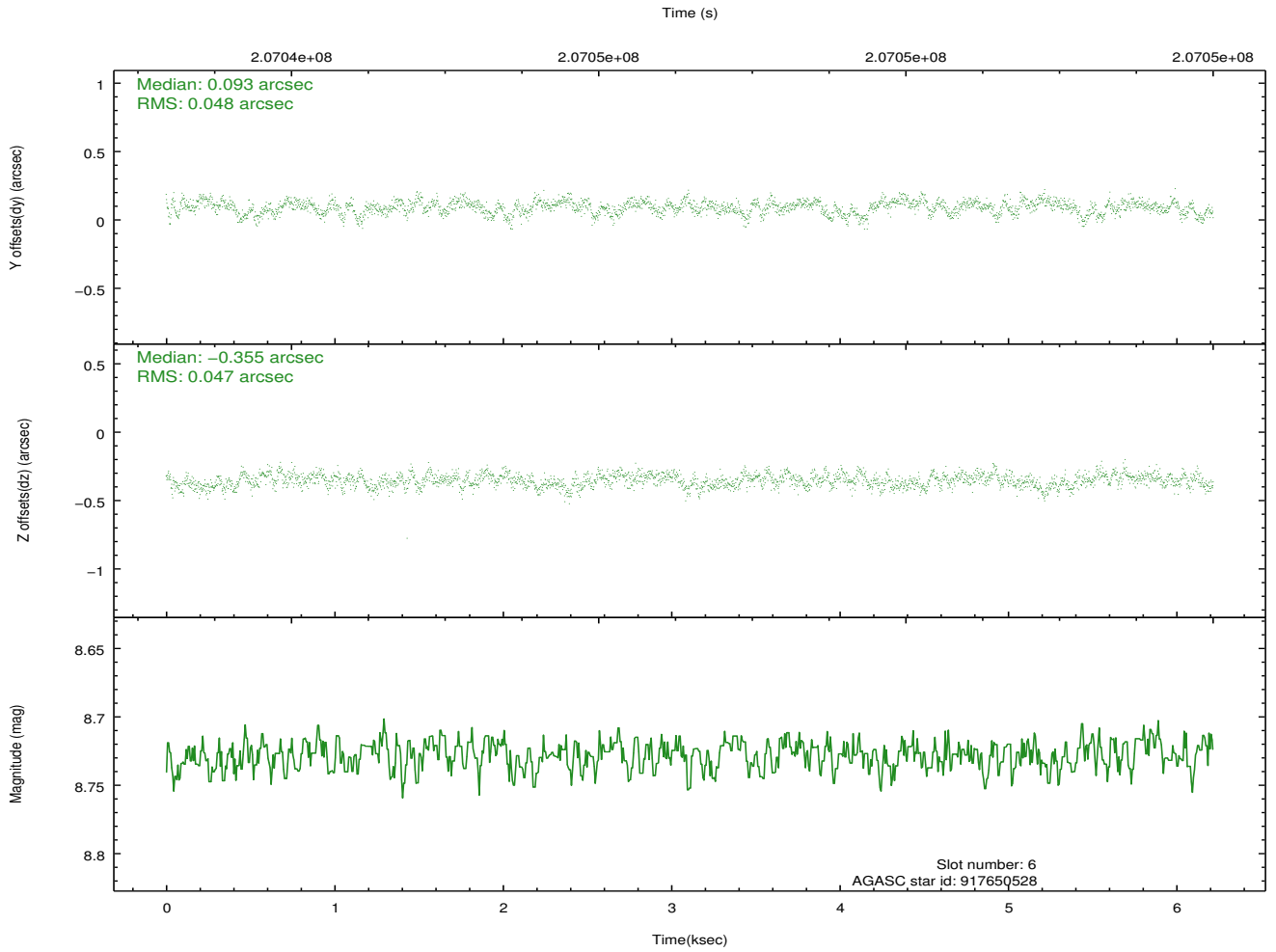
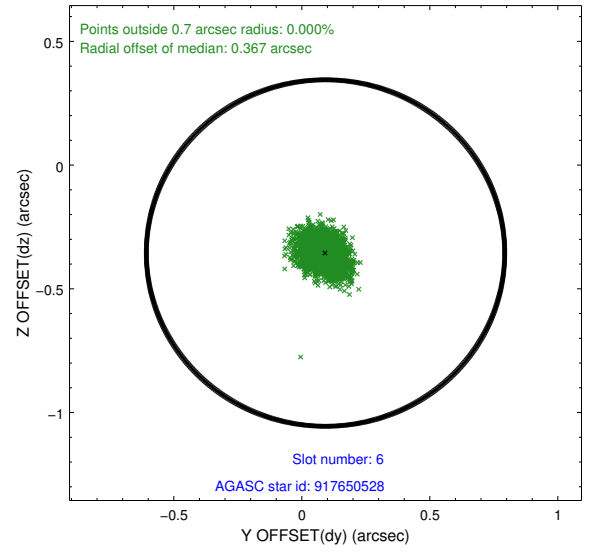
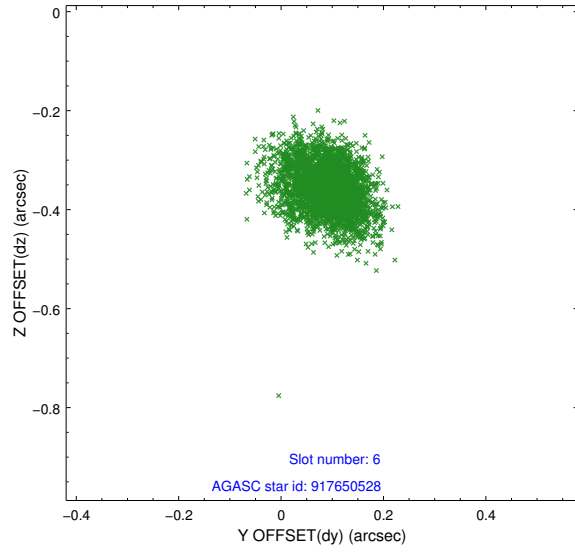
## 2.4.2 Slot 4



### 2.4.3 Slot 5

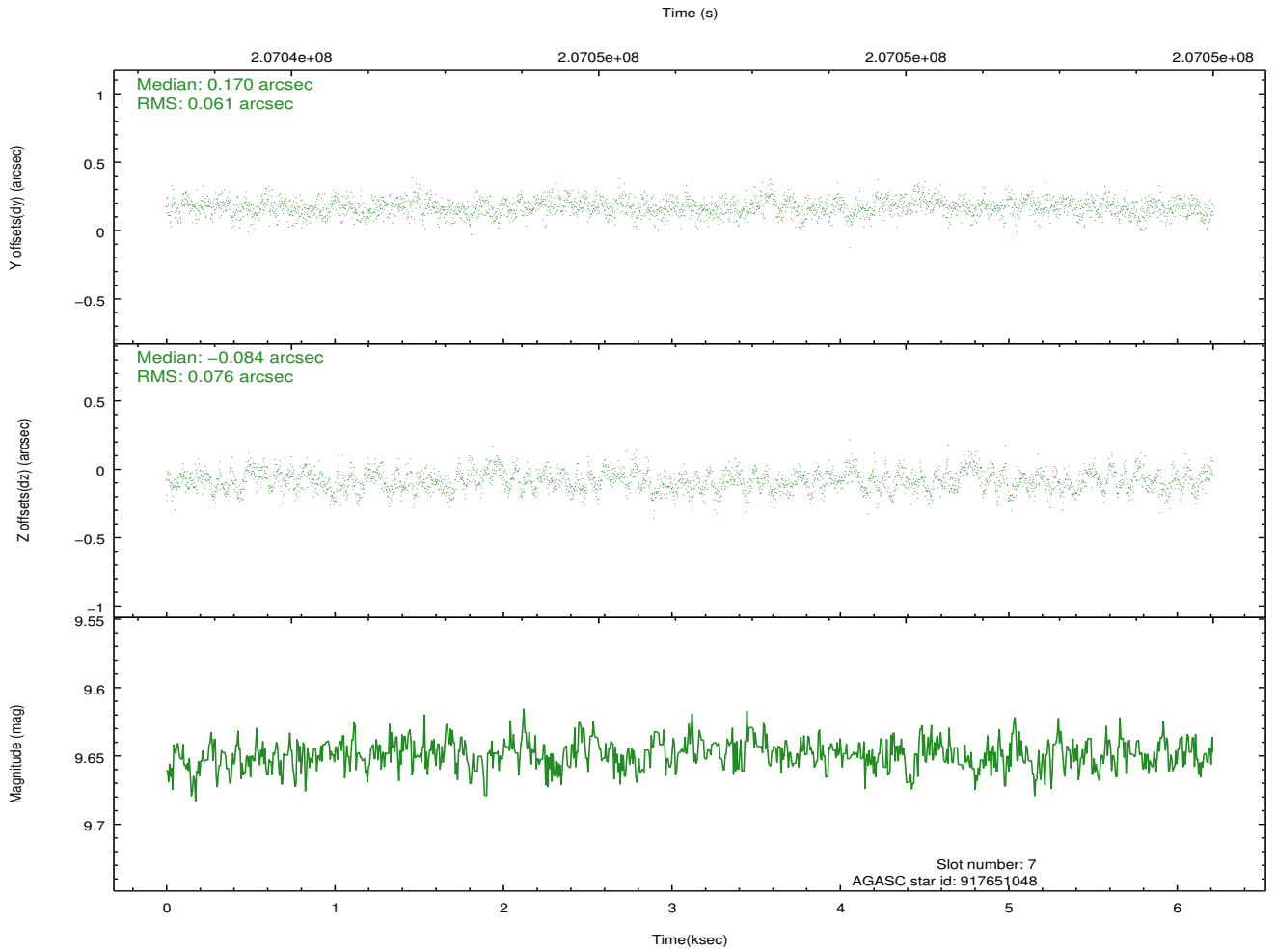
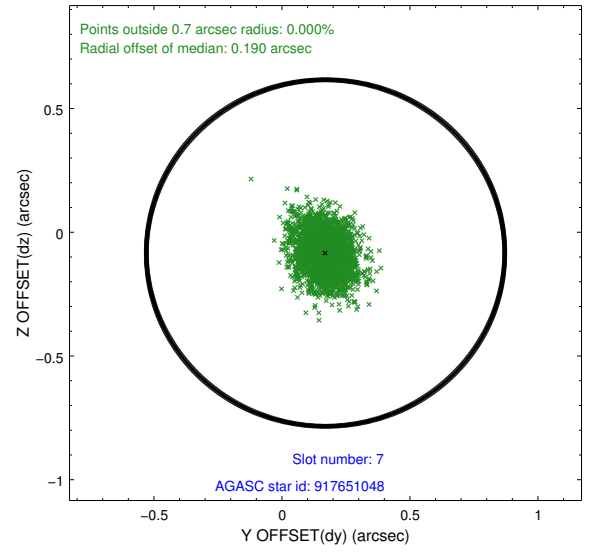
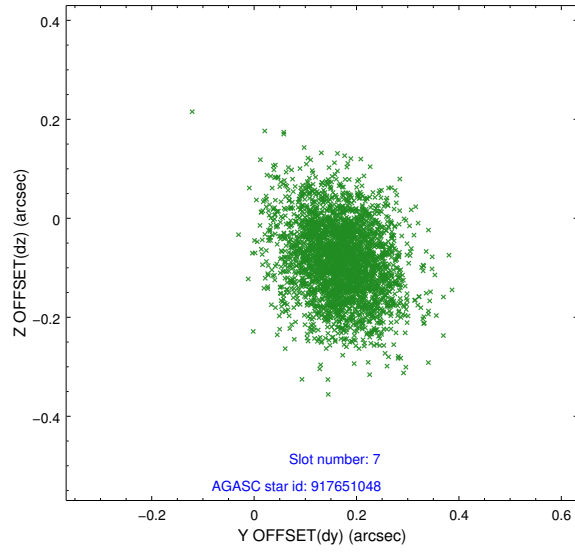


## 2.4.4 Slot 6



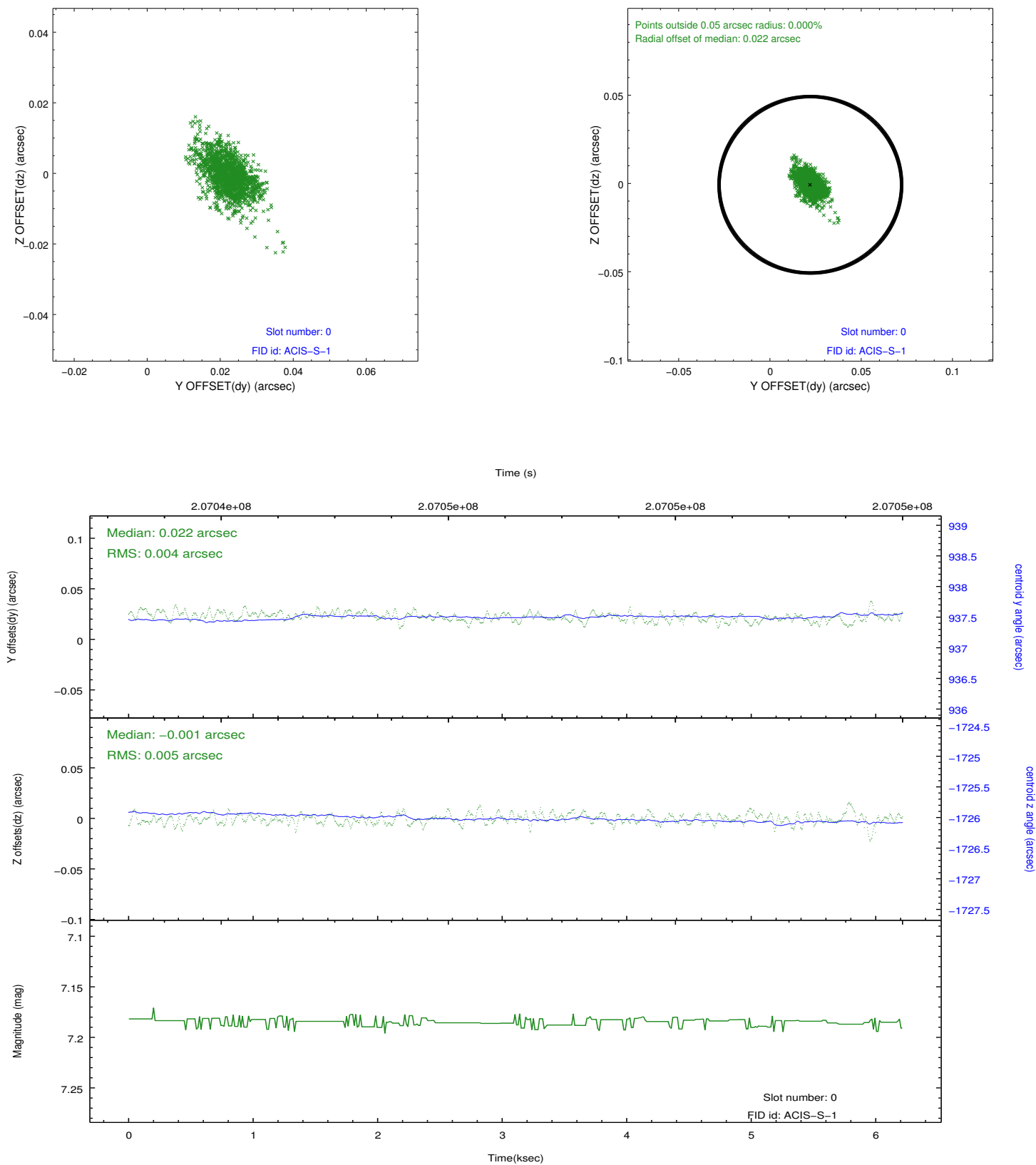


## 2.4.5 Slot 7

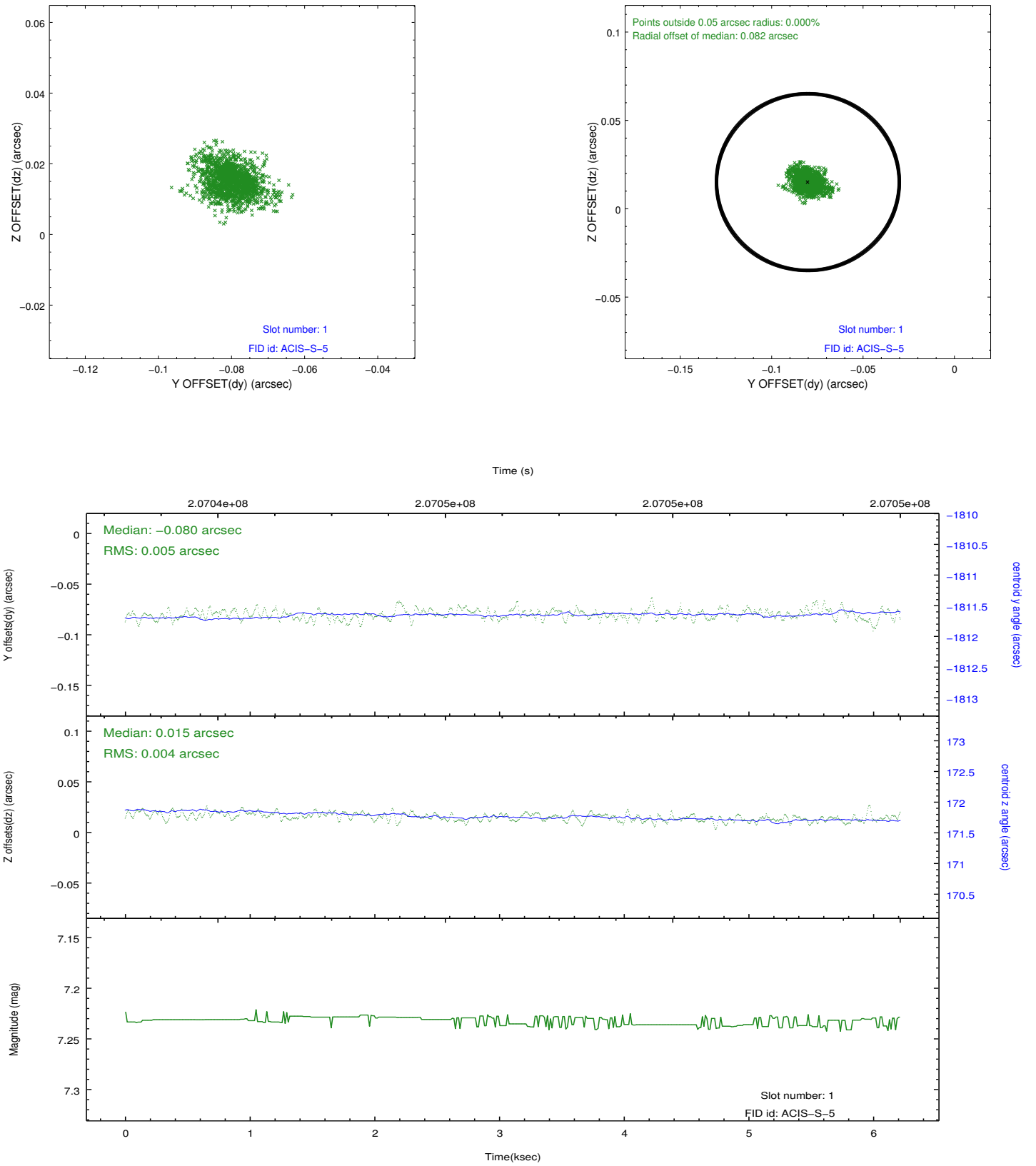


## 2.5 FID Slots

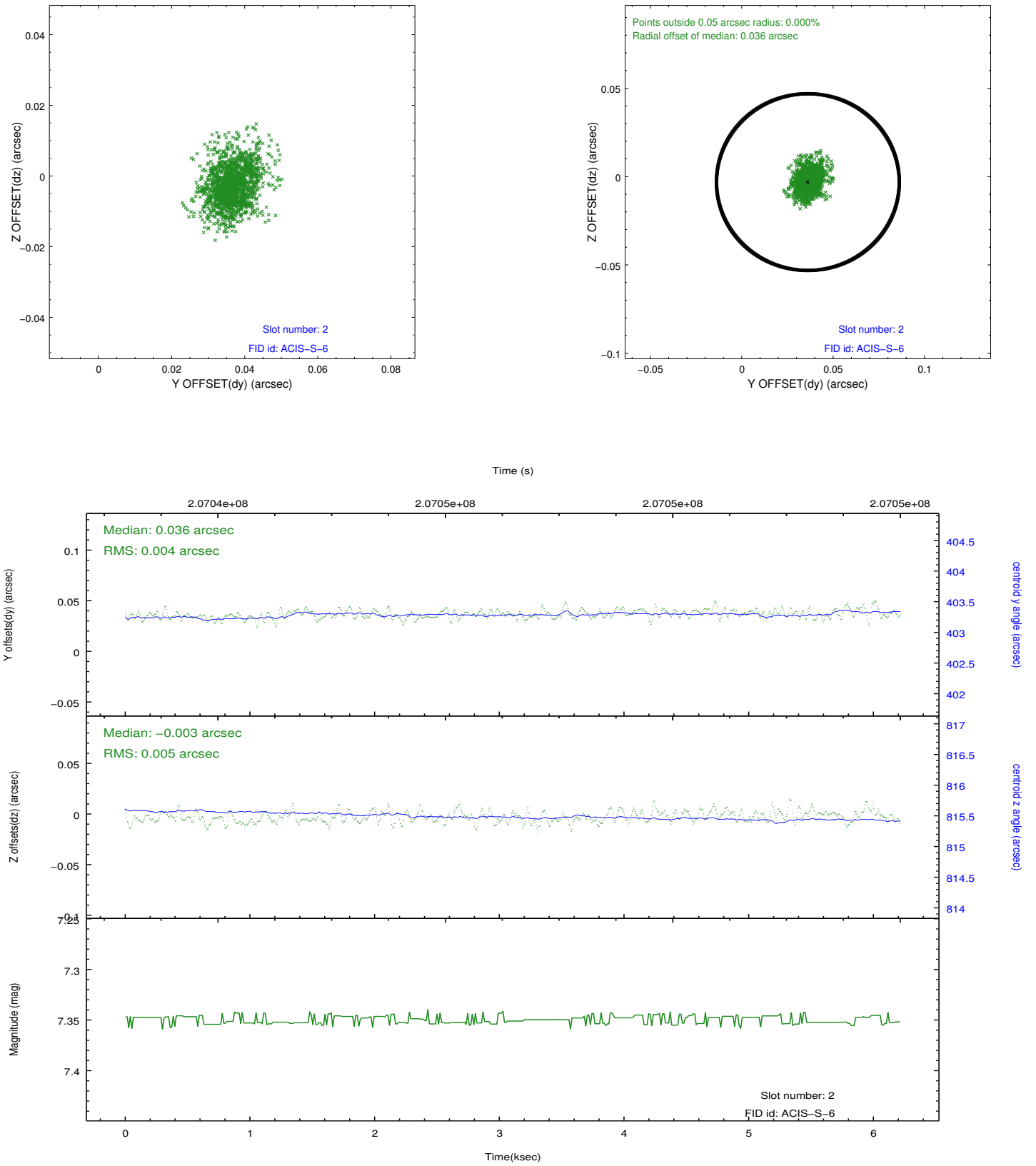
### 2.5.1 Slot 0



## 2.5.2 Slot 1



### 2.5.3 Slot 2



# A Summary

## A.1 Status

V&V Scientist	Beth Sundheim
V&V Date (YYYY-MM-DD)	2012.12.18
V&V Edition	1
V&V Disposition and Status	OK
V&V Charge Time	5.907

## A.2 Comments

Joint proposal with NOAO.