

V&V Reference Report

L2 ASCDS Version : 7.6.7.2

Observation 4595 - L2 Version 001
Chandra X-Ray Center

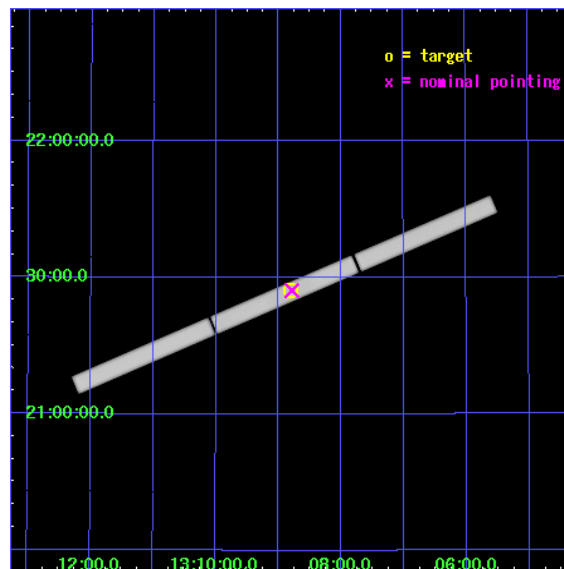
L2 Processing Date : May 27 2006

Contents

1	Front	2
2	OBI	3
2.1	OBI	3
2.1.1	Images	3
2.1.2	Parameters	4
2.1.3	Events	4
2.2	Compared Parameters	5
2.3	Aspect	6
2.4	Star Slots	9
2.4.1	Slot 3	9
2.4.2	Slot 4	10
2.4.3	Slot 5	11
2.4.4	Slot 6	12
2.4.5	Slot 7	13
2.5	FID Slots	14
2.5.1	Slot 0	14
2.5.2	Slot 1	15
2.5.3	Slot 2	16
3	Gratings	17
3.1	LETG Arm	17
A	Summary	19
A.1	Status	19
A.2	Comments	19

1 Front

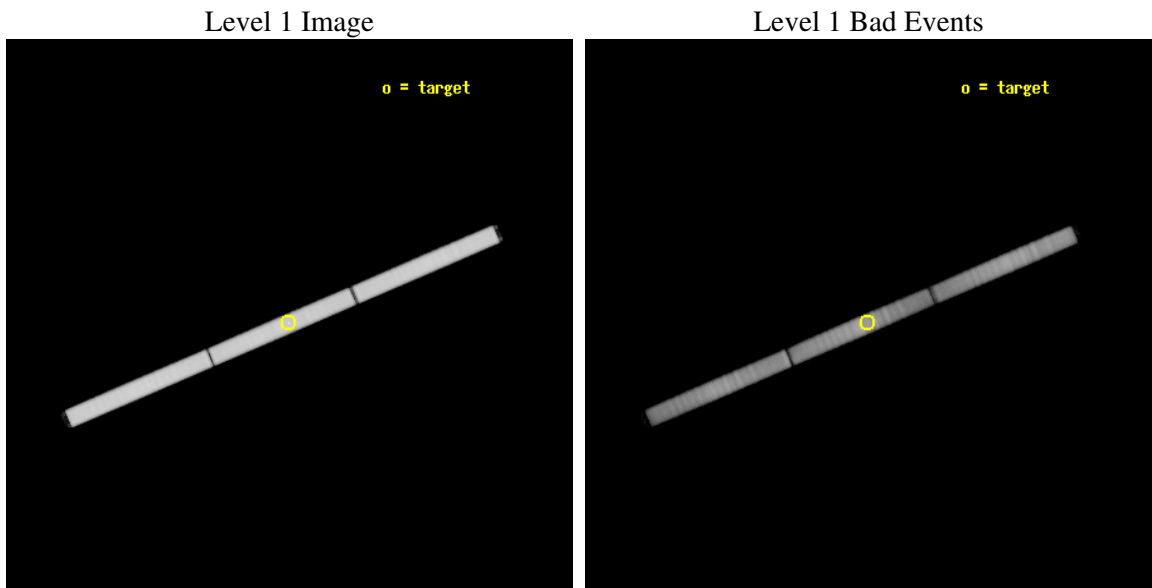
seq_num	500420
obs_id	4595
title	High Resolution investigation of a possible Cyclotron Absorption Line in RBS1223
observer	Dr. Peter Predehl
object	RBS1223
ra_targ	197.20125
dec_targ	21.451889
ra_nom	197.19669836388
dec_nom	21.453832886257
roll_nom	156.82600054225
revision	3
ontime	90829.610239387
livetime	90022.146962454
l2events	5523503



2 OBI

2.1 OBI

2.1.1 Images



2.1.2 Parameters

obi_num	0
ascdsver	7.6.7.2
caldbver	3.2.2
date	2006-05-27T09:53:58
revision	3

sched_exp_time	90504.493000
ontime	90907.253992796
l1events	7592620

2.1.3 Events

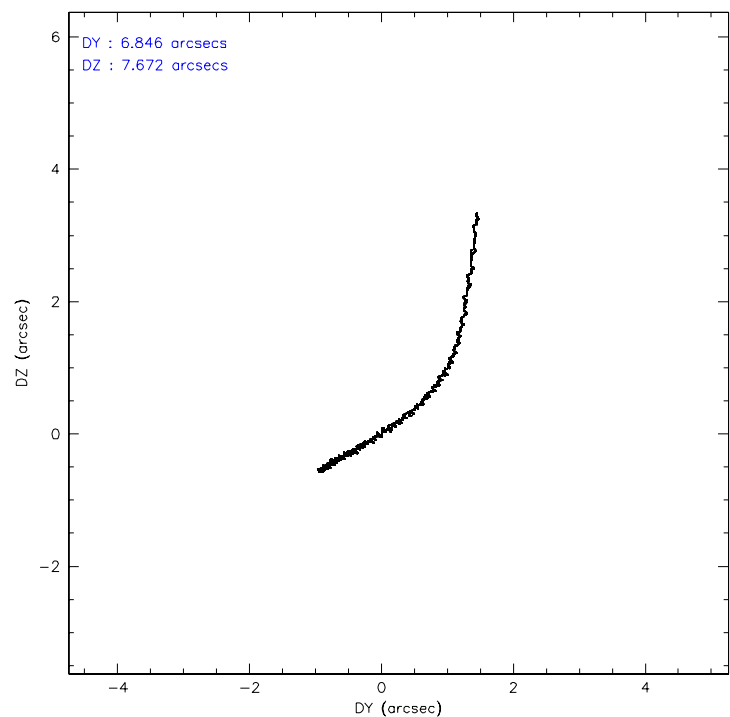
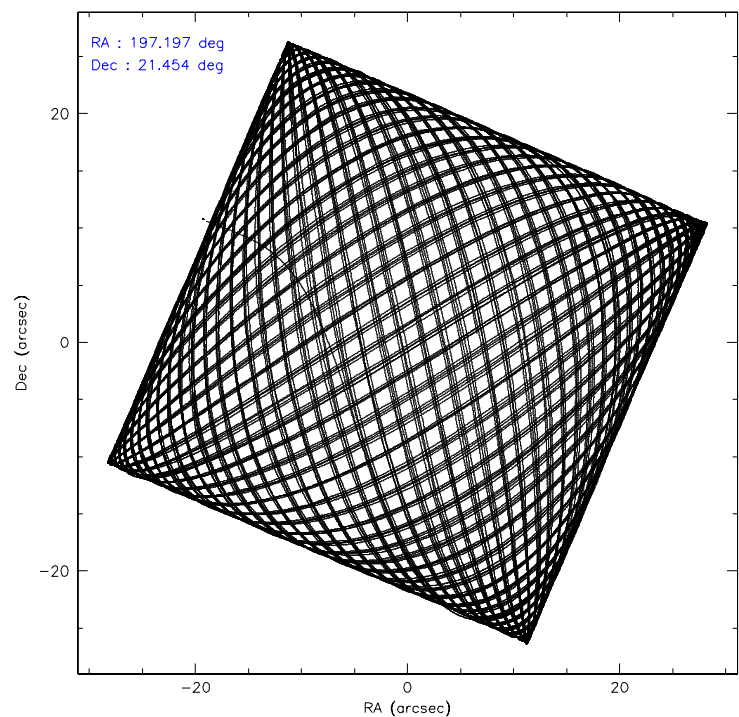
Level 1 Events

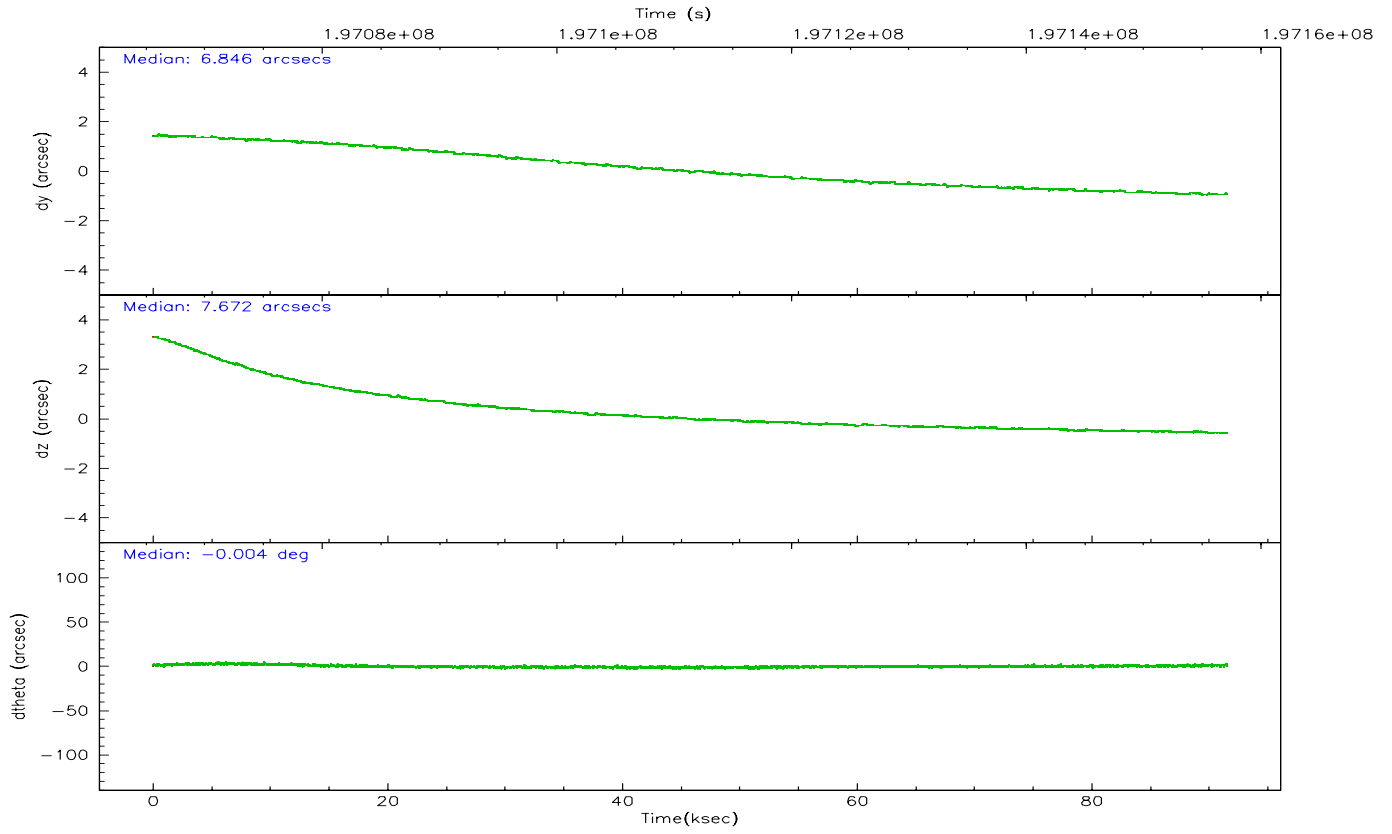
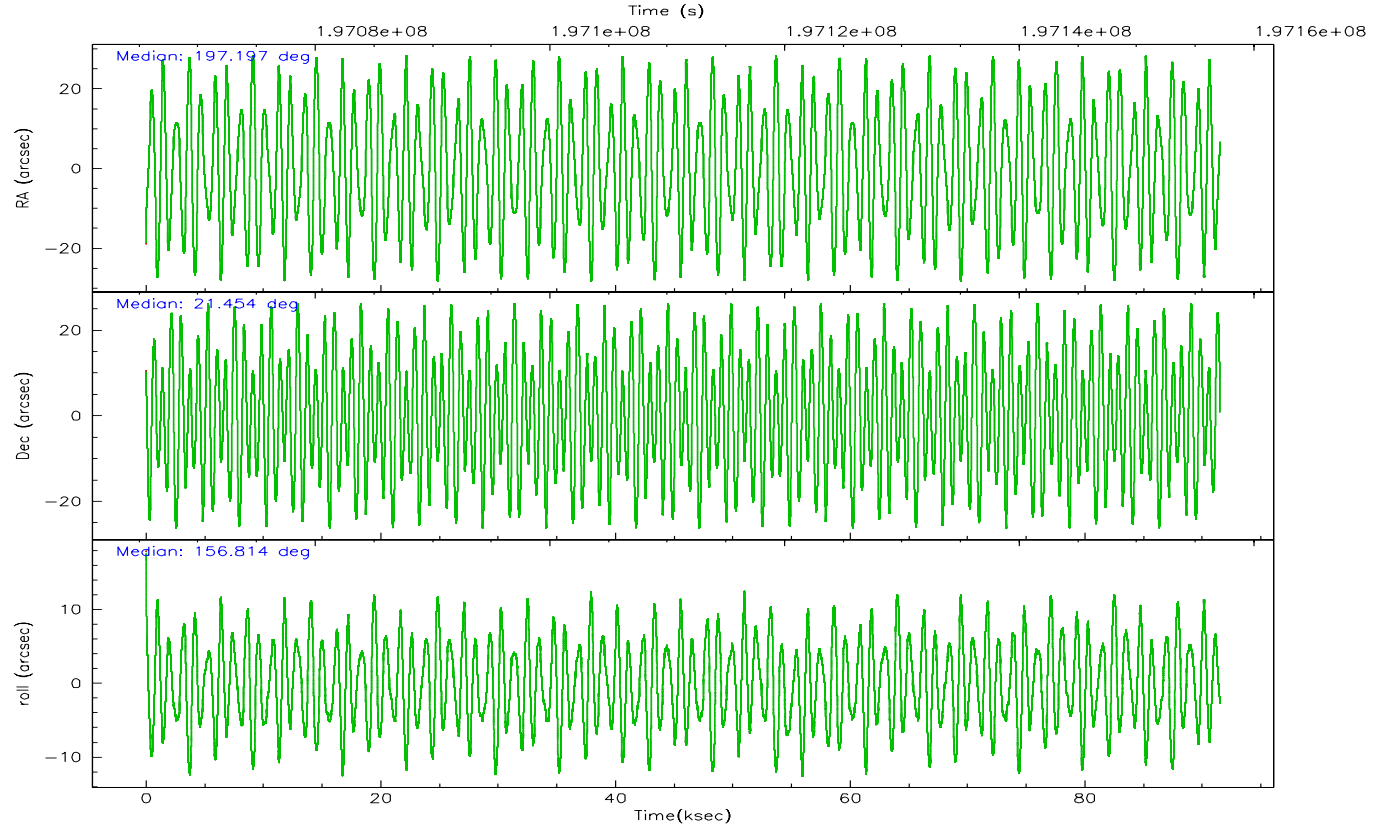
	segment 1	segment 2	segment 3
level 1 events	2617774	2459045	2515801
rejected events	424324	465196	523436
rejected %	16%	18%	20%

2.2 Compared Parameters

Parameter	Planned	Actual	Parameter	Planned	Actual
Instrument	HRC	HRC	Obspar format version number	6	6
Detector	HRC-S	HRC-S	Obspar file type	PREDICTED	ACTUAL
Grating	LETG	LETG	Obspar update status	NONE	UPDATED
Data mode	OBSERVING	OBSERVING			
Observation mode	POINTING	POINTING			
Pointing RA	197.226983	197.1966983638759			
Pointing Dec	21.458648	21.45383288625657			
Pointing Roll	156.747593	156.8260005422503			
SIM focus pos (mm)	-1.429586	-1.428180813131781			
SIM defocus (mm)	0.1037507710433287	0.1051558262725154			
SIM translation stage pos (mm)	250.455976	250.466033080201			
SIM translation stage offset (mm)	0	-0.01005468664627074			
Observation start time	197065713.184000	197064095.66245			
Observation start date	2004-03-30T20:27:29	2004-03-30T20:01:35			
Observation end time	197156218.184000	197158090.72908			
Observation end date	2004-03-31T21:35:54	2004-03-31T22:08:10			

2.3 Aspect



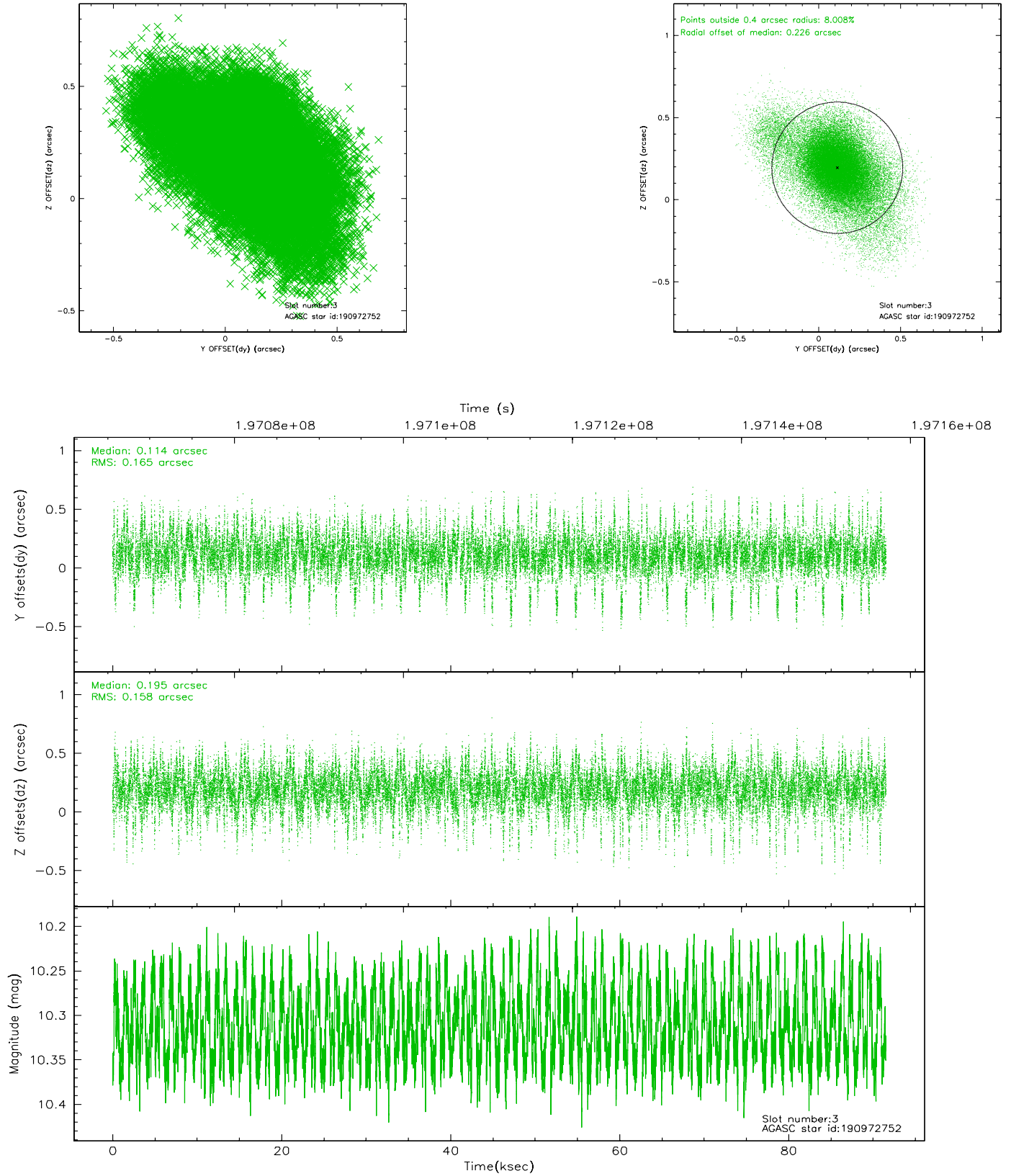


Slot Statistics

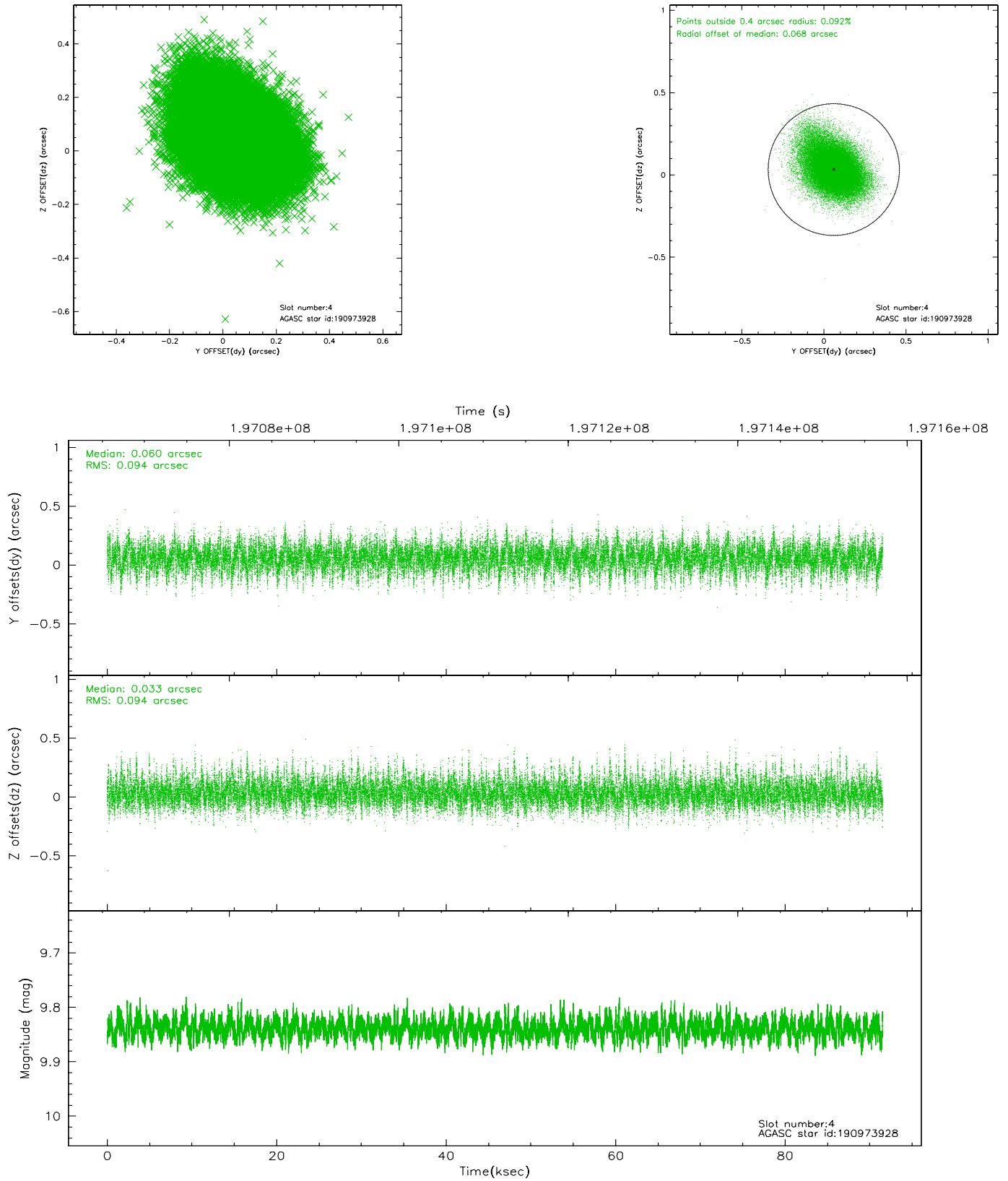
slot	status	id	mag	n_pts	med_dy	med_dz	dr1	dr2	ra	dec	mean_y	mean_z
0	FID	HRC-S-1	7.00	22325	0.105	-0.117	0.023	0.081	0.000000	0.000000	-1161.13	-456.64
1	FID	HRC-S-2	7.01	22325	0.150	-0.103	0.019	0.027	0.000000	0.000000	1238.53	-449.27
2	FID	HRC-S-3	7.02	22324	0.124	-0.084	0.017	0.074	0.000000	0.000000	-1163.79	572.93
3	GUIDE	190972752	10.31	44528	0.114	0.195	0.220	0.452	197.567107	21.351082	-1199.77	-94.94
4	GUIDE	190973928	9.84	44593	0.060	0.033	0.137	0.243	197.904188	21.564389	-1930.25	-1249.06
5	GUIDE	190977952	7.04	44573	-0.003	-0.175	0.076	0.120	197.718132	21.233753	-1833.01	91.07
6	GUIDE	190977688	7.91	44648	-0.034	-0.114	0.098	0.160	197.454100	20.653773	-1847.07	2360.01
7	GUIDE	190974376	6.78	44649	-0.136	0.062	0.073	0.130	197.884749	21.918670	-1362.39	-2392.55

2.4 Star Slots

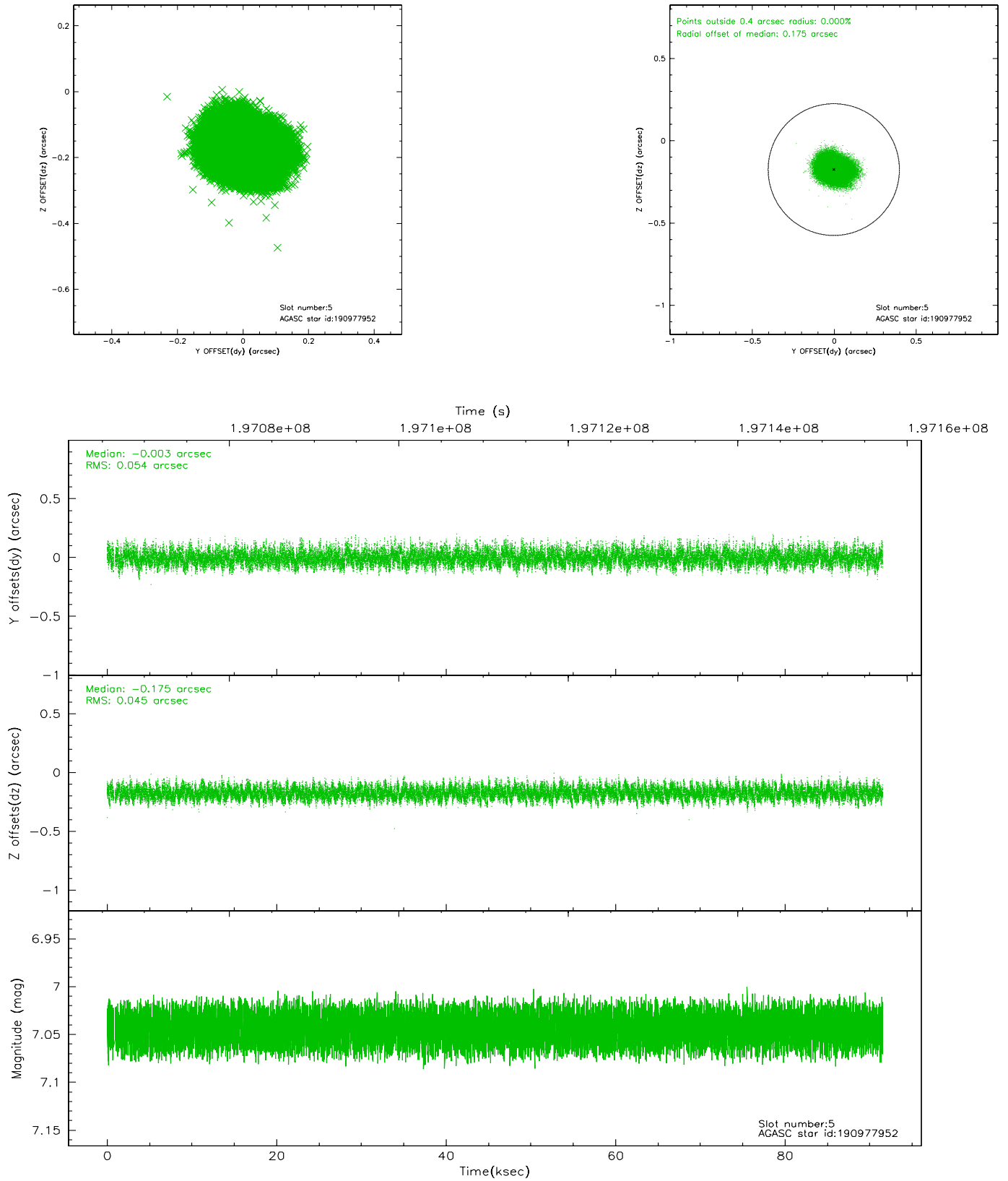
2.4.1 Slot 3



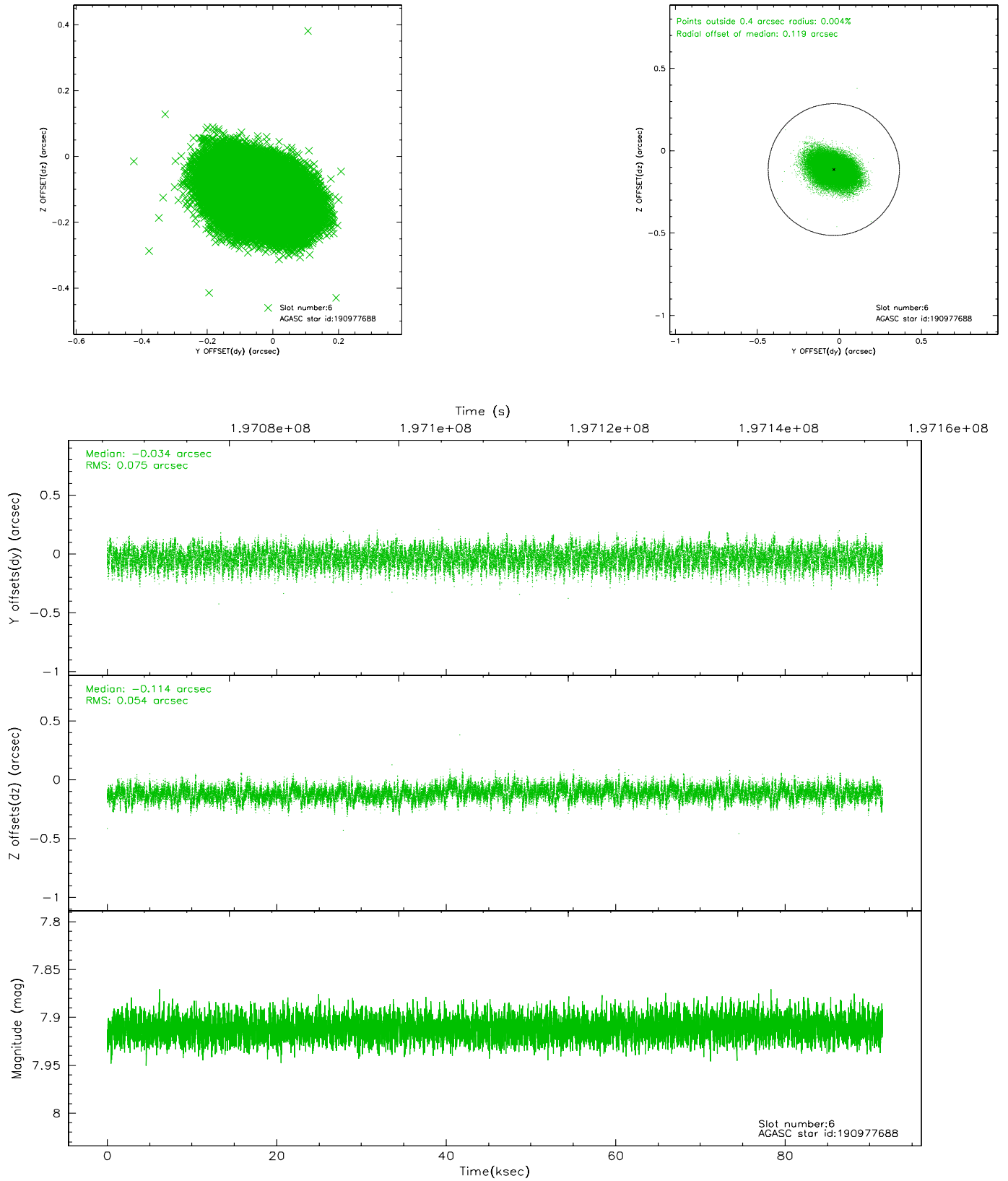
2.4.2 Slot 4



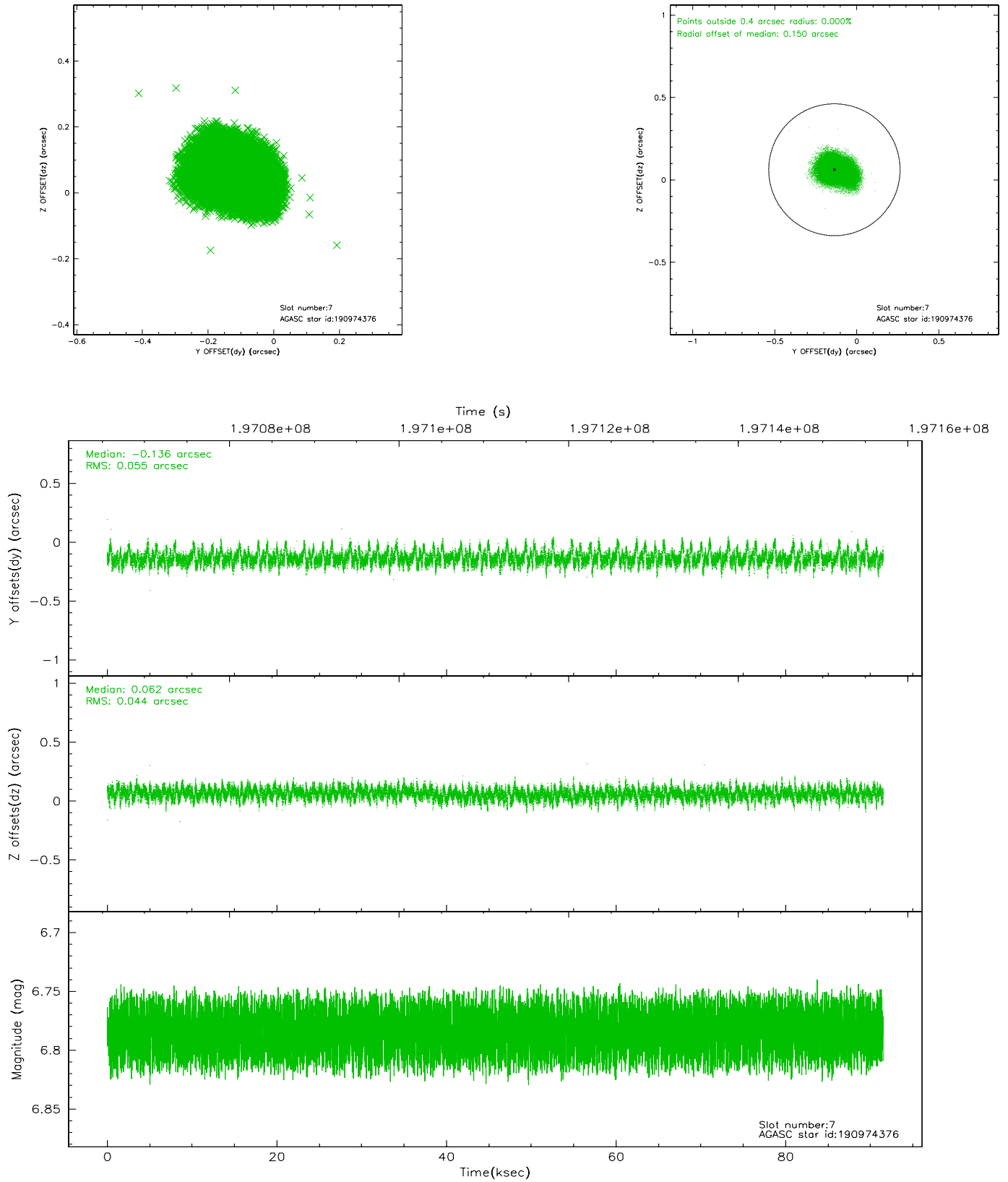
2.4.3 Slot 5



2.4.4 Slot 6

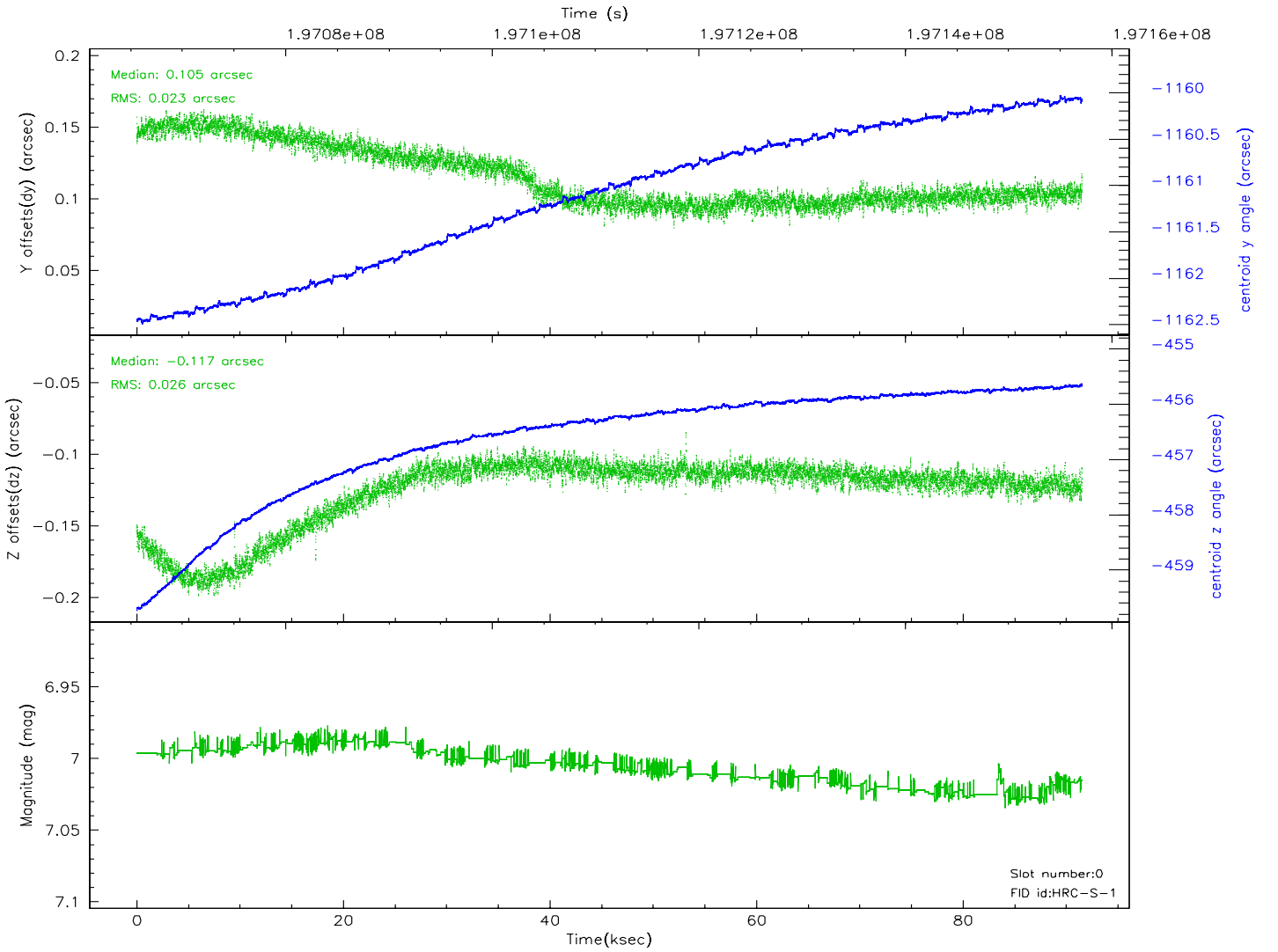
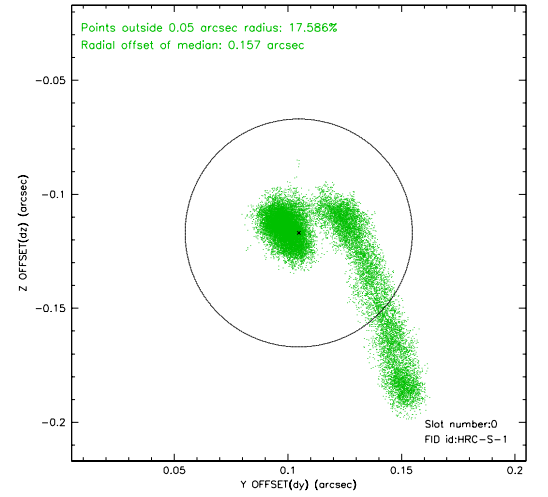
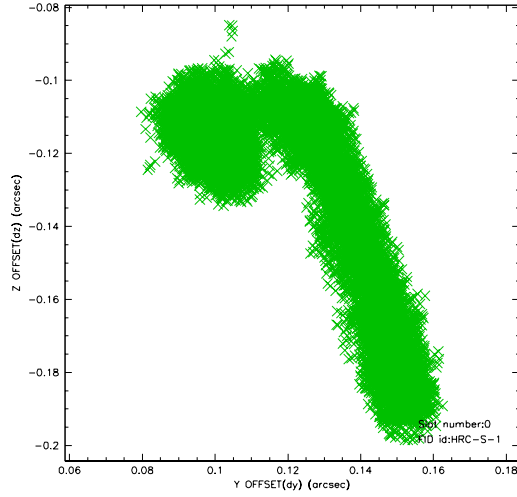


2.4.5 Slot 7

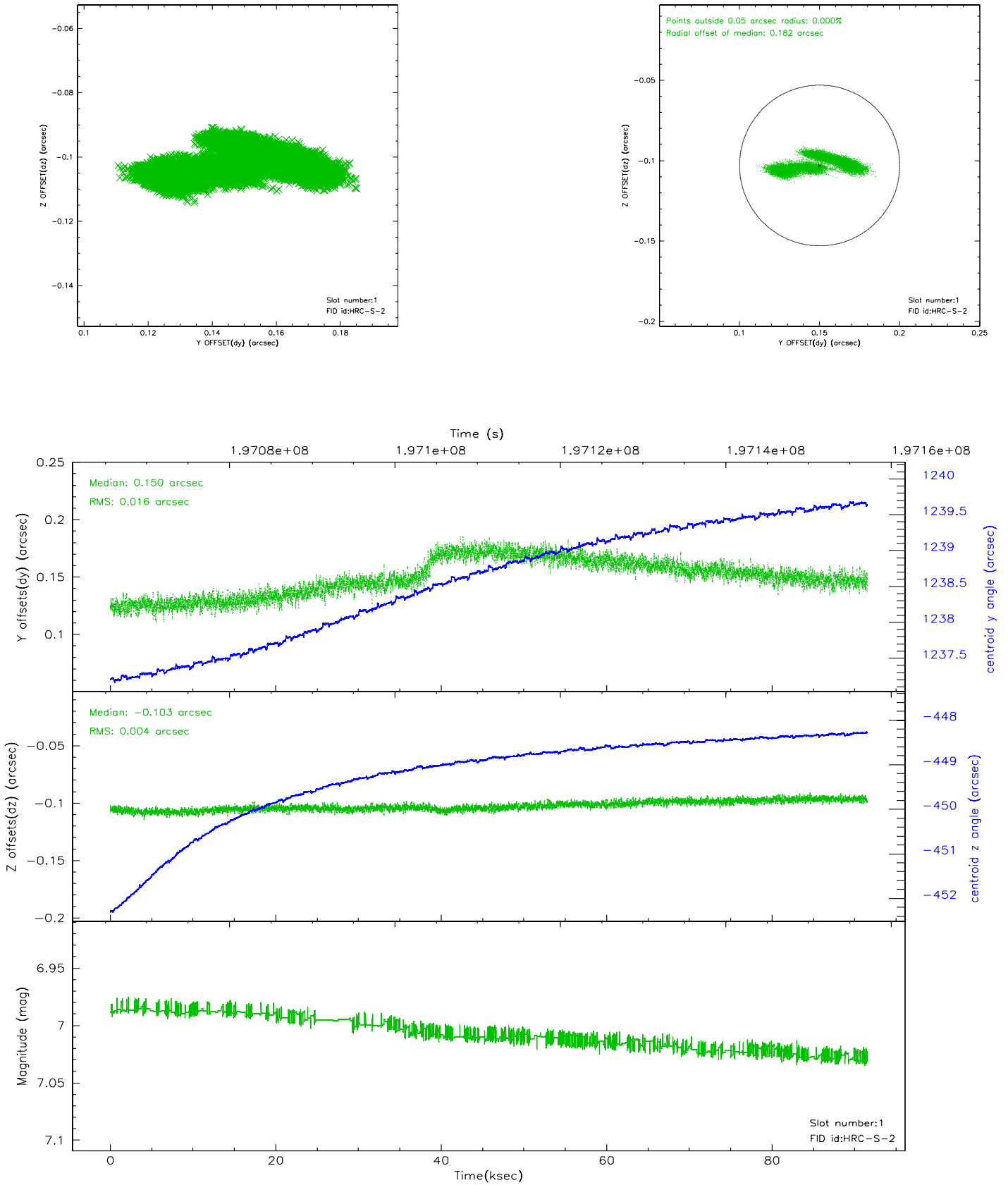


2.5 FID Slots

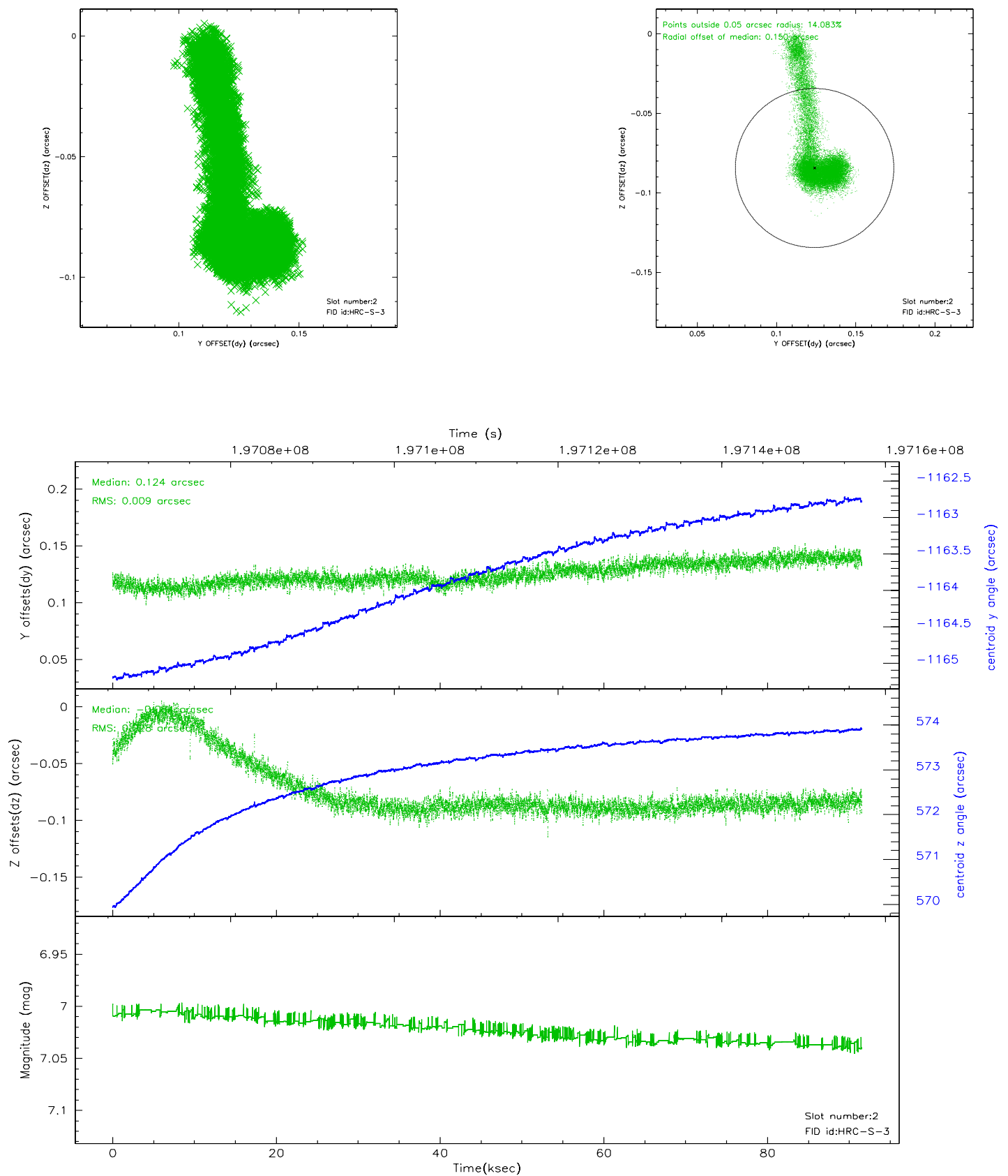
2.5.1 Slot 0



2.5.2 Slot 1

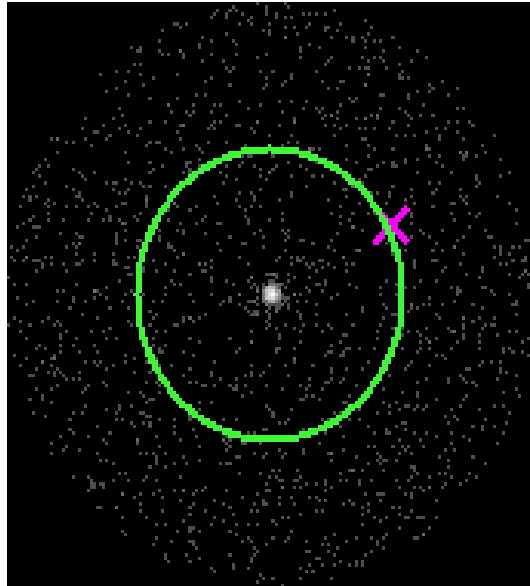


2.5.3 Slot 2

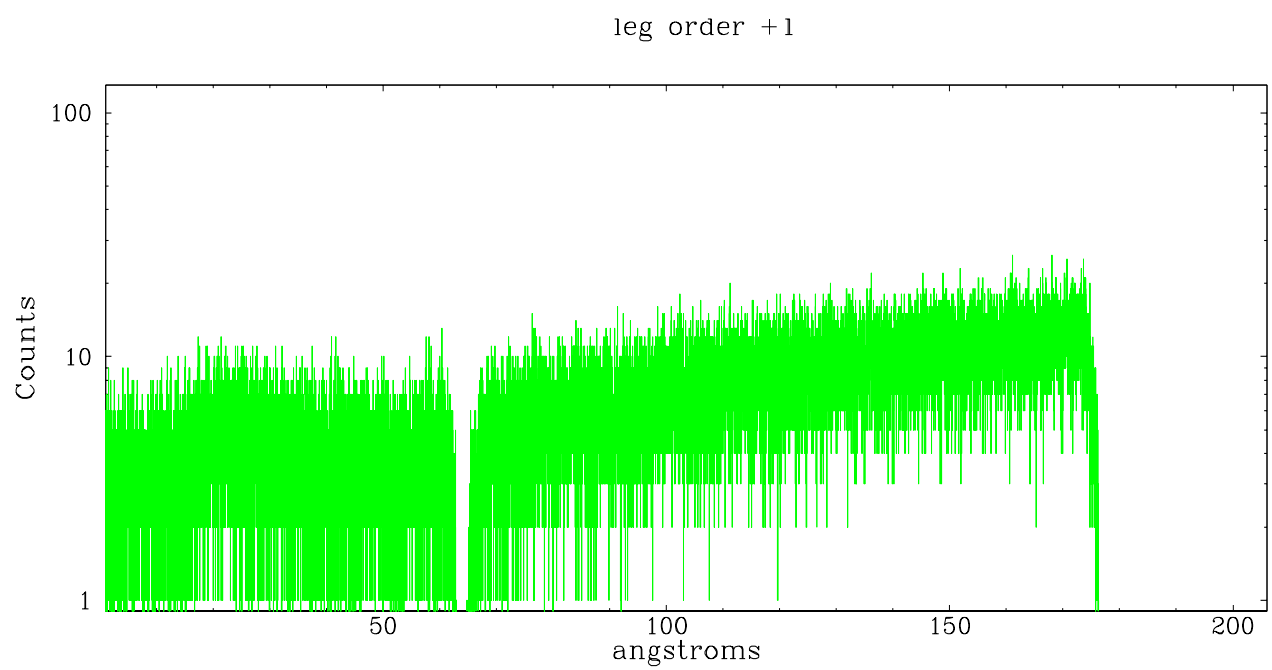
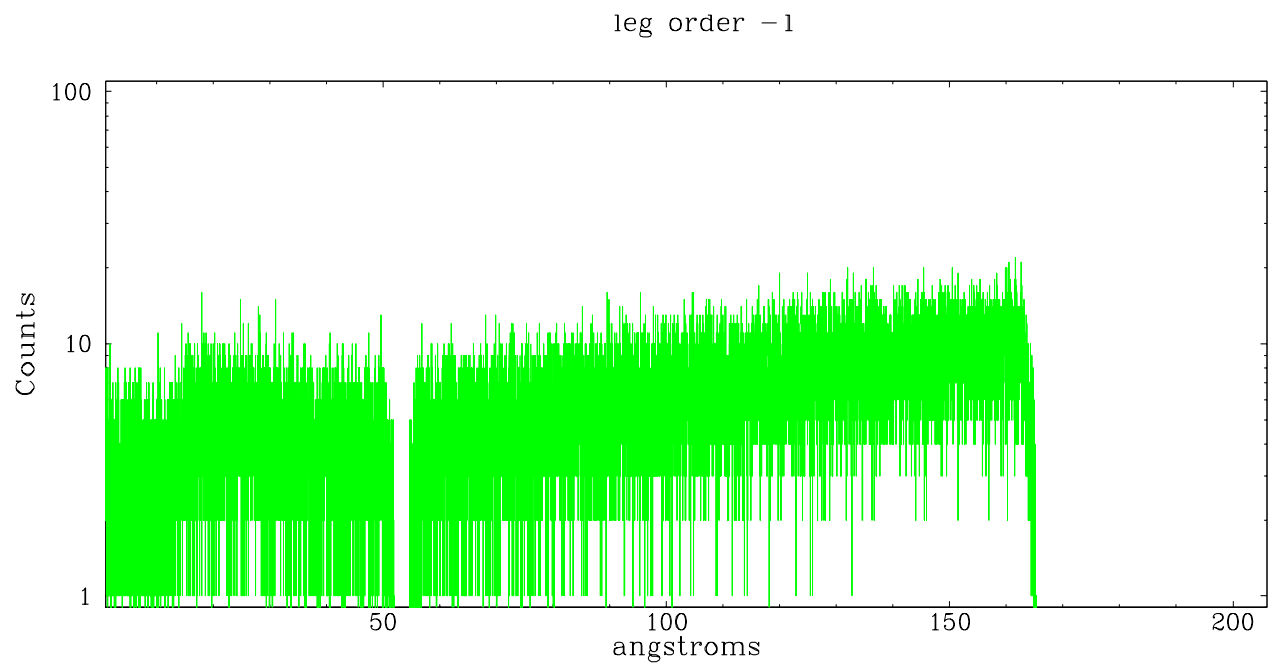


3 Gratings

3.1 LETG Arm



LETG Zero Order



A Summary

A.1 Status

V&V Scientist	Jen Lauer
V&V Date (YYYY-MM-DD)	2006.05.30
V&V Edition	1
V&V Disposition and Status	OK
V&V Charge Time	90.829

A.2 Comments

The keywords DTCOR, EXPOSURE, and LIVETIME in the Level 2 event file and the

keyword DTCOR in the Level 1 event file have been incorrectly determined due to a software bug. The correct value of DTCOR can be found in the file DTFSTATS file that can be obtained by downloading the Secondary Data Products. In most cases, the difference between the correct DTCOR value and the incorrect DTCOR value in the Level 2 event file is very small and does not affect the data analysis. However, there are cases of significant differences and the user is advised to use the DTCOR in the DTFSTATS file for analysis. Corrected data products will be made available in the archive as soon as feasible.