

V&V Reference Report

L2 ASCDS Version : 8.4.5

Observation 445 - L2 Version 4
Chandra X-Ray Center

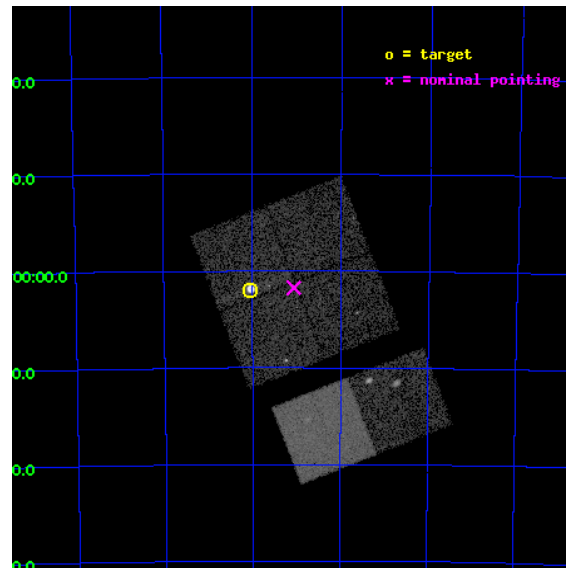
L2 Processing Date : Aug 26 2012

Contents

1	Front	2
2	OBI	3
2.1	OBI	3
2.1.1	Images	3
2.1.2	Bias	3
2.1.3	Parameters	4
2.1.4	Events	4
2.2	Compared Parameters	5
2.3	Aspect	6
2.4	Star Slots	9
2.4.1	Slot 3	9
2.4.2	Slot 4	10
2.4.3	Slot 5	11
2.4.4	Slot 6	12
2.4.5	Slot 7	13
2.5	FID Slots	14
2.5.1	Slot 0	14
2.5.2	Slot 1	15
2.5.3	Slot 2	16
A	Summary	17
A.1	Status	17
A.2	Comments	17

1 Front

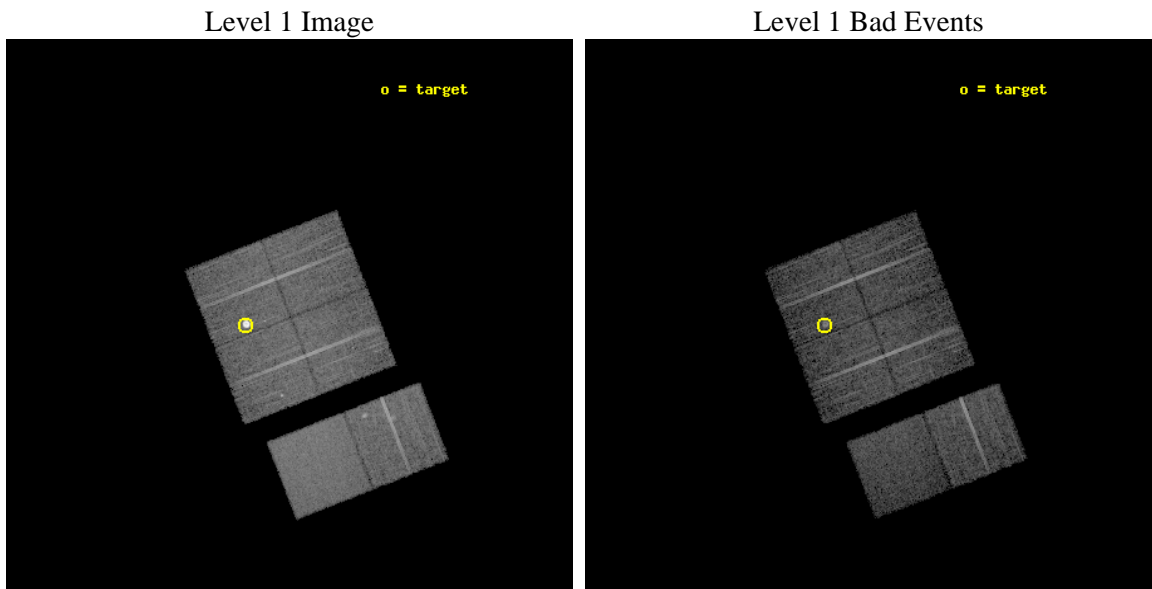
seq_num	590114	Sequence number
obs_id	445	Observation id
title	ACIS CHIP RESPONSE TO LINES WITH E=0.6-1.5 KEV	Proposal title
observer	Dr. CXC Calibration	Principal investigator
object	E0102-72.3 [Chip I1, T=120, Offsets=-4,-1,0]	Source name
dtcycle	0	
cycle	P	events from which exps? Prim/Second/Both
ra_targ	16.01	Observer's specified target RA [deg]
dec_targ	-72.032028	Observer's specified target Dec [deg]
ra_nom	15.76539794395	Nominal RA [deg]
dec_nom	-72.029100668435	Nominal Dec [deg]
roll_nom	158.71827267954	Nominal Roll [deg]
revision	4	Processing version of data
ontime	8022.4000074565	Sum of GTIs [s]
livetime	7920.8155480528	Livetime [s]
ontime0	8022.4000074565	Sum of GTIs [s]
ontime1	8022.4000074565	Sum of GTIs [s]
ontime2	8022.4000074565	Sum of GTIs [s]
ontime3	8019.1590472311	Sum of GTIs [s]
ontime6	8022.4000074565	Sum of GTIs [s]
ontime7	8022.4000074565	Sum of GTIs [s]
l2events	90217	Number of level 2 events



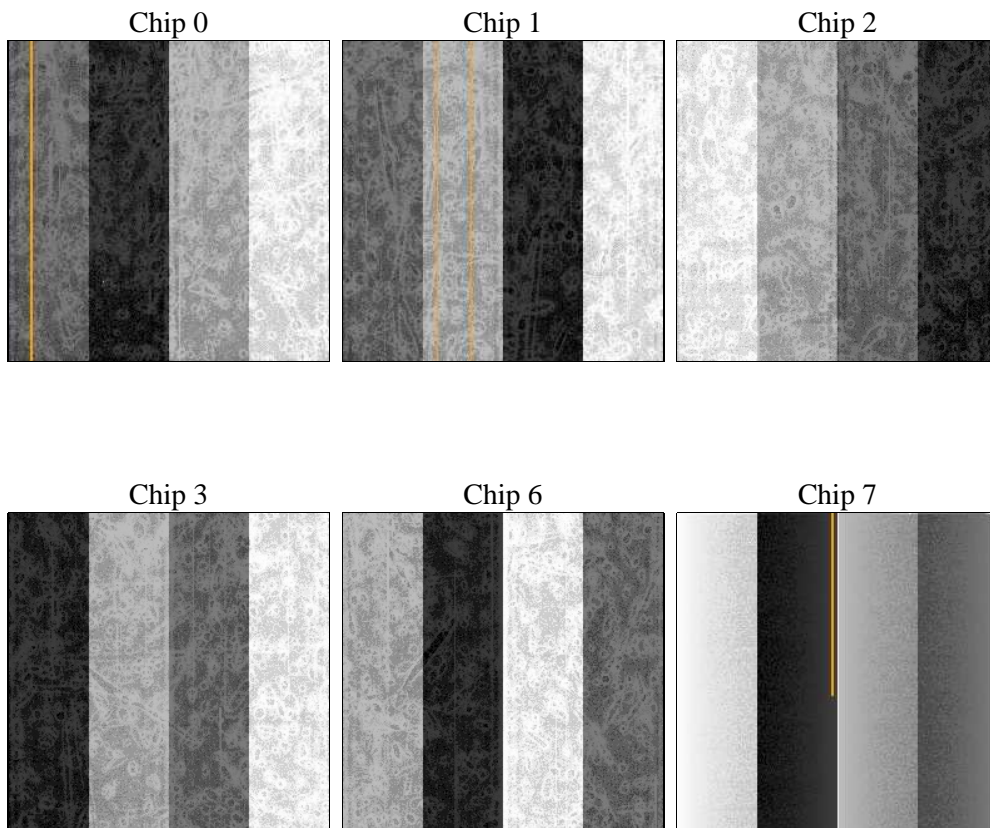
2 OBI

2.1 OBI

2.1.1 Images



2.1.2 Bias



2.1.3 Parameters

obi_num	1	Obi number	sched_exp_time	8300.000000	[s] Scheduled observation exposure time
ascdsver	8.4.5	Processing system revision	ontime	8022.4000074565	Sum of GTIs [s]
caldsver	4.5.1.1	 	ontime0	8022.4000074565	Sum of GTIs [s]
date	2012-08-26T20:26:03	Date and time of file creation	ontime1	8022.4000074565	Sum of GTIs [s]
revision	4	Processing version of data	ontime2	8022.4000074565	Sum of GTIs [s]
			ontime3	8019.1590472311	Sum of GTIs [s]
			ontime6	8022.4000074565	Sum of GTIs [s]
			ontime7	8022.4000074565	Sum of GTIs [s]
			l1events	394386	Number of level 1 events

2.1.4 Events

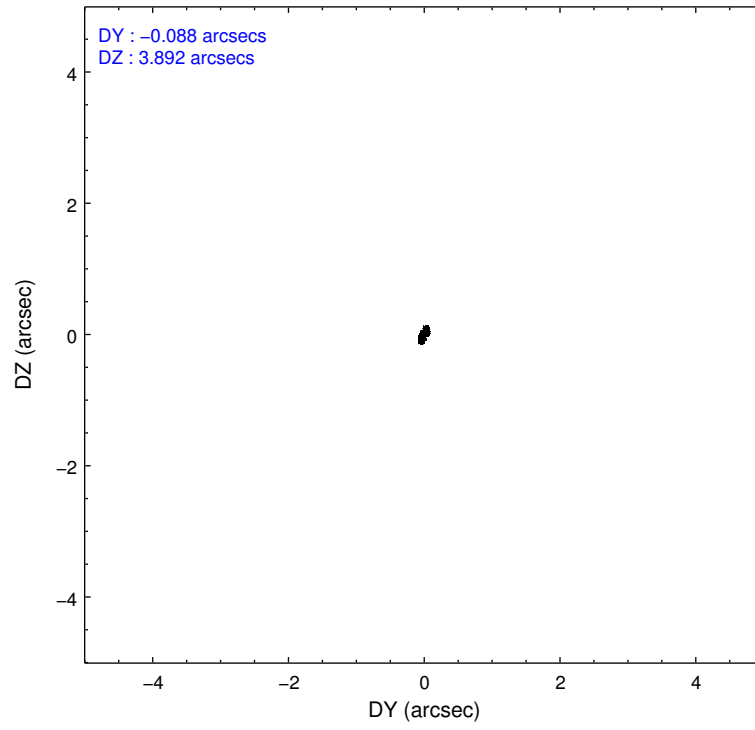
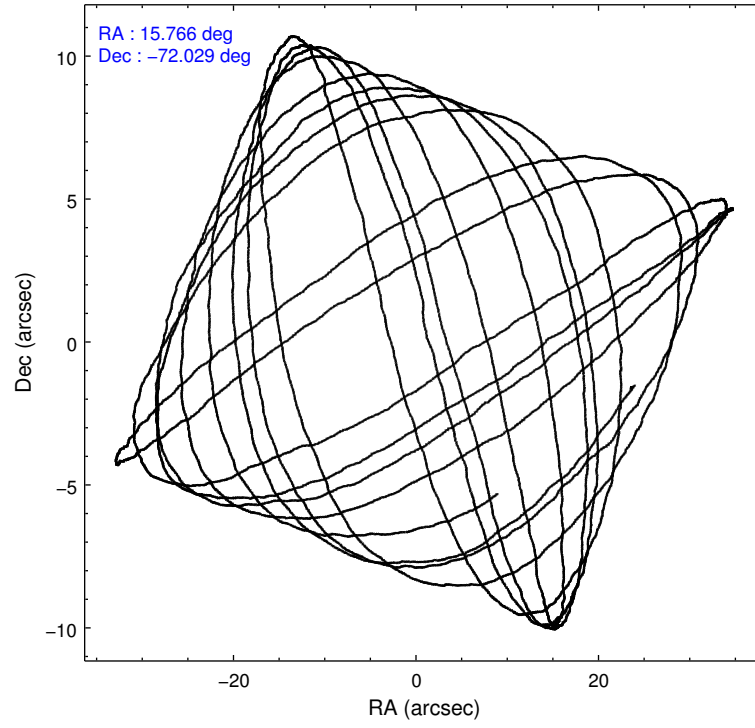
	ccd 0	ccd 1	ccd 2	ccd 3	ccd 6	ccd 7		ccd 0	ccd 1	ccd 2	ccd 3	ccd 6	ccd 7
level 1 events	54760	86570	58874	59597	62274	72311	grade 0 events	2966	30159	2855	3586	3713	3627
rejected events	48210	48888	52488	52346	54467	39991		5%	34%	4%	6%	5%	5%
rejected %	88%	56%	89%	87%	87%	55%	grade 1 events	31	330	37	30	28	67
								0%	0%	0%	0%	0%	0%
							grade 2 events	1272	3582	1214	1252	1353	6407
								2%	4%	2%	2%	2%	8%
							grade 3 events	628	1310	638	683	718	3009
								1%	1%	1%	1%	1%	4%
							grade 4 events	631	1256	636	596	742	2968
								1%	1%	1%	1%	1%	4%
							grade 5 events	1816	2171	1744	1918	2120	6578
								3%	2%	2%	3%	3%	9%
							grade 6 events	1059	1401	1050	1141	1294	16338
								1%	1%	1%	1%	2%	22%
							grade 7 events	46357	46361	50700	50391	52306	33317
								84%	53%	86%	84%	83%	46%

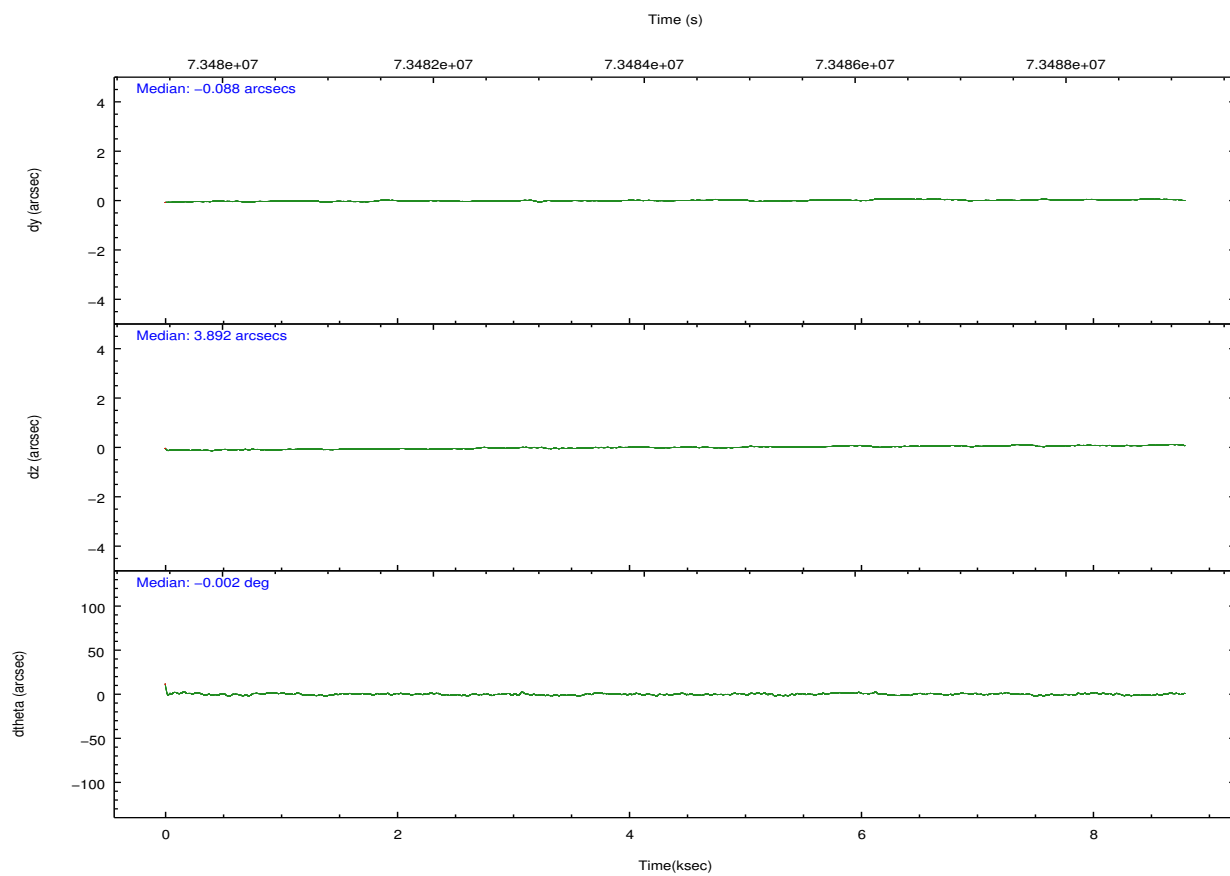
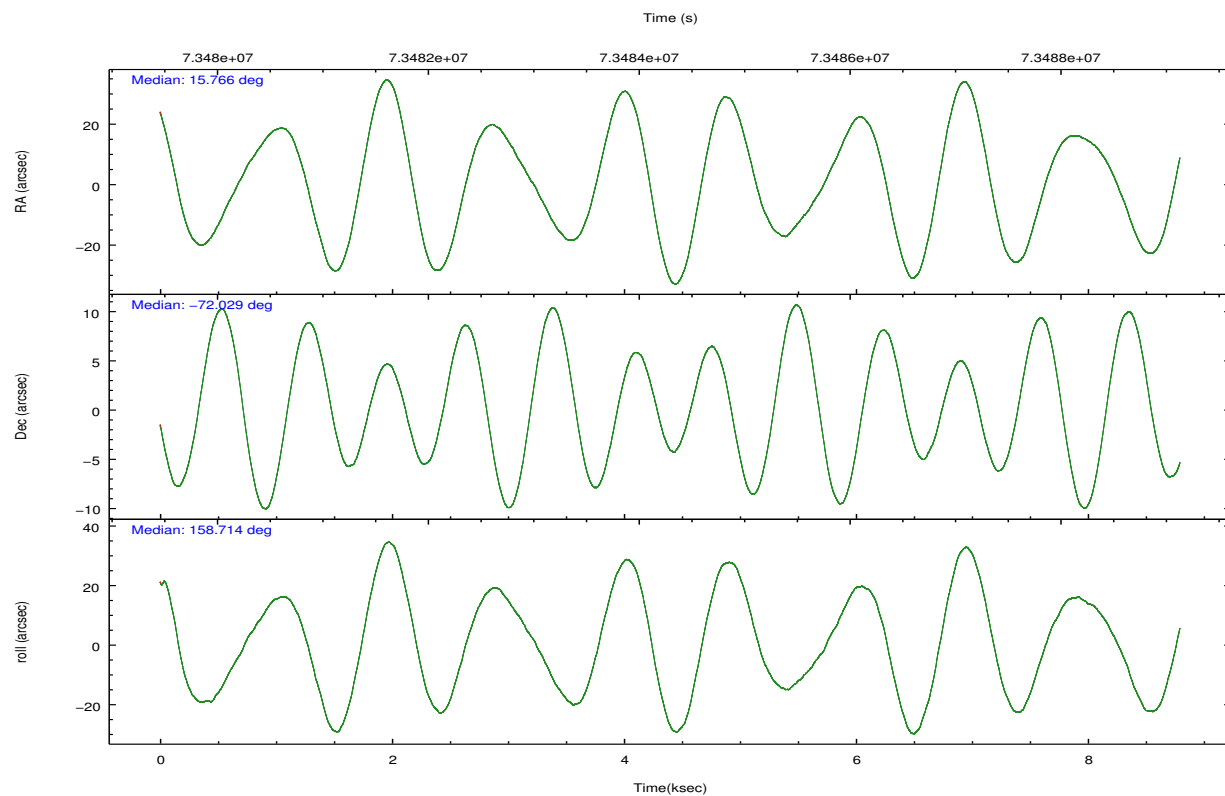
2.2 Compared Parameters

Parameter	Planned	Actual
Instrument	ACIS	ACIS
Detector	ACIS-012367	ACIS-012367
Grating	NONE	NONE
Data mode	FAINT	FAINT
Observation mode	POINTING	POINTING
[deg] Pointing RA	15.854112	15.76539794394978
[deg] Pointing Dec	-72.025064	-72.02910066843542
[deg] Pointing Roll	158.593976	158.7182726795405
[mm] SIM focus pos	-0.782348	-0.7809083437167272
[mm] SIM defocus	0	0.001439871863259334
[mm] SIM translation stage pos	-233.592463	-233.5874344608287
[mm] SIM translation stage offset	0	-0.005018542100998502
[s] Observation start time (MET)	73480384.184000	73479718.681632
Observation start date	2000-04-30T11:12:00	2000-04-30T11:01:58
[s] Observation end time (MET)	73488684.184000	73488824.269466
Observation end date	2000-04-30T13:30:20	2000-04-30T13:33:44
Read mode	TIMED	TIMED

Parameter	Planned	Actual
Obspar format version number	7	7
Obspar file type	PREDICTED	ACTUAL
Obspar update status	NONE	UPDATED
Number of optional ACIS chips dropped	0	0
On-chip summing requested	N	N
Subarray requested	NONE	NONE
Alternating exposures requested	N	N
[s] Primary exposure time	0.000000	3.2

2.3 Aspect



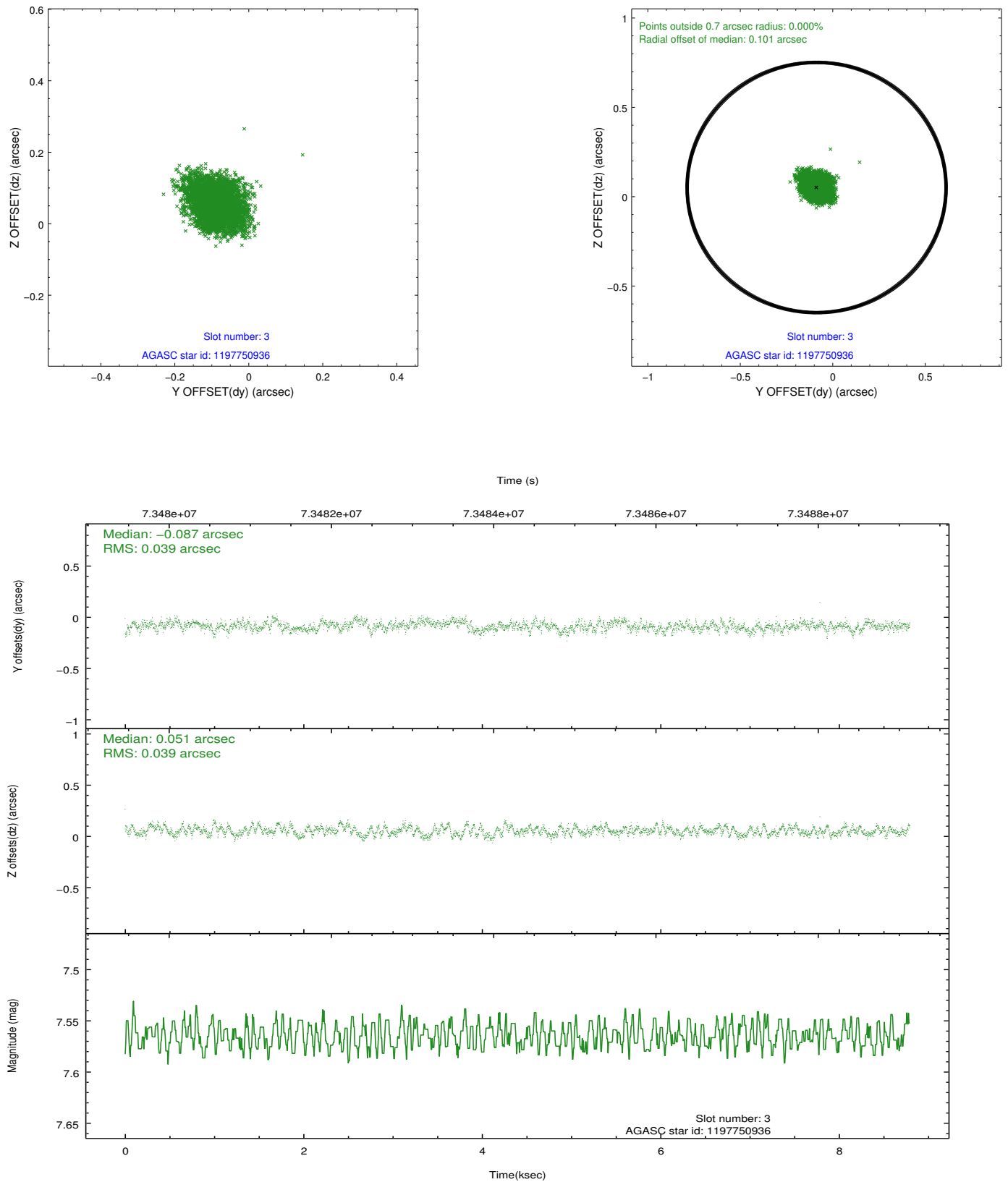


Slot Statistics

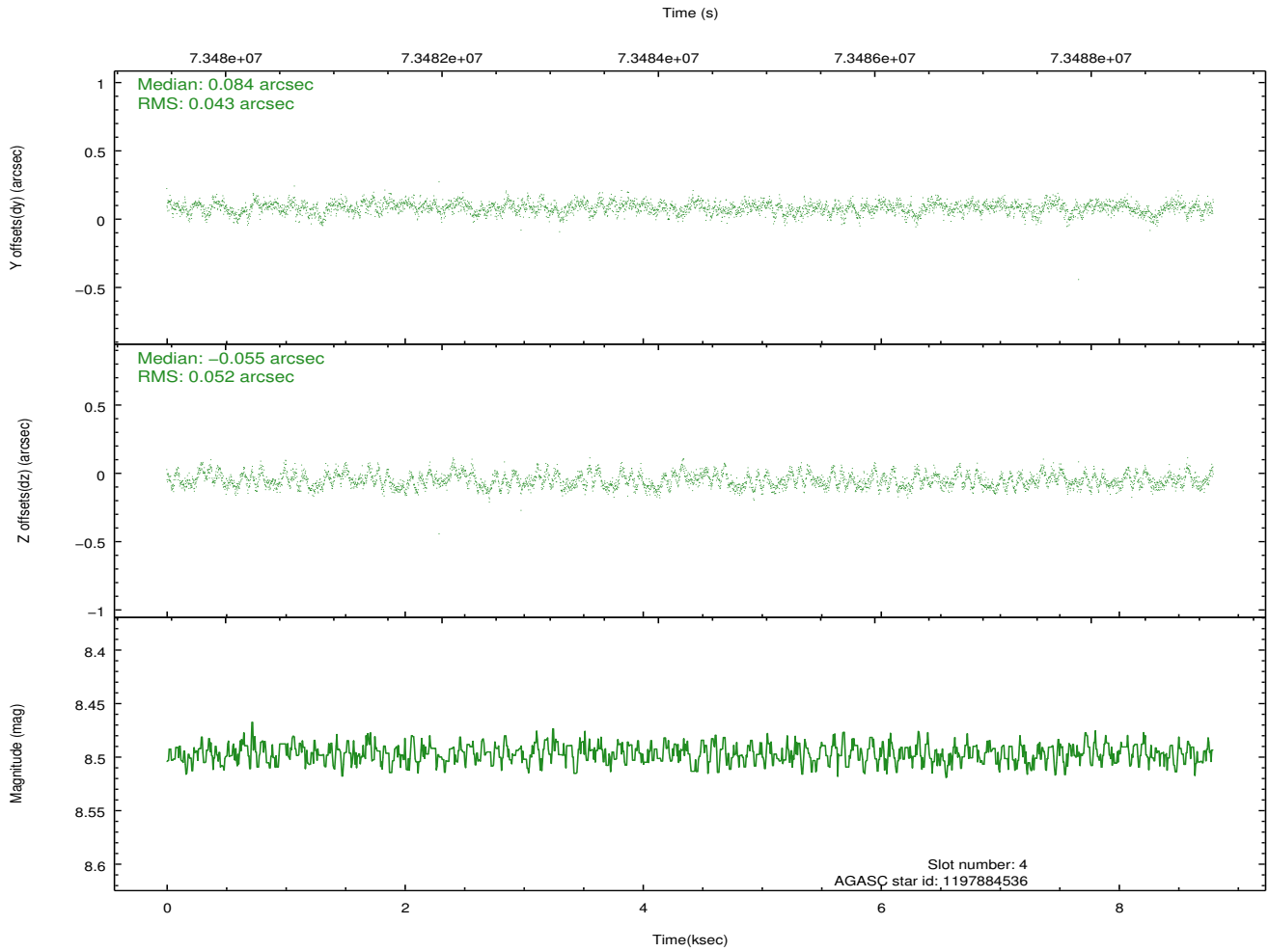
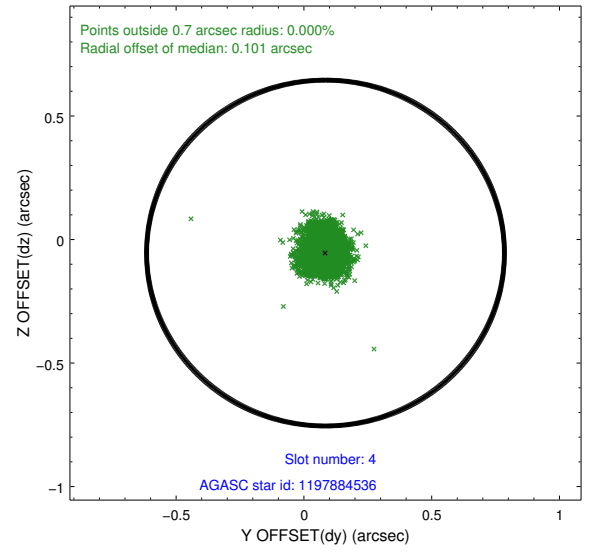
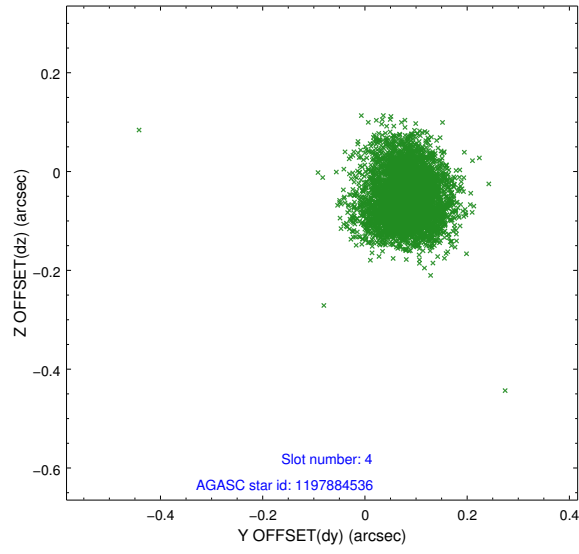
slot	status	id	mag	n_pts	med_dy	med_dz	dr1	dr2	ra	dec	mean_y	mean_z
0	FID	ACIS-I-2	7.15	2145	-0.053	-0.044	0.010	0.018	0.000000	0.000000	-754.26	-833.61
1	FID	ACIS-I-4	7.17	2145	0.026	0.048	0.008	0.015	0.000000	0.000000	2159.59	1072.35
2	FID	ACIS-I-5	7.23	2145	-0.073	0.064	0.010	0.017	0.000000	0.000000	-1807.30	1070.92
3	GUIDE	1197750936	7.56	4287	-0.087	0.051	0.058	0.095	15.387940	-71.549550	1118.67	-1398.40
4	GUIDE	1197884536	8.50	4286	0.084	-0.055	0.072	0.115	17.160729	-71.835289	-1121.07	-1157.44
5	GUIDE	1197884712	8.30	4289	-0.008	-0.065	0.058	0.099	16.087398	-72.252690	-537.81	669.04
6	GUIDE	1197750544	10.73	4282	-0.151	-0.049	0.179	0.283	13.428125	-72.143881	2316.50	1425.38
7	GUIDE	1197885104	9.36	4286	0.165	0.114	0.087	0.142	17.845067	-72.189368	-2268.99	-215.82

2.4 Star Slots

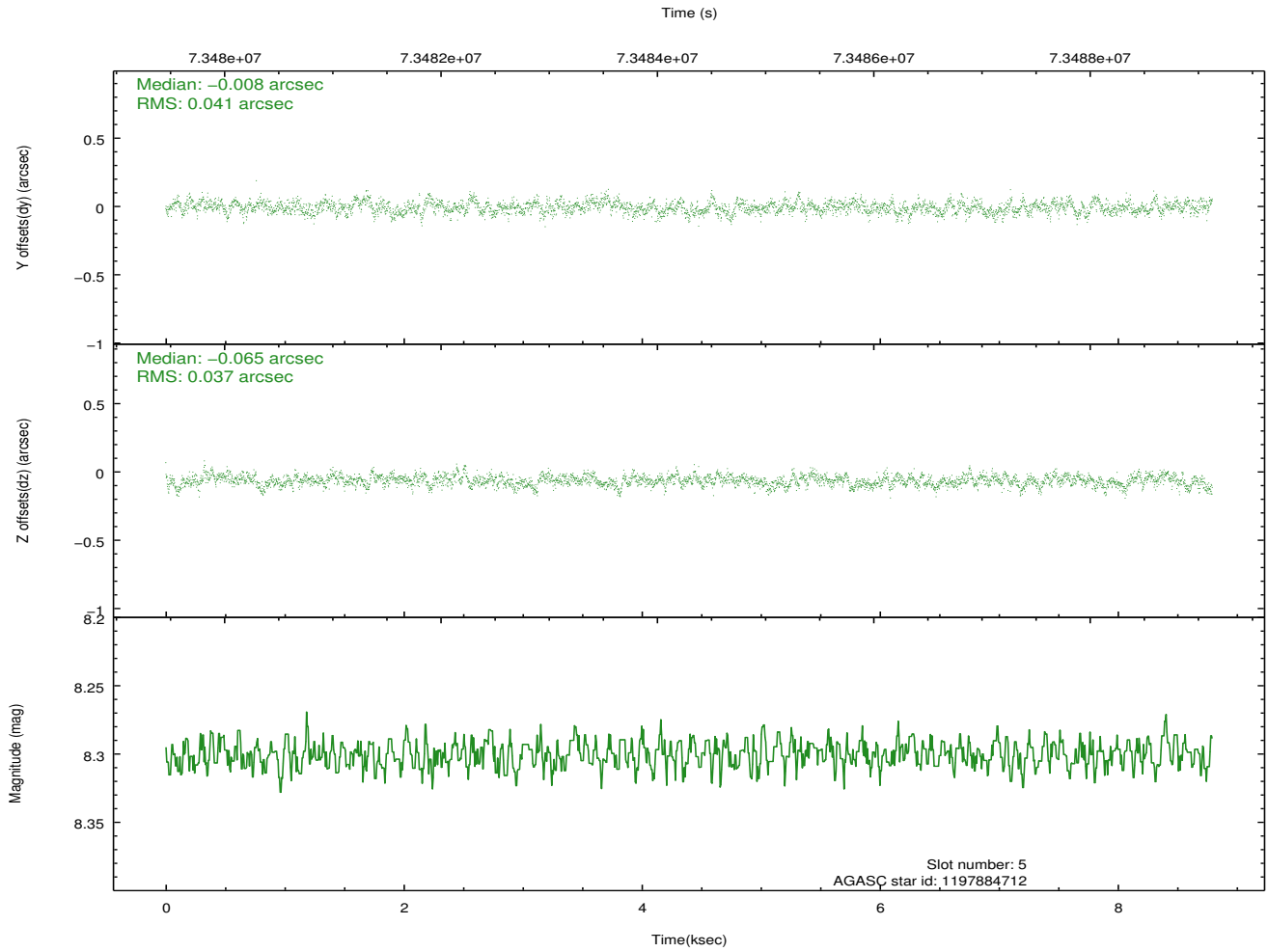
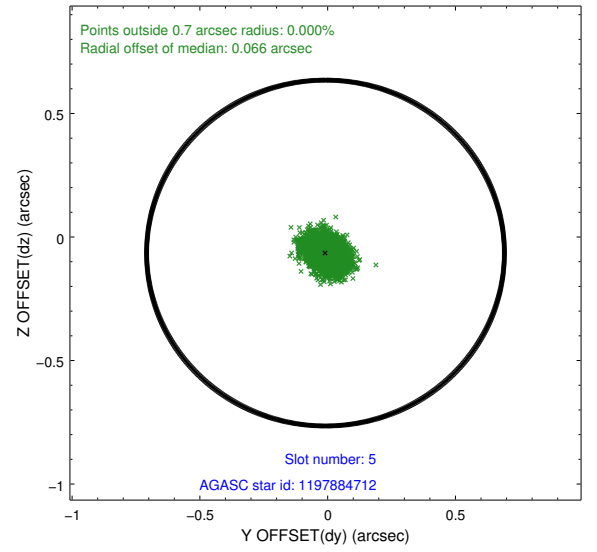
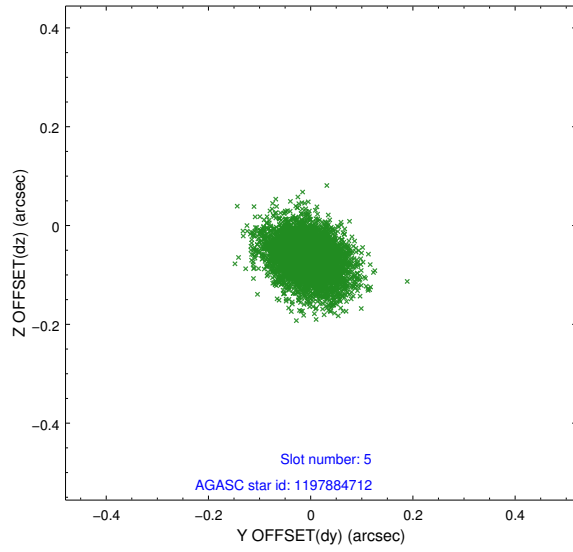
2.4.1 Slot 3



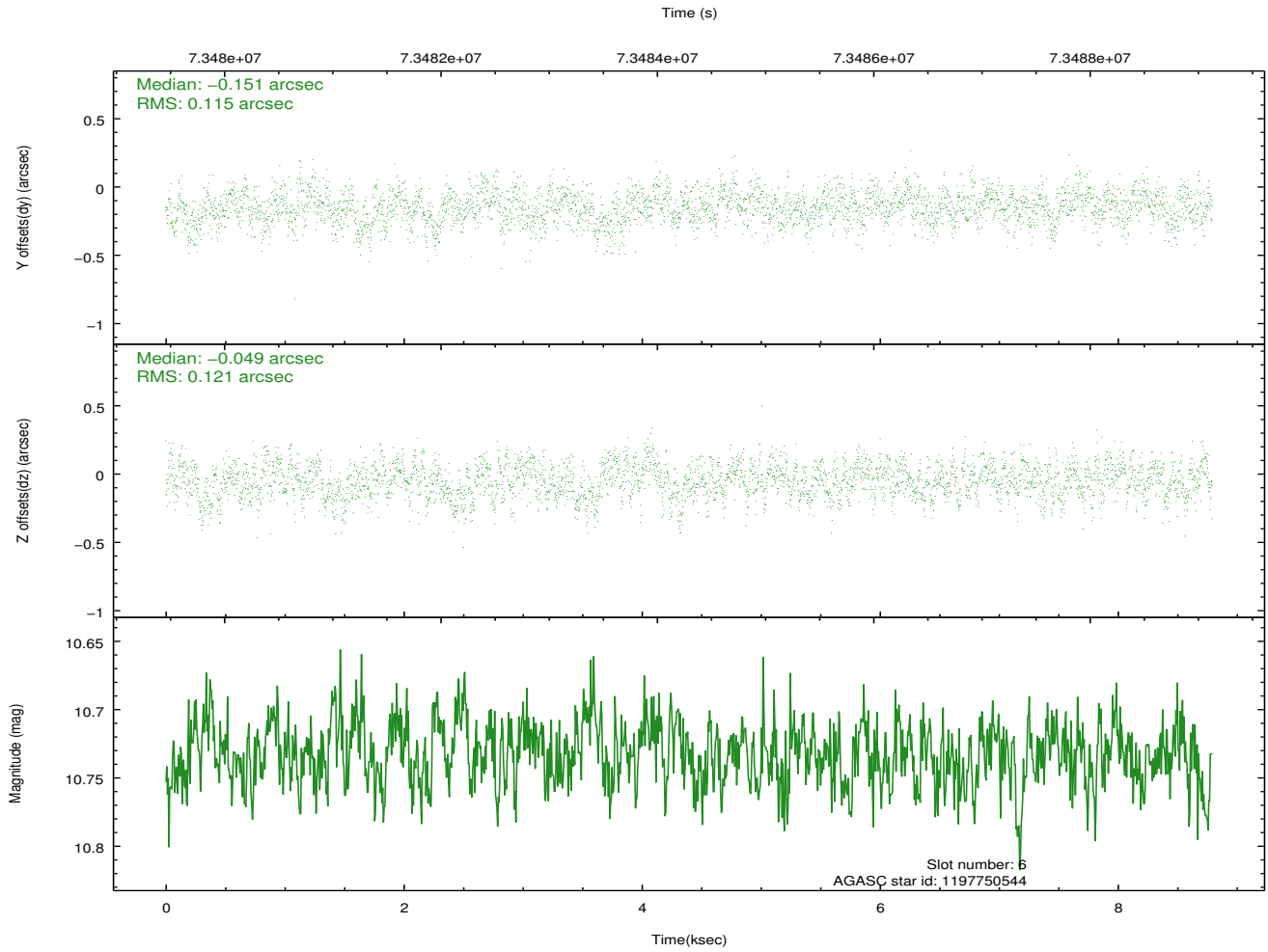
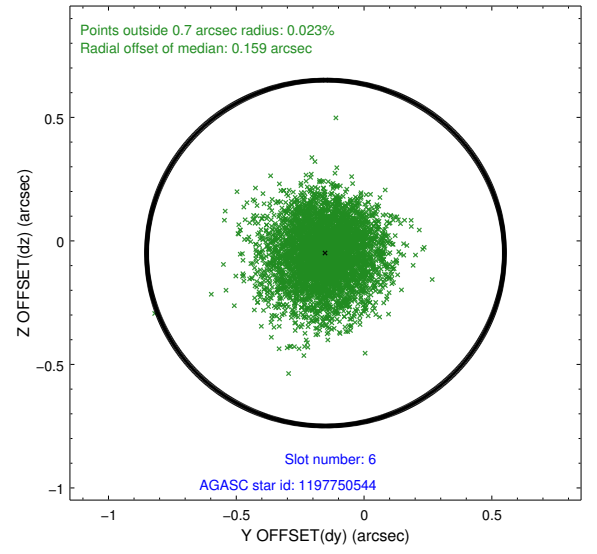
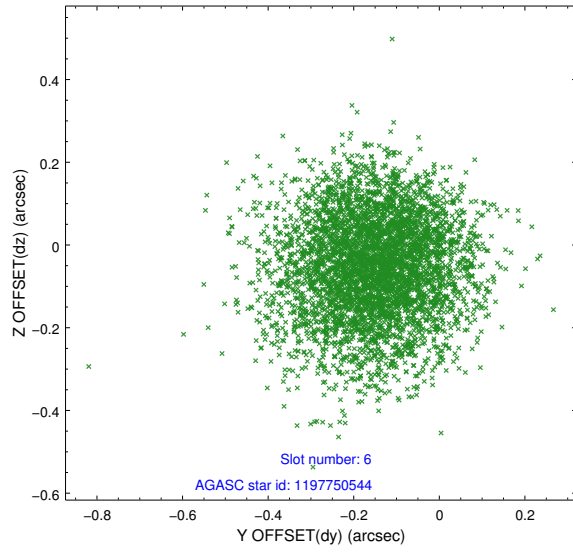
2.4.2 Slot 4



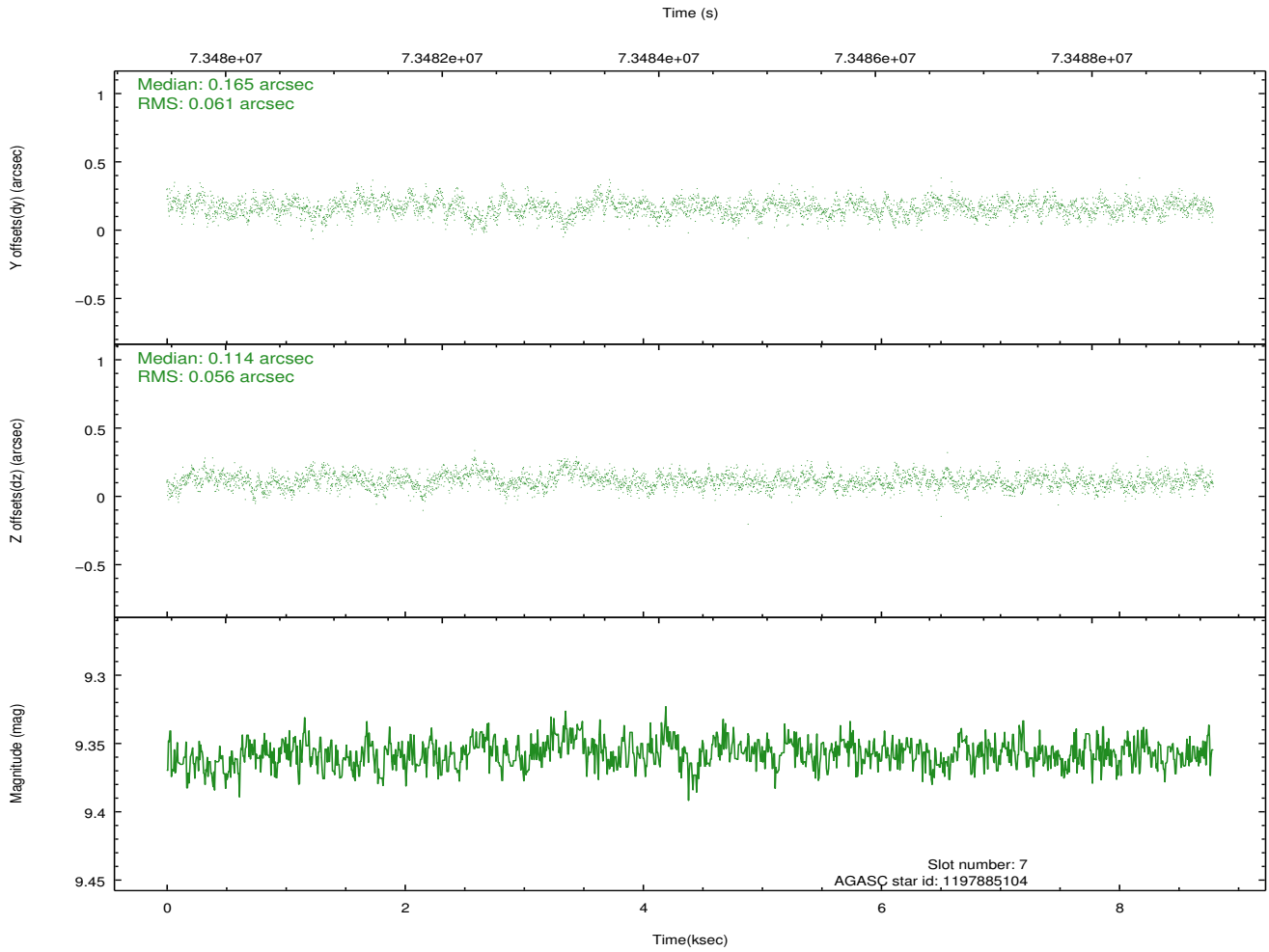
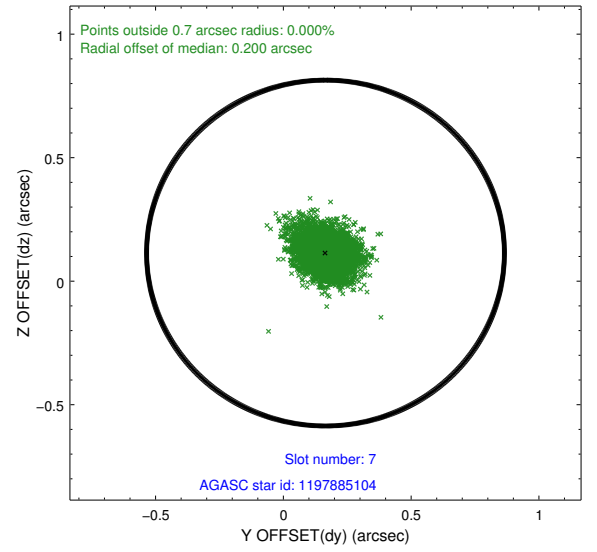
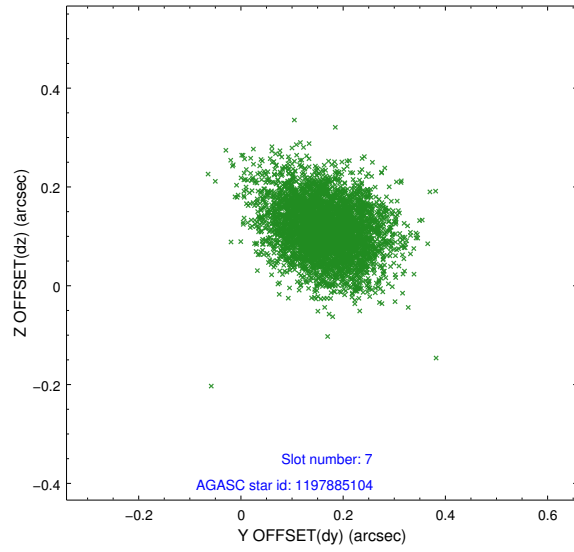
2.4.3 Slot 5



2.4.4 Slot 6

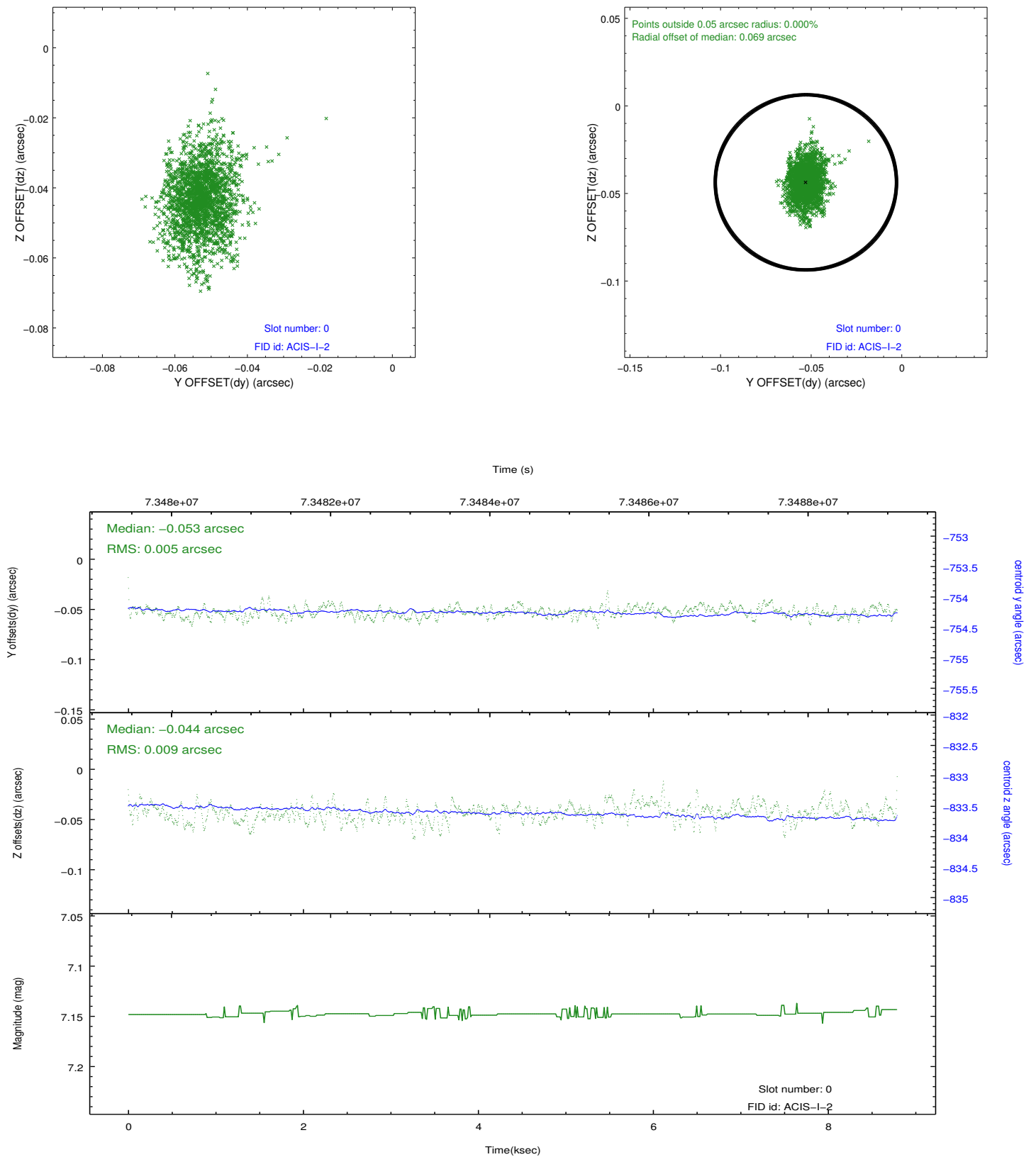


2.4.5 Slot 7

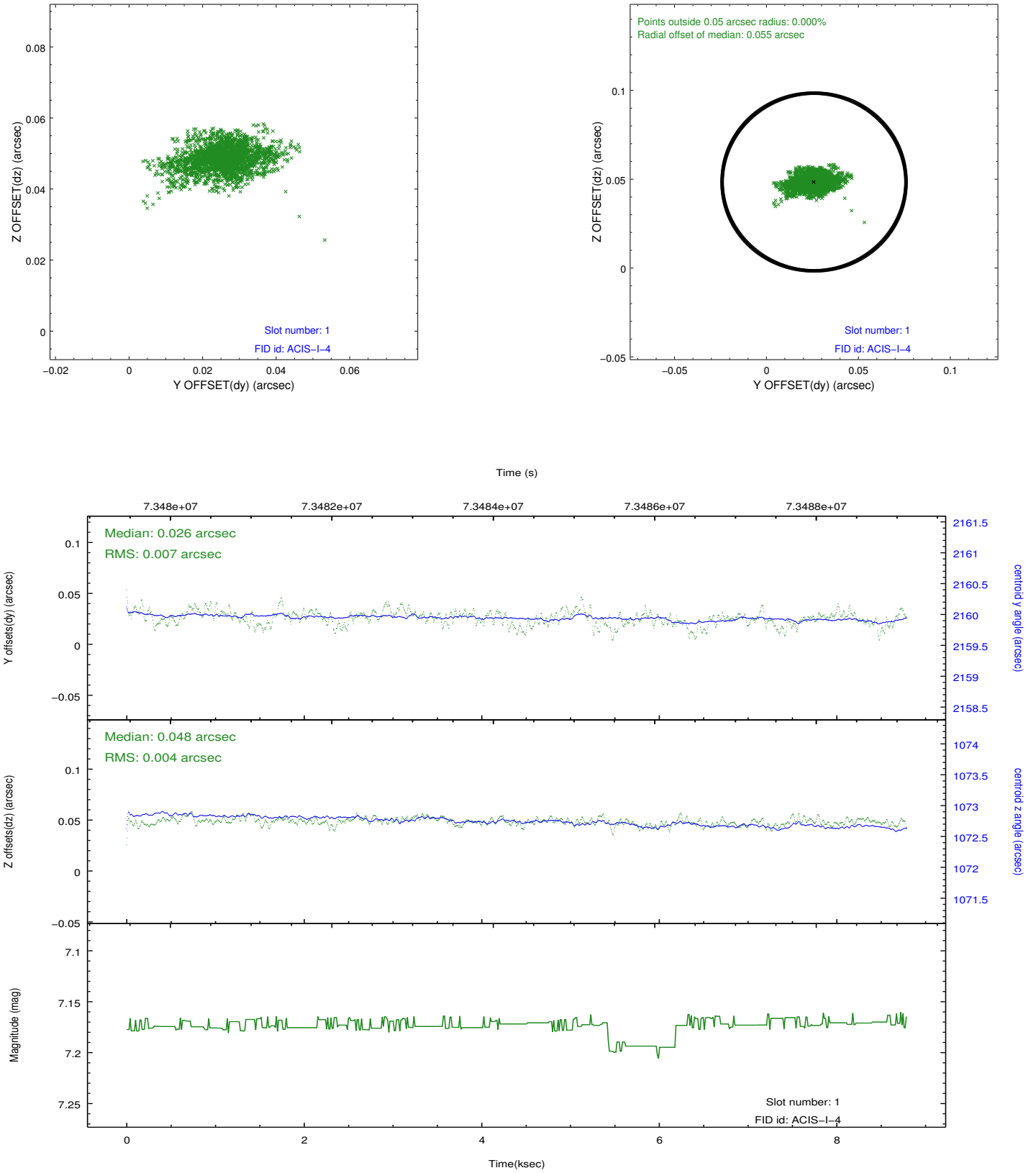


2.5 FID Slots

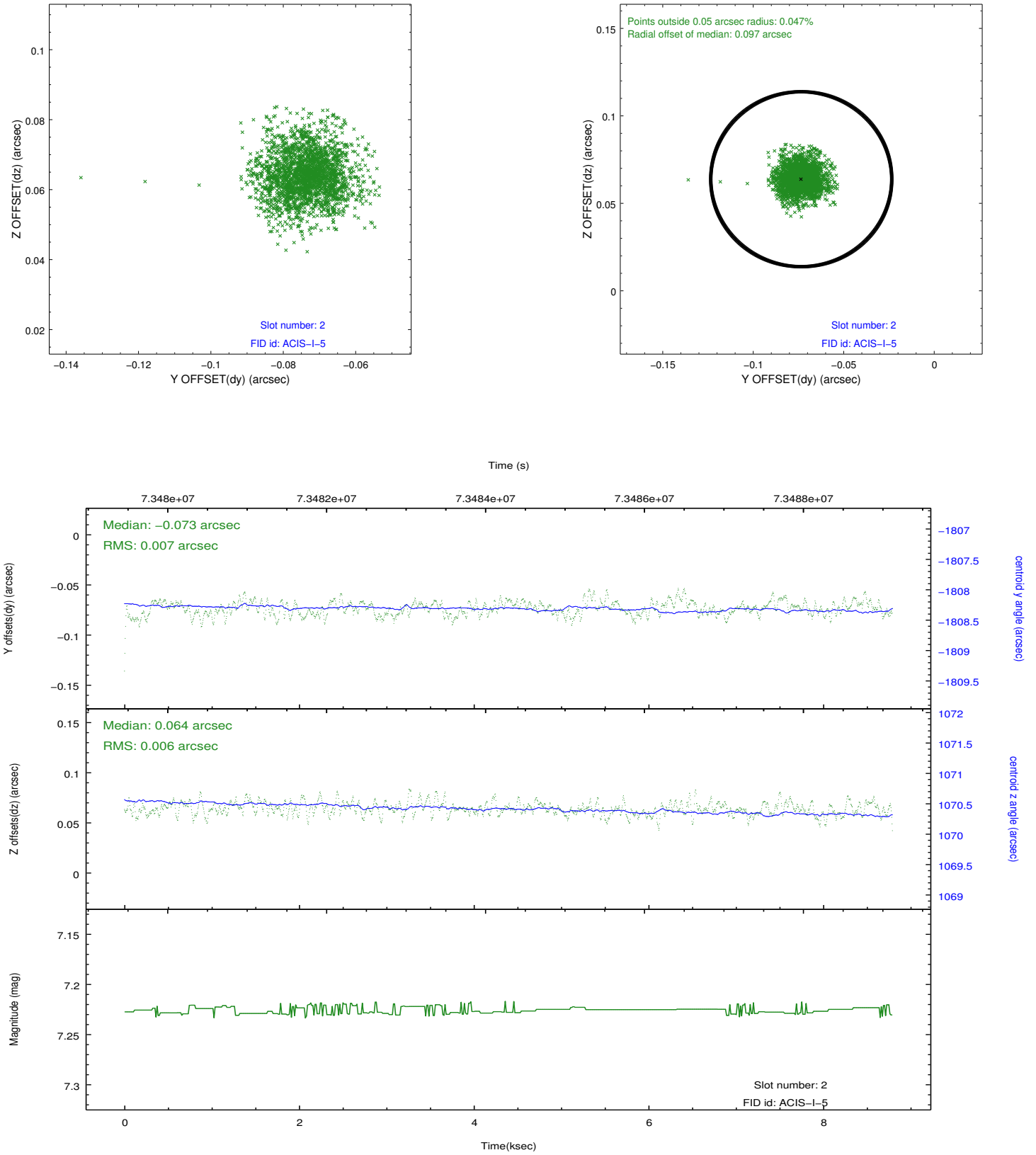
2.5.1 Slot 0



2.5.2 Slot 1



2.5.3 Slot 2



A Summary

A.1 Status

V&V Scientist	Jen Lauer
V&V Date (YYYY-MM-DD)	2012.08.29
V&V Edition	1
V&V Disposition and Status	OK
V&V Charge Time	8.025

A.2 Comments