

V&V Reference Report

L2 ASCDS Version : 7.6.8

Observation 4415 - L2 Version 001
Chandra X-Ray Center

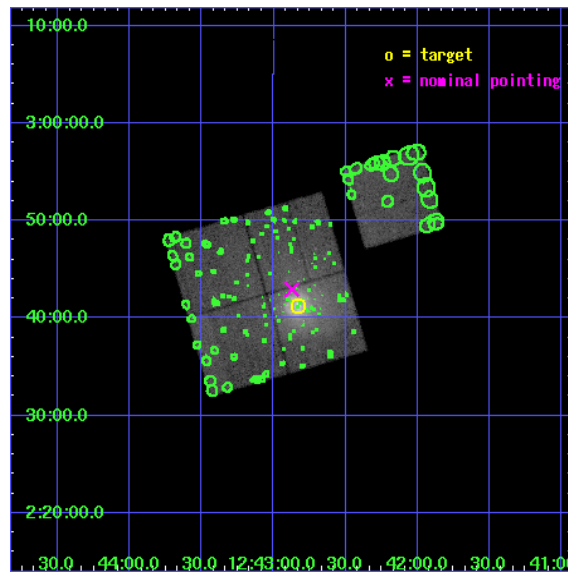
L2 Processing Date : Jul 27 2006

Contents

1	Front	2
2	OBI	3
2.1	OBI	3
2.1.1	Images	3
2.1.2	Bias	3
2.1.3	Parameters	4
2.1.4	Events	4
2.2	Compared Parameters	5
2.3	Aspect	6
2.4	Star Slots	9
2.4.1	Slot 3	9
2.4.2	Slot 4	10
2.4.3	Slot 5	11
2.4.4	Slot 6	12
2.4.5	Slot 7	13
2.5	FID Slots	14
2.5.1	Slot 0	14
2.5.2	Slot 1	15
2.5.3	Slot 2	16
3	Point Sources	17
A	Summary	18
A.1	Status	18
A.2	Comments	18

1 Front

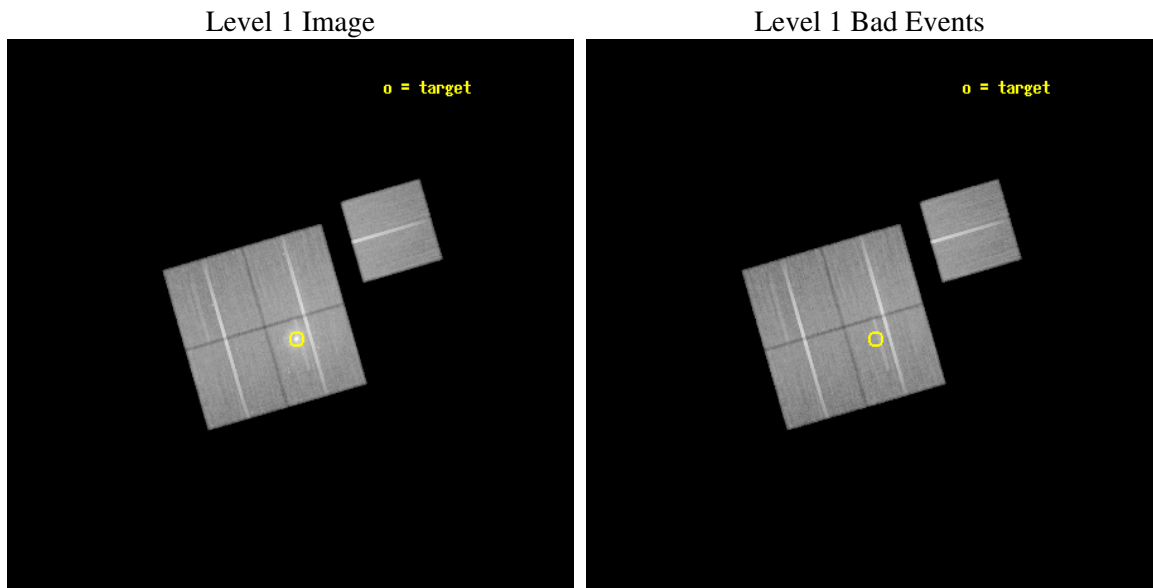
seq_num	600331
obs_id	4415
title	EXPLORING THE COOLING FLOW RIDDLE: THE NATURE AND EFFECT OF NUCLEAR OUTBURSTS IN THE ELLIPTICAL GALAXY NGC4636
observer	Dr. Christine Jones
object	NGC4636
dtcycle	0
cycle	P
ra_targ	190.708333
dec_targ	2.688056
ra_nom	190.71831090143
dec_nom	2.7156224550049
roll_nom	73.834219434443
revision	3
ontime	75348.51785481
livetime	74364.033998265
ontime0	75339.094934046
ontime1	75339.094884217
ontime2	75335.953953803
ontime3	75348.51785481
ontime6	75345.376894504
l2events	306127



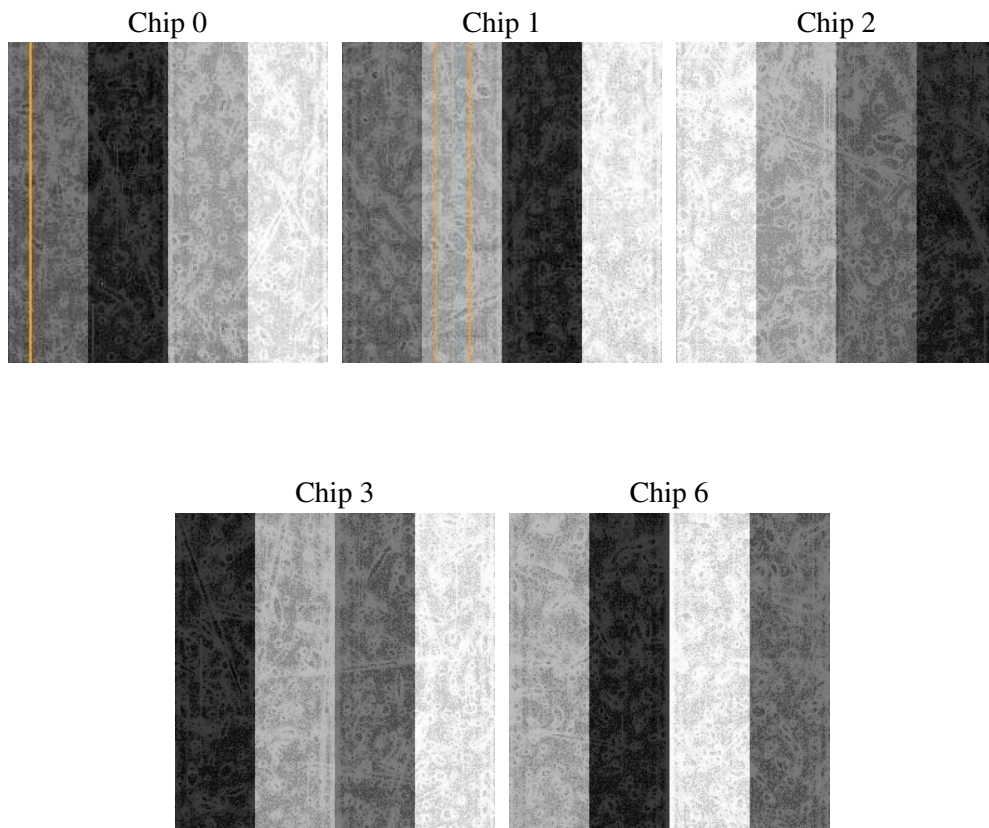
2 OBI

2.1 OBI

2.1.1 Images



2.1.2 Bias



2.1.3 Parameters

obi_num	0
ascdsver	7.6.8
caldbver	3.2.2
date	2006-07-27T18:06:18
revision	3

sched_exp_time	75583.000000
ontime	75352.823075175
ontime0	75343.400154412
ontime1	75343.400104582
ontime2	75340.259174168
ontime3	75352.823075175
ontime6	75349.682114869
l1events	2171276

2.1.4 Events

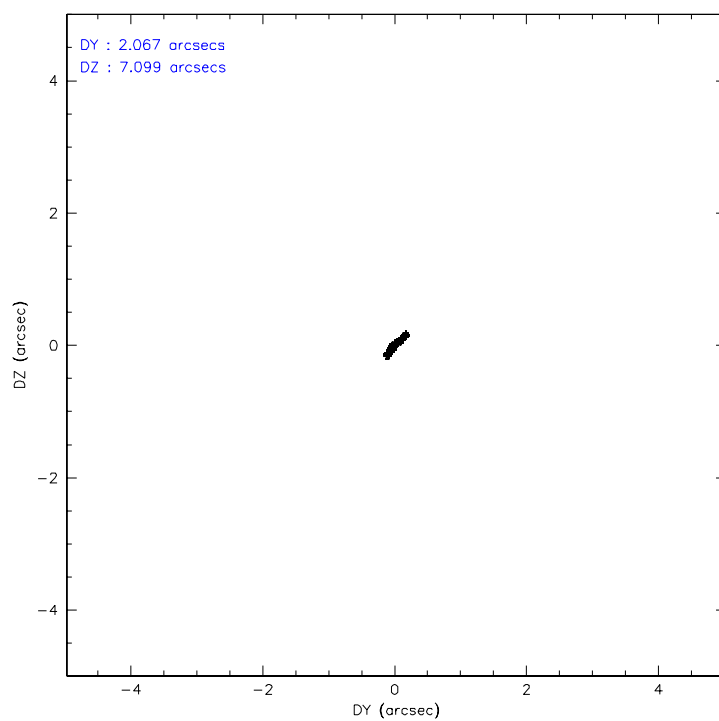
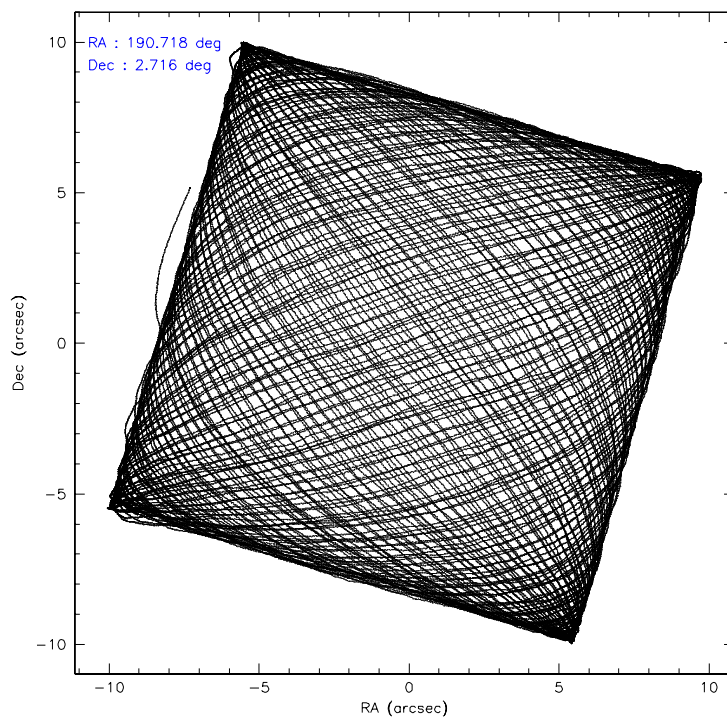
	ccd 0	ccd 1	ccd 2	ccd 3	ccd 6
level 1 events	390163	390495	452200	516590	421828
rejected events	340777	336519	393902	380919	373750
rejected %	87%	86%	87%	73%	88%

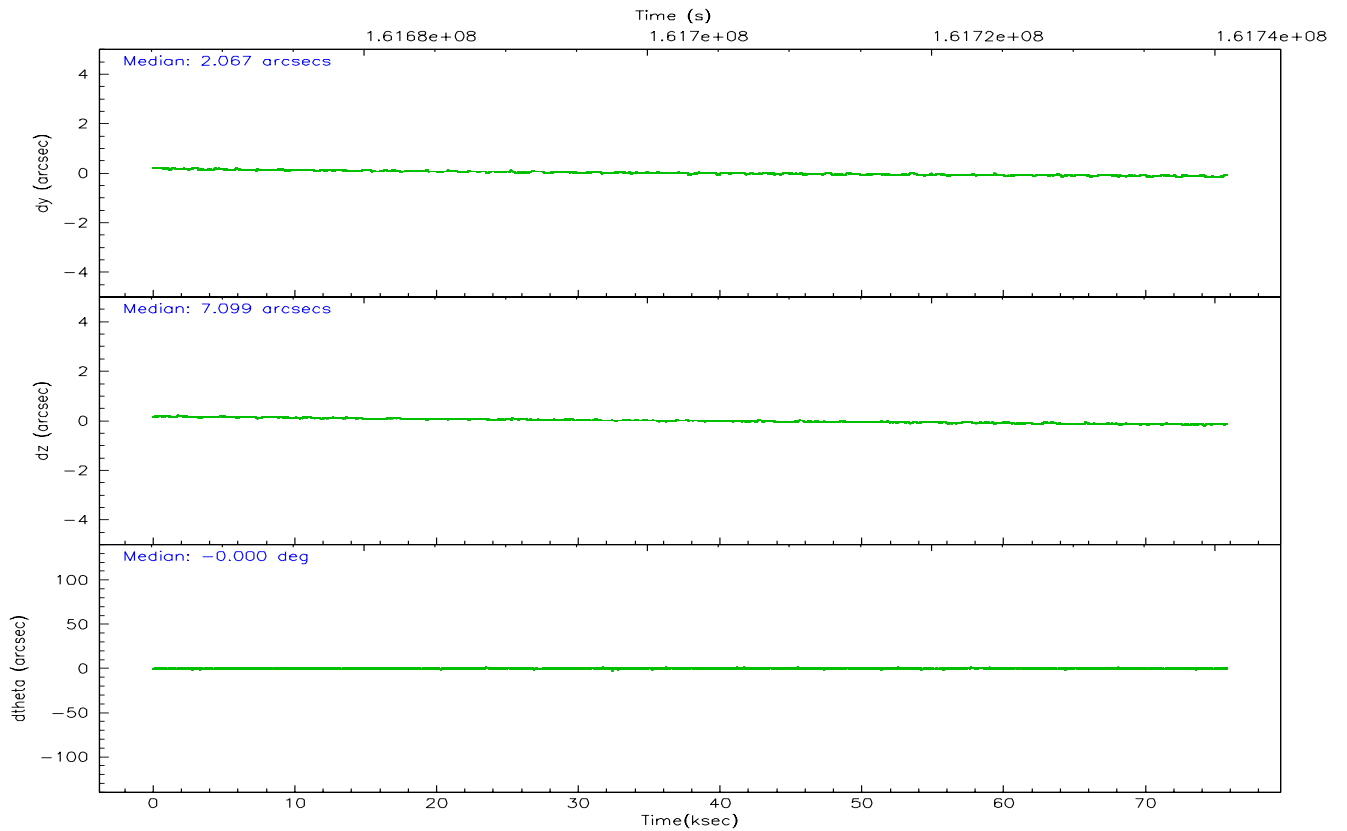
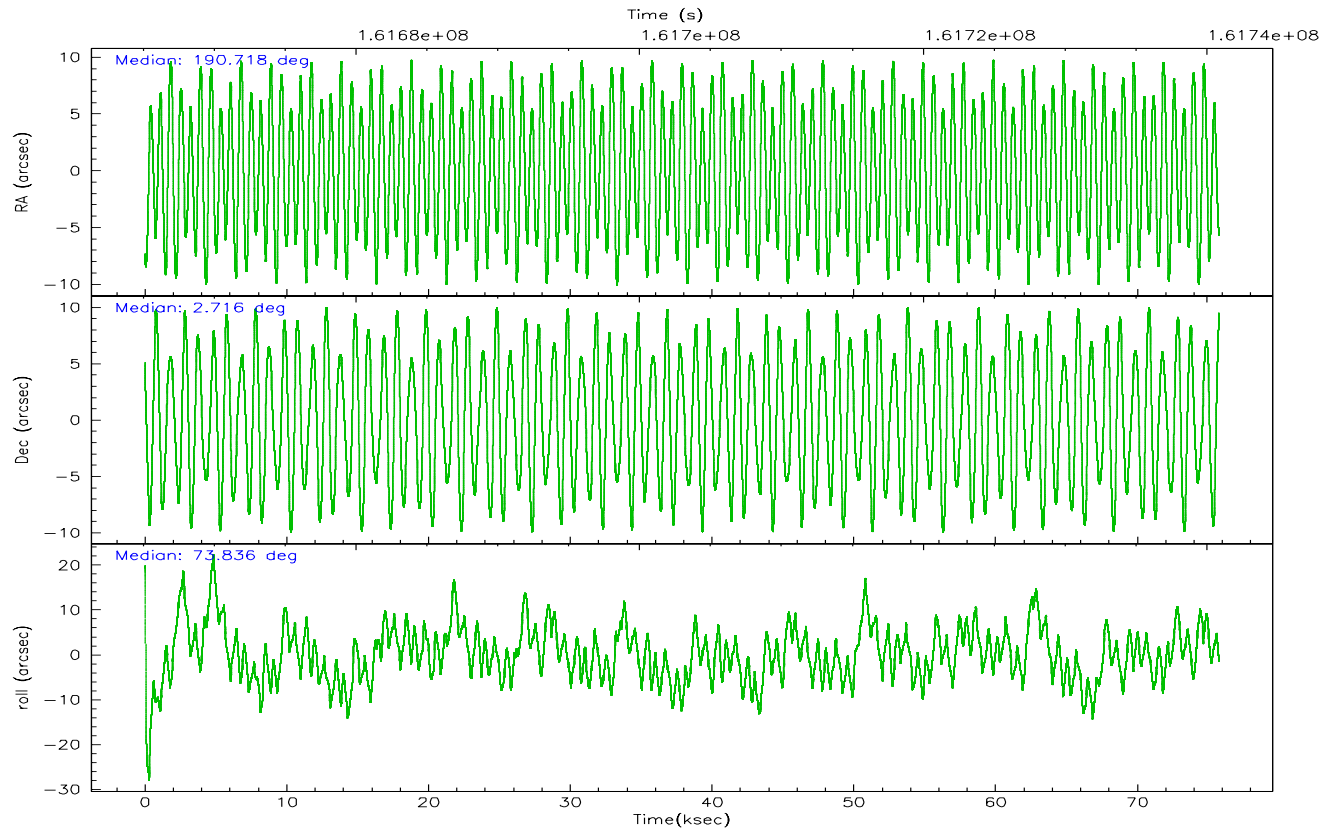
	ccd 0	ccd 1	ccd 2	ccd 3	ccd 6
grade 0 events	22247	24552	31244	101127	20810
	5%	6%	6%	19%	4%
grade 1 events	225	231	299	545	168
	0%	0%	0%	0%	0%
grade 2 events	9749	10086	10225	14508	8949
	2%	2%	2%	2%	2%
grade 3 events	5048	5256	4787	6004	4781
	1%	1%	1%	1%	1%
grade 4 events	4606	5191	4792	5944	4806
	1%	1%	1%	1%	1%
grade 5 events	14066	14622	13325	15776	15383
	3%	3%	2%	3%	3%
grade 6 events	7740	8895	7252	8092	8733
	1%	2%	1%	1%	2%
grade 7 events	326482	321662	380276	364594	358198
	83%	82%	84%	70%	84%

2.2 Compared Parameters

Parameter	Planned	Actual	Parameter	Planned	Actual
Instrument	ACIS	ACIS	Obspar format version number	6	6
Detector	ACIS-01236	ACIS-01236	Obspar file type	PREDICTED	ACTUAL
Grating	NONE	NONE	Obspar update status	NONE	UPDATED
Data mode	VFAINT	VFAINT	On-chip summing requested	N	N
Observation mode	POINTING	POINTING	Subarray requested	NONE	NONE
Pointing RA	190.724979	190.7183109014332	Alternating exposures requested	N	N
Pointing Dec	2.689075	2.715622455004856	Primary exposure time	0.000000	3.1
Pointing Roll	73.625220	73.83421943444321			
SIM focus pos (mm)	-0.782348	-0.7809083437167272			
SIM defocus (mm)	0	0.001439871863259334			
SIM translation stage pos (mm)	-227.304463	-227.3117034681349			
SIM translation stage offset (mm)	-6.288	-6.280749534794751			
Observation start time	161665291.184000	161664915.54313			
Observation start date	2003-02-15T03:00:27	2003-02-15T02:55:15			
Observation end time	161740874.184000	161741727.50886			
Observation end date	2003-02-16T00:00:10	2003-02-16T00:15:27			
Read mode	TIMED	TIMED			

2.3 Aspect



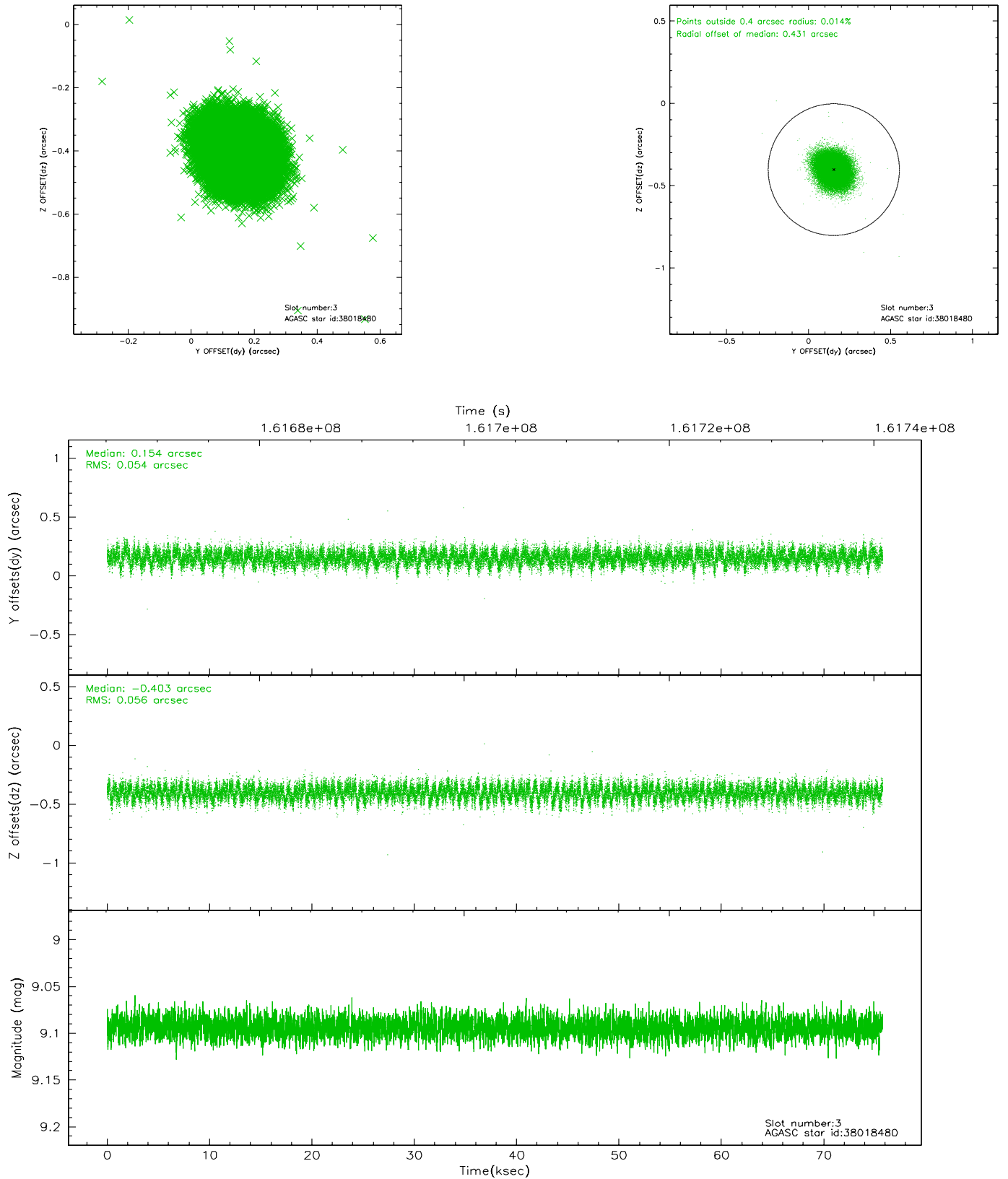


Slot Statistics

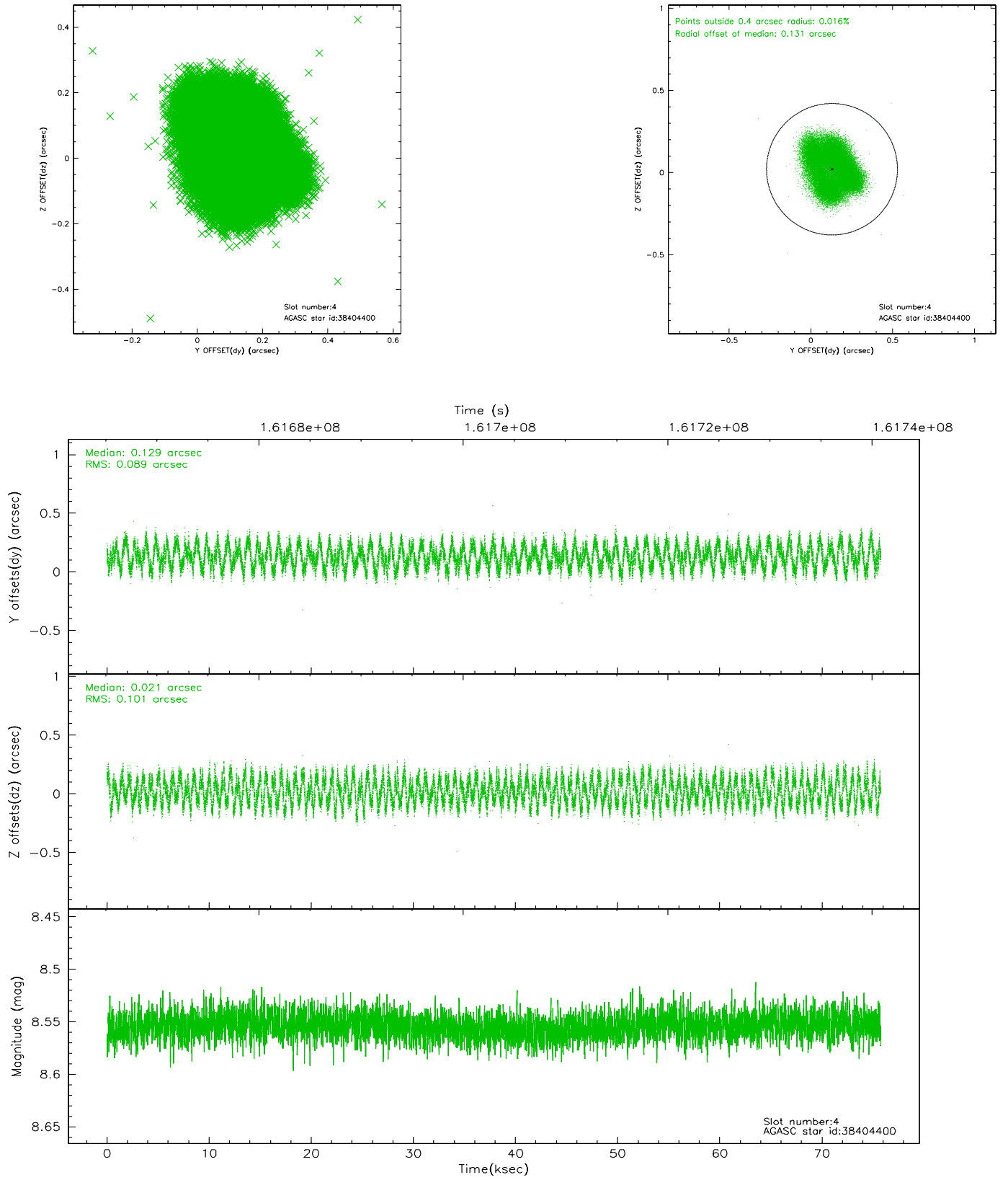
slot	status	id	mag	n_pts	med_dy	med_dz	dr1	dr2	ra	dec	mean_y	mean_z
0	FID	ACIS-I-1	7.24	18480	0.068	-0.069	0.007	0.011	0.000000	0.000000	937.67	-959.51
1	FID	ACIS-I-5	7.24	18480	-0.126	0.088	0.006	0.010	0.000000	0.000000	-1810.62	938.23
2	FID	ACIS-I-6	7.25	18477	-0.034	0.052	0.008	0.013	0.000000	0.000000	403.24	1582.58
3	GUIDE	38018480	9.09	36951	0.154	-0.403	0.083	0.133	190.261944	2.299844	-1813.21	1202.98
4	GUIDE	38404400	8.55	36952	0.129	0.021	0.149	0.208	190.883800	2.621151	-73.16	-616.59
5	GUIDE	38405600	10.10	36907	0.104	0.224	0.166	0.274	190.858712	2.900685	866.68	-246.09
6	GUIDE	38407800	10.36	36920	0.042	0.379	0.134	0.220	191.026784	2.963213	1253.22	-762.26
7	BAD	38409760	10.19	33657	-0.476	-0.243	0.171	0.301	191.438451	3.119159	2209.39	-2023.61

2.4 Star Slots

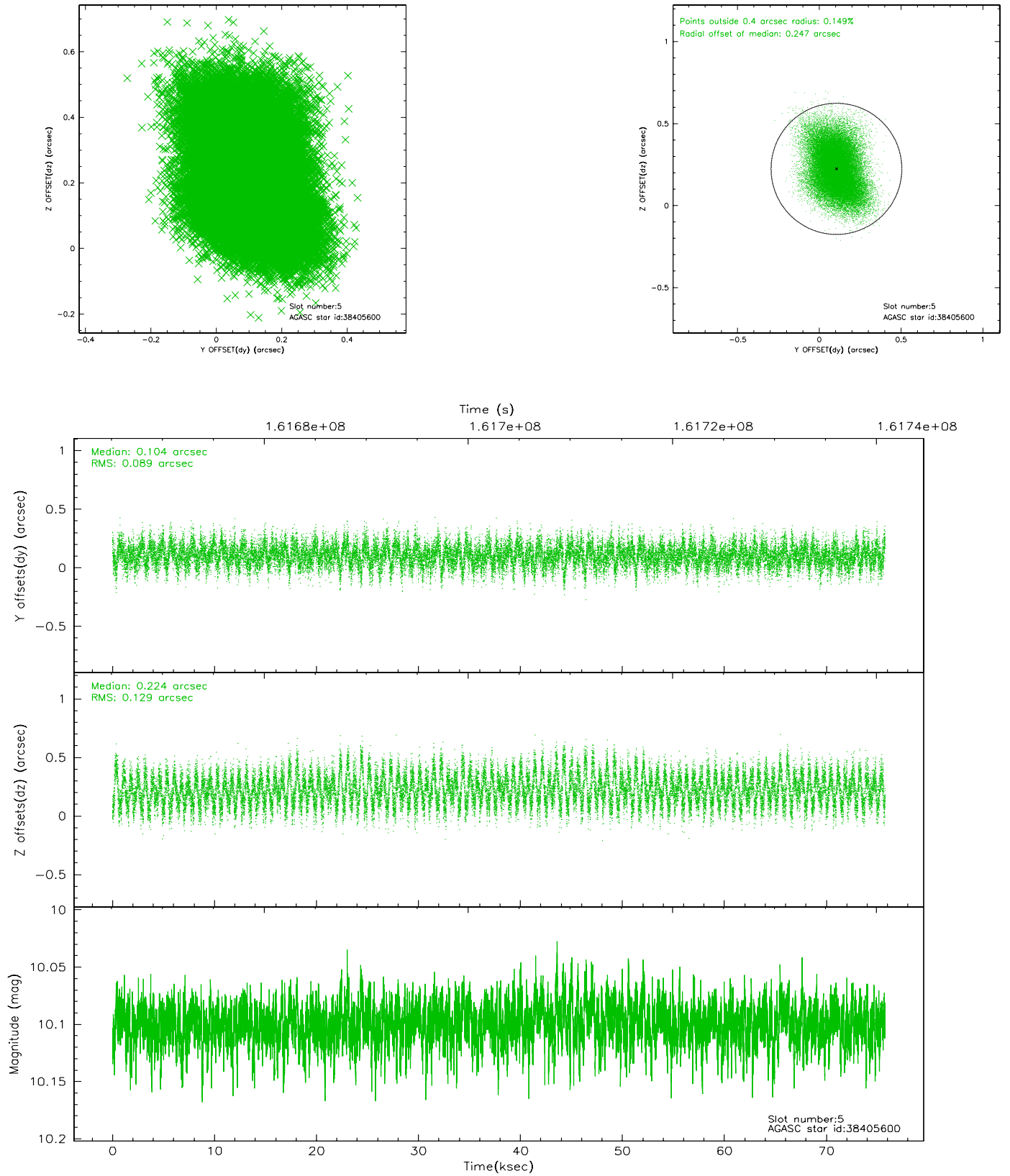
2.4.1 Slot 3



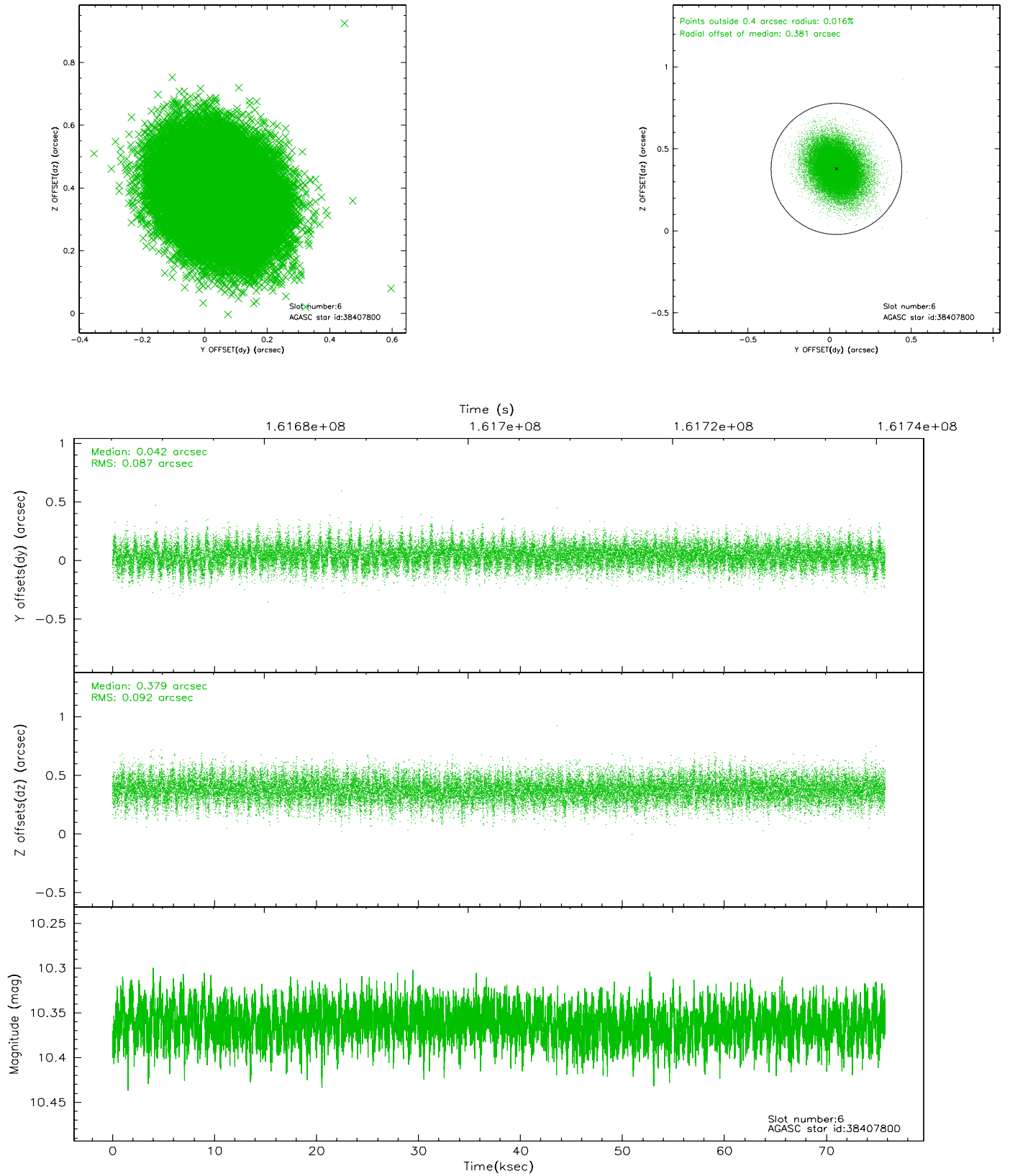
2.4.2 Slot 4



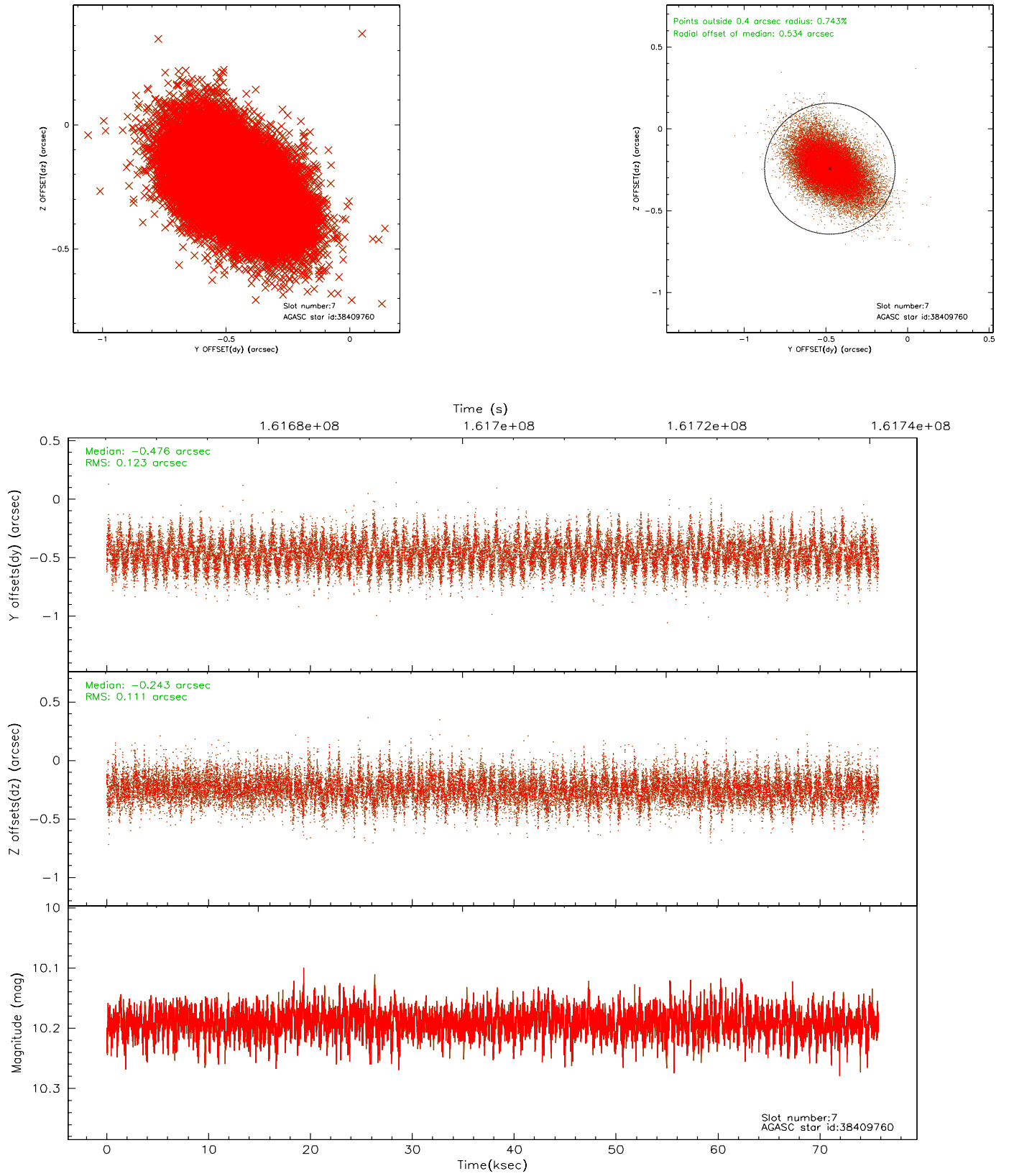
2.4.3 Slot 5



2.4.4 Slot 6

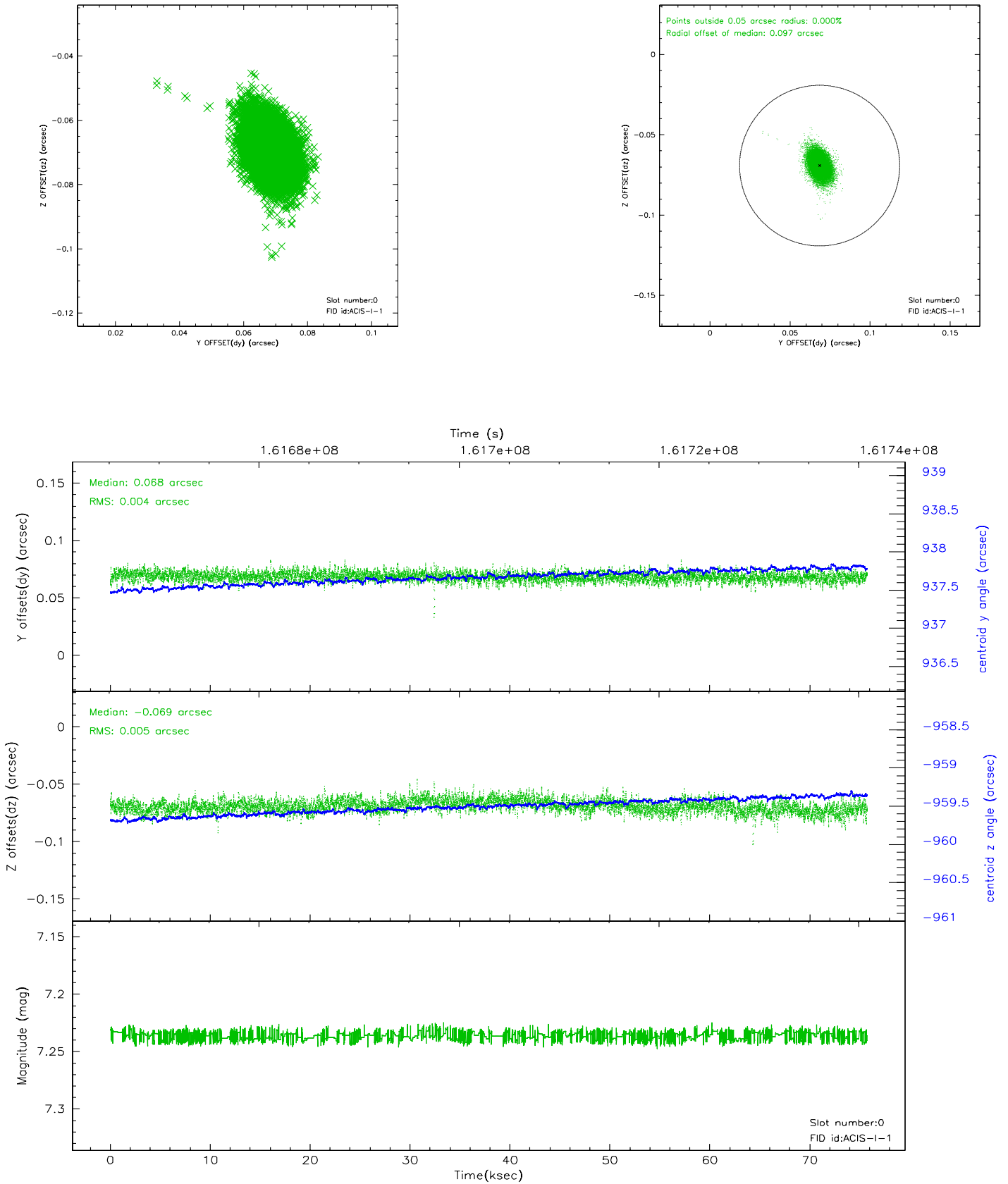


2.4.5 Slot 7

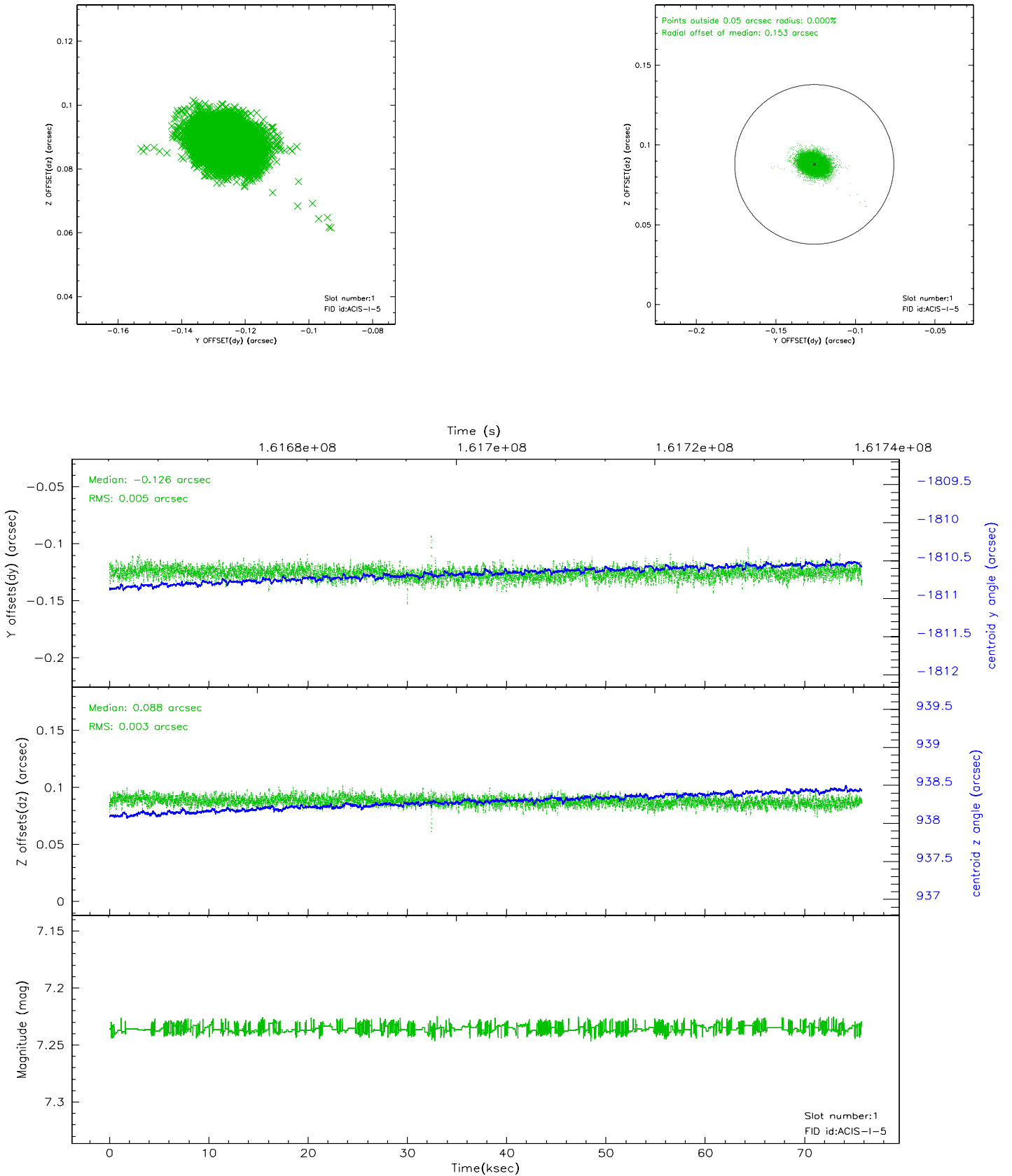


2.5 FID Slots

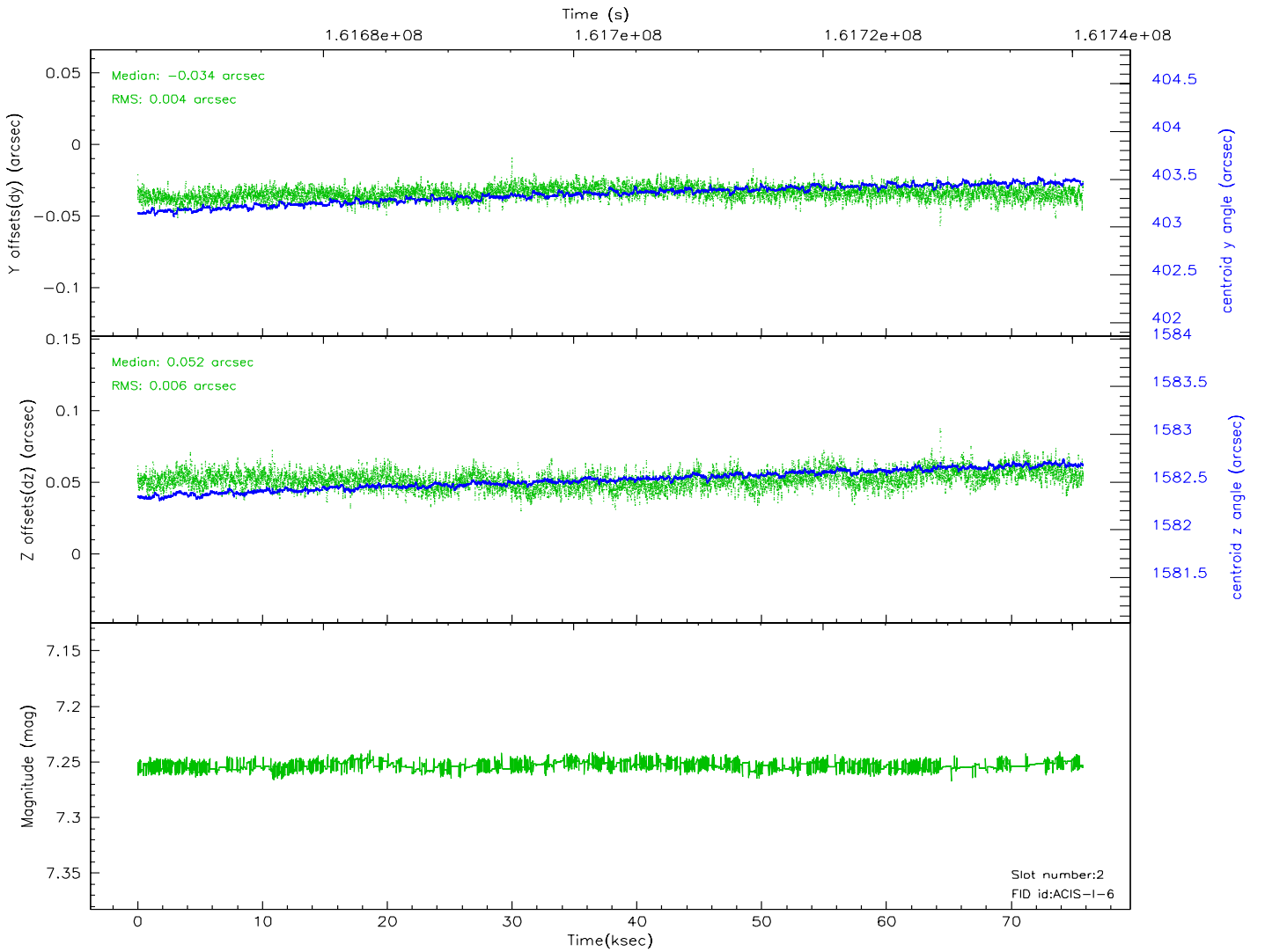
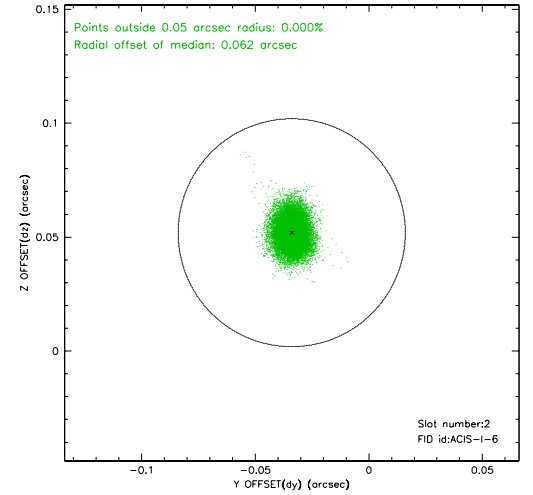
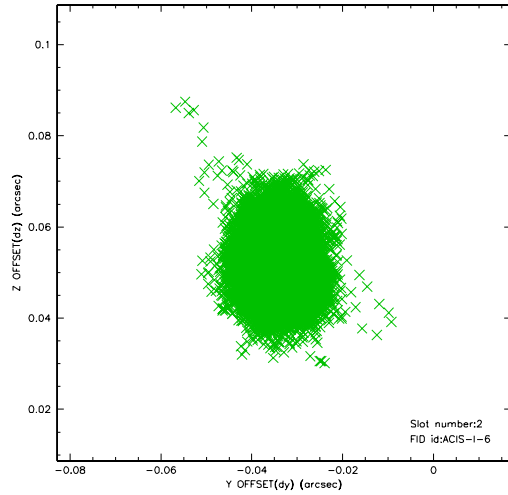
2.5.1 Slot 0



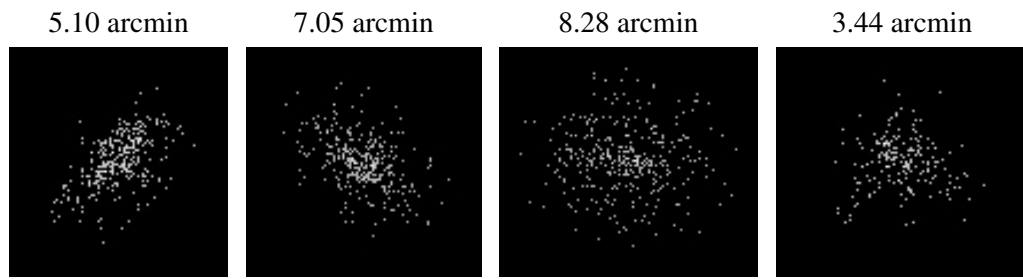
2.5.2 Slot 1



2.5.3 Slot 2



3 Point Sources



A Summary

A.1 Status

V&V Scientist	Joy Nichols
V&V Date (YYYY-MM-DD)	2006.07.28
V&V Edition	1
V&V Disposition and Status	OK
V&V Charge Time	75.34

A.2 Comments

Guide star in slot 7 was not tracked with sufficient accuracy and was excluded from the aspect solution. This does not affect the quality of the aspect solution.

Focal plane temperature is warmer than -118.7 C degrees during approximately the first 38 ksec of this observation. The ACIS spectral response calibration for the front-illuminated chips is less accurate at these warmer temperatures than it is at -119.7 C. The back-illuminatd chips are not affected at the focal plane temperatures recorded for this observation. Users whose science objectives depend on the most accurate spectral response (ie: fitting line-rich spectra) may notice an effect. Users whose science objectives do not depend on the most accurate spectral response should not notice an effect.