

V&V Reference Report

L2 ASCDS Version : 7.6.8

Observation 4245 - L2 Version 001
Chandra X-Ray Center

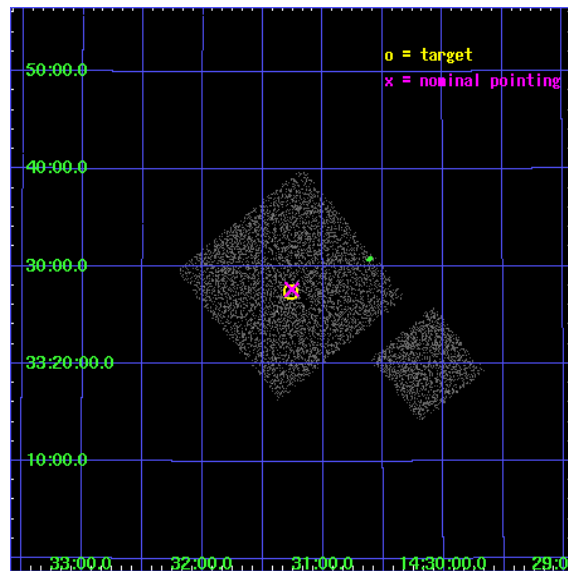
L2 Processing Date : Jul 29 2006

Contents

1	Front	2
2	OBI	3
2.1	OBI	3
2.1.1	Images	3
2.1.2	Bias	3
2.1.3	Parameters	4
2.1.4	Events	4
2.2	Compared Parameters	5
2.3	Aspect	6
2.4	Star Slots	9
2.4.1	Slot 3	9
2.4.2	Slot 4	10
2.4.3	Slot 5	11
2.4.4	Slot 6	12
2.4.5	Slot 7	13
2.5	FID Slots	14
2.5.1	Slot 0	14
2.5.2	Slot 1	15
2.5.3	Slot 2	16
3	Point Sources	17
A	Summary	18
A.1	Status	18
A.2	Comments	18

1 Front

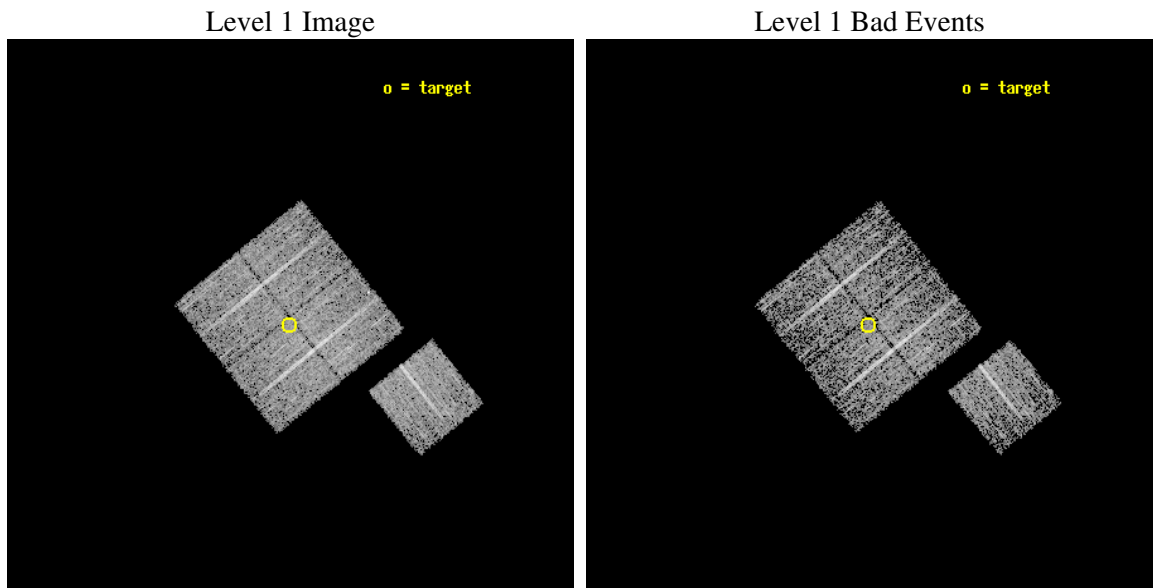
seq_num	900288
obs_id	4245
title	A CHANDRA WIDE-FIELD SURVEY TO MAP THE COSMIC WEB AND INVESTIGATE THE EVOLUTION OF NUCLEAR ACCRETION
observer	Dr. Christine Jones
object	SD28
dtcycle	0
cycle	P
ra_targ	217.816997
dec_targ	33.456918
ra_nom	217.81435247105
dec_nom	33.460949260444
roll_nom	141.01013933746
revision	2
ontime	4674.7999910116
livetime	4613.7202875914
ontime0	4671.6590107381
ontime1	4674.7999910116
ontime2	4668.5180305541
ontime3	4674.7999910116
ontime6	4674.7999910116
l2events	9128



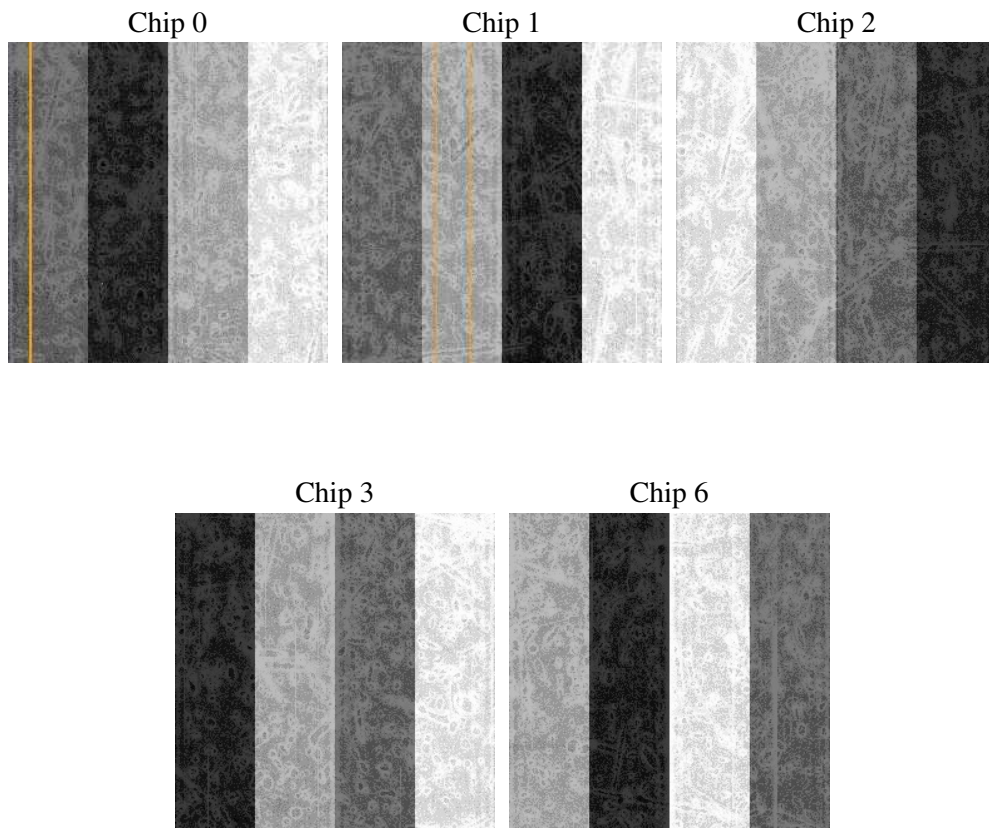
2 OBI

2.1 OBI

2.1.1 Images



2.1.2 Bias



2.1.3 Parameters

obi_num	1
ascdsver	7.6.8
caldbver	3.2.2
date	2006-07-29T20:28:49
revision	2

sched_exp_time	4900.000000
ontime	4680.1062773168
ontime0	4676.9653169513
ontime1	4680.1062773168
ontime2	4673.8243367672
ontime3	4680.1062773168
ontime6	4680.1062972248
l1events	113544

2.1.4 Events

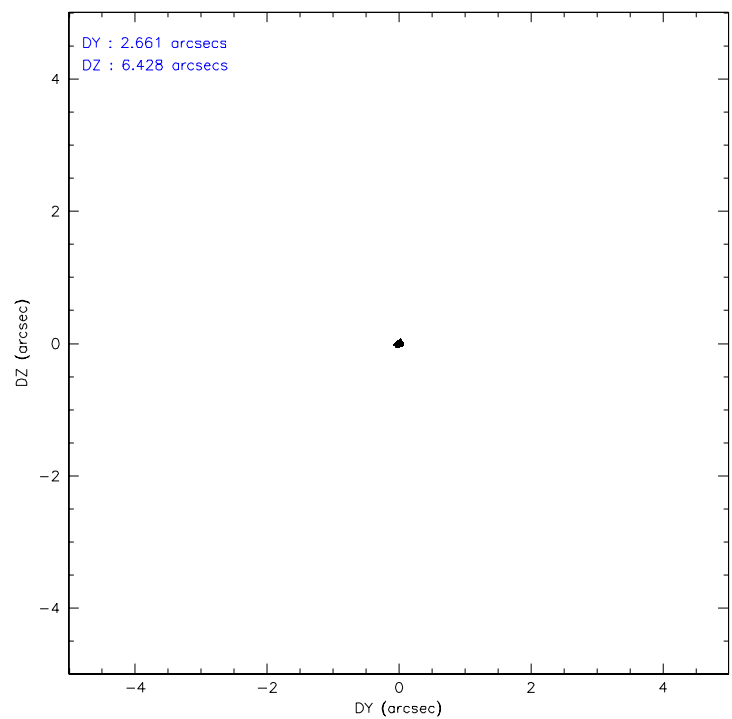
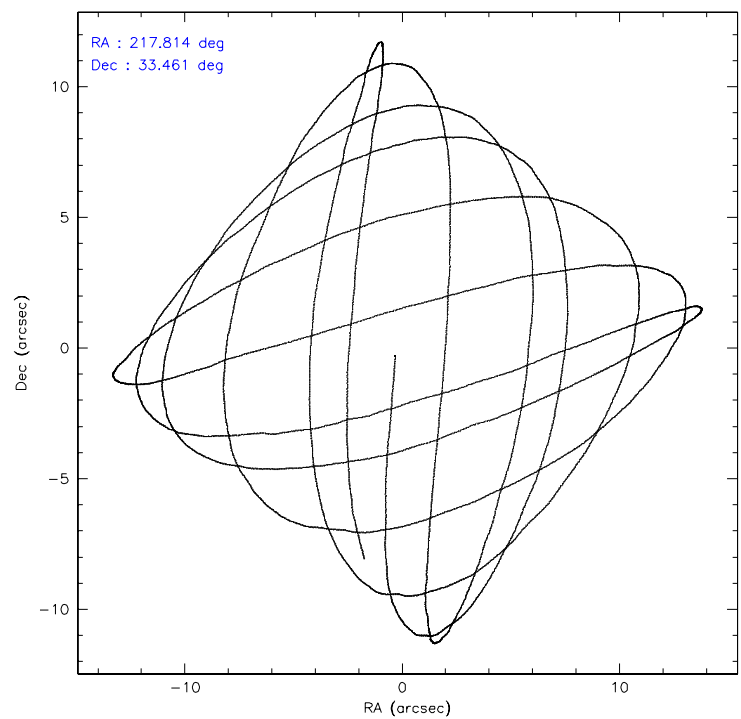
	ccd 0	ccd 1	ccd 2	ccd 3	ccd 6
level 1 events	21077	21494	24324	22871	23778
rejected events	18862	19208	21968	20828	21468
rejected %	89%	89%	90%	91%	90%

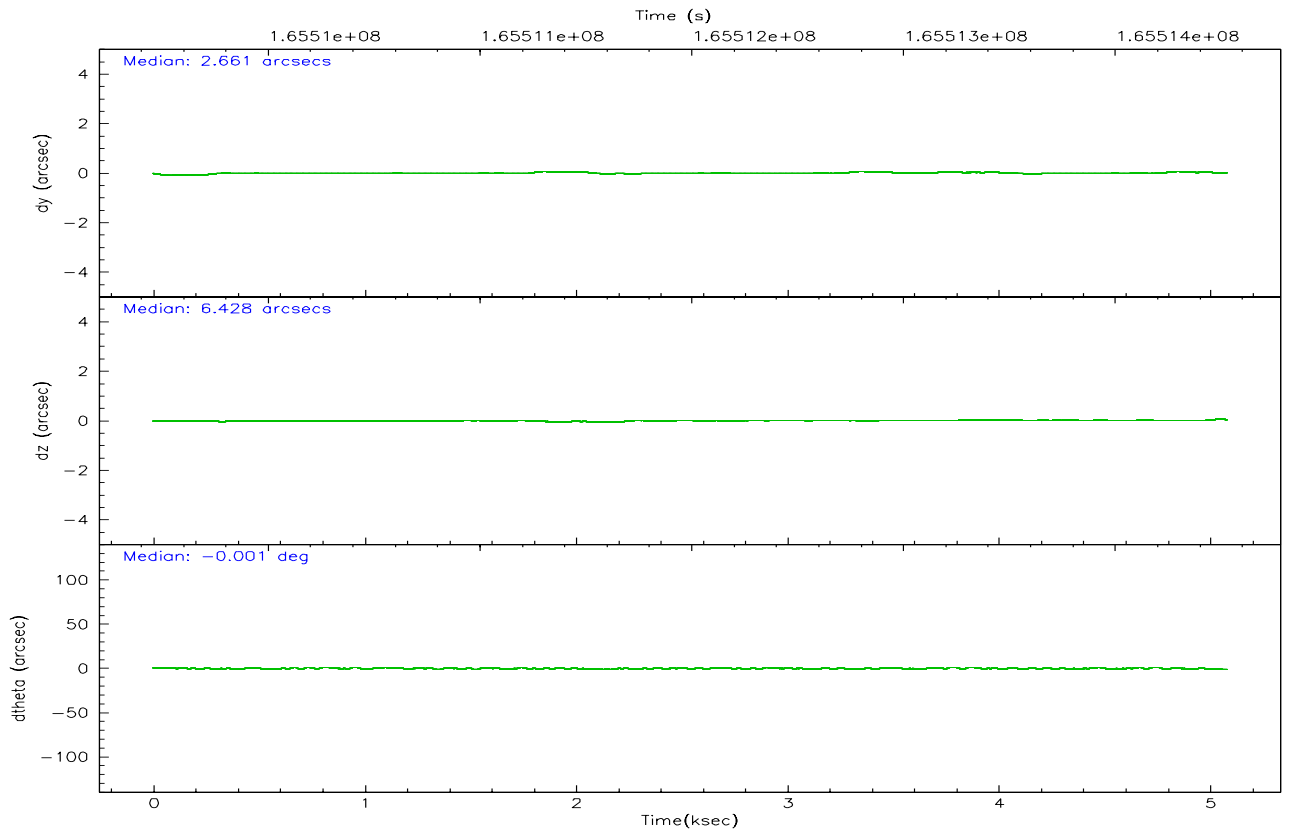
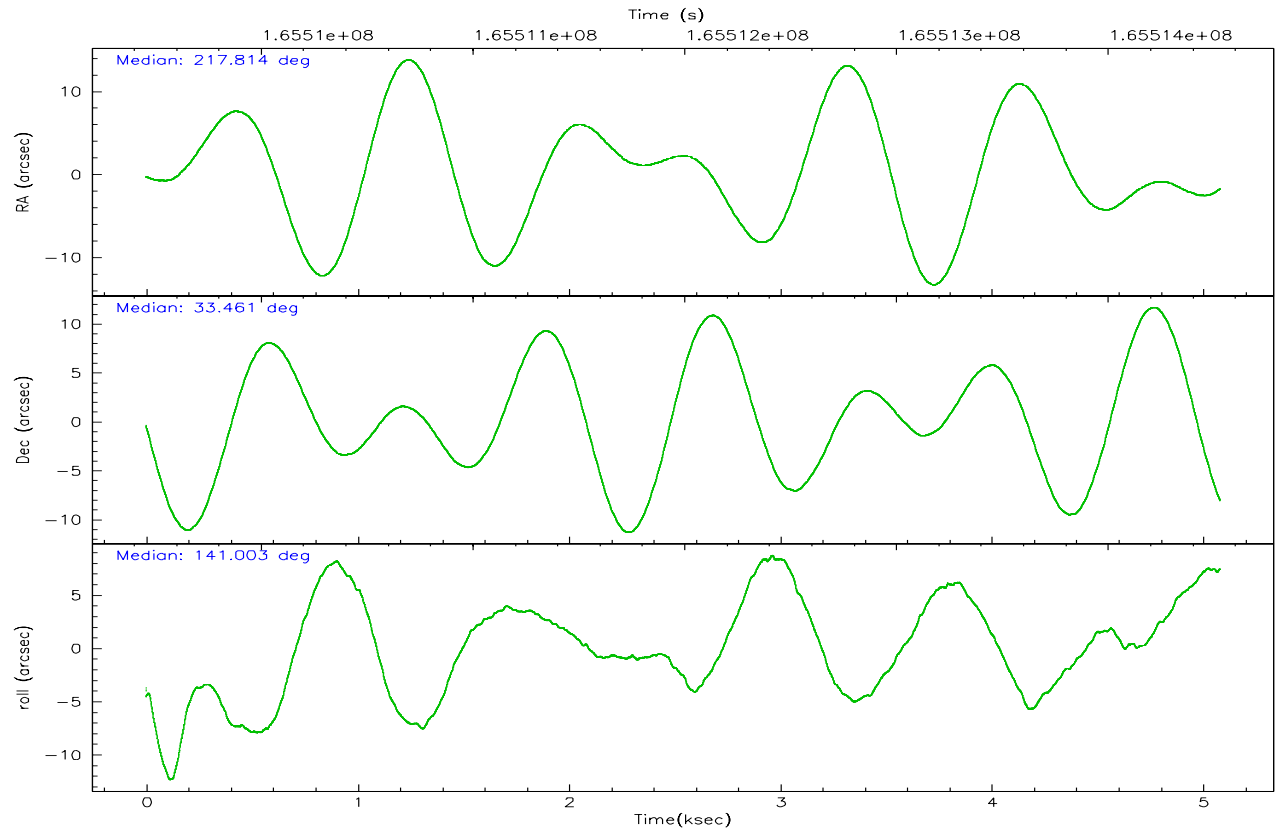
	ccd 0	ccd 1	ccd 2	ccd 3	ccd 6
grade 0 events	775	758	924	755	851
	3%	3%	3%	3%	3%
grade 1 events	11	10	12	11	15
	0%	0%	0%	0%	0%
grade 2 events	537	501	523	430	467
	2%	2%	2%	1%	1%
grade 3 events	247	275	256	259	276
	1%	1%	1%	1%	1%
grade 4 events	240	290	277	237	275
	1%	1%	1%	1%	1%
grade 5 events	696	682	630	773	766
	3%	3%	2%	3%	3%
grade 6 events	416	463	378	362	443
	1%	2%	1%	1%	1%
grade 7 events	18155	18515	21324	20044	20685
	86%	86%	87%	87%	86%

2.2 Compared Parameters

Parameter	Planned	Actual	Parameter	Planned	Actual
Instrument	ACIS	ACIS	Obspar format version number	6	6
Detector	ACIS-01236	ACIS-01236	Obspar file type	PREDICTED	ACTUAL
Grating	NONE	NONE	Obspar update status	NONE	UPDATED
Data mode	VFAINT	VFAINT	On-chip summing requested	N	N
Observation mode	POINTING	POINTING	Subarray requested	NONE	NONE
Pointing RA	217.846827	217.8143524710518	Alternating exposures requested	N	N
Pointing Dec	33.456840	33.46094926044399	Primary exposure time	0.000000	3.1
Pointing Roll	140.783552	141.0101393374575			
SIM focus pos (mm)	-0.782348	-0.7809083437167272			
SIM defocus (mm)	0	0.001439871863259334			
SIM translation stage pos (mm)	-233.592463	-233.5874344608287			
SIM translation stage offset (mm)	0	-0.005018542100998502			
Observation start time	165509634.184000	165509258.15494			
Observation start date	2003-03-31T14:52:50	2003-03-31T14:47:38			
Observation end time	165514534.184000	165514668.10517			
Observation end date	2003-03-31T16:14:30	2003-03-31T16:17:48			
Read mode	TIMED	TIMED			

2.3 Aspect



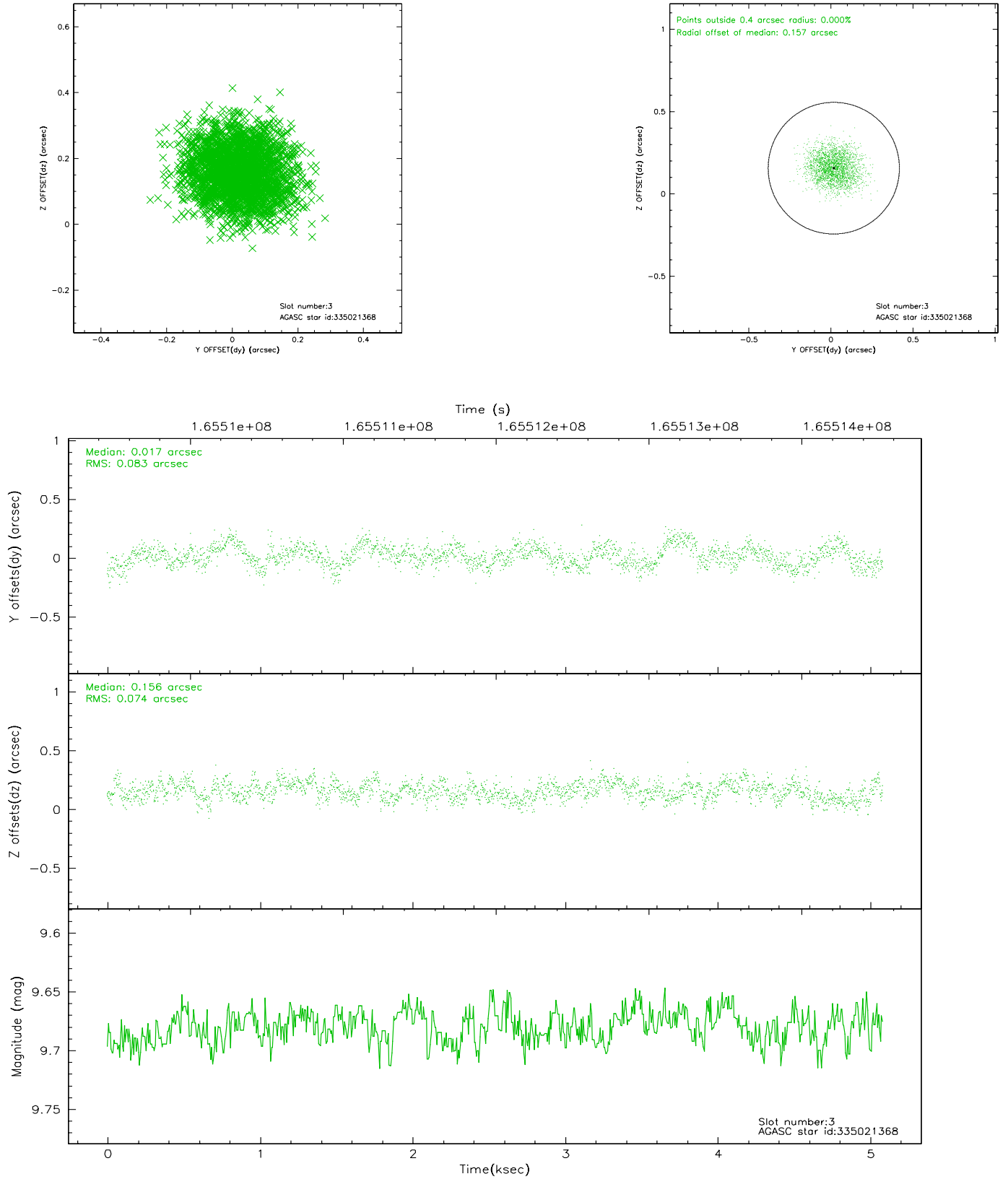


Slot Statistics

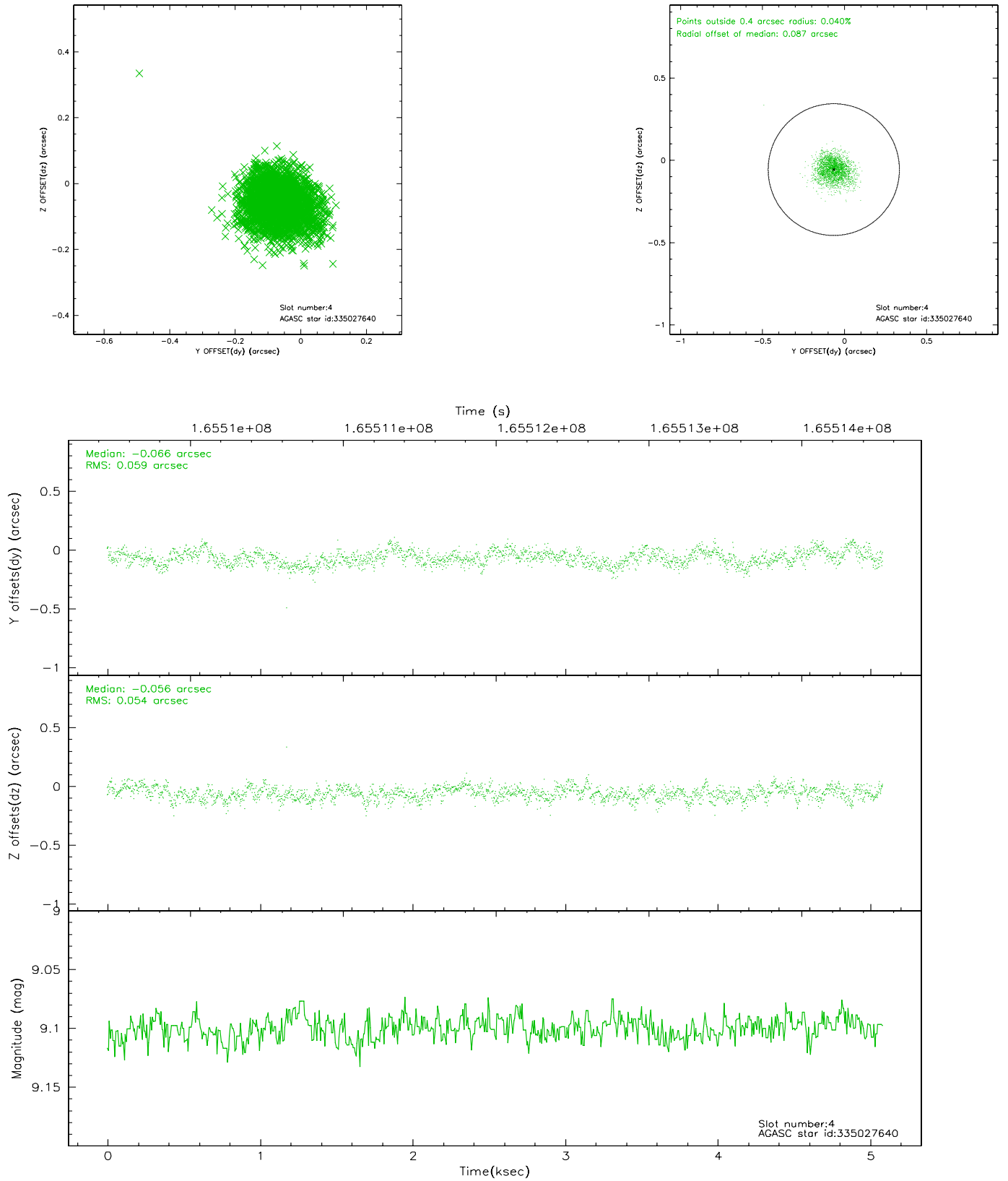
slot	status	id	mag	n_pts	med_dy	med_dz	dr1	dr2	ra	dec	mean_y	mean_z
0	FID	ACIS-I-1	7.26	1239	-0.009	0.019	0.006	0.010	0.000000	0.000000	937.12	-829.80
1	FID	ACIS-I-5	7.24	1240	-0.051	0.042	0.005	0.009	0.000000	0.000000	-1810.34	1067.16
2	FID	ACIS-I-6	7.26	1240	-0.032	0.009	0.006	0.010	0.000000	0.000000	401.38	1712.95
3	GUIDE	335021368	9.68	2481	0.017	0.156	0.120	0.185	217.529643	33.934817	1823.18	-735.01
4	GUIDE	335027640	9.10	2481	-0.066	-0.056	0.083	0.134	218.092211	33.193770	-1170.11	265.10
5	GUIDE	335028696	9.23	2479	-0.022	-0.009	0.087	0.148	217.260519	33.844112	2242.53	24.68
6	GUIDE	335029384	8.50	2481	-0.078	-0.030	0.063	0.101	217.848061	33.088477	-840.54	1024.89
7	GUIDE	335028240	9.17	2476	0.145	-0.059	0.086	0.145	216.746851	33.385009	2409.31	2278.03

2.4 Star Slots

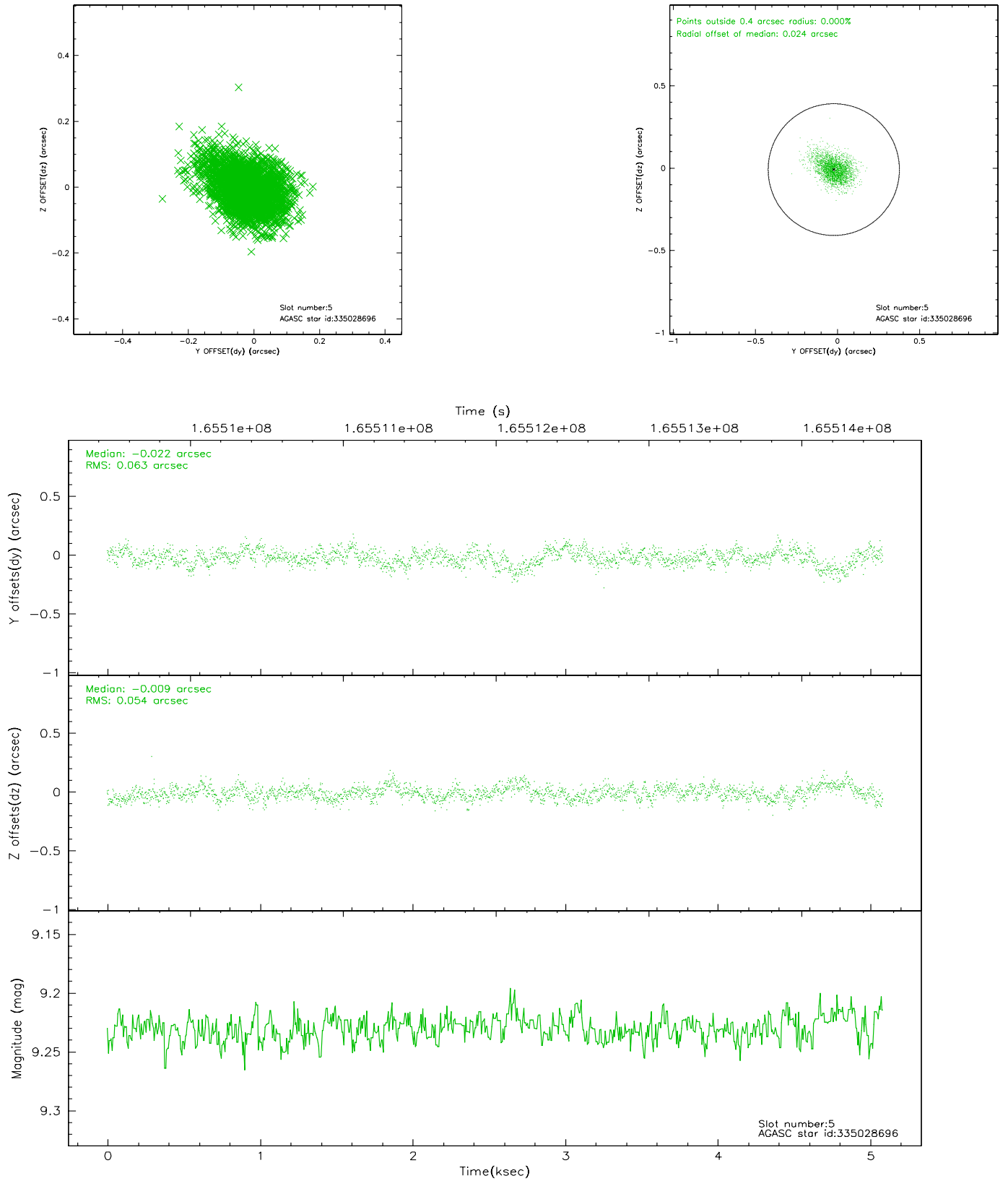
2.4.1 Slot 3



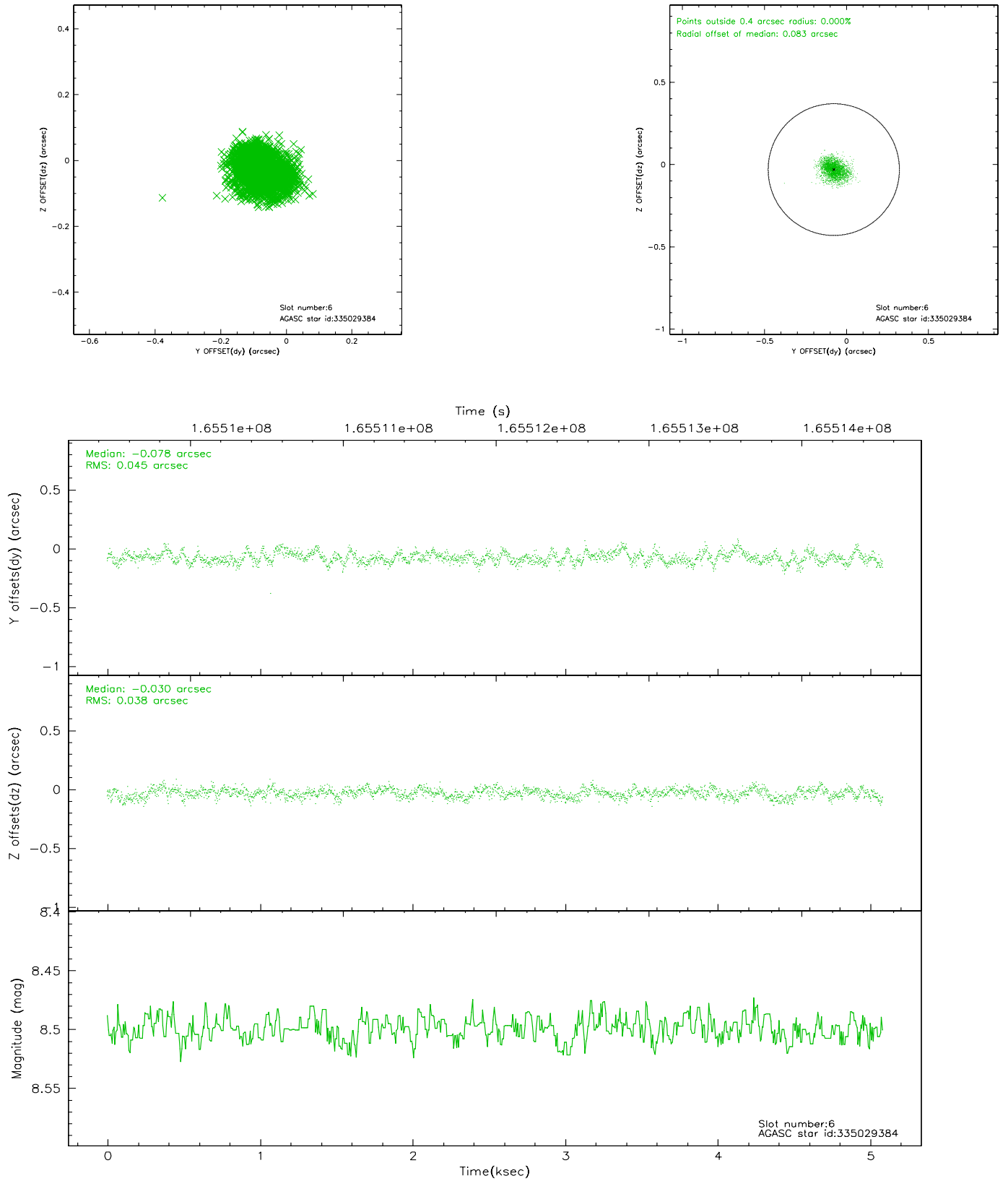
2.4.2 Slot 4



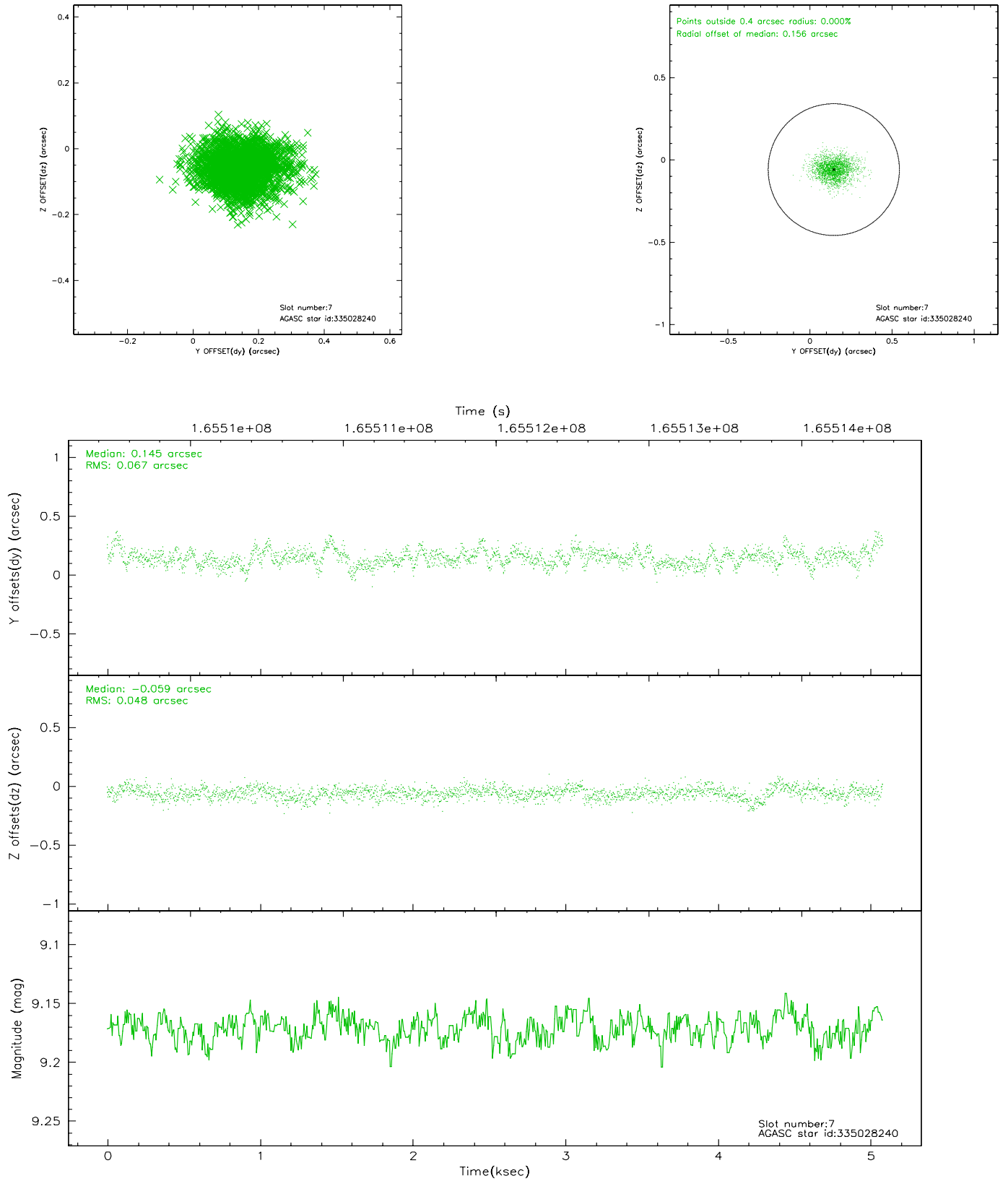
2.4.3 Slot 5



2.4.4 Slot 6

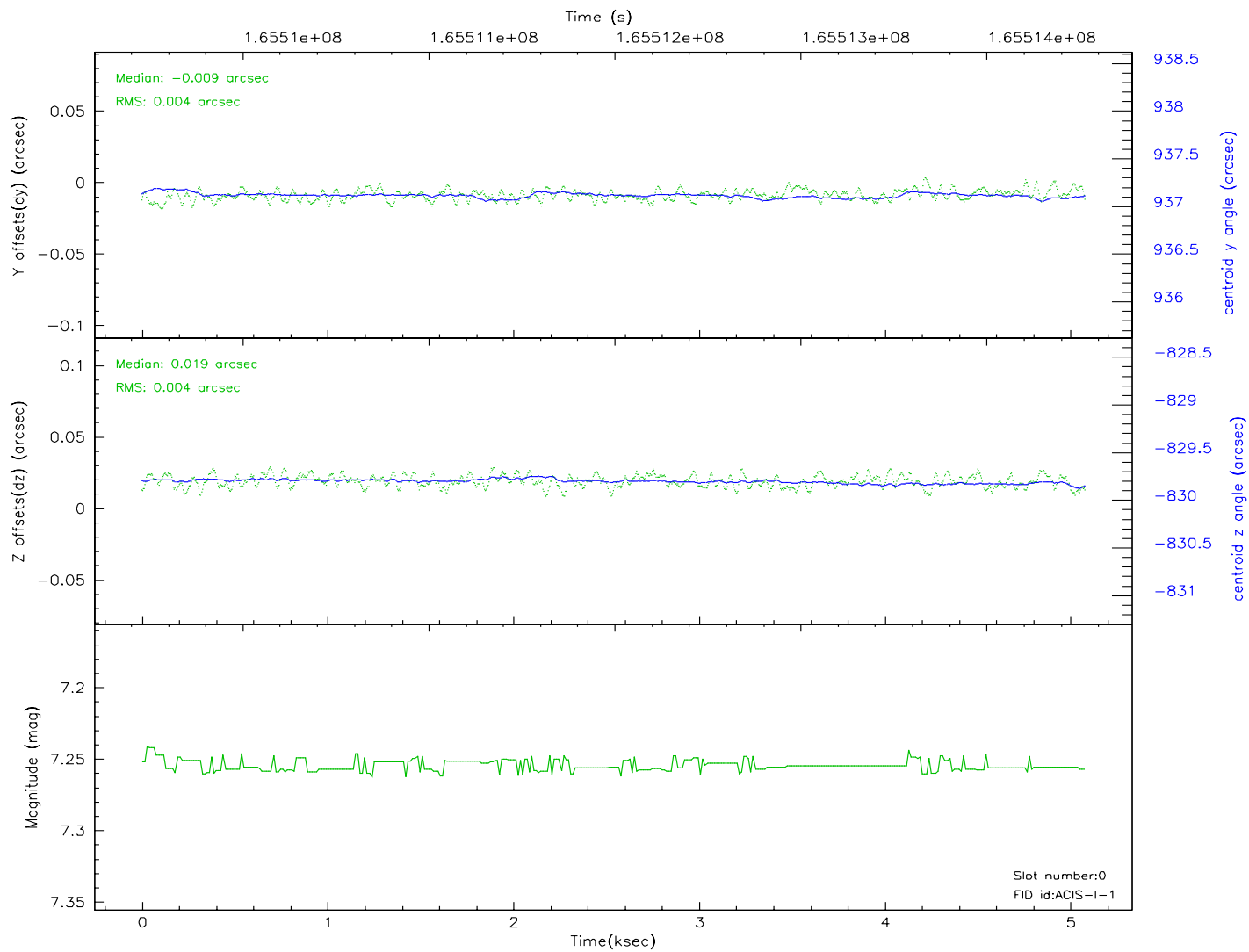
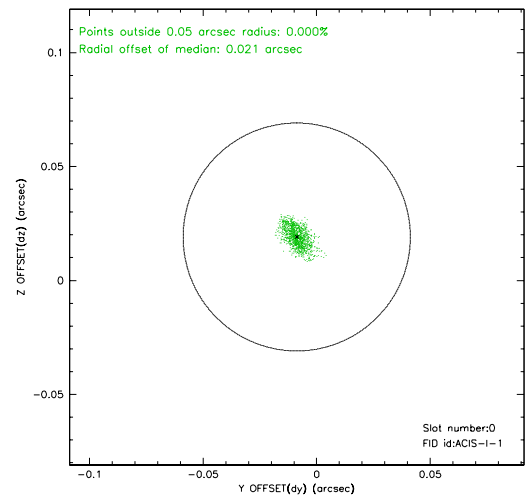
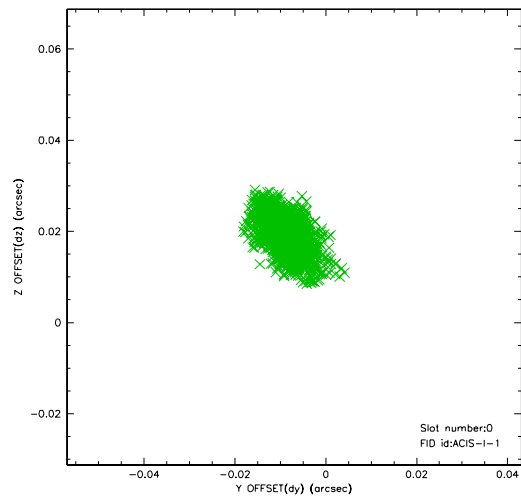


2.4.5 Slot 7

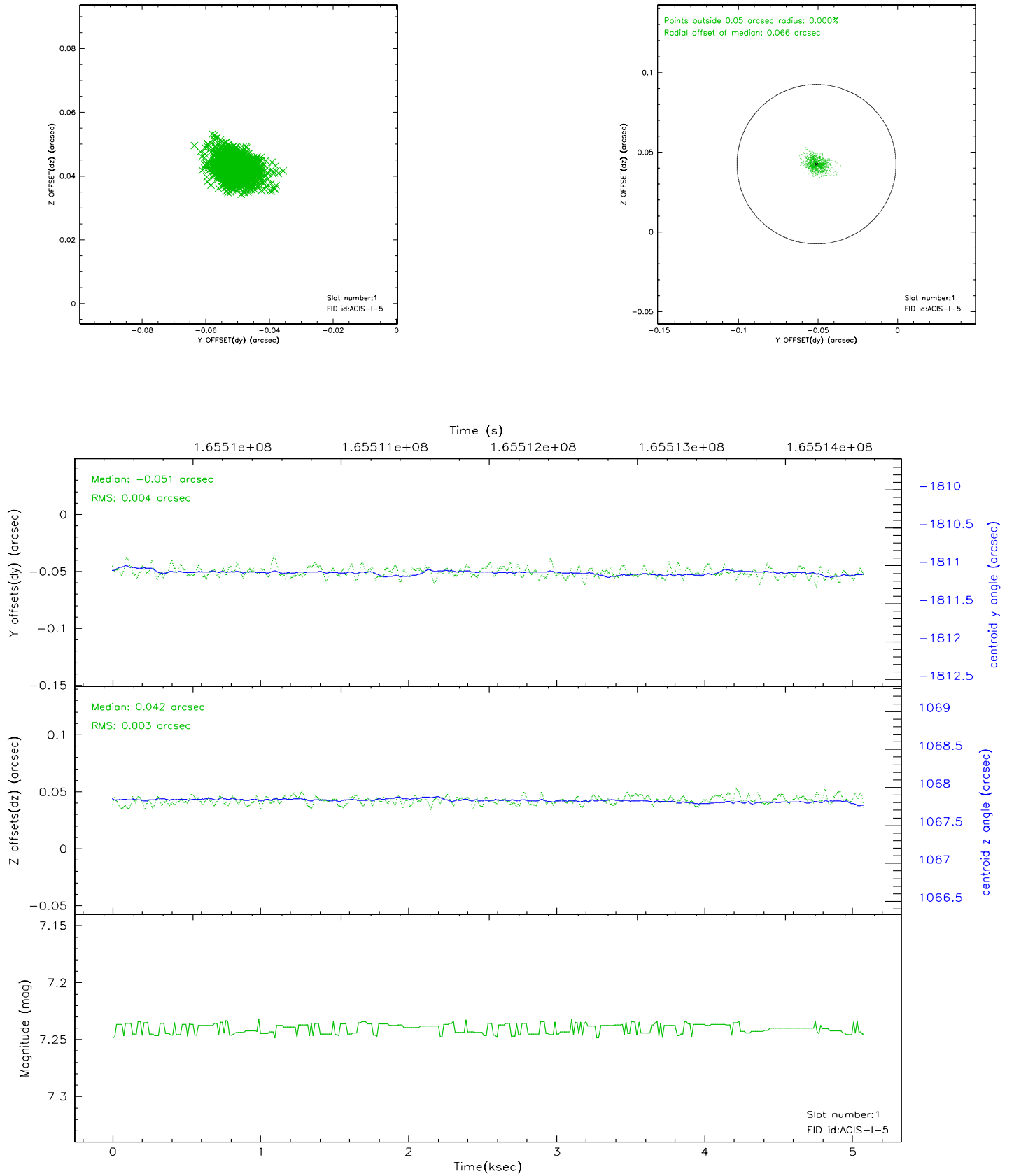


2.5 FID Slots

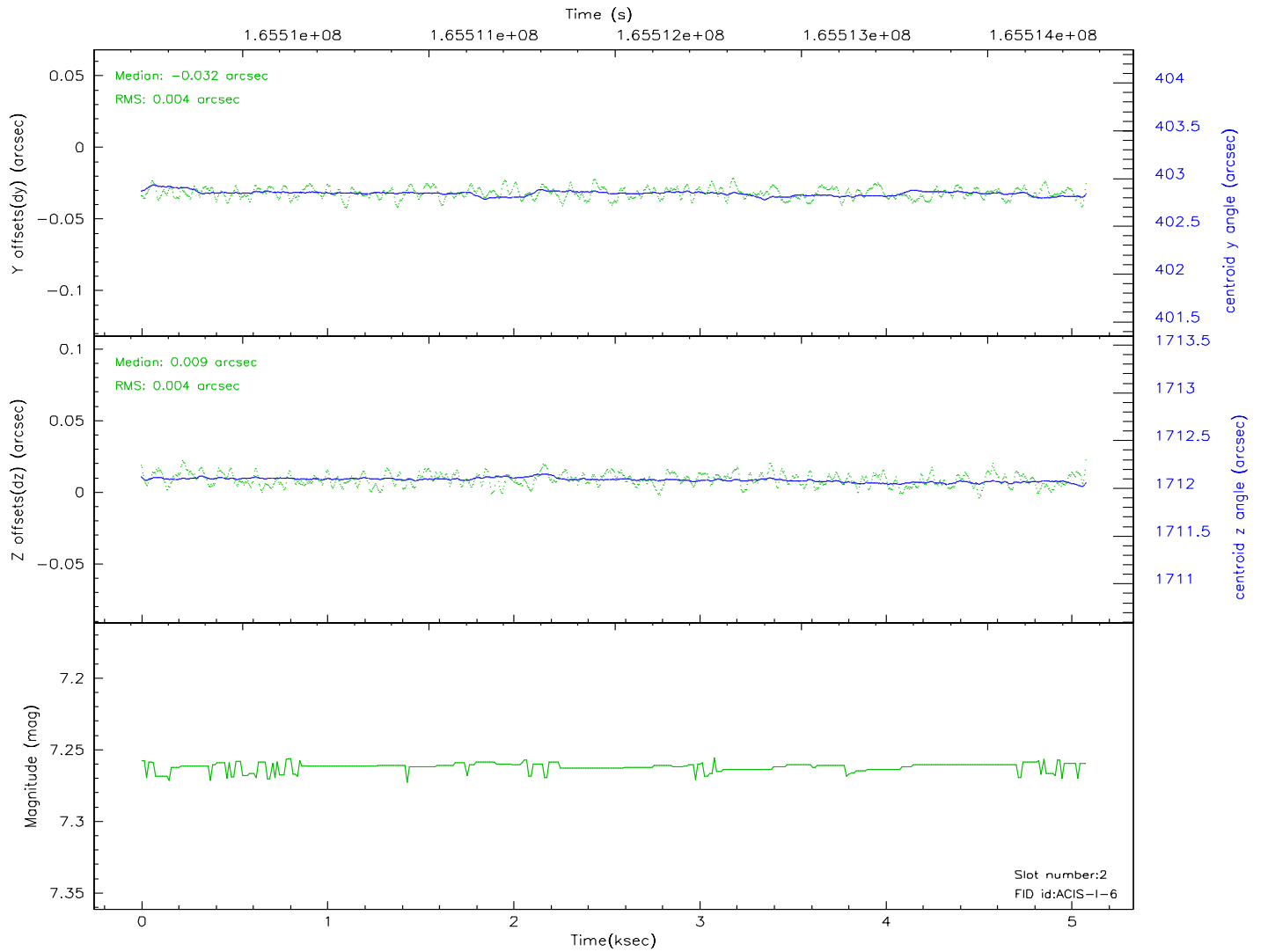
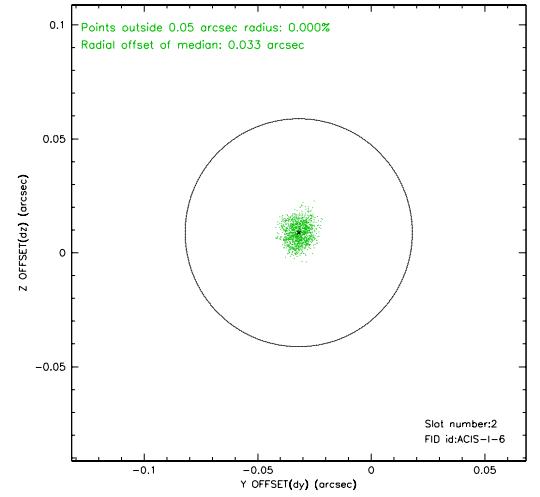
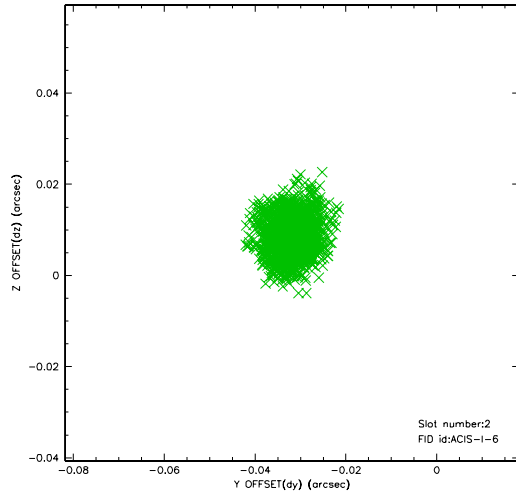
2.5.1 Slot 0



2.5.2 Slot 1



2.5.3 Slot 2



3 Point Sources

8.70 arcmin



A Summary

A.1 Status

V&V Scientist	Jen Lauer
V&V Date (YYYY-MM-DD)	2006.07.30
V&V Edition	1
V&V Disposition and Status	OK
V&V Charge Time	4.674

A.2 Comments