

V&V Reference Report

L2 ASCDS Version : 7.6.8

Observation 4225 - L2 Version 001
Chandra X-Ray Center

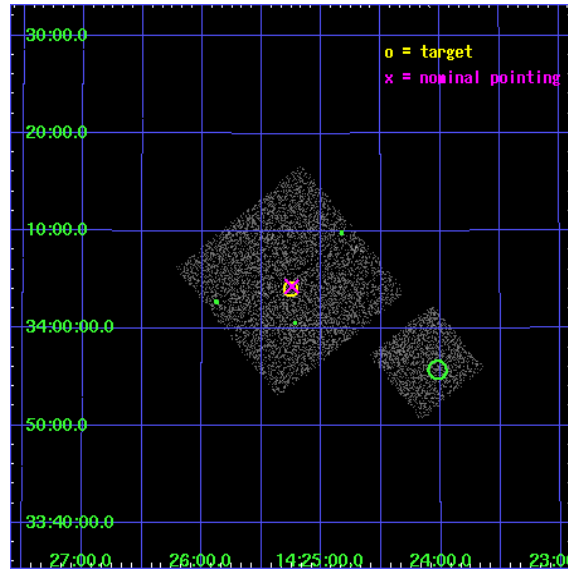
L2 Processing Date : Jul 25 2006

Contents

1	Front	2
2	OBI	3
2.1	OBI	3
2.1.1	Images	3
2.1.2	Bias	3
2.1.3	Parameters	4
2.1.4	Events	4
2.2	Compared Parameters	5
2.3	Aspect	6
2.4	Star Slots	9
2.4.1	Slot 3	9
2.4.2	Slot 4	10
2.4.3	Slot 5	11
2.4.4	Slot 6	12
2.4.5	Slot 7	13
2.5	FID Slots	14
2.5.1	Slot 0	14
2.5.2	Slot 1	15
2.5.3	Slot 2	16
3	Point Sources	17
A	Summary	18
A.1	Status	18
A.2	Comments	18

1 Front

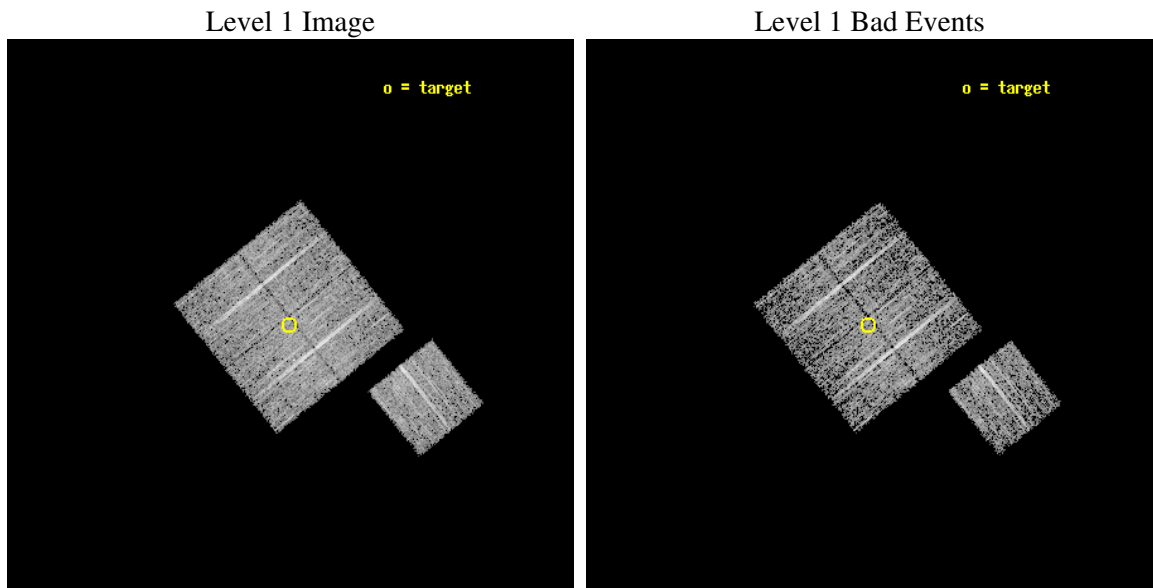
seq_num	900268
obs_id	4225
title	A CHANDRA WIDE-FIELD SURVEY TO MAP THE COSMIC WEB AND INVESTIGATE THE EVOLUTION OF NUCLEAR ACCRETION
observer	Dr. Christine Jones
object	SS24
dtcycle	0
cycle	P
ra_targ	216.314346
dec_targ	34.068
ra_nom	216.31160879858
dec_nom	34.072022464093
roll_nom	141.01023911854
revision	3
ontime	4777.0999908149
livetime	4714.6836625851
ontime0	4777.0999908149
ontime1	4777.0999908149
ontime2	4777.0999908149
ontime3	4777.0999908149
ontime6	4777.0999908149
l2events	9773



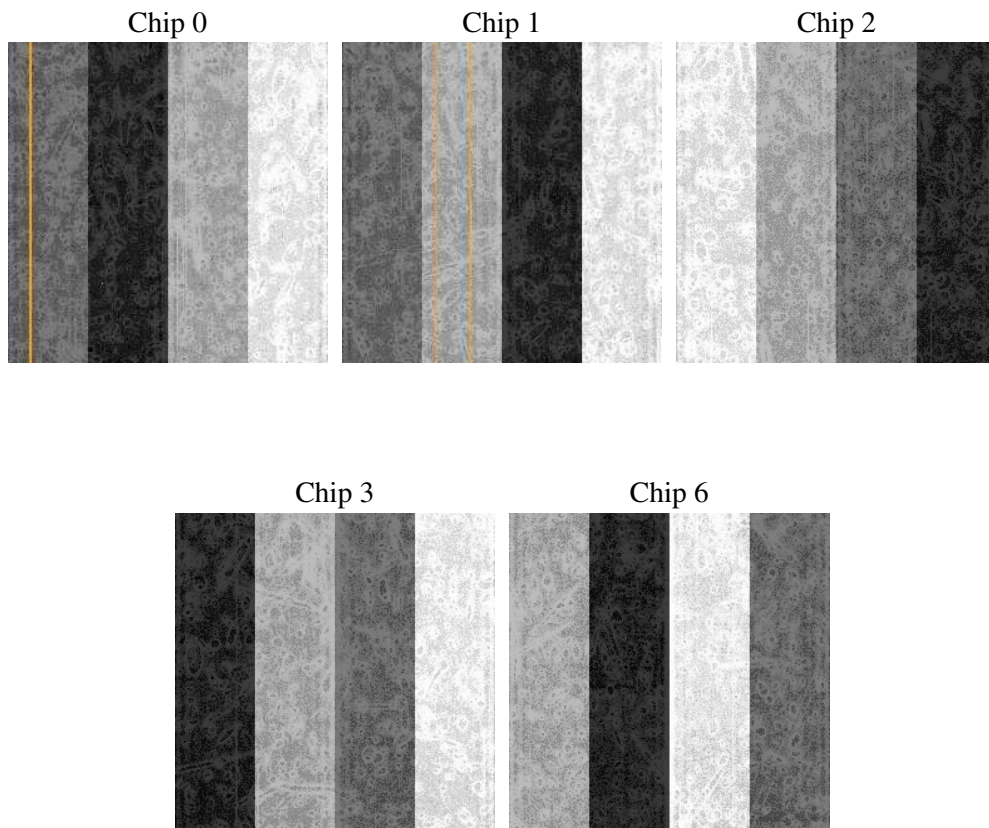
2 OBI

2.1 OBI

2.1.1 Images



2.1.2 Bias



2.1.3 Parameters

obi_num	0
ascdsver	7.6.8
caldsver	3.2.2
date	2006-07-26T01:08:27
revision	3

sched_exp_time	5000.000000
ontime	4780.6224114299
ontime0	4780.6224114299
ontime1	4780.6224114299
ontime2	4780.6224114299
ontime3	4780.6224114299
ontime6	4780.6224313676
l1events	122407

2.1.4 Events

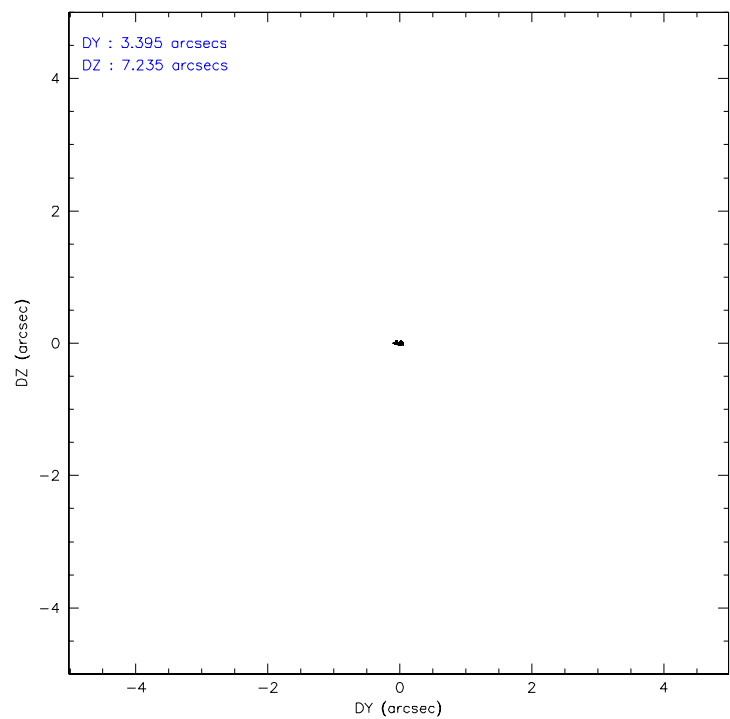
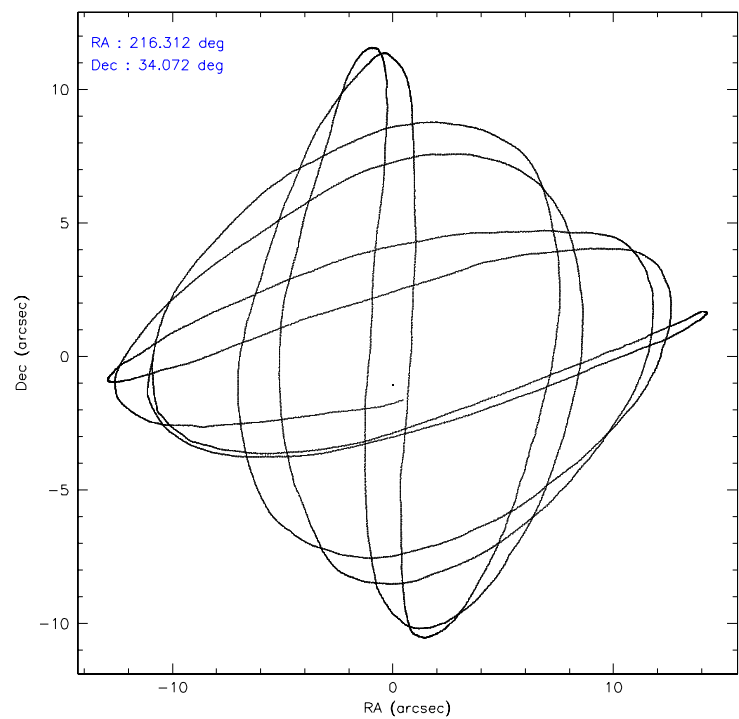
	ccd 0	ccd 1	ccd 2	ccd 3	ccd 6
level 1 events	23237	22978	25409	25863	24920
rejected events	20888	20508	23073	23584	22521
rejected %	89%	89%	90%	91%	90%

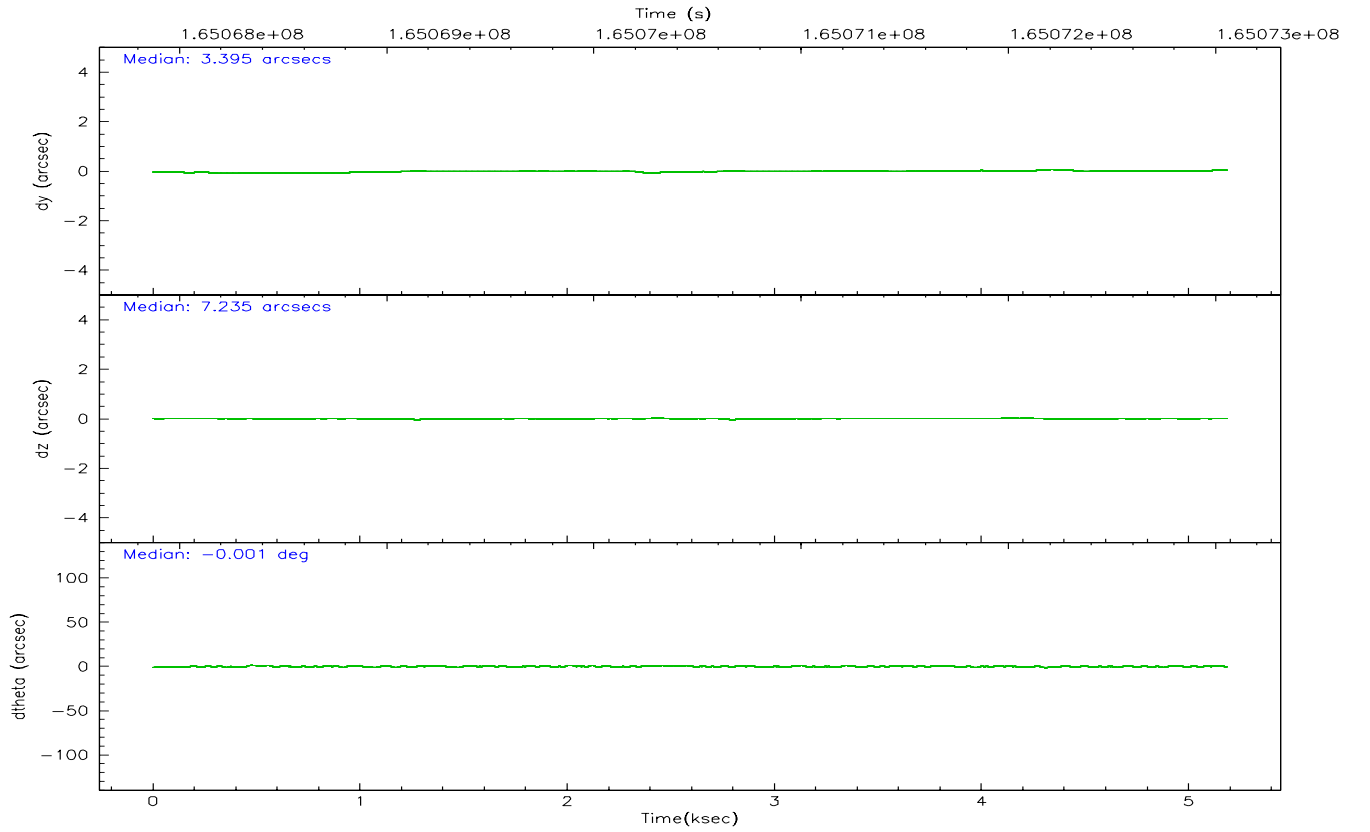
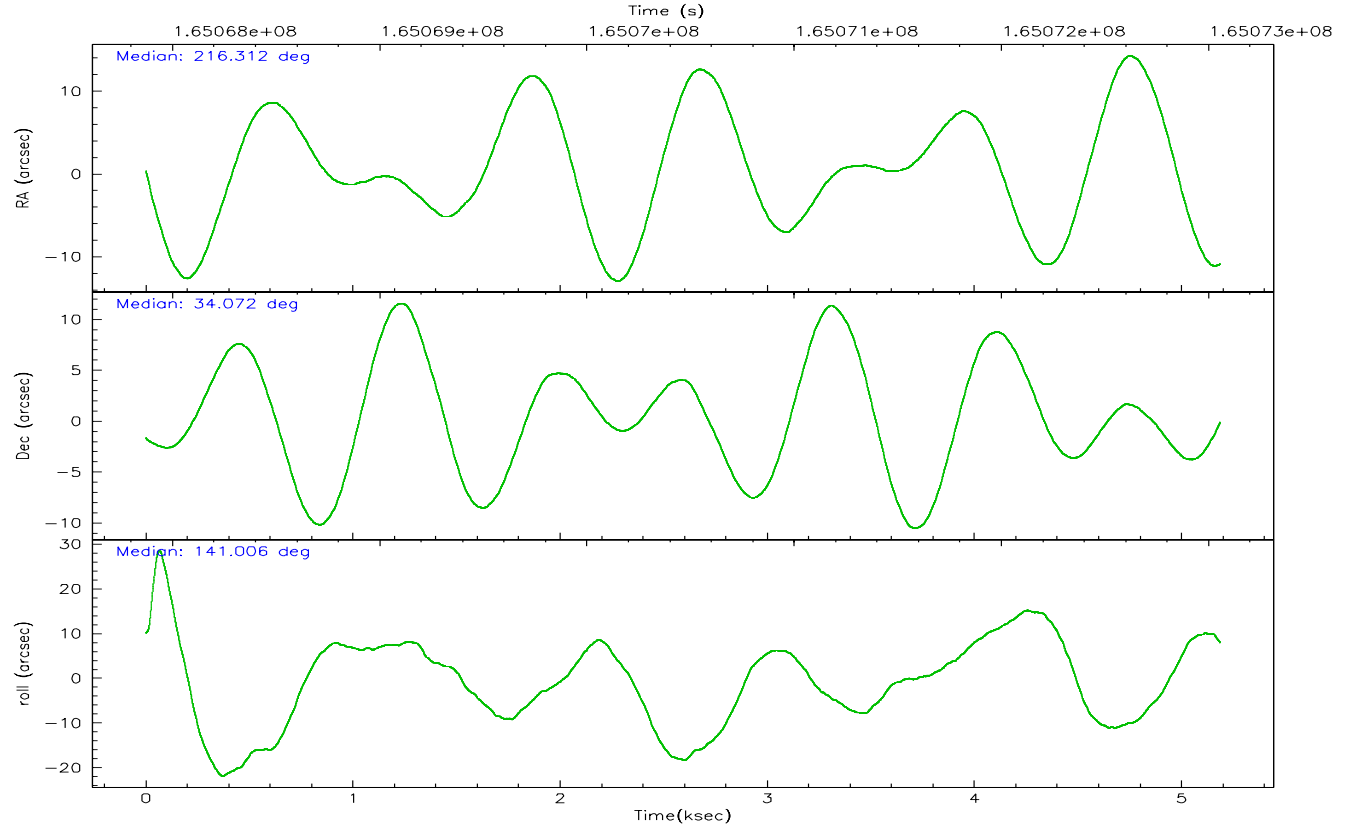
	ccd 0	ccd 1	ccd 2	ccd 3	ccd 6
grade 0 events	809	870	896	906	845
	3%	3%	3%	3%	3%
grade 1 events	12	18	12	9	6
	0%	0%	0%	0%	0%
grade 2 events	563	556	500	514	517
	2%	2%	1%	1%	2%
grade 3 events	276	292	259	251	257
	1%	1%	1%	0%	1%
grade 4 events	261	276	261	221	277
	1%	1%	1%	0%	1%
grade 5 events	707	807	642	835	759
	3%	3%	2%	3%	3%
grade 6 events	444	478	422	389	504
	1%	2%	1%	1%	2%
grade 7 events	20165	19681	22417	22738	21755
	86%	85%	88%	87%	87%

2.2 Compared Parameters

Parameter	Planned	Actual	Parameter	Planned	Actual
Instrument	ACIS	ACIS	Obspar format version number	6	6
Detector	ACIS-01236	ACIS-01236	Obspar file type	PREDICTED	ACTUAL
Grating	NONE	NONE	Obspar update status	NONE	UPDATED
Data mode	VFAINT	VFAINT	On-chip summing requested	N	N
Observation mode	POINTING	POINTING	Subarray requested	NONE	NONE
Pointing RA	216.344380	216.3116087985794	Alternating exposures requested	N	N
Pointing Dec	34.067916	34.07202246409314	Primary exposure time	0.000000	3.1
Pointing Roll	140.783177	141.0102391185359			
SIM focus pos (mm)	-0.782348	-0.7809083437167272			
SIM defocus (mm)	0	0.001439871863259334			
SIM translation stage pos (mm)	-233.592463	-233.5874344608287			
SIM translation stage offset (mm)	0	-0.005018542100998502			
Observation start time	165068059.184000	165067683.52383			
Observation start date	2003-03-26T12:13:15	2003-03-26T12:08:03			
Observation end time	165073059.184000	165073193.41156			
Observation end date	2003-03-26T13:36:35	2003-03-26T13:39:53			
Read mode	TIMED	TIMED			

2.3 Aspect



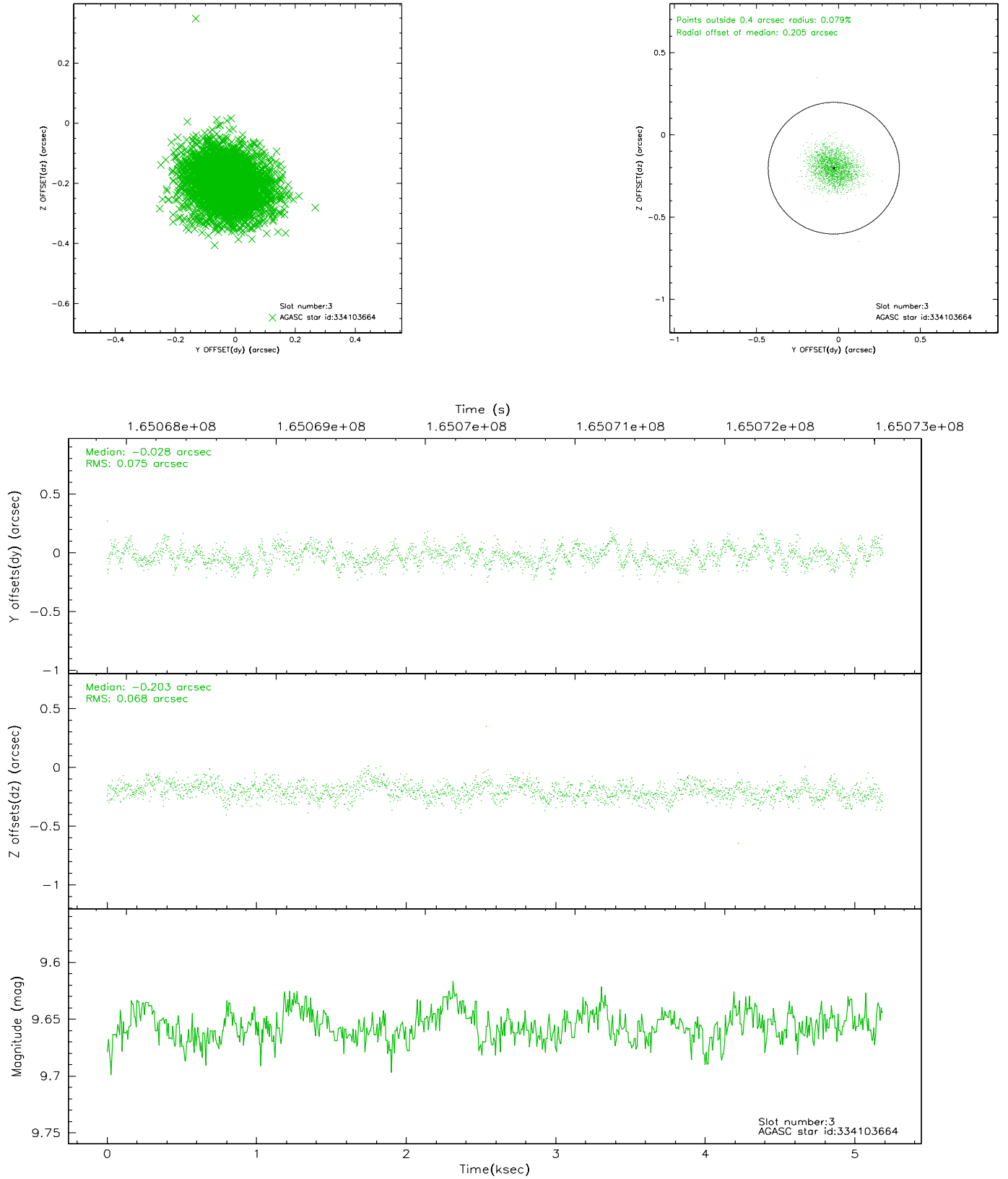


Slot Statistics

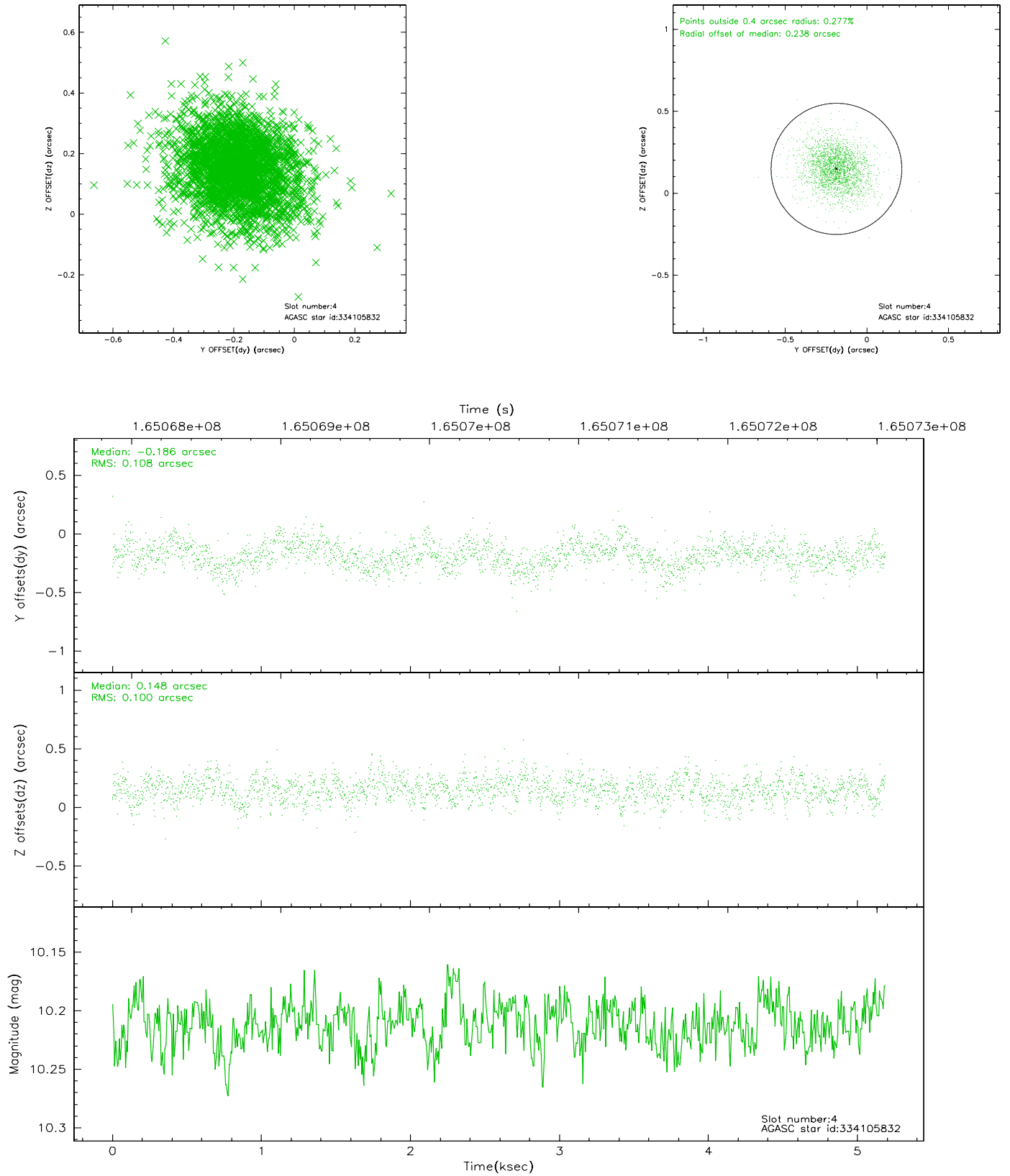
slot	status	id	mag	n_pts	med_dy	med_dz	dr1	dr2	ra	dec	mean_y	mean_z
0	FID	ACIS-I-1	7.25	1265	-0.000	0.043	0.010	0.018	0.000000	0.000000	936.38	-830.61
1	FID	ACIS-I-5	7.24	1265	-0.064	0.054	0.009	0.016	0.000000	0.000000	-1811.11	1066.36
2	FID	ACIS-I-6	7.26	1265	-0.027	-0.026	0.010	0.017	0.000000	0.000000	400.67	1712.07
3	GUIDE	334103664	9.66	2530	-0.028	-0.203	0.108	0.171	215.408944	33.871296	1726.88	2306.14
4	GUIDE	334105832	10.21	2525	-0.186	0.148	0.153	0.259	215.847735	34.556918	2256.84	-434.63
5	GUIDE	335021128	9.36	2526	0.122	0.161	0.084	0.137	216.159551	34.422539	1233.99	-642.53
6	GUIDE	335024096	10.61	2483	-0.117	-0.050	0.169	0.267	216.160719	34.374830	1122.37	-511.82
7	GUIDE	335027408	10.40	2526	0.200	-0.048	0.218	0.378	216.490923	33.575832	-1459.57	1093.97

2.4 Star Slots

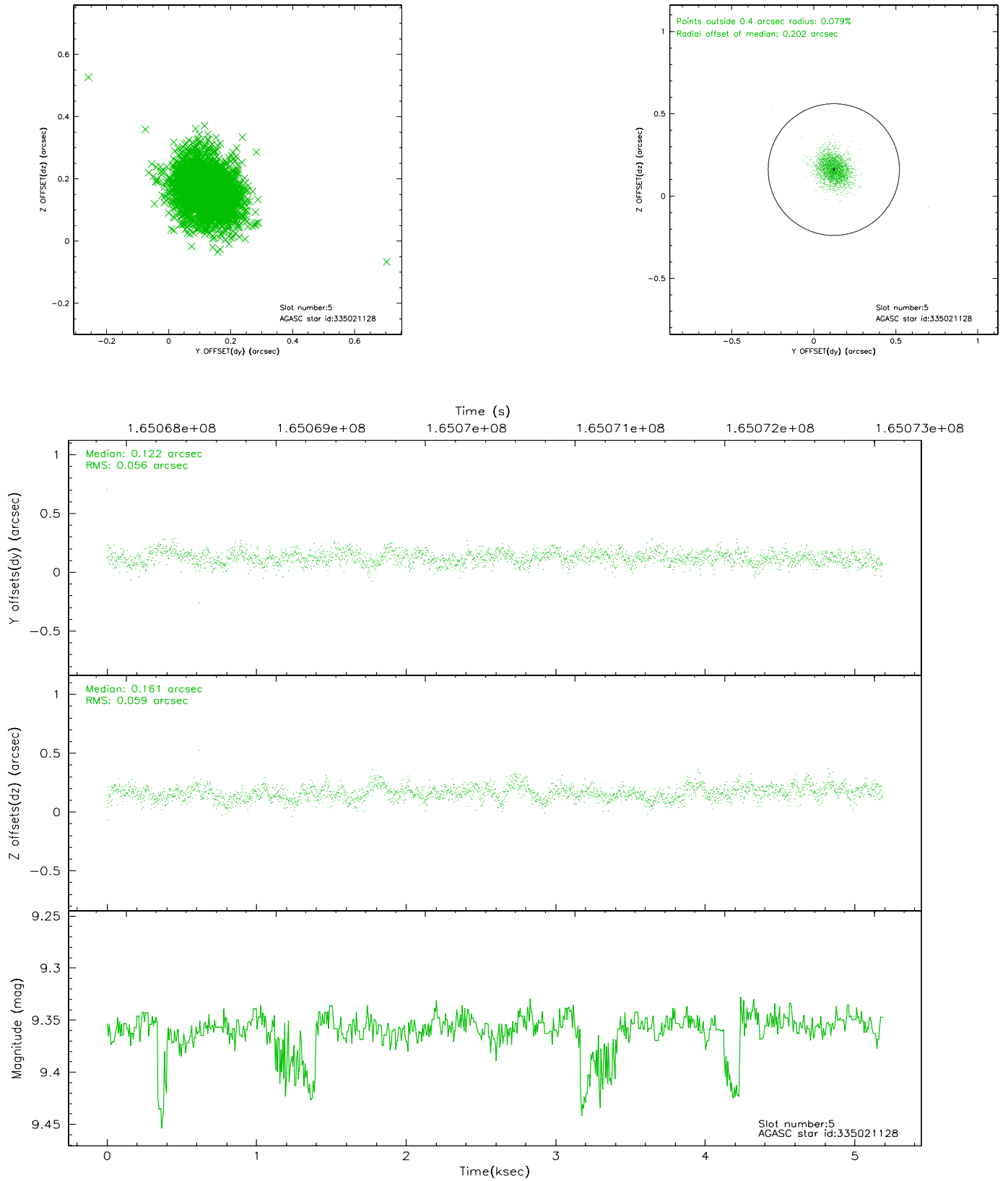
2.4.1 Slot 3



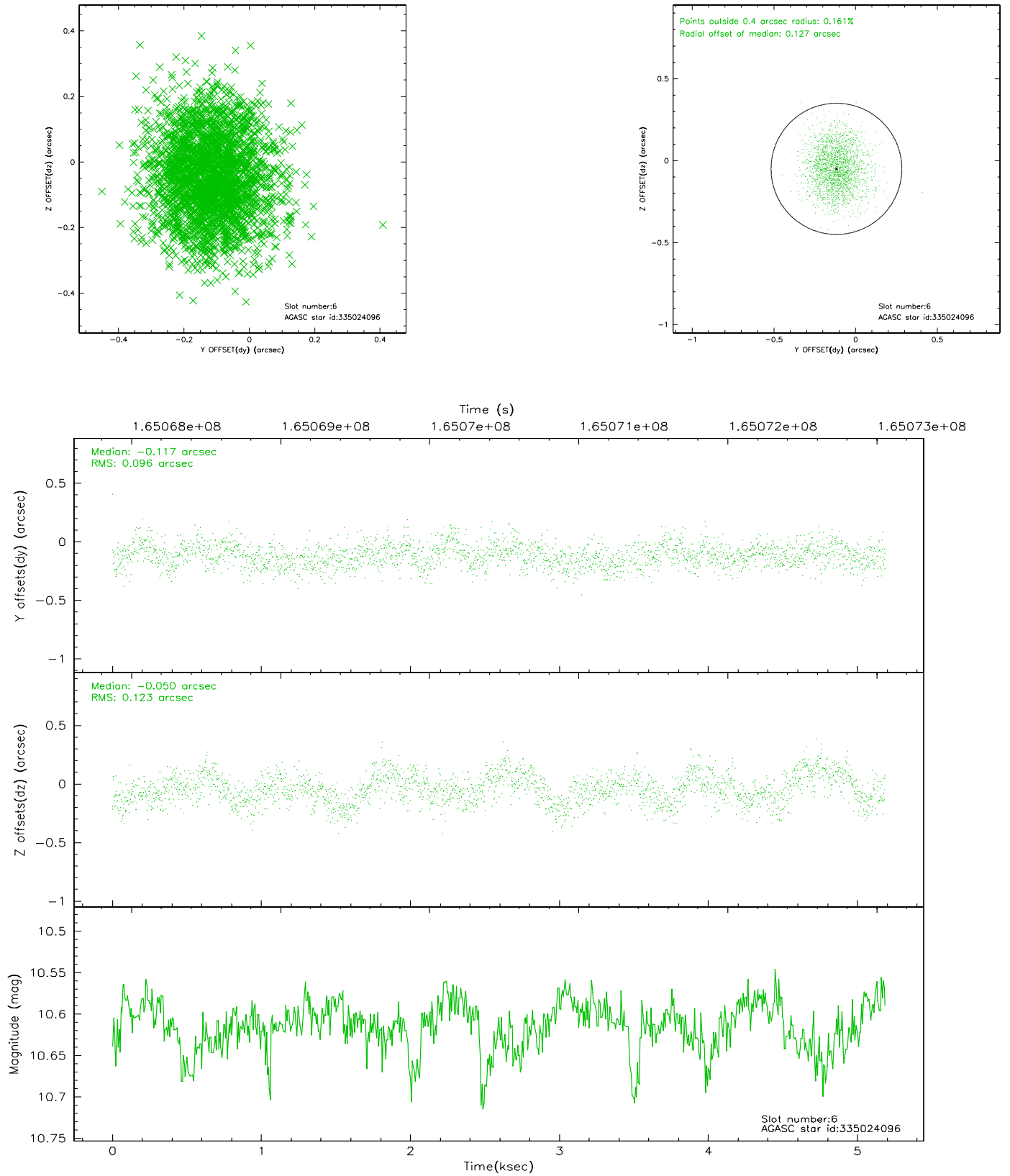
2.4.2 Slot 4



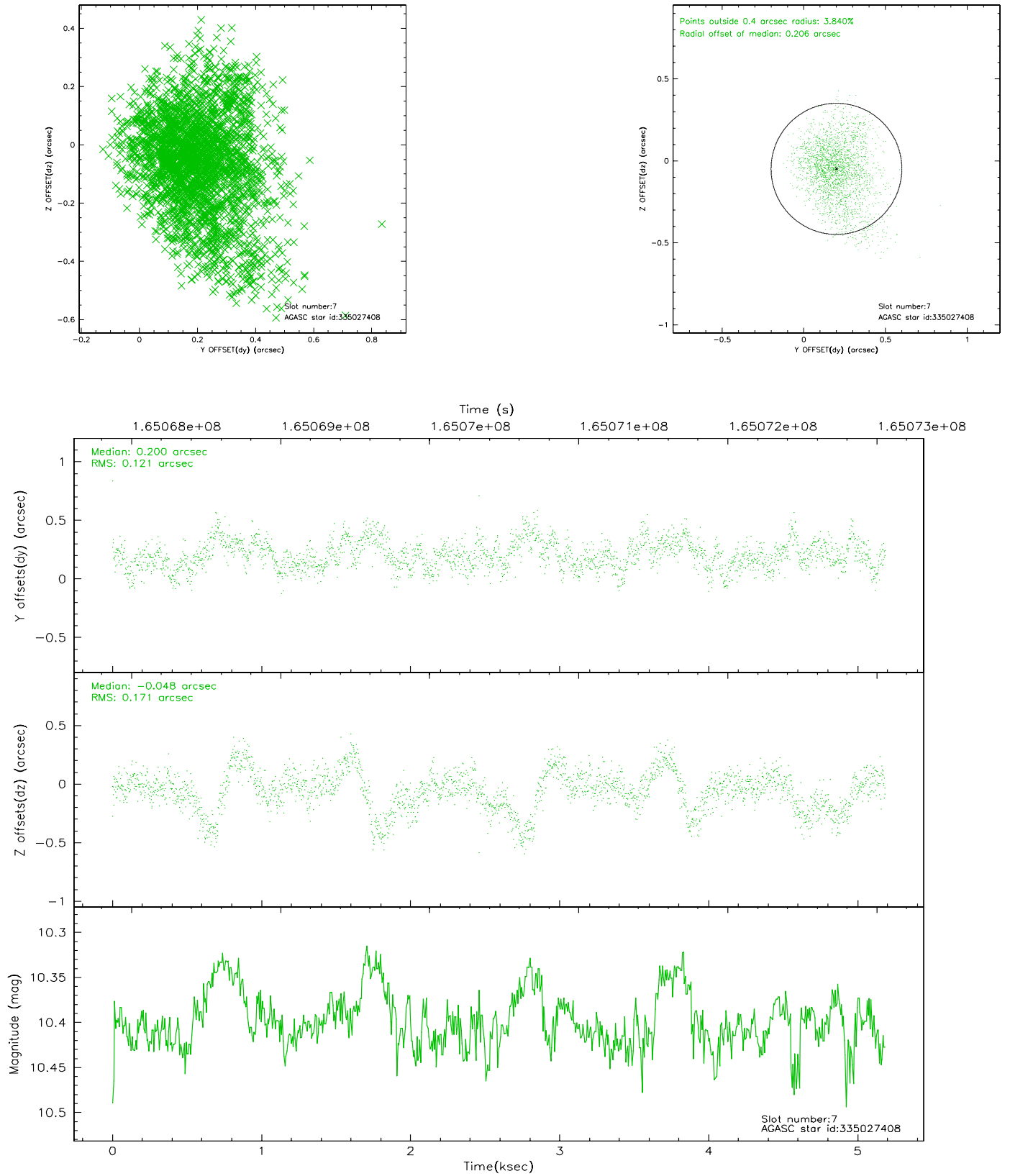
2.4.3 Slot 5



2.4.4 Slot 6

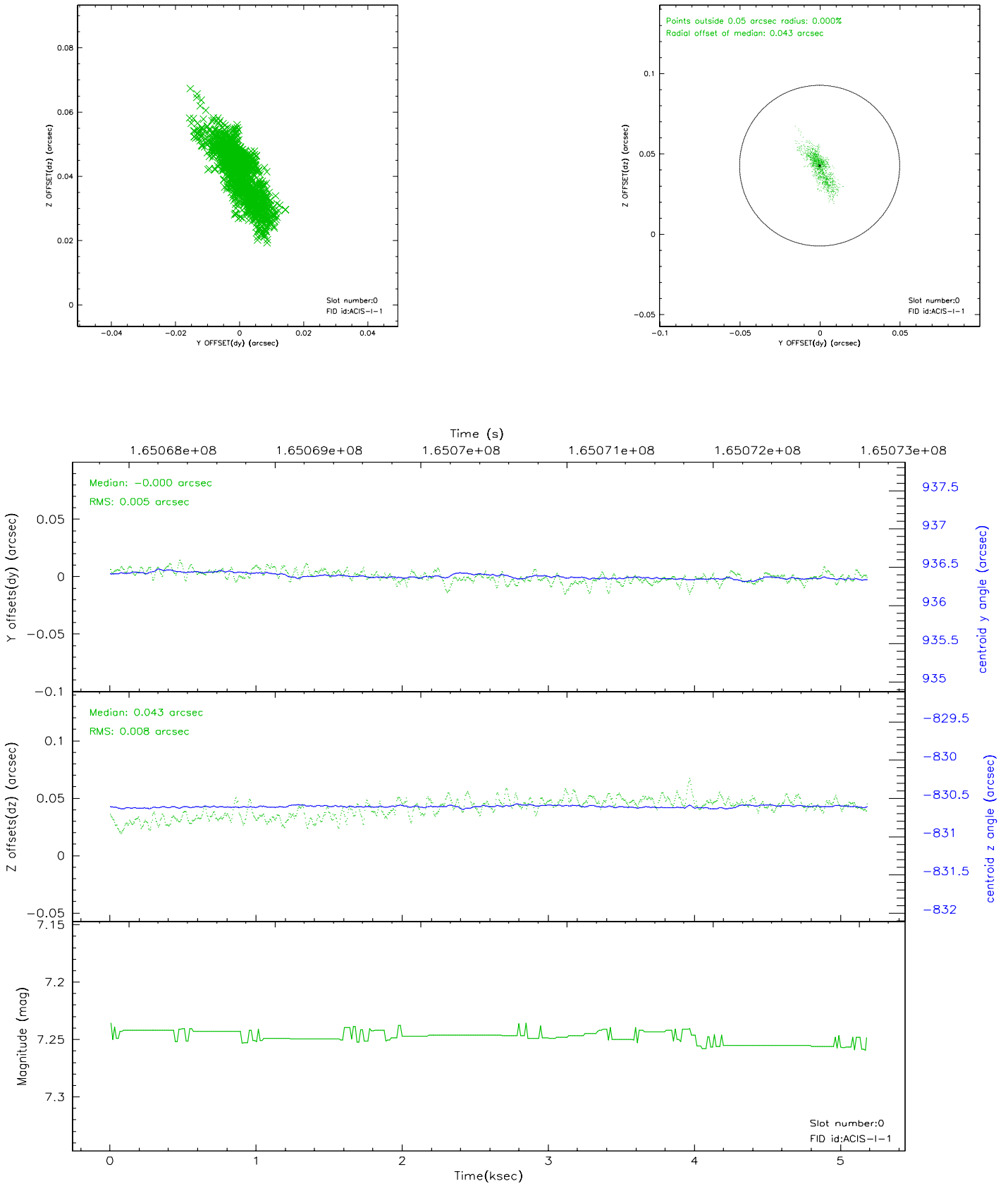


2.4.5 Slot 7

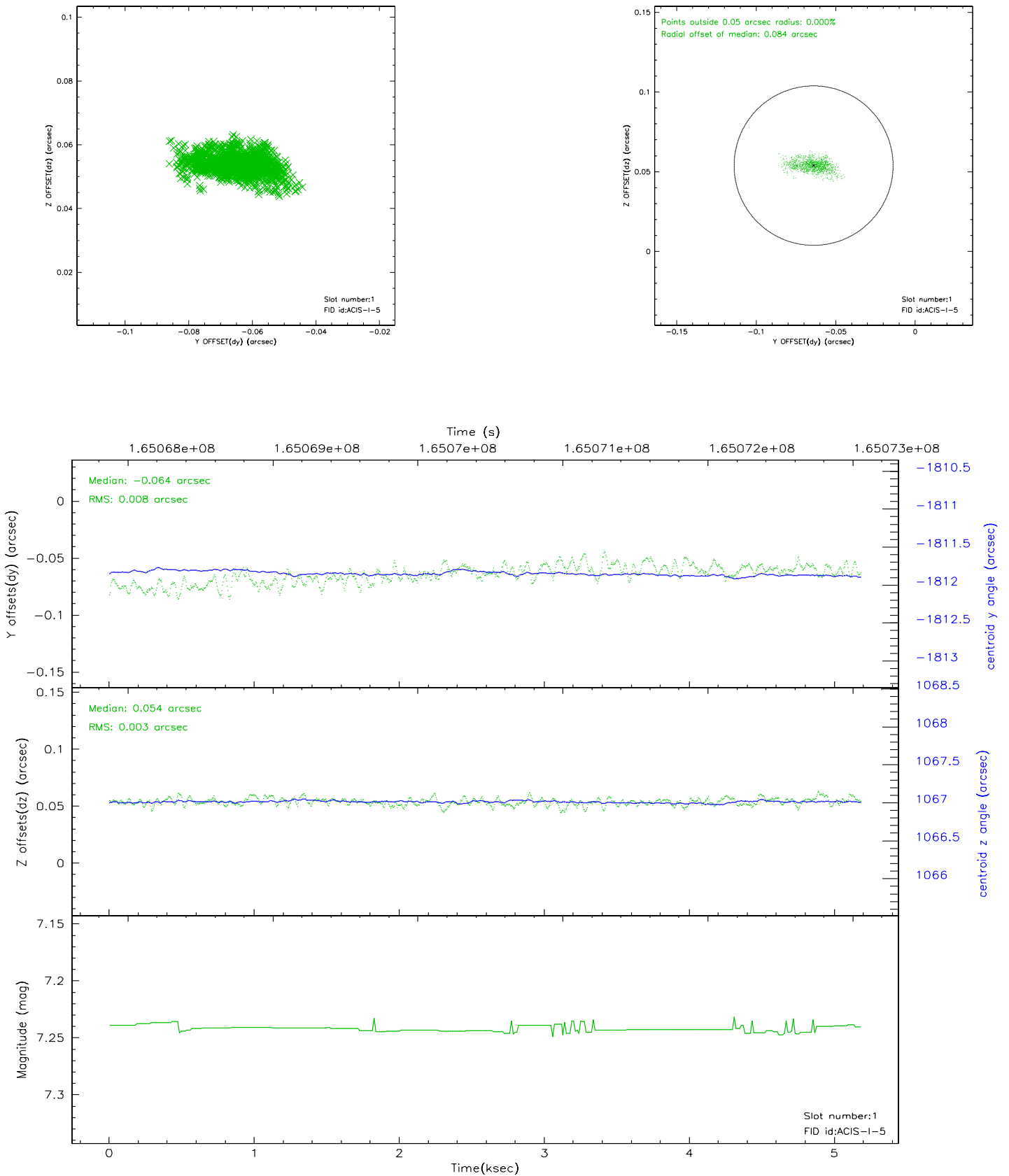


2.5 FID Slots

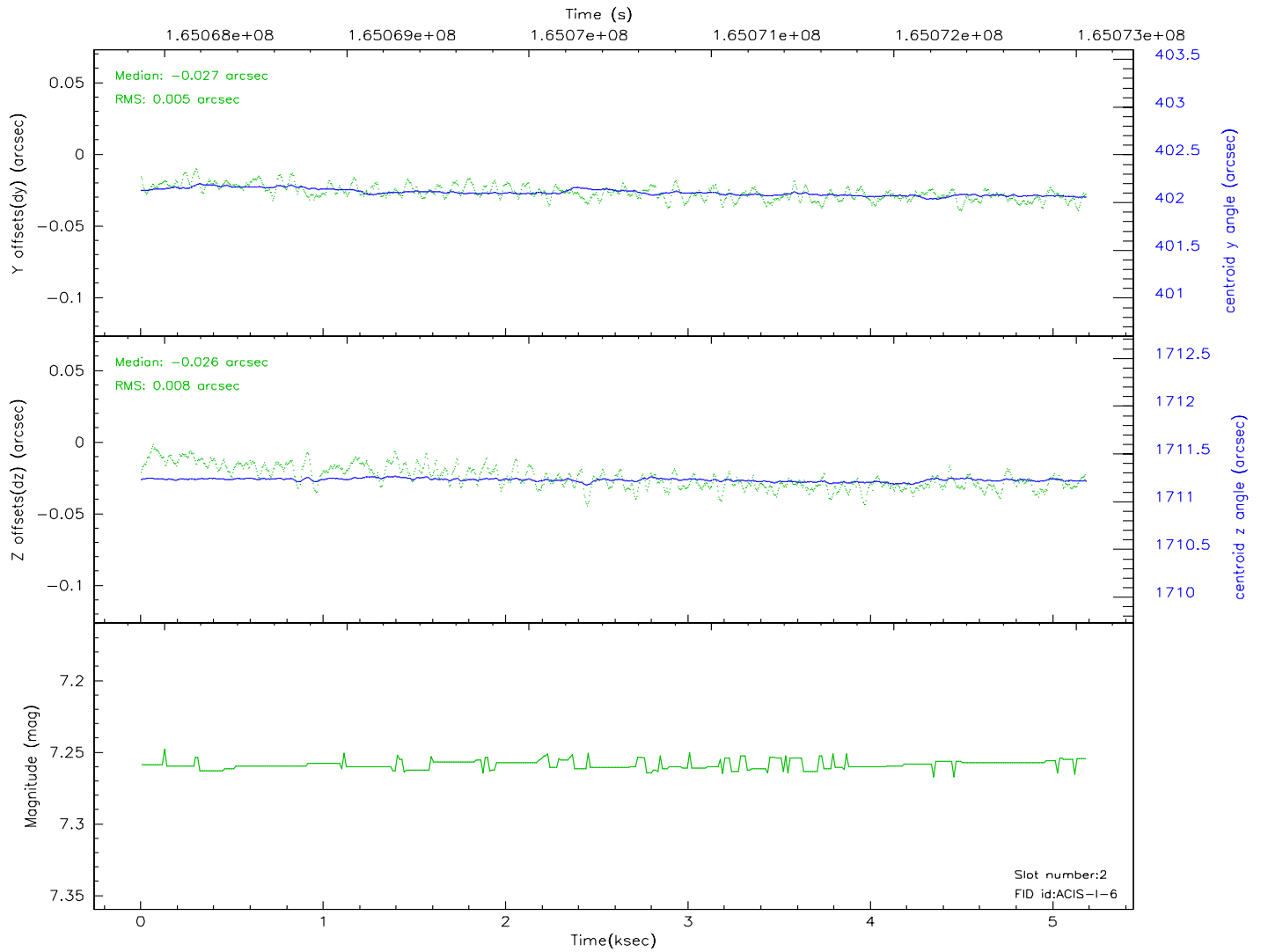
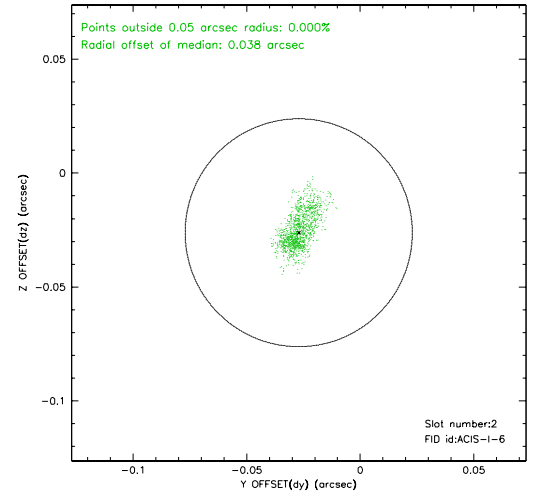
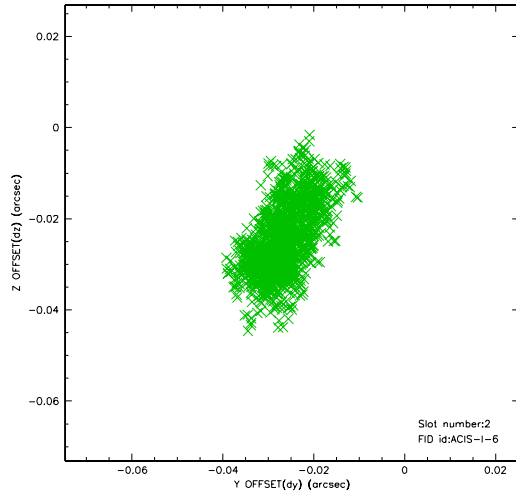
2.5.1 Slot 0



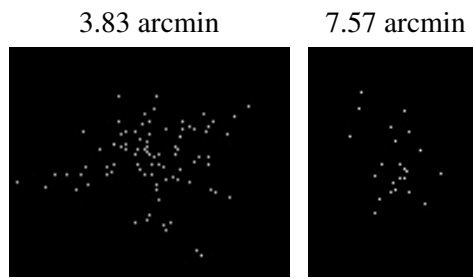
2.5.2 Slot 1



2.5.3 Slot 2



3 Point Sources



A Summary

A.1 Status

V&V Scientist	Beth Sundheim
V&V Date (YYYY-MM-DD)	2006.07.26
V&V Edition	1
V&V Disposition and Status	OK
V&V Charge Time	4.777

A.2 Comments