

# V&V Reference Report

## L2 ASCDS Version : 7.6.8

Observation 4215 - L2 Version 001  
Chandra X-Ray Center

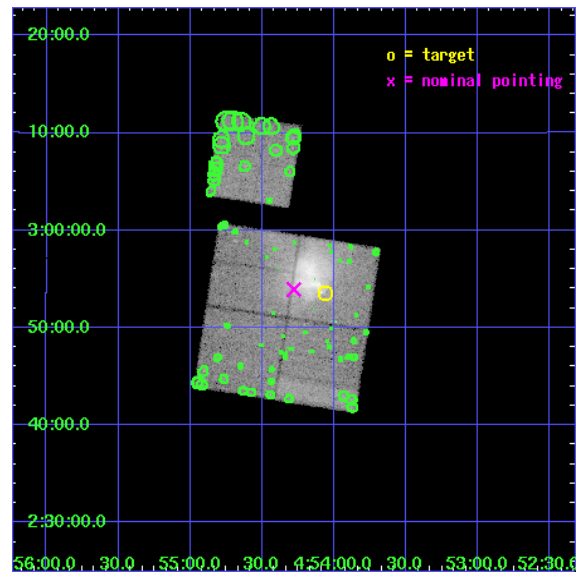
L2 Processing Date : Jun 23 2006

## Contents

<b>1</b>	<b>Front</b>	<b>2</b>
<b>2</b>	<b>OBI</b>	<b>3</b>
2.1	OBI . . . . .	3
2.1.1	Images . . . . .	3
2.1.2	Bias . . . . .	3
2.1.3	Parameters . . . . .	4
2.1.4	Events . . . . .	4
2.2	Compared Parameters . . . . .	5
2.3	Aspect . . . . .	6
2.4	Star Slots . . . . .	9
2.4.1	Slot 3 . . . . .	9
2.4.2	Slot 4 . . . . .	10
2.4.3	Slot 5 . . . . .	11
2.4.4	Slot 6 . . . . .	12
2.4.5	Slot 7 . . . . .	13
2.5	FID Slots . . . . .	14
2.5.1	Slot 0 . . . . .	14
2.5.2	Slot 1 . . . . .	15
2.5.3	Slot 2 . . . . .	16
<b>3</b>	<b>Point Sources</b>	<b>17</b>
<b>A</b>	<b>Summary</b>	<b>18</b>
A.1	Status . . . . .	18
A.2	Comments . . . . .	18

# 1 Front

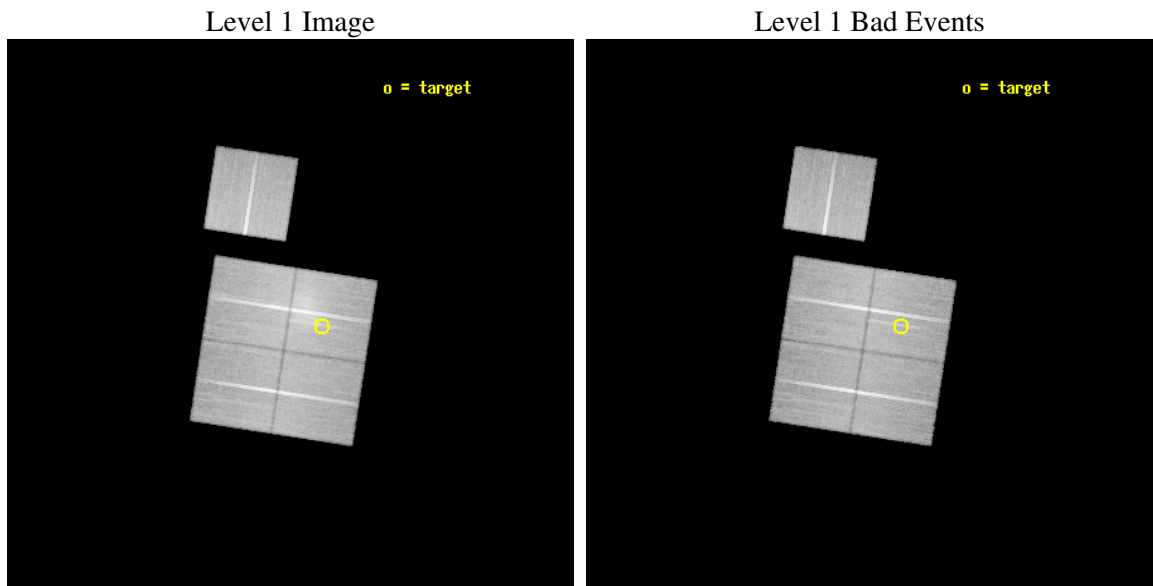
seq_num	800371
obs_id	4215
title	ABELL 520: A LABORATORY EXPERIMENT IN CLUSTER MERGERS
observer	Dr Diab Jerius
object	ABELL 520
dtcycle	0
cycle	P
ra_targ	73.515833
dec_targ	2.8925
ra_nom	73.569819705924
dec_nom	2.8988531634565
roll_nom	8.8196732956925
revision	2
ontime	67152.345797539
livetime	66274.950962856
ontime0	67145.549168408
ontime1	67145.54914856
ontime2	67148.690158784
ontime3	67152.345797539
ontime6	67154.972029269
l2events	216685



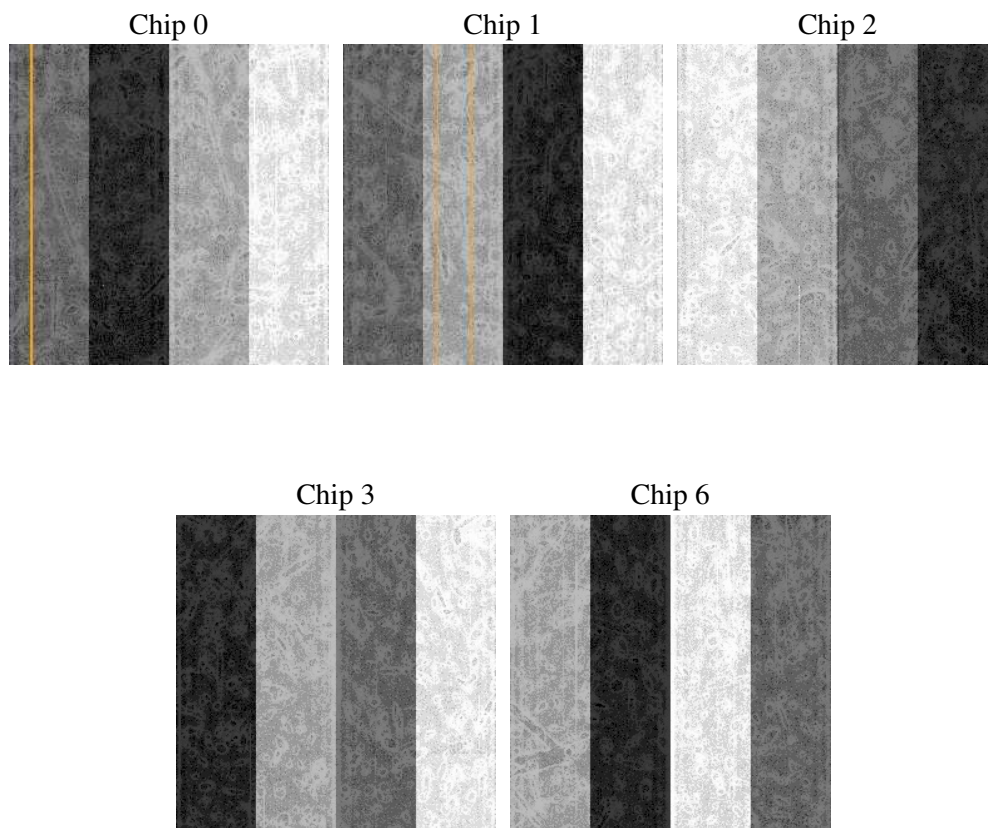
## 2 OBI

### 2.1 OBI

#### 2.1.1 Images



#### 2.1.2 Bias



### 2.1.3 Parameters

obi_num	1
ascdsver	7.6.8
caldbver	3.2.2
date	2006-06-23T12:59:30
revision	2

sched_exp_time	67000.000000
ontime	67610.253762931
ontime0	67613.394902587
ontime1	67622.817643821
ontime2	67597.689792424
ontime3	67610.253762931
ontime6	67613.394413948
l1events	1791785

### 2.1.4 Events

	ccd 0	ccd 1	ccd 2	ccd 3	ccd 6
level 1 events	320314	328817	376170	407783	358701
rejected events	282064	287177	327057	318334	319278
rejected %	88%	87%	86%	78%	89%

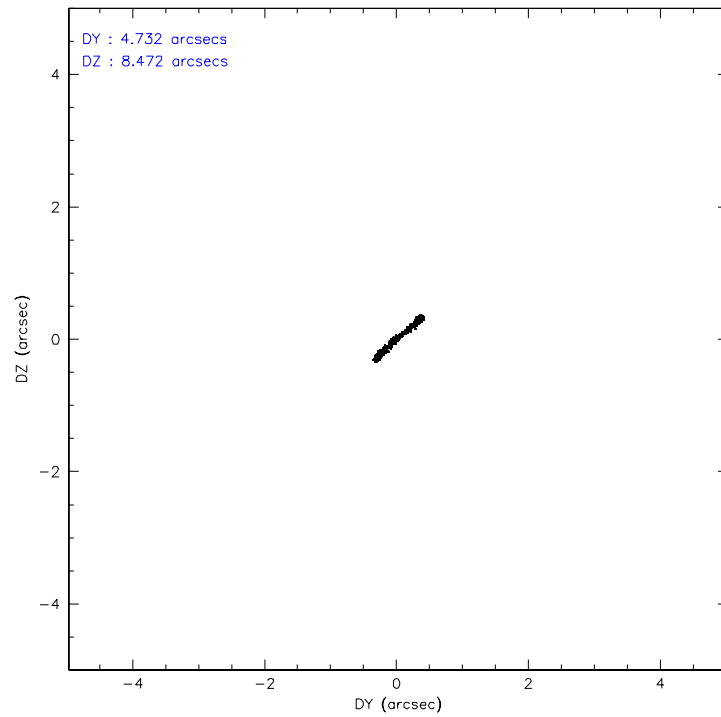
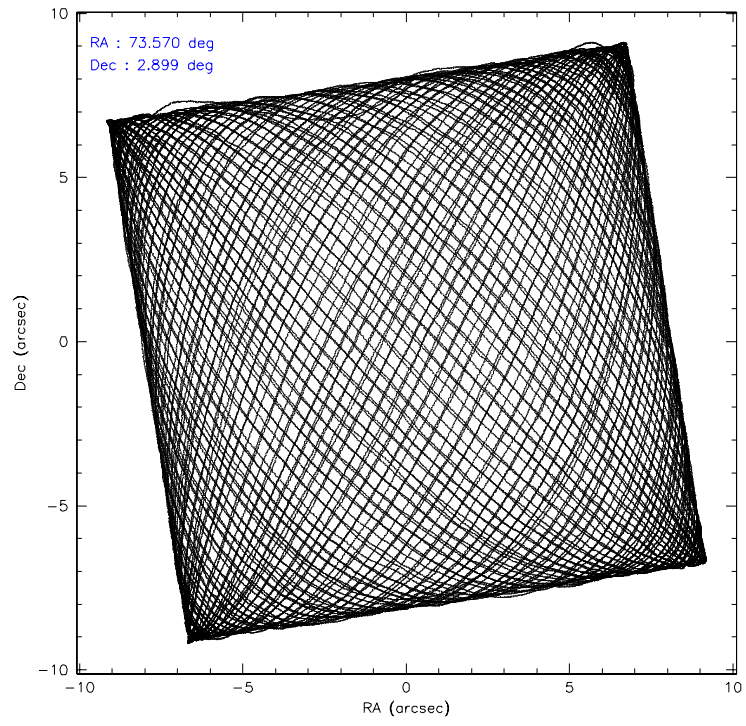
	ccd 0	ccd 1	ccd 2	ccd 3	ccd 6
grade 0 events	21938	23325	30686	65655	22388
	6%	7%	8%	16%	6%
grade 1 events	199	198	286	409	211
	0%	0%	0%	0%	0%
grade 2 events	10972	11140	12038	14514	10346
	3%	3%	3%	3%	2%
grade 3 events	4666	4978	4578	6207	4554
	1%	1%	1%	1%	1%
grade 4 events	4411	4821	5311	5943	4556
	1%	1%	1%	1%	1%
grade 5 events	11623	12395	11022	13078	12876
	3%	3%	2%	3%	3%
grade 6 events	8173	9623	8055	9151	8805
	2%	2%	2%	2%	2%
grade 7 events	258332	262337	304194	292826	294965
	80%	79%	80%	71%	82%

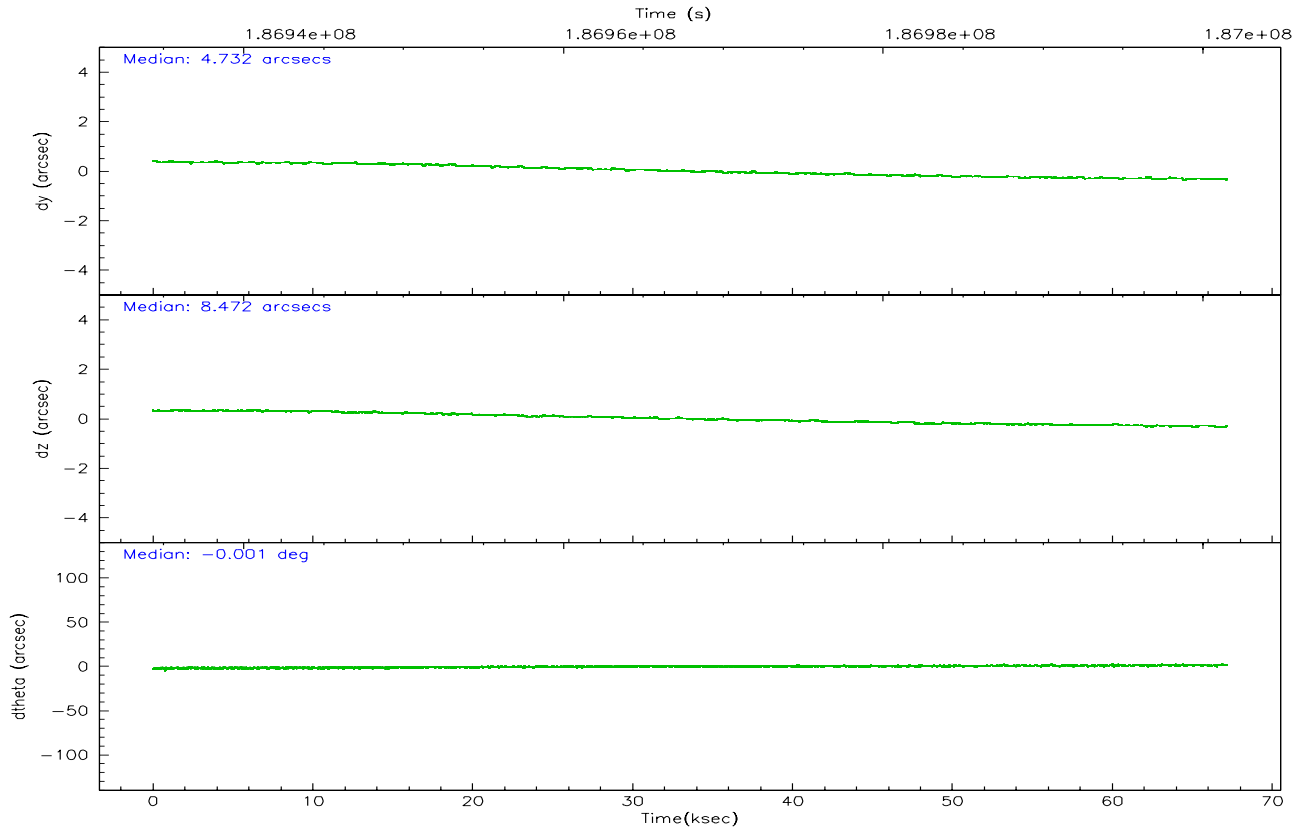
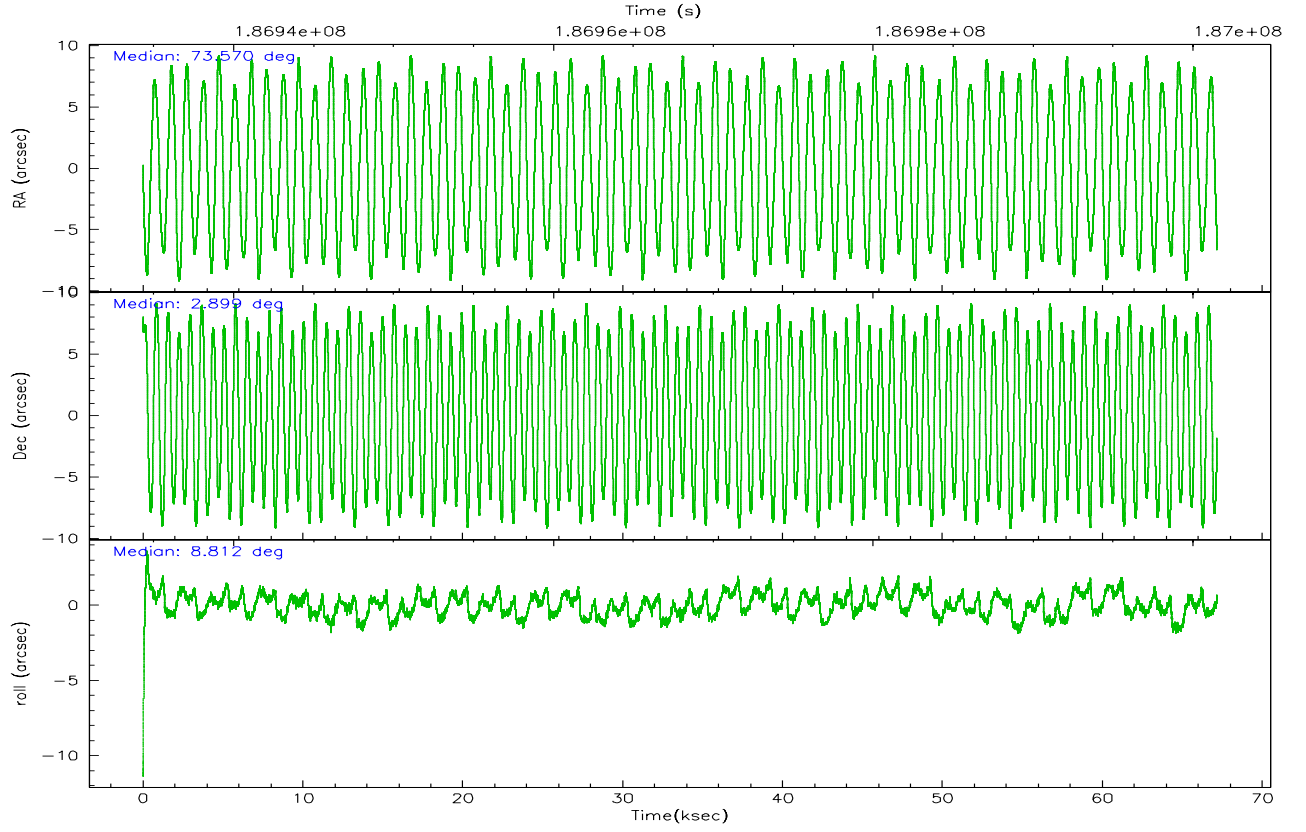


## 2.2 Compared Parameters

Parameter	Planned	Actual	Parameter	Planned	Actual
Instrument	ACIS	ACIS	Obspar format version number	6	6
Detector	ACIS-01236	ACIS-01236	Obspar file type	PREDICTED	ACTUAL
Grating	NONE	NONE	Obspar update status	NONE	UPDATED
Data mode	VFAINT	VFAINT	On-chip summing requested	N	N
Observation mode	POINTING	POINTING	Subarray requested	NONE	NONE
Pointing RA	73.548546	73.56981970592405	Alternating exposures requested	N	N
Pointing Dec	2.881605	2.89885316345651	Primary exposure time	0.000000	3.1
Pointing Roll	8.612059	8.819673295692464			
SIM focus pos (mm)	-0.782348	-0.7809083437167272			
SIM defocus (mm)	0	0.001439871863259334			
SIM translation stage pos (mm)	-226.592463	-226.5875806612856			
SIM translation stage offset (mm)	-7	-7.004872341644045			
Observation start time	186934522.184000	186932981.89503			
Observation start date	2003-12-04T14:14:18	2003-12-04T13:49:41			
Observation end time	187001522.184000	187001963.37302			
Observation end date	2003-12-05T08:50:58	2003-12-05T08:59:23			
Read mode	TIMED	TIMED			

## 2.3 Aspect



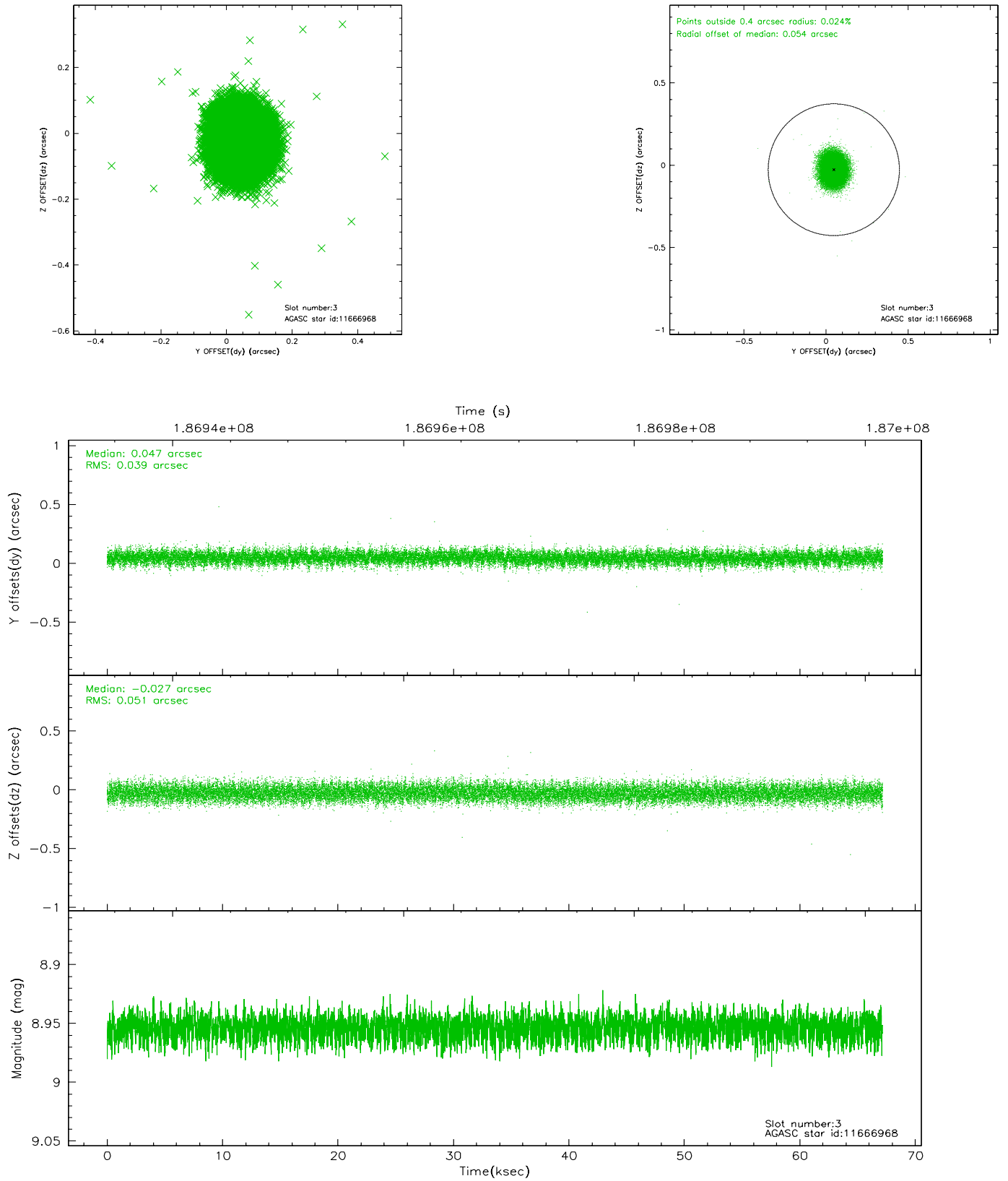


### Slot Statistics

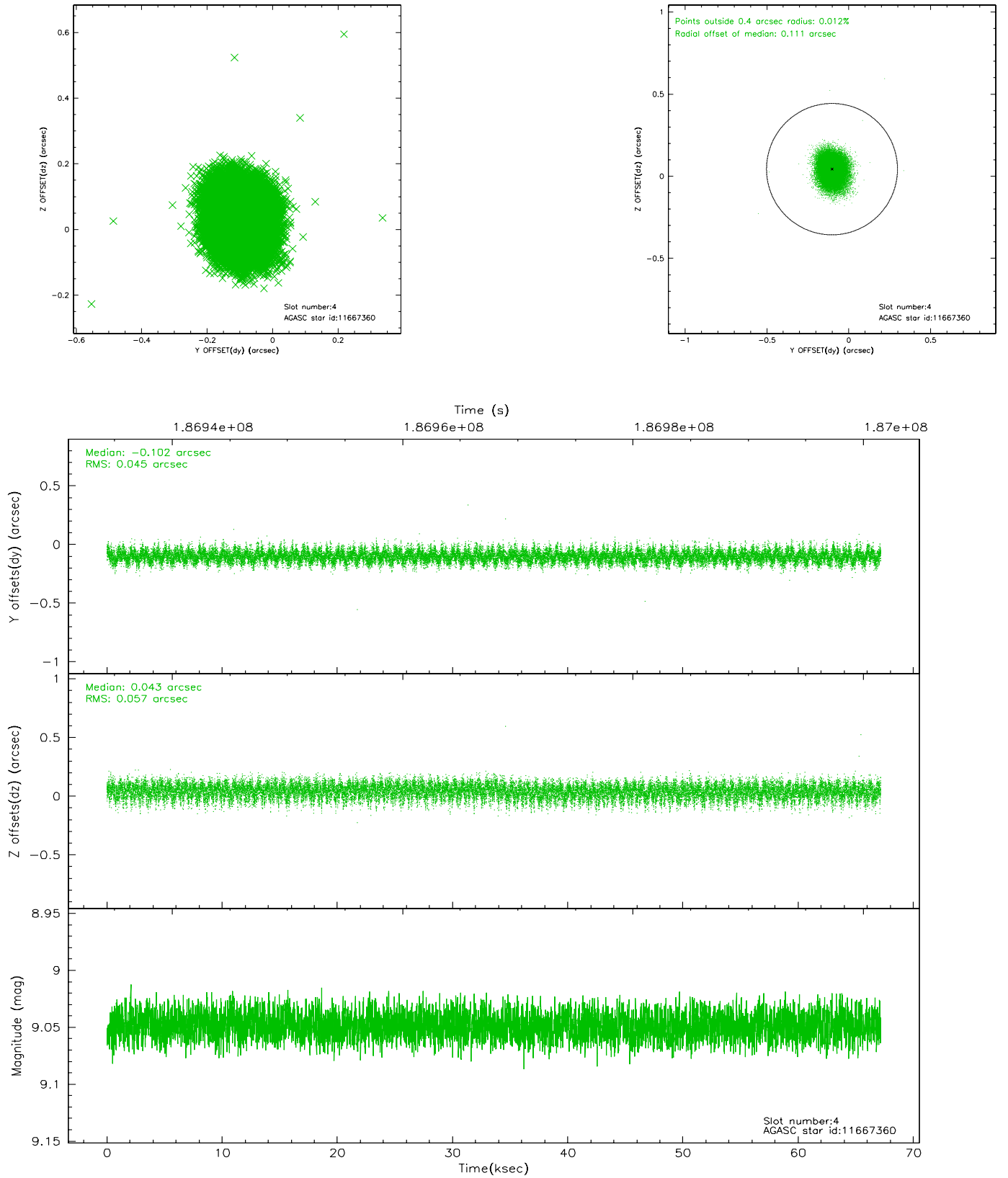
slot	status	id	mag	n_pts	med_dy	med_dz	dr1	dr2	ra	dec	mean_y	mean_z
0	FID	ACIS-I-1	7.23	16383	0.083	-0.018	0.018	0.025	0.000000	0.000000	934.93	-975.74
1	FID	ACIS-I-5	7.22	16386	-0.226	0.088	0.011	0.017	0.000000	0.000000	-1813.49	921.91
2	FID	ACIS-I-6	7.25	16387	0.051	0.003	0.011	0.016	0.000000	0.000000	400.53	1566.24
3	GUIDE	11666968	8.95	32766	0.047	-0.027	0.068	0.109	73.353686	2.574659	-857.81	-987.54
4	GUIDE	11667360	9.05	32767	-0.102	0.043	0.077	0.126	73.657776	2.357171	106.24	-1925.33
5	GUIDE	11669928	8.94	32765	0.017	-0.075	0.079	0.128	73.336883	3.436182	-453.01	2087.91
6	GUIDE	11671056	8.77	32766	0.099	-0.039	0.073	0.116	73.483760	3.096575	-114.04	800.22
7	GUIDE	11676640	7.64	32770	-0.061	0.100	0.052	0.086	74.238422	2.780087	2398.48	-731.63

## 2.4 Star Slots

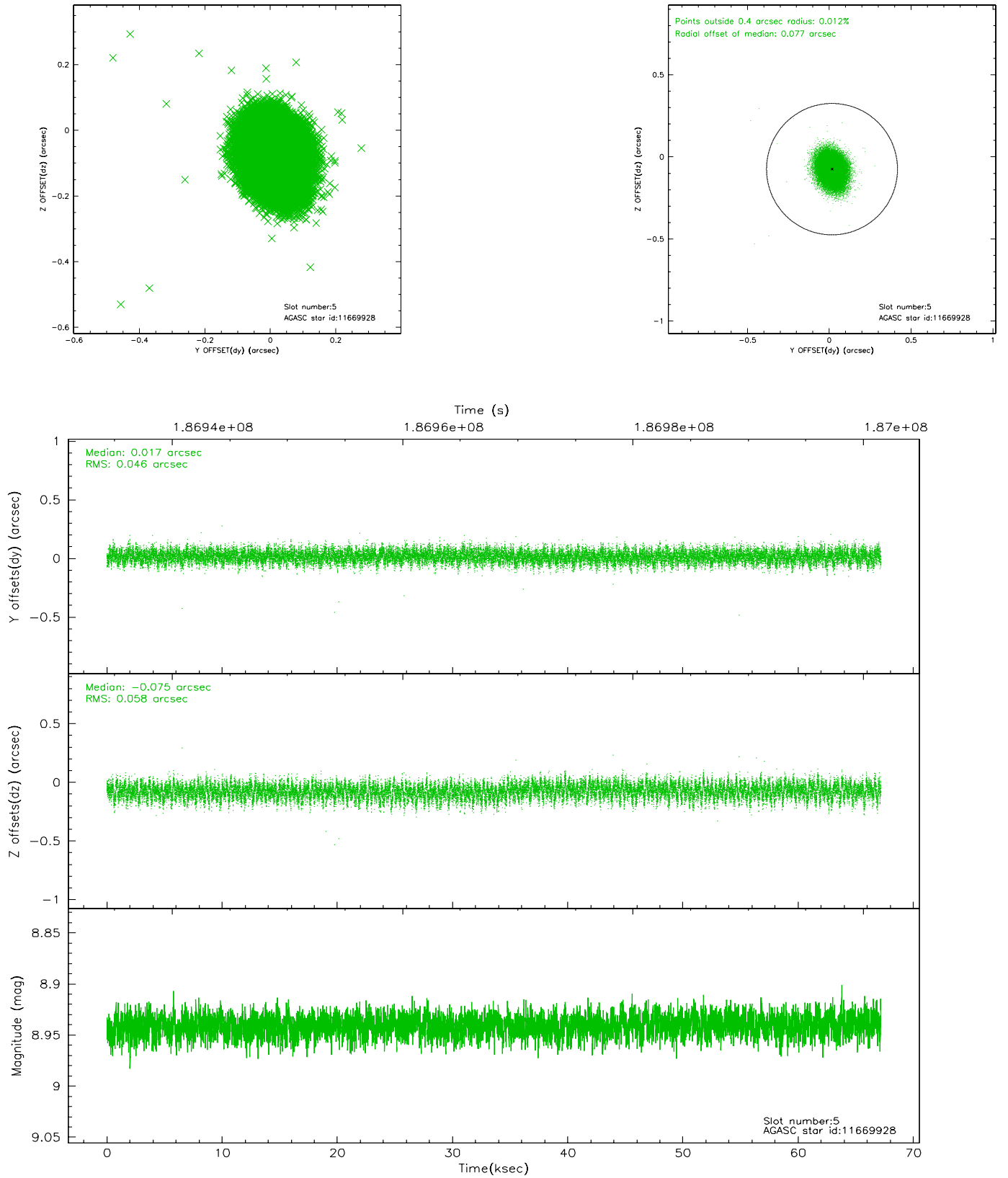
### 2.4.1 Slot 3



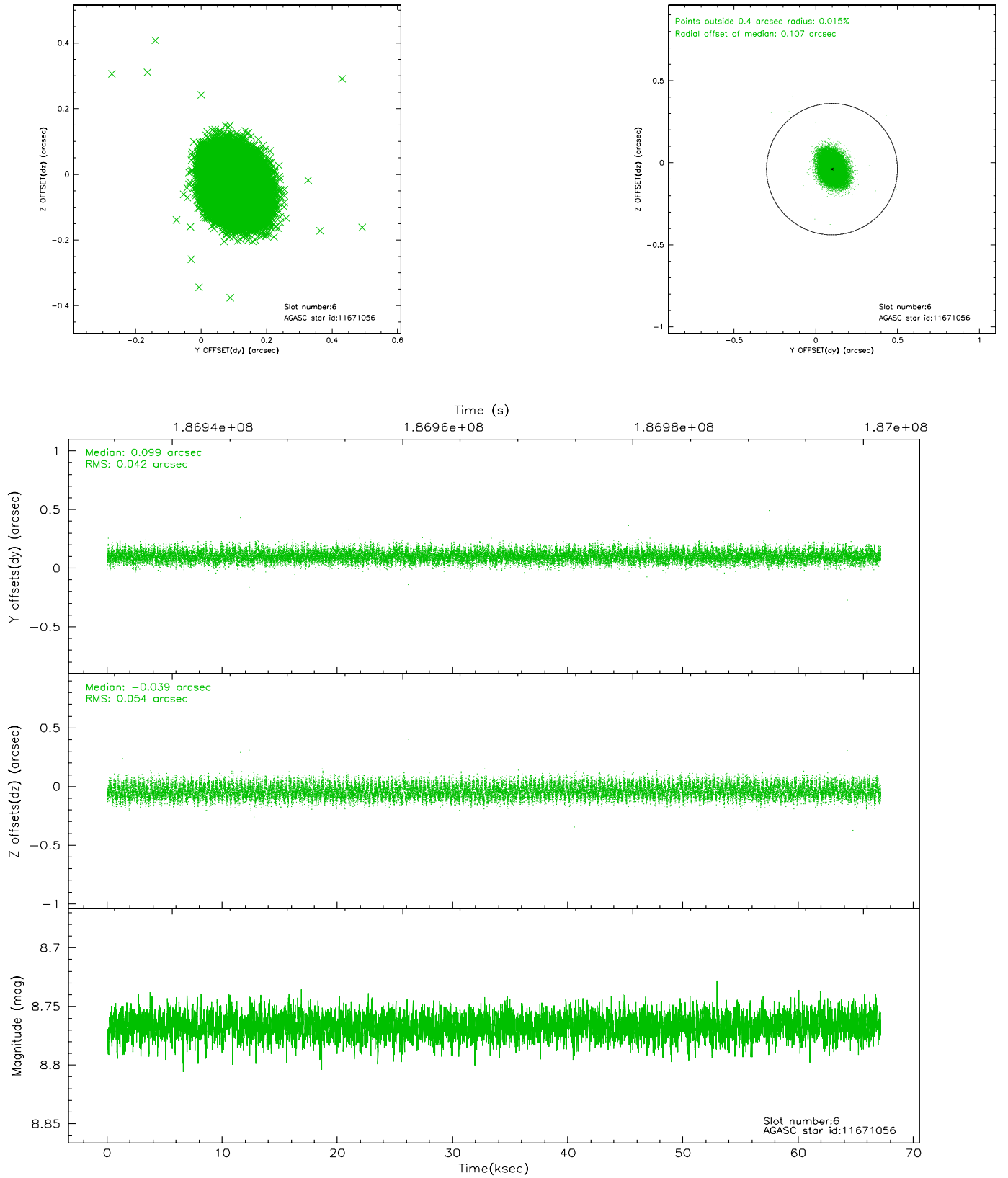
## 2.4.2 Slot 4



### 2.4.3 Slot 5

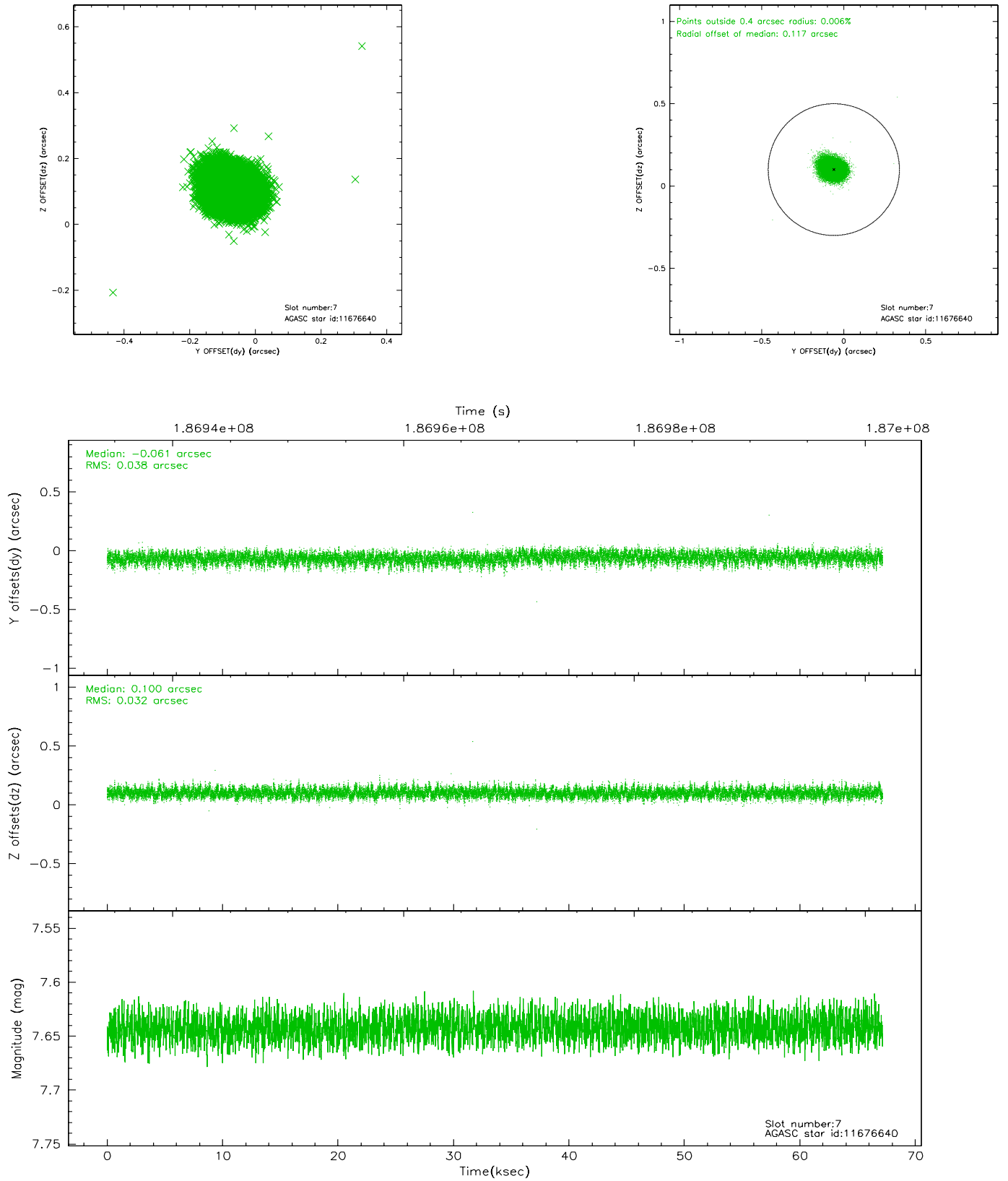


## 2.4.4 Slot 6



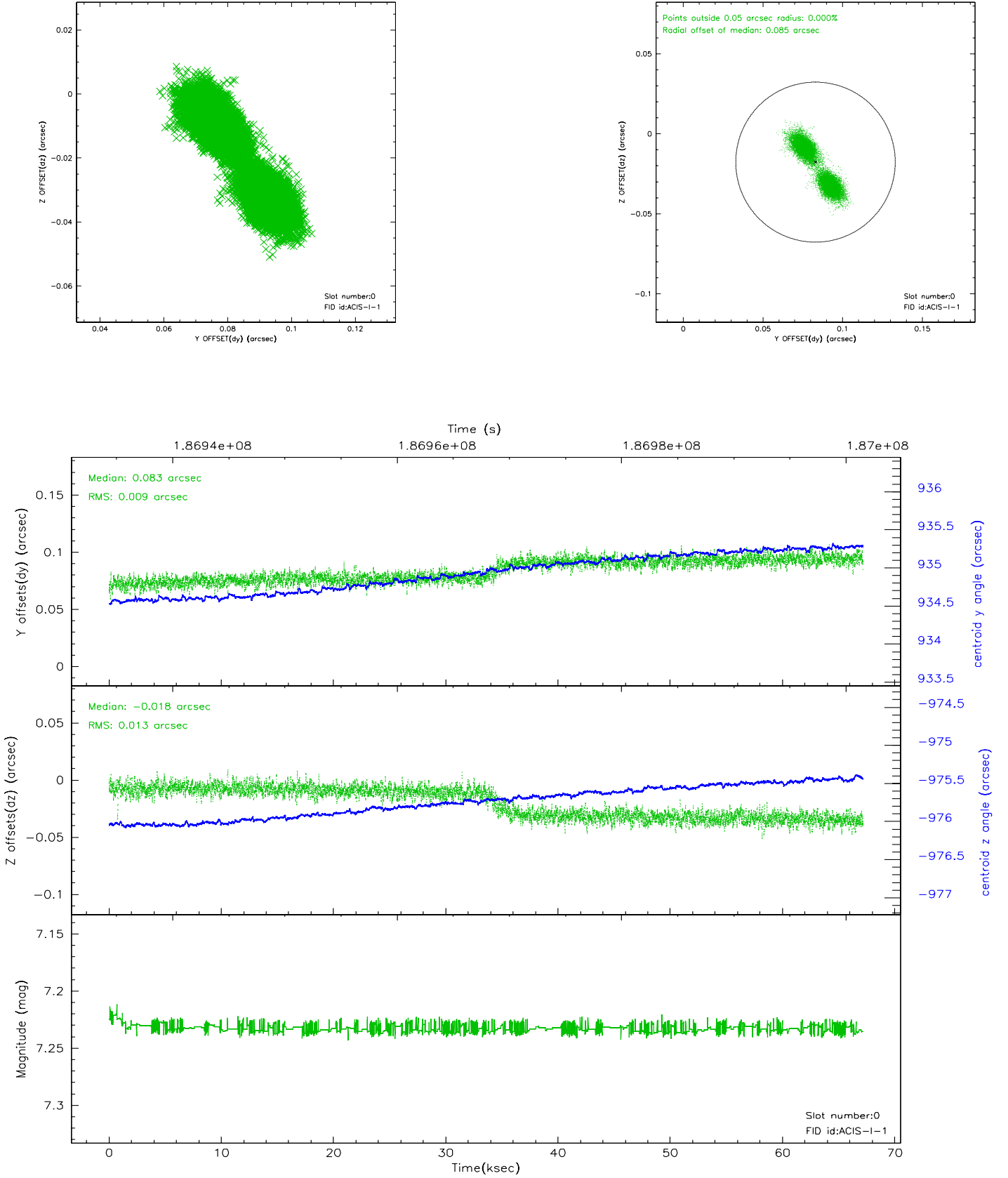


## 2.4.5 Slot 7

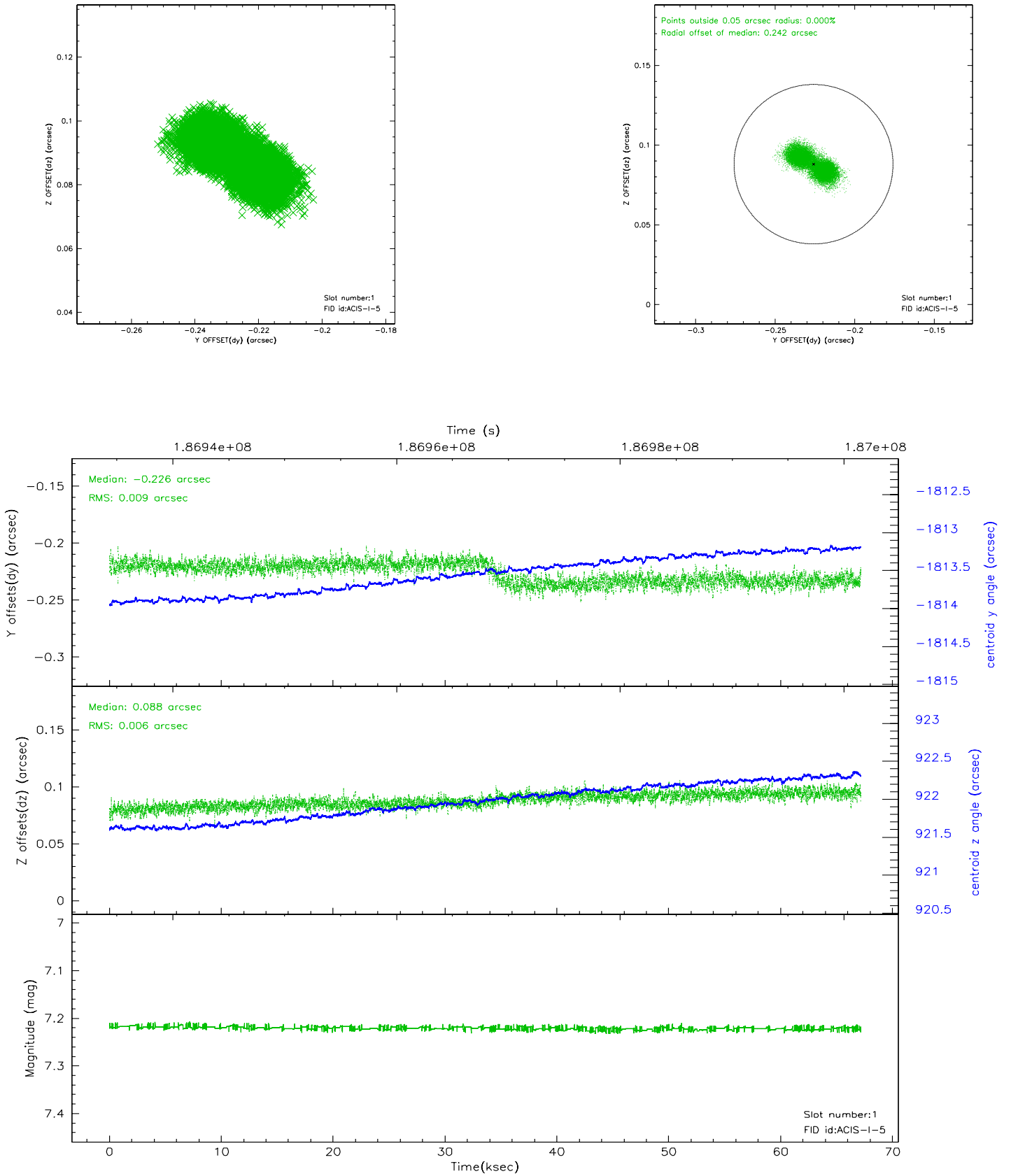


## 2.5 FID Slots

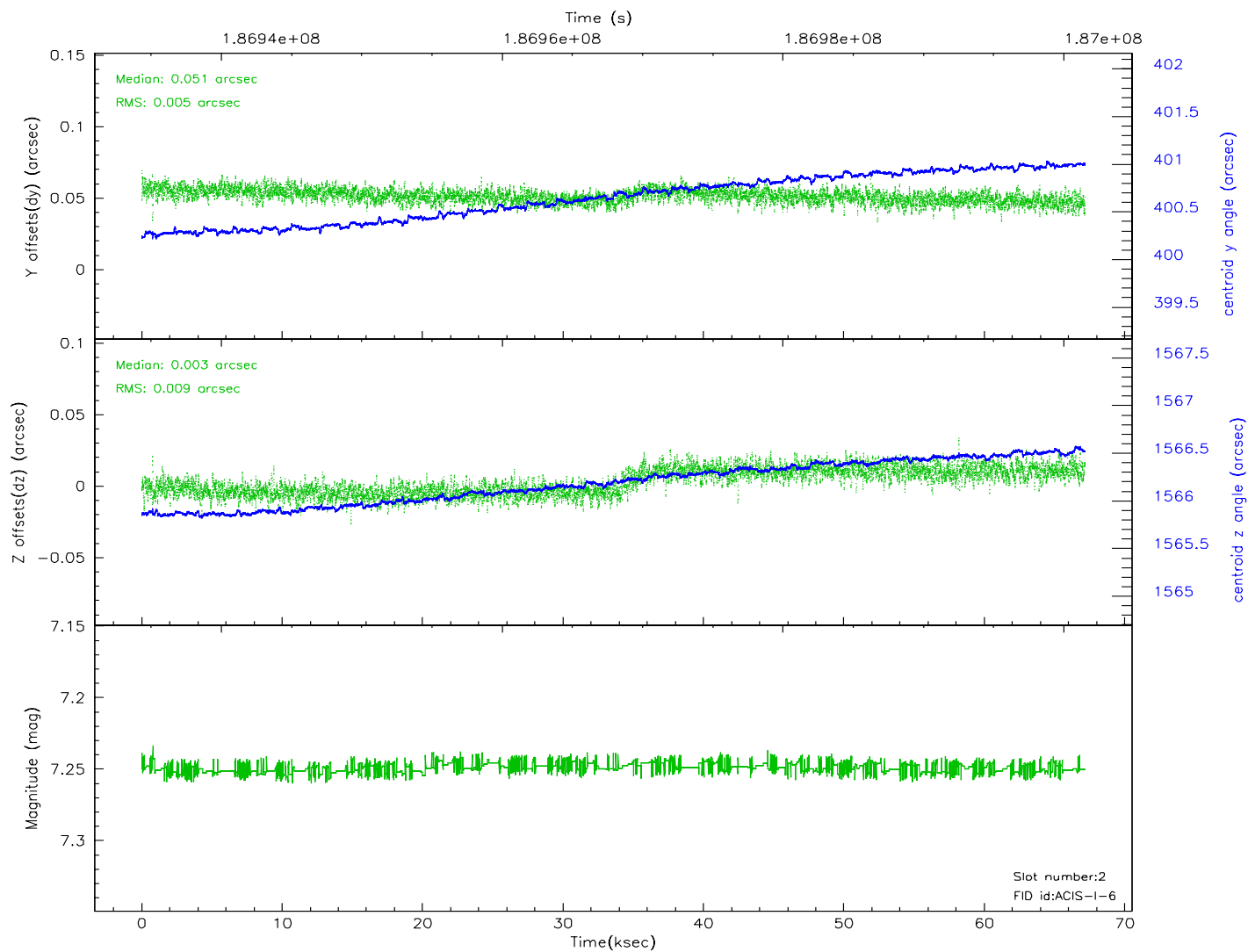
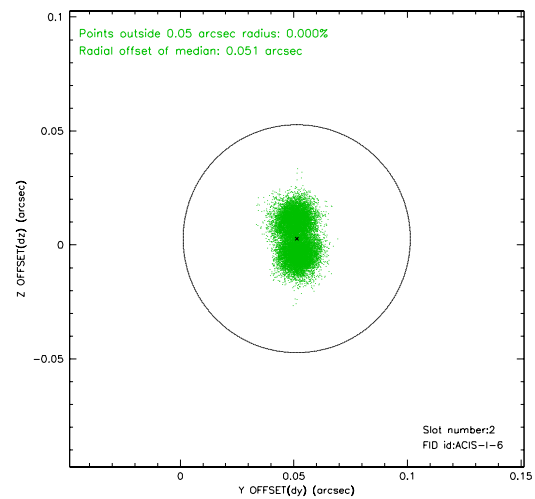
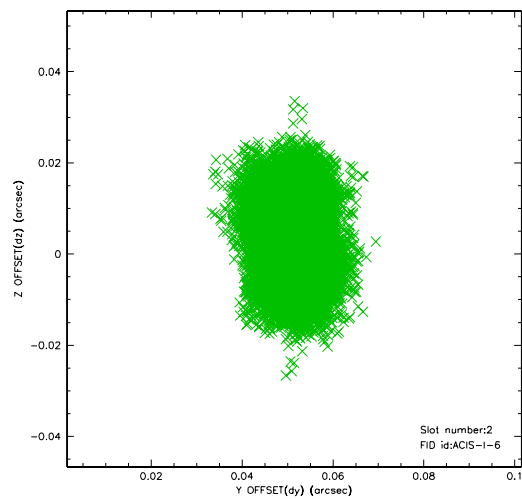
### 2.5.1 Slot 0



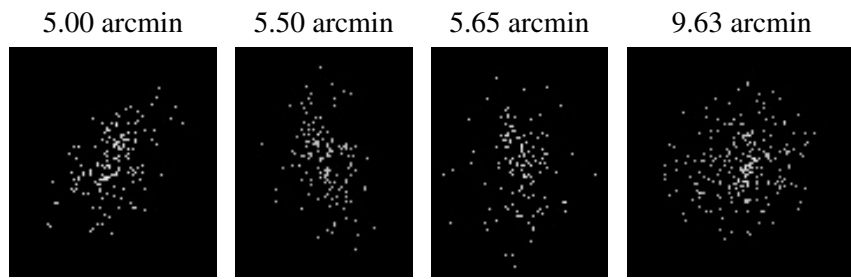
## 2.5.2 Slot 1



### 2.5.3 Slot 2



### 3 Point Sources



## A Summary

### A.1 Status

V&V Scientist	Jen Lauer
V&V Date (YYYY-MM-DD)	2006.06.23
V&V Edition	1
V&V Disposition and Status	OK
V&V Charge Time	67.152

### A.2 Comments