

# V&V Reference Report

## L2 ASCDS Version : 7.6.8

Observation 4195 - L2 Version 001  
Chandra X-Ray Center

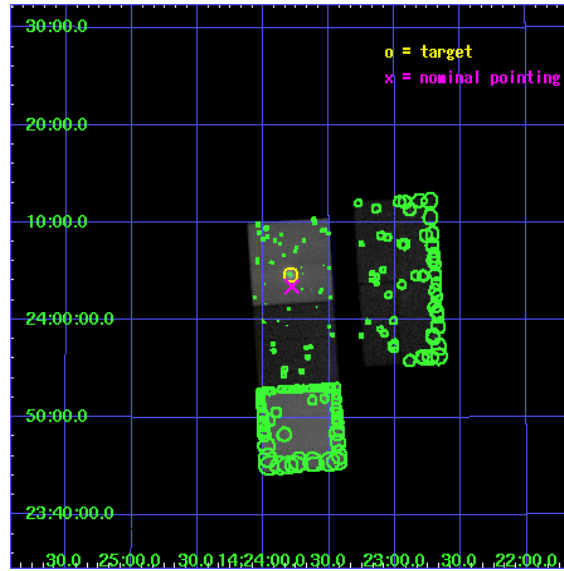
L2 Processing Date : Jul 11 2006

## Contents

<b>1</b>	<b>Front</b>	<b>2</b>
<b>2</b>	<b>OBI</b>	<b>3</b>
2.1	OBI . . . . .	3
2.1.1	Images . . . . .	3
2.1.2	Bias . . . . .	3
2.1.3	Parameters . . . . .	4
2.1.4	Events . . . . .	4
2.2	Compared Parameters . . . . .	5
2.3	Aspect . . . . .	6
2.4	Star Slots . . . . .	9
2.4.1	Slot 3 . . . . .	9
2.4.2	Slot 4 . . . . .	10
2.4.3	Slot 5 . . . . .	11
2.4.4	Slot 6 . . . . .	12
2.4.5	Slot 7 . . . . .	13
2.5	FID Slots . . . . .	14
2.5.1	Slot 0 . . . . .	14
2.5.2	Slot 1 . . . . .	15
2.5.3	Slot 2 . . . . .	16
<b>3</b>	<b>Point Sources</b>	<b>17</b>
<b>A</b>	<b>Summary</b>	<b>18</b>
A.1	Status . . . . .	18
A.2	Comments . . . . .	18

# 1 Front

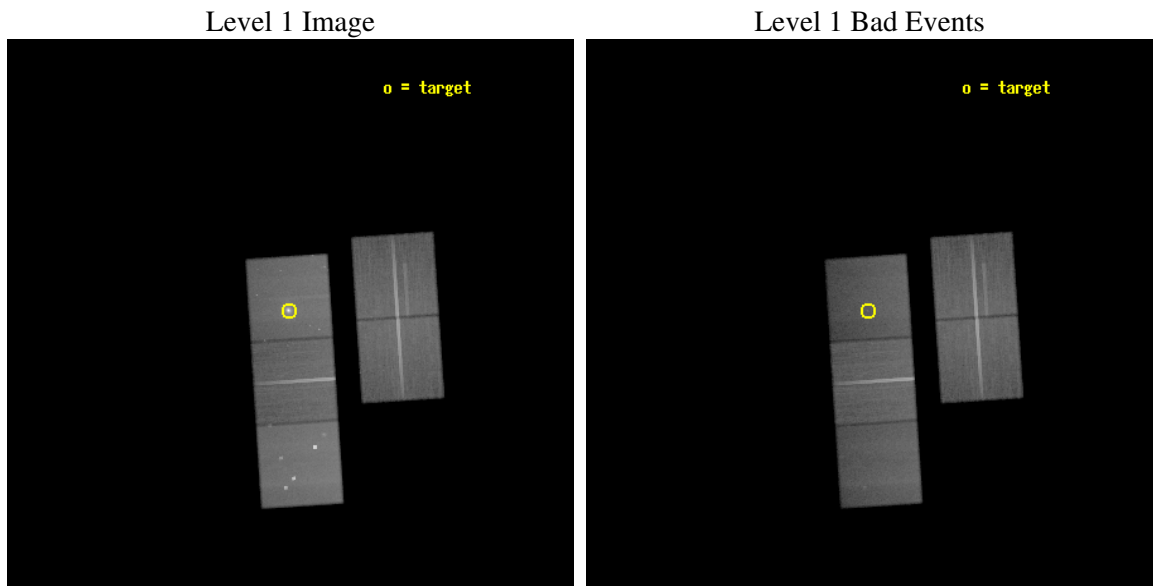
seq_num	800351
obs_id	4195
title	COSMOLOGICAL CONSTRAINTS FROM THE X-RAY GAS MASS FRACTION IN THE MOST LUMINOUS, RELAXED CLUSTERS
observer	Dr Steven Allen
object	MACS1423.8+2404
dtcycle	0
cycle	P
ra_targ	215.949167
dec_targ	24.078167
ra_nom	215.94579419569
dec_nom	24.057658777781
roll_nom	266.23888599173
revision	2
ontime	117102.49977484
livetime	115572.46940568
ontime2	117089.93590388
ontime3	117089.93595377
ontime5	117102.49977484
ontime6	117093.07686421
ontime7	117102.49977484
l2events	825338



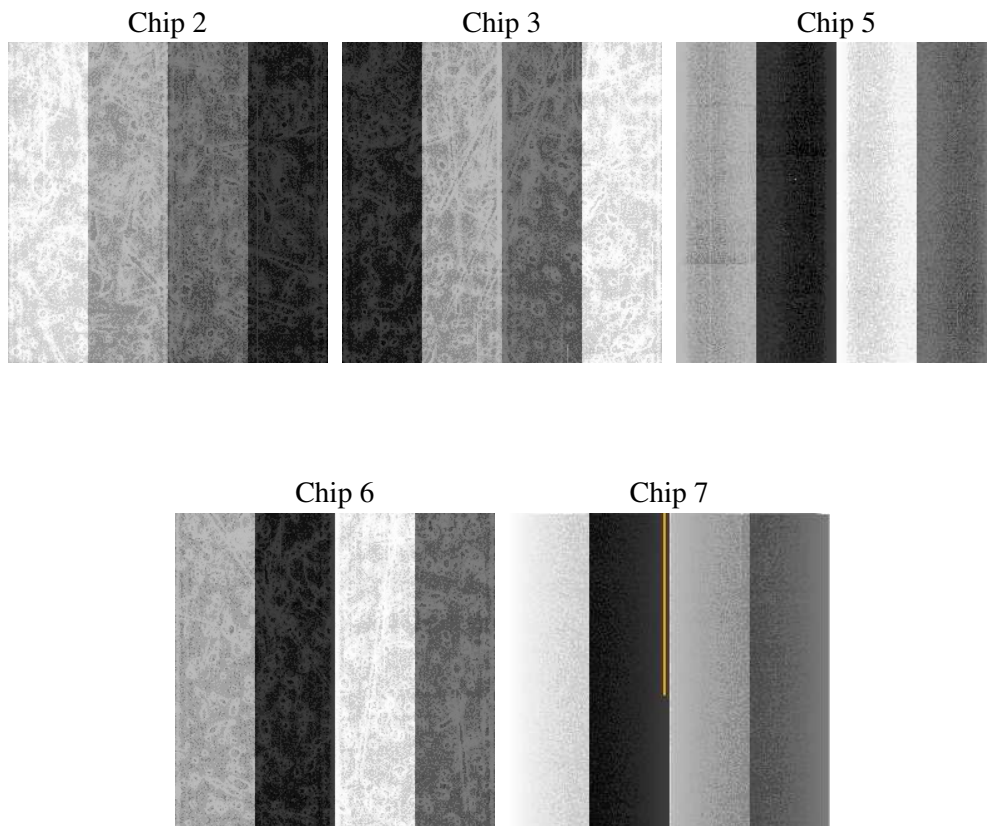
## 2 OBI

### 2.1 OBI

#### 2.1.1 Images



#### 2.1.2 Bias



### 2.1.3 Parameters

obi_num	0
ascdsver	7.6.8
caldbver	3.2.2
date	2006-07-11T12:55:56
revision	2

sched_exp_time	117000.000000
ontime	117109.08926976
ontime2	117096.5253689
ontime3	117096.52541879
ontime5	117109.08923987
ontime6	117099.66632923
ontime7	117109.08926976
llevents	3343385

### 2.1.4 Events

	ccd 2	ccd 3	ccd 5	ccd 6	ccd 7
level 1 events	613976	589656	824537	606788	708428
rejected events	554846	533229	417316	544113	384432
rejected %	90%	90%	50%	89%	54%

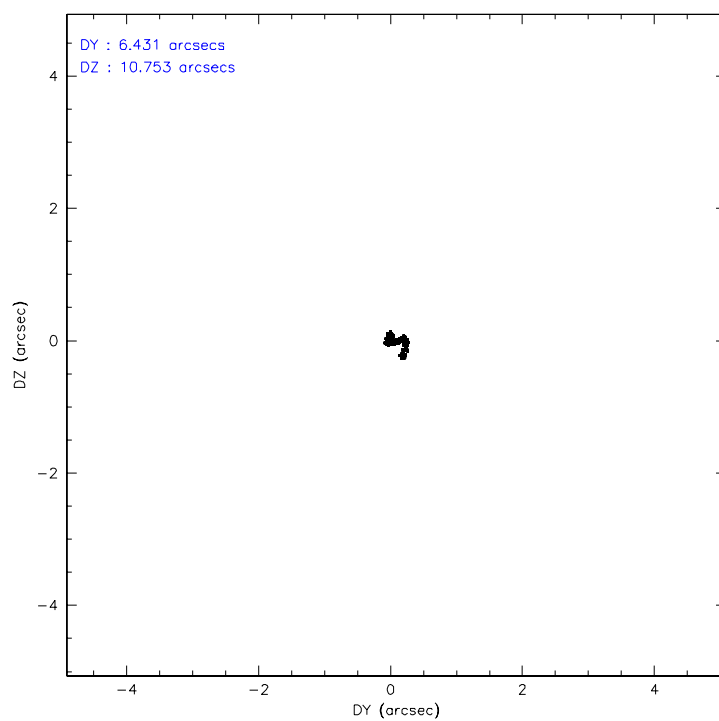
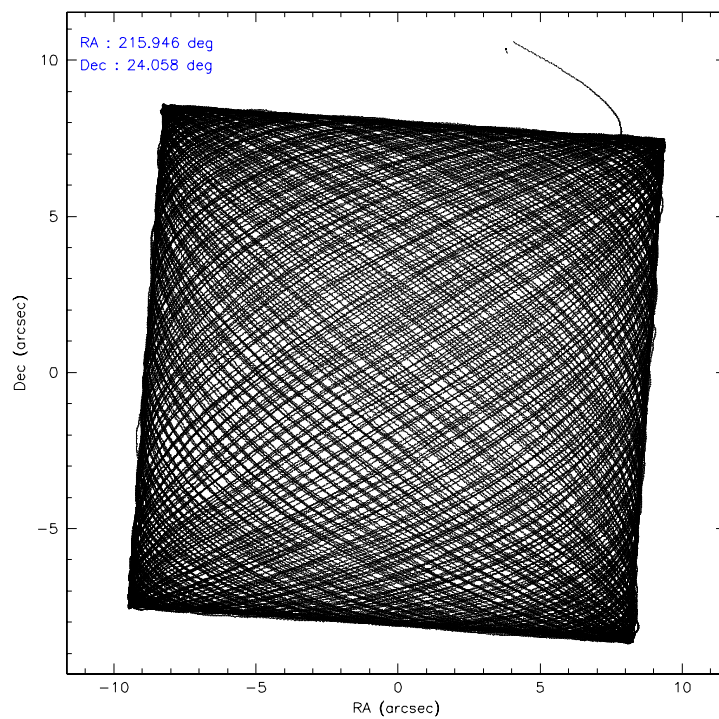
	ccd 2	ccd 3	ccd 5	ccd 6	ccd 7
grade 0 events	21434	20365	57641	22333	33363
	3%	3%	6%	3%	4%
grade 1 events	296	301	630	255	348
	0%	0%	0%	0%	0%
grade 2 events	13425	11938	116472	13172	80110
	2%	2%	14%	2%	11%
grade 3 events	6532	6511	10117	7048	22020
	1%	1%	1%	1%	3%
grade 4 events	6779	6552	9796	6974	21393
	1%	1%	1%	1%	3%
grade 5 events	19955	23159	43191	23959	51905
	3%	3%	5%	3%	7%
grade 6 events	10960	11065	213217	13150	167125
	1%	1%	25%	2%	23%
grade 7 events	534595	509765	373473	519897	332164
	87%	86%	45%	85%	46%

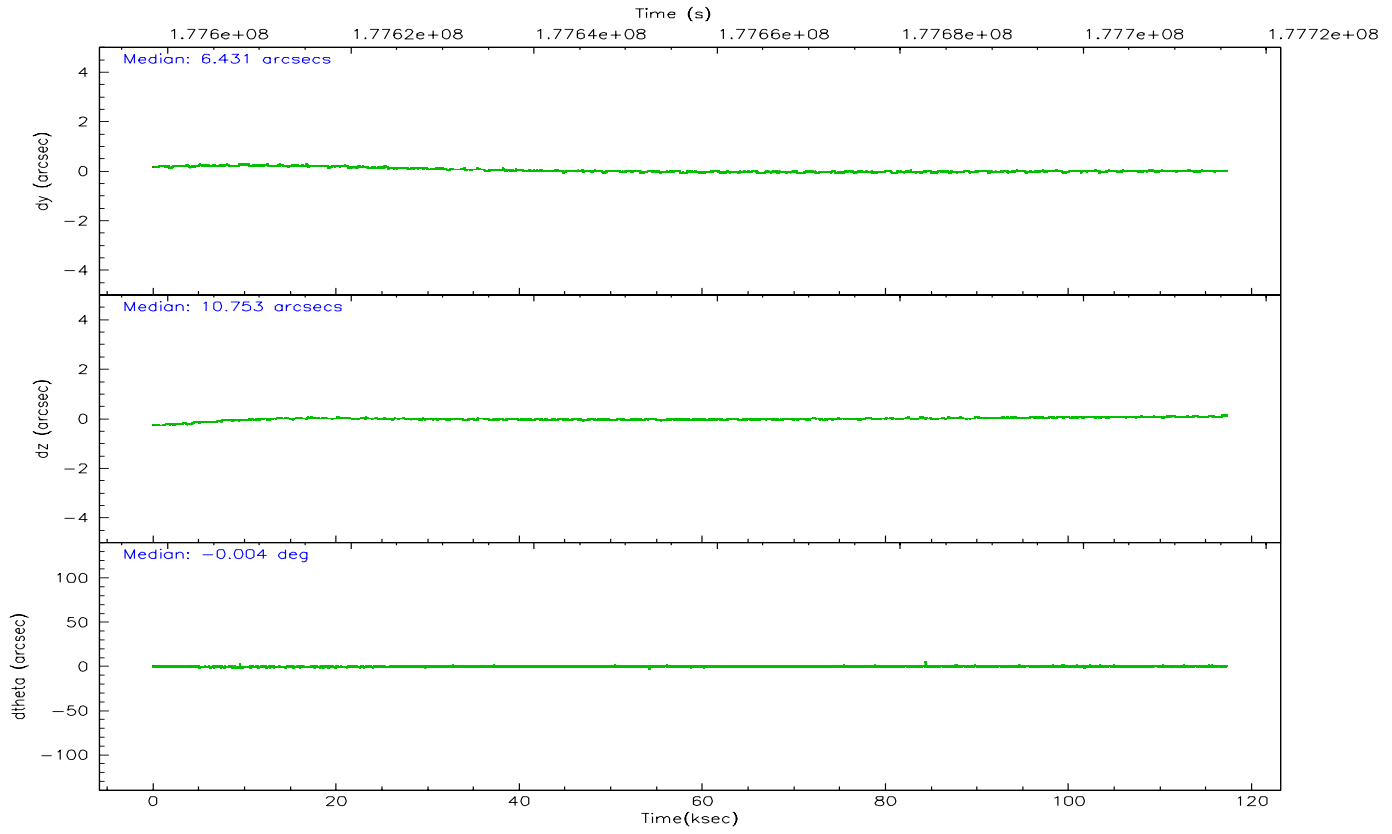
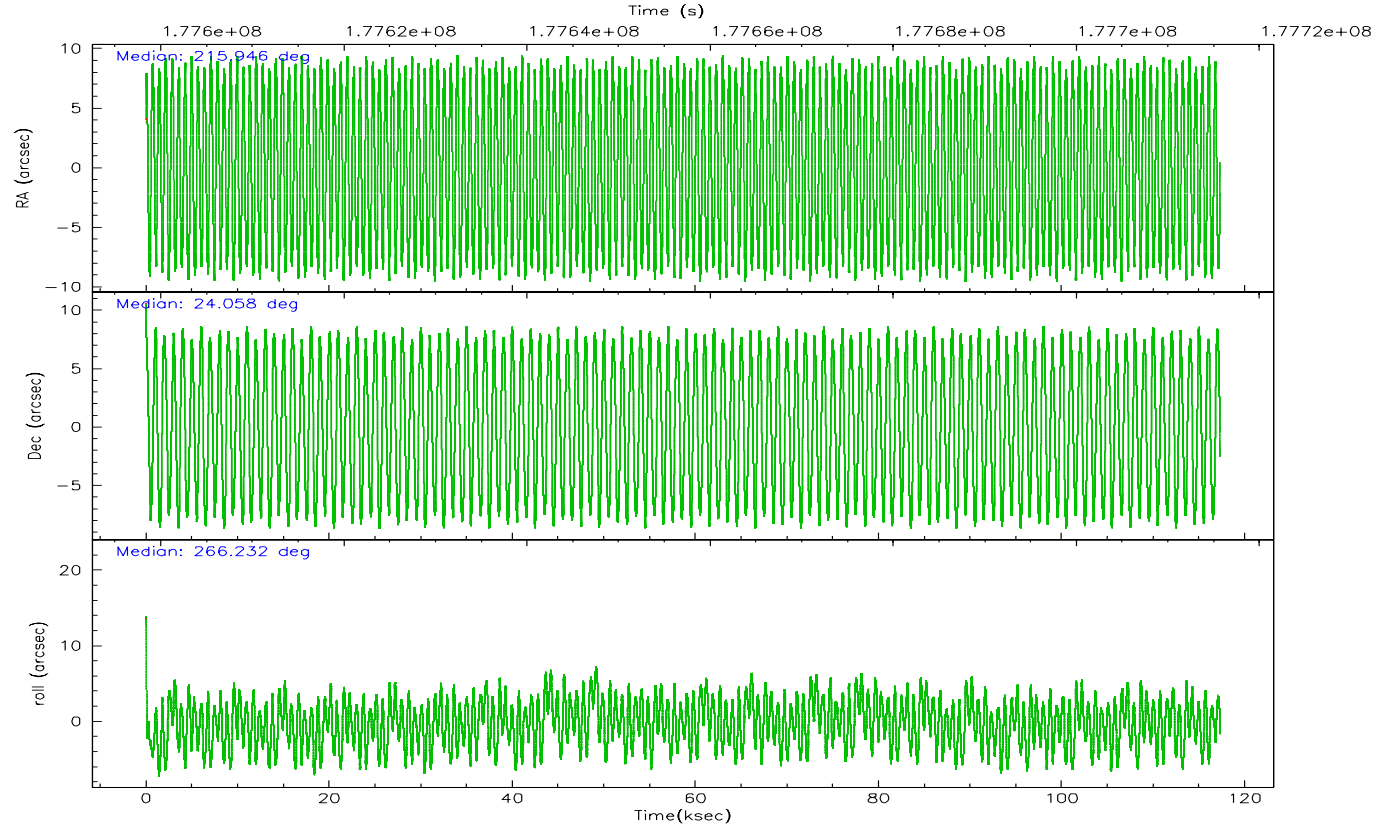


## 2.2 Compared Parameters

Parameter	Planned	Actual	Parameter	Planned	Actual
Instrument	ACIS	ACIS	Obspar format version number	6	6
Detector	ACIS-23567	ACIS-23567	Obspar file type	PREDICTED	ACTUAL
Grating	NONE	NONE	Obspar update status	NONE	UPDATED
Data mode	VFAINT	VFAINT	On-chip summing requested	N	N
Observation mode	POINTING	POINTING	Subarray requested	NONE	NONE
Pointing RA	215.932250	215.9457941956913	Alternating exposures requested	N	N
Pointing Dec	24.081897	24.05765877778123	Primary exposure time	0.000000	3.1
Pointing Roll	266.087787	266.2388859917349			
SIM focus pos (mm)	-0.684267	-0.6828225247311905			
SIM defocus (mm)	0	0.001444936568705701			
SIM translation stage pos (mm)	-190.132523	-190.1400660498719			
SIM translation stage offset (mm)	0	0.00754346686406393			
Observation start time	177598712.184000	177597683.29319			
Observation start date	2003-08-18T12:57:28	2003-08-18T12:41:23			
Observation end time	177715712.184000	177716183.54826			
Observation end date	2003-08-19T21:27:28	2003-08-19T21:36:23			
Read mode	TIMED	TIMED			

## 2.3 Aspect



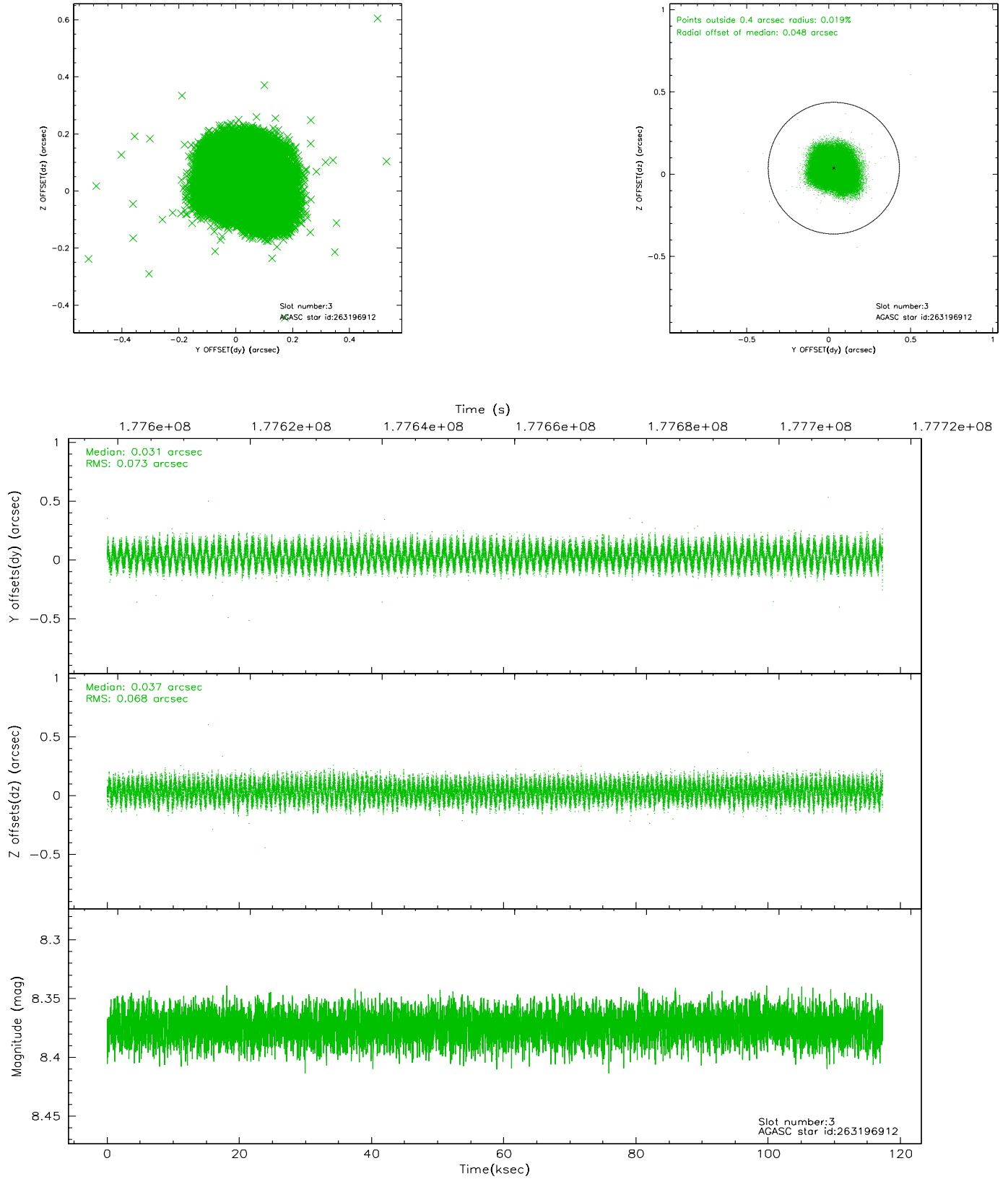


### Slot Statistics

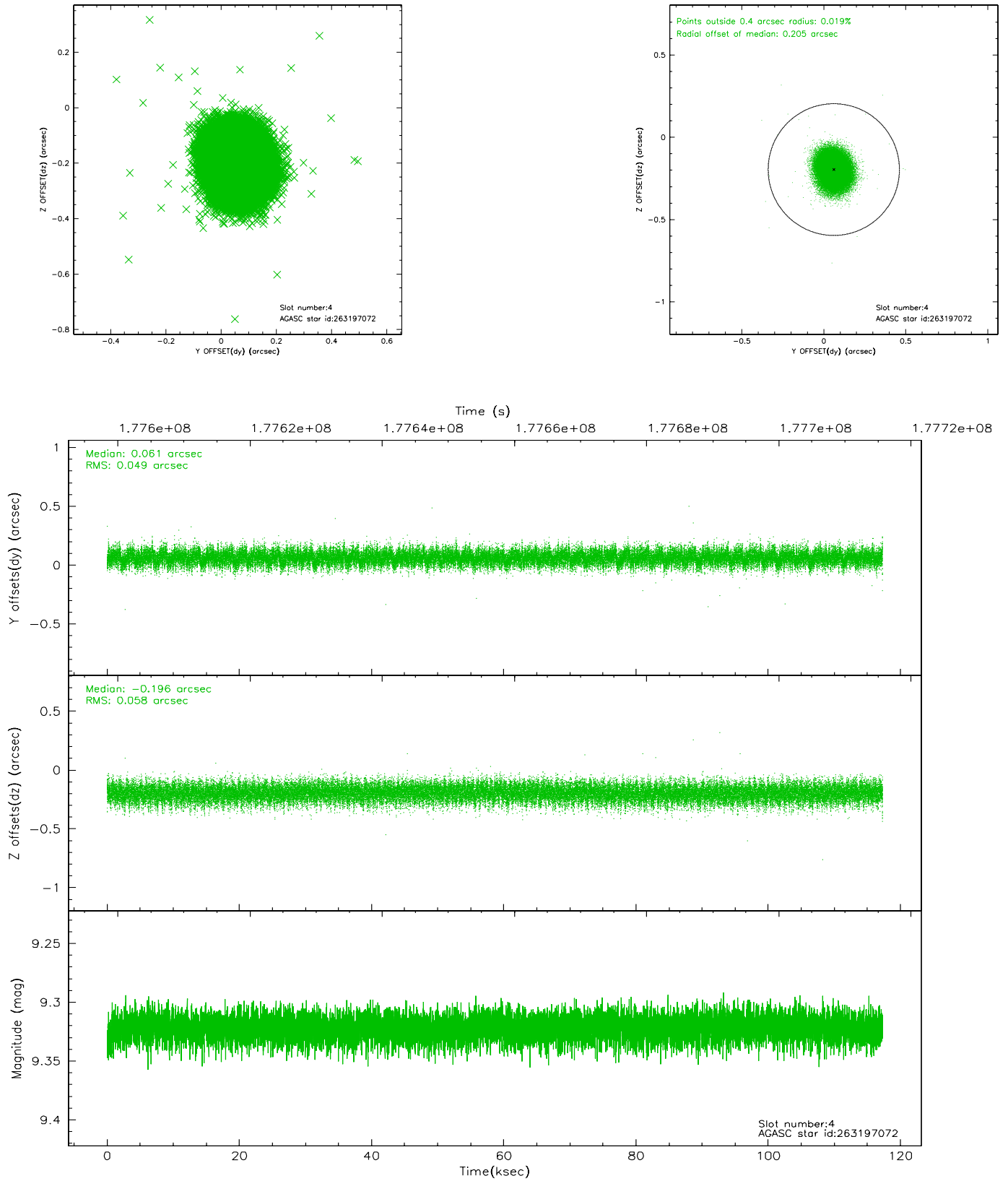
slot	status	id	mag	n_pts	med_dy	med_dz	dr1	dr2	ra	dec	mean_y	mean_z
0	FID	ACIS-S-2	7.10	28615	-0.030	-0.012	0.005	0.009	0.000000	0.000000	-759.23	-1732.04
1	FID	ACIS-S-4	7.20	28615	0.021	0.017	0.006	0.011	0.000000	0.000000	2154.13	176.60
2	FID	ACIS-S-6	7.34	28616	-0.018	0.002	0.007	0.012	0.000000	0.000000	402.62	813.86
3	GUIDE	263196912	8.37	57216	0.031	0.037	0.109	0.163	215.746107	24.106688	-47.17	-616.04
4	GUIDE	263197072	9.32	57195	0.061	-0.196	0.081	0.132	215.411126	24.144683	-111.17	-1723.50
5	GUIDE	263197752	9.88	57192	-0.078	0.159	0.105	0.170	216.459905	24.528502	-1725.08	1614.44
6	GUIDE	263198456	8.72	57216	0.038	0.046	0.082	0.126	215.550984	23.637397	1681.21	-1144.93
7	GUIDE	263198488	8.00	57219	-0.053	-0.036	0.055	0.092	215.302096	24.133252	-46.95	-2078.20

## 2.4 Star Slots

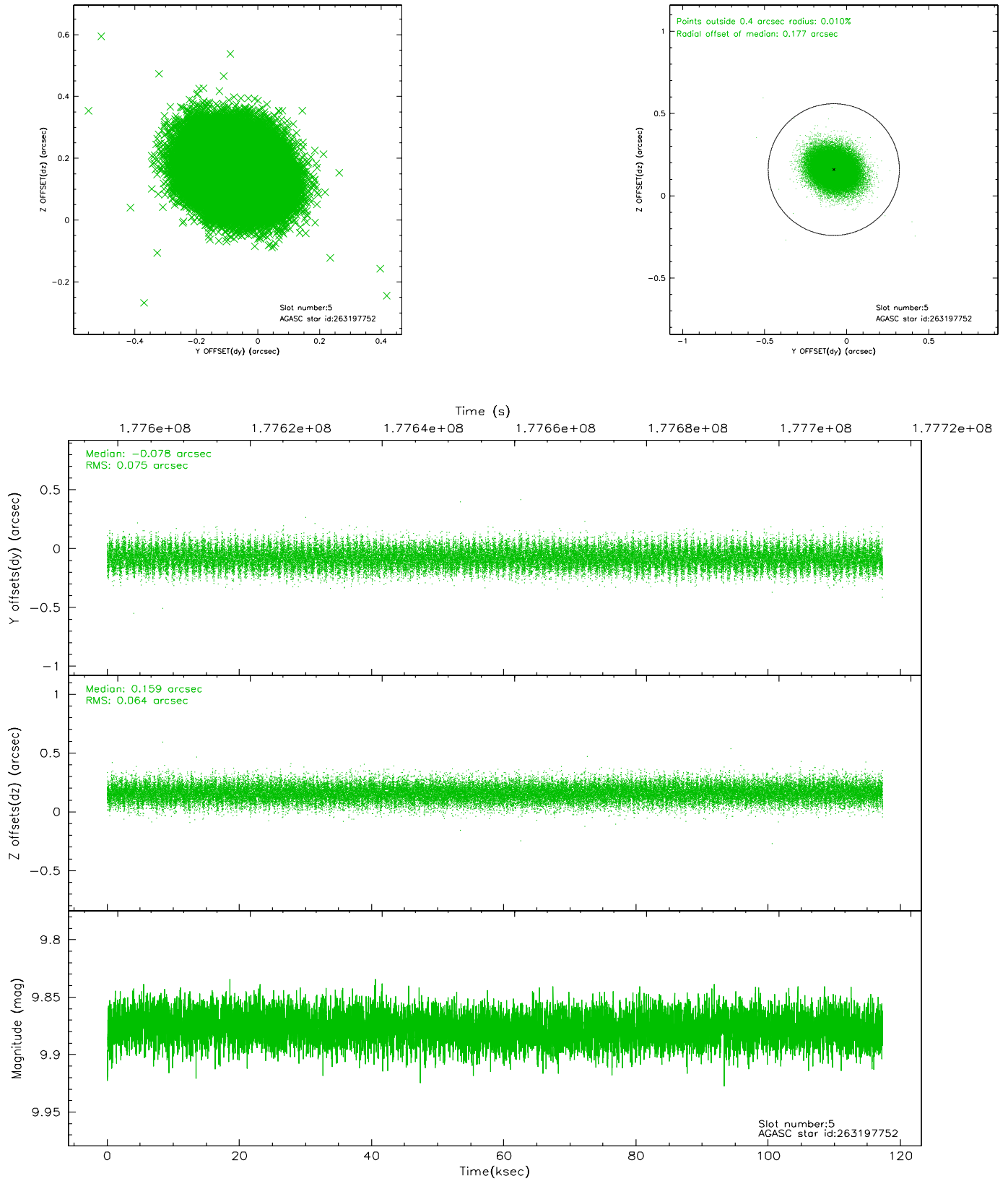
### 2.4.1 Slot 3



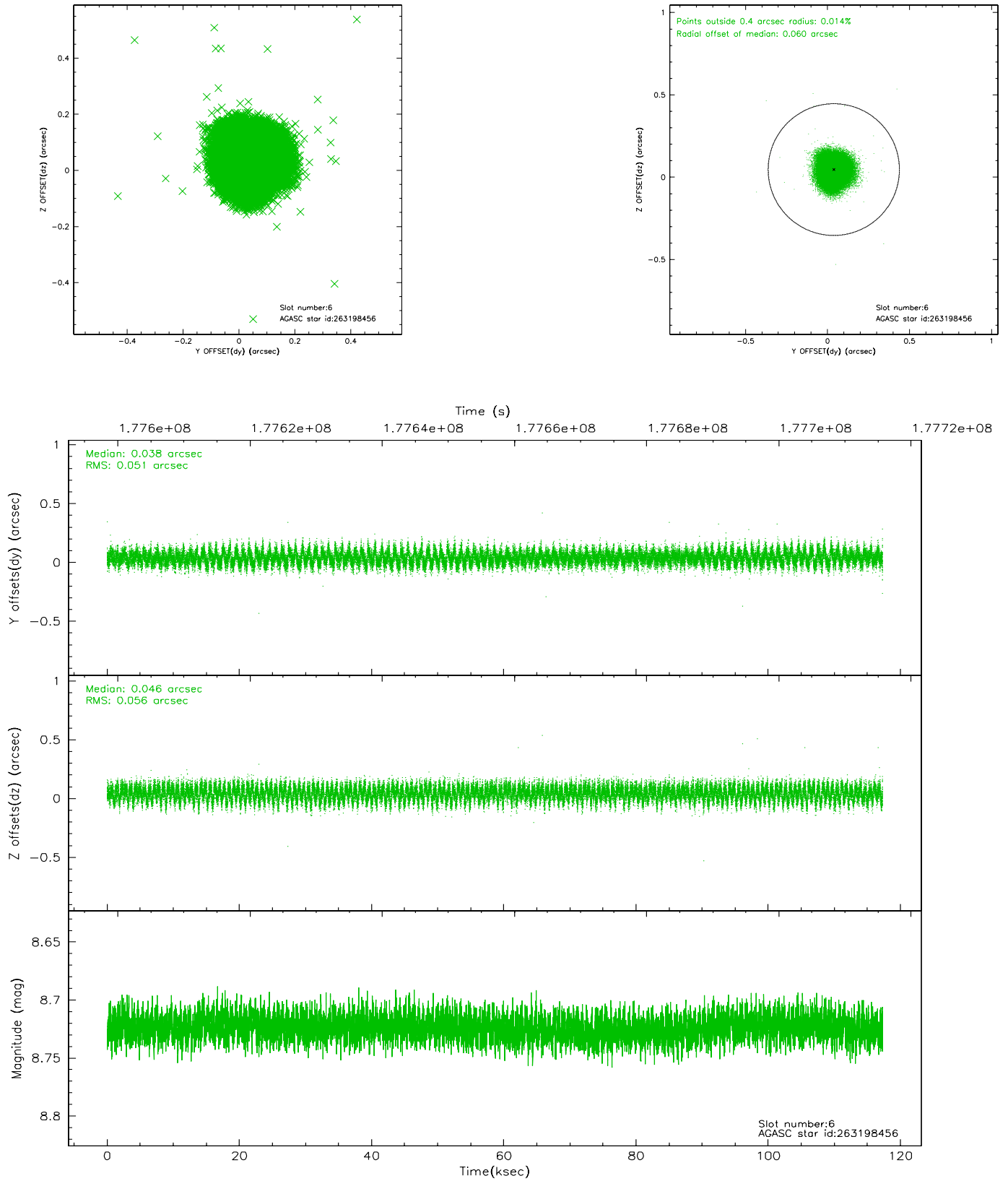
## 2.4.2 Slot 4



### 2.4.3 Slot 5

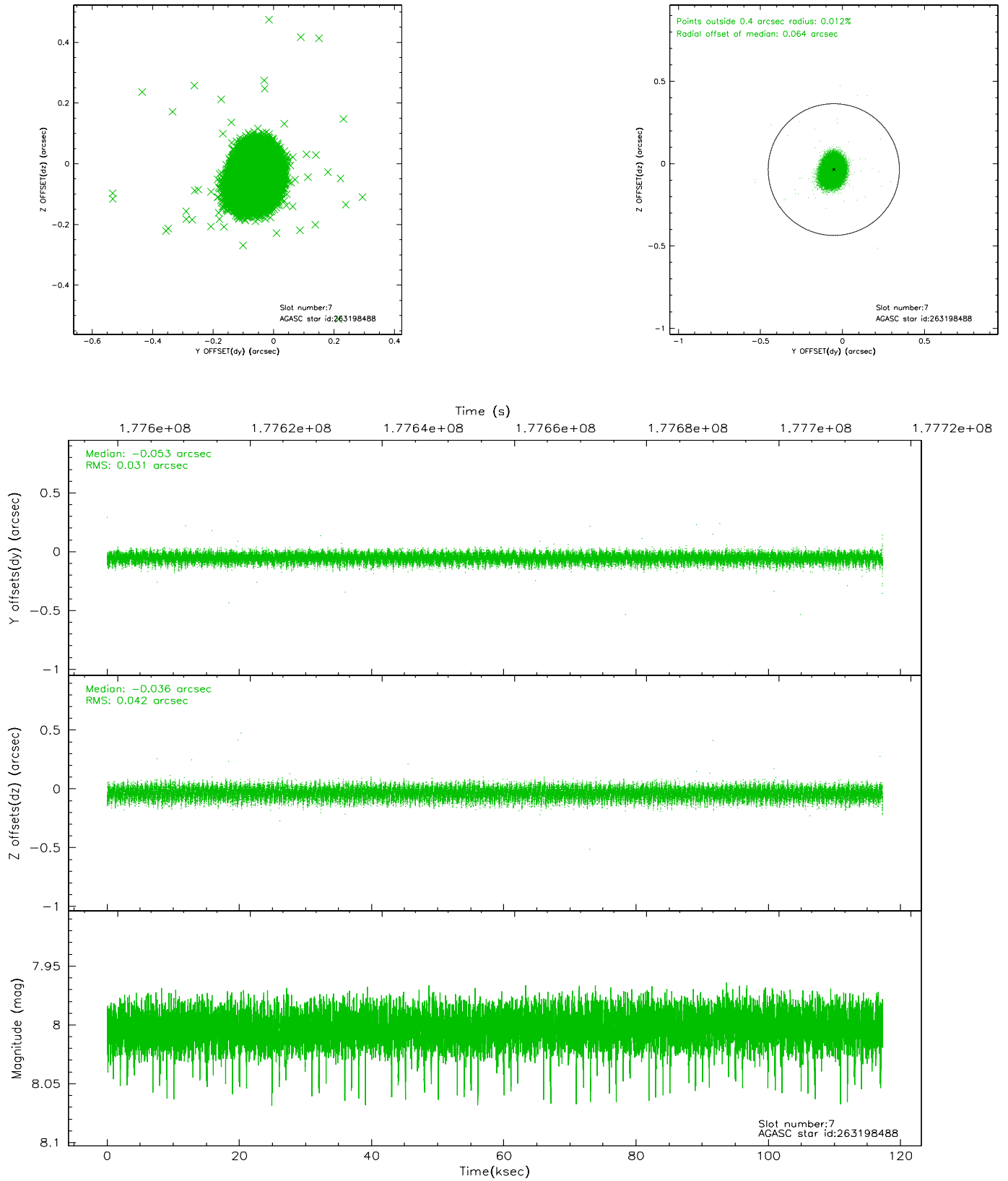


## 2.4.4 Slot 6



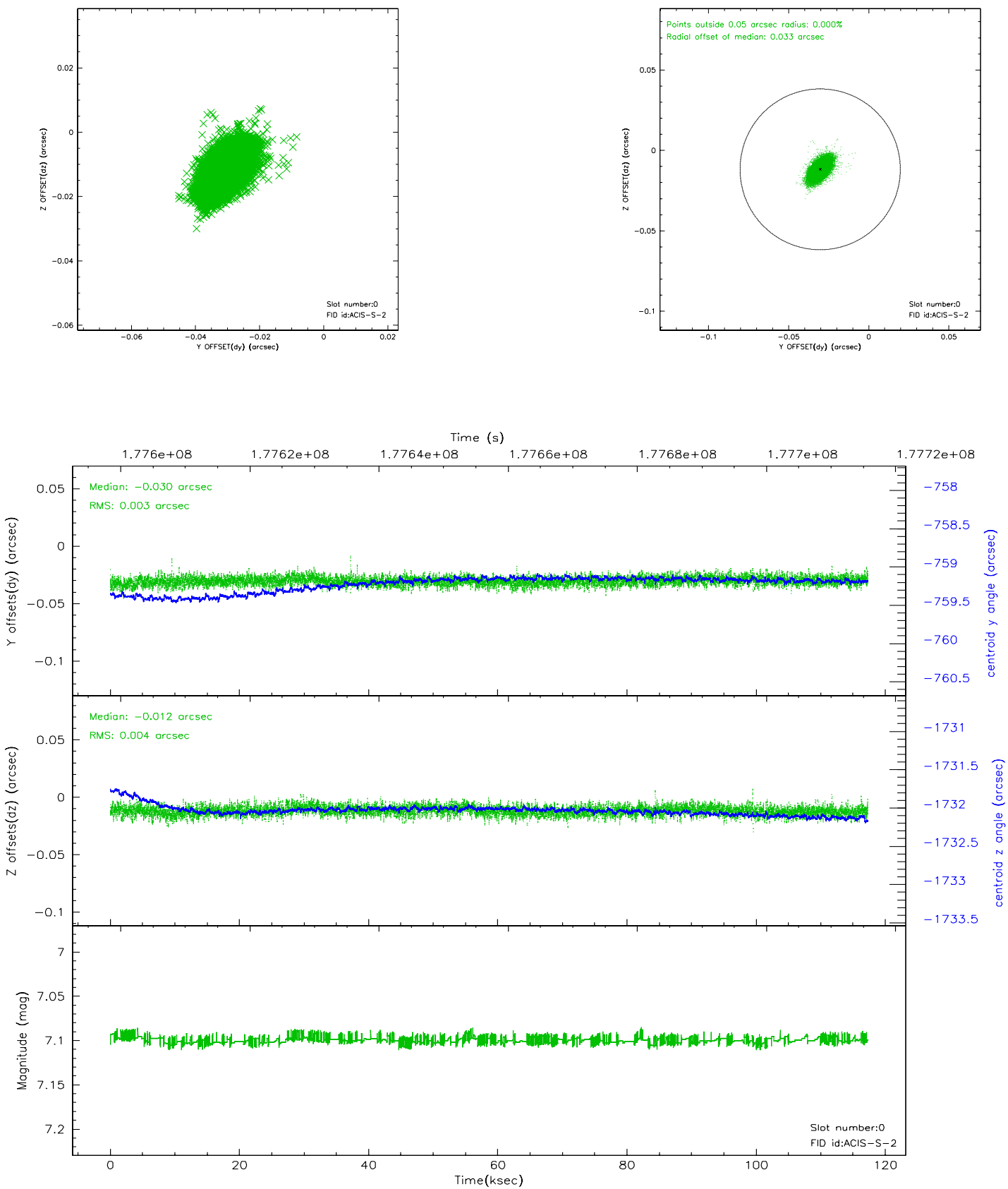


## 2.4.5 Slot 7

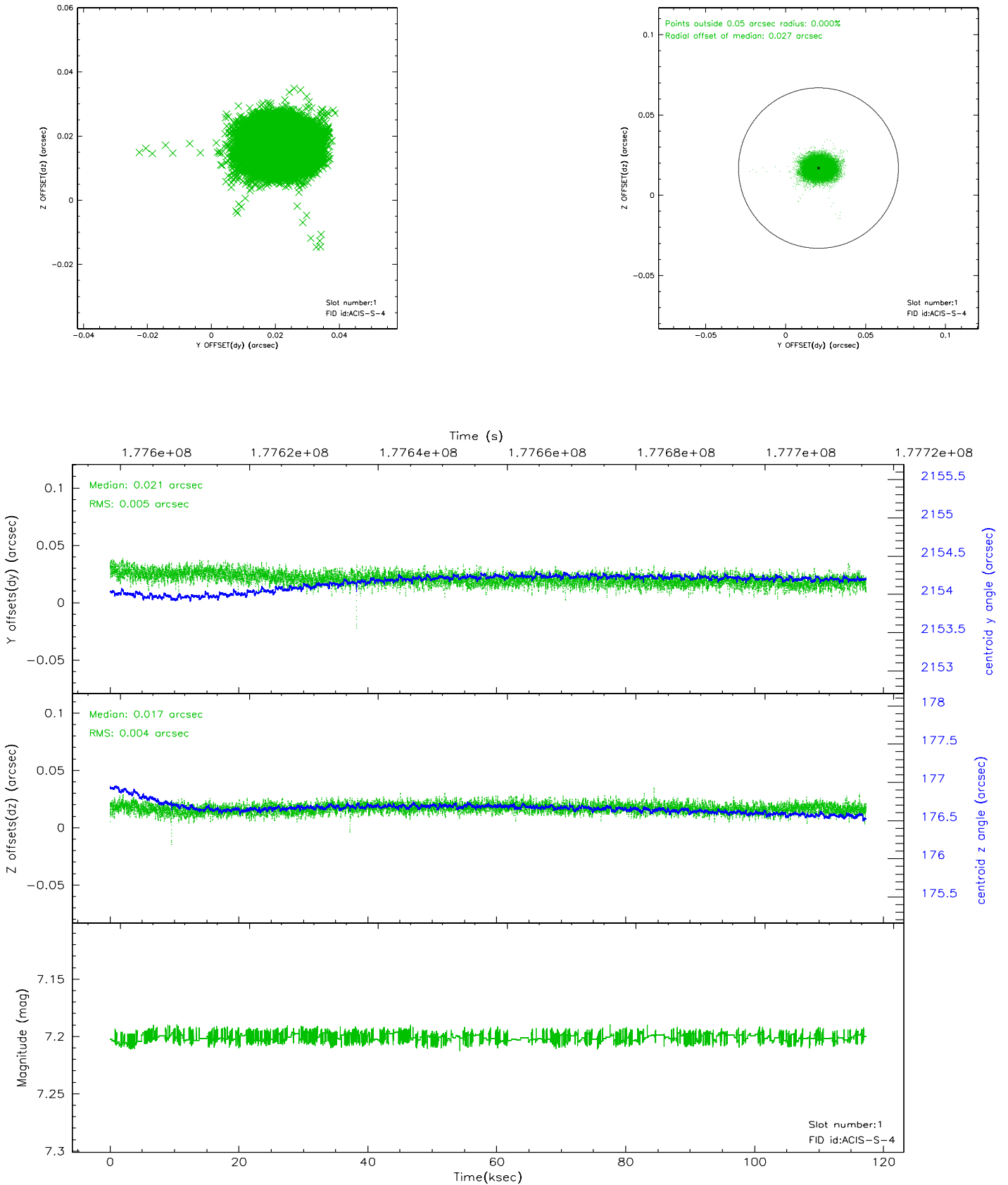


## 2.5 FID Slots

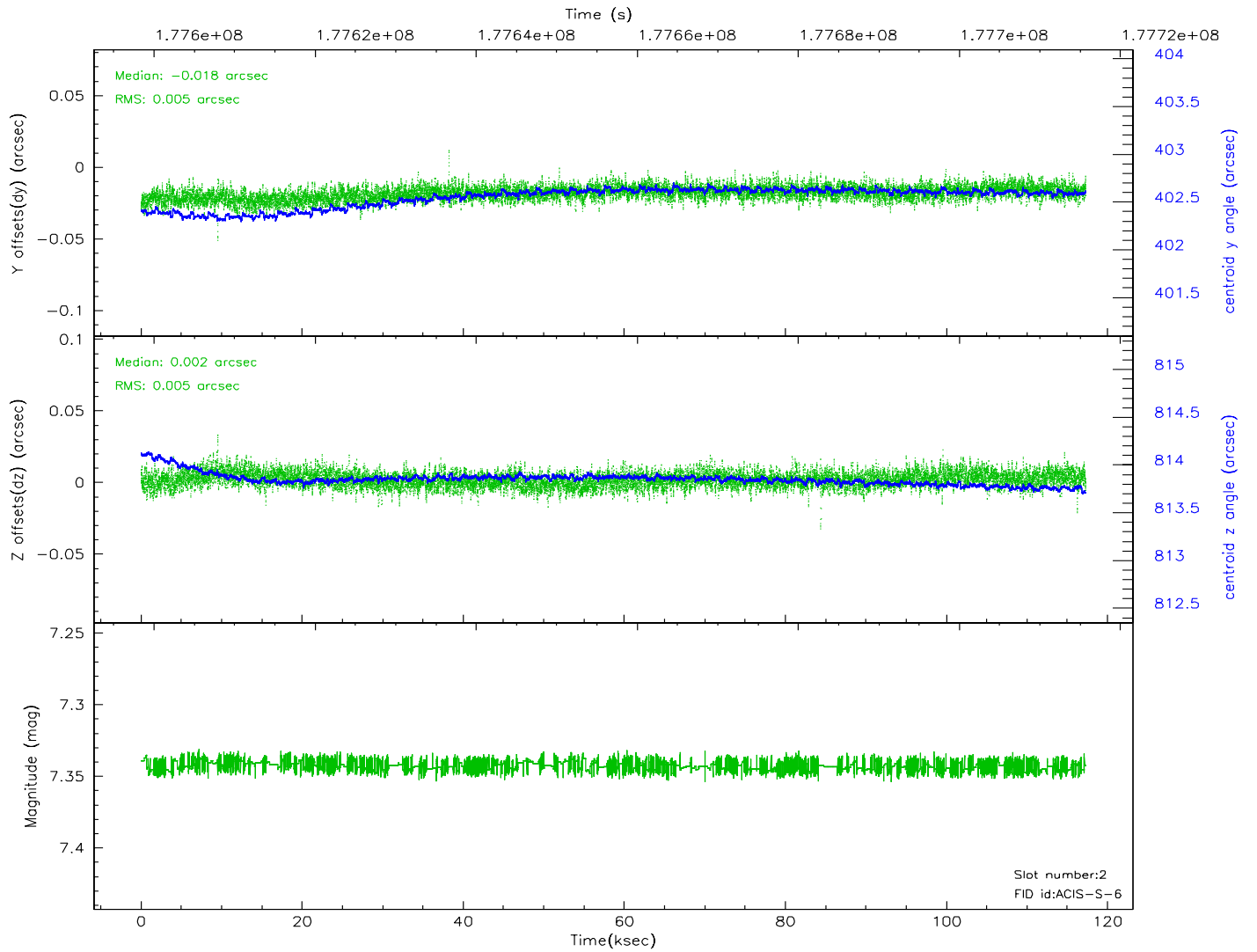
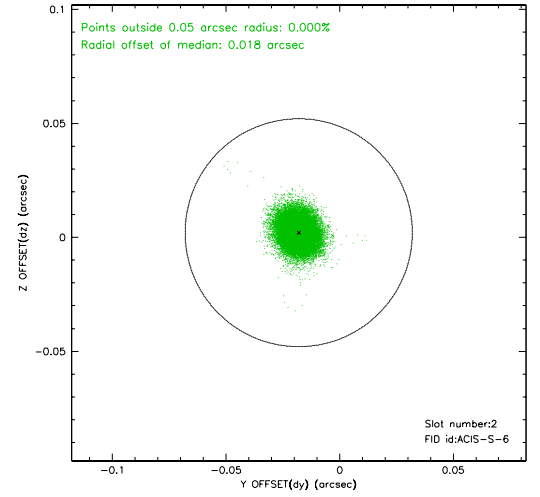
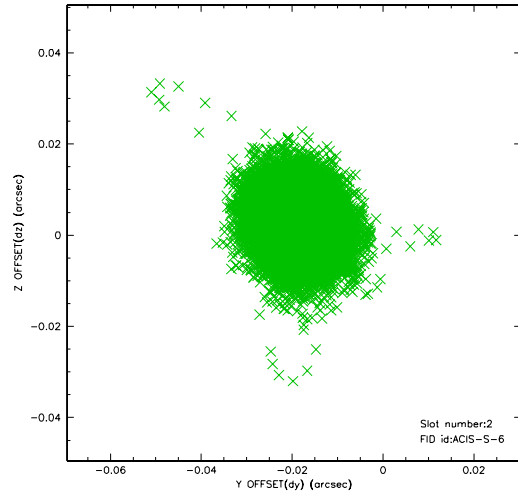
### 2.5.1 Slot 0



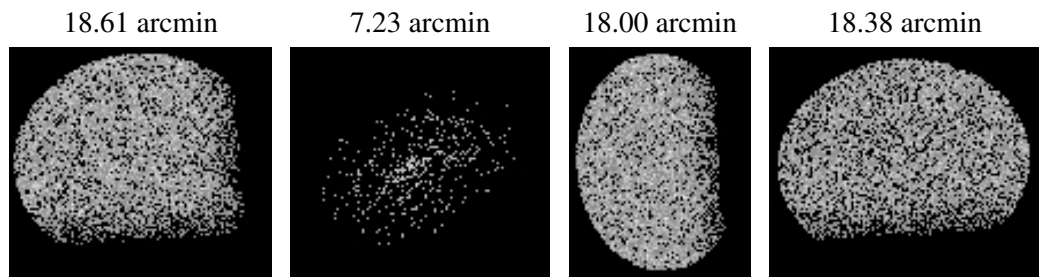
## 2.5.2 Slot 1



### 2.5.3 Slot 2



### 3 Point Sources



## A Summary

### A.1 Status

V&V Scientist	Jen Lauer
V&V Date (YYYY-MM-DD)	2006.07.11
V&V Edition	1
V&V Disposition and Status	OK
V&V Charge Time	117.105

### A.2 Comments