

# V&V Reference Report

## L2 ASCDS Version : 7.6.8

Observation 4185 - L2 Version 001  
Chandra X-Ray Center

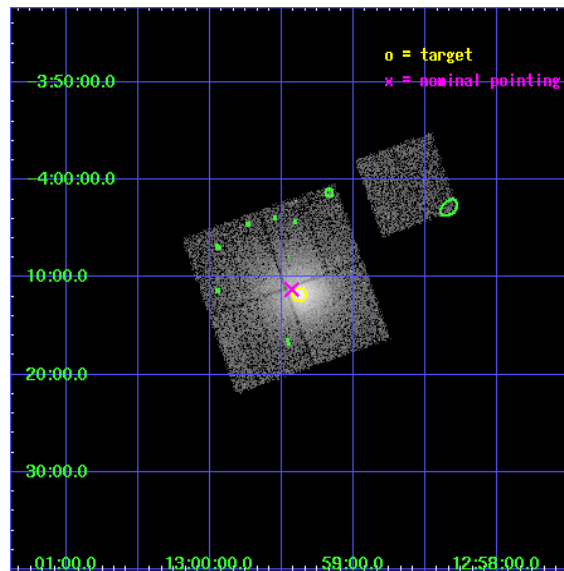
L2 Processing Date : Jul 22 2006

## Contents

<b>1</b>	<b>Front</b>	<b>2</b>
<b>2</b>	<b>OBI</b>	<b>3</b>
2.1	OBI . . . . .	3
2.1.1	Images . . . . .	3
2.1.2	Bias . . . . .	3
2.1.3	Parameters . . . . .	4
2.1.4	Events . . . . .	4
2.2	Compared Parameters . . . . .	5
2.3	Aspect . . . . .	6
2.4	Star Slots . . . . .	9
2.4.1	Slot 3 . . . . .	9
2.4.2	Slot 4 . . . . .	10
2.4.3	Slot 5 . . . . .	11
2.4.4	Slot 6 . . . . .	12
2.4.5	Slot 7 . . . . .	13
2.5	FID Slots . . . . .	14
2.5.1	Slot 0 . . . . .	14
2.5.2	Slot 1 . . . . .	15
2.5.3	Slot 2 . . . . .	16
<b>3</b>	<b>Point Sources</b>	<b>17</b>
<b>A</b>	<b>Summary</b>	<b>18</b>
A.1	Status . . . . .	18
A.2	Comments . . . . .	18

# 1 Front

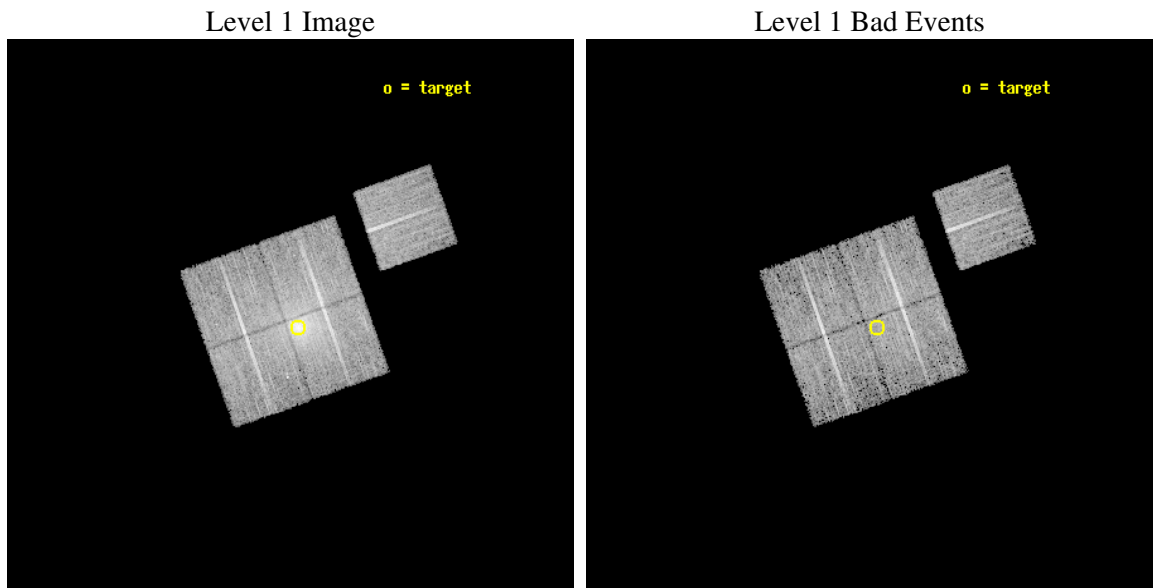
seq_num	800341
obs_id	4185
title	THE HIFLUGCS CLUSTER SURVEY: A CORNERSTONE FOR COSMOLOGY
observer	Dr. Craig Sarazin
object	A1651
dtcycle	0
cycle	P
ra_targ	194.843542
dec_targ	-4.196111
ra_nom	194.85739050525
dec_nom	-4.187667397863
roll_nom	70.440920842913
revision	2
ontime	9771.1999812126
livedtime	9643.5320600053
ontime0	9771.1999812126
ontime1	9771.1999812126
ontime2	9771.1999812126
ontime3	9771.1999812126
ontime6	9771.1999812126
l2events	57545



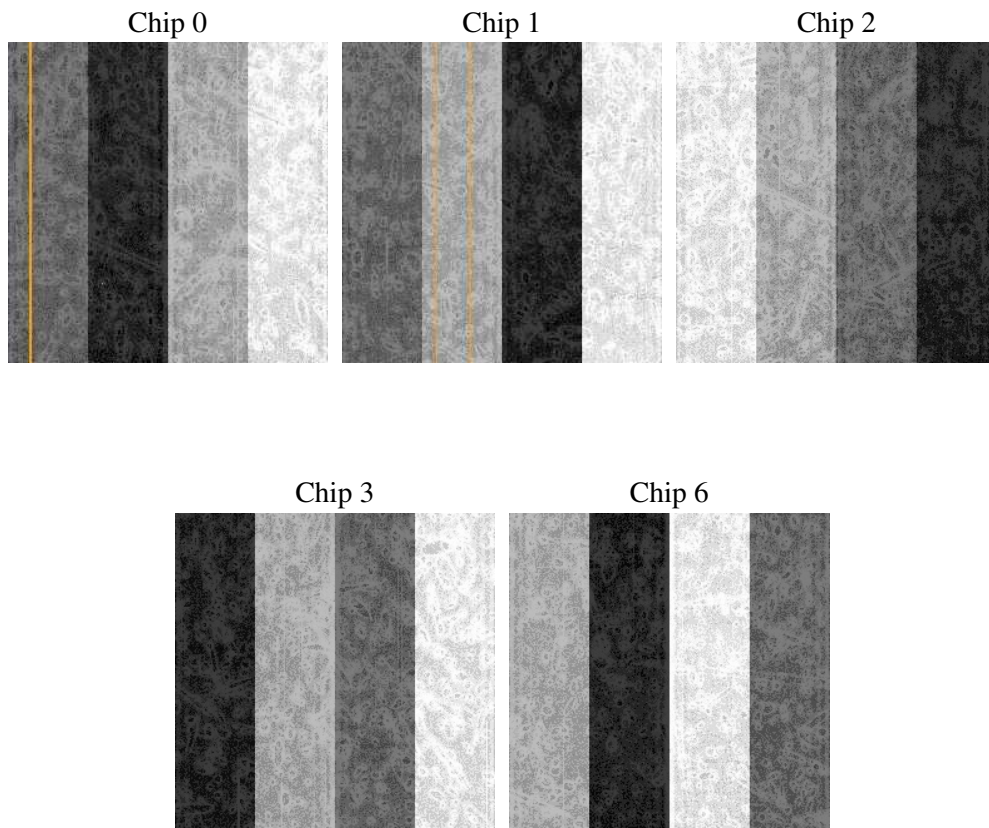
## 2 OBI

### 2.1 OBI

#### 2.1.1 Images



#### 2.1.2 Bias



### 2.1.3 Parameters

obi_num	1
ascdsver	7.6.8
caldbver	3.2.2
date	2006-07-22T10:47:26
revision	2

sched_exp_time	10000.000000
ontime	9777.9625709653
ontime0	9777.9625709653
ontime1	9777.9625510275
ontime2	9777.9625709653
ontime3	9777.9625709653
ontime6	9777.9625709653
llevents	305574

### 2.1.4 Events

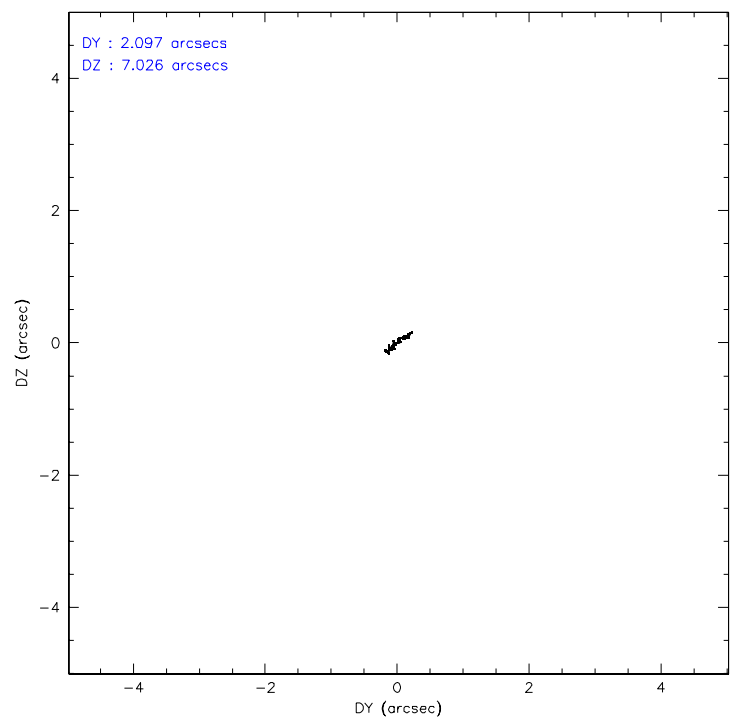
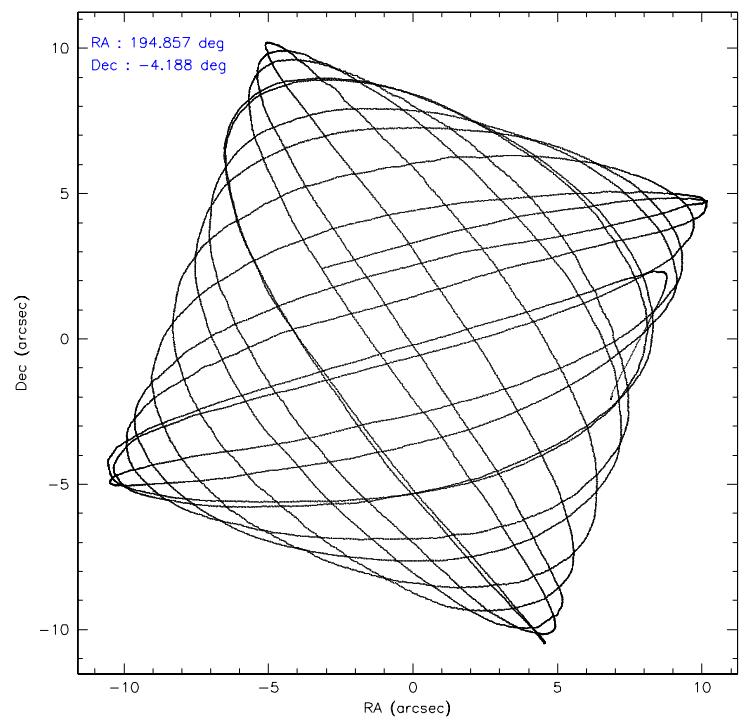
	ccd 0	ccd 1	ccd 2	ccd 3	ccd 6
level 1 events	55351	56041	63661	75929	54592
rejected events	46012	44626	52248	49826	49252
rejected %	83%	79%	82%	65%	90%

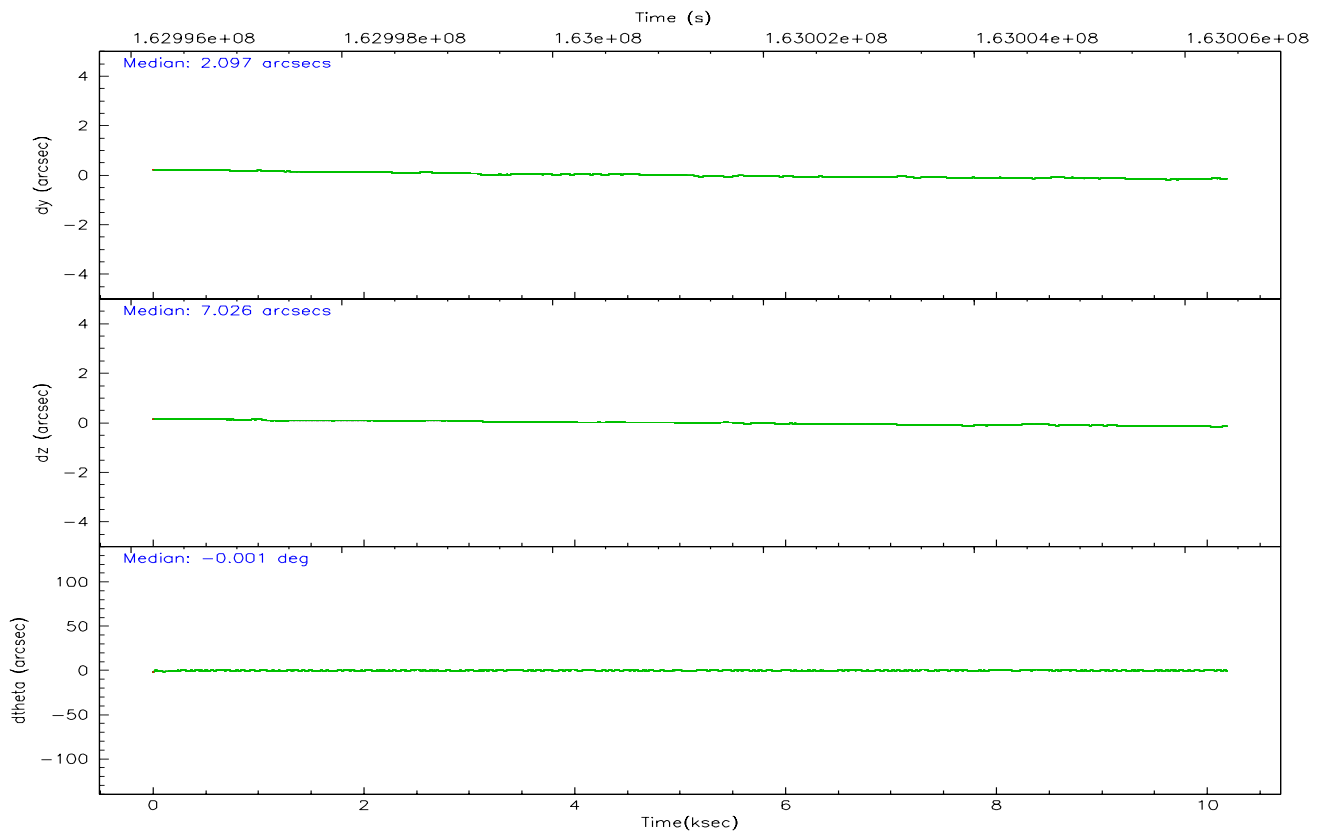
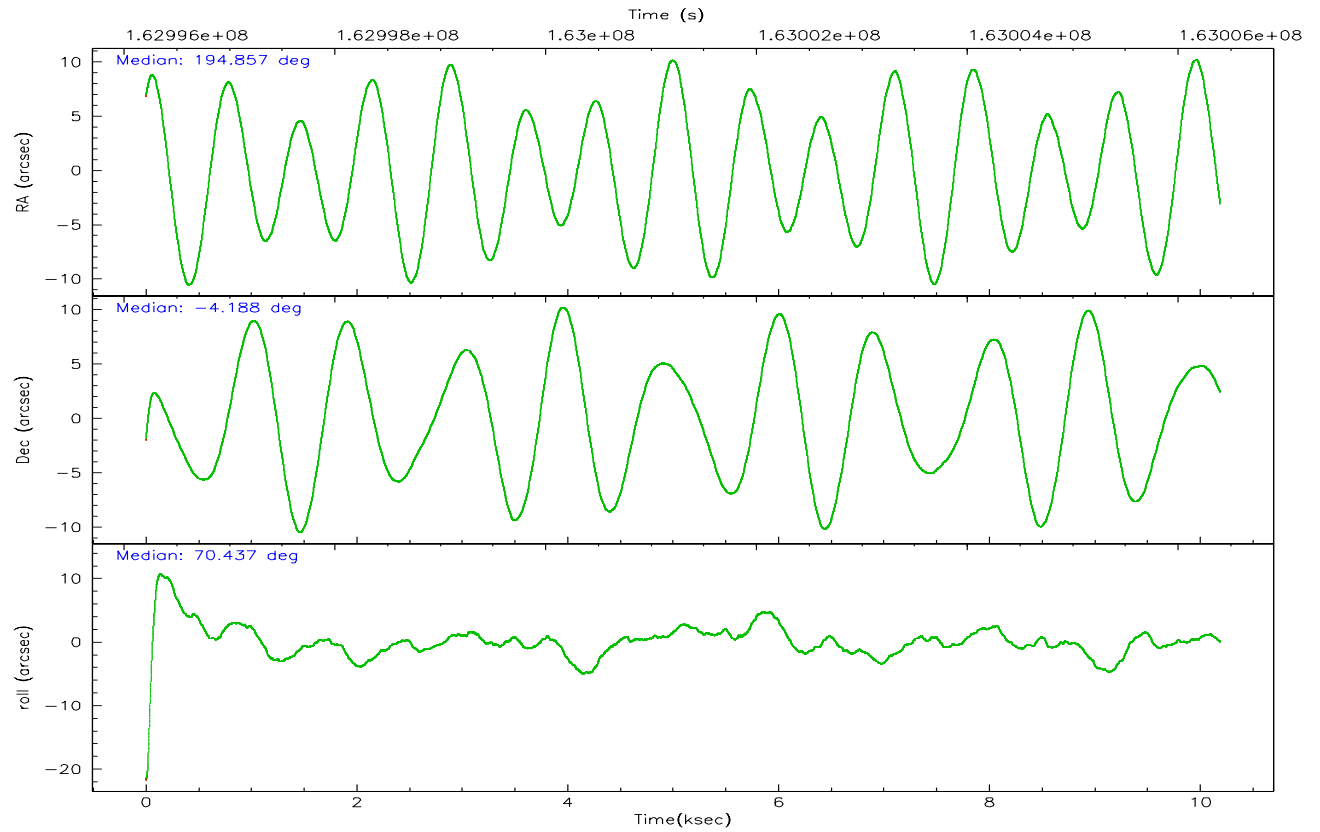
	ccd 0	ccd 1	ccd 2	ccd 3	ccd 6
grade 0 events	5178	6623	7110	19288	1924
	9%	11%	11%	25%	3%
grade 1 events	35	46	53	109	20
	0%	0%	0%	0%	0%
grade 2 events	1627	1828	1782	3015	1088
	2%	3%	2%	3%	1%
grade 3 events	724	866	714	1167	634
	1%	1%	1%	1%	1%
grade 4 events	727	822	749	1173	616
	1%	1%	1%	1%	1%
grade 5 events	1831	2001	1837	2080	2002
	3%	3%	2%	2%	3%
grade 6 events	1092	1282	1066	1473	1080
	1%	2%	1%	1%	1%
grade 7 events	44137	42573	50350	47624	47228
	79%	75%	79%	62%	86%

## 2.2 Compared Parameters

Parameter	Planned	Actual	Parameter	Planned	Actual
Instrument	ACIS	ACIS	Obspar format version number	6	6
Detector	ACIS-01236	ACIS-01236	Obspar file type	PREDICTED	ACTUAL
Grating	NONE	NONE	Obspar update status	NONE	UPDATED
Data mode	VFAINT	VFAINT	On-chip summing requested	N	N
Observation mode	POINTING	POINTING	Subarray requested	NONE	NONE
Pointing RA	194.862460	194.8573905052472	Alternating exposures requested	N	N
Pointing Dec	-4.214584	-4.18766739786301	Primary exposure time	0.000000	3.1
Pointing Roll	70.232638	70.44092084291302			
SIM focus pos (mm)	-0.782348	-0.7809083437167272			
SIM defocus (mm)	0	0.001439871863259334			
SIM translation stage pos (mm)	-233.592463	-233.5874344608287			
SIM translation stage offset (mm)	0	-0.005018542100998502			
Observation start time	162996397.184000	162995307.68655			
Observation start date	2003-03-02T12:45:33	2003-03-02T12:28:27			
Observation end time	163006397.184000	163006717.98703			
Observation end date	2003-03-02T15:32:13	2003-03-02T15:38:37			
Read mode	TIMED	TIMED			

## 2.3 Aspect





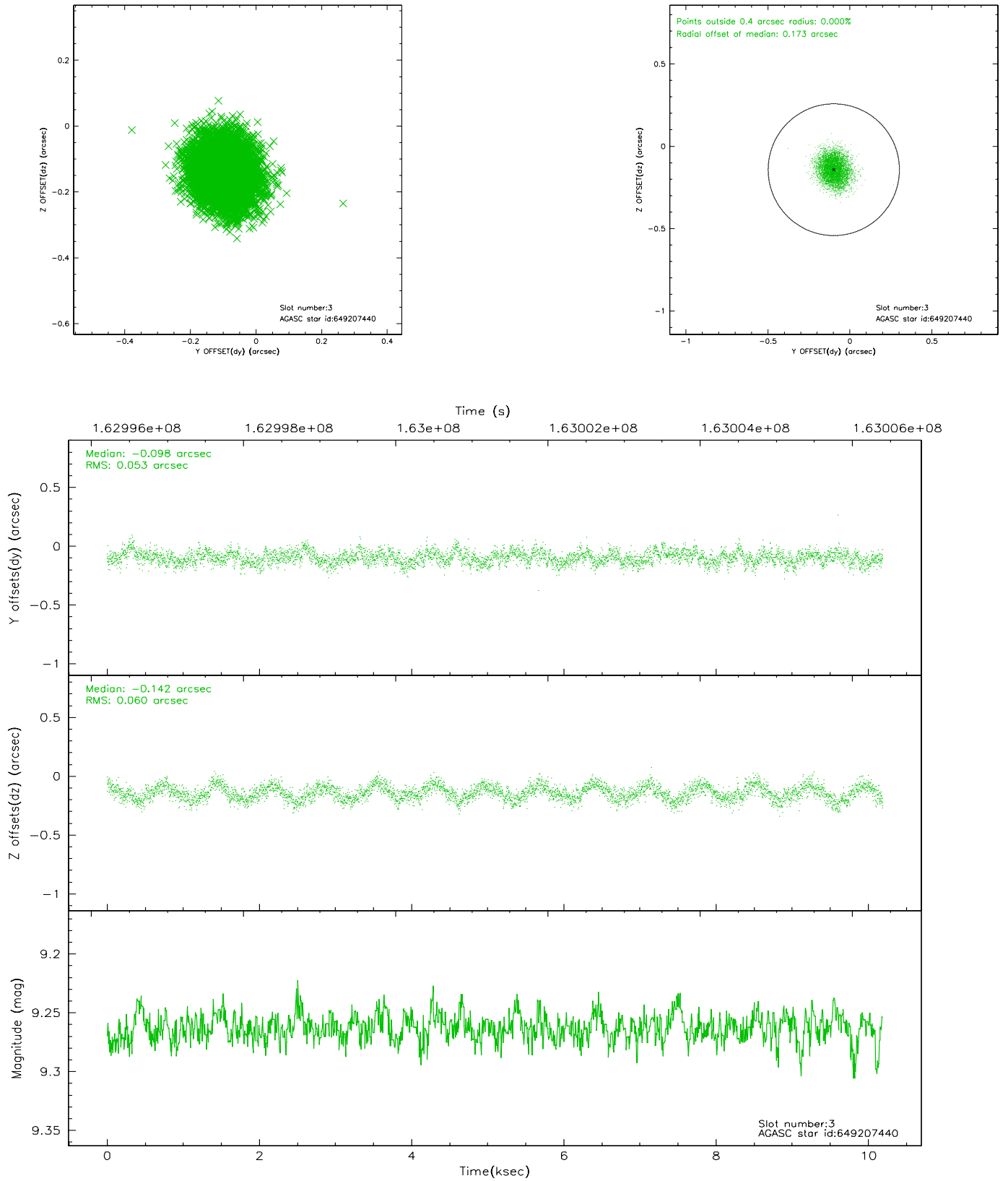
### Slot Statistics

slot	status	id	mag	n_pts	med_dy	med_dz	dr1	dr2	ra	dec	mean_y	mean_z
0	FID	ACIS-I-1	7.25	2486	-0.015	0.040	0.007	0.011	0.000000	0.000000	937.68	-830.40
1	FID	ACIS-I-5	7.24	2486	-0.036	0.045	0.006	0.010	0.000000	0.000000	-1810.12	1066.90
2	FID	ACIS-I-6	7.26	2486	-0.040	-0.015	0.007	0.011	0.000000	0.000000	402.70	1711.88
3	GUIDE	649207440	9.26	4968	-0.098	-0.142	0.087	0.135	194.739470	-3.656543	1741.02	1095.87
4	GUIDE	649208440	9.77	4967	0.039	-0.185	0.147	0.237	194.124200	-4.484025	-1809.81	2165.30
5	GUIDE	650117472	9.64	4970	-0.120	0.169	0.115	0.187	195.607602	-4.000561	1628.62	-2256.71
6	GUIDE	650126048	9.74	4964	0.109	0.081	0.100	0.162	195.142698	-4.886476	-1936.04	-1764.23
7	GUIDE	649205696	7.93	4969	0.063	0.079	0.066	0.102	194.848693	-4.906768	-2361.90	-796.40

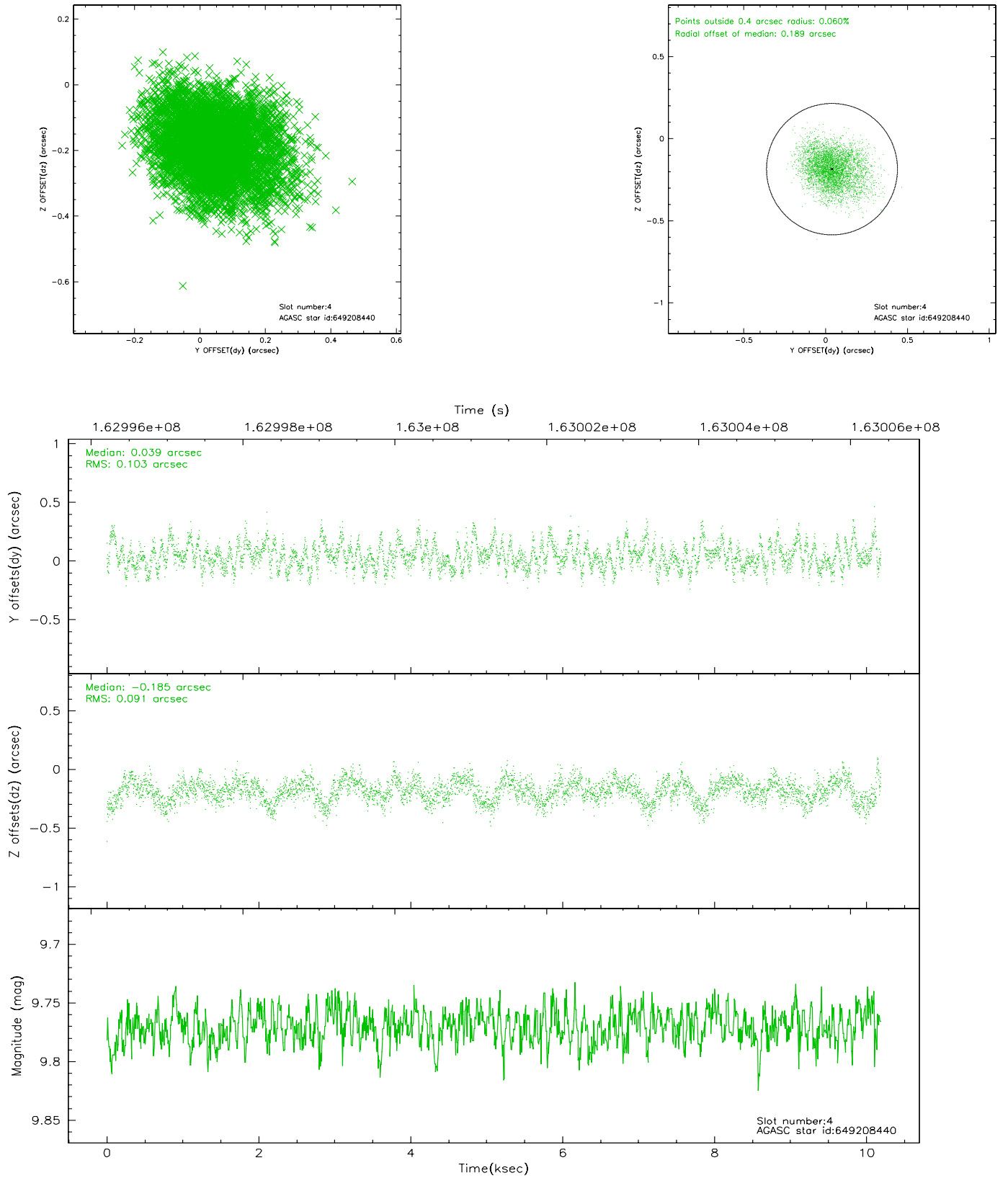


## 2.4 Star Slots

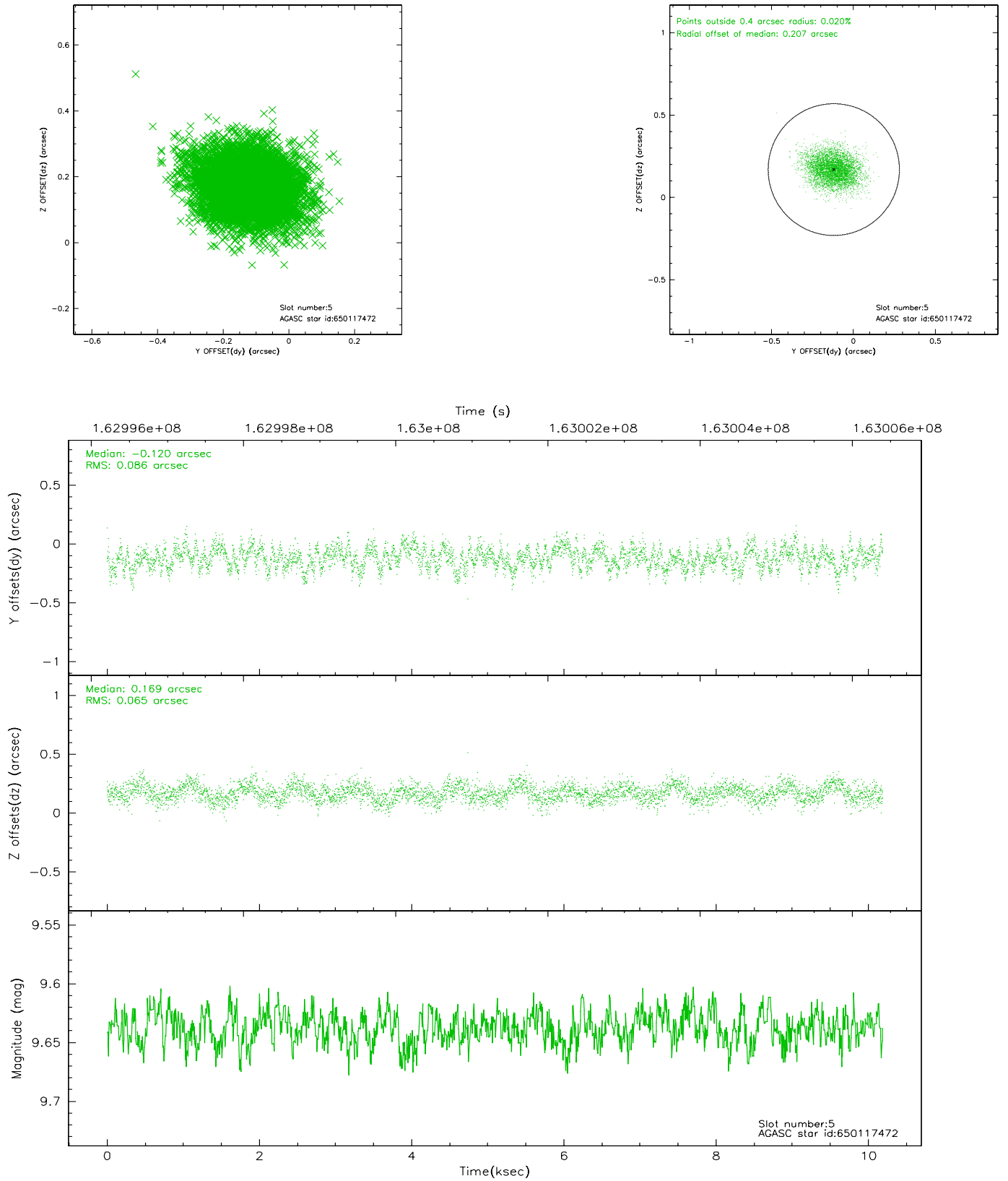
### 2.4.1 Slot 3



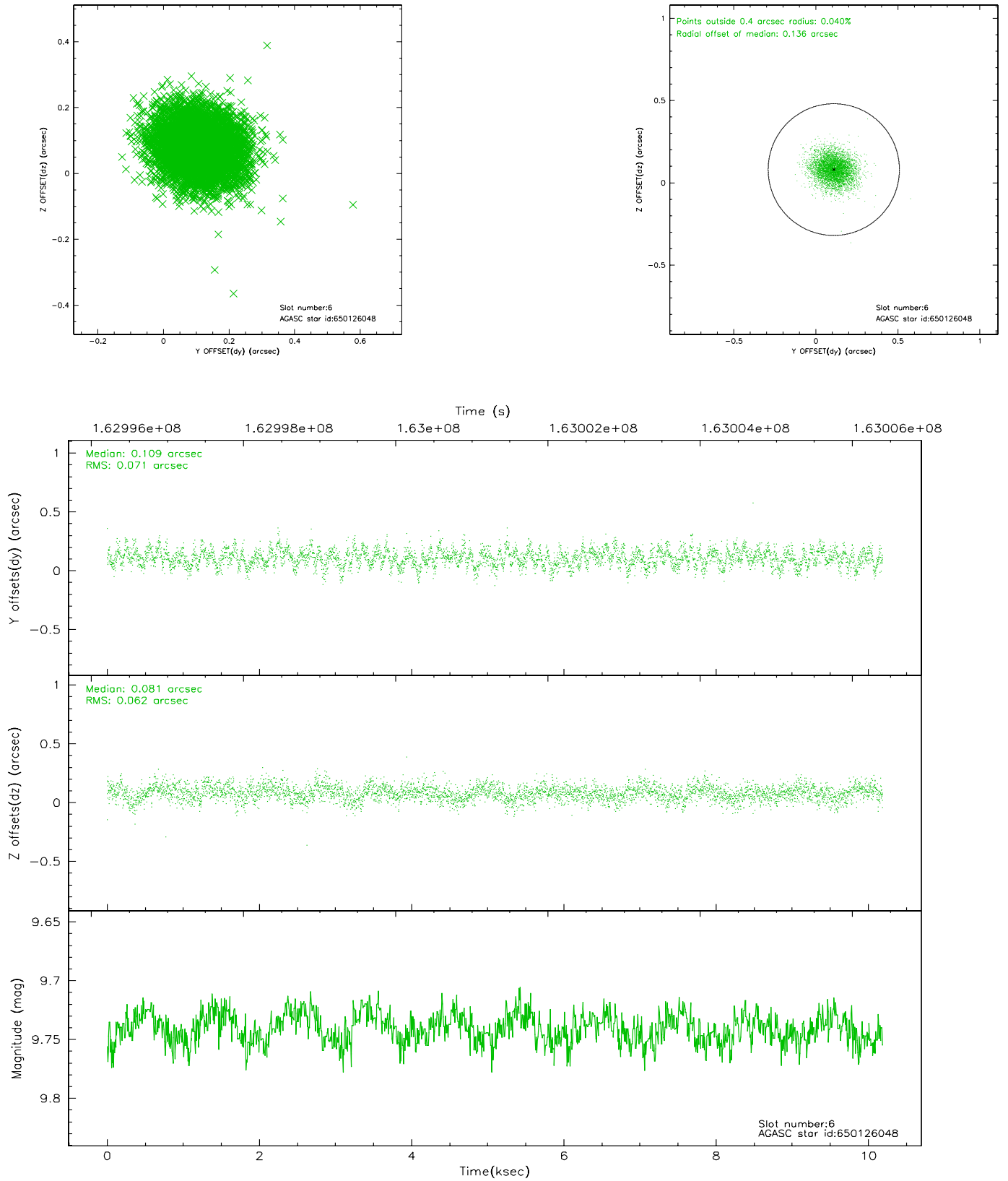
## 2.4.2 Slot 4



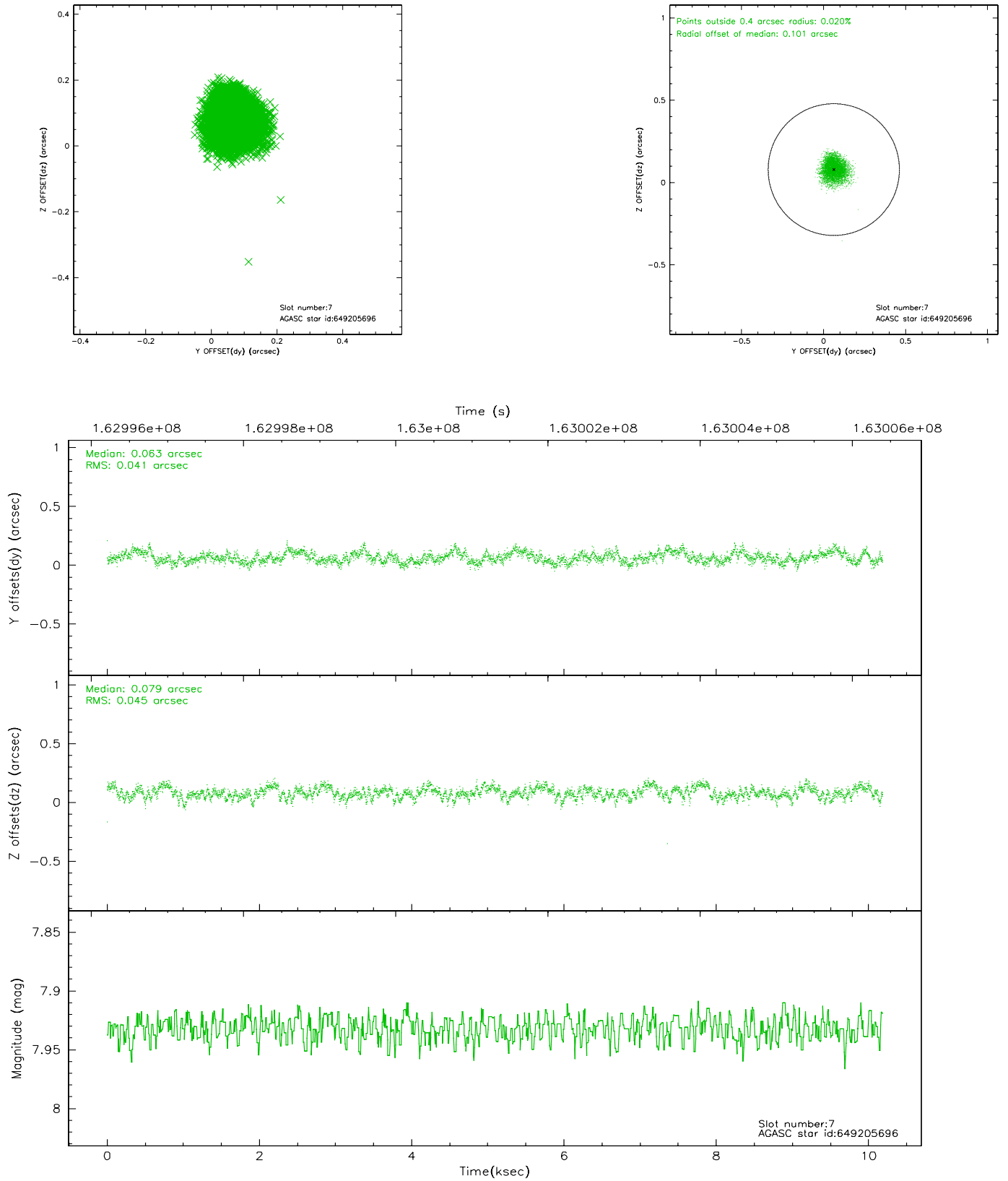
### 2.4.3 Slot 5



## 2.4.4 Slot 6

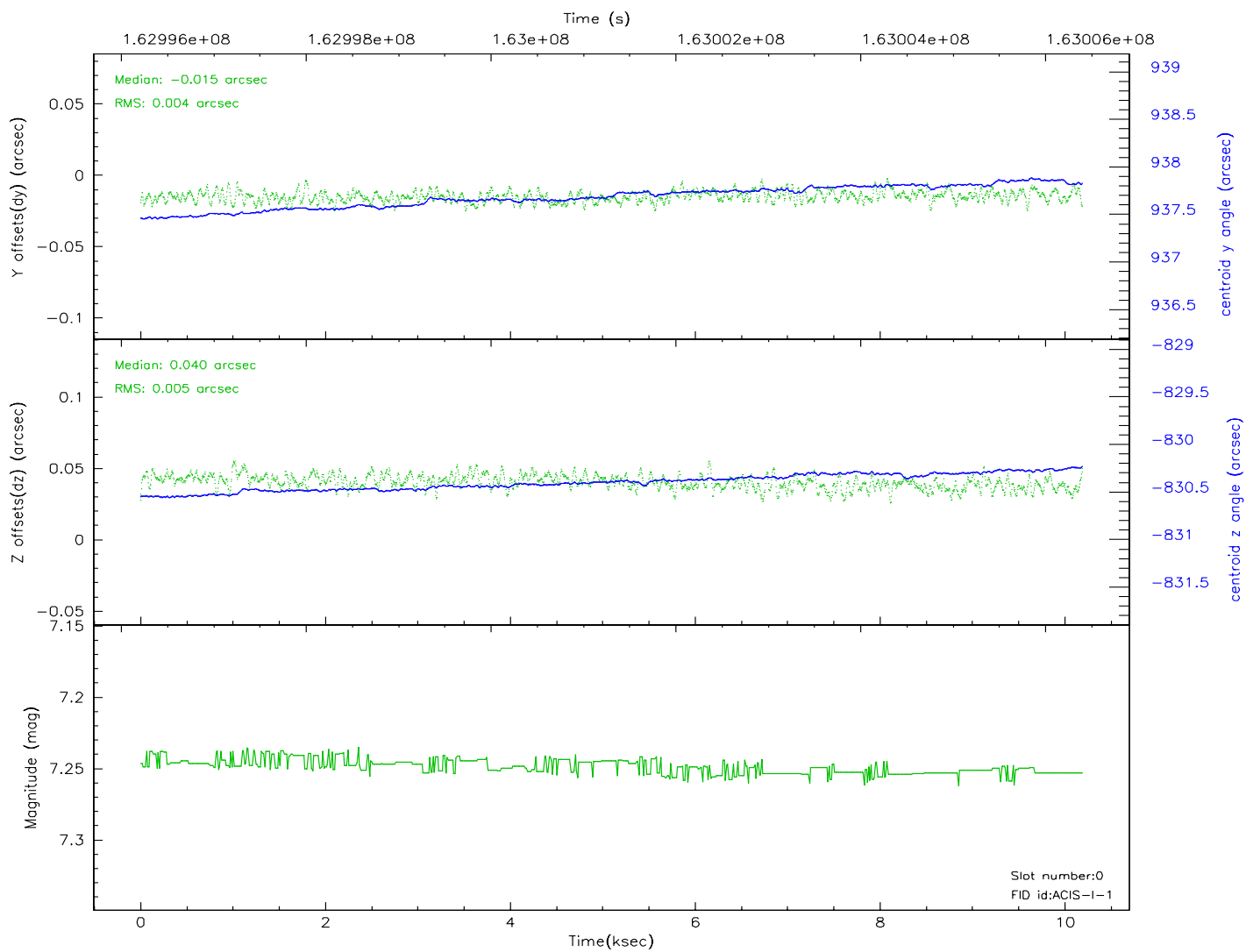
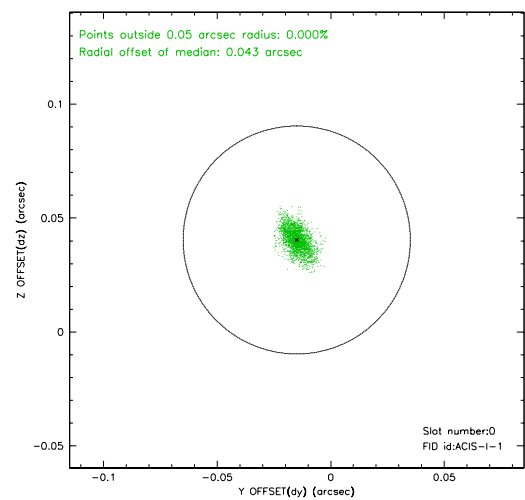
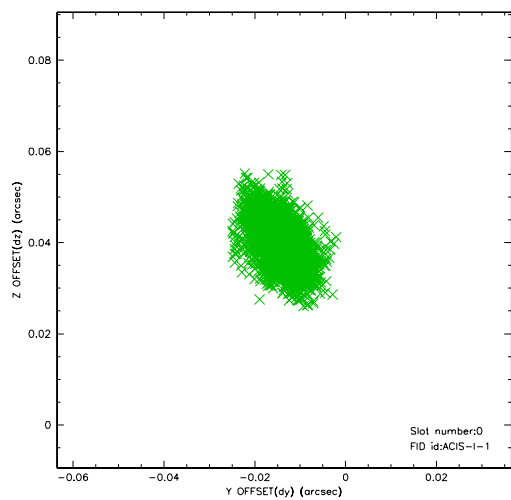


## 2.4.5 Slot 7

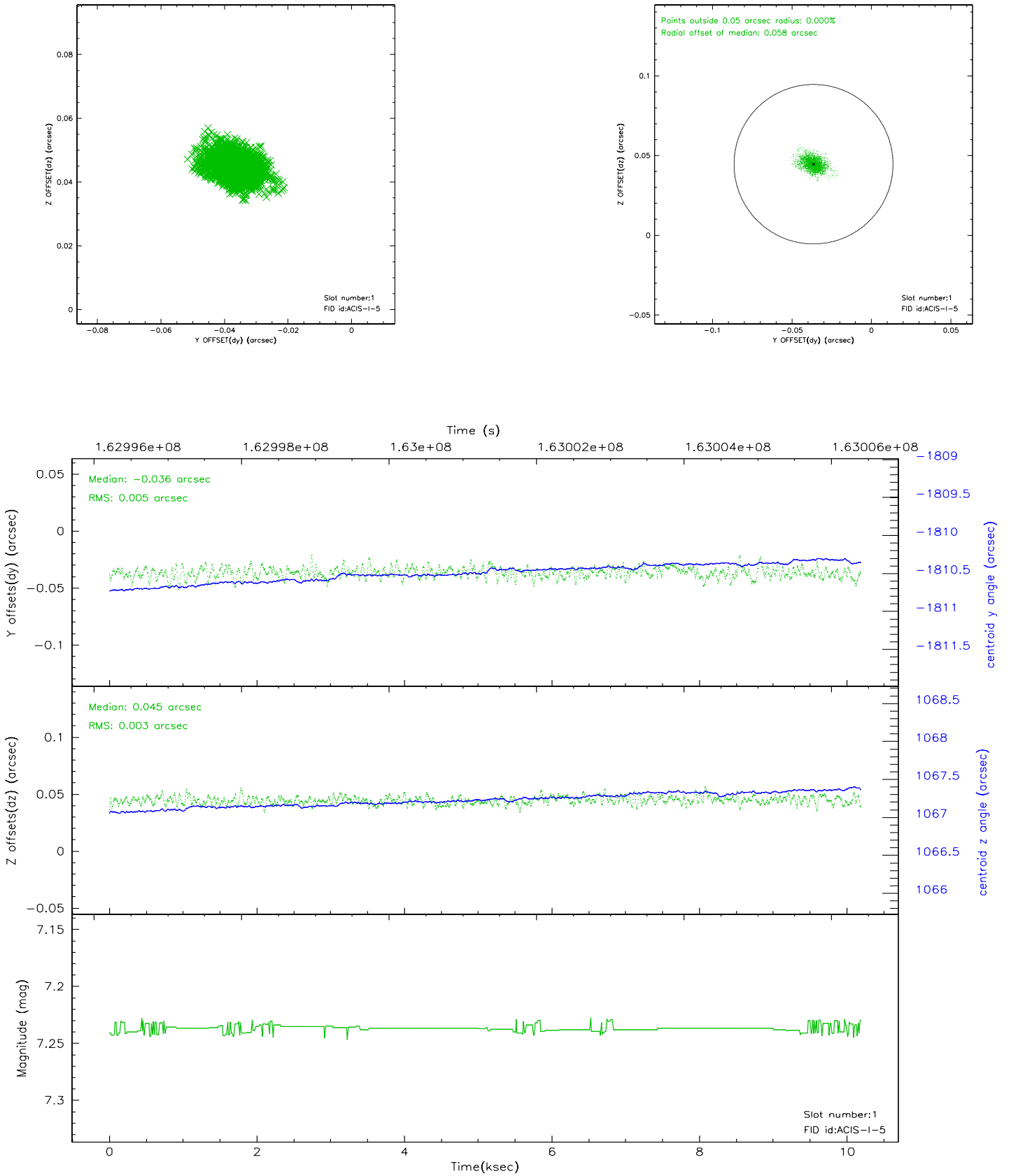


## 2.5 FID Slots

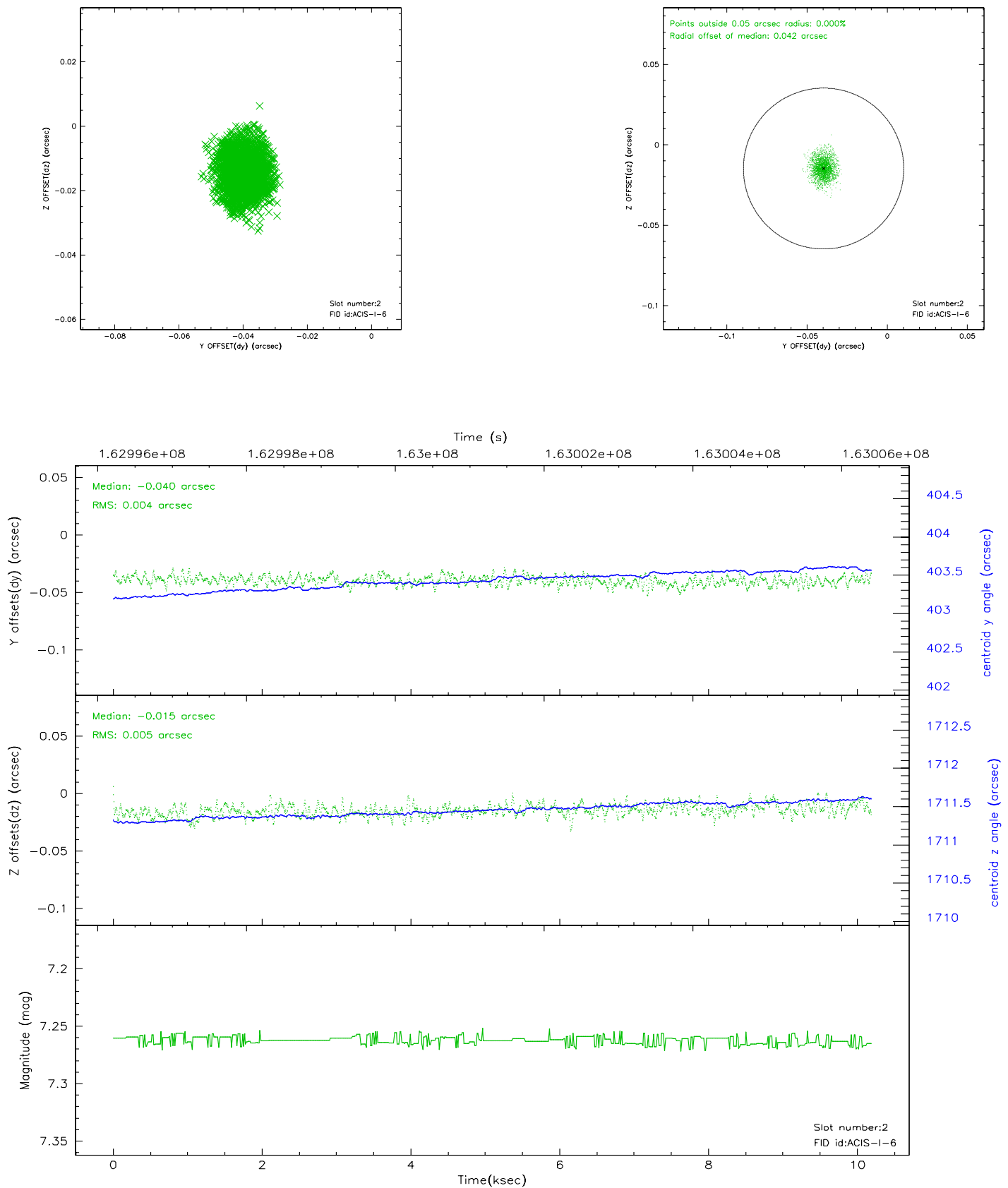
### 2.5.1 Slot 0



## 2.5.2 Slot 1

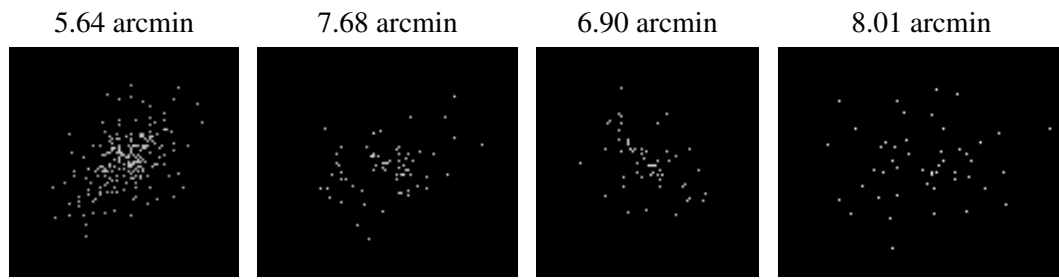


### 2.5.3 Slot 2





### 3 Point Sources



## A Summary

### A.1 Status

V&V Scientist	Beth Sundheim
V&V Date (YYYY-MM-DD)	2006.07.23
V&V Edition	1
V&V Disposition and Status	OK
V&V Charge Time	9.774

### A.2 Comments