

V&V Reference Report

L2 ASCDS Version : 7.6.8

Observation 4025 - L2 Version 001
Chandra X-Ray Center

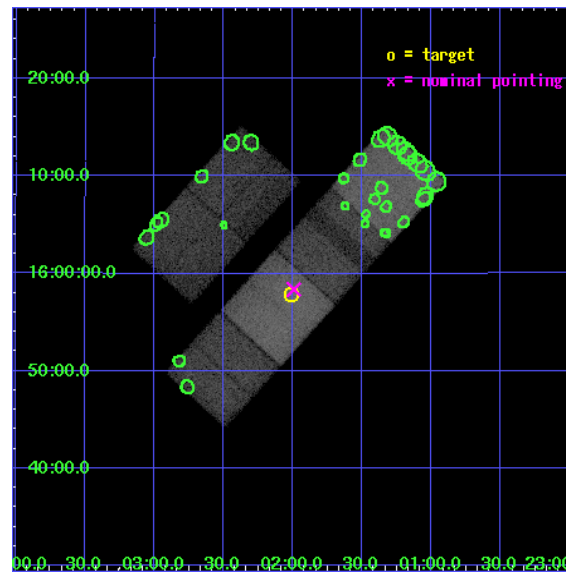
L2 Processing Date : Jul 12 2006

Contents

1	Front	2
2	OBI	3
2.1	OBI	3
2.1.1	Images	3
2.1.2	Bias	3
2.1.3	Parameters	4
2.1.4	Events	4
2.2	Compared Parameters	5
2.3	Aspect	6
2.4	Star Slots	9
2.4.1	Slot 3	9
2.4.2	Slot 4	10
2.4.3	Slot 5	11
2.4.4	Slot 6	12
2.4.5	Slot 7	13
2.5	FID Slots	14
2.5.1	Slot 0	14
2.5.2	Slot 1	15
2.5.3	Slot 2	16
3	Point Sources	17
A	Summary	18
A.1	Status	18
A.2	Comments	18

1 Front

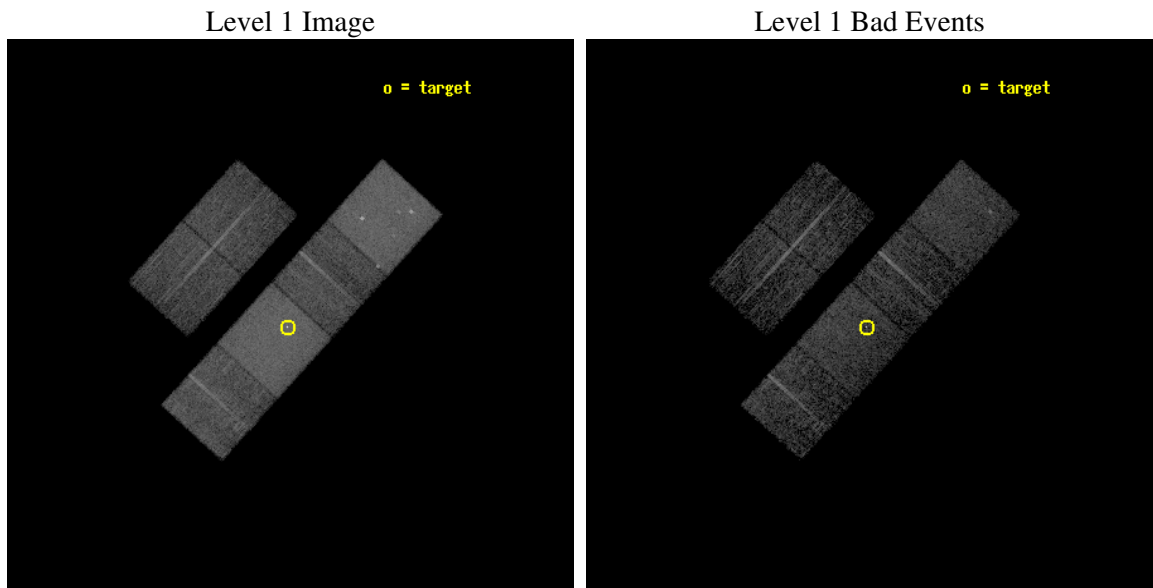
seq_num	700704
obs_id	4025
title	A CHANDRA SURVEY OF INFRARED-BRIGHT LINER GALAXIES
observer	Dr. Shobita Satyapal
object	NGC7465
dtcycle	0
cycle	P
ra_targ	345.50375
dec_targ	15.964722
ra_nom	345.49830411163
dec_nom	15.972840308483
roll_nom	132.24712181185
revision	2
ontime	5059.199981153
livetime	4995.1373447072
ontime2	5059.199981153
ontime3	5059.199981153
ontime5	5059.199981153
ontime6	5059.199981153
ontime7	5059.199981153
ontime8	5059.199981153
l2events	193262



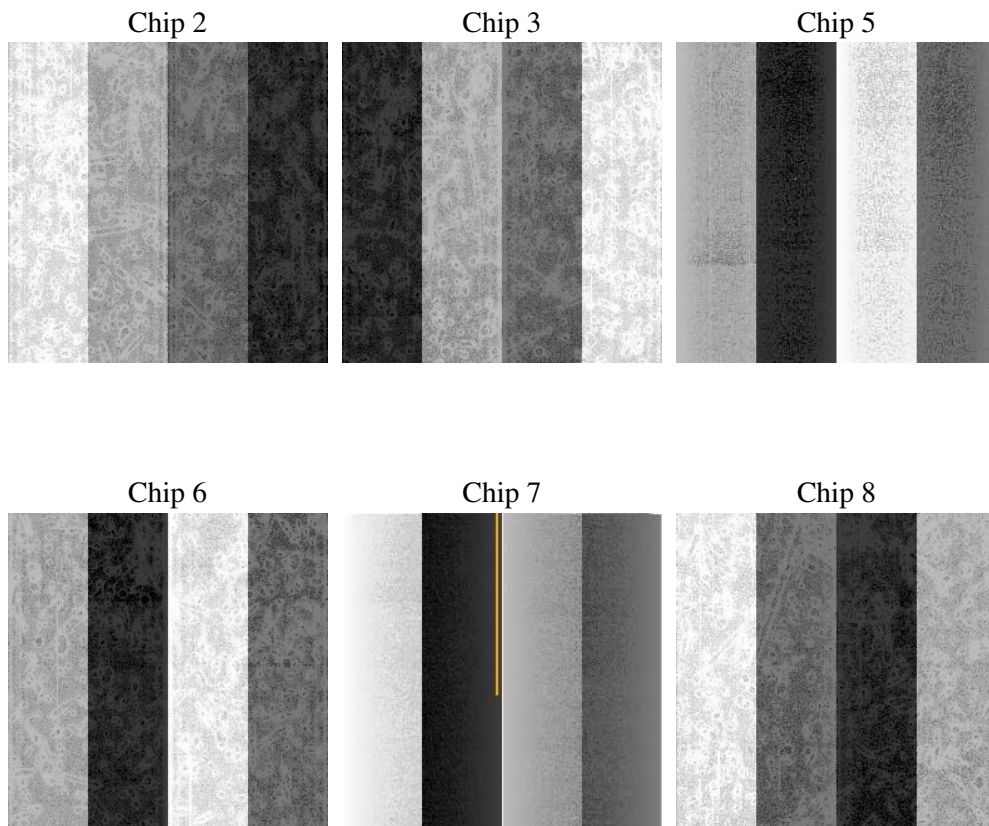
2 OBI

2.1 OBI

2.1.1 Images



2.1.2 Bias



2.1.3 Parameters

obi_num	0
ascdsver	7.6.8
caldsver	3.2.2
date	2006-07-12T14:47:18
revision	2

sched_exp_time	5097.000000
ontime	5062.4496659935
ontime2	5062.4496659935
ontime3	5062.4496659935
ontime5	5062.4496659935
ontime6	5062.4496659935
ontime7	5062.4496659935
ontime8	5062.4496659935
l1events	389923

2.1.4 Events

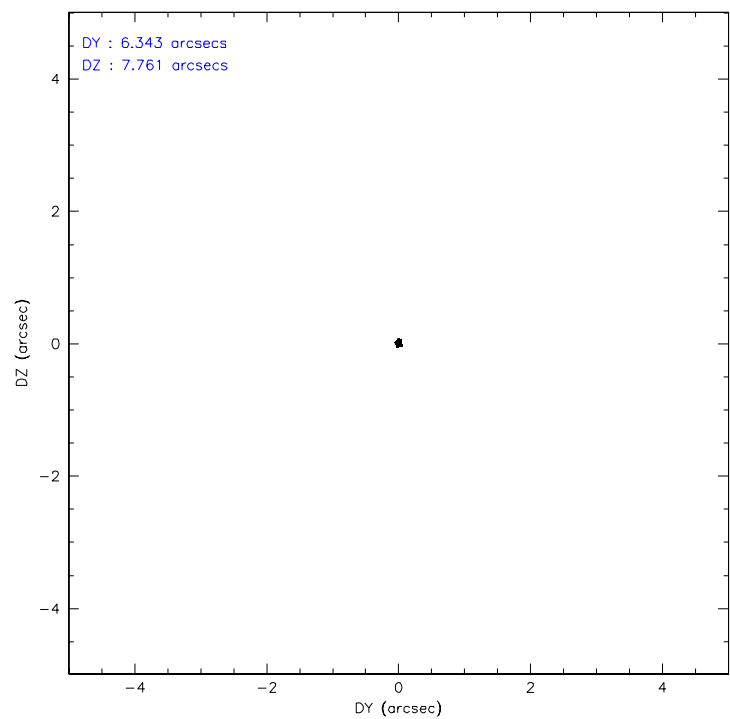
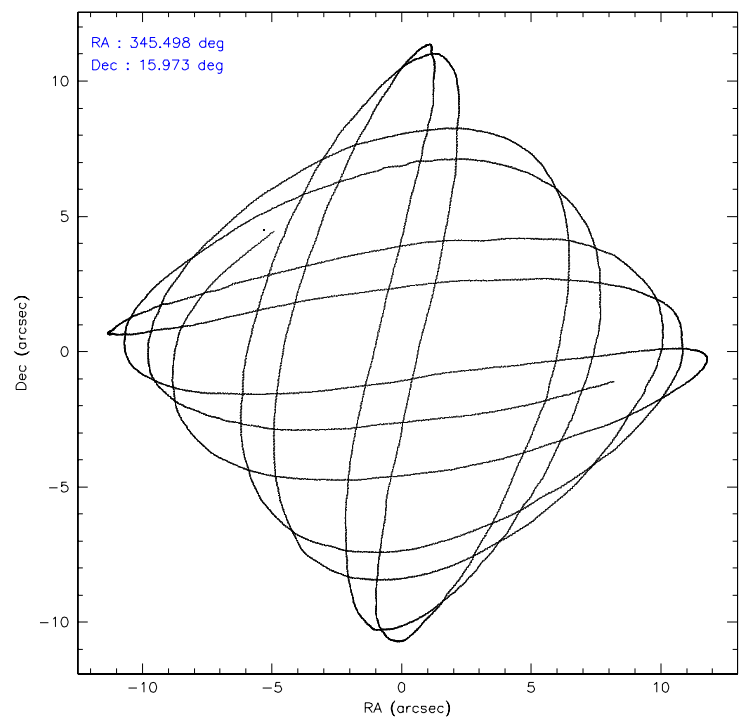
	ccd 2	ccd 3	ccd 5	ccd 6	ccd 7	ccd 8
level 1 events	46853	45854	92589	53011	90673	60943
rejected events	28222	27186	33382	29237	33035	30541
rejected %	60%	59%	36%	55%	36%	50%

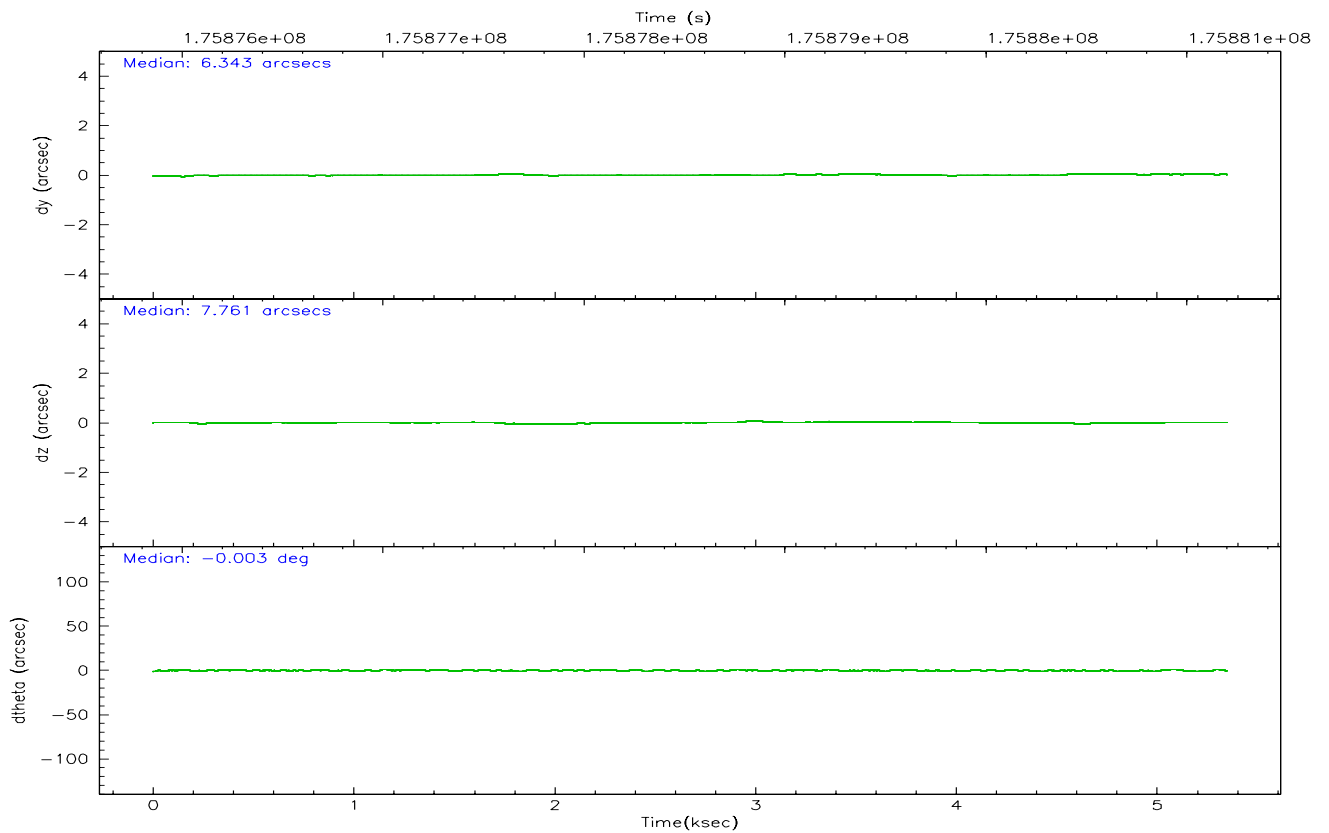
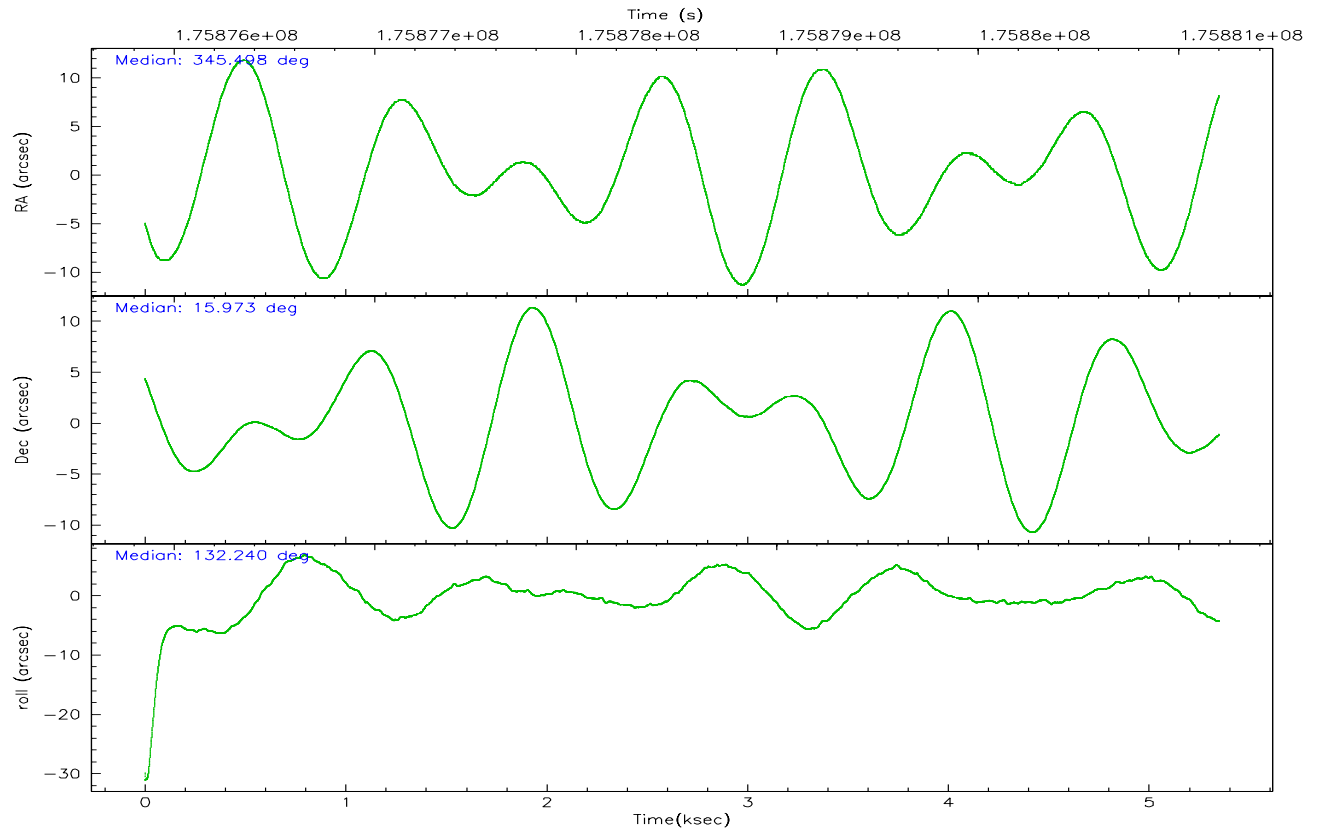
	ccd 2	ccd 3	ccd 5	ccd 6	ccd 7	ccd 8
grade 0 events	12509	12167	6444	15471	4922	18466
	26%	26%	6%	29%	5%	30%
grade 1 events	54	71	94	66	57	89
	0%	0%	0%	0%	0%	0%
grade 2 events	2866	3247	18885	4689	11756	5237
	6%	7%	20%	8%	12%	8%
grade 3 events	803	771	1967	824	3036	1726
	1%	1%	2%	1%	3%	2%
grade 4 events	796	826	1724	815	3029	1594
	1%	1%	1%	1%	3%	2%
grade 5 events	1234	1357	2749	1485	3182	1891
	2%	2%	2%	2%	3%	3%
grade 6 events	1659	1662	30240	1987	34937	3395
	3%	3%	32%	3%	38%	5%
grade 7 events	26932	25753	30486	27674	29754	28545
	57%	56%	32%	52%	32%	46%

2.2 Compared Parameters

Parameter	Planned	Actual	Parameter	Planned	Actual
Instrument	ACIS	ACIS	Obspar format version number	6	6
Detector	ACIS-235678	ACIS-235678	Obspar file type	PREDICTED	ACTUAL
Grating	NONE	NONE	Obspar update status	NONE	UPDATED
Data mode	FAINT	FAINT	On-chip summing requested	N	N
Observation mode	POINTING	POINTING	Subarray requested	NONE	NONE
Pointing RA	345.525484	345.498304111633	Alternating exposures requested	N	N
Pointing Dec	15.964960	15.97284030848286	Primary exposure time	0.000000	3.2
Pointing Roll	132.083008	132.2471218118509			
SIM focus pos (mm)	-0.684267	-0.6828225247311905			
SIM defocus (mm)	0	0.001444936568705701			
SIM translation stage pos (mm)	-190.132523	-190.1400660498719			
SIM translation stage offset (mm)	0	0.00754346686406393			
Observation start time	175876109.184000	175875111.78212			
Observation start date	2003-07-29T14:27:25	2003-07-29T14:11:51			
Observation end time	175881206.184000	175881623.6074			
Observation end date	2003-07-29T15:52:22	2003-07-29T16:00:23			
Read mode	TIMED	TIMED			

2.3 Aspect



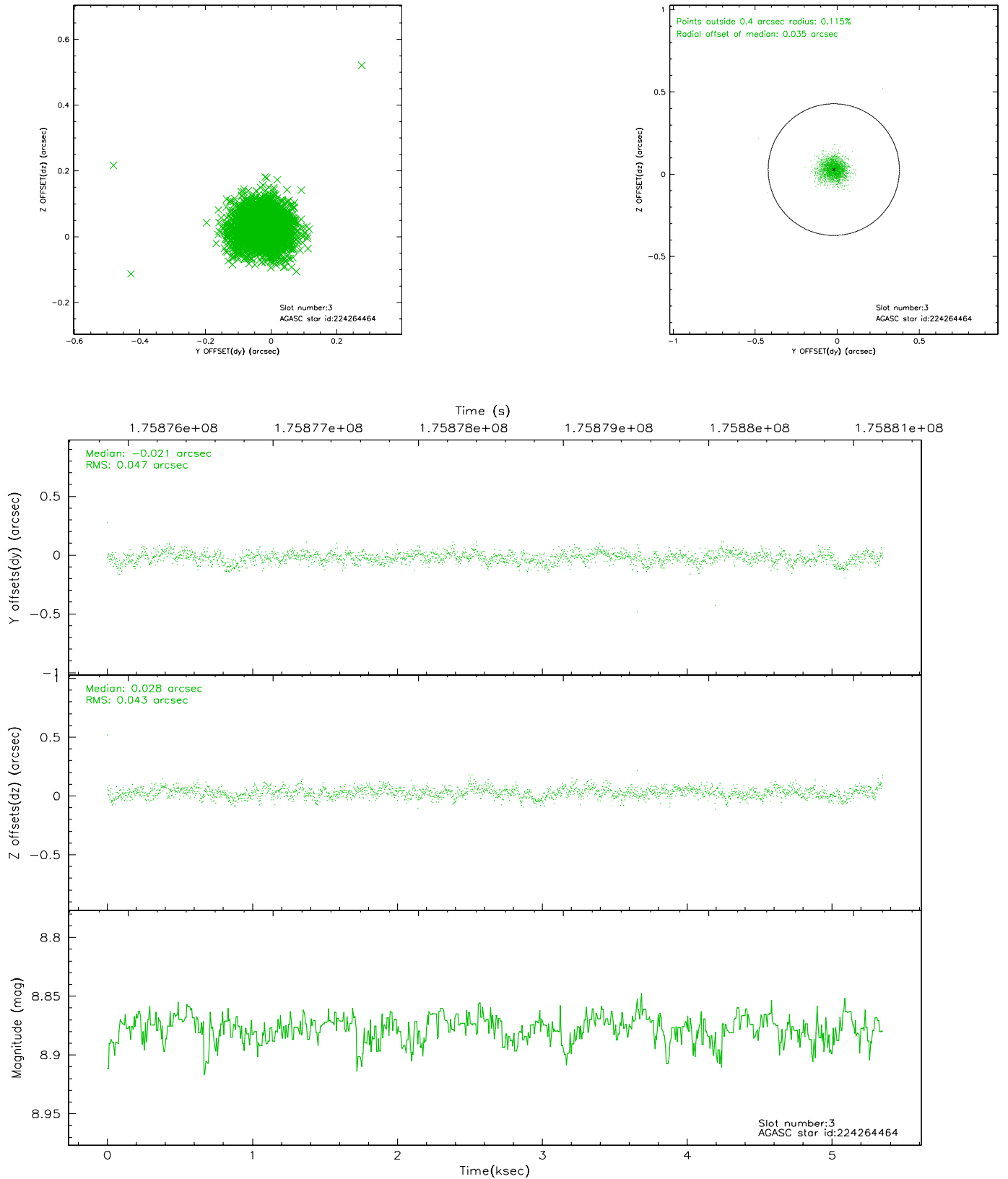


Slot Statistics

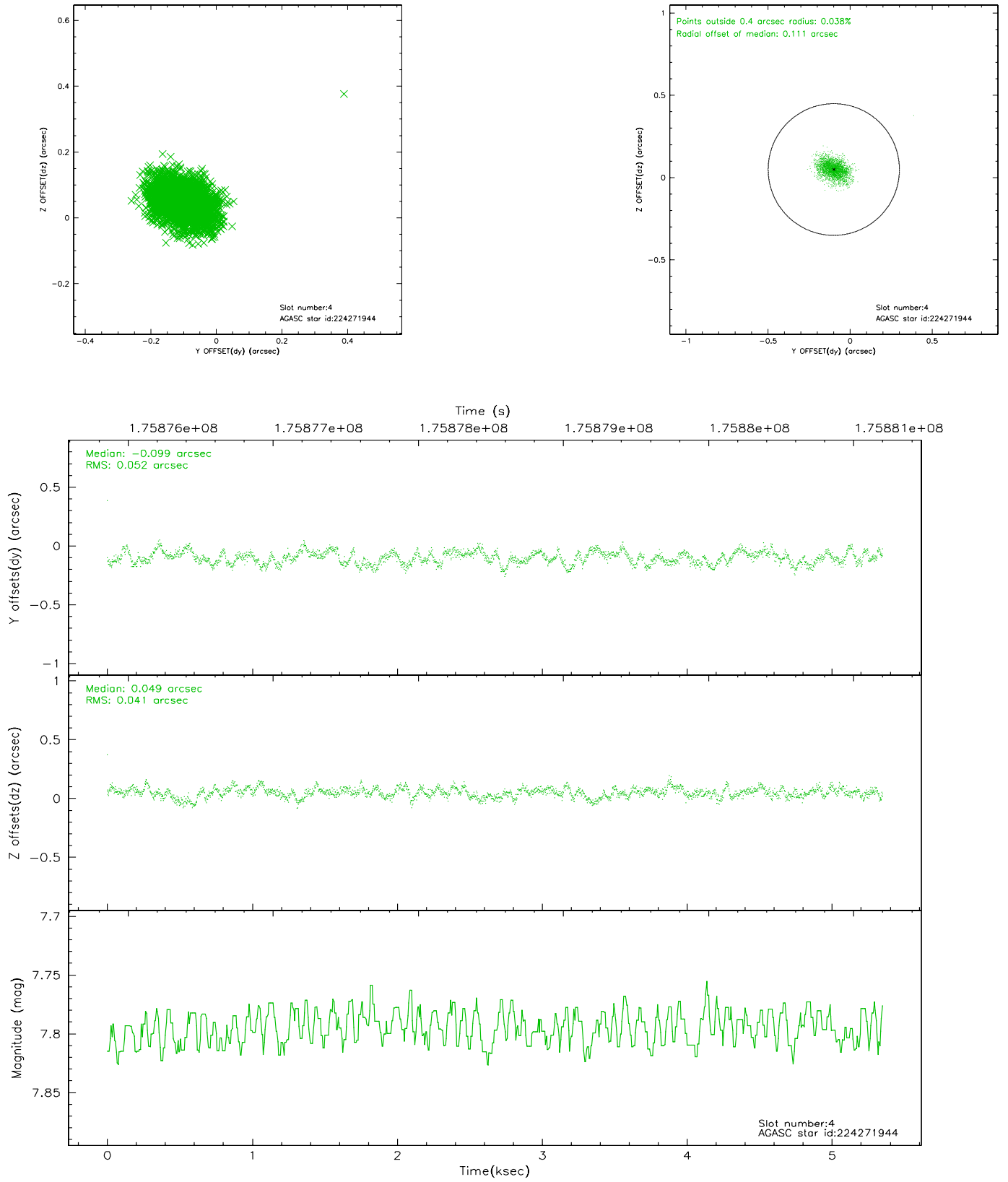
slot	status	id	mag	n_pts	med_dy	med_dz	dr1	dr2	ra	dec	mean_y	mean_z
0	FID	ACIS-S-2	7.10	1305	-0.015	-0.012	0.007	0.011	0.000000	0.000000	-759.12	-1728.95
1	FID	ACIS-S-4	7.21	1305	0.008	0.011	0.005	0.008	0.000000	0.000000	2153.69	178.35
2	FID	ACIS-S-5	7.23	1306	-0.024	0.010	0.007	0.010	0.000000	0.000000	-1810.50	173.36
3	GUIDE	224264464	8.88	2608	-0.021	0.028	0.065	0.109	345.354351	16.397716	1552.71	-605.60
4	GUIDE	224271944	7.79	2610	-0.099	0.049	0.069	0.112	345.743362	16.457660	813.32	-1747.58
5	GUIDE	224272040	7.79	2611	0.064	-0.162	0.055	0.086	345.211537	15.677856	-36.87	1498.73
6	GUIDE	224278552	9.50	2610	-0.071	-0.144	0.081	0.133	345.572738	15.370296	-1698.88	1313.20
7	GUIDE	224275336	9.23	2609	0.132	0.230	0.072	0.117	345.976067	15.905568	-1203.25	-1015.14

2.4 Star Slots

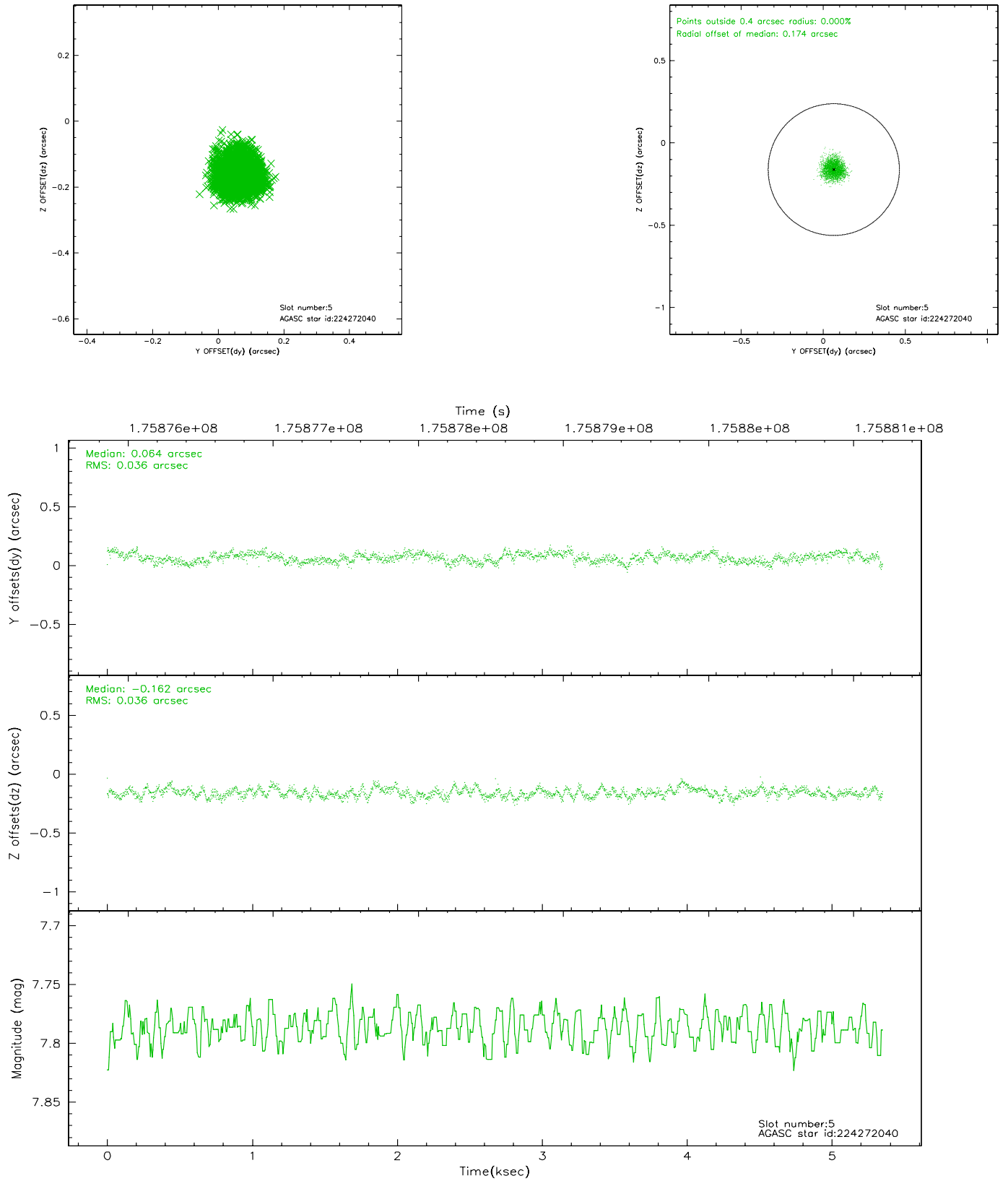
2.4.1 Slot 3



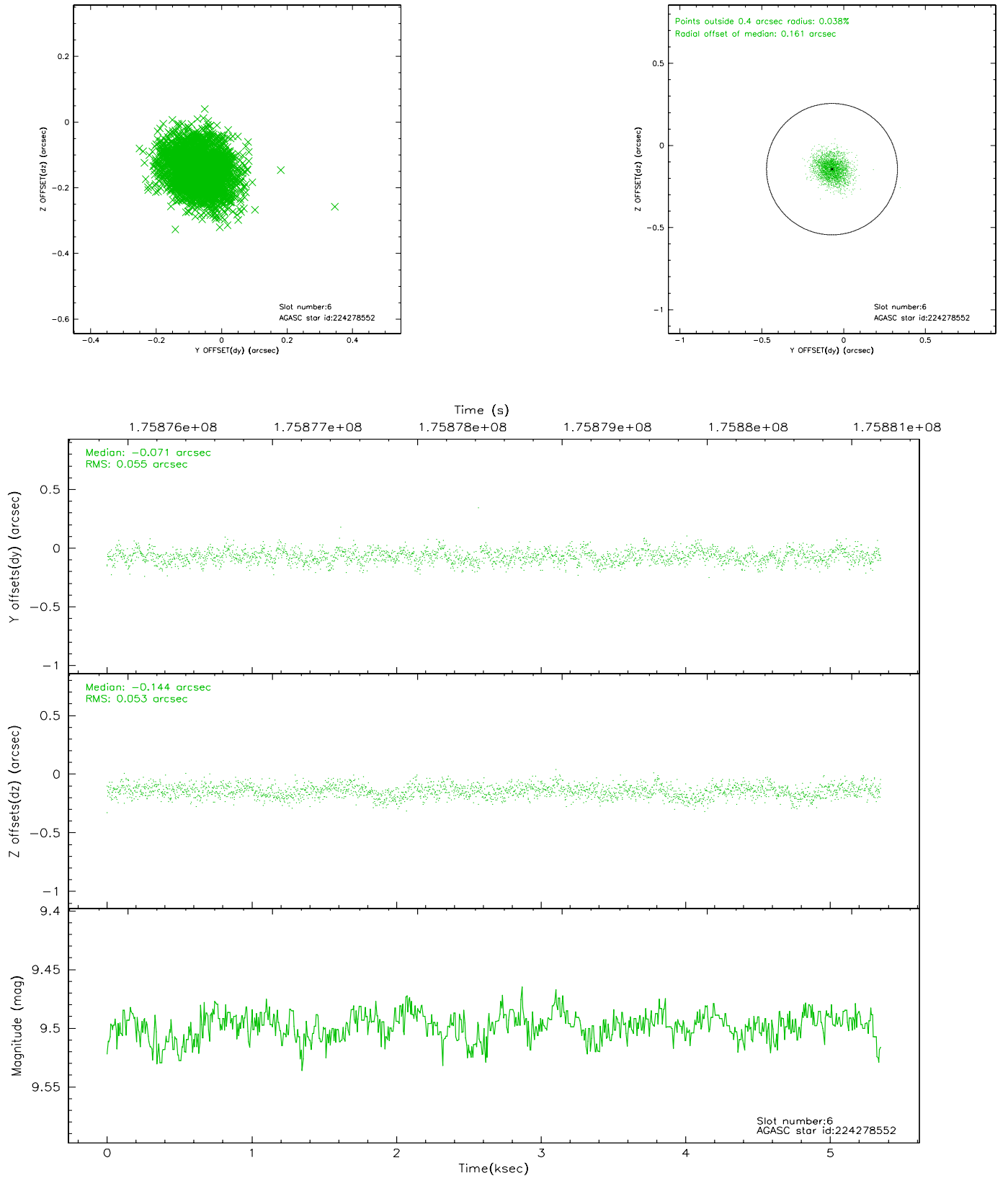
2.4.2 Slot 4



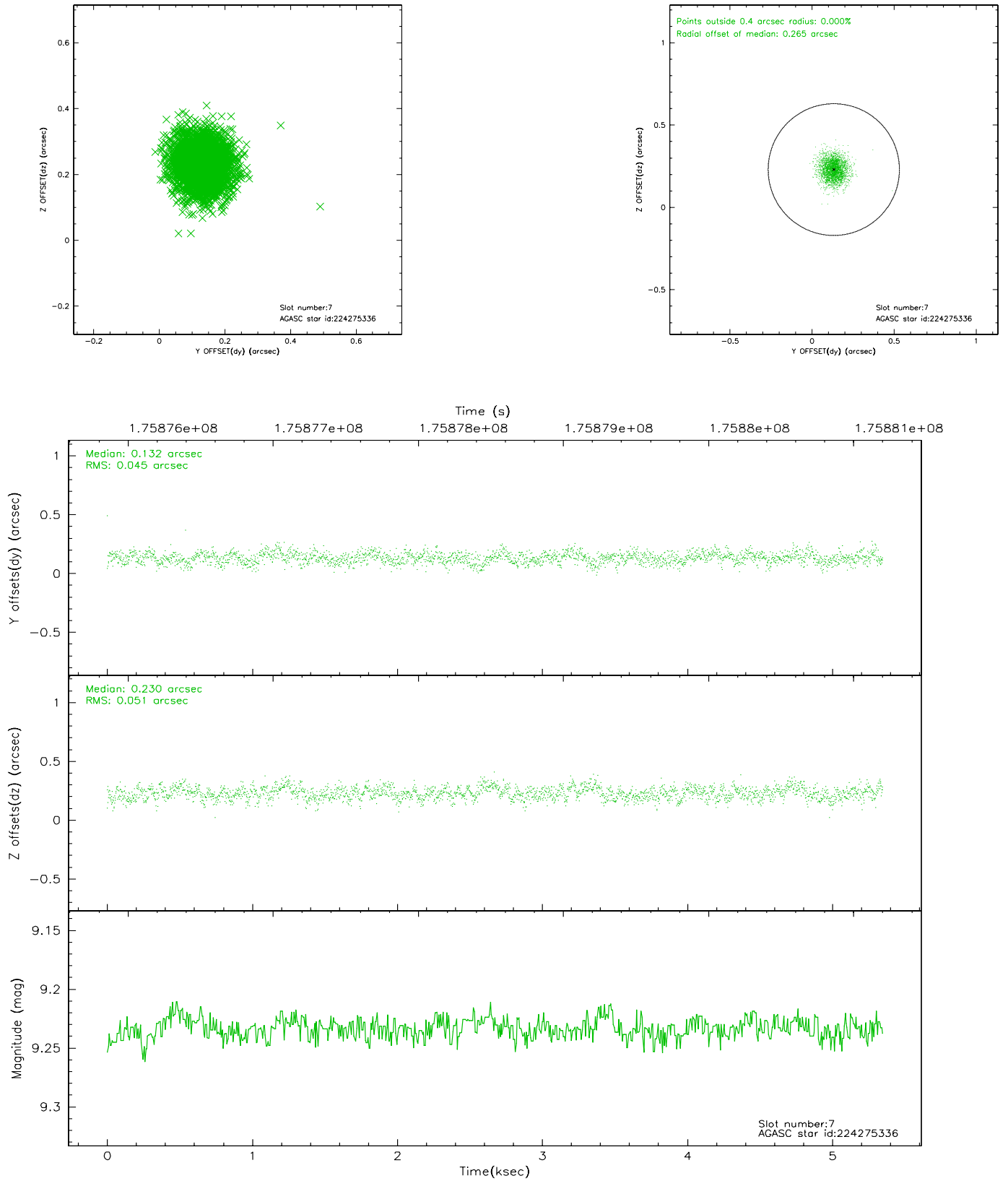
2.4.3 Slot 5



2.4.4 Slot 6

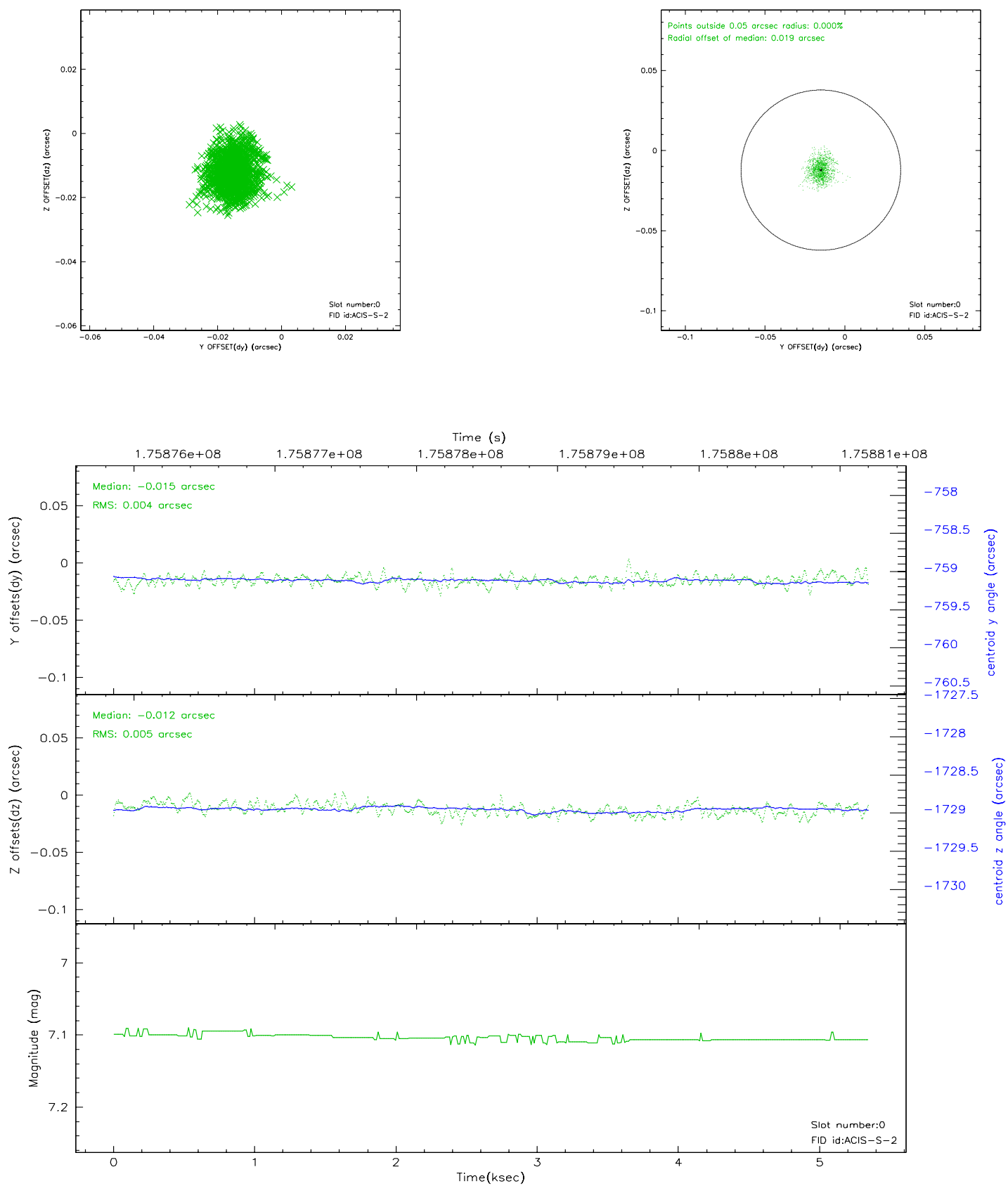


2.4.5 Slot 7

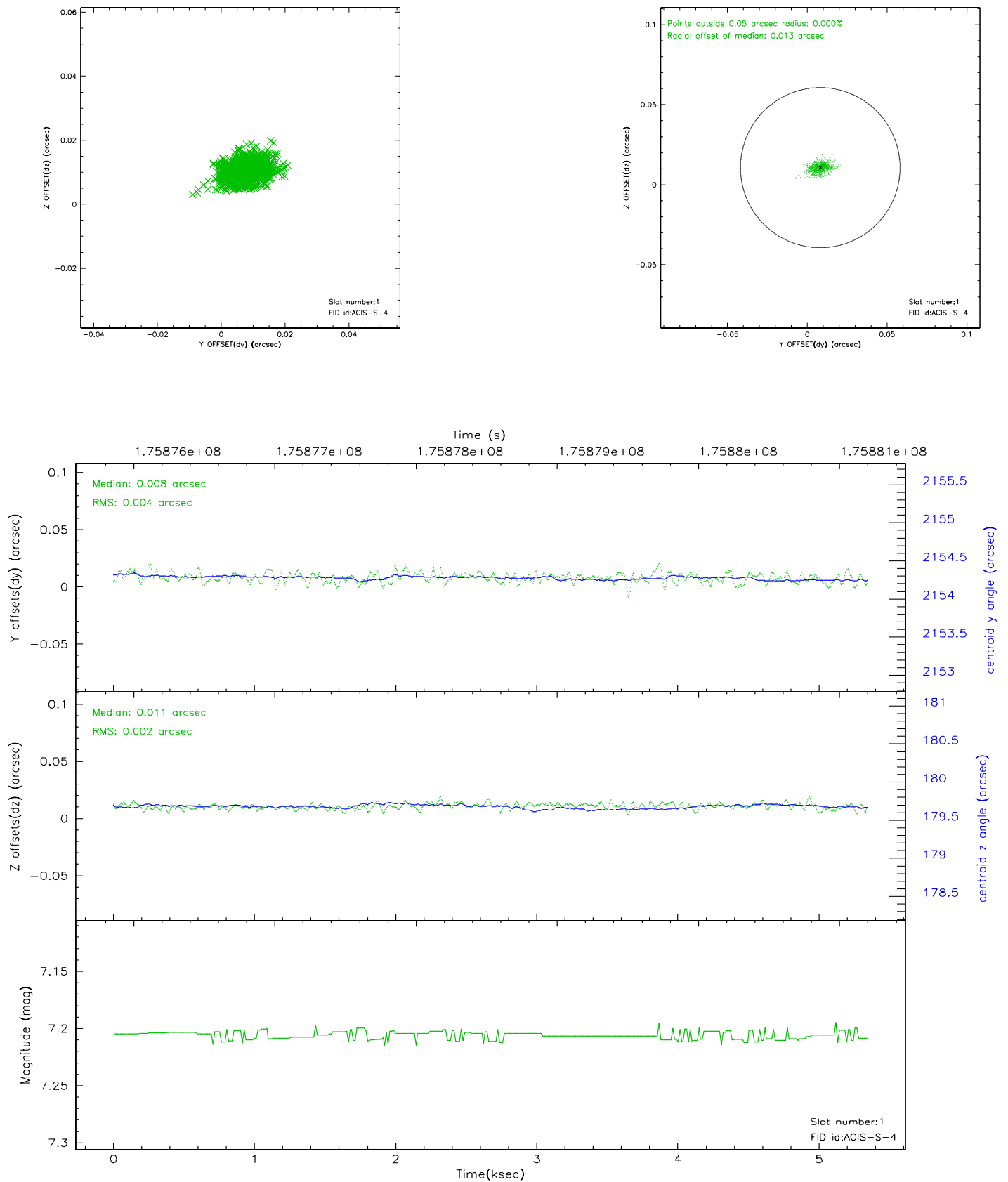


2.5 FID Slots

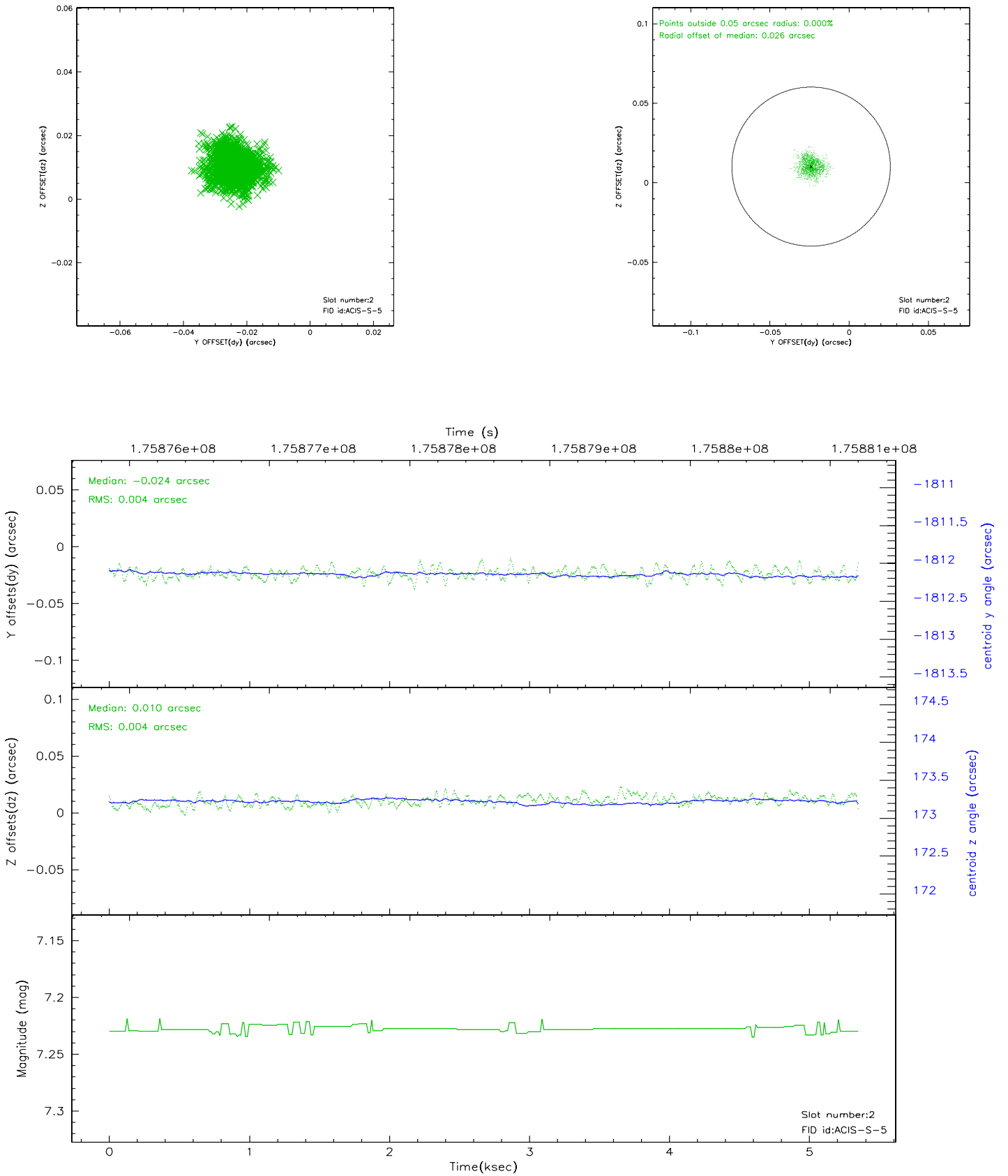
2.5.1 Slot 0



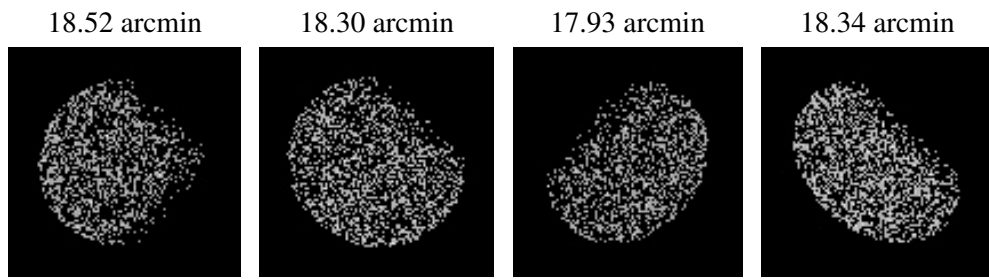
2.5.2 Slot 1



2.5.3 Slot 2



3 Point Sources



A Summary

A.1 Status

V&V Scientist	Beth Sundheim
V&V Date (YYYY-MM-DD)	2006.07.12
V&V Edition	1
V&V Disposition and Status	OK
V&V Charge Time	5.06

A.2 Comments