

V&V Reference Report

L2 ASCDS Version : 7.6.8

Observation 3995 - L2 Version 001
Chandra X-Ray Center

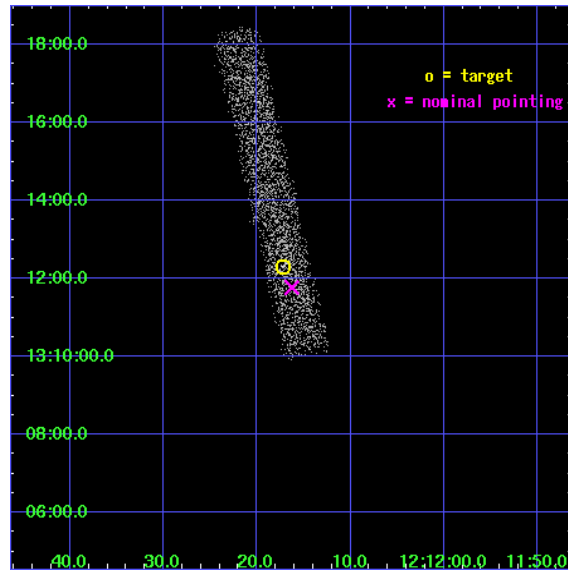
L2 Processing Date : Jul 12 2006

Contents

1	Front	2
2	OBI	3
2.1	OBI	3
2.1.1	Images	3
2.1.2	Bias	3
2.1.3	Parameters	4
2.1.4	Events	4
2.2	Compared Parameters	5
2.3	Aspect	6
2.4	Star Slots	9
2.4.1	Slot 3	9
2.4.2	Slot 4	10
2.4.3	Slot 5	11
2.4.4	Slot 6	12
2.4.5	Slot 7	13
2.5	FID Slots	14
2.5.1	Slot 0	14
2.5.2	Slot 1	15
2.5.3	Slot 2	16
3	Point Sources	17
A	Summary	18
A.1	Status	18
A.2	Comments	18

1 Front

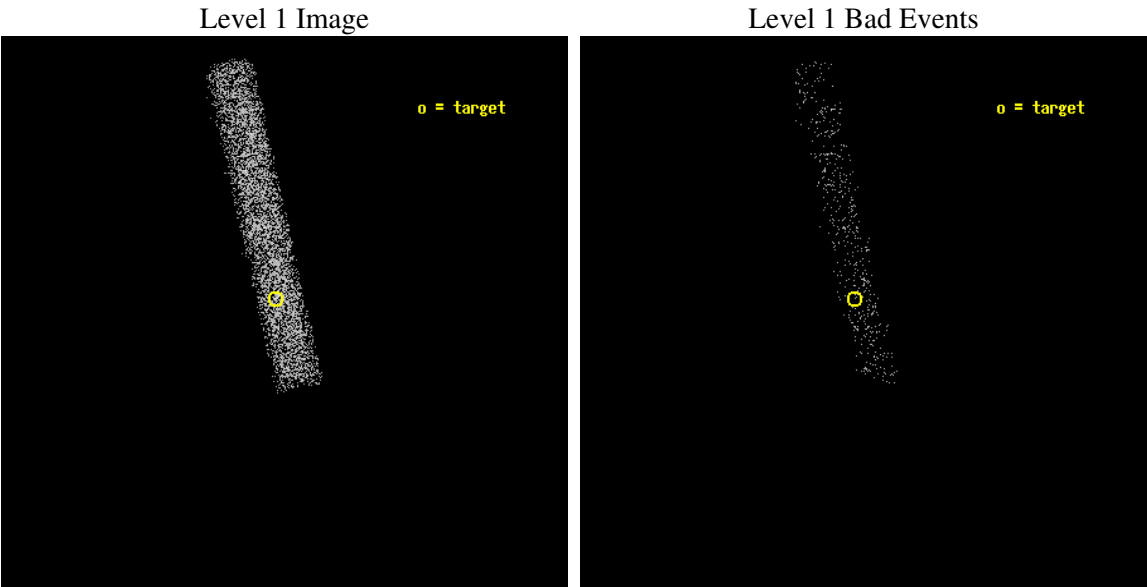
seq_num	700674
obs_id	3995
title	AN X-RAY SURVEY OF RADIO-SELECTED LOW-LUMINOSITY AGNS
observer	Dr. Yuichi Terashima
object	NGC 4168
dtcycle	0
cycle	P
ra_targ	183.071667
dec_targ	13.205194
ra_nom	183.06785910948
dec_nom	13.196217384923
roll_nom	257.26671063702
revision	2
ontime	5136.2359464169
livetime	4658.2948906375
ontime7	5136.2359464169
l2events	3535



2 OBI

2.1 OBI

2.1.1 Images



2.1.2 Bias

Chip 7



2.1.3 Parameters

obi_num	0
ascdsver	7.6.8
caldsver	3.2.2
date	2006-07-12T17:35:01
revision	2

sched_exp_time	4942.000000
ontime	5799.6042173803
ontime7	5799.6042173803
l1events	7821

2.1.4 Events

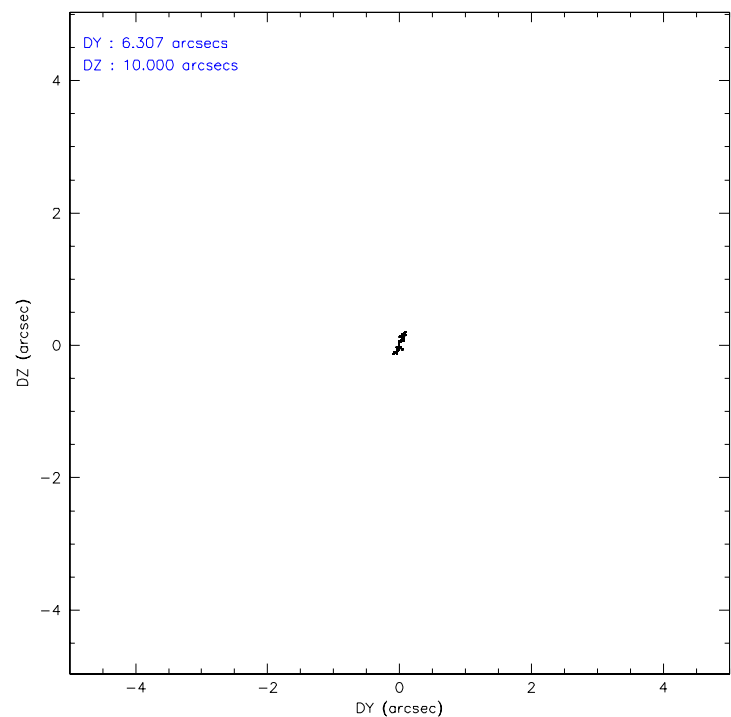
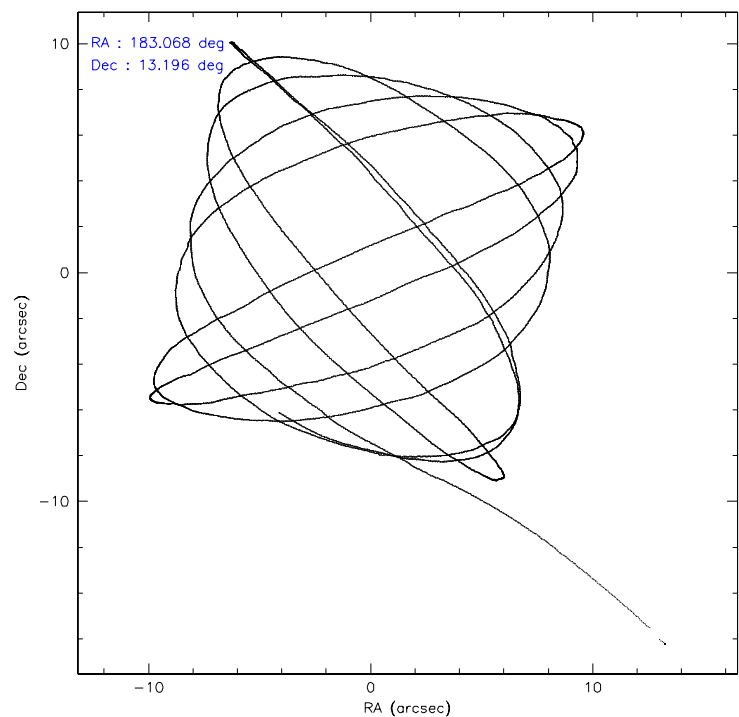
	ccd 7
level 1 events	7821
rejected events	4169
rejected %	53%

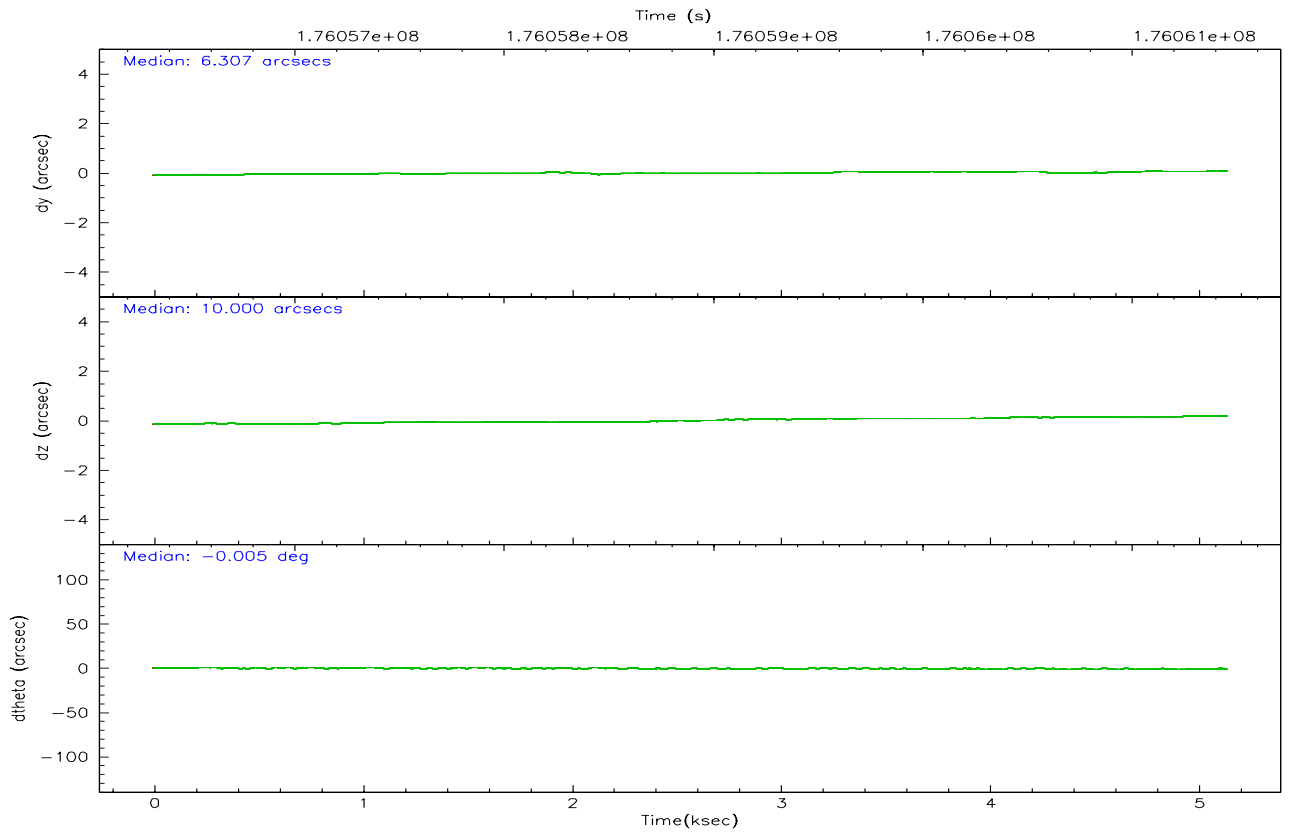
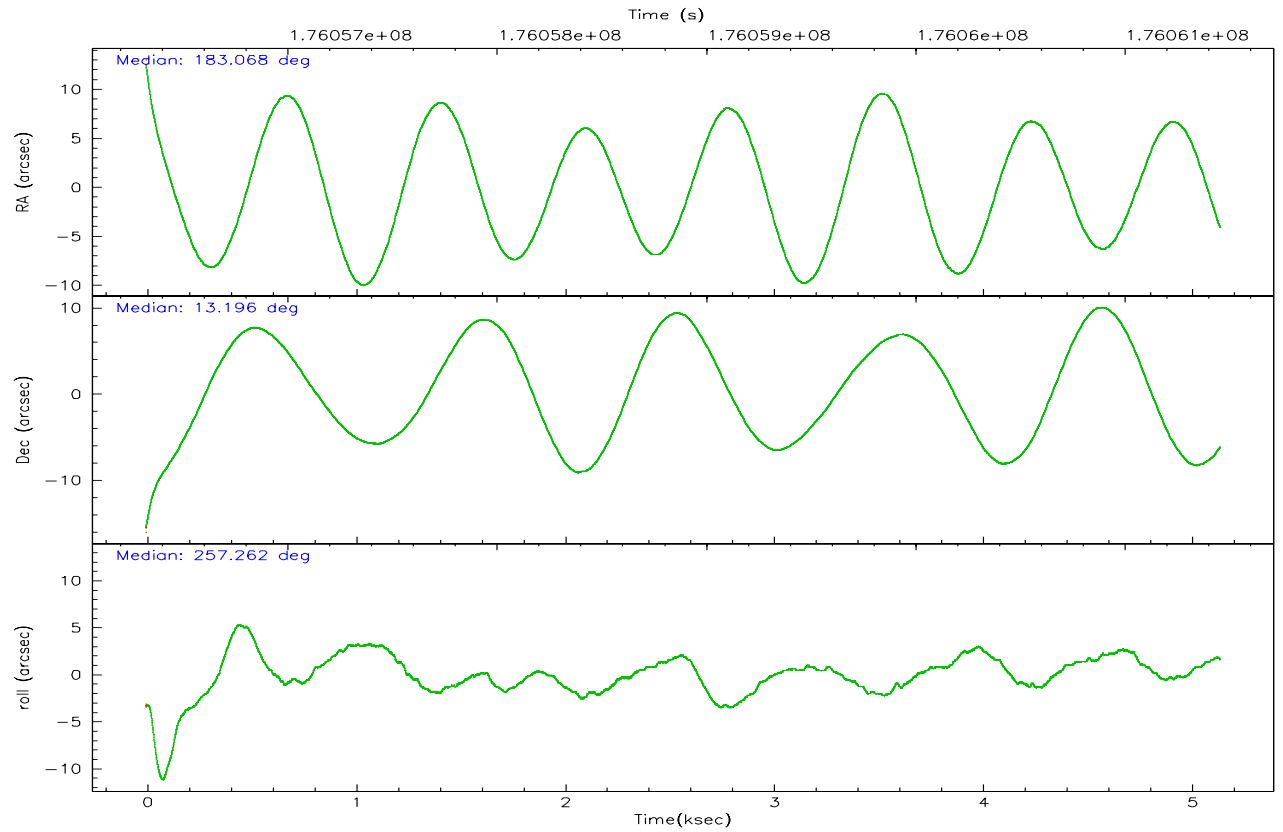
	ccd 7
grade 0 events	371
	4%
grade 1 events	6
	0%
grade 2 events	933
	11%
grade 3 events	368
	4%
grade 4 events	341
	4%
grade 5 events	482
	6%
grade 6 events	2189
	27%
grade 7 events	3131
	40%

2.2 Compared Parameters

Parameter	Planned	Actual	Parameter	Planned	Actual
Instrument	ACIS	ACIS	Obspar format version number	6	6
Detector	ACIS-7	ACIS-7	Obspar file type	PREDICTED	ACTUAL
Grating	NONE	NONE	Obspar update status	NONE	UPDATED
Data mode	VFAINT	VFAINT	On-chip summing requested	N	N
Observation mode	POINTING	POINTING	Subarray requested	1/8	1/8
Pointing RA	183.059155	183.067859109476	Subarray start row	0	449
Pointing Dec	13.222172	13.19621738492288	Subarray row count	1024	128
Pointing Roll	257.112049	257.2667106370242	Alternating exposures requested	N	N
SIM focus pos (mm)	-0.684267	-0.6828225247311905	Primary exposure time	0.000000	0.4
SIM defocus (mm)	0	0.001444936568705701			
SIM translation stage pos (mm)	-190.132523	-190.1400660498719			
SIM translation stage offset (mm)	0	0.00754346686406393			
Observation start time	176056509.184000	176055527.16481			
Observation start date	2003-07-31T16:34:05	2003-07-31T16:18:47			
Observation end time	176061451.184000	176062394.1526			
Observation end date	2003-07-31T17:56:27	2003-07-31T18:13:14			
Read mode	TIMED	TIMED			

2.3 Aspect



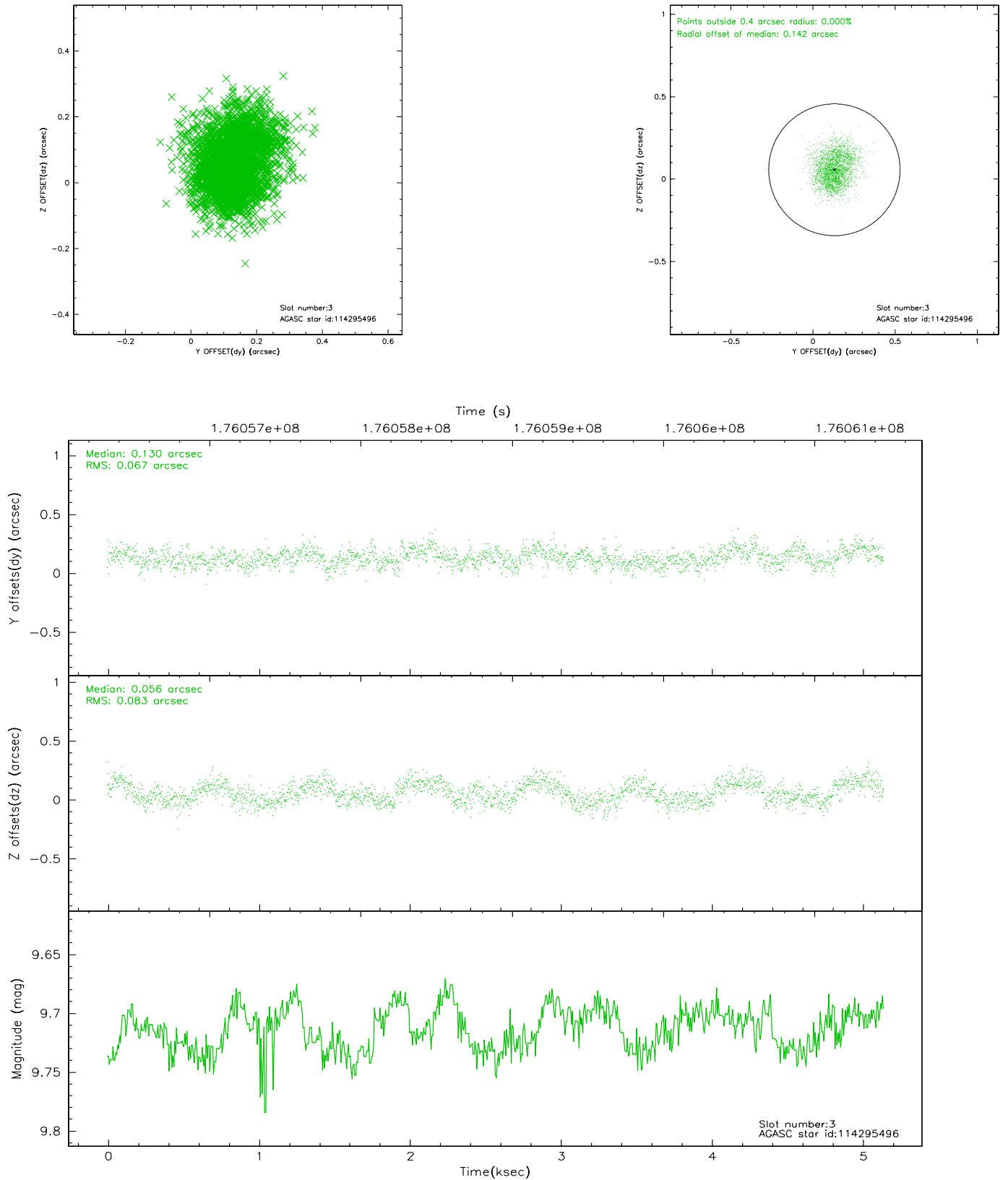


Slot Statistics

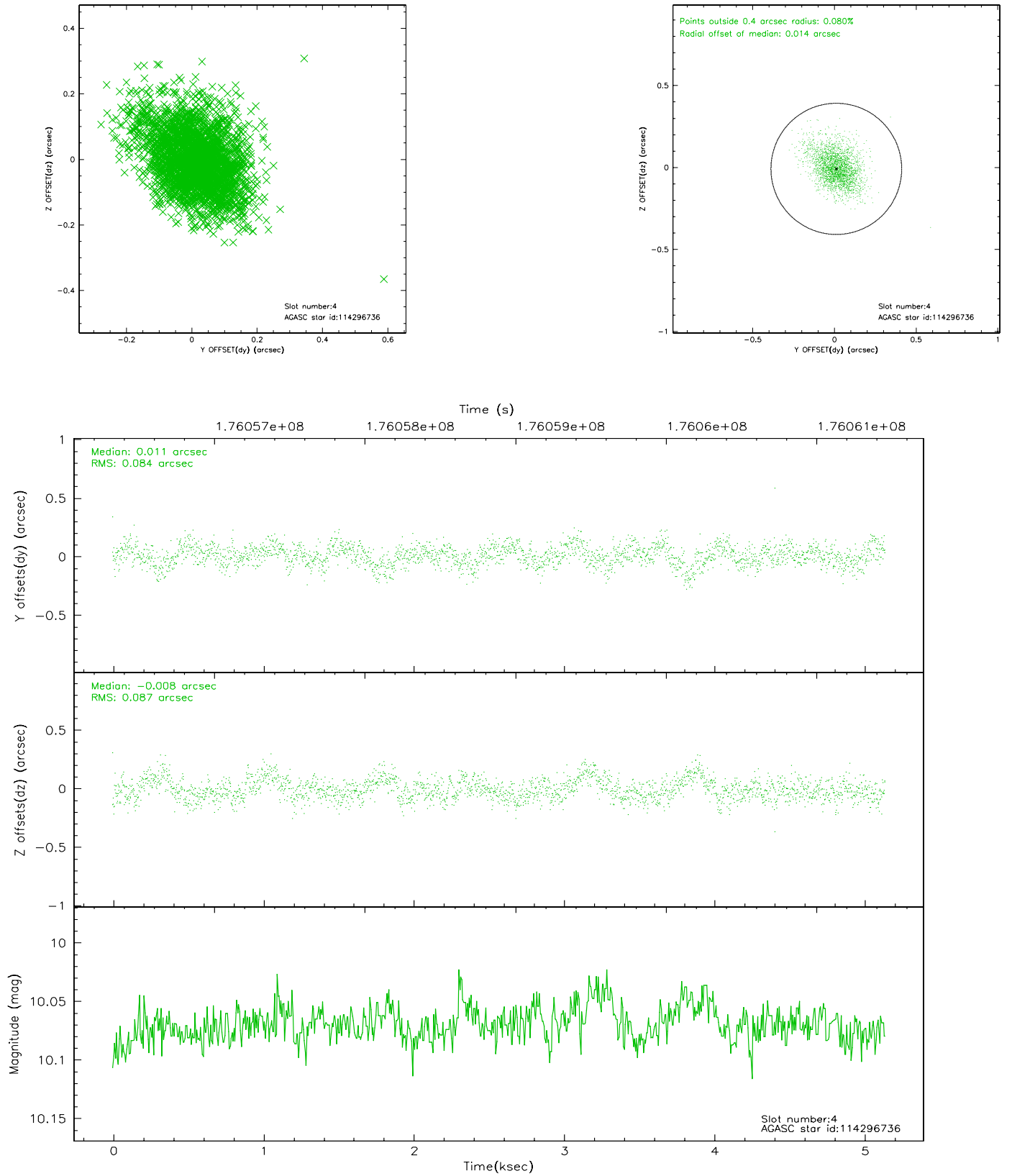
slot	status	id	mag	n_pts	med_dy	med_dz	dr1	dr2	ra	dec	mean_y	mean_z
0	FID	ACIS-S-2	7.09	1252	-0.048	0.008	0.007	0.011	0.000000	0.000000	-759.07	-1731.27
1	FID	ACIS-S-4	7.20	1252	0.025	0.021	0.005	0.008	0.000000	0.000000	2153.72	176.05
2	FID	ACIS-S-5	7.23	1252	-0.009	-0.020	0.006	0.011	0.000000	0.000000	-1810.38	170.97
3	GUIDE	114295496	9.71	2504	0.130	0.056	0.114	0.181	183.211405	12.908034	983.16	773.08
4	GUIDE	114296736	10.07	2506	0.011	-0.008	0.124	0.216	182.549729	12.936724	1399.32	-1513.16
5	GUIDE	114297560	9.49	2504	-0.083	-0.201	0.096	0.150	182.810843	13.553506	-968.65	-1114.16
6	GUIDE	114299584	10.01	2501	-0.054	0.062	0.120	0.194	182.944088	13.572183	-1138.77	-674.01
7	GUIDE	114300512	9.08	2502	-0.005	0.084	0.083	0.129	183.274843	13.061330	395.01	866.21

2.4 Star Slots

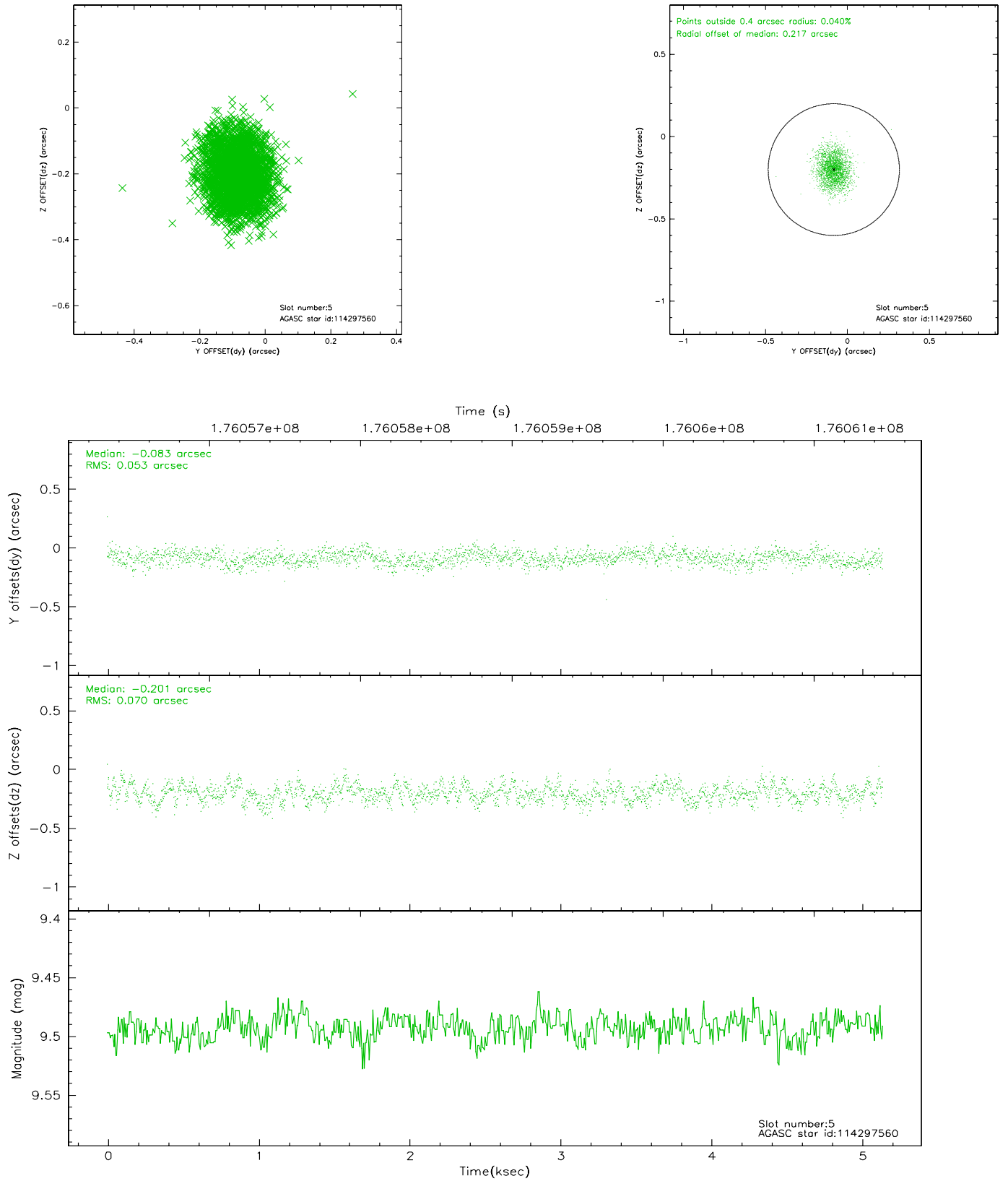
2.4.1 Slot 3



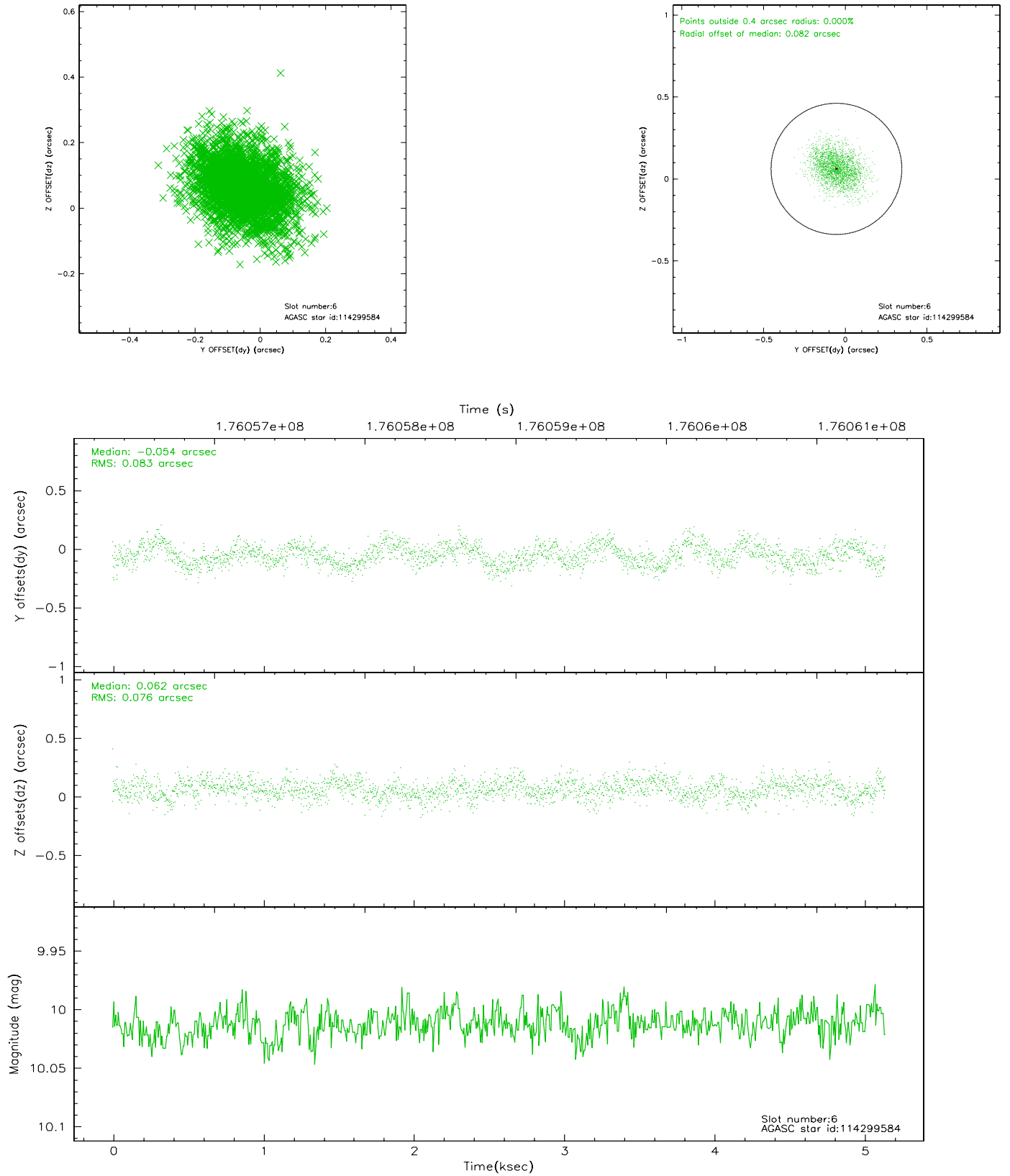
2.4.2 Slot 4



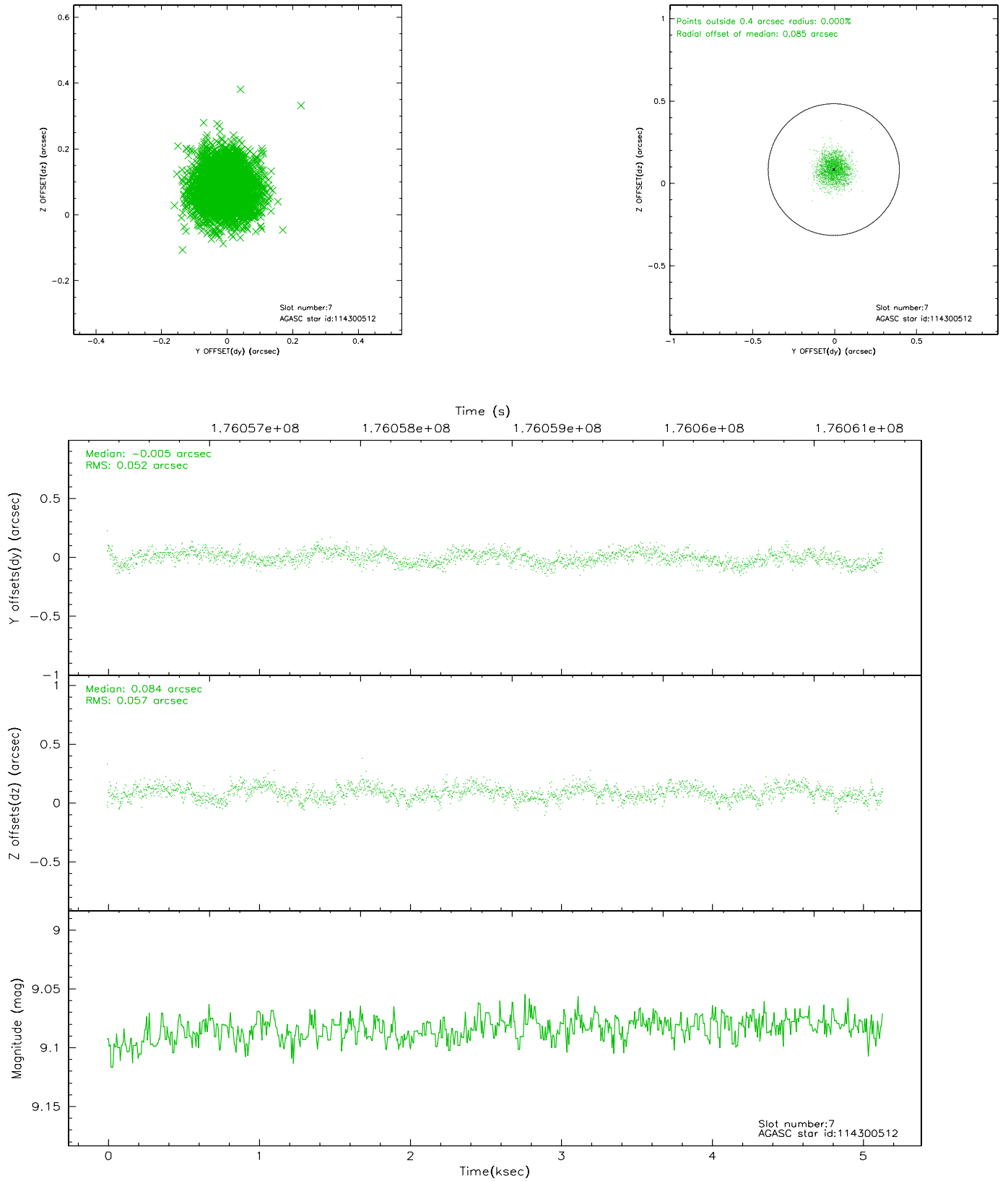
2.4.3 Slot 5



2.4.4 Slot 6

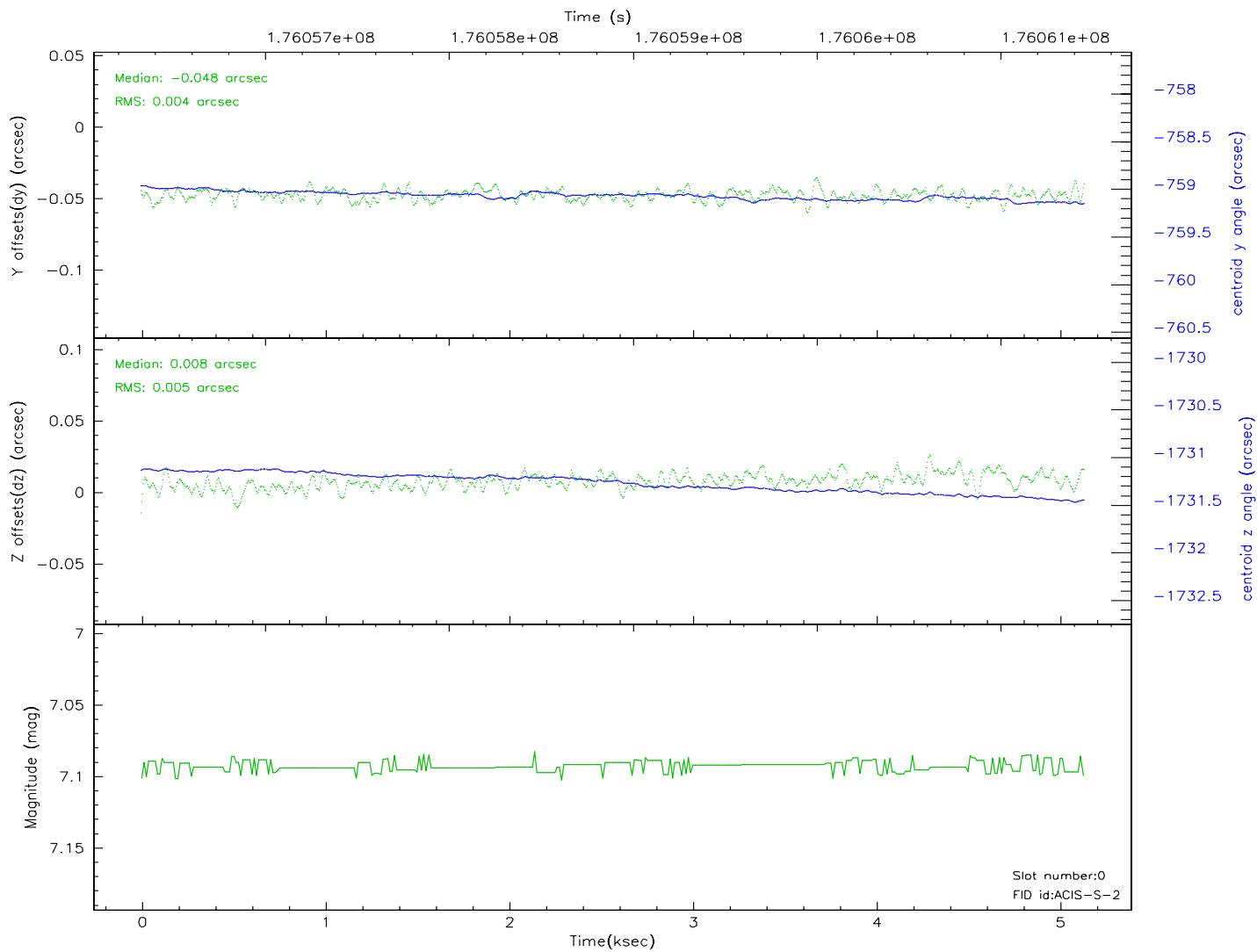
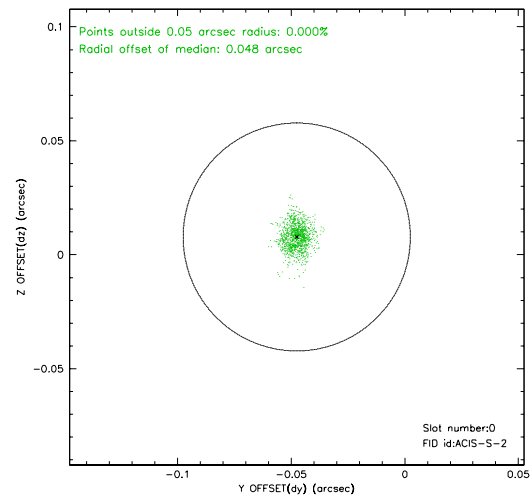
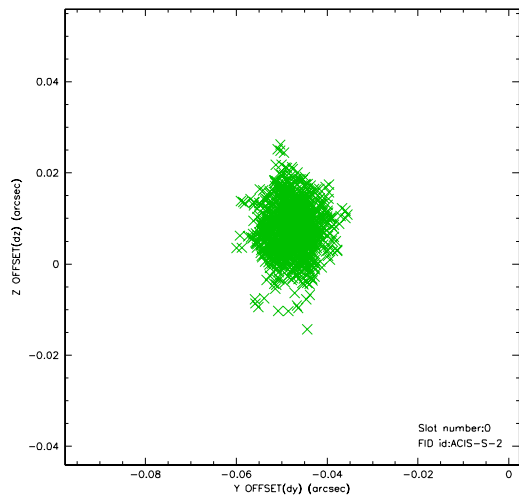


2.4.5 Slot 7

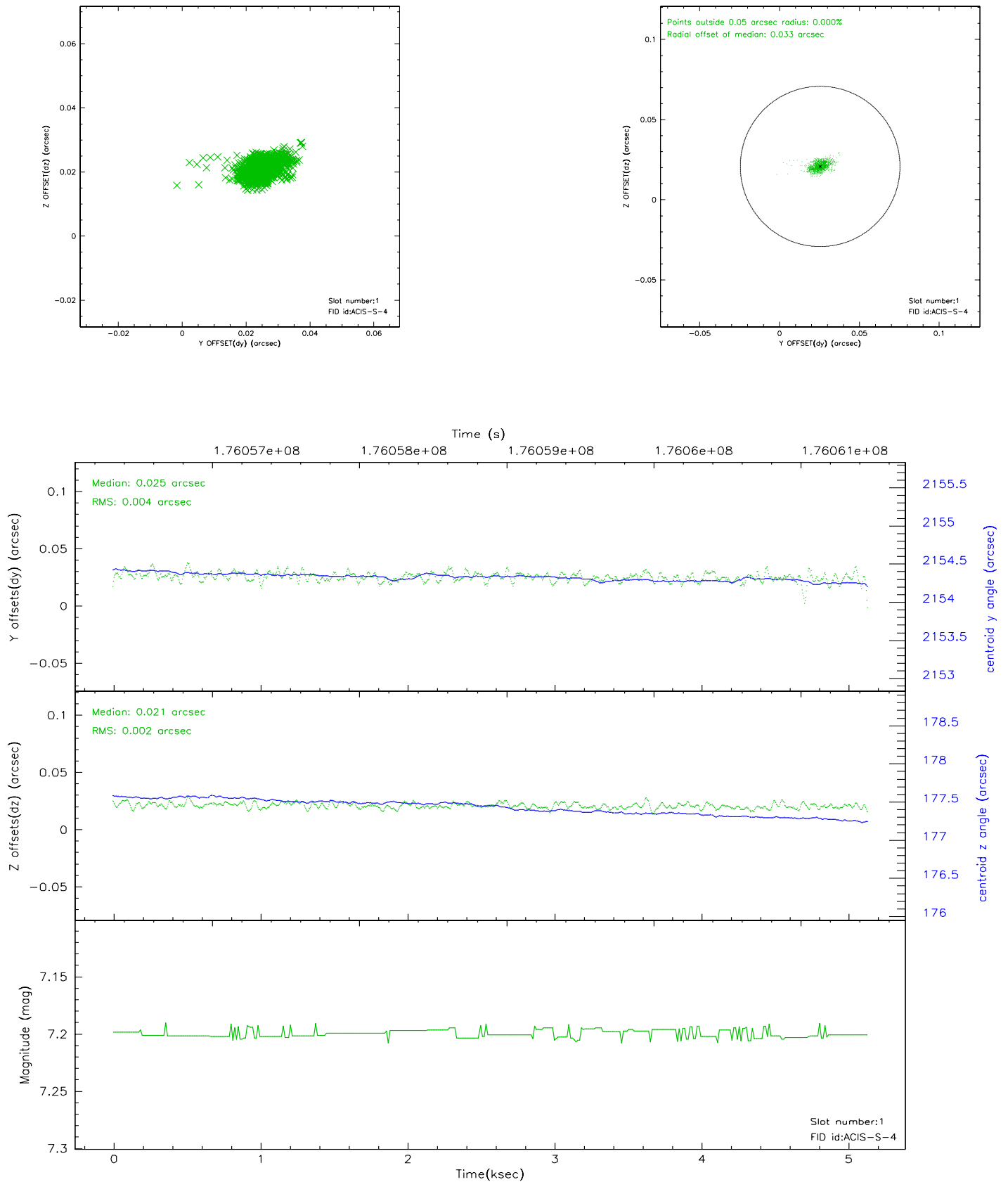


2.5 FID Slots

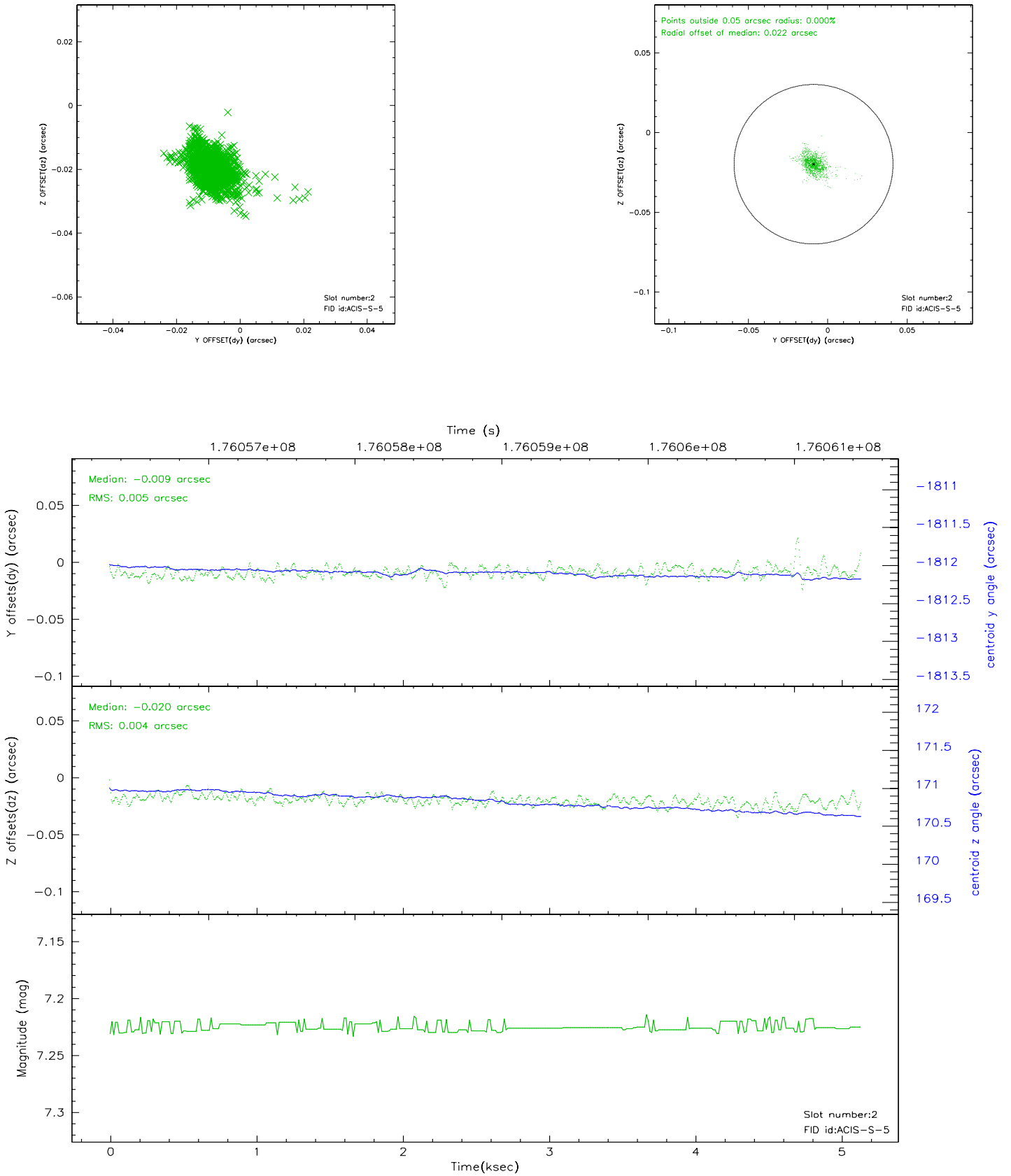
2.5.1 Slot 0



2.5.2 Slot 1



2.5.3 Slot 2



3 Point Sources

A Summary

A.1 Status

V&V Scientist	Jen Lauer
V&V Date (YYYY-MM-DD)	2006.07.12
V&V Edition	1
V&V Disposition and Status	OK
V&V Charge Time	5.129

A.2 Comments