

# V&V Reference Report

## L2 ASCDS Version : 7.6.8

Observation 3945 - L2 Version 001  
Chandra X-Ray Center

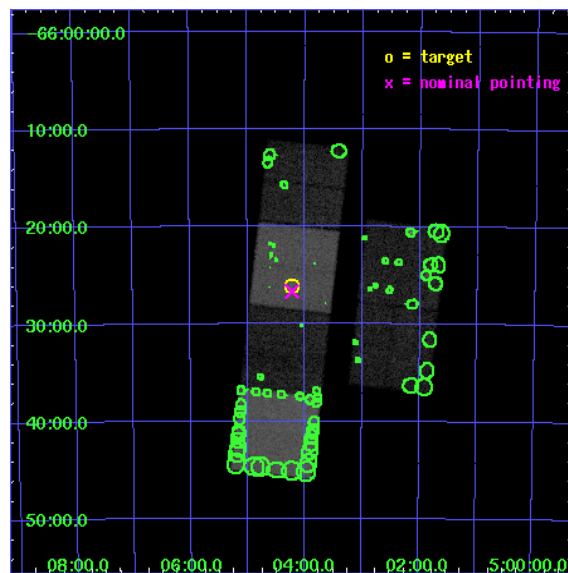
L2 Processing Date : Jul 22 2006

## Contents

<b>1</b>	<b>Front</b>	<b>2</b>
<b>2</b>	<b>OBI</b>	<b>3</b>
2.1	OBI . . . . .	3
2.1.1	Images . . . . .	3
2.1.2	Bias . . . . .	3
2.1.3	Parameters . . . . .	4
2.1.4	Events . . . . .	4
2.2	Compared Parameters . . . . .	5
2.3	Aspect . . . . .	6
2.4	Star Slots . . . . .	9
2.4.1	Slot 3 . . . . .	9
2.4.2	Slot 4 . . . . .	10
2.4.3	Slot 5 . . . . .	11
2.4.4	Slot 6 . . . . .	12
2.4.5	Slot 7 . . . . .	13
2.5	FID Slots . . . . .	14
2.5.1	Slot 0 . . . . .	14
2.5.2	Slot 1 . . . . .	15
2.5.3	Slot 2 . . . . .	16
<b>3</b>	<b>Point Sources</b>	<b>17</b>
<b>A</b>	<b>Summary</b>	<b>18</b>
A.1	Status . . . . .	18
A.2	Comments . . . . .	18

# 1 Front

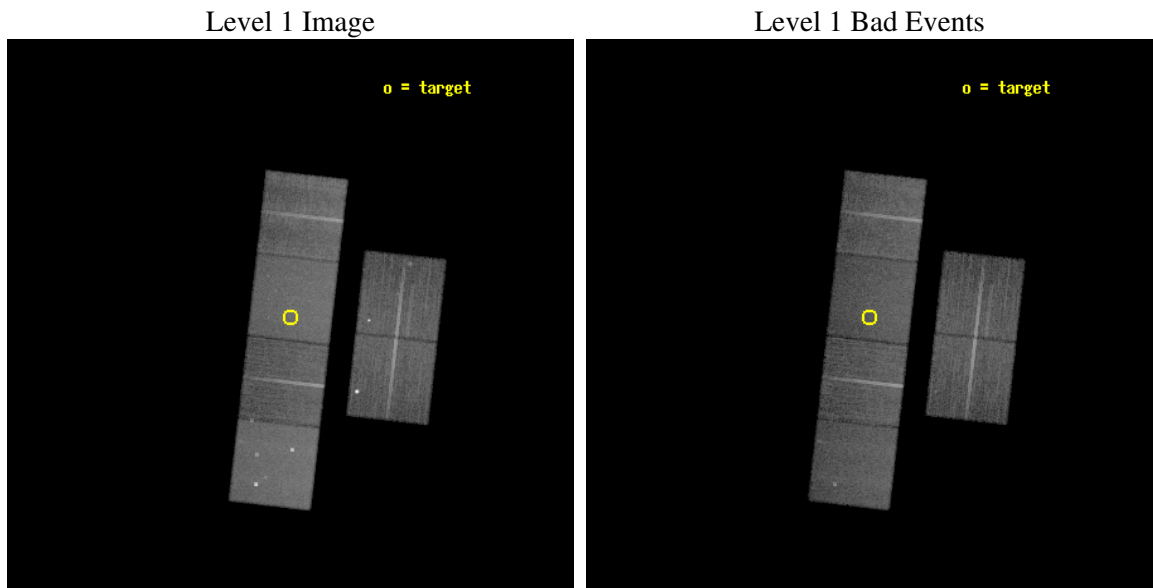
seq_num	600319
obs_id	3945
title	CHANDRA OBSERVATIONS OF RICH LMC STAR CLUSTERS
observer	Dr. Andrea Prestwich
object	NGC 1818
dtcycle	0
cycle	P
ra_targ	76.058333
dec_targ	-66.435
ra_nom	76.056802358195
dec_nom	-66.444657397556
roll_nom	276.53014522475
revision	2
ontime	24959.999907017
livetime	24643.941359087
ontime2	24959.999907017
ontime3	24959.999907017
ontime5	24959.999907017
ontime6	24959.999907017
ontime7	24959.999907017
ontime8	24959.999907017
l2events	256802



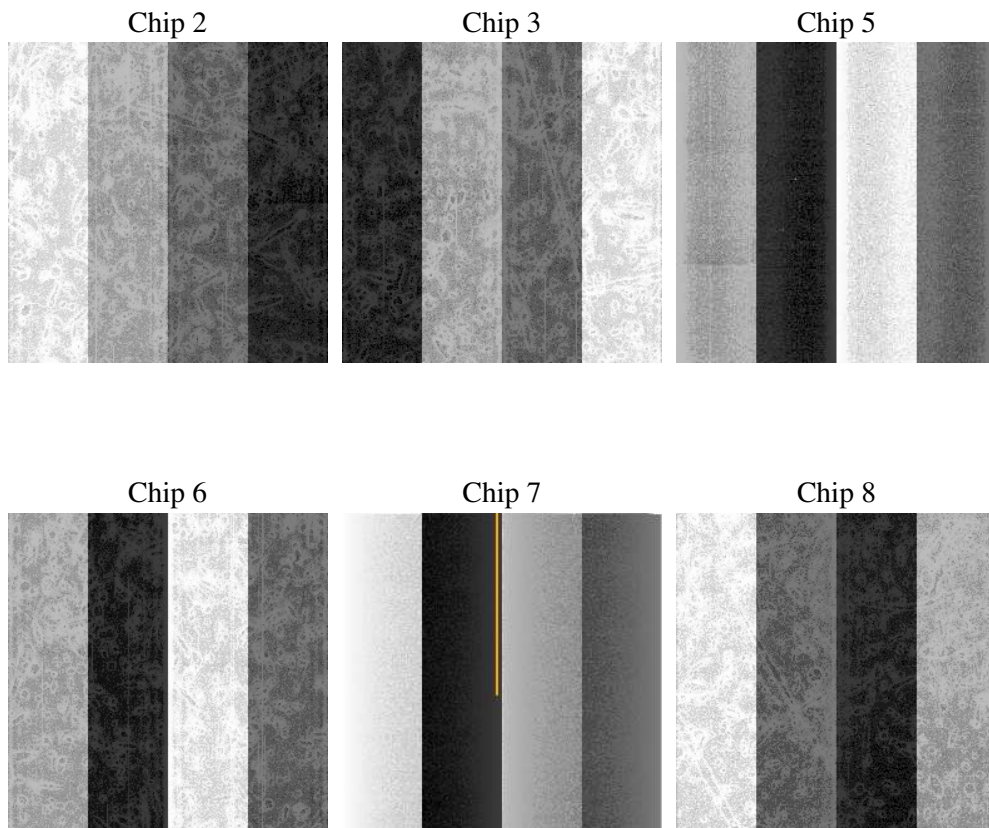
## 2 OBI

### 2.1 OBI

#### 2.1.1 Images



#### 2.1.2 Bias



### 2.1.3 Parameters

obi_num	1
ascdsver	7.6.8
caldbver	3.2.2
date	2006-07-22T10:54:42
revision	2

sched_exp_time	25000.000000
ontime	24965.432319701
ontime2	24965.432319701
ontime3	24965.432319701
ontime5	24965.432319701
ontime6	24965.432319701
ontime7	24965.432319701
ontime8	24965.432319701
l1events	1139478

### 2.1.4 Events

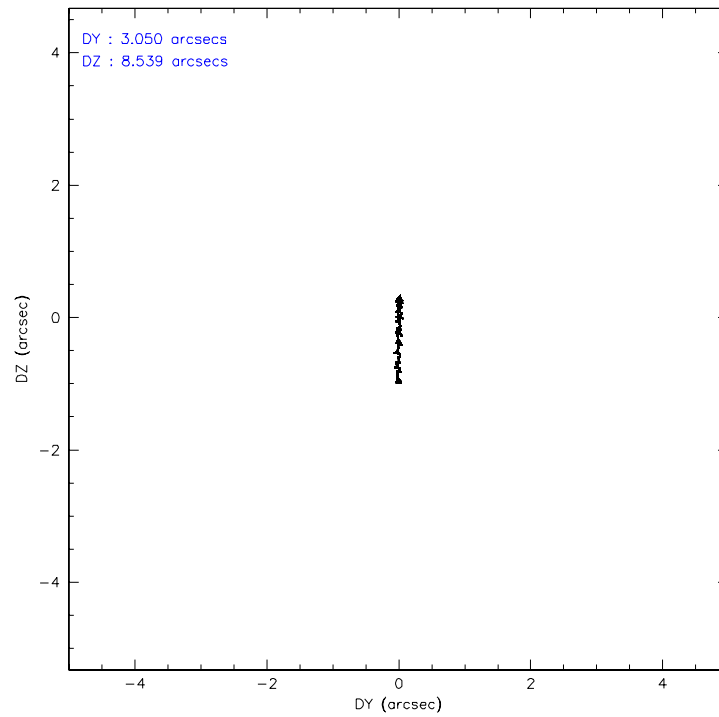
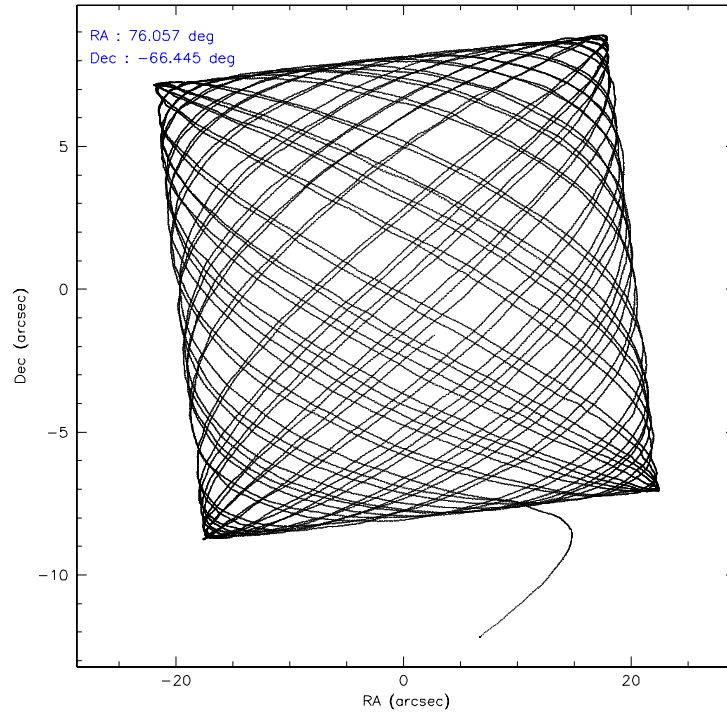
	ccd 2	ccd 3	ccd 5	ccd 6	ccd 7	ccd 8
level 1 events	169459	158199	238279	162331	212304	198906
rejected events	141033	136763	129921	143363	130595	158118
rejected %	83%	86%	54%	88%	61%	79%

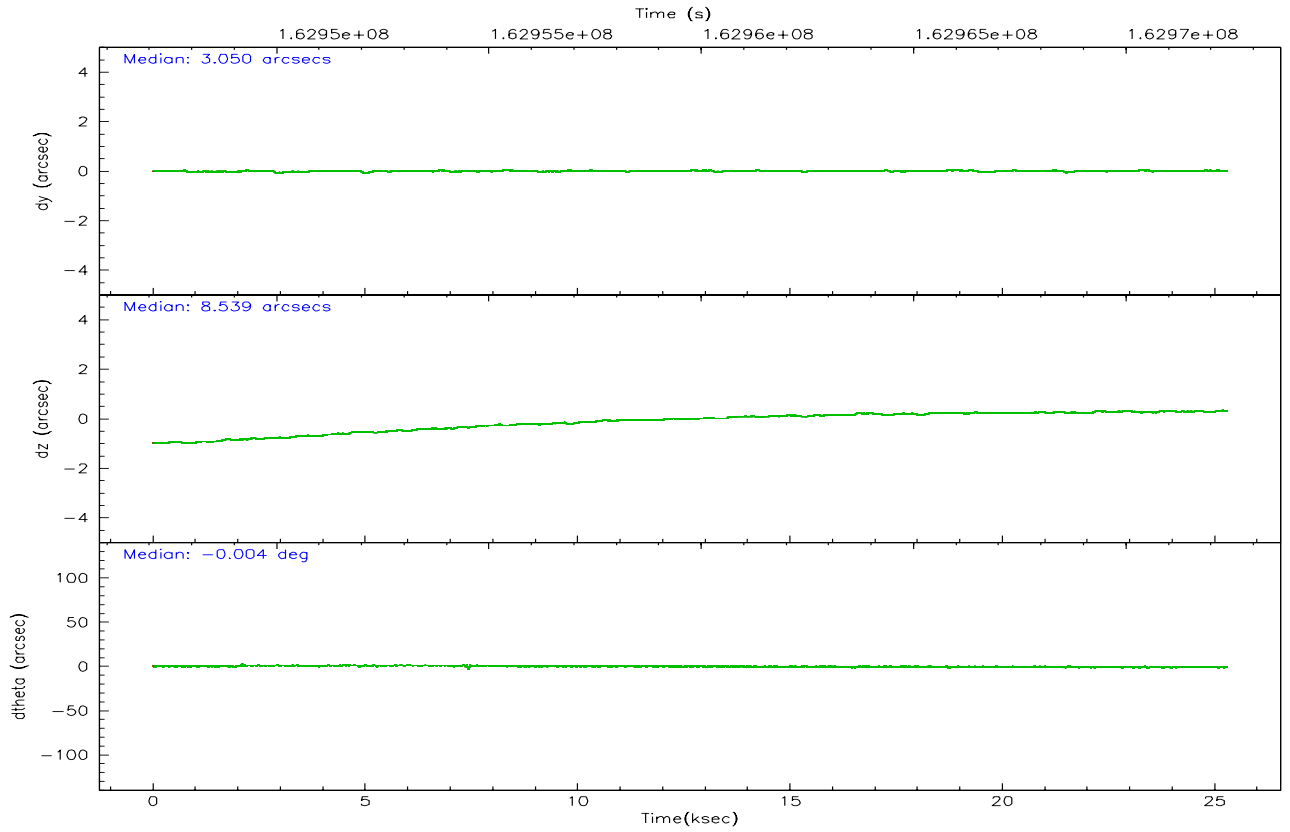
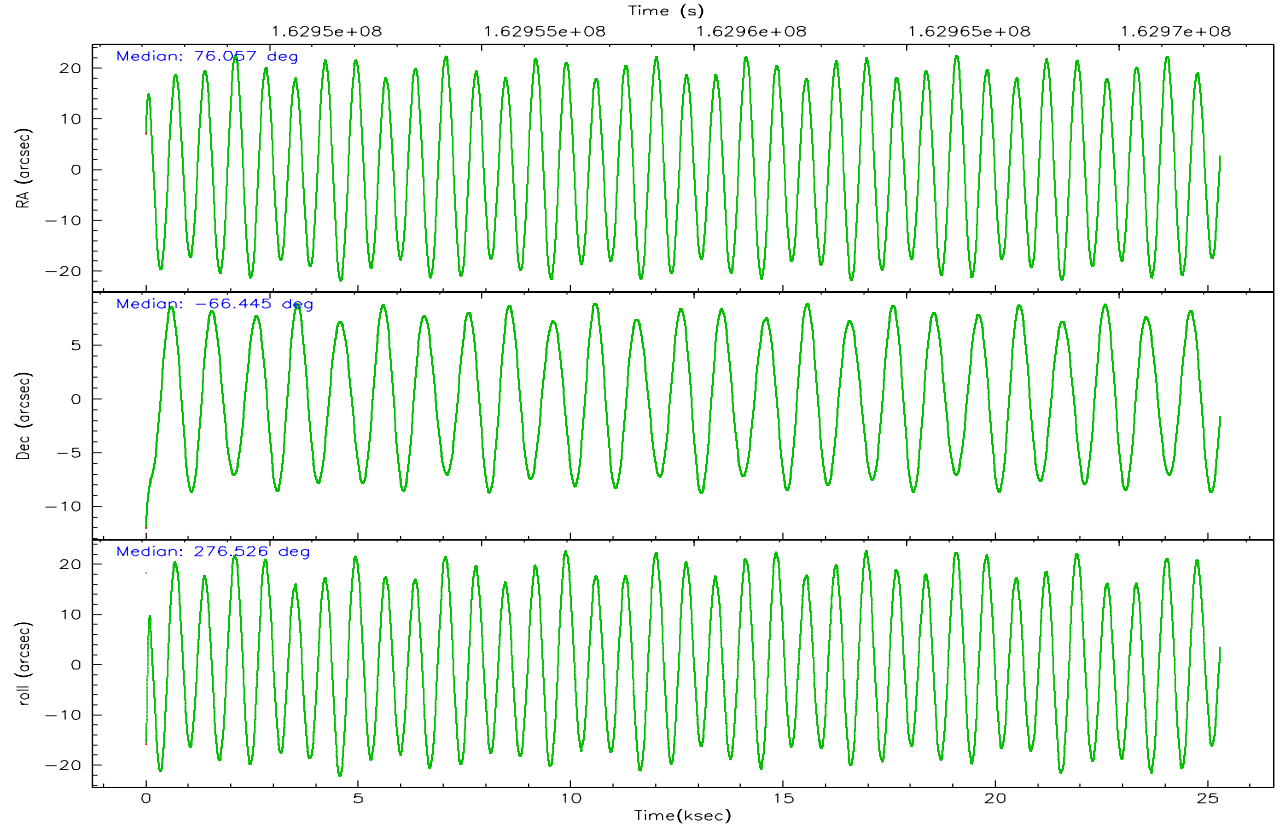
	ccd 2	ccd 3	ccd 5	ccd 6	ccd 7	ccd 8
grade 0 events	16309	10768	11867	7744	4894	12966
	9%	6%	4%	4%	2%	6%
grade 1 events	158	98	787	64	120	125
	0%	0%	0%	0%	0%	0%
grade 2 events	4796	3711	33158	3823	19980	8905
	2%	2%	13%	2%	9%	4%
grade 3 events	2032	1855	2398	1894	4307	4226
	1%	1%	1%	1%	2%	2%
grade 4 events	2023	1924	2305	1823	4188	3977
	1%	1%	0%	1%	1%	1%
grade 5 events	6117	6736	11074	7249	14019	9416
	3%	4%	4%	4%	6%	4%
grade 6 events	3271	3183	58653	3689	48356	10721
	1%	2%	24%	2%	22%	5%
grade 7 events	134753	129924	118037	136045	116440	148570
	79%	82%	49%	83%	54%	74%

## 2.2 Compared Parameters

Parameter	Planned	Actual	Parameter	Planned	Actual
Instrument	ACIS	ACIS	Obspar format version number	6	6
Detector	ACIS-235678	ACIS-235678	Obspar file type	PREDICTED	ACTUAL
Grating	NONE	NONE	Obspar update status	NONE	UPDATED
Data mode	FAINT	FAINT	On-chip summing requested	N	N
Observation mode	POINTING	POINTING	Subarray requested	NONE	NONE
Pointing RA	76.015568	76.05680235819466	Alternating exposures requested	N	N
Pointing Dec	-66.422983	-66.44465739755589	Primary exposure time	0.000000	3.2
Pointing Roll	276.335730	276.5301452247534			
SIM focus pos (mm)	-0.684267	-0.6828225247311905			
SIM defocus (mm)	0	0.001444936568705701			
SIM translation stage pos (mm)	-190.132523	-190.1400660498719			
SIM translation stage offset (mm)	0	0.00754346686406393			
Observation start time	162947383.184000	162946372.1345			
Observation start date	2003-03-01T23:08:39	2003-03-01T22:52:52			
Observation end time	162972383.184000	162973300.93563			
Observation end date	2003-03-02T06:05:19	2003-03-02T06:21:40			
Read mode	TIMED	TIMED			

## 2.3 Aspect



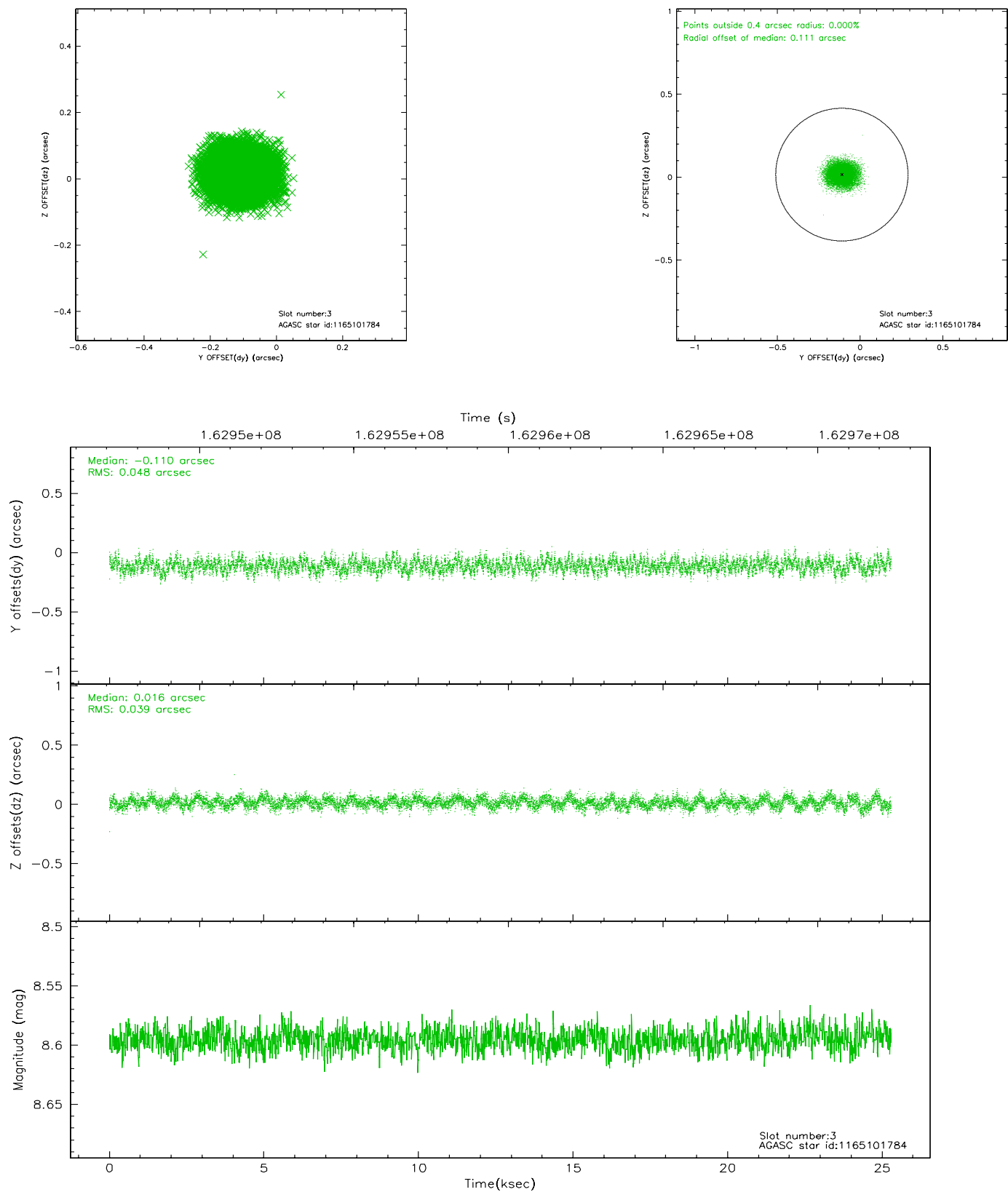


### Slot Statistics

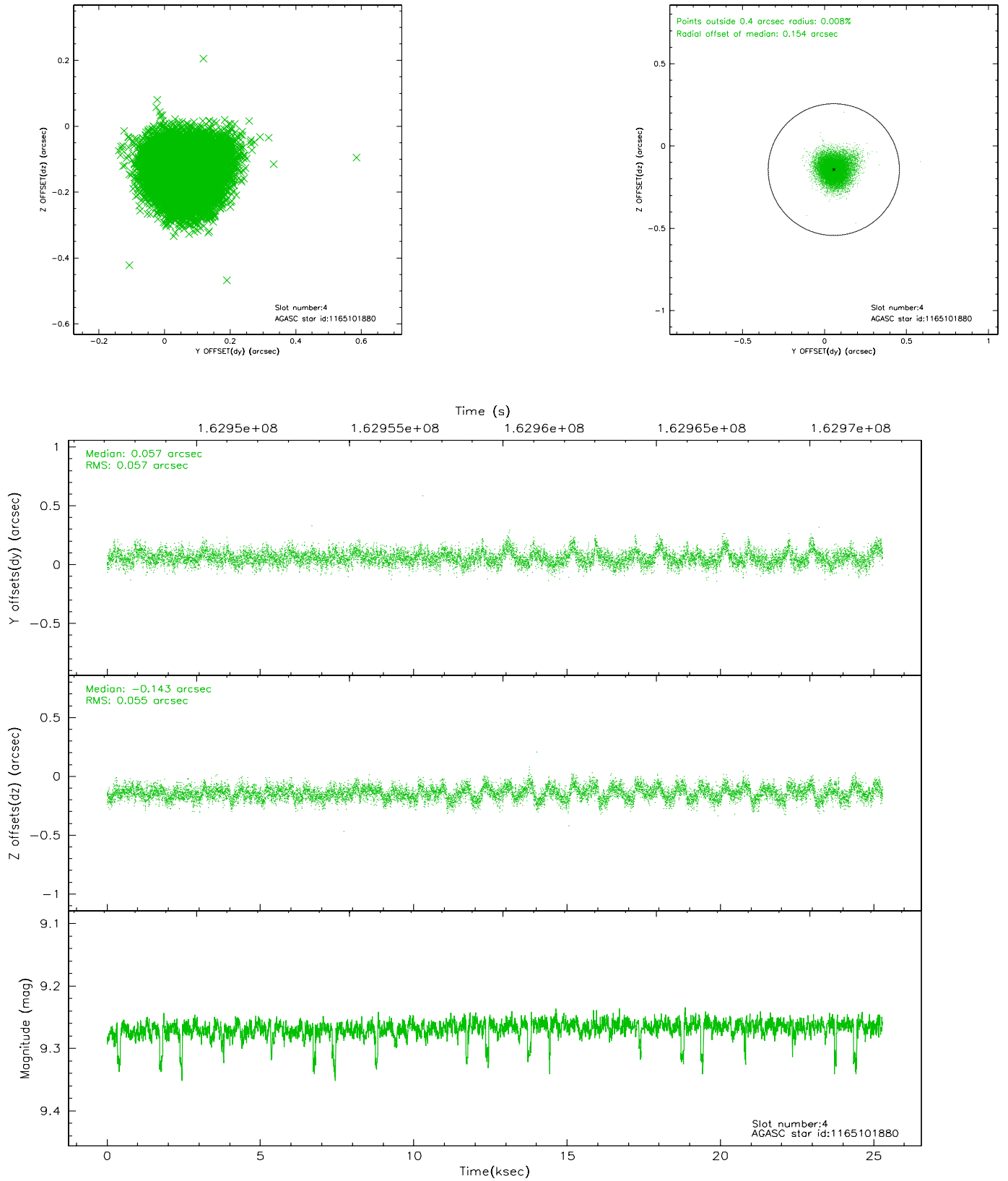
slot	status	id	mag	n_pts	med_dy	med_dz	dr1	dr2	ra	dec	mean_y	mean_z
0	FID	ACIS-S-2	7.11	6170	-0.013	0.004	0.010	0.017	0.000000	0.000000	-755.70	-1729.61
1	FID	ACIS-S-4	7.20	6170	-0.025	0.005	0.008	0.015	0.000000	0.000000	2157.50	178.76
2	FID	ACIS-S-5	7.24	6170	0.007	-0.001	0.006	0.011	0.000000	0.000000	-1808.38	172.55
3	GUIDE	1165101784	8.60	12339	-0.110	0.016	0.066	0.106	76.588883	-65.966778	-1535.60	1016.40
4	GUIDE	1165101880	9.27	12330	0.057	-0.143	0.083	0.138	76.429271	-66.849074	1591.25	412.91
5	GUIDE	1165102224	9.52	12327	0.056	-0.036	0.094	0.151	75.124856	-66.013882	-1597.95	-1133.78
6	GUIDE	1165103840	9.76	12333	0.009	0.077	0.131	0.212	74.488651	-66.144068	-1216.07	-2101.33
7	GUIDE	1165102624	8.89	12329	-0.008	0.083	0.070	0.113	75.776434	-66.910082	1706.38	-528.75

## 2.4 Star Slots

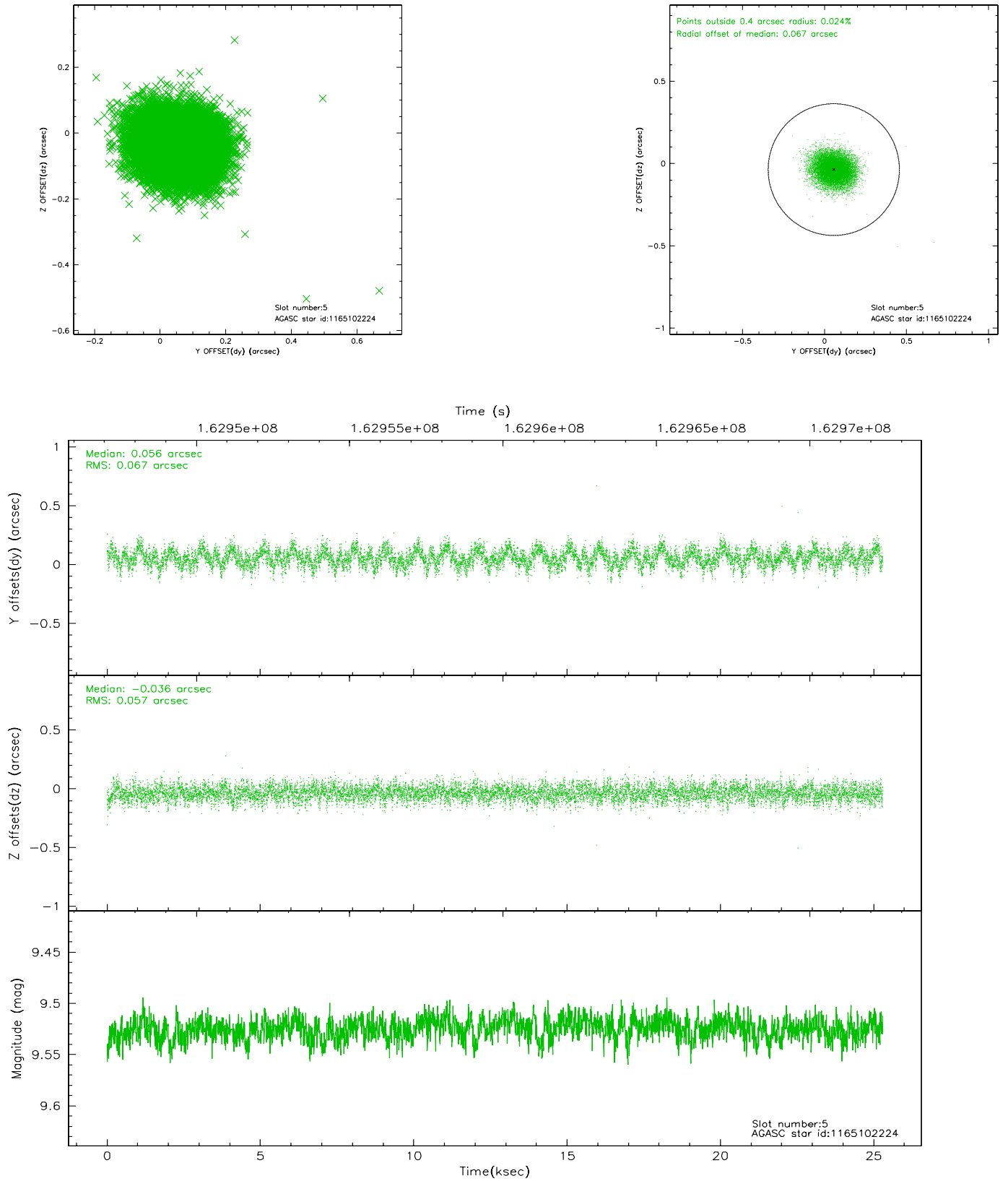
### 2.4.1 Slot 3



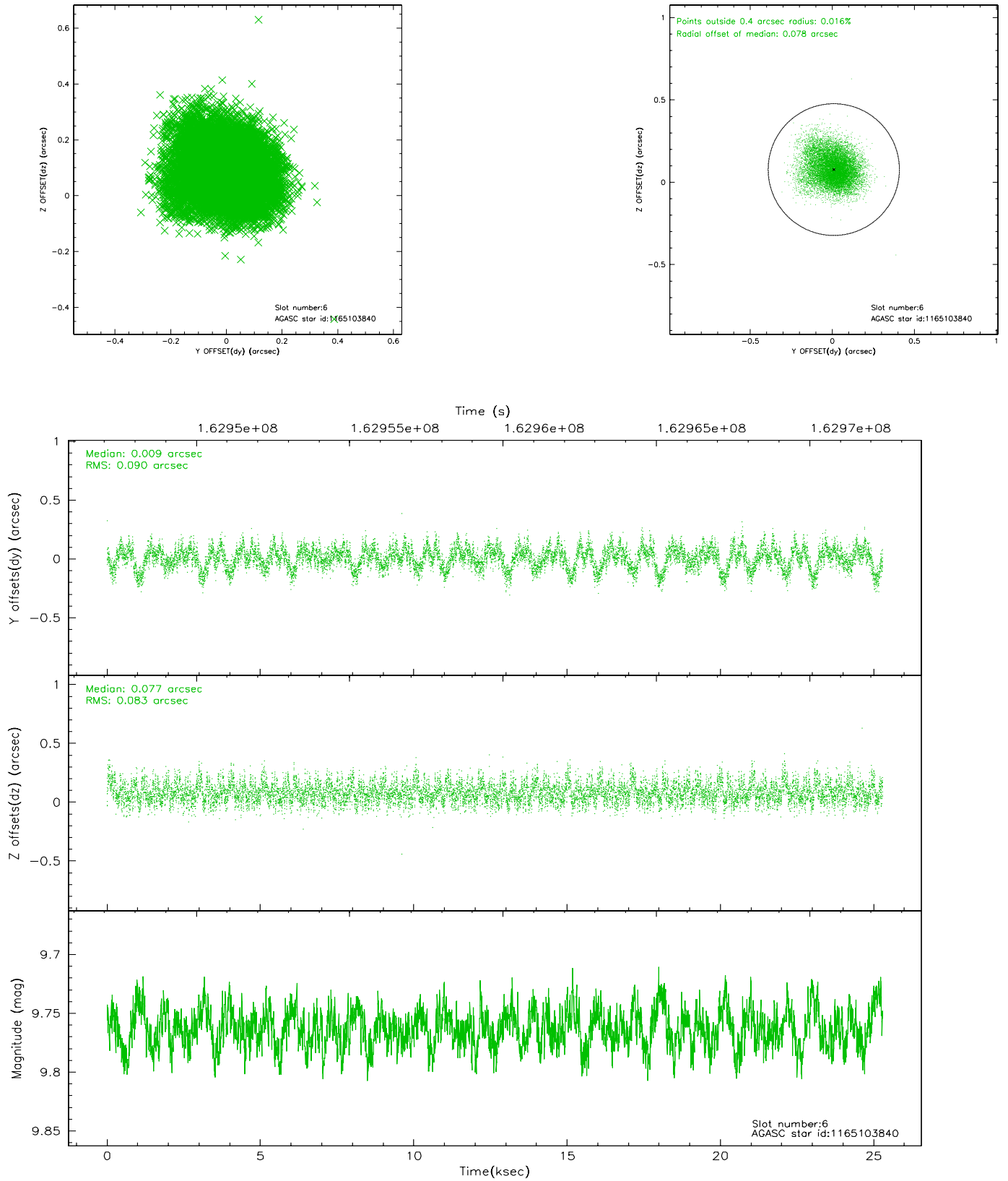
## 2.4.2 Slot 4



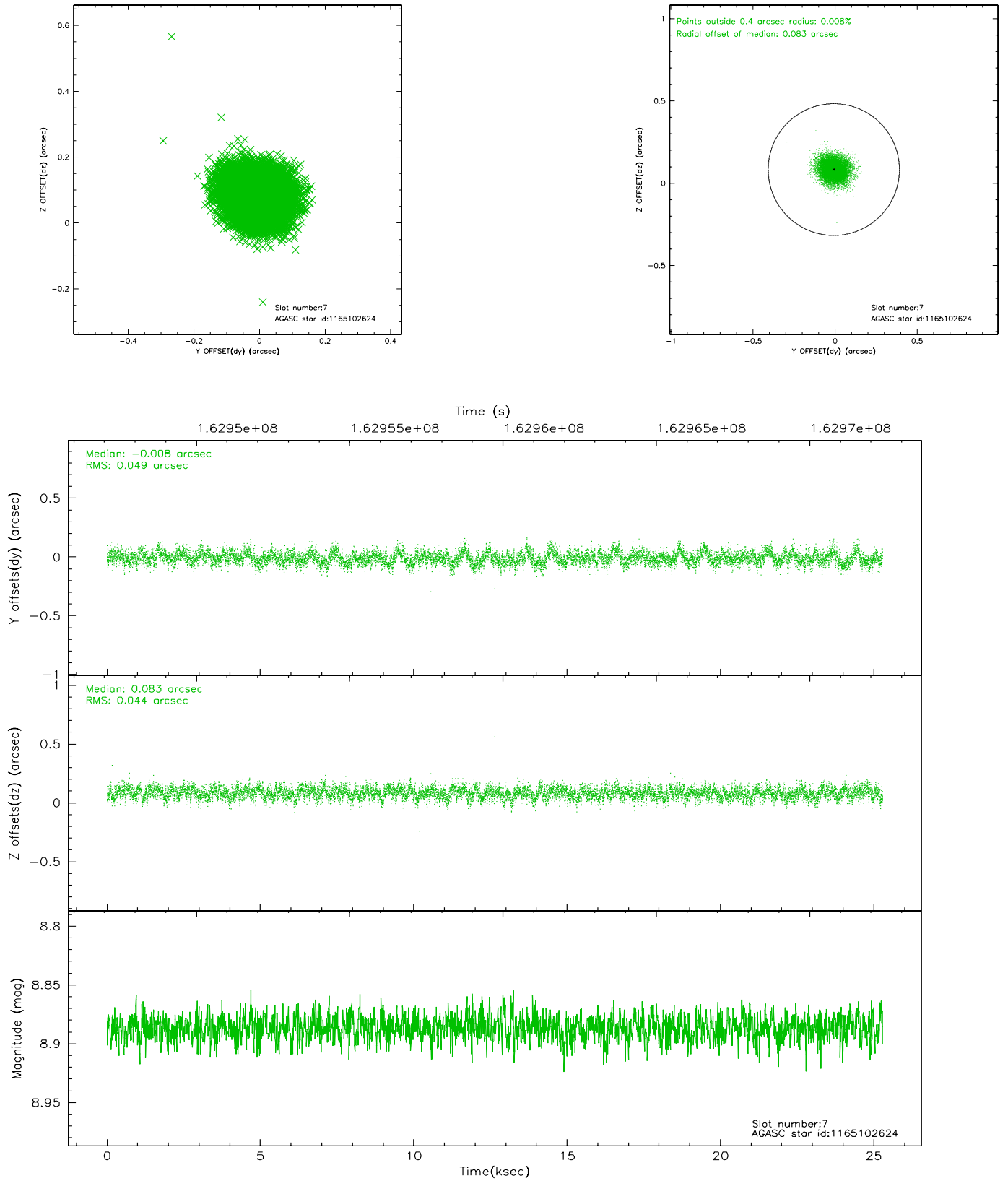
### 2.4.3 Slot 5



## 2.4.4 Slot 6

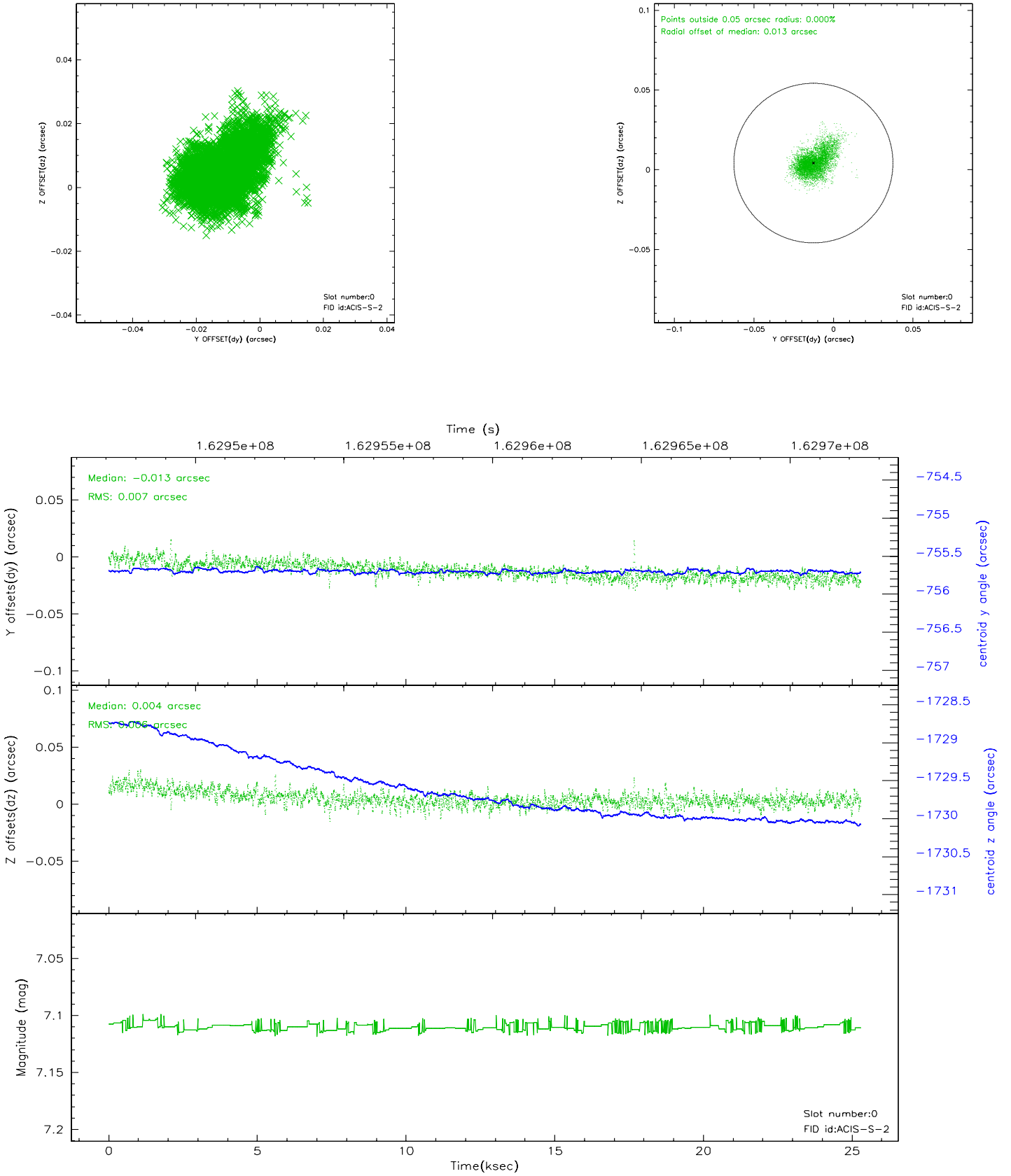


## 2.4.5 Slot 7

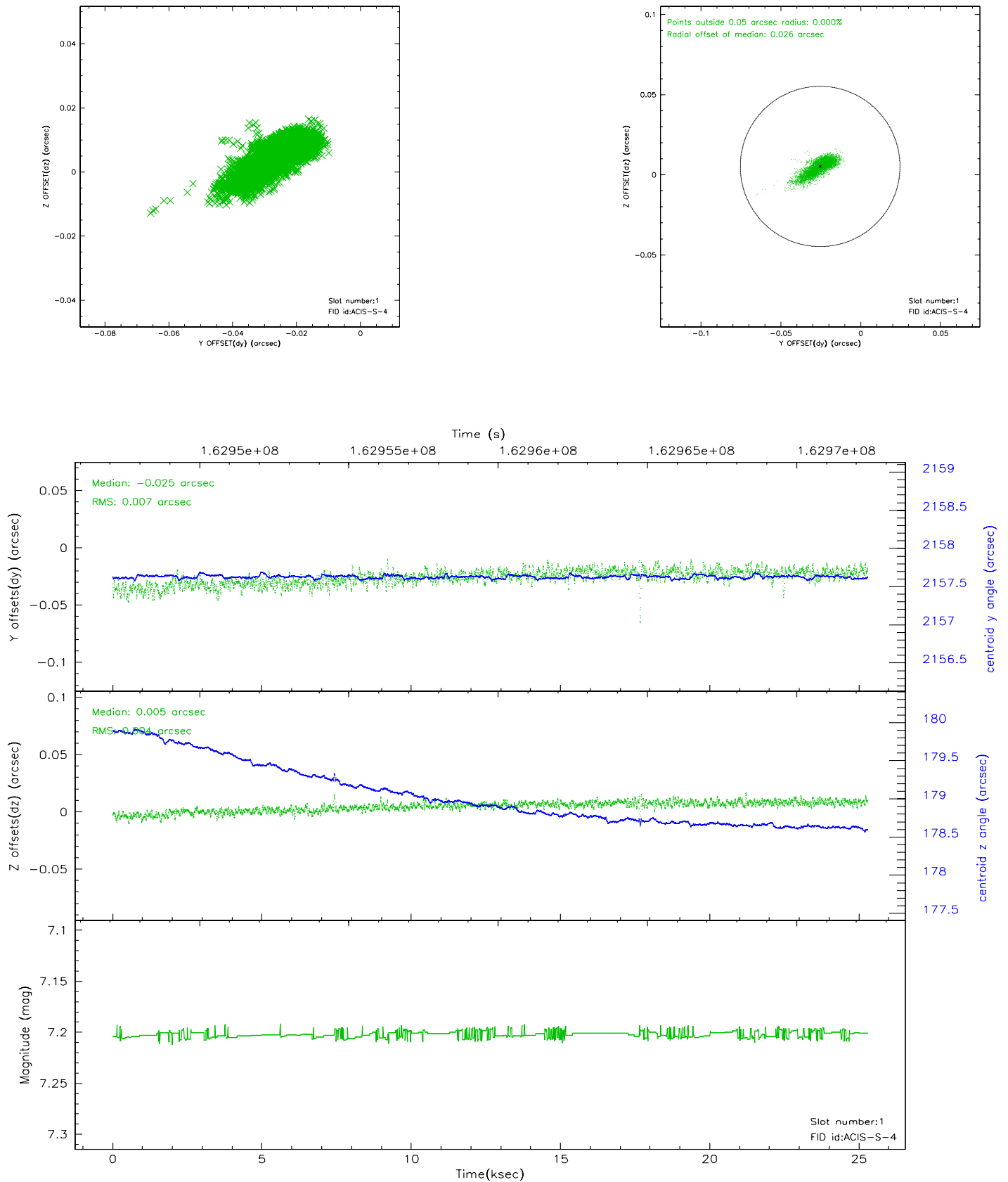


## 2.5 FID Slots

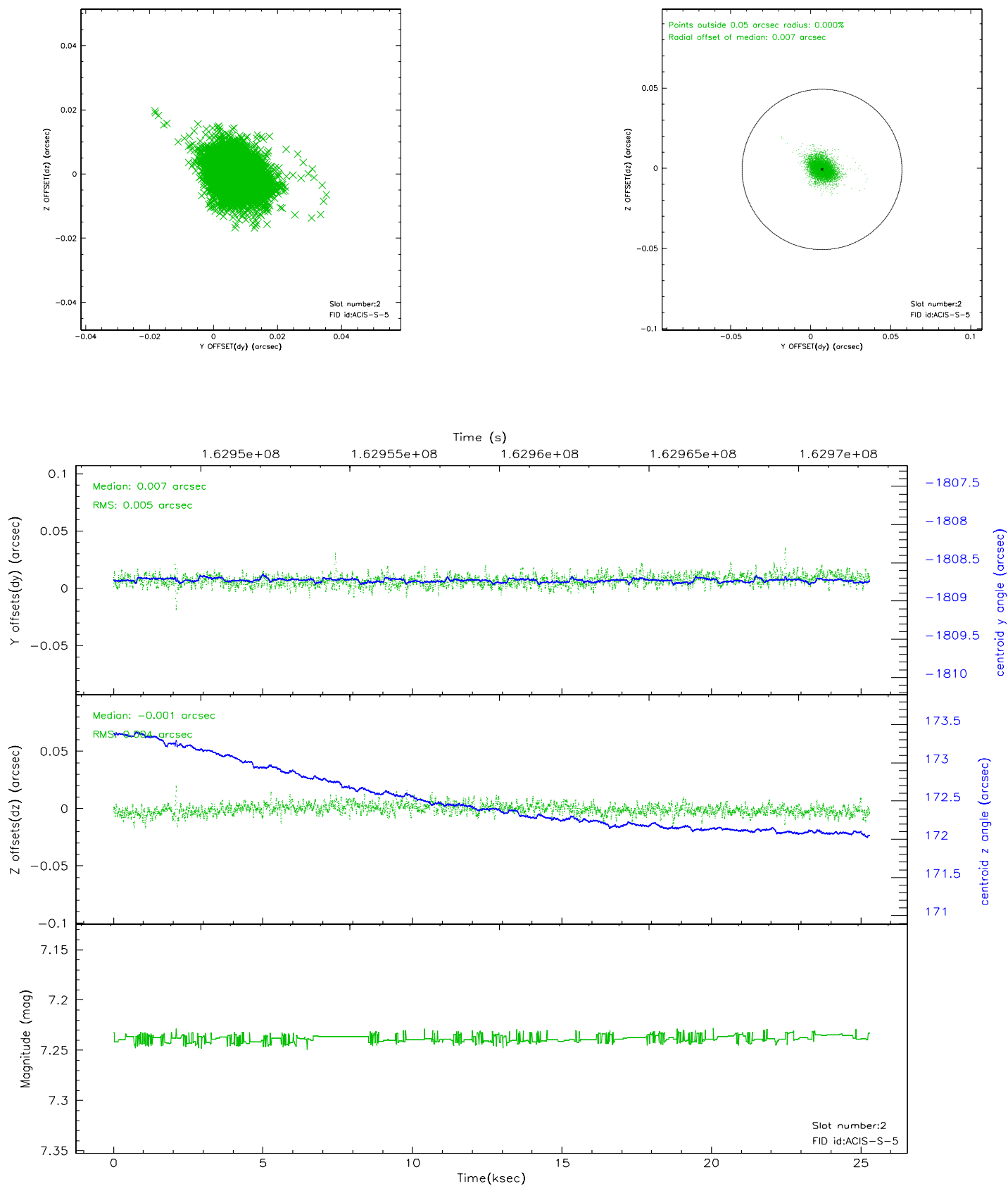
### 2.5.1 Slot 0



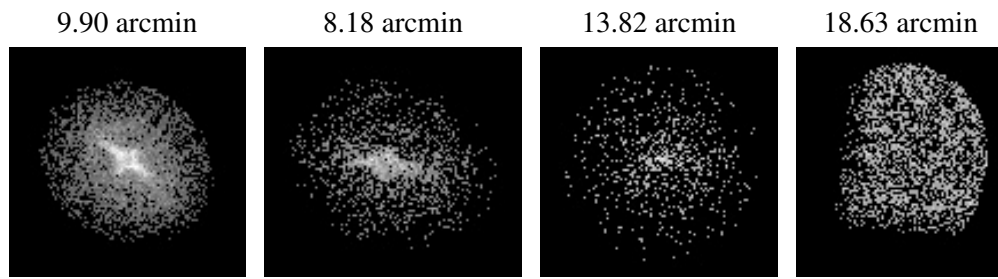
## 2.5.2 Slot 1



### 2.5.3 Slot 2



### 3 Point Sources



## A Summary

### A.1 Status

V&V Scientist	Beth Sundheim
V&V Date (YYYY-MM-DD)	2006.07.23
V&V Edition	1
V&V Disposition and Status	OK
V&V Charge Time	24.96

### A.2 Comments