

V&V Reference Report

L2 ASCDS Version : 7.6.8

Observation 3745 - L2 Version 001
Chandra X-Ray Center

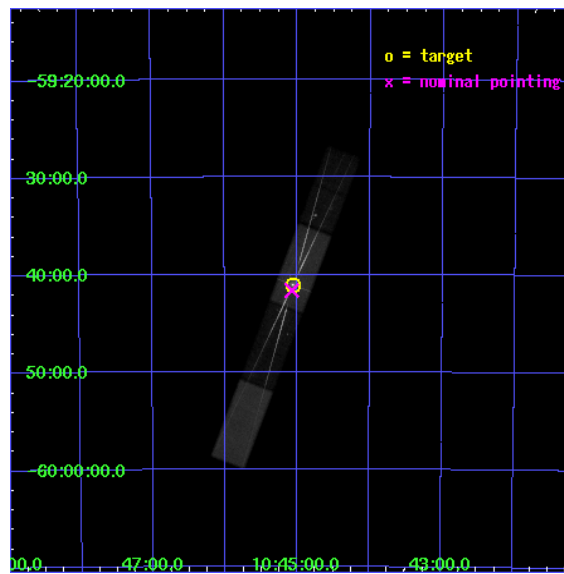
L2 Processing Date : Aug 1 2006

Contents

1	Front	2
2	OBI	3
2.1	OBI	3
2.1.1	Images	3
2.1.2	Bias	3
2.1.3	Parameters	4
2.1.4	Events	4
2.2	Compared Parameters	5
2.3	Aspect	6
2.4	Star Slots	9
2.4.1	Slot 3	9
2.4.2	Slot 4	10
2.4.3	Slot 5	11
2.4.4	Slot 6	12
2.4.5	Slot 7	13
2.5	FID Slots	14
2.5.1	Slot 0	14
2.5.2	Slot 1	15
2.5.3	Slot 2	16
3	Gratings	17
3.1	HEG Arm	17
3.2	MEG Arm	19
A	Summary	21
A.1	Status	21
A.2	Comments	21

1 Front

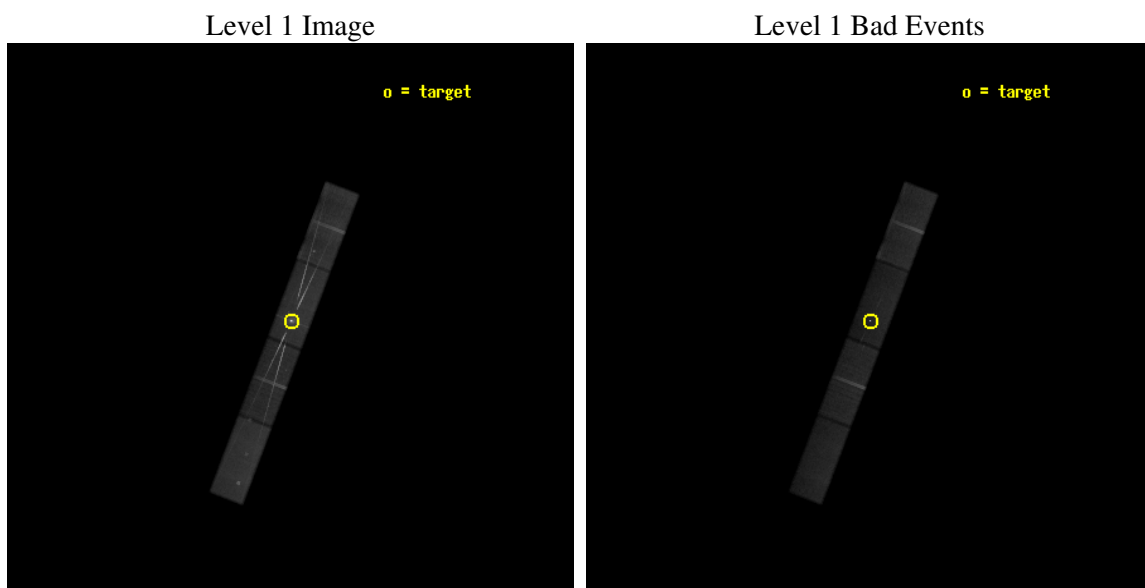
seq_num	200215
obs_id	3745
title	UNVEILING ETA CAR: CHANDRA OBSERVATIONS DURING THE 2003.5 EVENT
observer	Dr Michael Corcoran
object	ETA CARINAE
dtcycle	0
cycle	P
ra_targ	161.265
dec_targ	-59.684528
ra_nom	161.26855634461
dec_nom	-59.69400674588
roll_nom	290.84540428729
revision	2
ontime	97304.170207471
livetime	94533.002755273
ontime5	97295.524176627
ontime6	97260.939813733
ontime7	97304.170207471
ontime8	97258.057474881
l2events	691947



2 OBI

2.1 OBI

2.1.1 Images



2.1.2 Bias

Chip 5

Chip 6

Chip 7



Chip 8



2.1.3 Parameters

obi_num	2
ascdsver	7.6.8
caldbver	3.2.2
date	2006-08-01T11:32:37
revision	2

sched_exp_time	97223.141000
ontime	98156.830985069
ontime5	98148.184954226
ontime6	98113.600591332
ontime7	98156.830985069
ontime8	98110.71825248
l1events	1782662

2.1.4 Events

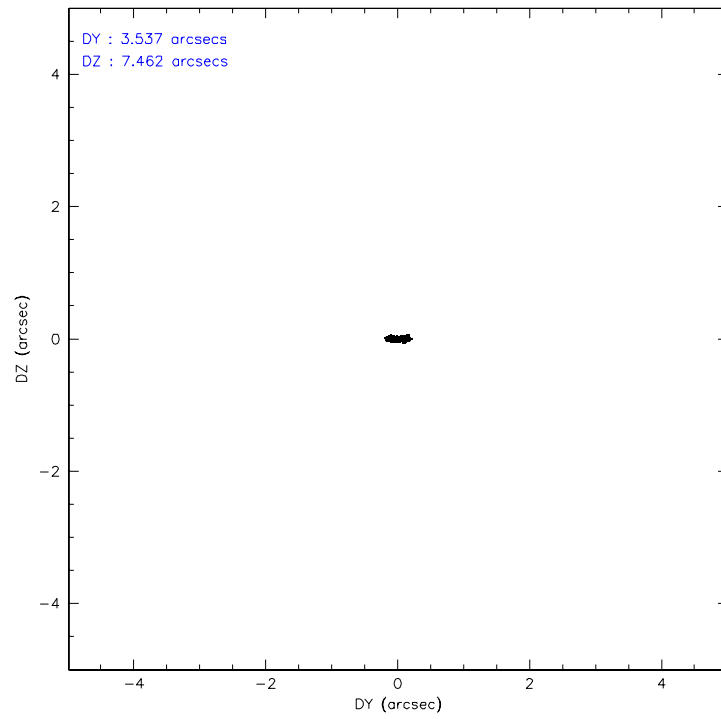
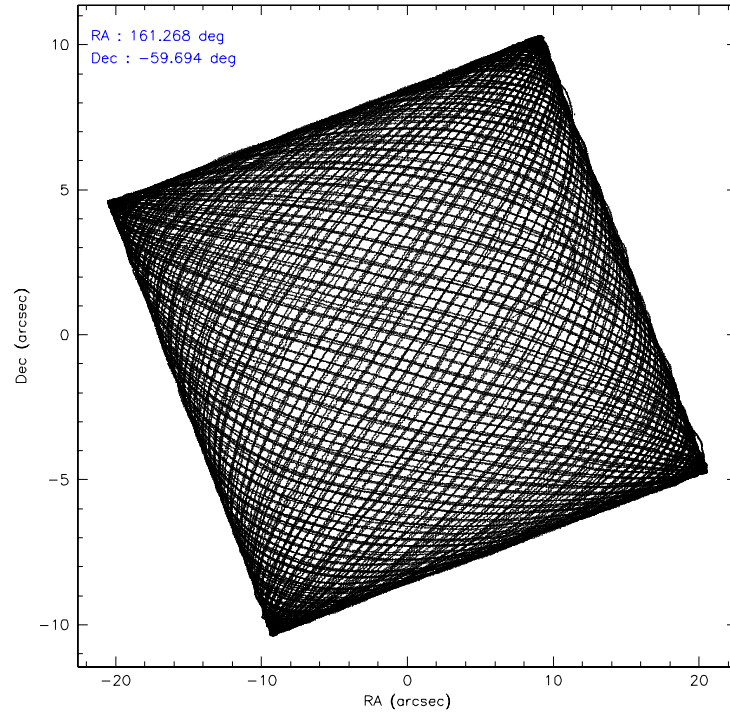
	ccd 5	ccd 6	ccd 7	ccd 8
level 1 events	403912	384114	588116	406520
rejected events	216690	257697	245091	302169
rejected %	53%	67%	41%	74%

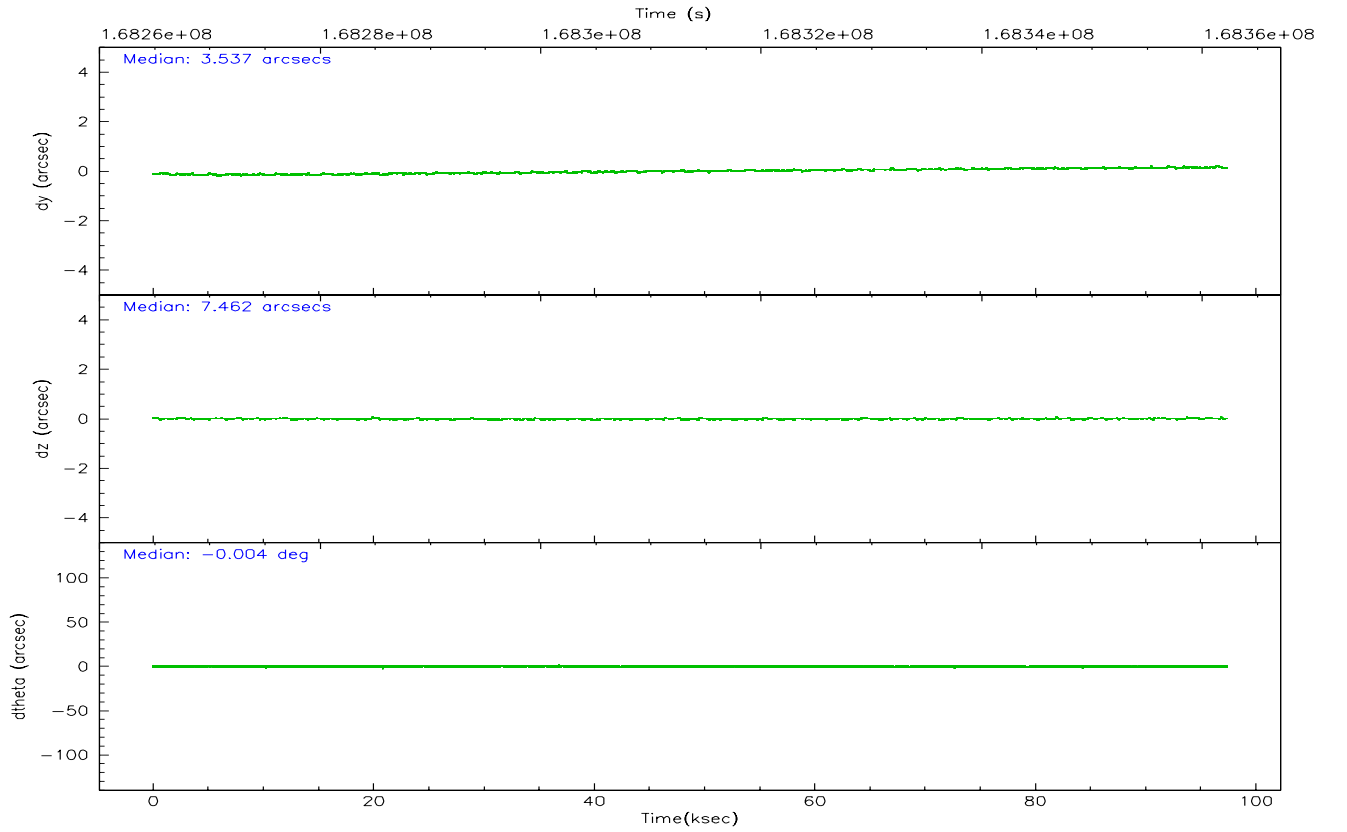
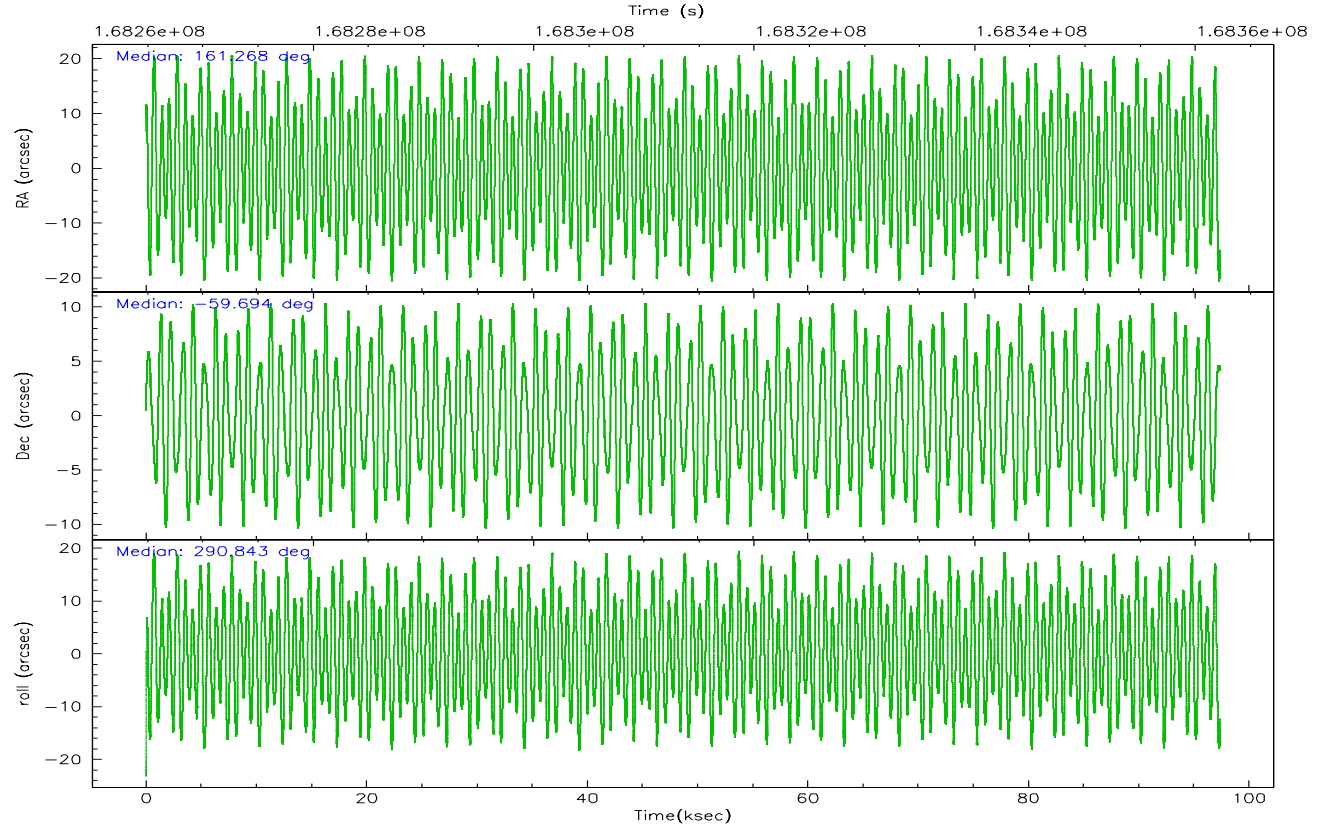
	ccd 5	ccd 6	ccd 7	ccd 8
grade 0 events	19716	78100	44327	45086
	4%	20%	7%	11%
grade 1 events	501	311	1541	241
	0%	0%	0%	0%
grade 2 events	55254	18801	81090	19076
	13%	4%	13%	4%
grade 3 events	8120	8413	29299	9869
	2%	2%	4%	2%
grade 4 events	7532	8331	28476	9506
	1%	2%	4%	2%
grade 5 events	21916	11492	35771	14912
	5%	2%	6%	3%
grade 6 events	98468	13216	161474	21504
	24%	3%	27%	5%
grade 7 events	192405	245450	206138	286326
	47%	63%	35%	70%

2.2 Compared Parameters

Parameter	Planned	Actual	Parameter	Planned	Actual
Instrument	ACIS	ACIS	Obspar format version number	6	6
Detector	ACIS-5678	ACIS-5678	Obspar file type	PREDICTED	ACTUAL
Grating	HETG	HETG	Obspar update status	NONE	UPDATED
Data mode	FAINT	FAINT	On-chip summing requested	N	N
Observation mode	POINTING	POINTING	Subarray requested	CUSTOM	CUSTOM
Pointing RA	161.226285	161.2685563446137	Subarray start row	15	15
Pointing Dec	-59.677122	-59.69400674588034	Subarray row count	440	440
Pointing Roll	290.652289	290.8454042872878	Alternating exposures requested	N	N
SIM focus pos (mm)	-0.684267	-0.6828225247311905	Primary exposure time	0.000000	1.4
SIM defocus (mm)	0	0.001444936568705701			
SIM translation stage pos (mm)	-183.332523	-183.3212429520412			
SIM translation stage offset (mm)	-6.8	-6.811279630966652			
Phase constraints	Y	Y			
Phase period	2016.000000	2016.000000			
Phase epoch	50794.000000	50794.000000			
Phase start	0.970000	0.970000			
Phase end	0.980000	0.980000			
Phase start error	0.005000	0.005000			
Phase end error	0.005000	0.005000			
Observation start time	168265026.184000	168263840.19635			
Observation start date	2003-05-02T12:16:02	2003-05-02T11:57:20			
Observation end time	168362249.184000	168362564.10052			
Observation end date	2003-05-03T15:16:25	2003-05-03T15:22:44			
Read mode	TIMED	TIMED			

2.3 Aspect



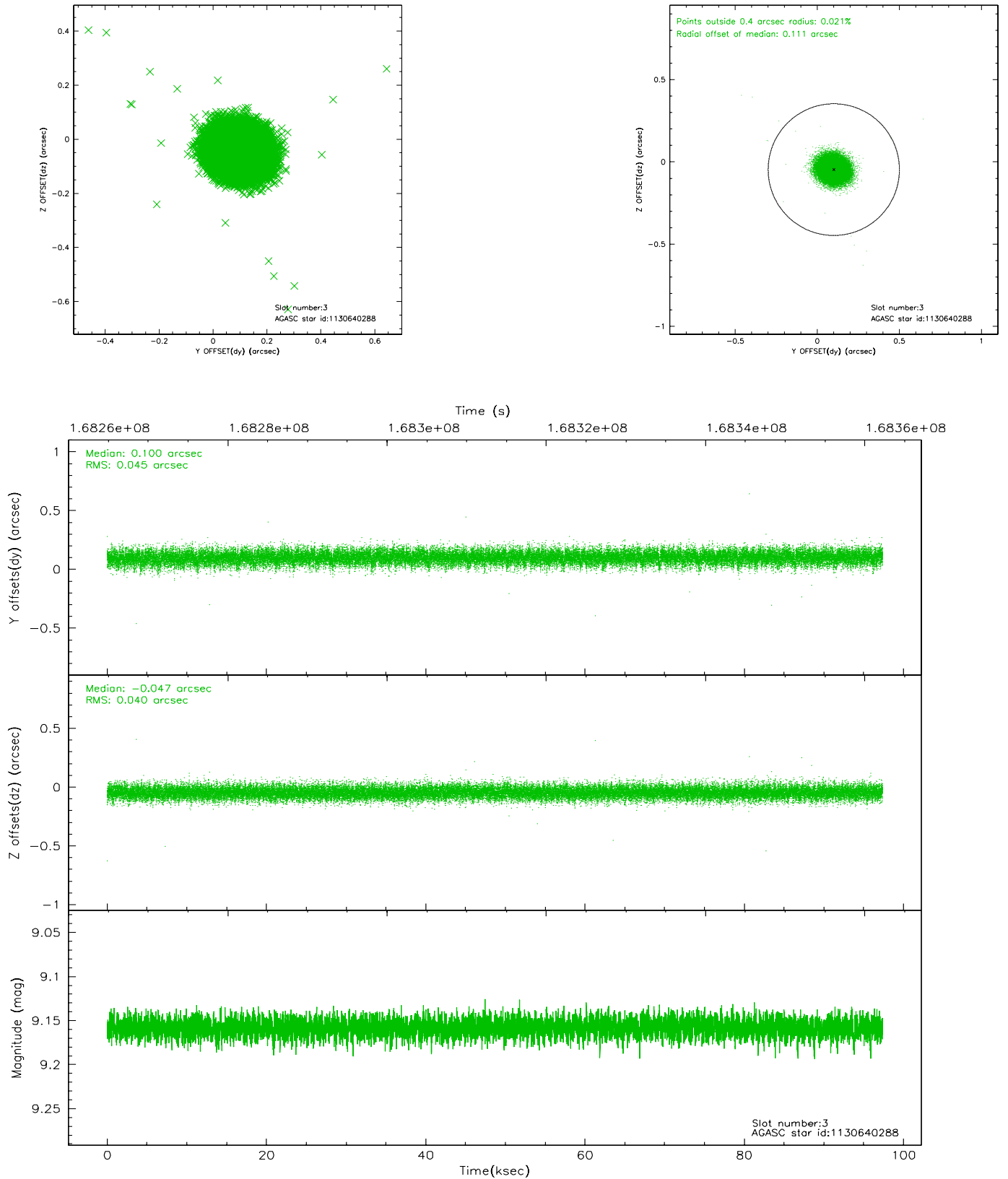


Slot Statistics

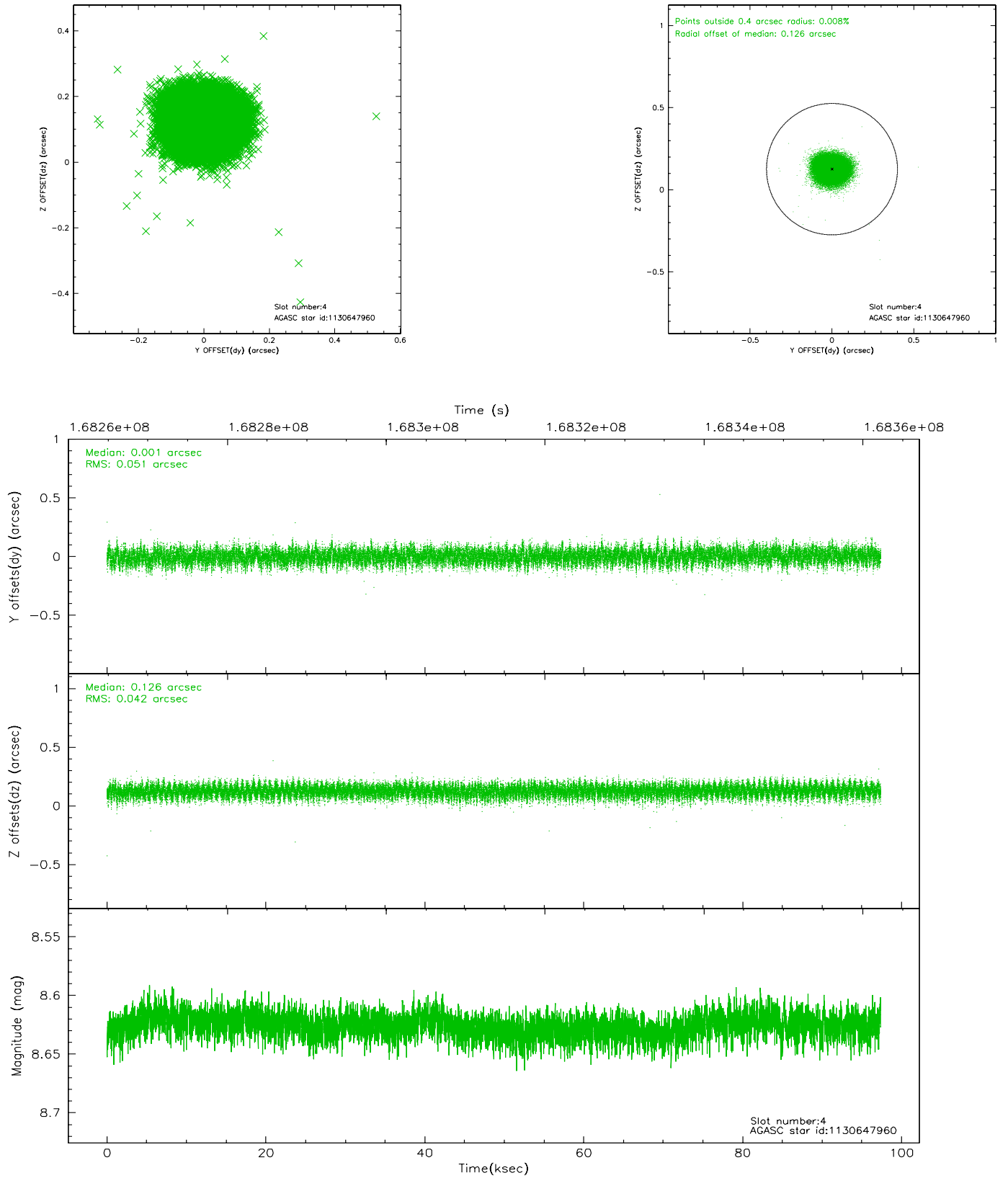
slot	status	id	mag	n_pts	med_dy	med_dz	dr1	dr2	ra	dec	mean_y	mean_z
0	FID	ACIS-S-1	7.20	23652	0.039	0.167	0.007	0.012	0.000000	0.000000	940.33	-1864.48
1	FID	ACIS-S-4	7.19	23630	-0.042	-0.130	0.006	0.011	0.000000	0.000000	2157.64	39.44
2	FID	ACIS-S-5	7.23	23635	-0.023	-0.025	0.006	0.012	0.000000	0.000000	-1808.68	33.09
3	GUIDE	1130640288	9.16	47341	0.100	-0.047	0.063	0.104	160.869759	-59.100305	-2173.59	115.01
4	GUIDE	1130647960	8.63	47356	0.001	0.126	0.070	0.113	160.287471	-59.247776	-2044.18	-1076.06
5	GUIDE	1130645296	9.09	47323	0.029	-0.132	0.097	0.152	162.541185	-59.548371	434.72	2399.87
6	GUIDE	1174021440	8.43	47344	0.002	0.015	0.067	0.106	160.869011	-60.314711	1924.96	-1406.01
7	GUIDE	1174033752	8.46	47344	-0.134	0.038	0.060	0.097	162.418977	-60.164599	2413.63	1373.39

2.4 Star Slots

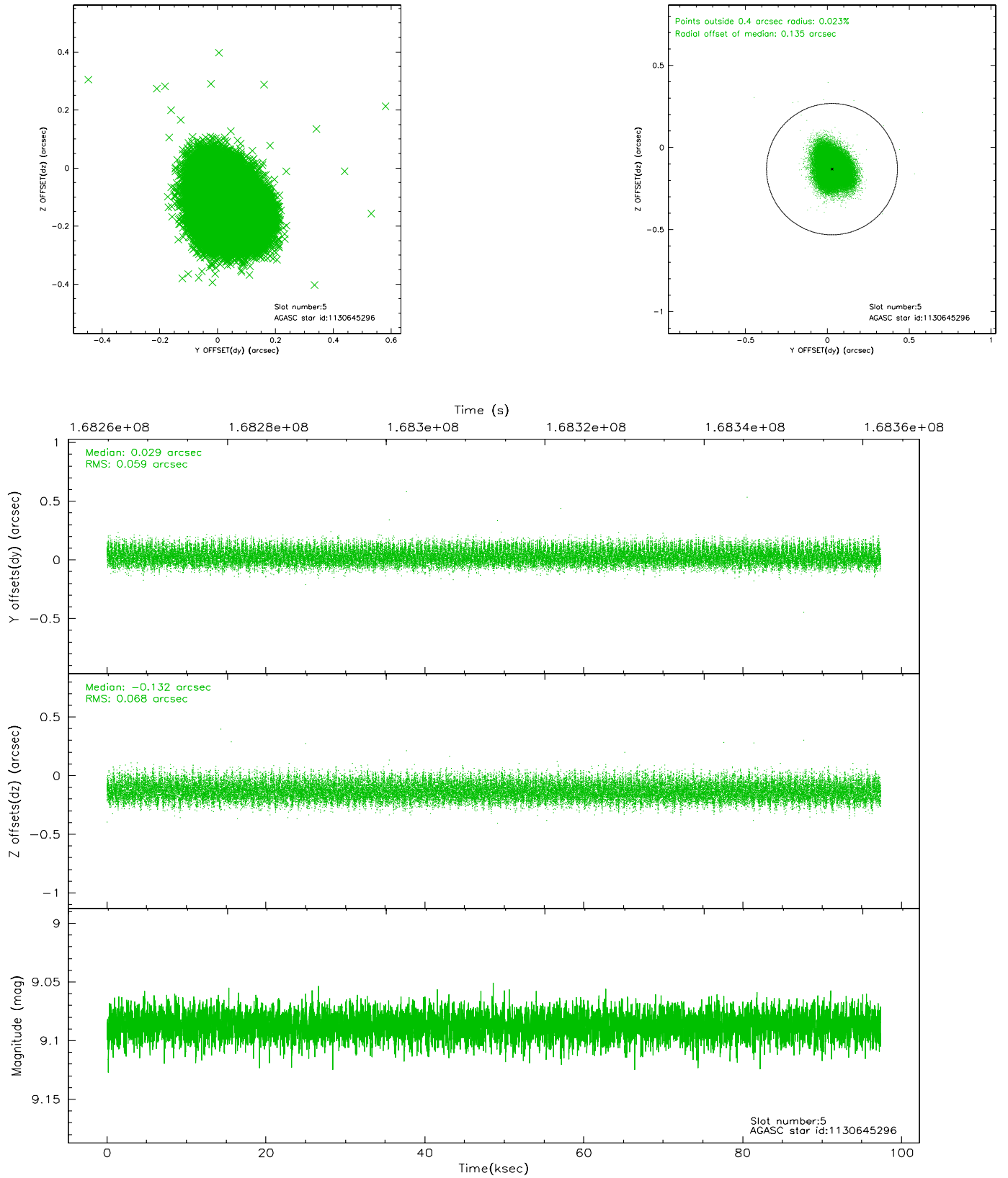
2.4.1 Slot 3



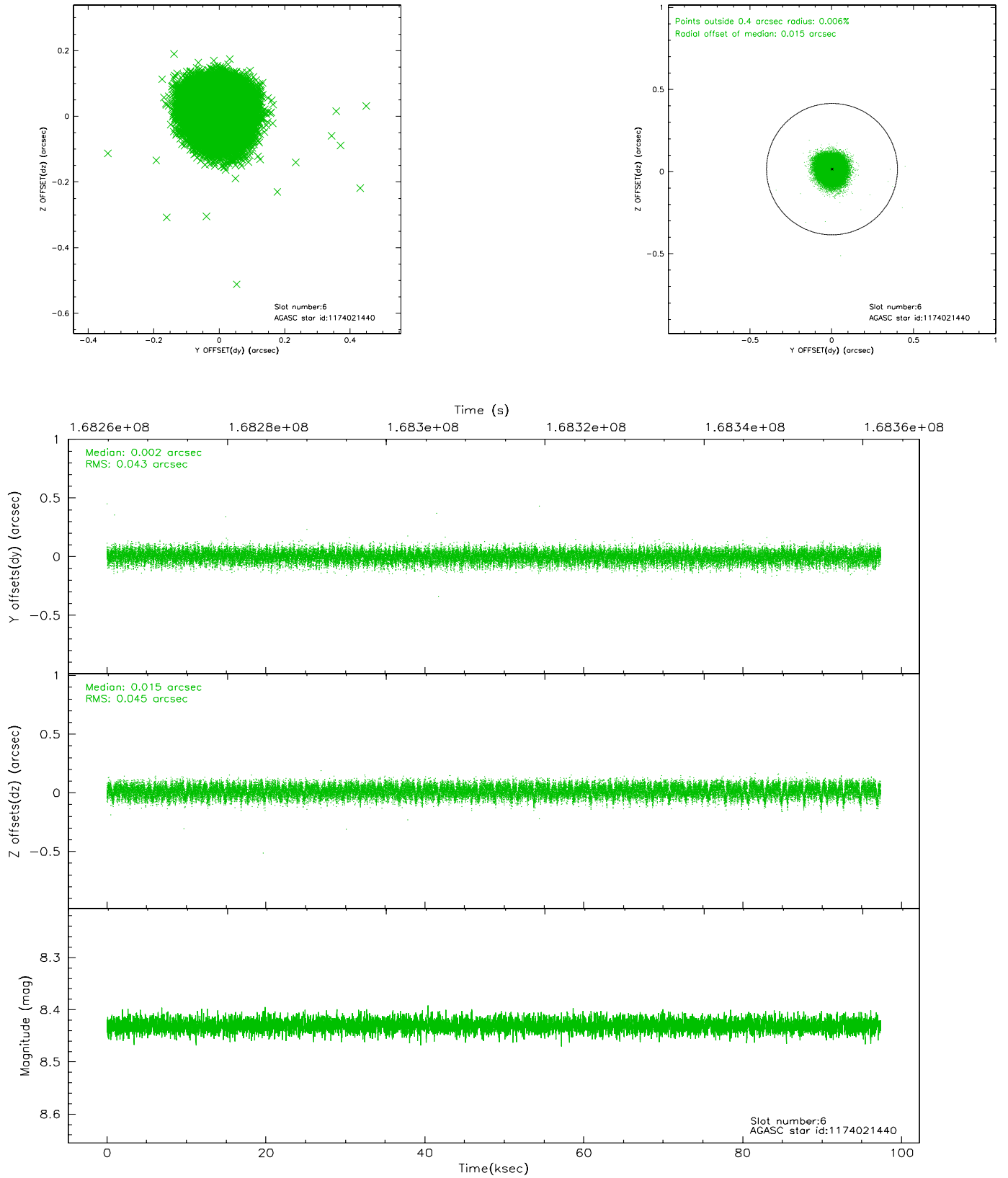
2.4.2 Slot 4



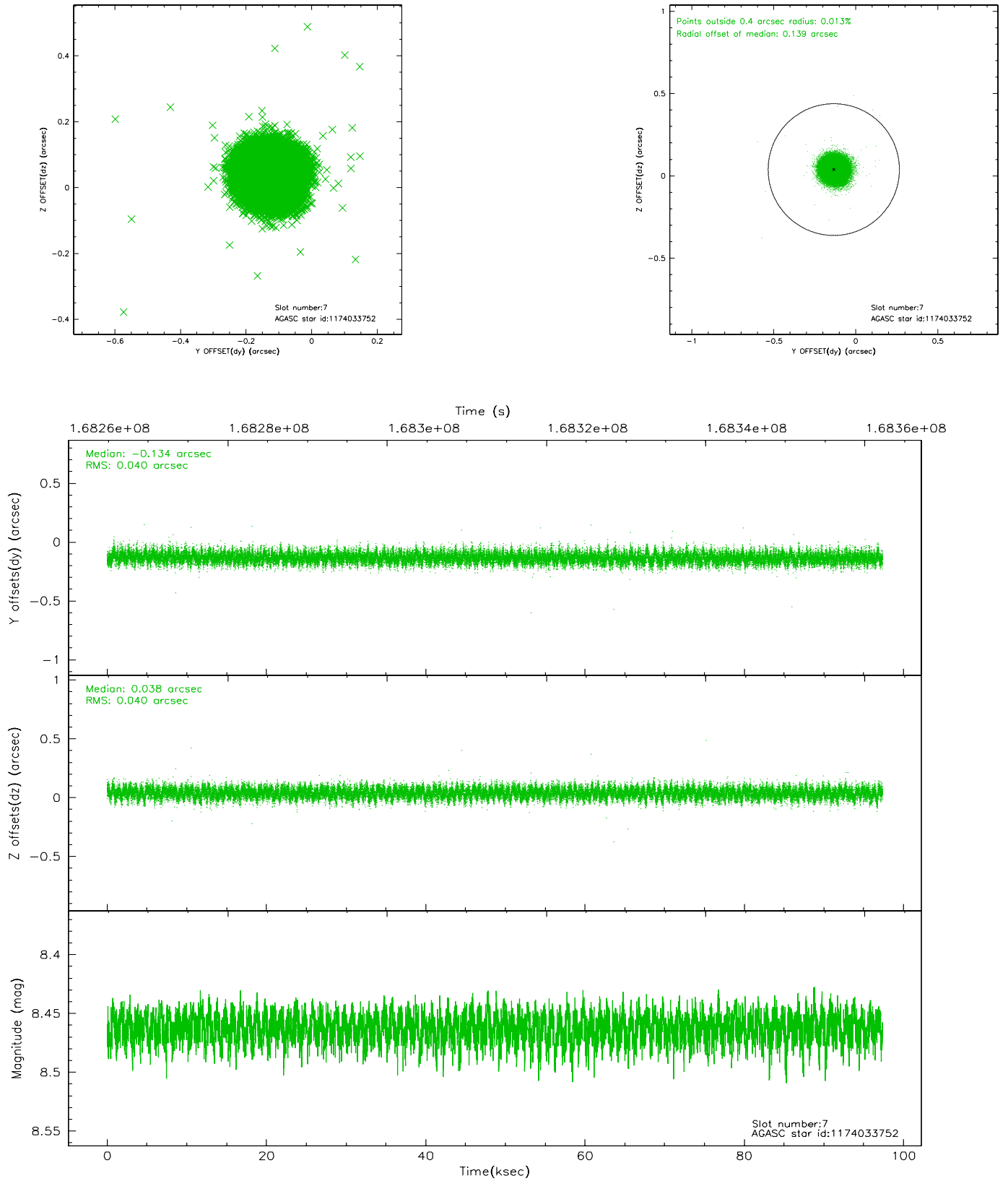
2.4.3 Slot 5



2.4.4 Slot 6

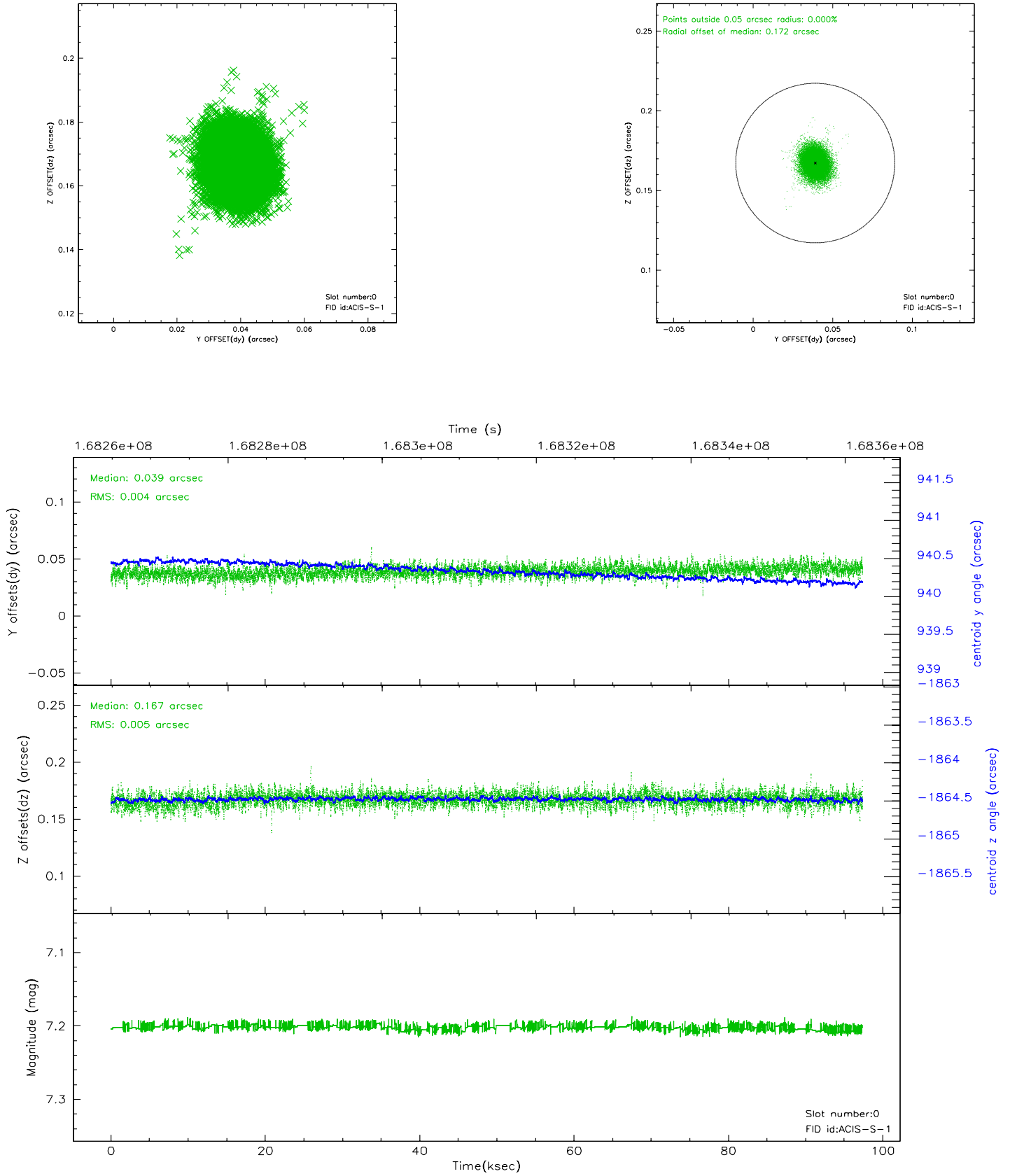


2.4.5 Slot 7

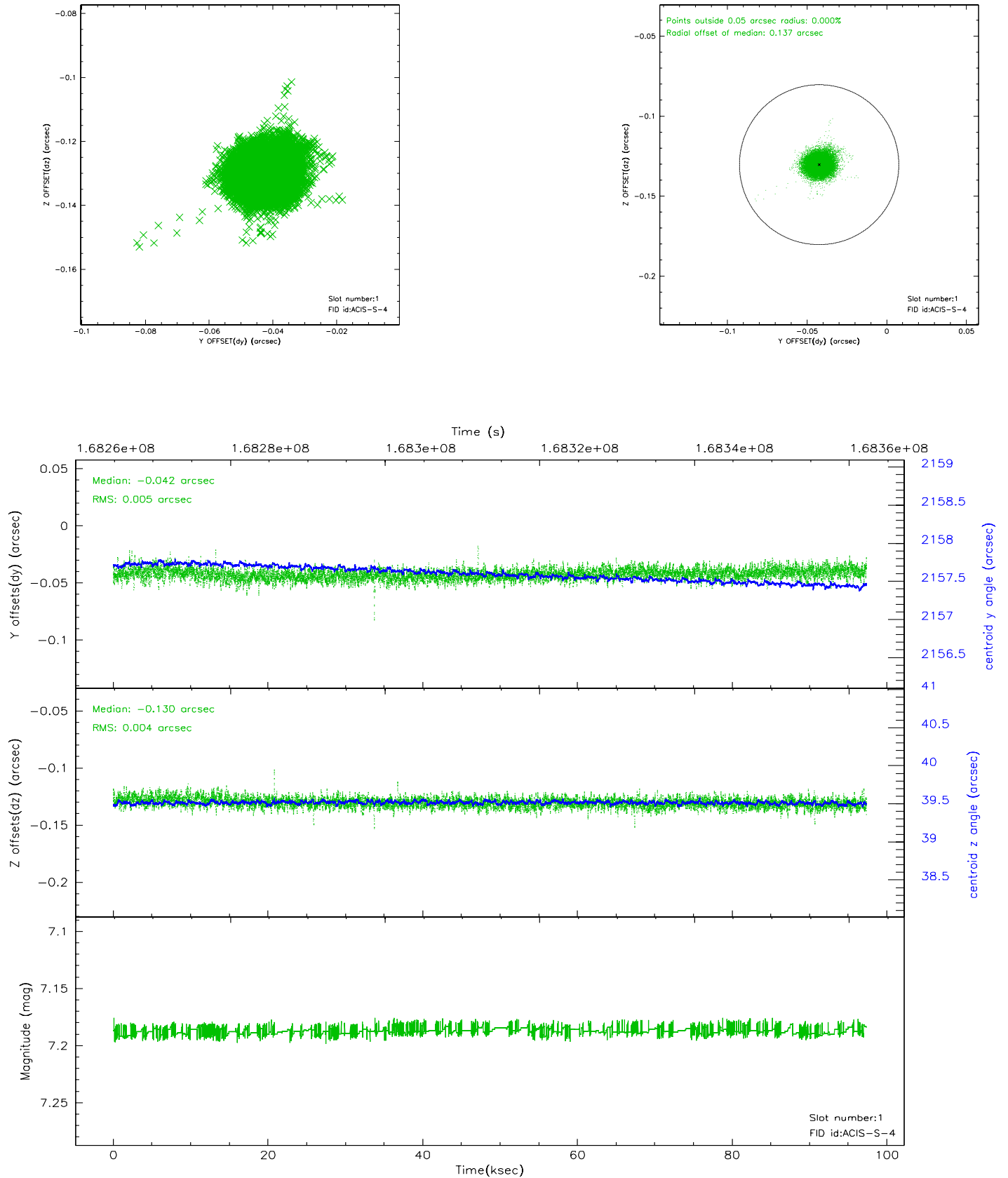


2.5 FID Slots

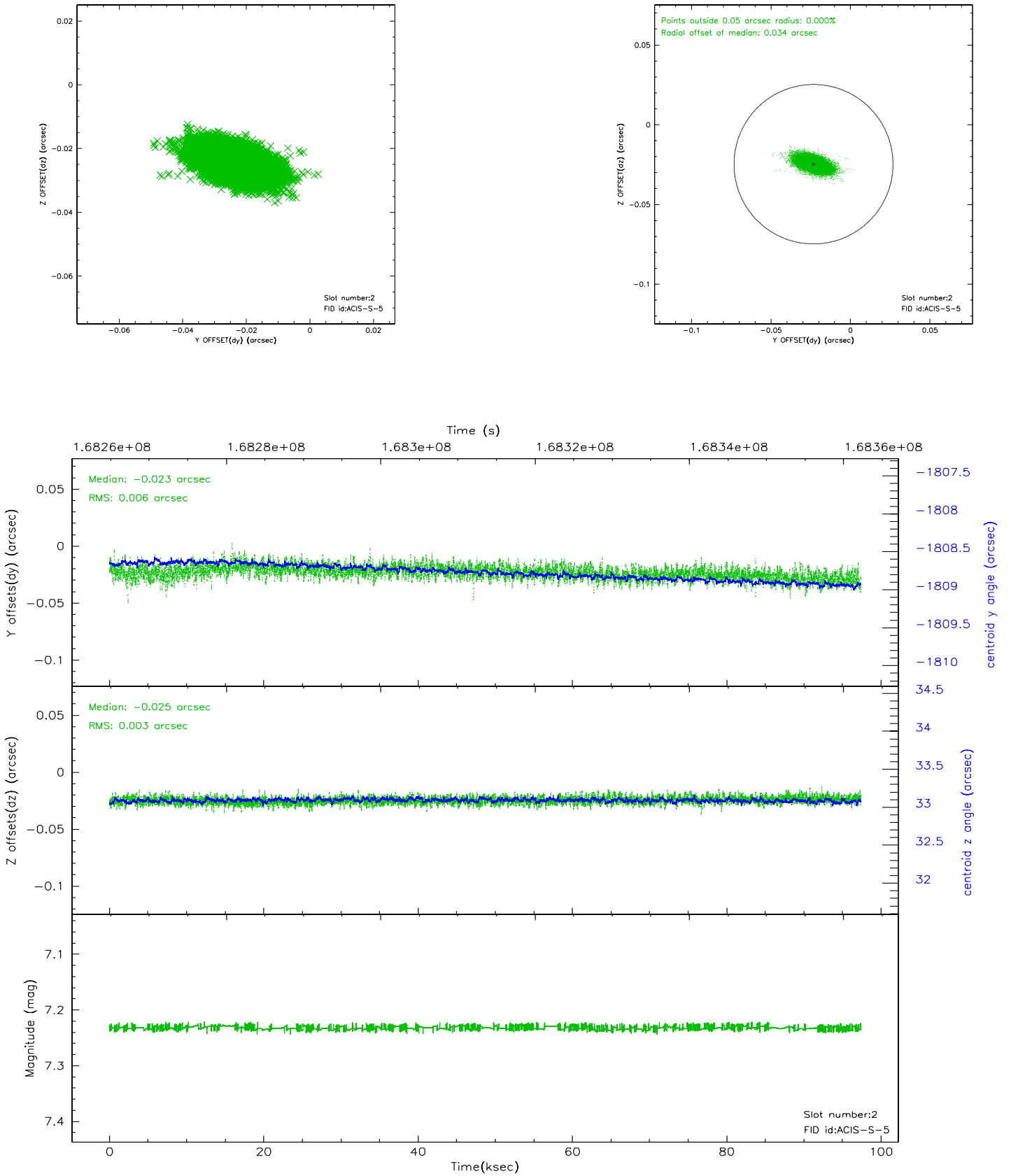
2.5.1 Slot 0



2.5.2 Slot 1



2.5.3 Slot 2

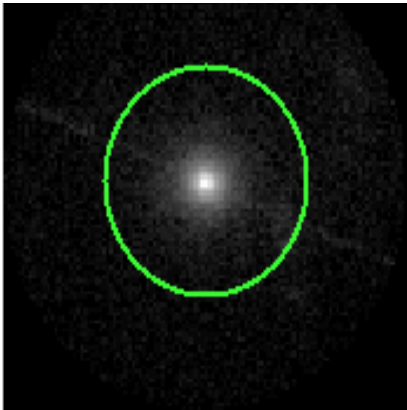


3 Gratings

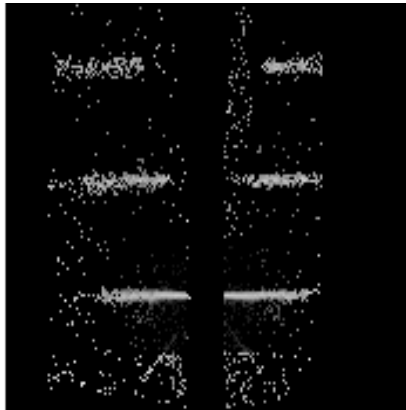
3.1 HEG Arm



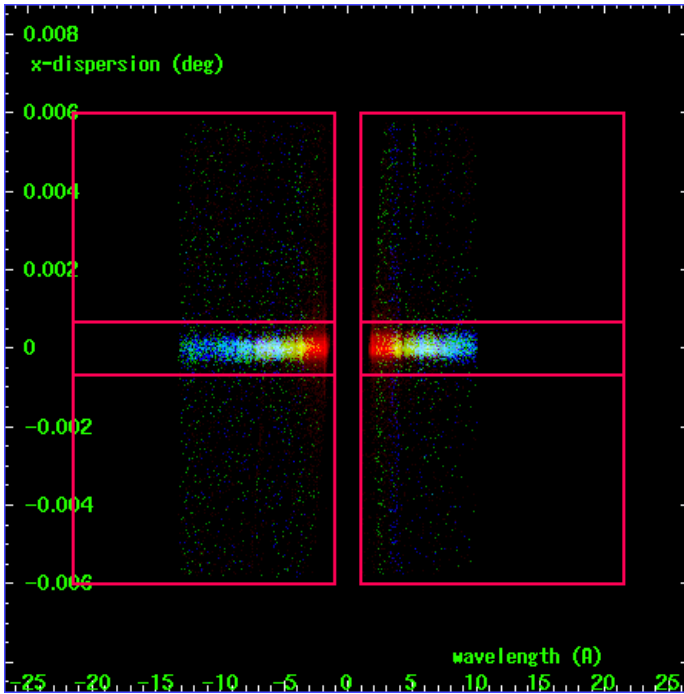
HEG Order Sort 123



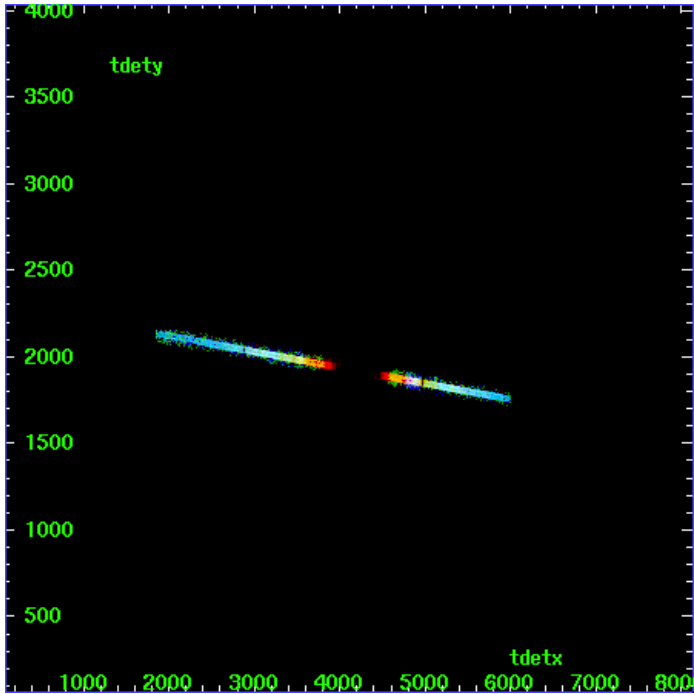
HEG Zero Order



HEG Order Sort ALL

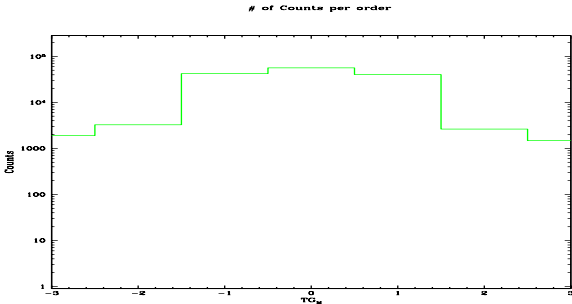


Spot Image HEG

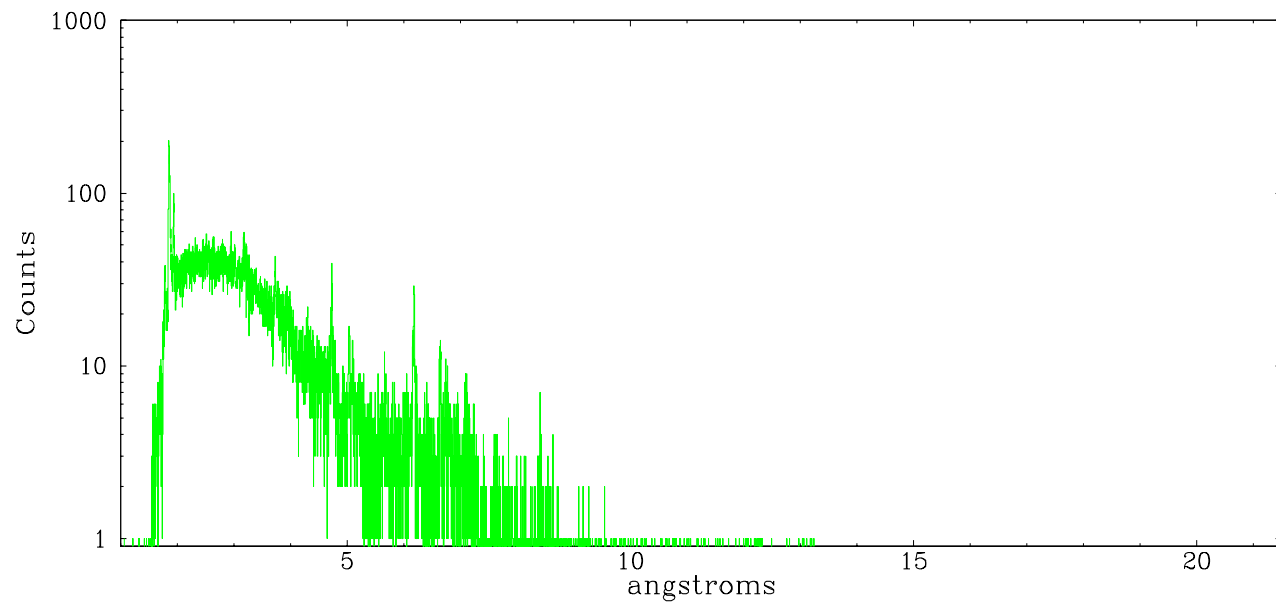


Full Detector HEG

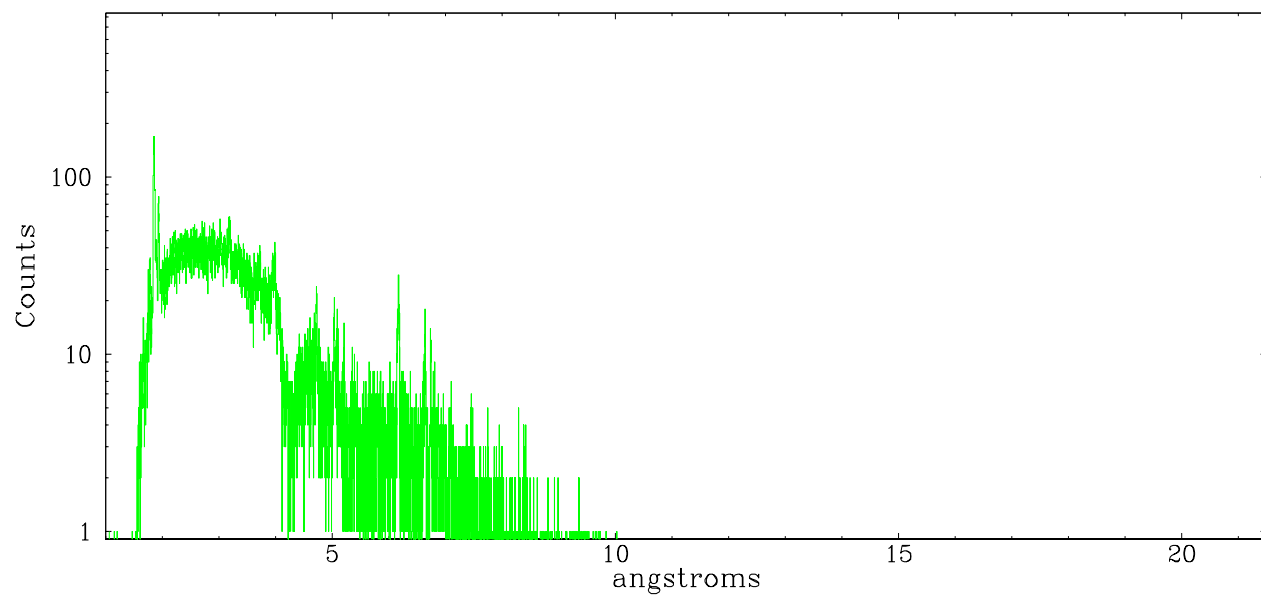
	order -3	order -2	order -1	order 0	order 1	order 2	order 3
Events	1896	3270	42242	56543	40361	2636	1477



heg order -1



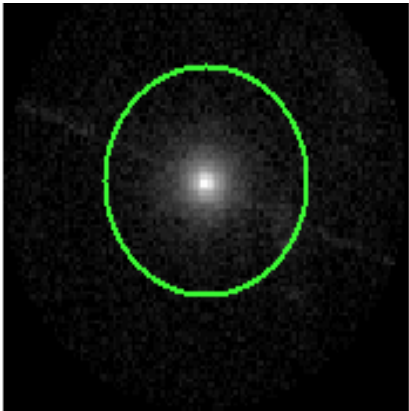
heg order +1



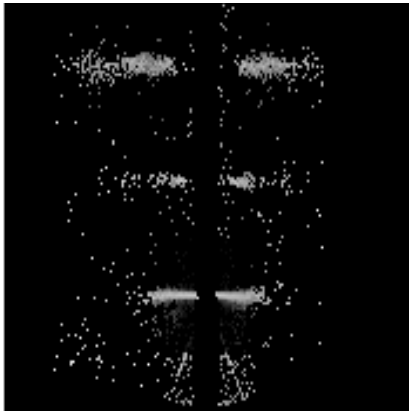
3.2 MEG Arm



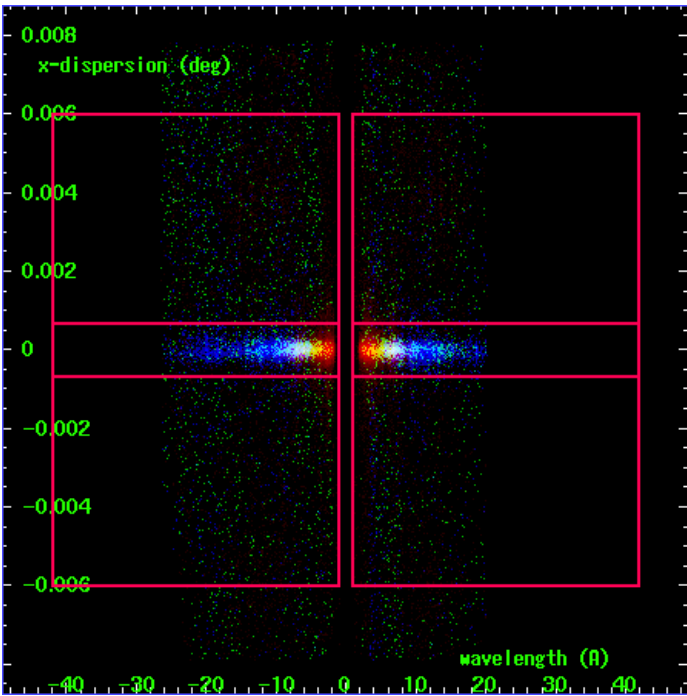
MEG Order Sort 123



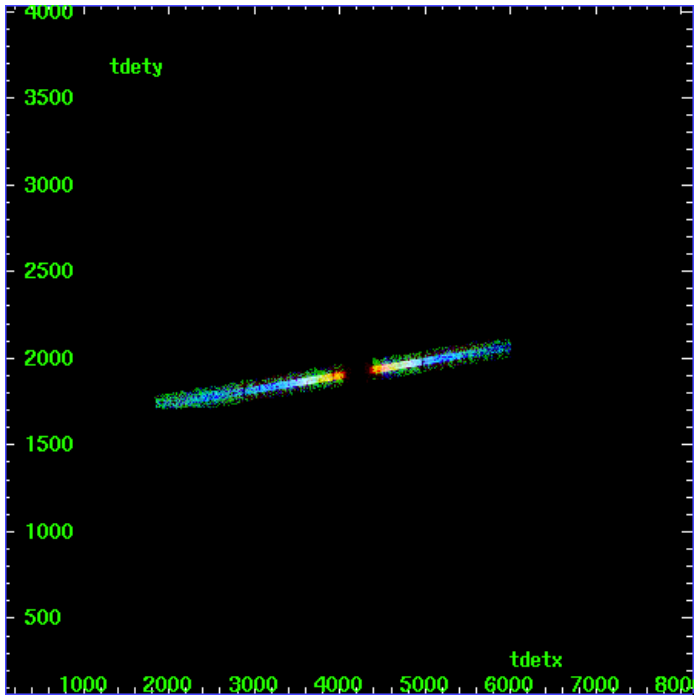
MEG Zero Order



MEG Order Sort ALL

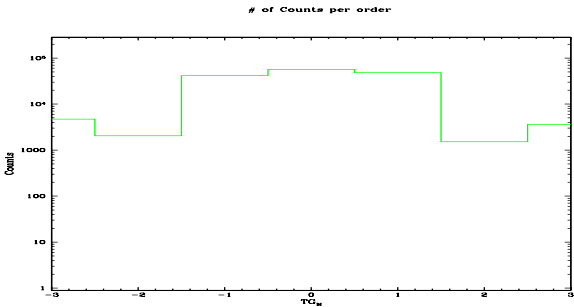


Spot Image MEG

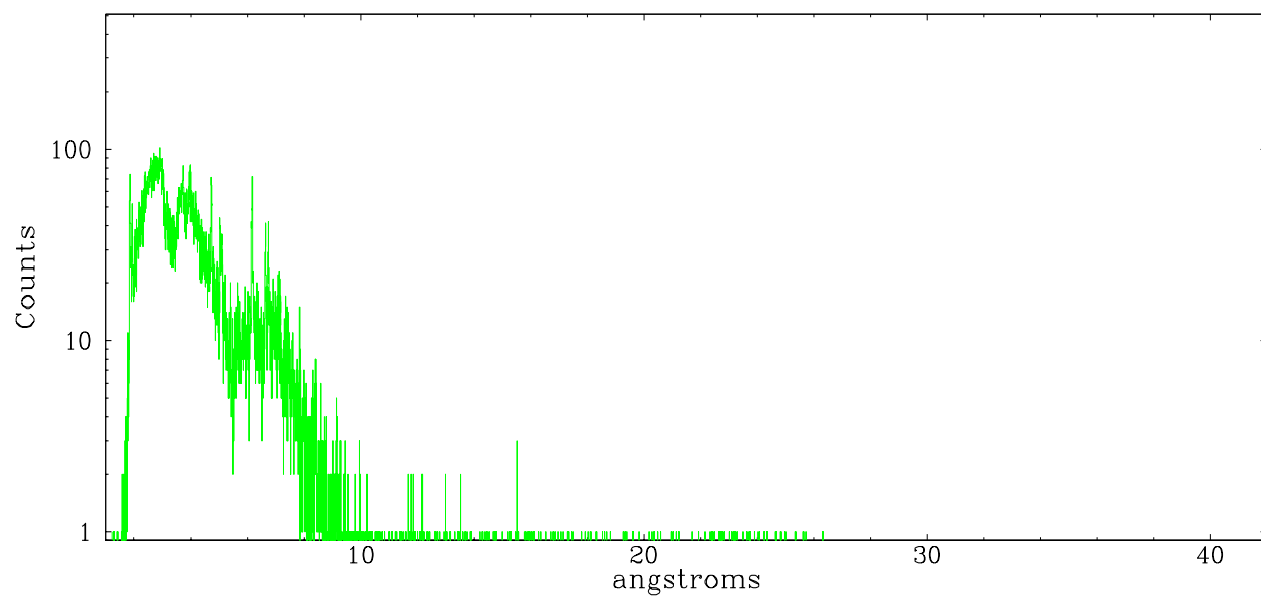


Full Detector MEG

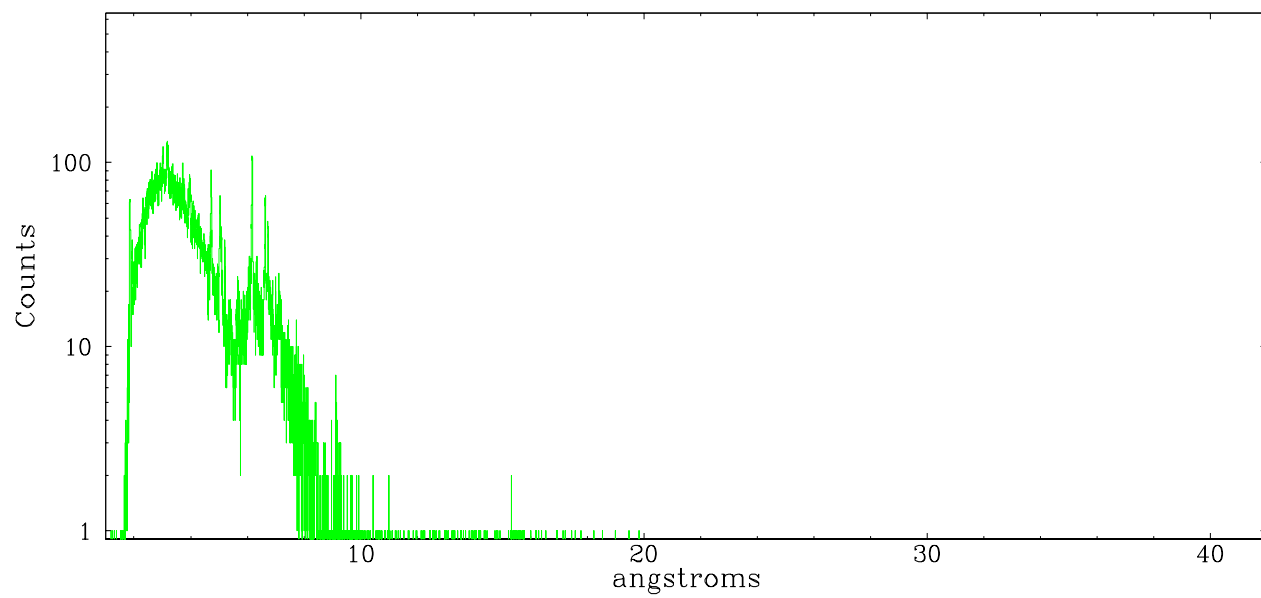
	order -3	order -2	order -1	order 0	order 1	order 2	order 3
Events	4717	2048	41640	56543	48130	1514	3607



meg order -1



meg order +1



A Summary

A.1 Status

V&V Scientist	Beth Sundheim
V&V Date (YYYY-MM-DD)	2006.08.01
V&V Edition	1
V&V Disposition and Status	OK
V&V Charge Time	97.286

A.2 Comments