

# V&V Reference Report

## L2 ASCDS Version : 7.6.8

Observation 3615 - L2 Version 001  
Chandra X-Ray Center

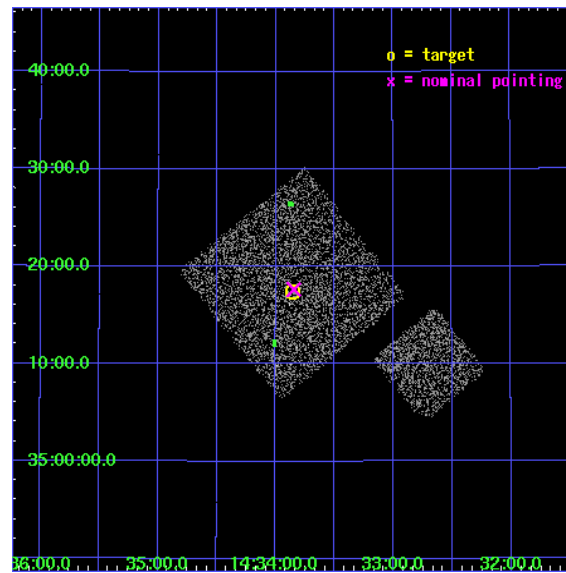
L2 Processing Date : Jul 30 2006

## Contents

<b>1</b>	<b>Front</b>	<b>2</b>
<b>2</b>	<b>OBI</b>	<b>3</b>
2.1	OBI . . . . .	3
2.1.1	Images . . . . .	3
2.1.2	Bias . . . . .	3
2.1.3	Parameters . . . . .	4
2.1.4	Events . . . . .	4
2.2	Compared Parameters . . . . .	5
2.3	Aspect . . . . .	6
2.4	Star Slots . . . . .	9
2.4.1	Slot 3 . . . . .	9
2.4.2	Slot 4 . . . . .	10
2.4.3	Slot 5 . . . . .	11
2.4.4	Slot 6 . . . . .	12
2.4.5	Slot 7 . . . . .	13
2.5	FID Slots . . . . .	14
2.5.1	Slot 0 . . . . .	14
2.5.2	Slot 1 . . . . .	15
2.5.3	Slot 2 . . . . .	16
<b>3</b>	<b>Point Sources</b>	<b>17</b>
<b>A</b>	<b>Summary</b>	<b>18</b>
A.1	Status . . . . .	18
A.2	Comments . . . . .	18

# 1 Front

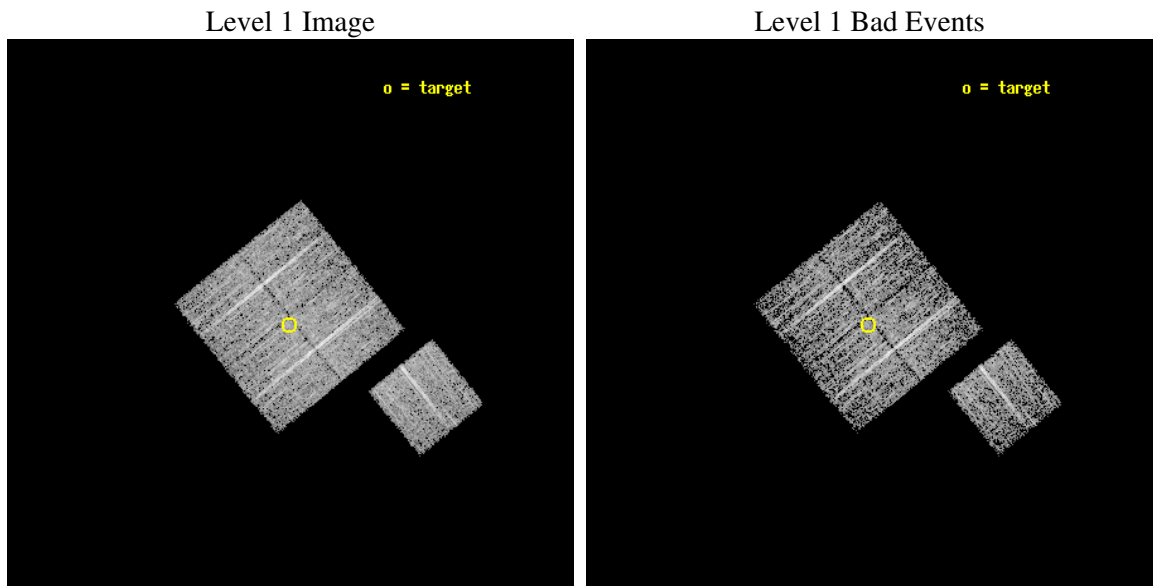
seq_num	900215
obs_id	3615
title	CHANDRA LARGE SCALE SURVEY OF THE NOAO BOOTES DEEP FIELD
observer	Dr. Stephen Murray
object	NOAO FIELD F48
dtcycle	0
cycle	P
ra_targ	218.463931
dec_targ	35.290164
ra_nom	218.4612668665
dec_nom	35.294203612178
roll_nom	141.01005177022
revision	2
ontime	4671.6590107977
livetime	4610.6203465963
ontime0	4668.5180405974
ontime1	4671.6590107977
ontime2	4674.7999910116
ontime3	4671.6590107977
ontime6	4665.3770701885
l2events	9486



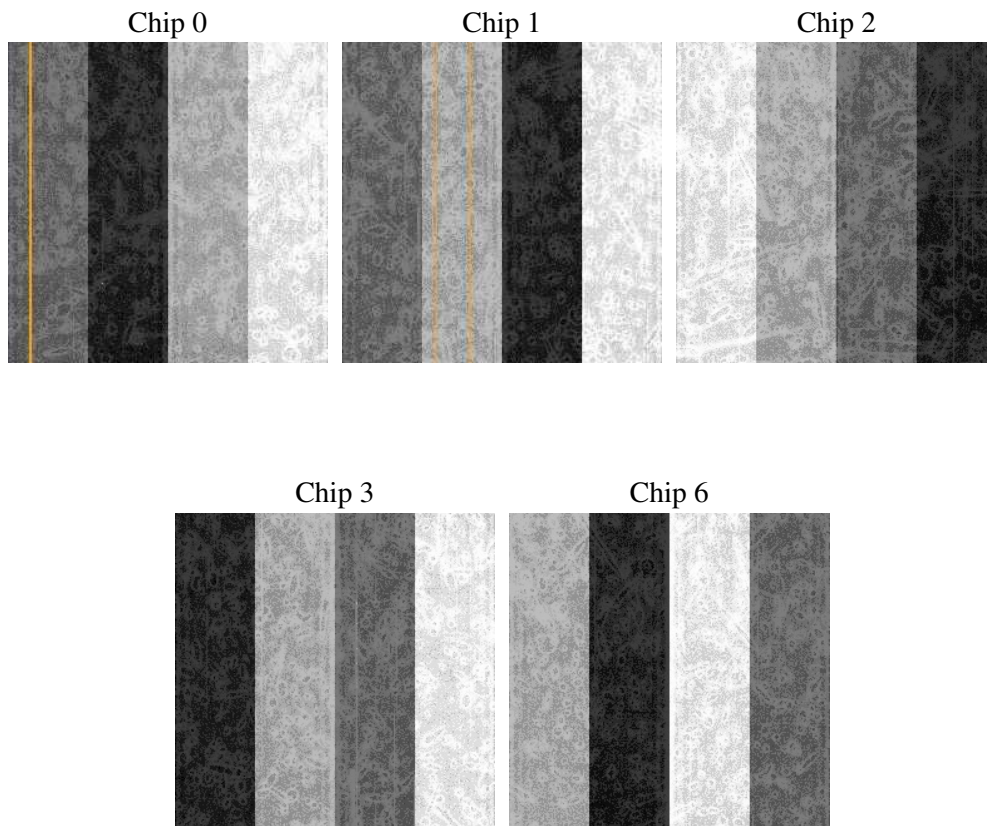
## 2 OBI

### 2.1 OBI

#### 2.1.1 Images



#### 2.1.2 Bias



### 2.1.3 Parameters

obi_num	1
ascdsver	7.6.8
caldbver	3.2.2
date	2006-07-30T02:28:51
revision	2

sched_exp_time	4900.000000
ontime	4676.9607471228
ontime0	4673.8197569847
ontime1	4676.9607471228
ontime2	4680.1017273366
ontime3	4676.9607471228
ontime6	4670.6788065135
l1events	115029

### 2.1.4 Events

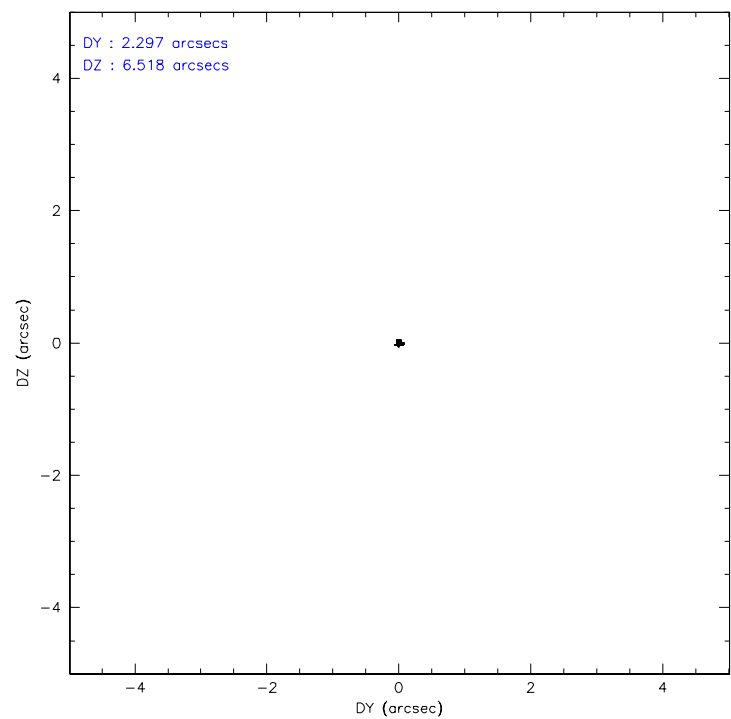
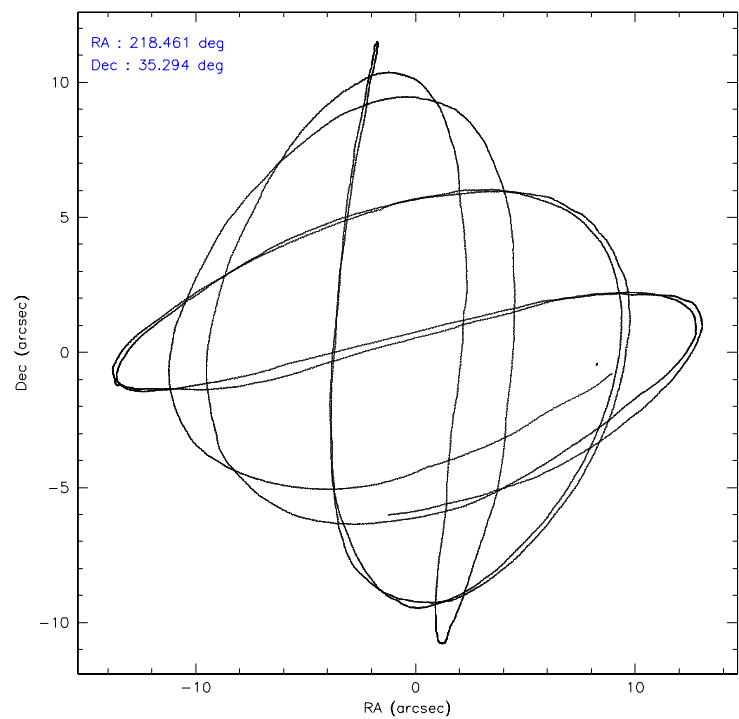
	ccd 0	ccd 1	ccd 2	ccd 3	ccd 6
level 1 events	21910	22298	24664	23221	22936
rejected events	19593	19939	22417	20983	20540
rejected %	89%	89%	90%	90%	89%

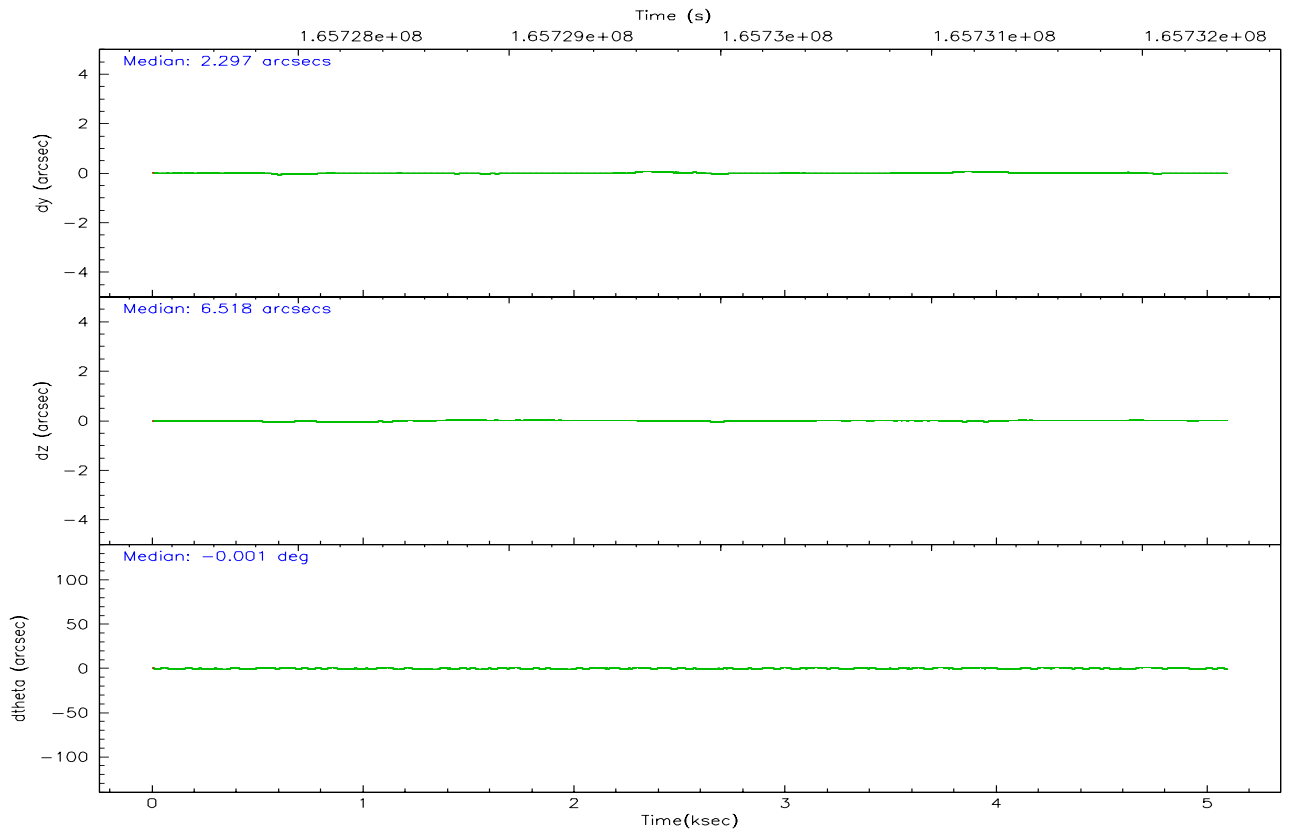
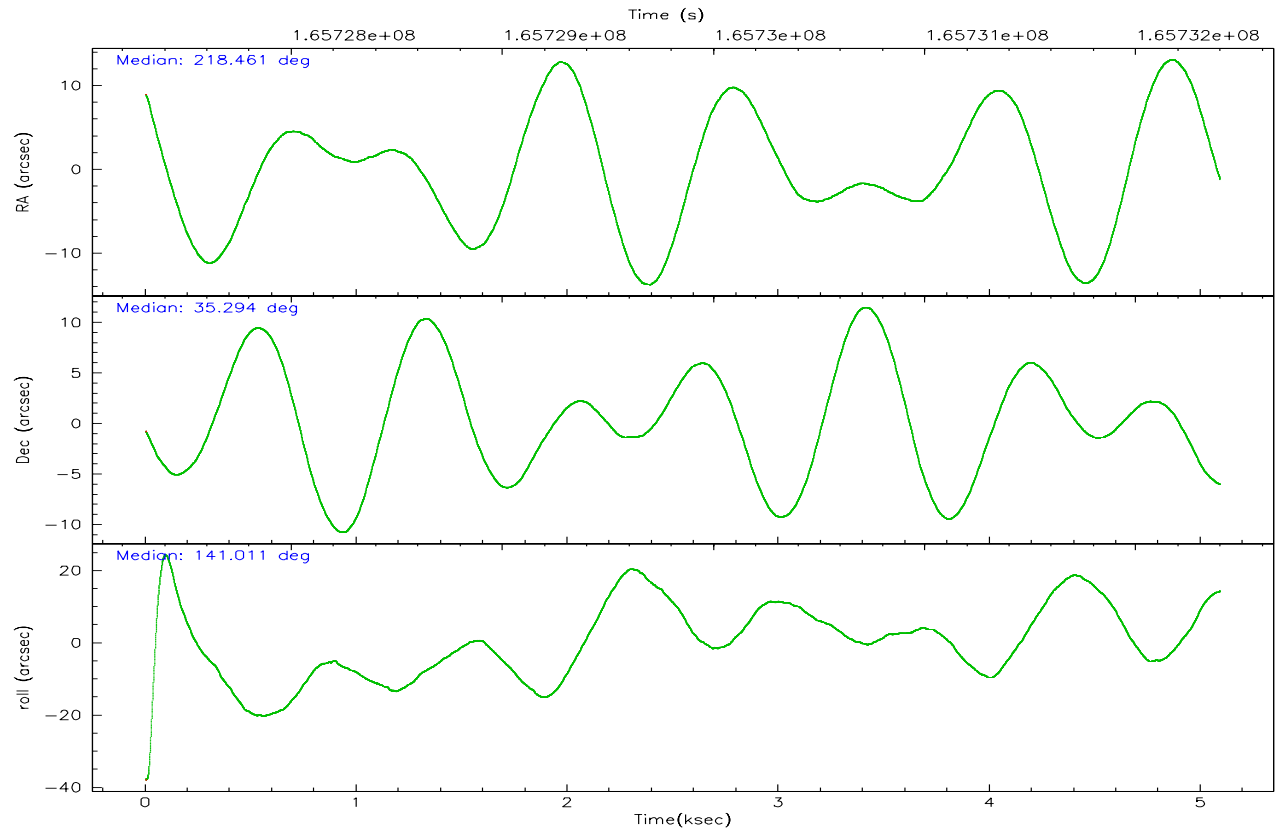
	ccd 0	ccd 1	ccd 2	ccd 3	ccd 6
grade 0 events	844	835	809	893	846
	3%	3%	3%	3%	3%
grade 1 events	12	11	13	11	14
	0%	0%	0%	0%	0%
grade 2 events	532	517	504	443	512
	2%	2%	2%	1%	2%
grade 3 events	309	288	263	248	277
	1%	1%	1%	1%	1%
grade 4 events	229	295	293	263	275
	1%	1%	1%	1%	1%
grade 5 events	661	746	651	792	739
	3%	3%	2%	3%	3%
grade 6 events	407	425	381	394	491
	1%	1%	1%	1%	2%
grade 7 events	18916	19181	21750	20177	19782
	86%	86%	88%	86%	86%

## 2.2 Compared Parameters

Parameter	Planned	Actual	Parameter	Planned	Actual
Instrument	ACIS	ACIS	Obspar format version number	6	6
Detector	ACIS-01236	ACIS-01236	Obspar file type	PREDICTED	ACTUAL
Grating	NONE	NONE	Obspar update status	NONE	UPDATED
Data mode	VFAINT	VFAINT	On-chip summing requested	N	N
Observation mode	POINTING	POINTING	Subarray requested	NONE	NONE
Pointing RA	218.494419	218.4612668665044	Alternating exposures requested	N	N
Pointing Dec	35.290086	35.29420361217811	Primary exposure time	0.000000	3.1
Pointing Roll	140.782386	141.0100517702163			
SIM focus pos (mm)	-0.782348	-0.7809083437167272			
SIM defocus (mm)	0	0.001439871863259334			
SIM translation stage pos (mm)	-233.592463	-233.5874344608287			
SIM translation stage offset (mm)	0	-0.005018542100998502			
Observation start time	165727507.184000	165727132.16413			
Observation start date	2003-04-03T03:24:03	2003-04-03T03:18:52			
Observation end time	165732407.184000	165732541.60186			
Observation end date	2003-04-03T04:45:43	2003-04-03T04:49:01			
Read mode	TIMED	TIMED			

2.3 Aspect





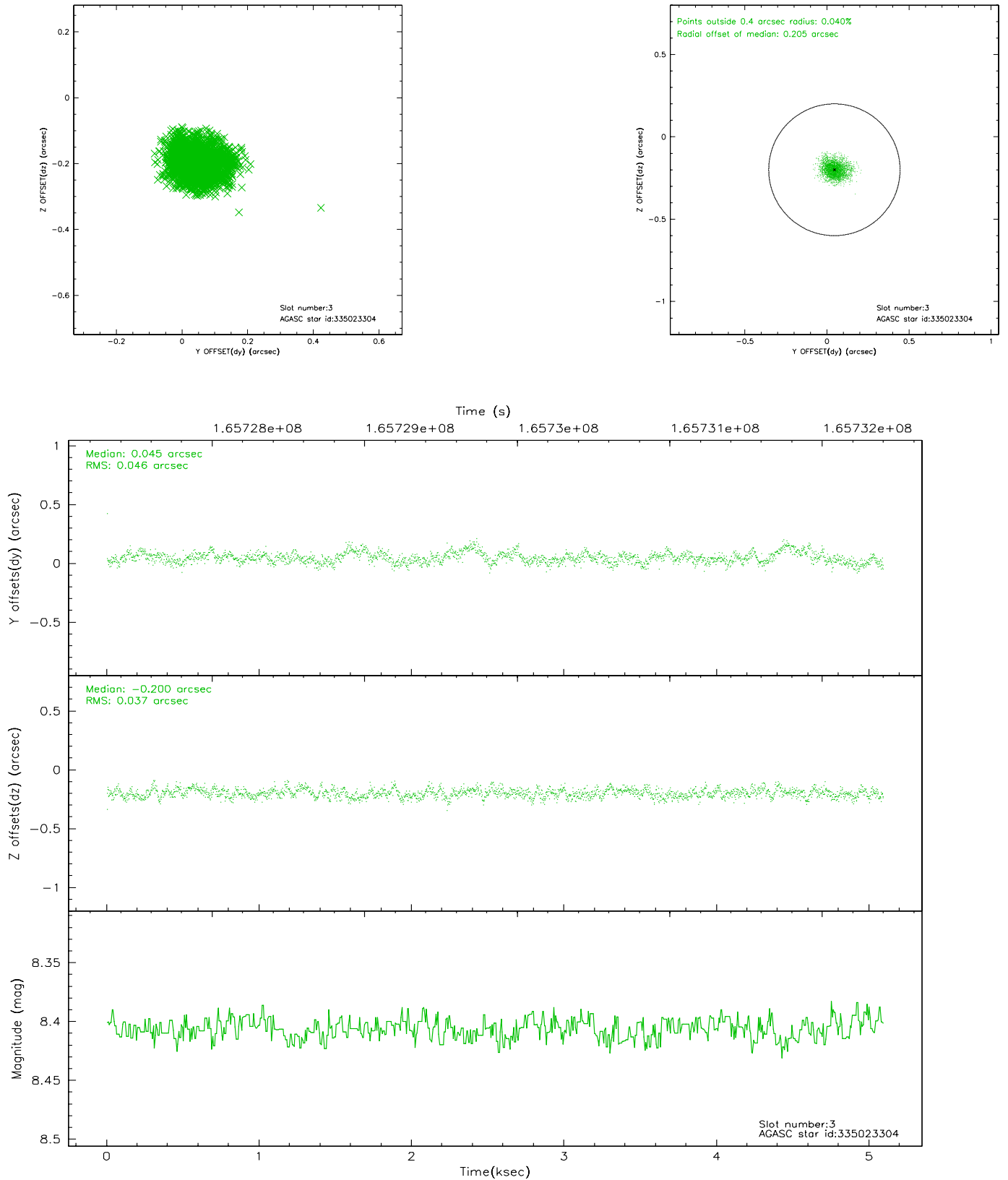
### Slot Statistics

slot	status	id	mag	n_pts	med_dy	med_dz	dr1	dr2	ra	dec	mean_y	mean_z
0	FID	ACIS-I-1	7.25	1242	-0.012	0.024	0.006	0.011	0.000000	0.000000	937.48	-829.89
1	FID	ACIS-I-5	7.24	1242	-0.046	0.041	0.006	0.010	0.000000	0.000000	-1809.95	1067.08
2	FID	ACIS-I-6	7.26	1242	-0.034	0.005	0.006	0.011	0.000000	0.000000	401.76	1712.85
3	GUIDE	335023304	8.41	2484	0.045	-0.200	0.061	0.102	218.883608	34.686545	-2264.45	953.02
4	GUIDE	335414336	8.96	2484	0.022	0.009	0.075	0.122	218.979022	35.090910	-1557.56	-349.33
5	GUIDE	335415168	9.80	2458	0.005	-0.107	0.109	0.180	217.681296	35.301767	1883.82	1470.24
6	GUIDE	335421696	8.96	2484	-0.022	0.106	0.081	0.127	218.045699	35.772449	2116.19	-518.36
7	GUIDE	335554008	9.82	2478	-0.045	0.189	0.128	0.220	219.383422	35.471863	-1597.02	-2164.03

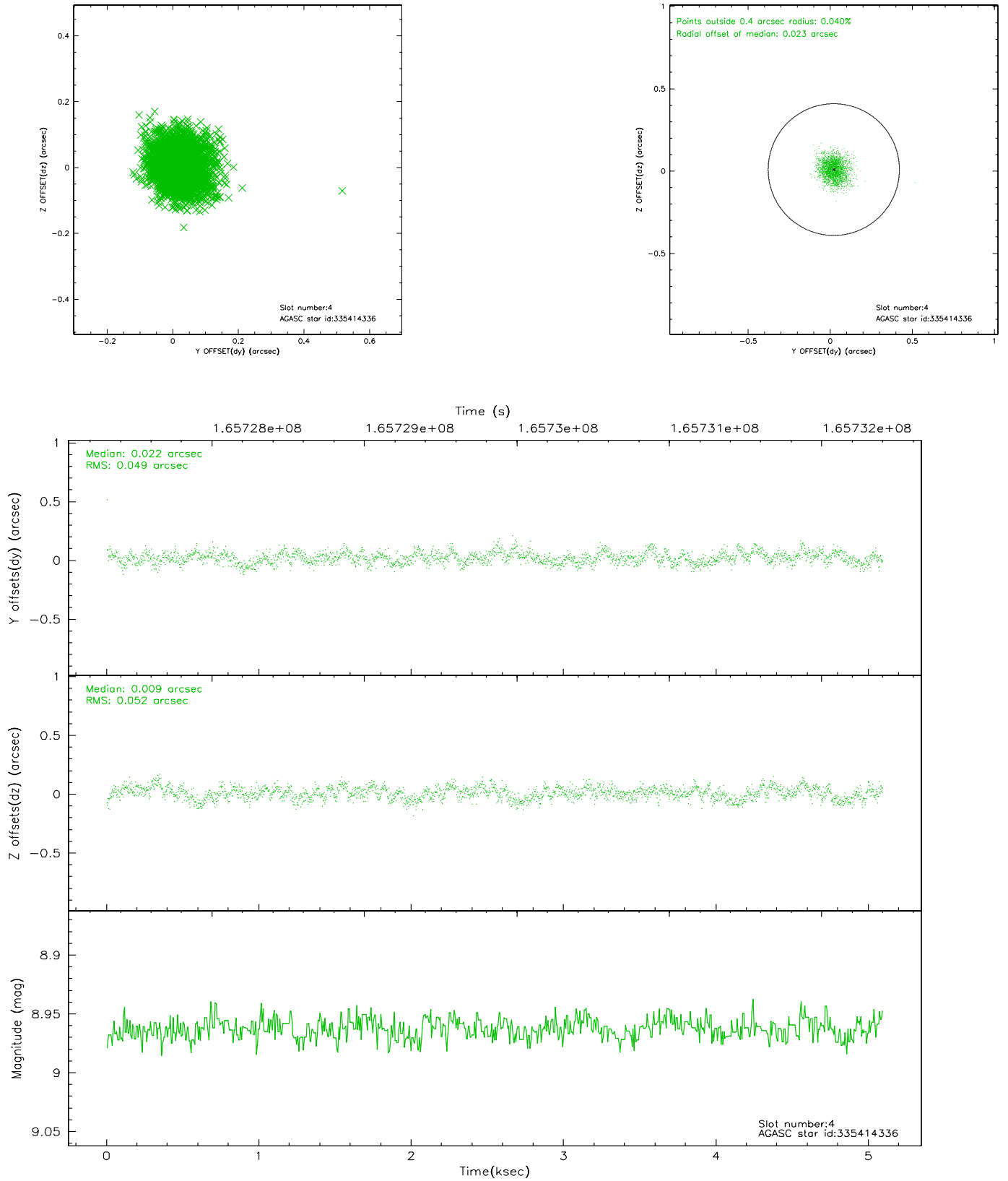


## 2.4 Star Slots

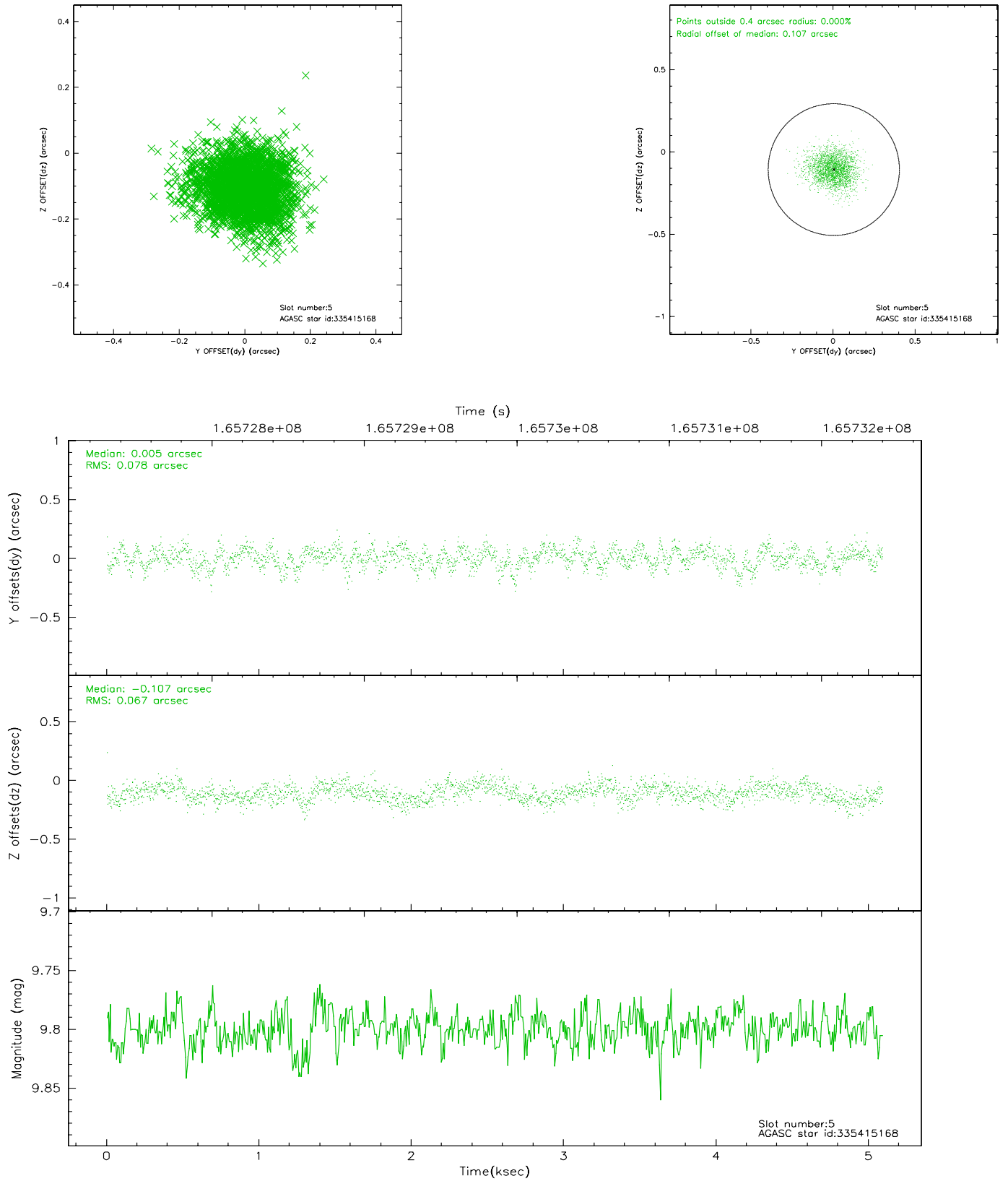
### 2.4.1 Slot 3



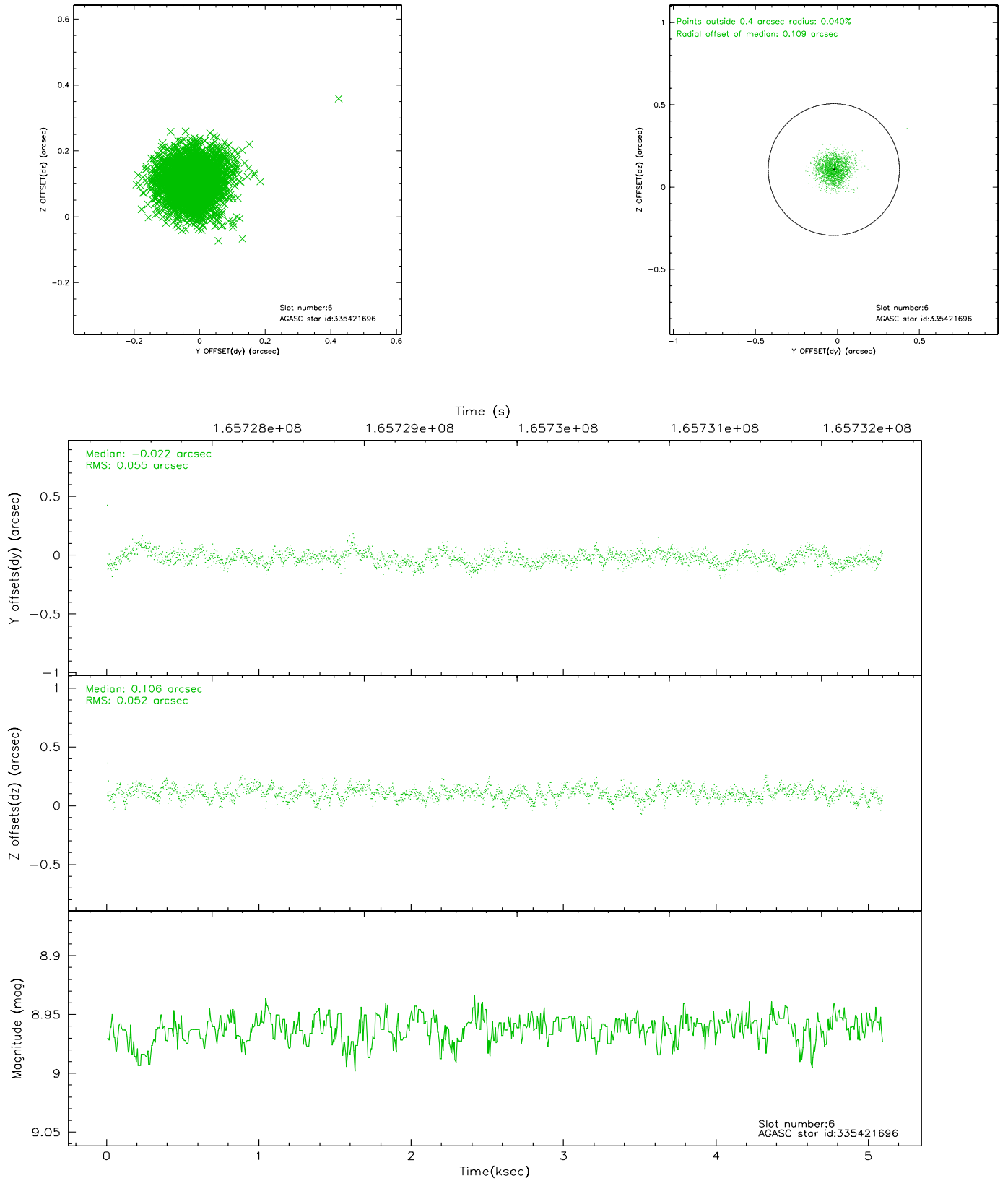
## 2.4.2 Slot 4



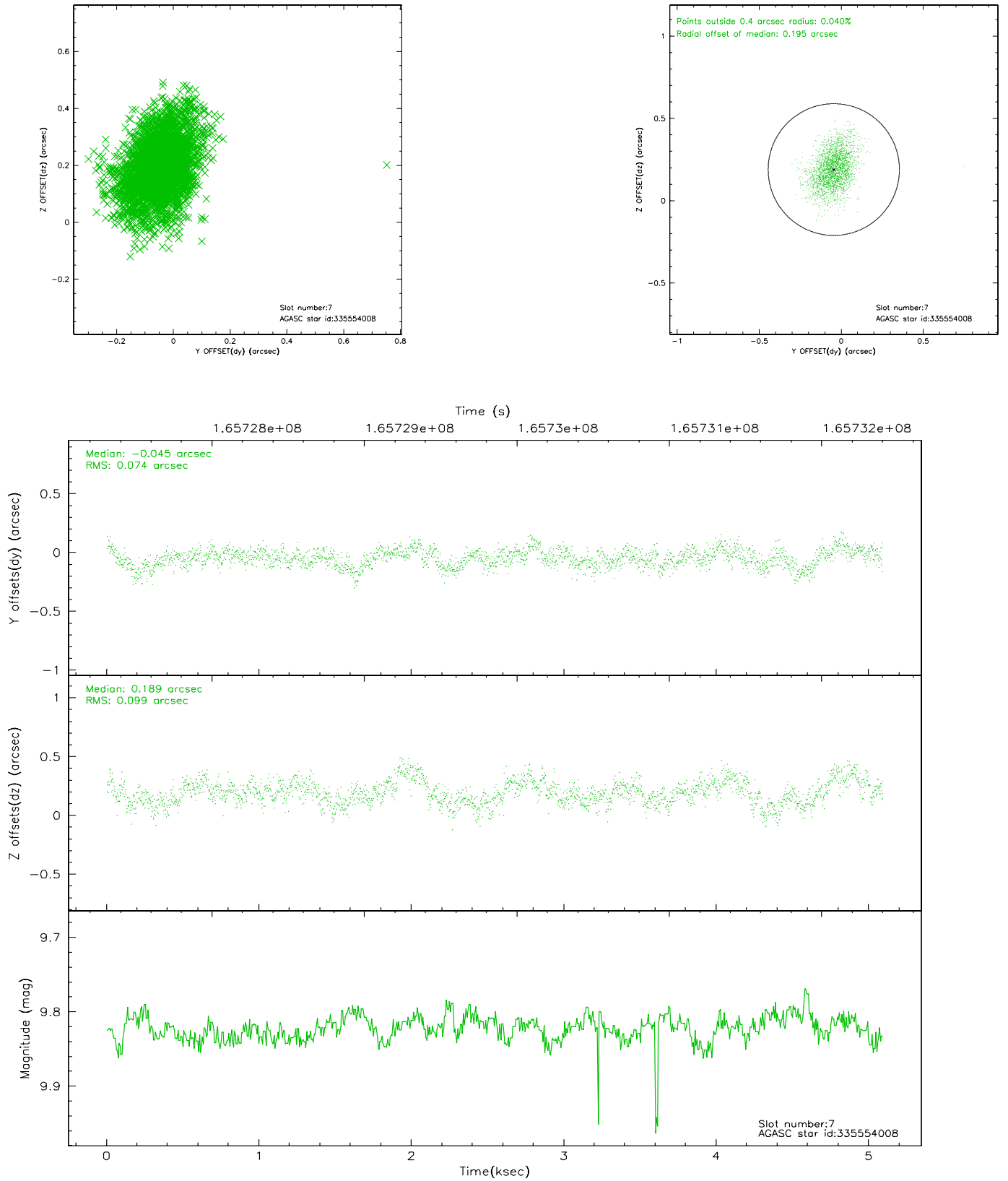
### 2.4.3 Slot 5



## 2.4.4 Slot 6

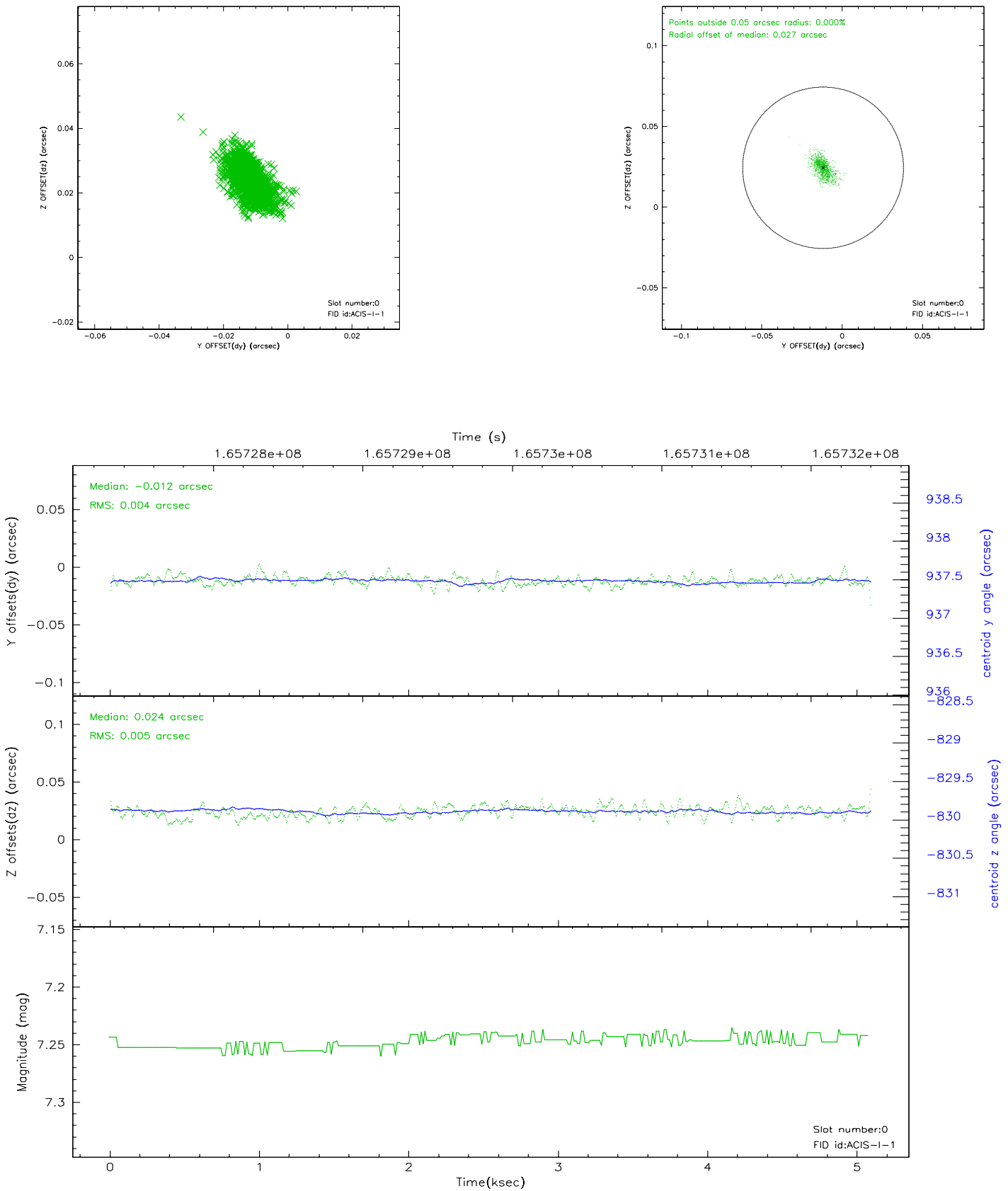


## 2.4.5 Slot 7

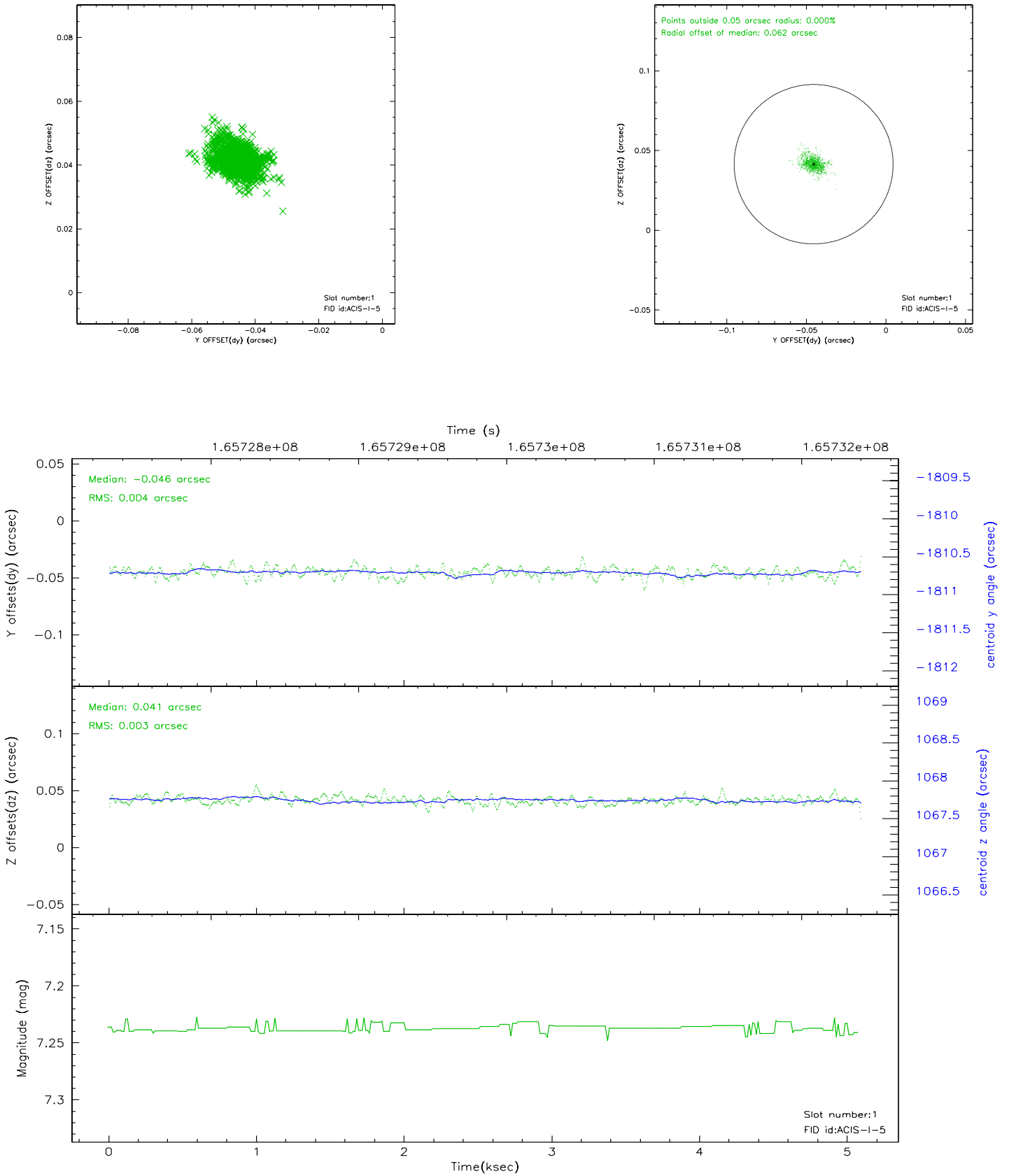


## 2.5 FID Slots

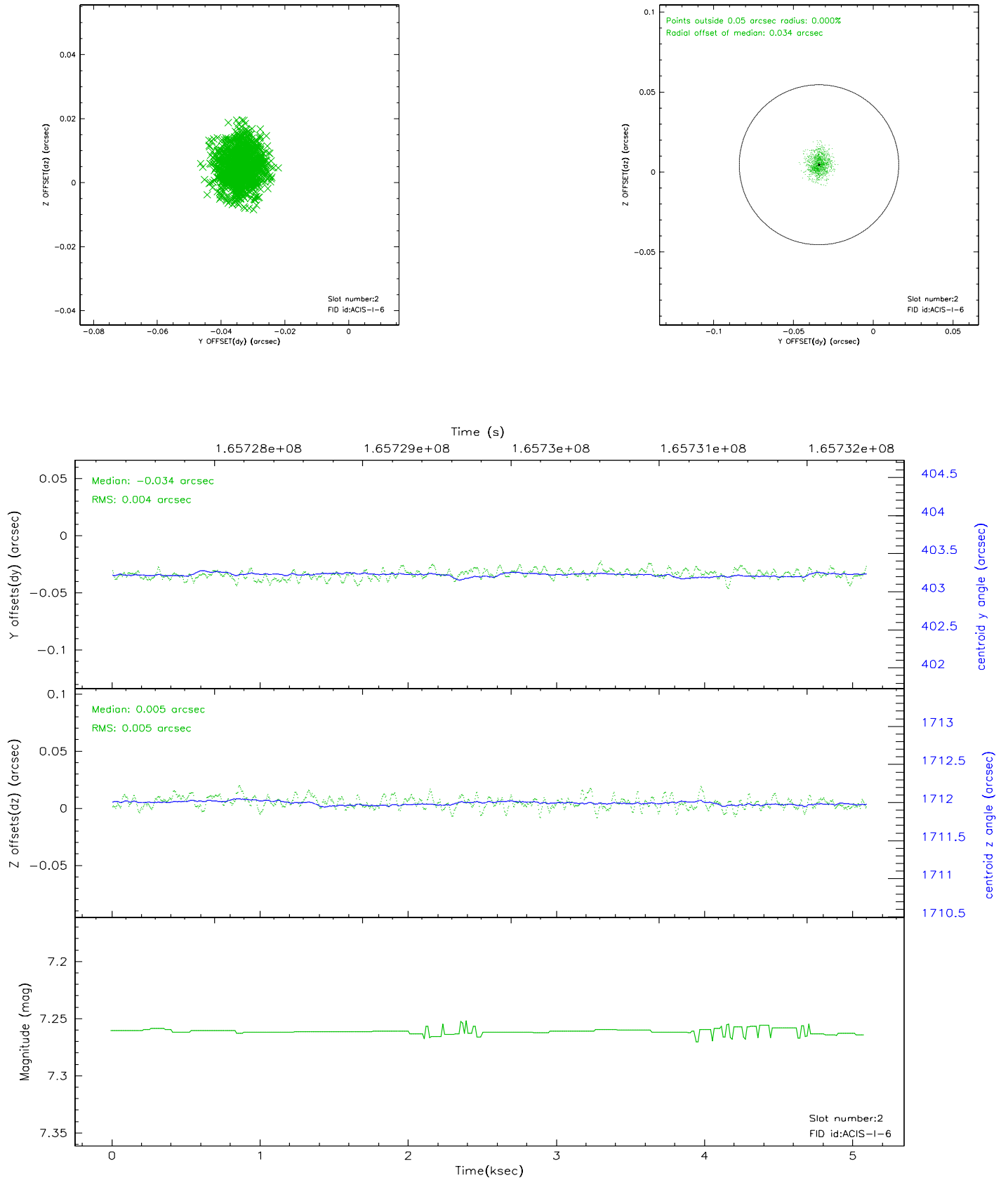
### 2.5.1 Slot 0



## 2.5.2 Slot 1

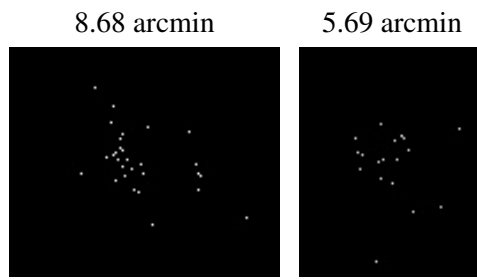


### 2.5.3 Slot 2





### 3 Point Sources



## A Summary

### A.1 Status

V&V Scientist	Jen Lauer
V&V Date (YYYY-MM-DD)	2006.07.30
V&V Edition	1
V&V Disposition and Status	OK
V&V Charge Time	4.674

### A.2 Comments