

V&V Reference Report

L2 ASCDS Version : 7.6.8

Observation 3515 - L2 Version 001
Chandra X-Ray Center

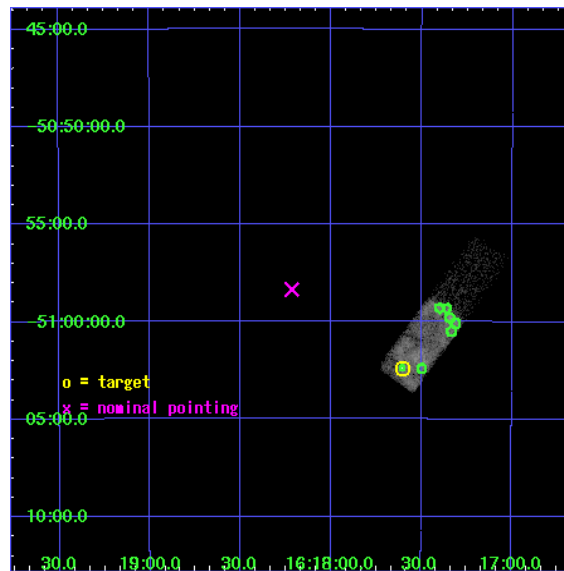
L2 Processing Date : Aug 1 2006

Contents

1	Front	2
2	OBI	3
2.1	OBI	3
2.1.1	Images	3
2.1.2	Bias	3
2.1.3	Parameters	4
2.1.4	Events	4
2.2	Compared Parameters	5
2.3	Aspect	6
2.4	Star Slots	9
2.4.1	Slot 3	9
2.4.2	Slot 4	10
2.4.3	Slot 5	11
2.4.4	Slot 6	12
2.4.5	Slot 7	13
2.5	FID Slots	14
2.5.1	Slot 0	14
2.5.2	Slot 1	15
2.5.3	Slot 2	16
3	Point Sources	17
A	Summary	18
A.1	Status	18
A.2	Comments	18

1 Front

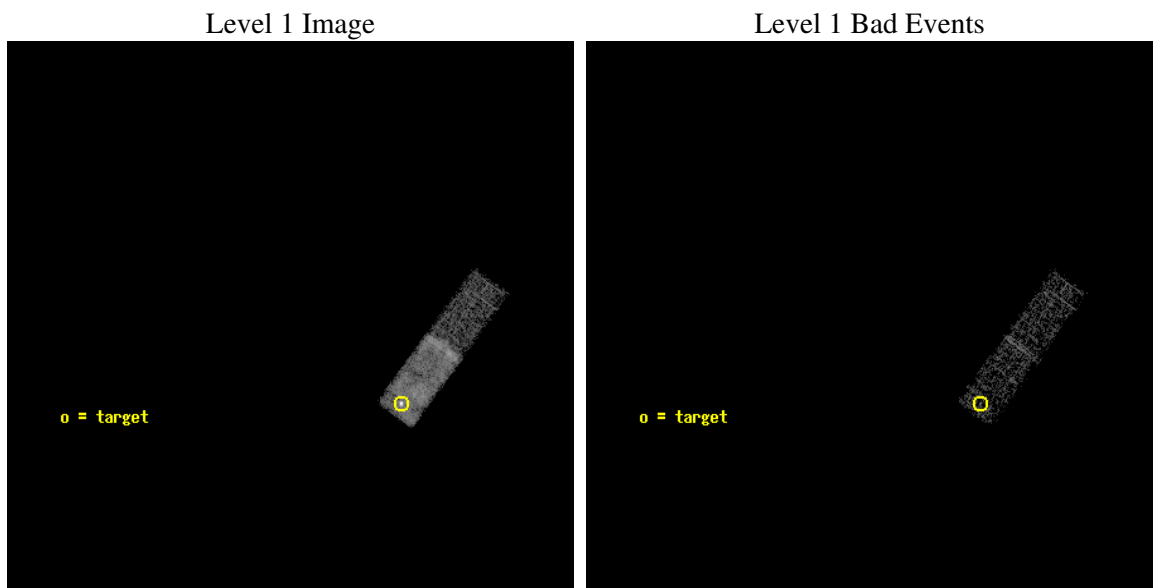
seq_num	500303
obs_id	3515
title	OBSERVATION OF SNR RCW103
observer	Professor Gordon Garmire
object	RCW103
dtcycle	0
cycle	P
ra_targ	244.40125
dec_targ	-51.040278
ra_nom	244.55388420789
dec_nom	-50.972631515576
roll_nom	36.281326315157
revision	2
ontime	5427.2000808716
livetime	5162.3704754795
ontime3	5427.2000808716
l2events	17495



2 OBI

2.1 OBI

2.1.1 Images



2.1.2 Bias

Chip 3



2.1.3 Parameters

obi_num	0
ascdsver	7.6.8
caldbver	3.2.2
date	2006-08-01T08:58:01
revision	2

sched_exp_time	5000.000000
ontime	5830.8694164455
ontime3	5830.8694164455
l1events	28646

2.1.4 Events

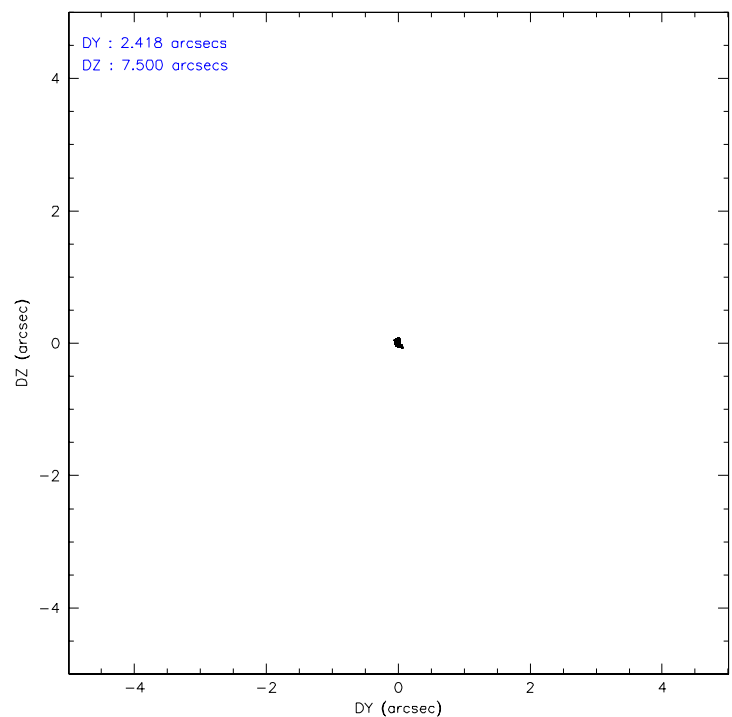
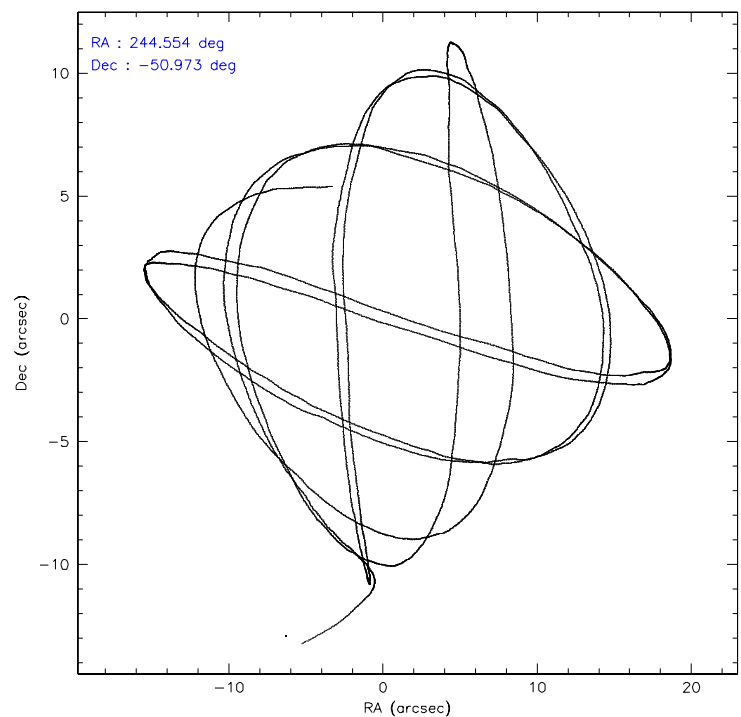
	ccd 3
level 1 events	28646
rejected events	10586
rejected %	36%

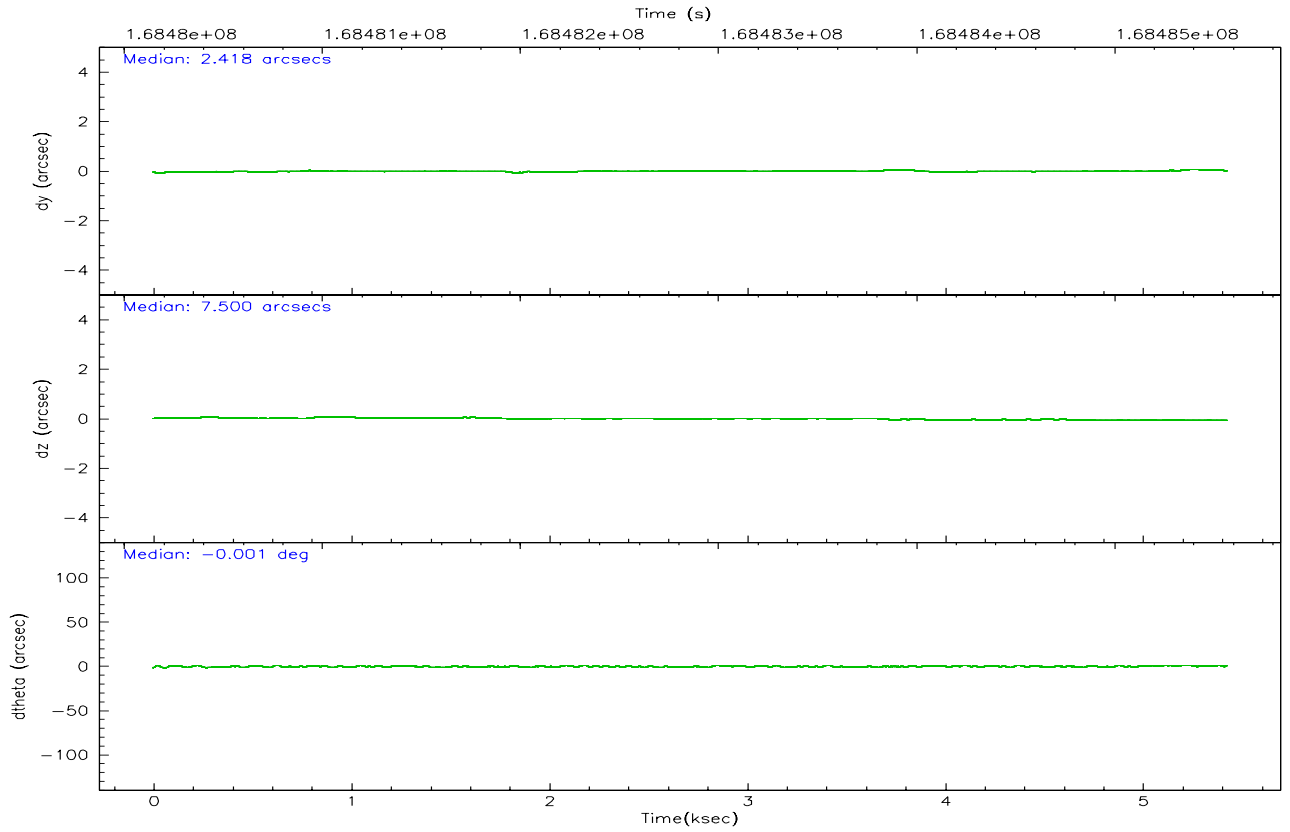
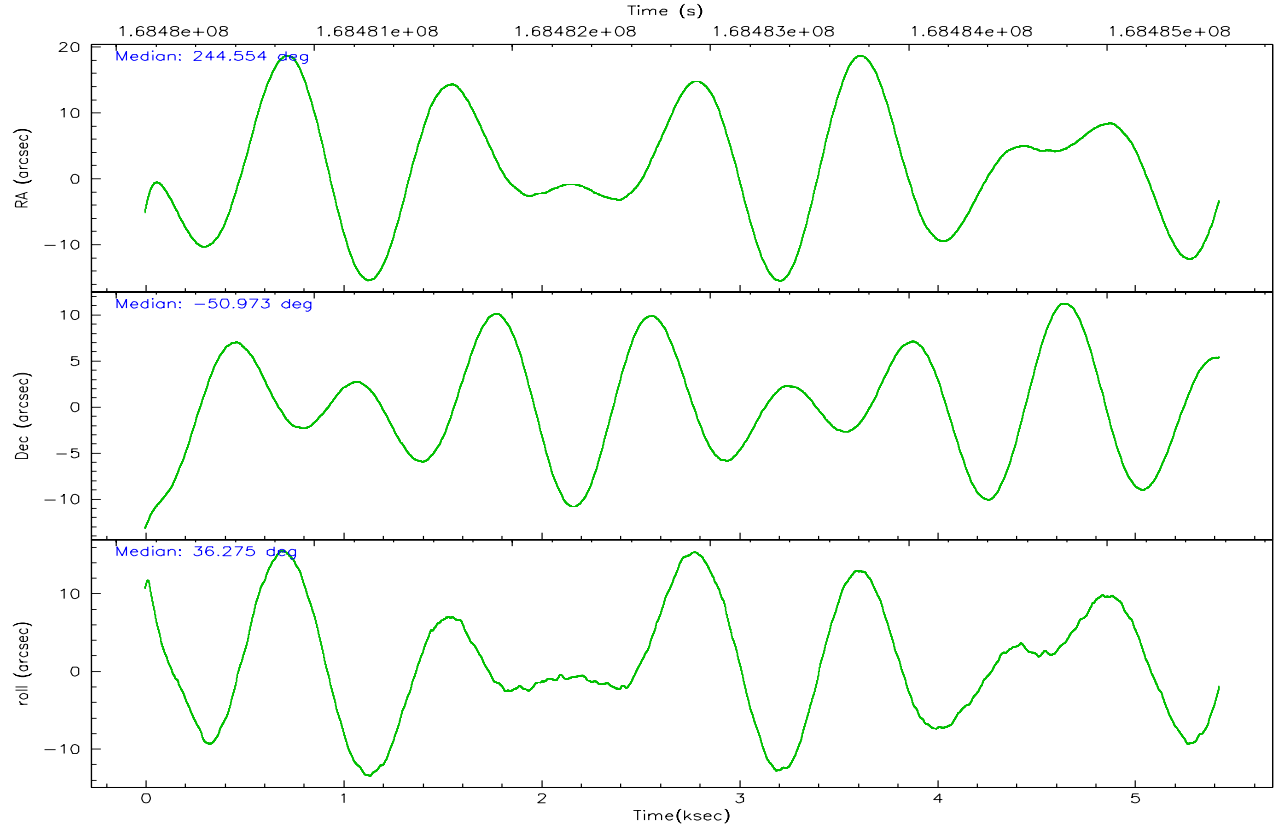
	ccd 3
grade 0 events	15203
	53%
grade 1 events	16
	0%
grade 2 events	1703
	5%
grade 3 events	621
	2%
grade 4 events	604
	2%
grade 5 events	400
	1%
grade 6 events	451
	1%
grade 7 events	9648
	33%

2.2 Compared Parameters

Parameter	Planned	Actual	Parameter	Planned	Actual
Instrument	ACIS	ACIS	Obspar format version number	6	6
Detector	ACIS-3	ACIS-3	Obspar file type	PREDICTED	ACTUAL
Grating	NONE	NONE	Obspar update status	NONE	UPDATED
Data mode	VFAINT	VFAINT	On-chip summing requested	N	N
Observation mode	POINTING	POINTING	Subarray requested	CUSTOM	1/4
Pointing RA	244.536781	244.5538842078937	Subarray start row	1	1
Pointing Dec	-50.997686	-50.97263151557615	Subarray row count	256	256
Pointing Roll	36.059326	36.28132631515666	Alternating exposures requested	N	N
SIM focus pos (mm)	-0.782348	-0.7809083437167272	Primary exposure time	0.000000	0.8
SIM defocus (mm)	0	0.001439871863259334			
SIM translation stage pos (mm)	-233.592463	-233.5874344608287			
SIM translation stage offset (mm)	0	-0.005018542100998502			
Observation start time	168480567.184000	168479483.80545			
Observation start date	2003-05-05T00:08:23	2003-05-04T23:51:23			
Observation end time	168485567.184000	168486490.19325			
Observation end date	2003-05-05T01:31:43	2003-05-05T01:48:10			
Read mode	TIMED	TIMED			

2.3 Aspect



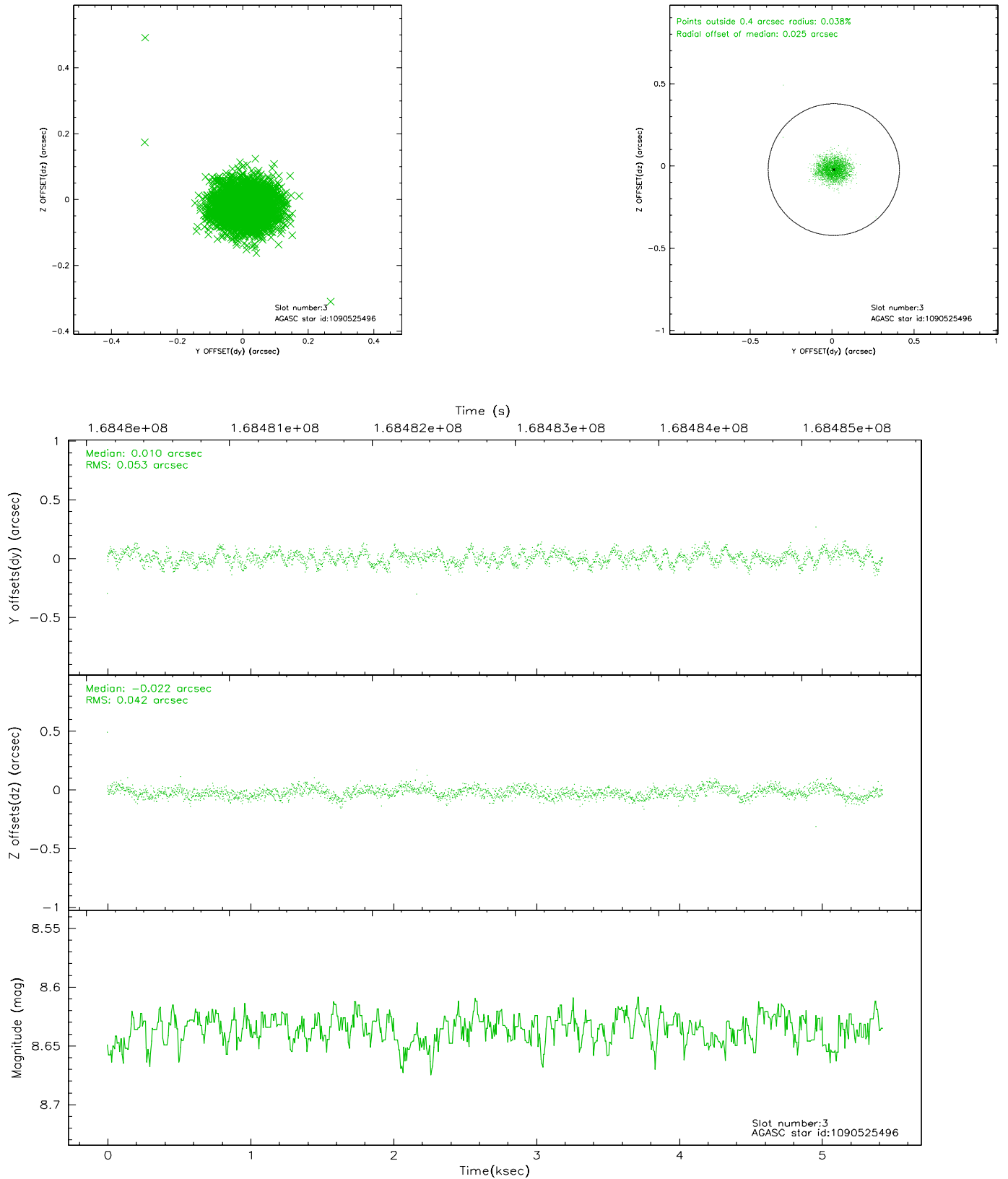


Slot Statistics

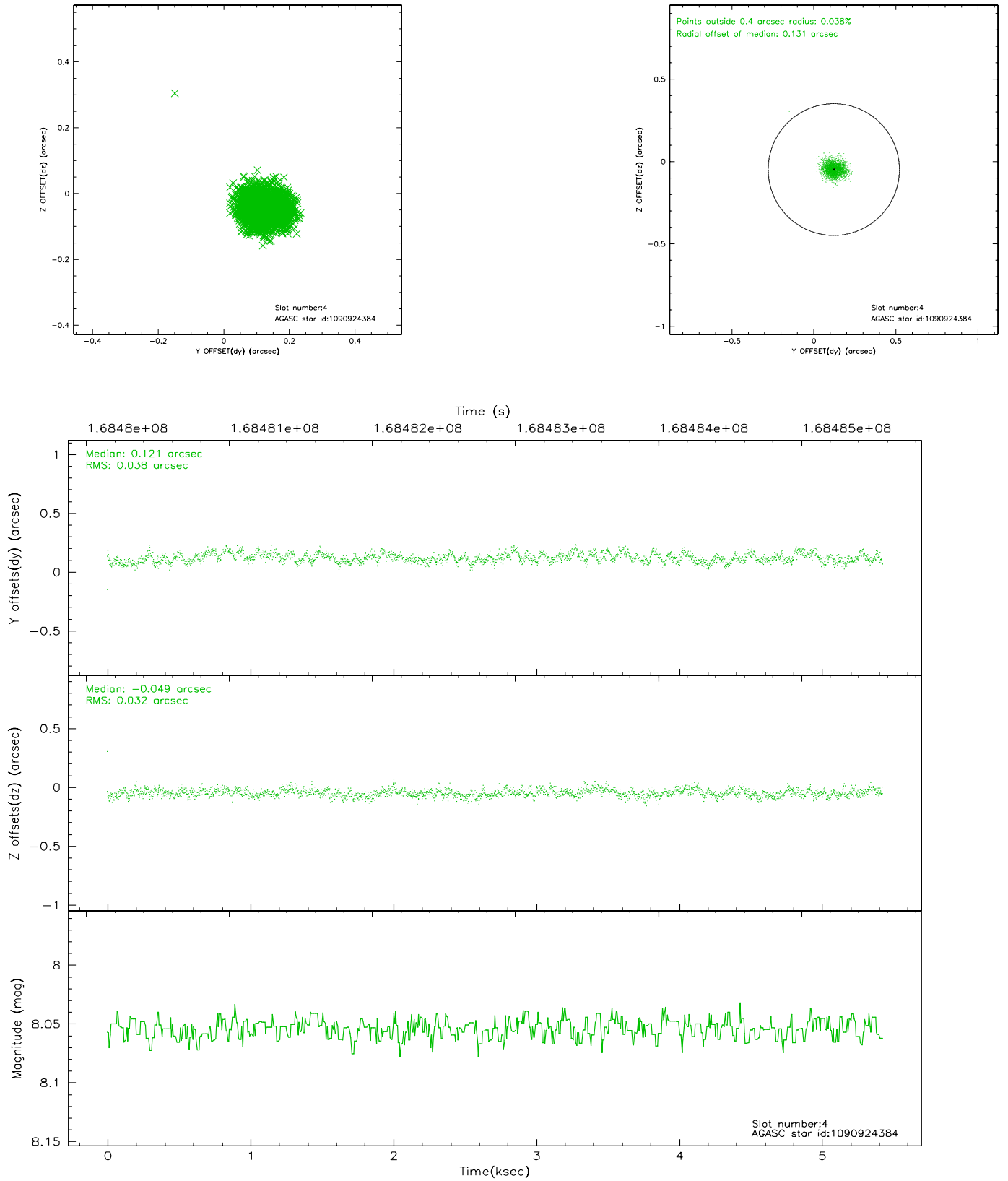
slot	status	id	mag	n_pts	med_dy	med_dz	dr1	dr2	ra	dec	mean_y	mean_z
0	FID	ACIS-I-1	7.25	1324	-0.014	0.050	0.006	0.010	0.000000	0.000000	937.36	-830.87
1	FID	ACIS-I-5	7.24	1324	-0.048	0.045	0.006	0.011	0.000000	0.000000	-1810.12	1066.11
2	FID	ACIS-I-6	7.26	1324	-0.029	-0.024	0.007	0.012	0.000000	0.000000	401.74	1711.76
3	GUIDE	1090525496	8.63	2648	0.010	-0.022	0.072	0.112	244.777039	-50.152945	2238.13	2131.68
4	GUIDE	1090924384	8.05	2649	0.121	-0.049	0.053	0.085	243.330505	-50.934017	-2089.27	1778.63
5	GUIDE	1091057912	9.15	2649	-0.204	0.159	0.088	0.137	245.642757	-51.112070	1767.05	-1818.44
6	GUIDE	1091059112	9.06	2647	-0.063	0.124	0.078	0.128	245.180420	-50.736664	1736.11	-109.17
7	GUIDE	1090921440	8.97	2645	0.134	-0.218	0.087	0.135	243.292741	-50.752608	-1784.09	2361.24

2.4 Star Slots

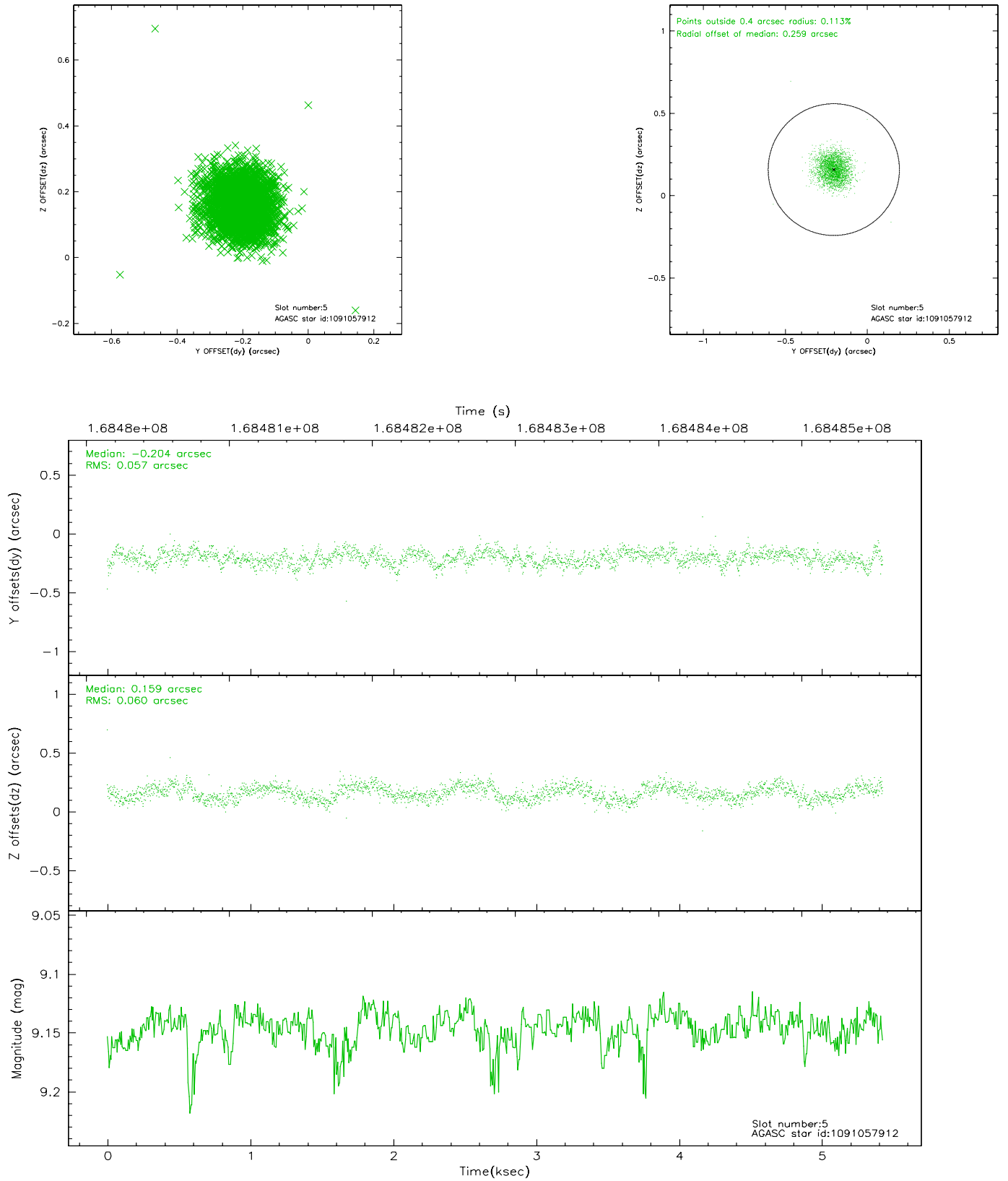
2.4.1 Slot 3



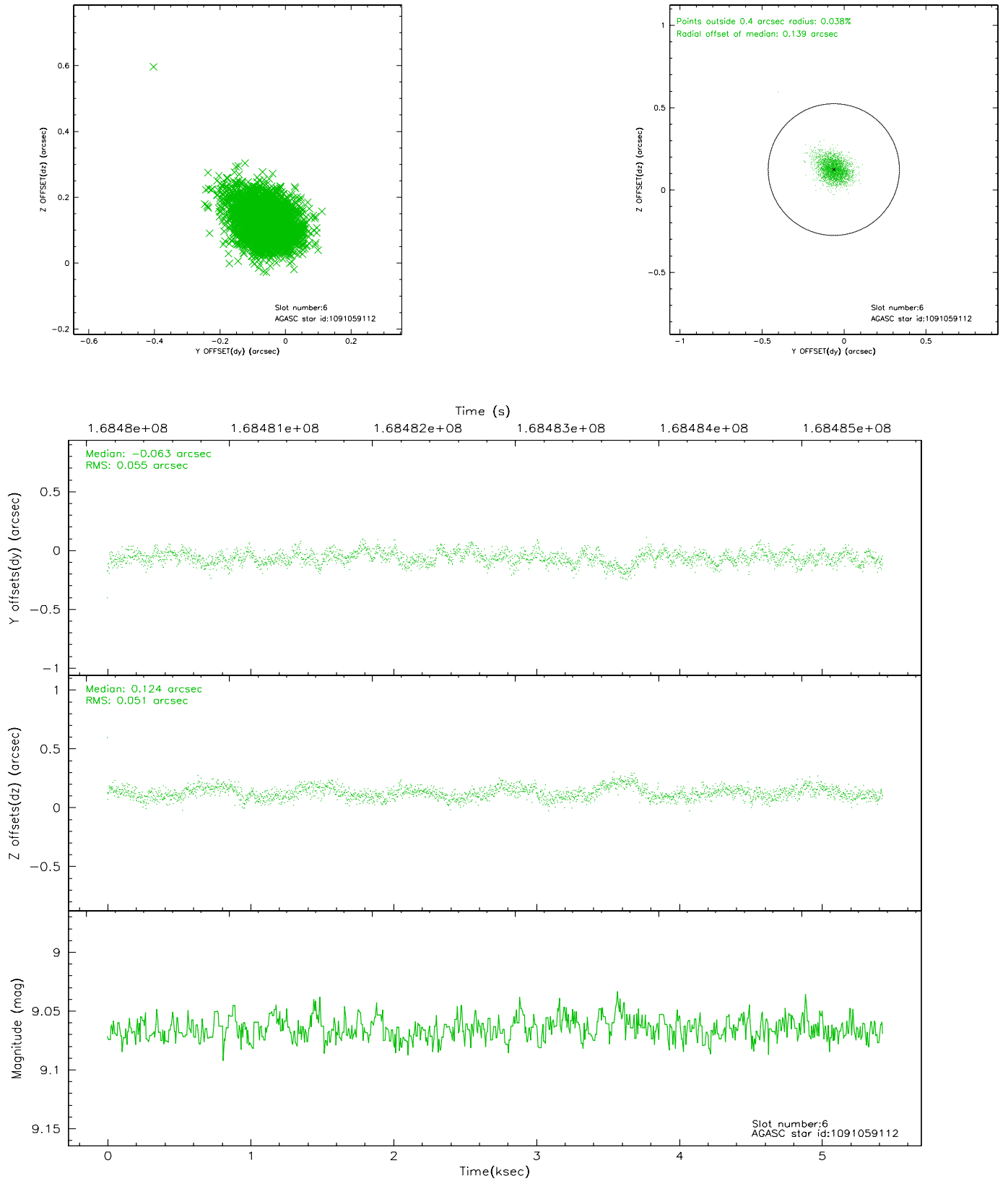
2.4.2 Slot 4



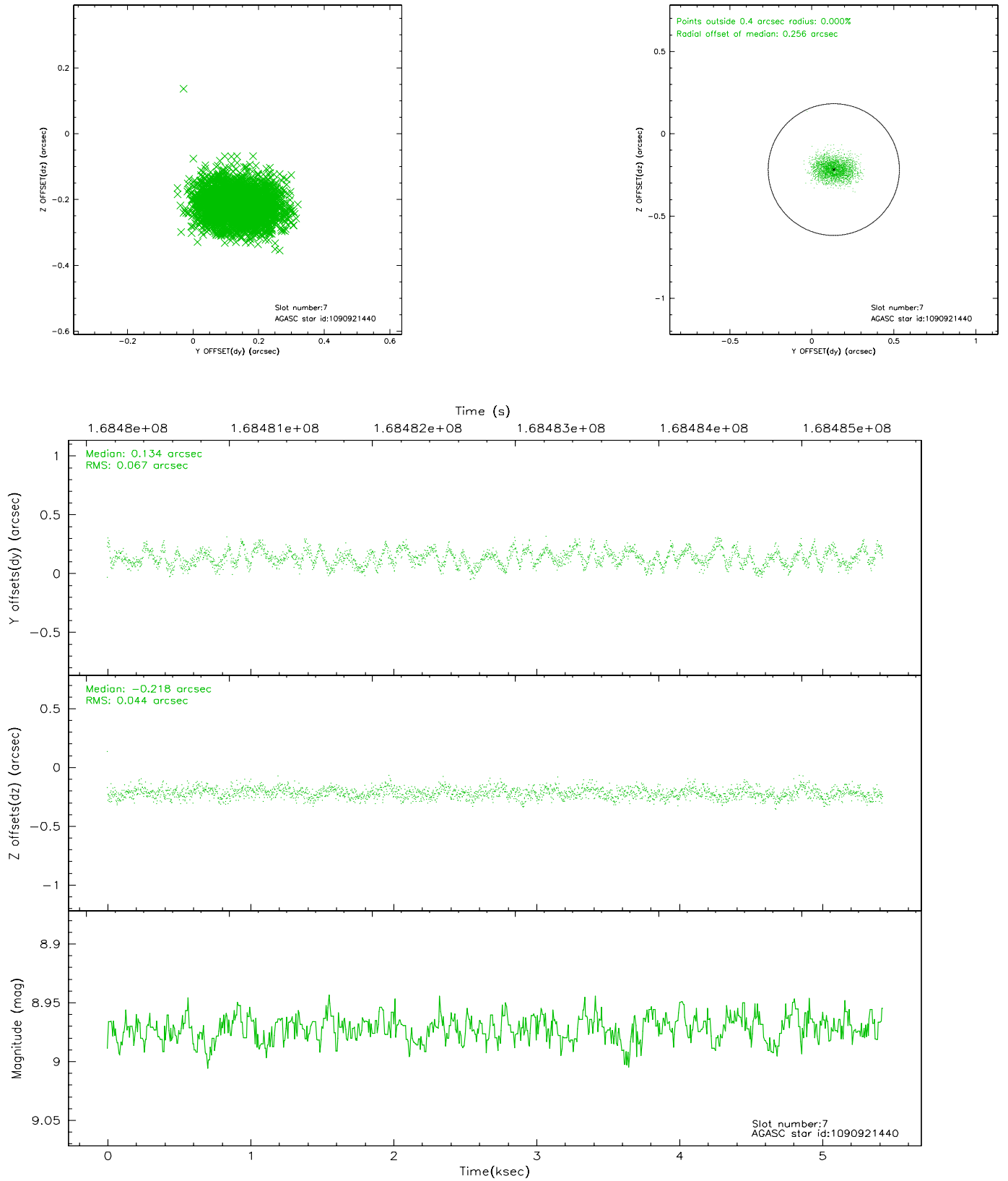
2.4.3 Slot 5



2.4.4 Slot 6

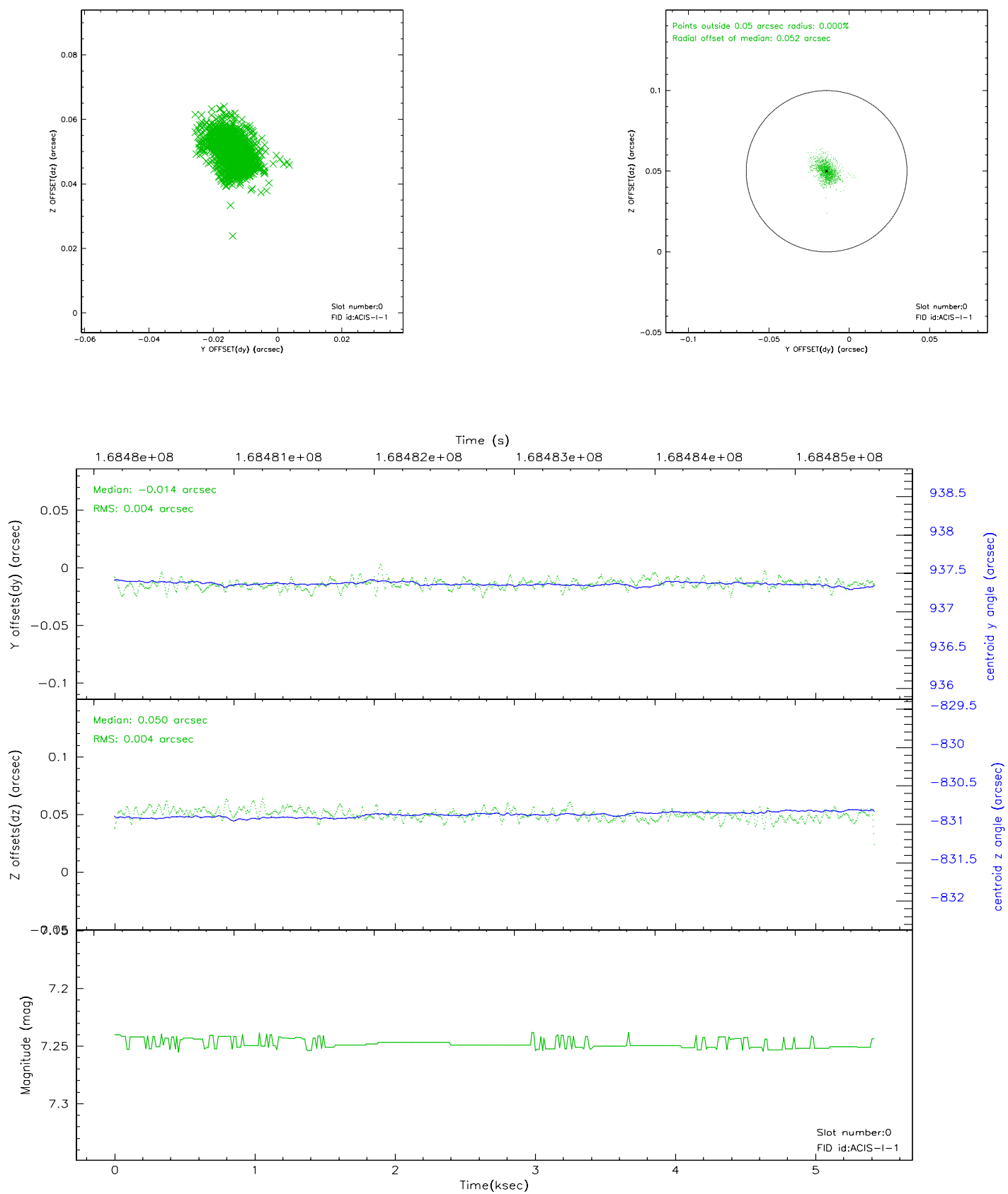


2.4.5 Slot 7

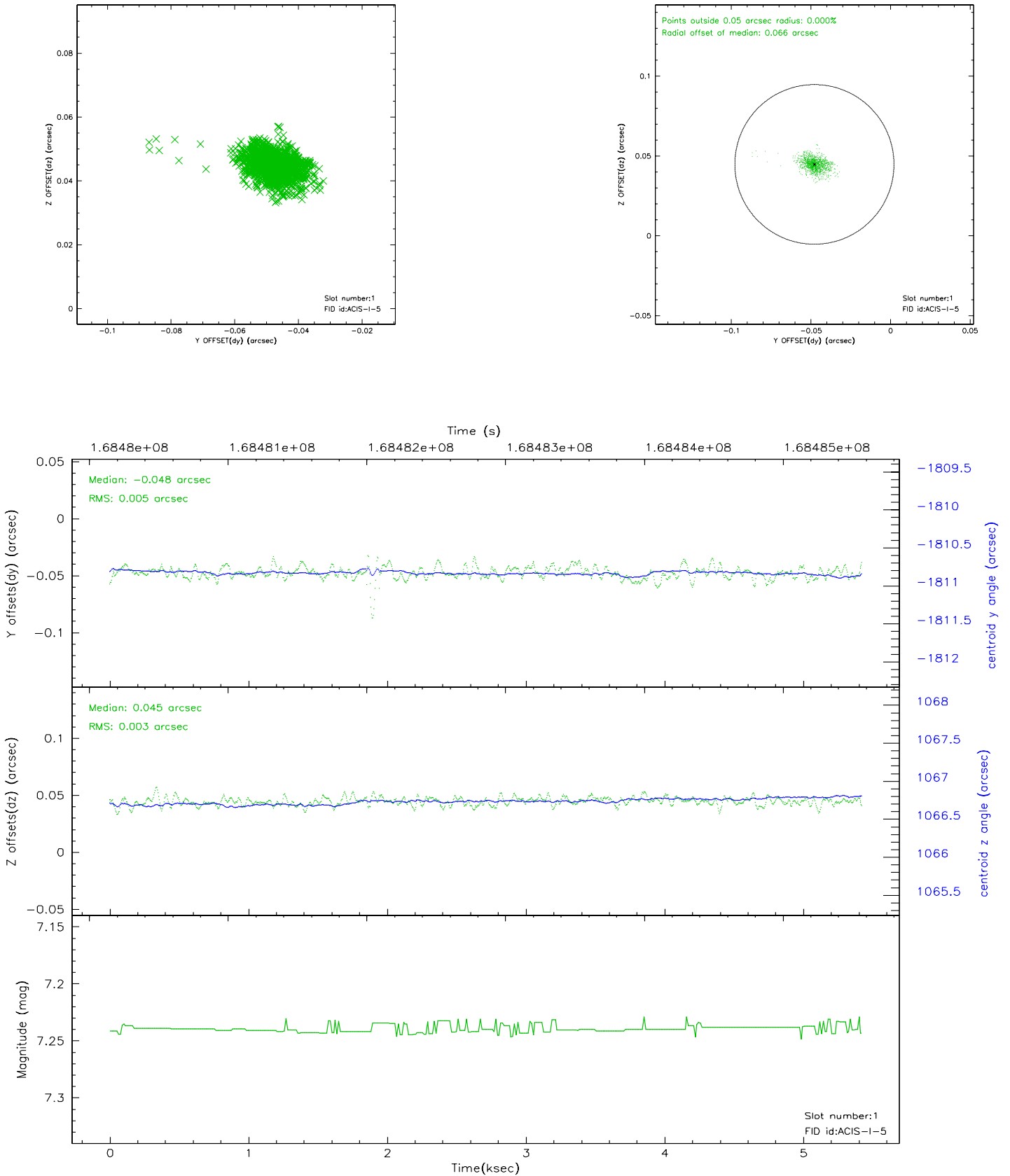


2.5 FID Slots

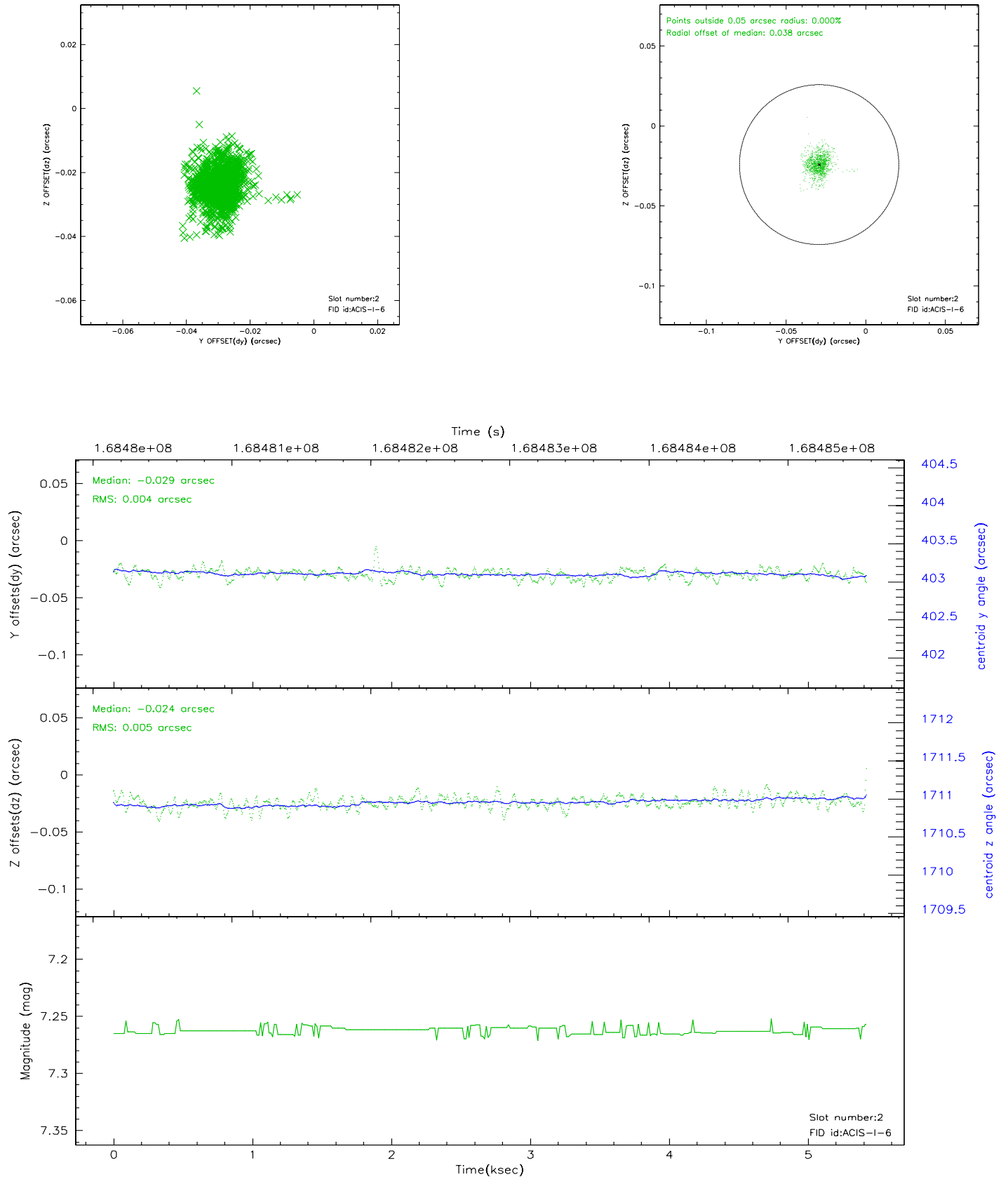
2.5.1 Slot 0



2.5.2 Slot 1

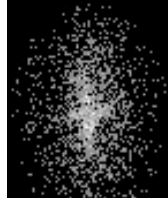


2.5.3 Slot 2



3 Point Sources

7.05 arcmin



A Summary

A.1 Status

V&V Scientist	Jen Lauer
V&V Date (YYYY-MM-DD)	2006.08.01
V&V Edition	1
V&V Disposition and Status	OK
V&V Charge Time	5.427

A.2 Comments

Monitor constraint met.